

An impressionistic oil painting of a coastal scene. The upper half of the image shows a steep, rocky cliff face rendered with thick, textured brushstrokes in shades of ochre, sienna, and muted green. Below the cliff, a sandy beach leads to the ocean. The water is depicted with vibrant, swirling strokes of turquoise, blue, and white, suggesting the movement of waves. In the foreground, a large, dark, craggy rock formation sits on the beach, partially submerged by the water. The overall style is expressive and painterly, with visible brushwork throughout.

Bonhams

California and Western Art

Online Auction | November 25 - December 2, 2020



California and Western Art

Online Auction | November 25 - December 2, 2020

BONHAMS

7601 W. Sunset Boulevard
Los Angeles CA 90046
bonhams.com

SALE NUMBER

26621
Lots 1 - 167

AUCTION INFORMATION

Bonded pursuant to California Civil
Code Sec. 1812.600;
Bond No. 57BSBGL0808

ILLUSTRATIONS

Front Cover: lot 91
Inside Front Cover: lot 22
Inside Rear Cover: lot 143
Rear Cover: lot 80

INQUIRIES

Los Angeles

Scot Levitt
Director, Fine Arts
Vice President
+1 (323) 436 5425
scot.levitt@bonhams.com

Kathy Wong
Specialist, Fine Arts
+1 (323) 436 5415
kathy.wong@bonhams.com

Katherine Halligan
Specialist, Western Art
+1 (323) 436 5474
katherine.halligan@bonhams.com

Sergio Torres
Administrator, Fine Arts
sergio.torres@bonhams.com

Isabel Norsten
Administrator, Fine Arts
isabel.norsten@bonhams.com

San Francisco

Aaron Bastian
Director, Fine Arts
+1 (415) 503 3241
aaron.bastian@bonhams.com

BIDS

Register to bid online by visiting
www.bonhams.com/26621

Alternatively, contact our Client
Services department at:
bids.us@bonhams.com
+1 (323) 850 7500

IMPORTANT NOTICES

Please note that all customers, irrespective of any previous activity with Bonhams, are required to have proof of identity when submitting bids. Failure to do this may result in your bid not being processed.

The auction will open for online bidding on November 25 at 10am, and close in a staggered manner on December 2 at 12pm, with a 5-minute lot extension for any bids placed within the last minute of closing. Please refer to www.bonhams.com/how_to_buy/21822 for further information on how to bid in our online-only auctions.

For absentee bids we require a completed Bidder Registration Form in advance of the sale. The form can be found at the back of every catalogue and on our website at www.bonhams.com and should be returned by email to the specialist department or to the Client Services department at bids.us@bonhams.com. Please note we cannot guarantee bids within 24 hours of the sale.

COVID-19 SAFETY STANDARDS

Bonhams' galleries are currently subject to government restrictions and arrangements may be subject to change.

Preview: Lots will be made available for in-person viewing by appointment only. Please contact the specialist department at +1 (323) 436 5413 or calam.us@bonhams.com to arrange an appointment before visiting our galleries. In accordance with Covid-19 guidelines, it is mandatory that you wear a face mask and observe social distancing at all times. Additional lot information and photographs are available from the specialist department upon request.

Bidding: We are unable to offer in-person bidding for this auction.

Payment, Collections & Shipping: We strongly encourage contactless payment of invoices prior to collection via wire transfer or credit card through your MyBonhams account. In-person or third-party collections from our galleries are scheduled in advance with our Client Services team.

Bonhams

© 2020 Bonhams & Butterfields Auctioneers Corp.
All rights reserved.



Specialists

Los Angeles



Scot Levitt
Vice President, Director
California and Western Art

Kathy Wong
Specialist
California and Western Art

Katherine Halligan
Specialist
California and Western Art

San Francisco



Aaron Bastian
Director
California and Western Art



1

HENRY SCOTT (BRITISH, 1911-2005)

Morning Mists

signed 'Henry Scott' (lower right) and titled on a label (on the reverse)

oil on canvas

24 x 36in

framed 30 x 42in

\$3,000 - 5,000

Provenance

Frost & Reed, London.

Creve Coeur Arts Gallery, Creve Coeur, Missouri.

The work depicts the three-masted sailing vessel *Lake Superior*, built in 1868 by the Scottish shipbuilding firm Robert Steele & Co. at Greenock.

1



2

FRENCH SCHOOL

Rooftops

bears signature 'Marquet' (lower right)

oil on board

9 1/2 x 7 1/2in

framed 16 x 14in

\$500 - 700

Provenance

Private collection, Los Angeles, California.

2

3

JAKOB HANSEN (DANISH, 1871-1949)

Entrance to the Castle

signed and dated 'Jakob Hansen. 1924.' (lower right)

oil on canvas

14 1/2 x 19in

framed 20 1/4 x 24 7/8in

\$600 - 800

Provenance

Private collection, Los Angeles, California.



3

4

ITALIAN SCHOOL (19TH/20TH CENTURY)

View of an Italian Hill Town

signed and dedicated indistinctly (lower right)

oil on canvas

14 x 20in

framed 19 1/2 x 25 1/2in

\$400 - 600

Provenance

Clarence E. and Phyrne J. Sprague, Santa Ana, California.

Private collection, Southern California, by family descent.



4



5

EUGÈNE DEMESTER (FRENCH, 20TH CENTURY)

Breton Seaport
signed 'Demester.' (lower right)
oil on canvas
15 x 21 1/2in
framed 21 x 27 3/4in

\$400 - 600

Provenance

Clarence E. and Phyrne J. Sprague, Santa Ana, California.
Private collection, Southern California, by family descent.

5



6

MARY CURTIS RICHARDSON (1848-1931)

Three Children Reading
signed 'Mary Curtis Richardson.' (lower left)
oil on canvas
36 x 60in
framed 40 1/2 x 64 1/2in

\$2,000 - 3,000

Provenance

Collection of Herbert and May Fleishhacker, commissioned from the artist.
Thence by descent to Patricia Mitau Rhein (1928-2013), San Francisco, California.
Thence by descent to the present owners.

The present work depicts the children of Herbert and May Fleishhacker, from left to right: Alan, Herbert Jr. and Marjorie.

6



7

7

ALBERT SHELDON PENNOYER (1888-1957)

My London Studio
signed 'A. Sheldon Pennoyer' (lower right) and titled on a label (affixed
to the stretcher)
oil on canvas
40 x 30in
framed 48 x 38in
Painted *circa* 1915.

Provenance

David Messum Fine Art, London, United Kingdom.
DeVile Galleries, Los Angeles, California.
Private collection, Santa Barbara, California.

\$4,000 - 6,000



8

8

NICHOLAS ALDEN BROOKS (1840-1904)

Still Life with Sheet Music

signed, inscribed and dated 'N.A. Brooks / - N.Y. 1891 -' (lower left)

oil on canvas laid down on masonite

13 7/8 x 17 7/8in

framed 20 x 24 1/4in

Painted in 1891.

\$1,500 - 2,500

Provenance

Private collection, Toronto, Ontario, Canada.

Acquired by the present owner from the above.



9

9

PAUL DOUGHERTY (1877-1947)

Still life with Tulips and Anemones

estate stamped 'Paul Dougherty' (lower right)

oil on canvas

32 1/2 x 26 3/4in

framed 48 1/2 x 42 1/2in

\$3,000 - 5,000

Provenance

Collection of the artist.

Collection of Marian Clark Dougherty (the artist's wife).

Collection of the Countess of Perth, London (Marian's niece).

Collection of the Earl of Perth, London.

10

WILLIAM ALEXANDER COULTER (1849-1936)

Niagara Falls, Prospect Point

signed 'W.A. COULTER' (lower right)

oil on canvas

19 1/2 x 23 3/4in

framed 28 x 32in

\$2,500 - 3,500

Provenance

Private collection, Northern California.



10

11

TREVOR JAMES (20TH CENTURY)

Schooners at Sea

signed 'Trevor James' (lower right)

oil on canvas

18 x 36in

framed 24 1/4 x 42 1/4in

\$1,000 - 2,000

Provenance

Private collection, New York, New York.



11



12

12

WILLIAM GAY YORKE (1817-1892)

The Ship *Pocahontas* off a Rocky Coast
signed and indistinctly dated 'W G Yorke / 18...'
(lower left)
oil on canvas
24 x 34in
framed 30 x 40in

\$1,500 - 2,500

Provenance

Property from the Collection of The Kelton Foundation.



13

13

AMERICAN SCHOOL (20TH CENTURY)

Ships Drying Sails at Dock in the Pacific Northwest
signed 'CAMPBELL C' (lower right)
oil on Masonite
24 x 36in
framed 33 1/4 x 45 1/4in

\$1,500 - 2,500

Provenance

Property from the Collection of The Kelton Foundation.

14

ALLEN GILBERT CRAM (1886-1947)

Fishing Vessels

signed 'A.G. Cram' (lower right)

oil on canvasboard

16 x 20in

framed 20 1/2 x 24 1/2in

\$1,500 - 2,500

Provenance

Private collection, Los Altos, California.



14

15

AMERICAN SCHOOL (20TH CENTURY)

North Shore Harbor Scene

bears signature 'AThieme' (lower right)

oil on canvasboard

16 x 20in

framed 23 x 27in

\$2,000 - 3,000



15



16

16

LOUIS RITMAN (1889-1963)

Still Life Arrangement

signed 'L. RITMAN' (lower left), titled on a label, and estate stamped (on the reverse)
oil on Masonite

15 x 18in

framed 21 1/2 x 25in

\$1,500 - 2,500

Provenance

Sale, Heritage Auctions, Dallas, Signature Fine American & European Paintings Auction, November 10, 2010, lot 64126.



17

17

JEROME MYERS (1867-1940)

Gypsies

unsigned, inscribed 'Jerome Myers / E.M.' by the artist's widow Ethel Myers (lower right) and titled on labels (on the reverse)

gouache, watercolor, ink and pencil on paper
7 x 9 3/8in

framed 14 x 17in

\$500 - 700

Provenance

Estate of the artist, Kraushaar Galleries, New York, New York.

Goldfield Galleries, Los Angeles, California.

Maxwell Galleries, San Francisco, California.

18

WILLIAM GLACKENS (1870-1938)

Lady Kicking Man in Rear

signed 'W. Glackens.' (lower right)

graphite and conte crayon on paper

6 7/8 x 8 3/8in

framed 14 x 14in

\$500 - 700

Provenance

Goldfield Galleries, Los Angeles, California.

Maxwell Galleries, San Francisco, California.



18

19

LEON FOSTER JONES (1871-1940)

A House in the Woods

unsigned

oil on canvas

28 x 22in

framed 29 x 35in

\$1,000 - 2,000

Provenance

Frank Leonard Gallery, Los Angeles, California.

The Estate of Ruth Westphal, Newport Beach, California.



19



20

20

MOSES SOYER (1899-1974)

Portrait of a Seated Nude

signed 'M Soyer' (lower right)

oil on canvas

36 x 30in

framed 45 1/2 x 39in

\$1,000 - 1,500

Provenance

Property of an Oregon Gentleman.



21

21

MOSES SOYER (1899-1974)

Semi Nude with Knee Socks

signed 'M Soyer' (upper right)

oil on canvas

30 1/4 x 24in

framed 37 x 31in

\$1,000 - 1,500

Provenance

Property of an Oregon Gentleman.



22

22

WILLIAM KEITH (1838-1911)

Mount Hood from Sandy River
signed, titled and dated 'WKeith 69' (on the reverse prior to lining)
oil on canvas

24 x 36in

framed 31 x 43in

Painted in 1869.

\$10,000 - 15,000

Provenance

Private collection, South Carolina.

William Keith was trained as a wood engraver in New York City. He practiced that trade in San Francisco until 1866 when he launched into a career as a landscape painter. His early works won immediate praise from the local critics. In 1868, he was commissioned to paint scenery for the Oregon Central Railroad Company, and in July of that year, the *San Francisco Evening Bulletin* reported that he had just finished a view of Mount Hood from the Sandy River 'from a new and favorable point.' (July 20, 1868).

Upon his return to San Francisco, Keith worked on creating large exhibition paintings based on his Oregon sketches. On May 12, 1869, Benjamin Avery, the *Bulletin's* art critic, took note of 'A large view of Mount Hood... from an excellent point of view on Snake River [sic].' It is likely that Avery misheard or misremembered the name of the river. In any case, he went on to remark that the peak of Mount Hood 'rises with impressive majesty...the minor points of the scenery are thoroughly faithful and characteristic, and the management of light bold and effective. It is the most satisfactory picture we have seen yet of this fine mountain.' Keith would have been thrilled with this assessment, as more established artists like Albert Bierstadt and Thomas Hill had executed major paintings of Mount Hood by 1869. This painting is the most important example of a Keith landscape in his early style to have come to light. Although an ill-advised conservator obliterated the original signature, inscription, date and canvas stencil, a photo was taken of the original canvas which shows Keith's early practice of signing major works on the reverse, and using Jones & Wooll canvases. Jones & Wooll went out of business in 1870. Only a handful of Keith paintings have survived from this era, showing bristling detailed foregrounds in his early style, and soft, ethereal snow peaks set against powder blue skies.

We are grateful to Alfred C. Harrison, Jr. for this note.



23

XAVIER MARTINEZ (1869-1943)

On Foot of Notre Dame de Paris; Au fête foraine (Lion de Belfort); and River View (a group of three) *Notre Dame* signed with the artist's monogram 'XM' (lower left), signed again and titled (on the reverse); *Fête foraine* signed with the artist's monogram 'XM' (lower left) and titled (on the reverse); *River View* signed and dated 'J.T. Martinez / JTM / 900' (on the reverse)

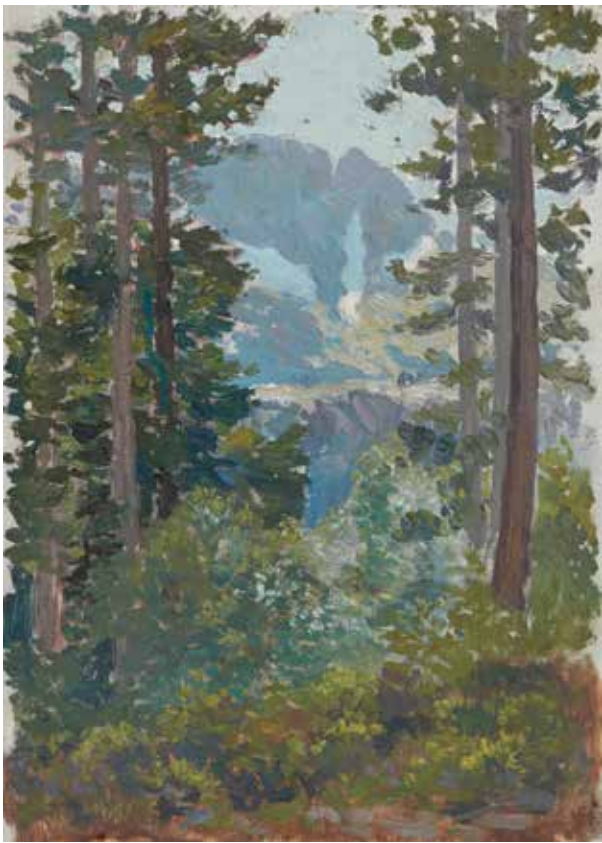
Notre Dame and *River View* oil on canvasboard; *Fête foraine* oil on board
9 x 11in; 3 3/4 x 5 3/4in; 6 x 8 1/2in, respectively
each unframed
Painted circa 1900.

\$4,000 - 6,000

Provenance

Property from the Estate of Russell Chatham.

23



24

**GOTTARDO FIDELE PONZIANO PIAZZONI
(1872-1945)**

Rock Face through the Trees; Mountain Lake; A
Stand of Trees in the Mountains (a group of three)
each unsigned
each oil on canvasboard
14 x 10in; 10 x 14in; 12 x 10in, respectively
each unframed

\$3,000 - 5,000

Provenance

Property from the Estate of Russell Chatham.



24



25

25

GOTTARDO FIDELE PONZIANO PIAZZONI (1872-1945)

Mill Valley; Beach - Big Sur, California (a group of two)
Mill Valley incised signature 'GFP Piazzoni' (lower right), signed again, titled, dated and inscribed (on the reverse); *Big Sur* incised signature and date 'GP 29' (lower left), signed again, titled and dated (on the reverse)

both oil on board

Mill Valley 6 1/4 x 8 5/8 in; *Big Sur* 6 3/8 x 8 3/4 in

unframed; framed, respectively.

Painted in 1911 and 1929, respectively.

Provenance

Property from the Estate of Russell Chatham.

\$4,000 - 6,000

26

ARTHUR PUTNAM (1873-1930)

Puma and Snakes (a posthumous cast)
inscribed 'APUTNAM PARIS 06' (on the base)
bronze with light brown patina
14in high
Modeled in 1906.

\$1,500 - 2,500

Provenance

Property from the Estate of Russell Chatham.



26

27

PERCY GRAY (1869-1952)

Landscape with Oaks
signed and dedicated 'Sincerely Yours / Percy Gray'
(on a label affixed to the backing)
watercolor on paper laid down to board
3 3/8 x 5 1/2in
framed 6 3/8 x 8 1/2in

\$1,000 - 1,500

Provenance

Private collection, Northern California.



27



28

28

JULES FRANCOIS PAGES (1833-1910)

Old San Francisco Chinatown
signed and dated 'J.F. Pages '94' (lower left)
oil on canvas affixed to board
14 1/4 x 10 1/2in
framed 17 x 13in
Painted in 1894.

\$2,000 - 3,000

Provenance

Private collection, Texas.



29

29

GIUSEPPE CADENASSO (1858-1918)

Golden Glow
signed indistinctly (lower left)
pastel on paper
9 1/2 x 15 1/2in
framed 16 x 21 3/4in

\$1,000 - 1,500

Provenance

Garzoli Gallery, San Rafael, California.
Private collection, Los Altos, California.

30

CARL JONNEVOLD (1856-1955)

Forest Interior

signed 'CJonnevold' (lower right)

oil on Masonite

12 x 16in

framed 17 1/4 x 21 1/2in

\$1,000 - 1,500

Provenance

Private collection, Oakland, California.

Private collection, Los Altos, California.



30

31

JEAN MANNHEIM (1861-1945)

Still Life with Apples and Pewter

signed 'Jean. Mannheim' (lower right)

oil on canvas

15 x 21 1/2in

framed 22 3/4 x 29 1/4in

\$1,000 - 1,500



31



32

32

ELIZABETH BORGLUM (1848-1922)

Edge of the Mountains

signed 'Elizabeth Borglum' (lower right)

oil on canvasboard

17 x 23 1/4in

framed 22 3/4 x 28 3/4in

\$1,000 - 1,500

Provenance

Sale, Monterey Museum of Art: Baird Collection

Benefit Auction, Monterey, April 22, 2007, lot 35.

Kerwin Galleries, Burlingame, California.



33

33

WILLIAM ALEXANDER COULTER (1849-1936)

San Francisco Wreck (Capsized British Bark *Blairmore* with Tug *Alert* and Scow Schooner *Twin Sisters*)

signed 'W.A. Coulter' (lower right)

pen and ink on paper

8 x 12in

framed 17 1/2 x 14 1/4in

\$500 - 700

The present work is one of William Coulter's illustrations for the *San Francisco Call* newspaper depicting the salvage of the British bark *Blairmore* a few days after she capsized at Mission Bay in 1896. Coulter worked for the *Call* as their waterfront illustrator from 1896 to 1906. A copy of the article accompanies the lot.

(Please refer to lot online for extended cataloging note)

34

JOE DUNCAN GLEASON (1881-1959)

Barkentine *Georgina* (San Pedro, California)
signed 'J Duncan Gleason' (lower right) and titled on
the artist's label (on the reverse)
oil on canvasboard
12 x 10in
framed 18 3/4 x 16 3/4in

\$1,500 - 2,500



34

35

CONSTANT L'AUBINIERE (1842-1910)

San Francisco Harbor Scene
signed and dated 'L'Aubiniere 1888' (lower right)
oil on board (en grisaille)
9 3/4 x 13 1/2in
framed 15 1/4 x 19in
Painted in 1888.

\$500 - 700

Provenance

Property from the Collection of The Kelton
Foundation.



35



36

36

JOE DUNCAN GLEASON (1881-1959)

The *Portola* off Point Vicente
signed 'Duncan Gleason' (lower right) and titled on
the artist's label (on the reverse)
oil on canvas
10 x 12in
framed 17 x 19in
Painted *circa* 1930.

\$1,200 - 1,800

Provenance

Edenhurst Gallery Fine Art, Los Angeles, California.
Property from the Collection of The Kelton
Foundation.



37

37

JOE DUNCAN GLEASON (1881-1959)

Decorative mirror with painted whaling scene
signed 'Duncan Gleason' (lower right)
oil on canvas affixed to frame
painting 7 x 13in
framed 28 1/2 x 17in

\$2,000 - 4,000

Provenance

Property from the collection of The Kelton
Foundation.

38

GIDEON JACQUES DENNY (1830-1886)

Ship in Distress, Anchored off San Francisco
signed and dated 'G.J. Denny 1882' (lower right)
oil on canvas
20 x 36in
framed 30 x 46in
Painted in 1882.

\$1,500 - 2,500

Provenance

Property from the Collection of The Kelton Foundation.



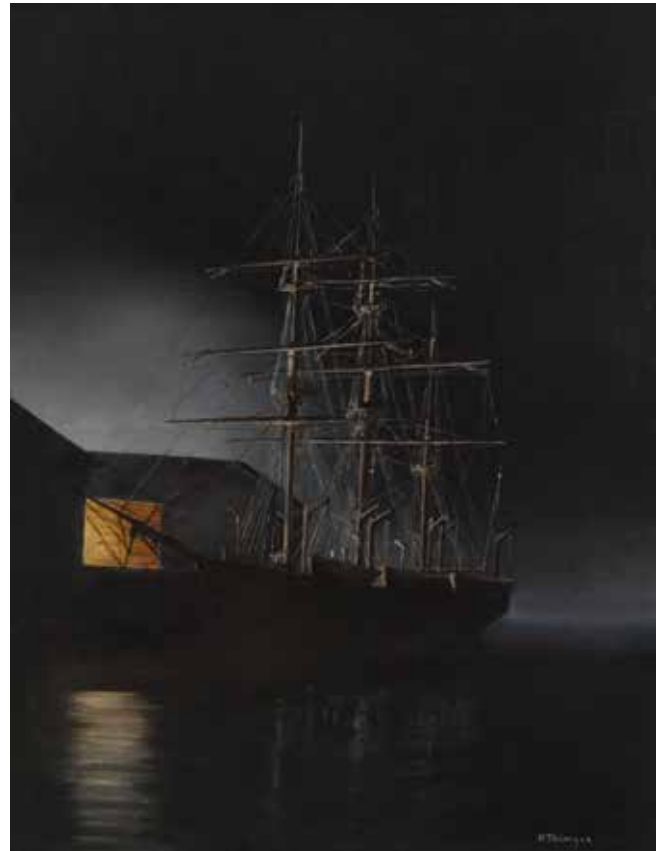
38

39

DAVID THIMGAN (1955-2003)

A Whaling Barque in Moonlight
signed 'D. Thimgan' (lower right)
oil on canvas
20 x 16in
framed 27 1/2 x 23 1/4in

\$700 - 1,000



39



40

40

JOE DUNCAN GLEASON (1881-1959)

A sailing ship on moderate seas
signed 'Duncan Gleason' (lower right)
watercolor and gouache on paper
sight 10 x 14in
framed 18 3/4 x 22 3/4in

\$500 - 700

Provenance

Sale, John Moran Auctioneers, California and
American Fine Art, February 15, 2005, lot 84.



41

41

MARK RICHARD MYERS (BORN 1945)

Shelikhov's Ships Enter Three Saints Harbour
signed 'Mark Myers' (lower right)
watercolor on paper
sight 14 x 21 1/4in
framed 23 x 29 3/4in

\$800 - 1,200

42

JOE DUNCAN GLEASON (1881-1959)

The Orange Market, Natlapa, Mexico
signed 'Duncan Gleason' (lower right) and titled on
the artist's label (on the reverse)
oil on canvas
25 x 30in
framed 33 x 38in

\$3,000 - 5,000

Provenance

Edenhurst Gallery Fine Art, Los Angeles, California.
Property from the collection of The Kelton
Foundation.

According to a handwritten note by the artist on
his own label (on the reverse), this painting won a
'Figure Award' at both the Ebell Club and the Friday
Club in Los Angeles, no dates recorded.



42

43

JOE DUNCAN GLEASON (1881-1959)

Tamazunchale, Mexico
signed 'Duncan Gleason' (lower right) and titled on
the artist's label (on the reverse)
oil on canvasboard
12 x 16in
framed 18 3/8 x 22 1/2in

\$500 - 700

Provenance

Property from the Collection of The Kelton
Foundation.



43



44

44

JOE DUNCAN GLEASON (1881-1959)

The Quick and the Dead, North Atlantic
signed 'Duncan Gleason' (lower right) and titled on
the artist's label (on the reverse)

oil on board

8 x 10in

framed 16 1/2 x 18 1/2in

\$500 - 700

Provenance

Property from the Collection of The Kelton
Foundation.



45

45

MARY DENEALE MORGAN (1868-1948)

Near Palm Canyon

signed 'M. DeNeale Morgan' (lower right), also
signed and titled 'M DeNeale Morgan' (on the
stretcher bar)

oil on canvas

25 1/8 x 30 1/4in

framed 32 1/4 x 37 1/4in

\$2,500 - 3,500

Provenance

Private collection, Oakland, California.

Sale, Bonhams and Butterfields, Los Angeles and
San Francisco, California and American Paintings,
June 8, 2004, sale 13014, lot 4353.

Private collection, Pacific Grove, California.

46

JOHN O'SHEA (1876-1956)

Untitled (Carmel Springtime)

signed 'JOHN O'SHEA' (lower center)

oil on canvasboard

14 x 20in

framed 21 x 27in

\$500 - 700

Provenance

Richard 'Rick' Powers, Detroit, Michigan.

Bill Powers, Santa Cruz, California.

Frank Flanagan, San Jose, California.

Danny Verrier, Aptos, California.

Naim Farhat, Santa Cruz, California.

Ronnie Carr, Capitola, California.

Private collection, Carmel, California.



46

47

DONALD TEAGUE (1897-1991)

White Walls of Andalusia

signed 'Donald Teague N.A.' (lower right) and titled
(on the backing)

watercolor on paper

6 1/2 x 9 1/2

framed 10 1/4 x 13in

\$1,000 - 1,500

Provenance

Property from the Frederick Ogilvy Capen and
Dorothy Edith Capen Trust.



47



48

48

ARTHUR HILL GILBERT (1894-1970)

Landscape with California Live Oak

signed 'Arthur Hill Gilbert ANA' (lower left)

oil on canvasboard

9 x 12in

framed 14 3/4 x 17 3/4in

\$1,500 - 2,500

Provenance

Albert / Dwaine Galleries, Tustin, California.

Clarence E. and Phyrne J. Sprague, Santa Ana, California.

Private collection, Southern California, by family descent.



49

49

ARTHUR HILL GILBERT (1894-1970)

Pebble Beach

signed 'Arthur Hill Gilbert' (lower left), signed again, dated and titled 'ARTHUR HILL GILBERT / 1952' (on the reverse)

oil on board

8 3/4 x 10 3/4in

framed 10 3/4 x 12 3/4in

Painted in 1952.

\$1,000 - 1,500

50

LILLIE MAY NICHOLSON (1884-1964)

Monterey Bay

signed 'LM Nicholson' (lower right)

oil on canvas

11 x 14in

framed 16 1/2 x 20 1/8in

Painted *circa* 1938.

\$1,500 - 2,500

Provenance

Sale, The Baird Collection of Early California Painting
Auction, Monterey Museum of Art, May 21, 2006,
lot 20.

Private collection, Carmel, California.



50

51

MARY DENEALE MORGAN (1868-1948)

Carmel Valley

signed 'M. DeNeale Morgan' (lower right)

gouache on illustration board

11 x 12 1/2in

framed 21 x 21 1/2in

\$2,000 - 3,000

Provenance

Private collection, Carmel, California.



51



52

52

FRANCIS JOHN MCCOMAS (1875-1938)

Sunlit Path

signed and dated 'FMcComas 99' (lower left)

watercolor on paper

14 1/4 x 18 1/2in

framed 21 x 25 1/4in

Painted in 1899.

\$1,000 - 1,500

Provenance

Anonymous, estate sale *circa* 1990s.

John Helms, San Francisco, California.

Atelier Doré, San Francisco, California.

Ronnie Carr, Capitola, California.

Private collection, Carmel, California, February 1994.



53

53

MARY DENEALE MORGAN (1868-1948)

Cypress Trees

signed 'M DeNeale Morgan' (lower left)

oil on board

8 x 10in

framed 11 3/8 x 13 1/4in

\$2,000 - 3,000

Provenance

Private collection, Carmel, California.

54

FERDINAND BURGdorFF (1881-1975)

Path to the Ocean

signed and dated 'Ferdinand Burgdorff 1911' (lower left)

oil on canvas

16 x 20 1/4 in

framed 20 1/2 x 24 1/2 in

Painted in 1911.

\$1,000 - 2,000

Provenance

Guenther's Galleries, Cleveland, Ohio.



54

55

FERDINAND BURGdorFF (1881-1975)

Lakeside Landscape

signed and dated 'Ferdinand Burgdorff 1924' (lower right)

oil on canvas

30 1/4 x 48 in

framed 34 1/2 x 52 1/2 in

Painted in 1924.

\$3,000 - 5,000



55



56

56

CALIFORNIA SCHOOL (19TH/20TH CENTURY)

Old Custom House, Monterey, California

unsigned

oil on artist board

9 x 12in

framed 13 7/8 x 16 7/8in

\$500 - 700

Provenance

Clarence E. and Phyrne J. Sprague, Santa Ana, California.

Private collection, Southern California, by family descent.



57

57

NORMAN ST. CLAIR (1863-1912)

San Marino Oaks (Late Afternoon, Oak Knoll near Pasadena)

signed 'Norman St. Clair' (lower right)

watercolor on paper

14 1/4 x 18in

unframed

\$800 - 1,200

Provenance

The Laguna Art Museum, Laguna Beach, California

Property sold to benefit the Laguna Art Museum's collections fund.

58

WILLIAM BRUCE (1861-1911)

Mountain Cabin

signed and dated 'W. Bruce. 1910' (lower left)

oil on canvas

18 x 30 1/4 in

framed 27 1/2 x 39 1/2 in

Painted in 1910.

\$1,500 - 2,500

Provenance

Property of a private collector.



58

59

CLARENCE HINKLE (1880-1960)

Old Oak

signed 'HINKLE' (lower right) and titled on labels (on the reverse)

oil on Masonite

18 x 22 in

framed 22 x 26 in

\$1,000 - 2,000

Provenance

Private collection, Santa Barbara, California.



59



60

60

CLARENCE HINKLE (1880-1960)

Still Life with Cactus

signed 'Hinkle' (lower right)

oil on canvas

24 x 20in

framed 33 x 29in

\$3,000 - 5,000

Provenance

Private collection, Southern California.



61

61

MAURICE LOGAN (1886-1977)

The Serengeti

signed and inscribed 'MAURICE LOGAN / AFRICA' (lower right), inscribed '-20-' (on the stretcher bar)

oil on canvas

15 x 20in

framed 26 x 21in

\$2,000 - 3,000

Provenance

Private collection, Laguna Beach, California.

62

FRANZ ARTHUR BISCHOFF (1864-1929)

Sailing on a Stormy Sea

signed 'Franz A. Bischoff' (lower right)

oil on canvas

20 x 24in

framed 26 x 30in

\$3,000 - 5,000

Provenance

Sale, Weschler's Auctioneers & Appraisers,
Rockville, Maryland, October 14, 1989, lot 126.
Private collection, Northern California.



62

63

CHARLES REIFFEL (1862-1942)

Houses Along the Water

signed 'Charles Reiffel' (lower left)

gouache and graphite on paper

6 x 6 1/2in

framed 12 x 12in

\$3,000 - 5,000



63



64

64

JACK WILKINSON SMITH (1873-1949)

Mountain Lake

signed 'Jack Wilkinson Smith' (lower left)

oil on canvas

20 x 24in

framed 27 x 31in

\$3,000 - 5,000

Provenance

Maxwell Galleries, San Francisco, California.

Private estate, San Francisco, California.



65

65

JESSIE ARMS BOTKE (1883-1971)

Landscape with Cypress Trees

signed and dated 'JESSE ARMS BOTKE / 1917.'

(lower right)

oil on canvasboard

14 x 18in

framed 19 x 22in

Painted in 1917.

\$2,000 - 3,000

66

GRANVILLE REDMOND (1871-1935)

A Field of Poppies with Snowcapped Mountains in the Distance
unsigned, inscribed by Marylee P. Redmond (on the reverse)

oil on Masonite

11 x 14in

framed 18 x 21in

\$4,000 - 6,000

Provenance

Estate of the artist.

Hiram J. and Marylee P. Redmond, his son and daughter-in-law, by descent.

A Southern California museum.

Sale, Butterfield & Butterfield, San Francisco and Los Angeles, California & American Paintings and Sculpture, November 19, 2002, lot 8196.



66

67

GRANVILLE REDMOND (1871-1935)

Sketch (Camping on the Beach)

signed 'Granville Redmond -' (lower left), titled, dated and inscribed on a period label (on the reverse)

oil on canvas affixed to board

12 x 16in

framed 20 1/2 x 24 1/4in

Painted in 1931.

\$5,000 - 7,000

Provenance

Sale, John Moran Auctioneers, Monrovia, October 23, 2001, lot 13.



67



68

68

ORRIN A. WHITE (1883-1969)

Landscape with eucalyptus

signed 'Orrin A White' (lower right)

oil on canvas

16 x 20in

framed 23 x 27in

\$3,000 - 5,000

Provenance

Clarence E. and Phyrne J. Sprague, Santa Ana, California.

Private collection, Southern California, by family descent.



69

69

KARL YENS (1868-1945)

Evening Glow

signed 'K. Yens' (lower left)

oil on canvas

5 1/4 x 6 1/4in

framed 7 1/2 x 8 3/4in

\$500 - 600

Provenance

Clarence E. and Phyrne J. Sprague, Santa Ana, California.

Private collection, Southern California, by family descent.

70

GEORGE KENNEDY BRANDRIFF (1890-1936)

East Port, Moret

signed 'Brandriff.' (lower right), titled and inscribed by the artist's widow (on the reverse)

oil on canvas

20 x 20in

framed 23 1/2 x 23 1/2in

\$1,000 - 2,000

Provenance

Clarence E. and Phyrne J. Sprague, Santa Ana, California.

Private collection, Southern California, by family descent.



70

71

GEORGE KENNEDY BRANDRIFF (1890-1936)

Going Home, Moret - France; Study for *Going Home, Moret - France* (a pair)

Home signed 'Brandriff' (lower right), titled and inscribed by the artist's widow (on the reverse);

Study unsigned

both oil on canvas

20 x 20in; 8 x 9in, respectively

framed 23 x 23in; 9 1/2 x 10 1/2in, respectively

\$1,200 - 1,800

Provenance

Clarence E. and Phyrne J. Sprague, Santa Ana, California.

Private collection, Southern California, by family descent.



71 (part lot)



72 (part lot)

72

GEORGE KENNEDY BRANDRIFF (1890-1936)

A Home - San Guano - France; Farm Home, Douarnenez - France, Brittany (a group of two) both unsigned, inscribed and dated by the artist's widow (on the reverse)

both oil on canvas paper

Guanole 11 1/8 x 14 1/8in; *Douarnenez* 11 x 13 1/4in

Guanole framed 15 x 18in; *Douarnenez* framed 14 1/2 x 16 3/4in

Both painted in 1929.

\$800 - 1,200



73

73

GEORGE KENNEDY BRANDRIFF (1890-1936)

Cloud Patterns, El Toro signed 'Brandriff' (lower right), titled and inscribed by the artist's widow (on the reverse)

oil on canvasboard

10 x 14in

framed 12 1/2 x 16 1/2in

\$600 - 800

Provenance

Clarence E. and Phyrne J. Sprague, Santa Ana, California.

Private collection, Southern California, by family descent.



73A

73A

WILLIAM WENDT (1865-1946)

On the Brow of Laudamus Hill
signed 'W. WENDT' (lower right) and titled (on the stretcher bar)
oil on canvas
18 x 24in
framed 27 x 34in
Painted in 1897.

US\$10,000-15,000

Provenance

Frederick Hastings Rindge, Sr. (1857-1905), Malibu, California.
Thence by family descent to the present owner.

Exhibited

Chicago, The Art Institute of Chicago, *Second Annual Exhibition of Works by Chicago Artists*, February 1 - 27, 1898, no. 229.

Literature

The Art Institute of Chicago, *Catalogue of an Exhibition of Works by Chicago Artists*, February 1 - 27, 1898, p. 31.
F.N. Levy, ed. *American Art Annual*, New York, The Macmillan Company, 1898, p. 163.
J.A. Walker, *Documents on the Life and Art of William Wendt, California's Painter Laureate of the Paysage moralise*, Big Pine, 1992, no. 497, p. 175.

In the summer of 1897, Wendt was invited by George Gardner Symons to travel from Chicago to California. Through the following spring, they lived and painted in Malibu. The present work depicts Laudamus Hill in Malibu Canyon, originally part of Rancho Topanga Malibu Simi Sequit, a Spanish land grant of 13,330 acres acquired by Frederick Hastings and (Rhoda) May Knight Rindge in 1892.¹ Laudamus Hill is situated across the Roosevelt Highway from the Adamson House. The Rindges began construction of a 50-room mansion on Laudamus Hill in 1929, which was sold to the Franciscan Order for the Serra Retreat in 1942.

1 W. South, J. Stern, J. Blake, In *Nature's Temple, The Life and Art of William Wendt*, Irvine, 2008, p. 234.



74

74

GEORGE KENNEDY BRANDRIFF (1890-1936)

Spiffing Up; Bays Edge (a group of two)
both unsigned, inscribed and dated by the artist's widow (on the reverse)

both oil on canvas affixed to board

Spiffing 5 3/4 x 7in; *Bays* 5 x 6in

Spiffing framed 8 1/2 x 10in; *Bays* framed 7 1/2 x 8 1/2in

Spiffing Painted in 1933; *Bays* Painted in 1929.

Provenance

Clarence E. and Phyrne J. Sprague, Santa Ana, California.
Private collection, Southern California, by family descent.

\$500 - 700

75

GEORGE KENNEDY BRANDRIFF (1890-1936)

Nuns (San Juan Capistrano)

unsigned, inscribed and dated by the artist's widow
(on the reverse)

oil on board

6 x 8in

framed 8 3/4 x 10 3/4in

Painted in 1933.

\$600 - 800

Provenance

Clarence E. and Phyrne J. Sprague, Santa Ana,
California.

Private collection, Southern California, by family
descent.



75

76

GEORGE KENNEDY BRANDRIFF (1890-1936)

Sunlit Cliff

signed, titled, inscribed, dated, and dedicated
'Serra, Capistrano by the Sea / To Frances for a
happy day in Aug 1920 / Geo K. Brandriff.' (on the
reverse)

oil on board

4 1/4 x 7in

framed 7 1/2 x 9 5/8in

Painted in 1920.

\$200 - 400

Provenance

Clarence E. and Phyrne J. Sprague, Santa Ana,
California.

Private collection, Southern California, by family
descent.



76



77

77

GEORGE KENNEDY BRANDRIFF (1890-1936)

Looking South from Lake Mary, High Sierra -

California

unsigned, inscribed and dated by the artist's widow
(on the reverse)

oil on canvas paper affixed to board

9 3/4 x 12in

framed 14 1/2 x 16 3/4in

\$400 - 600

Provenance

Clarence E. and Phyrne J. Sprague, Santa Ana,
California.

Private collection, Southern California, by family
descent.



78

78

GEORGE KENNEDY BRANDRIFF (1890-1936)

Desert Green - Hemet

signed 'Brandriff' (lower right), titled and inscribed by
the artist's widow (on the reverse)

oil on board

12 x 16in

framed 15 x 19in

\$700 - 1,000

Provenance

Clarence E. and Phyrne J. Sprague, Santa Ana,
California.

Private collection, Southern California, by family
descent.

79

GEORGE KENNEDY BRANDRIFF (1890-1936)

Overcast, Laguna Beach, California
unsigned, inscribed and dated by the artist's widow
(on the reverse)
oil on canvas affixed to Masonite
12 x 16in
framed 15 3/4 x 19 3/4in

\$300 - 500

Provenance

Clarence E. and Phyrne J. Sprague, Santa Ana,
California.
Private collection, Southern California, by family
descent.



79

80

GEORGE KENNEDY BRANDRIFF (1890-1936)

Douarnenez - France
unsigned, titled, dated and inscribed on a label from
the artist's widow (on the reverse)
oil on canvas affixed to board
11 x 15in
framed 15 1/2 x 19 1/4in
Painted in 1929.

\$800 - 1,200

Provenance

Clarence E. and Phyrne J. Sprague, Santa Ana,
California.
Private collection, Southern California, by family
descent.



80



81

81

GEORGE KENNEDY BRANDRIFF (1890-1936)

Rock Wash, Laguna Beach

unsigned, inscribed and dated by the artist's widow
(on the reverse)

oil on board

8 x 9 3/4in

framed 11 1/4 x 13in

Painted in 1928.

\$700 - 1,000

Provenance

Clarence E. and Phyrne J. Sprague, Santa Ana,
California.

Private collection, Southern California, by family
descent.



82

82

GEORGE KENNEDY BRANDRIFF (1890-1936)

Sunday Morning (Laguna Bungalow); Creek

Landscape (double-sided)

Sunday inscribed 'G.K.B.' (lower right) and titled (on
the frame); *Creek* unsigned.

oil on board

7 x 10in

framed 9 3/4 x 12 5/8in

Painted circa 1920.

\$2,000 - 3,000

Provenance

Clarence E. and Phyrne J. Sprague, Santa Ana,
California.

Private collection, Southern California, by family
descent.

83

GEORGE KENNEDY BRANDRIFF (1890-1936)

Brooding Canyon, New Mexico
signed 'Brandriff' (lower left), inscribed by the artist's
widow (on the reverse)
oil on canvas affixed to Masonite
14 x 18in
framed 19 x 23in
Painted in 1934.

\$800 - 1,200

Provenance

Clarence E. and Phyrne J. Sprague, Santa Ana,
California.
Private collection, Southern California, by family
descent.



83

84

GEORGE KENNEDY BRANDRIFF (1890-1936)

Laundry - Douarnenez - France
unsigned, inscribed and dated by the artist's widow
(on the reverse)
oil on canvas affixed to board
11 x 14in
framed 15 1/2 x 18 1/2in
Painted in 1929.

\$400 - 600

Provenance

Clarence E. and Phyrne J. Sprague, Santa Ana,
California.
Private collection, Southern California, by family
descent.



84



85

85

GEORGE KENNEDY BRANDRIFF (1890-1936)
 Marché, Douarnenez - France
 unsigned, inscribed and dated by the artist's widow
 (on the reverse)
 oil on canvas paper affixed to board
 11 x 14in
 framed 14 3/4 x 18in

\$700 - 1,000

Provenance

Clarence E. and Phyrne J. Sprague, Santa Ana,
 California.
 Private collection, Southern California, by family
 descent.



86

86

GEORGE KENNEDY BRANDRIFF (1890-1936)
 Harbor - Douarnenez - France
 unsigned, inscribed and dated by the artist's widow
 (on the reverse)
 oil on canvas affixed to board
 11 1/4 x 15in
 framed 14 3/4 x 18 3/8in

\$600 - 800

Provenance

Clarence E. and Phyrne J. Sprague, Santa Ana,
 California.
 Private collection, Southern California, by family
 descent.

87

GEORGE KENNEDY BRANDRIFF (1890-1936)

Douarnenez - France

unsigned, inscribed and dated by the artist's widow
(on the reverse)

oil on linen

11 1/4 x 12 1/2in

framed 14 3/4 x 16in

Painted in 1929.

\$400 - 600

Provenance

Clarence E. and Phyrne J. Sprague, Santa Ana,
California.

Private collection, Southern California, by family
descent.



87

88

GEORGE KENNEDY BRANDRIFF (1890-1936)

Goff Island, Laguna, California

unsigned, titled, inscribed and dated 'Laguna - Cal
/ Aug. 1920' by the artist and the artist's widow (on
the reverse)

oil on board

5 x 8in

framed 8 x 11in

Painted in 1920.

\$200 - 300

Provenance

Clarence E. and Phyrne J. Sprague, Santa Ana,
California.

Private collection, Southern California, by family
descent.



88



89

89

GEORGE KENNEDY BRANDRIFF (1890-1936)

French Tuna Boats I and II (a pair)

both unsigned, titled, dated and inscribed by the artist's widow (on the reverse)

both oil on board

5 1/2 x 6 1/2 in

framed 9 1/2 x 10 1/2 in

Painted in 1929.

Provenance

Clarence E. and Phyrne J. Sprague, Santa Ana, California.

Private collection, Southern California, by family descent.

\$1,000 - 1,500

90

ANNA ALTHEA HILLS (1882-1930)

Cloudy Morning, Arch Beach, Laguna, California
signed and dated 'A.A. Hills - 1920' (lower left), titled
and dated (on the reverse)
oil on board
7 x 9 1/4 in
framed 9 3/4 x 12 in
Painted in 1920.

\$2,000 - 3,000

Provenance

Clarence E. and Phyrne J. Sprague, Santa Ana,
California.
Private collection, Southern California, by family
descent.



90

91

ANNA ALTHEA HILLS (1882-1930)

Seal Point
unsigned, titled and inscribed 'Painted by Anna Hills
/ A gift from Miss Hills in 1922 / Frances Brandriff'
(on the reverse)
oil on board
7 x 5 in
framed 10 3/4 x 8 3/4 in
Painted *circa* 1922.

\$1,000 - 1,500

Provenance

Clarence E. and Phyrne J. Sprague, Santa Ana,
California.
Private collection, Southern California, by family
descent.



91



92

92

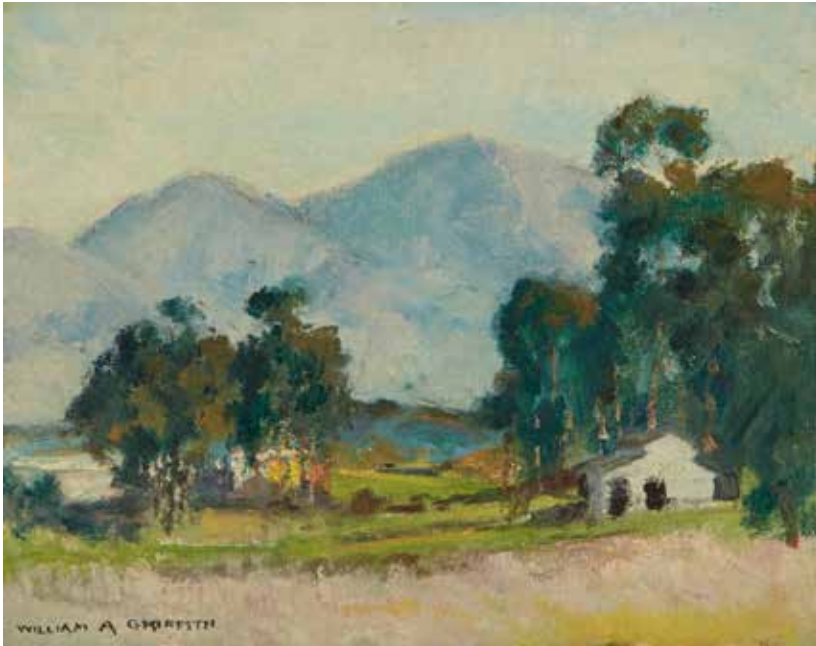
ALICE BLAIR THOMAS (1857-1945)

Pastoral landscape with sheep
signed and dated 'Alice Blair Thomas 1939.' (lower right)
oil on canvasboard
12 x 9in
framed 15 1/4 x 12 1/4in
Painted in 1939.

\$400 - 600

Provenance

Clarence E. and Phyrne J. Sprague, Santa Ana, California.
Private collection, Southern California, by family descent.



93 (part lot)

93

WILLIAM ALEXANDER GRIFFITH (1866-1940)

Irvine Ranch with Barn; Flowering Fields (a group of two)
both signed 'William A. Griffith' (lower left)
both oil on canvasboard
both 7 x 9in
framed 14 1/4 x 16 1/4in; 14 x 16in, respectively

\$1,500 - 2,500

Provenance

Clarence E. and Phyrne J. Sprague, Santa Ana, California.
Private collection, Southern California, by family descent.

94

CONWAY GRIFFITH (1863-1924)

Curling Wave

signed 'Conway Griffith' (lower left), titled and identified (on the backing)

watercolor on paper

6 x 8 1/2in

framed 11 1/2 x 14 1/2in

\$200 - 400

Provenance

Clarence E. and Phyrne J. Sprague, Santa Ana, California.

Private collection, Southern California, by family descent.



94

95

FREDERICK WILLIAM BECKER (1888-1974)

Big Tujunga Canyon

signed 'FREDERICK W. BECKER' (lower left)

oil on canvas laid down to Masonite

12 x 16in

framed 15 1/4 x 19 1/4in

\$700 - 1,000

Provenance

Clarence E. and Phyrne J. Sprague, Santa Ana, California.

Private collection, Southern California, by family descent.



95



96

96

FREDERICK WILLIAM BECKER (1888-1974)

Big Tujunga Canyon Sycamores
signed 'FREDERICK W. BECKER' (lower left)
oil on canvasboard
15 x 12in
framed 19 1/4 x 16in

\$600 - 800

Provenance

Clarence E. and Phyrne J. Sprague, Santa Ana, California.
Private collection, Southern California, by family descent.



97

97

FREDERICK WILLIAM BECKER (1888-1974)

Sycamores at Big Tujunga Canyon, California
signed 'FREDERICK W. BECKER' (lower left)
oil on canvas affixed to board
19 x 14 1/4in
framed 22 1/4 x 17 3/4in

\$800 - 1,200

Provenance

Clarence E. and Phyrne J. Sprague, Santa Ana, California.
Private collection, Southern California, by family descent.

98

HARRY B. WAGONER (1889-1950)

Desert landscape

signed 'H B Wagoner' (lower right)

oil on canvas affixed to Masonite

10 x 14in

framed 14 1/4 x 18 1/4in

\$800 - 1,200

Provenance

Clarence E. and Phyrne J. Sprague, Santa Ana, California.

Private collection, Southern California, by family descent.



98

99

CARL SAMMONS (1883-1968)

Mt. San Jacinto, Palm Springs

signed 'Carl Sammons' (lower right)

oil on board

10 x 14in

framed 15 x 19in

\$1,000 - 1,500

Provenance

Clarence E. and Phyrne J. Sprague, Santa Ana, California.

Private collection, Southern California, by family descent.



99



100

100

SAM HYDE HARRIS (1889-1977)

La Jolla Sand Dunes

signed 'Sam Hyde Harris' (lower left) and titled on a label (on the reverse)

oil on board

12 x 16in

framed 18 x 22in

\$1,000 - 2,000

Provenance

Private collection, Northern California.



101

101

JOHN BOND FRANCISCO (1863-1931)

Sunset over the Marshes

signed 'J. Bond Francisco' (lower right)

oil on canvas

16 x 20in

framed 20 3/4 x 24 1/2in

\$2,000 - 4,000

102

EDWARD NORTON WARD (BORN 1928)

Mount Conness

signed '-Edward Norton Ward-' (lower right), signed again and titled (on the reverse)

oil on canvas

16 x 20in

framed 18 5/8 x 22 3/4in

\$600 - 800

Provenance

Private collection, Carmel, California.



102

103

JEAN MANNHEIM (1861-1945)

River Landscape

signed 'J. Mannheim' (lower left)

oil on canvas

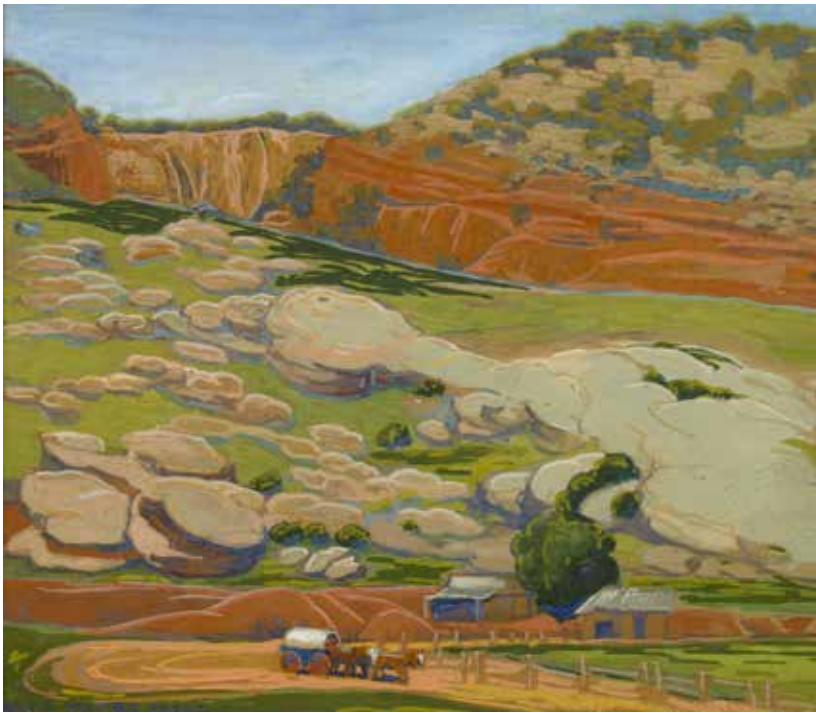
20 x 24in

framed 27 1/2 x 31 1/2in

\$2,000 - 4,000



103



104

104

ELSIE PALMER PAYNE (1884-1971)

Independence, Arizona

signed 'Elsie Palmer Payne' (lower left)

gouache on illustration board

11 1/2 x 14in

framed 20 1/4 x 21 3/4in

\$2,000 - 3,000

Provenance

Estate of the artist.

Petersen Galleries, Beverly Hills, California.

Sale, Bonhams, California and American Paintings and Sculpture, November 23, 2009, sale 17538, lot 139.

Literature

J. Stern and E.P. Hatcher, *Elsie Palmer Payne*, Beverly Hills, 1990, p. 92, pl.69, illus.



105

105

CARL SAMMONS (1883-1968)

Mt. San Geronio - Desert, Palm Springs, Calif.

signed 'Carl Sammons' (lower right) and titled (on the stretcher bar)

oil on canvas

25 x 36in

framed 32 1/2 x 42 1/2in

\$800 - 1,200

Provenance

Private collection, Northern California.

Sale, Butterfield & Butterfield, San Francisco and Los Angeles, American & California Paintings and Sculpture, June 15, 1995, lot 4278.

Private collection, Calabasas, California.

106

SAM HYDE HARRIS (1889-1977)

The Hideaway

signed 'Sam Hyde Harris' (lower left), signed again
and titled (on the reverse)

oil on Masonite

18 x 24in

framed 23 x 29in

\$1,500 - 2,500



106

107

MARK CHRISTOPHER WEBER (BORN 1949)

Grand Canyon

signed '© Weber' (lower left), signed again and
dated (on the reverse)

oil on Masonite

20 x 30in

framed 28 x 37in

\$1,000 - 1,500

Provenance

Private collection, Northern California.



107



108

108

SAM HYDE HARRIS (1889-1977)

Desert Wash (Palm Springs)

signed 'Sam Hyde Harris' (lower left)

oil on canvas

22 x 28in

framed 30 1/2 x 36 1/2in

\$1,500 - 2,500

Provenance

Private collection, Northern California.



109

109

SAM HYDE HARRIS (1889-1977)

Desert Wash

estate stamped 'Sam Hyde Harris' (lower right) and

stamped by Mrs. Sam Hyde Harris (on the reverse)

oil on canvas

18 x 24in

framed 24 x 30in

\$1,500 - 2,500

Provenance

Private collection, Northern California.

110

WILLIAM DARLING (1882-1963)

Clearing Skies

signed 'W Darling' (lower left)

oil on canvas affixed to masonite

30 x 40in

framed 37 1/4 x 47in

\$1,500 - 2,500

Provenance

Estate of the artist.

Private collection, Los Angeles, California,

purchased from the above.

Sale, Butterfields, San Francisco and Los Angeles,

California & American Paintings and Sculpture,

November 19, 2002, sale 7390D, lot 8312.

Private collection, California.

Exhibited

Orange County Annual, 1963.

San Francisco, M.H. de Young Memorial Museum,

23rd Annual Exhibition of the Society of Western

Artists, April 1 - May 3, 1964.



110

111

PAUL GRIMM (1891-1974)

Forgotten Places

signed 'Paul Grimm' (lower right), signed again and
titled (on the reverse)

oil on canvasboard

20 x 24in

framed 28 x 31in

\$2,500 - 3,500



111



112

112

GEORGE KENNEDY BRANDRIFF (1890-1936)

Studio, Laguna Beach

unsigned, inscribed, titled and dated 'Laguna Beach'
/ Painted in 1930 by George K. Brandriff / Mrs.
George K. Brandriff (widow)' (on the reverse)
oil on canvas

24 x 28in

framed 32 x 36in

Painted in 1930.

\$4,000 - 6,000

Provenance

Private collection, Santa Barbara, California.



113

113

HELEN ROUSSEAU (1895-1992)

Chinatown school recess time

signed 'H. Rousseau' (lower right)

oil on board

24 x 30in

framed 30 1/2 x 36 1/2in

\$2,000 - 3,000

Provenance

Private collection, Los Angeles, California.

114

JON CORBINO (1905-1964)

Horses and Rider

signed 'Corbino' (lower left) and titled on labels (on the reverse)

oil on canvas

18 x 20in

framed 23 x 25in

Painted circa 1940.

\$1,000 - 1,500

Provenance

Property of an Oregon Gentleman.



114

115

DARREL AUSTIN (1907-1994)

Lady with her Cat

signed and dated 'Darrel Austin 1959' (upper right) and titled on a label (on the reverse)

oil on canvas

40 1/4 x 30 1/4in

framed 49 x 39in

Painted in 1959.

\$600 - 800

Provenance

Perls Galleries, New York, New York.

Property of an Oregon Gentleman.



115



116

116

DARREL AUSTIN (1907-1994)

Figural Group with Angels

signed and dated 'Darrel Austin 1959' (lower right)

oil on canvas

66 x 48in

framed 75 x 56 1/2in

Painted in 1959.

\$1,500 - 2,500

Provenance

Property of an Oregon Gentleman.



117

117

DARREL AUSTIN (1907-1994)

Will-of-the-Wisp

signed and dated 'Darrel Austin 1958' (upper left)
and titled (on the reverse)

oil on canvas

8 x 10in

framed 14 x 16in

Painted in 1958.

\$800 - 1,200

Provenance

Perls Gallery, New York, New York.

Property of an Oregon Gentleman.

118

DARREL AUSTIN (1907-1994)

Swampland Catamount; The Toad; Giraffe; The Pet Lion; First Excursion; The Black Bull (a group of six)
Catamount signed and dated 'Darrel Austin '50' (lower right); *Toad* signed 'Darrel Austin' (upper left); *Giraffe* signed 'Darrel Austin' (lower right); *Lion* signed 'Darrel Austin' (lower left) and dated "'56' (lower right); *Excursion* signed and dated 'Darrel Austin '51' (lower right); *Bull* signed and dated 'Darrel Austin 1947' (lower right)
Lion pastel on paper; *Giraffe* oil on Masonite; the rest oil on canvas
 20 x 24in; 8 x 10in; 12 x 8 1/2in; 15 x 22in; 8 x 10in; 39 x 66in; respectively
 framed 30 x 34 1/4in; 13 1/4 x 15in; 17 1/4 x 13 1/4in; 22 x 29in; 12 1/4 x 14 3/8in; unframed, respectively
 Painted in 1952; 1957; 1940; 1956; 1951; 1947, respectively.

\$1,500 - 2,500

Provenance

Property of an Oregon Gentleman.
Toad, Giraffe, Lion and First Excursion
 Perls Galleries, New York, New York.
Giraffe
 Martha Jackson Gallery, New York, New York.

Exhibited

Bull
 Pittsburgh, Carnegie Institute, *Painting in the United States, 1947*, October 9 to December 7, 1947.



118 (part lot)

119

CLAUDE CHARLES BUCK (1890-1970)

Portrait of a Child with Clown
 signed 'Claude Buck' (lower left)
 oil on Masonite
 20 x 16in
 framed 26 3/4 x 23in
 Painted circa 1950.

\$1,500 - 2,500

Provenance

The artist.
 Robert Buck, the artist's son.
 Private collection, from the above by family descent.



119



120

120

CLAUDE CHARLES BUCK (1890-1970)

Still Life with Copper Kettle

signed 'Claude Buck' (lower right)

oil on Masonite

16 x 20in

framed 23 1/4 x 27 1/4in

Painted *circa* 1940.

\$1,500 - 2,500

Provenance

The artist.

Robert Buck, the artist's son.

Private collection, from the above by family descent.



121

121

WILLIAM CAMPBELL ESTLER (1912-1981)

Off to War

signed 'Wm Estler' (lower right)

oil on canvas

22 x 26in

framed 27 1/2 x 31 1/2in

\$3,000 - 5,000

122

WILLIAM CAMPBELL ESTLER (1912-1981)

The Picnic

signed 'W^m Estler' (lower right)

oil on canvas

24 x 34 1/4in

framed 30 x 40 1/4in

\$1,500 - 2,500

Provenance

Collection of the artist.

Thence by descent.

Private collection, San Francisco, California.



122

123

STANTON MACDONALD-WRIGHT (1890-1973)

Three Graces

signed 'S. Wright' (lower right), signed again, titled,
inscribed and dated 'Kyoto, Japan / 1971' (on the
reverse)

oil on wood panel

24 x 20in

framed 25 x 21in

Painted in 1971.

\$2,000 - 3,000

Provenance

Estate of the artist.



123



124

124

STANTON MACDONALD-WRIGHT (1890-1973)

Death of the Buddha; Homage to Pierre Louÿs

(double-sided)

both unsigned

oil on canvas

42 x 50in

framed 43 1/2 x 51 1/2in

Painted in 1945 and 1942, respectively.

\$3,000 - 5,000

Provenance

The estate of the artist.



125

125

BEN MESSICK (1901-1981)

Street Preacher

estate blindstamp (lower right)

pencil, colored pencil and white highlight on paper

32 x 35in

framed 43 x 46in

\$2,000 - 3,000

Provenance

Estate of the artist.

The Eclectic Framers, Redlands, California.

The Estate of Michael Johnson, Fallbrook, California.

126

MISCHA ASKENAZY (1888-1961)

Portrait of a Young Woman

signed and dated 'M. ASKINAZY [sic] - 1923' (lower right)

oil on canvas

40 x 30in

framed 47 x 37 1/4in

Painted in 1923.

\$3,000 - 5,000



126

127

TERRY DELAPP (BORN 1934)

Still life with orange flowers

initialed 'TD' (lower right)

acrylic on canvas

26 x 26in

framed 33 x 33in

\$2,000 - 4,000

Provenance

Private collection, Los Angeles, California.



127



128

128

FILASTRO MOTTOLA (1915-2008)

Sunbathers on Main Beach, Laguna
signed 'Mottola' (lower right) and inscribed 'Main
Beach' (on the reverse)

oil on board

10 x 8 3/4in

framed 15 x 13 3/4in

\$2,000 - 3,000

Provenance

Private collection, Los Angeles, California.



129

129

ROBERT L. DAVIS (20TH/21ST CENTURY)

Untitled (Farmstead)

signed 'Robert L. Davis' (lower right), signed again
and inscribed 'Associate Member O.P.A' (on the
reverse)

oil on panel

8 x 10in

framed 14 5/8 x 16 5/8in

\$500 - 700

Provenance

Private collection, Los Angeles, California.



130

130

GARY RAY (BORN 1952)

A Gully below the Santa Barbara Mountains
signed 'Gary Ray' (lower right)

oil on canvasboard

8 x 10in

framed 14 1/2 x 16 1/2in

Provenance

Private collection, Los Angeles, California.

\$500 - 700



131

THOMAS KENNETH ENMAN (1928-2012)

Arch Beach Heights, Laguna Beach; Point Lobos, California; Flowering Trees (a group of three) each signed, titled, dated, and inscribed (on the reverse); *Arch Beach* signed again 'T. Enman' (lower left); *Flowering* signed with initials and dated 'T.E. 89' (lower left)

Arch Beach and *Point Lobos* oil on canvas;

Flowering Trees oil on canvasboard

19 1/2 x 24in; 12 x 18in; 7 x 10in, respectively

framed 21 x 25in; framed 14 x 20in; unframed, respectively

Painted in 1989; 1988; 1989, respectively.

\$1,000 - 1,500

Provenance

Clarence E. and Phyrne J. Sprague, Santa Ana, California.

Private collection, Southern California, by family descent.

131

132

WILLIAM DORSEY (1942-2019)

California Landscape with Wildflowers

signed 'Wm. Dorsey' (lower right)

oil on canvas

36 x 60in

framed 41 x 65in

\$2,000 - 3,000



132

133

WILLIAM DORSEY (1942-2019)

Mountain Lake View

signed 'W. B. Dorsey' (lower right)

oil on Masonite

39 3/4 x 27 1/2in

framed 42 x 30 1/2in

\$1,000 - 1,500



133



134

134

BRIAN BLOOD (BORN 1962)

Distant Oaks

signed with the artist's initials 'BB' (lower right),
signed again, titled, dated '© 2000 BB' (on the
stretcher bar)

oil on canvas

18 x 24in

framed 26 1/2 x 32 1/2in

Painted in 2000.

\$2,000 - 3,000



135

135

**HENRY LAVENDER ADOLPHUS CULMER
(1854-1914)**

Alaskan glacier

signed and dedicated 'To Mr. + Mrs. J.E. Henson
from H.L.A. Culmer' (lower left)

watercolor on paper

10 x 16in

framed 18 x 24in

\$1,500 - 2,500

136

GERALD CASSIDY (1879-1934)

Navajo Boy

signed 'Gerald Cassidy' (lower center)

gouache, watercolor and graphite on paper

10 3/4 x 5 1/2 in

framed 15 x 21 in

\$2,500 - 3,500

Provenance

Fenn Galleries, Santa Fe, New Mexico.

Lockwood's Midwestern Galleries Inc., Cincinnati, Ohio.

Private collection, Rancho Santa Fe, California.



136

137

FRANK PAUL SAUERWEIN (1871-1910)

Indian Portrait

signed and dated 'FP Sauerwen [sic] 1901' (lower left)

oil on artistboard

13 3/4 x 10 in

framed 21 1/2 x 17 1/2 in

Painted in 1901.

\$4,000 - 6,000

Provenance

Robert L. Parsons Fine Art, Taos, New Mexico.

Private estate, Santa Barbara, California.

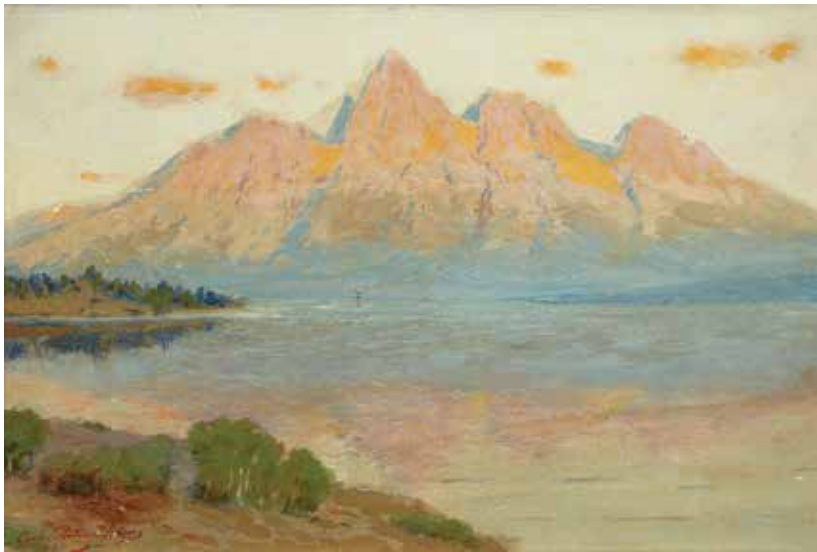
The work depicts Francisco, a Santa Clara pueblo Native American, based on a 1900 photograph.¹

A copy of the limited edition book, *Frank Paul Sauerwein: An Early Master Painter of the American Southwest, The Biography*, accompanies the lot.

¹ Michael Grauer, Elaine Maher Harrison and Steve Holmes, *Frank Paul Sauerwein: An Early Master Painter of the American Southwest, The Biography*, Santa Fe: Rio Grande Press, 2002, p. 131.



137



138

138

CHARLES PARTRIDGE ADAMS (1858-1942)

The Grand Tetons, Evening. From Jackson's Lake signed 'Charles. Partridge. Adams' (lower left), signed again, titled and dedicated 'To Inez with Best wishes and a Merry Christmas 1933 / Charles Partridge Adams' (on the reverse)

oil on board

8 x 12in

framed 12 x 16in

Painted *prior to* 1934.

\$1,500 - 2,500



139

139

HAROLD VON SCHMIDT (1893-1982)

Lake Tahoe, High Sierra Mountains (a group of three advertising studies)

each unsigned

each gouache on paper

6 x 4in; 7 x 5in; 6 x 4in, respectively

framed 21 x 25in

\$1,200 - 1,800

Provenance

Albert Burwinkle, New York, New York.

Private collection, New York, New York.

Private collection, Pennsylvania.

King Street Traders, Malvern, Pennsylvania.

Private collection, Pennsylvania, since 2008.

140

EDWARD BOREIN (1872-1945)

Roping Study

unsigned

pen and ink on Jonathan Bond wove paper

size 8 x 13 1/2 in

framed 17 x 22 in

\$800 - 1,200

Provenance

Private collection, Santa Barbara, California.



140

141

KEITH CHRISTIE (1935-2017)

Checking the Bogs

signed 'K. Christie ©' (lower right), signed again,
titled, dated and inscribed (on the reverse)

oil on canvas

18 x 14 in

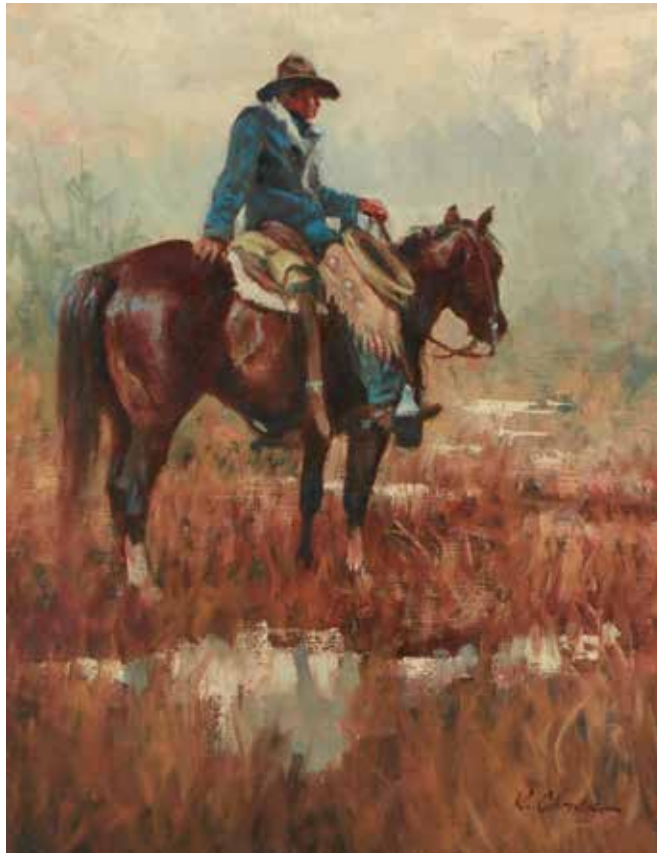
framed 26 3/8 x 22 1/8 in

Painted in 1991.

\$800 - 1,200

Provenance

Private collection, Santa Barbara, California.



141



142

142

JULIAN ROBLES (BORN 1933)

Cooling Off, Taos, New Mexico
signed, inscribed and dated 'Julian Robles / Taos
08' (lower right) and titled (on the reverse)
oil on canvasboard
14 x 18in
framed 18 1/8 x 22 1/8in
Painted in 2008.

\$800 - 1,200

Provenance

Nedra Matteucci Galleries, Santa Fe, New Mexico,
2010.



143

143

WALT GONSKE (BORN 1942)

Taos Pueblo Stock
signed 'Gonske' (lower left), signed again, titled and
numbered '1637' (on the reverse)
oil on canvas
20 x 24in
framed 28 x 32in

\$2,000 - 4,000

Provenance

Fenn Galleries, Ltd., Santa Fe, New Mexico, 1991.
Private collection, Santa Barbara, California.

144

DON WELLER (BORN 1937)

Black Bovine Boogie (Cow Cutting)

signed 'Don Weller' (lower right) and titled (on the reverse)

gouache on paper

11 x 18in

framed 20 5/8 x 27 1/4in

Painted in 2012.

\$1,500 - 2,500

Provenance

The artist, Peoa, Utah, 2012.

Private collection, Santa Barbara, California.



144

145

VALERIE HINZ (BORN 1956)

Rodeo, Eight Seconds Later

signed 'Hinz' (lower right)

oil on canvas

16 x 20in

framed 19 1/4 x 23 1/4in

\$2,000 - 3,000

Provenance

Sale, Keeneland / Cross Gate Gallery, Lexington, Kentucky, The Sporting Art Auction, November 20, 2013, lot 108.

Private collection, Santa Barbara, California.



145



146

146

JOHN WADE HAMPTON (1918-2000)

Lasso Them Horses!

signed and dated 'J M Hampton 1967' (lower left)
watercolor, pen and ink on Arches wove paper
sight 15 x 22in

framed 22 x 29in

\$1,500 - 2,500

Provenance

Sale, March in Montana, Great Falls, March 21,
2014, lot 592.

Private collection, Santa Barbara, California.



147

147

GEORGE FORD MORRIS (1873-1960)

The Race Mare

signed and dated 'Geo Ford Morris 47' (lower left)
and titled (on the reverse)

oil on illustration board

14 1/2 x 18 1/2in

framed 19 1/2 x 23 1/2in

Painted in 1947.

\$4,000 - 6,000

Provenance

The Estate of George Ford Morris, Massachusetts.
The Estate of Patricia Morris Davis, daughter of the
artist.

The Collection of Linda and James Grimm, Santa
Ynez, California.

Private collection, Santa Barbara, California.

148

TAL WALTON (BORN 1965)

Adobe Church

unsigned, titled and identified on a label (on the reverse)

oil and gold leaf on prepared ground marble gessoed board

12 x 12in

framed 14 x 14in

\$800 - 1,200

Provenance

Contemporary Southwest Galleries, Santa Fe, New Mexico.

Private collection, Santa Barbara, California.



148

149

CHARLES BERNINGHAUS (1905-1988)

Hollyhocks Blooming in New Mexico (Corner at Mora, New Mexico)

signed 'CHARLES BERNINGHAUS' (lower left)

oil on canvasboard

12 x 16in

framed 17 3/4 x 21 3/4in

\$1,000 - 2,000

Provenance

Sandra Wilson Galleries, Denver, Colorado.

Sale, Altermann Galleries, Santa Fe, August Auction, 2018, lot 5.

Private collection, Santa Barbara, California.



149



150

150

JIM NORTON (BORN 1953)

Indian Carrying a Spear
signed 'Jim C. Norton CA' (lower left)
oil on board
16 x 12in
framed 22 x 19in

\$2,500 - 3,500



151

151

BOB WYGANT (1927-2008)

Rain's Comin'
signed 'BOB WYGANT TA' (lower right)
acrylic on Masonite
24 x 36in
framed 35 x 47in

\$2,500 - 3,500

Provenance

Altermann & Morris Galleries, Santa Fe, New Mexico.
Private collection, Texas.

152

DENNIS M. DOHENY (BORN 1956)

The Old Foreman
signed and dated 'Doheny '75' (lower left)
oil on canvasboard
24 x 20in
framed 29 x 25in
Painted in 1975.

\$400 - 600

Provenance

Private collection, Beverly Hills, California.



152

153

LARRY PIRNIE (BORN 1940)

Stallion Round Up
signed 'Pirnie' (lower right), signed again and titled
'© Pirnie' (on the backing)
acrylic on canvas
24 x 48in
framed 27 x 51in

\$3,000 - 5,000

Provenance

Private collection, Portland, Oregon.

Exhibited

Cody, *The 30th Annual Buffalo Bill Art Show & Sale*,
September 23 - 24, 2011, lot 57.



153



154

154

WILLIAM DEAN FAUSETT (1913-1998)

Barn and Ranch in San Juan Mountains
signed 'D. Fausett' (lower right) and titled (on the reverse)

oil on Masonite

24 x 29 1/4in

framed 34 x 49in

\$1,000 - 2,000

Provenance

Private collection, Santa Barbara, California.



155

155

BURT PROCTER (1901-1980)

Time Out

signed 'Burt Procter' (lower center)

oil on Masonite

16 x 12in

framed 22 1/2 x 18 1/2in

\$1,000 - 2,000

Provenance

Private collection, Southern California.

156

BURT PROCTER (1901-1980)

Women of the Desert
signed 'Burt Procter' (lower center)
oil on Masonite
28 x 16in
framed 36 x 24in

\$1,000 - 2,000

Provenance

Private collection, Southern California.



156

157

BURT PROCTER (1901-1980)

Sea Gulls
signed 'Burt Procter' (lower left) and titled (on the
stretcher)
oil on canvas
16 x 20in
framed 23 x 27in

\$1,000 - 1,500

Provenance

Private collection, Southern California.



157



158

158

PETER HURD (1904-1984)

Water Hole

signed with initials 'P.H.' (lower right), inscribed and titled (on the backing)

watercolor on paper

5 3/8 x 5 3/4in

framed 12 x 13 1/4in

\$500 - 700

Provenance

Jamison Galleries, Santa Fe, New Mexico, July 1970.

Property from the Barbara Rogers and H. Wade Stinson Collection.



159

159

AMERICAN SCHOOL (20TH CENTURY)

Navajo family

unsigned

pencil on paper

4 1/4 x 8 1/2in

framed 11 3/4 x 14 3/8in

\$800 - 1,200

Provenance

Sale, Arrowsmith's, Prescott, Arizona, November 10, 1980 (as 'Maynard Dixon')

Property from the Barbara Rogers and H. Wade Stinson Collection.

160

OLAF CARL WIEGHORST (1899-1988)

Studies of a Horse

signed with the artist's device 'O - Wieghorst' (lower left)

felt tip pen on paper

size 10 x 8in

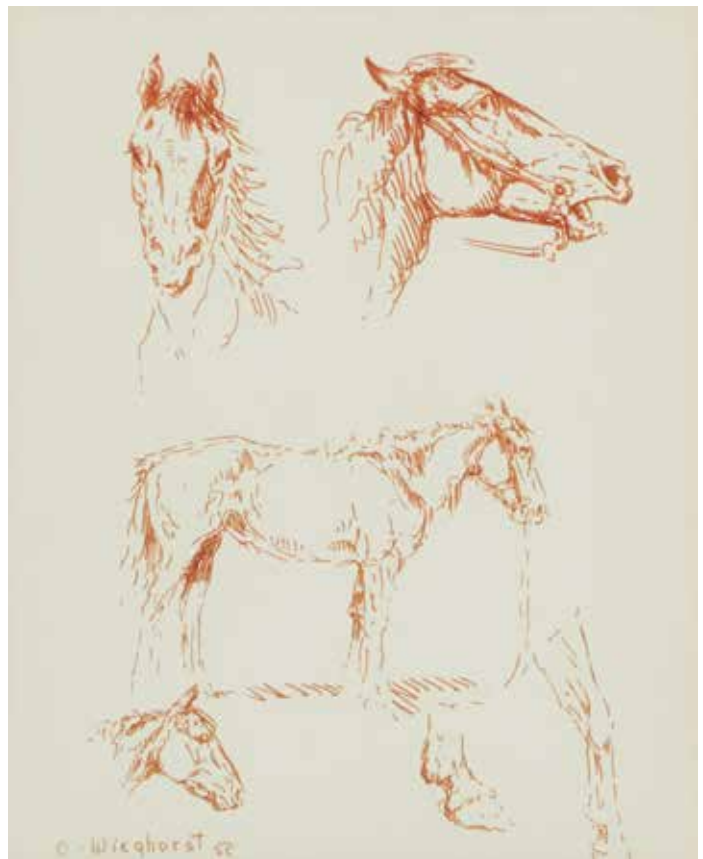
framed 22 3/4 x 18 3/4in

\$300 - 500

Provenance

Troy's Cowboy Art Gallery, Scottsdale, Arizona, 1972.

Property from the Barbara Rogers and H. Wade Stinson Collection.



160

161

JOE NEIL BEELER (1931-2006)

Sentinel; Texas Ranger (a group of two)

Sentinel inscribed 'JOE BEELER' and '16/20',

Ranger inscribed 'JOE BEELER' and '43/44', both foundry stamped 'BUFFALO BRONZE WORKS' (on the base)

bronze with reddish-brown and dark brown patina, respectively

13in and 12 1/2in high, respectively

Modeled and cast circa 1967.

\$1,200 - 1,800

Provenance

Collection of Arthur Warren Kincade (1896-1989), Wichita, Kansas.

Thence by descent to the present owner.

We wish to thank Jody Beeler for his kind assistance with cataloging the lot.



161



162

162

VERYL GOODNIGHT (BORN 1947)

Two ducks; Walking Cat; Three chipmunks (a group of three)

inscribed 'Goodnight 1980 © 11/30', 'Goodnight © 1986 34' and 'Veryl Goodnight 1988 1/30 ©' (on each base, respectively)

bronze with brown patina; bronze with dark brown patina; bronze with golden brown patina

4 3/4in; 6 1/4in; 6 1/2in high

5 3/4in; 7 3/4in; 8in, on wooden bases

\$1,000 - 2,000



163

163

VERYL GOODNIGHT (BORN 1947)

Prairie Picnic; Sleeping Deer (a group of two)

inscribed 'Veryl Goodnight 1990 © 11/35' and 'Goodnight © 1986 16/25' (on each base, respectively)

bronze with brown and turquoise patina; bronze with brown patina, respectively

14 1/2in; 6in high

16 1/2in; 7 1/2in, on wooden bases

\$400 - 600

164

VERYL GOODNIGHT (BORN 1947)

Two siamese cats
signed, dated and numbered 'Veryl Goodnight
25/25 1992 ©' (on the base)
bronze with red patina
6in high
7 1/2in high, on a wooden base

\$400 - 600



164

165

TIM CHERRY (BORN 1965)

Night Shadow
inscribed '© Tim Cherry AP /18 ' (on the tail)
bronze with grey patina
17in high
18 1/2in high, on a wooden base

\$2,000 - 3,000

Provenance

Private collection, Santa Barbara, California.



165



166

166

DAN OSTERMILLER (BORN 1956)

Marcella

inscribed '8/20 © Dan Ostermiller 98' (on the tail)
bronze with reddish-brown patina

20in high

Modeled and cast in 1998.

\$2,000 - 3,000

Provenance

Nedra Matteucci Galleries, Santa Fe, New Mexico,
1998.

167

RICHARD LOFFLER (BORN 1956)

Teenage Pride; Sitting Grizzly (a lot of two)

Teenage inscribed 'R. Loffler '91 5/21' and titled (on the base); *Grizzly* inscribed 'R. Loffler '90 1/21' (on the base)

bronze with dark brown patina; bronze with black-brown patina

12 1/4in; 5 1/4in high

15in; 7 1/2in high, on stone and wooden bases

Teenage modeled and cast in 1991; *Grizzly* modeled and cast in 1990.

\$800 - 1,200

Provenance

Property from the Estate of Comedian David Brenner.

END OF SALE



167



Bonhams

AUCTIONEERS SINCE 1793



Discover. Follow. Register. Bid.

The new Bonhams app makes it easy to take part in our auctions, wherever you are.



Index

A

Adams, Charles Partridge 138
 American School (20th Century) 13, 15, 159
 Askenazy, Mischa 126
 Austin, Darrel 115, 116, 117, 118

B

Becker, Frederick William 95, 96, 97
 Beeler, Joe Neil 161
 Berninghaus, Charles 149
 Bischoff, Franz Arthur 62
 Blood, Brian 134
 Borein, Edward 140
 Borglum, Elizabeth 32
 Botke, Jessie Arms 65
 Brandriff, George Kennedy 70, 71, 72, 73, 74, 75, 76, 77, 78, 79, 80, 81, 82, 83, 84, 85, 86, 87, 88, 89, 112

Brooks, Nicholas Alden 8
 Bruce, William 58
 Buck, Claude Charles 119, 120
 Burgdorff, Ferdinand 54, 55

C

Cadenasso, Giuseppe 29
 California School (19th/20th Century) 56
 Cassidy, Gerald 136
 Cherry, Tim 165
 Christie, Keith 141
 Corbino, Jon 114
 Coulter, William Alexander 10, 33
 Cram, Allen Gilbert 14
 Culmer, Henry Lavender Adolphus 135

D

Darling, William 110
 Davis, Robert L. 129
 DeLapp, Terry 127
 Demester, Eugène 5
 Denny, Gideon Jacques 38
 Doheny, Dennis M. 152
 Dorsey, William 132, 133
 Dougherty, Paul 9

E

Enman, Thomas Kenneth 131
 Estler, William Campbell 121, 122

F

Fausett, William Dean 154
 Francisco, John Bond 101
 French School 2

G

Gilbert, Arthur Hill 48, 49
 Glackens, William 18
 Gleason, Joe Duncan 34, 36, 37, 40, 42, 43, 44
 Gonske, Walt 143
 Goodnight, Veryl 162, 163, 164
 Gray, Percy 27
 Griffith, Conway 94
 Griffith, William Alexander 93
 Grimm, Paul 111

H

Hampton, John Wade 146
 Hansen, Jakob 3
 Harris, Sam Hyde 100, 106, 108, 109
 Hills, Anna Althea 90, 91
 Hinkle, Clarence 59, 60
 Hinz, Valerie 145
 Hurd, Peter 158

I

Italian School (19th/20th Century) 4

J

James, Trevor 11
 Jones, Leon Foster 19
 Jonnevold, Carl 30

K

Keith, William 22

L

L'Aubiniere, Constant 35
 Loffler, Richard 167
 Logan, Maurice 61

M

Macdonald-Wright, Stanton 123, 124
 Mannheim, Jean 31, 103
 Martinez, Xavier 23
 McComas, Francis John 52
 Messick, Ben 125
 Morgan, Mary DeNeale 45, 51, 53
 Morris, George Ford 147
 Mottola, Filastro 128
 Myers, Jerome 17
 Myers, Mark Richard 41

N

Nicholson, Lillie May 50
 Norton, Jim 150

O

O'Shea, John 46
 Ostermiller, Dan 166

P

Pages, Jules Francois 28
 Payne, Elsie Palmer 104
 Pennoyer, Albert Sheldon 7
 Piazzoni, Gottardo Fidele Ponziano 24, 25
 Pirnie, Larry 153
 Procter, Burt 155, 156, 157
 Putnam, Arthur 26

R

Ray, Gary 130
 Redmond, Granville 66, 67
 Reiffel, Charles 63
 Richardson, Mary Curtis 6
 Ritman, Louis 16
 Robles, Julian 142
 Rousseau, Helen 113

S

Sammons, Carl 99, 105
 Sauerwein, Frank Paul 137
 Scott, Henry 1
 Smith, Jack Wilkinson 64
 Soyer, Moses 20, 21
 St. Clair, Norman 57

T

Teague, Donald 47
 Thimgan, David 39
 Thomas, Alice Blair 92

V

Von Schmidt, Harold 139

W

Wagoner, Harry B. 98
 Walton, Tal 148
 Ward, Edward Norton 102
 Weber, Mark Christopher 107
 Weller, Don 144
 White, Orrin A. 68
 Wieghorst, Olaf Carl 160
 Wygant, Bob 151

Y

Yens, Karl 69
 Yorke, William Gay 12

Collection Index

Clarence E. and Phyrne J. Sprague, Santa Ana, California
4, 5, 48, 56, 68, 69, 70, 71, 72, 73, 74, 75, 76, 77, 78, 79, 80, 81, 82, 83, 84, 85, 86, 87, 88, 89, 90, 91, 92, 93, 94, 95, 96, 97, 98, 99, 100, 131

The Collection of Arthur Warren Kincade, Wichita, Kansas
161

The Estate of Michael Johnson, Fallbrook, California
125

The Estate of Ruth Westphal, Newport Beach, California
19

Private collection, Carmel, California
46, 50, 51, 52, 53, 102

Private collection, Santa Barbara, California
140, 141, 142, 143, 144, 145, 146, 147, 148, 149, 165, 166

Property from the Collection of The Kelton Foundation
12, 13, 35, 36, 37, 38, 42, 43, 44

Property from the Estate of Russell Chatham
23, 24, 25, 26

Property of an Oregon Gentleman
20, 21, 114, 115, 116, 117, 118

GLOSSARY

TYPICAL HEADINGS USED IN THE CATALOG

The following are examples of the terminology used in the catalog. While every reasonable effort has been made to ensure that the statements made in the catalog are correct, all statements and terms in this catalog are subject to the provisions of the Conditions of Sale (particularly paragraphs 7 and 8) and the Galleries and Consignors make no warranties or representations with respect to any lot.

AUTHORSHIP

(ARTIST)

This is our highest category of authenticity and, as such, indicates that the work, in our best judgment, is by the named artist. (No unqualified statement as to authorship is made or intended.)

ATTRIBUTED TO (ARTIST)

In our best judgment a work of the period and in the style of the artist; may be the work of the artist, in whole or in part, but less certainty of authorship than in the preceding category.

STUDIO OF (ARTIST)

In our best judgment a work by an unknown handworking in the artist's studio.

CIRCLE OF (ARTIST)

In our best judgment a work of the period of the artist and closely related to the artist's style.

FOLLOWER OF (ARTIST)

In our best judgment a work by an artist working in the artist's style, in his lifetime or shortly thereafter.

MANNER OF (ARTIST)

In our best judgment a work in the style of the artist, possibly of a later date.

AFTER (ARTIST)

In our best judgment a copy of the known work by the artist.

TITLE

If there is a generally accepted title of the lot, that title is given at the beginning of the description. If the work does not have a title or the title is not known to us, a descriptive title is given.

SIGNATURE

SIGNED

The signature is, in our opinion, the signature of the artist.

BEARS SIGNATURE

Has a signature which, in our opinion, might be the signature of the artist.

CONDITIONS

No statement is implied or intended regarding the imperfections or general condition of a work. If you have questions on the condition of a work, the appropriate department would be glad to provide its opinion, but all works are sold as viewed.

Bonhams and the Seller assume no risk or responsibility for the authenticity of authorship of lots executed before 1870.

Conditions of sale

The following Conditions of Sale, as amended by any published or posted notices or verbal announcements during the sale, constitute the entire terms and conditions on which property listed in the catalog shall be offered for sale or sold by Bonhams & Butterfields Auctioneers Corp. and any consignor of such property for whom Bonhams acts as agent. By participating in this sale, you agree to be bound by these terms and conditions.

If live online bidding is available for the subject auction, additional terms and conditions of sale relating to online bidding will apply; see www.bonhams.com/WebTerms for the supplemental terms. As used herein, "Bonhams," "we" and "us" refer to Bonhams & Butterfields Auctioneers Corp.

1. As used herein, the term "bid price" means the price at which a lot is successfully knocked down to the buyer. The term "purchase price" means the aggregate of (a) the bid price, (b) a PREMIUM retained by us and payable by the buyer (the "buyer's premium"), EQUAL TO 27.5% OF THE FIRST \$12,500 OF THE BID PRICE, PLUS 25% OF THE AMOUNT OF THE BID PRICE ABOVE \$12,500 UP TO AND INCLUDING \$600,000, PLUS 20% OF THE AMOUNT OF THE BID PRICE ABOVE \$600,000 UP TO AND INCLUDING \$6,000,000, PLUS 14.5% OF THE AMOUNT OF THE BID PRICE ABOVE \$6,000,000, and (c) unless the buyer is exempt by law from the payment thereof, any Alabama, Arizona, California, Colorado, Connecticut, Florida, Georgia, Hawaii, Idaho, Illinois, Iowa, Indiana, Kentucky, Louisiana, Maine, Maryland, Massachusetts, Michigan, Minnesota, Mississippi, Nebraska, Nevada, New Jersey, New York, North Carolina, Ohio, Oklahoma, Pennsylvania, Rhode Island, South Carolina, Texas, Utah, Virginia, Washington, D.C., Washington state, West Virginia, Wisconsin, Wyoming or other state or local sales tax (or compensating use tax) and other applicable taxes. With regard to New York sales tax, please refer to the "Sales and Use Tax" section of these Conditions of Sale.

2. In order to bid at the sale, prospective bidders must submit to Bonhams a completed bidder registration form (appearing at the end of this catalog) and any other requested information or references. New bidders and bidders who have not recently updated their registration information must pre-register to bid at least two business days before the sale. Individuals will be required to provide government-issued proof of identity and proof of address. Entity clients will be required to provide documentation including confirmation of entity registration showing the registered name, confirmation of registered address, documentary proof of officers and beneficial owners, proof of authority to transact on behalf of the entity and government-issued proof of identity for the individual who is transacting on the entity's behalf.

We may also request a financial reference and/or deposit from bidders before approving the bidder registration. In the event a deposit is submitted and you are not the successful bidder, your deposit will be returned to you. If you are the successful bidder, any such deposit will be credited to offset the appropriate portion of the purchase price.

We reserve the right to request further information, including regarding the source of funds, in order to complete bidder identification and registration procedures (including completing any anti-money laundering and/or anti-terrorism financing checks we may require) to our satisfaction. If our bidder identification and registration procedures are not satisfied, we may, in our sole discretion, decline to register any bidder or reject any bid or cancel any sale to such bidder.

Every bidder shall be deemed to act as a principal unless prior to the commencement of the sale there is a written acceptance by Bonhams of a bidder registration form completed and signed by the principal which clearly states that the authorized bidding agent is acting on behalf of the named principal. Absent such written acceptance by Bonhams, any person placing a bid as agent on behalf of another (whether or not such person has disclosed that fact or the identity of the principal) may be jointly and severally

liable with the principal under any contract resulting from the acceptance of a bid. Every bidder shall be responsible for any use of its assigned paddle or bidding account, regardless of the circumstances.

3. You represent and warrant that: (i) you have provided us with true and correct copies of valid identification and proof of residence and, if applicable, financial and/or corporate documents; (ii) neither you, your principal (if applicable, and subject to Bonhams' prior written acceptance pursuant to paragraph 2 above), nor any individual or entity with a beneficial or ownership interest in either or in the purchase transaction is on the Specially Designated Nationals List maintained by the Office of Foreign Assets Control of the U.S. Department of the Treasury nor subject to any other sanctions or embargo program or regulation in effect in the United States, European Union, England and Wales, or other applicable jurisdictions; (iii) if you are acting as an agent for a principal, you have conducted appropriate due diligence into such principal, and agree that Bonhams shall be entitled to rely upon such due diligence, you will retain adequate records evidencing such due diligence for a period of five (5) years following the consummation of the sale, and will make these records available for inspection upon Bonhams' request; (iv) neither the purchase transaction (including your bidding activity) nor the purchase funds are connected with nor derive from any criminal activity, and they are not designed to nor have they or shall they, violate the banking, anti-money laundering, or currency transfer laws or other regulations (including without limitation, import-export laws) of any country or jurisdiction, or further any other unlawful purpose, including without limitation collusion, anti-competitive activity, tax evasion or tax fraud.

You acknowledge and agree that we may rely upon the accuracy and completeness of the foregoing warranties.

4. On the fall of the auctioneer's hammer, the highest bidder shall have purchased the offered lot in accordance and subject to compliance with all of the conditions set forth herein and (a) assumes full risk and responsibility therefor, (b) if requested will sign a confirmation of purchase, and (c) will pay the purchase price in full or such part as we may require for all lots purchased. No lot may be transferred.

Unless otherwise agreed, payment in good, cleared funds is due and payable within five (5) business days following the auction sale. Whenever the buyer pays only a part of the total purchase price for one or more lots purchased, we may apply such payments, in our sole discretion, to the lot or lots we choose. Payment will not be deemed made in full until we have received good, cleared funds for all amounts due. Title in any purchased property will not pass until full and final payment has been received by Bonhams. Accounts must be settled in full before property is released to the buyer. In the event property is released earlier, such release will not affect the passing of title or the buyer's obligation to timely remit full payment.

We reserve the right to refuse to accept payment from a source other than the registered bidder or buyer of record. Once an invoice is issued, we cannot change the buyer's name on an invoice.

Payment for purchases must be made in the currency in which the sale is conducted. Bonhams' preferred payment method is by wire transfer. For final purchases exceeding US \$25,000.00, all payments must be in the form of wire transfer unless other arrangements have been approved in advance. For final purchases below US \$25,000.00, payment may also be made in or by the following methods:

- (i) Cash. Please note that the amount of cash that can be accepted from a given purchaser is limited to US \$5,000 per auction sale (whether by single or multiple related payments). If the amount payable exceeds that sum, the balance must be paid by another method.
- (ii) Cashier's check, money order, or personal check with approved credit drawn on a U.S. bank. A processing fee will be assessed on any returned checks.
- (iii) Visa, MasterCard, American Express or Discover debit

or credit card issued in the name of the purchaser or record. Only one debit or credit card may be used for payment of an account balance. This method of payment may not be available to first time purchasers.

To the fullest extent permitted by applicable law, the buyer grants us a security interest in the property, and we may retain as collateral security for the buyer's obligations to us, any property and all monies held or received by us for the account of the buyer, in our possession. We also retain all rights of a secured party under the Uniform Commercial Code (which shall mean the New York Uniform Commercial Code, except where the Uniform Commercial Code of another state governs the perfection of a security interest in collateral located in that state), and you agree that we may file financing statements without your signature. If the foregoing conditions or any other applicable conditions herein are not complied with, in addition to all other remedies available to us and the consignor by law, we may at our election: (a) hold the buyer liable for the full purchase price and any late charges, collection costs, attorneys' fees and costs, expenses and incidental damages incurred by us or the consignor arising out of the buyer's breach; (b) cancel the sale, retaining as liquidated damages all payments made by the buyer; and/or (c) cancel the sale and/or resell the purchased property, at public auction and/or by private sale, and in such event the buyer shall be liable for the payment of all consequential damages, including any deficiencies or monetary losses, and all costs and expenses of such sale or sales, our commissions at our standard rates, all other charges due hereunder, all late charges, collection costs, attorneys' fees and costs, expenses and incidental damages. In addition, where two or more amounts are owed in respect of different transactions by the buyer to us, to Bonhams 1793 Limited and/or to any of our other affiliates, subsidiaries or parent companies worldwide within the Bonhams Group, we reserve the right to apply any monies paid in respect of a transaction to discharge any amount owed by the buyer. If all fees, commissions, premiums, bid prices and other sums due to us from the buyer are not paid promptly as provided in these Conditions of Sale, we reserve the right to impose a finance charge equal to 1.5% per month (or, if lower, the maximum nonusurious rate of interest permitted by applicable law), on all amounts due to us beginning on the 31st day following the sale until payment is received, in addition to other remedies available to us by law.

5. We reserve the right to withdraw any property and to divide and combine lots at any time before such property's auction. Unless otherwise announced by the auctioneer at the time of sale, all bids are per lot as numbered in the catalog and no lots shall be divided or combined for sale.

6. We reserve the right to reject a bid from any bidder, to split any bidding increment, and to advance the bidding in any manner the auctioneer may decide. In the event of any dispute between bidders, or in the event the auctioneer doubts the validity of any bid, the auctioneer shall have sole and final discretion either to determine the successful bidder, re-open the bidding, or to cancel the sale and re-offer and resell the article in dispute. If any dispute arises after the sale, our sales records shall be conclusive in all respects.

We further reserve the right to cancel the sale of any property if (i) you are in breach of your representations and warranties as set forth in paragraph 3 above; (ii) we, in our sole discretion, determine that such transaction might be unlawful or might subject Bonhams or the consignor to any liability to any third party; or (iii) there are any other grounds for cancellation under these Conditions of Sale.

7. If we are prevented by fire, theft or any other reason whatsoever from delivering any property to the buyer or a sale otherwise cannot be completed, our liability shall be limited to the sum actually paid therefor by the buyer and shall in no event include any compensatory, incidental or consequential damages.

8. All lots in the catalog are offered subject to a reserve unless otherwise indicated in the catalog. The reserve is the

confidential minimum bid price at which such lot will be sold and it does not to exceed the low estimate value for the lot. If a lot is offered subject to a reserve, we may implement such reserve by bidding on behalf of the consignor, whether by opening bidding or continuing bidding in response to other bidders until reaching the reserve. If we have an interest in an offered lot and the proceeds therefrom other than our commissions, we may bid up to the reserve to protect such interest. If the auctioneer determines that any opening or subsequent bid is below the reserve for a lot, (s)he may reject such opening bid and withdraw the item from sale. **CONSIGNORS ARE NOT ALLOWED TO BID ON THEIR OWN ITEMS.**

9. Other than as provided in the Limited Right of Rescission with respect to identification of authorship, all property is sold "AS IS" and any statements contained in the catalog or in any advertisement, bill of sale, announcement, condition report, invoice or elsewhere as to period, culture, source, origin, media, measurements, size, quality, rarity, provenance, importance, exhibition and literature of historical relevance, merchantability, fitness for a particular purpose, or physical condition ARE QUALIFIED STATEMENTS OF OPINION AND NOT REPRESENTATIONS, WARRANTIES, OR ASSUMPTION OF LIABILITY. Neither Bonhams nor the consignor shall be responsible for any error or omission in the catalog description of any property. No employee or agent of Bonhams is authorized to make on our behalf or on that of the consignor any representation or warranty, oral or written, with respect to any property.

10. All purchased property shall be removed from the premises at which the sale is conducted by the date(s) and time(s) set forth in the "Buyer's Guide" portion of this catalog. If not so removed, daily storage fees will be payable to us by the buyer as set forth therein. We reserve the right to transfer property not so removed to an offsite warehouse at the buyer's risk and expense, as set forth in more detail in the "Buyer's Guide." Packing and handling of purchased lots are the responsibility of the buyer and at the buyer's entire risk, as are the identification, application for, and cost(s) of obtaining of any necessary export, import, restricted material (e.g. endangered species) or other permit for such lots.

For an additional fee, Bonhams may provide packing and shipping services for certain items as noted in the "Buyer's Guide" section of the catalog.

11. The copyright in the text of the catalog and the photographs, digital images and illustrations of lots in the catalog belong to Bonhams or our licensors. You will not reproduce or permit anyone else to reproduce such text, photographs, digital images or illustrations without our prior written consent. Bonhams and the consignor make no representation or warranty as to whether the buyer acquires any copyrights on the purchase of an item of Property.

12. Bonhams may, in our discretion, as a courtesy and free of charge, execute bids on your behalf if so instructed by you, provided that neither Bonhams nor our employees or agents will be liable for any error or default (whether human or otherwise) in doing so or for failing to do so. Without limiting the foregoing, Bonhams (including our agents and employees) shall not be responsible for any problem relating to telephone, online, or other bids submitted remotely through any means, including without limitation, any telecommunications or internet fault or failure, or breakdown or problems with any devices or online platforms, including third-party online platforms, regardless of whether such issue arises with our, your, or such third-party's technology, equipment, or connection. By participating at auction by telephone or online, bidders expressly consent to the recording of their bidding sessions and related communications with Bonhams and our employees and agents, and acknowledge their acceptance of these Conditions of Sale as well as any additional terms and conditions applicable to any such bidding platform or technology.

13. These Conditions of Sale shall bind the successors

and assigns of all bidders and buyers and inure to the benefit of our successors and assigns. No waiver, amendment or modification of the terms hereof (other than posted notices or oral announcements during the sale) shall bind us unless specifically stated in writing and signed by us. No act or omission of Bonhams, its employees or agents, nor any failure thereof to exercise any remedy hereunder, shall operate or be deemed to operate as a waiver of Bonhams' rights under these Conditions of Sale. If any part of these Conditions of Sale is for any reason invalid or unenforceable, the rest shall remain valid and enforceable.

14. These Conditions of Sale and the buyer's and our respective rights and obligations hereunder shall be governed by and construed and enforced in accordance with the laws of the State of New York. Any dispute, controversy or claim arising out of or relating to this agreement, or the breach, termination or validity thereof, brought by or against Bonhams (but not including claims brought against the consignor by the buyer of lots consigned hereunder) shall be resolved by the procedures set forth below.

15. You accept and agree that Bonhams will hold and process your personal information and may share and use it as required by law and as described in, and in line with Bonhams' Privacy Policy, available at website at www.bonhams.com/legals/. If you desire access, update, or restriction to the use of your personal information, please email data.protection@bonhams.com.

SALES AND USE TAX

New York sales tax is charged on the hammer price, buyer's premium and any other applicable charges on any property collected or delivered in New York State, regardless of the state or country in which the buyer resides or does business. Buyers who make direct arrangements for collection by a shipper who is considered a "private" or "contract" carrier by the New York Department of Taxation and Finance will be charged New York sales tax, regardless of the destination of the property. Property collected for delivery to a destination outside of New York by a shipper who is considered a "common carrier" by the New York Department of Taxation and Finance (e.g. United States Postal Service, United Parcel Service, and FedEx) is not subject to New York sales tax, but if it is delivered into any state in which Bonhams is registered or otherwise conducts business sufficient to establish a nexus, Bonhams may be required by law to collect and remit the appropriate sales tax in effect in such state. Property collected for delivery outside of the United States by a freight-forwarder who is registered with the Transportation Security Administration ("TSA") is not subject to New York sales tax.

MEDIATION AND ARBITRATION PROCEDURES

(a) Within 30 days of written notice that there is a dispute, the parties or their authorized and empowered representatives shall meet by telephone and/or in person to mediate their differences. If the parties agree, a mutually acceptable mediator shall be selected and the parties will equally share the fees and expenses of mediation. The mediator shall be a retired judge or an attorney familiar with commercial law and trained in or qualified by experience in handling mediations. Any communications made during the mediation process shall not be admissible in any subsequent mediation, arbitration or judicial proceeding. All proceedings and any resolutions thereof shall be confidential, and the terms governing arbitration set forth in paragraph (c) below shall govern.

(b) If mediation does not resolve all disputes between the parties, or in any event no longer than 60 days after receipt of the written notice of dispute referred to above, the parties shall submit the dispute for binding arbitration before a single neutral arbitrator. Such arbitrator shall be a retired judge or an attorney familiar with commercial law and trained in or qualified by experience in handling arbitrations. Such arbitrator shall make all appropriate disclosures required by law. The arbitrator shall be drawn from a panel of a national or international arbitration service agreed to by the parties,

and shall be selected as follows: (i) If the arbitration service has specific rules or procedures, those rules or procedures shall be followed; (ii) If the arbitration service does not have rules or procedures for the selection of an arbitrator, the arbitrator shall be an individual jointly agreed to by the parties. If the parties cannot agree on an arbitration service, the arbitration shall be conducted by Judicial Arbitration and Mediation Services, Inc. ("JAMS") or another national or international alternative dispute resolution ("ADR") provider of Bonhams' choice, and the arbitrator shall be selected in accordance with JAMS' Streamlined Arbitration Rules and Procedures or the rules of the other ADR provider selected by Bonhams. The arbitrator's award shall be in writing and shall set forth findings of fact and legal conclusions.

(c) Unless otherwise agreed to by the parties or provided by the published rules of the arbitration service:

- (i) The arbitration shall occur within 60 days following the selection of the arbitrator;
- (ii) The arbitration shall be conducted in New York, New York; and
- (iii) Discovery and the procedure for the arbitration shall be as follows:
 - A. All arbitration proceedings shall be confidential;
 - B. The parties shall submit written briefs to the arbitrator no later than 15 days before the arbitration commences;
 - C. Discovery, if any, shall be limited as follows:
 - (I) Requests for no more than 10 categories of documents, to be provided to the requesting party within 14 days of written request therefor;
 - (II) No more than two (2) depositions per party, provided however, the deposition(s) are to be completed within one (1) day;
 - (III) Compliance with the above shall be enforced by the arbitrator in accordance with New York law;
 - D. Each party shall have no longer than eight (8) hours to present its position. The entire hearing before the arbitrator shall not take longer than three (3) consecutive days;
 - E. The award shall be made in writing no more than 30 days following the end of the proceeding. Judgment upon the award rendered by the arbitrator may be entered by any court having jurisdiction thereof.

To the fullest extent permitted by law, and except as required by applicable arbitration rules, each party shall bear its own attorneys' fees and costs in connection with the proceedings and shall share equally the fees and expenses of the arbitration.

LIMITED RIGHT OF RESCISSION

If within one (1) year from the date of sale, the original buyer (a) gives written notice to us alleging that the identification of Authorship (as defined below) of such lot as set forth in the UPPERCASE TYPE heading of the catalog description of such lot (as amended by any saleroom notices or verbal announcements during the sale) is not substantially correct based on a fair reading of the catalog (including the terms of any glossary contained therein), and (b) within 10 days after such notice returns the lot to us in the same condition as at the time of sale, and (c) establishes the allegation in the notice to our satisfaction (including by providing one or more written opinions by recognized experts in the field, as we may reasonably require), then the sale of such lot will be rescinded and, unless we have already paid to the consignor monies owed him in connection with the sale, the original purchase price will be refunded.

If, prior to receiving such notice from the original buyer alleging such defect, we have paid the consignor monies owed him in connection with the sale, we shall pay the original buyer the amount of our commissions, any other sale proceeds to which we are entitled and applicable taxes received from the buyer on the sale and make demand on the consignor to pay the balance of the original purchase price to the original buyer. Should the consignor fail to pay such amount promptly, we may disclose the identity of

Conditions of sale - Continued

the consignor and assign to the original buyer our rights against the consignor with respect to the lot the sale of which is sought to be rescinded. Upon such disclosure and assignment, any liability of Bonhams as consignor's agent with respect to said lot shall automatically terminate.

The foregoing limited right of rescission is available to the original buyer only and may not be assigned to or relied upon by any subsequent transferee of the property sold. The buyer hereby accepts the benefit of the consignor's warranty of title and other representations and warranties made by the consignor for the buyer's benefit. Nothing in this section shall be construed as an admission by us of any representation of fact, express or implied, obligation or responsibility with respect to any lot. **THE BUYER'S SOLE AND EXCLUSIVE REMEDY AGAINST BONHAMS FOR ANY REASON WHATSOEVER IS THE LIMITED RIGHT OF RESCISSION DESCRIBED IN THIS SECTION.**

"Authorship" means only the identity of the creator, the period, culture and source or origin of the lot, as the case may be, as set forth in the UPPERCASE TYPE heading of the print catalog entry. The right of rescission does not extend to: (a) works of art executed before 1870 (unless these works are determined to be counterfeits created since 1870), as this is a matter of current scholarly opinion which can change; (b) titles, descriptions, or other identification of offered lots, which information normally appears in lower case type below the UPPERCASE TYPE heading identifying the Authorship; (c) Authorship of any lot where it was specifically mentioned that there exists a conflict of specialist or scholarly opinion regarding the Authorship of the lot at the time of sale; (d) Authorship of any lot which as of the date of sale was in accordance with the then generally-accepted opinion of scholars and specialists regarding the same; or (e) the identification of periods or dates of creation in catalog descriptions which may be proven inaccurate by means of scientific processes that are not generally accepted for use until after publication of the catalog in which the property is offered or that were unreasonably expensive or impractical to use at the time of such publication.

LIMITATION OF LIABILITY

EXCEPT AS EXPRESSLY PROVIDED ABOVE, ALL PROPERTY IS SOLD "AS IS." NEITHER BONHAMS NOR THE CONSIGNOR MAKES ANY REPRESENTATION

OR WARRANTY, EXPRESS OR IMPLIED, AS TO THE MERCHANTABILITY, FITNESS OR CONDITION OF THE PROPERTY OR AS TO THE CORRECTNESS OF DESCRIPTION, GENUINENESS, ATTRIBUTION, PROVENANCE OR PERIOD OF THE PROPERTY OR AS TO WHETHER THE BUYER ACQUIRES ANY COPYRIGHTS OR OTHER INTELLECTUAL PROPERTY RIGHTS IN LOTS SOLD OR AS TO WHETHER A WORK OF ART IS SUBJECT TO THE ARTIST'S MORAL RIGHTS OR OTHER RESIDUAL RIGHTS OF THE ARTIST. THE BUYER EXPRESSLY ACKNOWLEDGES AND AGREES THAT IN NO EVENT SHALL BONHAMS BE LIABLE FOR ANY DAMAGES INCLUDING, WITHOUT LIMITATION, ANY COMPENSATORY, INCIDENTAL OR CONSEQUENTIAL DAMAGES. IN NO EVENT SHALL THE AGGREGATE LIABILITY OF BONHAMS AND ITS CONSIGNOR TO A PURCHASER EXCEED THE PURCHASE PRICE ACTUALLY PAID FOR A DISPUTED ITEM OF PROPERTY.

Seller's guide

SELLING AT AUCTION

Bonhams can help you every step of the way when you are ready to sell art, antiques and collectible items at auction. Our regional offices and representatives throughout the US are available to service all of your needs. Should you have any further questions, please visit our website at www.bonhams.com/us for more information or call our Client Services Department at +1 (323) 850 7500.

AUCTION ESTIMATES

The first step in the auction process is to determine the auction value of your property. Bonhams' world-renowned specialists will evaluate your special items at no charge and in complete confidence. You can obtain an auction estimate in many ways:

- Attend one of our Auction Evaluation Events held regularly at our galleries and in other major metropolitan areas. The updated schedule for Bonhams Auction Evaluation Events is available at www.bonhams.com/us.
- Call our Client Services Department to schedule a private appointment at one of our galleries. If you have a large collection, our specialists can travel, by appointment, to evaluate your property on site.
- Send clear photographs to us of each individual item, including item dimensions and other pertinent information with each picture. Photos should be sent to Bonhams' address in envelopes marked as "photo auction estimate". Alternatively, you can submit your request using our online form at www.bonhams.com/us. Digital images may be attached to the form. Please limit your images to no more than five (5) per item.

CONSIGNING YOUR PROPERTY

After you receive an estimate, you may consign your property to us for sale in the next appropriate auction. Our staff assists you throughout the process, arranging transportation of your items to our galleries (at the consignor's expense), providing a detailed inventory of your consignment, and reporting the prices realized for each lot. We provide secure storage for your property in our warehouses and all items are insured throughout the auction process. You will receive payment for your property approximately 35 days after completion of sale.

Sales commissions vary with the potential auction value of the property and the particular auction in which the property is offered. Please call us for commission rates.

PROFESSIONAL APPRAISAL SERVICES

Bonhams' specialists conduct insurance and fair market value appraisals for private collectors, corporations, museums, fiduciaries and government entities on a daily basis. Insurance appraisals, used for insurance purposes, reflect the cost of replacing property in today's retail market. Fair market value appraisals are used for estate, tax and family division purposes and reflect prices paid by a willing buyer to a willing seller.

When we conduct a private appraisal, our specialists will prepare a thorough inventory listing of all your appraised property by category. Valuations, complete descriptions and locations of items are included in the documentation.

Appraisal fees vary according to the nature of the collection, the amount of work involved, the travel distance, and whether the property is subsequently consigned for auction.

Our appraisers are available to help you anywhere and at any time. Please call our Client Services Department to schedule an appraisal.

ESTATE SERVICES

Since 1865, Bonhams has been serving the needs of fiduciaries – lawyers, trust officers, accountants and executors – in the disposition of large and small estates. Our services are specially designed to aid in the efficient appraisal and disposition of fine art, antiques, jewelry, and collectibles. We offer a full range of estate services, ranging from flexible financial terms to tailored accounting for heirs and their agents to world-class marketing and sales support.

For more information or to obtain a detailed Trust and Estates package, please visit our website at www.bonhams.com/us or contact our Client Services Department.

Buyer's guide

BUYING AND BIDDING AT AUCTION

Whether you are an experienced bidder or an enthusiastic novice, auctions provide a stimulating atmosphere unlike any other. Bonhams previews and sales are free and open to the public. As you will find in these directions, bidding and buying at auction is easy and exciting. Should you have any further questions, please visit our website at www.bonhams.com or call our Client Services Department at +1 (323) 850 7500.

Catalogs

Before each auction we publish illustrated catalogs. Our catalogs provide descriptions and estimated values for each "lot." A lot may refer to a single item or to a group of items auctioned together. The catalogs also include the dates and the times for the previews and auctions. We offer our catalogs by subscription or by single copy. For information on subscribing to our catalogs, you may refer to the subscription form in this catalog, call our Client Services Department, or visit our website at www.bonhams.com/us.

Previews

Auction previews are your chance to inspect each lot prior to the auction. We encourage you to look closely and examine each object on which you may want to bid so that you will know as much as possible about it. Except as expressly set forth in the Conditions of Sale, items are sold "as is" and with all faults; illustrations in our catalogs, website and other materials are provided for identification only. At the previews, our staff is always available to answer your questions and guide you through the auction process. Condition reports may be available upon request.

Estimates

Bonhams catalogs include low and high value estimates for each lot, exclusive of the buyer's premium and tax. The estimates are provided as an approximate guide to current market value based primarily on previous auction results for comparable pieces, and should not be interpreted as a representation or prediction of actual selling prices. They are determined well in advance of a sale and are subject to revision. Please contact us should you have any questions about value estimates.

Reserve

All lots in a catalog are subject to a reserve unless otherwise indicated. The reserve is the minimum price that the seller is willing to accept for a lot. This amount is confidential and does not exceed the low estimated value.

Auction House's Interest in Property Offered at Auction

On occasion, Bonhams may offer property in which it has an ownership interest in whole or in part or otherwise has an economic interest. Such property, if any, is identified in the catalog with a □ symbol next to the lot number(s). Bonhams may also offer property for a consignor that has been guaranteed a minimum price for its property by Bonhams or jointly by Bonhams and a third party. Bonhams and any third parties providing a guarantee may benefit financially if the guaranteed property is sold successfully and may incur a financial loss if its sale is not successful. Such property, if any, is identified in the catalog with a symbol next to the lot number(s).

Bidding at Auction

At Bonhams, you can bid in many ways: in person, via absentee bid, over the phone, or via Bonhams' live online bidding facility. Absentee bids can be submitted in person, online, or via email. Irrespective of previous bidding activity a valid Bonhams client account is required to participate in bidding activity. You will be required to provide government-issued proof of identity and residence, and if you are a company, your certificate of incorporation or equivalent documentation with your name and registered address, government issued proof of your current address, documentary proof of your beneficial owners and directors, and proof of authority to transact. By bidding at auction, whether in person or by agent, by absentee bid, telephone, online or other means, the buyer or bidder agrees to be bound by the Conditions of Sale. Lots are auctioned in consecutive numerical order as they appear in the catalog. Bidding normally begins below the low estimate. The auctioneer will accept bids from interested parties present in the saleroom, from telephone bidders, and from absentee bidders who have left written bids in advance of the sale. The auctioneer may also execute bids on behalf of the consignor up to the amount of the reserve, but never above it. We assume no responsibility for failure to execute bids for any reason whatsoever.

In Person

If you are planning to bid at auction for the first time, you will need to register at the reception desk in order to receive a numbered bid card. To place a bid, hold up your card so that the auctioneer can clearly see it. Decide on the maximum auction price that you wish to pay, exclusive of buyer's premium and tax, and continue bidding until your bid prevails or you reach your limit. If you are the successful bidder on a lot, the auctioneer will acknowledge your paddle number and bid amount.

Absentee Bids

As a service to those wishing to place bids, we may at our discretion accept bids without charge in advance of auction online or in writing on bidding forms available from us. "Buy" bids will not be accepted; all bids must state the highest bid price the bidder is willing to pay. Our auction staff will try to bid just as you would, with the goal of obtaining the item at the lowest bid price possible. In the event identical bids are submitted, the earliest bid submitted will take precedence. Absentee bids shall be executed in competition with other absentee bids, any applicable reserve, and bids from other auction participants. A friend or agent may place bids on your behalf, provided that we have received your written authorization prior to the sale. Absentee bid forms are available in our catalogs, online at www.bonhams.com/us, at offsite auction locations and at our Los Angeles, San Francisco and New York galleries.

By Telephone

We can arrange for you to bid by telephone. To arrange for a telephone bid, please contact our Client Services Department a minimum of 24 hours prior to the sale.

Online

We offer live online bidding for most auctions and accept absentee bids online for all our auctions. Please visit www.bonhams.com/us for details.

Bid Increments

Bonhams generally uses the following increment multiples as bidding progresses:	
\$50-200.....	by \$10s
\$200-500.....	by \$20/50/80s
\$500-1,000.....	by \$50s
\$1,000-2,000.....	by \$100s
\$2,000-5,000.....	by \$200/500/800s
\$5,000-10,000.....	by \$500s
\$10,000-20,000.....	by \$1,000s
\$20,000-50,000.....	by \$2,000/5,000/8,000s
\$50,000-100,000.....	by \$5,000s
\$100,000-200,000.....	by \$10,000s
above \$200,000.....	at auctioneer's discretion

The auctioneer may split or reject any bid at any time at his or her discretion as outlined in the Conditions of Sale.

Currency Converter

Solely for the convenience of bidders, a currency converter may be provided at Bonhams' auctions. The rates quoted for conversion of other currencies to U.S. Dollars are indications only and should not be relied upon by a bidder, and neither Bonhams nor its agents shall be responsible for any errors or omissions in the operation or accuracy of the currency converter.

Buyer's Premium

A buyer's premium is added to the winning bid price of each individual lot purchased, at the rates set forth in the Conditions of Sale. The winning bid price plus the premium constitute the purchase price for the lot. Applicable sales taxes are computed based on this figure, and the total becomes your final purchase price.

Unless specifically illustrated and noted, fine art frames are not included in the estimate or purchase price. Bonhams accepts no liability for damage or loss to frames during storage or shipment.

All sales are final and subject to the Conditions of Sale found in our catalogs, on our website, and available at the reception desk.

Payment

Payment may be made to Bonhams by cash, checks drawn on a U.S. bank, money order, wire transfer, or by Visa, MasterCard, American Express or Discover credit or charge card or debit card. All items must be paid for within 5 business days of the sale. Please note that payment by personal or business check may result in property not being released until purchase funds clear our bank. For payments sent by mail, please remit to Bonhams Client Services Department, 7601 W Sunset Boulevard, Los Angeles, California 90046.

Sales Tax

Residents of states listed in Paragraph 1 of the Conditions of Sale must pay applicable sales tax. Other state or local taxes (or compensation use taxes) may apply. Sales tax will be automatically added to the invoice unless a valid resale number has been furnished or the property is shipped via common carrier to destinations outside the states listed in the Conditions of Sale. If you wish to use your resale license please contact Client Services for our form.

Collection of Purchases

Scheduling an appointment and payment in full prior to arrival will facilitate the quick release of your property. If you are sending a third-party to collect, please provide details to our Client Services Department at invoices.us@bonhams.com prior to your scheduled pickup or we will be unable to release your property.

For your convenience, pre-allocated 30-minute collection time slots are available Monday through Friday between 9am – 4:30pm. To schedule collection of purchases, please contact our Client Services Department on +1 (323) 850 7500.

Shipping & Removal

Bonhams can accommodate shipping for certain items. If you wish to receive a Bonhams Shipping quote, please confirm as such at the time of registration. Carriers are not permitted to deliver to PO boxes.

International buyers are responsible for all import/export customs duties and taxes. An invoice stating the actual purchase price will accompany all international purchases.

Handling and Storage Charges

Storage charges of \$5 per lot, per day will begin accruing for any lots not collected within 14 calendar days of the auction.

Bonhams reserve the right to remove uncollected sold lots to the warehouse of our choice at the buyer's risk and expense. Further transfer, handling, storage and full value protection fees will apply if move to a warehouse of our choice.

Auction Registration Form

(Attendee / Absentee / Online / Telephone Bidding)

Please circle your bidding method above.

<input type="checkbox"/>	<input type="checkbox"/>	<input type="checkbox"/>	<input type="checkbox"/>
--------------------------	--------------------------	--------------------------	--------------------------

Paddle number (for office use only)

General Notice: This sale will be conducted in accordance with Bonhams Conditions of Sale, and your bidding and buying at the sale will be governed by such terms and conditions. Please read the Conditions of Sale in conjunction with the Buyer's Guide relating to this sale and other published notices and terms relating to bidding. Payment by personal or business check may result in your property not being released until purchase funds clear our bank. Checks must be drawn on a U.S. bank.

Notice to Absentee Bidders: In the table below, please provide details of the lots on which you wish to place bids at least 24 hours prior to the sale. Bids will be rounded down to the nearest increment. Please refer to the Buyer's Guide in the catalog for further information relating to instructions to Bonhams to execute absentee bids on your behalf. Bonhams will endeavor to execute bids on your behalf but will not be liable for any errors or non-executed bids.

Notice to First Time Bidders: New clients are requested to provide photographic proof of ID - passport, driving license, ID card, together with proof of address - utility bill, bank or credit card statement etc. Corporate clients should also provide a copy of their articles of association / company registration documents, together with a letter authorizing the individual to bid on the company's behalf. Failure to provide this may result in your bids not being processed. For higher value lots you may also be asked to provide a bankers reference.

Notice to online bidders: If you have forgotten your username and password for www.bonhams.com, please contact Client Services.

If successful

I will collect the purchases myself ☐
Please contact me with a shipping quote (if applicable) ☐
I will arrange a third party to collect my purchase(s) ☐

Please email the completed Registration Form and requested information to:

Bonhams Client Services Department
7601 W. Sunset Blvd
Los Angeles, California 90046
Tel +1 (323) 850 7500
bids.us@bonhams.com

Bonhams

Sale title: California and Western Art	Sale date: December 2, 2020
Sale no. 26621	Sale venue: Online auction
General Bid Increments: \$10 - 200by 10s \$200 - 500by 20 / 50 / 80s \$500 - 1,000by 50s \$1,000 - 2,000by 100s \$2,000 - 5,000by 200 / 500 / 800s \$5,000 - 10,000by 500s \$10,000 - 20,000by 1,000s \$20,000 - 50,000by 2,000 / 5,000 / 8,000s \$50,000 - 100,000by 5,000s \$100,000 - 200,000by 10,000s above \$200,000at the auctioneer's discretion The auctioneer has discretion to split any bid at any time.	
Customer Number	Title
First Name	Last Name
Company name (to be invoiced if applicable)	
Address	
City	County / State
Post / Zip code	Country
Telephone mobile	Telephone daytime
Telephone evening	
Telephone bidders: indicate primary and secondary contact numbers by writing ① or ② next to the telephone number.	
E-mail (in capitals) _____ By providing your email address above, you authorize Bonhams to send you marketing materials and news concerning Bonhams and partner organizations. Bonhams does not sell or trade email addresses.	
I am registering to bid as a private client <input type="checkbox"/>	I am registering to bid as a trade client <input type="checkbox"/>
Resale: please enter your resale license number here _____ We may contact you for additional information.	

SHIPPING	
Shipping Address (if different than above):	
Address: _____	Country: _____
City: _____	Post/ZIP code: _____

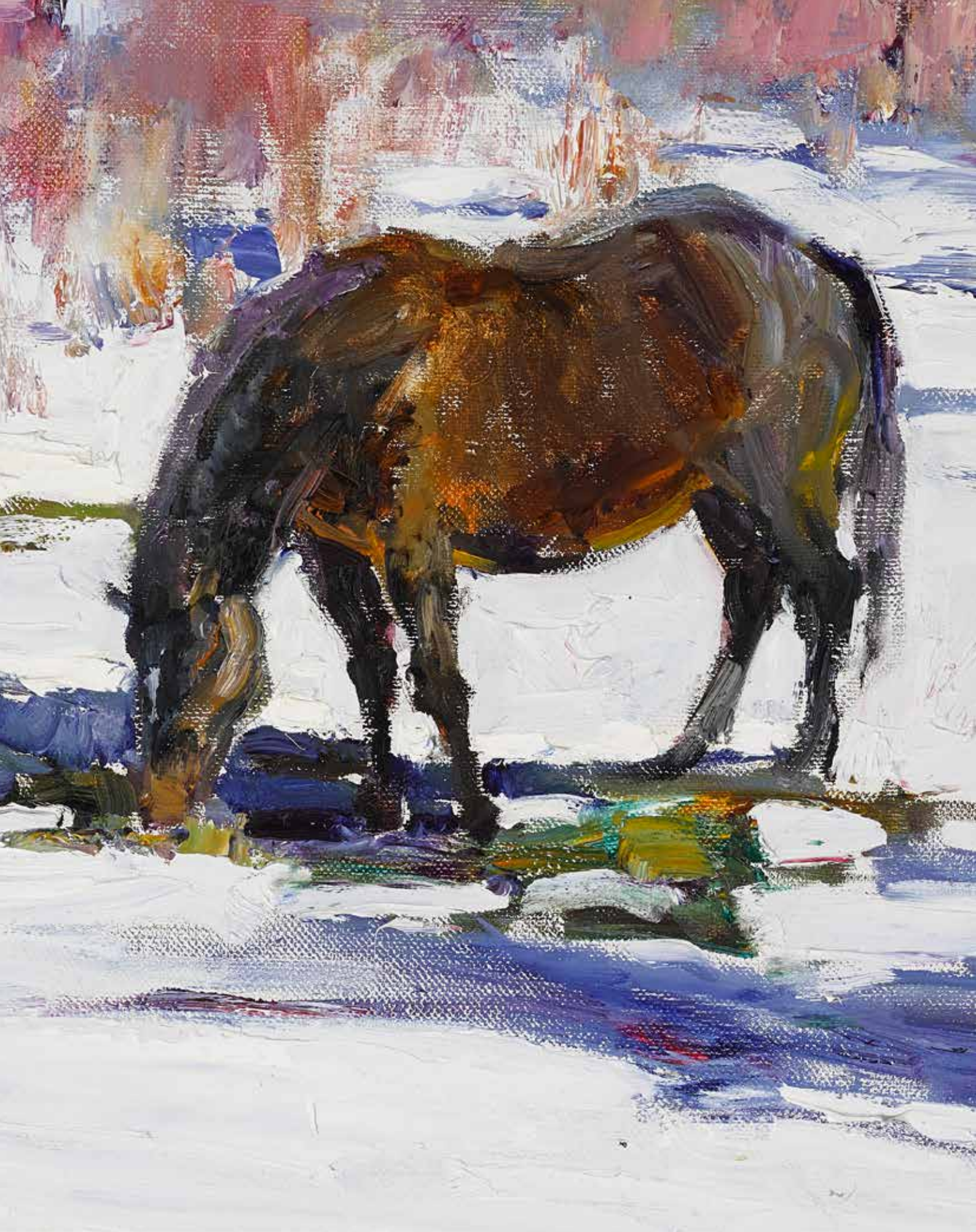
Please note that all telephone calls are recorded.

Type of bid (A-Absentee, T-Telephone)	Lot no.	Brief description (In the event of any discrepancy, lot number and not lot description will govern.) If you are bidding online there is no need to complete this section.	MAX bid in US\$ (excluding premium and applicable tax) Emergency bid for telephone bidders only*

You instruct us to execute each absentee bid up to the corresponding bid amount indicated above.

* Emergency Bid: A maximum bid (exclusive of Buyer's Premium and tax) to be executed by Bonhams only if we are unable to contact you by telephone or should the connection be lost during bidding.

BY SIGNING THIS FORM YOU AGREE THAT YOU HAVE READ AND UNDERSTAND OUR CONDITIONS OF SALE AND SHALL BE LEGALLY BOUND BY THEM, AND YOU AGREE TO PAY THE BUYER'S PREMIUM, ANY APPLICABLE TAXES, AND ANY OTHER CHARGES MENTIONED IN THE BUYER'S GUIDE OR CONDITIONS OF SALE. THIS AFFECTS YOUR LEGAL RIGHTS.	
Your signature:	Date:





Bonhams

601 California Street, Suite 150
San Francisco, California 94108

7601 W. Sunset Boulevard
Los Angeles, California 90046

+1 323 850 7500
bonhams.com

AUCTIONEERS SINCE 1793