

# Bonhams



## Edinburgh Jewels

Edinburgh | 25 June 2020



# Edinburgh Jewels

22 Queen Street, Edinburgh | Thursday 25 June 2020 at 11am

## BONHAMS

22 Queen Street  
Edinburgh EH2 1JX  
+44 (0) 131 225 2266  
[www.bonhams.com/edinburgh](http://www.bonhams.com/edinburgh)

## VIEWING

BY APPOINTMENT ONLY  
Please contact the department.

## BIDS

+44 (0) 20 7447 7447  
To bid via the internet please  
visit [bonhams.com](http://bonhams.com)

Please provide details of the lots  
on which you wish to place bids  
at least 24 hours prior to the  
sale.

Please note telephone bids can  
only be accepted on lots with a  
lower estimate in excess of £500

Please note items will be kept  
at Edinburgh until shipment  
instructions have been given. This  
is at the customer's own cost.

New bidders must also provide  
proof of identity when submitting  
bids. Failure to do this may  
result in your bids not being  
processed.

## ENQUIRIES

**Jewellery**  
Head of Department  
Nathalie Jordan MA MLitt FGA  
(maternity leave)

Specialist  
Emma McMillan MA(Hons) MPhil  
FGA DGA  
+44 (0) 131 240 0915  
[emma.mcmillan@bonhams.com](mailto:emma.mcmillan@bonhams.com)

Cataloguer  
Rebecca Bohle  
+44 (0) 131 240 2298  
[rebecca.bohle@bonhams.com](mailto:rebecca.bohle@bonhams.com)

## SALE NUMBER

26038

## CUSTOMER SERVICES

Monday to Friday 9am to 5pm  
+44 (0) 20 7447 7447

## ILLUSTRATIONS

Front cover: Lot 63  
Inside front cover: Lot 162  
Divider: Lot 158  
Inside back cover: Lot 151  
Back cover: Lot 150

## REGISTRATION IMPORTANT NOTICE

Please note that all customers,  
irrespective of any previous  
activity with Bonhams, are  
required to complete the Bidder  
Registration Form in advance  
of the sale. The form can be  
found at the back of every  
catalogue and on our website at  
[www.bonhams.com](http://www.bonhams.com) and should  
be returned by email or post to  
the specialist department or  
to the bids department at  
[bids@bonhams.com](mailto:bids@bonhams.com)

To bid live online and / or leave  
internet bids please go to  
[www.bonhams.com/  
auctions/26038](http://www.bonhams.com/auctions/26038) and click on  
the Register to bid link at the  
top left of the page.

## Watches

Important Notice Regarding  
Importation into the United  
States of Corum, Franck  
Muller, Piaget and Rolex  
watches. Bonhams cannot  
arrange for the delivery of  
Corum, Franck Muller, Piaget,  
Tudor and Rolex watches  
into The United States. The  
buyer or designated agent  
may collect the property in  
the country of sale. Please  
also note that in some  
circumstances we are unable  
to ship the watch with its  
strap due to certain import  
restrictions.

Please note that irrespective  
of origin, jadeite and rubies  
(and any jewellery pieces  
that contain them) may now  
be imported into the United  
States.

## IMPORTANT INFORMATION

The United States Government  
has banned the import of ivory  
into the USA. Lots containing  
ivory are indicated by the  
symbol  $\Phi$  printed beside the  
lot number in this catalogue.

## Bonhams 1793 Limited

Registered No. 4326560  
Registered Office: Montpellier Galleries  
Montpelier Street, London SW7 1HH

+44 (0) 20 7393 3900  
+44 (0) 20 7393 3905 fax

# Sale Information

---

**Edinburgh Salerooms**

22 Queen Street, EH2 1JX  
+44 (0) 131 225 2266

**Glasgow Office**

Kirkhill House, Broom Road East  
Newton Mearns  
Glasgow G77 5LL  
+44 (0) 141 223 8866

**London**

101 New Bond Street, W1S 1SR  
+44 (0) 20 7447 7447  
+44 (0) 20 7447 7400 fax

**Managing Director**

Charles Graham-Campbell

**Chairman Scotland**

Ray Entwistle

**Valuations, Trusts & Estates**

Charles Graham-Campbell  
Grant MacDougall  
Gordon McFarlan  
Belinda Treble  
Amanda Dovesi  
Hamish Wilson

**The Scottish Sale**

Chris Brickley

**Pictures**

Chris Brickley  
May Matthews  
Charlotte Canby  
Chris Dawson (London)

**Jewellery**

Nathalie Jordan (maternity leave)  
Emma McMillan  
Rebecca Bohle

**Silver**

Fiona Hamilton  
Gordon McFarlan

**Asian Art**

Ian Glennie

**European Ceramics & Glass**

Katherine Wright

**Arms & Armour**

Kenneth Naples

**Furniture, Clocks, Rugs,  
Carpets, Works of Art &  
Scientific Instruments**

Kenneth Naples  
Charlotte Canby

**Whisky**

Martin Green  
Georgia Porteous  
Charles MacLean (consultant)

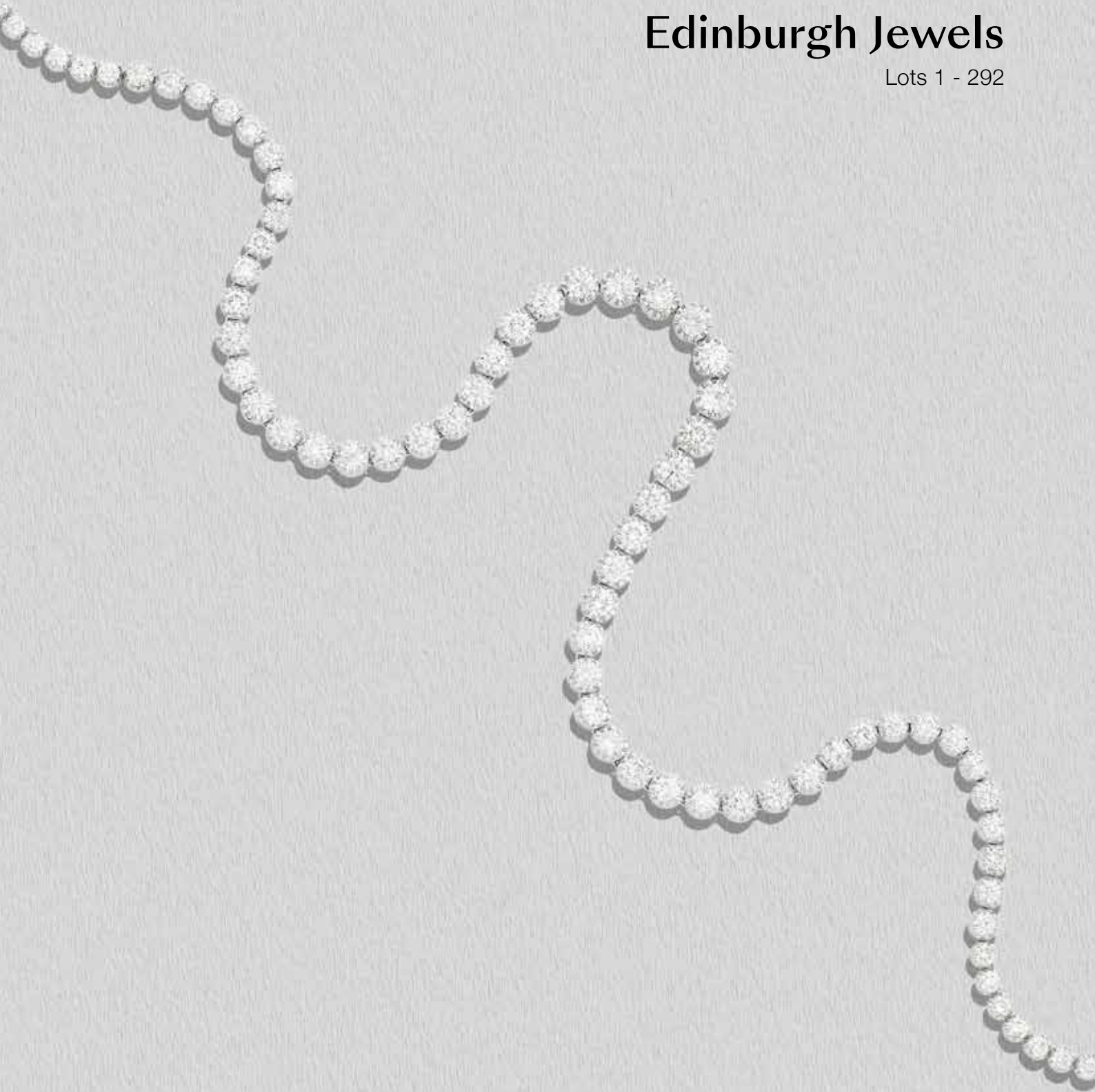
**The Sporting Sale**

Hamish Wilson  
Charlotte Canby

---

# Edinburgh Jewels

Lots 1 - 292



1Y

**A CORAL 'CORALLIUM RUBRUM' SNAKE BANGLE**

Modelled realistically and articulated with removable hinged collar, *length approximately 31cm, stamped '750'*

**£800 - 1,200**

This lot will be subject to USA Fish and Wildlife regulations if imported into the USA.

2

**A BLUE JOHN AND DIAMOND RIVIÈRE NECKLACE, CIRCA 1800**

Composed of rubover-set slim oval cabochon-cut Blue John panels, the ten largest panels each within a border of heavy collet and claw-set small rose-cut diamonds, with concealed push-in clasp, *length approximately 51cm, stamped with Continental control marks*

**£800 - 1,200**

3

**A CARNELIAN INTAGLIO SIGNET RING, FORMERLY BELONGING TO PRINCE STANISLAS PONIATOWSKI**

Rubover-set with a large oval carnelian intaglio, carved to depict the Vestal Virgin Claudia Quinta dragging the goddess Cybele's ship in to Rome, inscribed in reverse to the lower edge 'S.NASICA', with reeded borders to the sides, the swivelling ring front flanked by scroll pierced shoulders, to a reeded shank, *size L½, carnelian measuring approximately 25.6 x 19.4mm*

**£200 - 300**

Prince Stanislas Poniatowski (1754-1833), nephew of the last King of Poland, went into affluent exile in 1791. He was a passionate collector of antiquities and commissioned an extraordinary series of 2,500 intaglios, encouraging the belief that the gems were ancient engravings. The group of contemporary gem-engravers who produced them in Rome signed them with known or invented signatures. In 1830, Poniatowski published a catalogue of his gems before releasing two further versions containing more elaborate descriptions in 1833. When his collection was offered for sale by Christie's in London after his death, connoisseurs and potential buyers were outraged to discover that the gems were 'modern' and the sale was largely derided. All of the gems have since been widely dispersed. Today, they are appreciated in their own right as fine examples of neo-classical gem-engraving. The style of this intaglio is thought to be that of Giovanni Calandrelli and the gem depicts an event thought to have taken place in 204 B.C., the year of Scipio Nausica's consulship. Rome was engaged in the final years of the Second Punic War against Carthage and, afraid of prophecies foretelling defeat in this campaign and a failed harvest, the city decided to bring a sacred statue of the goddess Cybele from her shrine in Greek Asia Minor. When the ship carrying the goddesses' image became stuck in the River Tiber, Claudia prayed for the goddess's help, and was able to release and tow the ship into the city single-handed. With the goddess as protector, Rome finally defeated Hannibal, and a good harvest was secured.

**Provenance**

Prince Stanislas Poniatowski (1754-1833) collection; sold at Christie's, London, upon his death (29 April-21 May).  
Beazley Archive gem database no. 1839-1483.

**Literature**

Poniatowski, S., *Catalogue des pierres graves antiques de S.A. le Prince Stanislas Poniatowski*, 1830-1833: IX.1.61.

Prendeville, J., *Explanatory catalogue of the proof-impressions of the antique gems possessed by the late Prince Poniatowski and now in the possession of John Tyrrell, Esq, H. Graves for the proprietor*, London, 1841.

4

**A DIAMOND CLUSTER RING, LATE GEORGIAN**

With central claw and rubover-set old round brilliant-cut diamond, *estimated weight approximately 0.65ct*; within a surround of similarly-cut diamonds, with triple-split shoulders and fluted band, *size O, estimated total diamond weight approximately 0.77ct*

**£500 - 700**

5

**A LABRADORITE CAMEO STICKPIN**

The labradorite oval cameo carved to depict the profile of a classical bearded man, set within a beaded mount, *width approximately 26mm, overall length including stickpin 92mm*

**£500 - 700**

6

**A CAMEO DEMI-PARURE SUITE**

Comprising: a brooch set with a circular cameo depicting a female bust, within a frame of ropework design, *diameter approximately 45mm*; and a pair of earrings of similar design, *diameter approximately 23mm, later hoop fittings, accompanied by fitted case (2)*

**£600 - 800**

7

**A HARDSTONE MICRO MOSAIC BROOCH/PENDANT, WITH CHAIN, 19TH CENTURY**

The central oval plaque depicting the Doves of Pliny, within a border of half-pearls, and outer scrolling border, with glazed panel to the reverse and detachable pearl-set bale, all suspended from a fine curb-link chain, *pendant approximately 74.5 x 57.5mm, stamped with a French gold control mark, chain length approximately 52cm, stamped '15CT', pearls untested (2)*

**£400 - 600**

8

**A PAIR OF SEED-PEARL PENDENT EARRINGS, MID 19TH CENTURY**

Of foliate design, set throughout with seed-pearls, *length approximately 10cm, seed-pearls untested*

**£700 - 900**

9

**A CULTURED PEARL AND GARNET THREE-ROW NECKLACE AND A SINGLE-ROW NECKLACE**

Designed as three rows of fairly uniform cultured pearls, *approximate diameters 7 - 7.5mm*, individually knotted, to an oval-cut garnet-set clasp, framed by smaller cultured pearls, *length of shortest row approximately 36.5cm, stamped '375', British hallmarks*; together with a single-row necklace, composed of fairly uniform cultured pearls, *approximate diameters 8 - 8.5mm*, individually knotted, *length approximately 94cm, with fitted case, cultured pearls untested (2)*

**£600 - 800**

10

**A GARNET PENDANT BROOCH, VICTORIAN**

Suspending an oval garnet cabochon within an open scroll and foliate border, to a similar surmount, *length approximately 63mm*

**£300 - 500**





1

2

3

4

5



11

11

#### A COLLECTION OF AMETHYST JEWELLERY

Comprising: a bracelet of ropework design set with oval-cut amethysts between connecting chain links, *length approximately 16.5cm*; a pendant set with an oval-cut amethyst and seed-pearls to a chain; and a brooch set with an octagonal-cut amethyst, *measuring approximately 20.0 x 16.0 x 9.5mm*, in a pinched collet setting, *seed-pearls untested* (3)

£400 - 600

12

#### A CHRYSOBERYL AND RUBY DEMI-PARURE, CIRCA 1840

Comprising: a girandole design brooch/pendant, set with pear and oval-cut chrysoberyls and graduated circular-cut rubies, also with foliate and bead decoration, with detachable hinged pin and revolver clasp fittings and additional hinged suspension hoop, *measuring approximately 8.0 x 4.0mm*; together with a pair of matching pendent earrings, *length approximately 5mm*, with *later post and butterfly fittings* (2)

£1,000 - 1,500

13

#### A FANCY-LINK BRACELET

Designed as a line of textured open-work spheres, *length approximately 16cm*, *weight approximately 25 grams*

£250 - 300

14

#### A CAT'S EYE CHRYSOBERYL AND DIAMOND CLUSTER RING

Claw-set with a cabochon-cut cat's eye chrysoberyl, *measuring approximately 7.8 x 7.6 x 4.3mm*, framed by old round brilliant-cut diamonds, to a plain hoop, *size H*, *estimated total diamond weight approximately 0.60ct*, *one diamond deficient*

£500 - 700

15

#### A COLLECTION OF FIVE RINGS

Comprising: a dress ring rubover-set with oval-cut sapphires, with pairs of old round brilliant-cut diamonds between, to a plain hoop, *size R*; a five-stone ring, claw-set with graduated oval-cut sapphires, to a plain hoop, *size L½*; a memorial ring; a pearl set ring; and another gem-set ring, *pearls untested* (5)

£300 - 500



12

16

#### TWO BROOCHES AND A BRACELET WITH LOCKET, MID-19TH CENTURY

Comprising: a bar brooch, applied to the centre with a cultured half-pearl-set horseshoe motif, also set with diamonds, to a blue enamelled ground; a seed-pearl and blue enamelled triple tassel brooch; and a snake-link bracelet, suspending a seed-pearl and blue enamelled locket, *gross weight approximately 65 grams*, *all pearls untested* (3)

£600 - 800

17

#### A DIAMOND KNOT BROOCH AND A MONKEY BROOCH

Designed as a lover's knot set with old round brilliant-cut diamonds, *width approximately 22mm*, *estimated total diamond weight approximately 0.95ct*; and a brooch depicting the 'three wise monkeys' seated on a branch, *width approximately 37mm*, *stamped '375'*, with *British hallmarks*, *maker's mark 'A&W'* (2)

£400 - 600

18 Ω

#### AN ENAMEL BANGLE, A BRACELET AND A FOB CHAIN

The foliate engraved hinged bangle with three shaped enamel panels to the front with classical decoration in powder-blue, white and ochre enamel, *inner circumference approximately 17cm*; a bracelet of ropework design, *length approximately 19cm*, *stamped '750'*; also a fob chain, *unstamped*, *gross weight approximately 96 grams* (3)

£500 - 700





19

19

**AN OVAL SHELL CAMEO BROOCH, LATE VICTORIAN**

Carved to depict a bacchanal in a landscape setting, the frame applied with engraved scrolls, *dimensions approximately 60 x 51.8mm, stamped '18'*

£500 - 700



20

**TWO OVAL SHELL CAMEO BROOCHES, LATE 19TH CENTURY**

Comprising: an example depicting veiled Nyx (Night), with closed eyes, poppies in her hair and a bat with out-stretched wings, with cannetille decorated frame and glazed back, *dimensions approximately 65.2 x 54.4mm*; also another example, carved with a Classical male portrait profile, with similarly decorated and glazed frame, *dimensions approximately 53.6 x 45.4mm (2)*

£600 - 800

21

**AN OVAL SHELL CAMEO BROOCH AND AN UNMOUNTED SHELL CAMEO**

The brooch carved to depict a bacchanal in a landscape setting, with plain polished mount, *dimensions approximately 70.5 x 55.5mm*, cameo signed indistinctly to reverse; also another oval shell cameo, carved with a Classical male portrait profile, wearing a laurel wreath, *dimensions approximately 72.8 x 59.2mm (2)*

£400 - 600

22

**A SEED-PEARL PENDANT, NECKLACE AND RING**

The oval pendant displaying a miniature of a boy and girl, framed by seed-pearls, with bird surmount, similarly set, *length approximately 50mm*; a necklace designed as a graduated row of pearls, from 1.5 - 4.5mm, *length approximately 44cm*; and a ring, designed as graduated row of half-pearls, size M; some pearls deficient, all pearls untested, brooch in fitted case (3)

£300 - 500

23

**A PAIR OF CULTURED PEARL AND DIAMOND CLUSTER EAR STUDS**

Each central cultured pearl framed with collet-set single-cut diamonds, with post fittings, *width approximately 10mm, estimated total diamond weight approximately 0.45ct, cultured pearls untested*

£500 - 800

For details of the charges payable in addition to the final Hammer Price of each Lot please refer to paragraphs 7 & 8 of the Notice to Bidders at the back of the catalogue.

21



20

24

**A CITRINE AND SEED-PEARL BROOCH**

The oval-cut citrine, measuring approximately 27.0 x 20.0 x 13.6mm, framed by seed-pearls, width approximately 32mm, seed-pearls untested

£300 - 500

25

**A COLLECTION OF ITEMS**

Comprising: a fancy double curb link bracelet, with beaded edges, push-in clasp and safety chain, stamped '9', gross weight 14.5 grams; a cabochon-cut turquoise and rose-cut diamond set circular brooch, with glazed aperture to the reverse, approximate diameter 27.7mm; another brooch, with central rubover-set heart-cut citrine, within a border of half-pearls, approximate measurements length 21.8mm, width 20.7mm, pearls untested; a 22ct gold oval green intaglio set ring, size Q, British hallmarked; together with another three assorted gem set rings (7)

£400 - 500

26

**A COLLECTION OF ITEMS, MOSTLY BROOCHES AND GENTLEMAN'S JEWELLERY**

Comprising: a shaped-rectangular yellow metal brooch, inset with five oval green gem intaglios; a rose-cut diamond and cultured pearl-set arrow-form brooch; six other various brooches; a pair of British hallmarked 18ct gold cufflinks, with monogrammed oval terminals; two cased sets of dress studs; and other items, pearls untested (16)

£300 - 500

27

**A PAIR OF PIETRE-DURE EARRINGS, CIRCA 1870**

Each hardstone mosaic floral spray within a ropetwist and scrollwork surround, suspending drop-shaped terminals with applied wirework decoration, to a similarly designed surmount, *length approximately 61mm*

**£600 - 900**

28

**A GEM-SET PENDANT AND PENDENT EARRING DEMI-PARURE, CIRCA 1840**

Of ornate repoussé and double-sided form, featuring a seated lady within a scrolling acanthus leaf surround, accented by circular green hardstone cabochons; the pendent earrings en suite, pendant with one later hardstone replacement and a later curb-link chain, *pendant length approximately 50mm, chain length approximately 44cm, earring length approximately 80mm, earrings with later post fittings (2)*

**£1,000 - 1,500**

29

**A GEM-SET PENDANT NECKLACE, NEO-RENAISSANCE**

The openwork plaque of scrollwork design, decorated with white and black enamel, pearls, circular-cut rubies and rose-cut diamonds, suspending a baroque pearl, *measuring approximately 11mm, between two garnet drops, mounted in gold, to a later unassociated strand of cultured pearls, diameters approximately 7mm, lengths approximately: pendant 52mm, necklace 43cm, pearls untested, pendant with later brooch fitting*

**£1,000 - 1,500**

30

**A GARNET BRACELET, 19TH CENTURY**

Of open scrolling and foliate form, collet-set with alternating circular and rectangular-cut garnets, to an articulated strap, *length approximately 17.5cm*

**£700 - 900**

31

**A PAIR OF SEED-PEARL AND PASTE PENDANT EARRINGS, FIRST HALF OF 19TH CENTURY**

Each of scrollwork design, set throughout with seed-pearls, accented by oval-cut red pastes, *indistinct mark, length approximately 75mm, seed-pearls untested*

**£500 - 700**

32

**A COLLECTION OF CULTURED PEARL JEWELLERY, MODERN**

Comprising: eight assorted necklaces, and a pair of earstuds, *cultured pearls untested (9)*

**£400 - 600**

33 Y

**A PAIR OF CORAL 'CORALLIUM RUBRUM' PENDENT EARRINGS, CIRCA 1840, AND A SHELL AND CULTURED PEARL CHOKER**

Earrings: each drop with engraved acanthus leaf and scrolling repoussé detail, centrally-set with an oval coral *corallium rubrum* cameo depicting a classical bust; necklace: set to the front with a late 19th century shell cameo depicting the winged head of a man, within a later scrolling floral and foliate surround, between three strands of cultured freshwater pearls, to a rectangular clasp with bead and ropetwist detail; *lengths approximately: earrings 48mm, choker 35.5cm (2)*

**£500 - 700**

This lot will be subject to US Fish and Wildlife regulations if imported into the USA.

34 Y

**A CORAL 'CORALLIUM RUBRUM' PENDANT**

The carved coral depicting a cherub carrying a festoon of flowers amid classical style swags, *length approximately 73mm*

**£400 - 600**

This lot will be subject to USA Fish and Wildlife regulations if imported into the USA.

35

**FOUR OVAL SHELL CAMEO BROOCHES**

Comprising: a large example depicting Hope with an anchor, to a circular pierced frame; another carved with Hebe serving nectar to Zeus disguised as an eagle, framed by scrolls; another depicting Psyche with a butterfly, to a plain polished frame applied with foliate scrolls; and another depicting Day and Night, framed by engraved scrolls (4)

**£400 - 600**

Accompanied by label stating the 'Allegory of Hope' cameo was purchased from Harrods and tested as 15 carat gold.

36

**AN ONYX CAMEO BROOCH, VICTORIAN**

Of circular design, the onyx cameo carved with a classical female portrait profile, within a broad bezel and ropetwisted borders, *approximate diameter 38mm, gross weight approximately 18 grams*

**£500 - 700**

37

**FOUR PAIRS OF EARRINGS**

Comprising: a pair of pendent earrings, with oval cluster drop, set with turquoise cabochons and seed-pearls, *length approximately 27mm, stamped '15'*; a pair of pendent earrings, with graduated open circular drops and wire fittings, *length approximately 31mm*; a pair of tapering cylindrical drop earrings, with cannetille decoration and wire fittings, *length approximately 37.2mm*; and a pair of domed and tapering curved stud earrings, post and butterfly fittings, *measuring approximately 19.4 x 13.0mm; seed-pearls untested (4)*

**£500 - 700**

38

**A DIAMOND FLORAL CLUSTER BAR BROOCH**

Set with old round brilliant-cut diamonds, to a knife-bar, *width approximately 45mm, estimated total diamond weight approximately 2.50cts*

**£1,000 - 1,500**



29



28



27



30



31





39

**39  
A SEED-PEARL AND TURQUOISE BROOCH/PENDANT AND  
PENDENT EARRING PARURE, LATE 19TH CENTURY**

The tiered plaque with bicoloured foliate and floral decoration, scrolling detail and an applied turquoise and seed pearl fleur-de-lys, terminating with a bicoloured drop and hoop, the reverse with a glazed compartment, the pendent earrings en suite, *detachable pendant fitting, earrings with later post fittings, lengths approximately: brooch/pendant 76mm, earrings 53mm* (2)

**£700 - 900**

**40  
AN AMETHYST AND DIAMOND PENDANT AND CHAIN**

The pendant with central claw-set oval-cut amethyst, *measuring approximately 26.2 x 22.1 x 15.7mm*, within an illusion-set border of round brilliant-cut diamonds, *length approximately 37.5mm, width 26.40mm, stamped '18CT', estimated total diamond weight approximately 1.00ct*, suspended from a 9ct gold belcher-link chain, *length approximately 62cm, British hallmarks* (2)

**£800 - 1,200**

**41  
A PAIR OF ENAMEL PENDENT EARRINGS, CIRCA 1840**

Each cluster of turquoise enamel 'cabochons' suspending a link of similar design and three lozenge-shaped drops, decorated in turquoise enamel with floral and foliate detail highlighted in white enamel, the reverse similarly-decorated with black and white enamel, some enamel losses, *length approximately 70mm*

**£800 - 1,200**



40



41

**42  
AN AUSTRO-HUNGARIAN PENDANT AND A BRACELET**

The enamelled cruciform pendant set with square-cut, rectangular-cut and triangular-cut emeralds and ovoid pearls, *length approximately 71mm*; the 9ct gold bracelet claw-set with oval-cut amethysts and cultured pearls, *length approximately 19cm, stamped '9CT' to clasp, all pearls untested* (2)

**£400 - 600**

**43  
AN AUSTRO-HUNGARIAN EMERALD AND CULTURED PEARL  
BROOCH**

Of cruciform set with rectangular-cut and square-cut emeralds within a foliate and scroll mount embellished with four cultured pearls, *width approximately 6.2cm, pearls untested*

**£400 - 600**

**44  
AN EMERALD AND SEED-PEARL STAR BROOCH**

Set with square-cut emeralds, seed-pearls and rose-cut diamonds, *width approximately 30mm, some diamonds deficient, seed-pearls untested*

**£300 - 500**

**45  
A FILIGREE AND HARDSTONE PANEL SET NECKLACE**

The fringed front with alternating millegrain rubover-set lozenge-shaped polished hardstone panels, including bloodstone and moss agate, and shaped oval filigree panels, with later smaller foliate scroll-form links to the reverse section and bolt-ring clasp, *length approximately 42cm, clasp stamped indistinctly, gross weight approximately 30 grams*

**£400 - 600**

**46  
AN OPAL AND DIAMOND PLAQUE RING, EDWARDIAN**

With central oval cabochon-cut opal, surrounded by old brilliant-cut and single-cut diamonds, to a plain hoop with ornate shoulders, *size O½, estimated total diamond weight approximately 0.48ct, stamped '18', British hallmarks, case stamped 'P S Phillips & Co Ltd, Hull'*

**£300 - 400**

For details of the charges payable in addition to the final Hammer Price of each Lot please refer to paragraphs 7 & 8 of the Notice to Bidders at the back of the catalogue.



47

47

**A PAIR OF GOLD PENDENT EARRINGS, CIRCA 1870**

Each surmount with an applied floral and ropetwist detail, suspending a conical ropetwist drop, *some losses, length approximately 70mm*

**£600 - 900**

48

**A MOSS AGATE MEMORIAL BRACELET, LATE GEORGIAN**

Composed of graduated rubover-set circular cabochon-cut moss agates, with central larger oval cabochon-cut moss agate, within an ouroboros border, with concealed clasp and safety chain, *length approximately 18.4cm, the reverse engraved with 'S H Wollaston died 11 June 1810'*

**£500 - 800**

49

**A MICRO MOSAIC OVAL BROOCH**

Depicting a King Charles spaniel within a landscaped setting, framed in a plain mount, *width approximately 50mm, stamped '750', British hallmarks*

**£700 - 900**

50

**A SHELL CAMEO BROOCH AND TWO GEM-SET BROOCHES, VICTORIAN**

The oval cameo depicting the profile of a classical lady within a swivel and ornate mount, *width approximately 50mm*; an oval agate-set brooch, *width approximately 50mm* and a diamond and seed-pearl circular brooch, *width approximately 36mm, estimated total diamond weight approximately 0.30ct, seed-pearls untested (3)*

**£600 - 800**



49



48

51

**A DIAMOND AND PEARL HEART PENDANT AND A LONGCHAIN**

The pendant with central pearl framed by a double row of old brilliant-cut diamonds, to a surmount embellished with three rose-cut diamonds, *length overall approximately 21mm*; and a longchain of fine belcher form, interspersed with cultured pearls, *length approximately 152cm, pearls untested (2)*

**£500 - 700**

52

**A FIVE-STONE DIAMOND RING AND THREE BROOCHES**

The ring set with old round brilliant-cut diamonds, to a plain hoop, *size N, estimated total diamond weight approximately 0.45ct*; an oval open brooch with seed-pearls; a turquoise and seed-pearl brooch; and another brooch, *pearls untested (3)*

**£300 - 400**

53

**A PAIR OF CAMEO PENDENT EARRINGS, EARLY 19TH CENTURY**

Each of openwork design with engraved foliate detail, set with an oval shell cameo, *indistinct maker's marks and assay marks, length approximately 80mm*

**£600 - 900**

54

**A COLLECTION OF JEWELLERY**

Comprising: a gem-set bangle, *stamped '375' and maker's mark T&G*; a gem-set ring, *stamped '375'*; a stylised brooch with a circular-cut paste accent, *stamped '9ct'*; an engraved locket, *unmarked*; a wedding band, *stamped '18'*; and a bracelet with engraved plate, *unmarked (6)*

**£400 - 600**





55

55

#### **A PAIR OF PENDENT EARRINGS AND TWO PAIRS OF EARLY-MID 19TH CENTURY EARRINGS**

1st: each of textured bicoloured design with floral and foliate detail, collet-set with rose-cut diamonds, terminating with a similarly-set detachable drop, 2nd: each textured cartouche with floral, foliate, ropetwist and star detail, accented by imitation seed-pearls of gold and silver tint, suspending a similarly-set fringe, mounted in bicoloured metal, 3rd: each designed as the head of a Moor, decorated with polychrome enamel, with engraved foliate detail, 1st: 19th century composites, 3rd: with enamel loss, lengths approximately: 1st 82mm, 2nd 70mm, 3rd 19mm (3)

£1,000 - 1,500

56

#### **A DIAMOND PLAQUE RING**

Collet-set with marquise rose-cut diamonds and framed by circular rose-cut diamonds, to a plain hoop, size J, plaque length approximately 30mm, one rose-cut diamond deficient and one replaced with colourless stone

£400 - 600

57

#### **A GARNET BROOCH AND BRACELET**

The brooch: of floral design with vari-cut garnets in a closed-back setting, length approximately 61mm; the bracelet, of fancy-link design set with oval-cut garnets throughout, length approximately 17cm (2)

£400 - 600

58

#### **FOUR OVAL SHELL CAMEO BROOCHES**

Comprising: an example carved to depict an angel, with clasped hands, to a plain polished frame applied with scrolls; together with three examples, each depicting classical female portrait profiles, one with glazed back (4)

£400 - 600



59

#### **A COLLECTION OF JEWELLERY**

Comprising: a diamond ring, claw-set with three graduated old round brilliant-cut diamonds, with pairs of rose-cut diamonds between, with scroll-pierced gallery and plain hoop, size M½, estimated total diamond weight approximately 0.70-0.75ct; an amethyst and seed pearl oval cluster ring, size L; a canted rectangular-cut jadeite signet ring, size O; a small oval signet ring, size H; a faceted band, size N, stamped 'PLAT'; and a graduated three-row simulated pearl necklace, with colourless paste set clasp, shortest length approximately 39cm, all pearls untested, jadeite has not been tested for natural colour origin or treatment (6)

£600 - 700

60

#### **AN AMETHYST AND DIAMOND CLUSTER RING, MODERN**

Claw-set with a circular-cut amethyst, within a surround of fourteen single-cut diamonds, with split shoulders to a plain hoop, size M, British hallmarked 18ct, estimated total diamond weight approximately 0.14ct

£300 - 500

61 Y

#### **A COLLECTION OF JEWELLERY**

Comprising: an off-set square-shaped Shakudo brooch; a silver multi-gem set brooch, designed as a coach and horses, opening to reveal a watch, signed 'EMKA'; another five assorted brooches; two amber-coloured bead necklaces; a coral 'corallium rubrum' bead necklace; an Eastern white metal buckle; bangles and other items (15)

£300 - 400

This lot will be subject to USA Fish and Wildlife regulations if imported into the USA.

62

#### **A CHARM BRACELET, NECKLACE AND RING**

The 9ct rose gold curb link bracelet, with padlock clasp and safety chain, suspending fifteen assorted charms, including a pendant-mounted half-sovereign, dated 1912, length approximately 16.5cm and weight approximately 28 grams; an Edwardian seed pearl set necklace, the centre front of bow-tied ribbon and swag design, to a fancy link chain, with push-in clasp, approximate length 38.70cm and weight 8 grams; and an amethyst single-stone ring, size K, 18ct gold (3)

£300 - 500

For details of the charges payable in addition to the final Hammer Price of each Lot please refer to paragraphs 7 & 8 of the Notice to Bidders at the back of the catalogue.



63

**63  
A DIAMOND STAR BROOCH/PENDANT, VICTORIAN**

The central old round brilliant-cut diamond, *measuring approximately 9.0 x 8.4 x 4.5mm*, to a twelve-pointed surround, set with graduated old round brilliant-cut and rose-cut diamonds, with detachable brooch fitting, *approximate length 39.5mm and width 39.5mm*, *estimated total diamond weight approximately 7.00 - 7.80cts*

**£4,000 - 6,000**



64



65

**64  
A DIAMOND SINGLE-STONE RING**

Claw-set with a round brilliant-cut diamond, *measuring approximately 1.00ct*, the shoulders set with single-cut diamonds, to a plain hoop, *size J½*, *stamped 'PLATINUM'*

**£800 - 1,000**

**65  
A DIAMOND SINGLE-STONE RING**

Claw-set with a round brilliant-cut diamond, *estimated weight approximately 0.65ct*, to a plain hoop, *size I*, *stamped 'PLAT'*

**£400 - 600**



66

**66  
A DIAMOND BROOCH**

Of ribbon and bow design set with three round brilliant-cut diamonds, *estimated total diamond weight approximately 0.95ct* and further embellished with old round brilliant-cut and rose-cut diamonds, *width approximately 42mm*, *stamped '585'*

**£600 - 800**

**67  
TWO DIAMOND SET RINGS**

Comprising: a triple cluster ring, set with graduated old round brilliant-cut diamonds, to a plain hoop, *size N½*, *estimated total diamond weight approximately 0.75ct*; also a ring claw-set with three graduated round brilliant-cut diamonds, to a plain hoop, *size R*, *estimated total diamond weight approximately 0.63ct* (2)

**£300 - 400**

68  
No Lot

**69  
A PAIR OF RUBY TASSEL EARRINGS, 19TH CENTURY, COMPOSITE**

Each designed as a fringed tassel, the surmount accented with circular-cut rubies, *length approximately 35mm*, *with later post fittings*

**£300 - 500**

**70  
A SNAKE BANGLE**

Of expanding coiled design, the engraved head with circular-cut ruby-set eyes, *stamped 9ct*, *British hallmarks*, *stamped 'STEEL SPRING'*, *gross weight approximately 29 grams*

**£300 - 500**

Made by renowned Birmingham jewellers Smith & Pepper, established in 1899. Manufacturers, Mr Smith and his uncle Mr Pepper, made a wide-range of jewellery featuring many designs. This Egyptian-style snake bangle became especially fashionable after Egyptologist Howard Carter's discoveries in the early 20th century. Of course, the snake motif is a recurring design in antique jewellery, representing eternal love and wisdom.



70

71

**A CULTURED PEARL NECKLACE WITH DIAMOND CLASP,**

Composed of very slightly graduated cultured pearls, *measuring approximately 8.0 to 8.5mm diameter*, to a shell-shaped push-in clasp, with radiating borders of graduated rose and old brilliant-cut diamonds, around a central cultured pearl, *overall length approximately 81cm, stamped '18K', estimated total diamond weight approximately 0.75ct, pearls untested*

£600 - 800

72

**A DIAMOND AND ROCK CRYSTAL HEART-SHAPED FOB WATCH, WITH CHAIN AND A LOCKET, VICTORIAN**

The fob watch applied to the front with old brilliant and rose-cut diamond foliate motifs to a rock crystal ground, *width approximately 22mm*; the fancy-link chain, *length approximately 46cm, stamped '15ct'*; the foliate engraved locket with serpent surmount, *length approximately 33mm (3)*

£700 - 900

73

**AN OPAL AND DIAMOND RING, EARLY 20TH CENTURY**

Set with three graduated oval cabochon-cut opals, interspersed by pairs of old round brilliant-cut diamonds, with scroll-pierced gallery, to a plain hoop, *finger size N, estimated total diamond weight approximately 0.76ct*

£600 - 800

74

**A MICRO MOSAIC BROOCH, EARLY 19TH CENTURY**

The oval micro mosaic depicting classical ruins in a landscape setting, to a black rectangular ground, within a yellow metal filigree-work frame, *measuring approximately 42.2 x 50.6mm*

£300 - 400

75

**A DEMI-STAR DIAMOND BROOCH**

Set throughout with old round brilliant-cut diamonds, *width approximately 49mm, estimated total diamond weight approximately 1.60cts*

£500 - 700

76

**A SEED-PEARL AND DIAMOND BRACELET, LATE 19TH CENTURY**

Comprising ten rows of seed-pearls, flanking the central rose-cut diamond-set oval plaque, of scroll and foliate design, rubover-set to the centre with an old round brilliant-cut diamond, *measuring approximately 2.7mm in diameter*, with rose-cut diamonds to the slide-in clasp, *plaque measuring approximately 48.2 x 31.0mm, length approximately 17.4cm, seed-pearls untested*

£500 - 700

77

**A CULTURED PEARL AND DIAMOND RING,**

With central cultured pearl, *measuring approximately 11.9 x 11.8mm*, flanked by crossover shoulders, each claw set with three very slightly graduated round brilliant-cut diamonds, to a plain hoop, with sizing clip, *approximate finger size P, stamped '18K CJ', estimated total diamond weight approximately 0.59ct, pearl untested*

£500 - 700

78

**TWO CRESCENT-SHAPED BROOCHES**

Comprising: a crescent and foliate motif brooch, set with graduated old round brilliant, single and rose-cut diamonds, *approximate length 40mm, estimated total diamond weight approximately 1.00-1.25ct*; also another crescent brooch, set with graduated circular cabochon-cut opals and rose-cut diamonds, *approximate length 50.5mm, British hallmarked 9ct white gold (2)*

£800 - 1,200

79

**A DIAMOND TWO-STONE TWIST RING**

Claw-set with two old round brilliant-cut diamonds, to a plain hoop, *size J, stamped '18ct' 'PLAT', estimated total diamond weight approximately 1.10cts*

£400 - 600

80

**A CAT'S EYE CHRYSOBERYL AND DIAMOND CLUSTER RING, 1982**

Centrally-set with an oval cabochon-cut cat's eye chrysoberyl, within a surround of round brilliant-cut diamonds, *size M½, stamped '750', London hallmark, estimated total diamond weight approximately 0.40ct*

£400 - 600

81

**A CULTURED PEARL NECKLACE WITH ZIRCON AND DIAMOND CLASP**

Designed as two graduated rows of cultured pearls, to a clasp set with an oval-cut blue zircon, framed with single-cut diamonds, *length of longest row approximately 43cm, pearls untested*

£400 - 600

82

**A BLUE ZIRCON AND DIAMOND CLUSTER RING**

Claw-set with a step-cut blue zircon, *measuring approximately 9.0 x 6.9 x 5.3mm*, within a canted rectangular surround millegrain set with single-cut diamonds, to a plain hoop, *finger size R, stamped '18CT', estimated total diamond weight approximately 0.48ct*

£600 - 800



71



72



73



74



75



76



77

83

**A PAIR OF AMETHYST EAR STUDS AND AN AMETHYST AND SEED-PEARL NECKLACE**

The ear studs with four circular-cut amethysts interspersed with crossed batons accented with seed-pearls, *width approximately 15mm, stamped '375', makers mark 'D&F'*; and a necklace of Art Nouveau style set throughout with seed-pearls accented with circular, oval and pear-shaped amethysts, to a fancy-link chain, *length approximately 37cm, seed-pearls untested (2)*

£400 - 600

84

**A GREEN TOURMALINE AND SEED PEARL NECKLACE, EDWARDIAN**

The centre front of fringed design, composed of floral clusters of seed-pearls, circular and pear-cut green tourmalines, all suspended from a fine belcher-link chain, also set with seed-pearls, *length approximately 52cm, stamped '15C', pearls untested*

£800 - 1,200

85

**A GEM-SET BUTTERFLY BROOCH, VICTORIAN**

Set with graduated rose-cut diamonds, circular and oval-cut rubies, circular-cut sapphires and graduated seed-pearls, *measuring approximately 27.2 x 36.7mm, with detachable brooch fitting and additional safety chain, seed-pearls untested*

£600 - 800

86

**AN EMERALD, DIAMOND AND SEED-PEARL BROOCH**

Depicted as a sword intersecting a circle, set with five cushion-cut emeralds, *the largest measuring 3.9 x 5.2 x 1.9mm*, four single-cut diamonds and embellished with seed-pearls, *length 50mm, stamped 15ct, pearls untested*

£500 - 600

87

**A DIAMOND FIVE-STONE RING, VICTORIAN**

Set with a graduation of old round brilliant-cut diamonds, with rose-cut diamond accents, to a scrollwork gallery, with plain hoop, *size N, estimated total diamond weight approximately 1.00-1.25cts*

£800 - 1,200

88

**A RUBY AND DIAMOND BANGLE**

Set to the front with a line of graduated circular-cut rubies and embellished with single-cut diamonds, *inner circumference approximately 18cm, stamped 9ct, estimated total diamond weight approximately 0.25ct*

£800 - 1,200

89

**A CULTURED PEARL AND DIAMOND NECKLACE**

Designed as three slightly-graduated rows of cultured pearls, *measuring from approximately 7 - 8.5mm*, to a shaped-circular clasp set with graduated old round brilliant and rose-cut diamonds, *length approximately 38cm, cultured pearls untested*

£2,000 - 3,000

90

**A DIAMOND FOLIATE SPRAY BROOCH AND A CULTURED PEARL AND DIAMOND PENDANT,**

Comprising: a foliate spray brooch grain set with graduated round brilliant and single-cut diamonds, *measuring approximately 44.0 x 33.0mm, estimated total diamond weight approximately 1.00ct*; and a pendant with central millegrain rubover-set old round brilliant-cut diamond, to a bow-tied ribbon, set with rose-cut diamonds, with baroque cultured pearl drop, all suspended from a fine fancy-link chain, *pendant measuring approximately 30.1 x 17.3mm, chain length approximately 40cm, estimated principal diamond weight approximately 0.16ct, cultured pearl measuring approximately 9.0 x 8.0mm, pearls untested (2)*

£500 - 800

91

**TWO DIAMOND-SET COCKTAIL WATCHES**

Comprising: an early 20th century example, with champagne-coloured circular dial, with arabic numerals, the bezel millegrain rubover-set with round brilliant-cut diamonds, additionally set to the scroll shoulders with smaller similar and square-cut diamonds, *case stamped 'PLATINUM', estimated total diamond weight approximately 2.00cts*, to a later 9ct white gold mesh link bracelet, *British hallmarks, with sliding clip-in clasp, gross weight approximately 23 grams*; also another cocktail watch, with pale cream tonneau-shaped dial, with arabic numerals, signed 'HAMILTON', with diamond set bezel, *case stamped '14KT & PLAT TRIM', estimated total diamond weight 0.15ct, one diamond deficient*, to a 9ct white gold strap, with textured finish and fold-over clasp, *with British hallmarks, gross weight 23 grams (2)*

£800 - 1,200

92

**THREE ASSORTED GEM-SET BROOCHES AND A SIMILAR PENDANT, EDWARDIAN**

Comprising: a floral shaped-circular brooch/pendant, with central old round brilliant-cut diamond, *estimated diamond weight approximately 0.12ct*, amidst seed-pearls, *measuring approximately 25.1 x 27.5mm*; a crescent-shaped brooch, set with graduated seed-pearls, *diameter approximately 25.5mm, stamped 'HG&S 15C'*; a seed-pearl set foliate spray brooch, *measuring approximately 46.0 x 20.0mm*; and an open circular pendant, set with graduated circular-cut turquoise cabochons and seed-pearls, *length approximately 43.0mm and width 24.0mm, seed-pearls untested (4)*

£300 - 500

93

No lot

94

**A COLLECTION OF JEWELLERY**

Comprising: a ruby and diamond cluster ring, *size K½, stamped '750'*; a two-metal daisy ring, *size L, stamped '750'*; two gem-set rings with seed-pearls; an amethyst heart foliate brooch; a citrine floral brooch; a seed-pearl bar-brooch; and a 1907 sovereign pendant and chain, *seed-pearls untested (8)*

£600 - 800





84



83



85



86



87



88



89

95

**A DIAMOND BROOCH/PENDANT, EARLY 20TH CENTURY**

With central millegrain rubover-set old round brilliant-cut diamond, measuring approximately 4.5mm diameter x 2.8mm deep, within two graduated open-circular borders and surmounted by a bow-tied ribbon motif, set throughout with graduated similar and rose-cut diamonds, with detachable brooch and bow-form pendant fittings, measuring approximately 33 x 22.7mm, estimated total diamond weight approximately 1.50cts

£700 - 900

96

**A DIAMOND NECKLACE, EDWARDIAN**

Of floral and swag design set with old round brilliant-cut diamonds to a fine-link chain, length approximately 48cm, estimated total diamond weight approximately 2.50cts, fitted case stamped 'Hamilton & Inches, Edinburgh'

£500 - 700

97

**A SAPPHIRE AND DIAMOND PLAQUE RING, EARLY 20TH CENTURY**

Claw-set with an oval cut sapphire, measuring approximately 10.8 x 6.5 x 5.7mm, within a rectangular surround, pavé set with old round brilliant-cut diamonds, with similarly cut diamonds to each shoulder, to a plain hoop, size S, stamped '18CT PT'

£600 - 800

98

**A PAIR OF DIAMOND AND CULTURED PEARL PENDENT EAR CLIPS, EARLY 20TH CENTURY**

Each comprising a line of slightly graduated old brilliant-cut diamonds, surmounting an open pear-shaped drop, with central cultured pearl and old brilliant-cut diamonds to the lower scalloped edge, length approximately 45mm, estimated total diamond weight approximately 3.00-3.25cts, cultured pearls untested

£400 - 600

99

**A SYNTHETIC SAPPHIRE AND DIAMOND CLUSTER RING**

with central cushion-cut synthetic sapphire, measuring approximately 8.1 x 6.9 x 4.95mm, within a surround of old round brilliant-cut diamonds, to a plain hoop, size N½, stamped '18CT', estimated total diamond weight approximately 0.60ct

£600 - 800

100

**A DIAMOND AND GREEN ENAMELLED BROOCH, EARLY 20TH CENTURY**

With central claw-set old round brilliant-cut diamond, measuring approximately 3.20mm diameter x 2.15mm deep, within a petal-shaped surround and open borders of graduated smaller similar and rose-cut diamonds, also with green guilloché enamelled wavy border, with detachable brooch fitting and additional hinged suspension hoop, diameter 31.6mm, estimated total diamond weight approximately 1.50-2.00cts

£700 - 1,000

101

**A DIAMOND CRESCENT BROOCH**

Set with old round brilliant-cut and rose-cut diamonds, width approximately 21mm, estimated total diamond weight approximately 1.50cts

£600 - 800

102

**A PAIR OF SAPPHIRE AND DIAMOND CLUSTER EAR STUDS, EDWARDIAN**

Each claw-set with an oval-cut sapphire, measuring approximately 6.4 x 5.9mm, within a surround of old round brilliant-cut diamonds, with screw-turned post fittings, estimated total diamond weight approximately 1.00-1.20cts

£1,500 - 2,000

103

**A SAPPHIRE AND DIAMOND RING**

Claw-set with three graduated oval-cut sapphires, framed by old round brilliant-cut diamonds, with ornate shoulders, to a plain hoop, size O, stamped '18', with British hallmarks, estimated total diamond weight approximately 0.30ct

£500 - 800

104

**TWO DIAMOND CLUSTER RINGS**

Comprising: one with a central pearl, framed with old round brilliant-cut diamonds, to plain hoop size K½, pearl untested; and a circular-cut sapphire, framed with old round brilliant-cut diamonds, to a plain hoop, size K, stamped '18ct' and maker's mark 'H&I' (2)

£400 - 600

105

**A SAPPHIRE AND DIAMOND CLUSTER RING, EARLY 20TH CENTURY**

With central millegrain rubover-set square-cut sapphire, measuring approximately 5.9 x 5.4 x 3.4mm, within a border of single-cut diamonds, also with three similarly cut diamonds to each shoulder, to a plain hoop, finger size Q, estimated total diamond weight approximately 0.48ct

£400 - 600

106

**TWO CULTURED PEARL NECKLACES, MODERN**

Comprising: a uniform-size cultured pearl necklace, pearls approximately 6.8mm diameter; individually knotted, with flowerhead design push-in clasp also set with cultured pearls, approximate length 54cm, stamped '18CT'; also a slightly graduated cultured pearl necklace, pearls approximately 7.5 - 8.5mm diameter, individually knotted, with shaped oval push-in clasp, rubover-set with an oval-cut dark blue cabochon, approximate length 44cm, white metal stamped '14K', all pearls untested (2)

£300 - 500



95



96



97



99



98



100



101



102



107

107

#### **A DIAMOND CRESCENT BROOCH**

Claw-set with old round brilliant-cut diamonds throughout, *width approximately 90mm, estimated total diamond weight approximately 3.55cts*

**£700 - 900**



108

108

#### **A PAIR OF SYNTHETIC RUBY AND DIAMOND PENDENT EARRINGS, EARLY 20TH CENTURY**

Each comprising a millegrain rubover-set oval-cut synthetic ruby, *measuring approximately 6.0 x 5.0 x 2.5mm*, with similarly-set old round brilliant-cut diamonds to the cardinal points, suspended from a line of two matching diamonds, conjoined by fine belcher links, with wire fittings, *lengths approximately 31mm, estimated total diamond weight approximately 0.81ct*

**£300 - 500**



109

109

#### **A DIAMOND SINGLE-STONE RING, EARLY 20TH CENTURY**

Claw-set with a round brilliant-cut diamond, *estimated weight approximately 0.95ct*, to a plain hoop, *size K½, stamped '18CT', maker's mark 'M.B.S.'*

**£1,000 - 1,500**



110

110

#### **A RUBY AND DIAMOND CLUSTER RING**

Claw-set circular-cut ruby, *measuring approximately 6.4mm diameter x 3.6mm deep*, within a border of round brilliant-cut diamonds, to a plain hoop, *finger size O, British hallmarked 18ct white gold, estimated total diamond weight approximately 1.00cts*

**£700 - 800**



111

111

#### **A DIAMOND NECKLACE, ART DECO STYLE**

Of open tapering design, millegrain rubover-set with graduated old round brilliant and single-cut diamonds, with two curved channel-set borders of baguette-cut diamonds, all suspended from a fine belcher-link chain, *length approximately from clasp to tip of drop 26cm, stamped '18CT PT', estimated total diamond weight approximately 1.50cts*

**£800 - 1,200**



112

112

#### **A RUBY AND DIAMOND BROOCH, EDWARDIAN**

Of octagonal open form with stylised florette set with old brilliant-cut diamonds, within a border of calibre-cut rubies and rose-cut diamonds, *width approximately 38mm, estimated total diamond weight approximately 0.85ct, case stamped 'Tessiers Ltd'*

**£600 - 800**

113

#### **A NATURAL PEARL AND DIAMOND RING**

The natural pearl, *measuring approximately 11.0mm* centrally inlaid with a collet-set old brilliant-cut diamond, between baguette-cut diamond shoulders, *size M½, estimated diamond weight approximately 0.20ct*

**£600 - 800**

Accompanied by a report from GCS stating that the pearl is natural, freshwater, with no indications of treatment. Report number 79234-43, dated 20th September 2019.

114

#### **A JADEITE BEAD NECKLACE**

Designed as two graduated rows of polished circular drilled jadeite beads, *diameters approximately 5.2 - 9.5mm, length of shortest row approximately 42cm, jadeite has not been tested for natural origin, colour or treatment*

**£500 - 700**



115

**A PAIR OF DIAMOND, JADEITE AND ONYX EARRINGS, ART DECO**

Of geometric design with jadeite drop suspended within an onyx surround, to a tapering knife-edge and embellished with rose-cut diamonds, *length approximately 50mm, jadeite untested for natural colour or treatment*

£600 - 800

116

**AN ONYX, EMERALD, SAPPHIRE AND DIAMOND BROOCH**

Designed as a bow, set with polished onyx, a step-cut emerald, similarly-cut diamonds and calibré-cut sapphires, *width approximately 40mm*

£2,600 - 3,000

117<sup>Y</sup>

**TWO PAIRS OF GEM-SET PENDENT EARRINGS, EARLY 20TH CENTURY**

Comprising: a pair of seed-pearl set earrings, with large slim jadeite drops, *length approximately 79mm, stamped '15CT'*; and a pair of coral 'corallium rubrum', onyx, seed-pearl and diamond Art Deco pendent earrings, *length approximately 61mm, stamped with French control marks; pearls untested, jadeite has not been tested for natural colour origin or treatment (2)*

£500 - 700

This lot will be subject to USA Fish and Wildlife regulations if imported into the USA.

118

**A JADEITE RING**

Collet-set with an oval jadeite cabochon, to a plain hoop, *size O, jadeite untested for natural colour or treatment*

£400 - 600

For details of the charges payable in addition to the final Hammer Price of each Lot please refer to paragraphs 7 & 8 of the Notice to Bidders at the back of the catalogue.



119

**A CARVED JADEITE PENDANT WITH CHAIN, EARLY 20TH CENTURY**

The tapering rounded-rectangular jadeite drop, carved with gourds and foliate motifs measuring approximately 43.6 x 19.2 x 6.8mm, with metal foliate cap, suspended from a fancy flat scroll-link chain, *length of chain approximately 41cm, stamped '22', gross weight approximately 20 grams, jadeite not tested for natural colour or treatment*

£400 - 600

120

**A GREEN HARDSTONE BANGLE**

Set to the front with a central oval cabochon-cut garnet, mounted in a foliate setting, further embellished with small circular cabochon-cut garnets, *inner circumference approximately 18cm, stones untested*

£400 - 500

121

**A COLLECTION OF JEWELLERY**

Comprising: a bracelet with padlock clasp, *stamped 9ct, gross weight approximately 22 grams*; a bracelet composed of jadeite panels and pierced circular motifs, *stamped '14K', jadeite has not been tested for natural origin, colour or treatment*; a pair of 9ct gold oval earclips, *gross weight approximately 12 grams*; an 18ct gold necklace, claw-set with two round brilliant-cut diamonds; a 22ct gold wedding band; together with three assorted gem-set rings (8)

£400 - 600

122

**A COLLECTION OF ITEMS**

Comprising: a box link chain, *approximate length 71.5cm, stamped '750', gross weight approximately 25 grams*; together with eight assorted hardstone and other gem-set charms (9)

£600 - 800



123

**A CULTURED PEARL AND DIAMOND NECKLACE AND EARRINGS, EARLY 20TH CENTURY**

Designed as two rows of slightly-graduated cultured pearls, *diameters approximately 8 - 8.5mm*, individually knotted, to a pierced shaped-rectangular clasp, set with graduated round brilliant, single and rose-cut diamonds, *approximate length of shortest row 43.5cm*, *estimated total diamond weight 0.80 - 1.00ct*; also a pair of cultured pearl earstuds, with post fittings, *approximate diameter 8mm*, *all pearls untested*, (2)

£800 - 1,200

124

**AN ENAMEL AND SEED-PEARL PENDANT AND CHAIN**

Of Art Nouveau style enamelled with two green and copper coloured leaves above three seed-pearls and a seed-pearl drop, to a fine-link chain, *width approximately 29mm*, *stamped 15ct*, *length of chain approximately 44cm* and *stamped 15ct*, *pearls untested*

£400 - 600

125

**A KUNZITE AND DIAMOND RING**

Claw-set with a kunzite, *measuring approximately 15.2 x 11.0 x 9.5mm*, the petal shaped shoulders set with round brilliant-cut diamonds, to a plain hoop, *size K*

£400 - 600

126

**A PAIR OF ROCK CRYSTAL AND DIAMOND EARRINGS AND A ROCK CRYSTAL BROOCH**

Each earring carved from rock crystal, in the form of a flowerhead, with round brilliant-cut diamond accents to the centre, *hook fittings*; and a brooch, designed as a flowerhead, set with a blue cut crystal to the centre and single-cut diamond accents to the stem, *width approximately 40mm* (2)

£500 - 700

127

**A DIAMOND SINGLE-STONE RING, MODERN**

Claw-set with a round brilliant-cut diamond, *certificated diamond weight 1.17cts*, to a plain hoop, *size L*, *stamped '18K 750'*

£3,000 - 5,000

Accompanied by a GIA report no. 8700292, dated 3/27/97, stating that the 1.17cts diamond is F colour and VVS1 clarity.

128

**A PEARL AND DIAMOND BAR BROOCH**

Designed as an alternating line of pearls of various tints, apricot, grey and greenish-pink and millegrain-set old round brilliant-cut diamonds, *width approximately 45mm*, *estimated total diamond weight approximately 1.32ct*, *with fitted case*, *pearls untested*

£1,000 - 2,000

129

**A DIAMOND SINGLE-STONE RING**

Claw-set with a round brilliant-cut diamond, *estimated weight approximately 1.84cts*, to a plain hoop, *size H*

£2,500 - 3,500

Accompanied by GSI report no D1735800108, dated July 07 2009, stating that the 1.84ct diamond is H colour and I1 clarity.

130

**AN OPAL AND DIAMOND CLUSTER RING**

Collet-set with an oval cabochon-cut opal, *measuring approximately 13.75 x 10.18 x 6.91mm*, framed by single-cut diamonds, to a plain hoop, *size L½*, *stamped '18ct&PT'* with associated case stamped *Richard Ogden Ltd*

£700 - 900

131

**AN OPAL, PEARL AND GEM-SET PENDANT AND OPAL BRACELET**

The pendant of Art Nouveau open design, set with an oval cabochon-cut opal and further embellished with circular cabochon-cut opals, seed-pearls and two circular peridots, to a fine-link chain, *length approximately 45cm*, *stamped 9ct*, *pearls untested*; and a bracelet set to the front with nine graduating opals, *clasp stamped 9ct* (2)

£300 - 400

132

**AN OPAL AND DIAMOND RING, EARLY 20TH CENTURY**

Set with three graduated oval cabochon-cut opals, with two vertical borders of three old round brilliant-cut diamonds, to a scroll-pierced gallery and plain hoop, *size S*, *stamped '18CT'*, *estimated total diamond weight approximately 0.33ct*

£300 - 500

133

**A TURQUOISE, PEARL AND DIAMOND PENDANT BROOCH, EDWARDIAN**

Of scrolling and foliate design, set throughout with pearls and turquoises and accented with old round brilliant-cut diamonds, *width approximately 38mm*, *stamped '14'*, *estimated total diamond weight approximately 0.55ct*, *pearls untested*

£700 - 900

134

**A GEM-SET AND ENAMELLED PENDANT, EARLY 20TH CENTURY**

Of open, stylised geometric design, channel set with calibr -cut rubies, also with old round brilliant-cut diamonds and graduated baroque pearls, to an opalescent shaded enamel ground, all suspended from fine belcher links, with bolt-ring clasp and additional later clasp, *length from clasp to tip of central drop approximately 29cm*, *stamped '18CT'*, *accompanied by fitted case*, *pearls untested*

£800 - 1,200



123



124



126



125



127



128



129

135

**AN AQUAMARINE AND DIAMOND BAR BROOCH**

Collet-set with an octagonal-cut aquamarine, *measuring approximately 10.0 x 8.0 x 4.7mm*, the bar accented with rose-cut diamonds, *width approximately 60mm, stamped '15CT'*

£300 - 400

136

**THREE GEM-SET DRESS RINGS**

Comprising: a ring claw-set with three graduated circular-cut yellow sapphires, within millegrain rubover-set borders of single-cut diamonds, *size N, British hallmarked 18ct white gold, estimated total diamond weight approximately 0.25ct*; an amethyst and diamond circular cluster ring, *size M½, stamped '18CT PLAT', estimated total diamond weight approximately 0.50ct*; also an aquamarine and diamond oval cluster ring, *size O, stamped '18CT', estimated total diamond weight approximately 0.42ct (3)*

£600 - 800

137

**A TANZANITE AND DIAMOND PENDANT AND CHAIN**

Claw-set with an oval-cut Tanzanite, *measuring approximately 12.6 x 10.7 x 6.2mm*, framed by round brilliant-cut diamonds, to a fine-link chain, *chain length approximately 43cm, estimated total diamond weight approximately 0.40ct (2)*

£600 - 800

138

**A TANZANITE AND DIAMOND RING**

The pear-shaped tanzanite, *weighing approximately 2.00cts*, framed by round brilliant-cut diamonds within a fancy surround, to a plain squared hoop, *size M, estimated total diamond weight approximately 0.40ct*

£700 - 1,000

Accompanied by previous valuation documents.

139

**A THREE-STONE SAPPHIRE AND DIAMOND RING**

Claw-set with three graduated cushion-shaped sapphires, embellished with single-cut diamonds, to a plain hoop, *size N½, stamped '18CT' and 'PLAT'*

£300 - 400

140

**A SAPPHIRE AND DIAMOND RING**

Claw-set with an oval-cut sapphire, *measuring approximately 10.9 x 9.2 x 4.5mm*, the shoulder set with graduated lines of square-cut diamonds, to a plain hoop, *size N, stamped '750', British hallmarks*

£600 - 800

141

**A SAPPHIRE AND DIAMOND BOW BROOCH**

Claw-set with oval-cut sapphire, *measuring 6.8 x 5.6 x 3.9mm*, embellished with old round brilliant-cut and single-cut diamonds, *width approximately 30mm, estimated total diamond weight approximately 0.45ct*

£500 - 700

142

**A SAPPHIRE AND DIAMOND RING**

Of bombé design, pavé-set with circular-cut sapphires and round brilliant-cut diamonds, *size H, stamped '950', French assay mark, estimated total diamond weight approximately 1.00ct*

£300 - 400

143

**A SAPPHIRE AND DIAMOND RING**

Claw-set with an oval-cut sapphire, *measuring approximately 8.8 x 6.9 x 4.1mm*, the shoulders accented with clusters of round brilliant-cut diamonds, to a plain hoop, *size K, stamped '18K'*

£400 - 500

144

**A SAPPHIRE AND DIAMOND RING**

The cushion-shaped sapphire between pavé-set round brilliant-cut diamond shoulders, to a wide plain hoop, *size L, stamped '18K'*

£600 - 800

145

**A SAPPHIRE AND DIAMOND RING**

Of geometric abstract design, claw-set with a circular-cut sapphire and channel-set with single-cut diamonds, to a plain hoop, *size N, stamped '14K'*

£300 - 400

146

**A SAPPHIRE AND DIAMOND CLUSTER RING**

Claw-set with a circular-cut sapphire, framed by single-cut diamonds, to a raised gallery and plain hoop, *size N, stamped '18ct', estimated total diamond weight approximately 0.20ct*

£400 - 600

147

**A SAPPHIRE AND DIAMOND CLUSTER RING, RETAILED BY JOSEPH BONNAR**

Collet-set with an oval-cut sapphire, framed by round brilliant-cut diamonds and circular-cut sapphires, to a thin plain hoop, *size M½, partial British hallmarks, estimated total diamond weight approximately 0.50ct*

£600 - 800

148

**TWO CULTURED PEARL NECKLACES**

Each designed as a single strand of cultured pearls, *each pearl measuring approximately 6mm diameter*, to a clustered cultured pearl clasp, *each length approximately 40cm, one with maker's mark 'LGK' and stamped '750', the other stamped '375', accompanied by cases stamped 'Mappin & Webb' (2)*

£300 - 500



149



150



151



152



153



154



155

149

#### **A GEM-SET BEE BROOCH**

Set throughout with round brilliant-cut diamonds, with circular cabochon-cut ruby eyes, the body channel-set with French-cut emeralds, measuring approximately 19.5 x 30.4mm, stamped '18K', estimated total diamond weight approximately 0.80ct

£600 - 800

150

#### **A SAPPHIRE, EMERALD AND DIAMOND BROOCH**

Designed as two birds, with ruby-set eyes, perched amid a floral and foliate twig, set with sapphires, carved as petals, and emeralds, carved as leaves, the birds embellished with old round brilliant-cut diamonds, length approximately 50mm, stamped '750', estimated total diamond weight approximately 0.24ct, one ruby eye deficient

£800 - 1,000

151

#### **A SAPPHIRE AND DIAMOND BANGLE, LATE VICTORIAN**

Claw-set with an oval-cut sapphire, measuring approximately 9.0 x 7.7 x 4.2mm, framed by millegrain rubover-set old round brilliant-cut diamonds, similarly set to each shoulder with old round brilliant-cut diamonds, with triple-split shoulders, to a two-row band, bangle diameter approximately 64mm, estimated total diamond weight approximately 2.20cts

£2,000 - 3,000

152

#### **A PAIR OF SYNTHETIC SAPPHIRE AND DIAMOND PENDENT EARRINGS, LATE VICTORIAN**

Each claw set with a circular-cut synthetic sapphire, measuring approximately 3.8 x 2.7mm, surmounted by a similarly set single-cut diamond, within an open oval border of graduated old round brilliant-cut diamonds, all suspended from another old round brilliant-cut diamond, with wire fittings, length approximately 26mm, estimated total diamond weight approximately 1.29cts

£500 - 700

For details of the charges payable in addition to the final Hammer Price of each Lot please refer to paragraphs 7 & 8 of the Notice to Bidders at the back of the catalogue.

153

#### **A PAIR SAPPHIRE AND DIAMOND CLUSTER EARRINGS**

Each set to the centre with a circular-cut sapphire measuring approximately 5.7 x 6.0 x 3.2mm, framed by single-cut diamonds, with post and screw back fittings, stamped '9ct', estimated total diamond weight approximately 0.90ct

£600 - 800

154

#### **A SAPPHIRE AND DIAMOND CLUSTER RING, EARLY 20TH CENTURY**

Claw-set with a circular-cut sapphire, measuring approximately 7.0 x 4.0mm, framed by old round brilliant-cut diamonds, to a plain hoop, size M½, estimated total diamond weight approximately 0.60ct

£800 - 1,000

155

#### **AN EMERALD AND DIAMOND CLUSTER RING, LATE VICTORIAN**

Claw-set with a circular cut emerald, measuring approximately 6.3 x 3.5mm, within a border of old round brilliant-cut diamonds, to a tapering hoop, size O, stamped '18c', estimated total diamond weight approximately 0.60ct

£300 - 500

156

#### **A PAIR OF SAPPHIRE AND DIAMOND CLUSTER EARRINGS**

Each with central circular-cut sapphire, framed by round brilliant-cut diamonds with fancy-shaped sapphires in between, diameter approximately 9mm, post fittings with butterflies, stamped '750', British hallmarks and maker's mark 'LC'

£400 - 600

157

**A DIAMOND BOW BROOCH**

Of open form with bow surmount, claw-set with old round brilliant-cut diamonds, *width approximately 34mm, estimated total diamond weight approximately 2.70cts*

**£500 - 800**

158

**A DIAMOND RIVIÈRE NECKLACE**

Claw-set with a graduated line of round brilliant-cut diamonds, *diameters from approximately 3.10 to 5.00mm, with push-in clasp and additional safety clip, length approximately 43cm, stamped '750', estimated total diamond weight approximately 18.00-20.00cts*

**£4,000 - 6,000**

With accompanying documentation from International Gemological Reports, numbered J003136, dated 14th August 2014, stating stone type: natural diamond; total carat: 19.45ct; colour: F-G; clarity VS/SI.

159

**AN AQUAMARINE RING**

Corner-claw-set with a rectangular-cut aquamarine, *measuring approximately 10.25 x 7.70 x 6.50mm, to a plain hoop, stamped '950', British hallmarks, 'BEARDS', fitted box*

**£600 - 800**

160

**A DIAMOND BAR BROOCH, EARLY 20TH CENTURY**

Of tapering design, millegrain-set with old round brilliant-cut diamonds, *length approximately 57mm, estimated total diamond weight approximately 2.50cts*

**£1,000 - 1,500**

161

**A DIAMOND SINGLE-STONE RING**

Claw-set with a square-cut diamond, to a plain hoop with grooved shoulders, *size L, stamped '750', estimated diamond weight approximately 0.75ct*

**£800 - 1,200**

162

**A DIAMOND TWO-STONE BAR BROOCH, EARLY 20TH CENTURY**

Claw set with two old round brilliant-cut diamonds, to a plain knife bar, *width approximately 60mm, estimated diamond weights approximately 1.07cts and 1.17cts, fitted case stamped 'SORLEY, GLASGOW'*

**£2,000 - 3,000**

163

**A DIAMOND COCKTAIL WATCH, BULOVA, MID-20TH CENTURY**

The round silver-coloured dial, with baton numerals, the bezel and outer scrolling border, claw-set with graduated round brilliant and a few single-cut diamonds, *estimated total diamond weight approximately 1.14cts, stamped 18KT 0.750', fitted to a tapering flat brick-link bracelet, with textured finish and slide-in clasp, length approximately 15cm, British hallmarked 9ct white gold, for London 1969, gross weight 26 grams*

**£600 - 800**

164

**A PAIR OF DIAMOND CLUSTER EARRINGS**

Each with central claw-set cushion-cut diamond, within a surround millegrain-set with old round brilliant-cut diamonds, *with post fittings, backs deficient, estimated total diamond weight approximately 1.90-2.00cts*

**£800 - 1,200**

165

**A DIAMOND BROOCH**

Designed as an open flower and foliate spray, with central claw-set round brilliant-cut diamond, *measuring approximately 0.25ct, the petals and leaf pavé-set with round brilliant-cut diamonds, length approximately 47mm, stamped '750' maker's mark 'C&F', estimated total diamond weight approximately 2.70cts*

**£500 - 800**

166

**A DIAMOND THREE-STONE PENDANT AND CHAIN**

Claw-set with an old round brilliant-cut diamond weighing approximately 0.60ct, between two old round brilliant-cut diamonds, to a fine curb-link chain, *estimated total diamond weight approximately 0.75ct, clasp stamped '9ct'*

**£300 - 400**

167

**A PAIR OF DIAMOND EAR STUDS**

Claw-set with old round brilliant-cut diamonds, *approximate diameters 5.55 and 5.20mm, with screw-turned post and butterfly fittings, stamped '18 CARAT GOLD' (butterflies only), estimated total diamond weight approximately 1.37cts*

**£400 - 600**

168

**AN AMETHYST AND SEED-PEARL PENDANT/BROOCH**

Claw-set with a circular-cut amethyst, *measuring 22.8 x 22.8 x 14.0mm, framed by a double crescent row of graduating seed-pearls and old round brilliant-cut diamonds, width approximately 30mm, one seed-pearl deficient, seed-pearls untested*

**£500 - 700**





158



157



159



161



160



162



164



163

169

**A DEMANTOID GARNET AND DIAMOND RING AND SIMILAR EARSTUDS, BY KAT FLORENCE**

The ring with central claw-set oval-cut demantoid garnet, *measuring approximately 6.7 x 4.7mm*, with graduated round brilliant-cut diamonds to the shoulders, to a pointed plain hoop, *size P½, British hallmarks, signed 'Kat Florence' and stamped '750', estimated total diamond weight approximately 0.36ct*; and a pair of similar earstuds, each set with an oval-cut demantoid garnet and round brilliant-cut diamond-set gallery, with post fittings, *length approximately 8.3mm, British hallmarks, posts and butterflies signed 'Kat Florence' and stamped '18K', estimated total diamond weight 0.12cts; each with fitted box (2)*

**£500 - 700**

Each accompanied by Kat Florence original documentation, stating the stone weights and diamond grades (D/Flawless).

170

**AN AQUAMARINE AND DIAMOND BAR BROOCH**

Claw-set to the centre with a step-cut aquamarine measuring approximately 12.7 x 10.0 x 6.7mm, the bar accented with two collet-set clusters of old round brilliant-cut diamonds, *width approximately 55mm, estimated total diamond weight approximately 0.25ct, box stamped 'B.J. Jolly, 10A New Bond Street, W.1.'*

**£400 - 600**

171

**AN OPAL NECKLACE**

Designed as a graduated row of white opal beads measuring from approximately 10.3 - 4.6mm, with faceted glass spacers, *length approximately 40cm, clasp stamped 'PT' and '18CT' with a single diamond*

**£400 - 500**

172

**AN ENAMEL, CULTURED PEARL AND DIAMOND BROOCH AND A PAIR OF DIAMOND EARRINGS**

The floral cluster design brooch, with central cultured pearl, *measuring approximately 6.3mm diameter*, within an openwork surround set with single-cut diamonds, to a green guilloché enamelled ground, *overall diameter 25.3mm, British hallmarked 18ct gold, estimated total diamond weight approximately 0.24ct*; also a pair of shaped-circular openwork scroll earrings, set with graduated round brilliant-cut diamonds, *measuring approximately 13 x 11.2mm, estimated total diamond weight approximately 1.00ct (2)*

**£800 - 1,200**

173

**AN EMERALD AND DIAMOND RING**

Claw-set with a step-cut emerald, *measuring approximately 7.8 x 5.9 x 3.8mm*, the shoulders embellished with old round brilliant-cut diamonds, with ornate scroll gallery, to a plain hoop, *size S½, estimated total diamond weight approximately 0.90ct*

**£300 - 400**

174

**TWO EMERALD AND DIAMOND RINGS**

Comprising: a three-stone ring, claw-set with a central square-cut emerald, *measuring approximately 6.5 x 6.3 x 3.4mm*, and two round brilliant-cut diamonds, *weighing approximately 0.30ct each, size G, stamped 'PLATINUM'*; also a half-eternity ring, set to the front with an alternating line of circular-cut emeralds and round brilliant-cut diamonds, *size H (2)*

**£700 - 900**

175

**AN EMERALD AND DIAMOND FIVE-STONE RING, EARLY 20TH CENTURY**

With central cushion-cut diamond, *measuring approximately 4.5 x 4.1 x 2.6mm*, flanked to either side by an oval-cut emerald and another small old round brilliant-cut diamond, within a millegrained oval border with lunette-pierced gallery, to a plain hoop, *size M½, estimated total diamond weight approximately 0.51ct*

**£500 - 600**

176

**AN EMERALD AND DIAMOND CLUSTER RING**

Claw-set with a step-cut emerald, *measuring approximately 4.7 x 4.3 x 2.6mm*, within two open circular borders, with round brilliant-cut diamonds, to a plain hoop, *size M, stamped 'PLAT', estimated total diamond weight approximately 1.40cts*

**£700 - 900**

177

**AN EMERALD AND DIAMOND CLUSTER RING**

Obliquely-set with a pear-shaped emerald and round brilliant-cut diamond cluster, *size N½, estimated total diamond weight approximately 1.50cts*

**£600 - 800**

178

**AN EMERALD AND DIAMOND BOMBÉ RING**

The oval-cut emerald within a radiating surround of round brilliant-cut diamond panels, *size K, stamped '14K' and '18K', estimated total diamond weight approximately 1.40cts*

**£600 - 800**

179

**AN EMERALD AND DIAMOND RING**

Collet-set with an oval-cut emerald to a tapering hoop, pavé-set to the front with round brilliant-cut diamonds, *size M½, stamped '18K', estimated total diamond weight approximately 1.00ct*

**£600 - 800**

180

**A PAIR OF EMERALD AND DIAMOND CLUSTER EAR STUDS**

Each claw-set with a central circular-cut emerald framed by round brilliant-cut diamonds, with post fittings, *diameter approximately 9mm, estimated total diamond weight approximately 0.45ct, one diamond deficient*

**£300 - 500**

181

**AN EMERALD AND DIAMOND PENDANT AND CHAIN**

Claw-set with an oval-cut emerald framed by round brilliant-cut diamonds, to a fine-link chain, *both pendant and chain stamped '750', estimated total diamond weight approximately 0.70ct*

**£300 - 500**

182

**A CHARM BRACELET**

Suspending twenty-three various charms, *length approximately 19cm, stamped '9', with British hallmarks, gross weight approximately 50 grams*

**£500 - 600**



184



185



188



187



183



186

183

#### A DIAMOND SINGLE-STONE RING

Claw-set with an old round brilliant-cut diamond, weighing approximately 1.77cts, to a plain hoop, size Q, stamped '18CT PLAT'

£800 - 1,200

184

#### A PAIR OF MOTHER-OF-PEARL AND DIAMOND EARRINGS

Each circular plaque set with mother-of-pearl and round brilliant-cut diamonds with ropetwist design accents, diameter approximately 30mm, estimated total diamond weight approximately 4.30-4.40cts, post fittings with additional security clasp

£2,200 - 2,400

185

#### AN EMERALD AND DIAMOND BROOCH, DEAKIN & FRANCIS, 1967

Designed as a stylised foliate spray accented with circular-cut emeralds and round brilliant-cut diamonds, length approximately 68mm, estimated total diamond weight approximately 1.10cts, stamped '18', British hallmarks and maker's mark 'D&F'

£600 - 800

186

#### A DIAMOND SINGLE-STONE RING, HAMILTON & INCHES

Claw-set with a round brilliant-cut diamond, estimated weight approximately 1.80cts, to a plain hoop, size G, British hallmarks and maker's mark 'H&I', stamped '750'

£3,000 - 4,000

187

#### AN EMERALD AND DIAMOND COCKTAIL RING, MID-20TH CENTURY

Claw-set with a rounded square cabochon-cut emerald, measuring approximately 17.0 x 15.9 x 10.1mm, tapering claws set with rose-cut diamonds, to a plain hoop, size N½, two diamonds deficient

£500 - 800

188

#### A GEM-SET BIRD BROOCH, CIRCA 1960

Designed as two lovebirds perched upon a branch, the carnelian bead bodies with circular-cut ruby and sapphire ropetwist wings, further embellished with circular-cut ruby and brilliant-cut diamonds, width approximately 40mm

£400 - 600

189

#### A CITRINE DRESS RING, CIRCA 1950

Claw-set with a step-cut citrine, measuring approximately 24.1 x 19.1 x 22.5mm, to a triple-ring hoop, size L

£500 - 800

190

#### A GEM-SET BROOCH AND A SYNTHETIC RUBY AND DIAMOND COCKTAIL RING

The foliate spray brooch, set with diamonds, emeralds and a ruby, length approximately 55mm, estimated total diamond weight approximately 1.50cts; and a cocktail ring, with central claw-set oval-cut synthetic ruby, measuring approximately 12.9 x 12.2 x 6.3mm, within a scrolling border of rubover-set old round brilliant-cut diamonds, to a plain hoop, size K, stamped '750', estimated total diamond weight approximately 1.00ct (2)

£1,000 - 1,500

191

**A TOPAZ AND DIAMOND RING**

Claw-set with a cushion-cut topaz, *measuring approximately 17.1 x 14.0 x 6.1mm*, framed by round brilliant-cut diamonds, to a plain hoop, *size M, stamped '750'*

**£3,000 - 4,000**

192

**A PAIR OF DIAMOND HOOP EARRINGS**

Each pavé-set with round brilliant-cut diamonds, of various near colourless and light brown tints, *length approximately 50mm, post fittings with security clasp, estimated total diamond weight approximately 8.00-10.00cts, diamonds have not been tested for natural colour or treatment*

**£5,000 - 7,000**

193

**A GEM-SET BROOCH**

Of basket and flower design, in two-tone metal and embellished with circular-cut rubies and a sapphire, and brilliant, marquise, baguette and square-cut diamonds, *diameter approximately 40mm*

**£1,000 - 1,500**

194

**A DIAMOND BROOCH**

Of flowerhead and scroll design, set throughout with round brilliant-cut diamonds, *width approximately 55mm, estimated total diamond weight approximately 5.00-6.00cts*

**£2,500 - 3,000**

195

**AN EMERALD AND DIAMOND CLUSTER RING**

Claw-set with an octagonal-cut emerald, *measuring approximately 11.4 x 9.5 x 4.5mm*, framed by a cluster of single-cut and marquise-cut diamonds, to a ribbed hoop, *size J, estimated total diamond weight approximately 1.50cts*

**£800 - 1,000**

196

**A RUBY AND DIAMOND CLUSTER RING**

Claw-set with circular-cut rubies and round brilliant-cut diamonds, to plain hoop, *size O, stamped '750', British hallmarks, estimated total diamond weight approximately 1.00ct*

**£800 - 1,200**

197

**AN AMETHYST AND DIAMOND BROOCH**

With central claw-set cabochon-cut amethyst, *measuring approximately 18.0 x 15.0 x 11.9mm*, the openwork frame embellished with millegrain-set old round brilliant-cut diamonds, *width approximately 32mm*

**£1,200 - 1,400**

198

**A PAIR OF JADEITE AND DIAMOND EARRINGS**

Each mounted with a circular disc of jadeite, set to the side with graduated marquise and pear-cut diamonds and further embellished with round brilliant-cut diamonds, *overall width 14mm, estimated total diamond weight approximately 0.95ct, post fittings stamped '750', jadeite has not been tested for natural colour origin or treatment*

**£400 - 600**

199

**A PAIR OF OPAL AND DIAMOND EARRINGS**

Each claw-set with a circular cabochon-cut opal framed with round brilliant-cut diamonds, *estimated total diamond weight approximately 0.70ct, with post fittings*

**£600 - 800**

200

**A GEM-SET GIARDINETTO BROOCH, MID-20TH CENTURY**

Designed as a wire-work basket, claw-set with pear, oval and circular-cut assorted gems, including aquamarine, amethyst, peridot, garnet, seed-pearls and others, *measuring approximately 37.9 x 42.0mm, British hallmarks for 9ct gold, Birmingham, 1954, maker's mark 'D&F', pearls untested*

**£300 - 500**

201

**A CULTURED BRACELET WITH GEM-SET CLASP**

Designed as four rows of fairly uniform cultured pearls, *diameters approximately 5 - 5.4mm*, individually knotted, also with three knife-bar spacers, each claw-set with two circular-cut sapphires and a similarly-cut ruby, to a floral shaped-oval clasp, also claw-set with single-cut diamonds and circular-cut rubies and sapphires, *length approximately 18cm, stamped '14KT', pearls untested*

**£500 - 600**

202

**A CULTURED PEARL AND DIAMOND RING**

Designed as a cluster of cultured pearls and round brilliant-cut diamonds, to a plain hoop, *size M½, stamped '585', numbered '032', pearls untested*

**£400 - 600**

203

**A CULTURED PEARL NECKLACE**

Designed as a single strand of cultured pearls measuring approximately 6.3 - 6.4mm, to a circular clasp, *length approximately 63cm, stamped '750', British hallmarks and maker's mark 'AJ', cultured pearls untested*

**£300 - 500**



191



192



193



194



195



196



197



198



204

**A DIAMOND AND COIN NECKLACE**

The necklace composed of fluted metal beads, suspending a detachable collet-set coin accented with a row of round brilliant-cut diamonds to the surmount, *length of necklace approximately 36cm, length of detachable pendant approximately 50mm, gross weight approximately 123 grams, necklace and pendant stamped '750', Italian maker's marks*

**£4,000 - 5,000**

205

**A DIAMOND AND SAPPHIRE MALTESE CROSS BROOCH/ PENDANT**

Designed as a Maltese cross, set with round brilliant-cut diamonds and with a circular-cut sapphire to the centre, *measuring approximately 7.4 x 7.3 x 5.0mm, width approximately 55mm, estimated total diamond weight approximately 5.50 – 6.50cts*

**£2,500 - 3,500**

206

**A RUBY AND DIAMOND CLIP**

Of geometric architectural design, set with calibr -cut rubies, square-cut and round brilliant-cut diamonds, *width approximately 32mm, estimated total diamond weight approximately 0.60-0.70ct*

**£1,200 - 1,400**

207

**A TOURMALINE AND DIAMOND DRESS RING**

Of abstract design, claw-set with a rectangular-cut tourmaline, *measuring approximately 16.4 x 9.4 x 5.9mm, off-set to the side with round brilliant-cut diamonds, size S½, estimated total diamond weight approximately 0.40ct*

**£600 - 800**

208

**A SPHENE AND DIAMOND RING, KAT FLORENCE**

Ornately set with an oval-cut sphene, *estimated weight approximately 1.95cts*, the ornate shoulders set with round brilliant-cut diamonds, to a pointed plain hoop, *size M, stamped '18K', estimated total diamond weight 0.32ct, fitted box*

**£500 - 700**

209

**AN ENAMEL AND DIAMOND BRACELET**

Each link applied with black enamel and embellished with round brilliant-cut diamonds, *length approximately 18cm, clasp stamped '750', estimated total diamond weight approximately 4.00-4.50cts, gross weight approximately 45 grams, signs of repair to enamel*

**£2,200 - 2,400**

210

**A CHALCEDONY AND DIAMOND BRACELET**

Designed as a row of oval cabochon-cut chalcedony, alternating with crosslinks, set with graduated round brilliant-cut diamonds, *length approximately 16cm, clasp stamped '18K', estimated total diamond weight approximately 4.00-4.50cts, gross weight approximately 40 grams*

**£2,000 - 3,000**

211

**A COLLECTION OF ITEMS**

Comprising: a fine belcher-link longchain, set at intervals with baroque-form pearls, *chain of adjustable length, maximum length approximately 158cm, gross weight 26 grams, pearls untested*; a 9ct gold fancy flat-link bracelet, with engraved foliate motifs, *length approximately 21.5cm, gross weight approximately 30 grams*; a fancy-link Albert chain, *length approximately 34cm, stamped 'PT', gross weight approximately 10 grams*; and an Edwardian oval-cut moonstone cabochon set necklace (4)

**£500 - 700**

212

**A TURQUOISE AND DIAMOND BROOCH**

Depicted as a floral spray with stamens embellished with turquoise and leaves accented with round brilliant-cut diamonds, *width approximately 45mm, estimated total diamond weight approximately 0.30ct*

**£400 - 600**

213

**A TURQUOISE AND DIAMOND COMPOSITE CHARM RING**

The rope-twist ring to a heart-shaped pendant set to one side with circular cabochon-cut turquoises and to the other side with old round brilliant-cut and single-cut diamonds, *size G, estimated total diamond weight approximately 1.20cts*

**£400 - 600**

214

**TWO LADY'S WRIST WATCHES, MID-20TH CENTURY**

Comprising: an Omega watch, with champagne-coloured square dial, with baton numerals, signed, to a tapering woven mesh-link bracelet, with fold-over clasp, *length approximately 16.8cm, stamped '750'*; and a cocktail watch, with slim rectangular dial, signed 'TITUS', flanked by French-cut synthetic rubies, channel set to the shoulders, to a broad brick-link bracelet, *length approximately 16.5cm, stamped with Portuguese gold control marks, gross weight approximately 44 grams* (2)

**£400 - 600**

215

**A COLLECTION OF JEWELLERY**

Comprising: a round brilliant-cut diamond-set three-stone twist ring, in three-coloured metal, *size M, stamped '750'*; two other gem-set rings; a ruby and diamond necklace, *stamped '750 18K'*; and a round brilliant-cut diamond pendant with chain (5)

**£700 - 900**



204



205



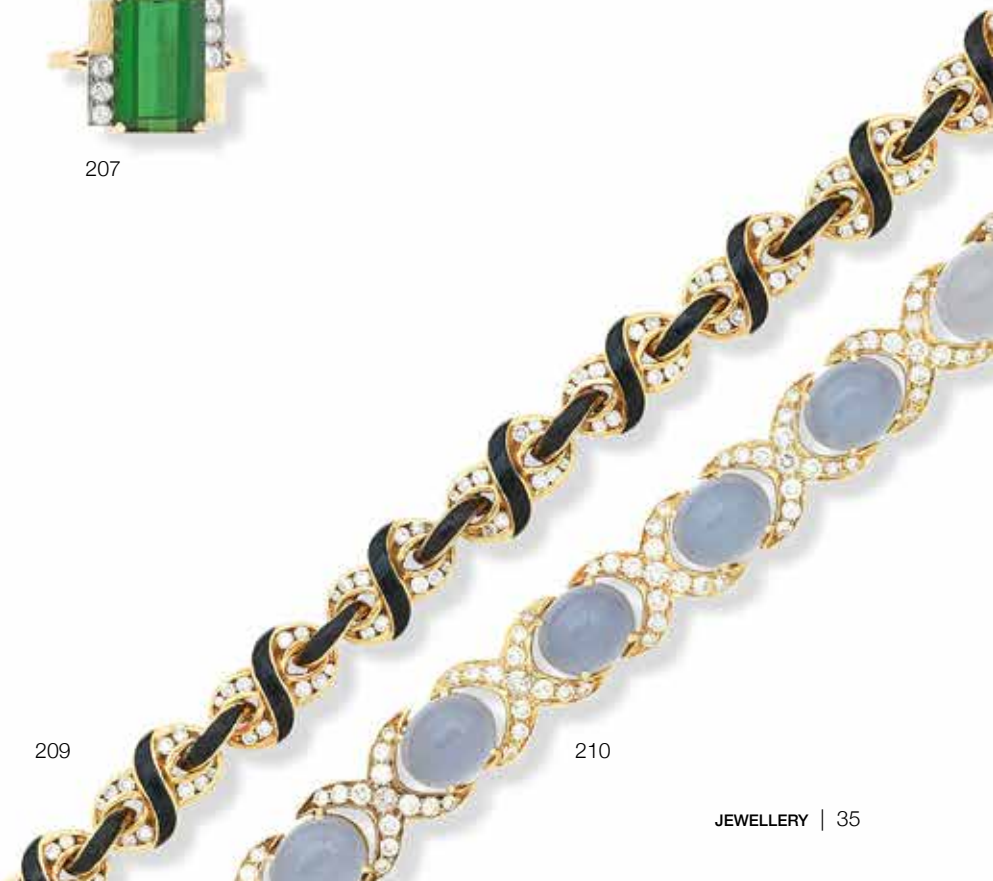
206



207



208



209

210

216

**A DIAMOND COMMITMENT RING, BY HENNEL**

Designed as an 18ct gold tapering, circular-section band, one terminal rubover-set with a round brilliant-cut diamond, the other with polished finish, size K, *British hallmarks, stamped '750', estimated diamond weight approximately 0.25ct, gross weight approximately 9 grams, with original signed fitted box*

**£500 - 700**

217

**TWO LADY'S WRIST WATCHES, GUCCI AND RAYMOND WEIL**

Comprising: a circular dialed watch, to an articulated metal strap, *dial signed 'Gucci', inner circumference approximately 15cm, numbered '3400L';* and a circular dialed watch, the dial applied with round brilliant-cut diamonds, date aperture at 3 o'clock, to an articulated metal strap, *dial signed 'Raymond Weil', length approximately 15cm, numbered '5349' (2)*

**£200 - 300**

218

**A PAIR OF AQUAMARINE EARCLIPS, A SIMILAR PENDANT AND A RUBY BROOCH**

The earclips each claw-set with an oval-cut aquamarine, to a scroll surround, *length approximately 28mm*; the pendant claw-set with a pear-cut aquamarine, with gilt metal chain; the foliate spray brooch claw-set with circular-cut rubies, *stamped 'K18', length approximately 53mm, British import hallmarks (3)*

**£300 - 500**

219

**A TOURMALINE BEAD SET NECKLACE, LOUISE SHAFAR, GLASGOW**

Composed of yellow metal fine belcher-form links, with central line drop, set with seven 'watermelon' tourmaline polished square-section beads, *length from clasp to tip of drop approximately 27cm, stamped '750', fitted case stamped 'LOUISE SHAFAR', with accompanying original documentation*

**£200 - 300**

Designer Louise Shafar is a trained goldsmith, Fellow of the Gemmological Association (FGA) and diamond specialist (DGA). Based in Giffnock, in Glasgow, Louise has previously worked in the Middle and Far East, sourcing and grading gemstones and specialises in hand-made commissions.

220

**A COLLECTION OF JEWELLERY**

Comprising: a cultured pearl necklace; a diamond stick pin, set with a pear-shaped diamond, *measuring approximately 6.5 x 4.5 x 3.1mm*; a memorial hairwork locket; a seed-pearl brooch; and a seal ring, *pearls untested (5)*

**£500 - 600**

221

**A CULTURED PEARL AND RUBY BRACELET AND A RUBY AND DIAMOND MADONNA PENDANT**

The bracelet composed of three rows of cultured pearls, with a ruby and cultured pearl set circular clasp, *length of bracelet approximately 19cm*; the Madonna pendant, of rounded lozenge form, set with circular-cut rubies, within an outer border of square-cut rubies and rose-cut diamonds, *measuring approximately 45.0 x 26.8mm, stamped '18K', some rubies deficient, pearls untested*

**£400 - 600**

222

**A RUBY AND DIAMOND BROOCH, EARLY 20TH CENTURY**

Of foliate spray design, set with graduated round brilliant and single-cut diamonds and claw-set with oval and circular-cut rubies, *measuring approximately 29.0 x 44.9mm, British hallmarks for 18 carat gold, maker Cropp & Farr*

**£400 - 600**

223

**A RUBY AND DIAMOND CLUSTER RING**

Claw-set with an oval-cut ruby, *measuring approximately 7.9 x 6.5 x 2.8mm*, framed by round brilliant-cut diamonds, with similarly-cut diamond set shoulders, to a plain hoop, size M, *stamped '750'*

**£300 - 400**

224

**A RUBY AND DIAMOND DEMI-PARURE, MID-20TH CENTURY**

Comprising: a foliate spray design brooch, set with oval-cut rubies and graduated single-cut diamonds, *length approximately 54mm, stamped 'V51172 18K';* and a pair of similarly-set matching earrings, with hinged post and clip fittings, *length approximately 25mm, stamped '585' (2)*

**£400 - 500**

225

**A DIAMOND FIVE-STONE RING**

Claw-set with uniform round brilliant-cut diamonds, flanked above and below by open plain-polished borders, to a tapering hoop, size K½, *stamped '750', estimated total diamond weight approximately 0.80ct*

**£400 - 600**

226

**A DIAMOND PENDANT**

Channel-set to a line with round brilliant-cut diamonds, to a fine-link chain, *chain stamped '750', estimated total diamond weight approximately 0.50ct*

**£500 - 700**

227

**A DIAMOND CLUSTER RING AND A DIAMOND HALF-ETERNITY RING**

The first claw-set with round brilliant-cut diamonds, to a plain hoop, size Q, *stamped '18CT', estimated total diamond weight approximately 0.50ct*; the second set to the front with two rows of round brilliant-cut diamonds, size Q, *stamped 'PLAT' '18CT', estimated total diamond weight approximately 0.44ct (2)*

**£400 - 600**

228

**A LADY'S DIAMOND WRIST WATCH**

The circular bezel set with old round brilliant-cut diamonds, the dial applied with Arabic numerals, to a black strap, *estimated total diamond weight approximately 2.80-3.00cts*

**£400 - 500**

229

**A SEED-PEARL NECKLACE, VICTORIAN**

The intricate design set with woven seed-pearls, backed by mother-of-pearl, *length approximately 43cm, seed-pearls untested, fitted case stamped 'MALLETT, BATH'*

**£400 - 600**

230

**A LADY'S 9CT GOLD AND DIAMOND WRIST WATCH, BUECHE-GIROD**

The oval matt gold dial with black hands and encircled with small brilliant-cut diamonds, to a textured mesh strap, *17 jewel movement signed, length approximately 17.5cm, with case*

**£400 - 600**

231

**AN AMETHYST AND SEED-PEARL NECKLACE, EDWARDIAN**

Millegrain-set with three circular-cut amethyst and seed-pearl clusters to a necklace of scroll design embellished with seed-pearls and suspending an oval-cut amethyst drop, to a fine-link chain, *length approximately 24cm, seed-pearls untested*

**£300 - 500**

232

**A SYNTHETIC AMETHYST BROOCH AND A CULTURED PEARL BROOCH**

The first designed as a wirework and textured scroll, set with a circular-cut synthetic amethyst, *length approximately 66mm*; the textured scroll with wirework and beadwork decoration, accented with three cultured pearls, *length approximately 62mm, pearls untested (2)*

**£400 - 500**

The synthetic amethyst brooch was purchased directly from H Stern in Brazil by the current owner.

233

**A COLLECTION OF JEWELLERY**

Comprising: a diamond single-stone ring, claw-set with a round brilliant-cut diamond, with three graduated single-cut diamonds millegrain rubover-set to each shoulder, *size R, stamped 'PLAT', estimated principal diamond weight approximately 0.63ct*; a three-stone ring, claw-set with graduated round brilliant-cut diamonds, *size R, stamped 'PLAT', estimated total diamond weight approximately 0.45ct*; an open pear-shaped pendant, set with an aquamarine, diamonds and seed-pearls, with fine belcher link chain; and a green and white paste-set bar brooch (4)

**£500 - 600**

234

**A PEARL AND DIAMOND NECKLACE**

The single-strand of graduated design, *pearls measuring from approximately 6.3 x 5.7 - 3.4 x 3.2mm*, to a cluster clasp set with old round brilliant-cut diamonds, *length approximately 49cm, pearls untested*

**£600 - 700**

235

**TWO GEM-SET PENDANT/BROOCHES AND ANOTHER SIMILAR BROOCH, CIRCA 1890**

Each of open scroll design, one set with an oval-cut peridot amidst seed-pearl-set foliate motifs, *measuring 43.40 x 30.50mm, stamped '9CT'*; the second with central oval-cut amethyst amidst seed-pearls, *measuring 39.40 x 29.40mm*; the third set with graduated pear, oval and circular-cut amethysts and seed-pearls, *measuring 45.50 x 34.00mm, pearls untested (3)*

**£400 - 600**

236

**A CITRINE AND SEED-PEARL NECKLACE CENTREPIECE**

Of foliate and swag design set with an oval-cut citrine and three pear-shaped citrine drops, embellished with rose-cut diamonds, seed-pearls and an old round brilliant-cut diamond, *estimated diamond weight 0.15ct, length approximately 58mm, seed-pearls untested*

**£700 - 900**

For details of the charges payable in addition to the final Hammer Price of each Lot please refer to paragraphs 7 & 8 of the Notice to Bidders at the back of the catalogue.

237

**A CULTURED PEARL NECKLACE WITH DIAMOND CLASP**

Designed as three graduated rows of cultured pearls, *measuring approximately 9.1 x 9.2 - 5.5 x 5.1mm*, to an ornate clasp set with a cultured pearl and round brilliant-cut diamonds, *length approximately 43cm, estimated total diamond weight approximately 0.35ct, pearls untested*

**£400 - 600**

238

**A COLLECTION OF JEWELLERY**

Comprising: a foliate brooch set with citrines, possibly Bernard Instone; *width approximately 52mm*; a gem-set brooch, possibly by Amy Sandheim, *width approximately 75mm*; a foliate brooch set with a circular cabochon-cut moonstone, *width approximately 47mm*; an enamelled sea-horse brooch, *length approximately 78mm*; a ring by Georg Jensen set with amber-style cabochon, *size K, stamped 'GJ 51 DENMARK'*; a German pendant and chain, in the Secessionist style; and two enamelled butterfly brooches (8)

**£300 - 500**

239

**A COLLECTION OF STICKPINS**

Some set with gem-stones, in a variety of designs (16)

**£300 - 500**

240

**A GENT'S 18CT GOLD AUTOMATIC WRIST WATCH, BUECHE-GIROD, 1966**

The satin-finished gold-coloured dial with baton numerals and date aperture, *case diameter approximately 34mm, signed 'Bueche-Girod AUTOMATIC WATERPROOF', with import hallmarks, for London, 1966, also stamped '18K 750' and numbered '69076' and 'YG11610-1', fitted to a black leather strap*

**£300 - 400**

241

**A GENT'S MANUAL WIND SQUARE WRISTWATCH, GIRARD PERREGAUX, CIRCA 1950**

Movement: 17-jewel manual wind  
Dial: Brushed silvered, applied gilt dart hour markers, subsidiary seconds at 6, gilt faceted pointed baton hands  
Case: Brushed and polished yellow metal square, snap on back, stepped bezel, inner cap, No.72660033  
Strap/Bracelet: Brown leather  
Buckle/Clasp: Plated buckle  
Signed: Case, dial & movement  
Size: 27mm

**£400 - 600**

242

**A GENT'S STAINLESS STEEL QUARTZ CALENDAR BRACELET WATCH WITH ALARM, TAG HEUER, CIRCA 2005**

Model: Aquaracer Alarm  
Reference: WAF111Z RRM1573  
Signed: Case, dial & movement  
Size: 38mm

**£200 - 300**

243

**A GENT'S STAINLESS STEEL QUARTZ CALENDAR BRACELET WATCH, TAG HEUER, CIRCA 2005**

Model: Professional 200 Meters  
Reference: WE1111-R  
Signed: Case, dial & movement  
Size: 38mm  
Accompaniments: TAG Heuer box, outer card, instruction booklet

**£150 - 200**

244

**A DIAMOND FIVE-STONE RING**

Claw-set in a line with five round brilliant-cut diamonds, to a plain hoop, *size U, estimated total diamond weight approximately 2.50cts*

**£1,000 - 1,500**

245

**A DIAMOND FULL-ETERNITY RING, MODERN**

Alternately claw-set with round brilliant-cut and box-set with baguette cut diamonds, *size P½, estimated total diamond weight approximately 2.00-2.50cts*

**£300 - 500**

246

**A GENTLEMAN'S DRESS SET, ASPREY**

Comprising: a pair of cufflinks, four buttons and three studs, each with circular terminals, millegrain rubover-set to the centre with an old round brilliant-cut diamond, to a mother-of-pearl ground, within a foliate border, *stamped '18', with original fitted case stamped 'ASPREY & Co. LTD...'*

**£800 - 1,000**

247

**A DIAMOND DEMI-PARURE**

Comprising: a bangle channel-set with a line of twenty round brilliant-cut diamonds, *stamped '750', inner circumference approximately 18cm, estimated total diamond weight approximately 3.00cts*; and a ring of similar design, to a plain hoop, *size U, estimated total diamond weight approximately 0.40ct (2)*

**£700 - 900**

248

**A PAIR OF DIAMOND SET CUFFLINKS**

With knot-form terminals, each rubover-set to the centre with an old round brilliant-cut diamond, conjoined by a waisted bar, *stamped with Continental control marks, estimated total diamond weight approximately 0.20ct, gross weight approximately 16.5 grams*

**£500 - 700**

249

**A PAIR OF 18CT GOLD CUFFLINKS, MID-20TH CENTURY**

Each with reeded cylindrical swivel-bar terminals, conjoined by open bar links, with central reeded circular motif, *British hallmarks, French control marks, gross weight approximately 9 grams*

**£500 - 700**

250

**A 'CORTINA' BROOCH, ERNEST A. BLYTH, FOR GEORGE TARRATT**

Comprising three fused plates, each composed of bars of varying lengths, assembled overall as a stylised six-pointed star, *length approximately 60.5mm, stamped 9ct, British hallmarks, Birmingham, 1964, signed 'Ernest A. Blyth', gross weight approximately 19 grams, with original fitted case, stamped 'George Tarratt Ltd Leicester'*

**£200 - 400**

251

**A KRUGERRAND PENDANT NECKLACE**

The Krugerrand, dated 1974, within a plain polished bezel mount, to a belcher link chain, also suspending a 9ct gold bean-shaped fob, *approximate measurements: diameter of pendant 33.90mm, fob 21.10 x 12.00mm, length of chain 78.00cm, clasp stamped '9CT', fob with British hallmarks, gross weight approximately 57.70 grams*

**£1,000 - 1,500**

252

**A COLLECTION OF CUFFLINKS AND OTHER ITEMS**

Comprising: four pairs of cufflinks; assorted shirt studs; an Hermès cigar cutter pendant; a Chopard watch case; an Ebel lady's watch; and other miscellanea

**£600 - 800**

253

**TWO STICK PINS**

One claw-set with an oval cabochon-cut opal, *overall length approximately 72mm*; the other with a pearl above rose-cut diamond accents, *length approximately 83mm, pearl untested (2)*

**£300 - 500**

254

**A COLLECTION OF JEWELLERY**

Comprising: an opal and diamond ring, *stamped '18CT'*; a diamond full-eternity ring, *stamped '18CT'*; a cultured pearl and diamond floral bar brooch; a blue stone and simulated pearl spider bar brooch; a Chinese character decorated bar brooch; also a similar pair of cufflinks, *pearls untested (6)*

**£500 - 800**

255

**A PEARL AND DIAMOND HELMET BROOCH**

With central plumed helmet set with a baroque pearl, rose-cut diamonds and three cushion-cut rubies, with two baroque pearls either side in ornate settings, *width approximately 60mm, pearls untested*

**£400 - 600**





246



244



245



247



248



250



249

256

**A LADY'S 18CT GOLD BRACELET WATCH, BOUCHERON, 1970S**

The oval dial, with textured finish and baton numerals, signed, with two ropetwisted borders to the bezel, to a two-row ropetwisted bracelet, with slide-in clasp and additional safety chain, *British hallmarked and stamped '750', also numbered '98671', gross weight approximately 49.50 grams*

**£500 - 800**

257

**A LADY'S WRIST WATCH, OMEGA, MID-20TH CENTURY**

The gold-plated oval case, with charcoal and gold-coloured circular dial, with baton numerals, date aperture and white hands, *signed 'OMEGA AUTOMATIC Genève DYNAMIC', to a circular-pierced, tapering blue leather strap, watch-head approximately 26 x 31.5mm, with original fitted case*

**£400 - 600**

258

**A LADY'S 9CT THREE-COLOUR GOLD WRIST WATCH, BUECHE-GIROD, MID 20TH CENTURY**

The champagne-coloured square dial, signed and applied with baton numerals, *dial measuring approximately 9 x 9mm*, to an articulated flat-link bracelet, with textured finish, *length approximately 18cm, British hallmarks, gross weight approximately 41 grams*

**£300 - 500**

259

**A TRI-COLOURED NECKLACE, MODERN**

Of fringe design, *length approximately 39.5cm, stamped '375', gross weight approximately 34.7g*

**£400 - 600**

260

**A TRINITY RING, LES MUST DE CARTIER**

Comprising three entwined tri-coloured bands, *approximate size G, signed 'Les Must de Cartier' and stamped '750', gross weight approximately 6 grams*

**£500 - 700**

261

**A COLLECTION OF JEWELLERY, INCLUDING ITEMS BY MIKIMOTO**

Comprising: a three-row bracelet, composed of fairly uniform cultured pearls, *diameter approximately 4.5 - 5mm*, with foliate decorated push-in clasp, *length approximately 19.5cm, stamped '750' and 'M' for Mikimoto*; a similar two-row bracelet; and a cultured pearl ring, *both also by Mikimoto*; a cultured pearl and ruby open-oval brooch, *stamped '375', British hallmarks, maker's mark 'JAH'*; also a ruby and diamond open-circular brooch, *stamped '750', British hallmarks for 2000 and maker's mark 'A&V', all pearls untested (5)*

**£500 - 800**

262

**TWO GREY CULTURED PEARL AND GEM-SET NECKLACES**

The first designed as seven rows of grey baroque cultured pearls with faceted labradorite spacers, *length approximately 32cm*; the second designed as a single row of grey baroque cultured pearls with separate cultured pearl catch, with assorted rough stone spacers including garnets and amethysts, *length approximately 282cm, cultured pearls untested (2)*

**£250 - 350**

263

**A SINGLE-STONE DIAMOND RING**

Claw-set with a round brilliant-cut diamond, *weighing approximately 0.50ct*, to twisted shoulders, and a plain hoop, *size P, stamped '750'*

**£500 - 700**

264

**A CHARM BRACELET**

Suspending twenty-five various charms, *length approximately 20.5cm, gross weight approximately 45.9g*

**£500 - 700**

265

**A CULTURED PEARL NECKLACE, MIKIMOTO**

Designed as a single-row of slightly-graduated cultured pearls, *diameters approximately 9 - 9.5mm*, individually knotted, to a spherical push-in clasp, *approximate length 46cm, clasp signed and stamped '750', with original fitted case and box, pearls untested*

**£600 - 800**

266

**A PAIR OF CULTURED PEARL AND DIAMOND EARCLIPS, ALAN MARTIN GARD, 1979**

Each with central cultured pearl, *diameter approximately 8mm*, within a surround of textured discs and accented with round brilliant-cut diamonds, with clip fittings, *width approximately 22mm, stamped '750', London hallmark, maker's mark 'AMG', London hallmark, pearls untested*

**£400 - 600**

267

**A CULTURED PEARL AND DIAMOND NECKLACE, RETAILED BY JOSEPH BONNAR**

The single-strand of cultured pearls *each measuring approximately 11.2 x 10.3mm*, with spherical clasp accented with round brilliant-cut diamonds, *length approximately 43cm, clasp stamped '750', case stamped 'Joseph H. Bonnar', cultured pearls untested*

**£300 - 400**

268

**A DIAMOND DEMI-PARURE**

Comprising: a bracelet of wave design, set with a pear-shaped diamond to the centre, the rest of the design accented with round brilliant-cut diamonds, *length approximately 16cm*; and a ring of similar design, set with a pear-shaped diamond and a round brilliant-cut diamond, *size M; both stamped '750', British hallmarks and maker's mark, estimated total diamond weight approximately 1.50-2.00cts, gross weight approximately 11 grams. case stamped 'MIDAS'*

**£400 - 500**

269

**A DIAMOND HEART-SHAPED PENDANT WITH CHAIN, CHOPARD**

The heart-shaped pendant pavé-set with round brilliant-cut diamonds, to a black diamond set bale, *signed 'Chopard' to the reverse of bale and to chain, stamped '750', numbered*, to a circular-link chain, *length of chain approximately 42cm, chain stamped '750, estimated total diamond weight approximately 3.00-3.50cts (2)*

**£800 - 1,200**

270

**A LADY'S MANUAL WIND COCKTAIL BRACELET WATCH, UNIVERSAL GENÈVE**

Reference: 173258

Movement: 17-jewel Cal.245 manual wind

Dial: Sunburst champagne, applied alternating dot and baton markers, black outer minute divisions, gilt leaf hands

Case: Polished round, yellow metal, *stamped '18K 750'*, snap on back, fluted lugs, No.1103491

Strap/Bracelet: Woven yellow metal cord, *stamped '14K'*

Buckle/Clasp: Folding clasp

Signed: Case, dial & movement

£200 - 300

271

**A CHARM BRACELET, MODERN**

The fancy curb link bracelet, with push-in clasp, safety chain and clips, *approximate length 21cm, stamped '750'*, suspending 20 assorted charms; with an additional loose charm and padlock clasp, *several with British hallmarks, gross weight approximately 87 grams*

£600 - 800

272

**A COLLECTION OF JEWELLERY**

Comprising: a large foliate scroll design brooch, set with graduated rose-cut diamonds; an oval cabochon-cut rose quartz set brooch; a cushion-cut diamond and seed pearl cluster ring; six assorted pairs of earrings, most gem set; a lady's 9ct gold Omega watch; together with a half-pearl set ring, *pearls untested* (11)

£400 - 600

273

**FOUR ASSORTED GEM SET STICK PINS,**

Comprising: a Victorian stick pin with baluster terminal, set with circular-cut turquoise cabochons; another stick pin, with circular-cut ruby, within a border of single-cut diamonds to the terminal, contained in a tooled dark green leather fitted case; together with two stick pins with cabochon-cut opal set terminals (4)

£300 - 500

274

**A COLLECTION OF GEM-SET STICKPINS**

including one with a reverse crystal intaglio, depicting a hound; another with a gem-set frog-shaped terminal; three cameo-set examples; and nineteen others (24)

£500 - 700

275

**THREE ASSORTED DIAMOND AND ENAMEL BROOCHES**

Comprising: a Royal Horse Guards brooch, enamelled and set with single and rose-cut diamonds; a similar Grenadier Guards brooch; and another similarly set brooch, initialled within an oval, with outer seed-pearl border, *each accompanied by a case, seed-pearls untested* (3)

£600 - 800

276

**A PAIR OF ENAMEL AND DIAMOND OVAL CUFFLINKS**

Monogrammed with 'B' and a crested motif, embellished with old brilliant-cut and rose-cut diamonds on a royal blue ground edged in white, *length 17mm, one motif lacking*

£300 - 500

277

**A COLLECTION OF MOSTLY GEM-SET STICKPINS**

Comprising: one with circular-cut sapphire-set terminal; two stickpins of sporting interest; two examples with oval cameo-set terminals; and twenty others (25)

£500 - 700

278

**A COLLECTION OF GENTLEMAN'S DRESS SETS**

Comprising: an onyx stud, button and cufflink set, *stamped '18ct & Pt', in fitted case stamped Heming & Co Ltd*; a set of six buttons, *stamped '375', in fitted case*; and a pair of pearl clips, *stamped '14k', in fitted case, pearls untested* (3)

£300 - 500

279<sup>Y</sup>

**A COLLECTION OF MOSTLY GEM-SET STICKPINS**

Comprising: one with enamelled terminal, modelled as a knight's helmet, with dragon crest; another with oval shell cameo, depicting a classical portrait profile; another with a diagonal border of three rose-cut diamonds to the terminal; and twenty-two others (25)

£500 - 700

This lot will be subject to USA Fish and Wildlife regulations if imported into the USA.



274

For details of the charges payable in addition to the final Hammer Price of each Lot please refer to paragraphs 7 & 8 of the Notice to Bidders at the back of the catalogue.

280

**A GENTLEMAN'S DRESS SET**

Comprising: two pairs of cufflinks, four buttons and a pair of studs, each with central millegrain rubover-set early round brilliant-cut diamond, to a spiralling sunburst-carved mother-of-pearl ground, within reeded and bead borders, *stamped '18CT & PT', estimated total diamond weight approximately 0.46ct, case stamped 'THE GOLDSMITHS & SILVERSMITHS COMPANY LTD, LONDON'*

£500 - 700

281

**AN OPEN FACE POCKET WATCH, VICTORIAN**

with light cream enamelled dial, black Roman numerals and outer border of Arabic numerals, the case with off-set push-button to one side and engraved vacant cartouche, within a fastened garter, to the reverse, with key-wound movement, *approximate diameter 52.70mm, stamped 18ct, British hallmarked, approximate gross weight 113.50 grams*

£400 - 600

282

**THREE PAIRS OF CUFFLINKS**

Comprising: a textured oval pair set with circular-cut emeralds with baton terminals; a textured cigar-shaped pair, *stamped '375', case stamped Garrard & Co;* and another pair modelled as snipe with cartridge-shaped terminals, *stamped '750', case stamped Garrard & Co (3)*

£500 - 700

283

**A CIGARETTE LIGHTER, A CIGAR CUTTER AND A TOOTH-PICK, BY DUNHILL, ALSO A PAIR OF CUFFLINKS, 1980S**

All with all-over textured pattern, *the lighter, signed Dunhill, approximately 67mm long, the cutter approximately 38mm across and tooth-pick approximately 48mm long, all stamped '750', with British hallmarks, cutter and tooth-pick with maker's mark 'AD', the lighter in fitted case stamped Dunhill, the cufflinks with maker's marks 'R&R' (4)*

£800 - 1,200

284

**A GENT'S 9CT GOLD WRISTWATCH, OMEGA, CIRCA 1991**

The shaped oval gold-coloured dial, with satin finish and black baton numerals and hands, *signed 'OMEGA DE VILLE', fitted to a brick-link bracelet, with fold-over clasp, British hallmarks, gross weight approximately 60 grams*

£500 - 700

285

**A GENT'S WRIST WATCH, CHRONOGRAPH SUISSE**

The circular dial, with arabic numerals and two subsidiary dials, *stamped 'CHRONOGRAPH SUISSE', the crown flanked above and below by additional push-buttons, to a brown leather strap, watch-head diameter approximately 37mm, stamped '18K 750'*

£300 - 400

286

**A GENT'S 9CT GOLD WRIST WATCH, OMEGA**

The circular dial applied with arabic numerals and baton indicators, to a leather strap, *dial diameter approximately 29mm, stamped to the underside of case 'Omega Watch Co', '375', British hallmarks, numbered 156943*

£300 - 500

287

**A HALF-HUNTER POCKET WATCH AND CHAIN, J.W. BENSON**

The white circular dial applied with Roman numerals, with seconds dial at 6 o'clock, and with blue steel hands, *inscribed 'J W Benson London' and monogrammed to the reverse 'A.F.B', gross weight approximately 56 grams;* also a chain, with monogrammed charm, *both stamped '9', gross weight approximately 26 grams, fitted case stamped 'J W Benson Ltd' (2)*

£500 - 600

288

**FIVE ASSORTED HARDSTONE FOBS AND A RING**

Comprising: a shield-shaped locket/fob, set with bloodstone and carnelian; two similarly-set swivel fobs; a carnelian intaglio-crested fob; a chalcedony-set fob; also a scorpion-engraved octagonal bloodstone-set ring (6)

£400 - 600

289

**AN ENAMELLED GOLD MEMORIAL RING FOR GENERAL PAOLI, 1806-7**

designed as a broad band, inscribed *'General Paoli, Ob: 5 Feb 1807. AE 82', reserved on a white enamelled ground within black line borders and milled edges, with British hallmarks, for London, 1806-7, maker's mark 'SG', cased*

£800 - 1,200

Filippo Antonio Pasquale de' Paoli (6 April 1725 – 5 February 1807) was a Corsican patriot, statesman and military leader who was at the forefront of resistance movements against the Genoese and later French rule in the island. He became the president of the Executive Council of the General Diet of the People of Corsica, and also designed and wrote the Constitution of the state.

290

**A 9CT GOLD CIGARETTE CASE, EARLY 20TH CENTURY**

Of hinged and curved rounded-rectangular form, with engine-turned decoration and push-button thumb-piece, *measuring approximately 80.0 x 84.4 x 10.4mm, stamped 9ct, British hallmarks, Birmingham, 1924, maker's mark 'S&B', gross weight approximately 91 grams, with original black pochette*

£600 - 800

291

**A COLLECTION OF GENTLEMAN'S JEWELLERY**

Comprising: a pair of 9ct gold cufflinks, with oval terminals, with engraved initials in script, conjoined by oval belcher links, *British hallmarked, gross weight approximately 14 grams, fitted case stamped 'SORLEY, GLASGOW';* another similar pair, *stamped '15CT', approximate weight 10 grams, fitted case stamped 'SORLEY, GLASGOW';* a pair of engine-turned canted square cufflinks, *stamped '18CT', gross weight approximately 7 grams;* an Albert chain composed of slim oval links, *approximate length 34cm, stamped '9CT', gross weight approximately 6 grams;* five assorted studs; two various stickpins and another pin (12)

£600 - 800

292

**A COLLECTION OF GENTLEMAN'S JEWELLERY**

Comprising: 18 pairs of cufflinks, including examples by Montblanc, Tiffany & Co., Dunhill, Christian Dior, Korloff and others; a seed-pearl and round brilliant-cut diamond tie-clip, with safety chain, *stamped '18K';* and a 9ct gold oval signet ring, *size Z½, British hallmarks (20)*

£700 - 900

**END OF SALE**

For details of the charges payable in addition to the final Hammer Price of each Lot please refer to paragraphs 7 & 8 of the Notice to Bidders at the back of the catalogue.





280



281



282



282



282



283



284



284



# Index of Makers

ALAN MARTIN GARD	266	H STERN	232
AMY SANDHEIM	238	JOSEPH BONNAR	147, 267
ASPREY	246,	J W BENSON	287
BERNARD INSTONE	238	KAT FLORENCE	169, 208
BUECHE-GIROD	230, 240, 258	KORLOFF	292
BOUCHERON	256	LES MUST DE CARTIER	269
BULOVA	163,	LOUISE SHAFAR	219
CHOPARD	252, 269	MIKIMOTO	261, 265
CHRISTIAN DIOR	292	MONTBLANC	292
CHRONOGRAPH SUISSE	285	OMEGA	214, 257, 272, 284, 286
CROPP & FARR	222	RAYMOND WEIL	217
DEAKIN & FRANCIS	83, 185, 200	SMITH & PEPPER	70,
DUNHILL	283, 292	TAG	242, 243
EBEL	252	TIFFANY & CO.	292
ERNEST A BLYTH	250	UNIVERSAL GENÈVE	270
GEORG JENSEN	238		
GEORGE TARRATT	250		
GIRARD PERREGAUX	241		
GUCCI	217		
HAMILTON	91		
HAMILTON & INCHES	104, 186		
HENNELL	216,		
HERMES	252		

## Ring Sizes

English	Metric	American	French/Japanese
A	37.8252	1/2	-
A 1/2	38.4237	3/4	-
B	39.0222	1	-
B 1/2	39.6207	1 1/4	-
C	40.2192	1 1/2	-
C 1/2	40.8177	1 3/4	-
D	41.4162	2	1
D 1/2	42.0147	2 1/4	2
E	42.6132	2 1/2	-
E 1/2	43.2117	2 3/4	3
F	43.8102	3	4
F 1/2	44.4087	3 1/4	-
G	45.0072	3 1/4	5
G 1/2	45.6057	3 1/2	-
H	46.2042	3 3/4	6
H 1/2	46.8027	4	-
I	47.4012	4 1/4	7
I 1/2	47.9997	4 1/2	8
J	48.5982	4 3/4	-
J 1/2	49.1967	5	9
K	49.7952	5 1/4	10
K 1/2	50.3937	5 1/2	-
L	50.9922	5 3/4	11
L 1/2	51.5907	6	-
M	52.1892	6 1/4	12
M 1/2	52.7877	6 1/2	13
N	53.4660	6 3/4	-
N 1/2	54.1044	7	14
O	54.7428	7	15
O 1/2	55.3812	7 1/4	-
P	56.0196	7 1/2	16
P 1/2	56.6580	7 3/4	-
Q	57.2964	8	17
Q 1/2	57.9348	8 1/4	18
R	58.5732	8 1/2	-
R 1/2	59.2116	8 3/4	19
S	59.8500	9	20
S 1/2	60.4884	9 1/4	-
T	61.1268	9 1/2	21
T 1/2	61.7652	9 3/4	22
U	62.4026	10	-
U 1/2	63.0420	10 1/4	23
V	63.6804	10 1/2	24
V 1/2	64.3188	10 3/4	-
W	64.8774	11	25
W 1/2	65.4759	11 1/4	-
X	66.0744	11 1/2	26
X 1/2	66.6729	11 3/4	-
Y	67.2714	12	-
Y 1/2	67.8699	12 1/4	-
Z	68.4684	12 1/2	-

# Bonhams

AUCTIONEERS SINCE 1793



## London Jewels

New Bond Street, London | 14 July 2020

### ENQUIRIES

+44 (0) 20 7468 8278  
rachel.bailey@bonhams.com  
[bonhams.com/jewellery](https://bonhams.com/jewellery)

A DIAMOND 'ALHAMBRA' NECKLACE,  
BY VAN CLEEF & ARPELS  
£12,000 - 18,000 \*

\* For details of the charges payable in addition to the final hammer price, please visit [bonhams.com/buyersguide](https://bonhams.com/buyersguide)

## NOTICE TO BIDDERS

This notice is addressed by *Bonhams* to any person who may be interested in a *Lot*, and to all persons participating in the auction process including auction attendees, *Bidders* and potential *Bidders* (including any eventual *Buyer* of the *Lot*). For ease of reference we refer to such persons as "*Bidders*" or "you". Our List of Definitions and Glossary is incorporated into this *Notice to Bidders*. It is at Appendix 3 at the back of the *Catalogue*. Where words and phrases are used in this notice which are in the List of Definitions, they are printed in italics. IMPORTANT: Additional information applicable to the *Sale* may be set out in the *Catalogue* for the *Sale*, in an insert in the *Catalogue* and/or in a notice displayed at the *Sale* venue and you should read them as well. Announcements affecting the *Sale* may also be given out orally before and during the *Sale* without prior written notice. You should be alert to the possibility of changes and ask in advance of bidding if there have been any.

### 1. OUR ROLE

In its role as *Auctioneer* of *Lots*, *Bonhams* acts solely for and in the interests of the *Seller*. *Bonhams'* job is to sell the *Lot* at the highest price obtainable at the *Sale* to a *Bidder*. *Bonhams* does not act for *Buyers* or *Bidders* in this role and does not give advice to *Buyers* or *Bidders*. When it or its staff make statements about a *Lot* or, if *Bonhams* provides a *Condition Report* on a *Lot* it is doing that on behalf of the *Seller* of the *Lot*. *Bidders* and *Buyers* who are themselves not expert in the *Lots* are strongly advised to seek and obtain independent advice on the *Lots* and their value before bidding for them. The *Seller* has authorised *Bonhams* to sell the *Lot* as its agent on its behalf and, save where we expressly make it clear to the contrary, *Bonhams* acts only as agent for the *Seller*. Any statement or representation we make in respect of a *Lot* is made on the *Seller's* behalf and, unless *Bonhams* sells a *Lot* as principal, not on our behalf and any *Contract for Sale* is between the *Buyer* and the *Seller* and not with us. If *Bonhams* sells a *Lot* as principal this will either be stated in the *Catalogue* or an announcement to that effect will be made by the *Auctioneer*, or it will be stated in a notice at the *Sale* or an insert in the *Catalogue*.

*Bonhams* does not owe or undertake or agree to any duty or responsibility to you in contract or tort (whether direct, collateral, express, implied or otherwise). If you successfully bid for a *Lot* and buy it, at that stage *Bonhams* does enter into an agreement with you as the *Buyer*. The terms of that contract are set out in our *Buyer's Agreement*, which you will find at Appendix 2 at the back of the *Catalogue*, and this will govern *Bonhams'* relationship with the *Buyer*.

### 2. LOTS

Subject to the *Contractual Description* printed in bold letters in the *Entry* about the *Lot* in the *Catalogue* (see paragraph 3 below), *Lots* are sold to the *Buyer* on an "as is" basis, with all faults and imperfections. Illustrations and photographs contained in the *Catalogue* (other than photographs forming part of the *Contractual Description*) or elsewhere of any *Lots* are for identification purposes only. A photograph or illustration may not reflect an accurate reproduction of the colour(s) or true condition of the *Lot*. *Lots* are available for inspection prior to the *Sale* and it is for you to satisfy yourself as to each and every aspect of a *Lot*, including its authorship, attribution, condition, provenance, history, background, authenticity, style, period, age, suitability, quality, roadworthiness (if relevant), origin, value and estimated selling price (including the *Hammer Price*). It is your responsibility to examine any *Lot* in which you are interested. It should be remembered that the actual condition of a *Lot* may not be as good as that indicated by its outward appearance. In particular, parts may have been replaced or renewed and *Lots* may not be authentic or of satisfactory quality; the inside of a *Lot* may not be visible and may not be original or may be damaged, as for example where it is covered by upholstery or material. Given the age of many *Lots* they may have been damaged and/or repaired and you should not assume that a *Lot* is in good condition. Electronic or mechanical items or parts are sold for their artistic, historic or cultural interest and may not operate or may not comply with current statutory requirements. You should not assume that electrical items designed to operate on mains electricity will be suitable for connection to the mains electricity supply and you should obtain a report from a qualified electrician on their status before doing so. Such items which are unsuitable for connection are sold as items of interest for display purposes only. If you yourself do not have expertise regarding a *Lot*, you should consult someone who does to advise you. We can assist in arranging facilities for you to carry out or have carried out more detailed inspections and tests. Please ask our staff for details. Any person who damages a *Lot* will be held liable for the loss caused.

### 3. DESCRIPTIONS OF LOTS AND ESTIMATES

#### *Contractual Description of a Lot*

The *Catalogue* contains an *Entry* about each *Lot*. Each *Lot* is sold by its respective *Seller* to the *Buyer* of the *Lot* as corresponding only with that part of the *Entry* which is printed in bold letters and (except for the colour, which may be inaccurately reproduced) with any photograph of the *Lot* in the *Catalogue*. The remainder of the *Entry*, which is not printed in bold letters, represents *Bonhams'* opinion (given on behalf of the *Seller*) about the *Lot* only and is not part of the *Contractual Description* in accordance with which the *Lot* is sold by the *Seller*.

#### *Estimates*

In most cases, an Estimate is printed beside the *Entry*. *Estimates* are only an expression of *Bonhams'* opinion made on behalf of the *Seller* of the range where *Bonhams* thinks the *Hammer Price* for the *Lot* is likely to fall; it is not an *Estimate* of value. It does not take into account any VAT or *Buyer's Premium* payable or any other fees payable by the *Buyer*, which are detailed in paragraph 7 of the *Notice to Bidders*, below. Prices depend upon bidding and lots can sell for *Hammer*

*Prices* below and above the *Estimates*, so *Estimates* should not be relied on as an indication of the actual selling price or value of a *Lot*. *Estimates* are in the currency of the *Sale*.

#### *Condition Reports*

In respect of most *Lots*, you may ask *Bonhams* for a *Condition Report* on the *Lot's* general physical condition. If you do so, this will be provided by *Bonhams* on behalf of the *Seller* free of charge. As this is offered additionally and without charge, *Bonhams* is not entering into a contract with you in respect of the *Condition Report* and accordingly does not assume responsibility to you in respect of it. The *Condition Report* represents *Bonhams'* reasonable opinion as to the *Lot's* general condition in the terms stated in the particular report, and *Bonhams* does not represent or guarantee that a *Condition Report* includes all aspects of the internal or external condition of the *Lot*. Neither does the *Seller* owe or agree to owe you as a *Bidder* or *Buyer* any obligation or duty in respect of this free report about a *Lot*, which is available for your own inspection or for inspection by an expert instructed by you.

#### *The Seller's responsibility to you*

The *Seller* does not make or agree to make any representation of fact or contractual promise, *Guarantee* or warranty and undertakes no obligation or duty, whether in contract or in tort (other than to the eventual *Buyer* as set out above), in respect of the accuracy or completeness of any statement or representation made by him or on his behalf, which is in any way descriptive of any *Lot* or as to the anticipated or likely selling price of any *Lot*. Other than as set out above, no statement or representation in any way descriptive of a *Lot* or any *Estimate* is incorporated into any *Contract for Sale* between a *Seller* and a *Buyer*.

#### *Bonhams' responsibility to you*

You have the opportunity of examining the *Lot* if you want to and the *Contract for Sale* for a *Lot* is with the *Seller* and not with *Bonhams*; *Bonhams* acts as the *Seller's* agent only (unless *Bonhams* sells the *Lot* as principal).

*Bonhams* undertakes no obligation to you to examine, investigate or carry out any tests, either in sufficient depth or at all, on each *Lot* to establish the accuracy or otherwise of any *Descriptions* or opinions given by *Bonhams*, or by any person on *Bonhams'* behalf, whether in the *Catalogue* or elsewhere.

You should not suppose that such examinations, investigations or tests have occurred.

*Bonhams* does not make or agree to make any representation of fact, and undertakes no obligation or duty (whether in contract or tort) in respect of the accuracy or completeness of any statement or representation made by *Bonhams* or on *Bonhams'* behalf which is in any way descriptive of any *Lot* or as to the anticipated or likely selling price of any *Lot*. No statement or representation by *Bonhams* or on its behalf in any way descriptive of any *Lot* or any *Estimate* is incorporated into our *Buyer's Agreement*.

#### *Alterations*

*Descriptions* and *Estimates* may be amended at *Bonhams'* discretion from time to time by notice given orally or in writing before or during a *Sale*.

THE LOT IS AVAILABLE FOR INSPECTION AND YOU MUST FORM YOUR OWN OPINION IN RELATION TO IT. YOU ARE STRONGLY ADVISED TO EXAMINE ANY LOT OR HAVE IT EXAMINED ON YOUR BEHALF BEFORE THE SALE.

#### 4. CONDUCT OF THE SALE

Our *Sales* are public auctions which persons may attend and you should take the opportunity to do so. We reserve the right at our sole discretion to refuse admission to our premises or to any *Sale* and to remove any person from our premises and *Sales*, without stating a reason. We have complete discretion as to whether the *Sale* proceeds, whether any *Lot* is included in the *Sale*, the manner in which the *Sale* is conducted and we may offer *Lots* for *Sale* in any order we choose notwithstanding the numbers given to *Lots* in the *Catalogue*. You should therefore check the date and starting time of the *Sale*, whether there have been any withdrawals or late entries. Remember that withdrawals and late entries may affect the time at which a *Lot* you are interested is put up for *Sale*. We have complete discretion in which to refuse any bid, to nominate any bidding increment we consider appropriate, to divide any *Lot*, to combine two or more *Lots*, to withdraw any *Lot* from a *Sale* and, before the *Sale* has been closed, to put up any *Lot* for auction again. Auction speeds can exceed 100 *Lots* to the hour and bidding increments are generally about 10%; however, these do vary from *Sale* to *Sale* and from *Auctioneer* to *Auctioneer*. Please check with the department organising the *Sale* for advice on this. Where a *Reserve* has been applied to a *Lot*, the *Auctioneer* may, in his absolute discretion, place bids (up to an amount not equaling or exceeding such *Reserve*) on behalf of the *Seller*. We are not responsible to you in respect of the presence or absence of any *Reserve* in respect of any *Lot*. If there is a *Reserve* it will be no higher than the lower figure for any *Estimate* in the *Catalogue*, assuming that the currency of the *Reserve* has not fluctuated adversely against the currency of the *Estimate*. The *Buyer* will be the *Bidder* who makes the highest bid acceptable to the *Auctioneer* for any *Lot* (subject to any applicable *Reserve*) to whom the *Lot* is knocked down by the *Auctioneer* at the fall of the *Auctioneer's* hammer. Any dispute as to the highest acceptable bid will be settled by the *Auctioneer* in his absolute discretion. All bids tendered will relate to the actual *Lot* number announced by the *Auctioneer*. An electronic currency converter may be used at the *Sale*. This equipment is provided as a general guide as to the equivalent amount in certain currencies of a given bid. We do not accept any responsibility for any errors which may occur in the use of the currency converter. We may use video cameras to record the *Sale* and may record telephone calls for reasons of security and to assist in

solving any disputes which may arise in relation to bids made at the *Sale*. At some *Sales*, for example, jewellery *Sales*, we may use screens on which images of the *Lots* will be projected. This service is provided to assist viewing at the *Sale*. The image on the screen should be treated as an indication only of the current *Lot*. It should be noted that all bids tendered will relate to the actual *Lot* number announced by the *Auctioneer*. We do not accept any responsibility for any errors which may occur in the use of the screen.

#### 5. BIDDING

You must complete and deliver to us one of our *Bidding Forms*, either our *Bidder Registration Form*, *Absentee Bidding Form* or *Telephone Bidding Form* in order to bid at our *Sales*.

If you are a new client at *Bonhams* or have not recently updated your registration details with us, you must pre-register to bid at least two working days before the *Sale* at which you wish to bid. You will be required to provide government-issued proof of identity and residence, and if you are a company, your certificate of incorporation or equivalent documentation with your name and registered address, government issued proof of your current address, documentary proof of your beneficial owners and directors, and proof of authority to transact. We may also request a financial reference and /or deposit from you before allowing you to bid.

We reserve the rights at our discretion to request further information in order to complete our client identification and to decline to register any person as a *Bidder*, and to decline to accept their bids if they have been so registered. We also reserve the rights to postpone completion of the *Sale* of any *Lot* at our discretion while we complete our registration and identification enquiries, and to cancel the *Sale* of any *Lot* if you are in breach of your warranties as *Buyer*, or if we consider that such *Sale* would be unlawful or otherwise cause liabilities for the *Seller* or *Bonhams* or be detrimental to *Bonhams'* reputation.

#### *Bidding in person*

So long as you have pre-registered to bid or have updated your existing registration recently, you should come to our *Bidder* registration desk at the *Sale* venue and fill out a Registration and Bidding Form on (or, if possible, before) the day of the *Sale*. The bidding number system is sometimes referred to as "paddle bidding". You will be issued with a large card (a "paddle") with a printed number on it. This will be attributed to you for the purposes of the *Sale*. Should you be a successful *Bidder* you will need to ensure that your number can be clearly seen by the *Auctioneer* and that it is your number which is identified as the *Buyer's*. You should not let anyone else use your paddle as all *Lots* will be invoiced to the name and address given on your *Bidder* Registration Form. Once an invoice is issued it will not be changed. If there is any doubt as to the *Hammer Price* of, or whether you are the successful *Bidder* of, a particular *Lot*, you must draw this to the attention of the *Auctioneer* before the next *Lot* is offered for *Sale*. At the end of the *Sale*, or when you have finished bidding please return your paddle to the *Bidder* registration desk.

#### *Bidding by telephone*

If you wish to bid at the *Sale* by telephone, and have pre-registered to bid or have updated your existing registration details recently, please complete a Registration and Bidding Form, which is available from our offices or in the *Catalogue*. Please then return it to the office responsible for the *Sale* at least 24 hours in advance of the *Sale*. It is your responsibility to check with our Bids Office that your bid has been received. Telephone calls will be recorded. The telephone bidding facility is a discretionary service offered at no additional charge and may not be available in relation to all *Lots*. We will not be responsible for bidding on your behalf if you are unavailable at the time of the *Sale* or if the telephone connection is interrupted during bidding. Please contact us for further details.

#### *Bidding by post or fax*

*Absentee Bidding Forms* can be found in the back of this *Catalogue* and should be completed and sent to the office responsible for the *Sale*, once you have pre-registered to bid or have updated your existing registration details recently. It is in your interests to return your form as soon as possible, as if two or more *Bidders* submit identical bids for a *Lot*, the first bid received takes preference. In any event, all bids should be received at least 24 hours before the start of the *Sale*. Please check your *Absentee Bidding Form* carefully before returning it to us, fully completed and signed by you. It is your responsibility to check with our Bids Office that your bid has been received. This additional service is complimentary and is confidential. Such bids are made at your own risk and we cannot accept liability for our failure to receive and/or place any such bids. All bids made on your behalf will be made at the lowest level possible subject to *Reserves* and other bids made for the *Lot*. Where appropriate your bids will be rounded down to the nearest amount consistent with the *Auctioneer's* bidding increments. New *Bidders* must also provide proof of identity and address when submitting bids. Failure to do this will result in your bid not being placed.

#### *Bidding via the internet*

Please visit our *Website* at <http://www.bonhams.com> for details of how to bid via the internet.

*Bonhams* will not be liable for service delays, interruptions or other failures to make a bid caused by losses of internet connection, fault or failure with the website or bidding process, or malfunction of any software or system, computer or mobile device.

#### *Bidding through an agent*

Bids will be treated as placed exclusively by and on behalf of the person named on the *Bidding Form* unless otherwise agreed by us in writing in advance of the *Sale*. If you wish to bid on behalf of another person (your principal) you must complete the pre-registration requirements set out above both on your own behalf and with full

details of your principal, and we will require written confirmation from the principal confirming your authority to bid.

**You are specifically referred to your due diligence requirements concerning your principal and their source of funds, and the warranties you give in the event you are the Buyer, which are contained in paragraph 3 of the Buyer's Agreement, set out at Appendix 2 at the back of the Catalogue.**

Nevertheless, as the *Bidding Form* explains, any person placing a bid as agent on behalf of another (whether or not he has disclosed that fact) will be jointly and severally liable with the principal to the Seller and to Bonhams under any contract resulting from the acceptance of a bid. Equally, please let us know if you intend to nominate another person to bid on your behalf at the Sale unless this is to be carried out by us pursuant to a Telephone or Absentee *Bidding Form* that you have completed. If we do not approve the agency arrangements in writing before the Sale, we are entitled to assume that the person bidding at the Sale is bidding on his own behalf. Accordingly, the person bidding at the Sale will be the Buyer and will be liable to pay the *Hammer Price* and Buyer's Premium and associated charges. If we approve the identity of your client in advance, we will be in a position to address the invoice to your principal rather than you. We will require proof of the agent's client's identity and residence in advance of any bids made by the agent on his behalf. Please refer to our *Conditions of Business* and contact our Customer Services Department for further details.

Bonhams undertakes Customer Due Diligence (CDD) into its Sellers and Buyers as required by the Money Laundering, Terrorist Financing and Transfer of Funds (Information on the Payer) Regulations 2017 ("the Regulations"). Bonhams' interpretation of the Regulations and Treasury Approved industry Guidance is that CDD under the Regulations is not required by Buyers into Sellers at Bonhams auctions or vice versa.

**6. CONTRACTS BETWEEN THE BUYER AND SELLER AND THE BUYER AND BONHAMS**

On the Lot being knocked down to the Buyer, a *Contract for Sale* of the Lot will be entered into between the Seller and the Buyer on the terms of the *Contract for Sale* set out in Appendix 1 at the back of the Catalogue. You will be liable to pay the *Purchase Price*, which is the *Hammer Price* plus any applicable VAT. At the same time, a separate contract is also entered into between us as Auctioneers and the Buyer. This is our *Buyer's Agreement*, the terms of which are set out in Appendix 2 at the back of the Catalogue. Please read the terms of the *Contract for Sale* and our *Buyer's Agreement* contained in the Catalogue in case you are the successful Bidder including the warranties as to your status and source of funds. We may change the terms of either or both of these agreements in advance of their being entered into, by setting out different terms in the Catalogue and/or by placing an insert in the Catalogue and/or by notices at the Sale venue and/or by oral announcements before and during the Sale. It is your responsibility to ensure you are aware of the up to date terms of the *Buyer's Agreement* for this Sale.

**7. BUYER'S PREMIUM AND OTHER CHARGES PAYABLE BY THE BUYER**

Under the *Buyer's Agreement*, a premium (the *Buyer's Premium*) is payable to us by the Buyer in accordance with the terms of the *Buyer's Agreement* and at rates set out below, calculated by reference to the *Hammer Price* and payable in addition to it.

For this Sale the following rates of *Buyer's Premium* will be payable by Buyers on each Lot purchased:

27.5% up to £2,500 of the *Hammer Price*  
25% of the *Hammer Price* above £2,500 and up to £300,000  
20% of the *Hammer Price* above £300,000 and up to £3,000,000  
13.9% of the *Hammer Price* above £3,000,000

Storage and handling charges may also be payable by the Buyer as detailed on the specific Sale Information page at the front of the catalogue.

The *Buyer's Premium* and all other charges payable to us by the Buyer are subject to VAT at the prevailing rate, currently 20%.

VAT may also be payable on the *Hammer Price* of the Lot, where indicated by a symbol beside the Lot number. See paragraph 8 below for details.

On certain Lots, which will be marked "AR" in the Catalogue and which are sold for a *Hammer Price* of £1,000 or greater (converted into the currency of the Sale using the European Central Bank Reference rate prevailing on the date of the Sale), the *Additional Premium* will be payable to us by the Buyer to cover our Expenses relating to the payment of royalties under the Artists Resale Right Regulations 2006. The *Additional Premium* will be a percentage of the amount of the *Hammer Price* calculated in accordance with the table below, and shall not exceed £12,500 (converted into the currency of the Sale using the European Central Bank Reference rate prevailing on the date of the Sale).

Hammer Price	Percentage amount
From €0 to €50,000	4%
From €50,000.01 to €200,000	3%
From €200,000.01 to €350,000	1%
From €350,000.01 to €500,000	0.5%
Exceeding €500,000	0.25%

**8. VAT**

The prevailing rate of VAT at the time of going to press is 20%, but this is subject to government change and the rate payable will be the rate in force on the date of the Sale.

The following symbols, shown beside the Lot number, are used to denote that VAT is due on the *Hammer Price* and *Buyer's Premium*:

- † VAT at the prevailing rate on *Hammer Price* and *Buyer's Premium*
- Ω VAT on imported items at the prevailing rate on *Hammer Price* and *Buyer's Premium*
- \* VAT on imported items at a preferential rate of 5% on *Hammer Price* and the prevailing rate on *Buyer's Premium*
- G Gold bullion exempt from VAT on the *Hammer Price* and subject to VAT at the prevailing rate on the *Buyer's Premium*
- Zero rated for VAT, no VAT will be added to the *Hammer Price* or the *Buyer's Premium*
- α Buyers from within the EU: VAT is payable at the prevailing rate on just the *Buyer's Premium* (NOT the *Hammer Price*). Buyers from outside the EU: VAT is payable at the prevailing rate on both *Hammer Price* and *Buyer's Premium*. If a Buyer, having registered under a non-EU address, decides that the item is not to be exported from the EU, then he should advise Bonhams immediately.

In all other instances no VAT will be charged on the *Hammer Price*, but VAT at the prevailing rate will be added to *Buyer's Premium* which will be invoiced on a VAT inclusive basis.

**9. PAYMENT**

It is of critical importance that you ensure that you have readily available funds to pay the *Purchase Price* and the *Buyer's Premium* (plus VAT and any other charges and Expenses to us) in full before making a bid for the Lot. If you are a successful Bidder, payment will be due to us by 4.30 pm on the second working day after the Sale so that all sums are cleared by the eighth working day after the Sale. Payments made by anyone other than the registered Buyer will not be accepted. Bonhams reserves the right to vary the terms of payment at any time.

**Bonhams' preferred payment method is by bank transfer.**

You may electronically transfer funds to our *Account*. If you do so, please quote your padlock number and invoice number as the reference. Our *Account* details are as follows:

Bank: National Westminster Bank Plc  
Address: PO Box 4RY  
250 Regent Street  
London W1A 4RY  
Account Name: Bonhams 1793 Limited  
Account Number: 25563009  
Sort Code: 56-00-27  
IBAN Number: GB 33 NWBK 560027 25563009

If paying by bank transfer, the amount received after the deduction of any bank fees and/or conversion of the currency of payment to pounds sterling must not be less than the sterling amount payable, as set out on the invoice.

Payment may also be made by one of the following methods:

**Sterling personal cheque drawn on a UK branch of a bank or building society:** all cheques must be cleared before you can collect your purchases and should be made payable to Bonhams 1793 Limited.

**Cash:** you may pay for Lots purchased by you at this Sale with notes or coins in the currency in which the Sale is conducted (but not any other currency) provided that the total amount payable by you in respect of all Lots purchased by you at the Sale does not exceed £3,000, or the equivalent in the currency in which the Sale is conducted, at the time when payment is made. If the amount payable by you for Lots exceeds that sum, the balance must be paid otherwise than in coins or notes; this limit applies to both payment at our premises and direct deposit into our bank account.

**Debit cards issued in the name of the Buyer (including China Union Pay (CUP) cards and debit cards issued by Visa and MasterCard only).** There is no limit on payment value if payment is made in person using Chip & Pin verification.

**Payment by telephone** may also be accepted up to £5,000, subject to appropriate verification procedures, although this facility is not available for first time buyers. If the amount payable by you for Lots exceeds that sum, the balance must be paid by other means.

**Credit cards issued in the name of the Buyer (including China Union Pay (CUP) cards and credit cards issued by Visa and MasterCard only).** There is a £5,000 limit on payment value if payment is made in person using Chip & Pin verification.

It may be advisable to notify your debit or credit card provider of your intended purchase in advance to reduce delays caused by us having to seek authority when you come to pay.

**Note: only one debit or credit card may be used for payment of an account balance.** If you have any questions with regards to card payments, please contact our Customer Services Department. We reserve the rights to investigate and identify the source of any funds received by us, to postpone completion of the sale of any Lot at our discretion while we complete our investigations, and to cancel the

*Sale* of any Lot if you are in breach of your warranties as Buyer, if we consider that such Sale would be unlawful or otherwise cause liabilities for the Seller or Bonhams, or would be detrimental to Bonhams' reputation.

**10. COLLECTION AND STORAGE**

The Buyer of a Lot will not be allowed to collect it until payment in full and in cleared funds has been made (unless we have made a special arrangement with the Buyer). For collection and removal of purchased Lots, please refer to Sale Information at the front of the Catalogue. Our offices are open 9.00am – 5pm Monday to Friday. Details relating to the collection of a Lot, the storage of a Lot and our Storage Contractor after the Sale are set out in the Catalogue.

**11. SHIPPING**

For information and estimates on domestic and international shipping as well as export licenses please contact Alban Shipping on +44 (0) 1582 493 099 enquiries@albanshipping.co.uk

**12. EXPORT/TRADE RESTRICTIONS**

It is your sole responsibility to comply with all export and import regulations relating to your purchases and also to obtain any relevant export and/or import licence(s). Export licences are issued by Arts Council England and application forms can be obtained from its Export Licensing Unit. The detailed provisions of the export licensing arrangements can be found on the ACE website <http://www.artscouncil.org.uk/what-we-do/supporting-museums/cultural-property/export-controls/export-licensing/> or by phoning ACE on +44 (0)20 7973 5188. The need for import licences varies from country to country and you should acquaint yourself with all relevant local requirements and provisions. The refusal of any import or export licence(s) or any delay in obtaining such licence(s) shall not permit the rescission of any Sale nor allow any delay in making full payment for the Lot. Generally, please contact our shipping department before the Sale if you require assistance in relation to export regulations.

**13. CITES REGULATIONS**

Please be aware that all Lots marked with the symbol Y are subject to CITES regulations when exporting these items outside the EU. These regulations may be found at <http://www.defra.gov.uk/ahvla-en/imports-exports/cites/> or may be requested from:

Animal Health and Veterinary Laboratories Agency (AHVLA) Wildlife Licensing  
Floor 1, Zone 17, Temple Quay House  
2 The Square, Temple Quay  
BRISTOL BS1 6EB  
Tel: +44 (0) 117 372 8774

The refusal of any CITES licence or permit and any delay in obtaining such licences or permits shall not give rise to the rescission or cancellation of any Sale, nor allow any delay in making full payment for the Lot.

**14. THE SELLERS AND/OR BONHAMS' LIABILITY**

Other than any liability of the Seller to the Buyer of a Lot under the *Contract for Sale*, neither we nor the Seller are liable (whether in negligence or otherwise) for any error or misdescription or omission in any Description of a Lot or any Estimate in respect of it, whether contained in the Catalogue or otherwise, whether given orally or in writing and whether given before or during the Sale. Neither we nor the Seller will be liable for any loss of Business, profits, revenue or income, or for loss of reputation, or for disruption to Business or wasted time on the part of management or staff, or for indirect losses or consequential damages of any kind, irrespective in any case of the nature, volume or source of the loss or damage alleged to be suffered, and irrespective of whether the said loss or damage is caused by or claimed in respect of any negligence, other tort, breach of contract (if any) or statutory duty, restitutionary claim or otherwise. In any circumstances where we and/or the Seller are liable in relation to any Lot or any Description or Estimate made of any Lot, or the conduct of any Sale in relation to any Lot, whether in damages, for an indemnity or contribution, or for a restitutionary remedy or otherwise, our and/or the Seller's liability (combined, if both we and the Seller are liable) will be limited to payment of a sum which will not exceed by way of maximum the amount of the *Purchase Price* of the Lot irrespective in any case of the nature, volume or source of any loss or damage alleged to be suffered or sum claimed as due, and irrespective of whether the liability arises from any negligence, other tort, breach of contract (if any) or statutory duty or otherwise. Nothing set out above will be construed as excluding or restricting (whether directly or indirectly) our liability or excluding or restricting any person's rights or remedies in respect of (i) fraud, or (ii) death or personal injury caused by our negligence (or by the negligence of any person under our control or for whom we are legally responsible), or (iii) acts or omissions for which we are liable under the Occupiers Liability Act 1957, or (iv) any other liability to the extent the same may not be excluded or restricted as a matter of law or (v) our undertakings under paragraphs 9 (in relation to specialist Stamp or Book Sales only) and 10 of the *Buyer's Agreement*. The same applies in respect of the Seller, as if references to us in this paragraph were substituted with references to the Seller.

**15. BOOKS**

As stated above, all Lots are sold on an "as is" basis, subject to all faults, imperfections and errors of Description save as set out below. However, you will be entitled to reject a Book in the circumstances set out in paragraph 11 of the *Buyers Agreement*. Please note that Lots comprising printed Books, unframed maps and bound manuscripts are not liable to VAT on the Buyer's Premium.

**16. CLOCKS AND WATCHES**

All Lots are sold "as is", and the absence of any reference to the condition of a clock or watch does not imply that the Lot is in good



condition and without defects, repairs or restorations. Most clocks and watches have been repaired in the course of their normal lifetime and may now incorporate parts not original to them. Furthermore, *Bonhams* makes no representation or warranty that any clock or watch is in working order. As clocks and watches often contain fine and complex mechanisms, *Bidders* should be aware that a general service, change of battery or further repair work, for which the *Buyer* is solely responsible, may be necessary.

#### 17. FIREARMS – PROOF, CONDITION AND CERTIFICATION Proof of Firearms

The term "proof exemption" indicates that a firearm has been examined at a Proof House, but not proved, as either (a) it was deemed of interest and not intended for use, or (b) ammunition was not available. In either case, the firearm must be regarded as unsafe to fire unless subsequently proved. Firearms proved for Black Powder should not be used with smokeless ammunition.

The term "Certificate of Unprovability" indicates that a firearm has been examined at a Proof House and is deemed both unsuitable for proof and use. Reproof is required before any such firearm is to be used.

#### Guns Sold as Parts

Barrels of guns sold as parts will only be made available for sleeving and measurements once rendered unserviceable according to the Gun Barrel Proof Act of 1968 to 1978 and the Rules of Proof.

#### Condition of Firearms

Comment in this *Catalogue* is restricted, in general, to exceptional condition and to those defects that might affect the immediate safety of a firearm in normal use. An intending *Bidder* unable to make technical examinations and assessments is recommended to seek advice from a gunmaker or from a modern firearms specialist. All prospective *Bidders* are advised to consult the - of bore and wall-thickness measurements posted in the saleroom and available from the department. *Bidders* should note that guns are stripped only where there is a strong indication of a mechanical malfunction. Stripping is not, otherwise, undertaken. Guns intended for use should be stripped and cleaned beforehand. Hammer guns should have their rebound mechanisms checked before use. The safety mechanisms of all guns must be tested before use. All measurements are approximate.

#### Original Gun Specifications Derived from Gunmakers

The Sporting Gun Department endeavours to confirm a gun's original specification and date of manufacture with makers who hold their original records.

#### Licensing Requirements

##### Firearms Act 1968 as amended

*Bonhams* is constantly reviewing its procedures and would remind you that, in the case of firearms or shotguns subject to certification, to conform with current legislation, *Bonhams* is required to see, as appropriate, your original registered firearms dealer's certificate / shot gun certificate / firearm certificate / museum firearms licence / Section 5 authority or import licence (or details of any exemption from which you may benefit, for instance Crown servant status) for the firearm(s) you have purchased prior to taking full payment of the amount shown on your invoice. Should you not already be in possession of such an authority or exemption, you are required to initially pay a deposit of 95% of the total invoice with the balance of 5% payable on presentation of your valid certificate or licence showing your authority to hold the firearm(s) concerned.

Please be advised that if a successful *Bidder* is then unable to produce the correct paperwork, the *Lot(s)* will be reoffered by *Bonhams* in the next appropriate *Sale*, on standard terms for *Sellers*, and you will be responsible for any loss incurred by *Bonhams* on the original *Sale* to you.

In the case of RFD certificates and Section 5 authorities, we wish to keep an up-to-date copy on file. Please supply us with a Fax or photocopy. It would be helpful if you could send us an updated copy whenever your certificate or authority is renewed or changed.

*Lots* marked 'S1' and bearing red labels are Section 1 firearms and require a valid British Firearms certificate, RFD Licence or import licence.

*Lots* marked 'S2' and bearing blue labels are Section 2 firearms and require a valid British Shotgun certificate, RFD licence or import licence. *Lots* marked 'S5' and bearing specially marked red labels are Section 5 prohibited firearms and require a valid Section 5 Authority or import licence.

*Lots* marked with a 'S58' and bearing yellow labels are for obsolete calibres and no licence is required unless ammunition is held.

Unmarked *Lots* require no licence.

Please do not hesitate to contact the Modern Sporting Gun Department should you have any queries.

#### Taxidermy and Related Items

On behalf of the *Seller* of these articles, *Bonhams* undertakes to comply fully with Cites and DEFFRA regulations. *Buyers* are advised to inform themselves of all such regulations and should expect the exportation of items to take some time to arrange.

#### 18. FURNITURE

##### Upholstered Furniture

Whilst we take every care in cataloguing furniture which has been upholstered we offer no *Guarantee* as to the originality of the wood covered by fabric or upholstery.

#### 19. JEWELLERY

##### Gemstones

Historically many gemstones have been subjected to a variety of treatments to enhance their appearance. Sapphires and rubies are routinely heat treated to improve their colour and clarity, similarly emeralds are frequently treated with oils or resin for the same purpose. Other treatments such as staining, irradiation or coating may have been used on other gemstones. These treatments may be permanent, whilst others may need special care or re-treatment over the years

to retain their appearance. *Bidders* should be aware that *Estimates* assume that gemstones may have been subjected to such treatments. A number of laboratories issue certificates that give more detailed *Descriptions* of gemstones. However there may not be consensus between different laboratories on the degrees, or types of treatment for any particular gemstone. In the event that *Bonhams* has been given or has obtained certificates for any *Lot* in the *Sale* these certificates will be disclosed in the *Catalogue*. Although, as a matter of policy, *Bonhams* endeavours to provide certificates from recognised laboratories for certain gemstones, it is not feasible to obtain certificates for each *Lot*. In the event that no certificate is published in the *Catalogue*, *Bidders* should assume that the gemstones may have been treated. Neither *Bonhams* nor the *Seller* accepts any liability for contradictions or differing certificates obtained by *Buyers* on any *Lots* subsequent to the *Sale*.

#### Estimated Weights

If a stone(s) weight appears within the body of the *Description* in capital letters, the stone(s) has been unmounted and weighed by *Bonhams*. If the weight of the stone(s) is stated to be approximate and does not appear in capital letters, the stone(s) has been assessed by us within its/their settings, and the stated weight is a statement of our opinion only. This information is given as a guide and *Bidders* should satisfy themselves with regard to this information as to its accuracy.

#### Signatures

##### 1. A diamond brooch, by Kutchinsky

When the maker's name appears in the title, in *Bonhams'* opinion the piece is by that maker.

##### 2. A diamond brooch, signed Kutchinsky

Has a signature that, in *Bonhams'* opinion, is authentic but may contain gemstones that are not original, or the piece may have been altered.

##### 3. A diamond brooch, mounted by Kutchinsky

Has been created by the jeweller, in *Bonhams'* opinion, but using stones or designs supplied by the client.

#### 20. PHOTOGRAPHS

##### Explanation of Catalogue Terms

- "Bill Brandt": in our opinion a work by the artist.
- "Attributed to Bill Brandt": in our opinion probably a work by the artist, but less certainty to authorship is expressed than in the preceding category.
- "Signed and/or titled and/or dated and/or inscribed": in our opinion the signature and/or title and/or date and/or inscription are in the artist's hand.
- "Signed and/or titled and/or dated and/or inscribed in another hand": in our opinion the signature and/or title and/or date and/or inscription have been added by another hand.
- The date given is that of the image (negative). Where no further date is given, this indicates that the photographic print is vintage (the term "vintage" may also be included in the *Lot Description*). A vintage photograph is one which was made within approximately 5-10 years of the negative. Where a second, later date appears, this refers to the date of printing. Where the exact printing date is not known, but understood to be later, "printed later" will appear in the *Lot Description*.
- Unless otherwise specified, dimensions given are those of the piece of paper on which the image is printed, including any margins. Some photographs may appear in the *Catalogue* without margins illustrated.
- All photographs are sold unframed unless stated in the *Lot Description*.

#### 21. PICTURES

##### Explanation of Catalogue Terms

The following terms used in the *Catalogue* have the following meanings but are subject to the general provisions relating to *Descriptions* contained in the *Contract for Sale*:

- "Jacopo Bassano": in our opinion a work by the artist. When the artist's forename(s) is not known, a series of asterisks, followed by the surname of the artist, whether preceded by an initial or not, indicates that in our opinion the work is by the artist named;
- "Attributed to Jacopo Bassano": in our opinion probably a work by the artist but less certainty as to authorship is expressed than in the preceding category;
- "Studio/Workshop of Jacopo Bassano": in our opinion a work by an unknown hand in a studio of the artist which may or may not have been executed under the artist's direction;
- "Circle of Jacopo Bassano": in our opinion a work by a hand closely associated with a named artist but not necessarily his pupil;
- "Follower of Jacopo Bassano": in our opinion a work by a painter working in the artist's style, contemporary or nearly contemporary, but not necessarily his pupil;
- "Manner of Jacopo Bassano": in our opinion a work in the style of the artist and of a later date;
- "After Jacopo Bassano": in our opinion, a copy of a known work of the artist;
- "Signed and/or dated and/or inscribed": in our opinion the signature and/or date and/or inscription are from the hand of the artist;
- "Bears a signature and/or date and/or inscription": in our opinion the signature and/or date and/or inscription have been added by another hand.

#### 22. PORCELAIN AND GLASS

##### Damage and Restoration

For your guidance, in our *Catalogues* we attempt to detail, as far as practicable, all significant defects, cracks and restoration. Such practicable *Descriptions* of damage cannot be definitive, and in providing *Condition Reports*, we cannot *Guarantee* that there are no other defects present which have not been mentioned. *Bidders* should satisfy themselves by inspection, as to the condition of each *Lot*.

Please see the *Contract for Sale* printed in this *Catalogue*. Because of the difficulty in determining whether an item of glass has been repolished, in our *Catalogues* reference is only made to visible chips and cracks. No mention is made of repolishing, severe or otherwise.

#### 23. VEHICLES

##### The Veteran Car Club of Great Britain

##### Dating Plates and Certificates

When mention is made of a Veteran Car Club Dating Plate or Dating Certificate in this *Catalogue*, it should be borne in mind that the Veteran Car Club of Great Britain using the services of Veteran Car Company Ltd, does from time to time, review cars already dated and, in some instances, where fresh evidence becomes available, the review can result in an alteration of date. Whilst the Club and Veteran Car Company Ltd make every effort to ensure accuracy, the date shown on the Dating Plate or Dating Certificate cannot be guaranteed as correct and intending purchasers should make their own enquiries as to the date of the car.

#### 24. WINE

*Lots* which are lying under Bond and those liable to VAT may not be available for immediate collection.

#### Examining the wines

It is occasionally possible to provide a pre-*Sale* tasting for larger parcels (as defined below). This is generally limited to more recent and everyday drinking wines. Please contact the department for details. It is not our policy to inspect every unopened case. In the case of wines older than 20 years the boxes will usually have been opened and levels and appearance noted in the *Catalogue* where necessary. You should make proper allowance for variations in ullage levels and conditions of corks, capsules and labels.

#### Corks and Ullages

Ullage refers to the space between the base of the cork and the wine.

Ullage levels for Bordeaux shaped bottles are only normally noted when below the neck and for Burgundy, Alsace, German and Cognac shaped bottles when greater than 4 centimetres (cm). Acceptable ullage levels increase with age; generally acceptable levels are as follows:

Under 15 years old – into neck or less than 4cm

15 to 30 years old – top shoulder (ts) or up to 5cm

Over 30 years old – high shoulder (hs) or up to 6cm

It should be noted that ullages may change between publication of the *Catalogue* and the *Sale* and that corks may fail as a result of transporting the wine. We will only accept responsibility for *Descriptions* of condition at the time of publication of the *Catalogue* and cannot accept responsibility for any loss resulting from failure of corks either before or after this point.

#### Options to buy parcels

A parcel is a number of *Lots* of identical size of the same wine, bottle size and *Description*. The *Buyer* of any of these *Lots* has the option to accept some or all of the remaining *Lots* in the parcel at the same price, although such options will be at the *Auctioneer's* sole discretion. Absentee *Bidders* are, therefore, advised to bid on the first *Lot* in a parcel.

#### Wines in Bond

Wines lying in Bond are marked Δ. All *Lots* sold under Bond, and which the *Buyer* wishes to remain under Bond, will be invoiced without VAT or Duty on the *Hammer Price*. If the *Buyer* wishes to take the *Lot* as Duty paid, UK Excise Duty and VAT will be added to the *Hammer Price* on the invoice.

*Buyers* must notify *Bonhams* at the time of the *sale* whether they wish to take their wines under Bond or Duty paid. If a *Lot* is taken under Bond, the *Buyer* will be responsible for all VAT, Duty, clearance and other charges that may be payable thereon.

*Buyers* outside the UK must be aware that any forwarding agent appointed to export their purchases must have a movement certificate for *Lots* to be released under Bond.

#### Bottling Details and Case Terms

The following terms used in the *Catalogue* have the following meanings:

- CB – Château bottled
- DB – Domaine bottled
- EstB – Estate bottled
- BB – Bordeaux bottled
- BE – Belgian bottled
- FB – French bottled
- GB – German bottled
- OB – Oporto bottled
- UK – United Kingdom bottled
- owc – original wooden case
- iwc – individual wooden case
- oc – original carton

#### SYMBOLS

##### THE FOLLOWING SYMBOLS ARE USED TO DENOTE

- Y Subject to CITES regulations when exporting these items outside the EU, see clause 13.
- TP Objects displayed with a TP will be located at the Cadogan Tate warehouse and will only be available for collection from this location.
- W Objects displayed with a w will be located in the Bonhams Warehouse and will only be available for collection from this location.
- Δ Wines lying in Bond.
- AR An *Additional Premium* will be payable to us by the *Buyer* to cover our *Expenses* relating to payment of royalties under the Artists Resale Right Regulations 2006. See clause 7 for details.
- The *Seller* has been guaranteed a minimum price for the *Lot*, either by *Bonhams* or a third party. This may take the form of an irrevocable bid by a third party, who may make a financial gain on

a successful Sale or a financial loss if unsuccessful.

- ▲ *Bonhams* owns the *Lot* either wholly or partially or may otherwise have an economic interest.

- ⊕ This *Lot* contains or is made of ivory. The United States Government has banned the import of ivory into the USA.

\*, †, \*, G, Ω, α see clause 8, VAT, for details.

#### DATA PROTECTION – USE OF YOUR INFORMATION

Where we obtain any personal information about you, we shall only use it in accordance with the terms of our Privacy Policy (subject to any additional specific consent(s) you may have given at the time your information was disclosed). A copy of our Privacy Policy can be found on our Website [www.bonhams.com](http://www.bonhams.com) or requested by post from Customer Services Department, 101 New Bond Street, London, W1S 1SR or by email from [info@bonhams.com](mailto:info@bonhams.com)

#### APPENDIX 1

##### BUYERS SALE CONTRACT WITH SELLER

**IMPORTANT: These terms may be changed in advance of the Sale of the Lot to you, by the setting out of different terms in the Catalogue for the Sale and/or by placing an insert in the Catalogue and/or by notices at the Sale venue and/or on Bonhams' website, and/or by oral announcements before and during the Sale at the Sale venue. You should be alert to this possibility of changes and ask in advance of bidding if there have been any.**

**Under this contract the Seller's liability in respect of the quality of the Lot, it's fitness for any purpose and its conformity with any Description is limited. You are strongly advised to examine the Lot for yourself and/or obtain an independent examination of it before you buy it.**

#### 1 THE CONTRACT

- 1.1 These terms and the relevant terms for *Bidders* and *Buyers* in the *Notice to Bidders* govern the *Contract for Sale* of the *Lot* by the *Seller* to the *Buyer*.
- 1.2 The Definitions and Glossary contained in Appendix 3 in the *Catalogue* are incorporated into this *Contract for Sale* and a separate copy can also be provided by *Bonhams* on request. Where words and phrases are used which are in the List of Definitions, they are printed in italics.
- 1.3 The *Seller* sells the *Lot* as the principal to the *Contract for Sale*, such contract being made between the *Seller* and you through *Bonhams* which acts in the sole capacity as the *Seller's* agent and not as an additional principal. However, if the *Catalogue* states that *Bonhams* sells the *Lot* as principal, or such a statement is made by an announcement by the *Auctioneer*, or by a notice at the *Sale*, or an insert in the *Catalogue*, then *Bonhams* is the *Seller* for the purposes of this agreement.
- 1.4 The contract is made on the fall of the *Auctioneer's* hammer in respect of the *Lot* when it is knocked down to you.

#### 2 SELLER'S WARRANTIES AND UNDERTAKINGS

- 2.1 The *Seller* undertakes to you that:
- 2.1.1 the *Seller* is the owner of the *Lot* or is duly authorised to sell the *Lot* by the owner;
- 2.1.2 save as disclosed in the *Entry* for the *Lot* in the *Catalogue*, the *Seller* sells the *Lot* with full title guarantee or, where the *Seller* is an executor, trustee, liquidator, receiver or administrator, with whatever right, title or interest he may have in the *Lot*;
- 2.1.3 except where the *Sale* is by an executor, trustee, liquidator, receiver or administrator the *Seller* is both legally entitled to sell the *Lot*, and legally capable of conferring on you quiet possession of the *Lot* and that the *Sale* conforms in every respect with the terms implied by the Sale of Goods Act 1979, Sections 12(1) and 12(2) (see the Definitions and Glossary);
- 2.1.4 the *Seller* has complied with all requirements, legal or otherwise, relating to any export or import of the *Lot*, and all duties and taxes in respect of the export or import of the *Lot* have (unless stated to the contrary in the *Catalogue* or announced by the *Auctioneer*) been paid and, so far as the *Seller* is aware, all third parties have complied with such requirements in the past;
- 2.1.5 items consigned for sale by the *Seller* are not connected with or derived from any criminal activity, including without limitation tax evasion, money laundering, terrorist financing or breach of any applicable international trade sanctions;
- 2.1.6 subject to any alterations expressly identified as such made by announcement or notice at the *Sale* venue or by the *Notice to Bidders* or by an insert in the *Catalogue* or on the *Bonhams* website, the *Lot* corresponds with the *Contractual Description* of the *Lot*, being that part of the *Entry* about the *Lot* in the *Catalogue* which is in bold letters and (except for colour) with any photograph of the *Lot* in the *Catalogue*.

#### 3 DESCRIPTIONS OF THE LOT

- 3.1 Paragraph 2.1.5 sets out what is the *Contractual Description* of the *Lot*. In particular, the *Lot* is not sold as corresponding with any part of the *Entry* in the *Catalogue* which is not printed in bold letters, the remainder of which *Entry* merely sets out (on the *Seller's* behalf) *Bonhams'* opinion about the *Lot* and which is not part of the *Contractual Description* upon which the *Lot* is sold. Any statement or representation other than that part of the *Entry* referred to in paragraph 2.1.5 (together with any express alteration to it as referred to in paragraph 2.1.5), including any *Description* or *Estimate*, whether made orally or in writing, including in the *Catalogue* or on *Bonhams' Website*, or by conduct, or otherwise, and whether by or on behalf of the *Seller*

or *Bonhams* and whether made prior to or during the *Sale*, is not part of the *Contractual Description* upon which the *Lot* is sold.

3.2 Except as provided in paragraph 2.1.5, the *Seller* does not make or give and does not agree to make or give any contractual promise, undertaking, obligation, guarantee, warranty, or representation of fact, or undertake any duty of care, in relation to any *Description* of the *Lot* or any *Estimate* in relation to it, nor of the accuracy or completeness of any *Description* or *Estimate* which may have been *Bonhams*. No such *Description* or *Estimate* is incorporated into this *Contract for Sale*.

#### 4 FITNESS FOR PURPOSE AND SATISFACTORY QUALITY

- 4.1 The *Seller* does not make and does not agree to make any contractual promise, undertaking, obligation, guarantee, warranty, or representation of fact in relation to the satisfactory quality of the *Lot* or its fitness for any purpose.
- 4.2 The *Seller* will not be liable for any breach of any undertaking, whether implied by the Sale of Goods Act 1979 or otherwise, as to the satisfactory quality of the *Lot* or its fitness for any purpose.

#### 5 RISK, PROPERTY AND TITLE

- 5.1 Risk in the *Lot* passes to you after 7 days from the day upon which it is knocked down to you on the fall of the *Auctioneer's* hammer in respect of the *Lot*, or upon collection of the *Lot* if earlier. The *Seller* will not be responsible thereafter for the *Lot* prior to you collecting it from *Bonhams* or the *Storage Contractor*, with whom you have separate contract(s) as *Buyer*. You will indemnify the *Seller* and keep the *Seller* fully indemnified from and against all claims, proceedings, costs, expenses and losses arising in respect of any injury, loss and damage caused to the *Lot* beyond 7 days from the day of the fall of the *Auctioneer's* hammer until you obtain full title to it.
- 5.2 Title to the *Lot* remains in and is retained by the *Seller* until: (i) the *Purchase Price* and all other sums payable by you to *Bonhams* in relation to the *Lot* have been paid in full and received in cleared funds by *Bonhams*, and (ii) *Bonhams* has completed its investigations pursuant to clause 3.11 of the *Buyer's Agreement* with *Bonhams* set out in Appendix 2 in the catalogue.

#### 6 PAYMENT

- 6.1 Your obligation to pay the *Purchase Price* arises when the *Lot* is knocked down to you on the fall of the *Auctioneer's* hammer in respect of the *Lot*.
- 6.2 Time will be of the essence in relation to payment of the *Purchase Price* and all other sums payable by you to *Bonhams*. Unless agreed in writing with you by *Bonhams* on the *Seller's* behalf (in which case you must comply with the terms of that agreement), all such sums must be paid to *Bonhams* by you in the currency in which the *Sale* was conducted by not later than 4.30pm on the second working day following the *Sale* and you must ensure that the funds are cleared by the seventh working day after the *Sale*. Payment must be made to *Bonhams* by one of the methods stated in the *Notice to Bidders* unless otherwise agreed with you in writing by *Bonhams*. If you do not pay in full any sums due in accordance with this paragraph, the *Seller* will have the rights set out in paragraph 8 below.

#### 7 COLLECTION OF THE LOT

- 7.1 Unless otherwise agreed in writing with you by *Bonhams*, the *Lot* will be released to you or to your order only when: (i) *Bonhams* has received cleared funds to the amount of the full *Purchase Price* and all other sums owed by you to the *Seller* and to *Bonhams* and (ii) *Bonhams* has completed its investigations pursuant to clause 3.11 of the *Buyer's Agreement* with *Bonhams* set out in Appendix 2 in the catalogue.
- 7.2 The *Seller* is entitled to withhold possession from you of any other *Lot* he has sold to you at the same or at any other *Sale* and whether currently in *Bonhams'* possession or not, until payment in full and in cleared funds of the *Purchase Price* and all other sums due to the *Seller* and/or *Bonhams* in respect of the *Lot*.
- 7.3 You should note that *Bonhams* has reserved the right not to release the *Lot* to you until its investigations under paragraph 3.11 of the *Buyers' Agreement* set out in Appendix 2 have been completed to *Bonhams'* satisfaction.
- 7.4 You will collect and remove the *Lot* at your own expense from *Bonhams'* custody and/or control or from the *Storage Contractor's* custody in accordance with *Bonhams'* instructions or requirements.
- 7.5 You will be wholly responsible for packing, handling and transport of the *Lot* on collection and for complying with all import or export regulations in connection with the *Lot*.
- 7.6 You will be wholly responsible for any removal, storage or other charges or expenses incurred by the *Seller* if you do not remove the *Lot* in accordance with this paragraph 7 and will indemnify the *Seller* against all charges, costs, including any legal costs and fees, expenses and losses suffered by the *Seller* by reason of your failure to remove the *Lot* including any charges due under any *Storage Contract*. All such sums due to the *Seller* will be payable on demand.

#### 8 FAILURE TO PAY FOR THE LOT

- 8.1 If the *Purchase Price* for a *Lot* is not paid to *Bonhams* in full in accordance with the *Contract for Sale*, the *Seller* will be entitled, with the prior written agreement of *Bonhams* but without further notice to you, to exercise one or more of the following rights (whether through *Bonhams* or otherwise):
- 8.1.1 to terminate immediately the *Contract for Sale* of the *Lot* for your breach of contract;

- 8.1.2 to resell the *Lot* by auction, private treaty or any other means on giving seven days' written notice to you of the intention to resell;
- 8.1.3 to retain possession of the *Lot*;
- 8.1.4 to remove and store the *Lot* at your expense;
- 8.1.5 to take legal proceedings against you for any sum due under the *Contract for Sale* and/or damages for breach of contract;
- 8.1.6 to be paid interest on any monies due (after as well as before judgement or order) at the annual rate of 5% per annum above the base rate of National Westminster Bank Plc from time to time to be calculated on a daily basis from the date upon which such monies become payable until the date of actual payment;
- 8.1.7 to repossess the *Lot* (or any part thereof) which has not become your property, and for this purpose (unless the *Buyer* buys the *Lot* as a *Consumer* from the *Seller* selling in the course of a *Business*) you hereby grant an irrevocable licence to the *Seller* by himself and to his servants or agents to enter upon all or any of your premises (with or without vehicles) during normal *Business* hours to take possession of the *Lot* or part thereof;
- 8.1.8 to retain possession of any other property sold to you by the *Seller* at the *Sale* or any other auction or by private treaty until all sums due under the *Contract for Sale* shall have been paid in full in cleared funds;
- 8.1.9 to retain possession of, and on three months' written notice to sell, *Without Reserve*, any of your other property in the possession of the *Seller* and/or of *Bonhams* (as bailee for the *Seller*) for any purpose (including, without limitation, other goods sold to you) and to apply any monies due to you as a result of such *Sale* in satisfaction or part satisfaction of any amounts owed to the *Seller* or to *Bonhams*; and
- 8.1.10 so long as such goods remain in the possession of the *Seller* or *Bonhams* as its bailee, to rescind the contract for the *Sale* of any other goods sold to you by the *Seller* at the *Sale* or at any other auction or by private treaty and apply any monies received from you in respect of such goods in part or full satisfaction of any amounts owed to the *Seller* or to *Bonhams* by you.
- 8.2 You agree to indemnify the *Seller* against all legal and other costs of enforcement, all losses and other expenses and costs (including any monies payable to *Bonhams* in order to obtain the release of the *Lot*) incurred by the *Seller* (whether or not court proceedings will have been issued) as a result of *Bonhams* taking steps under this paragraph 8 on a full indemnity basis together with interest thereon (after as well as before judgement or order) at the rate specified in paragraph 8.1.6 from the date upon which the *Seller* becomes liable to pay the same until payment by you.
- 8.3 On any resale of the *Lot* under paragraph 8.1.2, the *Seller* will account to you in respect of any balance remaining from any monies received by him or on his behalf in respect of the *Lot*, after the payment of all sums due to the *Seller* and to *Bonhams*, within 28 days of receipt of such monies by him or on his behalf.

#### 9 THE SELLER'S LIABILITY

- 9.1 The *Seller* will not be liable for any injury, loss or damage caused by the *Lot* after the fall of the *Auctioneer's* hammer in respect of the *Lot*.
- 9.2 Subject to paragraph 9.3 below, except for breach of the express undertaking provided in paragraph 2.1.5, the *Seller* will not be liable for any breach of any term that the *Lot* will correspond with any *Description* applied to it by or on behalf of the *Seller*, whether implied by the Sale of Goods Act 1979 or otherwise.
- 9.3 Unless the *Seller* sells the *Lot* in the course of a *Business* and the *Buyer* buys it as a *Consumer*,
- 9.3.1 the *Seller* will not be liable (whether in negligence, other tort, breach of contract or statutory duty or in restitution or under the Misrepresentation Act 1967, or in any other way) for any lack of conformity with, or inaccuracy, error, misdescription or omission in any *Description* of the *Lot* or any *Entry* or *Estimate* in relation to the *Lot* made by or on behalf of the *Seller* (whether made in writing, including in the *Catalogue*, or on the *Website*, or orally, or by conduct or otherwise) and whether made before or after this agreement or prior to or during the *Sale*;
- 9.3.2 the *Seller* will not be liable for any loss of *Business*, *Business* profits or revenue or income or for loss of reputation or for disruption to *Business* or wasted time on the part of the *Buyer* or of the *Buyer's* management or staff or, for any indirect losses or consequential damages of any kind, irrespective in any case of the nature, volume or source of the loss or damage alleged to be suffered, and irrespective of whether the said loss or damage is caused by or claimed in respect of any negligence, other tort, breach of contract, statutory duty, restitutionary claim or otherwise;
- 9.3.3 in any circumstances where the *Seller* is liable to you in respect of the *Lot*, or any act, omission, statement, or representation in respect of it, or this agreement or its performance, and whether in damages, for an indemnity or contribution or for a restitutionary remedy or in any way whatsoever, the *Seller's* liability will be limited to payment of a sum which will not exceed by way of maximum the amount of the *Purchase Price* of the *Lot* irrespective in any case of the nature, volume or source of any loss or damage alleged to be suffered or sum claimed as due, and irrespective of whether the liability arises from any negligence, other tort, breach of contract, statutory duty, bailee's duty, restitutionary claim or otherwise.
- 9.4 Nothing set out in paragraphs 9.1 to 9.3 above will be construed as excluding or restricting (whether directly or indirectly) any person's liability or excluding or restricting any

- person's rights or remedies in respect of (i) fraud, or (ii) death or personal injury caused by the *Seller's* negligence (or any person under the *Seller's* control or for whom the *Seller* is legally responsible), or (iii) acts or omissions for which the *Seller* is liable under the Occupiers Liability Act 1957, or (iv) any other liability to the extent the same may not be excluded or restricted as a matter of law.
- 10 MISCELLANEOUS**
- 10.1 You may not assign either the benefit or burden of the *Contract for Sale*.
- 10.2 The *Seller's* failure or delay in enforcing or exercising any power or right under the *Contract for Sale* will not operate or be deemed to operate as a waiver of his rights under it except to the extent of any express waiver given to you in writing. Any such waiver will not affect the *Seller's* ability subsequently to enforce any right arising under the *Contract for Sale*.
- 10.3 If either party to the *Contract for Sale* is prevented from performing that party's respective obligations under the *Contract for Sale* by circumstances beyond its reasonable control or if performance of its obligations would by reason of such circumstances give rise to a significantly increased financial cost to it, that party will not, for so long as such circumstances prevail, be required to perform such obligations. This paragraph does not apply to the obligations imposed on you by paragraph 6.
- 10.4 Any notice or other communication to be given under the *Contract for Sale* must be in writing and may be delivered by hand or sent by first class post or air mail or fax transmission, if to the *Seller*, addressed c/o *Bonhams* at its address or fax number in the *Catalogue* (marked for the attention of the Company Secretary), and if to you to the address or fax number of the *Buyer* given in the *Bidding Form* (unless notice of any change of address is given in writing). It is the responsibility of the sender of the notice or communication to ensure that it is received in a legible form within any applicable time period.
- 10.5 If any term or any part of any term of the *Contract for Sale* is held to be unenforceable or invalid, such unenforceability or invalidity will not affect the enforceability and validity of the remaining terms or the remainder of the relevant term.
- 10.6 References in the *Contract for Sale* to *Bonhams* will, where appropriate, include reference to *Bonhams'* officers, employees and agents and to any subsidiary of *Bonhams Holdings Limited* and to its officers, employees and agents.
- 10.7 The headings used in the *Contract for Sale* are for convenience only and will not affect its interpretation.
- 10.8 In the *Contract for Sale* "including" means "including, without limitation".
- 10.9 References to the singular will include reference to the plural (and vice versa) and reference to any one gender will include reference to the other genders.
- 10.10 Reference to a numbered paragraph is to a paragraph of the *Contract for Sale*.
- 10.11 Save as expressly provided in paragraph 10.12 nothing in the *Contract for Sale* confers (or purports to confer) on any person who is not a party to the *Contract for Sale* any benefit conferred by, or the right to enforce any term of, the *Contract for Sale*.
- 10.12 Where the *Contract for Sale* confers an immunity from, and/or an exclusion or restriction of, the responsibility and/or liability of the *Seller*, it will also operate in favour and for the benefit of *Bonhams, Bonhams'* holding company and the subsidiaries of such holding company and the successors and assigns of *Bonhams* and of such companies and of any officer, employee and agent of *Bonhams* and such companies, each of whom will be entitled to rely on the relevant immunity and/or exclusion and/or restriction within and for the purposes of Contracts (Rights of Third Parties) Act 1999, which enables the benefit of a contract to be extended to a person who is not a party to the contract, and generally at law.
- 11 GOVERNING LAW**
- All transactions to which the *Contract for Sale* applies and all connected matters will be governed by and construed in accordance with the laws of that part of the United Kingdom where the *Sale* takes place and the *Seller* and you each submit to the exclusive jurisdiction of the courts of that part of the United Kingdom, save that the *Seller* may bring proceedings against you in any other court of competent jurisdiction to the extent permitted by the laws of the relevant jurisdiction. *Bonhams* has a complaints procedure in place.

## APPENDIX 2

### BUYER'S AGREEMENT WITH BONHAMS

**IMPORTANT:** These terms may be changed in advance of the *Sale* of the *Lot* to you, by the setting out of different terms in the *Catalogue* for the *Sale* and/or by placing an insert in the *Catalogue* and/or by notices at the *Sale* venue and/or by oral announcements before and during the *Sale* at the *Sale* venue. You should be alert to this possibility of changes and ask in advance of bidding if there have been any.

#### 1 THE CONTRACT

- 1.1 These terms govern the contract between *Bonhams* personally and the *Buyer*, being the person to whom a *Lot* has been knocked down by the *Auctioneer*.
- 1.2 The Definitions and Glossary contained in Appendix 3 to the *Catalogue* for the *Sale* are incorporated into this agreement and a separate copy can also be provided by us on request. Where words and phrases which are defined in the List of Definitions

- are used in this agreement, they are printed in *italics*. Reference is made in this agreement to information printed in the *Notice to Bidders*, printed in the *Catalogue* for the *Sale*, and where such information is referred to it is incorporated into this agreement.
- 1.3 Except as specified in paragraph 4 of the *Notice to Bidders* the *Contract for Sale* of the *Lot* between you and the *Seller* is made on the fall of the *Auctioneer's* hammer in respect of the *Lot*, when it is knocked down to you. At that moment a separate contract is also made between you and *Bonhams* on the terms in this *Buyer's Agreement*.
- 1.4 We act as agents for the *Seller* and are not answerable or personally responsible to you for any breach of contract or other default by the *Seller*, unless *Bonhams* sells the *Lot* as principal.
- 1.5 Our personal obligations to you are governed by this agreement and we agree, subject to the terms below, to the following obligations:
- 1.5.1 we will, until the date and time specified in the *Notice to Bidders* or otherwise notified to you, store the *Lot* in accordance with paragraph 5;
- 1.5.2 subject to any power of the *Seller* or us to refuse to release the *Lot* to you, we will release the *Lot* to you in accordance with paragraph 4 once you have paid to us, in cleared funds, everything due to us and the *Seller* and following completion of our enquiries pursuant to paragraph 3.11;
- 1.5.3 we will provide guarantees in the terms set out in paragraphs 9 and 10.
- 1.6 We do not make or give and do not agree to make or give any contractual promise, undertaking, obligation, *Guarantee*, warranty, representation of fact in relation to any *Description* of the *Lot* or any *Estimate* in relation to it, nor of the accuracy or completeness of any *Description* or *Estimate* which may have been made by us or on our behalf or by or on behalf of the *Seller* (whether made orally or in writing, including in the *Catalogue* or on *Bonhams' Website*, or by conduct, or otherwise), and whether made before or after this agreement or prior to or during the *Sale*. No such *Description* or *Estimate* is incorporated into this agreement between you and us. Any such *Description* or *Estimate*, if made by us or on our behalf, was (unless *Bonhams* itself sells the *Lot* as principal) made as agent on behalf of the *Seller*.

#### 2 PERFORMANCE OF THE CONTRACT FOR SALE

You undertake to us personally that you will observe and comply with all your obligations and undertakings to the *Seller* under the *Contract for Sale* in respect of the *Lot*.

#### 3 PAYMENT AND BUYER WARRANTIES

- 3.1 Unless agreed in writing between you and us or as otherwise set out in the *Notice to Bidders*, you must pay to us by not later than 4.30pm on the second working day following the *Sale*:
- 3.1.1 the *Purchase Price* for the *Lot*;
- 3.1.2 a *Buyer's Premium* in accordance with the rates set out in the *Notice to Bidders* on each lot, and
- 3.1.3 if the *Lot* is marked [AR], an *Additional Premium* which is calculated and payable in accordance with the *Notice to Bidders* together with VAT on that sum if applicable so that all sums due to us are cleared funds by the seventh working day after the *Sale*.
- 3.2 You must also pay us on demand any *Expenses* payable pursuant to this agreement.
- 3.3 All payments to us must be made in the currency in which the *Sale* was conducted, using, unless otherwise agreed by us in writing, one of the methods of payment set out in the *Notice to Bidders*. Our invoices will only be addressed to the registered *Bidder* unless the *Bidder* is acting as an agent for a named principal and we have approved that arrangement, in which case we will address the invoice to the principal.
- 3.4 Unless otherwise stated in this agreement all sums payable to us will be subject to VAT at the appropriate rate and VAT will be payable by you on all such sums.
- 3.5 We may deduct and retain for our own benefit from the monies paid by you to us the *Buyer's Premium*, the *Commission* payable by the *Seller* in respect of the *Lot*, any *Expenses* and VAT and any interest earned and/or incurred until payment to the *Seller*.
- 3.6 Time will be of the essence in relation to any payment payable to us. If you do not pay the *Purchase Price*, or any other sum due to us in accordance with this paragraph 3, we will have the rights set out in paragraph 7 below.
- 3.7 Where a number of *Lots* have been knocked down to you, any monies we receive from you will be applied firstly pro-rata to pay the *Purchase Price* of each *Lot* and secondly pro-rata to pay all amounts due to *Bonhams*.
- 3.8 You warrant that neither you nor - if you are a company, your directors, officers or your owner or their directors or shareholders - are an individual or an entity that is, or is owned or controlled by individuals or entities that are:
- 3.8.1 the subject of any sanctions administered or enforced by the U.S. Department of the Treasury's Office of Foreign Assets Control, the U.S. Department of State, the United Nations Security Council, the European Union, Her Majesty's Treasury, or other relevant sanctions authority ("Sanctions" and a "Sanctioned Party"); or
- 3.8.2 located, organised or resident in a country or territory that is, or whose government is, the subject of Sanctions, including without limitation, Iran, North Korea, Sudan and Syria.
- 3.9 You warrant that the funds being used for your purchase have no link with criminal activity including without limitation money laundering, tax evasion or terrorist financing, and that you not

- under investigation for neither have been charged nor convicted in connection with any criminal activity.
- 3.10 Where you are acting as agent for another party ("your Principal"), you undertake and warrant that:
- 3.10.1 you have conducted suitable customer due diligence into your Principal under applicable Sanctions and Anti-Money Laundering laws and regulations;
- 3.10.2 your Principal is not a Sanctioned Party and not owned, partially owned or controlled by a Sanctioned Party, and you have no reason to suspect that your Principal has been charged or convicted with, money laundering, terrorism or other crimes;
- 3.10.3 funds used for your or your Principal's purchase are not connected with or derived from any criminal activity, including without limitation tax evasion, money laundering or terrorist financing;
- 3.10.4 items purchased by you and your Principal through *Bonhams* are not being purchased or to be used in any way connected with or to facilitate breaches of applicable Tax, Anti-Money Laundering or Anti-Terrorism laws and regulations; and
- 3.10.5 that you consent to *Bonhams* relying upon your customer due diligence, undertaking to retain records of your due diligence for at least 5 years and to make such due diligence records available for inspection by an independent auditor in the event we request you to do so.
- 3.11 We reserve the rights to make enquiries about any person transacting with us and to identify the source of any funds received from you. In the event we have not completed our investigations in respect of anti-terrorism financing, anti-money laundering or other financial and identity checks concerning either you or the *Seller*, to our satisfaction at our discretion, we shall be entitled to retain *Lots* and/or proceeds of *Sale*, postpone or cancel any sale and to take any other actions required or permitted under applicable law, without liability to you.
- 4 COLLECTION OF THE LOT**
- 4.1 Subject to any power of the *Seller* or us to refuse to release the *Lot* to you, once you have paid to us; in cleared funds, everything due to the *Seller* and to us, and once we have completed our investigations under paragraph 3.11, we will release the *Lot* to you or as you may direct us in writing. The *Lot* will only be released on production of a buyer collection document, obtained from our cashier's office.
- 4.2 You must collect and remove the *Lot* at your own expense by the date and time specified in the *Notice to Bidders*, or if no date is specified, by 4.30pm on the seventh day after the *Sale*.
- 4.3 For the period referred to in paragraph 4.2, the *Lot* can be collected from the address referred to in the *Notice to Bidders* for collection on the days and times specified in the *Notice to Bidders*. Thereafter, the *Lot* may be removed elsewhere for storage and you must enquire from us as to when and where you can collect it, although this information will usually be set out in the *Notice to Bidders*.
- 4.4 If you have not collected the *Lot* by the date specified in the *Notice to Bidders*, you authorise us, acting in this instance as your agent and on your behalf, to enter into a contract (the "*Storage Contract*") with the *Storage Contractor* for the storage of the *Lot* on the then current standard terms and conditions agreed between *Bonhams* and the *Storage Contractor* (copies of which are available on request). If the *Lot* is stored at our premises storage fees at our current daily rates (currently a minimum of £3 plus VAT per *Lot* per day) will be payable from the expiry of the period referred to in paragraph 4.2. These storage fees form part of our *Expenses*.
- 4.5 Until you have paid the *Purchase Price* and any *Expenses* in full the *Lot* will either be held by us as agent on behalf of the *Seller* or held by the *Storage Contractor* as agent on behalf of the *Seller* and ourselves on the terms contained in the *Storage Contract*.
- 4.6 You undertake to comply with the terms of any *Storage Contract* and in particular to pay the charges (and all costs of moving the *Lot* into storage) due under any *Storage Contract*. You acknowledge and agree that you will not be able to collect the *Lot* from the *Storage Contractor's* premises until you have paid the *Purchase Price*, any *Expenses* and all charges due under the *Storage Contract*.
- 4.7 You will be wholly responsible for packing, handling and transport of the *Lot* on collection and for complying with all import or export regulations in connection with the *Lot*.
- 4.8 You will be wholly responsible for any removal, storage, or other charges for any *Lot* not removed in accordance with paragraph 4.2, payable at our current rates, and any *Expenses* we incur (including any charges due under the *Storage Contract*), all of which must be paid by you on demand and in any event before any collection of the *Lot* by you or on your behalf.
- 5 STORING THE LOT**
- We agree to store the *Lot* until the earlier of your removal of the *Lot* or until the time and date set out in the *Notice to Bidders*, on the *Sale* Information Page or at the back of the catalogue (or if no date is specified, by 4.30pm on the seventh day after the *Sale*) and, subject to paragraphs 3, 6 and 10, to be responsible as *bailee* to you for damage to or the loss or destruction of the *Lot* (notwithstanding that it is not your property before payment of the *Purchase Price*). If you do not collect the *Lot* before the time and date set out in the *Notice to Bidders* (or if no date is specified, by 4.30pm on the seventh day after the *Sale*) we may remove the *Lot* to another location, the details of which will usually be set out in the relevant section of the *Catalogue*. If

	you have not paid for the <i>Lot</i> in accordance with paragraph 3, and the <i>Lot</i> is moved to any third party's premises, the <i>Lot</i> will be held by such third party strictly to <i>Bonhams'</i> order and we will retain our lien over the <i>Lot</i> until we have been paid in full in accordance with paragraph 3.	
<b>6</b>	<b>RESPONSIBILITY FOR THE LOT</b>	
6.1	Title (ownership) in the <i>Lot</i> passes to you (i) on payment of the <i>Purchase Price</i> to us in full in cleared funds and (ii) when investigations have been completed to our satisfaction under paragraph 3.11.	
6.2	Please note however, that under the <i>Contract for Sale</i> , the <b>risk in the <i>Lot</i> passes to you after 7 days from the day upon which it is knocked down to you or upon collection of the <i>Lot</i> if earlier, and you are advised to obtain insurance in respect of the <i>Lot</i> as soon as possible after the <i>Sale</i>.</b>	
<b>7</b>	<b>FAILURE TO PAY OR TO REMOVE THE LOT AND PART PAYMENTS</b>	
7.1	If all sums payable to us are not so paid in full at the time they are due and/or the <i>Lot</i> is not removed in accordance with this agreement, we will (without further notice to you unless otherwise provided below), be entitled to exercise one or more of the following rights (without prejudice to any rights we may exercise on behalf of the <i>Seller</i> ):	
7.1.1	to terminate this agreement immediately for your breach of contract;	
7.1.2	to retain possession of the <i>Lot</i> ;	
7.1.3	to remove, and/or store the <i>Lot</i> at your expense;	
7.1.4	to take legal proceedings against you for payment of any sums payable to us by you (including the <i>Purchase Price</i> ) and/or damages for breach of contract;	
7.1.5	to be paid interest on any monies due to us (after as well as before judgement or order) at the annual rate of 5% per annum above the base lending rate of National Westminster Bank Plc from time to time to be calculated on a daily basis from the date upon which such monies become payable until the date of actual payment;	
7.1.6	to repossess the <i>Lot</i> (or any part thereof) which has not become your property, and for this purpose (unless you buy the <i>Lot</i> as a <i>Consumer</i> ) you hereby grant an irrevocable licence to us, by ourselves, our servants or agents, to enter upon all or any of your premises (with or without vehicles) during normal business hours to take possession of any <i>Lot</i> or part thereof;	
7.1.7	to sell the <i>Lot Without Reserve</i> by auction, private treaty or any other means on giving you three months' written notice of our intention to do so;	
7.1.8	to retain possession of any of your other property in our possession for any purpose (including, without limitation, other goods sold to you or with us for <i>Sale</i> ) until all sums due to us have been paid in full;	
7.1.9	to apply any monies received from you for any purpose whether at the time of your default or at any time thereafter in payment or part payment of any sums due to us by you under this agreement;	
7.1.10	on three months' written notice to sell, <i>Without Reserve</i> , any of your other property in our possession or under our control for any purpose (including other goods sold to you or with us for <i>Sale</i> ) and to apply any monies due to you as a result of such <i>Sale</i> in payment or part payment of any amounts owed to us;	
7.1.11	refuse to allow you to register for a future <i>Sale</i> or to reject a bid from you at any future <i>Sale</i> or to require you to pay a deposit before any bid is accepted by us at any future <i>Sale</i> in which case we will be entitled to apply such deposit in payment or part payment, as the case may be, of the <i>Purchase Price</i> of any <i>Lot</i> of which you are the <i>Buyer</i> .	
7.1.12	having made reasonable efforts to inform you, to release your name and address to the <i>Seller</i> , so they might take appropriate steps to recover the amounts due and legal costs associated with such steps.	
7.2	You agree to indemnify us against all legal and other costs, all losses and all other <i>Expenses</i> (whether or not court proceedings will have been issued) incurred by us as a result of our taking steps under this paragraph 7 on a full indemnity basis together with interest thereon (after as well as before judgement or order) at the rate specified in paragraph 7.1.5 from the date upon which we become liable to pay the same until payment by you.	
7.3	If you pay us only part of the sums due to us such payment shall be applied firstly to the <i>Purchase Price</i> of the <i>Lot</i> (or where you have purchased more than one <i>Lot</i> pro-rata towards the <i>Purchase Price</i> of each <i>Lot</i> ) and secondly to the <i>Buyer's Premium</i> (or where you have purchased more than one <i>Lot</i> pro-rata to the <i>Buyer's Premium</i> on each <i>Lot</i> ) and thirdly to any other sums due to us.	
7.4	We will account to you in respect of any balance we hold remaining from any monies received by us in respect of any <i>Sale</i> of the <i>Lot</i> under our rights under this paragraph 7 after the payment of all sums due to us and/or the <i>Seller</i> within 28 days of receipt by us of all such sums paid to us.	
<b>8</b>	<b>CLAIMS BY OTHER PERSONS IN RESPECT OF THE LOT</b>	
8.1	Whenever it becomes apparent to us that the <i>Lot</i> is the subject of a claim by someone other than you and other than the <i>Seller</i> (or that such a claim can reasonably be expected to be made), we may, at our absolute discretion, deal with the <i>Lot</i> in any manner which appears to us to recognise the legitimate interests of ourselves and the other parties involved and lawfully to protect our position and our legitimate interests. Without prejudice to the generality of the discretion and by way of example, we may:	<p>8.1.1 retain the <i>Lot</i> to investigate any question raised or reasonably expected by us to be raised in relation to the <i>Lot</i>; and/or</p> <p>8.1.2 deliver the <i>Lot</i> to a person other than you; and/or</p> <p>8.1.3 commence interpleader proceedings or seek any other order of any court, mediator, arbitrator or government body; and/or</p> <p>8.1.4 require an indemnity and/or security from you in return for pursuing a course of action agreed to by you.</p> <p>8.2 The discretion referred to in paragraph 8.1:</p> <p>8.2.1 may be exercised at any time during which we have actual or constructive possession of the <i>Lot</i>, or at any time after such possession, where the cessation of such possession has occurred by reason of any decision, order or ruling of any court, mediator, arbitrator or government body; and</p> <p>8.2.2 will not be exercised unless we believe that there exists a serious prospect of a good arguable case in favour of the claim.</p>
<b>9</b>	<b>FORGERIES</b>	
9.1	We undertake a personal responsibility for any <i>Forgery</i> in accordance with the terms of this paragraph 9.	
9.2	Paragraph 9 applies only if:	
9.2.1	your name appears as the named person to whom the original invoice was made out by us in respect of the <i>Lot</i> and that invoice has been paid; and	
9.2.2	you notify us in writing as soon as reasonably practicable after you have become aware that the <i>Lot</i> is or may be a <i>Forgery</i> , and in any event within one year after the <i>Sale</i> , that the <i>Lot</i> is a <i>Forgery</i> ; and	
9.2.3	within one month after such notification has been given, you return the <i>Lot</i> to us in the same condition as it was at the time of the <i>Sale</i> , accompanied by written evidence that the <i>Lot</i> is a <i>Forgery</i> and details of the <i>Sale</i> and <i>Lot</i> number sufficient to identify the <i>Lot</i> .	
9.3	Paragraph 9 will not apply in respect of a <i>Forgery</i> if:	
9.3.1	the <i>Entry</i> in relation to the <i>Lot</i> contained in the <i>Catalogue</i> reflected the then accepted general opinion of scholars and experts or fairly indicated that there was a conflict of such opinion or reflected the then current opinion of an expert acknowledged to be a leading expert in the relevant field; or	
9.3.2	it can be established that the <i>Lot</i> is a <i>Forgery</i> only by means of a process not generally accepted for use until after the date on which the <i>Catalogue</i> was published or by means of a process which it was unreasonable in all the circumstances for us to have employed.	
9.4	You authorise us to carry out such processes and tests on the <i>Lot</i> as we in our absolute discretion consider necessary to satisfy ourselves that the <i>Lot</i> is or is not a <i>Forgery</i> .	
9.5	If we are satisfied that a <i>Lot</i> is a <i>Forgery</i> we will (as principal) purchase the <i>Lot</i> from you and you will transfer the title to the <i>Lot</i> in question to us, with full title guarantee, free from any liens, charges, encumbrances and adverse claims, in accordance with the provisions of Sections 12(1) and 12(2) of the <i>Sale of Goods Act 1979</i> and we will pay to you an amount equal to the sum of the <i>Purchase Price</i> , <i>Buyer's Premium</i> , <i>VAT</i> and <i>Expenses</i> paid by you in respect of the <i>Lot</i> .	
9.6	The benefit of paragraph 9 is personal to, and incapable of assignment by, you.	
9.7	If you sell or otherwise dispose of your interest in the <i>Lot</i> , all rights and benefits under this paragraph 9 will cease.	
9.8	Paragraph 9 does not apply to a <i>Lot</i> made up of or including a Chinese painting or Chinese paintings, a motor vehicle or motor vehicles, a <i>Stamp</i> or <i>Stamps</i> or a <i>Book</i> or <i>Books</i> .	
<b>10</b>	<b>OUR LIABILITY</b>	
10.1	We will not be liable whether in negligence, other tort, breach of contract or statutory duty or in restitution or under the <i>Misrepresentation Act 1967</i> or in any other way for lack of conformity with or any inaccuracy, error, misdescription or omission in any <i>Description</i> of the <i>Lot</i> or any <i>Entry</i> or <i>Estimate</i> in respect of it, made by us or on our behalf or by or on behalf of the <i>Seller</i> (whether made in writing, including in the <i>Catalogue</i> , or on the <i>Bonhams' Website</i> , or orally, or by conduct or otherwise) and whether made before or after this agreement or prior to or during the <i>Sale</i> .	
10.2	Our duty to you while the <i>Lot</i> is at your risk and/or your property and in our custody and/or control is to exercise reasonable care in relation to it, but we will not be responsible for damage to the <i>Lot</i> or to other persons or things caused by:	
10.2.1	handling the <i>Lot</i> if it was affected at the time of <i>Sale</i> to you by woodworm and any damage is caused as a result of it being affected by woodworm; or	
10.2.2	changes in atmospheric pressure; nor will we be liable for:	
10.2.3	damage to tension stringed musical instruments; or	
10.2.4	damage to gilded picture frames, plaster picture frames or picture frame glass; and if the <i>Lot</i> is or becomes dangerous, we may dispose of it without notice to you in advance in any manner we think fit and we will be under no liability to you for doing so.	
10.3.1	We will not be liable to you for any loss of <i>Business</i> , <i>Business</i> profits, revenue or income or for loss of <i>Business</i> reputation or for disruption to <i>Business</i> or wasted time on the part of the <i>Buyer's</i> management or staff or, if you are buying the <i>Lot</i> in the course of a <i>Business</i> , for any indirect losses or consequential damages of any kind, irrespective in any case of the nature, volume or source of the loss or damage alleged to be suffered, and irrespective of whether the said loss or damage is caused by or claimed in respect of any negligence, other tort, breach of contract, statutory duty, bailee's duty, a restitutionary claim or otherwise.	
10.3.2	Unless you buy the <i>Lot</i> as a <i>Consumer</i> , in any circumstances	
	where we are liable to you in respect of a <i>Lot</i> , or any act, omission, statement, representation in respect of it, or this agreement or its performance, and whether in damages, for an indemnity or contribution or for a restitutionary remedy or in any way whatsoever, our liability will be limited to payment of a sum which will not exceed by way of maximum the amount of the <i>Purchase Price</i> of the <i>Lot</i> plus <i>Buyer's Premium</i> (less any sum you may be entitled to recover from the <i>Seller</i> ) irrespective in any case of the nature, volume or source of any loss or damage alleged to be suffered or sum claimed as due, and irrespective of whether the liability arises from negligence, other tort, breach of contract, statutory duty, bailee's duty, a restitutionary claim or otherwise.	
10.4	You may wish to protect yourself against loss by obtaining insurance. Nothing set out above will be construed as excluding or restricting (whether directly or indirectly) any person's liability or excluding or restricting any person's rights or remedies in respect of (i) fraud, or (ii) death or personal injury caused by our negligence (or any person under our control or for whom we are legally responsible), or (iii) acts or omissions for which we are liable under the <i>Occupiers Liability Act 1957</i> , or (iv) any other liability to the extent the same may not be excluded or restricted as a matter of law, or (v) under our undertaking in paragraph 9 of these conditions.	
<b>11</b>	<b>BOOKS MISSING TEXT OR ILLUSTRATIONS</b>	
	Where the <i>Lot</i> is made up wholly of a <i>Book</i> or <i>Books</i> and any <i>Book</i> does not contain text or illustrations (in either case referred to as a "non-conforming <i>Lot</i> "), we undertake a personal responsibility for such a non-conforming <i>Lot</i> in accordance with the terms of this paragraph, if:	
	the original invoice was made out by us to you in respect of the <i>Lot</i> and that invoice has been paid; and	
	you notify us in writing as soon as reasonably practicable after you have become aware that the <i>Lot</i> is or may be a non-conforming <i>Lot</i> , and in any event within 20 days after the <i>Sale</i> (or such longer period as we may agree in writing) that the <i>Lot</i> is a non-conforming <i>Lot</i> ; and	
	within 20 days of the date of the relevant <i>Sale</i> (or such longer period as we may agree in writing) you return the <i>Lot</i> to us in the same condition as it was at the time of the <i>Sale</i> , accompanied by written evidence that the <i>Lot</i> is a non-conforming <i>Lot</i> and details of the <i>Sale</i> and <i>Lot</i> number sufficient to identify the <i>Lot</i> ; but not if:	
	the <i>Entry</i> in the <i>Catalogue</i> in respect of the <i>Lot</i> indicates that the rights given by this paragraph do not apply to it; or	
	the <i>Entry</i> in the <i>Catalogue</i> in respect of the <i>Lot</i> reflected the then accepted general opinion of scholars and experts or fairly indicated that there was a conflict of such opinion; or	
	it can be established that the <i>Lot</i> is a non-conforming <i>Lot</i> only by means of a process not generally accepted for use until after the date on which the <i>Catalogue</i> was published or by means of a process which it was unreasonable in all the circumstances for us to have employed; or	
	the <i>Lot</i> comprises atlases, maps, autographs, manuscripts, extra illustrated books, music or periodical publications; or	
	the <i>Lot</i> was listed in the <i>Catalogue</i> under "collections" or "collections and various" or the <i>Lot</i> was stated in the <i>Catalogue</i> to comprise or contain a collection, issue or <i>Books</i> which are undescribed or the missing text or illustrations are referred to or the relevant parts of the <i>Book</i> contain blanks, half titles or advertisements.	
	If we are reasonably satisfied that a <i>Lot</i> is a non-conforming <i>Lot</i> , we will (as principal) purchase the <i>Lot</i> from you and you will transfer the title to the <i>Lot</i> in question to us, with full title guarantee, free from any liens, charges, encumbrances and adverse claims and we will pay to you an amount equal to the sum of the <i>Purchase Price</i> and <i>Buyer's Premium</i> paid by you in respect of the <i>Lot</i> .	
	The benefit of paragraph 10 is personal to, and incapable of assignment by, you and if you sell or otherwise dispose of your interest in the <i>Lot</i> , all rights and benefits under this paragraph will cease.	
<b>12</b>	<b>MISCELLANEOUS</b>	
12.1	You may not assign either the benefit or burden of this agreement.	
12.2	Our failure or delay in enforcing or exercising any power or right under this agreement will not operate or be deemed to operate as a waiver of our rights under it except to the extent of any express waiver given to you in writing. Any such waiver will not affect our ability subsequently to enforce any right arising under this agreement.	
12.3	If either party to this agreement is prevented from performing that party's respective obligations under this agreement by circumstances beyond its reasonable control (including without limitation governmental intervention, industrial action, insurrection, warfare (declared or undeclared), terrorism, power failure, epidemic or natural disaster) or if performance of its obligations would by reason of such circumstances give rise to a significantly increased financial cost to it, that party will not, for so long as such circumstances prevail, be required to perform such obligations. This paragraph does not apply to the obligations imposed on you by paragraph 3.	
12.4	Any notice or other communication to be given under this agreement must be in writing and may be delivered by hand or sent by first class post or air mail or fax transmission (if to <i>Bonhams</i> marked for the attention of the Company Secretary), to the address or fax number of the relevant party given in the <i>Contract Form</i> (unless notice of any change of address is given in writing). It is the responsibility of the sender of the notice or	

- communication to ensure that it is received in a legible form within any applicable time period.
- 12.5 If any term or any part of any term of this agreement is held to be unenforceable or invalid, such unenforceability or invalidity will not affect the enforceability and validity of the remaining terms or the remainder of the relevant term.
- 12.6 References in this agreement to *Bonhams* will, where appropriate, include reference to *Bonhams'* officers, employees and agents.
- 12.7 The headings used in this agreement are for convenience only and will not affect its interpretation.
- 12.8 In this agreement "including" means "including, without limitation".
- 12.9 References to the singular will include reference to the plural (and vice versa) and reference to any one gender will include reference to the other genders.
- 12.10 Reference to a numbered paragraph is to a paragraph of this agreement.
- 12.11 Save as expressly provided in paragraph 12.12 nothing in this agreement confers (or purports to confer) on any person who is not a party to this agreement any benefit conferred by, or the right to enforce any term of, this agreement.
- 12.12 Where this agreement confers an immunity from, and/or an exclusion or restriction of, the responsibility and/or liability of *Bonhams*, it will also operate in favour and for the benefit of *Bonhams'* holding company and the subsidiaries of such holding company and the successors and assigns of *Bonhams* and of such companies and of any officer, employee and agent of *Bonhams* and such companies, each of whom will be entitled to rely on the relevant immunity and/or exclusion and/or restriction within and for the purposes of Contracts (Rights of Third Parties) Act 1999, which enables the benefit of a contract to be extended to a person who is not a party to the contract, and generally at law.
- 13 GOVERNING LAW**
- All transactions to which this agreement applies and all connected matters will be governed by and construed in accordance with the laws of that part of the United Kingdom where the Sale takes (or is to take) place and we and you each submit to the exclusive jurisdiction of the courts of that part of the United Kingdom, save that we may bring proceedings against you in any other court of competent jurisdiction to the extent permitted by the laws of the relevant jurisdiction. *Bonhams* has a complaints procedure in place.

#### DATA PROTECTION – USE OF YOUR INFORMATION

Where we obtain any personal information about you, we shall only use it in accordance with the terms of our Privacy Policy (subject to any additional specific consent(s) you may have given at the time your information was disclosed). A copy of our Privacy Policy can be found on our Website [www.bonhams.com](http://www.bonhams.com) or requested by post from Customer Services Department, 101 New Bond Street, London W1S 1SR, United Kingdom or by email from [info@bonhams.com](mailto:info@bonhams.com).

#### APPENDIX 3

##### DEFINITIONS AND GLOSSARY

Where these Definitions and Glossary are incorporated, the following words and phrases used have (unless the context otherwise requires) the meanings given to them below. The Glossary is to assist you to understand words and phrases which have a specific legal meaning with which you may not be familiar.

##### LIST OF DEFINITIONS

**"Account"** the bank account of *Bonhams* into which all sums received in respect of the *Purchase Price* of any Lot will be paid.

**"Additional Premium"** a premium, calculated in accordance with the *Notice to Bidders*, to cover *Bonhams' Expenses* relating to the payment of royalties under the Artists Resale Right Regulations 2006 which is payable by the *Buyer* to *Bonhams* on any Lot marked [AR] which sells for a *Hammer Price* which together with the *Buyer's Premium* (but excluding any VAT) equals or exceeds 1000 euros (converted into the currency of the Sale using the European Central Bank Reference rate prevailing on the date of the Sale).

**"Auctioneer"** the representative of *Bonhams* conducting the Sale.

**"Bidder"** Any person considering, attempting or making a Bid, including those who have completed a *Bidding Form*.

**"Bidding Form"** our Bidding Registration Form, our Absentee Bidding Form or our Telephone Bidding Form.

**"Bonhams"** Bonhams 1793 Limited or its successors or assigns. *Bonhams* is also referred to in the *Buyer's Agreement*, the Conditions of Business and the *Notice to Bidders* by the words "we", "us" and "our".

**"Book"** a printed *Book* offered for *Sale* at a specialist *Book Sale*.

**"Business"** includes any trade, *Business* and profession.

**"Buyer"** the person to whom a Lot is knocked down by the *Auctioneer*. The *Buyer* is also referred to in the *Contract for Sale* and the *Buyer's Agreement* by the words "you" and "your".

**"Buyer's Agreement"** the contract entered into by *Bonhams* with the *Buyer* (see Appendix 2 in the *Catalogue*).

**"Buyer's Premium"** the sum calculated on the *Hammer Price* at the rates stated in the *Notice to Bidders*.

**"Catalogue"** the *Catalogue* relating to the relevant *Sale*, including any representation of the *Catalogue* published on our Website.

**"Commission"** the *Commission* payable by the *Seller* to *Bonhams* calculated at the rates stated in the *Contract Form*.

**"Condition Report"** a report on the physical condition of a Lot provided to a *Bidder* or potential *Bidder* by *Bonhams* on behalf of the *Seller*.

**"Conditions of Sale"** the *Notice to Bidders*, *Contract for Sale*, *Buyer's Agreement* and Definitions and Glossary.

**"Consignment Fee"** a fee payable to *Bonhams* by the *Seller* calculated at rates set out in the Conditions of Business.

**"Consumer"** a natural person who is acting for the relevant purpose outside his trade, *Business* or profession.

**"Contract Form"** the *Contract Form*, or vehicle *Entry* form, as applicable, signed by or on behalf of the *Seller* listing the Lots to be offered for *Sale* by *Bonhams*.

**"Contract for Sale"** the *Sale* contract entered into by the *Seller* with the *Buyer* (see Appendix 1 in the *Catalogue*).

**"Contractual Description"** the only *Description* of the Lot (being that part of the *Entry* about the Lot in the *Catalogue* which is in bold letters, any photograph (except for the colour) and the contents of any *Condition Report*) to which the *Seller* undertakes in the *Contract for Sale* the Lot corresponds.

**"Description"** any statement or representation in any way descriptive of the Lot, including any statement or representation relating to its authorship, attribution, condition, provenance, authenticity, style, period, age, suitability, quality, origin, value, estimated selling price (including the *Hammer Price*).

**"Entry"** a written statement in the *Catalogue* identifying the Lot and its Lot number which may contain a *Description* and illustration(s) relating to the Lot.

**"Estimate"** a statement of our opinion of the range within which the hammer is likely to fall.

**"Expenses"** charges and *Expenses* paid or payable by *Bonhams* in respect of the Lot including legal *Expenses*, banking charges and *Expenses* incurred as a result of an electronic transfer of money, charges and *Expenses* for loss and damage cover, insurance, *Catalogue* and other reproductions and illustrations, any customs duties, advertising, packing or shipping costs, reproductions rights' fees, taxes, levies, costs of testing, searches or enquiries, preparation of the Lot for *Sale*, storage charges, removal charges, removal charges or costs of collection from the *Seller* as the *Seller's* agents or from a defaulting *Buyer*, plus VAT if applicable.

**"Forgery"** an imitation intended by the maker or any other person to deceive as to authorship, attribution, origin, authenticity, style, date, age, period, provenance, culture, source or composition, which at the date of the Sale had a value materially less than it would have had if the Lot had not been such an imitation, and which is not stated to be such an imitation in any description of the Lot. A Lot will not be a *Forgery* by reason of any damage to, and/or restoration and/ or modification work (including repainting or over painting) having been carried out on the Lot, where that damage, restoration or modification work (as the case may be) does not substantially affect the identity of the Lot as one conforming to the *Description* of the Lot.

**"Guarantee"** the obligation undertaken personally by *Bonhams* to the *Buyer* in respect of any *Forgery* and, in the case of specialist *Stamp Sales* and/or specialist *Book Sales*, a Lot made up of a *Stamp* or *Stamps* or a *Book* or *Books* as set out in the *Buyer's Agreement*.

**"Hammer Price"** the price in the currency in which the Sale is conducted at which a Lot is knocked down by the *Auctioneer*.

**"Loss and Damage Warranty"** means the warranty described in paragraph 8.2 of the Conditions of Business.

**"Loss and Damage Warranty Fee"** means the fee described in paragraph 8.2.3 of the Conditions of Business.

**"Lot"** any item consigned to *Bonhams* with a view to its *Sale* at auction or by private treaty (and reference to any Lot will include, unless the context otherwise requires, reference to individual items comprised in a lot of two or more items offered for *Sale* as one Lot).

**"Motoring Catalogue Fee"** a fee payable by the *Seller* to *Bonhams* in consideration of the additional work undertaken by *Bonhams* in respect of the cataloguing of motor vehicles and in respect of the promotion of *Sales* of motor vehicles.

**"New Bond Street"** means *Bonhams'* saleroom at 101 New Bond Street, London W1S 1SR.

**"Notional Charges"** the amount of *Commission* and VAT which would have been payable if the Lot had been sold at the *Notional Price*.

**"Notional Fee"** the sum on which the *Consignment Fee* payable to *Bonhams* by the *Seller* is based and which is calculated according to the formula set out in the Conditions of Business.

**"Notional Price"** the latest in time of the average of the high and low *Estimates* given by us to you or stated in the *Catalogue* or, if no such *Estimates* have been given or stated, the *Reserve* applicable to the Lot.

**"Notice to Bidders"** the notice printed at the back or front of our *Catalogues*.

**"Purchase Price"** the aggregate of the *Hammer Price* and VAT on the *Hammer Price* (where applicable), the *Buyer's Premium* and VAT on the *Buyer's Premium* and any *Expenses*.

**"Reserve"** the minimum price at which a Lot may be sold (whether at auction or by private treaty).

**"Sale"** the auction *Sale* at which a Lot is to be offered for *Sale* by *Bonhams*.

**"Sale Proceeds"** the net amount due to the *Seller* from the *Sale* of a Lot, being the *Hammer Price* less the *Commission*, any VAT chargeable thereon, *Expenses* and any other amount due to us in whatever capacity and howsoever arising.

**"Seller"** the person who offers the Lot for *Sale* named on the *Contract Form*. Where the person so named identifies on the form another person as acting as his agent, or where the person named on the *Contract Form* acts as an agent for a principal (whether such agency is disclosed to *Bonhams* or not), "Seller" includes both the agent and the principal who shall be jointly and severally liable as such. The *Seller* is also referred to in the Conditions of Business by the words "you" and "your".

**"Specialist Examination"** a visual examination of a Lot by a specialist on the Lot.

**"Stamp"** means a postage *Stamp* offered for *Sale* at a Specialist *Stamp Sale*.

**"Standard Examination"** a visual examination of a Lot by a non-specialist member of *Bonhams'* staff.

**"Storage Contract"** means the contract described in paragraph 8.3.3 of the Conditions of Business or paragraph 4.4 of the *Buyer's Agreement* (as appropriate).

**"Storage Contractor"** means the company identified as such in the *Catalogue*.

**"Terrorism"** means any act or threatened act of terrorism, whether any person is acting alone or on behalf of or in connection with any organisation(s) and/or government(s), committed for political, religious or ideological or similar purposes including, but not limited to, the intention to influence any government and/or put the public or any section of the public into fear.

**"VAT"** value added tax at the prevailing rate at the date of the Sale in the United Kingdom.

**"Website"** *Bonhams Website* at [www.bonhams.com](http://www.bonhams.com)

**"Withdrawal Notice"** the *Seller's* written notice to *Bonhams* revoking *Bonhams'* instructions to sell a Lot.

**"Without Reserve"** where there is no minimum price at which a Lot may be sold (whether at auction or by private treaty).

#### GLOSSARY

The following expressions have specific legal meanings with which you may not be familiar. The following glossary is intended to give you an understanding of those expressions but is not intended to limit their legal meanings:

**"artist's resale right"**: the right of the creator of a work of art to receive a payment on *Sales* of that work subsequent to the original *Sale* of that work by the creator of it as set out in the Artists Resale Right Regulations 2006.

**"bailee"**: a person to whom goods are entrusted.

**"indemnity"**: an obligation to put the person who has the benefit of the indemnity in the same position in which he would have been, had the circumstances giving rise to the indemnity not arisen and the expression "indemnify" is construed accordingly.

**"interpleader proceedings"**: proceedings in the Courts to determine ownership or rights over a Lot.

**"knocked down"**: when a Lot is sold to a *Bidder*, indicated by the fall of the hammer at the Sale.

**"lien"**: a right for the person who has possession of the Lot to retain possession of it.

**"risk"**: the possibility that a Lot may be lost, damaged, destroyed, stolen, or deteriorate in condition or value.

**"title"**: the legal and equitable right to the ownership of a Lot.

**"tort"**: a legal wrong done to someone to whom the wrong doer has a duty of care.

**"warranty"**: a legal assurance or promise, upon which the person to whom the warranty was given has the right to rely.

#### SALE OF GOODS ACT 1979

The following is an extract from the Sale of Goods Act 1979:

"Section 12 Implied terms about title, etc

- (1) In a contract of sale, other than one to which subsection (3) below applies, there is an implied term on the part of the seller that in the case of a sale he has a right to sell the goods, and in the case of an agreement to sell he will have such a right at the time when the property is to pass.
- (2) In a contract of sale, other than one to which subsection (3) below applies, there is also an implied term that-
  - (a) the goods are free, and will remain free until the time when the property is to pass, from any charge or encumbrance not disclosed or known to the buyer before the contract is made, and
  - (b) the buyer will enjoy quiet possession of the goods except in so far as it may be disturbed by the owner or other person entitled to the benefit of any charge or encumbrance so disclosed or known.
- (3) This subsection applies to a contract of sale in the case of which there appears from the contract or is to be inferred from its circumstances an intention that the seller should transfer only such title as he or a third person may have.
- (4) In a contract to which subsection (3) above applies there is an implied term that all charges or encumbrances known to the seller and not known to the buyer have been disclosed to the buyer before the contract is made.
- (5) In a contract to which subsection (3) above applies there is also an implied term that none of the following will disturb the buyer's quiet possession of the goods, namely:
  - (a) the seller;
  - (b) in a case where the parties to the contract intend that the seller should transfer only such title as a third person may have, that person;
  - (c) anyone claiming through or under the seller or that third person otherwise than under a charge or encumbrance disclosed or known to the buyer before the contract is made.
- (5A) As regards England and Wales and Northern Ireland, the term implied by subsection (1) above is a condition and the terms implied by subsections (2), (4) and (5) above are warranties."



Registration and Bidding Form

(Attendee / Absentee / Online / Telephone Bidding)

Please circle your bidding method above.

Paddle number (for office use only)

Bonhams

This sale will be conducted in accordance with Bonhams' Conditions of Sale and bidding and buying at the Sale will be regulated by these Conditions. You should read the Conditions in conjunction with the Sale Information relating to this Sale which sets out the charges payable by you on the purchases you make and other terms relating to bidding and buying at the Sale. You should ask any questions you have about the Conditions before signing this form. These Conditions also contain certain undertakings by bidders and buyers and limit Bonhams' liability to bidders and buyers.

Data protection – use of your information

Where we obtain any personal information about you, we shall only use it in accordance with the terms of our Privacy Policy (subject to any additional specific consent(s) you may have given at the time your information was disclosed). A copy of our Privacy Policy can be found on our website (www.bonhams.com) or requested by post from Customer Services Department, 101 New Bond Street, London W1S 1SR United Kingdom or by e-mail from info@bonhams.com. We may disclose your personal information to any member of our group which means our subsidiaries, our ultimate holding company and its subsidiaries (whether registered in the UK or elsewhere). We will not disclose your data to anyone outside our group but we may from time to time provide you with information about goods and services which we feel maybe of interest to you including those provided by third parties. If you do not want to receive such information (except for information you specifically requested) please tick this box ☐ Would you like to receive e-mailed information from us? if so please tick this box ☐

Notice to Bidders.

At least 24 hours before the Sale, clients must provide government or state issued photographic proof of ID and date of birth e.g. - passport, driving licence - and if not included in ID document, proof of address e.g - utility bill, bank or credit card statement etc. Corporate clients should also provide a copy of their articles of association / company registration documents, and the entities name and registered address, documentary proof of its beneficial owners and directors, together with a letter authorising the individual to bid on the company's behalf. Failure to provide this may result in your bids not being processed or completed. For higher value lots you may also be asked to provide a bank reference.

If successful

I will collect the purchases myself ☐  
Please arrange shippers to contact me with a quote and I agree that you may pass them my contact details. ☐

Sale title:Edinburgh Jewels

Sale date:Thursday 25 June 2020

Sale no.26038

Sale venue:Edinburgh

If you are not attending the sale in person, please provide details of the Lots on which you wish to bid at least 24 hours prior to the sale. Bids will be rounded down to the nearest increment. Please refer to the Notice to Bidders in the catalogue for further information relating to Bonhams executing telephone, online or absentee bids on your behalf. Bonhams will endeavour to execute these bids on your behalf but will not be liable for any errors or failing to execute bids.

General Bid Increments:

£10 - 200 .....by 10s

£200 - 500 .....by 20 / 50 / 80s

£500 - 1,000 .....by 50s

£1,000 - 2,000 .....by 100s

£2,000 - 5,000 .....by 200 / 500 / 800s

£5,000 - 10,000 .....by 500s

£10,000 - 20,000 .....by 1,000s

£20,000 - 50,000 .....by 2,000 / 5,000 / 8,000s

£50,000 - 100,000 .....by 5,000s

£100,000 - 200,000 .....by 10,000s

above £200,000 .....at the auctioneer's discretion

The auctioneer has discretion to split any bid at any time.

Customer Number

Title

First Name

Last Name

Company name (if applicable)

Company Registration number (if applicable)

Address

City

Post / Zip code

County / State

Telephone (mobile)

Country

Telephone (landline)

E-mail (in capitals)

Please answer all questions below

1. ID supplied: Government issued ID ☐ and (if the ID does not confirm your address) ☐ current utility bill/ bank statement. If a corporate entity, please provide the Certificate of Incorporation or Partnership Deed and a letter authorising you to act.

2. Are you representing the Bidder? ☐ If yes, please complete question 3.

3. Bidder's name, address and contact details (phone and email): Bidder's ID: Government issued ID ☐ and (if the ID does not confirm their address) ☐ current utility bill/bank statement

Are you acting in a business capacity?

Yes ☐ No ☐

If registered for VAT in the EU please enter your registration here:

/   -     -

Please note that all telephone calls are recorded.

Telephone or Absentee (T / A)	Lot no.	Brief description	MAX bid in GBP (excluding premium & VAT)	Covering bid ★

FOR WINE SALES ONLY

Please leave lots "available under bond" in bond ☐

Please include delivery charges (minimum charge of £20 + VAT) ☐

BY SIGNING THIS FORM YOU AGREE THAT YOU HAVE SEEN THE CATALOGUE AND HAVE READ AND UNDERSTOOD OUR CONDITIONS OF SALE INCLUDING BUYER'S WARRANTIES AND WISH TO BE BOUND BY THEM, AND AGREE TO PAY THE BUYER'S PREMIUM, VAT AND ANY OTHER CHARGES MENTIONED IN THE NOTICE TO BIDDERS. THIS AFFECTS YOUR LEGAL RIGHTS.

Bidder/Agent's (please delete one) signature:

Date:

★ Covering Bid: A maximum bid (exclusive of Buyers Premium and VAT) to be executed by Bonhams only if we are unable to contact you by telephone, or should the connection be lost during bidding.  
NB. Payment will only be accepted from an account in the same name as shown on the invoice and Auction Registration form.  
Please email or fax the completed Auction Registration form and requested information to Bonhams Customer Services, 101 New Bond Street, London, W1S 1SR. Tel: +44 (0) 20 7447 7447 Fax: +44 (0) 20 7447 7401 bids@bonhams.com  
Bonhams 1793 Limited. Montpelier Street, London SW7 1HH. Incorporated in England. Company Number 4326560.  
UK/08/19





**Bonhams**  
22 Queen Street  
Edinburgh, EH2 1JX

---

+44 (0) 131 225 2266  
[bonhams.com](http://bonhams.com)

**AUCTIONEERS SINCE 1793**