

JEWELLERY

Wednesday 11 July 2018



Bonhams

MONTPELIER STREET • KNIGHTSBRIDGE

JEWELLERY

Wednesday 11 July 2018 at 11am
Knightsbridge, London

BONHAMS

Montpelier Street
Knightsbridge
London SW7 1HH
www.bonhams.com

VIEWING

Sunday 8th July
11am – 3pm
Monday 9th July
9.30am – 4.30pm
Tuesday 10th July
9.30am – 4.30pm
Wednesday 11th July
9am – 10am, by appointment only

TRADE VIEW

Thursday 5th July
9.30am – 4.30pm, by appointment

BIDS

+44 (0) 20 7447 7447
+44 (0) 20 7447 7401 fax
bids@bonhams.com
To bid via the internet please visit
www.bonhams.com

Please note that bids should be submitted no later than 24 hours prior to the sale. New bidders must also provide proof of identity when submitting bids. Failure to do this may result in your bids not being processed.

Bidding by telephone will only be accepted on a lot with a lower estimate in excess of £500.

LIVE ONLINE BIDDING IS AVAILABLE FOR THIS SALE

Please email bids@bonhams.com with "Live bidding" in the subject line 48 hours before the auction to register for this service.

ENQUIRIES

Carole Gordon FGA DGA
Rachel Bailey FGA DGA
Jennifer Tonkin FGA
Jemima Chamberlain-Adams FGA
Tessa Rowse FGA
+44 (0)20 7393 3972
jewellery@bonhams.com

ADMINISTRATION

Janina Elias G.G.
+44 (0)20 7393 3970

PRESS ENQUIRIES

press@bonhams.com

SHIPPING ENQUIRES

Janina Elias G.G.
+44 (0)20 7393 3970
janina.elias@bonhams.com

CUSTOMER SERVICES

Monday to Friday
8.30am – 6pm
+44 (0) 20 7447 7447

SALE NUMBER:

24570

CATALOGUE:

£12

Please see back of catalogue for important notice to bidders

ILLUSTRATIONS

Front cover: Lots 253, 277
Back cover: Lot 271

REGISTRATION IMPORTANT NOTICE

Please note that all customers, irrespective of any previous activity with Bonhams, are required to complete the Bidder Registration Form in advance of the sale. The form can be found at the back of every catalogue and on our website at www.bonhams.com and should be returned by email or post to the specialist department or to the bids department at bids@bonhams.com

To bid live online and / or leave internet bids please go to www.bonhams.com/auctions/24570 and click on the Register to bid link at the top left of the page.

Watches

Important Notice Regarding Importation into the United States of Corum, Franck Muller, Piaget and Rolex watches. Bonhams cannot arrange for the delivery of Corum, Franck Muller, Piaget, Tudor and Rolex watches into The United States. The buyer or designated agent may collect the property in the country of sale. Please also note that in some circumstances we are unable to ship the watch with its strap due to certain import restrictions.

Please note that irrespective of origin, jadeite and rubies (and any jewellery pieces that contain them) may now be imported into the United States.

IMPORTANT INFORMATION

The United States Government has banned the import of ivory into the USA. Lots containing ivory are indicated by the symbol Φ printed beside the lot number in this catalogue.



Bonhams 1793 Limited

Registered No. 4326560
Registered Office: Montpelier Galleries
Montpelier Street, London SW7 1HH

+44 (0) 20 7393 3900
+44 (0) 20 7393 3905 fax

Bonhams International Board

Robert Brooks Co-Chairman,
Malcolm Barber Co-Chairman,
Colin Sheaf Deputy Chairman,
Matthew Girling CEO,
Patrick Meade Group Vice Chairman,
Jon Baddeley, Rupert Banner, Geoffrey Davies,
Jonathan Fairhurst, Asaph Hyman, James Knight,
Caroline Oliphant, Shahin Virani,
Edward Wilkinson, Leslie Wright.

Bonhams UK Ltd Directors

Colin Sheaf Chairman,
Harvey Cammell Deputy Chairman,
Antony Bennett, Matthew Bradbury,
Lucinda Bredin, Simon Cottle, Andrew Currie,
Jean Ghika, Charles Graham-Campbell,
Matthew Haley, Richard Harvey, Robin Hereford,
David Johnson, Charles Lanning, Grant MacDougall

Gordon McFarlan, Andrew McKenzie,
Simon Mitchell, Jeff Muse, Mike Neill,
Charlie O'Brien, Giles Peppiatt, India Phillips,
Peter Rees, John Sandon, Tim Schofield,
Veronique Scorer, Robert Smith, James Stratton,
Ralph Taylor, Charlie Thomas, David Williams,
Michael Wynnell-Mayow, Suzannah Yip.

1

A BOULDER OPAL AND DIAMOND RING, CIRCA 1920

The pear-shaped boulder opal cabochon within a surround of single-cut diamonds, mounted in platinum, *ring size P*

£800 - 1,200

€910 - 1,400

2

AN OPAL AND DIAMOND BROOCH, CIRCA 1910

Set to the centre with an oval opal cabochon, between triangular plaques set with old brilliant-cut diamonds, mounted in platinum and gold, *later rhodium plating, length 6.5cm*

£800 - 1,200

€910 - 1,400

3

AN EARLY 20TH CENTURY DIAMOND LINE BRACELET

The uniform series of brilliant-cut diamonds millegrain-set throughout to engraved box-link settings, *diamonds approx. 3.10cts total, length 19.2cm*

£1,500 - 2,000

€1,700 - 2,300

4

AN ART DECO EMERALD AND DIAMOND COCKTAIL WATCH, CIRCA 1920

The rectangular dial with Arabic chapters and outer minutes track, the bezel set with calibré-cut emeralds and single-cut diamonds, to a woven bracelet accented by articulated rows of brilliant and single-cut diamonds, mounted in platinum, *diamonds approx. 1.50cts total, Swiss assay mark, numbered, length 18.1cm*

£800 - 1,200

€910 - 1,400

5

A DIAMOND CLIP BROOCH

Of openwork geometric design, set throughout with rose, old brilliant and baguette-cut diamonds, *principal diamond approx. 0.70ct, remaining old brilliant and baguette-cut diamonds approx. 1.60cts total, length 3.7cm*

£1,200 - 1,500

€1,400 - 1,700





6

AN OPAL AND DIAMOND CLUSTER RING, BY C.J AUGER, CIRCA 1935

The oval opal cabochon within a surround of single-cut diamonds, mounted in platinum, *diamonds approx. 0.45ct total, signed, ring size F½*

£1,000 - 1,500 €1,100 - 1,700

7

A SAPPHIRE AND DIAMOND DRESS RING

The navette-shaped plaque of openwork design set throughout with single and old brilliant-cut diamonds, with calibré-cut sapphire accents, between rose-cut diamond shoulders, *diamonds approx. 0.65ct total, ring size N*

£800 - 1,200 €910 - 1,400

8

A SYNTHETIC SAPPHIRE AND DIAMOND BRACELET

Designed as an articulated strap, set with French and calibré-cut synthetic sapphires and old brilliant-cut diamonds, *diamonds approx. 5.25cts total, two sapphires deficient, length 18.4cm*

£2,000 - 3,000 €2,300 - 3,400

9

A DIAMOND PLAQUE RING

The pierced plaque millegrain-set with old brilliant and single-cut diamonds, between shoulders of openwork scroll design, the band engraved with foliate motifs, *diamonds approx. 1.25cts total, ring size M*

£800 - 1,200 €910 - 1,400

10

A SAPPHIRE AND DIAMOND COCKTAIL WATCH

The octagonal dial with Arabic numerals, between openwork lugs set with old brilliant and single-cut diamonds and calibré-cut sapphires and synthetic sapphires, *diamonds approx. 0.35ct total, size adjustable*

£800 - 1,200 €910 - 1,400

11

A 'CHANDRA' BRACELET, BY BULGARI

The uniform series of white ceramic beads with lotus leaf decoration, signed Bulgari, length 21.2cm

£1,000 - 1,500 €1,100 - 1,700

12

A PAIR OF SAPPHIRE EARHOOPS, RETAILED BY GARRARD

Each fluted hoop accented by collet-set circular sapphire cabochons, mounted in 18 carat yellow gold, maker's mark G&Co., UK import mark, length 2.7cm, maker's case and box

£800 - 900 €910 - 1,000

13^Y

A LAPIS LAZULI AND MOTHER-OF-PEARL DRESS RING

Formed as a domed pyramid each side alternately-set with a mother-of-pearl or lapis lazuli panel, the shoulders set with graduations of lapis lazuli rectangular-shaped cabochons, ring size M

£1,500 - 2,000 €1,700 - 2,300

Please note this lot will be subject to USA Fish and Wildlife regulations if imported into the USA.

14

A BANGLE, BY CARTIER

The curved rectangular-shaped bangle of bicoloured design, signed Cartier, numbered, inner diameter 5.8cm, accompanied by screwdriver and maker's case (2)

£1,500 - 2,000 €1,700 - 2,300

15

A SET OF 'SEAGULL' BROOCHES, BY TIFFANY

Each designed as a stylised seagull in flight, signed Tiffany & Co., widths 2.9cm - 5.4cm (3)

£800 - 1,200 €910 - 1,400





16



17



18



19



20

16

A PAIR OF CITRINE EARCLIPS, BY ELIZABETH RAND

Each shield-shaped plaque accented by brilliant-cut diamonds, centrally-set with an oval-cut citrine, *diamonds approx. 0.65ct total, signed E.Rand, length 2.4cm, maker's pouch*

£800 - 1,200

€910 - 1,400

17

A 'CHANDRA' RING, BY BULGARI

Set with an oval pink tourmaline cabochon to a white ceramic ring with lotus leaf decoration, *signed Bulgari, ring size M*

£800 - 1,200

€910 - 1,400

18

A CULTURED PEARL NECKLACE WITH A SAPPHIRE CLASP

The single-strand of 10.3mm - 15.6mm cultured pearls to a barrel-shaped clasp accented by calibr -cut sapphires, *length 50.3cm*

£800 - 1,200

€910 - 1,400

19

A DIAMOND RING, BY POMELLATO

The bicoloured ring of reeded design, accented by a brilliant-cut diamond recess, *diamonds approx. 0.40ct total, signed Pomellato, ring size Q*

£1,000 - 1,500

€1,100 - 1,700

20

A GEM-SET BANGLE, BY ANNABEL JONES

The 18 carat yellow gold bangle of tapering and fluted design, the terminals each set with a garnet cabochon, accented by 3.3mm - 3.6mm cultured pearls and brilliant-cut diamonds, *diamonds approx. 0.30ct total, maker's mark AJ, London hallmark, inner diameter 5.7cm*

£1,000 - 1,500

€1,100 - 1,700

21 ^Ω

A DIAMOND DRESS RING

Of elongated wraparound design, pavé-set to the front with brilliant-cut diamonds, *diamonds approx. 0.75ct total, ring size O*

£800 - 1,200

€910 - 1,400

22

A PINK SAPPHIRE RING AND A DIAMOND RING

Both of bombé form pavé-set to the front with circular-cut pink sapphires or brilliant-cut diamonds, *diamonds approx. 2.60cts total, ring sizes: pink sapphire ring L, diamond ring M (2)*

£1,600 - 1,800

€1,800 - 2,000

23

A DIAMOND BRACELET

Designed as an alternating series of baguette and brilliant-cut diamond links, *diamonds approx. 3.05cts total, length 18.7cm*

£1,000 - 1,500

€1,100 - 1,700

24 ^Ω

A FANCY-COLOURED DIAMOND BANGLE

The bangle with an applied flowerhead set with brilliant-cut diamonds and similarly-cut diamonds of brown tint, *diamonds untested for natural colour, inner diameter 5.8cm*

£1,000 - 1,500

€1,100 - 1,700





25

A DIAMOND SINGLE-STONE RING

Set with a brilliant-cut diamond between tapered shoulders, *diamond approx. 1.00ct, ring size L*

£1,500 - 2,000 €1,700 - 2,300

26

A DIAMOND THREE-STONE RING

Set with a graduated row of brilliant-cut diamonds, mounted in 18 carat white gold, *diamonds 2.03cts total, partial UK hallmark, ring size M*

£2,000 - 2,500 €2,300 - 2,800

27

A DIAMOND SINGLE-STONE PENDANT

The brilliant-cut diamond, weighing 1.23 carats, suspended from a box-link chain, mounted in 18 carat white gold, *London import mark, length 45.6cm*

£2,000 - 2,500 €2,300 - 2,800

28

A PAIR OF DIAMOND EARSTUDS

Each set with a brilliant-cut diamond, mounted in 18 carat white gold, *diamonds approx. 1.00ct total, partial UK hallmark, European convention mark*

£1,000 - 1,500 €1,100 - 1,700

29

A PERIDOT AND DIAMOND CLUSTER RING

The cushion-shaped peridot within a surround of brilliant-cut diamonds, the shoulders partially-set with similarly-cut diamonds, *diamonds approx. 0.60ct total, ring size O*

£1,800 - 2,000 €2,000 - 2,300

30

A RUBY AND DIAMOND LINE BRACELET

Set with a row of circular-cut rubies interspersed at intervals with old brilliant-cut diamonds, *diamonds approx. 1.70cts total, length 17.8cm*

£5,000 - 7,000 €5,700 - 7,900

Accompanied by a report from GCS stating that the rubies are natural, of Burmese origin, with no indications of heating. Report number 78154-78, dated 8th May 2018.



31 ^Ω

A PAIR OF DIAMOND FLOWER EARRINGS

Each flowerhead of bicoloured design, the brushed petals and bombé centre set with brilliant-cut diamonds, the petals accented by similarly-cut diamond borders, *diamonds approx. 3.05cts total, length 3.5cm*

£1,200 - 1,800 €1,400 - 2,000

32 ^Ω

A DIAMOND NECKLACE, BY OROMALIA

The curb-link chain to a clasp designed as a polished buckle, accented by brilliant-cut diamonds, *signed Oromalia, length 47.7cm*

£1,100 - 1,300 €1,200 - 1,500

33

A DIAMOND DRESS RING

The brilliant-cut diamond, weighing 9.99 carats, within an openwork foliate mount with single-cut diamond accents, *remaining diamonds approx. 0.55ct total, ring size K*

£2,000 - 3,000 €2,300 - 3,400

34

A PAIR OF MID 20TH CENTURY DIAMOND EARRINGS

Of scroll design, set throughout with brilliant-cut diamonds, *diamonds approx. 2.05cts total, length 2.2cm*

£2,000 - 3,000 €2,300 - 3,400

These earrings featured as lot 35 in the white glove auction, "Exceptional Jewelry from the Estate of Francoise Hermann", on the 27th April 2004 at Bonhams LA and San Francisco.

35

AN AMETHYST, PERIDOT AND DIAMOND BANGLE

The hinged bangle set to the front with circular amethyst cabochons and oval peridot cabochons, with brilliant-cut diamond highlights, *French assay mark, inner diameter 5.6cm*

£1,500 - 2,000 €1,700 - 2,300





36

37



36

A PAIR OF CULTURED PEARL AND DIAMOND NOVELTY EARRINGS

Each 17.0mm - 17.1mm baroque-shaped cultured pearl set with a brilliant-cut diamond and beak to form a duck, *length 1.8cm*

£1,000 - 1,500

€1,100 - 1,700

37

A DIAMOND 'JUSTE UN CLOU' RING, BY CARTIER

Designed as an 18 carat rose gold nail, accented by brilliant-cut diamonds, *signed Cartier, maker's mark, numbered, Swiss assay mark, French assay mark, European convention mark, ring size J*

£800 - 1,200

€910 - 1,400

38 ^Ω

A GEM-SET NECKLACE AND BRACELET SUITE

The fancy-link chain set at intervals with vari-cut gemstones, including amethyst and rose quartz, in textured settings with scrollwork claws, the bracelet en suite, *lengths: necklace 82.7cm, bracelet 22.1cm (2)*

£800 - 1,200

€910 - 1,400



38





39

A DIAMOND SINGLE-STONE RING

Set with a brilliant-cut diamond, mounted in platinum, *diamond approx. 2.60cts, partial UK hallmark, European convention mark, ring size K*

£7,000 - 9,000 €7,900 - 10,000

Accompanied by a report from IDRC stating that the diamond is G/H colour, SI1 clarity. Report number 5063, dated 22nd June 2017.

40

A DIAMOND TORSADE

The multi-strand torsade composed of rough diamond beads of green and yellow tint, *diamonds untested for natural colour, length approx. 45.0cm*

£1,500 - 2,000 €1,700 - 2,300

41

A SAPPHIRE AND DIAMOND NECKLACE

The double-row cable-link chain set at intervals with vari-coloured oval-shaped sapphires and brilliant-cut diamonds, the flowerhead to the front with pear-shaped vari-coloured sapphire petals, the stamen set with brilliant-cut diamonds, suspending a fringe of vari-coloured oval-shaped sapphires and brilliant-cut diamonds, *diamonds approx. 1.90cts total, French import mark, lengths: chain 40.2cm, drop 9.0cm*

£3,000 - 4,000 €3,400 - 4,500

39

42

A DIAMOND DRESS RING

Of bombé form, pavé-set to the front with brilliant-cut diamonds, *diamonds approx. 2.00cts total, ring size O*

£1,200 - 1,500 €1,400 - 1,700

43

A PAIR OF DIAMOND EARCLIPS, BY DE GRISOGONO

Each formed as an articulated lobe accented by rows of brilliant-cut diamonds, *diamonds approx. 4.60cts total, signed de Grisogono, numbered, hinged post fittings, length 3.7cm*

£3,000 - 4,000 €3,400 - 4,500

44

A DIAMOND SINGLE-STONE RING

Set with an old brilliant-cut diamond to a bombé mount with reeded detail, *diamond approx. 2.25cts, ring size L*

£2,000 - 3,000 €2,300 - 3,400



44



46



45

41

45

A DIAMOND RING

Set with a brilliant-cut diamond between shoulders set with two rows of brilliant-cut diamonds, mounted in platinum, *principal diamond approx. 1.52cts, remaining diamonds approx. 1.20cts, partial UK hallmark, ring size N*

£3,000 - 4,000 €3,400 - 4,500

Accompanied by a report from IDRC stating that the diamond weighing approximately 1.52 carats is I colour, SI1 clarity. Report number 5771, dated 5th April 2018.

46

A PAIR OF DIAMOND EARSTUDS

Each set with a step-cut diamond, *diamonds approx. 1.00ct total*

£800 - 1,200 €910 - 1,400

47

A DIAMOND RING AND A DIAMOND ETERNITY RING

1st: Set with a marquise-cut diamond between shoulders set with brilliant-cut diamonds, mounted in 18 carat white gold, 2nd: Set with a continuous row of brilliant-cut diamonds, *principal diamond approx. 1.50cts, remaining diamonds approx. 1.90cts total, 1st with London hallmark, both ring size L (2)*

£2,500 - 3,000 €2,800 - 3,400

Accompanied by a report from IDRC stating that the principal diamond is H/I colour, SI clarity. Report number 5065, dated 22nd June 2017.

48

THREE PAIRS OF GEM-SET PENDENT EARRINGS, BY GARRARD

Each 9.5mm or 9.6mm cultured pearl, turquoise or amethyst drop suspended from a fleur-de-lys surmount, set with rose-cut diamonds, the turquoise and amethyst earrings mounted in 18 carat yellow gold, *all with maker's marks, turquoise and amethyst earrings with London hallmarks, lengths approx. 3.5cm* (3)

£800 - 1,200

€910 - 1,400

49

AN AQUAMARINE AND DIAMOND RING, BY GAVELLO

Set with a cushion-shaped fancy-cut aquamarine, the stylised mount accented by brilliant-cut diamonds, *diamonds approx. 2.10cts total, signed Gavello, ring size K*

£1,500 - 2,000

€1,700 - 2,300

50

A 'LOVE' BANGLE, BY ALDO CIPULLO FOR CARTIER, CIRCA 1970

The polished oval band decorated throughout with screwhead motifs, *signed Cartier and Aldo Cipullo, inner diameter 5.7cm, accompanied by an unassociated screwdriver* (2)

£2,000 - 3,000

€2,300 - 3,400

Aldo Cipullo designed the iconic 'Love' bangle for Cartier in 1969. According to the vendor, this bangle was purchased from Cartier in New York for her birthday in 1976.

51

A PAIR OF DIAMOND EARCLIPS, BY SCHLUMBERGER FOR TIFFANY

Each bombé cluster of brilliant-cut diamonds within a reeded surround decorated with polished crosses, *diamonds approx. 2.30cts total, signed Tiffany & Co., Schlumberger studios, length 2.5cm*

£3,000 - 4,000

€3,400 - 4,500





52

A DIAMOND 'SHAFT' PENDANT, BY THEO FENNEL

The 18 carat gold baton pavé-set with brilliant-cut diamonds, *diamonds approx. 1.60cts total, maker's mark 'TF', London hallmark, length 4.8cm*

£800 - 1,200

€910 - 1,400

53

A GEM-SET NECKLACE, BY GARRARD

The cable-link chain with three swags to the front, each suspending a fringe of 5.2mm - 10.1mm cultured pearls, aquamarines and turquoise drops, to a G-shaped clasp with a 9.6mm x 12.0mm cultured pearl drop, mounted in 18 carat yellow gold, *signed Garrard, maker's mark, London hallmark, length 39.6cm, maker's pouch*

£1,500 - 2,000

€1,700 - 2,300

54

A PAIR OF DIAMOND EARRINGS

Each bombé plaque pavé-set with brilliant-cut diamonds, decorated with a polished cross, *diamonds approx. 1.95cts total, length 1.8cm*

£1,000 - 1,500

€1,100 - 1,700

55

A FANCY COLOURED DIAMOND RING, BY BOODLE & DUNTHORNE

Set with a princess-cut Fancy Intense Yellow diamond, weighing 1.21 carats, mounted in 18 carat yellow gold, *maker's mark B&D, London hallmark, ring size P*

£4,000 - 6,000

€4,500 - 6,800

56

A RUBY AND DIAMOND BEE BROOCH

Realistically modelled as a bee, the eyes accented by circular-cut rubies, the thorax and abdomen pavé-set with single-cut diamonds, *diamonds approx. 0.80ct total, indistinct maker's mark, length 3.1cm*

£800 - 1,200

€910 - 1,400



58

57

A SAPPHIRE AND DIAMOND CLUSTER RING

The oval-cut sapphire within a brilliant-cut diamond surround, *diamonds approx. 0.60ct total, ring size M½*

£1,500 - 2,000 €1,700 - 2,300

58

A MID 20TH CENTURY DIAMOND NECKLACE, BY CARTIER

The front of interlocking knot design, set with brilliant-cut diamonds, to a fancy-link chain, *diamonds approx. 2.30cts total, signed Cartier Paris, numbered, length 37.5cm*

£2,000 - 3,000 €2,300 - 3,400

57



59



59



59

A GEM-SET BROOCH AND A PAIR OF GEM-SET EARRINGS, BY LALAOUNIS

1st: Designed as a floral spray, the flowerheads set with clusters of circular-cut emeralds and sapphires, accented by brilliant and single-cut diamonds, 2nd: Each textured swirl set with circular-cut emeralds and single-cut diamonds, *diamonds approx. 0.55ct total, 1st with maker's mark, 2nd signed Ilias Lalaounis, lengths: brooch 7.0cm, earrings 3.2cm, maker's case (2)*

£3,000 - 4,000 €3,400 - 4,500

60

A GOLD FANCY-LINK BRACELET, BY BOODLE & DUNTHORNE, 1975

The 18 carat yellow gold bracelet of woven strap design, *maker's mark B&D, London hallmark, length 18.0cm, maker's case*

£1,500 - 2,000 €1,700 - 2,300

60





61

61

A PAIR OF EMERALD, SAPPHIRE AND DIAMOND EARCLIPS

Each designed as a trio of clusters, set with a central emerald cabochon within surrounds of circular sapphire cabochons and brilliant-cut diamonds, ropetwist detail throughout, *diamonds approx. 4.70cts total, length 4.0cm*

£2,000 - 3,000 €2,300 - 3,400

62

AN ENAMEL AND GEM-SET BROOCH

Designed as a bird of paradise, the eye set with a marquise-shaped ruby, the head feathers set with circular-cut sapphires, the body and tail decorated with green and blue enamel, with single-cut diamond highlights, *some enamel damage, length 9.3cm*

£1,000 - 1,500 €1,100 - 1,700

This lot is to be sold without reserve.

63

A SAPPHIRE AND DIAMOND BROOCH

Of openwork foliate design, set with an oval-cut diamond, weighing 1.52 carats, with marquise-cut sapphire and brilliant-cut diamond highlights, *pin with partial French import mark, length 4.5cm*

£2,000 - 3,000 €2,300 - 3,400



62



63



64

64

A LAPIS LAZULI WHISTLE PENDANT, BY CARTIER, CIRCA 1977

The 18 carat yellow gold whistle with polished panels of lapis lazuli, *signed Cartier, maker's mark, numbered, UK import mark, length 4.9cm, maker's case*

£1,500 - 2,000 €1,700 - 2,300

65

AN ENAMEL AND DIAMOND BANGLE

Of double bombé form, the whole decorated in blue guilloché enamel, with brilliant-cut diamond highlights, *diamonds approx. 0.45ct total, inner diameter 5.5cm*

£2,000 - 3,000 €2,300 - 3,400



65



66
A TIGER'S EYE AND DIAMOND DRESS RING, BY BOUCHERON, CIRCA 1970

The polished hemispherical tiger's eye with applied trefoil motifs, set with brilliant-cut diamonds, *diamonds approx. 0.55ct total, signed Boucheron Paris, numbered, French assay mark, ring size M*

£2,500 - 3,000 €2,800 - 3,400

67
A PAIR OF EARRINGS, BY ZOLOTAS

Each hoop with bead and ropetwist decoration, terminating with a lion's head, *signed Zolotas, length 3.4cm*

£800 - 1,200 €910 - 1,400

68
A COIN NECKLACE AND A PAIR OF COIN EARCLIPS

1st: The flattened curb-link chain set to the front with an ancient Greek coin, circa 130BC, depicting writhing snakes, 2nd: Each earclip set with a Roman coin, depicting the head of a man, to a tiered surmount set with brilliant-cut diamonds, *lengths: necklace 41.0cm, coin diameter approx. 2.9cm, earclips 4.0cm, coin diameter approx. 1.6cm (2)*

£1,500 - 2,000 €1,700 - 2,300

69
A GEM-SET RING, BY LALAOUNIS

Designed as a stylised bull, set with circular-cut rubies and sapphires, with brilliant-cut diamond highlights, to an openwork band of circle design, *signed Lalaounis, maker's mark, ring size L*

£1,000 - 1,500 €1,100 - 1,700

70
A RUBY AND SAPPHIRE RING, BY LALAOUNIS

Realistically modelled as a ram's head, the eyes set with circular-cut rubies, the head accented by similarly-cut rubies and sapphires, the stylised body with ropetwist decoration, *signed Ilias Lalaounis, maker's mark, ring size approx. H*

£800 - 1,200 €910 - 1,400

71^Y
A CORAL NECKLACE AND EARCLIP SUITE

Designed as a multi-strand coral *corallium rubrum* bead torsade, the front of textured loop design, with bead and ropetwist decoration, the earrings en suite, *lengths: necklace 49.0cm, earclips 4.2cm (2)*

£2,500 - 3,000 €2,800 - 3,400

According to family tradition, purchased by the vendor from Zolotas Athens circa 1982-1985.

This lot will be subject to USA Fish and Wildlife regulations if it is to be imported into the USA.



71

72

A DIAMOND BOW BROOCH

Realistically modelled as a bow, inlaid with brilliant-cut diamonds, with a similarly-set knot to the centre, *diamonds approx. 2.80cts total, length 6.0cm*

£2,000 - 2,500

€2,300 - 2,800

73

A PINK SAPPHIRE AND DIAMOND CLUSTER RING

The oval-cut pink sapphire within a surround of brilliant-cut diamonds, *diamonds approx. 2.15cts total, ring size L*

£1,500 - 2,000

€1,700 - 2,300

74

A RUBY AND DIAMOND BRACELET

Of bicoloured design, the fancy-links set with circular-cut rubies and single and old brilliant-cut diamonds, *length 19.5cm*

£1,200 - 1,500

€1,400 - 1,700

75

A RUBY AND DIAMOND BRACELET WATCH, BY LONGINES, 1957

The circular dial with baton and Arabic chapters, on a woven strap with palmier-link borders, the clasp set with circular-cut ruby and brilliant-cut diamond clusters, mounted in 18 carat yellow gold, *dial and movement signed Longines, case and clasp with London hallmarks (latter rubbed), length 23.2cm, maker's case*

£2,500 - 3,000

€2,800 - 3,400

76

A SEED PEARL BROOCH, CIRCA 1945

Designed as three ears of wheat, each set with a cluster of seed pearls, *length 11.0cm*

£800 - 1,200

€910 - 1,400

77

A DIAMOND OWL BROOCH

Realistically modelled as an owl perched upon a branch, the body set throughout with brilliant-cut diamonds, the eyes accented by circular ruby cabochons, the beak set with carved onyx, *brilliant-cut diamonds approx. 2.50cts total, assay mark for Vienna, maker's mark, composite, length 4.3cm*

£3,000 - 3,500

€3,400 - 4,000





78



79



80



81



78

A DIAMOND BRACELET, BY BOUCHERON, CIRCA 1964

Designed as a continuous series of curved openwork panels, each set with a trio of brilliant-cut diamonds, mounted in 18 carat yellow gold, *diamonds approx. 6.70cts total, signed Boucheron, London import mark, length 17.0cm*

£3,000 - 5,000 €3,400 - 5,700

79

A PAIR OF SAPPHIRE AND DIAMOND EARCLIPS, CIRCA 1985

Of flowerhead design, each tiered cluster set with circular-cut sapphires and brilliant-cut diamond accents, the petals set with similarly-cut diamonds, mounted in 18 carat white and yellow gold, *UK import marks, diameter 1.9cm*

£1,000 - 1,500 €1,100 - 1,700

80

A GEM-SET COMPACT, BY BUCCELLATI, CIRCA 1960

Of brushed tricoloured design, with applied rosettes set with circular ruby and sapphire cabochons, opening to reveal a mirrored compact, *signed Buccellati, dimensions 6.9cm x 7.0cm, maker's case*

£2,000 - 2,500 €2,300 - 2,800

81^Y

A CORAL AND DIAMOND RING AND EARCLIP SUITE, CIRCA 1960

Set with an oval coral *corallium rubrum* cabochon within a scalloped surround of single-cut diamonds, to a ropetwist border, the earclips en suite, *diamonds approx. 0.75ct total, ring size N, earclip length 2.6cm (2)*

£1,500 - 2,000 €1,700 - 2,300

This lot will be subject to USA Fish and Wildlife regulations if it is to be imported into the USA.

82 - 83
No lots



85

84

AN EMERALD AND DIAMOND BROOCH

Designed as two roses, one set throughout with brilliant-cut diamonds, the other set throughout with treated yellow brilliant-cut diamonds, the leaves set with calibr  -cut emeralds, *diamonds approx. 2.90cts total, treated yellow diamonds approx. 3.20cts total, length 8.5cm*

  2,000 - 3,000

  2,300 - 3,400

85

A PERIDOT BEAD NECKLACE

The four strands of graduated peridot beads interspersed with polished beadwork spacers, *length of shortest strand 62.5cm*

  2,000 - 3,000

  2,300 - 3,400



87



88



89



90



91

86

AN OPAL AND DIAMOND CLUSTER RING

The oval opal cabochon within a scalloped surround of brilliant-cut diamonds, *diamonds approx. 0.45ct total, ring size L*

£1,000 - 1,500 €1,100 - 1,700

87

A PAIR OF GEM-SET EARRINGS

Each designed as a series of heart-shaped links, set with vari-coloured heart-shaped gemstones including aquamarine, amethyst and citrine, highlighted by brilliant-cut diamonds, *diamonds approx. 2.20cts total, length 7.8cm*

£1,500 - 2,000 €1,700 - 2,300

88

A DIAMOND LOCKET NECKLACE

The textured heart-shaped locket set centrally with a similarly-shaped diamond, within a scalloped border of brilliant-cut diamonds, suspended from a flattened curb-link chain, *principal diamond approx. 0.95ct, remaining diamonds approx. 2.90cts total, lengths: pendant 4.0cm, chain 43.4cm (2)*

£4,000 - 6,000 €4,500 - 6,800

89

A PAIR OF AMETHYST AND DIAMOND EARRINGS

Each octagonal-cut amethyst within a fluted surround, accented by graduations of brilliant-cut diamonds, *diamonds approx. 1.00ct total, length 1.8cm*

£800 - 1,200 €910 - 1,400

90

A GEM-SET 'TENTATION MACARON' RING, BY BOUCHERON

Designed as a bicoloured macaron, set with circular-cut citrines, the filling set with circular-cut orange sapphires, *signed Boucheron, numbered, rubbed maker's mark, French import mark, ring size P*

£2,000 - 3,000 €2,300 - 3,400

91

A DIAMOND DRESS RING, BY VHERNIER

Of bombé wraparound design, set with a central step-cut diamond, *diamond approx. 0.60ct, signed Vhernier, ring size N½*

£1,000 - 1,500 €1,100 - 1,700

92

A DIAMOND BANGLE

Of fluted knot design, highlighted by a row of brilliant-cut diamonds, *diamonds approx. 2.10cts total, length 6.3cm*

£1,800 - 2,200 €2,000 - 2,500



92



93

A PAIR OF TURQUOISE AND DIAMOND EARCLIPS, BY BOIVIN, CIRCA 1960

Each oval turquoise cabochon surmounted by tiered single-cut diamond leaves, *diamonds approx. 0.40ct total, maker's marks RB, French assay marks, length 2.0cm*

£1,000 - 1,500 €1,100 - 1,700

94

AN EMERALD AND DIAMOND CLUSTER RING, CIRCA 1966

Set with three brilliant-cut diamonds between two undulating rows of calibré-cut emeralds and further brilliant-cut diamonds, mounted in 18 carat white gold, *diamonds approx. 1.10cts total, London import mark, ring size I*

£1,000 - 1,500 €1,100 - 1,700

95

A RUBY AND DIAMOND NECKLACE/BROOCH, CIRCA 1960

Designed as an abstract spray with an articulated tassel, set throughout with single, brilliant and baguette-cut diamonds, with an oval ruby cabochon drop, to a fox-link backchain, the frontispiece detaching to form a clip brooch, *diamonds approx. 6.35cts total, lengths: brooch 7.1cm, necklace 39.5cm*

£3,000 - 4,000 €3,400 - 4,500

96

A RUBY AND DIAMOND DRESS RING

Set with an oval-cut ruby, within a radiating and tiered surround of tapered baguette and single-cut diamonds, *diamonds approx. 1.20cts total, ring size N*

£6,000 - 8,000 €6,800 - 9,100

Accompanied by a report from SSEF stating that the ruby weighing approximately 2.00 carats, is of Burmese origin, with no indications of heating. Report number 98779, dated 15th March 2018.

97

A DIAMOND BROOCH, BY BOUCHERON, CIRCA 1960

Of openwork form, the stylised ribbon set with baguette-cut diamonds, with brilliant-cut diamond cluster highlights, *diamonds approx. 6.50cts total, signed Boucheron, length 4.9cm*

£4,000 - 6,000 €4,500 - 6,800

98

A DIAMOND DRESS RING, CIRCA 1960

The old brilliant-cut diamond, weighing 2.06 carats, within an undulating surround of brilliant, marquise and baguette-cut diamonds, *remaining diamonds approx. 1.80cts total, ring size L½*

£5,000 - 7,000 €5,700 - 7,900

99

A CULTURED PEARL AND DIAMOND RING, CIRCA 1960

Set to the centre with a 10.7mm cultured pearl, within a scrolling surround set with single-cut diamonds, to a textured hoop, *diamonds approx. 0.40ct total, maker's marks, ring size I*

£800 - 1,000 €910 - 1,100

100

A PAIR OF NATURAL FRESHWATER PEARL AND DIAMOND EARCLIPS, BY GÜBELIN

Each natural freshwater pearl, measuring 10.70 x 8.12mm or 10.62 x 8.42mm, set within a scroll of marquise, baguette and tapered baguette-cut diamonds, *signed Gübelin, numbered, maker's marks, length 2.5cm*

£6,000 - 8,000 €6,800 - 9,100

Accompanied by a report from SSEF stating that the pearls are natural, freshwater. Report number 97889, dated 12 February 2018.

101

A RUBY AND DIAMOND DRESS RING

Designed as a tiered cluster of circular-cut rubies and brilliant-cut diamonds, *diamonds approx. 0.40ct total, ring size O½*

£1,200 - 1,500 €1,400 - 1,700

102

A RUBY AND DIAMOND DOUBLE-CLIP BROOCH, CIRCA 1950

The stylised ribbon bow set with baguette and brilliant-cut diamonds, issuing graduated rows of oval ruby cabochons, *diamonds approx. 6.00cts total, length 7.0cm*

£3,000 - 4,000 €3,400 - 4,500



99



100



98



101



102

103

AN EMERALD AND DIAMOND RING

Set with an octagonal step-cut emerald within a surround of brilliant-cut diamonds, *diamonds approx. 0.80ct total, ring size M*

£4,000 - 6,000 €4,500 - 6,800

104

A PAIR OF EMERALD AND DIAMOND EARRINGS

Each set with a pear-shaped emerald within a surround of brilliant-cut diamonds, *diamonds approx. 1.40cts total, length 2.4cm*

£2,500 - 3,500 €2,800 - 4,000

105

A DIAMOND NECKLACE AND BRACELET SUITE

The flattened curb-link chain set to the front with a curved geometric plaque set with brilliant-cut diamonds, the bracelet of similar design, *diamonds approx. 3.80cts total, lengths: necklace 39.3cm, bracelet 17.2cm (2)*

£2,000 - 3,000 €2,300 - 3,400

106

AN EMERALD AND DIAMOND RING

The step-cut emerald between two old brilliant-cut diamonds, with a row of single-cut diamonds to either side, *diamonds approx. 0.95ct total, ring size S*

£3,000 - 4,000 €3,400 - 4,500

107

AN EMERALD AND DIAMOND SPRAY BROOCH

The floral spray set throughout with single-cut diamond flowerheads, each set centrally with circular-cut emeralds or brilliant-cut diamonds, *diamonds approx. 1.15cts total, length 6.9cm*

£1,000 - 1,500 €1,100 - 1,700

108

AN EMERALD AND DIAMOND PENDANT

The step-cut emerald within a surround of brilliant-cut diamonds, *length 2.6cm*

£800 - 1,000 €910 - 1,100

109

A SAPPHIRE AND DIAMOND RING AND A PAIR OF DIAMOND EARCLIPS

1st: Of bicoloured design, the oval-cut sapphire set between two rows of brilliant-cut diamonds, 2nd: Of bombé design, each with a hemispherical panel of black enamel and white metal, with a central row of brilliant-cut diamonds, *diamonds approx. 2.00cts total, ring size M, earring length 2.1cm (2)*

£1,000 - 1,500 €1,100 - 1,700

110

AN EMERALD AND DIAMOND 'ZODIAC' RING, BY ELIZABETH GAGE, 1975

The tapering 18 carat bicoloured gold band with a central octagonal step-cut emerald, collet-set within a brushed recess decorated with polished beads and motifs for the Pisces star sign including fish and tridents, with brilliant-cut diamond accents, between polished and ropetwist borders, *signed Gage, London hallmark, ring size T*

£1,500 - 2,000 €1,700 - 2,300

111

A FANCY-LINK BRACELET

Designed as alternating series of polished and textured fancy-links, *length 18.6cm*

£2,500 - 3,000 €2,800 - 3,400

112

A PAIR OF RUBY AND DIAMOND EARCLIPS, BY FARAONE

Each designed as a bicoloured leaf set with circular-cut rubies and brilliant-cut diamonds, *diamonds approx. 0.30ct total, length 2.8cm*

£1,500 - 2,000 €1,700 - 2,300

105



104



103



106



108



107



110



111

105



112



109





113



114



116



115



113

A TURQUOISE AND DIAMOND FOB WATCH, BY D.F. BAUTTE & CO., GENEVA, CIRCA 1890

The circular dial with Roman numerals, with a bezel set with an alternating series of rose-cut diamonds and circular turquoise cabochons, the case decorated with navette-shaped turquoise cabochons and rose-cut diamonds, mounted in gold, *cuvette signed D.F. Bautte & Co., Geneva, French assay and import marks, numbered, length 4.4cm, original fitted case*

£1,000 - 1,500 €1,100 - 1,700

114

AN OPAL AND DIAMOND FLOWER BROOCH, CIRCA 1890

The carved opal pansy with an old brilliant-cut diamond highlight, *width 2.8cm*

£800 - 1,200 €910 - 1,400

115

A DIAMOND CRESCENT BROOCH, CIRCA 1880, AND AN EARLY 19TH CENTURY PASTE BROOCH

1st: Set throughout with cushion-shaped, old brilliant and rose-cut diamonds, mounted in silver and gold, 2nd: The central oval-cut paste within a concentric series of cushion-shaped pastes, foiled closed-back settings throughout, mounted in silver and gold, *1st: cushion-shaped and old brilliant-cut diamonds approx. 1.50cts total, 2nd: later brooch fitting, lengths: 1st 2.8cm, 2nd 2.6cm (2)*

£800 - 1,200 €910 - 1,400

116

AN EMERALD AND DIAMOND FLEUR-DE-LYS BROOCH, CIRCA 1880

Set throughout with rose-cut diamonds, accented with a graduated row of step-cut emeralds, mounted in silver and gold, *length 4.2cm*

£2,000 - 3,000 €2,300 - 3,400

117

AN EMERALD AND DIAMOND THREE-STONE RING

The step-cut emerald between two old brilliant-cut diamonds, each accented by rose-cut diamonds, the shoulders and gallery of scrollwork design, *diamonds approx. 0.90ct total, ring size M*

£1,800 - 2,500 €2,000 - 2,800

118

A SAPPHIRE FIVE-STONE RING

Designed as a graduated row of cushion-shaped and oval-cut sapphires, *ring size R*

£800 - 1,200 €910 - 1,400

117



118



120



119



121



119

A MID 19TH CENTURY DIAMOND AND ENAMEL NECKLACE

The fancy-link necklace with blue enamel terminals set with roses-cut diamonds, suspending an oval locket pendant decorated with blue guilloché enamel, with a rose and old brilliant-cut diamond lattice, the reverse glazed, mounted in gold, *lengths: pendant 5.0cm, chain 43.0cm (2)*

£800 - 1,200

€910 - 1,400

120

A GEM-SET BROOCH, CIRCA 1890

Designed as a bee, the eyes set with circular ruby cabochons, the abdomen set with a half-pearl, the thorax with circular-cut sapphires and rose-cut diamonds, and similarly-cut diamond wings, to a knifewire bar with bouton pearl terminals, mounted in silver and gold, *length 4.3cm*

£800 - 1,000

€910 - 1,100

121

AN ART NOUVEAU RUBY AND DIAMOND BROOCH/PENDANT, FRENCH, CIRCA 1900

Designed as an openwork lotus flower issuing scrolling petals, set with rose-cut diamonds and a circular-cut ruby, mounted in gold, *maker's marks AR, French assay marks, length 4.1cm*

£1,000 - 1,500

€1,100 - 1,700

122

A 19TH CENTURY GEM-SET BRACELET

Each repoussé link of acanthus leaf design, set with vari-cut rubies, emeralds and diamonds, mounted in gold, *diamonds approx. 0.80ct total, length 16.7cm*

£3,500 - 4,000

€4,000 - 4,500

123

A SAPPHIRE AND DIAMOND FIVE-STONE RING

Alternately-set with oval-cut sapphires and cushion-shaped diamonds, *diamonds approx. 1.15cts total, ring size K*

£800 - 1,200

€910 - 1,400

122



123



For details of the charges payable in addition to the final Hammer Price of each Lot please refer to paragraphs 7 & 8 of the Notice to Bidders at the back of the catalogue.



123A

123A
A CULTURED PEARL NECKLACE WITH A SAPPHIRE AND DIAMOND CLASP

The three strands of 5.7mm-9.3mm cultured pearls to a circular-cut sapphire, brilliant and single-cut diamond clasp, designed as an openwork flowerhead, *length of shortest strand 49.5cm*

£1,000 - 1,500 €1,100 - 1,700

124
A DIAMOND PENDANT/NECKLACE
Designed as two polished openwork plaques, set with brilliant-cut diamonds, to a box-link chain, *diamonds approx. 3.80cts total, lengths: pendant 5.2cm, chain 37.5cm (2)*

£1,500 - 2,000 €1,700 - 2,300

125
A DIAMOND-SET COLLAR
The flexible collar of brick-link design, set to the front with a uniform series of brilliant-cut diamonds, *diamonds approx. 1.05ct total, adjustable inner diameter approx. 11.0cm-12.3cm*

£1,200 - 1,500 €1,400 - 1,700

126
A DIAMOND PENDANT NECKLACE
The heart-shaped plaque pavé-set with brilliant-cut diamonds, the suspension loop similarly-set, suspended from an 18 carat white gold cable-link chain, *chain with partial UK hallmark, lengths: pendant 2.5cm, chain 45.7cm*

£800 - 1,200 €910 - 1,400

127
A GEM-SET PENDANT
Set to the centre with an oval emerald cabochon, within an openwork surround of vari-cut diamonds and circular ruby, emerald and sapphire cabochons, to a single-cut diamond surmount, *diamonds approx. 1.30cts total, length 4.6cm*

£4,000 - 6,000 €4,500 - 6,800

Accompanied by a report from GCS stating that the emerald, weighing approximately 2.00 carats is natural, of Colombian origin, with indications of moderate amount of oil in fissures. Report number 78143-33, dated 19th February 2018.

128
AN EMERALD RING
Set with an octagonal step-cut emerald, weighing 34.49 carats, *ring size N*

£4,000 - 6,000 €4,500 - 6,800

129
A PAIR OF DIAMOND EARSTUDS
Each set with a brilliant-cut diamond, *diamonds 2.06 carats total*

£3,500 - 4,000 €4,000 - 4,500

130
AN AQUAMARINE AND DIAMOND DRESS RING

Set with a graduated row of step-cut aquamarines, with a row of brilliant-cut diamonds to either side, *ring size N*

£800 - 1,000 €910 - 1,100

131
A DIAMOND THREE-STONE RING AND A PAIR OF DIAMOND EARRINGS

1st: Set with a graduated row of princess-cut diamonds, 2nd: Each set with a princess-cut diamond, *diamonds approx. 1.60cts total, ring size N½, earring length 0.5cm (2)*

£1,500 - 2,000 €1,700 - 2,300

132
AN EMERALD AND DIAMOND CLUSTER RING

The oval-cut emerald within a tiered surround of single-cut diamonds, *diamonds approx. 0.80ct total, Portuguese assay marks, ring size J*

£1,200 - 1,500 €1,400 - 1,700

133
A DIAMOND LINE BRACELET
Designed as a continuous row of oval-cut diamonds, *diamonds approx. 8.60cts total, length 16.7cm*

£6,000 - 6,500 €6,800 - 7,400

134
A DIAMOND RING
Set with a princess-cut diamond weighing 2.00cts, between shoulders set with brilliant-cut diamonds, mounted in 18 carat white gold, *remaining diamonds approx. 0.70ct total, London hallmark, ring size N*

£8,000 - 12,000 €9,100 - 14,000

Accompanied by a report from IDRC stating that the diamond weighing 2.00 carats is D/E colour, VVS clarity. Report number 3861, dated 31st October 2016.





136

135

138

137

135^Y

A MOTHER-OF-PEARL 'ALHAMBRA' NECKLACE, BY VAN CLEEF & ARPELS

The trace-link chain set throughout with mother-of-pearl quatrefoil plaques, *signed VCA, maker's mark, numbered, French assay mark, length 41.0cm, maker's box and certificate of authenticity*

£4,000 - 5,000 €4,500 - 5,700

This lot will be subject to USA Fish and Wildlife regulations if it is to be imported into the USA.

136

A 'HAPPY DIAMONDS' RING, BY CHOPARD

The 18 carat tricoloured gold ring with a central heart-shaped compartment, glazed to reveal a 'floating' brilliant-cut diamond, the shoulders pavé-set with similarly-cut diamonds, *diamonds approx. 1.15cts total, signed Chopard, European convention mark, Swiss assay mark, ring size P*

£1,000 - 1,500 €1,100 - 1,700

137

A COIN BRACELET

The sprung bracelet set to the front with a Roman coin, between lugs set with brilliant-cut diamonds, with circular ruby cabochon terminals, *inner diameter 6.0cm*

£1,000 - 1,500 €1,100 - 1,700

138

A DIAMOND RING

Set with a princess-cut diamond between two similarly-cut diamonds, *principal diamond approx. 1.00ct, ring size O½*

£1,200 - 1,500 €1,400 - 1,700



139



139



140

139^Y

A CORAL AND DIAMOND PENDANT, RING AND EARRING SUITE

The pendant designed as a circular coral *corallium rubrum* cabochon, inlaid with a brilliant-cut diamond, on a box-link chain, the ring and earrings en suite, *diamonds approx. 1.20cts total, pendant diameter 1.3cm, lengths: necklace 39.2, earrings 1.3cm, ring size O (3)*

£800 - 1,000

€910 - 1,100

This lot will be subject to USA Fish and Wildlife regulations if it is to be imported into the USA.

140

A HARDSTONE INTALGIO RING, BY BULGARI

Of double band design, each set with an oval hardstone intaglio depicting classical figures dated to the 2nd and 3rd centuries AD, *signed Bulgari Roma, ring size O*

£1,500 - 2,000

€1,700 - 2,300

141

A GOLD BRACELET, BY CARTIER

Designed as a continuous series of 18 carat yellow gold brick-links, *signed Cartier, numbered, maker's mark, French and Swiss assay marks, European convention mark, length 17.5cm*

£2,000 - 3,000

€2,300 - 3,400

142

A DIAMOND PENDANT, RING AND EARRING SUITE

Set with a heart-shaped diamond within a tiered polished surround, the ring and earrings en suite, *diamonds approx. 4.00cts total, lengths: pendant 1.7cm, earrings 1.3cm, ring size 1½ (3)*

£2,500 - 3,500

€2,800 - 4,000



141

142

142

144



145



143

143

A SAPPHIRE AND DIAMOND BROOCH

Of annular design, set throughout with circular-cut sapphires and single-cut diamonds, with ropetwist detailing, *diamonds approx. 0.90ct total, diameter 4.0cm*

£800 - 1,000

€910 - 1,100

144

A DIAMOND LONGCHAIN

Spectacle-set at intervals with brilliant-cut diamonds, *diamonds approx. 2.00cts total, length 60.5cm*

£2,000 - 3,000

€2,300 - 3,400

145

A PAIR OF SAPPHIRE AND DIAMOND PENDENT EARRINGS

Each pear-shaped drop of openwork design, set throughout with pear-shaped and oval-cut sapphires, with brilliant-cut diamond highlights, *diamonds approx. 1.30cts total, length 4.9cm*

£2,000 - 3,000

€2,300 - 3,400

147



148



146



146

A SAPPHIRE AND DIAMOND RING AND EARRING SUITE

The heart-shaped ring pavé-set to the centre with brilliant-cut diamonds, within a surround of calibré-cut sapphires, the earrings en suite, *diamonds approx. 0.30ct total, ring size N, earring width 1.6cm (2)*

£1,800 - 2,500

€2,000 - 2,800

147

A DIAMOND COCKTAIL WATCH, BY PALOMA PICASSO FOR TIFFANY, CIRCA 1984

The circular dial with dagger hands, with a bezel of openwork design, set with baguette, brilliant and single-cut diamonds, between brilliant-cut diamond lugs, on a black fabric strap, *diamonds approx. 1.40cts total, dial signed Tiffany & Co., Chopard maker's mark, case signed Paloma Picasso for Tiffany & Co., Swiss assay mark, adjustable length, accompanied by maker's pouch and box*

£2,000 - 3,000

€2,300 - 3,400

148

A DIAMOND SINGLE-STONE RING

Set with an old brilliant-cut diamond, *diamond approx. 1.20cts, ring size M*

£3,000 - 4,000

€3,400 - 4,500

For details of the charges payable in addition to the final Hammer Price of each Lot please refer to paragraphs 7 & 8 of the Notice to Bidders at the back of the catalogue.

149



150



151

149

A DIAMOND NECKLACE

Designed as a continuous series of millegrain-set brilliant-cut diamonds, *diamonds approx. 4.40cts total, length 41.2cm*

£1,000 - 1,500 €1,100 - 1,700

150

A PAIR OF DIAMOND HOOP EARRINGS

Each set with brilliant-cut diamonds, *diamonds approx. 4.95cts total, length 3.9cm*

£2,000 - 2,500 €2,300 - 2,800

151

AN AQUAMARINE, SAPPHIRE AND DIAMOND RING

The cushion-shaped aquamarine between shoulders set with calibré-cut sapphires and brilliant-cut diamonds, *diamonds approx. 0.45ct total, ring size M (sizing beads)*

£1,000 - 1,500 €1,100 - 1,700

152

A SAPPHIRE AND DIAMOND PENDANT, RING AND EARRING SUITE

The pendant set to the centre with an oval-cut sapphire, within a radiating surround of marquise and baguette-cut diamonds, the ring and earrings en suite, *diamonds approx. 5.80cts total, lengths: pendant 3.0cm, earrings 2.2cm, ring size O (3)*

£2,500 - 3,000 €2,800 - 3,400



152





153

153

A TANZANITE AND DIAMOND RING

Set to the centre with an oval-cut tanzanite, between brilliant-cut diamond shoulders, *ring size O½*

£800 - 1,200

€910 - 1,400



154

154

A SAPPHIRE AND DIAMOND NECKLACE, BY GRAFF

The frontispiece of openwork design, set with oval and pear-shaped sapphire cabochons, accented by calibré-cut sapphires and brilliant-cut diamonds, on a curb-link chain, *diamonds approx. 0.75ct total, signed Graff, length 36.4cm*

£4,000 - 6,000

€4,500 - 6,800



157

155

A GEM-SET BRACELET, 1980

Designed as a series of openwork navette-shaped panels set with brilliant-cut diamonds, alternating with trios of oval sapphire, ruby and emerald cabochons, mounted in 18 carat yellow gold, *diamonds approx. 1.90cts total, UK hallmark, length 18.0cm*

£1,200 - 1,500

€1,400 - 1,700

156

AN EMERALD AND DIAMOND RING

Set with an octagonal step-cut emerald, within a geometric surround of baguette-cut diamonds, *diamonds approx. 0.60ct total, ring size M*

£1,200 - 1,500

€1,400 - 1,700

Accompanied by a report from GCS stating that the emerald weighing approximately 1.10 carats is natural, of Colombian origin, with insignificant indications of clarity enhancement. Report number 78155-83, dated 24th May 2018.

157

A PERIDOT AND RUBY THREE-STONE DRESS RING

The collet-set cushion-shaped peridot, between two similarly-set oval ruby cabochons, mounted in 18 carat yellow gold, *partial UK hallmark, ring size O*

£1,000 - 1,500

€1,100 - 1,700



155

156



158

A SAPPHIRE AND RUBY RING

Of tapering design, set to the centre with an oval-cut sapphire, between two rows of step-cut rubies, mounted in 18 carat yellow gold, *partial UK hallmark, ring size N*

£800 - 1,200

€910 - 1,400

159

A PAIR OF DIAMOND EARSTUDS AND A PAIR OF SAPPHIRE EARSTUDS

1st: Each set with a cushion-shaped diamond, 2nd: Each set with an oval-cut sapphire, *diamonds approx. 0.70ct total, lengths: 1st 0.5cm, 2nd 0.9cm (2)*

£1,500 - 2,000

€1,700 - 2,300

160

A SAPPHIRE AND DIAMOND RING

Set to the centre with a pear-shaped sapphire, within a tiered surround of baguette and brilliant-cut diamonds, to a scrolling openwork hoop, *diamonds approx. 1.15cts total, ring size M*

£1,500 - 2,000

€1,700 - 2,300

161

A SAPPHIRE AND DIAMOND NECKLACE

The articulating necklace set to the front with a graduation of circular sapphire cabochons, between rose-cut diamond links, *length 40.5cm*

£2,500 - 3,000

€2,800 - 3,400

162

A TANZANITE AND GARNET RING, BY VEDURA

The cushion-shaped tanzanite with a similarly-shaped garnet to either side, within a wirework surround, between bifurcated shoulders, *ring size N*

£2,000 - 3,000

€2,300 - 3,400



165



163

164



163

A 19TH CENTURY EMERALD AND DIAMOND BUTTERFLY BROOCH

Mounted *en tremblant*, pavé-set throughout with cushion-shaped, old brilliant and single-cut diamonds, the eyes, antennae, body and wings accented by circular-cut emeralds, closed back settings throughout, *composite*, length 5.4cm

£2,000 - 3,000 €2,300 - 3,400

164 Y Φ

TWO PORTRAIT MINIATURE RINGS, CIRCA 1780-1800

1st: Set to the front with an oval miniature of a lady painted on ivory, within a seed pearl surround, mounted in silver and gold, 2nd: The pivoting hexagonal panel containing an ivory miniature depicting a cherub beside an oval plaque inscribed, *M & moi*, the reverse glazed to reveal the gilt-metal inscription, *Il vous la donne*, on a ground of plaited hair, mounted in gold, 2nd: with later hoop, ring sizes: 1st J, 2nd I (2)

£1,000 - 1,500 €1,100 - 1,700

The United States Government has banned the import of ivory into the USA.

165

A TRICOLOURED GOLD AND GEM-SET BROOCH, PENDANT AND BROOCH/PENDANT, CIRCA 1850

1st: The realistically modelled eagle depicted on an engraved branch with a foliate stem in its beak terminating with a circular-cut citrine within a seed pearl surround, the engraved branch suspending two foliate pampilles set with half-pearls, 2nd: The articulating pendant of similar design, with a circular-cut orange gemstone suspended at the centre, the branch and foliate swag suspending a trio of foliate pampilles set with half-pearls, 3rd: The brooch/pendant of tapering floral and foliate design terminating with a half-pearl pampille, *pearls untested*, 1st with repairs, 3rd composite with two leaves deficient, lengths: 1st 9.5cm, 2nd 7.3cm, 3rd 8.3cm (3)

£1,000 - 1,500 €1,100 - 1,700

The jewels in this lot may have originally formed part of one larger jewel or suite. Earlier examples of tricoloured gold jewels led to a vogue for much larger naturalistic pieces with realistic surface features. These features were achieved with a variety of chasing, engraving and matting techniques and the use of coloured gold alloys in a complex structure of soldered appliqué. The addition of copper produced rose gold, silver produced green and yellow was usually produced by the use of pure gold. Exceptional examples of these tricoloured naturalistic jewels can be found in the Hull Grundy Gift to the British Museum (see C. Gere and J. Rudoe, 2010, 'Jewellery in the Age of Queen Victoria', The British Museum Press, London, p.172, figs 128-129).

The jewels in this lot also feature the mid-19th century fashion for "pampilles". Various examples of jewellery with gem-set pampilles can be seen in the designs of French jeweller, Bapst (see H. Vever, 'La Bijouterie Française au XIXe Siècle', Paris, 1906, p.197)



166

A DIAMOND DRESS RING

The navette-shaped plaque set throughout with rose-cut diamonds in close-back settings, between fluted shoulders, *one diamond deficient, ring size P*

£800 - 1,200

€910 - 1,400

167

A DIAMOND TARGET BROOCH, CIRCA 1890

Of openwork design, set throughout with old brilliant-cut diamonds, mounted in silver and gold, *diamonds approx. 4.80cts total, length 2.8cm, cased by Thomas Smith & Sons, 28 Princes St, Edinburgh*

£1,800 - 2,500

€2,000 - 2,800

168

A DIAMOND PLAQUE RING, CIRCA 1890

The navette-shaped plaque set throughout with cushion-shaped and old brilliant-cut diamonds, between foliate shoulders, *principal diamond approx. 1.30cts, remaining diamonds approx. 2.85cts total, ring size S½*

£2,000 - 3,000

€2,300 - 3,400

169

A THREE-STRAND CULTURED PEARL NECKLACE WITH A DIAMOND CLASP/BROOCH

The three strands of 6.5mm - 6.9mm cultured pearls to a clasp of target design, circa 1890, set throughout with old brilliant-cut diamonds, the clasp converting to a brooch or pendant, *principal diamond approx. 2.40cts, remaining diamonds approx. 5.50cts total, composite, accompanied by brooch fitting and screwdriver, length of shortest strand 36.2cm, brooch length 2.1cm (3)*

£5,000 - 7,000

€5,700 - 7,900

170

A DIAMOND BROOCH, CIRCA 1880

Of scrolling openwork design, set throughout with old brilliant-cut diamonds, mounted in silver and gold, *diamonds approx. 3.25cts total, later rhodium plating, length 3.0cm*

£1,500 - 2,000

€1,700 - 2,300

171

A DIAMOND BROOCH, CIRCA 1880

Of tiered openwork design, set throughout with rose and old brilliant-cut diamonds, mounted in silver and gold, *old brilliant-cut diamonds approx. 3.10cts total, French import mark, width 4.5cm*

£2,000 - 3,000

€2,300 - 3,400



172

A COLLECTION OF FIVE UNMOUNTED COLOURED DIAMONDS

1st: Accompanied by a report from GIA stating that the brilliant-cut diamond, weighing 0.56 carat, is natural Faint Green colour, SI1 clarity. Report number 2136297547, dated 23rd May 2012.

2nd: Accompanied by a report from GIA stating that the brilliant-cut diamond, weighing 0.56 carat, is natural Faint Yellow-Green colour, VS2 clarity. Report number 6147771376, dated 18th July 2012.

3rd: Accompanied by a report from GIA stating that the brilliant-cut diamond, weighing 0.34 carat, is natural Faint Pink colour, VS2 clarity. Report number 5116330078, dated 12th August 2010.

4th: Accompanied by a report from GIA stating that the marquise-cut diamond, weighing 0.62 carat, is natural Light Pink colour. Report number 2105993150, dated 5th August 2009.

5th: Accompanied by a report from GIA stating that the brilliant-cut diamond, weighing 0.42 carat, is natural Faint Pink colour, SI1 clarity. Report number 1132047743, dated 12th February 2011.

(5)

£3,500 - 4,500 €4,000 - 5,100



172

173

A SINGLE-STRAND CULTURED PEARL NECKLACE

The 7.6mm-13.3mm cultured pearls of grey tint, to a brushed and pierced ball clasp accented by single-cut diamonds, *length 49.3cm*

£1,000 - 1,500 €1,100 - 1,700

174

A BLACK DIAMOND AND DIAMOND CLUSTER RING, AND A PAIR OF BLACK DIAMOND AND DIAMOND EARSTUDS

1st: Centrally-set with an oval-cut treated black diamond, within a surround of brilliant-cut diamonds, 2nd: Each set with a circular-cut treated black diamond, within a surround of brilliant-cut diamonds, *diamonds approx. 0.50ct total, ring size L, earring length 1.1cm (2)*

£1,500 - 2,000 €1,700 - 2,300

175

A BLACK DIAMOND AND DIAMOND DRESS RING

Set with a cushion-shaped treated black diamond, between oblique shoulders set with brilliant-cut diamonds, *ring size N½*

£1,200 - 1,800 €1,400 - 2,000



177



176



178



179



180

176

A FANCY COLOURED DIAMOND AND DIAMOND CLUSTER RING

The Fancy Dark Yellowish Brown brilliant-cut diamond, weighing 5.17 carats, within a halo of brilliant-cut diamonds, the shoulders set with baguette-cut diamonds, *remaining diamonds approx. 1.35cts, ring size N*

£4,000 - 6,000

€4,500 - 6,800

Accompanied by a report from GIA stating that the diamond is natural Fancy Dark Yellowish Brown colour. Report number 1162917318, dated 9th January 2015.

177

A DIAMOND 'LUCIDA' RING, BY TIFFANY

Set with a step-cut diamond, weighing 1.00 carat, mounted in platinum, *signed Tiffany & Co., numbered, maker's mark, London hallmark, ring size J, maker's pouch, case, box and bag*

£3,500 - 4,500

€4,000 - 5,100

Accompanied by a Tiffany & Co. diamond certificate stating that the diamond is I colour, VVS1 clarity. Report number 17805983/E01150108.

178

A COLOURED DIAMOND AND DIAMOND PENDANT NECKLACE

Set with a pear-shaped diamond of yellow tint, within a frame of brilliant-cut diamonds, mounted in 18 carat white gold, on a foxtail-link chain, *principal diamond approx. 0.95ct total, remaining diamonds approx. 0.45ct total, principal diamond untested for natural colour, UK hallmark, lengths: chain 39.9cm, pendant*

£1,500 - 2,500

€1,700 - 2,800

179

A FANCY COLOURED DIAMOND AND DIAMOND RING

The heart-shaped Fancy Intense Yellow diamond, weighing 1.06 carats, between brilliant-cut diamond shoulders, *remaining diamonds approx. 0.30ct total, ring size M*

£3,000 - 4,000

€3,400 - 4,500

Accompanied by a report from IGI stating that the diamond is natural Fancy Intense Yellow colour, SI2 clarity. Report number F6F37194.

180

A DIAMOND SINGLE-STONE RING

Set with a brilliant-cut diamond, weighing 3.05 carats, *ring size M*

£9,000 - 12,000

€10,000 - 14,000



181



182



183



184



185

181

A RUBY AND DIAMOND DRESS RING

The navette-shaped plaque set throughout with old brilliant-cut diamonds, with an oval-cut ruby to the centre, the shoulders set with old brilliant-cut diamonds, *diamonds approx. 2.80cts total, ring size N*

£1,500 - 2,000 €1,700 - 2,300

182

A RUBY AND DIAMOND PENDANT

The trilliant-cut diamond within an openwork surround of calibré-cut rubies and old brilliant-cut diamonds, to a surmount set with similarly-cut diamonds, *diamonds approx. 1.15ct total, length 3.4cm*

£1,200 - 1,500 €1,400 - 1,700

183

A NATURAL PEARL, SEED PEARL AND DIAMOND PENDANT NECKLACE

The articulated openwork plaque with foliate and knifewire detail set with circular-cut sapphires, old brilliant and single-cut diamonds, with a 5.9mm pearl highlight, suspending a 14.3mm x 22.0mm natural pearl drop, the whole on a multi-strand seed pearl necklace, to a clasp set with old brilliant-cut diamonds, *old brilliant-cut diamonds approx. 0.80ct total, remaining pearls untested, one diamond deficient, lengths: necklace 46.2cm, pendant 7.0cm*

£3,000 - 4,000 €3,400 - 4,500

Accompanied by a report from The Gem & Pearl Laboratory stating that the principal pearl is natural, saltwater. Report number 06923, dated 27th December 2012.

184

A PINK TOURMALINE AND DIAMOND RING

The pink tourmaline sugarloaf cabochon between openwork shoulders of geometric design, set with brilliant and French-cut diamonds, *diamonds approx. 0.65ct total, French import mark, ring size M½*

£3,000 - 4,000 €3,400 - 4,500

185

AN EARLY 20TH CENTURY DIAMOND BAR BROOCH

The tapering pierced bar set with old brilliant and rose-cut diamonds, with a cushion-shaped diamond to either end, mounted in platinum, *principal diamonds approx. 3.48cts total, remaining old brilliant-cut and cushion-shaped diamonds approx. 0.35cts total, central diamond deficient, accompanied by detached brooch clasp, length 7.4cm (3)*

£2,500 - 3,500 €2,800 - 4,000



186

A DIAMOND PLAQUE RING

The openwork cartouche set throughout with old brilliant-cut and cushion-shaped diamonds, between similarly-cut diamond shoulders, *diamonds approx. 1.60cts total, ring size I½*

£1,500 - 2,000 €1,700 - 2,300

187

A NATURAL PEARL AND DIAMOND RING

The 10.7mm - 11.1mm x 8.6mm natural pearl of grey tint between two old brilliant-cut diamonds, *diamonds approx. 1.00ct total, ring size I*

£2,000 - 3,000 €2,300 - 3,400

Accompanied by a report from The Gem & Pearl Laboratory stating that the pearl is natural, saltwater. Report number 08944, dated 15th November 2013.

188

A CULTURED PEARL AND DIAMOND NECKLACE

The five rows of 6.7mm-7.9mm cultured pearls with a central plaque of openwork design, set with brilliant, old brilliant and rose-cut diamonds and two 5.8mm cultured pearl accents, *brilliant and old brilliant-cut diamonds approx. 1.30cts total, length 39.3cm*

£1,500 - 2,000 €1,700 - 2,300

189

A DIAMOND SINGLE-STONE RING

Set with a cushion-shaped diamond, *diamond very approx. 4.00cts, ring size K*

£4,000 - 6,000 €4,500 - 6,800

190

AN AQUAMARINE AND DIAMOND CLUSTER RING

The step-cut aquamarine within a scalloped surround of brilliant-cut diamonds, *diamonds approx. 1.10cts total, ring size P*

£1,500 - 2,000 €1,700 - 2,300



191
A CULTURED PEARL FRINGE NECKLACE AND BRACELET SUITE
 The ropetwist chain suspending a graduated fringe of cultured pearls, each to a fluted surmount, the bracelet en suite, *accompanied by a single earring of similar design, some cultured pearls deficient from bracelet, lengths: necklace 43.3, bracelet 18.8cm, earring 4.5cm (3)*

£1,000 - 1,500 €1,100 - 1,700

192
A RUBY AND DIAMOND RING
 Set with an oval-cut ruby, within a scrolling mount set with old brilliant and rose-cut diamonds, *old brilliant-cut diamonds approx. 0.30ct total, Austrian assay mark, ring size approx. K*

£1,500 - 2,000 €1,700 - 2,300

Accompanied by a report from GRS stating that the ruby weighing 1.81 carats (indicated by client) is natural, of Burmese origin, with no indication of thermal treatment. Report number GRS2015-037563.

193
A GEM-SET BROOCH/PENDANT
 Of openwork design, set with vari-cut rubies and emeralds, step and rose-cut diamonds, *step-cut diamonds approx. 0.40ct, length 3.5cm*

£1,000 - 1,500 €1,100 - 1,700

194
A PAIR OF NATURAL PEARL AND DIAMOND PENDENT EARRINGS
 The surmount plaque of openwork foliate design, set throughout with rose-cut diamonds, each with a detachable 11.3mm x 9.1mm or 11.2mm x 8.3mm natural pearl drop, *converted from a late 18th / early 19th century jewel, composite, length 6.0cm*

£3,000 - 5,000 €3,400 - 5,700

Accompanied by a report from GCS stating that the pearls are natural, saltwater, with no indications of treatment. Report number 7156-16, dated 24th May 2018.



191



194



195



196



197

195

AN EMERALD AND DIAMOND BROOCH/PENDANT

The openwork foliate and scrollwork cartouche set throughout with rose-cut diamonds and a circular-cut emerald, suspending an emerald cabochon drop, *length 7.0cm*

£3,000 - 5,000 €3,400 - 5,700

196

AN OPAL AND DIAMOND PENDANT NECKLACE

Set to the centre with a heart-shaped opal cabochon, within a double surround of brilliant-cut diamonds, to a bow surmount set with similarly-cut diamonds, *lengths: pendant 5.5cm, chain 50.5cm*

£2,500 - 3,000 €2,800 - 3,400

197

AN OPAL AND DIAMOND RING

The octagonal opal cabochon within a surround of brilliant-cut diamonds, *diamonds approx. 0.35ct total, ring size O*

£800 - 1,200 €910 - 1,400

198

A SEED PEARL AND EMERALD BRACELET

The multi-strand seed pearl bracelet with a central openwork floral panel, set with seed pearls and circular-cut emeralds, the spacers and clasp of similar design, *length 16.7cm*

£1,000 - 1,500 €1,100 - 1,700

199

A PINK STAR SAPPHIRE AND DIAMOND CLUSTER RING

The pink star sapphire cabochon in a closed back setting, within a surround of old brilliant-cut and cushion-shaped diamonds, between scrolling shoulders, *diamonds approx. 0.40ct total, ring size M½, cased by Payne & Son, 131 High Street, Oxford*

£3,000 - 4,000 €3,400 - 4,500

Accompanied by a report from GCS stating that the star sapphire, weighing approximately 4.00 carats, is natural, of Burmese origin, with no indications of heat treatment. Report number 78144-48, dated 20th March 2018.



198



199

For details of the charges payable in addition to the final Hammer Price of each Lot please refer to paragraphs 7 & 8 of the Notice to Bidders at the back of the catalogue.



200

201

202

200

A PAIR OF EARCLIPS, BY ZOLOTAS, AND A LAPIS LAZULI BEAD NECKLACE

1st: Each earclip of hammered fluted design, 2nd: The double-strand necklace designed as a series of alternating 11.8mm-12.0mm lapis lazuli beads with polished roundels, set to the front with a series of hammered and fluted spacers, *earclips signed Zolotas and numbered, lengths: 1st 4.6cm, 2nd 42.5cm (2)*

£1,500 - 2,000 €1,700 - 2,300

According to family tradition, purchased by the vendor from Zolotas Athens circa 1982-1985.

201

A DIAMOND SINGLE-STONE RING

Set with an old brilliant-cut diamond weighing 3.95 carats, *ring size N*

£8,000 - 10,000 €9,100 - 11,000

202

A PAIR OF CULTURED PEARL EARRINGS

Each 12.3mm-12.4mm cultured pearl drop of pink or golden tint suspending a 10.9mm cultured pearl drop of cream or pink tint, brilliant-cut diamond highlights throughout, *diamonds approx. 0.40ct total, length 3.7cm*

£800 - 1,200 €910 - 1,400

203

A LADY'S DIAMOND WRISTWATCH, BY OMEGA

The oval dial set with single-cut diamonds to the cardinal points, the bezel set with brilliant-cut diamonds, to a stylised brick-link bracelet, partially-set with brilliant-cut diamonds, mounted in 18 carat yellow gold, *diamonds approx. 1.20cts total, dial and clasp signed Omega, case and clasp numbered with maker's marks, Swiss assay marks and European convention marks, length 20.0cm*

£1,800 - 2,200 €2,000 - 2,500



203



204

A DIAMOND 'ALLEGRA' RING, BY DE GRISOGONO

The openwork band composed of tiered overlapping 'ribbons', three set to the front with brilliant-cut diamonds, *diamonds approx. 2.00cts total, signed De Grisogono, maker's mark, ring size R½*

£2,000 - 3,000 €2,300 - 3,400

205

A PAIR OF CULTURED PEARL AND ENAMEL EARRINGS, BY CHANEL

Each set with a trio of 5.4mm-7.2mm cultured pearls within a surround of black enamel and beadwork borders, *signed Chanel, numbered, maker's marks, French assay marks, length 2.5cm, maker's box*

£2,000 - 2,500 €2,300 - 2,800

206

A DIAMOND 'DOUBLE-C' RING, BY CARTIER

Designed as an 18 carat tricoloured gold band with single-cut diamond 'C' terminals, *signed Cartier, numbered, maker's mark, French and Swiss assay marks, European convention mark, ring size M, maker's case and certificate of authenticity*

£800 - 1,200 €910 - 1,400

207

A DIAMOND-SET COLLAR

The flexible collar of brick-link design, set to the front with a series of brilliant-cut diamonds, *diamonds approx. 0.50ct total, Portuguese assay mark, adjustable inner diameter approx. 11.3cm-13.0cm*

£1,200 - 1,500 €1,400 - 1,700

208

A 'C DE CARTIER' PENDANT NECKLACE, BY CARTIER

The interlocking C's set with brilliant-cut diamonds, suspended from a foxtail-link chain, *diamonds approx. 0.30ct total, signed Cartier, numbered, Swiss assay mark, European convention mark, lengths: chain 48.2cm, pendant 2.5cm, maker's case, box and bag*

£1,200 - 1,500 €1,400 - 1,700

209

A DIAMOND 'DOUBLE-C' BANGLE, BY CARTIER

Designed as an 18 carat tricoloured bangle with single-cut diamond 'C' terminals, the ring en suite, *diamonds approx. 0.45ct total, signed Cartier, maker's mark, numbered, French assay mark, inner diameter 6.0cm, maker's case (2)*

£2,500 - 3,000 €2,800 - 3,400



209

210 ^Y

THREE SINGLE-STRAND CORAL BEAD NECKLACES

Each designed as a series of barrel-shaped coral *corallium rubrum* beads, measuring 1st: 6.5mm-8.6mm, 2nd: 6.7mm-8.0mm, 3rd: 6.2mm-9.4mm, *lengths 1st: 74.5cm, 2nd: 75.5cm, 3rd: 71.5cm (3)*

£1,500 - 2,000 €1,700 - 2,300

This lot will be subject to USA Fish and Wildlife regulations if it is to be imported into the USA.

211

A DIAMOND RING

Set with a step-cut diamond weighing 2.22 carats, between similarly-cut diamond shoulders, *remaining diamonds approx. 0.45ct total, ring size L (sizing beads)*

£4,000 - 6,000 €4,500 - 6,800

212

A SAPPHIRE AND DIAMOND CLUSTER RING

The oval-cut sapphire within a surround of baguette and tapered baguette-cut diamonds, mounted in 18 carat white gold, *diamonds approx. 1.80cts total, UK hallmark, ring size L½*

£1,000 - 1,500 €1,100 - 1,700

213

A RUBY AND DIAMOND DRESS RING

Obliquely-set with a pear-shaped ruby and diamond, each within a surround of brilliant-cut diamonds, *diamonds approx. 0.60ct total, ring size L½*

£1,500 - 2,000 €1,700 - 2,300

214

AN ORANGE SAPPHIRE AND RUBY RING

The cushion-shaped orange sapphire between two oval-cut rubies, *ring size M*

£2,000 - 3,000 €2,300 - 3,400

215

A SAPPHIRE AND DIAMOND THREE-STONE RING

The octagonal step-cut sapphire between two brilliant-cut diamonds, *diamonds approx. 0.70ct total, ring size L½*

£1,000 - 1,500 €1,100 - 1,700

216

A SAPPHIRE AND DIAMOND CLUSTER RING, CIRCA 1987

The oval-cut sapphire within a tiered surround of brilliant-cut diamonds, mounted in 18 carat yellow gold, *diamonds approx. 0.90ct total, UK import mark, ring size N½*

£1,000 - 1,500 €1,100 - 1,700

217

A SAPPHIRE AND DIAMOND DRESS RING

Of bombé design, set with a cushion-shaped sapphire between trilliant-cut diamond shoulders, *diamonds approx. 0.75, ring size M*

£12,000 - 15,000 €14,000 - 17,000

Accompanied by a report from GRS stating that the sapphire weighing 11.09 carats (indicated by client) is natural, of Sri Lankan origin, with no indication of thermal treatment. Report number GRS2015-037540, dated 23rd March 2015.

Accompanied by a report from TGL stating that the sapphire weighing 11.09 carats is natural, with no evidence of heat treatment. Report number 13100659, dated 29 October 2003.

218

A PAIR OF DIAMOND EARRINGS, BY STEPHEN WEBSTER

Of openwork flame-like design, set throughout with brilliant-cut diamonds, *diamonds approx. 0.50ct total, maker's mark, length 2.7cm, maker's case and box*

£800 - 1,200 €910 - 1,400

219

A STAINLESS STEEL AND DIAMOND 'SERPENTI' WATCH, BY BULGARI

The expandable sprung bangle terminating with a circular dial, accented by single-cut diamond hourmarkers, *movement, case, bezel and bangle signed Bulgari, case numbered, length approx. 36.0cm*

£2,000 - 3,000 €2,300 - 3,400



210



211



212



216



217



213



215



214



218



219



220

220

**A CITRINE AND DIAMOND NECKLACE
AND PENDENT EARRING SUITE**

Designed as a continuous series of fancy-cut lozenge-shaped citrines, the front with brilliant-cut diamond spacers, the similarly-set front of star design, with brilliant-cut diamond highlights, the earrings en suite, *diamonds approx. 0.95ct total, lengths: drop 5.8cm, necklace 41.0cm, pendent earrings 6.0cm (2)*

£3,000 - 5,000 €3,400 - 5,700

221

**A TOPAZ AND RUBY BRACELET,
EARRING AND RING SUITE**

The articulating bracelet with a central baton accented by ruby cabochons, between heart-shaped blue topaz, to a bead-link bracelet, the earrings and ring en suite, *bracelet and earclips signed Gobet, lengths: bracelet 17.3cm, earrings 3.5cm, ring size P (3)*

£1,500 - 2,000 €1,700 - 2,300



221

For details of the charges payable in addition to the final Hammer Price of each Lot please refer to paragraphs 7 & 8 of the Notice to Bidders at the back of the catalogue.



222

222

**A HARDSTONE BEAD NECKLACE AND
EARCLIP SUITE**

The double-strand of treated magnesite turquoise beads, set to the front with a trio of hammered fluted beads, the earclips en suite, *lengths: shortest strand of necklace 42.2cm, earclips 2.8cm (2)*

£1,000 - 1,500 €1,100 - 1,700

According to family tradition, purchased by the vendor from Zolotas Athens circa 1982-1985

223

**A MID 20TH CENTURY FANCY-LINK
BRACELET, BY GEORGE L'ENFANT**

The flattened double ropetwist links accented by polished curb-link spacers, *maker's marks GL, French assay marks, length 21.3cm*

£1,200 - 1,500 €1,400 - 1,700



223

224

224

AN AQUAMARINE RING

Set with a cushion-shaped aquamarine, *ring size Q*

£800 - 1,200 €910 - 1,400

225

A PAIR OF CULTURED PEARL AND DIAMOND PENDENT EARRINGS

Each 13.4mm x 16.0mm or 13.7mm x 14.9mm cultured pearl drop suspended from an articulating openwork surmount, set with baguette, brilliant and single-cut diamonds, *diamonds approx. 1.35cts total, length 4.4cm*

£1,500 - 2,000 €1,700 - 2,300

226

AN AQUAMARINE AND DIAMOND RING

Set with a step-cut aquamarine between scrolled and bifurcated shoulders, set with brilliant and single-cut diamonds, *diamonds approx. 0.30ct total, ring size M½*

£1,000 - 1,500 €1,100 - 1,700



225



226

227

A SAPPHIRE AND DIAMOND LADY'S WRISTWATCH, BY JEAN PERRET, CIRCA 1950

The woven bracelet gathered at the centre by a circular dial with stud and baton hourmarkers, accented by circular-cut sapphires and brilliant-cut diamonds, *dial signed Jean Perret, case with Swiss assay mark, length 17.9cm*

£1,000 - 1,500 €1,100 - 1,700

228

AN EMERALD AND DIAMOND CLUSTER RING

Set with a step-cut emerald, framed by a surround of brilliant and trapezoid-cut diamonds, to a reeded hoop, *diamonds approx. 1.90cts total, ring size N*

£3,000 - 4,000 €3,400 - 4,500

Accompanied by a report from GCS stating that the emerald is natural, of Colombian origin, with minor amount of oil in fissures. Report number 78162-00, dated 14th June 2018.

229

A DIAMOND PENDANT

Of stylised spray design, set throughout with brilliant, old brilliant, baguette and marquise-cut diamonds, *diamonds approx. 14.60cts total, length 5.8cm*

£6,000 - 8,000 €6,800 - 9,100



229



227



228



230

A DIAMOND LINE NECKLACE

Designed as a graduated series of brilliant-cut diamonds, *diamonds approx. 10.40cts total, length 41.4cm*

£4,000 - 6,000 €4,500 - 6,800

231

A CULTURED PEARL AND DIAMOND DOUBLE-CLIP BROOCH, BY GARRARD, CIRCA 1955

Each clip of scroll design, set throughout with old brilliant and single-cut diamonds, with a central 11.1mm or 11.2mm cultured pearl, *diamonds approx. 5.55cts total, signed Garrard, length 3.4cm, maker's case*

£2,000 - 3,000 €2,300 - 3,400

232

AN EMERALD AND DIAMOND RING

The octagonal step-cut emerald within a surround of brilliant and baguette-cut diamonds, *diamonds approx. 0.60ct total, ring size K*

£5,000 - 7,000 €5,700 - 7,900

Accompanied by a report from GCS stating that the emerald, weighing approximately 3.80 carats, is natural, of Colombian origin, with a moderate amount of oil in fissures. Report number 78157-20, dated 25th May 2018.

233

A PAIR OF CULTURED PEARL AND DIAMOND PENDENT EARRINGS

Each 12.0mm or 12.2mm cultured pearl with a cap set with single-cut diamonds, suspended from a cluster of pear-shaped and brilliant-cut diamonds, *diamonds approx. 3.25cts total, length 3.9cm*

£1,200 - 1,500 €1,400 - 1,700



237



238



235



235



234

A GOLD AND ENAMEL MOURNING RING, CIRCA 1830

Set to the front with a glazed compartment with a black enamel border, the outer surround and shoulders chased with floral decoration, the underside of the compartment engraved, *Willm/ Flountham/ ob 5 Sept/ 1818 Oct 30*, mounted in gold, *ring size S*

£800 - 1,200

€910 - 1,400

235

FOUR RINGS, 16TH - 19TH CENTURY

1st: A gold ring, 16th - 17th century, the pyramidal setting and shoulders incised with a herringbone design, 2nd: A bronze ring, 17th century, the outer band with a continuous series of domed reliefs with beadwork decoration, the inside engraved, *LOVE GOD ONLIE*, 3rd: A gold band, 1835, 4th: A silver ring, 1787, the silver band hammered with a repeating star design, set to the front with a silver and gold heart-shaped plaque, 1st: *stone and enamel decoration deficient*, 2nd: *band cut*, goldsmith's mark *AR*, 3rd: *London hallmark*, goldsmith's mark *IV*, 4th: *UK hallmark*, *ring sizes: 1st K, 2nd approx. M, 3rd K 1/2, 4th E 1/2 (4)*

£1,200 - 1,500

€1,400 - 1,700

1st: This ring was found in Carlton and Chellington, Bedfordshire in January 2012. Under the stipulations of the Treasure Act 1996 and due to its age and metal content of a minimum of 10% precious metal, the ring qualifies as Treasure and has been disclaimed by the Crown.

236

A NATURAL PEARL NECKLACE WITH A GARNET AND DIAMOND CLASP

The single-strand of 4.7mm - 7.8mm cultured pearls, to a clasp set with a cushion-shaped garnet within a surround of rose-cut diamonds, *length 50.6cm*

£1,500 - 2,000

€1,700 - 2,300

Accompanied by a report from GCS stating that the pearls are natural, saltwater, with no indications of treatment. The necklace includes pearls under 3mm in size, these seed pearls may be either natural or cultured. Report number 78159-05, dated 5th June 2018.

237

AN ENAMEL AND DIAMOND RING, CIRCA 1795

The oval plaque of blue guilloché enamel within a rose-cut diamond border, with an applied similarly-cut diamond crown and initial *M*, in a closed-back setting, between trifurcated shoulders, mounted in silver and gold, *possible French assay mark*, *ring size R*

£1,500 - 2,000

€1,700 - 2,300

238

A 15TH CENTURY GOLD FINGER RING

The yellow gold band incised with cross-hatching, three heart motifs and three sets of initials, *ring size L*

£1,000 - 1,500

€1,100 - 1,700

This ring was found in Pavenham, Bedfordshire in February 2009. Under the stipulations of the Treasure Act 1996 and due to its age and metal content of a minimum of 10% precious metal, the ring qualifies as Treasure and has been disclaimed by the Crown.

For details of the charges payable in addition to the final Hammer Price of each Lot please refer to paragraphs 7 & 8 of the Notice to Bidders at the back of the catalogue.



234

236



239



241

239

A SAPPHIRE AND DIAMOND CLUSTER RING

The circular-cut sapphire and brilliant-cut diamond cluster between single-cut diamond shoulders, *diamonds approx. 0.50ct total, ring size K½*

£1,000 - 1,500 €1,100 - 1,700

240

A RUBY, SAPPHIRE AND DIAMOND BUTTERFLY BROOCH, CIRCA 1890

The thorax and abdomen set with a graduation of cushion-shaped rubies, with sapphire cabochon eyes and knifewire antennae terminating with old brilliant-cut diamonds, between cushion-shaped and old brilliant-cut diamond wings, accented by similarly-shaped and oval-cut rubies and sapphires, mounted in silver and gold, *one diamond deficient, diamonds approx. 2.60cts total, cased by Wartski Ltd, 138 Regent Street, London*

£3,000 - 4,000 €3,400 - 4,500

Accompanied by a report from GCS stating that the rubies are of Thai origin, with no indications of heating. Report number 78162-24, dated 12th June 2018.

241

A RUBY AND DIAMOND RING

The cushion-shaped ruby between similarly-shaped and old brilliant-cut diamond shoulders, *diamonds approx. 1.20cts total, ring size L½*

£2,500 - 3,000 €2,800 - 3,400

Accompanied by a report from GCS stating that the ruby is natural, of Thai origin, with no evidence of heat treatment. Report number 78158-85, dated 22nd May 2018.



240

242

A DIAMOND STAR BROOCH/PENDANT, CIRCA 1890

Designed as a six-rayed star with knifewire detailing, set throughout with rose and old brilliant-cut diamonds, mounted in silver and gold, *old brilliant-cut diamonds approx. 2.65cts, later rhodium plating, length 4.4cm*

£800 - 1,200 €910 - 1,400

243

A TOPAZ AND DIAMOND BANGLE, CIRCA 1900

The openwork knifewire bangle set to the front with a cushion-shaped orange topaz, accented by old brilliant-cut diamonds, mounted in gold, *diamonds approx. 0.70ct total, inner diameter 6.0cm*

£800 - 1,200 €910 - 1,400



242



243



244

246



247



245

244

A PAIR OF DIAMOND 'MAILLOIN PANTHÈRE' EARRINGS, BY CARTIER

The brick-link hoops set at intervals with brilliant-cut diamonds, mounted in 18 carat yellow gold, *signed Cartier, numbered, Swiss assay mark, European convention mark, length 1.8cm*

£1,000 - 1,500

€1,100 - 1,700

245

AN EMERALD AND DIAMOND CLUSTER RING

The oval-cut emerald within a surround of brilliant-cut diamonds, *diamonds approx. 1.20cts total, ring size M*

£1,500 - 2,000

€1,700 - 2,300

246

A DIAMOND PENDANT NECKLACE

The pear-shaped diamond of yellow tint within a surround of brilliant-cut diamonds, suspended from a cable-link chain, *principal diamond approx. 0.80ct, remaining diamonds approx. 0.40ct total, principal diamond untested for natural colour, lengths: chain 44.5cm, pendant 1.2cm*

£1,000 - 1,500

€1,100 - 1,700

247

A DIAMOND THREE-STONE RING

Set with a graduated row of old brilliant-cut diamonds, *diamonds approx. 2.00cts total, ring size 1½, cased by S.J. Phillips Ltd., London*

£2,500 - 3,000

€2,800 - 3,400

248

AN EMERALD AND DIAMOND CLUSTER RING

The octagonal-cut emerald, weighing 4.17 carats, within a brilliant-cut diamond surround, *diamonds approx. 0.40ct total, ring size O*

£3,000 - 5,000

€3,400 - 5,700

Accompanied by a report from The Gem & Pearl Laboratory stating that the emerald is natural, of Colombian origin, with minor clarity enhancement. Report number 15222, dated 23rd January 2018.

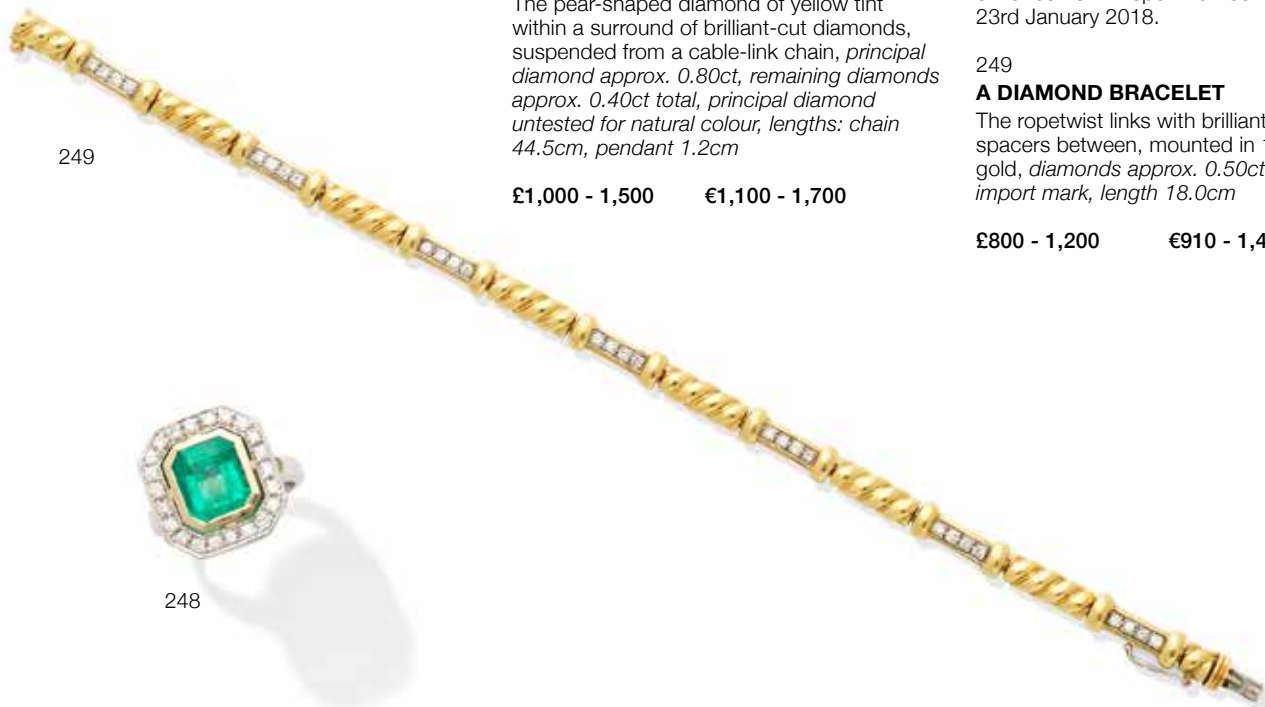
249

A DIAMOND BRACELET

The ropetwist links with brilliant-cut diamond spacers between, mounted in 18 carat yellow gold, *diamonds approx. 0.50ct total, UK import mark, length 18.0cm*

£800 - 1,200

€910 - 1,400



249



248



250

251

250

AN EMERALD AND DIAMOND BRACELET

Designed as a series of stylised foliate links set with step-cut emeralds, brilliant and baguette-cut diamonds, *diamonds approx. 14.25cts total, length 17.3cm*

£7,000 - 9,000 €7,900 - 10,000

Accompanied by a report from GCS stating that one emerald was tested and found to be of Columbian origin with moderate amount of oil in fissures. Report number 78162-02, dated 14th June 2018.

251

A PAIR OF GEM-SET PENDENT EARRINGS

Each treated green quartz drop suspended from an articulated surmount set with a central pink tourmaline cabochon, accented by brilliant-cut diamonds, *length 5.2cm*

£1,000 - 1,500 €1,100 - 1,700

252

A DIAMOND BANGLE, BY CARTIER

The trio of interlocking hoops set with a uniform series of brilliant-cut diamonds, mounted in 18 carat yellow gold, *diamonds approx. 4.50cts total, signed Cartier, numbered, maker's marks, French and Swiss assay marks, European convention mark, inner diameter 6.1cm*

£10,000 - 15,000 €11,000 - 17,000



252



253

253

A MID 20TH CENTURY GOLD AND DIAMOND NECKLACE, BRACELET AND PENDANT/BROOCH SUITE

The necklace and bracelet designed as a tapering series of sinuous textured links, the pendant/brooch, detachable, of similar design, with brilliant-cut diamond highlights, *diamonds approx. 0.90ct total, Austrian assay marks, accompanied by brooch fitting, lengths: necklace 36.0cm, bracelet 17.7cm, pendant/brooch 3.6cm (3)*

£5,000 - 7,000

€5,700 - 7,900

254

A DIAMOND DRESS RING

The bombé ring of openwork foliate design, set with old brilliant-cut diamonds, *diamonds approx. 1.70cts total, French assay mark, ring size T*

£800 - 1,200

€910 - 1,400

255

AN AMETHYST RING

Set with a step-cut amethyst, *ring size J*

£800 - 1,000

€910 - 1,100



253

255

254

256

A PAIR OF ENAMEL AND DIAMOND CUFFLINKS, BY CARTIER

Single-sided, each circular plaque decorated with orange guilloché enamel, with brilliant-cut diamonds to the centre, *signed Cartier, numbered, maker's marks, French assay mark, plaque diameter 1.3cm, maker's pouch*

£2,000 - 3,000 €2,300 - 3,400

257 ^Ω

A RUBY AND DIAMOND HAT BROOCH, BY TIFFANY, CIRCA 1960

Designed as a straw hat with ropetwist detailing and a floral spray set with circular-cut rubies and brilliant-cut diamonds, *signed Tiffany & Co. Italy, diameter 4.0cm*

£1,200 - 1,500 €1,400 - 1,700

258

A RUBY AND DIAMOND RING

Set to the front with a cushion-shaped ruby, with brilliant-cut diamonds at the cardinal points, between trifurcated shoulders, *ring size T*

£1,500 - 2,000 €1,700 - 2,300

Accompanied by a report from GRS stating that the ruby weighing approximately 0.87 carats is natural, of Burmese origin, with no indication of thermal treatment. Report number GRS2015-037546, dated 23rd March 2015.

259

A DIAMOND BUCKLE BRACELET, CIRCA 1950

Designed as a woven strap, the buckle highlighted with single-cut diamonds, *diamonds approx. 0.45ct total, Portuguese assay marks, length 18.5cm*

£1,500 - 2,000 €1,700 - 2,300





260



262



263



264



261

260

AN EARLY 20TH CENTURY PEARL AND DIAMOND PENDANT NECKLACE

The openwork knifewire cartouche with foliate detailing, set throughout with rose, old brilliant-cut and cushion-shaped diamonds, accented by a row of 3.0mm-3.5mm pearls, on a trace-link chain, mounted in platinum, *old brilliant cut and cushion-shaped diamonds approx. 0.50ct total, pearls untested, lengths: chain 44.2cm, pendant 4.6cm*

£1,500 - 2,000

€1,700 - 2,300

261

A NATURAL PEARL AND DIAMOND RING, BY VEVER, 1900

Set with a 6.80mm-7.16mm natural pearl and an old brilliant-cut diamond, between cushion-shaped diamond shoulders, *principal diamond approx. 1.25cts, signed Vever, French assay mark, ring size M*

£2,000 - 3,000

€2,300 - 3,400

Accompanied by a report from GCS stating that the pearl is natural, saltwater, with no indications of treatment. Report number 5776-8260, dated 20th December 2016.

262

AN EARLY 20TH CENTURY PEARL AND DIAMOND CROSS

The openwork Latin cross composed of single-cut diamond saltire crosses, set at intervals with 4.1mm-5.1mm pearls, to a surmount set with single-cut diamonds, mounted in platinum, *diamonds approx. 0.80ct total, pearls untested, one paste replacement, length 8.1cm*

£800 - 1,200

€910 - 1,400

263

A PAIR OF DIAMOND EARRINGS

Each with a cushion-shaped diamond, weighing 3.01 or 2.77 carats, in a pinched collet-setting

£7,000 - 10,000

€7,900 - 11,000

264

A RUBY AND DIAMOND BAR BROOCH, CIRCA 1920

Set to the centre with a graduated row of cushion-shaped rubies, accented by millegrain-set single-cut diamonds, mounted in platinum, *length 5.6cm, cased by Z. Barraclough & Sonds Ltd, Leeds*

£2,500 - 3,500

€2,800 - 4,000

Accompanied by a report from GCS stating that the rubies are natural, of Burmese origin, with no indications of heating. Report number 78162-04, dated 14th June 2018.

265

A DIAMOND LONGCHAIN, MOUNTED BY CARTIER, CIRCA 1915

The cable-link chain spectacle-set throughout with old brilliant-cut diamonds, mounted in platinum, *diamonds approx. 2.70cts total, French assay marks, length 103.1cm*

£2,500 - 3,500

€2,800 - 4,000

Accompanied by a copy of the original Cartier receipt stating that the diamonds in the longchain were mounted by Cartier Paris.

265



266

A JADE AND DIAMOND CLUSTER RING AND EARRING SUITE

The oval carved jade plaque within a surround of single-cut diamonds, the earrings en suite, *diamonds approx. 0.80ct total, ring size L, earring length 0.9cm*

£1,000 - 1,500 €1,100 - 1,700

Accompanied by a report from GCS stating that the jadeite jade is natural, wax impregnated. Report number 78162-01, dated 14th June 2018.

267

AN EARLY 20TH CENTURY DIAMOND BRACELET

Designed as a graduated row of old brilliant-cut diamonds interspersed with knifewire spacers accented by rose-cut diamonds, on an openwork fancy-link bracelet, mounted in platinum, *old brilliant-cut diamonds approx. 6.15cts total, accompanied by an extra link, length 16.2cm (2)*

£3,000 - 4,000 €3,400 - 4,500

268

A DIAMOND BROOCH, CIRCA 1930

The openwork brooch of geometric design, pavé-set throughout with brilliant, old brilliant and single-cut diamonds, *principal collet-set diamonds approx. 0.70ct, 1.15cts, 1.25cts, 1.30cts, and 0.70ct, remaining diamonds approx. 11.45cts total, length 7.0cm*

£7,000 - 9,000 €7,900 - 10,000

268

270

269

269

A DIAMOND DRESS RING, CIRCA 1925

Set with a central old brilliant-cut diamond, within a bombé surround of openwork geometric design set with similarly-cut diamonds, mounted in platinum, *principal diamond approx. 1.80cts, French assay marks, ring size M½*

£5,000 - 6,000 €5,700 - 6,800

270

A DIAMOND SINGLE-STONE RING

The step-cut diamond, weighing 2.27 carats, between shoulders set with graduated baguette-cut diamonds, *remaining diamonds approx. 0.30ct total, ring size G-J (hoop adjustable)*

£7,000 - 9,000 €7,900 - 10,000





271

A TOURMALINE AND DIAMOND BROOCH/PENDANT, 1973

Designed as a cluster of 18 carat yellow gold abstract and textured panels with bead detailing, set with step-cut green tourmalines and brilliant-cut diamonds, *diamonds approx. 0.60ct total, London hallmark, length 6.4cm*

£800 - 1,200 €910 - 1,400

272

A QUARTZ RING, BY DON COOPER

Set with a quartz crystal within an openwork scrolling mount, with a brilliant-cut diamond highlight, *signed Don Cooper, ring size approx. S*

£1,500 - 2,000 €1,700 - 2,300

273

A GARNET AND PERIDOT RING, BY PLEASANCE KIRK

The textured 18 carat yellow gold band of abstract design, highlighted by an oval garnet cabochon, with a peridot cabochon accent, *maker's mark PEK, London hallmark, ring size N, maker's case*

£800 - 1,200 €910 - 1,400

274

A DIAMOND SINGLE-STONE RING, BY BOODLE & DUNTHORNE

The brilliant-cut diamond weighing 3.56 carats, in a raised setting to a textured band, *maker's mark B&D, ring size L, maker's case*

£7,000 - 9,000 €7,900 - 10,000

275

A JADE AND DIAMOND NECKLACE, CIRCA 1970

The collar suspending a jade hoop with polished, brushed and openwork accents, with scattered diamond highlights, *collar inner diameter 11.0cm, pendant length 7.8cm*

£2,000 - 3,000 €2,300 - 3,400

276

A YELLOW SAPPHIRE AND DIAMOND RING, BY GRIMA, 1977

Set to the centre with an oval-cut yellow sapphire, within a beadwork surround accented by brilliant-cut diamonds, mounted in 18 carat yellow gold, *signed Grima, London hallmark, ring size L, maker's pouch*

£3,000 - 3,500 €3,400 - 4,000

277

AN AMETHYST AND DIAMOND DRESS RING

The octagonal step-cut amethyst in a textured geometric mount, bifurcated to one side, with a baguette-cut diamond highlight to the other, *diamond approx. 0.40ct, ring size approx. K (hoop off round)*

£2,000 - 3,000 €2,300 - 3,400



278

A DIAMOND SINGLE-STONE RING

The cushion-shaped diamond in a raised bicoloured setting, *diamonds approx. 1.15cts, ring size L½*

£1,200 - 1,500 €1,400 - 1,700

279

A SAPPHIRE AND DIAMOND BROOCH, CIRCA 1960

Designed as a bicoloured starburst, with radiating brilliant and single-cut diamond rays and a central circular-cut sapphire cluster, *diamonds approx. 0.55ct total, two diamonds deficient, length 5.7cm, cased by Garrard & Co.*

£800 - 1,200 €910 - 1,400

280

A DIAMOND PENDANT AND BANGLE SUITE, 1976

Of openwork hoop design, the inner curve accented to one side by a cluster of brilliant-cut diamonds, on a cable-link chain, the bangle en suite, mounted in 18 carat yellow gold, *diamonds approx. 0.60ct total, maker's marks, London hallmarks, lengths: chain 38.9cm, bangle inner diameter 5.7cm (2)*

£800 - 1,000 €910 - 1,100

278

281

281

AN AMETHYST AND DIAMOND RING, BY ORLANDO ORLANDINI

Of bombé mesh design, set with a rough amethyst crystal inset with a brilliant-cut diamond, *signed Orlandini, ring size N*

£1,200 - 1,500 €1,400 - 1,700

282^Y

A GOLD, ABALONE MOTHER-OF-PEARL AND DIAMOND BROOCH/PENDANT, BY GRIMA, 1973

The abalone baroque pearl, centrally-set within a surround of abstract and tubular design, accented by rows of brilliant-cut diamonds, mounted in 18 carat yellow gold, *diamonds approx. 0.40ct total, signed Grima, maker's mark AG Ltd, London hallmark, length 8.4cm*

£3,000 - 4,000 €3,400 - 4,500

This lot will be subject to USA Fish and Wildlife regulations if it is to be imported into the USA.



283

283

A RUBY AND DIAMOND BROOCH, CIRCA 1950

Designed as a foliate spray, the leaves set with baguette-cut diamonds, the buds set with pear-shaped rubies and brilliant-cut diamonds, *diamonds approx. 3.00cts total, length 7.8cm*

£1,500 - 2,000 €1,700 - 2,300

284

A DIAMOND ETERNITY RING

Designed as a continuous row of brilliant-cut diamonds, *diamonds approx. 1.70cts total, ring size N½*

£800 - 1,200 €910 - 1,400



284

285

A DIAMOND SPRAY BROOCH, CIRCA 1960

Designed as a foliate spray set with brilliant and marquise-cut diamonds, accented by a twisting ribbon of baguette-cut diamonds, *diamonds approx. 5.20cts total, length 6.1cm*

£2,500 - 3,000 €2,800 - 3,400

286

A DIAMOND ETERNITY RING, RETAILED BY KUTCHINSKY, CIRCA 1970

Set throughout with marquise-cut diamonds between duos of baguette-cut diamonds, *diamonds approx. 6.60cts total, ring size L*

£4,000 - 6,000 €4,500 - 6,800

Purchased by the vendor from Kutchinsky, London.



286



285



287

288



289

287

A DIAMOND NECKLACE, CIRCA 1950

Set to the front with articulating floral and foliate links suspending four brilliant-cut diamond swags, on a fancy-link backchain composed of bow-shaped links and a bow-shaped clasp, set throughout with baguette, brilliant and single-cut diamonds, *diamonds approx. 8.30cts total, length 37.9cm*

£4,000 - 6,000 €4,500 - 6,800

288

A DIAMOND RING

Set with an old brilliant-cut diamond weighing 2.34 carats, between baguette-cut diamond shoulders, *ring size M*

£7,000 - 9,000 €7,900 - 10,000

289

A JADE AND DIAMOND CLUSTER RING

The oval jade cabochon within a tiered surround of baguette, tapered baguette and brilliant-cut diamonds, *diamonds approx. 1.75cts total, ring size O½*

£1,500 - 2,000 €1,700 - 2,300

Accompanied by a report from GCS stating that the jadeite jade is natural, wax impregnated. Report number 78159-03, dated 8th June 2018.

290

A DIAMOND RING

The old brilliant-cut diamond, weighing 5.34 carats, within a six-claw setting, between baguette and tapered baguette-cut diamond shoulders, *remaining diamonds approx. 0.90ct total, ring size O (sizing band)*

£15,000 - 20,000 €17,000 - 23,000



290



292



293



294

291

A SNAKE RING, BY ELSA PERETTI FOR TIFFANY

Designed as a snake, the tail set with brilliant-cut diamond highlights, *signed Tiffany & Co. Peretti, ring size M*

£800 - 1,200 €910 - 1,400

291A

A PAIR OF 'HAPPY DIAMOND' PENDENT EARRINGS, BY CHOPARD

Each of heart design, with a central glazed compartment revealing a brilliant-cut 'floating' diamond, suspending an articulated heart-shaped drop, *signed Chopard, Swiss assay mark, European convention mark, length 2.0cm*

£800 - 1,200 €910 - 1,400

292

A DIAMOND 'NOUVELLE VAGUE' RING, BY CARTIER

Of crossover design, one band set with brilliant-cut diamonds, *diamonds approx. 1.00ct total, signed Cartier, numbered, maker's mark, ring size J, maker's case and certificate of authenticity*

£800 - 1,200 €910 - 1,400

293

A DIAMOND CROSS PENDANT NECKLACE, BY TIFFANY

Set throughout with brilliant-cut diamonds, suspended from a trace-link chain, *diamonds approx. 0.55ct total, signed Tiffany & Co., lengths: pendant 1.8cm, chain 41.0cm*

£800 - 1,200 €910 - 1,400



291



295



291A



294A



296

294

A DIAMOND 'B.ZERO1' RING, BY BULGARI

Set with a continuous and recessed row of brilliant-cut diamonds, *signed Bulgari, ring size M*

£1,200 - 1,500 €1,400 - 1,700

294A

A DIAMOND 'ATLAS' RING, BY TIFFANY

The openwork ring with a continuous series of Roman numerals, the front with a border of brilliant-cut diamonds to either side, *signed T&Co., ring size J*

£800 - 1,200 €910 - 1,400

295

A DIAMOND AND BLACK DIAMOND RING, BY CARTIER

Designed as a bombé disc, pavé-set with brilliant-cut diamonds and treated circular-cut black diamonds, *brilliant-cut diamonds approx. 0.95ct total, signed Cartier, numbered, maker's mark, French assay mark, ring size I, maker's case and certificate of authenticity*

£1,000 - 1,500 €1,100 - 1,700

296

A DIAMOND 'SPIGA' BRACELET, BY BULGARI

The sprung bracelet designed as a continuous series of interlocking chevrons, the front pavé-set with brilliant-cut diamonds, *diamonds approx. 8.00cts total, signed Bulgari, inner diameter adjustable, maker's case*

£10,000 - 15,000 €11,000 - 17,000



297



298



299



300

297

A PAIR OF CULTURED PEARL AND DIAMOND PENDENT EARRINGS, BY CHAUMET

Each 10.3mm cultured pearl surmount suspending a series of briolette-cut diamonds and further cultured pearls, *signed Chaumet Paris, numbered, maker's marks, French assay marks, length 4.6cm, maker's case*

£3,000 - 4,000 €3,400 - 4,500

298

AN AQUAMARINE AND DIAMOND RING, BY MARGHERITA BURGNER

Set with a pear-shaped aquamarine, within a radiating surround of brilliant-cut diamonds, to a similarly-set diamond band, *diamonds approx. 2.05cts total, signed Margherita Burgener, maker's mark, ring size M½, maker's case*

£4,000 - 6,000 €4,500 - 6,800

299

A SINGLE-STONE DIAMOND RING

Set with a step-cut diamond, weighing 2.43 carats, mounted in platinum, *partial UK hallmark, European convention mark, ring size M*

£8,000 - 12,000 €9,100 - 14,000

Accompanied by a report from EGL stating that the diamond is E colour, VS2 clarity. Report number EGL3003107418, dated 23rd March 2010.

300

A SINGLE-STONE DIAMOND RING

Set with a brilliant-cut diamond, weighing 4.04 carats, *ring size R*

£8,000 - 10,000 €9,100 - 11,000



301

A DIAMOND NECKLACE

Set with a continuous row of brilliant-cut diamonds, *diamonds approx. 32.75cts total, length 40.0cm*

£15,000 - 20,000 €17,000 - 23,000

302

A PAIR OF AMETHYST AND DIAMOND EARRINGS, BY MARGHERITA BURGNER

Each set with a circular amethyst cabochon within a surround of brilliant-cut diamonds, *diamonds approx. 0.40ct total, maker's marks, length 1.7cm, maker's case*

£1,500 - 2,000 €1,700 - 2,300

303

A DIAMOND RING, BY STEPHEN WEBSTER

Set with a step-cut diamond, weighing 2.04 carats, within an openwork surround of flame-like design, set throughout with brilliant-cut diamonds, mounted in 18 carat white gold, *remaining diamonds approx. 0.95ct total, UK hallmark, maker's mark, ring size L, accompanied by original ring designs from Stephen Webster, a copy of the insurance document from Stephen Webster, maker's case and box*

£7,000 - 9,000 €7,900 - 10,000

Accompanied by a report from BGI stating that the principal diamond is I colour, VVS1 clarity. Report number 611K9G152330, dated 21st October 2004.

304

A DIAMOND SINGLE-STONE RING

The step-cut diamond, weighing 4.04 carats, mounted in platinum, *ring size M*

£10,000 - 15,000 €11,000 - 17,000

Accompanied by a report from IGR stating that the diamond is K-L colour, VS clarity. Report number 30304461, dated 9th June 2016.

END OF SALE

The next Knightsbridge Jewellery Sale will be held on Wednesday 12th September 2018.

Index	Lot No
Aldo Cipullo for Cartier	50
Annabel Jones	20
Boivin	93
Boodle & Dunthorne	55, 60, 274
Boucheron	66, 78, 90, 97
Buccellati	80
Bulgari	11, 17, 140, 219, 294, 296
C.J Auger	6
Cartier	14, 37, 58, 64, 141, 206, 208, 209, 244, 252, 265, 256, 292, 295
Chanel	205
Chaumet	297
Chopard	136, 291A
D.F. Bautre & Co., Geneva	113
de Grisogono	43, 204
Don Cooper	272
Elizabeth Gage	110
Elizabeth Rand	16
Elsa Peretti	291
Faraone	112
Garrard	12, 48, 53, 231
Gavello	49
George L'enfant	223
Graff	154
Grima	276, 282
Gübelin	100
Jean Perret	227
Kutchinsky	286
Lalaounis	59, 69, 70
Longines	75
Margherita Burgener	298, 302
Omega	203
Orlando Orlandini	281
Oromalia	32
Paloma Picasso	147
Pleasance Kirk	273
Pomellato	19
Stephen Webster	218, 303
Schlumberger	51
Theo Fennell	52
Tiffany	15, 51, 147, 177, 257, 291, 293, 294A
Van Cleef & Arpels	135
Vedura	162
Vever	261
Vhernier	91
Zolotas	67

Diamond Grading

Colour

GIA	CIBJO	UK TRADITIONAL
D	Exceptional White +	Finest White
E	Exceptional White	Finest White
F	Rare White +	Fine White
G	Rare White	Fine White
H	White	White
I	Slightly Tinted White	Commercial White
J	Slightly Tinted White	Top Silver Cape
K	Tinted White	Top Silver Cape
L	Tinted White	Silver Cape
M to N	Tinted Colour	Light Cape
O to R	Tinted Colour	Cape
R to Z	Tinted Colour	Dark Cape

Clarity

IF	Internally Flawless	No inclusions and only insignificant surface blemishes when viewed under 10X magnification
VVS1-VVS2	Very, Very Slightly Included	Minute inclusions that are incredibly difficult to see under 10X magnification, generally only visible from the back of the stone and may be removed easily by repolishing
VS1-VS2	Very Slightly Included	Minor inclusions that range from difficult (VS1) to slightly easier (VS2) to see under 10X magnification
SI1-2	Slightly Included	Noticeable inclusions that are easy (SI1) or very easy (SI2) to see under 10X magnification
I1-3	Obvious Inclusions	Obvious inclusions that are easily visible under 10X magnification and in some cases may even be seen without magnification

Ring Sizes

English	Metric	American	French/Japanese
A	37.8252	$\frac{1}{2}$	-
A $\frac{1}{2}$	38.4237	$\frac{3}{4}$	-
B	39.0222	1	-
B $\frac{1}{2}$	39.6207	1 $\frac{1}{4}$	-
C	40.2192	1 $\frac{1}{2}$	-
C $\frac{1}{2}$	40.8177	1 $\frac{3}{4}$	-
D	41.4162	2	1
D $\frac{1}{2}$	42.0147	2 $\frac{1}{4}$	2
E	42.6132	2 $\frac{1}{2}$	-
E $\frac{1}{2}$	43.2117	2 $\frac{3}{4}$	3
F	43.8102	3	4
F $\frac{1}{2}$	44.4087	3 $\frac{1}{4}$	-
G	45.0072	3 $\frac{1}{4}$	5
G $\frac{1}{2}$	45.6057	3 $\frac{1}{2}$	-
H	46.2042	3 $\frac{3}{4}$	6
H $\frac{1}{2}$	46.8027	4	-
I	47.4012	4 $\frac{1}{4}$	7
I $\frac{1}{2}$	47.9997	4 $\frac{1}{2}$	8
J	48.5982	4 $\frac{3}{4}$	-
J $\frac{1}{2}$	49.1967	5	9
K	49.7952	5 $\frac{1}{4}$	10
K $\frac{1}{2}$	50.3937	5 $\frac{1}{2}$	-
L	50.9922	5 $\frac{3}{4}$	11
L $\frac{1}{2}$	51.5907	6	-
M	52.1892	6 $\frac{1}{4}$	12
M $\frac{1}{2}$	52.7877	6 $\frac{1}{2}$	13
N	53.4660	6 $\frac{3}{4}$	-
N $\frac{1}{2}$	54.1044	7	14
O	54.7428	7	15
O $\frac{1}{2}$	55.3812	7 $\frac{1}{4}$	-
P	56.0196	7 $\frac{1}{2}$	16
P $\frac{1}{2}$	56.6580	7 $\frac{3}{4}$	-
Q	57.2964	8	17
Q $\frac{1}{2}$	57.9348	8 $\frac{1}{4}$	18
R	58.5732	8 $\frac{1}{2}$	-
R $\frac{1}{2}$	59.2116	8 $\frac{3}{4}$	19
S	59.8500	9	20
S $\frac{1}{2}$	60.4884	9 $\frac{1}{4}$	-
T	61.1268	9 $\frac{1}{2}$	21
T $\frac{1}{2}$	61.7652	9 $\frac{3}{4}$	22
U	62.4026	10	-
U $\frac{1}{2}$	63.0420	10 $\frac{1}{4}$	23
V	63.6804	10 $\frac{1}{2}$	24
V $\frac{1}{2}$	64.3188	10 $\frac{3}{4}$	-
W	64.8774	11	25
W $\frac{1}{2}$	65.4759	11 $\frac{1}{4}$	-
X	66.0744	11 $\frac{1}{2}$	26
X $\frac{1}{2}$	66.6729	11 $\frac{3}{4}$	-
Y	67.2714	12	-
Y $\frac{1}{2}$	67.8699	12 $\frac{1}{4}$	-
Z	68.4684	12 $\frac{1}{2}$	-

NOTICE TO BIDDERS

This notice is addressed by *Bonhams* to any person who may be interested in a *Lot*, including *Bidders* and potential *Bidders* (including any eventual *Buyer* of the *Lot*). For ease of reference we refer to such persons as “*Bidders*” or “*you*”. Our List of Definitions and Glossary is incorporated into this *Notice to Bidders*. It is at Appendix 3 at the back of the *Catalogue*. Where words and phrases are used in this notice which are in the List of Definitions, they are printed in italics.

IMPORTANT: Additional information applicable to the *Sale* may be set out in the *Catalogue* for the *Sale*, in an insert in the *Catalogue* and/or in a notice displayed at the *Sale* venue and you should read them as well. Announcements affecting the *Sale* may also be given out orally before and during the *Sale* without prior written notice. You should be alert to the possibility of changes and ask in advance of bidding if there have been any.

1. OUR ROLE

In its role as *Auctioneer* of *Lots*, *Bonhams* acts solely for and in the interests of the *Seller*. *Bonhams’* job is to sell the *Lot* at the highest price obtainable at the *Sale* to a *Bidder*. *Bonhams* does not act for *Buyers* or *Bidders* in this role and does not give advice to *Buyers* or *Bidders*. When it or its staff make statements about a *Lot* or, if *Bonhams* provides a *Condition Report* on a *Lot* it is doing that on behalf of the *Seller* of the *Lot*. *Bidders* and *Buyers* who are themselves not expert in the *Lots* are strongly advised to seek and obtain independent advice on the *Lots* and their value before bidding for them. The *Seller* has authorised *Bonhams* to sell the *Lot* as its agent on its behalf and, save where we expressly make it clear to the contrary, *Bonhams* acts only as agent for the *Seller*. Any statement or representation we make in respect of a *Lot* is made on the *Seller’s* behalf and, unless *Bonhams* sells a *Lot* as principal, not on our behalf and any *Contract* for *Sale* is between the *Buyer* and the *Seller* and not with us. If *Bonhams* sells a *Lot* as principal this will either be stated in the *Catalogue* or an announcement to that effect will be made by the *Auctioneer*, or it will be stated in a notice at the *Sale* or an insert in the *Catalogue*.

Bonhams does not owe or undertake or agree to any duty or responsibility to you in contract or tort (whether direct, collateral, express, implied or otherwise). If you successfully bid for a *Lot* and buy it, at that stage *Bonhams* does enter into an agreement with the *Buyer*. The terms of that contract are set out in our *Buyer’s Agreement*, which you will find at Appendix 2 at the back of the *Catalogue*. This will govern *Bonhams’* relationship with the *Buyer*.

2. LOTS

Subject to the *Contractual Description* printed in bold letters in the *Entry* about the *Lot* in the *Catalogue* (see paragraph 3 below), *Lots* are sold to the *Buyer* on an “as is” basis, with all faults and imperfections. Illustrations and photographs contained in the *Catalogue* (other than photographs forming part of the *Contractual Description*) or elsewhere of any *Lots* are for identification purposes only. They may not reveal the true condition of the *Lot*. A photograph or illustration may not reflect an accurate reproduction of the colour(s) of the *Lot*. *Lots* are available for inspection prior to the *Sale* and it is for you to satisfy yourself as to each and every aspect of a *Lot*, including its authorship, attribution, condition, provenance, history, background, authenticity, style, period, age, suitability, quality, roadworthiness (if relevant), origin, value and estimated selling price (including the *Hammer Price*). It is your responsibility to examine any *Lot* in which you are interested. It should be remembered that the actual condition of a *Lot* may not be as good as that indicated by its outward appearance. In particular, parts may have been replaced or renewed and *Lots* may not be authentic or of satisfactory quality; the inside of a *Lot* may not be visible and may not be original or may be damaged, as for example where it is covered by upholstery or material. Given the age of many *Lots* they may have been damaged and/or repaired and you should not assume that a *Lot* is in good condition. Electronic or mechanical parts may not operate or may not comply with current statutory requirements. You should not assume that electrical items designed to operate on mains electricity will be suitable for connection to the mains electricity supply and you should obtain a report from a qualified electrician on their status before doing so. Such items which are unsuitable for connection

are sold as items of interest for display purposes only. If you yourself do not have expertise regarding a *Lot*, you should consult someone who does to advise you. We can assist in arranging facilities for you to carry out or have carried out more detailed inspections and tests. Please ask our staff for details.

Any person who damages a *Lot* will be held liable for the loss caused.

3. DESCRIPTIONS OF LOTS AND ESTIMATES

Contractual Description of a Lot

The *Catalogue* contains an *Entry* about each *Lot*. Each *Lot* is sold by its respective *Seller* to the *Buyer* of the *Lot* as corresponding only with that part of the *Entry* which is printed in bold letters and (except for the colour, which may be inaccurately reproduced) with any photograph of the *Lot* in the *Catalogue*. The remainder of the *Entry*, which is not printed in bold letters, represents *Bonhams’* opinion (given on behalf of the *Seller*) about the *Lot* only and is not part of the *Contractual Description* in accordance with which the *Lot* is sold by the *Seller*.

Estimates

In most cases, an *Estimate* is printed beside the *Entry*. *Estimates* are only an expression of *Bonhams’* opinion made on behalf of the *Seller* of the range where *Bonhams* thinks the *Hammer Price* for the *Lot* is likely to fall; it is not an *Estimate* of value. It does not take into account any VAT or *Buyer’s Premium* payable or any other fees payable by the *Buyer*, which are detailed in paragraph 7 of the *Notice to Bidders*, below. *Lots* can in fact sell for *Hammer Prices* below and above the *Estimate*. Any *Estimate* should not be relied on as an indication of the actual selling price or value of a *Lot*. *Estimates* are in the currency of the *Sale*.

Condition Reports

In respect of most *Lots*, you may ask for a *Condition Report* on its physical condition from *Bonhams*. If you do so, this will be provided by *Bonhams* on behalf of the *Seller* free of charge. *Bonhams* is not entering into a contract with you in respect of the *Condition Report* and accordingly does not assume responsibility to you in respect of it. Nor does the *Seller* owe or agree to owe you as a *Bidder* any obligation or duty in respect of this free report about a *Lot*, which is available for your own inspection or for inspection by an expert instructed by you. However, any written *Description* of the physical condition of the *Lot* contained in a *Condition Report* will form part of the *Contractual Description* of the *Lot* under which it is sold to any *Buyer*.

The Seller’s responsibility to you

The *Seller* does not make or agree to make any representation of fact or contractual promise, *Guarantee* or warranty and undertakes no obligation or duty, whether in contract or in tort (other than to the eventual *Buyer* as set out above), in respect of the accuracy or completeness of any statement or representation made by him or on his behalf, which is in any way descriptive of any *Lot* or as to the anticipated or likely selling price of any *Lot*. Other than as set out above, no statement or representation in any way descriptive of a *Lot* or any *Estimate* is incorporated into any *Contract* for *Sale* between a *Seller* and a *Buyer*.

Bonhams’ responsibility to you

You have the opportunity of examining the *Lot* if you want to and the *Contract* for *Sale* for a *Lot* is with the *Seller* and not with *Bonhams*; *Bonhams* acts as the *Seller’s* agent only (unless *Bonhams* sells the *Lot* as principal).

Bonhams undertakes no obligation to you to examine, investigate or carry out any tests, either in sufficient depth or at all, on each *Lot* to establish the accuracy or otherwise of any *Descriptions* or opinions given by *Bonhams*, or by any person on *Bonhams’* behalf, whether in the *Catalogue* or elsewhere.

You should not suppose that such examinations, investigations or tests have occurred.

Bonhams does not make or agree to make any representation of fact, and undertakes no obligation or duty (whether in contract or tort) in respect of the accuracy or completeness of any statement or representation made by *Bonhams* or on *Bonhams’* behalf which is in any way descriptive of any *Lot*

or as to the anticipated or likely selling price of any *Lot*. No statement or representation by *Bonhams* or on its behalf in any way descriptive of any *Lot* or any *Estimate* is incorporated into our *Buyer’s Agreement*.

Alterations

Descriptions and *Estimates* may be amended at *Bonhams’* discretion from time to time by notice given orally or in writing before or during a *Sale*.

THE *LOT* IS AVAILABLE FOR INSPECTION AND YOU MUST FORM YOUR OWN OPINION IN RELATION TO IT. YOU ARE STRONGLY ADVISED TO EXAMINE ANY *LOT* OR HAVE IT EXAMINED ON YOUR BEHALF BEFORE THE *SALE*.

4. CONDUCT OF THE SALE

Our *Sales* are public auctions which persons may attend and you should take the opportunity to do so. We do reserve the right at our sole discretion to refuse admission to our premises or to any *Sale* without stating a reason. We have complete discretion as to whether the *Sale* proceeds, whether any *Lot* is included in the *Sale*, the manner in which the *Sale* is conducted and we may offer *Lots* for *Sale* in any order we choose notwithstanding the numbers given to *Lots* in the *Catalogue*. You should therefore check the date and starting time of the *Sale*, whether there have been any withdrawals or late entries. Remember that withdrawals and late entries may affect the time at which a *Lot* you are interested in is put up for *Sale*. We have complete discretion to refuse any bid, to nominate any bidding increment we consider appropriate, to divide any *Lot*, to combine two or more *Lots*, to withdraw any *Lot* from a *Sale* and, before the *Sale* has been closed, to put up any *Lot* for auction again. Auction speeds can exceed 100 *Lots* to the hour and bidding increments are generally about 10%. However these do vary from *Sale* to *Sale* and from *Auctioneer* to *Auctioneer*. Please check with the department organising the *Sale* for advice on this. Where a *Reserve* has been applied to a *Lot*, the *Auctioneer* may, in his absolute discretion, place bids (up to an amount not equalling or exceeding such *Reserve*) on behalf of the *Seller*. We are not responsible to you in respect of the presence or absence of any *Reserve* in respect of any *Lot*. If there is a *Reserve* it will normally be no higher than the lower figure for any *Estimate* in the *Catalogue*, assuming that the currency of the *Reserve* has not fluctuated adversely against the currency of the *Estimate*. The *Buyer* will be the *Bidder* who makes the highest bid acceptable to the *Auctioneer* for any *Lot* (subject to any applicable *Reserve*) to whom the *Lot* is knocked down by the *Auctioneer* at the fall of the *Auctioneer’s* hammer. Any dispute as to the highest acceptable bid will be settled by the *Auctioneer* in his absolute discretion. All bids tendered will relate to the actual *Lot* number announced by the *Auctioneer*. An electronic currency converter may be used at the *Sale*. This equipment is provided as a general guide as to the equivalent amount in certain currencies of a given bid. We do not accept any responsibility for any errors which may occur in the use of the currency converter. We may use video cameras to record the *Sale* and may record telephone calls for reasons of security and to assist in solving any disputes which may arise in relation to bids made at the *Sale*. At some *Sales*, for example, jewellery *Sales*, we may use screens on which images of the *Lots* will be projected. This service is provided to assist viewing at the *Sale*. The image on the screen should be treated as an indication only of the current *Lot*. It should be noted that all bids tendered will relate to the actual *Lot* number announced by the *Auctioneer*. We do not accept any responsibility for any errors which may occur in the use of the screen.

5. BIDDING

We do not accept bids from any person who has not completed and delivered to us one of our *Bidding Forms*, either our *Bidder Registration Form*, *Absentee Bidding Form* or *Telephone Bidding Form*. You will be asked for proof of identity, residence and references, which, when asked for, you must supply if your bids are to be accepted by us. Please bring your passport, driving licence (or similar photographic proof of identity) and proof of address. We may request a deposit from you before allowing you to bid. We may refuse entry to a *Sale* to any person even if that person has completed a *Bidding Form*.

Bidding in person

You should come to our *Bidder* registration desk at the *Sale* venue and fill out a *Bidder* Registration Form on (or, if possible, before) the day of the *Sale*. The bidding number system is sometimes referred to as "paddle bidding". You will be issued with a large card (a "paddle") with a printed number on it. This will be attributed to you for the purposes of the *Sale*. Should you be a successful *Bidder* you will need to ensure that your number can be clearly seen by the *Auctioneer* and that it is your number which is identified as the *Buyer's*. You should not let anyone else use your paddle as all *Lots* will be invoiced to the name and address given on your *Bidder* Registration Form. Once an invoice is issued it will not be changed. If there is any doubt as to the *Hammer Price* of, or whether you are the successful *Bidder* of, a particular *Lot*, you must draw this to the attention of the *Auctioneer* before the next *Lot* is offered for *Sale*. At the end of the *Sale*, or when you have finished bidding please return your paddle to the *Bidder* registration desk.

Bidding by telephone

If you wish to bid at the *Sale* by telephone, please complete a *Telephone Bidding Form*, which is available from our offices or in the *Catalogue*. Please then return it to the office responsible for the *Sale* at least 24 hours in advance of the *Sale*. It is your responsibility to check with our Bids Office that your bid has been received. Telephone calls will be recorded. The telephone bidding facility is a discretionary service and may not be available in relation to all *Lots*. We will not be responsible for bidding on your behalf if you are unavailable at the time of the *Sale* or if the telephone connection is interrupted during bidding. Please contact us for further details.

Bidding by post or fax

Absentee *Bidding Forms* can be found in the back of this *Catalogue* and should be completed and sent to the office responsible for the *Sale*. It is in your interests to return your form as soon as possible, as if two or more *Bidders* submit identical bids for a *Lot*, the first bid received takes preference. In any event, all bids should be received at least 24 hours before the start of the *Sale*. Please check your Absentee *Bidding Form* carefully before returning it to us, fully completed and signed by you. It is your responsibility to check with our Bids Office that your bid has been received. This additional service is complimentary and is confidential. Such bids are made at your own risk and we cannot accept liability for our failure to receive and/or place any such bids. All bids made on your behalf will be made at the lowest level possible subject to *Reserves* and other bids made for the *Lot*. Where appropriate your bids will be rounded down to the nearest amount consistent with the *Auctioneer's* bidding increments. New *Bidders* must also provide proof of identity and address when submitting bids. Failure to do this will result in your bid not being placed.

Bidding via the internet

Please visit our *Website* at <http://www.bonhams.com> for details of how to bid via the internet.

Bidding through an agent

Bids will be accepted as placed on behalf of the person named as the principal on the *Bidding Form* although we may refuse to accept bids from an agent on behalf of a principal and will require written confirmation from the principal confirming the agent's authority to bid. Nevertheless, as the *Bidding Form* explains, any person placing a bid as agent on behalf of another (whether or not he has disclosed that fact or the identity of his principal) will be jointly and severally liable with the principal to the *Seller* and to *Bonhams* under any contract resulting from the acceptance of a bid. Subject to the above, please let us know if you are acting on behalf of another person when bidding for *Lots* at the *Sale*.

Equally, please let us know if you intend to nominate another person to bid on your behalf at the *Sale* unless this is to be carried out by us pursuant to a *Telephone* or *Absentee Bidding Form* that you have completed. If we do not approve the agency arrangements in writing before the *Sale*, we are entitled to assume that the person bidding at the *Sale* is bidding on his own behalf. Accordingly, the person bidding at the *Sale* will be the *Buyer* and will be liable to pay the *Hammer Price* and

Buyer's Premium and associated charges. If we approve the identity of your client in advance, we will be in a position to address the invoice to your principal rather than you. We will require proof of the agent's client's identity and residence in advance of any bids made by the agent on his behalf. Please refer to our *Conditions of Business* and contact our Customer Services Department for further details.

6. CONTRACTS BETWEEN THE BUYER AND SELLER AND THE BUYER AND BONHAMS

On the *Lot* being knocked down to the *Buyer*, a *Contract for Sale* of the *Lot* will be entered into between the *Seller* and the *Buyer* on the terms of the *Contract for Sale* set out in Appendix 1 at the back of the *Catalogue*. You will be liable to pay the *Purchase Price*, which is the *Hammer Price* plus any applicable VAT. At the same time, a separate contract is also entered into between us as *Auctioneers* and the *Buyer*. This is our *Buyer's Agreement*, the terms of which are set out in Appendix 2 at the back of the *Catalogue*. Please read the terms of the *Contract for Sale* and our *Buyer's Agreement* contained in the *Catalogue* in case you are the successful *Bidder*. We may change the terms of either or both of these agreements in advance of their being entered into, by setting out different terms in the *Catalogue* and/or by placing an insert in the *Catalogue* and/or by notices at the *Sale* venue and/or by oral announcements before and during the *Sale*. You should be alert to this possibility of changes and ask if there have been any.

7. BUYER'S PREMIUM AND OTHER CHARGES PAYABLE BY THE BUYER

Under the *Buyer's Agreement*, a premium (the *Buyer's Premium*) is payable to us by the *Buyer* in accordance with the terms of the *Buyer's Agreement* and at rates set out below, calculated by reference to the *Hammer Price* and payable in addition to it. For this *Sale* the following rates of *Buyer's Premium* will be payable by *Buyers* of *Lots*:

25% up to £175,000 of the *Hammer Price*
20% from £175,001 to £3,000,000 of the *Hammer Price*
12.5% from £3,000,001 of the *Hammer Price*

Storage and handling charges may also be payable by the *Buyer* as detailed on the specific *Sale* Information page at the front of the catalogue.

The *Buyer's Premium* and all other charges payable to us by the *Buyer* are subject to VAT at the prevailing rate, currently 20%.

VAT may also be payable on the *Hammer Price* of the *Lot*, where indicated by a symbol beside the *Lot* number. See paragraph 8 below for details.

On certain *Lots*, which will be marked "AR" in the *Catalogue* and which are sold for a *Hammer Price* of €1,000 or greater (converted into the currency of the *Sale* using the European Central Bank Reference rate prevailing on the date of the *Sale*), the *Additional Premium* will be payable to us by the *Buyer* to cover our *Expenses* relating to the payment of royalties under the Artists Resale Right Regulations 2006. The *Additional Premium* will be a percentage of the amount of the *Hammer Price* calculated in accordance with the table below, and shall not exceed €12,500 (converted into the currency of the *Sale* using the European Central Bank Reference rate prevailing on the date of the *Sale*).

<i>Hammer Price</i>	Percentage amount
From €0 to €50,000	4%
From €50,000.01 to €200,000	3%
From €200,000.01 to €350,000	1%
From €350,000.01 to €500,000	0.5%
Exceeding €500,000	0.25%

8. VAT

The prevailing rate of VAT at the time of going to press is 20%, but this is subject to government change and the rate payable will be the rate in force on the date of the *Sale*.

The following symbols, shown beside the *Lot* number, are used to denote that VAT is due on the *Hammer Price* and *Buyer's Premium*:

- † VAT at the prevailing rate on *Hammer Price* and *Buyer's Premium*
- Ω VAT on imported items at the prevailing rate on *Hammer Price* and *Buyer's Premium*
- * VAT on imported items at a preferential rate of 5% on *Hammer Price* and the prevailing rate on *Buyer's Premium*
- G Gold bullion exempt from VAT on the *Hammer Price* and subject to VAT at the prevailing rate on the *Buyer's Premium*
- Zero rated for VAT, no VAT will be added to the *Hammer Price* or the *Buyer's Premium*
- α *Buyers* from within the EU: VAT is payable at the prevailing rate on just the *Buyer's Premium* (NOT the *Hammer Price*). *Buyers* from outside the EU: VAT is payable at the prevailing rate on both *Hammer Price* and *Buyer's Premium*. If a *Buyer*, having registered under a non-EU address, decides that the item is not to be exported from the EU, then he should advise *Bonhams* immediately.

In all other instances no VAT will be charged on the *Hammer Price*, but VAT at the prevailing rate will be added to *Buyer's Premium* which will be invoiced on a VAT inclusive basis.

9. PAYMENT

It is of critical importance that you ensure that you have readily available funds to pay the *Purchase Price* and the *Buyer's Premium* (plus VAT and any other charges and *Expenses* to us) in full before making a bid for the *Lot*. If you are a successful *Bidder*, payment will be due to us by 4.30 pm on the second working day after the *Sale* so that all sums are cleared by the eighth working day after the *Sale*. Payments made by anyone other than the registered *Buyer* will not be accepted. *Bonhams* reserves the right to vary the terms of payment at any time.

Bonhams' preferred payment method is by bank transfer.

You may electronically transfer funds to our *Trust Account*. If you do so, please quote your paddle number and invoice number as the reference. Our *Trust Account* details are as follows:

Bank: National Westminster Bank Plc
Address: PO Box 4RY
250 Regent Street
London W1A 4RY
Account Name: Bonhams 1793 Limited Trust Account
Account Number: 25563009
Sort Code: 56-00-27
IBAN Number: GB 33 NWBK 560027 25563009

If paying by bank transfer, the amount received after the deduction of any bank fees and/or conversion of the currency of payment to pounds sterling must not be less than the sterling amount payable, as set out on the invoice.

Payment may also be made by one of the following methods:

Sterling personal cheque drawn on a UK branch of a bank or building society: all cheques must be cleared before you can collect your purchases and should be made payable to Bonhams 1793 Limited.

Cash: you may pay for *Lots* purchased by you at this *Sale* with notes or coins in the currency in which the *Sale* is conducted (but not any other currency) provided that the total amount payable by you in respect of all *Lots* purchased by you at the *Sale* does not exceed £3,000, or the equivalent in the currency in which the *Sale* is conducted, at the time when payment is made. If the amount payable by you for *Lots* exceeds that sum, the balance must be paid otherwise than in coins or notes; this limit applies to both payment at our premises and direct deposit into our bank account.

Debit cards (including China Union Pay (CUP) cards and debit cards issued by Visa and MasterCard only). There is no limit on payment value if payment is made in person using Chip & Pin verification.

Payment by telephone may also be accepted up to £5,000, subject to appropriate verification procedures, although this facility is not available for first time buyers. If the amount payable by you for *Lots* exceeds that sum, the balance must be paid by other means.

Credit cards (including China Union Pay (CUP) cards and credit cards issued by Visa and MasterCard only). There is a £5,000 limit on payment value if payment is made in person using Chip & Pin verification.

It may be advisable to notify your debit or credit card provider of your intended purchase in advance to reduce delays caused by us having to seek authority when you come to pay.

Note: only one debit or credit card may be used for payment of an account balance. If you have any questions with regards to card payments, please contact our Customer Services Department.

10. COLLECTION AND STORAGE

The *Buyer* of a *Lot* will not be allowed to collect it until payment in full and in cleared funds has been made (unless we have made a special arrangement with the *Buyer*). For collection and removal of purchased *Lots*, please refer to *Sale* Information at the front of the *Catalogue*. Our offices are open 9.00am – 5pm Monday to Friday. Details relating to the collection of a *Lot*, the storage of a *Lot* and our *Storage Contractor* after the *Sale* are set out in the *Catalogue*.

11. SHIPPING

For information and estimates on domestic and international shipping as well as export licenses please contact Alban Shipping on +44 (0) 1582 493 099 enquiries@albanshipping.co.uk

12. EXPORT/TRADE RESTRICTIONS

It is your sole responsibility to comply with all export and import regulations relating to your purchases and also to obtain any relevant export and/or import licence(s). Export licences are issued by Arts Council England and application forms can be obtained from its Export Licensing Unit. The detailed provisions of the export licencing arrangements can be found on the ACE website <http://www.artscouncil.org.uk/what-we-do/supporting-museums/cultural-property/export-controls/export-licensing/> or by phoning ACE on +44 (0)20 7973 5188. The need for import licences varies from country to country and you should acquaint yourself with all relevant local requirements and provisions. The refusal of any import or export licence(s) or any delay in obtaining such licence(s) shall not permit the rescission of any *Sale* nor allow any delay in making full payment for the *Lot*. Generally, please contact our shipping department before the *Sale* if you require assistance in relation to export regulations.

13. CITES REGULATIONS

Please be aware that all *Lots* marked with the symbol Y are subject to CITES regulations when exporting these items outside the EU. These regulations may be found at <http://www.defra.gov.uk/ahvla-en/imports-exports/cites/> or may be requested from:

Animal Health and Veterinary Laboratories Agency (AHVLA)
Wildlife Licencing
Floor 1, Zone 17, Temple Quay House
2 The Square, Temple Quay
BRISTOL BS1 6EB
Tel: +44 (0) 117 372 8774

14. THE SELLERS AND/OR BONHAMS' LIABILITY

Other than any liability of the *Seller* to the *Buyer* of a *Lot* under the *Contract for Sale*, neither we nor the *Seller* are liable (whether in negligence or otherwise) for any error or misdescription or omission in any *Description* of a *Lot* or any *Estimate* in respect of it, whether contained in the *Catalogue* or

otherwise, whether given orally or in writing and whether given before or during the *Sale*. Neither we nor the *Seller* will be liable for any loss of *Business*, profits, revenue or income, or for loss of reputation, or for disruption to *Business* or wasted time on the part of management or staff, or for indirect losses or consequential damages of any kind, irrespective in any case of the nature, volume or source of the loss or damage alleged to be suffered, and irrespective of whether the said loss or damage is caused by or claimed in respect of any negligence, other tort, breach of contract (if any) or statutory duty, restitutionary claim or otherwise. In any circumstances where we and/or the *Seller* are liable in relation to any *Lot* or any *Description* or *Estimate* made of any *Lot*, or the conduct of any *Sale* in relation to any *Lot*, whether in damages, for an indemnity or contribution, or for a restitutionary remedy or otherwise, our and/or the *Seller's* liability (combined, if both we and the *Seller* are liable) will be limited to payment of a sum which will not exceed by way of maximum the amount of the *Purchase Price* of the *Lot* irrespective in any case of the nature, volume or source of any loss or damage alleged to be suffered or sum claimed as due, and irrespective of whether the liability arises from any negligence, other tort, breach of contract (if any) or statutory duty or otherwise. Nothing set out above will be construed as excluding or restricting (whether directly or indirectly) our liability or excluding or restricting any person's rights or remedies in respect of (i) fraud, or (ii) death or personal injury caused by our negligence (or by the negligence of any person under our control or for whom we are legally responsible), or (iii) acts or omissions for which we are liable under the Occupiers Liability Act 1957, or (iv) any other liability to the extent the same may not be excluded or restricted as a matter of law or (v) our undertakings under paragraphs 9 (in relation to specialist *Stamp* or *Book Sales* only) and 10 of the *Buyer's Agreement*. The same applies in respect of the *Seller*, as if references to us in this paragraph were substituted with references to the *Seller*.

15. BOOKS

As stated above, all *Lots* are sold on an "as is" basis, subject to all faults, imperfections and errors of *Description* save as set out below. However, you will be entitled to reject a *Book* in the circumstances set out in paragraph 11 of the *Buyers Agreement*. Please note that *Lots* comprising printed *Books*, unframed maps and bound manuscripts are not liable to VAT on the *Buyer's Premium*.

16. CLOCKS AND WATCHES

All *Lots* are sold "as is", and the absence of any reference to the condition of a clock or watch does not imply that the *Lot* is in good condition and without defects, repairs or restorations. Most clocks and watches have been repaired in the course of their normal lifetime and may now incorporate parts not original to them. Furthermore, *Bonhams* makes no representation or warranty that any clock or watch is in working order. As clocks and watches often contain fine and complex mechanisms, *Bidders* should be aware that a general service, change of battery or further repair work, for which the *Buyer* is solely responsible, may be necessary. *Bidders* should be aware that the importation of watches such as Rolex, Frank Muller and Corum into the United States is highly restricted. These watches may not be shipped to the USA and can only be imported personally.

17. FIREARMS – PROOF, CONDITION AND CERTIFICATION

Proof of Firearms

The term "proof exemption" indicates that a firearm has been examined at a Proof House, but not proved, as either (a) it was deemed of interest and not intended for use, or (b) ammunition was not available. In either case, the firearm must be regarded as unsafe to fire unless subsequently proved. Firearms proved for Black Powder should not be used with smokeless ammunition.

The term "Certificate of Unprovability" indicates that a firearm has been examined at a Proof House and is deemed both unsuitable for proof and use. Reproof is required before any such firearm is to be used.

Guns Sold as Parts

Barrels of guns sold as parts will only be made available for

sleeving and measurements once rendered unserviceable according to the Gun Barrel Proof Act of 1968 to 1978 and the Rules of Proof.

Condition of Firearms

Comment in this *Catalogue* is restricted, in general, to exceptional condition and to those defects that might affect the immediate safety of a firearm in normal use. An intending *Bidder* unable to make technical examinations and assessments is recommended to seek advice from a gunmaker or from a modern firearms specialist. All prospective *Bidders* are advised to consult the ° of bore and wall-thickness measurements posted in the saleroom and available from the department. *Bidders* should note that guns are stripped only where there is a strong indication of a mechanical malfunction. Stripping is not, otherwise, undertaken. Guns intended for use should be stripped and cleaned beforehand. Hammer guns should have their rebound mechanisms checked before use. The safety mechanisms of all guns must be tested before use. All measurements are approximate.

Original Gun Specifications Derived from Gunmakers

The Sporting Gun Department endeavours to confirm a gun's original specification and date of manufacture with makers who hold their original records.

Licensing Requirements Firearms Act 1968 as amended

Bonhams is constantly reviewing its procedures and would remind you that, in the case of firearms or shotguns subject to certification, to conform with current legislation, *Bonhams* is required to see, as appropriate, your original registered firearms dealer's certificate / shot gun certificate / firearm certificate / museum firearms licence / Section 5 authority or import licence (or details of any exemption from which you may benefit, for instance Crown servant status) for the firearm(s) you have purchased prior to taking full payment of the amount shown on your invoice. Should you not already be in possession of such an authority or exemption, you are required to initially pay a deposit of 95% of the total invoice with the balance of 5% payable on presentation of your valid certificate or licence showing your authority to hold the firearm(s) concerned.

Please be advised that if a successful *Bidder* is then unable to produce the correct paperwork, the *Lot(s)* will be reoffered by *Bonhams* in the next appropriate *Sale*, on standard terms for *Sellers*, and you will be responsible for any loss incurred by *Bonhams* on the original *Sale* to you.

In the case of RFD certificates and Section 5 authorities, we wish to keep an up-to-date copy on file. Please supply us with a Fax or photocopy. It would be helpful if you could send us an updated copy whenever your certificate or authority is renewed or changed.

Lots marked 'S1' and bearing red labels are Section 1 firearms and require a valid British Firearms certificate, RFD Licence or import licence.

Lots marked 'S2' and bearing blue labels are Section 2 firearms and require a valid British Shotgun certificate, RFD licence or import licence.

Lots marked 'S5' and bearing specially marked red labels are Section 5 prohibited firearms and require a valid Section 5 Authority or import licence.

Lots marked with a 'S58' and bearing yellow labels are for obsolete calibres and no licence is required unless ammunition is held.

Unmarked *Lots* require no licence.

Please do not hesitate to contact the Modern Sporting Gun Department should you have any queries.

Taxidermy and Related Items

As a *Seller* of these articles, *Bonhams* undertakes to comply fully with Cites and DEFRA regulations. *Buyers* are advised to inform themselves of all such regulations and should expect the exportation of items to take some time to arrange.

18. FURNITURE

Upholstered Furniture

Whilst we take every care in cataloguing furniture which has been upholstered we offer no *Guarantee* as to the originality of the wood covered by fabric or upholstery.

19. JEWELLERY

Gemstones

Historically many gemstones have been subjected to a variety of treatments to enhance their appearance. Sapphires and rubies are routinely heat treated to improve their colour and clarity, similarly emeralds are frequently treated with oils or resin for the same purpose. Other treatments such as staining, irradiation or coating may have been used on other gemstones. These treatments may be permanent, whilst others may need special care or re-treatment over the years to retain their appearance. *Bidders* should be aware that *Estimates* assume that gemstones may have been subjected to such treatments. A number of laboratories issue certificates that give more detailed *Descriptions* of gemstones. However there may not be consensus between different laboratories on the degrees, or types of treatment for any particular gemstone. In the event that *Bonhams* has been given or has obtained certificates for any *Lot* in the *Sale* these certificates will be disclosed in the *Catalogue*. Although, as a matter of policy, *Bonhams* endeavours to provide certificates from recognised laboratories for certain gemstones, it is not feasible to obtain certificates for each *Lot*. In the event that no certificate is published in the *Catalogue*, *Bidders* should assume that the gemstones may have been treated. Neither *Bonhams* nor the *Seller* accepts any liability for contradictions or differing certificates obtained by *Buyers* on any *Lots* subsequent to the *Sale*.

Estimated Weights

If a stone(s) weight appears within the body of the *Description* in capital letters, the stone(s) has been unmounted and weighed by *Bonhams*. If the weight of the stone(s) is stated to be approximate and does not appear in capital letters, the stone(s) has been assessed by us within its/their settings, and the stated weight is a statement of our opinion only. This information is given as a guide and *Bidders* should satisfy themselves with regard to this information as to its accuracy.

Signatures

1. A diamond brooch, by Kutchinsky

When the maker's name appears in the title, in *Bonhams'* opinion the piece is by that maker.

2. A diamond brooch, signed Kutchinsky

Has a signature that, in *Bonhams'* opinion, is authentic but may contain gemstones that are not original, or the piece may have been altered.

3. A diamond brooch, mounted by Kutchinsky

Has been created by the jeweller, in *Bonhams'* opinion, but using stones or designs supplied by the client.

20. PHOTOGRAPHS

Explanation of Catalogue Terms

- "Bill Brandt": in our opinion a work by the artist.
- "Attributed to Bill Brandt": in our opinion probably a work by the artist, but less certainty to authorship is expressed than in the preceding category.
- "Signed and/or titled and/or dated and/or inscribed": in our opinion the signature and/or title and/or date and/or inscription are in the artist's hand.
- "Signed and/or titled and/or dated and/or inscribed in another hand": in our opinion the signature and/or title and/or date and/or inscription have been added by another hand.
- The date given is that of the image (negative). Where no further date is given, this indicates that the photographic print is vintage (the term "vintage" may also be included in the *Lot Description*). A vintage photograph is one which was made within approximately 5-10 years of the negative. Where a second, later date appears, this refers to the date of printing. Where the exact printing date is not known, but understood to be later, "printed later" will appear in the *Lot Description*.

- Unless otherwise specified, dimensions given are those of the piece of paper on which the image is printed, including any margins. Some photographs may appear in the *Catalogue* without margins illustrated.
- All photographs are sold unframed unless stated in the *Lot Description*.

21. PICTURES

Explanation of Catalogue Terms

The following terms used in the *Catalogue* have the following meanings but are subject to the general provisions relating to *Descriptions* contained in the *Contract for Sale*:

- "Jacopo Bassano": in our opinion a work by the artist. When the artist's forename(s) is not known, a series of asterisks, followed by the surname of the artist, whether preceded by an initial or not, indicates that in our opinion the work is by the artist named;
- "Attributed to Jacopo Bassano": in our opinion probably a work by the artist but less certainty as to authorship is expressed than in the preceding category;
- "Studio/Workshop of Jacopo Bassano": in our opinion a work by an unknown hand in a studio of the artist which may or may not have been executed under the artist's direction;
- "Circle of Jacopo Bassano": in our opinion a work by a hand closely associated with a named artist but not necessarily his pupil;
- "Follower of Jacopo Bassano": in our opinion a work by a painter working in the artist's style, contemporary or nearly contemporary, but not necessarily his pupil;
- "Manner of Jacopo Bassano": in our opinion a work in the style of the artist and of a later date;
- "After Jacopo Bassano": in our opinion, a copy of a known work of the artist;
- "Signed and/or dated and/or inscribed": in our opinion the signature and/or date and/or inscription are from the hand of the artist;
- "Bears a signature and/or date and/or inscription": in our opinion the signature and/or date and/or inscription have been added by another hand.

22. PORCELAIN AND GLASS

Damage and Restoration

For your guidance, in our *Catalogues* we detail, as far as practicable, recorded all significant defects, cracks and restoration. Such practicable *Descriptions* of damage cannot be definitive, and in providing *Condition Reports*, we cannot *Guarantee* that there are no other defects present which have not been mentioned. *Bidders* should satisfy themselves by inspection, as to the condition of each *Lot*. Please see the *Contract for Sale* printed in this *Catalogue*. Because of the difficulty in determining whether an item of glass has been repolished, in our *Catalogues* reference is only made to visible chips and cracks. No mention is made of repolishing, severe or otherwise.

23. VEHICLES

The Veteran Car Club of Great Britain

Dating Plates and Certificates

When mention is made of a Veteran Car Club Dating Plate or Dating Certificate in this *Catalogue*, it should be borne in mind that the Veteran Car Club of Great Britain using the services of Veteran Car Company Ltd, does from time to time, review cars already dated and, in some instances, where fresh evidence becomes available, the review can result in an alteration of date. Whilst the Club and Veteran Car Company Ltd make every effort to ensure accuracy, the date shown on the Dating Plate or Dating Certificate cannot be guaranteed as correct and intending purchasers should make their own enquiries as to the date of the car.

24. WINE

Lots which are lying under Bond and those liable to VAT may not be available for immediate collection.

Examining the wines

It is occasionally possible to provide a pre-*Sale* tasting for larger parcels (as defined below). This is generally limited to more recent and everyday drinking wines. Please contact the department for details.

Olt is not our policy to inspect every unopened case. In the case of wines older than 20 years the boxes will usually have been opened and levels and appearance noted in the *Catalogue* where necessary. You should make proper allowance for variations in ullage levels and conditions of corks, capsules and labels.

Corks and Ullages

Ullage refers to the space between the base of the cork and the wine. Ullage levels for Bordeaux shaped bottles are only normally noted when below the neck and for Burgundy, Alsace, German and Cognac shaped bottles when greater than 4 centimetres (cm). Acceptable ullage levels increase with age; generally acceptable levels are as follows:

Under 15 years old – into neck or less than 4cm
15 to 30 years old – top shoulder (ts) or up to 5cm
Over 30 years old – high shoulder (hs) or up to 6cm

It should be noted that ullages may change between publication of the *Catalogue* and the *Sale* and that corks may fail as a result of transporting the wine. We will only accept responsibility for *Descriptions* of condition at the time of publication of the *Catalogue* and cannot accept responsibility for any loss resulting from failure of corks either before or after this point.

Options to buy parcels

A parcel is a number of *Lots* of identical size of the same wine, bottle size and *Description*. The *Buyer* of any of these *Lots* has the option to accept some or all of the remaining *Lots* in the parcel at the same price, although such options will be at the *Auctioneer's* sole discretion. Absentee *Bidders* are, therefore, advised to bid on the first *Lot* in a parcel.

Wines in Bond

Wines lying in Bond are marked Δ. All *Lots* sold under Bond, and which the *Buyer* wishes to remain under Bond, will be invoiced without VAT or Duty on the *Hammer Price*. If the *Buyer* wishes to take the *Lot* as Duty paid, UK Excise Duty and VAT will be added to the *Hammer Price* on the invoice.

Buyers must notify *Bonhams* at the time of the *sale* whether they wish to take their wines under Bond or Duty paid. If a *Lot* is taken under Bond, the *Buyer* will be responsible for all VAT, Duty, clearance and other charges that may be payable thereon.

Buyers outside the UK must be aware that any forwarding agent appointed to export their purchases must have a movement certificate for *Lots* to be released under Bond.

Bottling Details and Case Terms

The following terms used in the *Catalogue* have the following meanings:

CB – Château bottled
DB – Domaine bottled
EstB – Estate bottled
BB – Bordeaux bottled
BE – Belgian bottled
FB – French bottled
GB – German bottled
OB – Oporto bottled
UK – United Kingdom bottled
owc – original wooden case
iwc – individual wooden case
oc – original carton

SYMBOLS

THE FOLLOWING SYMBOLS ARE USED TO DENOTE

- Y Subject to CITES regulations when exporting these items outside the EU, see clause 13.
- TP Objects displayed with a TP will be located at the Cadogan Tate warehouse and will only be available for collection from this location.
- W Objects displayed with a w will be located in the Bonhams Warehouse and will only be available for collection from this location.
- Δ Wines lying in Bond.
- AR An *Additional Premium* will be payable to us by the *Buyer* to cover our *Expenses* relating to payment of royalties under the Artists Resale Right Regulations 2006. See clause 7 for details.
- The *Seller* has been guaranteed a minimum price for the *Lot*, either by *Bonhams* or a third party. This may take the form of an irrevocable bid by a third party, who may make a financial gain on a successful *Sale* or a financial loss if unsuccessful.
- ▲ *Bonhams* owns the *Lot* either wholly or partially or may otherwise have an economic interest.
- Ⓞ This lot contains or is made of ivory. The United States Government has banned the import of ivory into the USA.

•, †, *, G, Ω, α see clause 8, VAT, for details.

DATA PROTECTION – USE OF YOUR INFORMATION

Where we obtain any personal information about you, we shall only use it in accordance with the terms of our Privacy Policy (subject to any additional specific consent(s) you may have given at the time your information was disclosed). A copy of our Privacy Policy can be found on our *Website* www.bonhams.com or requested by post from Customer Services Department, 101 New Bond Street, London, W1S 1SR or by email from info@bonhams.com

APPENDIX 1

CONTRACT FOR SALE

IMPORTANT: These terms may be changed in advance of the *Sale* of the *Lot* to you, by the setting out of different terms in the *Catalogue* for the *Sale* and/or by placing an insert in the *Catalogue* and/or by notices at the *Sale* venue and/or by oral announcements before and during the *Sale* at the *Sale* venue. You should be alert to this possibility of changes and ask in advance of bidding if there have been any.

Under this contract the *Seller's* liability in respect of the quality of the *Lot*, it's fitness for any purpose and its conformity with any *Description* is limited. You are strongly advised to examine the *Lot* for yourself and/or obtain an independent examination of it before you buy it.

1 THE CONTRACT

- 1.1 These terms govern the *Contract for Sale* of the *Lot* by the *Seller* to the *Buyer*.
- 1.2 The Definitions and Glossary contained in Appendix 3 in the *Catalogue* are incorporated into this *Contract for Sale* and a separate copy can also be provided by *Bonhams* on request. Where words and phrases are used which are in the List of Definitions, they are printed in italics.
- 1.3 The *Seller* sells the *Lot* as the principal to the *Contract for Sale*, such contract being made between the *Seller* and you through *Bonhams* which acts in the sole capacity as the *Seller's* agent and not as an additional principal. However, if the *Catalogue* states that *Bonhams* sells the *Lot* as principal, or such a statement is made by an announcement by the *Auctioneer*, or by a notice at the *Sale*, or an insert in the *Catalogue*, then *Bonhams* is the *Seller* for the purposes of this agreement.

- 1.4 The contract is made on the fall of the *Auctioneer's* hammer in respect of the *Lot* when it is knocked down to you.

2 SELLER'S UNDERTAKINGS

- 2.1 The *Seller* undertakes to you that:
- 2.1.1 the *Seller* is the owner of the *Lot* or is duly authorised to sell the *Lot* by the owner;
- 2.1.2 save as disclosed in the *Entry* for the *Lot* in the *Catalogue*, the *Seller* sells the *Lot* with full title guarantee or, where the *Seller* is an executor, trustee, liquidator, receiver or administrator, with whatever right, title or interest he may have in the *Lot*;
- 2.1.3 except where the *Sale* is by an executor, trustee, liquidator, receiver or administrator the *Seller* is both legally entitled to sell the *Lot*, and legally capable of conferring on you quiet possession of the *Lot* and that the *Sale* conforms in every respect with the terms implied by the Sale of Goods Act 1979, Sections 12(1) and 12(2) (see the Definitions and Glossary);
- 2.1.4 the *Seller* has complied with all requirements, legal or otherwise, relating to any export or import of the *Lot*, and all duties and taxes in respect of the export or import of the *Lot* have (unless stated to the contrary in the *Catalogue* or announced by the *Auctioneer*) been paid and, so far as the *Seller* is aware, all third parties have complied with such requirements in the past;
- 2.1.5 subject to any alterations expressly identified as such made by announcement or notice at the *Sale* venue or by the *Notice to Bidders* or by an insert in the *Catalogue*, the *Lot* corresponds with the *Contractual Description* of the *Lot*, being that part of the *Entry* about the *Lot* in the *Catalogue* which is in bold letters and (except for colour) with any photograph of the *Lot* in the *Catalogue* and the contents of any *Condition Report* which has been provided to the *Buyer*.

3 DESCRIPTIONS OF THE LOT

- 3.1 Paragraph 2.1.5 sets out what is the *Contractual Description* of the *Lot*. In particular, the *Lot* is not sold as corresponding with that part of the *Entry* in the *Catalogue* which is not printed in bold letters, which merely sets out (on the *Seller's* behalf) *Bonhams'* opinion about the *Lot* and which is not part of the *Contractual Description* upon which the *Lot* is sold. Any statement or representation other than that part of the *Entry* referred to in paragraph 2.1.5 (together with any express alteration to it as referred to in paragraph 2.1.5), including any *Description* or *Estimate*, whether made orally or in writing, including in the *Catalogue* or on *Bonhams'* *Website*, or by conduct, or otherwise, and whether by or on behalf of the *Seller* or *Bonhams* and whether made prior to or during the *Sale*, is not part of the *Contractual Description* upon which the *Lot* is sold.
- 3.2 Except as provided in paragraph 2.1.5, the *Seller* does not make or give and does not agree to make or give any contractual promise, undertaking, obligation, guarantee, warranty, or representation of fact, or undertake any duty of care, in relation to any *Description* of the *Lot* or any *Estimate* in relation to it, nor of the accuracy or completeness of any *Description* or *Estimate* which may have been made by or on behalf of the *Seller* including by *Bonhams*. No such *Description* or *Estimate* is incorporated into this *Contract for Sale*.

4 FITNESS FOR PURPOSE AND SATISFACTORY QUALITY

- 4.1 The *Seller* does not make and does not agree to make any contractual promise, undertaking, obligation, guarantee, warranty, or representation of fact in relation to the satisfactory quality of the *Lot* or its fitness for any purpose.

- 4.2 The *Seller* will not be liable for any breach of any undertaking, whether implied by the Sale of Goods Act 1979 or otherwise, as to the satisfactory quality of the *Lot* or its fitness for any purpose.

5 RISK, PROPERTY AND TITLE

- 5.1 Risk in the *Lot* passes to you when it is knocked down to you on the fall of the *Auctioneer's* hammer in respect of the *Lot*. The *Seller* will not be responsible thereafter for the *Lot* prior to you collecting it from *Bonhams* or the *Storage Contractor*, with whom you have separate contract(s) as *Buyer*. You will indemnify the *Seller* and keep the *Seller* fully indemnified from and against all claims, proceedings, costs, expenses and losses arising in respect of any injury, loss and damage caused to the *Lot* after the fall of the *Auctioneer's* hammer until you obtain full title to it.
- 5.2 Title to the *Lot* remains in and is retained by the *Seller* until the *Purchase Price* and all other sums payable by you to *Bonhams* in relation to the *Lot* have been paid in full to, and received in cleared funds by, *Bonhams*.

6 PAYMENT

- 6.1 Your obligation to pay the *Purchase Price* arises when the *Lot* is knocked down to you on the fall of the *Auctioneer's* hammer in respect of the *Lot*.
- 6.2 Time will be of the essence in relation to payment of the *Purchase Price* and all other sums payable by you to *Bonhams*. Unless agreed in writing with you by *Bonhams* on the *Seller's* behalf (in which case you must comply with the terms of that agreement), all such sums must be paid to *Bonhams* by you in the currency in which the *Sale* was conducted by not later than 4.30pm on the second working day following the *Sale* and you must ensure that the funds are cleared by the seventh working day after the *Sale*. Payment must be made to *Bonhams* by one of the methods stated in the *Notice to Bidders* unless otherwise agreed with you in writing by *Bonhams*. If you do not pay any sums due in accordance with this paragraph, the *Seller* will have the rights set out in paragraph 8 below.

7 COLLECTION OF THE LOT

- 7.1 Unless otherwise agreed in writing with you by *Bonhams*, the *Lot* will be released to you or to your order only when *Bonhams* has received cleared funds to the amount of the full *Purchase Price* and all other sums owed by you to the *Seller* and to *Bonhams*.
- 7.2 The *Seller* is entitled to withhold possession from you of any other *Lot* he has sold to you at the same or at any other *Sale* and whether currently in *Bonhams'* possession or not until payment in full and in cleared funds of the *Purchase Price* and all other sums due to the *Seller* and/or *Bonhams* in respect of the *Lot*.
- 7.3 You will collect and remove the *Lot* at your own expense from *Bonhams'* custody and/ or control or from the *Storage Contractor's* custody in accordance with *Bonhams'* instructions or requirements.
- 7.4 You will be wholly responsible for packing, handling and transport of the *Lot* on collection and for complying with all import or export regulations in connection with the *Lot*.
- 7.5 You will be wholly responsible for any removal, storage or other charges or *Expenses* incurred by the *Seller* if you do not remove the *Lot* in accordance with this paragraph 7 and will indemnify the *Seller* against all charges, costs, including any legal costs and fees, *Expenses* and losses suffered by the *Seller* by reason of your failure to remove the *Lot* including any charges due under any *Storage Contract*. All such sums due to the *Seller* will be payable on demand.

8	FAILURE TO PAY FOR THE LOT	9	THE SELLER'S LIABILITY	10.3	If either party to the <i>Contract for Sale</i> is prevented from performing that party's respective obligations under the <i>Contract for Sale</i> by circumstances beyond its reasonable control or if performance of its obligations would by reason of such circumstances give rise to a significantly increased financial cost to it, that party will not, for so long as such circumstances prevail, be required to perform such obligations. This paragraph does not apply to the obligations imposed on you by paragraph 6.
8.1	If the <i>Purchase Price</i> for a <i>Lot</i> is not paid to <i>Bonhams</i> in full in accordance with the <i>Contract for Sale</i> the <i>Seller</i> will be entitled, with the prior written agreement of <i>Bonhams</i> but without further notice to you, to exercise one or more of the following rights (whether through <i>Bonhams</i> or otherwise):	9.1	The <i>Seller</i> will not be liable for any injury, loss or damage caused by the <i>Lot</i> after the fall of the <i>Auctioneer's</i> hammer in respect of the <i>Lot</i> .	10.4	Any notice or other communication to be given under the <i>Contract for Sale</i> must be in writing and may be delivered by hand or sent by first class post or air mail or fax transmission, if to the <i>Seller</i> , addressed c/o <i>Bonhams</i> at its address or fax number in the <i>Catalogue</i> (marked for the attention of the Company Secretary), and if to you to the address or fax number of the <i>Buyer</i> given in the <i>Bidding Form</i> (unless notice of any change of address is given in writing). It is the responsibility of the sender of the notice or communication to ensure that it is received in a legible form within any applicable time period.
8.1.1	to terminate immediately the <i>Contract for Sale</i> of the <i>Lot</i> for your breach of contract;	9.2	Subject to paragraph 9.3 below, except for breach of the express undertaking provided in paragraph 2.1.5, the <i>Seller</i> will not be liable for any breach of any term that the <i>Lot</i> will correspond with any <i>Description</i> applied to it by or on behalf of the <i>Seller</i> , whether implied by the Sale of Goods Act 1979 or otherwise.	10.5	If any term or any part of any term of the <i>Contract for Sale</i> is held to be unenforceable or invalid, such unenforceability or invalidity will not affect the enforceability and validity of the remaining terms or the remainder of the relevant term.
8.1.2	to resell the <i>Lot</i> by auction, private treaty or any other means on giving seven days' written notice to you of the intention to resell;	9.3	Unless the <i>Seller</i> sells the <i>Lot</i> in the course of a <i>Business</i> and the <i>Buyer</i> buys it as a <i>Consumer</i> ,	10.6	References in the <i>Contract for Sale</i> to <i>Bonhams</i> will, where appropriate, include reference to <i>Bonhams'</i> officers, employees and agents.
8.1.3	to retain possession of the <i>Lot</i> ;	9.3.1	the <i>Seller</i> will not be liable (whether in negligence, other tort, breach of contract or statutory duty or in restitution or under the Misrepresentation Act 1967, or in any other way) for any lack of conformity with, or inaccuracy, error, misdescription or omission in any <i>Description</i> of the <i>Lot</i> or any <i>Entry</i> or <i>Estimate</i> in relation to the <i>Lot</i> made by or on behalf of the <i>Seller</i> (whether made in writing, including in the <i>Catalogue</i> , or on the <i>Website</i> , or orally, or by conduct or otherwise) and whether made before or after this agreement or prior to or during the <i>Sale</i> ;	10.7	The headings used in the <i>Contract for Sale</i> are for convenience only and will not affect its interpretation.
8.1.4	to remove and store the <i>Lot</i> at your expense;	9.3.2	the <i>Seller</i> will not be liable for any loss of <i>Business</i> , <i>Business</i> profits or revenue or income or for loss of reputation or for disruption to <i>Business</i> or wasted time on the part of the <i>Buyer</i> or of the <i>Buyer's</i> management or staff or, for any indirect losses or consequential damages of any kind, irrespective in any case of the nature, volume or source of the loss or damage alleged to be suffered, and irrespective of whether the said loss or damage is caused by or claimed in respect of any negligence, other tort, breach of contract, statutory duty, restitutionary claim or otherwise;	10.8	In the <i>Contract for Sale</i> "including" means "including, without limitation".
8.1.5	to take legal proceedings against you for any sum due under the <i>Contract for Sale</i> and/or damages for breach of contract;	9.3.3	in any circumstances where the <i>Seller</i> is liable to you in respect of the <i>Lot</i> , or any act, omission, statement, or representation in respect of it, or this agreement or its performance, and whether in damages, for an indemnity or contribution or for a restitutionary remedy or in any way whatsoever, the <i>Seller's</i> liability will be limited to payment of a sum which will not exceed by way of maximum the amount of the <i>Purchase Price</i> of the <i>Lot</i> irrespective in any case of the nature, volume or source of any loss or damage alleged to be suffered or sum claimed as due, and irrespective of whether the liability arises from any negligence, other tort, breach of contract, statutory duty, bailee's duty, restitutionary claim or otherwise.	10.9	References to the singular will include reference to the plural (and vice versa) and reference to any one gender will include reference to the other genders.
8.1.6	to be paid interest on any monies due (after as well as before judgement or order) at the annual rate of 5% per annum above the base rate of National Westminster Bank Plc from time to time to be calculated on a daily basis from the date upon which such monies become payable until the date of actual payment;	9.4	Nothing set out in paragraphs 9.1 to 9.3 above will be construed as excluding or restricting (whether directly or indirectly) any person's liability or excluding or restricting any person's rights or remedies in respect of (i) fraud, or (ii) death or personal injury caused by the <i>Seller's</i> negligence (or any person under the <i>Seller's</i> control or for whom the <i>Seller</i> is legally responsible), or (iii) acts or omissions for which the <i>Seller</i> is liable under the Occupiers Liability Act 1957, or (iv) any other liability to the extent the same may not be excluded or restricted as a matter of law.	10.10	Reference to a numbered paragraph is to a paragraph of the <i>Contract for Sale</i> .
8.1.7	to repossess the <i>Lot</i> (or any part thereof) which has not become your property, and for this purpose (unless the <i>Buyer</i> buys the <i>Lot</i> as a <i>Consumer</i> from the <i>Seller</i> selling in the course of a <i>Business</i>) you hereby grant an irrevocable licence to the <i>Seller</i> by himself and to his servants or agents to enter upon all or any of your premises (with or without vehicles) during normal <i>Business</i> hours to take possession of the <i>Lot</i> or part thereof;			10.11	Save as expressly provided in paragraph 10.12 nothing in the <i>Contract for Sale</i> confers (or purports to confer) on any person who is not a party to the <i>Contract for Sale</i> any benefit conferred by, or the right to enforce any term of, the <i>Contract for Sale</i> .
8.1.8	to retain possession of any other property sold to you by the <i>Seller</i> at the <i>Sale</i> or any other auction or by private treaty until all sums due under the <i>Contract for Sale</i> shall have been paid in full in cleared funds;			10.12	Where the <i>Contract for Sale</i> confers an immunity from, and/or an exclusion or restriction of, the responsibility and/or liability of the <i>Seller</i> , it will also operate in favour and for the benefit of <i>Bonhams</i> , <i>Bonhams'</i> holding company and the subsidiaries of such holding company and the successors and assigns of <i>Bonhams</i> and of such companies and of any officer, employee and agent of <i>Bonhams</i> and such companies, each of whom will be entitled to rely on the relevant immunity and/or exclusion and/or restriction within and for the purposes of Contracts (Rights of Third Parties) Act 1999, which enables the benefit of a contract to be extended to a person who is not a party to the contract, and generally at law.
8.1.9	to retain possession of, and on seven days written notice to sell, <i>Without Reserve</i> , any of your other property in the possession of the <i>Seller</i> and/or of <i>Bonhams</i> (as bailee for the <i>Seller</i>) for any purpose (including, without limitation, other goods sold to you) and to apply any monies due to you as a result of such <i>Sale</i> in satisfaction or part satisfaction of any amounts owed to the <i>Seller</i> or to <i>Bonhams</i> ; and			11	GOVERNING LAW
8.1.10	so long as such goods remain in the possession of the <i>Seller</i> or <i>Bonhams</i> as its bailee, to rescind the contract for the <i>Sale</i> of any other goods sold to you by the <i>Seller</i> at the <i>Sale</i> or at any other auction or by private treaty and apply any monies received from you in respect of such goods in part or full satisfaction of any amounts owed to the <i>Seller</i> or to <i>Bonhams</i> by you.				All transactions to which the <i>Contract for Sale</i> applies and all connected matters will be governed by and construed in accordance with the laws of that part of the United Kingdom where the <i>Sale</i> takes place and the <i>Seller</i> and you each submit to the exclusive jurisdiction of the courts of that part of the United Kingdom, save that the <i>Seller</i> may bring proceedings against you in any other court of competent jurisdiction to the extent permitted by the laws of the relevant jurisdiction. <i>Bonhams</i> has a complaints procedure in place.
8.2	You agree to indemnify the <i>Seller</i> against all legal and other costs of enforcement, all losses and other <i>Expenses</i> and costs (including any monies payable to <i>Bonhams</i> in order to obtain the release of the <i>Lot</i>) incurred by the <i>Seller</i> (whether or not court proceedings will have been issued) as a result of <i>Bonhams</i> taking steps under this paragraph 8 on a full indemnity basis together with interest thereon (after as well as before judgement or order) at the rate specified in paragraph 8.1.6 from the date upon which the <i>Seller</i> becomes liable to pay the same until payment by you.	10	MISCELLANEOUS		
8.3	On any resale of the <i>Lot</i> under paragraph 8.1.2, the <i>Seller</i> will account to you in respect of any balance remaining from any monies received by him or on his behalf in respect of the <i>Lot</i> , after the payment of all sums due to the <i>Seller</i> and to <i>Bonhams</i> , within 28 days of receipt of such monies by him or on his behalf.	10.1	You may not assign either the benefit or burden of the <i>Contract for Sale</i> .		
		10.2	The <i>Seller's</i> failure or delay in enforcing or exercising any power or right under the <i>Contract for Sale</i> will not operate or be deemed to operate as a waiver of his rights under it except to the extent of any express waiver given to you in writing. Any such waiver will not affect the <i>Seller's</i> ability subsequently to enforce any right arising under the <i>Contract for Sale</i> .		

APPENDIX 2

BUYER'S AGREEMENT

IMPORTANT: These terms may be changed in advance of the *Sale* of the *Lot* to you, by the setting out of different terms in the *Catalogue* for the *Sale* and/or by placing an insert in the *Catalogue* and/or by notices at the *Sale* venue and/or by oral announcements before and during the *Sale* at the *Sale* venue. You should be alert to this possibility of changes and ask in advance of bidding if there have been any.

1 THE CONTRACT

- 1.1 These terms govern the contract between *Bonhams* personally and the *Buyer*, being the person to whom a *Lot* has been knocked down by the *Auctioneer*.
- 1.2 The Definitions and Glossary contained in Appendix 3 to the *Catalogue* for the *Sale* are incorporated into this agreement and a separate copy can also be provided by us on request. Where words and phrases which are defined in the List of Definitions are used in this agreement, they are printed in italics. Reference is made in this agreement to information printed in the *Notice to Bidders*, printed in the *Catalogue* for the *Sale*, and where such information is referred to it is incorporated into this agreement.
- 1.3 Except as specified in paragraph 4 of the *Notice to Bidders* the *Contract for Sale* of the *Lot* between you and the *Seller* is made on the fall of the *Auctioneer's* hammer in respect of the *Lot*, when it is knocked down to you. At that moment a separate contract is also made between you and *Bonhams* on the terms in this *Buyer's Agreement*.
- 1.4 We act as agents for the *Seller* and are not answerable or personally responsible to you for any breach of contract or other default by the *Seller*, unless *Bonhams* sells the *Lot* as principal.
- 1.5 Our personal obligations to you are governed by this agreement and we agree, subject to the terms below, to the following obligations:
- 1.5.1 we will, until the date and time specified in the *Notice to Bidders* or otherwise notified to you, store the *Lot* in accordance with paragraph 5;
- 1.5.2 subject to any power of the *Seller* or us to refuse to release the *Lot* to you, we will release the *Lot* to you in accordance with paragraph 4 once you have paid to us, in cleared funds, everything due to us and the *Seller*;
- 1.5.3 we will provide guarantees in the terms set out in paragraphs 9 and 10.
- 1.6 We do not make or give and do not agree to make or give any contractual promise, undertaking, obligation, *Guarantee*, warranty, representation of fact in relation to any *Description* of the *Lot* or any *Estimate* in relation to it, nor of the accuracy or completeness of any *Description* or *Estimate* which may have been made by us or on our behalf or by or on behalf of the *Seller* (whether made orally or in writing, including in the *Catalogue* or on *Bonhams' Website*, or by conduct, or otherwise), and whether made before or after this agreement or prior to or during the *Sale*. No such *Description* or *Estimate* is incorporated into this agreement between you and us. Any such *Description* or *Estimate*, if made by us or on our behalf, was (unless *Bonhams* itself sells the *Lot* as principal) made as agent on behalf of the *Seller*.

2 PERFORMANCE OF THE CONTRACT FOR SALE

You undertake to us personally that you will observe and comply with all your obligations and undertakings to the *Seller* under the *Contract for Sale* in respect of the *Lot*.

3 PAYMENT

- 3.1 Unless agreed in writing between you and us or as otherwise set out in the *Notice to Bidders*, you must pay to us by not later than 4.30pm on the second working day following the *Sale*:
- 3.1.1 the *Purchase Price* for the *Lot*;
- 3.1.2 a *Buyer's Premium* in accordance with the rates set out in the *Notice to Bidders* on each lot, and
- 3.1.3 if the *Lot* is marked [AP], an *Additional Premium* which is calculated and payable in accordance with the *Notice to Bidders* together with VAT on that sum if applicable so that all sums due to us are cleared funds by the seventh working day after the *Sale*.
- 3.2 You must also pay us on demand any *Expenses* payable pursuant to this agreement.
- 3.3 All payments to us must be made in the currency in which the *Sale* was conducted, using, unless otherwise agreed by us in writing, one of the methods of payment set out in the *Notice to Bidders*. Our invoices will only be addressed to the registered *Bidder* unless the *Bidder* is acting as an agent for a named principal and we have approved that arrangement, in which case we will address the invoice to the principal.
- 3.4 Unless otherwise stated in this agreement all sums payable to us will be subject to VAT at the appropriate rate and VAT will be payable by you on all such sums.
- 3.5 We may deduct and retain for our own benefit from the monies paid by you to us the *Buyer's Premium*, the *Commission* payable by the *Seller* in respect of the *Lot*, any *Expenses* and VAT and any interest earned and/or incurred until payment to the *Seller*.
- 3.6 Time will be of the essence in relation to any payment payable to us. If you do not pay the *Purchase Price*, or any other sum due to us in accordance with this paragraph 3, we will have the rights set out in paragraph 7 below.
- 3.7 Where a number of *Lots* have been knocked down to you, any monies we receive from you will be applied firstly pro-rata to pay the *Purchase Price* of each *Lot* and secondly pro-rata to pay all amounts due to *Bonhams*.

4 COLLECTION OF THE LOT

- 4.1 Subject to any power of the *Seller* or us to refuse to release the *Lot* to you, once you have paid to us, in cleared funds, everything due to the *Seller* and to us, we will release the *Lot* to you or as you may direct us in writing. The *Lot* will only be released on production of a buyer collection document, obtained from our cashier's office.
- 4.2 You must collect and remove the *Lot* at your own expense by the date and time specified in the *Notice to Bidders*, or if no date is specified, by 4.30pm on the seventh day after the *Sale*.
- 4.3 For the period referred to in paragraph 4.2, the *Lot* can be collected from the address referred to in the *Notice to Bidders* for collection on the days and times specified in the *Notice to Bidders*. Thereafter, the *Lot* may be removed elsewhere for storage and you must enquire from us as to when and where you can collect it, although this information will usually be set out in the *Notice to Bidders*.

- 4.4 If you have not collected the *Lot* by the date specified in the *Notice to Bidders*, you authorise us, acting as your agent and on your behalf, to enter into a contract (the "*Storage Contract*") with the *Storage Contractor* for the storage of the *Lot* on the then current standard terms and conditions agreed between *Bonhams* and the *Storage Contractor* (copies of which are available on request). If the *Lot* is stored at our premises storage fees at our current daily rates (currently a minimum of £3 plus VAT per *Lot* per day) will be payable from the expiry of the period referred to in paragraph 4.2. These storage fees form part of our *Expenses*.
- 4.5 Until you have paid the *Purchase Price* and any *Expenses* in full the *Lot* will either be held by us as agent on behalf of the *Seller* or held by the *Storage Contractor* as agent on behalf of the *Seller* and ourselves on the terms contained in the *Storage Contract*.
- 4.6 You undertake to comply with the terms of any *Storage Contract* and in particular to pay the charges (and all costs of moving the *Lot* into storage) due under any *Storage Contract*. You acknowledge and agree that you will not be able to collect the *Lot* from the *Storage Contractor's* premises until you have paid the *Purchase Price*, any *Expenses* and all charges due under the *Storage Contract*.
- 4.7 You will be wholly responsible for packing, handling and transport of the *Lot* on collection and for complying with all import or export regulations in connection with the *Lot*.
- 4.8 You will be wholly responsible for any removal, storage, or other charges for any *Lot* not removed in accordance with paragraph 4.2, payable at our current rates, and any *Expenses* we incur (including any charges due under the *Storage Contract*), all of which must be paid by you on demand and in any event before any collection of the *Lot* by you or on your behalf.

5 STORING THE LOT

We agree to store the *Lot* until the earlier of your removal of the *Lot* or until the time and date set out in the *Notice to Bidders*, on the *Sale Information Page* or at the back of the catalogue (or if no date is specified, by 4.30pm on the seventh day after the *Sale*) and, subject to paragraphs 6 and 10, to be responsible as *bailee* to you for damage to or the loss or destruction of the *Lot* (notwithstanding that it is not your property before payment of the *Purchase Price*). If you do not collect the *Lot* before the time and date set out in the *Notice to Bidders* (or if no date is specified, by 4.30pm on the seventh day after the *Sale*) we may remove the *Lot* to another location, the details of which will usually be set out in the relevant section of the *Catalogue*. If you have not paid for the *Lot* in accordance with paragraph 3, and the *Lot* is moved to any third party's premises, the *Lot* will be held by such third party strictly to *Bonhams'* order and we will retain our lien over the *Lot* until we have been paid in full in accordance with paragraph 3.

6 RESPONSIBILITY FOR THE LOT

- 6.1 Only on the payment of the *Purchase Price* to us will title in the *Lot* pass to you. However under the *Contract for Sale*, the risk in the *Lot* passed to you when it was knocked down to you.
- 6.2 You are advised to obtain insurance in respect of the *Lot* as soon as possible after the *Sale*.

7	FAILURE TO PAY OR TO REMOVE THE LOT AND PART PAYMENTS		
7.1	If all sums payable to us are not so paid in full at the time they are due and/or the <i>Lot</i> is not removed in accordance with this agreement, we will without further notice to you be entitled to exercise one or more of the following rights (without prejudice to any rights we may exercise on behalf of the <i>Seller</i>):	7.3	If you pay us only part of the sums due to us such payment shall be applied firstly to the <i>Purchase Price</i> of the <i>Lot</i> (or where you have purchased more than one <i>Lot</i> pro-rata towards the <i>Purchase Price</i> of each <i>Lot</i>) and secondly to the <i>Buyer's Premium</i> (or where you have purchased more than one <i>Lot</i> pro-rata to the <i>Buyer's Premium</i> on each <i>Lot</i>) and thirdly to any other sums due to us.
7.1.1	to terminate this agreement immediately for your breach of contract;	7.4	We will account to you in respect of any balance we hold remaining from any monies received by us in respect of any <i>Sale</i> of the <i>Lot</i> under our rights under this paragraph 7 after the payment of all sums due to us and/or the <i>Seller</i> within 28 days of receipt by us of all such sums paid to us.
7.1.2	to retain possession of the <i>Lot</i> ;	8	CLAIMS BY OTHER PERSONS IN RESPECT OF THE LOT
7.1.3	to remove, and/or store the <i>Lot</i> at your expense;	8.1	Whenever it becomes apparent to us that the <i>Lot</i> is the subject of a claim by someone other than you and other than the <i>Seller</i> (or that such a claim can reasonably be expected to be made), we may, at our absolute discretion, deal with the <i>Lot</i> in any manner which appears to us to recognise the legitimate interests of ourselves and the other parties involved and lawfully to protect our position and our legitimate interests. Without prejudice to the generality of the discretion and by way of example, we may:
7.1.4	to take legal proceedings against you for payment of any sums payable to us by you (including the <i>Purchase Price</i>) and/or damages for breach of contract;	8.1.1	retain the <i>Lot</i> to investigate any question raised or reasonably expected by us to be raised in relation to the <i>Lot</i> ; and/or
7.1.5	to be paid interest on any monies due to us (after as well as before judgement or order) at the annual rate of 5% per annum above the base lending rate of National Westminster Bank Plc from time to time to be calculated on a daily basis from the date upon which such monies become payable until the date of actual payment;	8.1.2	deliver the <i>Lot</i> to a person other than you; and/or
7.1.6	to repossess the <i>Lot</i> (or any part thereof) which has not become your property, and for this purpose (unless you buy the <i>Lot</i> as a <i>Consumer</i>) you hereby grant an irrevocable licence to us, by ourselves, our servants or agents, to enter upon all or any of your premises (with or without vehicles) during normal business hours to take possession of any <i>Lot</i> or part thereof;	8.1.3	commence interpleader proceedings or seek any other order of any court, mediator, arbitrator or government body; and/or
7.1.7	to sell the <i>Lot Without Reserve</i> by auction, private treaty or any other means on giving you three months' written notice of our intention to do so;	8.1.4	require an indemnity and/or security from you in return for pursuing a course of action agreed to by you.
7.1.8	to retain possession of any of your other property in our possession for any purpose (including, without limitation, other goods sold to you or with us for <i>Sale</i>) until all sums due to us have been paid in full;	8.2	The discretion referred to in paragraph 8.1:
7.1.9	to apply any monies received from you for any purpose whether at the time of your default or at any time thereafter in payment or part payment of any sums due to us by you under this agreement;	8.2.1	may be exercised at any time during which we have actual or constructive possession of the <i>Lot</i> , or at any time after such possession, where the cessation of such possession has occurred by reason of any decision, order or ruling of any court, mediator, arbitrator or government body; and
7.1.10	on three months' written notice to sell, <i>Without Reserve</i> , any of your other property in our possession or under our control for any purpose (including other goods sold to you or with us for <i>Sale</i>) and to apply any monies due to you as a result of such <i>Sale</i> in payment or part payment of any amounts owed to us;	8.2.2	will not be exercised unless we believe that there exists a serious prospect of a good arguable case in favour of the claim.
7.1.11	refuse to allow you to register for a future <i>Sale</i> or to reject a bid from you at any future <i>Sale</i> or to require you to pay a deposit before any bid is accepted by us at any future <i>Sale</i> in which case we will be entitled to apply such deposit in payment or part payment, as the case may be, of the <i>Purchase Price</i> of any <i>Lot</i> of which you are the <i>Buyer</i> .	9	FORGERIES
7.2	You agree to indemnify us against all legal and other costs, all losses and all other <i>Expenses</i> (whether or not court proceedings will have been issued) incurred by us as a result of our taking steps under this paragraph 7 on a full indemnity basis together with interest thereon (after as well as before judgement or order) at the rate specified in paragraph 7.1.5 from the date upon which we become liable to pay the same until payment by you.	9.1	We undertake a personal responsibility for any <i>Forgery</i> in accordance with the terms of this paragraph 9.
		9.2	Paragraph 9 applies only if:
		9.2.1	your name appears as the named person to whom the original invoice was made out by us in respect of the <i>Lot</i> and that invoice has been paid; and
		9.2.2	you notify us in writing as soon as reasonably practicable after you have become aware that the <i>Lot</i> is or may be a <i>Forgery</i> , and in any event within one year after the <i>Sale</i> , that the <i>Lot</i> is a <i>Forgery</i> ; and
		9.2.3	within one month after such notification has been given, you return the <i>Lot</i> to us in the same condition as it was at the time of the <i>Sale</i> , accompanied by written evidence that the <i>Lot</i> is a <i>Forgery</i> and details of the <i>Sale</i> and <i>Lot</i> number sufficient to identify the <i>Lot</i> .
		9.3	Paragraph 9 will not apply in respect of a <i>Forgery</i> if:
		9.3.1	the <i>Entry</i> in relation to the <i>Lot</i> contained in the <i>Catalogue</i> reflected the then accepted general opinion of scholars and experts or fairly indicated that there was a conflict of such opinion or reflected the then current opinion of an expert acknowledged to be a leading expert in the relevant field; or
		9.3.2	it can be established that the <i>Lot</i> is a <i>Forgery</i> only by means of a process not generally accepted for use until after the date on which the <i>Catalogue</i> was published or by means of a process which it was unreasonable in all the circumstances for us to have employed.
		9.4	You authorise us to carry out such processes and tests on the <i>Lot</i> as we in our absolute discretion consider necessary to satisfy ourselves that the <i>Lot</i> is or is not a <i>Forgery</i> .
		9.5	If we are satisfied that a <i>Lot</i> is a <i>Forgery</i> we will (as principal) purchase the <i>Lot</i> from you and you will transfer the title to the <i>Lot</i> in question to us, with full title guarantee, free from any liens, charges, encumbrances and adverse claims, in accordance with the provisions of Sections 12(1) and 12(2) of the Sale of Goods Act 1979 and we will pay to you an amount equal to the sum of the <i>Purchase Price</i> , <i>Buyer's Premium</i> , <i>VAT</i> and <i>Expenses</i> paid by you in respect of the <i>Lot</i> .
		9.6	The benefit of paragraph 9 is personal to, and incapable of assignment by, you.
		9.7	If you sell or otherwise dispose of your interest in the <i>Lot</i> , all rights and benefits under this paragraph will cease.
		9.8	Paragraph 9 does not apply to a <i>Lot</i> made up of or including a Chinese painting or Chinese paintings, a motor vehicle or motor vehicles, a <i>Stamp</i> or <i>Stamps</i> or a <i>Book</i> or <i>Books</i> .
		10	OUR LIABILITY
		10.1	We will not be liable whether in negligence, other tort, breach of contract or statutory duty or in restitution or under the Misrepresentation Act 1967 or in any other way for lack of conformity with or any inaccuracy, error, misdescription or omission in any <i>Description</i> of the <i>Lot</i> or any <i>Entry</i> or <i>Estimate</i> in respect of it, made by us or on our behalf or by or on behalf of the <i>Seller</i> (whether made in writing, including in the <i>Catalogue</i> , or on the <i>Bonhams' Website</i> , or orally, or by conduct or otherwise) and whether made before or after this agreement or prior to or during the <i>Sale</i> .
		10.2	Our duty to you while the <i>Lot</i> is at your risk and/or your property and in our custody and/or control is to exercise reasonable care in relation to it, but we will not be responsible for damage to the <i>Lot</i> or to other persons or things caused by:
		10.2.1	handling the <i>Lot</i> if it was affected at the time of <i>Sale</i> to you by woodworm and any damage is caused as a result of it being affected by woodworm; or
		10.2.2	changes in atmospheric pressure; nor will we be liable for:
		10.2.3	damage to tension stringed musical instruments; or
		10.2.4	damage to gilded picture frames, plaster picture frames or picture frame glass; and if the <i>Lot</i> is or becomes dangerous, we may dispose of it without notice to you in advance in any manner we think fit and we will be under no liability to you for doing so.

10.3.1	We will not be liable to you for any loss of <i>Business</i> , <i>Business</i> profits, revenue or income or for loss of <i>Business</i> reputation or for disruption to <i>Business</i> or wasted time on the part of the <i>Buyer's</i> management or staff or, if you are buying the <i>Lot</i> in the course of a <i>Business</i> , for any indirect losses or consequential damages of any kind, irrespective in any case of the nature, volume or source of the loss or damage alleged to be suffered, and irrespective of whether the said loss or damage is caused by or claimed in respect of any negligence, other tort, breach of contract, statutory duty, bailee's duty, a restitutionary claim or otherwise.	the <i>Entry</i> in the <i>Catalogue</i> in respect of the <i>Lot</i> reflected the then accepted general opinion of scholars and experts or fairly indicated that there was a conflict of such opinion; or	12.7	The headings used in this agreement are for convenience only and will not affect its interpretation.
10.3.2	Unless you buy the <i>Lot</i> as a <i>Consumer</i> , in any circumstances where we are liable to you in respect of a <i>Lot</i> , or any act, omission, statement, representation in respect of it, or this agreement or its performance, and whether in damages, for an indemnity or contribution or for a restitutionary remedy or in any way whatsoever, our liability will be limited to payment of a sum which will not exceed by way of maximum the amount of the <i>Purchase Price</i> of the <i>Lot</i> plus <i>Buyer's Premium</i> (less any sum you may be entitled to recover from the <i>Seller</i>) irrespective in any case of the nature, volume or source of any loss or damage alleged to be suffered or sum claimed as due, and irrespective of whether the liability arises from negligence, other tort, breach of contract, statutory duty, bailee's duty, a restitutionary claim or otherwise.	it can be established that the <i>Lot</i> is a non-conforming <i>Lot</i> only by means of a process not generally accepted for use until after the date on which the <i>Catalogue</i> was published or by means of a process which it was unreasonable in all the circumstances for us to have employed; or	12.8	In this agreement "including" means "including, without limitation".
	You may wish to protect yourself against loss by obtaining insurance.	the <i>Lot</i> comprises atlases, maps, autographs, manuscripts, extra illustrated books, music or periodical publications; or	12.9	References to the singular will include reference to the plural (and vice versa) and reference to any one gender will include reference to the other genders.
10.4	Nothing set out above will be construed as excluding or restricting (whether directly or indirectly) any person's liability or excluding or restricting any person's rights or remedies in respect of (i) fraud, or (ii) death or personal injury caused by our negligence (or any person under our control or for whom we are legally responsible), or (iii) acts or omissions for which we are liable under the Occupiers Liability Act 1957, or (iv) any other liability to the extent the same may not be excluded or restricted as a matter of law, or (v) under our undertaking in paragraph 9 of these conditions.	the <i>Lot</i> was listed in the <i>Catalogue</i> under "collections" or "collections and various" or the <i>Lot</i> was stated in the <i>Catalogue</i> to comprise or contain a collection, issue or <i>Books</i> which are undescribed or the missing text or illustrations are referred to or the relevant parts of the <i>Book</i> contain blanks, half titles or advertisements.	12.10	Reference to a numbered paragraph is to a paragraph of this agreement.
11	BOOKS MISSING TEXT OR ILLUSTRATIONS Where the <i>Lot</i> is made up wholly of a <i>Book</i> or <i>Books</i> and any <i>Book</i> does not contain text or illustrations (in either case referred to as a "non-conforming <i>Lot</i> "), we undertake a personal responsibility for such a non-conforming <i>Lot</i> in accordance with the terms of this paragraph, if: the original invoice was made out by us to you in respect of the <i>Lot</i> and that invoice has been paid; and you notify us in writing as soon as reasonably practicable after you have become aware that the <i>Lot</i> is or may be a non-conforming <i>Lot</i> , and in any event within 20 days after the <i>Sale</i> (or such longer period as we may agree in writing) that the <i>Lot</i> is a non-conforming <i>Lot</i> ; and within 20 days of the date of the relevant <i>Sale</i> (or such longer period as we may agree in writing) you return the <i>Lot</i> to us in the same condition as it was at the time of the <i>Sale</i> , accompanied by written evidence that the <i>Lot</i> is a non-conforming <i>Lot</i> and details of the <i>Sale</i> and <i>Lot</i> number sufficient to identify the <i>Lot</i> . but not if: the <i>Entry</i> in the <i>Catalogue</i> in respect of the <i>Lot</i> indicates that the rights given by this paragraph do not apply to it; or	If we are reasonably satisfied that a <i>Lot</i> is a non-conforming <i>Lot</i> , we will (as principal) purchase the <i>Lot</i> from you and you will transfer the title to the <i>Lot</i> in question to us, with full title guarantee, free from any liens, charges, encumbrances and adverse claims and we will pay to you an amount equal to the sum of the <i>Purchase Price</i> and <i>Buyer's Premium</i> paid by you in respect of the <i>Lot</i> . The benefit of paragraph 10 is personal to, and incapable of assignment by, you and if you sell or otherwise dispose of your interest in the <i>Lot</i> , all rights and benefits under this paragraph will cease.	12.11	Save as expressly provided in paragraph 12.12 nothing in this agreement confers (or purports to confer) on any person who is not a party to this agreement any benefit conferred by, or the right to enforce any term of, this agreement.
			12.12	Where this agreement confers an immunity from, and/or an exclusion or restriction of, the responsibility and/or liability of <i>Bonhams</i> , it will also operate in favour and for the benefit of <i>Bonhams'</i> holding company and the subsidiaries of such holding company and the successors and assigns of <i>Bonhams</i> and of such companies and of any officer, employee and agent of <i>Bonhams</i> and such companies, each of whom will be entitled to rely on the relevant immunity and/or exclusion and/or restriction within and for the purposes of Contracts (Rights of Third Parties) Act 1999, which enables the benefit of a contract to be extended to a person who is not a party to the contract, and generally at law.
		12 MISCELLANEOUS	13	GOVERNING LAW All transactions to which this agreement applies and all connected matters will be governed by and construed in accordance with the laws of that part of the United Kingdom where the <i>Sale</i> takes (or is to take) place and we and you each submit to the exclusive jurisdiction of the courts of that part of the United Kingdom, save that we may bring proceedings against you in any other court of competent jurisdiction to the extent permitted by the laws of the relevant jurisdiction. <i>Bonhams</i> has a complaints procedure in place.
		12.1 You may not assign either the benefit or burden of this agreement.		DATA PROTECTION – USE OF YOUR INFORMATION Where we obtain any personal information about you, we shall only use it in accordance with the terms of our Privacy Policy (subject to any additional specific consent(s) you may have given at the time your information was disclosed). A copy of our Privacy Policy can be found on our <i>Website</i> www.bonhams.com or requested by post from Customer Services Department, 101 New Bond Street, London W1S 1SR, United Kingdom or by email from info@bonhams.com.
		12.2 Our failure or delay in enforcing or exercising any power or right under this agreement will not operate or be deemed to operate as a waiver of our rights under it except to the extent of any express waiver given to you in writing. Any such waiver will not affect our ability subsequently to enforce any right arising under this agreement.		APPENDIX 3
		12.3 If either party to this agreement is prevented from performing that party's respective obligations under this agreement by circumstances beyond its reasonable control or if performance of its obligations would by reason of such circumstances give rise to a significantly increased financial cost to it, that party will not, for so long as such circumstances prevail, be required to perform such obligations. This paragraph does not apply to the obligations imposed on you by paragraph 3.		DEFINITIONS AND GLOSSARY Where these Definitions and Glossary are incorporated, the following words and phrases used have (unless the context otherwise requires) the meanings given to them below. The Glossary is to assist you to understand words and phrases which have a specific legal meaning with which you may not be familiar.
		12.4 Any notice or other communication to be given under this agreement must be in writing and may be delivered by hand or sent by first class post or air mail or fax transmission (if to <i>Bonhams</i> marked for the attention of the Company Secretary), to the address or fax number of the relevant party given in the <i>Contract Form</i> (unless notice of any change of address is given in writing). It is the responsibility of the sender of the notice or communication to ensure that it is received in a legible form within any applicable time period.		LIST OF DEFINITIONS "Additional Premium" a premium, calculated in accordance with the <i>Notice to Bidders</i> , to cover <i>Bonhams' Expenses</i> relating to the payment of royalties under the Artists Resale Right Regulations 2006 which is payable by the <i>Buyer</i> to <i>Bonhams</i> on any <i>Lot</i> marked [AR] which sells for a <i>Hammer Price</i> which together with the <i>Buyer's Premium</i> (but excluding any VAT) equals or exceeds 1000 euros (converted into the currency of the <i>Sale</i> using the European Central Bank Reference rate prevailing on the date of the <i>Sale</i>). "Auctioneer" the representative of <i>Bonhams</i> conducting the <i>Sale</i> .
		12.5 If any term or any part of any term of this agreement is held to be unenforceable or invalid, such unenforceability or invalidity will not affect the enforceability and validity of the remaining terms or the remainder of the relevant term.		
		12.6 References in this agreement to <i>Bonhams</i> will, where appropriate, include reference to <i>Bonhams'</i> officers, employees and agents.		

"Bidder" a person who has completed a *Bidding Form*.

"Bidding Form" our Bidding Registration Form, our Absentee Bidding Form or our Telephone Bidding Form.

"Bonhams" Bonhams 1793 Limited or its successors or assigns. *Bonhams* is also referred to in the *Buyer's Agreement*, the Conditions of Business and the *Notice to Bidders* by the words "we", "us" and "our".

"Book" a printed *Book* offered for *Sale* at a specialist *Book Sale*.

"Business" includes any trade, *Business* and profession.

"Buyer" the person to whom a *Lot* is knocked down by the *Auctioneer*. The *Buyer* is also referred to in the *Contract for Sale* and the *Buyer's Agreement* by the words "you" and "your".

"Buyer's Agreement" the contract entered into by *Bonhams* with the *Buyer* (see Appendix 2 in the *Catalogue*).

"Buyer's Premium" the sum calculated on the *Hammer Price* at the rates stated in the *Notice to Bidders*.

"Catalogue" the *Catalogue* relating to the relevant *Sale*, including any representation of the *Catalogue* published on our *Website*.

"Commission" the *Commission* payable by the *Seller* to *Bonhams* calculated at the rates stated in the *Contract Form*.

"Condition Report" a report on the physical condition of a *Lot* provided to a *Bidder* or potential *Bidder* by *Bonhams* on behalf of the *Seller*.

"Conditions of Sale" the *Notice to Bidders*, *Contract for Sale*, *Buyer's Agreement* and Definitions and Glossary.

"Consignment Fee" a fee payable to *Bonhams* by the *Seller* calculated at rates set out in the Conditions of Business.

"Consumer" a natural person who is acting for the relevant purpose outside his trade, *Business* or profession.

"Contract Form" the *Contract Form*, or vehicle *Entry* form, as applicable, signed by or on behalf of the *Seller* listing the *Lots* to be offered for *Sale* by *Bonhams*.

"Contract for Sale" the *Sale* contract entered into by the *Seller* with the *Buyer* (see Appendix 1 in the *Catalogue*).

"Contractual Description" the only *Description* of the *Lot* (being that part of the *Entry* about the *Lot* in the *Catalogue* which is in bold letters, any photograph (except for the colour) and the contents of any *Condition Report*) to which the *Seller* undertakes in the *Contract for Sale* the *Lot* corresponds.

"Description" any statement or representation in any way descriptive of the *Lot*, including any statement or representation relating to its authorship, attribution, condition, provenance, authenticity, style, period, age, suitability, quality, origin, value, estimated selling price (including the *Hammer Price*).

"Entry" a written statement in the *Catalogue* identifying the *Lot* and its *Lot* number which may contain a *Description* and illustration(s) relating to the *Lot*.

"Estimate" a statement of our opinion of the range within which the hammer is likely to fall.

"Expenses" charges and *Expenses* paid or payable by *Bonhams* in respect of the *Lot* including legal *Expenses*, banking charges and *Expenses* incurred as a result of an electronic transfer of money, charges and *Expenses* for loss and damage cover, insurance, *Catalogue* and other reproductions and illustrations, any customs duties, advertising, packing or shipping costs, reproductions rights' fees, taxes, levies, costs of testing, searches or enquiries, preparation of the *Lot* for *Sale*, storage charges, removal charges, removal charges or costs of collection from the *Seller* as the *Seller's* agents or from a defaulting *Buyer*, plus *VAT* if applicable.

"Forgery" an imitation intended by the maker or any other person to deceive as to authorship, attribution, origin, authenticity, style, date, age, period, provenance, culture, source or composition, which at the date of the *Sale* had a value materially less than it would have had if the *Lot* had not been such an imitation, and which is not stated to be such an imitation in any description of the *Lot*. A *Lot* will not be a *Forgery* by reason of any damage to, and/or restoration and/or modification work (including repainting or over painting) having been carried out on the *Lot*, where that damage, restoration or modification work (as the case may be) does not substantially affect the identity of the *Lot* as one conforming to the *Description* of the *Lot*.

"Guarantee" the obligation undertaken personally by *Bonhams* to the *Buyer* in respect of any *Forgery* and, in the case of specialist *Stamp Sales* and/or specialist *Book Sales*, a *Lot* made up of a *Stamp* or *Stamps* or a *Book* or *Books* as set out in the *Buyer's Agreement*.

"Hammer Price" the price in the currency in which the *Sale* is conducted at which a *Lot* is knocked down by the *Auctioneer*.

"Loss and Damage Warranty" means the warranty described in paragraph 8.2 of the Conditions of Business.

"Loss and Damage Warranty Fee" means the fee described in paragraph 8.2.3 of the Conditions of Business.

"Lot" any item consigned to *Bonhams* with a view to its *Sale* at auction or by private treaty (and reference to any *Lot* will include, unless the context otherwise requires, reference to individual items comprised in a group of two or more items offered for *Sale* as one *Lot*).

"Motoring Catalogue Fee" a fee payable by the *Seller* to *Bonhams* in consideration of the additional work undertaken by *Bonhams* in respect of the cataloguing of motor vehicles and in respect of the promotion of *Sales* of motor vehicles.

"New Bond Street" means *Bonhams'* saleroom at 101 New Bond Street, London W1S 1SR.

"Notional Charges" the amount of *Commission* and *VAT* which would have been payable if the *Lot* had been sold at the *Notional Price*.

"Notional Fee" the sum on which the *Consignment Fee* payable to *Bonhams* by the *Seller* is based and which is calculated according to the formula set out in the Conditions of Business.

"Notional Price" the latest in time of the average of the high and low *Estimates* given by us to you or stated in the *Catalogue* or, if no such *Estimates* have been given or stated, the *Reserve* applicable to the *Lot*.

"Notice to Bidders" the notice printed at the back or front of our *Catalogues*.

"Purchase Price" the aggregate of the *Hammer Price* and *VAT* on the *Hammer Price* (where applicable), the *Buyer's Premium* and *VAT* on the *Buyer's Premium* and any *Expenses*.

"Reserve" the minimum price at which a *Lot* may be sold (whether at auction or by private treaty).

"Sale" the auction *Sale* at which a *Lot* is to be offered for *Sale* by *Bonhams*.

"Sale Proceeds" the net amount due to the *Seller* from the *Sale* of a *Lot*, being the *Hammer Price* less the *Commission*, any *VAT* chargeable thereon, *Expenses* and any other amount due to us in whatever capacity and howsoever arising.

"Seller" the person who offers the *Lot* for *Sale* named on the *Contract Form*. Where the person so named identifies on the form another person as acting as his agent, or where the person named on the *Contract Form* acts as an agent for a principal (whether such agency is disclosed to *Bonhams* or not), "*Seller*" includes both the agent and the principal who shall be jointly and severally liable as such. The *Seller* is also referred to in the Conditions of Business by the words "you" and "your".

"Specialist Examination" a visual examination of a *Lot* by a specialist on the *Lot*.

"Stamp" means a postage *Stamp* offered for *Sale* at a Specialist *Stamp Sale*.

"Standard Examination" a visual examination of a *Lot* by a non-specialist member of *Bonhams'* staff.

"Storage Contract" means the contract described in paragraph 8.3.3 of the Conditions of Business or paragraph 4.4 of the *Buyer's Agreement* (as appropriate).

"Storage Contractor" means the company identified as such in the *Catalogue*.

"Terrorism" means any act or threatened act of terrorism, whether any person is acting alone or on behalf of or in connection with any organisation(s) and/or government(s), committed for political, religious or ideological or similar purposes including, but not limited to, the intention to influence any government and/or put the public or any section of the public into fear.

"Trust Account" the bank account of *Bonhams* into which all sums received in respect of the *Purchase Price* of any *Lot* will be paid, such account to be a distinct and separate account to *Bonhams'* normal business bank account.

"VAT" value added tax at the prevailing rate at the date of the *Sale* in the United Kingdom.

"Website" *Bonhams Website* at www.bonhams.com

"Withdrawal Notice" the *Seller's* written notice to *Bonhams* revoking *Bonhams'* instructions to sell a *Lot*.

"Without Reserve" where there is no minimum price at which a *Lot* may be sold (whether at auction or by private treaty).

GLOSSARY

The following expressions have specific legal meanings with which you may not be familiar. The following glossary is intended to give you an understanding of those expressions but is not intended to limit their legal meanings:

"artist's resale right": the right of the creator of a work of art to receive a payment on *Sales* of that work subsequent to the original *Sale* of that work by the creator of it as set out in the Artists Resale Right Regulations 2006.

"bailee": a person to whom goods are entrusted.

"indemnity": an obligation to put the person who has the benefit of the indemnity in the same position in which he would have been, had the circumstances giving rise to the indemnity not arisen and the expression "indemnity" is construed accordingly.

"interpleader proceedings": proceedings in the Courts to determine ownership or rights over a *Lot*.

"knocked down": when a *Lot* is sold to a *Bidder*, indicated by the fall of the hammer at the *Sale*.

"lien": a right for the person who has possession of the *Lot* to retain possession of it.

"risk": the possibility that a *Lot* may be lost, damaged, destroyed, stolen, or deteriorate in condition or value.

"title": the legal and equitable right to the ownership of a *Lot*.

"tort": a legal wrong done to someone to whom the wrong doer has a duty of care.

SALE OF GOODS ACT 1979

The following is an extract from the Sale of Goods Act 1979:

"Section 12 Implied terms about title, etc

- (1) In a contract of sale, other than one to which subsection (3) below applies, there is an implied term on the part of the seller that in the case of a sale he has a right to sell the goods, and in the case of an agreement to sell he will have such a right at the time when the property is to pass.
- (2) In a contract of sale, other than one to which subsection (3) below applies, there is also an implied term that-
 - (a) the goods are free, and will remain free until the time when the property is to pass, from any charge or encumbrance not disclosed or known to the buyer before the contract is made, and
 - (b) the buyer will enjoy quiet possession of the goods except in so far as it may be disturbed by the owner or other person entitled to the benefit of any charge or encumbrance so disclosed or known.
- (3) This subsection applies to a contract of sale in the case of which there appears from the contract or is to be inferred from its circumstances an intention that the seller should transfer only such title as he or a third person may have.
- (4) In a contract to which subsection (3) above applies there is an implied term that all charges or encumbrances known to the seller and not known to the buyer have been disclosed to the buyer before the contract is made.
- (5) In a contract to which subsection (3) above applies there is also an implied term that none of the following will disturb the buyer's quiet possession of the goods, namely:
 - (a) the seller;
 - (b) in a case where the parties to the contract intend that the seller should transfer only such title as a third person may have, that person;
 - (c) anyone claiming through or under the seller or that third person otherwise than under a charge or encumbrance disclosed or known to the buyer before the contract is made.
- (5A) As regards England and Wales and Northern Ireland, the term implied by subsection (1) above is a condition and the terms implied by subsections (2), (4) and (5) above are warranties."

Bonhams Specialist Departments

To e-mail any of the below use the first name dot second name @bonhams.com eg. charles.obrien@bonhams.com

19th Century Paintings

UK
Charles O' Brien
+44 20 7468 8360
U.S.A
Madalina Lazen
+1 212 644 9108

20th Century British Art

Matthew Bradbury
+44 20 7468 8295

Aboriginal Art

Francesca Cavazzini
+61 2 8412 2222

African, Oceanic & Pre-Columbian Art

U.S.A
Fredric Backlar
+1 323 436 5416

American Paintings

Liz Goodridge
+1 917 206 1621

Antiquities

Francesca Hickin
+44 20 7468 8226

Antique Arms & Armour

UK
David Williams
+44 20 7393 3807
U.S.A
Paul Carella
+1 415 503 3360

Art Collections, Estates & Valuations

Harvey Cammell
+44 (0) 20 7468 8340

Art Nouveau & Decorative Art & Design

UK
Mark Oliver
+44 20 7393 3856
U.S.A
Benjamin Walker
+1 212 710 1306
Dan Tolson
+1 917 206 1611

Australian Art

Merryn Schriever
+61 2 8412 2222
Alex Clark
+61 3 8640 4088

Australian Colonial Furniture and Australiana

+61 2 8412 2222

Books, Maps & Manuscripts

UK
Matthew Haley
+44 20 7393 3817
U.S.A
Catherine Williamson
+1 323 436 5442

British & European Glass

UK
John Sandon
+44 20 7468 8244
U.S.A.
Suzy Pai
+1 415 503 3343

British Ceramics

UK
John Sandon
+44 20 7468 8244

California & American Paintings

Scot Levitt
+1 323 436 5425

Carpets

UK
carpets@bonhams.com
U.S.A.
+1 415 503 3392

Chinese & Asian Art

UK
Asaph Hyman
+44 20 7468 5888
U.S.A
Dessa Goddard
+1 415 503 3333
HONG KONG
Xibo Wang
+852 3607 0010
AUSTRALIA
Yvett Klein
+61 2 8412 2222

Clocks

UK
James Stratton
+44 20 7468 8364
U.S.A
Jonathan Snellenburg
+1 212 461 6530

Coins & Medals

UK
John Millensted
+44 20 7393 3914
U.S.A
Paul Song
+1 323 436 5455

Contemporary Art

UK
Ralph Taylor
+44 20 7447 7403
U.S.A
Jeremy Goldsmith
+1 917 206 1656

Entertainment Memorabilia

UK
Katherine Schofield
+44 20 7393 3871
U.S.A
Catherine Williamson
+1 323 436 5442

European Ceramics

UK
Sebastian Kuhn
+44 20 7468 8384
U.S.A
+1 415 503 3326

Furniture

UK
Thomas Moore
+44 20 8963 2816
U.S.A
Andrew Jones
+1 415 503 3413

European Sculptures & Works of Art

UK
Michael Lake
+44 20 8963 6813

Greek Art

Anastasia Orfanidou
+44 20 7468 8356

Golf Sporting Memorabilia

Kevin McGimpsey
+44 131 240 2296

Irish Art

Penny Day
+44 20 7468 8366

Impressionist & Modern Art

UK
India Phillips
+44 20 7468 8328
U.S.A
Nathania Nisonson
+1 917 206 1617

Indian, Himalayan & Southeast Asian Art

H.K.
Edward Wilkinson
+852 2918 4321
U.S.A
Mark Rasmussen
+1 917 206 1688

Islamic & Indian Art

Oliver White
+44 20 7468 8303

Japanese Art

UK
Suzannah Yip
+44 20 7468 8368
U.S.A
Jeff Olson
+1 212 461 6516

Jewellery

UK
Jean Ghika
+44 20 7468 8282
U.S.A
Caroline Morrissey
+1 212 644 9046
HONG KONG
Graeme Thompson
+852 3607 0006

Marine Art

UK
Veronique Scorer
+44 20 7393 3962

Mechanical Music

Jon Baddeley
+44 20 7393 3872

Modern, Contemporary & Latin American Art

U.S.A
Alexis Chompaisal
+1 323 436 5469

Modern & Contemporary Middle Eastern Art

Nima Sagharchi
+44 20 7468 8342

Modern & Contemporary South Asian Art

Tahmina Ghaffar
+44 207 468 8382

Modern Design

Gareth Williams
+44 20 7468 5879

Motor Cars

UK
Tim Schofield
+44 20 7468 5804
U.S.A
Mark Osborne
+1 415 503 3353
EUROPE
Philip Kantor
+32 476 879 471

Automobilia

UK
Toby Wilson
+44 8700 273 619
Adrian Pipiros
+44 8700 273621

Motorcycles

Ben Walker
+44 8700 273616

Native American Art

Ingmars Lindbergs
+1 415 503 3393

Natural History

U.S.A
Claudia Florian
+1 323 436 5437

Old Master Pictures

UK
Andrew McKenzie
+44 20 7468 8261
U.S.A
Mark Fisher
+1 323 436 5488

Orientalist Art

Charles O'Brien
+44 20 7468 8360

Photography

U.S.A
Laura Paterson
+1 917 206 1653

Prints and Multiples

UK
Lucia Tro Santafe
+44 20 7468 8262
U.S.A
Morisa Rosenberg
+1 323 447 9374

Russian Art

UK
Daria Chernenko
+44 20 7468 8334
U.S.A
Yelena Harbick
+1 212 644 9136

Scientific Instruments

Jon Baddeley
+44 20 7393 3872
U.S.A.
Jonathan Snellenburg
+1 212 461 6530

Scottish Pictures

Chris Brickley
+44 131 240 2297

Silver & Gold Boxes

UK
Ellis Finch
+44 20 7393 3973
U.S.A
Aileen Ward
+1 323 436 5463

South African Art

Giles Peppiatt
+44 20 7468 8355

Sporting Guns

Patrick Hawes
+44 20 7393 3815

Travel Pictures

Veronique Scorer
+44 20 7393 3962

Urban Art

Gareth Williams
+44 20 7468 5879

Watches & Wristwatches

UK
Jonathan Darracott
+44 20 7447 7412
U.S.A.
Jonathan Snellenburg
+1 212 461 6530
H.K.
Tim Bourne
+852 3607 0021

Whisky

UK
Martin Green
+44 (0) 131 225 2266
HONG KONG
Daniel Lam
+852 2918 4321

Wine

UK
Richard Harvey
+44 (0) 20 7468 5811
U.S.A
Erin McGrath
+1 415 503 3319
HONG KONG
Daniel Lam
+852 2918 4321

UNITED KINGDOM

London
101 New Bond Street ●
London W1S 1SR
+44 20 7447 7447
+44 20 7447 7400 fax

Montpelier Street ●
London SW7 1HH
+44 20 7393 3900
+44 20 7393 3905 fax

South East England

Guildford
Millmead,
Guildford,
Surrey GU2 4BE
+44 1483 504 030
+44 1483 450 205 fax

Isle of Wight
+44 1273 220 000

Representative:
Brighton & Hove
Tim Squire-Sanders
+44 1273 220 000

West Sussex
+44 (0) 1273 220 000

South West England

Bath
Queen Square House
Charlotte Street
Bath BA1 2LL
+44 1225 788 988
+44 1225 446 675 fax

Cornwall – Truro
36 Lemon Street
Truro
Cornwall
TR1 2NR
+44 1872 250 170
+44 1872 250 179 fax

Exeter
The Lodge
Southernhay West Exeter,
Devon
EX1 1JG
+44 1392 425 264
+44 1392 494 561 fax

Tetbury
Eight Bells House
14 Church Street
Tetbury
Gloucestershire
GL8 8JG
+44 1666 502 200
+44 1666 505 107 fax

Representatives:
Dorset
Bill Allan
+44 1935 815 271

East Anglia and Bury St. Edmunds
Michael Steel
+44 1284 716 190

Norfolk
The Market Place
Reepham
Norfolk NR10 4JJ
+44 1603 871 443
+44 1603 872 973 fax

Midlands

Knowle
The Old House
Station Road
Knowle, Solihull
West Midlands
B93 0HT
+44 1564 776 151
+44 1564 778 069 fax

Oxford
Banbury Road
Shipton on Cherwell
Kidlington OX5 1JH
+44 1865 853 640
+44 1865 372 722 fax

Yorkshire & North East England

Leeds
The West Wing
Bowcliffe Hall
Bramham
Leeds
LS23 6LP
+44 113 234 5755
+44 113 244 3910 fax

North West England

Chester
2 St Johns Court,
Vicars Lane,
Chester,
CH1 1QE
+44 1244 313 936
+44 1244 340 028 fax

Manchester
The Stables
213 Ashley Road
Hale WA15 9TB
+44 161 927 3822
+44 161 927 3824 fax

Channel Islands

Jersey
La Chasse
La Rue de la Vallee
St Mary
Jersey JE3 3DL
+44 1534 722 441
+44 1534 759 354 fax

Representative:
Guernsey
+44 1481 722 448

Scotland

Edinburgh ●
22 Queen Street
Edinburgh
EH2 1JX
+44 131 225 2266
+44 131 220 2547 fax

Bonhams West of Scotland
Kirkhill House
Broom Road East
Newton Mearns
Glasgow
G77 5LL
+44 141 223 8866

Wales

Representatives:
Cardiff
Jeff Muse
+44 2920 727 980

EUROPE

Austria
Thomas Kamm
+49 (0) 89 2420 5812
austria@bonhams.com

Belgium
Boulevard
Saint-Michel 101
1040 Brussels
+32 (0) 2 736 5076
belgium@bonhams.com

France
4 rue de la Paix
75002 Paris
+33 (0) 1 42 61 10 10
paris@bonhams.com

Germany - Cologne
Katharina Schmid
+49 (0) 221 9865 3419
+49 (0) 157 9234 6717
cologne@bonhams.com

Germany - Munich
Maximilianstrasse 52
80538 Munich
+49 (0) 89 2420 5812
munich@bonhams.com

Germany - Stuttgart
Neue Brücke 2
New Bridge Offices
70173 Stuttgart
+49 (0) 711 2195 2640
+49 (0) 157 9234 6717
stuttgart@bonhams.com

Greece
7 Neofytou Vamva Street
Athens 10674
+30 (0) 210 3636 404
athens@bonhams.com

Ireland
31 Molesworth Street
Dublin 2
+353 (0) 1 602 0990
ireland@bonhams.com

Italy - Milan
Via Boccaccio 22
20123 Milano
+39 0 2 4953 9020
milan@bonhams.com

Italy - Rome
Via Sicilia 50
00187 Roma
+39 06 485 900
rome@bonhams.com

The Netherlands
De Lairessestraat 154
1075 HL Amsterdam
+31 (0) 20 67 09 701
amsterdam@bonhams.com

Portugal
Rua Bartolomeu Dias
nº160. 1º
Belem
1400-031 Lisbon
+351 218 293 291
portugal@bonhams.com

Spain - Barcelona
Teresa Ybarra
+34 930 156 686
+34 680 347 606
barcelona@bonhams.com

Spain - Madrid
Núñez de Balboa no 4-1C
28001 Madrid
+34 915 78 17 27
madrid@bonhams.com

Sweden
Ingrid Bjäringer
+46 (0)709 79 90 07
sweden@bonhams.com

Switzerland - Geneva
Rue Etienne-Dumont 10
1204 Geneva
+41 (0) 22 300 3160
geneva@bonhams.com

Switzerland - Zurich
Andrea Bodmer
Dreikönigstrasse 31a
8002 Zürich
+41 44 281 9535
zurich@bonhams.com

MIDDLE EAST

Israel
Joslyne Halibard
+972 (0)54 553 5337
joslyne.halibard@
bonhams.com

NORTH AMERICA

USA

San Francisco ●
220 San Bruno Avenue
San Francisco
CA 94103
+1 (415) 861 7500
+1 (415) 861 8951 fax

Los Angeles ●
7601 W. Sunset Boulevard
Los Angeles
CA 90046
+1 (323) 850 7500
+1 (323) 850 6090 fax

New York ●
580 Madison Avenue
New York, NY
10022
+1 (212) 644 9001
+1 (212) 644 9007 fax

Representatives:
Arizona
Terri Adrian-Hardy
+1 (602) 859 1843
arizona@bonhams.com

California
Central Valley
David Daniel
+1 (916) 364 1645
sacramento@bonhams.com

California
Palm Springs
Brooke Sivo
+1 (760) 350 4255
palmsprings@bonhams.com

California
San Diego
Brooke Sivo
+1 (760) 567 1744
sandiego@bonhams.com

Colorado
Lance Vigil
+1 (720) 355 3737
colorado@bonhams.com

Florida
April Matteini
+1 (305) 978 2459
florida@bonhams.com

Georgia
Mary Moore Bethea
+1 (404) 842 1500
georgia@bonhams.com

Illinois
Ricki Blumberg Harris
+1 (773) 267 3300
chicago@bonhams.com

Massachusetts
Amy Corcoran
+1 (617) 742 0909
boston@bonhams.com

Nevada
David Daniel
+1 (775) 831 0330
nevada@bonhams.com

New Mexico
Terri Adrian-Hardy
+1 (602) 859 1843
newmexico@bonhams.com

Oregon
Sheryl Acheson
+1 (971) 727 7797
oregon@bonhams.com

Texas
Amy Lawch
+1 (713) 621 5988
texas@bonhams.com

Virginia
Gertraud Hechl
+1 (202) 422 2733
virginia@bonhams.com

Washington
Heather O'Mahony
+1 (206) 566 3913
seattle@bonhams.com

Washington DC
Mid-Atlantic Region
Gertraud Hechl
+1 (202) 422 2733
washingtonDC
@bonhams.com

CANADA

Toronto, Ontario ●
Kristin Kearney
340 King St East
2nd Floor, Office 213
Toronto ON
M5A 1K8
+1 (416) 462 9004
info.ca@bonhams.com

Montreal, Quebec
David Kelsey
+1 (514) 894 1138
info.ca@bonhams.com

SOUTH AMERICA

Brazil
+55 11 3031 4444
+55 11 3031 4444 fax

ASIA

Hong Kong ●
Suite 2001
One Pacific Place
88 Queensway
Admiralty
Hong Kong
+852 2918 4321
+852 2918 4320 fax
hongkong@bonhams.com

Beijing
Jessica Zhang
Suite 511
Chang An Club
10 East Chang An Avenue
Beijing 100006
+86(0) 10 6528 0922
+86(0) 10 6528 0933 fax
beijing@bonhams.com

Singapore
Bernadette Rankine
11th Floor, Wisma Atria
435 Orchard Road
Singapore 238877
+65 (0) 6701 8038
+65 (0) 6701 8001 fax
bernadette.rankine@
bonhams.com

Taiwan
37th Floor, Taipei 101 Tower
No. 7 Xinyi Road, Section 5
Taipei, 100
+886 2 8758 2898
+886 2 8758 2897 fax
taiwan@bonhams.com

AUSTRALIA

Sydney
97-99 Queen Street,
Woollahra, NSW 2025
Australia
+61 (0) 2 8412 2222
+61 (0) 2 9475 4110 fax
info.aus@bonhams.com

Melbourne
Como House
Como Avenue
South Yarra
Melbourne VIC 3141
Australia
+61 (0) 3 8640 4088
+61 (0) 2 9475 4110 fax
info.aus@bonhams.com

AFRICA

Nigeria
Neil Coventry
+234 (0)8110 033 792
+27 (0)7611 20171
neil.coventry@bonhams.com

South Africa - Johannesburg
Penny Culverwell
+27 (0)71 342 2670
penny.culverwell@bonhams.com

Registration and Bidding Form

(Attendee / Absentee / Online / Telephone Bidding)

Please circle your bidding method above.

<input type="checkbox"/>	<input type="checkbox"/>	<input type="checkbox"/>	<input type="checkbox"/>
--------------------------	--------------------------	--------------------------	--------------------------

Paddle number (for office use only)

This sale will be conducted in accordance with Bonhams' Conditions of Sale and bidding and buying at the Sale will be regulated by these Conditions. You should read the Conditions in conjunction with the Sale Information relating to this Sale which sets out the charges payable by you on the purchases you make and other terms relating to bidding and buying at the Sale. You should ask any questions you have about the Conditions before signing this form. These Conditions also contain certain undertakings by bidders and buyers and limit Bonhams' liability to bidders and buyers.

Data protection – use of your information

Where we obtain any personal information about you, we shall only use it in accordance with the terms of our Privacy Policy (subject to any additional specific consent(s) you may have given at the time your information was disclosed). A copy of our Privacy Policy can be found on our website (www.bonhams.com) or requested by post from Customer Services Department, 101 New Bond Street, London W1S 1SR United Kingdom or by e-mail from info@bonhams.com.

Notice to Bidders.

Clients are requested to provide photographic proof of ID - passport, driving licence, ID card, together with proof of address - utility bill, bank or credit card statement etc. Corporate clients should also provide a copy of their articles of association / company registration documents, together with a letter authorising the individual to bid on the company's behalf. Failure to provide this may result in your bids not being processed. For higher value lots you may also be asked to provide a bank reference.

If successful

I will collect the purchases myself ☐

Please contact me with a shipping quote (if applicable) ☐

Sale title: Jewellery		Sale date: 11 July 2018													
Sale no. 24570		Sale venue: Knightsbridge													
<p>If you are not attending the sale in person, please provide details of the Lots on which you wish to bid at least 24 hours prior to the sale. Bids will be rounded down to the nearest increment. Please refer to the Notice to Bidders in the catalogue for further information relating to Bonhams executing telephone, online or absentee bids on your behalf. Bonhams will endeavour to execute these bids on your behalf but will not be liable for any errors or failing to execute bids.</p> <p>General Bid Increments:</p> <table><tr><td>£10 - 200by 10s</td><td>£10,000 - 20,000by 1,000s</td></tr><tr><td>£200 - 500by 20 / 50 / 80s</td><td>£20,000 - 50,000by 2,000 / 5,000 / 8,000s</td></tr><tr><td>£500 - 1,000by 50s</td><td>£50,000 - 100,000by 5,000s</td></tr><tr><td>£1,000 - 2,000by 100s</td><td>£100,000 - 200,000by 10,000s</td></tr><tr><td>£2,000 - 5,000by 200 / 500 / 800s</td><td>above £200,000at the auctioneer's discretion</td></tr><tr><td>£5,000 - 10,000by 500s</td><td></td></tr></table> <p>The auctioneer has discretion to split any bid at any time.</p>				£10 - 200by 10s	£10,000 - 20,000by 1,000s	£200 - 500by 20 / 50 / 80s	£20,000 - 50,000by 2,000 / 5,000 / 8,000s	£500 - 1,000by 50s	£50,000 - 100,000by 5,000s	£1,000 - 2,000by 100s	£100,000 - 200,000by 10,000s	£2,000 - 5,000by 200 / 500 / 800s	above £200,000at the auctioneer's discretion	£5,000 - 10,000by 500s	
£10 - 200by 10s	£10,000 - 20,000by 1,000s														
£200 - 500by 20 / 50 / 80s	£20,000 - 50,000by 2,000 / 5,000 / 8,000s														
£500 - 1,000by 50s	£50,000 - 100,000by 5,000s														
£1,000 - 2,000by 100s	£100,000 - 200,000by 10,000s														
£2,000 - 5,000by 200 / 500 / 800s	above £200,000at the auctioneer's discretion														
£5,000 - 10,000by 500s															
Customer Number		Title													
First Name		Last Name													
Company name (to be invoiced if applicable)															
Address															
City		County / State													
Post / Zip code		Country													
Telephone mobile		Telephone daytime													
Telephone evening		Fax													
Preferred number(s) in order for Telephone Bidding (inc. country code)															
E-mail (in capitals)															
By providing your email address above, you authorise Bonhams to send to this address information relating to Sales, marketing material and news concerning Bonhams. Bonhams does not sell or trade email addresses.															
I am registering to bid as a private buyer <input type="checkbox"/>		I am registering to bid as a trade buyer <input type="checkbox"/>													
If registered for VAT in the EU please enter your registration here: □□ / □□□ - □□□□ - □□		Please tick if you have registered with us before <input type="checkbox"/>													

Please note that all telephone calls are recorded.

Telephone or Absentee (T / A)	Lot no.	Brief description	MAX bid in GBP (excluding premium & VAT)	Covering bid ★

FOR WINE SALES ONLY	
Please leave lots "available under bond" in bond <input type="checkbox"/>	Please include delivery charges (minimum charge of £20 + VAT) <input type="checkbox"/>

BY SIGNING THIS FORM YOU AGREE THAT YOU HAVE SEEN THE CATALOGUE AND HAVE READ AND UNDERSTOOD OUR CONDITIONS OF SALE AND WISH TO BE BOUND BY THEM, AND AGREE TO PAY THE BUYER'S PREMIUM, VAT AND ANY OTHER CHARGES MENTIONED IN THE NOTICE TO BIDDERS. THIS AFFECTS YOUR LEGAL RIGHTS.

Your signature:

Date:

★ Covering Bid: A maximum bid (exclusive of Buyers Premium and VAT) to be executed by Bonhams only if we are unable to contact you by telephone, or should the connection be lost during bidding.

NB. Payment will only be accepted from an account in the same name as shown on the invoice and Auction Registration form.

Please email or fax the completed Auction Registration form and requested information to:

Bonhams, Customer Services, 101 New Bond Street, London, W1S 1SR. Tel: +44 (0) 20 7447 7447 Fax: +44 (0) 20 7447 7401, bids@bonhams.com

Bonhams 1793 Limited. Montpelier Street, London SW7 1HH. Incorporated in England. Company Number 4326560.

UK/01/18

Bonhams

Bonhams

Montpelier Street
Knightsbridge
London
SW7 1HH

+44 (0) 20 7393 3900
+44 (0) 20 7393 3905 fax

