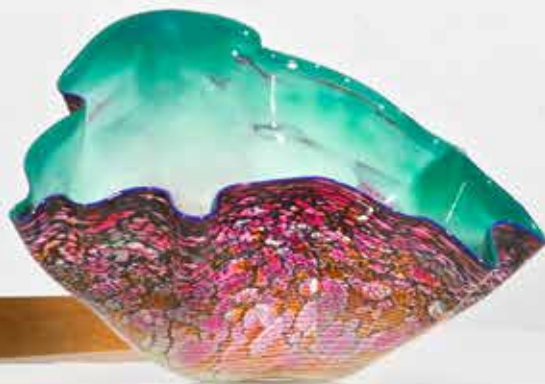


**MODERN DECORATIVE ART
+ DESIGN**

Tuesday April 17, 2018



Bonhams







MODERN DECORATIVE ART + DESIGN

Tuesday April 17, 2018 at 1pm
Los Angeles

BONHAMS

7601 W. Sunset Boulevard
Los Angeles CA 90046
bonhams.com

PREVIEW

Los Angeles

Friday April 13, 10am to 5pm
Saturday April 14, 12pm to 5pm
Sunday April 15, 12pm to 5pm
Monday April 16, 10am to 5pm

SALE NUMBER: 24769

CATALOG: \$35

LOT SYMBOLS

W - Oversized lots
Y - CITES

BIDS

+1 (323) 850 7500
+1 (323) 850 6090 fax

To bid via the internet please visit
www.bonhams.com/24769

Please note that telephone bids must be submitted no later than 4pm on the day prior to the auction. New bidders must also provide proof of identity and address when submitting bids. Telephone bidding is only available for lots with a low estimate in excess of \$1000.

Please contact client services with any bidding inquiries.

Please see pages 182 to 185 for bidder information including Conditions of Sale, after-sale collection and shipment.

INQUIRIES

Los Angeles

Jason Stein
Director
+1 (323) 436 5466
jason.stein@bonhams.com

Angela Past
Senior Specialist
+1 (323) 436 5422
angela.past@bonhams.com

Katherine Miller
Business Administrator
+1 (323) 436 5445
katherine.miller@bonhams.com

New York

Benjamin Walker
Head of Department
+1 (212) 710 1306
+1 (212) 644 9007 fax
benjamin.walker@bonhams.com

Dan Tolson
Director
+1 (917) 206 1611
+1 (212) 644 9007 fax
dan.tolson@bonhams.com

Misha Sylver
Administrator
+1 (917) 206 1614
+1 (212) 644 9007 fax
misha.sylver@bonhams.com

ILLUSTRATIONS

Front Cover: Lot 236
Back Cover: Lot 78
Inside front left cover:
Lot 124, 198, 199, 301
Inside back cover:
Lot 239

Bonhams

220 San Bruno Avenue
San Francisco, California 94103
© 2018, Bonhams & Butterfields
Auctioneers Corp.; All rights reserved.
Bond No. 57BSBGL0808

1

JUGENDSTIL

Nautilus Shell Dolphin Lamp
circa 1900
patinated bronze and nautilus shell
height 13 1/2in (34.2cm)

\$1,200 - 1,800



2

LOUIS-PHILIPPE HÉBERT(1850-1917)

La Fée Nicotine

early 20th century

patinated and gilt bronze, signed 'P. Hebert 1902'

height 17 1/2in (45cm); width 10in (26cm); depth 4in (10cm)

\$4,000 - 6,000



3

ENGLISH

Pedestal Cup and Footed Bowl

circa 1900

William Neale & Sons, Chester, 1904, William

Hutton & Sons, Ltd., London, 1901, sterling

silver and iridescent glass

height of cup 8 1/8in (20.8cm); height of bowl

3 3/4in (9.5cm); diameter 4 7/8in (12.3cm)

\$1,000 - 1,500

4

JUGENDSTIL

Vase

circa 1900

silver overlaid iridescent glass

height 5 5/8in (14.4cm)

\$1,000 - 1,500



3



3



4

5

CLEMENT MASSIER (1845-1917)

Cabinet Vase

circa 1900

silver overlaid lustre glazed earthenware, signed 'CM', silver with obscured hallmark, together with, two Art Nouveau silver overlaid iridescent glass cabinet vases, impressed 'STERLING'

heights 4 1/2in (11.5cm), 3 1/2in (8.8cm); 2 3/4in (7cm) (3)

\$1,200 - 1,800

6

JUGENDSTIL

A Twin-Handled Vase

circa 1900

pewter overlaid iridescent glass, pewter impressed '4530 F'

height 10 3/8in (26.2cm)

\$1,000 - 1,500



5



5



6



5

7

**ATTRIBUTED TO OTTO PRUTSCHER
(1880-1949)**

Four Goblets

for Meyr's Neffe, designed circa 1904, these

created later

cobalt blue cased glass cut to clear

height 5 1/2in (14cm)

\$1,000 - 1,500



8

SECESSIONIST

Vase

circa 1904

silver overlaid iridescent glass with enamel 'jeweling', together with, a similar copper overlaid vase

heights 10 1/2in (26.6cm) and 10 1/4in (26cm) (2)

\$1,500 - 2,000

9

SECESSIONIST

Two Vases

circa 1904

silver overlaid purple glass

heights 4 7/8in (12.5cm) and 7 1/8in (18cm)

\$1,500 - 2,000



8



8



9



9

10

DIRK VAN ERP (1860-1933)

Table Lamp

post 1915

hammered copper and mica, base with impressed broken box over 'SAN FRANCISCO'

height 22in (56CM); diameter 16 1/2in (42cm)

\$6,000 - 9,000

11

DIRK VAN ERP (1860-1933)

Bean Pot Lamp

post 1915

hammered copper and mica, base impressed with broken box over 'SAN FRANCISCO'

height 11 3/4inches (30cm); diameter 11in (28cm)

\$3,000 - 5,000



10



11

12

JOSEPH HEINRICHS

Tobacco Jar

1904

for Shreve & Co., copper, silver, and stone arrowheads,
impressed 'SHREVE & CO COPPER AND SILVER',
engraved inscription 'From John A. MacKerron and
William P. Van Brunt to The Other Indian Horace V. Scott
Oct. 27, 04'

height 7 1/2in (19cm); width 5 3/4in (14.5cm)

\$6,000 - 9,000



13

TIFFANY STUDIOS (1899-1919)

Zodiac Pattern Desk Set

1899-1919

patinated bronze

nine piece comprising a stationery stand (1009), a letter opener (1095), a memo pad holder (1093), a paperweight (934), a matchbox holder, a stamp box (802), blotter corners (996), a utility box (811), and an inkwell (1072), together with, a Chinese pattern magnifying glass, each impressed 'TIFFANY STUDIOS NEW YORK' and numbers

heights 5/8in to 6 1/8in (1cm to 15cm); widths 3 11/16in to 9 1/2in (9cm to 24cm); depths 2 1/4in to 6 1/2in (5cm to 16cm) (10)

\$2,500 - 3,500

Provenance

Private Collection, California



13

14

TIFFANY STUDIOS (1899-1919)

Zodiac Pattern Picture Frame

1899-1918

patinated bronze, impressed 'TIFFANY
STUDIOS 921'

height 11in (28cm); width 9in (23cm)

\$1,000 - 1,500

Provenance

Private Collection, California



15

TIFFANY STUDIOS (1899-1919)

Feather Vase

early 20th century

decorated Favrite glass, signed '134T L.C. Tiffany-Favrile'

height 8 5/8in (21.8cm)

\$1,000 - 1,500



16

TIFFANY STUDIOS (1899-1919)

Harp Table Lamp

1899-1919

Favrile glass and patinated bronze, the base
impressed 'TIFFANY STUDIOS NEW YORK 419'
*height of base 13in (33cm); diameter of shade 7
1/4in (18.2cm)*

\$2,000 - 3,000

Provenance

Private Collection, California



17

TIFFANY STUDIOS (1899-1919)

Part Stemware Service

early 20th century

pastel glass, comprising eight large goblets,
seven medium goblets, and six small goblets,
each signed 'L.C. Tiffany-Favrile'

heights 8 3/8in (21.2cm); 7 1/2in (19cm); 6
3/8in (16.3) (21)

\$5,000 - 8,000



18

TIFFANY STUDIOS (1899-1919)

Tel-El-Amarna Vase

circa 1916

Favrile glass, engraved '901K L.C. Tiffany-Favrile'
height 5 1/2in (14cm); diameter 5 3/4in (14.5cm)

\$6,000 - 8,000

Provenance

Private Collection





19^W

MARTHA VAN COPPENOLLE (1912-2004)

Unique Modernist Carpet

circa 1935

hand-knotted wool; together with certificate of authenticity

from the son of Martha van Coppenolle

90 1/2in (230cm) x 61in (155cm)

\$4,000 - 6,000

Provenance

Martha van Coppenolle, circa 1935

Mr and Mrs Antony de Meester, Antwerp

20^W

PAUL T. FRANKL (1886-1958)

Skyscraper Bookcase

circa 1926

produced by Frankl Galleries, lacquered wood

height 89in (226cm); width 42in (107cm); depth 16in

(41cm)

\$20,000 - 30,000

Provenance

Private collection, Los Angeles, California

Literature

Paul T. Frankl, 'New Dimensions', New York, 1928, p.

23-24

Christopher Long, 'Paul T. Frankl and Modern American

Design', New Haven, 2007, p. 66-71, 74 and front

cover for a discussion and illustrations of Frankl's

skyscraper pieces



20



21

21
JULIUS SHULMAN (1910-2009)
 Untitled (Terrace Theater)
 1942
 printed later, gelatin silver print
 signed on the verso
sheet 16 x 20in (41 x 51cm)

\$7,000 - 9,000



22

22
JULIUS SHULMAN (1910-2009)
 Academy Theater, Los Angeles, California
 1939
 vintage gelatin silver print
sight 4 1/2 x 3 3/4in (11.5 x 9.5cm)

\$10,000 - 15,000

Literature

Julius Shulman, 'Architecture and its Photography', Taschen, 1999, p. 37 for an illustration of S. Charles Lee's Academy Theater photographed by Shulman

23

JULIUS SHULMAN (1910-2009)

Shangri-La Apartments, Santa Monica, California

1941

vintage gelatin silver print
signed and dated '1941' on the recto
sheet 11 x 13 3/4in (28 x 35cm)

\$8,000 - 12,000

Literature

Julius Shulman, 'Architecture and its Photography', Taschen, 1999, p. 34-35 for illustrations of Shulman photographs of the Shangri-La apartments



23

24

JULIUS SHULMAN (1910-2009)

May Co. Building, Los Angeles, California

1948

vintage gelatin silver print
signed and dated lower right
sheet 23 3/4 x 29 1/2in (60 x 75cm)

\$8,000 - 12,000



24



25

25^W

FRENCH

Twelve Light Chandelier

circa 1940

brass, frosted and clear glass

height 28in (71cm); width 42in (107cm); depth 12in (31cm)

\$1,000 - 1,500

26^W

ATTRIBUTED TO IVAN DA SILVA BRUHNS (1880-1980)

Carpet

1938

for André Arbus, manufactured by Savigny, hand-knotted wool

110in (279cm) x 150in (381cm)

\$7,000 - 9,000

Literature

'Art et Décoration' May 1938, front cover and pages 149, 151, 152 and 153

'Mobilier et Décoration' N°3 March 1948, p.36

Yvonne Brunhammer, 'André ARBUS', 1996, p. 154-155



27

MAURICE PROST (1894 - 1967)

Panther and Serpent

circa 1930

patinated bronze, marble base, signed 'M. PROST' on base

height 11 7/8in (30cm); length 19 1/2in (49.5cm); depth 4in (10cm)

\$5,000 - 8,000

Provenance

Private Collection, Florida

Reputedly fewer than 10 examples of the present model were cast



28

HARRIET WHITNEY FRISHMUTH (1880-1980)

Meteor

1923-1924

Gorham Co., patinated bronze, impressed 'HARRIET
W. FRISHMUTH / © 1923 DESIGN PATENT PENDING'
around base, on later marble base
height of bronze 4 3/8in (11cm); width 8 3/4in (22.3cm)

\$10,000 - 15,000

Provenance

Auto Salvage Yard, Providence, R.I.

Private Collection, Pawtucket, R.I. (acquired from above)

Private Collection, Atlanta, GA

Literature

Janis Conner, 'Captured Motion: The Sculpture of Harriet
Whitney Frishmuth. A Catalogue of Works', p.169, 245
(illustrated)

Designed as a hood ornament, this work was cast in a
small edition of 13; it was later adapted as a paperweight



29

FRENCH

Assorted Group of 75 Wallpaper and Textile Designs

1875-1975

gouache on paper

smallest 15 x 17 3/4in (38cm x 45cm); largest 23 1/8 x 31 3/8in

\$6,000 - 8,000

Provenance

ESSEF Balagny sur Therain, France

Beauvais Auction House, France, March & September 2007





30

FRENCH

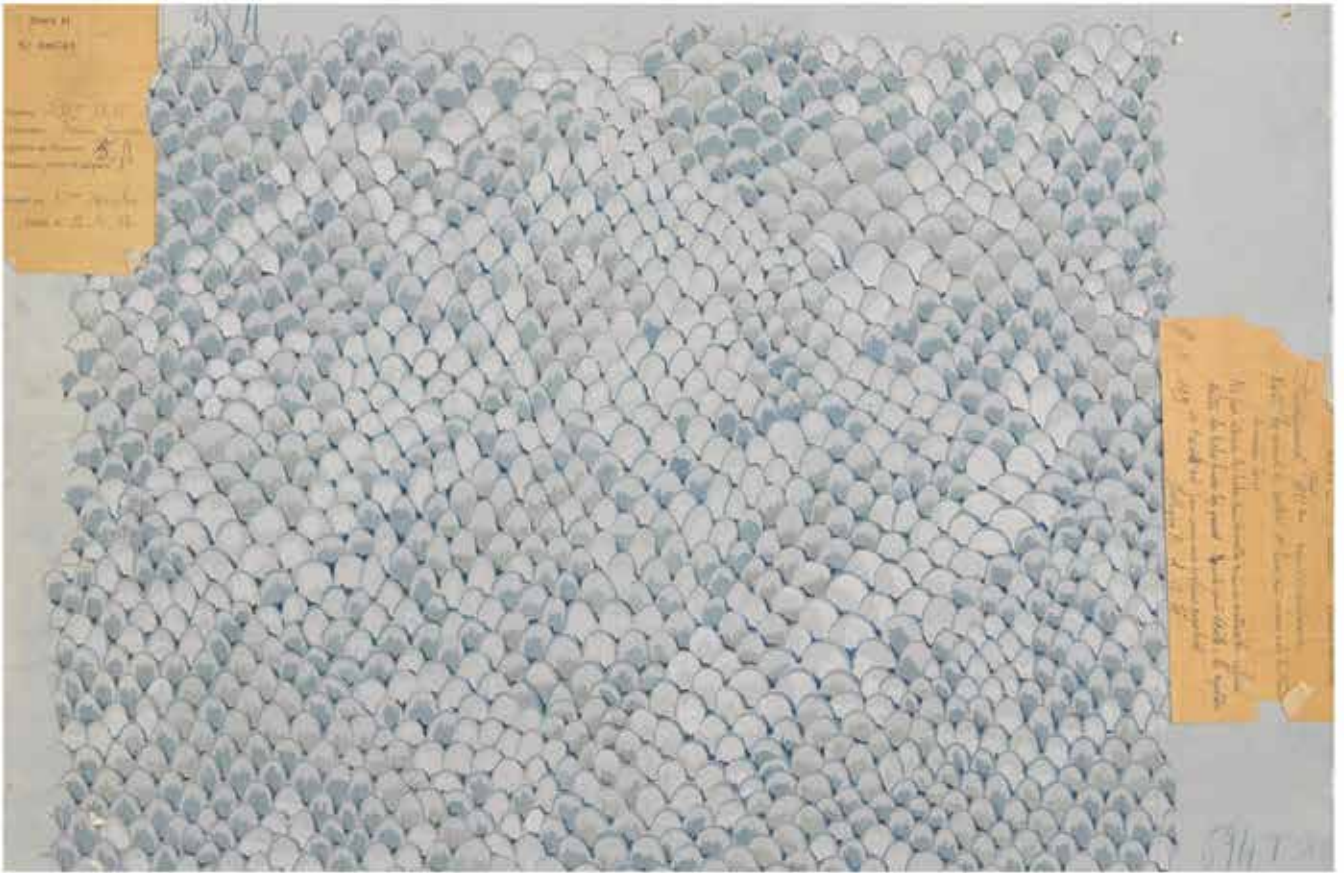
Assorted Group of 250 Wallpaper and Textile Designs
1875-1975
gouache on paper
varying measurements; folio size 29 x 39in (74 x 100cm)

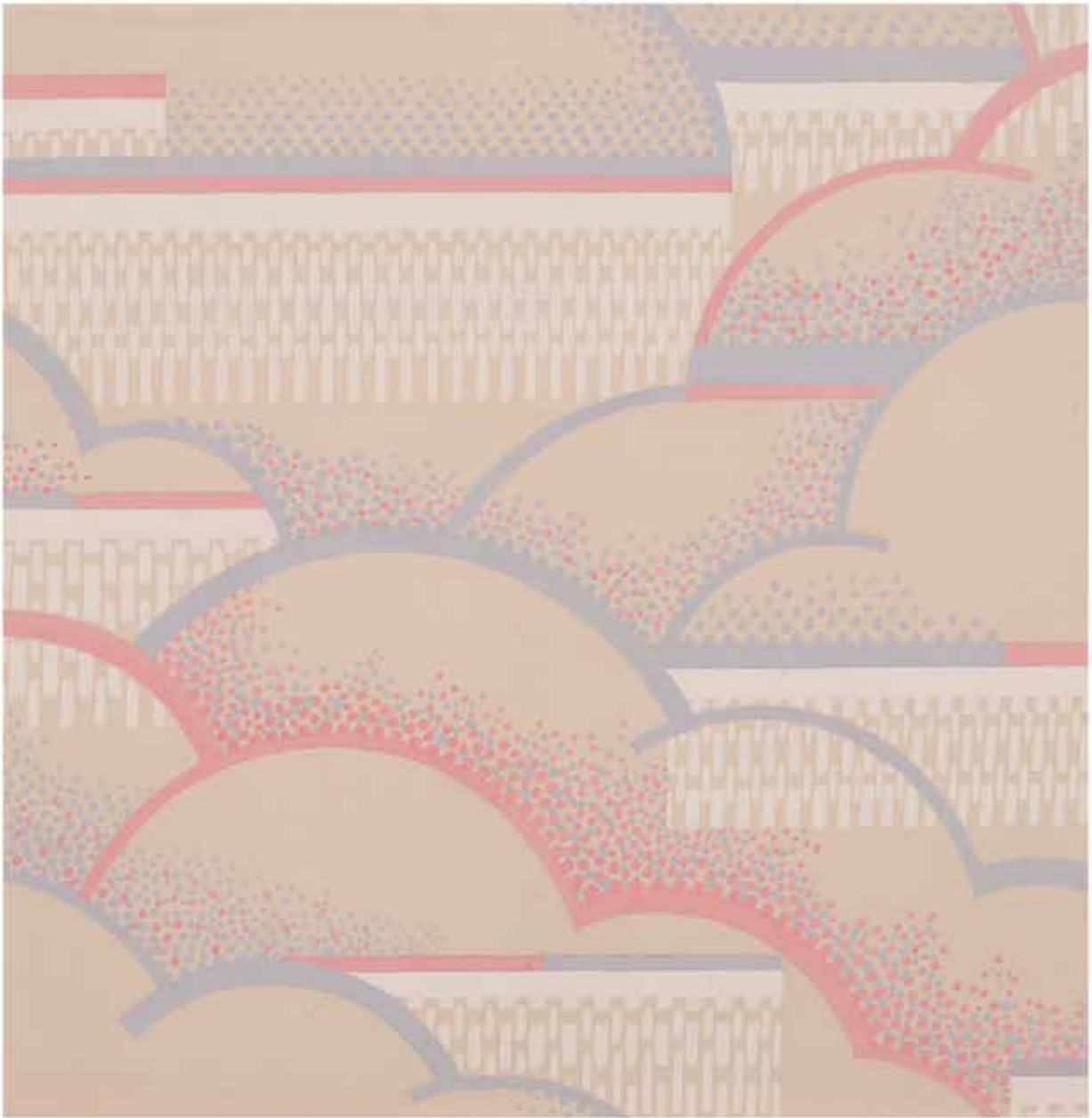
\$3,000 - 5,000

Provenance

ESSEF Balagny sur Therain, France
Beauvais Auction House, France, March & September
2007







31

FRENCH

Assorted Group of 75 Wallpaper and
Textile Designs

1875-1975

gouache on paper

smallest 17 5/8in x 25 1/2in (45cm

x 65cm); largest 25 1/2in x 32 3/8

(65cm x 82cm)

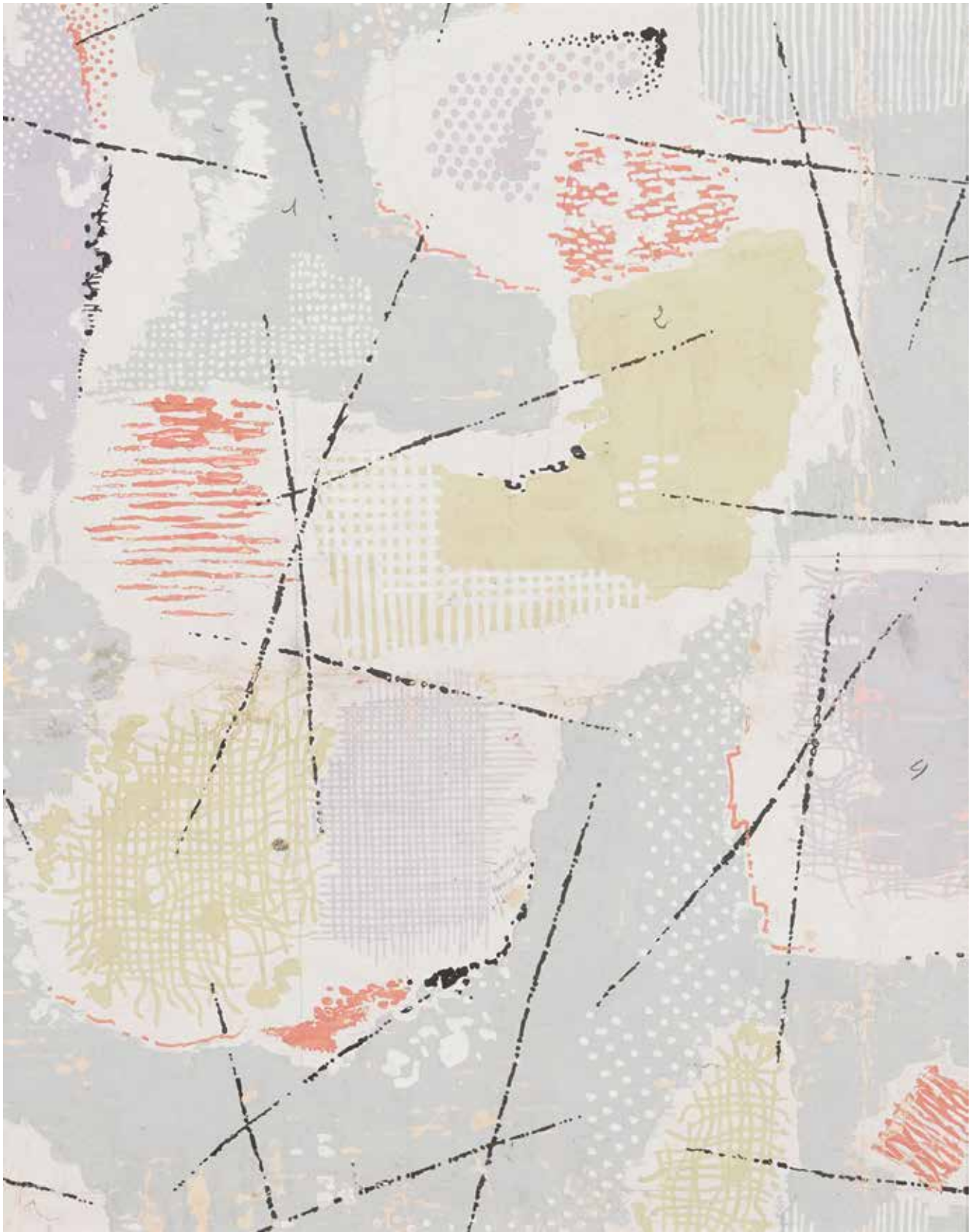
\$6,000 - 8,000

Provenance

ESSEF Balagny sur Therain, France

Beauvais Auction House, France,

March & September 2007



32

DAUM FRÈRES

Vase

circa 1925

acid cut internally decorated glass, signed 'DAUM NANCY FRANCE' with the Cross of Lorraine

height 9 1/2in (23cm)

\$2,000 - 3,000

33

DAUM FRÈRES

Two Small Vases

circa 1925

acid cut topaz and yellow glass, signed 'DAUM NANCY FRANCE' with the Cross of Lorraine

heights 4 1/2in (11.4cm) and 5 3/8in (13.5cm)

\$1,000 - 1,500

34

DAUM FRÈRES

Vase

circa 1925

acid cut yellow glass, signed 'DAUM NANCY FRANCE' with the Cross of Lorraine

height 10 1/8in (26cm)

\$3,000 - 5,000

35

DAUM FRÈRES

Vase

circa 1925

acid cut pale salmon glass, signed 'DAUM NANCY FRANCE' with the Cross of Lorraine

height 7 1/2in (19cm); diameter 9 1/2in (24cm)

\$1,000 - 1,500



36

DAUM FRÈRES

Companion Pair of Vases

circa 1925

acid-cut mottled glass, signed 'DAUM NANCY FRANCE' with the Cross of Lorraine

height 5 7/8in (15cm)

\$2,000 - 3,000

38

DAUM FRÈRES

Vase

circa 1925

acid cut yellow glass, signed 'DAUM NANCY FRANCE' with the Cross of Lorraine

height 6 3/4in (17cm)

\$800 - 1,200

37

CHARDER LE VERRE FRANÇAIS

Vase

circa 1925

acid-cut rose pink glass, signed 'Charder Le Verre Français'

height 10in (25.4cm)

\$2,000 - 3,000



36

37

36

33

38



39

JULIUS SHULMAN (1910-2009)

Lovell "Health" House, Los Angeles, California

1950

vintage gelatin silver print

sight 4 1/2 x 3 3/4in

\$10,000 - 15,000

Provenance

Craig Krull Gallery, Santa Monica, California

39



40

JULIUS SHULMAN (1910-2009)

Josef Kun House, Los Angeles, California

gelatin silver print

signed on the recto

sheet 6 x 9 1/4in (15x 23.5cm)

\$8,000 - 12,000

Literature

Julius Shulman, 'Architecture and its Photography', Taschen, 1999, p. 41 for an illustration of Shulman's photograph of the Kun House by Richard Neutra

40

41

JULIUS SHULMAN (1910-2009)

Boulder Dam, First Filling

1936

printed later, gelatin silver print

signed, titled, dated on the verso

sheet 14 x 11in (36 x 28cm)

\$3,000 - 5,000



41

42

JULIUS SHULMAN (1910-2009)

American Airlines Ticket Office, Los Angeles, California

later printed, gelatin silver print

sheet 19 3/4 x 16in (50.5 x 41cm)

\$4,000 - 6,000



42

43^W

FRENCH

Bistro Table

circa 1970

brass, beech, eglomise glass, black laminate

height 29 1/4in (74.5cm); width 28 1/4in (72cm); depth 28 1/4in (72cm)

\$1,500 - 2,000

Provenance

Drouant Restaurant, Paris

44^W

FRENCH ART DECO

Low Table

circa 1940

fruitwood

height 18 1/4in (46.5cm); width 40in (102cm); depth 20 1/2in (52cm)

\$1,200 - 1,800



43



44

45^W

JULES LELEU (1883-1961)

Rectangular Two Tiered Side Table

circa 1930

burled amboyna, stamped 'LELEU'

height 22in (56cm); width 37 3/4in (96cm); depth 19 1/2in (50cm)

\$1,200 - 1,800

Literature

'Mobilier et Decoration', n°6 Juin 1929 p.228

'Mobilier et Decoration', n°11 Novembre 1929 p.153

'Art et Decoration' Juillet-Décembre 1929 p.14

'Les Echos D'Art', n°47 June 1929 p.16

'Ensembles Nouveaux vers 1930' Editions Charles Moreau Paris Pl.26

'Mobilier et Decoration', n°11 Novembre 1931 p.490

Exhibited

19th Salon des Artistes Decorateurs, Paris, France

46^W

FRENCH

Bistro Table

circa 1970

brass, beech, engraved glass, black laminate

top engraved 'D' for Drouant

height 30in (76cm); width 23 3/4in (60cm); depth 23 3/4in (60cm)

\$1,500 - 2,000

Provenance

Drouant Restaurant, Paris



45

46

47

RENÉ LALIQUE (1860-1945)

Paquerettes Vase

Marcilhac 10-877, model introduced 1934, molded opalescent glass, sand blasted 'R.LALIQUE'
height 7 3/8in (18.8cm); diameter 6 1/2in (16.5cm)

\$2,000 - 3,000

48

RENÉ LALIQUE (1860-1945)

Avalon Vase

Marcilhac 986, design introduced 1927, molded opalescent glass, wheel-carved 'R.LALIQUE FRANCE', engraved 'No 986'
height 6in (15cm); diameter 6 1/4in (15cm)

\$1,000 - 1,500

Provenance

Private Collection, Laguna Beach, California

49

RENÉ LALIQUE (1860-1945)

Marisa Vase

Marcilhac 1002, design introduced 1927, molded opalescent glass with blue patina, engraved 'R.Lalique France No 1002'
height 9 3/4in (24cm); diameter 9in (22cm)

\$3,000 - 4,000

Provenance

Private Collection, Laguna Beach, California



50

RENÉ LALIQUE (1860-1945)

Faune Vase

Marcilhac 1062, model introduced 1931, sand-blasted 'R.LALIQUE FRANCE'

height 11 3/4in (30cm)

\$1,000 - 1,500

51

RENÉ LALIQUE (1860-1945)

Domremy Vase

Marcilhac 979, model introduced 1926, molded iridescent glass with blue patina, engraved signature 'R.Lalique France'

height 8 1/4in (21cm)

\$1,000 - 1,500



50



51

52

GABRIEL ARGY-ROUSSEAU (1885-1953)

Veilleuse: Plantes Aquatiques

circa 1924

pâte de verre, wrought iron, signed 'G. Argy-Rousseau'

height overall 6 1/2in (16.5cm)

\$4,000 - 6,000

Provenance

Private Collection, California

Literature

Janine Bloch-Dermant, 'Les Pâtes de Verre Catalogue Raisonné G.

Argy-Rousseau', Les Editions de L'Amateur, 1990, page 199

53

GABRIEL ARGY-ROUSSEAU (1885-1953)

Cendrier Médaillon

Bloch-Dermant 23.29, pâte-de-verre, signed 'G. ARGY-ROUSSEAU'

in intaglio

length 6 1/4in (16cm)

\$800 - 1,200



52



53

54

RENÉ LALIQUE (1860-1945)

Martigues Bowl

Marcihac 377, model introduced 1920, molded opalescent glass, signed 'R.Lalique' in intaglio, together with a Rene Lalique opalescent glass Coquilles plate, wheel-carved 'R.LALIQUE FRANCE'

diameter of platter 14 3/8in (36.5cm); diameter of plate 9 1/2in (23.5cm)

\$3,000 - 5,000



55^W

TOMMI PARZINGER (1930-1991)

Pair of Floor Lamps
circa 1950
silver-plated on associated fluted columnar wood bases
heights 79in (200cm); width of base 12 1/4in (31cm)

\$2,000 - 3,000

56^W

GUSTAV SIEGEL (1880-1970)

Pair of Secessionist Armchairs
circa 1905
for J & J Kohn, steam bent beech, brass, chair backs upholstered in
18th century brocade, seats upholstered in Clarence House glazed
linen
height 29 3/4in (76cm); width 20 1/2in (52cm); depth 20in (51cm)

\$1,500 - 2,500

Provenance

Kimcherova Antiques, New York

57^W

JOSEF FRANK (1885-1967)

Tea Trolley
circa 1930
for Svenskt Tenn, brass, glass
height 23 3/4in (60cm); width 19.5in (50cm); depth 25in (64cm)

\$2,500 - 3,500

Provenance

Jackson Design AB, Stockholm, Sweden



55



56



55



57

58

FRENCH

Pair of Two Arm Wall Sconces

1940s

nicked bronze, mirrored glass

height 15 1/2in (39cm); width 10 1/4in (26cm); depth 5 1/2in (13cm)

\$2,500 - 3,500



59^W

SAMUEL MARX (1885-1964)

Chest of Drawers

circa 1940

custom manufactured by the Quigley Company, Chicago

serpentine form, silver leafed wood, bronze

height 35 3/4in (90cm); width 93 3/4in (238cm); depth 23in (58cm)

\$15,000 - 25,000

Provenance

Liz O'Brien, New York

Samuel Marx was an architect and designer known for luxe modernist pieces with an Art Deco sensibility. Marx's client list spanned the social and entertainment worlds and included patrons such as J. Paul Getty and Edward G. Robinson.



60

ANDRÉ ARBUS (1903-1969)

Pair of Wall Sconces

circa 1940

made for Vadim Androusov

plaster

height 13 1/2in (34cm); width 6 3/4in (17cm); depth 7 1/4in (18cm)

\$3,000 - 5,000

Provenance

Galerie Olivier Watelet, Paris



60

61^W

JACQUES ADNET (1901-1984)

Cabinet

circa 1945

most probably made for la Compagnie des Arts Français in collaboration with Maurice Savin

oak, glazed and enameled ceramic

height 52 1/4in (133cm); width 79in (201cm); depth 21.5in (55cm)

\$5,000 - 7,000



60



61

62^W

MONTEVERDI-YOUNG

Sofa

circa 1960

walnut, biscuit tufted upholstery

height 28 1/2in (72cm); width 78 1/4in (198cm); depth 35in (88cm)

\$2,500 - 3,500

63^W

GUISEPPI SCAPINELLI (1891-1982)

Coffee Table

circa 1960

peroba de campos wood, glass

height 18in (46cm); length 50 3/4in (129cm); depth 22in (56cm)

\$1,500 - 2,000

62



63

64

ANTHONY REDMILE (ACTIVE 1960S/1970S)

Tortoise Box

circa 1975

silver plated, resin, hardstone

stamped 'redmile London'

height 11in (28cm); width 18in (46cm); depth 10in (25.5cm)

\$1,000 - 1,500

Provenance

Private Collection, Santa Barbara, California

65^W

WILLIAM HAINES (1900-1973)

Gemütlich Table

1951

green tortoiseshell spotted leather and ebonized wood

height 27in (68cm); diameter 42in (106cm)

\$3,000 - 5,000

Gemütlich (cozy) tables were used in countless William Haines commissions. The design of the table was intended to inspire conversation in social situations. The offered lot is covered in signature Haines tortoiseshell spotted leather



66

ANTHONY REDMILE (ACTIVE 1960S/1970S)

Pair of Tusks on Stands

circa 1975

silver plated, horn, malachite, ebonized wood, ostrich egg
height 29 1/4in (74cm); width 18in (46cm), depth 9in (23cm)

\$1,000 - 1,500

Provenance

Private Collection, Santa Barbara, California

67^W

TALLER MARIA TERESA MENDEZ (ESTABLISHED 1962)

Console Table

circa 1973

for Karl Springer, lacquered parchment, glass
stamped 'Talleres Maria Teresa Mendez'
height 35in (89cm); width 47in (119.3cm); depth 16in (40.7cm)

\$5,000 - 8,000

Although based in Mexico City, Maria Teresa Mendez also worked in New York for Karl Springer. Mendez's furniture was collected by Dolores del Rio, Frank Sinatra and Aristotle Onassis.

68

ANTHONY REDMILE (ACTIVE 1960S/1970S)

Crane Vessel on Stand

circa 1975

silver plated, ostrich egg, hardstone, glass, ebonized wood
height 22 1/2in (57cm); width 12in (30cm); depth 10in (26cm)

\$1,200 - 1,500

Provenance

Private Collection, Santa Barbara, California

69^W

MEXICAN

Bar Cart

circa 1965

gilt metal, mirrored glass
height 33in (84cm); width 28in (71cm); depth 18in (46cm)

\$1,000 - 1,500



70^W

GERALD THURSTON (ACTIVE 1950S/1960S)

Pair of Table Lamps

circa 1950

for Lightolier, brass, ceramic, paper shades

overall height 43in (109cm); width 16in (41cm); depth 12in (30.5cm)

\$1,000 - 1,500

71^W

JAMES MONT (1904-1978)

Pair of Side Tables

circa 1940

limed oak, glass

height 21 3/4in (55.2cm); width 28in (71cm); depth 14in (35.5cm)

\$4,000 - 6,000

Provenance

20th Century Design, Sotheby's, New York, March 27, 2009

Private Collection, New York

72

THEODOROS STAMOS (1922-1997)

Abstract Composition in Orange

1974

gouache on paper, signed lower left and dated '1974'

sheet height 30 1/2in (78cm); width 21 3/4in (55cm); framed height 44 1/2in (113cm); width 36in (91cm)

\$6,000 - 8,000

Provenance

Private Collection, Florida

73

SONJA BLOMDAHL (BORN 1952)

Vase

1990

glass, signed 'Sonja B12190'

height 11 1/4in (28cm)

\$1,500 - 2,500

Provenance

Prominent Bay Area Collector



74

LINO TAGLIAPIETRA (BORN 1934)

Mogambo Vase

1986

for Effetre International, internally decorated glass, signed 'Lino Tagliapietra BY EFFETRE INTERNATIONAL Murano ITALY 1986'
height 10 1/2in (26cm)

\$1,000 - 1,500

Provenance

Collection of Martin and Lee Rubin, Cave Creek, Arizona

75^W

T.H. ROBSJOHN-GIBBINGS (1905-1976)

Console Table

circa 1961

for Baker, walnut, brass oval Baker tag

height 30in (66cm); width 60in (153cm); depth 20in (51cm)

\$3,000 - 5,000

76

DALE CHIHULY (BORN 1941)

Macchia

1983

blown glass, signed 'Chihuly 1983'

8in (20cm) x 14in (35cm)

\$4,000 - 6,000

Provenance

Prominent Bay Area Collector

77^W

T.H. ROBSJOHN-GIBBINGS (1905-1976)

Coffee Table

circa 1936

for Sans Epoque, oak, stamped 'SANS EPOQUE Robsjohn Gibbings'

height 18in (45cm); width 47 5/8in (120cm); depth 24in (60cm)

\$3,500 - 4,500



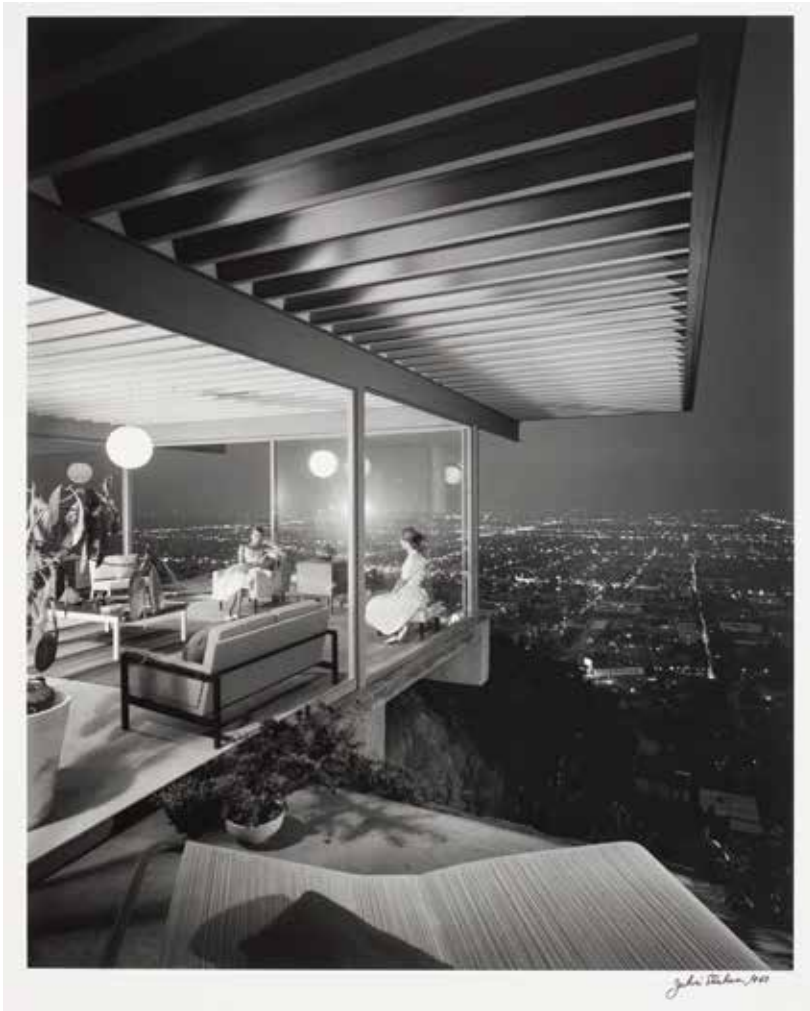
72



75



77



78

78

JULIUS SHULMAN (1910-2009)

Case Study House #22, Hollywood Hills,
California

1960

gelatin silver print

signed and dated '1960'

sheet 24 x 20in (61 x 51cm)

\$7,000 - 9,000



79

79

JULIUS SHULMAN (1910-2009)

Case Study House #9, Pacific Palisades,
California

1950

later printed, gelatin silver print

signed and with photographer's credit stamp
on the verso

sheet 16 x 20in (41 x 51cm)

\$6,000 - 8,000

Literature

Julius Shulman, 'Architecture and its
Photography', Taschen, 1999, p. 65-66 for an
illustration of Shulman's image of Case Study
House #9

Case Study House #9 also known as the
Entenza House was designed by Charles
Eames and Eero Saarinen

80

JULIUS SHULMAN (1910-2009)

Case Study House #21, Los Angeles, California

circa 1956

printed 2003, chromogenic print

signed, dated and credit stamp on the verso
sheet 24 x 20in (61 x 51cm)

\$7,000 - 9,000

Literature

Julius Shulman, 'Architecture and its Photography', Taschen, 1999, p. 74, for an illustration of Shulman's interior photograph of Pierre Koenig's Case Study House #21



80

81

JULIUS SHULMAN (1910-2009)

Kaufmann House, Palm Springs, California 1947

vintage gelatin silver print

signed and dated '1947' on the verso
sheet 20 x 24in (51 x 61cm)

\$10,000 - 15,000

Literature

Julius Shulman, 'Architecture and its Photography', Taschen, 1999, p. 96-97, for an illustration and discussion of Shulman's iconic image of Richard Neutra's Kaufmann House poolside at dusk



81

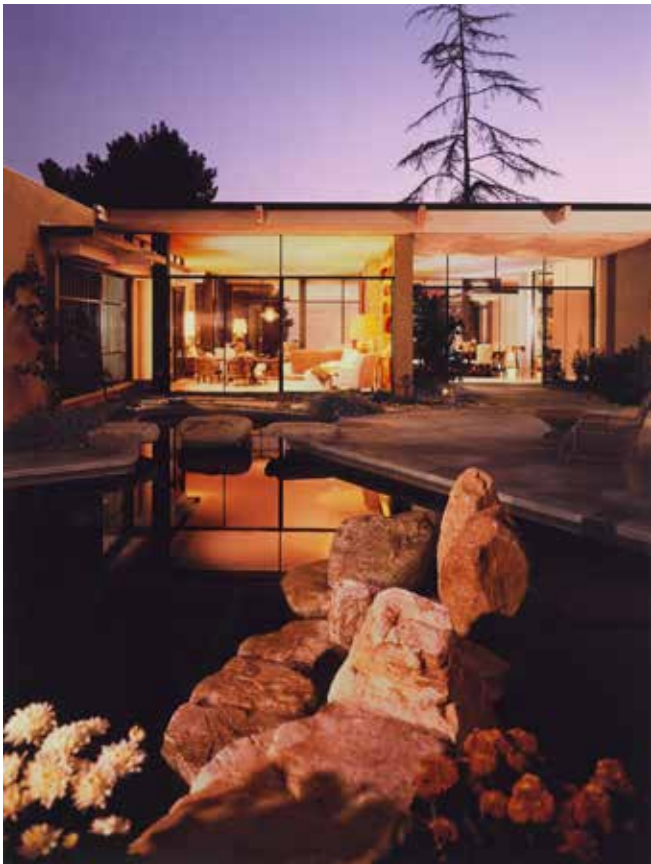


82

82

JULIUS SHULMAN (1910-2009)
Spencer House, Malibu, California
chromogenic print
sight 20 1/2 x 16 1/2in (52 x 42cm)

\$6,000 - 8,000



83

83

JULIUS SHULMAN (1910-2009)
Case Study House #20, Altadena, California
chromogenic print
photographer's credit stamp and notation 'Acceptable
Please Hold and Resubmit with Future Orders' on the
verso
sheet 16 x 12in (41 x 30cm)

\$6,000 - 8,000

84

JULIUS SHULMAN (1910-2009)

Case Study House #20, Altadena, California
1958

later printed, chromogenic print
signed and dated '1958' on the verso
sight 16 x 19 3/4in (41 x 50.5cm)

\$4,000 - 6,000

Julius Shulman, 'Architecture and its
Photography', Taschen, 1999, p. 82 for an
illustration of Shulman's image of Case Study
House #20

Case Study House #20 also known as the
Bass House was designed by Buff, Straub
and Hensman



84

85

JULIUS SHULMAN (1910-2009)

Case Study House #8, Pacific Palisades,
California
1958

later printed, chromogenic print
signed and with photographer's credit stamp
on the verso
sight 12 x 15 3/4in (30 x 40cm)

\$4,000 - 6,000

Literature

Julius Shulman, 'Architecture and its
Photography', Taschen, 1999, p. 66-67, for
an illustration of Shulman's photograph of the
Eames House

Case Study House #8 was designed by
Charles Eames and was the personal
residence of Charles and Ray Eames



85

86^W

AMERICAN

PT19 Airplane Seat

circa 1943

for Fairchild Aviation Corp., molded plywood

height 26in (66cm); width 17 1/4in (43cm); depth 20in (50cm)

\$3,000 - 5,000

Literature

John Neuhart, Marilyn Neuhart and Ray Eames, 'Eames design: The Work of the Office of Charles and Ray Eames', Harry N. Abrams Inc. Publishers, New York, 1989 p. 42-43 for an entry on molded plywood aircraft parts and an image of a pilot seat

87

CHARLES (1907-1978) & RAY EAMES (1912-1988)

BT13 Trim Tab

circa 1943

for Evans Product Company, painted and molded plywood

length 19 1/2in (49cm); width 6 1/4in (15cm); depth 2in (5cm)

\$800 - 1,200

Literature

John Neuhart, Marilyn Neuhart and Ray Eames, 'Eames design: The Work of the Office of Charles and Ray Eames', Harry N. Abrams Inc. Publishers, New York, 1989 p. 42-43 for an entry on molded plywood aircraft parts

88^W

CHARLES (1907-1978) & RAY EAMES (1912-1988)

Companion Pair of BT13 Ailerons

circa 1943

for Evans Product Company, molded plywood

length 31 1/2in (80cm); width 16 1/2in (41cm); depth 4 1/2in (11cm)

\$2,000 - 3,000

Literature

John Neuhart, Marilyn Neuhart and Ray Eames, 'Eames design: The Work of the Office of Charles and Ray Eames', Harry N. Abrams Inc. Publishers, New York, 1989 p. 42-43 for an entry on molded plywood aircraft parts



86



87



88

88

89^W

CHARLES (1907-1978) & RAY EAMES (1912-1988)

Rare BT13 Vertical Stabilizer

circa 1943

for Evans Product Company, molded plywood

height 71in (180cm); width 29 1/4in (74cm); depth 6 3/4in (17cm)

\$15,000 - 25,000

Literature

John Neuhart, Marilyn Neuhart and Ray Eames, 'Eames design: The Work of the Office of Charles and Ray Eames', Harry N. Abrams Inc. Publishers, New York, 1989 p. 42-43 for an entry on molded plywood aircraft parts and an image of stabilizers

A Charles and Ray Eames vertical stabilizer was exhibited alongside Eames plywood splints and experimental figures at 'The Design for Use' exhibition at The Museum of Modern Art from May 24-October 22, 1944



89

90^W

CHARLES (1907-1978) & RAY EAMES (1912-1988)

Rare BT13 Airplane Fuselage

circa 1943

for Evans Product Company, molded plywood

height 82 1/2in (209cm); width 50in (127cm); depth 28in (71cm)

\$8,000 - 12,000

Literature

John Neuhart, Marilyn Neuhart and Ray Eames, 'Eames design: The Work of the Office of Charles and Ray Eames', Harry N. Abrams Inc. Publishers, New York, 1989 p. 42-43 for an entry on molded plywood aircraft parts and an image of fuselage sections

Charles and Ray Eames experimentation and triumphs with aircraft parts ultimately informed their now iconic molded plywood furniture designs



90

91^W

HANS J. WEGNER (1914-2007)

Set of Six Round Chairs

designed 1950, model JH501

oak and upholstery

branded 'JOHANNES HANSEN COPENHAGEN DENMARK JH',

some with Knoll paper label

height 30 3/8in (77cm); width 24 3/4in (63cm); depth 18 1/2in (47cm)

\$4,000 - 6,000

Provenance

Weyerhaeuser Company Collection

Literature

Christian Holmstedt Olesen, 'Hans J. Wegner: Just One Good Chair',

Hatje Cantz, 2014, p. 135



92^W

HANS J. WEGNER (1914-2007)

Set of Eight Round Chairs

designed 1950, model JH501

oak and upholstery

branded 'JOHANNES HANSEN COPENHAGEN DENMARK JH',

some with Knoll paper label

height 30 3/8in (77cm); width 24 3/4in (63cm); depth 18 1/2in (47cm)

\$5,000 - 7,000

Provenance

Weyerhaeuser Company Collection

Literature

Christian Holmstedt Olesen, 'Hans J. Wegner: Just One Good Chair',

Hatje Cantz, 2014, p. 135



93^W

PIETRO CHIESA (1892-1948)

Table Lamp

circa 1932

for Fontana Arte, brass, clear and frosted glass

height 24in (61cm); diameter of shade 16in (41cm)

\$3,000 - 5,000



93

94^W

MAX INGRAND (1908-1969)

Table Lamp

circa 1954

for Fontana Arte, brass, glass

height 34in (87cm); width 8in (20cm); depth 7in (17.8cm)

\$3,000 - 5,000



94

95

JACQUES ADNET (1901-1984)

Spherical Lamp

circa 1930

glass, chrome plated brass

height 10 1/2in (26cm)

\$2,000 - 3,000

96

PIERO FORNASETTI (1913-1988)

Box and Tavola Antica Tray

third quarter 20th century

transfer-printed enameled metal, box with mahogany liner

box 1 1/2in x 7 7/8in x 3 1/8in (4cm x 20cm x 8cm); tray 18 1/4in x 22in (46.6cm x 58.4cm)

\$1,000 - 1,500



95



96



MARIE-LOUISE IDESTAM-BLOMBERG

Chess Set

designed circa 1925

pewter, later marble and onyx board

*length of board 18in (45cm); width 17 15/16in (45cm); heights of chess pieces 1 1/2in to 1 1/4in (3cm)***\$1,000 - 2,000**

Idestam-Blomberg's chess set design was awarded a gold medal at the 1925 Paris Exposition Internationale des Arts Décoratifs et Industriels Modernes



98^W

HARVEY PROBBER (1922-2003)

Python Table

circa 1950

oak, glass

height 14 3/4in (38cm); 44in (112cm) width, 44in (112cm) depth

\$2,500 - 3,500

Literature

Todd Merrill and Julie V. Iovine, 'Modern Americana', Rizzoli International, 2008, p. 192-193 for an illustration and text on Probbert's python table

99^W

PIERRE JEANNERET (1896-1967)

Pair of Scissor Chairs

circa 1950

for Knoll Associates, birch, chrome plated steel, upholstery

height 29 1/4in (74cm); width 22 5/8in (57cm); depth 30 1/2in (77cm)

\$3,000 - 5,000

Provenance

Collection of Drs. John and Karen Woodward

Literature

Eric Larrabee and Massimo Vignelli, 'Knoll Design', Abrams, New York, 1990, p.42



98

99

100^W

ATTRIBUTED TO ERIK HOGLUND (1932-1998)

Table Lamp

circa 1975

for Boda Nova Glassworks, blown and molded green glass
height from base to finial 39in (99cm)

\$1,500 - 2,000

Provenance

Private Collection, California



101

KREG KALLENBERGER (ACTIVE 1990S)

Titanic Series #28386

1994

cast glass, signed 'K Kallen 28386'

6 3/8in (16.2cm) x 17 1/2in (44.5cm)

\$1,000 - 1,500

Provenance

Prominent Bay Area Collector



102

JULIUS SHULMAN (1910-2009)

Kramer House, Norco, California

1953

later printed, gelatin silver print

sight 12 x 15 1/4in (30.5 x 39cm)

\$7,000 - 9,000

Literature

Julius Shulman, 'Architecture and its Photography', Taschen, 1999, p. 20 for an illustration of Shulman's image of Richard Neutra's Kramer House

103^W

ARNE JACOBSEN (1902-1971)

Pair of Swan Chairs

designed circa 1958

for Fritz Hansen, chromed steel, leather

stamped 'FH Made in Denmark 3316-20.22'

height 31in (79cm); width 30in (76cm); depth 21in (53cm)

\$4,000 - 6,000

Jacobsen originally designed the Swan chair for the lobby and lounge areas of the SAS Royal Hotel, Copenhagen

104^W

HANS J. WEGNER (1914-2007)

Coffee Table

circa 1950

for Andreas Tuck, teak, steel, underside branded

'ANDR.TUCK DESIGN.HANS J. WEGNER MADE IN DENMARK' and Danish Control mark

height 15in (38cm); diameter of table 43 1/4in (109cm)

\$1,500 - 2,500



102



103



104



103

105^W

DOYLE LANE (1925-2002)

Multi Color Tile Assemblage

tiles circa 1960

glazed stoneware

height 48in (122cm); width 96in (244cm); depth 1 1/2in (4cm)

\$12,000 - 18,000



105

106^W

JOE COLOMBO (1930-1971)

Tube Chair

circa 1969

manufactured by Flexform, pvc plastic, tubular steel, rubber,

polyurethane foam, synthetic jersey-knit upholstery

height 24in (61cm); width 24in (61cm); depth 42in (107cm)

\$3,000 - 5,000



106

107

DAME LUCIE RIE (1902-1995)

Coffee Pot and Creamer

circa 1965

stoneware with off white glaze, impressed 'LR' monogram, together with a small cup with off white and smoky grey glaze, impressed 'LR' monogram

height of pot 8 1/4in (21cm); height of creamer 5in (12.8cm); height of cup 3in (7.6cm) (3)

\$2,800 - 3,200



107

108

GERTRUD (1908-1971) AND OTTO NATZLER (1908-2007)

'Massive' Bowl

circa 1967

glazed terracotta, signed 'NATZLER' in black and bearing paper label
with typed 'Q030'

height 2 1/2in (6.4cm); diameter 4 1/8in (10.3cm)

\$1,500 - 2,000

Provenance

Couturier Gallery, Los Angeles, California, 1998

109

CLAUDE CONOVER (1907-1994)

Pitcher

circa 1960

impressed mark 'CLAUDE CONOVER' in a box

height 14in (35.5cm)

\$1,500 - 2,000



108



109

110

PETER VOULKOS (1924-2002)

Lidded Vessel

circa 1955

glazed stoneware, signed on the underside
height 13in (33cm); diameter 15in (38cm)

\$1,200 - 1,800

111

PETER VOULKOS (1924-2002)

Egg Shaped Footed Vase

circa 1955

glazed stoneware, signed on the underside
height 10 1/2in (26cm)

\$2,000 - 3,000

112

PETER VOULKOS (1924-2002)

Footed Vase

circa 1955

glazed stoneware, signed on the underside
height 5 1/4in (13cm); diameter 5in (12cm)

\$600 - 800



110



111



112

113

PETER VOULKOS (1924-2002)

Large bottle vase

circa 1955

glazed stoneware

height 20in (50cm)

\$4,000 - 6,000



113

114

PETER VOULKOS (1924-2002)

Shallow bowl

circa 1955

glazed stoneware, incised signature on the underside

height 2 1/2in (6cm); diameter 14 1/2in (36cm)

\$1,500 - 2,500

115

PETER VOULKOS (1924-2002)

Group of Five Objects

circa 1955

comprising a footed vase, footed cup, pitcher and two footed bowls

glazed stoneware

signed on the underside

height of footed vase 4 1/2in (11cm); diameter 5 1/2in (13cm); height

of footed cup 4in (10cm); diameter 3 1/4in (8cm); height of pitcher

6 1/4in (15cm); length over handle 6 1/4in (15cm); height of bowl

2in (5cm); diameter 7 1/2in (19cm); height of small footed bowl 4in

(10cm); diameter 6in (15cm)



114

115

115

116

PETER VOULKOS (1924-2002)

Low Shallow Bowl

circa 1955

glazed stoneware, incised signature on the underside

height 2in (5cm); diameter 12 1/5in (30cm)

\$1,200 - 1,800



115

116

115

115

117

PETER VOULKOS (1924-2002)

Globular Bottle Vase

circa 1955

glazed stoneware, signed on the underside

height 8in (20cm)

\$1,000 - 1,500

118

PETER VOULKOS (1924-2002)

Vase

circa 1955

glazed stoneware with floral decoration, signed on the underside

height 13 3/4in (34cm)

\$2,000 - 4,000

119

PETER VOULKOS (1924-2002)

Covered Vessel

circa 1955

glazed stoneware, incised signature on the underside

height 6in (15cm); diameter 6in (15cm)

\$600 - 800



120

PETER VOULKOS (1924-2002)

Bottle

circa 1953

glazed stoneware, incised 'Voulkos' signature partially obscured by masking tape with worn inscription, '66' in red paint

height 12in (30cm)

\$1,800 - 2,500

Exhibited

Awarded the Abraham and Strauss General Award for the best work in ceramics at the Brooklyn Museum, New York, 'Designer Craftsmen U.S.A. 1953', 22 October-30 December 1953; traveled to the Art Institute of Chicago, 15 March-26 April 1954 and to the San Francisco Museum of Art, 17 June-15 August 1954.

It subsequently traveled nationally under the auspices of the American Federation of Arts Catalogue, ill. p 14, fig. 66; p. 69, checklist no. 66

Literature

'Designer Craftsmen U.S.A. 1953,' Craft Horizons, November/December 1953, p. 12-18, ill. p. 17

We are grateful to Sam Jornlin and the Voulkos & Co. Catalogue Project for assisting with this catalogue description.



120



121

121

JULIUS SHULMAN (1910-2009)

Drake House, Los Angeles, California

1946

vintage gelatin silver print

signed on the verso

sheet 8 x 10in (20 x 26cm)

\$7,000 - 9,000

Provenance

Craig Krull Gallery, Santa Monica, California

Literature

Julius Shulman, 'Architecture and its Photography',
Taschen, 1999, p. 92 for an illustration of the Drake House
by Shulman



122

122

JULIUS SHULMAN (1910-2009)

Miller House, Palm Springs, California

1939

vintage gelatin silver print

sheet 7 1/4 x 9 7/8in (19 x 25cm)

\$6,000 - 8,000

Julius Shulman, 'Architecture and its Photography',
Taschen, 1999, p. 30 for an illustration of Shulman's image
of Richard Neutra's Miller House

123

JULIUS SHULMAN (1910-2009)

Miller House, Palm Springs, California

1939

vintage gelatin silver print

sight 7 3/8 x 9 1/2in (9 x 24cm)

\$6,000 - 8,000



123

124

JULIUS SHULMAN (1910-2009)

Loewy Residence, Palm Springs, California

1947

later printed, gelatin silver print

sight 12 x 15 1/4in (30 x 39cm)

\$10,000 - 15,000

Literature

Julius Shulman, 'Architecture and its Photography', Taschen, 1999, p. 146-147 for an illustration of Shulman's iconic image of Albert Frey's Loewy House in Palm Springs, California



124

125^W

MARIA KIPP (1900-1988)

Three Wall Panels

circa 1955

bamboo, lurex, chenille

approximate heights 120in (305cm); widths 69in (175cm)

\$1,800 - 2,500

Maria Kipp, a European emigre, was trained in textile design, weaving and painting. In 1924, Kipp opened an atelier in Los Angeles that featured handworked textiles for architects and interior designers including Paul T. Frankl, Richard Neutra and R.M. Schindler

126^W

GIUSEPPE SCAPINELLI (1891-1982)

Coffee Table

circa 1960

peroba de campos, glass

height 18in (46cm); length 51in (130cm); depth 21 1/2in (55cm)

\$1,800 - 2,500



125

126

127

SONJA BLOMDAHL (BORN 1952)

Sphere

blown glass, signed 'Sonja SP6286'

height 10 1/2in (26cm); diameter 13in (33cm)

\$1,500 - 2,000

Provenance

Prominent Bay Area Collector

128^W

SERGIO RODRIGUES (1927 - 2014)

Taja Dining Suite

circa 1978

peroba wood

comprising a table and four chairs

height of table 28in (71cm); diameter 35 1/5in (89cm);

height of chairs 29 1/2in (75cm); width 18in (46cm); depth 18in (46cm)

\$1,500 - 2,000



128

129^W

HELGE VESTERGAARD-JENSEN (1917-1987)

Set of Eight High Back Dining chairs

circa 1963

for Peder Pedersen, teak, leather

height of armchairs 38in (37.7cm); width 20.5in (52cm); depth 20in (51cm); height of side chairs 37in (94cm); width 19in (49cm); depth 19in (49cm)

\$3,000 - 5,000



130^W

FRANK KYLE (ACTIVE CIRCA 1950)

Credenza

circa 1950

with Pepe Mendoza pulls, bronze, enamel, mahogany
pulls stamped with Mendoza marks

height 35in (89cm); width 82.5in (221cm); depth 22in
(56cm)

\$3,000 - 5,000





131
CHRISTINE FEDERIGHI (1949-2006)

Side Leaves
1994
ceramic
height 41 1/2in (105cm)

\$1,000 - 1,500

Provenance
Prominent Bay Area Collector

132
MAX ERNST (1891-1976)

Elfo III
Fucina degli Angeli, corrosivo glass, inscribed 'Elfo 3 Max Ernst
(remainder obscured), mounted on an acrylic board
height 6in (15.2cm); width 6 1/4in (16cm)

\$2,000 - 3,000

Provenance
Private Collection, California



132

131

133

PEPE MENDOZA (ACTIVE CIRCA 1950)

Pair of Sun Table Lamps

circa 1950

brass, bronze and malachite, each stamped with maker's marks

height 22 3/4in (57cm); width 5 5/8in (14cm); depth 5 3/4in (14cm)

\$4,000 - 6,000



133

134^W

ALVAR AALTO (1898-1976)

Tank Chair

1930s

for Artek, birch, wool

height 26in (66cm); width 30in (76cm), depth 30in (76cm)

\$1,500 - 2,000

135^W

WARREN PLATNER (1919-2006)

Pair of Stools

designed 1966

for Knoll, steel, upholstery

height 20in (51cm); diameter 16in (41cm)

\$1,200 - 1,800

Provenance

Figilis Collection, Los Angeles, California



134

135

136^W

HANS J. WEGNER (1914-2007)

Round Table and Six Heart Chairs

circa 1952

for Fritz Hansen, models FH-4602 and FH-4103 respectively

oak and teak

height of table 28 1/2in (72cm); diameter 47 1/2in (120cm); height of chairs 29 3/8in (74cm); width 20 1/2in (52cm); depth 18in (45cm)

\$2,000 - 4,000

Provenance

Collection of Drs. John and Karen Woodward



136

137

JULIUS SHULMAN (1910-2009)

Taliesin West, Scottsdale, Arizona

chromogenic print

signed with photographer's credit stamp on the verso
sheet 16 x 20 in (41 x 51cm)

\$5,000 - 7,000

138^W

CONTEMPORARY

Console

21st century

leather, lacquered wood and patinated bronze with velvet lined
drawers

height 35in; width 120in; depth 15in

\$3,000 - 5,000



137



138

139^W

GEORGE NELSON (1908-1986)

Pair of Swag Leg Armchairs

circa 1959

designed for Herman Miller, model MAA, fiberglass, chrome plated steel, rubber, polished aluminum and plastic, with February 1959 paper labels for Herman Miller

height 33 1/4in (84cm); width 28in (71cm); depth 23in (58cm)

\$2,000 - 3,000

Provenance

Collection of Drs. John and Karen Woodward

140^W

JULES WABBES (1919-1974)

Pair of Small Chests of Drawers

circa 1965

mahogany, chrome plated steel

each stamped 'Wabbes'

height 26 3/4in (67cm); width 21 3/4in (55cm); depth 23in (58cm)

\$3,000 - 5,000

Provenance

J. F. Chen, Los Angeles, California



139

140

139

141^W

ALBERT IRVIN (1922-2015)

Abstract Composition

1978

oil on canvas, signed 'Irvin 78' on verso
height 66in (168cm); width 75 1/4in (191cm)

\$3,000 - 5,000

Provenance

Private Collection, Santa Barbara, California

142^W

CARLO BUGATTI (1856-1940)

Corner Chair

circa 1900

walnut, vellum, bone, leather, pewter, copper, brass, rope, silk
height 28in (71cm); width 27in (69cm); depth 26in (66cm)

\$4,000 - 6,000

143^{W Y}

GIUSEPPE SCAPINELLI (1891-1982)

Cabinet

circa 1960

caviuna wood and brass

height 35in (89cm); width 51in (130cm); depth 18in (46cm)

\$1,500 - 2,000



141



142



143



144

145

144

MARCELLO FANTONI (1915-2011)

Figura di Donna

1958

glazed earthenware, signed 'Fantoni 1958'

height 18 1/4in (46cm); width 8 1/4in (21cm); depth 8in (20cm)

\$1,200 - 1,800

Provenance

Collection of Drs. John and Karen Woodward

145^W

TUNICO T.

Coffee Table

circa 1960

angico vermelho wood

height 14in (35cm); diameter 36in (91cm)

\$1,500 - 2,000

146^W

IGNAZIO GARDELLA

Shelving Unit

circa 1955

for Azucena, enameled steel, brass, mahogany

height 88in (224cm); width 123in (312cm) ; depth 14in (36cm)

\$15,000 - 20,000



146

147

LUCIANO GASPARI (BORN 1913)

Sassi Vase

designed 1962

for Salviati, hand formed glass with applied rings, signed 'Salviati design by L. Gaspari'

height 11 1/4in (28.6cm)

\$2,000 - 3,000

The first edition of these vases was presented at the 1962 Venice Biennale

Provenance

Private Collection, California

148

LUCIANO GASPARI (BORN 1913)

Vase

circa 1960

for Salviati, blown glass with applied glass ribbon, with stopper

height 13 3/4in (35cm); length 11 3/4in (30cm)

\$1,500 - 2,000

Provenance

Private Collection, California

149^W

ALBERT IRVIN (1922-2015)

Portal

1973

oil on canvas, signed and dated on verso 'Irvin 79' and inscribed 'Portal' on back of stretcher

height 84in (214cm); width 120in (305cm)

\$4,000 - 6,000

Provenance

Private Collection, Santa Barbara, California

150^W

ZANINI DE ZANINE CALDAS (BORN 1978)

Live Edge Dining Table

21st century

reclaimed goncalo alves wood, ipe, pequi, peroba rosa, and muiracatiara wood

height 29in (74cm); width 134in (340cm); depth 39 1/2in (101cm)

\$3,000 - 5,000



147



148



149



150

151

LAURA ANDRESON (1902-1999)

Assorted Group of Eight Bowls and Vases

circa 1980

glazed earthenware, each signed on underside

height of smallest 6 1/4in (16cm); diameter 2 1/2in (6.5cm); height of largest 5in (13cm); diameter 12in (30cm)

\$3,200 - 4,400





152^W

DANISH

Three Seat Sofa

circa 1965

stamped 'Made in Denmark JEKI MOBILERFABRIK'

height 25 5/8in (65cm); width 90 1/2in (229cm); depth 29in (73cm)

\$1,500 - 2,500

153

DIEGO MATTHAI (BORN 1942)

Set of Nine Spheres

circa 1990

chromed metal

largest sphere inscribed 'Mattai'

diameter of largest sphere 17in (43cm)

\$1,800 - 2,200

154

MATHIAS GOERITZ (1915-1990)

Set of Three Sculptures

circa 1950

patinated brass, signed 'MG' on underside

height of each 7 3/4in (19.5cm)

\$5,000 - 8,000



152

154

153

155

155^W

ATTRIBUTED TO ARTURO PANI (1915-1981)

Coffee Table

circa 1960

travertine, mahogany, brass

height 10 1/4in (26cm); width 43in (109cm); depth 42 3/4in (108cm)

\$1,800 - 2,500

Provenance

Private Collection, Mexico City

156^W

MEXICAN

Pair of Modernist Lounge Chairs

circa 1955

mahogany, aluminum, tanned leather, faux leather

heights 28 3/4in (73cm); widths 31 5/8in (80cm); depths 26 1/4in (66cm)

\$1,800 - 2,500



157^W

MEXICAN

Modernist Dining Table

circa 1950

ebonized wood

height 30 1/2in (78cm); length 98in (249cm); width 42in. (97cm)

\$2,500 - 3,500



158^W

ATTRIBUTED TO JORGE ZALSZUPIN

Seven Dining Chairs

circa 1960

for L'Atelier, mixed woods, leather

height 33in (84cm); width 19 1/4in (49cm); depth 20in (51cm)

\$1,200 - 1,800



159

JAMES LOVERA (1920-2015)

Assorted Group of Eight Bowls

glazed earthenware, each signed 'lovera'

height of smallest 2 1/4in (6cm); diameter of smallest 8in (20cm);

height of largest 3 1/2in (9cm); diameter of largest 13 1/2in (34.5cm)

\$4,500 - 6,400





160^W

EDWARD WORMLEY (1907-1995)

Pair of 'Edward's' Armchairs

circa 1960

for Dunbar, ebonized mahogany, steel, calfskin

height 32in (81.5cm); width 25.5in (65cm); depth 24in (61cm)

\$2,000 - 3,000

161^W

ATTRIBUTED TO DONALD DESKEY (1894-1989)

Coffee Table

circa 1935

glass, chromed metal, zebrawood

height 16in (41cm); diameter 42in (107cm)

\$2,000 - 3,000

Provenance

Thanks for the Memories, Los Angeles, California

162^W

ALBERT IRVIN (1922-2015)

Blue Junction

oil on canvas

signed 'Irvin' and titled 'Blue Junction' on stretcher

height 79 1/2in (202cm); width 70in (178cm)

\$4,000 - 6,000

Provenance

Private Collection, Santa Barbara, California

163^W

PIET HEIN EEK (BORN 1967)

Bench

circa 2012

from the 'Waste' series, reclaimed steel

height 18 3/4in (48cm); width 43 1/4in (110cm); depth 16in (41cm)

\$2,000 - 3,000

164

SALVIATI & CO. (FOUNDED 1859)

'Eulalia' Vase

circa 1985

blown glass with applied glass band

inscribed 'Salvati'

height 13 1/4in (33.5cm)

\$1,000 - 1,500

165^{WY}

GIUSEPPE SCAPINELLI (1891-1982)

Desk with Floating Top

circa 1960

caviuna wood and glass

height 31in (79cm); width 58in (147cm); depth 30in (76cm)

\$2,500 - 3,500



160

160

161



162



163



164

165

166

ERMANNO NASON (BORN 1928)

Gallinella

executed by Ermanno Nason, circa 1988

blown and applied glass, signed 'E. Nason'

height 11 1/4in (28cm); width 8in (20cm); depth 3 1/2in (8cm)

\$2,000 - 3,000

167

ANTONIO DA ROS (BORN 1936)

Fish

1972

for Cenedese, sommerso glass, signed 'Cenedese 1972 Murano'

height 4 3/8in (11cm); length 13in (33cm)

\$3,500 - 4,500

Provenance

Private Collection, California



166



167

168

ANTONIO DA ROS (BORN 1936)

Murrine Vase

circa 1963

for Cenedese, glass, murrines

height 5 3/3in (14.5cm); length 7 1/2in (19cm)

\$1,000 - 1,500

169

GIUSTO TOSO (BORN 1939)

Sfera Psichedelica

circa 1970

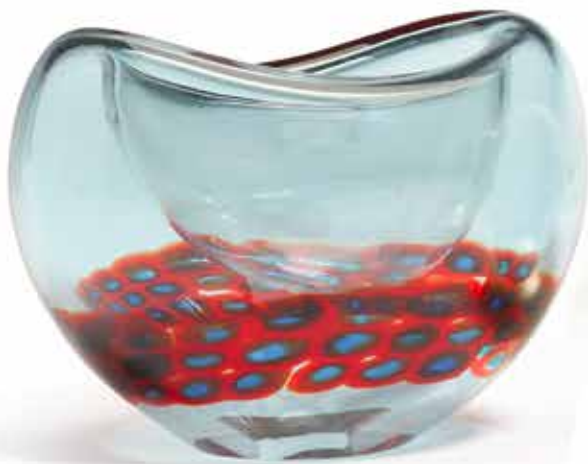
for Fratelli Toso, internally decorated glass

diameter 7in (17cm)

\$2,000 - 3,000

Provenance

Private Collection, California



168



169

170

FULVIO BIANCONI (1915-1996)

Fazzoletto Vase

circa 1950

for Venini, filigrana and zanfirico glass

three-line acid stamp "venini murano ITALIA"

height 10 1/2in (26.6cm)

\$1,000 - 1,500

Provenance

Private Collection, California

171

ALBERTO SEGUSO

Pennellate Vase

1947-1954

for Seguso & C., blown glass, bearing foil label

height 10 3/4in (28.6cm)

\$1,500 - 2,000

Provenance

Private Collection, California

172

ERCOLE BAROVIER (1889-1974)

Efeso Vase

circa 1964

for Barovier & Toso, clear glass with cobalt blue metal oxides and air

bubble decoration

height 6 3/4in (17cm); diameter 5 1/4in (13cm)

\$1,500 - 2,000

Provenance

Private Collection, California



170



171



172

173

FULVIO BIANCONI (1915-1996)

Forato Vase

for Venini, 1946-1965

model 4539 red catalog

blown glass

acid etched three line signature 'venini murano ITALIA'

height 7 1/2in (19cm); width 9 5/8in (24.5cm)

\$1,000 - 1,500

Literature

Marino Barovier and Carl Sonogo, 'Fulvio Bianconi at Venini', Skira, 2015, page 247, design illustrated

174

FLAVIO POLI (1900-1984)

Valva Vase

circa 1956

for Seguso Vetri D'Arte, model 11485, Sommerso glass, together with a copy of a Barry Friedman Ltd. invoice

height 7 1/4in (18cm)

\$2,500 - 3,500

Provenance

Barry Friedman Ltd., New York

Collection of Martin and Lee Rubin, Cave Creek, Arizona

175

FLAVIO POLI (1900-1984)

Valva Vase

circa 1990

shape 9814, designed circa 1954, later production Vetreteria Artistica Archimede Seguso, blue, ruby, purple and clear (rosso rubino blu)

glass

height 9in (23cm)

\$1,000 - 1,500

Provenance

Collection of Martin and Lee Rubin, Cave Creek, Arizona



173



174



175

176^W

PAUL EVANS (1931-1987)

Wall Mounted Cityscape Console

1975

for Directional USA, walnut

with single drawer opening to reveal a fitted interior

height 8 1/8in (20cm); width 48 1/16in (122cm); depth 14 1/16in (35cm)

\$3,000 - 5,000

177^W

PAUL EVANS (1931-1987)

Cityscape Dining Set

circa 1975

for Directional USA, burlled walnut, upholstery

comprising a dining table with two leaves, six side chairs, two armchairs

table tagged 'Paul Evans'

height of dining table 29 1/2in (74cm); width without leaves 64 1/8in

(162cm); depth 38in (96cm); height of armchair 36 15/16in (93cm);

width 23 3/4in (60cm); depth 21in (53cm); height of side chair 36 1/4in

(92cm); width 19 1/8in (48cm); depth 23 1/2in (59cm)

\$4,000 - 6,000



176

177

177



177

178^W

VLADIMIR KAGAN (1927-2016)

Three Piece Omnibus Sectional Sofa

circa 1970

acrylic, upholstery

*height of sections 26 3/4in (67cm); height of chaise 35 1/4in (89cm);
lengths of sections 73 1/4in and 90 1/2in (186cm and 229cm); length
of chaise 74in (187cm)*

\$4,000 - 6,000

179^W

VLADIMIR KAGAN (1927-2016)

Coffee Table

circa 1975

acrylic, walnut

height 15 5/8in (39cm); width 43in (109cm); depth (109cm)

\$1,000 - 1,500

180

PHILIP (1907-1987) AND KELVIN LAVERNE (BORN 1937)

Wall Panels

circa 1965

perforated brass

height 95 1/16in (241cm); width approximately 120in (304cm)

\$4,000 - 6,000

181^W

MAURICE BAILEY

Executive Desk

circa 1965

for Monteverdi-Young, walnut, chromed steel

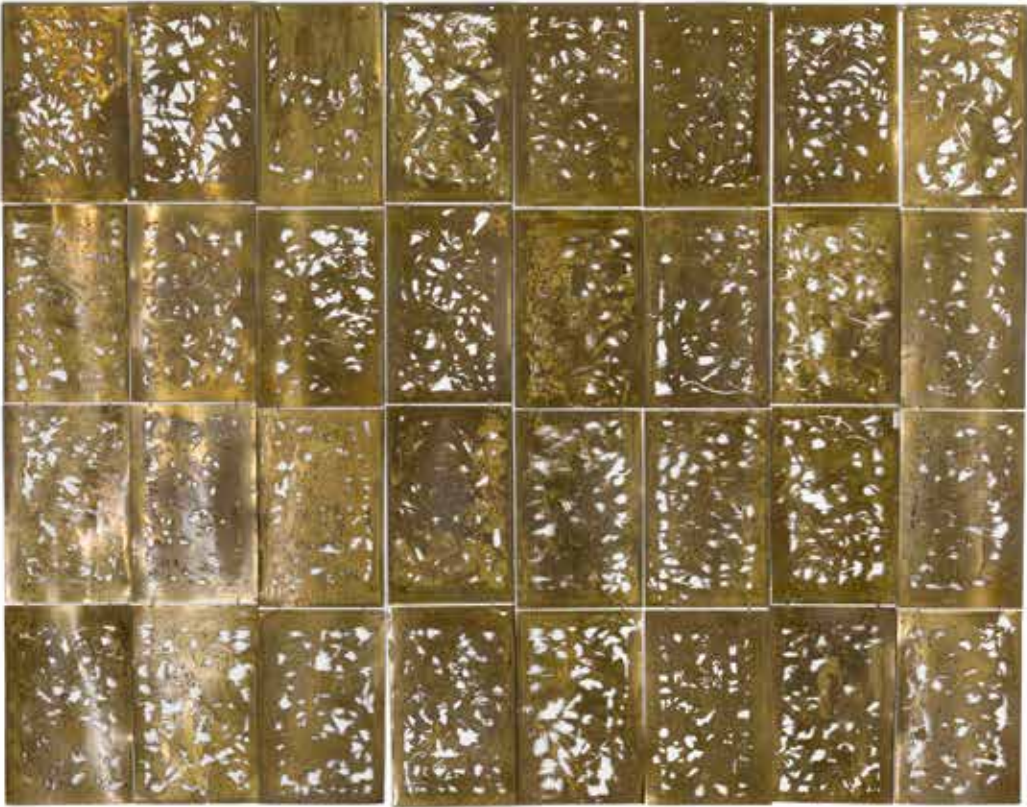
height 28 1/4in (71cm); width 98 3/4in (250cm); depth 36in (91cm)

\$3,000 - 5,000



178

179



180



181

182

VICKE LINDSTRAND (1904-1983)

Trees in Fog Vase

1955-1956

for Kosta, internally decorated glass, engraved 'Vicke Lindstrand
KOSTA LU 2005'

height 11 1/4in (28cm); diameter 5 5/8in (14cm)

\$1,000 - 1,500



182

183

TONY ZUCCHERI (1937-2008)

Spacchi Vase

circa 1985

produced by Barovier e Toso, glass, inscribed 'barovier & toso murano
tt sh'

height 11 1/2in (28.5cm)

\$3,000 - 5,000

Provenance

Private Collection, California



183

184

ARNOLDO TOSO (1939-2017)

Kiku Nero Vase

designed by Ermanno Toso for Fratelli Toso circa 1960, glass, floral
murrines, bearing Fratelli Toso paper label with inscribed title, and silver
foil label

height 14 5/8in (37cm)

\$8,000 - 12,000

Provenance

Private Collection, California



185^W

JOHN DICKINSON (1920-1982)

Pair of Custom Slipper Chairs

circa 1970, faux leather upholstery

height 28 1/2in (72cm); length 22 1/2in (57cm); depth of seat 20in (50cm)

\$4,000 - 6,000

Provenance

Dr. Leo and Marlys Keoshian, Palo Alto, California

Literature

'Una Voglia Di Bianco: Dalla California', Casa Vogue, April 1976, p.

118-120 for illustrations of chairs in-situ

Erica Brown, 'Precision with Playfulness', New York Times Magazine,

July 8, 1979, p. 53 for an illustration of chairs in-situ

186^W

JOHN DICKINSON (1920-1982)

Custom Side Table

circa 1970

marble

height 16in (40cm); length 17in (43cm); depth 11in (27cm)

\$6,000 - 9,000

Provenance

Dr. Leo and Marlys Keoshian, Palo Alto, California

187

JOHN DICKINSON (1920-1982)

Table Lamp

circa 1970

model 117; porcelain, enamel and brass

height 33in (83cm); diameter of shade 21in (53cm)

\$5,000 - 7,000

Provenance

Dr. Leo and Marlys Keoshian, Palo Alto, California

Literature

'Una Voglia Di Bianco: Dalla California', Casa Vogue, April 1976, p.

120 for an illustration of this lamp model in-situ

Erica Brown, 'Precision with Playfulness', New York Times Magazine,

July 8, 1979, p. 53 for an illustration of this lamp model in-situ

Diane Dorrans Saeks, 'San Francisco A Certain Style', Chronicle

Books, 1989, p. 52-55 lamp model illustrated in John Dickinson's

Firehouse residence

188^W

JOHN DICKINSON (1920-1982)

Two Custom End Tables

circa 1970

stainless steel, brass, and vinyl-trimmed canvas

height 24in (60cm); length 35in (88cm); depth 21 1/2in (54cm)

\$6,000 - 8,000

Provenance

Dr. Leo and Marlys Keoshian, Palo Alto, California

Literature

'Precision with Playfulness', New York Times Magazine, July 8, 1979,

p. 53 for an illustration of this table model in-situ



185

186

185

189^W

JOHN DICKINSON (1920-1982)

Custom Parsons Style Sectional Sofa

circa 1970

canvas and faux leather

height 30in (76cm); length 114in (289cm); depth of chaise 88in (223cm)

\$6,000 - 8,000

Provenance

Dr. Leo and Marlys Keoshian, Palo Alto, California

Literature

'Una Voglia Di Bianco: Dalla California', Casa Vogue, April 1976, p.

118 for an illustration of sofa in-situ

Erica Brown, 'Precision with Playfulness', New York Times Magazine,

July 8, 1979, p. 53 for an illustration of sofa in-situ

190^W

JOHN DICKINSON (1920-1982)

Pair of Custom Cube Ottomans

circa 1970

leather upholstery

height 17in (43cm); length 17in (43cm); depth 17in (43cm)

\$3,000 - 5,000

Provenance

Dr. Leo and Marlys Keoshian, Palo Alto, California

Literature

Erica Brown, 'Precision with Playfulness', New York Times Magazine,

July 8, 1979, p. 53 for an illustration of ottomans in-situ

191

JOHN DICKINSON (1920-1982)

Table Lamp

circa 1970

model 117; porcelain, enamel and brass

height 33in (83cm); diameter of shade 21in (53cm)

\$5,000 - 7,000

Provenance

Dr. Leo and Marlys Keoshian, Palo Alto, California

Literature

'Una Voglia Di Bianco: Dalla California', Casa Vogue, April 1976, p.

120 for an illustration of this lamp model in-situ

Erica Brown, 'Precision with Playfulness', New York Times Magazine,

July 8, 1979, p. 53 for an illustration of this lamp model in-situ

Diane Dorrans Saeks, 'San Francisco A Certain Style', Chronicle

Books, 1989, p. 52-55 lamp model illustrated in John Dickinson's

Firehouse residence



192^W

JOHN DICKINSON (1920-1982)

Pair of Custom Light Panels

circa 1970

lacquered wood

height 47 1/2in (120cm); width 30in (76cm); depth 5in (12cm)

\$5,000 - 7,000

Provenance

Dr. Leo and Marlys Keoshian, Palo Alto, California



192

193^W

JOHN DICKINSON (1920-1982)

Pair of Custom Light Panels

circa 1970

lacquered wood

height 47 1/2in (120cm); width 30in (76cm); depth 5in (12cm)

\$5,000 - 7,000

Provenance

Dr. Leo and Marlys Keoshian, Palo Alto, California

illustrated online



192



194



195



196



197

194

ANZOLO FUGA (1914-1998)

Bandiere Vase

circa 1955

for A.V.E.M., polychrome glass canes, bearing A.V.E.M. paper label
height 18in (46cm)

\$3,000 - 5,000

Provenance

Private Collection, California

195

ANZOLO FUGA (1914-1998)

A Murrine e A Canne

circa 1962

for A.V.E.M., glass, murrines
height 13 5/8in (34.5cm)

\$3,000 - 5,000

Provenance

Private Collection, California

Literature

Rosa Barovier Mentasti, 'Anzolo Fuga: Murano Glass Artist, Designs for A.V.E.M.' Acanthus Press, this technique is illustrated on page 178

196^W

JOHN DICKINSON (1920-1982)

Custom Quarry Edge Console Table

circa 1970

marble

height 30 1/4in (76cm); length 36in (91cm); depth 16in (40cm)

\$7,000 - 10,000

Provenance

Dr. Leo and Marlys Keoshian, Palo Alto, California

Literature

'Una Voglia Di Bianco: Dalla California', Casa Vogue, April 1976, p. 123 for an illustration of console table in-situ
Erica Brown, 'Precision with Playfulness', New York Times Magazine, July 8, 1979, p. 53 for an of console table in-situ

197^W

JOHN DICKINSON (1920-1982)

Custom Quarry Edge Console Table

circa 1970

marble

height 30 1/4in (76cm); length 36in (91cm); depth 16in (40cm)

\$7,000 - 10,000

Provenance

Dr. Leo and Marlys Keoshian, Palo Alto, California

Literature

'Una Voglia Di Bianco: Dalla California', Casa Vogue, April 1976, p. 123 for an illustration of console table in-situ
Erica Brown, 'Precision with Playfulness', New York Times Magazine, July 8, 1979, p. 53 for an of console table in-situ

198^W

JOHN DICKINSON (1920-1982)

Custom Dining Table

circa 1970

carved and lacquered bleached oak

height 30in (76cm); length 83 1/2in (212cm); width 41 3/4in (106cm)

\$6,000 - 8,000

Provenance

Dr. Leo and Marlys Keoshian, Palo Alto, California

Literature

'Una Voglia Di Bianco: Dalla California', Casa Vogue, April 1976, p. 123 for an illustration of dining table in-situ
Erica Brown, 'Precision with Playfulness', New York Times Magazine, July 8, 1979, p. 53 for an illustration dining table in-situ

199^W

JOHN DICKINSON (1920-1982)

Set of Six Custom Armchairs

after a circa 1935 design by Hammond Kroll, these circa 1970

carved and bleached oak with canvas pillows

height 32 1/4in (81cm); width 23 1/2in (59cm); depth 19in (48cm)

\$12,000 - 18,000

Provenance

Dr. Leo and Marlys Keoshian, Palo Alto, California



198

199

200

JOHN DICKINSON (1920-1982)

Custom Stonehenge Table Lamp

circa 1970

white painted wood

height of base 13 1/4in (33cm); length of base 12in (30cm); depth of base 8in (20cm)

\$4,000 - 6,000

Provenance

Dr. Leo and Marlys Keoshian, Palo Alto, California

Literature

Jordan Kushins, 'A Time Capsule', California Home + Design, Summer 2016, p. 37 for illustrations of lamp in-situ

201^W

JOHN DICKINSON (1920-1982)

Pair of Custom Wall Mounted Nightstands

circa 1970

lacquered plastered wood

height 9 1/2in (24cm); width 29 7/8in (76cm); depth 24in (61cm)

\$2,500 - 3,500

Provenance

Dr. Leo and Marlys Keoshian, Palo Alto, California

Literature

Erica Brown, 'Precision with Playfulness', New York Times Magazine, July 8, 1979, p. 53 for an illustration of nightstands in-situ



200

201



202

202^W

JOHN DICKINSON (1920-1982)

Custom Bed

circa 1970

carved and lacquered wood

height 54 1/2in (138cm); length 98in (248cm); width 65 1/2in (166cm)

\$6,000 - 8,000

Provenance

Dr. Leo and Marlys Keoshian, Palo Alto, California

Literature

Jordan Kushins, 'A Time Capsule', California Home + Design, Summer 2016, p. 37 for illustrations of bed in-situ

203

JOHN DICKINSON (1920-1982)

Custom Stonehenge Table Lamp

circa 1970

white painted wood

height of base 13 1/4in (33cm); length of base 12in (30cm); depth of base 8in (20cm)

\$4,000 - 6,000

Provenance

Dr. Leo and Marlys Keoshian, Palo Alto, California

Literature

Jordan Kushins, 'A Time Capsule', California Home + Design, Summer 2016, p. 37 for illustrations of lamp in-situ



201

203

204^W

JOHN DICKINSON (1920-1982)

Console Table

circa 1970

model 116, lacquered wood

height 30in (76cm); length 42in (106cm); depth 13in (33cm)

\$10,000 - 15,000

Provenance

Dr. Leo and Marlys Keoshian, Palo Alto, California

Literature

Jordan Kushins, 'A Time Capsule', California Home + Design, Summer 2016, p. 32-33 for illustrations of console in-situ

205^W

JOHN DICKINSON (1920-1982)

Console Table

circa 1970

model 116, lacquered wood

height 30in (76cm); length 42in (106cm); depth 13in (33cm)

\$10,000 - 15,000

Provenance

Dr. Leo and Marlys Keoshian, Palo Alto, California

Literature

Jordan Kushins, 'A Time Capsule', California Home + Design, Summer 2016, p. 32-33 for illustrations of console in-situ



204



205

206^W

JOHN DICKINSON (1920-1982)

Armoire

circa 1970

for Randolph & Hein, white washed oak, metal and suede
height 83in (210cm); width 36in (91cm); depth 21 1/4in (53cm)

\$3,000 - 5,000

Provenance

Dr. Leo and Marlys Keoshian, Palo Alto, California

207^W

JOHN DICKINSON (1920-1982)

Armoire

circa 1970

for Randolph & Hein, white washed oak, metal and suede
height 83in (210cm); width 36in (91cm); depth 21 1/4in (53cm)

\$3,000 - 5,000

Provenance

Dr. Leo and Marlys Keoshian, Palo Alto, California



206



207

208

JOHN DICKINSON (1920-1982)

Custom Stonehenge Table Lamp

circa 1970

white painted wood

height of base 13 1/4in (33cm); length of base 12in (30cm); depth of base 8in (20cm)

\$4,000 - 6,000

Provenance

Dr. Leo and Marlys Keoshian, Palo Alto, California

Literature

Jordan Kushins, 'A Time Capsule', California Home + Design, Summer 2016, p. 37 for illustrations of lamp in-situ

209^W

JOHN DICKINSON (1920-1982)

Custom Hoofed Side Table

circa 1970

painted decoration by Carole Lansdown,

painted wood

height 21in (53cm); width 20in (50cm); depth 20in (50cm)

\$8,000 - 12,000

Provenance

Dr. Leo and Marlys Keoshian, Palo Alto, California

Literature

Erica Brown, 'Precision with Playfulness', New York Times Magazine, July 8, 1979, p. 52 for an illustration of table in-situ
Diane Dorrans Saeks, 'Bathrooms', Chronicle Books, 1998, p. 25 for an illustration of table in-situ

The offered lot is an early custom version of model 114 made in wood, but ultimately Dickinson went on to produce the model in plaster

210^W

JOHN DICKINSON (1920-1982)

Custom Chaise Longue

circa 1970

grey wool upholstery with coordinating blanket

height 30in (76cm); length 36in (91cm); depth 57in (144cm)

\$2,500 - 3,500

Provenance

Dr. Leo and Marlys Keoshian, Palo Alto, California

Literature

Refer online



208

209



211

210

211^W

JOHN DICKINSON (1920-1982)

Custom "Ruined" Column Cabinet
circa 1970
painted wood
height 90 1/2in (229cm); length 19in (48cm);
depth 19in (48cm)

\$6,000 - 9,000

Provenance

Dr. Leo and Marlys Keoshian, Palo Alto,
California

Literature

'Bed-Bath-Study', House & Garden, July
1975, p. 63 for an illustration of "ruined"
column in-situ
Erica Brown, 'Precision with Playfulness',
New York Times Magazine, July 8, 1979, p.
52 for an illustration of "ruined" column in-situ
Diane Dorrans Saeks, 'Bathrooms', Chronicle
Books, 1998, pp. 25 for an illustration of
table in-situ

A whimsical storage piece inspired by
ancient columns

212^W

JOHN DICKINSON (1920-1982)

Custom Klismos Chair
circa 1970
white washed oak, Naugahyde, and wool
height 36 1/2in (92cm); length 19in (48cm);
depth of chair 17in (43cm)

\$2,000 - 3,000

Provenance

Dr. Leo and Marlys Keoshian, Palo Alto,
California

Literature

Erica Brown, 'Precision with Playfulness',
New York Times Magazine, July 8, 1979, p.
53 for an illustration of chair in-situ

213^W

MODERN

Mirror
circa 1970
glazed tile mosaic and giltwood
height 31 1/4in (79cm); width 24 3/4in
(62cm); depth 1 1/4in (3cm)

\$800 - 1,200

Provenance

Dr. Leo and Marlys Keoshian, Palo Alto,
California

Literature

'Bed-Bath-Study', House & Garden, July
1975, p. 63 for an illustration of the mirror
in-situ
Erica Brown, 'Precision with Playfulness',
New York Times Magazine, July 8, 1979, p.
52 for an illustration of the mirror in-situ
Diane Dorrans Saeks, 'Bathrooms', Chronicle
Books, 1998, p. 25 for an illustration of table
in-situ

The offered lot was selected and gifted by
John Dickinson to the Keoshian's



213

214^W

JOHN DICKINSON (1920-1982)

Custom Writing Desk
circa 1970
painted wood, metal and Naugahyde
height 31 1/4in (79cm); length 71in (180cm);
depth 30in (76cm)

\$4,000 - 6,000

Provenance

Dr. Leo and Marlys Keoshian, Palo Alto,
California

Literature

Refer online



212



214

215

VASA VELIZAR MIHICH (BORN 1933)

Untitled (Four Columns)

1981

laminated cast acrylic

one column signed and dated 'Vasa 81'
(along the edge)

each column 22 5/8in x 4 3/4in x 2 1/2in
(57.5cm x 12.2cm x 6.4cm)

\$2,000 - 3,000

216^W

MICHAEL TAYLOR (1926-1986)

Coffee Table and Side Table

1985

travertine marble

height of coffee table 16in (41cm); width 60in
(153cm); depth 16in (41cm); height of side
table 21in (54cm); diameter 30in (77cm)

\$2,500 - 3,500

Provenance

Property from a Michael Taylor Commission,
Orinda, California

217^W

MICHAEL TAYLOR (1926-1986)

Pair of Benches

1985

travertine marble, chenille upholstery

height of each 18in (46cm); width 45in
(115cm); depth 20in (51cm)

\$2,500 - 3,500

Provenance

Property from a Michael Taylor Commission,
Orinda, California



215

217

216

218

DALE CHIHULY (BORN 1941)

Basket Drawing
watercolor and acrylic paint on paper, signed
'Chihuly' lower center
height 46 1/2in (118cm); width 34 3/8in
(87cm); depth 2in (5cm)

\$2,000 - 3,000



218

219

MICHAEL TAYLOR (1926-1986)

Custom Shell Table Lamp
1985
cream painted plaster
height overall 18in (46cm); width of base 8in
(20cm); depth of base 8in (20cm)

\$1,500 - 1,800

Provenance

Property from a Michael Taylor Commission,
Orinda, California

220^W

MICHAEL TAYLOR (1926-1986)

Desk
1985
travertine
height 29in (74cm); width 52in (132cm);
depth 27in (69cm)

\$1,500 - 2,000

Provenance

Property from a Michael Taylor Commission,
Orinda, California



216



219

220



217

221^W

BRUCE MCQUILKIN (ACTIVE 1970S)

Rocking Chair
walnut, leather
unsigned

height 40 3/4in; width 22in; depth 40 1/2in

\$1,000 - 1,500

222^W

BILL W. SANDERS

Chopping Block on Wheels
circa 1964

butcher block, chromed metal, aluminum,
rubber

height 29in (74cm); length 44 1/2in (113cm);
depth 34in (87cm)

\$1,200 - 1,800

Literature

Pasadena Art Museum, California Design/
Nine, Pasadena, 1965, p. 112 of exhibition
book for a similar example

223^W

DAVID CRESSEY (1916–2013)

Planter

circa 1965

for Architectural Pottery, glazed terracotta
height 18 1/2in; diameter 12 1/4in

\$1,000 - 1,500



221



222



223

224^W

AMERICAN STUDIO

Butterfly Table

circa 1975

walnut

height 22 3/4in (57cm); length 85 3/4in
(217cm); depth 26in (66cm)

\$2,500 - 3,500

225^W

BRUCE MCQUILKIN (ACTIVE 1970S)

Pair of Armchairs

walnut, suede

each incised with letters and numbers

height 30in; width 24 3/8; depth 20 1/2in

\$1,200 - 1,800

226^W

RAUL CORONEL (BORN 1926)

Planter

1963

earthenware, incised 'Coronel 63'

height 11in (28cm); diameter 23 1/4in (59cm)

\$1,000 - 1,500



224

225

226

225

227

BEATRICE WOOD (1893-1998)

Part Service

two footed bowls and two plates, blue glazed terracotta, each signed
'BEATO'

*heights 1 3/16in to 2 5/8in (2cm to 6cm); diameters 5 3/4in to 10in
(14cm to 25cm)*

\$1,200 - 1,800



228

BEATRICE WOOD (1893-1998)

Footed bowl with Faces

lustre and blue volcanic glazed terracotta, signed 'BEATO' and 'BWTF
470'

height 5 1/8in (13cm); diameter 6in (15cm)

\$1,000 - 2,000

Provenance

Prominent Bay Area Collector



229

BOB STOCKSDALE (1913-2003)

Group of Three Bowls

1979-1980

Monterey cypress and hedge maple, incised artist's marks to
underside of each

diameters 7in (18cm) to 9 1/2in (24cm)

\$1,000 - 1,500



230

DOUG AYERS (ACTIVE LATE 20TH CENTURY)

Two Vessels

1994, 2013

turned wood, one signed 'D.AYERS MAPLE 1-24-13', the other
'D.AYERS 10-13-94' (wood inscription obscured)

heights 7 7/8in and 5 1/2in (20cm and 14cm)

\$1,000 - 1,500



231

EDWARD MOULTHROP (1916-2003)

Donut Vessel and Platter

vessel circa 1980, platter circa 1965

figured tulipwood and pine, the first inscribed 'MOULTHROP FIGURED
TULIPWOOD', the other with branded mark, inscribed 'WHITE PINE
MOULTHROP'

*height of vessel 3 3/8in (8.5); diameter 5 3/4in (14.4cm); diameter of
platter 18 1/2in (47cm) (2)*

\$3,000 - 5,000



232

EDWARD MOULTHROP (1916-2003)

Doughnut Vase

circa 1980

figured tulipwood, with artist's monogram and inscribed 'ED
MOULTHROP FIGURED TULIPWOOD LIRIODENDRON TULIPIFERA
307801'

height 9 1/2in (24cm); width 9 1/4in (23cm)

\$2,000 - 4,000

Provenance

Collection of Drs. John and Karen Woodward



233^W

SAM MALOOF (1916-2009)

Three Seat Settle

circa 1968

walnut

branded 'designed made MALOOF california'

height 33 1/2in (86cm); width 75 1/2in (192cm) depth 25in (64cm)

\$10,000 - 15,000



234^W

SAM MALOOF (1916-2009)

Three Seat Settle

circa 1968

walnut

branded 'designed made MALOOF california'

height 33 1/2in (86cm); width 75 1/2in (192cm) depth 25in (64cm)

\$10,000 - 15,000



235^W

SAM MALOOF (1916-2009)

Rocking Chair

circa 1968

walnut, upholstery

branded 'MALOOF designed made' and inscribed 'RUDOLPH 50.70'
height 45in (114.5cm); width 28in (71.5cm); depth 42in (107cm)

\$10,000 - 15,000



236^W

SAM MALOOF (1916-2009)

Rare Double Rocking Chair

2006

walnut

branded 'No.13 2006 Sam Maloof d.f.a risd M.J. L.W.'

height 47 1/2in (120cm); width 42 1/8in (106cm); depth 45 7/8in (116cm)

\$30,000 - 50,000

The present lot is the first known example of this rare model to come to auction



237

DALE CHIHULY (BORN 1941)

Two Part Seaform

1999

blown glass, signed 'Chihuly 1999'

height of first 8 1/4in (21cm); width 20in (51cm); depth 8 1/2in (22cm);

height of second 8 1/2in (22cm); length 20 3/4in (52.5cm); depth 13

1/2in (34cm)

\$5,000 - 8,000

The offered lot is being sold to benefit the Greyfoot Rescue and Sanctuary

239^W

JOHN CEDERQUIST (BORN 1946)

Big Kanji

2007-2010

from the Heavenly Victory series, birch plywood, various hardwoods,

pigmented epoxy resin, aniline dye, litho inks

height 70 1/2in (179cm); width 53in (135cm); depth 21 1/2in (54cm)

\$10,000 - 15,000

238^W

ISAO HOSOE (1942-2015)

Scalene Triangle Table

1991

for Cassina, leather, glass

height 29in (74cm); width 93in (236cm); depth 62in (158cm)

\$3,000 - 5,000



237

238



240

PATTI WARASHINA (BORN 1940)

Redstroke

1988

glazed earthenware, incised signature 'Patti Warashina'
height 13 1/4in (33cm); width 13 1/4in (33cm); depth 4 5/8in (11cm)

\$1,500 - 2,000

Provenance

Prominent Bay Area Collector



240

241

AKIO TAKAMORI (1950-2017)

Venus and Mars

glazed ceramic teapot, signed 'Akio'
height 9in (22cm); width 11 1/2in (29cm)

\$2,000 - 3,000

Provenance

Prominent Bay Area Collector

A similar example is in the Fine Arts Museum of San Francisco, but with a bird finial



241

242^W

MARC NEWSON (BORN 1963)

Embryo Chair

circa 1988

for Idée, Neoprene, aluminum

height 31in (79cm); width 34in (86cm); depth 33in (84cm)

\$3,000 - 5,000

243^W

MARC NEWSON (BORN 1963)

Embryo Chair

circa 1988

for Idée, Neoprene, aluminum

height 31in (79cm); width 34in (86cm); depth 33in (84cm)

\$3,000 - 5,000

244^W

MARC NEWSON (BORN 1963)

Embryo Chair

circa 1988

for Idée, Neoprene, aluminum

height 31in (79cm); width 34in (86cm); depth 33in (84cm)

\$3,000 - 5,000



242

243

244

245

JACK EARL (BORN 1934)

Salt and Pepper of the Earth, Before + After,
Upon Each Dog a Little Rain Must Fall
1989 and 1991

glazed ceramic, found objects, the first with title and 'JACK OHIO
EARL 199N', the second signed 'Jack Earl 1989' the underside
incised 'NOT LIKELY', the third with incised title and 'JACK EARL
1991'

heights 5 1/4in to 6 3/4in (13cm to 17cm)

\$2,500 - 3,500

Provenance

Prominent Bay Area Collector



246

RICHARD NOTKIN (BORN 1948)

Double Cooling Towers Teapot (Variation #15)
1984
stoneware, incised signature 'Notkin 1984'
height 6in (15.2cm)

\$2,500 - 3,500

Provenance

Prominent Bay Area Collector

Notkin's images were not of nature but of political protest, specifically Cold War tensions, nuclear proliferation and human right violations, exemplified in the Cooling Towers Teapots, a series begun in 1983

247

RICHARD NOTKIN (BORN 1948)

Cube Skull Teapot
1988
stoneware, incised signature 'Notkin 1988'
height 5 3/4in (14.6cm)

\$1,500 - 2,500

Provenance

Prominent Bay Area Collector

248

RICHARD NOTKIN (BORN 1948)

Square Land Teapot
1983
from the Yixing series, stoneware, incised signature and date
height 3 1/2in (9cm); width 7 1/4in (18.4cm)

\$1,800 - 2,500

Provenance

Prominent Bay Area Collector

249

RICHARD NOTKIN (BORN 1948)

Stacked Art Crates Mug
1982
stoneware, incised signature 'Notkin 1982'
height 4 1/2in (11.5cm)

\$1,000 - 1,500

Provenance

Prominent Bay Area Collector





250



251

250

KYOHEI FUJITA (1921-2004)

Red and White Plum Blossoms (Covered Box No 2)

1987

mold-blown glass with silver and gold foil inclusions, signed 'Kyohei Fujita'

height 3 1/4in (8.3cm); width 3 5/8in (9.2cm)

\$1,500 - 2,500

Provenance

Prominent Bay Area Collector

251

KYOHEI FUJITA (1921-2004)

Fujimefume (Covered Box)

1999

mold blown glass with metal foil inclusions

height 2 1/4in (5cm); width 4in (10cm)

\$1,200 - 1,800

Provenance

Collection of Martin and Lee Rubin, Cave Creek, Arizona

252^W

BJARNE MELGAARD (BORN 1967)

Kiesler Party Chair

circa 2007

chair model designed by Friedrich Kiesler for Wittmann

Möbelwerkstätten in 1936, original upholstery by Backhausen, Vienna,

tubular steel, upholstered

underside with Wittmann manufacturer's label

height 17in (43cm); length 80in (203cm); depth 48in (122cm)

\$10,000 - 15,000

Literature

'The Correal Life', Metropolis magazine, February 25, 2008 for an illustration of this lounge

Exhibited

'Bjarne Melgaard', Greene Naftali Gallery, New York, 2008

Created for an exhibition at Greene Naftali gallery, Bjarne Melgaard used a 1936 Friedrich Kiesler design which he upholstered in his underground subculture visions



253^W

JESUS BAUTISTA MORALES (1950-2015)

Bench

circa 1995

red and black granite

height 28in (71.5cm); width 52in (132cm); depth 11in (28cm)

\$5,000 - 8,000



254^W

DORA DE LARIOS (1933-2018)

Goddess I

Circa 1999

glazed stoneware and porcelain, on iron base

height of figure 61in (154cm); width 14 1/2in (36cm); depth 10 1/2in (26cm)

\$3,000 - 5,000



254

255^W

JUN KANEKO (BORN 1942)

Sculpture

1972

painted and glazed ceramic

height 32 3/4in (83cm); width 36 1/2in (92cm); depth 24 3/4in (62cm)

\$3,000 - 5,000



255

256

RICHARD ROYAL (BORN 1952)

Relationship Series

1995

blown glass, signed 'Richard Royal 1995'

height 24 3/4in (63cm)

\$1,500 - 2,000

Provenance

Private Collection, California



256

257

BENJAMIN MOORE (BORN 1952)

Two Part Palla Set

1995

blown glass, each piece signed 'Benjamin P. Moore © 1995'

height of first 20 1/2in (52cm); width 18 5/8in (47.4cm); height of second piece 20 7/8in (53cm)

\$1,000 - 1,500

The offered lot is being sold to benefit the Greyfoot Rescue and Sanctuary



257



258

DANA ZÁMEČNÍKOVÁ (BORN 1945)

Eruption of Etna

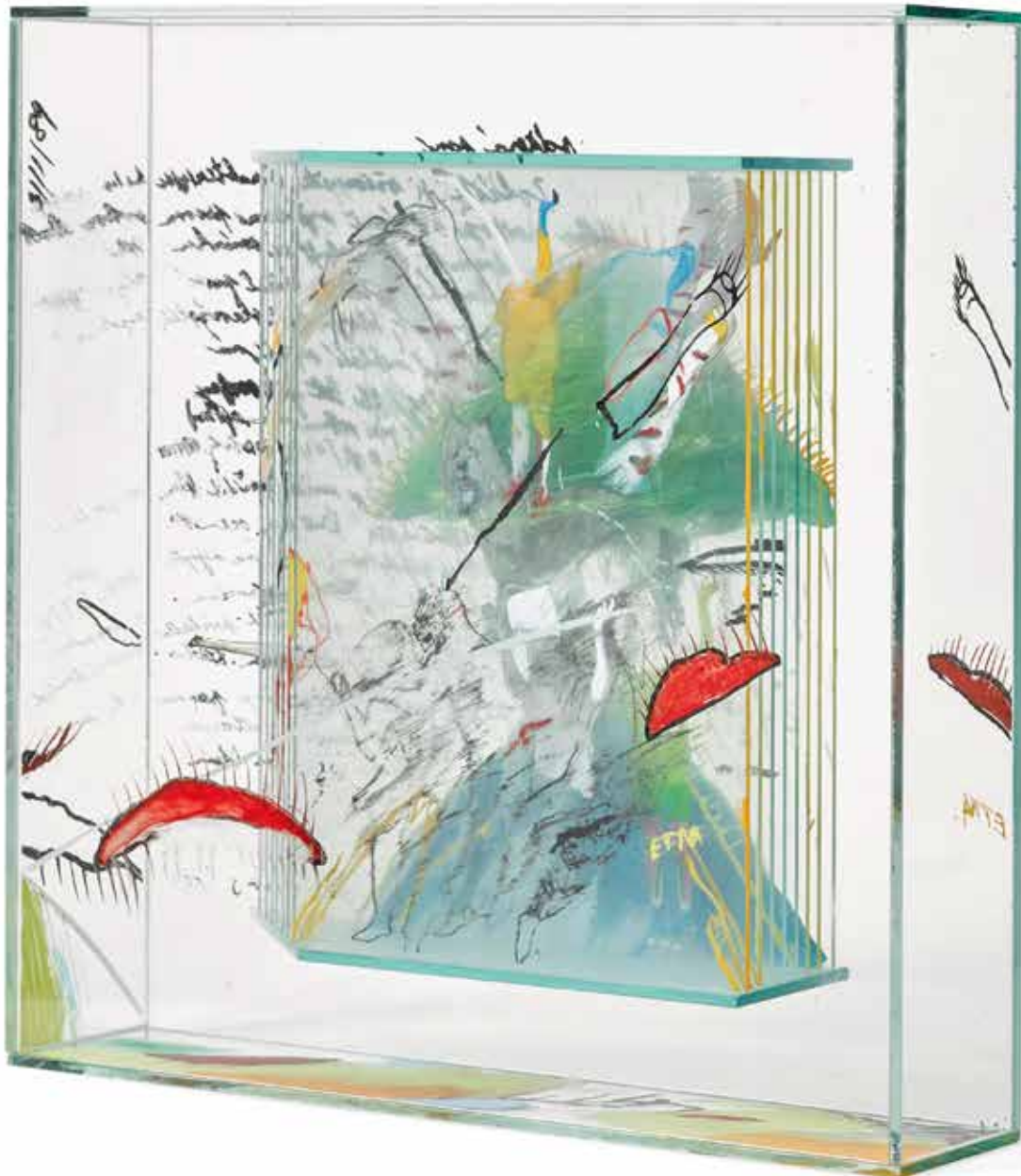
1989

cut, painted, etched and engraved plate glass, dated '3/11/89'
height 18 1/8in (46cm); width 18 1/8in (46cm); depth 3 7/8in (9cm)

\$1,500 - 2,000

Provenance

Prominent Bay Area Collector





259



260



259^W

DANTE MARIONI (BORN 1964)

Orange Pair

blown glass, signed 'marioni 95'

heights 33 1/8in and 14 1/2in (84cm and 37cm)

\$1,200 - 1,800

260^W

DANTE MARIONI (BORN 1964)

Blue Pair

1995

blown and applied glass, signed 'marioni 95'

heights 36 1/2in and 17 5/8in (92.7cm and 45.5cm)

\$1,500 - 2,000

Provenance

Collection of Martin and Lee Rubin,
Cave Creek, Arizona

261

DANTE MARIONI (BORN 1964)

Not So Black Goose Beak Pitcher

1994

blown glass

height 21in (53cm)

\$1,500 - 2,500

Provenance

Prominent Bay Area Collector

262^W

DANTE MARIONI (BORN 1964)

Gambo Vase

1997

blown glass, signed 'Marioni 97'

height 38in (97cm)

\$1,000 - 1,500

Provenance

Collection of Martin and Lee Rubin,
Cave Creek, Arizona



261



262

263^W

PIERRE CHARPIN (BORN 1962)

Pair of Slice Sofas with Two Poufs

circa 1996

produced 1998 for Cinova, multi colored upholstery

height of sofas 28in (71cm); width 34in (86cm); depth 62in (158cm);

height of poufs 15.1in (38cm); width 31in (79cm); 13in (33cm)

\$4,000 - 6,000

Provenance

Galerie Kreo, Paris





264

RICHARD TUTTLE (BORN 1941)

Smell of Trees

1990

edited by Kretzschmar Fine Arts, cast aluminum, porcelain, with light source

signed 'Richard Tuttle' and numbered '7/10' on the underside

19 x 21 x 15 in. (48.3 x 53.3 x 38.1 cm.)

\$5,000 - 7,000



265
ETTORE SOTTASS (1917-2007)
Yemen Vase
1996
for Venini, glass, signed 'Venini 96 Ettore Sottsass'
height 11 3/4in (29cm)

\$1,500 - 2,000

Provenance
Private Collection, California

266
PETER SHIRE (BORN 1947)
Menorah
1988
painted steel, anodized aluminum, chromium,
impressed 'SHIRE 1988 EPPS'
height 9in (23cm); length 12in (30cm)

\$1,800 - 2,500

267
PETER SHIRE (BORN 1947)
Angel
painted metal, unsigned
height 15in (38cm); width 12in (31cm); depth
7 3/4in (19cm)

\$1,000 - 1,500

Provenance
Prominent Bay Area Collector

268
PETER SHIRE (BORN 1947)
Sake Pot
1981
glazed earthenware, signed and dated
'SHIRE X 1981' on the bottom
height 4 3/4in (12cm); length 8 1/4in (21cm);
depth 7/8in (2.3cm)

\$1,500 - 2,500

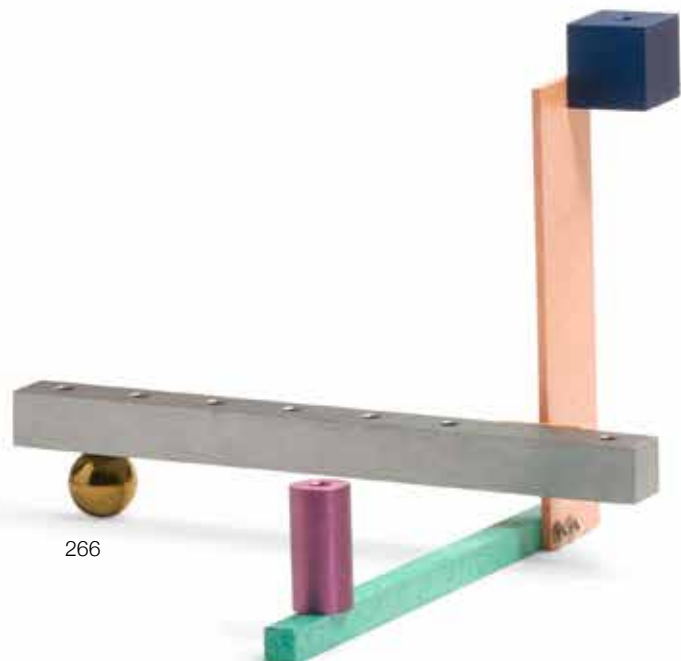
269
PETER SHIRE (BORN 1947)
Untitled
painted steel, unsigned
height 16in (41cm); width 15in (38cm); depth
6 1/2in (15cm)

\$2,000 - 3,000

Provenance
Prominent Bay Area Collector



265



266



267



268



269

270^W

ETTORE SOTTASS (1917-2007) AND MARCO ZANINI (BORN 1954)

Donau Bed and Nightstand

for Fritz Leitner

lacquered and laminated wood, together with a copy of the original invoice

height of daybed 42in (107cm); length 85in (216cm); width 40 3/4in (103.5cm); height of nightstand 18 3/4in (48in); width 31 1/2in (80cm); depth 17 3/4in (45.2cm)

\$1,800 - 2,500

Provenance

Modern Living, Los Angeles, California, 1989



270



270

271

DAVID LYNCH (BORN 1946)

Espresso Table

circa 1988

for Skank World, Los Angeles, stained birch and raw steel
signed in oil marker, stamped '0004' from an edition of 20 on metal
label from Skank World
height 13in (33cm); width 12in (30cm); depth 18 1/4in (46.5cm)

\$1,800 - 2,500

Provenance

Collection of Drs. John and Karen Woodward

David Lynch and Linda Gershon of the legendary Los Angeles design shop, Skank World, designed furniture in small editions in the late 1980s and early 1990s. The offered table came from that collaboration

272^W

VITO ACCONCI (1940-2017)

Name Calling Chair

1990

designed 1984, plywood, cherry, ebony, birch veneer
signed with applied studio tag on underside
height 48in (122cm); width 34in (87cm); depth 46in (117cm)

\$4,000 - 6,000



271



272



273^W

THERMAN STATOM (BORN 1953)

Wall Installation

circa 1995

plate glass with glass elements, paper, graphite, ink, and paint
height 60in (152cm); width 48in (121cm); depth 6in (15cm)

\$3,000 - 5,000

274

WILLIAM MORRIS (BORN 1957)

Stone Vessel

1981

blown glass, signed 'William Morris' and dated '1981'
height 11 1/2in (29.3cm); width 7in (17.9cm)

\$1,500 - 2,000

Provenance

Prominent Bay Area Collector

275

DALE CHIHULY (BORN 1941)

Midnight Blue Piccolo Venetian with Red Feather

1999

for Portland Press, blown and applied glass, signed 'PP99'
height 15 5/8in (39.7cm)

\$3,000 - 5,000

276

TAPIO WIRKKALA (1915-1985)

Pavoni Vase

1992

designed 1966, first produced in 1981 for Venini, filigrana glass signed
'venini tw 92' and bearing Venini clear sticker
height 12in (20.5cm)

\$2,000 - 3,000

Provenance

Collection of Martin and Lee Rubin, Cave Creek, Arizona

Literature:

Franco Deboni, 'Venini Glass: Catalogue 1921-2007', pl. 288 for a similar model



274



275



276



277



278

277

SONJA BLOMDAHL (BORN 1952)

Bowl

circa 1985

blown glass, signed 'Sonja B288'

height 8 1/4in (20cm); diameter 13 1/2in (34cm)

\$1,000 - 1,500

Provenance

Prominent Bay Area Collector

278

MARY ANN (TOOTS) ZYNSKY (BORN 1951)

Vessel

1982

spun glass and blown glass, signed 'Mary Ann Toots Zynsky 1982'

height 5 3/4in (14.6cm); diameter 7 3/4in (19.4cm)

\$1,500 - 2,000

Provenance

Prominent Bay Area Collector



279^W

JUDITH LASCOLA (BORN 1955)

Untitled

1996

glass, gold leaf, signed 'Judith LaScola 1996'

height 9in (22cm); width 28in (71cm); depth 8in (20cm)

\$1,500 - 2,000

280

RICHARD MARQUIS (BORN 1945)

Crazy Quilt Banded Cylinder

1979

lattimo glass and murrines, signature murrine '© 1979 MARQUIS',

inscribed '© 1979 Marquis #003B.C.'

height 11 3/4in (30cm)

\$2,500 - 3,500

Provenance

Private Collection, California



280

281

RICHARD MARQUIS (BORN 1945)

Two Teapot Goblets

1992

Zanfirico glass, each signed '© 1992 Marquis'

heights 9in (23cm) and 8 1/4in (21cm)

\$3,500 - 4,500

Provenance

Private Collection, California



281

282

RICHARD MARQUIS (BORN 1945)

Bell Jar #22

1990

glass, Vernon Kilns ceramic plate, enamel paint, each piece signed
'©1990 Marquis', two further inscribed 'BJ-22', the other 'EJ-22'

height 10in (25cm)

\$3,000 - 5,000

Provenance

Prominent Bay Area Collector



283

STEVEN WEINBERG (BORN 1954)

Puzzle No. 840201

cast glass, signed 'WEINBERG 840201'

height 7 1/8in (18cm); width 8 1/2in (21.6cm); depth 8 5/8in (22cm)

\$2,000 - 3,000



283

284

STEVEN WEINBERG (BORN 1954)

Cube No. 681001

cast glass, signed 'WEINBERG 681001'

height 7 7/8in (20cm); width 7 1/2in (19cm); depth 7 1/2in (19.2cm)

\$1,500 - 2,200



284

285

STEVEN WEINBERG (BORN 1954)

Cube No. 780206

cast glass, signed 'WEINBERG 780206'

height 5 1/4in (13.4cm); width 5 3/8in (13.7cm); depth 5 3/8in (13.7cm)

\$2,000 - 3,000

286

STEVEN WEINBERG (BORN 1954)

Puzzle No. 800301

cast glass, signed 'WEINBERG 800301'

3 1/4in (8.2cm) x 7 1/16in (8cm) x 7 1/16in (8cm)

\$1,000 - 1,500

287

STEVEN WEINBERG (BORN 1954)

Puzzle No. 820301

1982

cast and cut glass, inscribed 'WEINBERG 820301'

height 5 1/4in (13.3cm); width 5 1/2in (14cm); depth 5 1/4in (13.3cm)

\$1,500 - 2,000



285



286



287

288

MARIKO KUSUMOTO (BORN 1962)

Scientific Specimens of Insects

Father's Room

1996

mixed metals, stones, wax, found objects

heights 7 3/4in and 9 1/2in (19cm and 24cm); widths when open 10in and 10 3/4in (25cm and 27cm); depths 2in and 5in (5cm and 12cm)
(2)

\$2,000 - 3,000

Provenance

Prominent Bay Area Collector

Literature

Dona Meilach, 'Art Jewelry Today', Schiffer Publishing Ltd., 2003, page 172 for a photograph and description of 'Scientific Specimens of Insects'

Tim McCreight, 'Boxes & Lockets', Hand Books Press, 1999, page 21 and 108 for photographs of 'Father's Room'

'Father's Room' is illustrated on the artist's website



288

289

JOEL PHILIP MYERS (BORN 1934)

CFCLEARKSG 11

1988

blown, internally decorated and applied glass, inscribed 'JOEL PHILLIP MEYERS 1988'

height 16in (40cm)

\$1,200 - 1,800

Provenance

Prominent Bay Area Collector



289

290

DAVID J. SCHWARZ (BORN 1952)

Untitled

1989

blown and faceted glass, signed 'Dave Schwarz 7.21.89'

12in (30cm) x 14 1/2in (36cm) x 10in (25cm)

\$2,000 - 3,000

Provenance

Prominent Bay Area Collector



290

291

FLORA C. MACE & JOEY KIRKPATRICK (BORN 1949 AND 1952)

Fruit Still Life

blown glass, lacquered wood dish, signed 'Joey Kirkpatrick 1987

Flora Mace' on the peach

heights 1 1/4in (3.2cm) to 5 1/4in (13.3cm)

\$1,500 - 2,000

Provenance

Prominent Bay Area Collector

Literature

Timothy Anglin Burgard, 'The Art of Craft: Contemporary Works from the Saxe Collection', Fine Arts Museums of San Francisco, 1999, p. 115 for an image of work by Mace and Kirkpatrick with similar technique and design

292^W

FLO PERKINS (BORN 1951)

Botanical Sculpture

glass and steel

height approximately 21in (53cm); width 15in (38cm) depth 15in (38cm)

\$1,000 - 1,500



291



292

293

JAMES CARPENTER (BORN 1949)

Calabash Vase

1985

for Venini, fused glass tesserae, signed 'venini 85'

height 9in (23cm)

\$1,500 - 2,000



294

KLAUS MOJE (1936-2016)

#8

1990

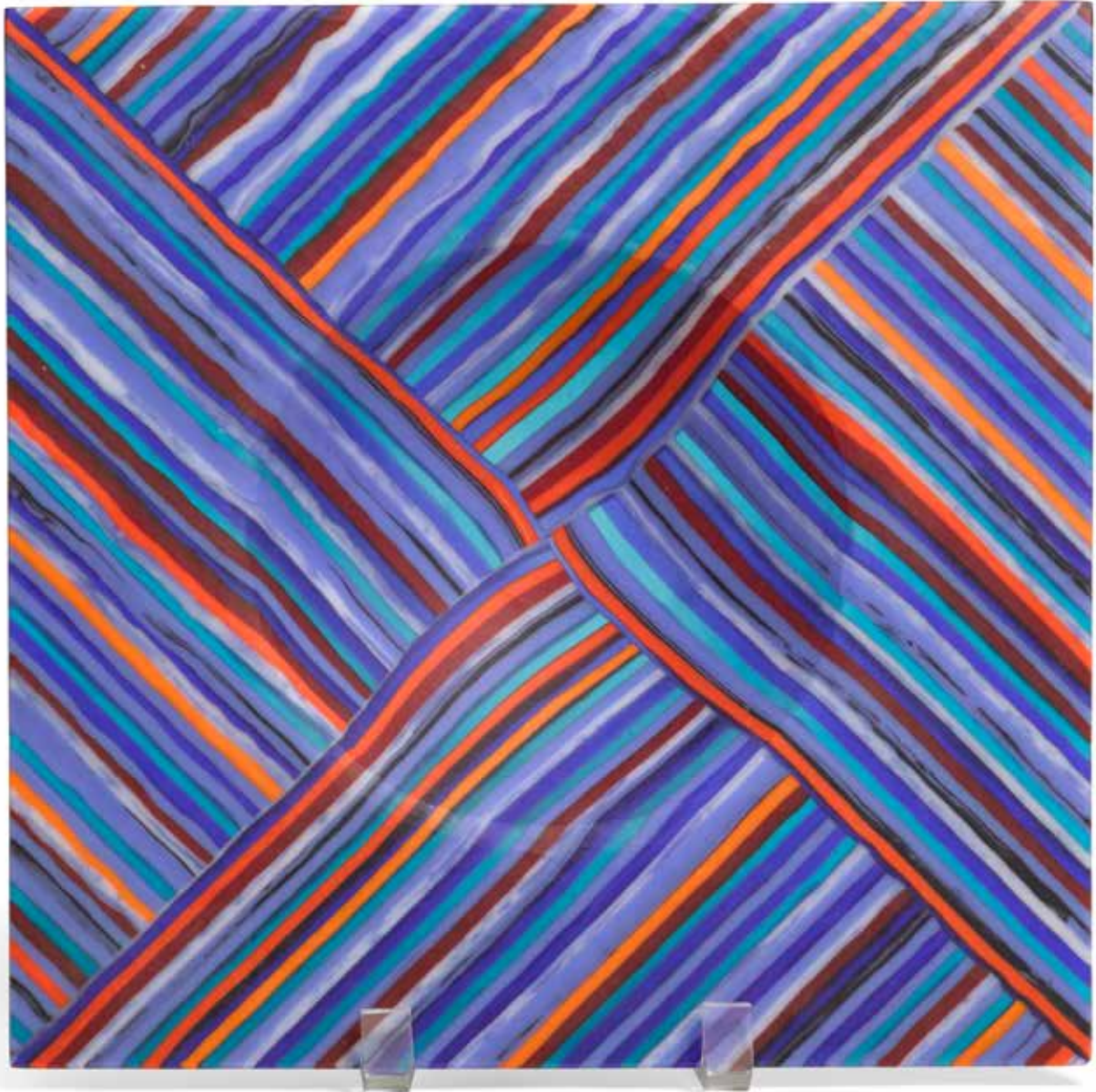
fused glass, signed 'Klaus Moje 1990 #8'

length 11 3/8in (28cm); width 11 3/8in (28cm)

\$2,000 - 4,000

Provenance

Prominent Bay Area Collector



295

RICHARD JOLLEY (BORN 1952)

Fish Wall Relief

glass and enamel

signed and dated 'RJolley 88' in relief

length 10 1/2in (26cm); width 9in (22cm)

\$1,500 - 2,500

Provenance

Prominent Bay Area Collector

296

GINNY RUFFNER (BORN 1952)

Envisioning Renovation

1995

lampworked glass, mixed media

height 11in (27cm); width 9in (22cm); depth 9in (22cm)

\$2,000 - 3,000



295



296

297

GINNY MARTIN RUFFNER (BORN 1952)

The Reign of Interconnectedness

1997

From the Structuring Beauty Series, lampworked glass, mixed media
height 16in (40cm); width 21in (53cm); depth 12in (30cm)

\$1,500 - 2,000



298^W

LUIS MONTOYA (BORN 1950) & LESLIE ORTIZ (BORN 1957)

Plums

circa 1996

patinated bronze, inscribed 'Popliteo' and numbered '2/8'
height 16 1/2in (41cm); width 18in (46cm); depth 8in (20cm)

\$2,000 - 3,000



299^W

DANIEL CLAYMAN (BORN 1957)

Husk

1996

cast glass and bronze

height 8in (20cm); length 44in (112cm); depth 15in (38cm)

\$2,500 - 3,500



300

DALE CHIHULY (BORN 1941)

Neodymium Seaform Group with Viridian Green Lip Wraps

1986

blown glass, signed 'Chihuly 1986'

height of largest element 9 1/8in (23cm); width 18in (46cm); depth 16in (40.6cm) (4)

\$4,000 - 6,000

Provenance:

Kate Elliott Contemporary Glass, Scottsdale, Arizona, April 7, 1987



301

DALE CHIHULY (BORN 1941)

Phthalagreen Macchia with Blue Lip Wrap

1985

blown glass

height 19in (48cm); width 30 1/2in (77.5cm); depth 18in (46cm)

\$12,000 - 18,000

Provenance

Charles Cowles Gallery, 1991



302^W

KARLA TRINKLEY (BORN 1956)

Amphora

1995

pâte de verre, steel

height 44in (111cm); width 12in (30cm); depth 18in (45cm)

\$8,000 - 12,000

Literature

Timothy Anglin Burgard, 'The Art of Craft: Contemporary Works from the Saxe Collection', Fine Arts Museums of San Francisco, 1999, p. 96 for a color plate of work by Trinkley with similar technique and design



303^W

KAREN LAMONTE (BORN 1967)

Mod Dress Relief

2003

cast glass, oak frame, on metal stand

height 44in (111cm); width 28in (71cm); depth 4 1/2in (11cm)

\$15,000 - 25,000

LaMonte's glass dress sculptures are in the permanent collections of the Corning Museum of Glass, the Smithsonian, the Museum of Fine Arts, Boston and many other institutions



304

JAN EXNAR (BORN 1951)

Altus

2012

cut and polished glass, signed 'EX 2012 /3'

height 11 3/4in (30cm); width 12 1/2in (32cm); depth 19 3/4 in (50.3cm)

\$3,000 - 5,000



305^W

GUILLAUME PIECHAUD (BORN 1968)

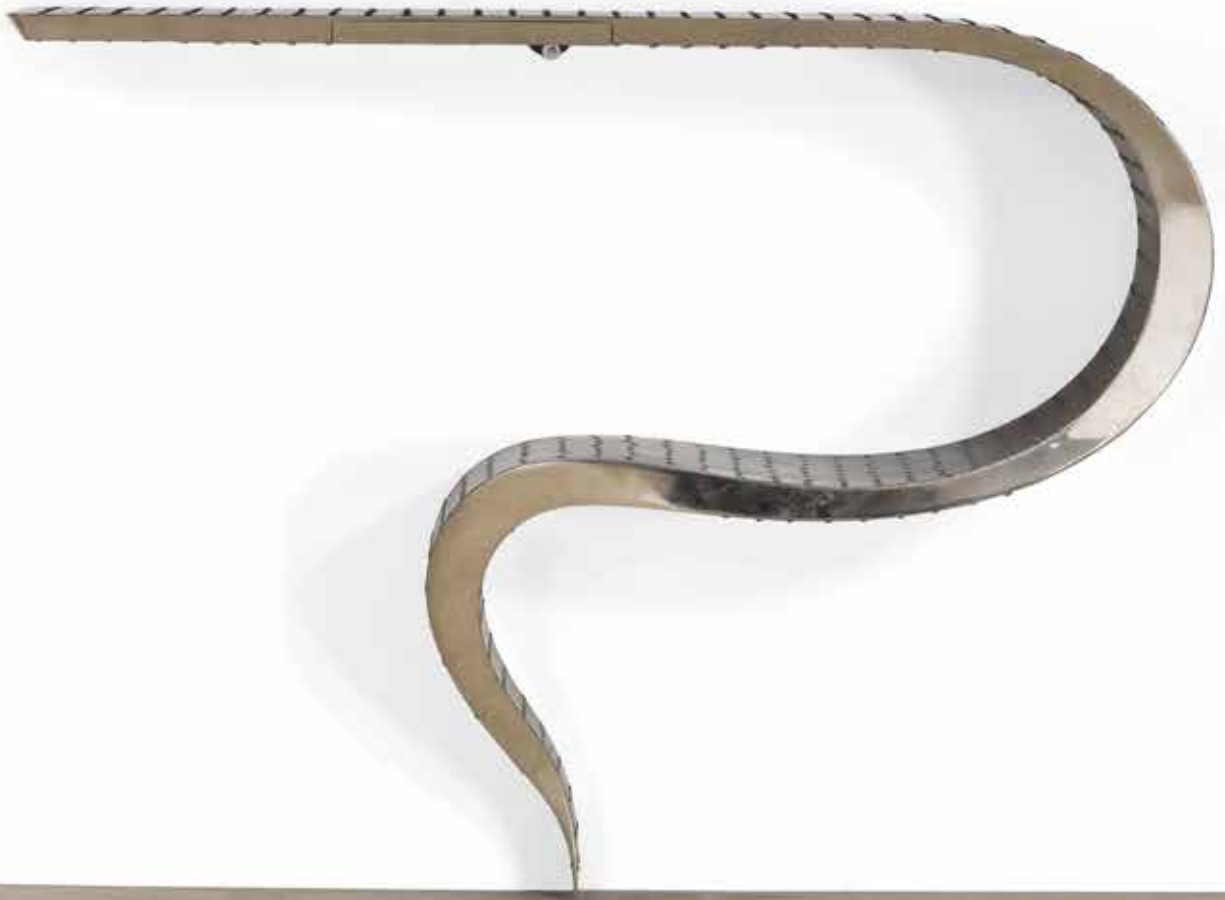
Wall Mounted Console Table

2010

stainless steel, signed on metal tag 'G Piechaud 2010'

height 35in (89cm); width 45in (115cm); depth 13in (33cm)

\$10,000 - 15,000



DECORATIVE ART AND DESIGN

Thursday 12 April, 2018
Knightsbridge, London

**LOUIS WAIN
(BRITISH, 1860-1939)**
A Large Amphora Painted Pottery
Model of a Futuristic Cat
Circa 1920
Height 28.5cm
\$3,500 - \$4,800

ENQUIRIES
decorativearts@bonhams.com
+44 (0) 20 7393 3860



Bonhams

LONDON

bonhams.com/20thcenturydecarts

* For details of the charges payable in addition to the final hammer price, please visit bonhams.com/buyersguide

**MODERN DECORATIVE ART
+ DESIGN**

Wednesday June 6 at 2pm
New York

HARRY BERTOIA (1915-1978)

Bush Form
circa 1960
\$80,000-120,000

INQUIRIES

Benjamin Walker
+1 (212) 710 1306

Dan Tolson
+1 (917) 206 1611
design.us@bonhams.com



Bonhams

AUCTIONEERS SINCE 1793

bonhams.com/design

OFFSITE SOLD PROPERTY STORAGE INFORMATION

Please note that all lots listed at the beginning of our printed catalog, if not removed immediately after the sale, will be transferred to a nearby storage facility. For the convenience of the successful bidder of one or more of these lots, all purchased lots will be transferred to our offsite storage together. Please read the Conditions of Sale regarding the removal of sold lots.

Bonhams' storage and logistics partner is Box Brothers, a well-known organization that specializes in crating, packaging and shipping.

Our storage and logistics partnership provides several beneficial services. The first being 5 days of free storage.

- During this auction, clients will be expected to pick up all property from Bonhams by 5pm on Friday April 20, 2018.
- All items listed at the beginning of our printed catalog, along with all other items purchased, if not removed immediately after the sale, will be transferred to Box Brothers warehouse. With an appointment made 24 hours in advance, clients can pick up their property at 220 W. Ivy Ave, Unit C in Inglewood.
- Box Brothers will charge an uplift fee to transport your items to their warehouse. Small items that can be handled easily by one person will be charged \$50. Larger items that can still be handled by one person will be charged \$85. Large items that require two people to handle will be charged \$100. Charges will be payable directly to Box Brothers. Should you choose to have Box Brothers ship or deliver your property, this uplift fee will be waived.
- Clients will have 5 days of free storage to retrieve their property or make arrangements with Box Brothers to pack and ship their property. Storage fees will begin to accrue on the 6th day of storage.
- Retrieval from the offsite warehouse is by appointment only. Clients must call 24 hours in advance. Clients can utilize the delivery services offered by Box Brothers or clients may make their own arrangements. Please call +1 (800) 474-7447.
- Box Brothers is available to ship internationally. They offer importing and exporting services. Clients can select either airfreight or ocean cargo delivery options, which range from door-to-port, door-to-airport with door-to-door service also available. Clients can ship one item, co-load or container load at a discounted rate through Box Brothers. Please call +1 (800) 474-7447 for more information.
- All purchases not designated for offsite storage will remain onsite at Bonhams for a period of 21 days beginning the date of the auction. During this 21 day period, clients may remove such property themselves, make arrangements with the Bonhams packaging and shipping department or provide their own shipper for removal of all property. If a client does not retrieve his/her property or finalize shipping arrangements within 21 days, the purchases will be removed to the offsite storage facility of Box Brothers. Again, uplift charges for packing and transport from our gallery to Box Brothers will be charged by Box Brothers.
- Payment of the hammer price, premium and any applicable sales taxes must be made directly to Bonhams prior to the release of property. Any removal, storage or other fees due to Box Brothers should be made directly to Box Brothers.
- Change of shipping address must be authorized by Bonhams Revenue Manager, Martin Romero, before Box Brothers will be permitted to re-route your purchases.

LOTS TO BE REMOVED TO STORAGE:

75	156	217
77	157	220
86	158	221
88	160	222
89	161	223
90	162	224
91	163	225
92	165	226
93	176	233
94	177	234
98	178	235
99	179	236
100	181	238
103	185	239
104	186	242
105	188	243
106	189	244
125	190	252
126	192	253
128	193	254
129	196	255
130	197	259
134	198	260
135	199	262
136	201	263
138	202	270
139	204	272
140	205	273
141	206	279
142	207	292
143	209	298
145	210	299
146	211	302
149	212	303
150	213	305
152	214	
155	216	

CONDITIONS OF SALE

The following Conditions of Sale, as amended by any published or posted notices or verbal announcements during the sale, constitute the entire terms and conditions on which property listed in the catalog shall be offered for sale or sold by Bonhams & Butterfields Auctioneers Corp. and any consignor of such property for whom we act as agent. If live online bidding is available for the subject auction, additional terms and conditions of sale relating to online bidding will apply; see www.bonhams.com/WebTerms for the supplemental terms. As used herein, "Bonhams," "we" and "us" refer to Bonhams & Butterfields Auctioneers Corp.

1. As used herein, the term "bid price" means the price at which a lot is successfully knocked down to the purchaser. The term "purchase price" means the aggregate of (a) the bid price, (b) a PREMIUM retained by us and payable by the purchaser EQUAL TO 25% OF THE FIRST \$250,000 OF THE BID PRICE, 20% OF THE AMOUNT OF THE BID PRICE ABOVE \$250,000 UP TO AND INCLUDING \$4,000,000, AND 12.5% OF THE AMOUNT OF THE BID PRICE OVER \$4,000,000, and (c) unless the purchaser is exempt by law from the payment thereof, any Arizona, California, Colorado, Connecticut, Florida, Georgia, Illinois, Massachusetts, Nevada, New Jersey, New York, Pennsylvania, Texas, Virginia, Washington, D.C., Washington state, or other state or local sales tax (or compensating use tax) and other applicable taxes.

2. On the fall of the auctioneer's hammer, the highest bidder shall have purchased the offered lot in accordance and subject to compliance with all of the conditions set forth herein and (a) assumes full risk and responsibility therefor, (b) if requested will sign a confirmation of purchase, and (c) will pay the purchase price in full or such part as we may require for all lots purchased. No lot may be transferred. Any person placing a bid as agent on behalf of another (whether or not such person has disclosed that fact or the identity of the principal) may be jointly and severally liable with the principal under any contract resulting from the acceptance of a bid.

Unless otherwise agreed, payment in good funds is due and payable within five (5) business days following the auction sale. Whenever the purchaser pays only a part of the total purchase price for one or more lots purchased, we may apply such payments, in our sole discretion, to the lot or lots we choose. Payment will not be deemed made in full until we have collected good funds for all amounts due.

Payment for purchases may be made in or by (a) cash, (b) cashier's check or money order, (c) personal check with approved credit drawn on a U.S. bank, (d) wire transfer or other immediate bank transfer, or (e) Visa, MasterCard, American Express or Discover credit, charge or debit card. A processing fee will be assessed on any returned checks. Please note that the amount of cash notes and cash equivalents that can be accepted from a given purchaser may be limited.

To the fullest extent permitted by applicable law: The purchaser grants us a security interest in the property, and we may retain as collateral security for the purchaser's obligations to us, any property and all monies held or received by us for the account of the purchaser, in our possession. We also retain all rights of a secured party under the California Commercial Code. If the foregoing conditions or any other applicable conditions herein are not complied with, in addition to all other remedies available to us and the consignor by law, we may at our election: (a) hold the purchaser liable for the full purchase price and any late charges, collection costs, attorneys' fees and costs, expenses and incidental damages incurred by us or the consignor arising out of the purchaser's breach; (b) cancel the sale, retaining as liquidated damages all payments made by the purchaser; and/or (c) cancel the sale and/or

resell the purchased property, at public auction and/or by private sale, and in such event the purchaser shall be liable for the payment of all consequential damages, including any deficiencies or monetary losses, and all costs and expenses of such sale or sales, our commissions at our standard rates, all other charges due hereunder, all late charges, collection costs, attorneys' fees and costs, expenses and incidental damages. In addition, where two or more amounts are owed in respect of different transactions by the purchaser to us, to Bonhams 1793 Limited and/or to any of our other affiliates, subsidiaries or parent companies worldwide within the Bonhams Group, we reserve the right to apply any monies paid in respect of a transaction to discharge any amount owed by the purchaser. If all fees, commissions, premiums, bid prices and other sums due to us from the purchaser are not paid promptly as provided in these Conditions of Sale, we reserve the right to impose a finance charge equal to 1.5% per month (or, if lower, the maximum nonusurious rate of interest permitted by applicable law), on all amounts due to us beginning on the 31st day following the sale until payment is received, in addition to other remedies available to us by law.

3. We reserve the right to withdraw any property and to divide and combine lots at any time before such property's auction. Unless otherwise announced by the auctioneer at the time of sale, all bids are per lot as numbered in the catalog and no lots shall be divided or combined for sale.

4. We reserve the right to reject a bid from any bidder, to split any bidding increment, and to advance the bidding in any manner the auctioneer may decide. In the event of any dispute between bidders, or in the event the auctioneer doubts the validity of any bid, the auctioneer shall have sole and final discretion either to determine the successful bidder or to re-offer and resell the article in dispute. If any dispute arises after the sale, our sales records shall be conclusive in all respects.

5. If we are prevented by fire, theft or any other reason whatsoever from delivering any property to the purchaser or a sale otherwise cannot be completed, our liability shall be limited to the sum actually paid therefor by the purchaser and shall in no event include any compensatory, incidental or consequential damages.

6. If a lot is offered subject to a reserve, we may implement such reserve by bidding on behalf of the consignor, whether by opening bidding or continuing bidding in response to other bidders until reaching the reserve. If we have an interest in an offered lot and the proceeds therefrom other than our commissions, we may bid therefor to protect such interest. CONSIGNORS ARE NOT ALLOWED TO BID ON THEIR OWN ITEMS.

7. All statements contained in the catalog or in any bill of sale, condition report, invoice or elsewhere as to authorship, period, culture, source, origin, measurement, quality, rarity, provenance, importance, exhibition and literature of historical relevance, or physical condition ARE QUALIFIED STATEMENTS OF OPINION AND NOT REPRESENTATIONS OR WARRANTIES. No employee or agent of Bonhams is authorized to make on our behalf or on that of the consignor any representation or warranty, oral or written, with respect to any property.

8. All purchased property shall be removed from the premises at which the sale is conducted by the date(s) and time(s) set forth in the "Buyer's Guide" portion of this catalog. Property designated with a "W" and associated purchased lots, if not removed promptly following sale, will be transferred to an offsite warehouse at the purchaser's risk and expense, as set forth in more detail in the "Buyer's Guide." Purchased property that is permitted to remain onsite at Bonhams' facility should be removed at the purchaser's expense not later than 5:00 p.m. Pacific Time

five (5) business days following the date of the sale. If not so removed, a storage fee of \$5.00 per lot per day will be payable to us by the purchaser beginning at the close of the 21st day following the sale, and we may thereafter transfer such property to an offsite warehouse at the purchaser's risk and expense. Accounts must be settled in full before property will be released. Packing and handling of purchased lots are the responsibility of the purchaser. Bonhams can provide packing and shipping services for certain items as noted in the "Buyer's Guide" section of the catalog.

9. The copyright in the text of the catalog and the photographs, digital images and illustrations of lots in the catalog belong to Bonhams or its licensors. You will not reproduce or permit anyone else to reproduce such text, photographs, digital images or illustrations without our prior written consent.

10. These Conditions of Sale shall bind the successors and assigns of all bidders and purchasers and inure to the benefit of our successors and assigns. No waiver, amendment or modification of the terms hereof (other than posted notices or oral announcements during the sale) shall bind us unless specifically stated in writing and signed by us. If any part of these Conditions of Sale is for any reason invalid or unenforceable, the rest shall remain valid and enforceable.

11. These Conditions of Sale and the purchaser's and our respective rights and obligations hereunder are governed by the laws of the State of California. By bidding at an auction, each purchaser and bidder agrees to be bound by these Conditions of Sale. Any dispute, controversy or claim arising out of or relating to this agreement, or the breach, termination or validity thereof, brought by or against Bonhams (but not including claims brought against the consignor by the purchaser of lots consigned hereunder) shall be resolved by the procedures set forth below.

MEDIATION AND ARBITRATION PROCEDURES

(a) Within 30 days of written notice that there is a dispute, the parties or their authorized and empowered representatives shall meet by telephone and/or in person to mediate their differences. If the parties agree, a mutually acceptable mediator shall be selected and the parties will equally share such mediator's fees. The mediator shall be a retired judge or an attorney familiar with commercial law and trained in or qualified by experience in handling mediations. Any communications made during the mediation process shall not be admissible in any subsequent arbitration, mediation or judicial proceeding. All proceedings and any resolutions thereof shall be confidential, and the terms governing arbitration set forth in paragraph (c) below shall govern.

(b) If mediation does not resolve all disputes between the parties, or in any event no longer than 60 days after receipt of the written notice of dispute referred to above, the parties shall submit the dispute for binding arbitration before a single neutral arbitrator. Such arbitrator shall be a retired judge or an attorney familiar with commercial law and trained in or qualified by experience in handling arbitrations. Such arbitrator shall make all appropriate disclosures required by law. The arbitrator shall be drawn from a panel of a national arbitration service agreed to by the parties, and shall be selected as follows: (i) If the national arbitration service has specific rules or procedures, those rules or procedures shall be followed; (ii) If the national arbitration service does not have rules or procedures for the selection of an arbitrator, the arbitrator shall be an individual jointly agreed to by the parties. If the parties cannot agree on a national arbitration service, the arbitration shall be conducted by the American Arbitration Association, and the arbitrator shall be selected in accordance with the Rules of

CONDITIONS OF SALE - CONTINUED

the American Arbitration Association. The arbitrator's award shall be in writing and shall set forth findings of fact and legal conclusions.

(c) Unless otherwise agreed to by the parties or provided by the published rules of the national arbitration service:

(i) the arbitration shall occur within 60 days following the selection of the arbitrator;

(ii) the arbitration shall be conducted in the designated location, as follows: (A) in any case in which the subject auction by Bonhams took place or was scheduled to take place in the State of New York or Connecticut or the Commonwealth of Massachusetts, the arbitration shall take place in New York City, New York; (B) in all other cases, the arbitration shall take place in the city of San Francisco, California; and

(iii) discovery and the procedure for the arbitration shall be as follows:

(A) All arbitration proceedings shall be confidential;

(B) The parties shall submit written briefs to the arbitrator no later than 15 days before the arbitration commences;

(C) Discovery, if any, shall be limited as follows: (I) Requests for no more than 10 categories of documents, to be provided to the requesting party within 14 days of written request therefor; (II) No more than two (2) depositions per party, provided however, the deposition(s) are to be completed within one (1) day; (III) Compliance with the above shall be enforced by the arbitrator in accordance with California law;

(D) Each party shall have no longer than eight (8) hours to present its position. The entire hearing before the arbitrator shall not take longer than three (3) consecutive days;

(E) The award shall be made in writing no more than 30 days following the end of the proceeding. Judgment upon the award rendered by the arbitrator may be entered by any court having jurisdiction thereof.

To the fullest extent permitted by law, and except as required by applicable arbitration rules, each party shall bear its own attorneys' fees and costs in connection with the proceedings and shall share equally the fees and expenses of the arbitrator.

LIMITED RIGHT OF RESCISSION

If within one (1) year from the date of sale, the original purchaser (a) gives written notice to us alleging that the identification of Authorship (as defined below) of such lot as set forth in the **BOLD TYPE** heading of the catalog description of such lot (as amended by any saleroom notices or verbal announcements during the sale) is not substantially correct based on a fair reading of the catalog (including the terms of any glossary contained therein), and (b) within 10 days after such notice returns the lot to us in the same condition as at the time of sale, and (c) establishes the allegation in the notice to our satisfaction (including by providing one or more written opinions by recognized experts in the field, as we may reasonably require), then the sale of such lot will be rescinded and, unless we have already paid to the consignor monies owed him in connection with the sale, the original purchase price will be refunded.

If, prior to receiving such notice from the original purchaser alleging such defect, we have paid the consignor monies owed him in connection with the sale, we shall pay the original purchaser the amount of our commissions, any other sale proceeds to which we are entitled and applicable taxes received from the purchaser on the sale and make demand on the consignor to pay the balance of the original purchase price to the original purchaser. Should the consignor fail to pay such amount promptly, we may disclose the identity of the consignor and assign to the original purchaser our rights against the consignor with respect to the lot the sale of which is sought to be rescinded. Upon such disclosure and assignment, any liability of Bonhams as consignor's agent with respect to said lot shall automatically terminate.

The foregoing limited right of rescission is available to the original purchaser only and may not be assigned to or relied upon by any subsequent transferee of the property sold. The purchaser hereby accepts the benefit of the consignor's warranty of title and other representations and warranties made by the consignor for the purchaser's benefit. Nothing in this section shall be construed as an admission by us of any representation of fact, express or implied, obligation or responsibility with respect to any lot. **THE PURCHASER'S SOLE AND EXCLUSIVE**

REMEDY AGAINST BONHAMS FOR ANY REASON WHATSOEVER IS THE LIMITED RIGHT OF RESCISSION DESCRIBED IN THIS SECTION.

"Authorship" means only the identity of the creator, the period, culture and source or origin of the lot, as the case may be, as set forth in the **BOLD TYPE** heading of the print catalog entry. The right of rescission does not extend to: (a) works of art executed before 1870 (unless these works are determined to be counterfeits created since 1870), as this is a matter of current scholarly opinion which can change; (b) titles, descriptions, or other identification of offered lots, which information normally appears in lower case type below the **BOLD TYPE** heading identifying the Authorship; (c) Authorship of any lot where it was specifically mentioned that there exists a conflict of specialist or scholarly opinion regarding the Authorship of the lot at the time of sale; (d) Authorship of any lot which as of the date of sale was in accordance with the then generally-accepted opinion of scholars and specialists regarding the same; or (e) the identification of periods or dates of creation in catalog descriptions which may be proven inaccurate by means of scientific processes that are not generally accepted for use until after publication of the catalog in which the property is offered or that were unreasonably expensive or impractical to use at the time of such publication.

LIMITATION OF LIABILITY

EXCEPT AS EXPRESSLY PROVIDED ABOVE, ALL PROPERTY IS SOLD "AS IS." NEITHER BONHAMS NOR THE CONSIGNOR MAKES ANY REPRESENTATION OR WARRANTY, EXPRESS OR IMPLIED, AS TO THE MERCHANTABILITY, FITNESS OR CONDITION OF THE PROPERTY OR AS TO THE CORRECTNESS OF DESCRIPTION, GENUINENESS, ATTRIBUTION, PROVENANCE OR PERIOD OF THE PROPERTY OR AS TO WHETHER THE PURCHASER ACQUIRES ANY COPYRIGHTS OR OTHER INTELLECTUAL PROPERTY RIGHTS IN LOTS SOLD OR AS TO WHETHER A WORK OF ART IS SUBJECT TO THE ARTIST'S MORAL RIGHTS OR OTHER RESIDUAL RIGHTS OF THE ARTIST. THE PURCHASER EXPRESSLY ACKNOWLEDGES AND AGREES THAT IN NO EVENT SHALL BONHAMS BE LIABLE FOR ANY DAMAGES INCLUDING, WITHOUT LIMITATION, ANY COMPENSATORY, INCIDENTAL OR CONSEQUENTIAL DAMAGES.

SELLER'S GUIDE

SELLING AT AUCTION

Bonhams can help you every step of the way when you are ready to sell art, antiques and collectible items at auction. Our regional offices and representatives throughout the US are available to service all of your needs. Should you have any further questions, please visit our website at www.bonhams.com/us for more information or call our Client Services Department at +1 (323) 850 7500.

AUCTION ESTIMATES

The first step in the auction process is to determine the auction value of your property. Bonhams' world-renowned specialists will evaluate your special items at no charge and in complete confidence. You can obtain an auction estimate in many ways:

- Attend one of our Auction Appraisal Events held regularly at our galleries and in other major metropolitan areas. The updated schedule for Bonhams Auction Appraisal Events is available at www.bonhams.com/us.
- Call our Client Services Department to schedule a private appointment at one of our galleries. If you have a large collection, our specialists can travel, by appointment, to evaluate your property on site.
- Send clear photographs to us of each individual item, including item dimensions and other pertinent information with each picture. Photos should be sent to Bonhams' address in envelopes marked

as "photo auction estimate". Alternatively, you can submit your request using our online form at www.bonhams.com/us. Digital images may be attached to the form. Please limit your images to no more than five (5) per item.

CONSIGNING YOUR PROPERTY

After you receive an estimate, you may consign your property to us for sale in the next appropriate auction. Our staff assists you throughout the process, arranging transportation of your items to our galleries (at the consignor's expense), providing a detailed inventory of your consignment, and reporting the prices realized for each lot. We provide secure storage for your property in our warehouses and all items are insured throughout the auction process. You will receive payment for your property approximately 35 days after completion of sale.

Sales commissions vary with the potential auction value of the property and the particular auction in which the property is offered. Please call us for commission rates.

PROFESSIONAL APPRAISAL SERVICES

Bonhams' specialists conduct insurance and fair market value appraisals for private collectors, corporations, museums, fiduciaries and government entities on a daily basis. Insurance appraisals, used for insurance purposes, reflect the cost of replacing property in today's retail market. Fair market value appraisals are used for estate,

tax and family division purposes and reflect prices paid by a willing buyer to a willing seller.

When we conduct a private appraisal, our specialists will prepare a thorough inventory listing of all your appraised property by category. Valuations, complete descriptions and locations of items are included in the documentation.

Appraisal fees vary according to the nature of the collection, the amount of work involved, the travel distance, and whether the property is subsequently consigned for auction.

Our appraisers are available to help you anywhere and at any time. Please call our Client Services Department to schedule an appraisal.

ESTATE SERVICES

Since 1865, Bonhams has been serving the needs of fiduciaries – lawyers, trust officers, accountants and executors – in the disposition of large and small estates. Our services are specially designed to aid in the efficient appraisal and disposition of fine art, antiques, jewelry, and collectibles. We offer a full range of estate services, ranging from flexible financial terms to tailored accounting for heirs and their agents to world-class marketing and sales support.

For more information or to obtain a detailed Trust and Estates package, please visit our website at www.bonhams.com/us or contact our Client Services Department.

BUYER'S GUIDE

BIDDING & BUYING AT AUCTION

Whether you are an experienced bidder or an enthusiastic novice, auctions provide a stimulating atmosphere unlike any other. Bonhams previews and sales are free and open to the public. As you will find in these directions, bidding and buying at auction is easy and exciting. Should you have any further questions, please visit our website at www.bonhams.com or call our Client Services Department at +1 (323) 850 7500.

Catalogs

Before each auction we publish illustrated catalogs that include dates and times for previews and auctions. Our catalogs also provide descriptions and estimated values for each "lot." A lot may refer to a single item or to a group of items auctioned together. We offer our catalogs by subscription or by single copy. For information on subscribing to our catalogs, you may refer to the subscription form in this catalog, call our Client Services Department, or visit our website at www.bonhams.com/us.

Previews

Auction previews are your chance to inspect each lot prior to the auction. We encourage you to look closely and examine each object on which you may want to bid so that you will know as much as possible about it. Items are sold "as is" and with all faults; illustrations in our catalogs, website and other materials are provided for identification only. At the previews, our staff is always available to answer your questions and guide you through the auction process. Condition reports may be available upon request.

Estimates

Bonhams catalogs include estimates for each lot, exclusive of buyer's premium and tax. The estimates are provided as an approximate guide to current market value and should not be interpreted as a representation or prediction of actual selling prices. They are determined well in advance of a sale and are subject to revision. Please contact us should you have any questions about value estimates.

Reserves

All lots in a catalog are subject to a reserve unless otherwise indicated. The reserve is the minimum price that the seller is willing to accept for a lot. This amount is confidential and does not exceed the low estimated value.

BIDDING AT AUCTION

At Bonhams, you can bid in many ways: in person, via absentee bid, over the phone, or via Bonhams' online bidding facility. Absentee bids can be submitted in person, online, via fax or via email.

A valid Bonhams client account is required to participate in bidding activity. You can obtain registration information online, at the reception desk or by calling our Client Services Department.

By bidding at auction, whether in person or by agent, by absentee bid, telephone, online or other means, the buyer or bidder agrees to be bound by the Conditions of Sale.

Lots are auctioned in consecutive numerical order as they appear in the catalog. Bidding normally begins below the low estimate. The auctioneer will accept bids from interested parties present in the saleroom, from telephone bidders, and from absentee bidders who have left written bids in advance of the sale. The auctioneer may also execute bids on behalf of the consignor up to the amount of the reserve, but never above it.

We assume no responsibility for failure to execute bids for any reason whatsoever.

In Person

If you are planning to bid at auction, you will need to register at the reception desk in order to receive a numbered bid card. To place a bid, hold up your card so that the auctioneer can clearly see it. Decide on the maximum amount that you wish to pay, exclusive of buyer's premium and tax, and continue bidding until your bid prevails or you reach your limit. If you are the successful bidder on a lot, the auctioneer will acknowledge your paddle number and bid amount.

Absentee Bids

As a service to those wishing to place bids, we may at our discretion accept bids without charge in advance of sale by telephone, by facsimile or in writing on bidding forms available from us. "Buy" bids will not be accepted; all bids must state the highest bid price the bidder is willing to pay. Our auction staff will try to bid just as you would, with the goal of obtaining the

item at the lowest bid price possible. In the event identical bids are submitted, the earliest bid submitted will take precedence. Absentee bids shall be executed in competition with other absentee bids, any applicable reserve, and bids from other auction participants. A friend or agent may place bids on your behalf, provided that we have received your written authorization prior to the sale. Absentee bid forms are available in our catalogs, online at www.bonhams.com/us, and at our San Francisco, Los Angeles and New York galleries.

By Telephone

Under special circumstances, we can arrange for you to bid by telephone. To arrange for a telephone bid, please contact our Client Services Department a minimum of 24 hours prior to the sale.

Online

Web users may place absentee bids online from anywhere in the world. To bid online, please visit our website at www.bonhams.com/us.

We are pleased to make our live online bidding facility available to bidders in this sale.

Additional terms and conditions of sale relating to online bidding will apply. Please see www.bonhams.com/24769 or contact the Client Services Department to obtain information and learn how you can register and bid online in this sale.

Bid Increments

Bonhams generally uses the following increment multiples as bidding progresses:

\$50-200	by \$10s
\$200-500	by \$20/50/80s
\$500-1,000	by \$50s
\$1,000-2,000	by \$100s
\$2,000-5,000	by \$200/500/800s
\$5,000-10,000	by \$500s
\$10,000-20,000	by \$1,000s
\$20,000-50,000	by \$2,000/5,000/8,000s
\$50,000-100,000	by \$5,000s
\$100,000-200,000	by \$10,000s
above \$200,000	at auctioneer's discretion

The auctioneer may split or reject any bid at any time at his or her discretion as outlined in the Conditions of Sale.

Currency Converter

Solely for the convenience of bidders, a currency converter may be provided at Bonhams sales. The rates quoted for conversion of other currencies to U.S. Dollars are indications only and should not be relied upon by a bidder, and neither Bonhams nor its agents shall be responsible for any errors or omissions in the operation or accuracy of the currency converter.

Buyer's Premium

A buyer's premium is added to the winning bid price of each individual lot purchased, at the rates set forth in the Conditions of Sale. The winning bid price plus the premium constitute the purchase price for the lot. Applicable sales taxes are computed based on this figure, and the total becomes your final purchase price.

Unless specifically illustrated and noted, fine art frames are not included in the estimate or purchase price. Bonhams accepts no liability for damage or loss to frames during storage or shipment.

All sales are final and subject to the Conditions of Sale found in our catalogs, on our website, and available at the reception desk.

Payment

All buyers are asked to pay and pick up by 3pm on the business day following the auction. Payment may be made to Bonhams by cash, checks drawn on a U.S. bank, money order, wire transfer, or by Visa, MasterCard, American Express or Discover credit or charge card or debit card. All items must be paid for within 5 business days of the sale. Please note that payment by personal or business check may result in property not being released until purchase funds clear our bank.

Sales Tax

Residents of states listed in Paragraph 1 of the Conditions of Sale must pay applicable sales tax. Other state or local taxes (or compensation use taxes) may apply. Sales tax will be automatically added to the invoice unless a valid resale number has been furnished or the property is shipped via common carrier to destinations outside the states listed in

the Conditions of Sale. If you wish to use your resale license please contact Cashiers for our form.

Shipping & Removal

Buyers are to review the Offsite Sold Property Storage page for a list of lots that will be removed to the offsite warehouse of Box Brothers. These designated lots must be retrieved by the buyer prior to the day and time designated on the Offsite Sold Property Storage page. If buyers of these designated lots also buy other lots, such as decorations, rugs or works of art, these lots may also be removed to the warehouse of Box Brothers, so all lots remain together and customers can collect or ship from one location. All other items will remain at Bonhams for a period of 21 days, after which time they may be transferred to offsite storage. [Wine, Jewelry, Natural History, Collectibles, 20th Century Decorative Arts, Rugs, Native American Art, Tribal Art and most Arms & Armor auctions are not included in this policy.](#)

Box Brothers San Leandro (for San Francisco auctions only)
1471 Doolittle Drive, San Leandro, CA 94577
Tel (800) 942 6822; Fax (510) 628 8454

Box Brothers Los Angeles (for Los Angeles auctions only)
220 W. Ivy Ave, Unit C, Inglewood, Ca 90302
+1 (310) 419 9915 or +1 (800) 474 7447

Box Brothers is open Monday-Friday 8am-5pm with Saturday and Sunday hours available. Buyers must contact Box Brothers 24 hours in advance of pickup. Appointments are required.

Bonhams can accommodate shipping for certain items. Please contact our Cashiers Department for more information or to obtain a quote. Refer to Conditions of Sale for special terms governing the shipment of Arms and Wine. Shipments are made during weekday business hours up to four weeks after payment is received. Carriers are not permitted to deliver to P.O. Boxes.

International buyers are responsible for all import/export customs duties and taxes. An invoice stating the actual purchase price(s) will accompany all international purchases.

Simultaneous sale property collection notice:

If this sale previews in multiple cities, please see the title page for details regarding final location of property for collection.

Handling and Storage Charges

Please note: For sold lots removed to Box Brothers, there will be no post-sale storage charge for lots collected within 5 days from the sale date. For lots that remain at Bonhams, there will be no post-sale storage charge for lots collected within 21 days of the sale date. Handling fees may apply.

Lots uncollected at Bonhams after 21 days may be removed to the warehouse of Box Brothers. Handling and storage fees will apply.

Insurance: All sold lots are insured by Box Brothers at the sum of the hammer price plus buyer's premium.

Please refer to Box Brothers for a list of Handling, Storage and Insurance fees.

Payment

Payments for purchased lots must be made directly to Bonhams. Box Brothers will not release property to a buyer unless the buyer has paid Bonhams first. All charges for handling and storage due to Box Brothers must be paid by the time of collection from their warehouse. Please telephone Box Brothers at +1 (800) 474 7447 in advance to ascertain the amount due. **Lots will only be released from Box Brothers' warehouse with a "Release Order" obtained from the cashier's office at Bonhams.**

The removal/storage and/or shipment by Box Brothers of any lots will be subject to their standard Conditions of Business, copies of which are available at Bonhams or from Box Brothers directly.

Auction Results

Auction results are usually available on the next business day following the sale or online at www.bonhams.com/us.

CONTACTS

OFFICERS

Malcolm Barber
Co-Chairman

Matthew Girling
Chief Executive Officer

Laura King Pfaff •
Chairman Emeritus

Leslie Wright
Vice President, Trusts and Estates

Jon King
Vice President, Business Development

Vice Presidents, Specialists
Rupert Banner
Mark Fisher
Dessa Goddard
Jakob Greisen
Bruce MacLaren

Scot Levitt
Mark Osborne
Brooke Sivo
Catherine Williamson

REPRESENTATIVES

Arizona

Terri Adrian-Hardy, (602) 859 1843

California

David Daniel
(916) 364 1645, Central Valley

California

Brooke Sivo
(760) 350 4255, Palm Springs
(323) 436 5420, San Diego

Colorado

Lance Vigil
(720) 355 3737, Denver
colorado@bonhams.com

Florida

Jon King
(561) 651 7876, Palm Beach
(305) 228 6600, Miami
(954) 566 1630, Ft. Lauderdale

Georgia

Mary Moore Bethea, (470) 393 7322 •

Illinois

Ricki Harris
(773) 267 3300, (773) 680 2881

Massachusetts/New England

Amy Corcoran, (617) 742 0909

Nevada

David Daniel, (775) 831 0330

Oregon and Idaho

Sheryl Acheson, (971) 727 7797

Texas, Oklahoma and Louisiana

Amy Lawch, (713) 621 5988 •

Virginia and Washington DC

Gertraud Hechl, (202) 422 2733 •

Washington

Heather O'Mahony, (206) 566 3913

Canada, Toronto, Ontario

Kristin Hayashi, (416) 462 3741 •

Montreal, Quebec

David Kelsey, (514) 894 1138 •

BONHAMS *

NEW YORK DEPARTMENTS
580 Madison Avenue
New York, New York 10022
(212) 644 9001

Books & Manuscripts
Ian Ehling, (212) 644 9094
Darren Sutherland, (212) 461 6531

Chinese Works of Art & Paintings
Bruce MacLaren, (917) 206 1677
Ming Hua, (646) 837 8132

Collectors' Motorcars & Motorcycles
Rupert Banner, (212) 461 6515
Eric Minoff, (917) 206 1630
Evan Ide, (917) 340 4657
Michael Caimano, (917) 206 1615

Fine Art

American

Jennifer Jacobsen, (917) 206 1699
Elizabeth Goodridge, (917) 206 1621

Contemporary

Jeremy Goldsmith, (917) 206 1656
Megan Murphy, (212) 644 9020

European Paintings

Madalina Lazen, (212) 644 9108

Impressionist & Modern

Nathania Nisonson, (917) 206 1617

Himalayan Art

Mark Rasmussen, (917) 206 1688

Japanese Works of Art

Jeff Olson, (212) 461 6516

Jewelry

Caroline Morrissey, (212) 644 9046
Camille Barbier, (212) 644 9035

Modern Decorative Arts & Design

Benjamin Walker, (212) 710 1306
Dan Tolson, (917) 206 1611

Photographs & Prints

Deborah Ripley, (212) 644 9059
Laura Paterson, (917) 206 1653

Russian Fine & Decorative Arts

Yelena Harbick, (212) 644 9136

Trusts & Estates

Sherri Cohen, (917) 206 1671

Watches & Clocks

Jonathan Snellenburg, (212) 461 6530

CLIENT SERVICES DEPARTMENT

San Francisco

(415) 861 7500
(415) 861 8951 fax
Monday - Friday, 9am to 5pm

Los Angeles

(323) 850 7500
(323) 850 6090 fax
Monday - Friday, 9am to 5pm

BONHAMS *

SAN FRANCISCO DEPARTMENTS
220 San Bruno Avenue
San Francisco California 94103
(415) 861 7500

20th Century Fine Art
Dane Jensen, (323) 436 5451

Arms & Armor
Paul Carella, (415) 503 3360

Asian Works of Art
Dessa Goddard, (415) 503 3333

Books & Manuscripts
Adam Stackhouse, (415) 503 3266

Chinese Works of Art
Daniel Herske, (415) 503 3271

Jewelry & Watches
Shannon Beck, (415) 503 3306

Collectors' Motorcars & Motorcycles
Mark Osborne, (415) 503 3353
Jakob Greisen, (415) 503 3284

Museum Services
Laura King Pfaff, (415) 503 3210

Native American Art
Ingmars Lindbergs, (415) 503 3393

**California & Western
Paintings & Sculpture**
Aaron Bastian, (415) 503 3241
Christine Skinner, (415) 503 3400

Photographs & Prints
Morisa Rosenberg, (323) 436 5435

Space History
Adam Stackhouse, (415) 503 3266

Trusts & Estates
Victoria Richardson, (415) 503 3207
Celeste Smith, (415) 503 3214

Wine
Erin McGrath, (415) 503 3319

BONHAMS *

LOS ANGELES DEPARTMENTS
7601 W. Sunset Boulevard
Los Angeles California 90046
(323) 850 7500

20th Century Decorative Arts
Angela Past, (323) 436 5422
Jason Stein, (323) 436 5466

20th Century Fine Art
Alexis Chompaisal, (323) 436 5469

African, Oceanic & Pre-Columbian Art
Fredric W. Backlar, (323) 436 5416 •

Books & Manuscripts
Catherine Williamson, (323) 436 5442

Coins & Banknotes
Paul Song, (323) 436 5455

Contemporary Art
Dane Jensen, (323) 436 5451

Entertainment Memorabilia
Catherine Williamson, (323) 436 5442
Dana Hawkes, (978) 283 1518

Furniture, Decorative Arts & Ceramics
Andrew Jones, (323) 436 5432
Jennifer Kurtz, (323) 436 5478

Jewelry & Watches
Dana Ehrman, (323) 436 5407
Alexis Vourvoulis, (323) 436 5483

Collectors' Motorcars & Motorcycles
Andrew Barrett, (323) 436 5450

Photographs & Prints
Morisa Rosenberg, (323) 436 5435

Natural History
Thomas E. Lindgren, (310) 469 8567 •
Claudia Florian, G.J.G., (323) 436 5437 •

**California & Western
Paintings & Sculpture**
Scot Levitt, (323) 436 5425
Kathy Wong, (323) 436 5415

European Paintings
Mark Fisher, (323) 436 5488

Silver
Aileen Ward, (323) 436 5463

Trusts & Estates
Leslie Wright, (323) 436 5408
Joseph Francaviglia, (323) 436 5443

• Indicates saleroom
• Indicates independent contractor

The following information is recorded and available 24 hours a day, 7 days a week, through our telephone system:
- Auction and Preview Information
- Directions to Bonhams's salesrooms
- Automated Auction Results

Auction Registration Form

(Attendee / Absentee / Online / Telephone Bidding)

Please circle your bidding method above.

--	--	--	--

Paddle number (for office use only)

General Notice: This sale will be conducted in accordance with Bonhams Conditions of Sale, and your bidding and buying at the sale will be governed by such terms and conditions. Please read the Conditions of Sale in conjunction with the Buyer's Guide relating to this sale and other published notices and terms relating to bidding. Payment by personal or business check may result in your property not being released until purchase funds clear our bank. Checks must be drawn on a U.S. bank.

Notice to Absentee Bidders: In the table below, please provide details of the lots on which you wish to place bids at least 24 hours prior to the sale. Bids will be rounded down to the nearest increment. Please refer to the Buyer's Guide in the catalog for further information relating to instructions to Bonhams to execute absentee bids on your behalf. Bonhams will endeavor to execute bids on your behalf but will not be liable for any errors or non-executed bids.

Notice to First Time Bidders: New clients are requested to provide photographic proof of ID - passport, driving license, ID card, together with proof of address - utility bill, bank or credit card statement etc. Corporate clients should also provide a copy of their articles of association / company registration documents, together with a letter authorizing the individual to bid on the company's behalf. Failure to provide this may result in your bids not being processed. For higher value lots you may also be asked to provide a bankers reference.

Notice to online bidders; If you have forgotten your username and password for www.bonhams.com, please contact Client Services.

If successful

- I will collect the purchases myself
- Please contact me with a shipping quote (if applicable)
- I will arrange a third party to collect my purchase(s)

Please email or fax the completed Registration Form and requested information to:

Bonhams Client Services Department
7601 W. Sunset Blvd
Los Angeles, California 90046
Tel +1 (323) 850 7500
Fax +1 (323) 850 6090
bids.us@bonhams.com

Bonhams

Sale title: Modern Decorative Art + Design		Sale date: Thursday April 17, 2018													
Sale no. 24769		Sale venue: Los Angeles													
<p>General Bid Increments:</p> <table border="0"> <tr> <td>\$10 - 200by 10s</td> <td>\$10,000 - 20,000by 1,000s</td> </tr> <tr> <td>\$200 - 500by 20 / 50 / 80s</td> <td>\$20,000 - 50,000by 2,000 / 5,000 / 8,000s</td> </tr> <tr> <td>\$500 - 1,000by 50s</td> <td>\$50,000 - 100,000by 5,000s</td> </tr> <tr> <td>\$1,000 - 2,000by 100s</td> <td>\$100,000 - 200,000by 10,000s</td> </tr> <tr> <td>\$2,000 - 5,000by 200 / 500 / 800s</td> <td>above \$200,000at the auctioneer's discretion</td> </tr> <tr> <td>\$5,000 - 10,000by 500s</td> <td>The auctioneer has discretion to split any bid at any time.</td> </tr> </table>				\$10 - 200by 10s	\$10,000 - 20,000by 1,000s	\$200 - 500by 20 / 50 / 80s	\$20,000 - 50,000by 2,000 / 5,000 / 8,000s	\$500 - 1,000by 50s	\$50,000 - 100,000by 5,000s	\$1,000 - 2,000by 100s	\$100,000 - 200,000by 10,000s	\$2,000 - 5,000by 200 / 500 / 800s	above \$200,000at the auctioneer's discretion	\$5,000 - 10,000by 500s	The auctioneer has discretion to split any bid at any time.
\$10 - 200by 10s	\$10,000 - 20,000by 1,000s														
\$200 - 500by 20 / 50 / 80s	\$20,000 - 50,000by 2,000 / 5,000 / 8,000s														
\$500 - 1,000by 50s	\$50,000 - 100,000by 5,000s														
\$1,000 - 2,000by 100s	\$100,000 - 200,000by 10,000s														
\$2,000 - 5,000by 200 / 500 / 800s	above \$200,000at the auctioneer's discretion														
\$5,000 - 10,000by 500s	The auctioneer has discretion to split any bid at any time.														
Customer Number		Title													
First Name		Last Name													
Company name (to be invoiced if applicable)															
Address															
City		County / State													
Post / Zip code		Country													
Telephone mobile		Telephone daytime													
Telephone evening		Fax													
<p><u>Telephone bidders:</u> indicate primary and secondary contact numbers by writing ① or ② next to the telephone number.</p>															
E-mail (in capitals) _____															
By providing your email address above, you authorize Bonhams to send you marketing materials and news concerning Bonhams and partner organizations. Bonhams does not sell or trade email addresses.															
I am registering to bid as a private client <input type="checkbox"/>		I am registering to bid as a trade client <input type="checkbox"/>													
Resale: please enter your resale license number here _____ We may contact you for additional information.															

SHIPPING	
Shipping Address (if different than above):	
Address: _____	Country: _____
City: _____	Post/ZIP code: _____

Please note that all telephone calls are recorded.

Type of bid (A-Absentee, T-Telephone)	Lot no.	Brief description (In the event of any discrepancy, lot number and not lot description will govern.) If you are bidding online there is no need to complete this section.	MAX bid in US\$ (excluding premium and applicable tax) Emergency bid for telephone bidders only*

You instruct us to execute each absentee bid up to the corresponding bid amount indicated above.

* Emergency Bid: A maximum bid (exclusive of Buyer's Premium and tax) to be executed by Bonhams **only** if we are unable to contact you by telephone or should the connection be lost during bidding.

BY SIGNING THIS FORM YOU AGREE THAT YOU HAVE READ AND UNDERSTAND OUR CONDITIONS OF SALE AND SHALL BE LEGALLY BOUND BY THEM, AND YOU AGREE TO PAY THE BUYER'S PREMIUM, ANY APPLICABLE TAXES, AND ANY OTHER CHARGES MENTIONED IN THE BUYER'S GUIDE OR CONDITIONS OF SALE. THIS AFFECTS YOUR LEGAL RIGHTS.	
Your signature:	Date:

INDEX

ENTRY	LOT NO'S	ENTRY	LOT NO'S
Aalto, Alvar	134	Lovera, James	159
Acconci, Vito	272	Lynch, David	271
Adnet, Jacques	61, 95	Maloof, Sam	233, 234, 235, 236
Andreson, Laura	151	Marioni, Dante	259, 260, 261, 262
Arbus, André	60	Marquis, Richard	280, 281, 282
Argy-Rousseau, Gabriel	52, 53	Marx, Samuel	59
Bailey, Maurice	181	Massier, Clement	5
Barovier, Ercole	172	Matthai, Diego	153
Bianconi, Fulvio	170, 173	McQuilkin, Bruce	221, 225
Blomdahl, Sonja	73, 127, 277	Melgaard, Bjarne	252
Bugatti, Carlo	142	Mendez, Maria Teresa	67
Caldas, Zanini de Zanine	150	Mendoza, Pepe	133
Carpenter, James	293	Moje, Klaus	294
Cederquist, John	239	Monteverdi-Young	62
Charpin, Pierre	263	Moore, Benjamin	257
Chiesa, Pietro	93	Moroles, Jesus Bautista	253
Chihuly, Dale	76, 218, 237, 275, 300, 301	Morris, William C.	274
Colombo, Joe	106	Mouthrop, Edward	231, 232
Conover, Claude	109	Myers, Joel Philip	289
Coronel, Raul	226	Nason, Ermanno	166
Cressey, David	223	Natzler, Gertrud & Otto	108
Da Ros, Antonio	167	Nelson, George	139
Daum, Frères	32, 33, 34, 36, 38	Newson, Marc	242, 243, 244
De Larios, Dora	254	Notkin, Richard	246, 247, 248, 249
Deskey, Donald	161	Pani, Arturo	155
Dickinson, John	185, 186, 187, 188, 189, 190, 191, 192, 193, 196, 197, 198, 199, 200, 201, 202, 203, 204, 205, 206, 207, 208, 209, 210, 211, 212, 214	Parzinger, Tommi	55
Eames, Charles & Ray	87, 88, 89, 90	Perkins, Flo	292
Earl, Jack	245	Piechaud, Guillaume	305
Eek Hein, Piet	163	Platner, Warren	135
Ernst, Max	132	Poli, Flavio	174, 175
Evans, Paul	176, 177	Prober, Harvey	98
Exnar, Jan	304	Prost, Maurice	27
Falkenstein, Claire	164	Prutscher, Otto	7
Fantoni, Marcello	144	Redmile, Anthony	64, 66, 68
Federighi, Christine	131	Rie, Lucie	107
Flora C. Mace & Joey Kirkpatrick	291	Robsjohn-Gibblings, T.H.	75, 77
Fornasetti, Piero	96	Royal, Richard	256
Frank, Josef	57	Ruffner, Ginny Martin	296, 297
Frankl, Paul T.	20	Scapinelli, Giuseppe	63, 126, 143, 165
Frishmuth, Harriet Whitney	28	Schwarz, David J.	290
Fuga, Anzolo	194, 195	Shire, Peter	266, 267, 268, 269
Fujita, Kyohei	250, 251	Shulman, Julius	21, 22, 23, 24, 39, 40, 41, 42, 78, 79, 80, 81, 82, 83, 84, 85, 102, 121, 122, 123, 124, 137
Gardella, Ignazio	146	Siegel, Gustav	56
Gaspari, Luciano	147, 148	Silva Bruhns, Ivan da	26
Goeritz, Mathias	154	Sottsass, Ettore	265, 270
Haines, William	65	Stamos, Theodoros	72
Hebert, Louis Philippe	2	Statom, Therman	273
Hoglund, Erik	100	Stocksdale, Bob	229
Hosoe, Isao	238	T., Tunico	145
Ingrand, Max	94	Tagliapietra, Lino	74
Irvin, Albert	141, 149, 162	Takamori, Akio	241
Jacobsen, Arne	103	Taylor, Michael	216, 217, 219, 220
Jeanneret, Pierre	99	Tiffany Studios	13, 14, 15, 16, 18
Jensen, Helge Vestergaard	129	Toso, Arnaldo	184
Jolley, Richard	295	Toso, Giusto	169
Kagan, Vladimir	178, 179	Trinkley, Karla	302
Kallenberger, Kreg	101	van Erp, Dirk	11
Kaneko, Jun	255	Venini	171
Kipp, Maria	125	Voukos, Peter	110, 111, 112, 113, 114, 115, 116, 117, 118, 119, 120
Kusumoto, Mariko	288	Wabbes, Jules	140
Kyle, Frank	130	Warashina, Patti	240
Lalique, René	47, 48, 49, 50, 51, 54	Wegner, Hans J.	91, 92, 104, 136
Lamonte, Karen	303	Weinberg, Steven	283, 284, 285, 286, 287
Lane, Doyle	105	Wirkkala, Tapio	276
LaScola, Judith	279	Wood, Beatrice	227, 228
Laverne, Philip and Kelvin	180	Wormley, Edward	160
Leleu, Jules	45	Zamecnikova, Dana	258
Leslie Ortiz, Luis Montoya &	298	Zuccheri, Toni	183
Lindstrand, Vicke	182	Zynsky, Mary Ann (Toots)	278



1793

Bonhams

7601 W. Sunset Boulevard
Los Angeles CA 90046

+1 (323) 850 7500

+1 (323) 850 6090 fax

