

JEWELLERY

Wednesday 14 March 2018



Bonhams

MONTPELIER STREET • KNIGHTSBRIDGE



JEWELLERY

Wednesday 14 March 2018 at 11am
Knightsbridge, London

BONHAMS

Montpelier Street
Knightsbridge
London SW7 1HH
www.bonhams.com

VIEWING

Sunday 11th March
11.00 – 15.00
Monday 12th March
09.30 – 16.30
Tuesday 13th March
09.30 – 16.30
Wednesday 14th March
09.00 – 10.00, by appointment only

TRADE VIEW

Thursday 8th March
09.30 – 16.30, by appointment

BIDS

+44 (0) 20 7447 7447
+44 (0) 20 7447 7401 fax
bids@bonhams.com
To bid via the internet please visit
www.bonhams.com

Please note that bids should be submitted no later than 24 hours prior to the sale. New bidders must also provide proof of identity when submitting bids. Failure to do this may result in your bids not being processed.

Bidding by telephone will only be accepted on a lot with a lower estimate in excess of £500.

LIVE ONLINE BIDDING IS AVAILABLE FOR THIS SALE

Please email bids@bonhams.com with "Live bidding" in the subject line 48 hours before the auction to register for this service.

ENQUIRIES

Carole Gordon FGA DGA
Rachel Bailey FGA DGA
Jennifer Tonkin FGA
Jemima Chamberlain-Adams FGA
Tessa Rowse FGA
+44 (0)20 7393 3852
jewellery@bonhams.com

ADMINISTRATION

Janina Elias G.G.
+44 (0)20 7393 3970

PRESS ENQUIRIES

press@bonhams.com

SHIPPING ENQUIRES

Janina Elias G.G.
+44 (0)20 7393 3970
janina.elias@bonhams.com

CUSTOMER SERVICES

Monday to Friday
8.30am – 6pm
+44 (0) 20 7447 7447

SALE NUMBER:

24567

CATALOGUE:

£12

Please see back of catalogue for important notice to bidders

ILLUSTRATIONS

Front cover illustration: Lot 275
Inside front cover illustration: Lot 221
Back cover illustration: Lot 273
Inside back cover illustration: Lot 198

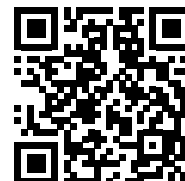
Watches

Important Notice Regarding Importation into the United States of Corum, Franck Muller, Piaget and Rolex watches.
Bonhams cannot arrange for the delivery of Corum, Franck Muller, Piaget, Tudor and Rolex watches into The United States. The buyer or designated agent may collect the property in the country of sale.
Please also note that in some circumstances we are unable to ship the watch with its strap due to certain import restrictions.

Please note that irrespective of origin, jadeite and rubies (and any jewellery pieces that contain them) may now be imported into the United States.

IMPORTANT INFORMATION

The United States Government has banned the import of ivory into the USA. Lots containing ivory are indicated by the symbol Φ printed beside the lot number in this catalogue.



Bonhams 1793 Limited

Registered No. 4326560
Registered Office: Montpelier Galleries
Montpelier Street, London SW7 1HH

+44 (0) 20 7393 3900
+44 (0) 20 7393 3905 fax

Bonhams International Board

Robert Brooks Co-Chairman,
Malcolm Barber Co-Chairman,
Colin Sheaf Deputy Chairman,
Matthew Girling CEO,
Patrick Meade Group Vice Chairman,
Jon Baddeley, Rupert Banner, Geoffrey Davies,
Jonathan Fairhurst, Asaph Hyman, James Knight,
Caroline Oliphant, Shahin Virani,
Edward Wilkinson, Leslie Wright.

Bonhams UK Ltd Directors

Colin Sheaf Chairman,
Harvey Cammell Deputy Chairman,
Antony Bennett, Matthew Bradbury,
Lucinda Bredin, Simon Cottle, Andrew Currie,
Jean Ghika, Charles Graham-Campbell,
Matthew Haley, Richard Harvey, Robin Hereford,
David Johnson, Charles Lanning, Grant Macdougall

Gordon McFarlan, Andrew McKenzie,
Simon Mitchell, Jeff Muse, Mike Neill,
Charlie O'Brien, Giles Peppiatt, India Phillips,
Peter Rees, John Sandon, Tim Schofield,
Veronique Scorer, Robert Smith, James Stratton,
Ralph Taylor, Charlie Thomas, David Williams,
Michael Wynell-Mayow, Suzannah Yip.



1

A GEM-SET 'B.ZERO1' PENDANT NECKLACE, BY BULGARI

The sprung cylinder issuing a cable-link tassel with hoop and gem-set terminals, suspended from a disc-shaped surmount on a cable-link chain, set at intervals with disc-shaped spacers and amethyst and peridot beads, *signed Bulgari*, lengths: chain 46.1cm (adjustable), pendant 7.2cm, maker's case

£1,800 - 2,500 2,000 - 2,800

2

A PAIR OF GEM-SET 'B.ZERO1' EARRINGS, BY BULGARI

Each tapering surmount set with a brilliant-cut diamond, suspending a similarly-set sprung cylinder and cable-link tassel, with hoop and gem-set terminals, *signed Bulgari*, length 7.6cm

£1,800 - 2,500 €2,000 - 2,800

3

AN AMETHYST RING, BY TIFFANY

Set with an octagonal step-cut amethyst, to a ropetwist mount, *signed Tiffany & Co.*, ring size K½

£800 - 1,200 €900 - 1,300

4

A 'LES MUST DE CARTIER' RING, BY CARTIER

Of tricoloured design, composed of three interlocking 18 carat gold bands, *signed Cartier*, Swiss assay mark, European convention mark, accompanied by a certificate of authenticity, ring size approx. K

£800 - 1,200 €900 - 1,300



5
AN AQUAMARINE, SAPPHIRE AND DIAMOND RING, BY PALOMA PICASSO FOR TIFFANY
 The front inset with two elongated step-cut aquamarines between angled shoulders set with step-cut diamonds and sapphires, *signed Paloma Picasso, Tiffany & Co, ring size L*

£1,500 - 2,000 €1,700 - 2,200

6
A GEM-SET NECKLACE
 The frontispiece designed as a geometric panel of brilliant-cut diamonds between a shield-shaped orange topaz and a similarly-cut tsavorite garnet, on a tapering fancy-link collar, *diamonds approx. 0.35ct total, length 42.2cm*

£1,000 - 1,500 €1,100 - 1,700

7
A DIAMOND SINGLE-STONE PENDANT
 Set with a brilliant-cut diamond within an openwork target surround, on a faceted cable-link chain, *diamond approx. 0.70ct, lengths: pendant 1.7cm, chain 50.1cm*

£800 - 1,200 €900 - 1,300

8
A CITRINE AND DIAMOND TORC BANGLE, BY ADLER
 The reeded bangle with fancy-cut citrine terminals, accented by rows of brilliant-cut diamonds, *diamonds approx. 0.45ct total, signed Adler, inner diameter 6.3cm*

£1,200 - 1,500 €1,300 - 1,700

9
A FANCY-LINK GOLD NECKLACE, BY GARRARD, 2008
 Designed as a continuous series of realistically modelled skulls, mounted in 18 carat yellow gold, *UK hallmark, signed Garrard, length 58.2cm*

£1,000 - 1,500 €1,100 - 1,700





10

A DIAMOND 'GARDEN' NECKLACE, BY TIFFANY

The flowerhead set with pear-shaped rose-cut diamond petals, accented by brilliant-cut diamonds, on a trace-link chain, *signed Tiffany & Co., lengths: pendant 1.5cm, chain 40.4cm*

£1,000 - 1,500

€1,100 - 1,700

11

A PAIR OF DIAMOND EARSTUDS

Each set with a brilliant-cut diamond, *diamonds approx. 1.20cts total*

£1,200 - 1,500

€1,300 - 1,700

12

A DIAMOND FANCY-LINK NECKLACE, BY ADLER

Designed as a uniform series of brilliant-cut diamond hoops, *diamonds approx. 6.70cts total, signed Adler, length 68.1cm (adjustable), maker's pouch*

£2,000 - 3,000

€2,200 - 3,400

Accompanied by a copy of an insurance document from Adler, Geneva, dated 13th January 2014.

13

A DIAMOND DRESS RING

Of openwork heart design, set throughout with brilliant-cut diamonds, *diamonds approx. 1.40cts total, ring size J*

£800 - 1,200

€900 - 1,300

14

A DIAMOND RING AND CUFFLINK SUITE, BY GARRARD, 2007 AND 2011

The 18 carat white gold ring of shield design, pavé-set with circular-cut treated black diamonds and brilliant-cut diamonds in a cross formation, the cufflinks en suite, *diamonds approx. 1.00ct total, signed Garrard, London hallmarks, maker's marks, ring size L, cufflink plaque length 2.1cm, cufflinks with maker's case and box (2)*

£1,500 - 2,000

€1,700 - 2,200





15

A PAIR OF SILVER AND PINK SAPPHIRE 'HORN AND THORN' CUFFLINKS, BY SHAUN LEANE, 2011

Double-sided, designed as a realistically modelled horn, the base accented by circular-cut pink sapphires, with a thorn terminal, with cable-link connectors, *maker's marks SL, London hallmarks, length of each terminal 3.5cm, maker's box*

£300 - 400

€340 - 450

Shaun Leane, born on 8th July 1969, is a British jewellery designer best known for his sculptural pieces created for Alexander McQueen. His jewellery brand has won the UK Jewellery Designer of the Year award four times.

16

A DIAMOND SINGLE-STONE RING, BY CARTIER

Set with a brilliant-cut diamond, weighing 0.70 carat, *signed Cartier, maker's mark, numbered, with certificate of authenticity, ring size J½, maker's pouch, case, box and bag*

£2,000 - 3,000

€2,200 - 3,400

Accompanied by a report from GIA stating that the diamond, weighing 0.70 carat, is G colour, VVS2 clarity. Report number 1139929228, dated 7th September 2012.

17

A DIAMOND 'MATASSA' PENDANT, BY DE GRISOGONO

The openwork spiral knot set throughout with brilliant-cut diamonds, mounted in 18 carat white gold, on a black cord with an openwork spiral slider, *diamonds approx. 3.10cts total, signed de Grisogono, numbered, Swiss assay mark, European convention mark, lengths: pendant 3.2cm, cord approx. 75.0cm, maker's case and box*

£4,000 - 6,000

€4,500 - 6,700

18

TWO DIAMOND RINGS

1st: The eternity ring pavé-set throughout with brilliant-cut diamonds, 2nd: Set to the front with a row of brilliant-cut diamonds, *diamonds in 1st approx. 1.10cts total, diamonds in 2nd approx. 1.30cts total, ring sizes: 1st J, 2nd M (2)*

£1,000 - 1,500

€1,100 - 1,700

19

A RUBY DRESS RING

Designed as a sinuous serpent pavé-set throughout with circular-cut rubies, the eyes set with similarly-cut green garnets, *ring size K*

£2,000 - 3,000

€2,200 - 3,400



19

20

A RUBY AND DIAMOND NOVELTY BROOCH

Designed as a Roman chariot with bicoloured detailing, accented by single-cut diamonds and a circular-cut ruby, *length 5.4cm*

£1,000 - 1,500

€1,100 - 1,700

21

No lot

22

**A MID-CENTURY RUBY AND DIAMOND JARRETIÈRE
BRACELET WATCH, BY JOSARN**

Designed as a woven strap, with floral, foliate and star-shaped motifs set with circular-cut rubies, brilliant and single-cut diamonds, the strap opening to reveal a square dial with Arabic numerals and baton hourmarkers, *diamonds approx. 0.60ct total, dial signed Josarn, length 25.7cm*

£1,500 - 2,000

€1,700 - 2,200

23

A RUBY AND DIAMOND SPRAY BROOCH AND EARRING SUITE

Of scrolling design, set with oval ruby cabochons and brilliant-cut diamonds, the earrings en suite, *diamonds approx. 1.30cts total, lengths: brooch 5.0cm, earrings 4.0cm (2)*

£1,000 - 1,500

€1,100 - 1,700

24

A DIAMOND FIVE-STONE RING

Set with a graduated row of old brilliant and cushion-shaped diamonds, *diamonds approx. 1.85cts total, ring size Q*

£1,000 - 1,500

€1,100 - 1,700





25

A PAIR OF SAPPHIRE AND DIAMOND EARCLIPS

Each designed as a tiered cluster set with circular-cut sapphires and brilliant-cut diamonds, mounted in 18 carat white and yellow gold, *diamonds approx. 0.30ct total, London import marks, length 1.9cm*

£1,200 - 1,500 €1,300 - 1,700

26

A SYNTHETIC RUBY AND DIAMOND SPRAY BROOCH, CIRCA 1945

Each flowerhead set with a cluster of brilliant-cut diamonds, the petals accented by similarly and old brilliant-cut diamonds, the stem set with a graduated row of calibr -cut synthetic rubies, with an old brilliant and brilliant-cut diamond ribbon, *diamonds approx. 2.15cts total, length 7.5cm*

£1,500 - 2,000 €1,700 - 2,200

27

A MID-CENTURY RUBY AND DIAMOND BRACELET

The textured mesh strap set with diagonal rows of brilliant-cut diamonds and circular-cut rubies, *diamonds approx. 1.05cts total, French import marks, length 19.6cm*

£2,000 - 3,000 €2,200 - 3,400

28

A DIAMOND THREE-STONE RING

Set with three old brilliant-cut diamonds, *diamonds approx. 1.70cts, 1.70cts and 2.70cts, ring size Q*

£8,000 - 10,000 €9,000 - 11,000

29

A RUBY BROOCH, BY VAN CLEEF & ARPELS, CIRCA 1945

The flower with realistically modelled leaves issuing an openwork flowerhead with circular-cut ruby accents, *signed Van Cleef & Arpels, numbered, maker's marks, French assay marks, length 4.5cm*

£1,800 - 2,200 €2,000 - 2,500

30

A DIAMOND CLUSTER RING

The two obliquely-set pear-shaped diamonds with marquise and brilliant-cut diamonds to either side, *principal diamonds approx. 1.20cts or 1.30cts, remaining diamonds approx. 1.30cts total, ring size L*

£5,000 - 7,000 €5,600 - 7,900

31

A DIAMOND SPRAY BROOCH

The scrolling foliage, set throughout with pear-shaped, marquise and baguette-cut diamonds, *diamonds approx. 2.70cts total, length 5.0cm*

£800 - 1,200 €900 - 1,300

32

A CULTURED PEARL AND DIAMOND CLUSTER RING

The 10.0mm cultured pearl within a double surround of brilliant-cut diamonds, between similarly-set bifurcated shoulders, *diamonds approx. 4.60cts total, ring size I (sizing beads)*

£2,000 - 3,000 €2,200 - 3,400

33

A CULTURED PEARL NECKLACE WITH A SAPPHIRE AND DIAMOND CLASP/BROOCH, CIRCA 1960

The two rows of 7.2mm-9.7mm cultured pearls on a detachable clasp/ brooch of stylised flowerhead design, set with brilliant and baguette-cut diamonds and pear-shaped sapphires, *principal diamond approx. 2.20cts, remaining diamonds approx. 4.70cts total, length of shortest strand 55.4cm*

£6,000 - 8,000 €6,700 - 9,000

34

A SAPPHIRE AND DIAMOND BROOCH AND EARRING SUITE, 1969

The stylised spray set throughout with brilliant and single-cut diamonds, accented by oval-cut sapphires, mounted in 18 carat white gold, the earrings en suite, *diamonds approx. 2.50cts total, brooch with UK hallmark, lengths: brooch 4.4cm, earrings 3.3cm (2)*

£2,000 - 3,000 €2,200 - 3,400

30

31

32

33

34



35

AN EMERALD AND DIAMOND DRESS RING

Of bombé form, set centrally with a step-cut emerald, the surround pavé-set with brilliant-cut diamonds, mounted in platinum, *diamonds approx. 0.80ct total, partial London hallmark, ring size L*

£1,200 - 1,500 €1,300 - 1,700

36

A PAIR OF CULTURED PEARL AND DIAMOND EARRINGS

Each designed as a flowerhead, set with a 7.4mm or 7.6mm cultured pearl within a surround of brilliant-cut diamonds, *diamonds approx. 0.60ct total, length 1.2cm*

£800 - 1,200 €900 - 1,300

37

A DIAMOND AND CULTURED PEARL NECKLACE

Designed as a graduated series of brilliant and single-cut diamonds, the front accented by marquise-cut diamonds and a central pear-shaped, brilliant and marquise-cut diamond floral cluster, terminating with a 19.1mm x 13.9mm cultured pearl drop, *diamonds approx. 11.50cts total, length 37.7cm*

£5,000 - 7,000 €5,600 - 7,900

38

AN EMERALD RING

The cut-cornered step-cut emerald, weighing 10.28 carats, within a four-claw setting, *ring size M*

£10,000 - 12,000 €11,000 - 13,000

Accompanied by a report from GCS stating that the emerald is of Colombian origin with indications of moderate clarity enhancement. Report number 78128-00, dated 30th October 2017.

39

AN EMERALD AND DIAMOND SPRAY BROOCH, CIRCA 1955

The foliate spray set throughout with brilliant and single-cut diamonds, accented by pear-shaped and marquise-cut emeralds, with brilliant-cut diamond buds, *diamonds approx. 4.30cts total, length 5.6cm*

£3,000 - 4,000 €3,400 - 4,500

40

AN EMERALD AND DIAMOND BALLERINA RING, 1977

The step-cut emerald within an undulating surround of tapered baguette and brilliant-cut diamonds, mounted in platinum, *diamonds approx. 4.60cts total, partial London hallmark, ring size L*

£3,500 - 4,000 €3,900 - 4,500



41
A DIAMOND NECKLACE

Formed as a series of bicoloured links, the front accented by brilliant-cut diamonds, *diamonds approx. 0.65ct total, length 41.1cm*

£800 - 1,200 €900 - 1,300

42
A TOPAZ 'PIRAMIDE' RING AND EARRING SUITE, BY BULGARI, 1998

The bombé band with a central sugarloaf blue topaz in a quatrefoil setting, the earrings en suite, both mounted in 18 carat bicoloured gold, *signed Bulgari, numbered, maker's marks, London import marks, ring size M, earring length 2.5cm, maker's case (2)*

£2,500 - 3,000 €2,800 - 3,400

43
A DIAMOND-SET 'KEY' BROOCH/PENDANT, BY GRIMA, CIRCA 2002

The textured openwork 'key', held by a brushed 'ribbon' with brilliant-cut diamond highlights, *signed Grima, length 9.3cm, maker's case*

£1,500 - 2,000 €1,700 - 2,200

Andrew Grima collected antique keys. He copied one of the keys from his collection to make this brooch. This is a unique one-off piece.

44
A 'TRINITY' BANGLE, BY CARTIER

Composed of three interlocking 18 carat tricoloured gold bangles, *signed Cartier, numbered, Swiss assay mark, European convention mark, inner diameter 6.6cm*

£4,000 - 6,000 €4,500 - 6,700





45



46

45

A FANCY-LINK COLLAR NECKLACE

Designed as a tricoloured plait, formed of polished and brushed panels, *inner diameter approx. 11.9cm*

£2,500 - 3,500 €2,800 - 3,900

46

A JASPER AND OPAL BROOCH, BY GRIMA, 1995

The furling Australian jasper 'leaf', of tiger-stripe appearance, within a polished frame with brushed sides, set at the centre with a marquise-shaped Australian opal within a textured frame, *signed Grima, length 9.8cm, maker's case*

£1,500 - 2,000 €1,700 - 2,200

47

A CHRYSOPRASE TORC BANGLE, BY CARTIER, AND A FANCY-LINK BRACELET

1st: Of tricoloured ropetwist design with green chrysoprase cabochon terminals, 2nd: Formed as a series of rectangular polished and textured integral links, *1st signed Cartier and numbered, 1st inner diameter 6.1cm, 2nd length 19.1cm (2)*

£1,400 - 1,800 €1,600 - 2,000



47

For details of the charges payable in addition to the final Hammer Price of each Lot please refer to paragraphs 7 & 8 of the Notice to Bidders at the back of the catalogue.

48

A DIAMOND DRESS RING

Designed as tiered clusters of princess-cut diamonds, mounted in 18 carat white gold, *diamonds approx. 2.00cts total, London hallmark, ring size R*

£800 - 1,200 €900 - 1,300

49

A PAIR OF DIAMOND EARSTUDS

Each set with an oval-cut diamond, *diamonds approx. 1.00ct total*

£800 - 1,200 €900 - 1,300

50

A FIVE-STRAND OPAL BEAD NECKLACE

The graduated rows of 3.0mm-6.5mm opal beads, spaced at intervals with brilliant-cut diamond rondels, to a similarly-cut diamond clasp, *diamonds approx. 0.75ct total, length of shortest strand 45.0cm*

£1,000 - 1,200 €1,100 - 1,300

51

A PAIR OF DIAMOND PENDENT EARRINGS

Each pear-shaped diamond within a surround of brilliant-cut diamonds, suspended from a similarly-set surmount, mounted in 18 carat white gold, *diamonds approx. 2.35cts total, UK hallmark, length 2.2cm*

£800 - 1,200 €900 - 1,300

52

A DIAMOND RING

Designed as five articulated rows of brilliant-cut diamonds, *diamonds approx. 4.00cts total, ring size O*

£2,800 - 3,400 €3,100 - 3,800

53

A DIAMOND SINGLE-STONE RING

Set with a princess-cut diamond, weighing 1.51 carats, *ring size J½*

£2,000 - 3,000 €2,200 - 3,400

Accompanied by a report check from IGI stating that the diamond is F colour, VVS2 clarity. Report check number S3B88979.

54

A DIAMOND 'NOUVELLE VAGUE' RING, BY CARTIER

Of crossover design, one band set with brilliant-cut diamonds, mounted in 18 carat white gold, *diamonds approx. 0.95ct total, signed Cartier, maker's mark, numbered, Swiss assay mark, European convention mark, ring size L (sizing beads)*

£1,200 - 1,500 €1,300 - 1,700

55

AN OPAL AND DIAMOND CLUSTER RING

Set with an oval opal cabochon within a tiered double surround of brilliant-cut diamonds, *diamonds approx. 2.50cts total, ring size M*

£800 - 1,200 €900 - 1,300

56

A PAIR OF DIAMOND EARSTUDS

Each set with a step-cut diamond, *diamonds approx. 1.00ct total*

£800 - 1,200 €900 - 1,300

57

AN OPAL AND DIAMOND CLUSTER PENDANT

Set with a pear-shaped opal cabochon, within a surround of baguette, pear and marquise-cut diamonds, on a fancy-link chain, *diamonds approx. 1.70cts total, lengths: pendant 4.5cm, chain 46.5cm*

£1,500 - 2,000 €1,700 - 2,200

58

A DIAMOND SINGLE-STONE RING

Set with a marquise-cut diamond, weighing 1.72 carats, *ring size K*

£4,000 - 6,000 €4,500 - 6,700

Accompanied by a report from GCS stating that the principal diamond is I colour, SI2 clarity. Report number 5777-8632, dated 26th January 2017.





59
A DIAMOND DRESS RING, A GEM-SET RING AND A PAIR OF DIAMOND EARRINGS
 1st: The tapering band with ropetwist decoration, set centrally with a brilliant-cut diamond between two pear-shaped diamonds, 2nd: Set to the front with a cluster of vari-cut gemstones, 3rd: Each designed as two fluted hoops accented by brilliant-cut diamonds, *diamonds approx. 1.90cts total, ring sizes: 1st N (leading edge), 2nd N½, earring length 2.8cm (3)*

£1,200 - 1,500 €1,300 - 1,700

60
A FANCY-LINK FRINGE NECKLACE
 Formed as a series of openwork triangles, *length 41.1cm*

£800 - 1,200 €900 - 1,300

61^Y
A PAIR OF CORAL AND DIAMOND CHANDELIER EARRINGS, BY FARAONE
 Each articulated cascade of oval coral *corallium rubrum* cabochons, accented throughout with brilliant-cut diamonds, *diamonds approx. 2.90cts total, signed Faraone, length 7.3cm*

£6,000 - 8,000 €6,700 - 9,000

This lot will be subject to USA Fish and Wildlife regulations if it is to be imported into the USA.

62
AN AMETHYST RING, BY BULGARI
 The oval amethyst cabochon in a tapering bombé mount decorated with triangular motifs, set throughout with brilliant-cut diamonds, *diamonds approx. 3.70cts total, signed Bulgari, ring size M (leading edge)*

£5,000 - 7,000 €5,600 - 7,900



63

A CULTURED PEARL AND DIAMOND DRESS RING

Formed as an openwork lattice set with 5.8mm-8.4mm cultured pearls and brilliant-cut diamonds, mounted in 18 carat yellow gold, *diamonds approx. 0.40ct total, London hallmark, ring size M (leading edge)*

£800 - 1,200

€900 - 1,300

64

A SAPPHIRE AND DIAMOND NECKLACE

The pear-shaped sapphire cabochon in a bicoloured collet-setting, between two brilliant-cut diamonds, on a flattened curb-link chain, *length 46.0cm*

£4,000 - 6,000

€4,500 - 6,700

65

A FANCY-LINK BRACELET

Designed as a woven series of interlocking polished fancy-links, *19.4cm*

£800 - 1,200

€900 - 1,300

66

A STAR SAPPHIRE AND DIAMOND DRESS RING, BY JULIUS COHEN

The oval star sapphire cabochon within a wide textured tapering mount with polished borders, set throughout with brilliant-cut diamonds, *diamonds approx. 1.40cts total, signed Julius Cohen, ring size N½*

£4,000 - 6,000

€4,500 - 6,700



68



67

67
A RUBY AND DIAMOND DRESS RING

Of geometric design, set with single-cut diamonds and an arc of step-cut ruby accents, *diamonds approx. 0.55ct total, ring size P*

£1,000 - 1,500 €1,100 - 1,700

68
A DIAMOND DOUBLE-CLIP BROOCH, CIRCA 1950

Of scroll design with knifewire detailing, set throughout with single-cut diamonds, accented by baguette and brilliant-cut diamonds, *diamonds approx. 1.50cts total, length 6.1cm*

£1,500 - 2,000 €1,700 - 2,200



69



71



70

69
A DIAMOND BRACELET, CIRCA 1960

The articulated bracelet composed of repeating plaques of scroll and buckle design, pavé-set throughout with brilliant-cut diamonds, *diamonds approx 19.00cts total, length 18.5cm*

£8,000 - 12,000 €9,000 - 13,000

70
A DIAMOND DOUBLE-CLIP BROOCH, BY BIRKS, CIRCA 1950

Of scrolling floral and foliate design, set throughout with brilliant and baguette-cut diamonds, *diamonds approx. 5.35cts total, signed Birks, length 6.4cm, maker's case*

£2,500 - 3,000 €2,800 - 3,400

71
A DIAMOND TWO-STONE RING

Obliquely-set with two old brilliant-cut diamonds, between similarly-set crossover shoulders, *principal diamonds approx. 1.75cts or 1.80cts, ring size M*

£4,000 - 6,000 €4,500 - 6,700



72

A DIAMOND PLAQUE BROOCH, CIRCA 1950

The openwork geometric plaque, set throughout with baguette, old brilliant and single-cut diamonds, *diamonds approx. 7.55cts total, one diamond deficient, later pendant fitting, length 6.1cm*

£2,500 - 3,000 €2,800 - 3,400

73

A SYNTHETIC SAPPHIRE AND DIAMOND BRACELET

The articulated strap designed as a series of openwork hexagonal motifs set with old brilliant-cut diamonds, between two rows of step-cut synthetic sapphires, mounted in white gold, *diamonds approx. 4.80cts total, Austrian assay mark, indistinct maker's mark, length 17.4cm*

£2,500 - 3,500 €2,800 - 3,900

74

AN ART DECO DIAMOND BRACELET, CIRCA 1920

The graduated strap of openwork geometric design, set throughout with old brilliant and single-cut diamonds, mounted in platinum, *diamonds approx. 5.90cts total, accompanied by two additional links, length 17.6cm (3)*

£1,500 - 2,500 €1,700 - 2,800

75

AN EARLY 20TH CENTURY DIAMOND BROOCH

The circular openwork plaque millegrain-set throughout with rose-cut diamonds, with a central old brilliant-cut diamond highlight, mounted in platinum, *principal diamond approx. 0.40ct, later brooch fitting, length 3.6cm*

£1,500 - 2,000 €1,700 - 2,200

76

A NATURAL PEARL AND DIAMOND RING, CIRCA 1920

Designed as two opposing 9.0mm-9.1mm x 6.4mm and 9.1mm-9.2mm x 7.7mm natural pearls, between tapering shoulders pavé-set with single-cut diamonds, mounted in platinum, *diamonds approx. 0.70ct total, French import mark, ring size J*

£1,000 - 1,200 €1,100 - 1,300

Accompanied by a report from The Gem & Pearl Laboratory stating that the pearls are natural, freshwater. Report number 14621, dated 15th August 2017.



77

A PAIR OF DIAMOND EARSTUDS

Each set with a brilliant-cut diamond, *diamonds approx. 1.00ct total*

£800 - 1,200

€900 - 1,300

78

A DIAMOND RING

Set with a brilliant-cut diamond between trios of similarly-cut diamonds, mounted in 18 carat white gold, *diamonds approx. 1.00ct total, London hallmark, ring size P*

£800 - 1,200

€900 - 1,300

79

A PAIR OF CULTURED PEARL AND GEM-SET EARRINGS

Each designed as a cluster of vari-cut gemstones suspending a detachable drop, set with a princess and brilliant-cut diamond, terminating in a 13.0mm or 13.2mm cultured pearl of grey tint, *length 4.7cm*

£1,200 - 1,500

€1,300 - 1,700

80

80

A CULTURED PEARL NECKLACE

The single strand of 11.9mm cultured pearls of grey tint to a spherical clasp pavé-set with brilliant-cut diamonds, *length 40.2cm*

£1,000 - 1,500

€1,100 - 1,700

81

A DIAMOND HALF-HOOP ETERNITY RING

Channel-set to the front with a row of brilliant-cut diamonds, *diamonds approx. 0.65ct total, ring size Q*

£800 - 1,200

€900 - 1,300

82

A SAPPHIRE AND DIAMOND RING

The circular-cut sapphire within a surround of brilliant and single-cut diamonds, *ring size M*

£3,000 - 5,000

€3,400 - 5,600

Accompanied by a report from GCS stating that the sapphire, weighing approximately 4.30 carats, is natural, of Basaltic origin, with no indications of heat treatment. Report number 77105-49, dated 2nd June 2017.



83

THREE GEM-SET 'LEGACY BAND' RINGS, BY TIFFANY

1st: Set throughout with brilliant-cut diamonds, 2nd: Alternately-set with circular-cut rubies and brilliant-cut diamonds, 3rd: Alternately-set with similarly-cut diamonds and circular-cut sapphires, all mounted in platinum, *diamonds approx. 1.05cts total, all signed Tiffany & Co., maker's marks, London hallmarks, all ring size M, all with maker's cases and boxes (3)*

£1,500 - 2,000 €1,700 - 2,200

84

A GEM-SET BRACELET

Of tapering openwork design, set throughout with vari-shaped sapphire, emerald and ruby cabochons, accented by brilliant-cut diamonds, *diamonds approx. 1.40cts total, length 20.4cm*

£5,500 - 6,500 €6,200 - 7,300

85

A SAPPHIRE AND DIAMOND RING

The cushion-shaped sapphire, weighing 6.81 carats, between tapering shoulders set with baguette-cut diamonds, *ring size J½*

£4,000 - 6,000 €4,500 - 6,700

Accompanied by a report from GCS stating that the sapphire is of Basaltic origin, with no indications of heating. Report number 78125-55, dated 20 October 2017.

86

A PAIR OF DIAMOND EARSTUDS

Each set with a brilliant-cut diamond, *diamonds approx. 1.00ct total*

£800 - 1,200 €900 - 1,300



87

91

90

89

87

A RUBY AND DIAMOND SPRAY BROOCH

Designed as two intertwined flowers, each set throughout with single-cut diamonds, with an oval-shaped ruby to the centre, *diamonds approx. 1.80cts total, length 5.2cm*

£1,200 - 1,500 €1,300 - 1,700

88

No lot

89

A BRACELET WATCH, BY JAEGER-LE-COULTRE

The integral fancy-link strap with a central circular dial with Arabic numerals and baton hourmarkers, *dial signed Jaeger-Le Coultre, numbered, length 19.0cm*

£800 - 1,200 €900 - 1,300

90

A PAIR OF DIAMOND EARRINGS

Each of bombé form, pavé-set throughout with brilliant-cut diamonds, *diamonds approx. 5.45cts total, length 1.6cm*

£3,000 - 5,000 €3,400 - 5,600

91

A DIAMOND RING

Set with an old brilliant-cut diamond between graduations of baguette-cut diamonds, *principal diamond approx. 1.30cts, ring size M*

£1,200 - 1,800 €1,300 - 2,000

92

No lot

93

A RUBY AND DIAMOND BRACELET WATCH, BY LONGINES, 1957

The circular-cut dial with baton and numeral hourmarkers, on a woven strap with palmier-link borders, the clasp set with circular-cut ruby and brilliant-cut diamond clusters, mounted in 18 carat yellow gold, *dial and movement signed Longines, case and clasp with London hallmarks (latter rubbed), length 23.2cm, maker's case*

£3,000 - 5,000

€3,400 - 5,600

94

A RUBY AND DIAMOND CRESCENT BROOCH

Set with a graduated row of circular-cut rubies, between brilliant-cut diamond accents, *diamonds approx. 0.80ct total, length 3.5cm*

£2,500 - 3,000

€2,800 - 3,400

Accompanied by a report from GCS stating that the rubies are of Burmese origin, with no indications of heating. Report number 78137-37, dated 10 January 2018.

95

A NOVELTY BROOCH, BY TIFFANY

Modelled as a galloping horse, with a faceted onyx eye, *signed Tiffany, length 5.5cm, maker's case and pouch*

£1,000 - 1,500

€1,100 - 1,700





96



97



99



100

96

A DIAMOND PENDANT/BROOCH NECKLACE, CIRCA 1900

Of pierced circular form, set throughout with old brilliant and rose-cut diamonds, with a central glazed compartment revealing a portrait of a lady, painted on card, suspended from a fancy-link chain, mounted in platinum and gold, *diamonds approx. 0.40ct total, lengths: pendant 5.2cm, chain 39.2cm*

£1,000 - 1,500

€1,100 - 1,700

97

AN EMERALD AND DIAMOND CLUSTER RING

Set with a step-cut emerald within a scalloped surround millegrain-set with old brilliant-cut diamonds, *diamonds approx. 1.50cts total, ring size L*

£800 - 1,200

€900 - 1,300

98

No lot

99

AN EARLY 20TH CENTURY DIAMOND BRACELET

The graduated strap formed of openwork geometric links, set with old brilliant-cut diamonds, and rose-cut diamond accents, mounted in platinum, *old brilliant-cut diamonds approx. 4.40cts, length 18.1cm*

£2,500 - 3,500

€2,800 - 3,900

100

A DIAMOND PLAQUE RING, CIRCA 1930

The openwork cartouche set throughout with old brilliant-cut and cushion-shaped diamonds, between similarly-cut diamond shoulders, mounted in platinum, *diamonds approx. 1.60cts total, ring size 1½ (leading edge)*

£2,000 - 3,000

€2,200 - 3,400

101

A DIAMOND TWO-STONE RING

Obliquely-set with two rose-cut diamonds in illusion settings, with a scrolled row of similarly-cut diamonds between, *ring size I*

£1,500 - 2,000

€1,700 - 2,200

102

A MID-CENTURY DIAMOND WRISTWATCH

The rectangular dial set with baton and numeral hourmarkers, within a single-cut diamond surround, between tapering geometric links set with similarly, baguette and brilliant-cut diamonds, the bracelet designed as a series of box links engraved with floral motifs, with box and flattened curb-link safety chains, *diamonds approx. 1.25cts total, dial signed Sayposon, length 17.3cm (adjustable)*

£800 - 1,200

€900 - 1,300

103

A DIAMOND BRACELET

Designed as a series of openwork geometric links set with brilliant, single and rose-cut diamonds, *brilliant and single-cut diamonds approx. 2.70cts total, length 18.7cm*

£1,000 - 1,500

€1,100 - 1,700

104

A PAIR OF SAPPHIRE AND DIAMOND CLUSTER EARRINGS

Each set with a circular or oval-cut sapphire, framed by a surround of single-cut diamonds, *diamonds approx. 0.40ct total, length 1.1cm*

£800 - 1,200

€900 - 1,300

105

A DIAMOND BROOCH

The openwork brooch of stylised foliate design, millegrain-set throughout with old brilliant and single-cut diamonds, *diamonds approx. 2.00cts total, length 6.7cm*

£2,000 - 3,000

€2,200 - 3,400



106^Y**A PAIR OF CORAL BEAD NECKLACES**

Each strand composed of 5.7mm-9.2mm or 5.9mm-11.4mm coral *corallium rubrum* beads lengths 82.0cm and 84.5cm (2)

£1,000 - 1,500 €1,100 - 1,700

This lot will be subject to USA Fish and Wildlife regulations if it is to be imported into the USA.

107

A DIAMOND PENDANT/NECKLACE

Designed as a cross, set with five brilliant-cut diamonds, suspended from a continuous row of similarly-cut diamonds, *diamonds approx. 6.20cts total, lengths: pendant 3.0cm, necklace 41.3cm*

£8,000 - 12,000 €9,000 - 13,000

108

A PAIR OF DIAMOND PENDENT EARRINGS

Each stylised bow surmount, suspending a drop-shaped scrolling plaque, set to the centre with a pear-shaped rose-cut diamond, set throughout with similarly-cut diamonds, *length 5.2cm*

£3,000 - 4,000 €3,400 - 4,500

109

A DIAMOND RING

The central pear-shaped rose-cut diamond, within an openwork cartouche of scrolling design, set throughout with rose-cut diamonds, *ring size L½*

£1,500 - 2,000 €1,700 - 2,200

110

A PAIR OF ROCK CRYSTAL PENDENT EARRINGS, BY LALAOUNIS, AND A PAIR OF ROCK CRYSTAL AND DIAMOND PENDENT EARRINGS

1st: Each carved, crescent-shaped rock crystal, suspended from a polished Greek key motif, 2nd: Each rock crystal drop suspended from a series of geometric brilliant-cut diamond links, *diamonds approx. 0.60ct total, 1st with maker's marks, lengths: 1st 6.7cm, 2nd 7.3cm (2)*

£800 - 1,200 €900 - 1,300

111

A SAPPHIRE AND DIAMOND RING

The oval-cut padparadscha sapphire obliquely-set between tiered shoulders of brilliant-cut and pear-shaped diamonds to either side, some of yellow and brown tint, mounted in 18 carat white gold, *diamonds approx. 0.75ct total, diamonds untested for natural colour, maker's mark JF, London hallmark, ring size L*

£2,000 - 2,500 €2,200 - 2,800

112

A MOONSTONE AND GEM-SET DRESS RING

Of bombé design, set with a central moonstone cabochon, within a surround of similarly-cut grey and colourless moonstones, *ring size M*

£800 - 1,200 €900 - 1,300

113

A 'PARENTESI' BANGLE, BY BULGARI

The sprung bangle composed of interlocking bicoloured fancy-links, *signed Bulgari, inner diameter 5.3cm, maker's case*

£3,000 - 4,000 €3,400 - 4,500

114^Y**A GEM-SET DRESS RING**

Of bombé design, set to the centre with a rock crystal cabochon over a mother-of-pearl ground, within a surround of faceted moonstones, *ring size M (leading edge)*

£800 - 1,200 €900 - 1,300

Please note this lot will be subject to USA Fish and Wildlife regulations if imported into the USA.



107



109



108



110



112



111



110



113



114

115

A CULTURED PEARL CHOKER WITH A DIAMOND CLASP

Designed as a two row 8.0mm cultured pearl choker to an openwork clasp pavé-set with brilliant-cut diamonds, *diamonds approx. 0.75ct total, length 33.8cm*

£800 - 1,200 €900 - 1,300

116

A CULTURED PEARL AND DIAMOND BROOCH

The openwork flowerhead set with a central 9.8mm cultured pearl, the petals set with brilliant-cut diamonds, *diamonds approx. 3.20cts total, length 4.5cm*

£800 - 1,200 €900 - 1,300

117

A GEM-SET DRESS RING

Set with a sugarloaf amethyst, the claws, gallery and bifurcated shoulders pavé-set with brilliant-cut diamonds and circular-cut pink gemstones, *diamonds approx. 0.50ct total, ring size K½*

£800 - 1,200 €900 - 1,300

118

A DIAMOND SINGLE-STONE RING

Set with an old brilliant-cut diamond in an angular four-claw setting, *diamond approx. 2.00cts, ring size O½*

£3,200 - 3,800 €3,600 - 4,300

119

A GEM-SET DRESS RING

Set with a step-cut aquamarine, the mount pavé-set with circular-cut sapphires and brilliant-cut diamonds, *diamonds approx. 0.65ct. total, ring size L*

£800 - 1,200 €900 - 1,300

120

A PAIR OF DIAMOND EARSTUDS

Each set with an old brilliant-cut diamond in a four-claw setting, *diamonds approx. 2.00cts total*

£3,500 - 4,500 €3,900 - 5,100

121

A DIAMOND ETERNITY RING

Set with a continuous row of princess-cut diamonds, *diamonds approx. 3.50cts total, ring size L*

£1,200 - 1,500 €1,300 - 1,700

122

A DIAMOND NECKLACE

The cable-link chain set to the front with a fringe of brilliant-cut diamonds, *diamonds approx. 0.85ct total, French import marks, length 44.2cm*

£1,200 - 1,500 €1,300 - 1,700

123

A DIAMOND FANCY-LINK BRACELET

Designed as a series of brilliant-cut diamond panels, *diamonds approx. 2.55cts total, length 18.3cm*

£1,500 - 2,000 €1,700 - 2,200

124

A DIAMOND LINE BRACELET

Set with a continuous row of brilliant-cut diamonds, *diamonds approx. 4.50cts total, length 18.4cm*

£3,500 - 4,500 €3,900 - 5,100



115



116



117



118



119



120



121



122



123



124



128

127

126

125



129

125

A DIAMOND SINGLE-STONE RING

The brilliant-cut diamond between shoulders set with baguette-cut diamonds, *principal diamond approx. 1.45cts, ring size L*

£1,800 - 2,200 €2,000 - 2,500

126

A SAPPHIRE AND DIAMOND PENDANT NECKLACE

The collet-set cushion-shaped sapphire, weighing 12.57 carats, within an openwork surround, suspended from a curved polished surmount on a snake-link chain, accented by similarly-shaped and old brilliant cut diamonds, mounted in 18 carat white and yellow gold, *diamonds approx. 0.40ct total, maker's mark, UK hallmarks, European convention mark, lengths: pendant 2.7cm, chain 40.4cm*

£4,000 - 6,000 €4,500 - 6,700

Accompanied by a report from GCS stating that the sapphire is natural, of Sri Lankan origin, with no indications of heat treatment. Report number 78135-43, dated 21st December 2017.

127

A CULTURED PEARL CHOKER WITH A GEM-SET CLASP

The four strands of 5.9mm-6.2mm cultured pearls with a bicoloured clasp of openwork quartrefoil design, set with circular-cut emeralds, sapphires and brilliant-cut diamonds, accented by a central similarly-cut ruby, *diamonds approx. 0.30ct total, length 34.1cm*

£1,200 - 1,500 €1,300 - 1,700

128

A SAPPHIRE AND DIAMOND RING

Set with a step-cut sapphire between tapered baguette-cut diamond shoulders, mounted in 18 carat white and yellow gold, *diamonds approx. 0.30ct total, London hallmark, ring size N*

£1,000 - 1,500 €1,100 - 1,700

129

A RUBY AND DIAMOND RING

The oval-cut ruby and brilliant-cut diamond cluster within an undulating baguette and tapered baguette-cut diamond surround, *diamonds approx. 1.50cts total, ring size P*

£2,000 - 3,000 €2,200 - 3,400

130

A DIAMOND BANGLE

Set to the front with a row of brilliant-cut diamonds, mounted in 18 carat yellow gold, *diamonds approx. 2.30cts total, UK import mark, inner diameter 5.8cm*

£800 - 1,200 €900 - 1,300



130



131

131

A RUBY, YELLOW SAPPHIRE AND DIAMOND RING

The graduated band set with arching rows of vari-cut rubies, yellow sapphires and brilliant-cut diamonds, *diamonds approx. 0.55ct total, ring size K*

£800 - 1,200

€900 - 1,300

132

A RUBY AND DIAMOND NECKLACE, EARRING AND RING SUITE

Designed as two rows of curb-link chains, set at intervals with oval cabochon ruby and brilliant-cut diamond clusters, to a curb-link backchain, the earrings and ring en suite, *diamonds approx. 3.10cts total, ring with Egyptian assay marks, lengths: necklace 49.0cm, earrings 1.7cm, ring size P½ (3)*

£3,000 - 4,000

€3,400 - 4,500

133

A PAIR OF SAPPHIRE AND DIAMOND PENDENT EARCLIPS, BY FRED, CIRCA 1980

Each cluster spray set with brilliant, baguette and tapered baguette-cut diamonds, suspending two articulated rows of brilliant-cut diamonds, terminating with pear-shaped sapphire drops, *diamonds approx. 4.75cts total, signed Fred, maker's marks, French assay marks, length 5.1cm*

£4,000 - 6,000

€4,500 - 6,700

Accompanied by a copy of a purchase receipt from Fred in Paris, dated 3rd February 1986.

132

134

A SAPPHIRE AND DIAMOND RING AND A PAIR OF DIAMOND EARCLIPS

1st: Of bicoloured design, the oval-cut sapphire set between two rows of brilliant-cut diamonds, 2nd: Each circular bombé plaque with a hemispherical panel of black enamel and a central row of brilliant-cut diamonds, *diamonds approx. 2.00cts total, ring size M, earring length 2.1cm (2)*

£1,500 - 2,000

€1,700 - 2,200

134





135

135
AN AQUAMARINE AND DIAMOND DOUBLE-CLIP BROOCH, CIRCA 1950

Designed as scrolling drapery set throughout with brilliant, old brilliant, single and baguette-cut diamonds, with a border and central panel of oval and circular-cut aquamarines, *diamonds approx. 9.65cts total, width 7.8cm*

£3,000 - 4,000 €3,400 - 4,500



136

136
A PAIR OF DIAMOND PENDENT EARRINGS

Each designed as a geometric openwork cartouche set with single, baguette-cut and demilune-shaped diamonds, suspended from a row of single-cut diamonds, surmounted by an old brilliant-cut diamond, *diamonds approx. 1.85cts total, length 3.2cm*

£1,000 - 1,500 €1,100 - 1,700



137

137
A RUBY AND DIAMOND RING

The graduated row of pear-shaped rubies, accented to one side with a row of baguette-cut diamonds, *diamonds approx. 0.80ct total, ring size I*

£1,800 - 2,200 €2,000 - 2,500

Accompanied by a report from GCS stating that the rubies are natural, of Burmese origin, one of Thai origin, with no indications of heat treatment. Report number 77116-16, dated 11th August 2017.





138



139



142

138

A PAIR OF CULTURED PEARL AND DIAMOND EARCLIPS

Each set with a 14.2mm or 14.7mm cultured pearl, one of grey tint, within a surround of brilliant and baguette-cut diamonds, *diamonds approx. 3.05cts total, length 3.0cm*

£1,200 - 1,500

€1,300 - 1,700

139

A PAIR OF DIAMOND EARCLIPS, CIRCA 1955

Each designed as a stylised plume, set throughout with baguette, brilliant and single-cut diamonds, *diamonds approx. 4.45cts total, length 3.2cm*

£1,500 - 2,000

€1,700 - 2,200

140

A DIAMOND CLUSTER RING

Of bombé form, the old brilliant-cut diamond accented by scrolling rows of baguette, step, single and brilliant-cut diamonds, *principal diamond approx. 2.00cts, remaining diamonds approx. 2.85cts total, ring size M*

£3,000 - 4,000

€3,400 - 4,500

141

A CULTURED PEARL AND DIAMOND NECKLACE/ A CULTURED PEARL AND DIAMOND CHOKER AND BRACELET, CIRCA 1950

Formed as multi-strand graduated 6.0mm-8.2mm cultured pearl necklace accented to either side with two brilliant and baguette-cut diamond plaques, converting to a three-strand cultured pearl choker with a diamond clasp and a two-strand cultured pearl bracelet en suite, *diamonds approx. 3.30cts total, lengths: necklace shortest strand 56.6cm, choker shortest strand 35.3cm, bracelet 20.5cm*

£1,500 - 2,000

€1,700 - 2,200

142

A RUBY AND DIAMOND BRACELET

Of undulating crossover design, set with a row of circular-cut rubies and a row of brilliant-cut diamonds, *diamonds approx. 2.20cts total, length 17.6cm*

£1,500 - 2,000

€1,700 - 2,200



140



141





143
A BELLE ÉPOQUE DIAMOND CHOKER, FRENCH, CIRCA 1905
 The front designed as an old brilliant, single and rose-cut diamond flowerhead suspending a similarly-set openwork bow and basket of flowers, between black velvet ribbons accented with rose-cut diamond foliate detailing, with a scalloped similarly-cut diamond border, mounted in platinum and 18 carat yellow gold, *diamonds approx. 0.45ct total, maker's mark G.S, numbered, French assay mark, length 31.7cm*

£2,000 - 3,000 €2,200 - 3,400

144
A DIAMOND LILY OF THE VALLEY BROOCH, CIRCA 1900
 Set throughout with old brilliant and rose-cut diamonds, later rhodium plating, *old brilliant-cut diamonds approx. 4.30cts, length 7.6cm*

£1,000 - 1,500 €1,100 - 1,700

145
AN EMERALD AND DIAMOND BROOCH
 The step-cut emerald within an openwork foliate surround set with old brilliant, rose-cut and cushion-shaped diamonds, *old brilliant and cushion-shaped diamonds approx. 1.80cts, length 2.8cm*

£2,000 - 3,000 €2,200 - 3,400

146
A PAIR OF DIAMOND EARSTUDS
 Each set with a cushion-shaped diamond, weighing 1.79 carats or 1.92 carats, *butterflies deficient*

£4,000 - 6,000 €4,500 - 6,700

147
AN AGATE AND GEM-SET CAMEO BROOCH/PENDANT, CIRCA 1870
 The navette-shaped banded agate cameo carved to depict Diana the Huntress, within tiered surrounds of rose-cut diamonds and cushion-shaped rubies, surmounted by a pierced ribbon cresting with a garland surround of rose-cut diamonds and 3.0mm-4.1mm pearls, the suspension loop similarly-set with cushion-shaped diamond accents, the reverse revealing a glazed oval compartment, mounted in silver and gold, *pearls untested, length 6.5cm*

£1,500 - 2,000 €1,700 - 2,200



149

148^Y

A COLLECTION OF GREEN HARDSTONE, CORAL AND DIAMOND-SET JEWELLERY

Comprising: A carved green hardstone and seed pearl pendant necklace, a pair of green hardstone bead earrings, a pair of coral *corallium rubrum*, rose-cut diamond and black enamel pendent earrings, a pair of blonde tortoiseshell hair combs set with old brilliant-cut diamonds, and an early 20th century hairclip of openwork design, set throughout with rose-cut diamonds, mounted in silver and gold, *old brilliant-cut diamonds approx. 1.35cts total, all earring fittings deficient, lengths: pendant 6.6cm, chain 43.0cm, hardstone earrings 5.1cm, coral earrings 4.7cm, hair combs 5.3cm, hair clip 7.5cm (partially illustrated) (5)*

£1,000 - 1,500 €1,100 - 1,700

This lot will be subject to USA Fish and Wildlife regulations if it is to be imported into the USA.

149

A DIAMOND SERPENT BROOCH, CIRCA 1890

The coiled serpent set throughout with cushion-shaped diamonds, the head terminating with rose-cut diamonds, mounted in silver and gold, *cushion-shaped diamonds approx. 1.60cts total, maker's mark, Austro-Hungarian assay marks, length 4.0cm*

£1,000 - 1,500 €1,100 - 1,700

150

A NATURAL PEARL AND RUBY AIGRETTE

The radiating rows of 3.1mm-5.9mm natural pearls to a filigree centre set with a cushion-shaped ruby, on a penannular pin fitting, *French assay marks, length 7.3cm*

£1,200 - 1,500 €1,300 - 1,700

Accompanied by a report from GCS stating that the pearls are natural, saltwater with no indications of treatment. The ruby presents no indications of heating and gemmological characteristics consistent with rubies originating from Burma. Report number 78121-56, dated 29th September 2017.



148



150



148



151

A DIAMOND BROOCH

The openwork plaque set throughout with old brilliant-cut and cushion-shaped diamonds, *diamonds approx. 2.70cts total, width 4.1cm*

£800 - 1,200 €900 - 1,300

This lot is to be sold without reserve.

152

A BERYL AND DIAMOND CLUSTER RING, RUSSIAN

The cushion-shaped beryl of pale green tint, within a surround of similarly-shaped and old brilliant-cut diamonds, *diamonds approx. 1.40cts total, Russian assay marks for Odessa, ring size L*

£2,000 - 2,500 €2,200 - 2,800



152



151

153

A DIAMOND BANGLE

Of openwork design, set to the front with brilliant-cut diamonds between two rows of smaller similarly-cut diamonds, mounted in 18 carat white gold, *diamonds approx. 2.20cts total, London hallmark, inner diameter 5.8cm*

£1,000 - 1,500 €1,100 - 1,700

154

A DIAMOND BRACELET

The articulated strap set throughout with brilliant-cut diamonds, *diamonds approx. 6.15cts total, length 17.6cm*

£2,000 - 3,000 €2,200 - 3,400

155

A PAIR OF DIAMOND EARRINGS, BY TIFFANY, AND A DIAMOND BRACELET

1st: Each of annular design, set throughout with brilliant-cut diamonds, 2nd: Designed as an openwork stylised flowerhead between two openwork pear-shaped links, set throughout with brilliant-cut diamonds, on a polished brick-link bracelet, *diamonds approx. 2.30cts total, earrings signed T&CO., lengths: 1st 1.0cm, 2nd 18.2cm (2)*

£1,200 - 1,500 €1,300 - 1,700

156

A TANZANITE AND DIAMOND CLUSTER RING

The oval-cut tanzanite within a surround of brilliant-cut diamonds, the shoulders set with baguette-cut diamonds, *diamonds approx. 2.35cts total, ring size M*

£1,200 - 1,500 €1,300 - 1,700

157

A PAIR OF DIAMOND EARRINGS, BY VAN CLEEF & ARPELS

Each designed as a brilliant-cut diamond scroll, suspending a similarly-cut diamond drop, *diamonds approx. 0.70ct total, signed VCA, numbered, maker's marks, French assay marks, one alpha back deficient, length 0.9cm*

£1,200 - 1,500 €1,300 - 1,700





158

AN AQUAMARINE AND DIAMOND RING

The step-cut aquamarine, between shoulders with scrollwork decoration set with brilliant and single-cut diamonds, *diamonds approx. 0.30ct total, ring size M½*

£1,500 - 2,000 €1,700 - 2,200

159

A DIAMOND RING AND A PAIR OF DIAMOND PENDANT EARRINGS

1st: Designed as a trio of sliding flowerheads set throughout with brilliant-cut diamonds, between two rows of similarly-cut diamonds, 2nd: Each stylised lotus flower set throughout with brilliant-cut diamonds, to a similarly-set surmount, *diamonds approx. 1.20cts total, earrings with French assay mark, ring size J½, earring length 2.8cm (2)*

£1,200 - 1,500 €1,300 - 1,700

160

A DIAMOND LINE BRACELET

Set with a uniform series brilliant-cut diamonds, *diamonds approx. 5.40cts total, length 17.3cm*

£2,000 - 3,000 €2,200 - 3,400

161

A DIAMOND PENDANT NECKLACE

The pear-shaped diamond within a surround of brilliant-cut diamonds, suspended from an articulated surmount of marquise-cut diamonds, on an 18 carat white gold cable-link chain, *principal diamond approx. 1.00ct, remaining diamonds approx. 1.50ct total, chain with UK hallmark, lengths: pendant 2.3cm, chain 46.1cm*

£1,000 - 1,500 €1,100 - 1,700

162

A DIAMOND CLUSTER RING

The old brilliant-cut diamond with a tiered openwork surround of brilliant and baguette-cut diamonds, *principal diamond approx. 2.25cts, remaining diamonds approx. 4.65cts total, ring size M*

£5,000 - 7,000 €5,600 - 7,900

163

A DIAMOND SINGLE-STONE RING

The brilliant-cut diamond mounted in platinum, *diamond approx. 1.10cts total, partial UK hallmark, European convention mark, ring size U*

£2,000 - 3,000 €2,200 - 3,400

164

A DIAMOND ETERNITY RING

Set throughout with baguette-cut diamonds, *diamonds approx. 1.50cts total, ring size O*

£800 - 1,200 €900 - 1,300



162

165

A DIAMOND NECKLACE, CIRCA 1900

Composed of three foliate links, suspending a knifewire fringe to the front, set throughout with rose-cut diamonds in closed back settings, mounted in silver and gold, on a later cable-link backchain, *length 37.2cm (40.0cm with additional link)*

£1,000 - 1,500 €1,100 - 1,700

166

A DIAMOND REGIMENTAL BROOCH

The County London Yeomanry brooch set throughout with single and old brilliant-cut diamonds, *diamonds approx. 0.80ct total, length 3.3cm, cased by SJ Phillips Ltd., 139 New Bond St., London*

£1,000 - 1,500 €1,100 - 1,700

167

AN EARLY 20TH CENTURY GEM-SET ORDER OF SAINT PATRICK BROOCH

The radiating star set throughout with single-cut diamonds, the central calibre-cut emerald clover and similarly-cut ruby cross within a circular border of turquoise enamel, inscribed with the motto, *quis separabit MDCCLXXXIII*, "who will separate (us) 1783", mounted in silver and gold, *diamonds approx. 0.50ct total, length 3.7cm*

£800 - 1,200 €900 - 1,300

The Most Illustrious Order of Saint Patrick was created in 1783 by George III to reward Irish peers on whose support the British government depended. The regular creation of knights of Saint Patrick lasted until 1921, when most of Ireland became independent. While the Order technically still exists, it became dormant in 1974 with the death of the last surviving recipient, Prince Henry, Duke of Gloucester. His niece, Elizabeth II remains the Sovereign of the Order.

168

A SAPPHIRE AND DIAMOND BROOCH

The cushion-shaped sapphire within a foliate and scrollwork surround of rose-cut diamonds, suspended from a surmount of similar design, *length 5.4cm*

£5,000 - 7,000 €5,600 - 7,900

Accompanied by a report from GCS stating that both sapphires, weighing approximately 4.60 carats and 5.80 carats, are natural, of Sri Lankan origin, with no indications of heat treatment. Report number 77120-61, dated 19th September 2017.

169

A PAIR OF RUBY AND DIAMOND PENDENT EARRINGS

Each designed as a circular-cut ruby within a surround of old brilliant-cut diamonds, suspended from a similarly-cut diamond surmount, *diamonds approx. 0.60ct total, length 1.9cm*

£800 - 1,200 €900 - 1,300

170

A DIAMOND FLOWER BROOCH/PENDANT, CIRCA 1890

Designed as an openwork flowerhead with knifewire accents, set throughout with old brilliant and single-cut diamonds, mounted in silver and gold, *diamonds approx. 6.75cts total, length 3.8cm*

£1,800 - 2,200 €2,000 - 2,500

171

A DEMANTOID GARNET, DIAMOND AND SEED PEARL BRACELET

Each circular-cut demantoid garnet and single-cut diamond flowerhead issuing scrolling similarly-cut diamond links, accented by trios of seed pearls, *diamonds approx. 2.50cts total, pearls untested, Austrian assay marks, length 18.2cm*

£3,500 - 4,000 €3,900 - 4,500

172

A PAIR OF PEARL AND DIAMOND CLUSTER EARRINGS

Each 6.5mm or 6.7mm pearl within a cushion-shaped diamond surround, *diamonds approx. 1.50cts total, pearls untested, length 1.7cm*

£800 - 1,200 €900 - 1,300

173

A DIAMOND AND RUBY BROOCH, CIRCA 1890

Designed as an openwork heart with three central swords, surmounted by a coronet, set throughout with vari-cut rubies, old brilliant, rose-cut and cushion-shaped diamonds, *old brilliant-cut and cushion-shaped diamonds approx. 3.80cts, later rhodium plating, length 5.1cm*

£1,000 - 1,500 €1,100 - 1,700

174

A GEM-SET BROOCH

Formed as a graduated row of circular-cut and cushion-shaped gemstones, including sapphires and garnets, *width 6.7cm*

£1,200 - 1,500 €1,300 - 1,700



166



167



165



170



169



168



171



172



173



174



176

175

175

A TRIO OF 'BAMBOO' RINGS, BY TIFFANY

Each designed as bamboo cane, *all signed T&Co.*, ring sizes: N, N, N½, *maker's pouch* (3)

£800 - 1,200

€900 - 1,300

176

A NECKLACE AND EARCLIP SUITE, BY ZOLOTAS

Formed as a continuous series of hammered scrolling links, the earclips en suite, *signed Zolotas*, lengths: necklace 46.5cm, earclips 2.2cm, necklace with *maker's case* (2)

£2,500 - 3,000

€2,800 - 3,400

177

A PAIR OF RUBY EARCLIPS AND A RUBY RING, BY LALAOUNIS

1st: Each designed as a coiled dragon, holding a circular ruby cabochon in its mouth, 2nd: The circular cabochon ruby in a raised coronet setting, between two serpent heads with circular-cut ruby eyes, bead and ropetwist detail throughout, *earclips with maker's marks, ring with rubbed maker's mark, earclip length 2.6cm, ring size L, maker's cases (2)*

£1,000 - 1,500 €1,100 - 1,700

178

A BANGLE, BY LALAOUNIS

Set with a central oval ruby cabochon and brilliant-cut diamond cluster, between two lion heads with circular-cut ruby eyes and two oval ruby cabochons at the base of their necks, bead and ropetwist detail throughout, *maker's mark, inner diameter 5.9cm, maker's case*

£1,000 - 1,500 €1,100 - 1,700

179

A PAIR OF PENDENT EARRINGS, BY LALAOUNIS

Each bombé surmount suspending a detachable conical, bead and fluted sphere drop, of hammered finish, *signed Ilias Lalaounis, maker's marks, 6.7cm*

£1,500 - 2,000 €1,700 - 2,200



177



179

180

AN AMBER BEAD NECKLACE

Composed of a single-strand of 17.4mm-24.0mm amber beads, length 43.5cm

£1,200 - 1,500 €1,300 - 1,700

Accompanied by a report from GCS stating that the amber is natural, of Baltic origin, with no indications of heat treatment. Report number 78140-08, dated 30th January 2018.

181

A SAPPHIRE AND DIAMOND THREE-STONE RING

Rubover-set with a cushion-shaped sapphire between two old brilliant-cut diamonds, *diamonds approx. 1.25cts total, ring size Q*

£1,000 - 1,500 €1,100 - 1,700

182

A LAPIS LAZULI AND DIAMOND RING

Designed as overlapping plaques of lapis lazuli and hemispheres set with brilliant-cut diamonds, *diamonds approx. 0.75ct total, Portuguese assay mark, ring size J*

£1,200 - 1,500 €1,300 - 1,700

183

A PAIR OF LAPIS LAZULI AND DIAMOND EARRINGS

Each designed as overlapping plaques of lapis lazuli and hemispheres set with brilliant-cut diamonds, *diamonds approx. 2.45cts total, Portuguese assay marks, length 3.4cm*

£1,800 - 2,200 €2,000 - 2,500

184

A SAPPHIRE AND DIAMOND RING

The oval-cut sapphire, weighing 3.31 carats, between two tapered baguette-cut diamonds, in a bicoloured setting, *diamonds approx. 1.50cts total, ring size O*

£2,000 - 3,000 €2,200 - 3,400

Accompanied by a report from The Gem & Pearl Laboratory stating that the sapphire is natural, of Sri Lankan origin, with no indications of heat treatment. Report number 12910, dated 28th June 2016.

185

A SAPPHIRE AND DIAMOND CLUSTER RING

The cushion-shaped sapphire, weighing 6.39 carats, within a surround of brilliant-cut diamonds, *diamonds approx. 2.40cts total, ring size O½*

£5,000 - 7,000 €5,600 - 7,900

Accompanied by a report from GCS stating that the sapphire is natural, of Sri Lankan origin, with no indications of heat treatment. Report number 78141-04, dated 30th January 2018.

186

A PAIR OF SAPPHIRE AND DIAMOND EARRINGS, BY ASPREY

Each designed as a graduation of oval-cut sapphires between rows of brilliant-cut diamonds, mounted in 18 carat yellow gold, *diamonds approx. 3.80cts total, signed Asprey, maker's marks, French assay marks, UK import marks, length 2.2cm*

£2,500 - 3,000 €2,800 - 3,400

187

A SAPPHIRE BRACELET, BY BOIVIN

The uniform row of articulated oval-shaped links, set throughout with circular-cut sapphires, *signed René Boivin, rubbed maker's mark and French assay mark, length 16.1cm*

£3,000 - 4,000 €3,400 - 4,500

188

A CULTURED PEARL, SAPPHIRE AND DIAMOND BROOCH

Designed as a butterfly, the abdomen set with a 15.7mm x 19.3mm baroque cultured pearl, the wings pavé-set with brilliant-cut diamonds, each accented a pear-shaped or oval-cut sapphire, the head accented with a circular cabochon sapphire, *diamonds approx. 1.05cts total, length 3.0cm*

£1,800 - 2,500 €2,000 - 2,800



181

180



182



185



186



183



184



187



188

189

A DIAMOND JARRETIÈRE BRACELET, CIRCA 1945

Designed as a geometric textured strap with a scrolling clasp set with old brilliant and single-cut diamonds, *diamonds approx. 0.55ct total, length 24.4cm (adjustable)*

£1,500 - 2,000 €1,700 - 2,200

190

A PAIR OF NATURAL PEARL AND DIAMOND CLUSTER EARRINGS

Each 9.4mm-9.7mm x 5.4mm or 9.5mm-9.6mm x 5.5mm natural pearl within a surround of rose-cut diamonds, *length 1.3cm*

£3,000 - 4,000 €3,400 - 4,500

Accompanied by a report from GCS stating that the pearls are natural saltwater, with no indications of treatment. Report number 78133-76, dated 6th December 2017.

191

A DIAMOND SINGLE-STONE RING

The brilliant-cut diamond, weighing 3.40 carats, in a raised six-claw setting, *ring size J*

£4,500 - 5,500 €5,100 - 6,200

192

A PAIR OF SAPPHIRE AND DIAMOND EARCLIPS

Each cushion-shaped sapphire accented to one side with openwork loops set with brilliant, old brilliant and and single-cut diamonds, *diamonds approx. 1.20cts total, length 2.5cm*

£3,500 - 4,500 €3,900 - 5,100

Accompanied by a report from GCS stating that both sapphires, weighing 2.49 carats and 1.52 carats (as stated by the vendor), are natural, of Sri Lankan origin, with no indications of heat treatment. Report number 77101-72, dated 11th May 2017.

193

A DIAMOND BROOCH, BY CHAUMET, CIRCA 1950

Formed as a wirework trefoil set with a central old brilliant-cut diamond, the wires accented with similarly-cut and cushion-shaped diamonds, *principal diamond approx. 0.85ct, remaining diamonds approx. 1.40cts total, signed Chaumet, maker's mark, French assay marks, length 4.3cm*

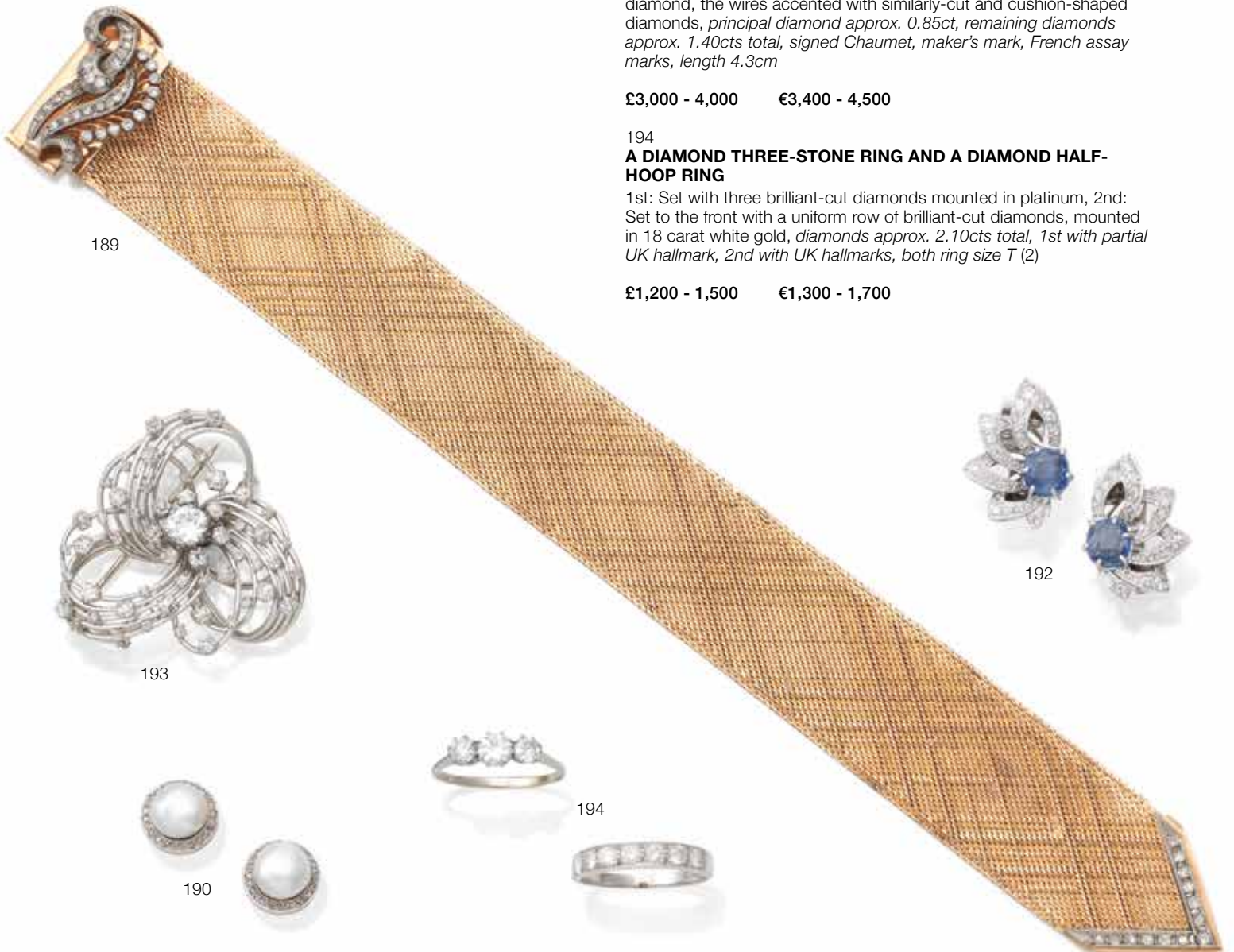
£3,000 - 4,000 €3,400 - 4,500

194

A DIAMOND THREE-STONE RING AND A DIAMOND HALF-HOOP RING

1st: Set with three brilliant-cut diamonds mounted in platinum, 2nd: Set to the front with a uniform row of brilliant-cut diamonds, mounted in 18 carat white gold, *diamonds approx. 2.10cts total, 1st with partial UK hallmark, 2nd with UK hallmarks, both ring size T (2)*

£1,200 - 1,500 €1,300 - 1,700





195

A PAIR OF DIAMOND CLUSTER EARSTUDS

Each set with brilliant-cut diamonds, *diamonds approx. 2.00cts total, length 1.0cm*

£1,000 - 1,500 €1,100 - 1,700

196

A PEARL AND DIAMOND CHOKER, BROOCH AND BRACELET SUITE

The multi-strand 3.7mm-3.9mm cultured pearl choker, with two spacers of openwork geometric design, set throughout with single and old brilliant-cut diamonds, the bracelet and brooch en suite, *diamonds approx. 11.45cts total, lengths: choker 31.8cm, bracelet 18.0cm brooch 3.8cm (3)*

£3,000 - 4,000 €3,400 - 4,500

195

196

197

191

197

A DIAMOND THREE-STONE RING

Set with three old brilliant-cut diamonds, *diamonds approx. 1.65cts total, ring size K*

£1,000 - 1,500 €1,100 - 1,700

198

A DIAMOND AND PEARL CHOKER ON A BLACK SASH

Designed as a multi-strand 3.2mm-4.0mm cultured pearl braid, with an openwork scrollwork plaque set throughout with brilliant, single and baguette-cut diamonds, the whole mounted on a black sash, *diamonds approx. 5.95cts total, length 34.4cm (illustrated on inside back cover)*

£1,500 - 2,000 €1,700 - 2,200



199

199

A 'PARENTESI' NECKLACE, BRACELET AND EARRING SUITE, BY BULGARI, 1988

The necklace composed of interlocking geometric links, mounted in 18 carat yellow gold, the sprung bangle and earrings en suite, *signed Bulgari, maker's marks, London import marks, lengths: necklace 39.5cm, earrings 2.7cm, bangle inner diameter 5.7cm (3)*

£10,000 - 15,000 €11,000 - 17,000

200

AN 'ALHAMBRA' NECKLACE, BY VAN CLEEF & ARPELS

Designed as a series of textured quatrefoil plaques connected by faceted cable-link chain, *signed VCA, numbered, maker's mark, French assay mark, length 42.2cm*

£2,500 - 3,500 €2,800 - 3,900

200





201

201^Y

A MOTHER-OF-PEARL 'MAGIC ALHAMBRA' NECKLACE, BY VAN CLEEF & ARPELS

Composed of 11 mother-of-pearl quatrefoils of various sizes, connected by faceted cable-link chain, suspending a larger mother-of-pearl quatrefoil pendant, mounted in 18 carat yellow gold, *signed VCA, numbered, rubbed maker's mark, Swiss assay mark, European convention mark, length 83.3cm*

£8,000 - 12,000 €9,000 - 13,000

Please note this lot will be subject to USA Fish and Wildlife regulations if imported into the USA.

202

A 'CHANDRA' BRACELET, BY BULGARI

The uniform series of white porcelain beads with lotus leaf motifs, *signed Bulgari, length 21.2cm*

£1,500 - 2,000 €1,700 - 2,200



202



203

A GARNET AND PEARL BROOCH, CIRCA 1840

Engraved throughout with a scrolling floral and acanthus leaf design, with ropetwist decoration and a central cluster of oval cabochon almandine garnets and a 3.9mm pearl, all in closed-back settings, the reverse with a circular glazed compartment, suspending a detachable pendant of similar design, *pearls untested, length 7.9cm, cased*

£1,000 - 1,500 €1,100 - 1,700

204

A RUBY AND DIAMOND RING

The single and rose-cut diamond bow, atop a pear-shaped ruby and diamond 'heart', between shoulders set with graduations of old brilliant-cut diamonds, *pear-shaped, old brilliant and single-cut diamonds approx. 0.75cts, ring size M*

£2,000 - 2,500 €2,200 - 2,800

205

A MICROMOSAIC BANGLE, BY A. TANFANI, CIRCA 1850-1870

The polychrome tesserae panel to the front depicting three doves perched on floral sprigs, the reverse of with ropetwist and beadwork decoration and applied letters spelling ROMA, *inner diameter 5.7cm, fitted case by A. Tanfani, 466 Corso-Via Della Vite 9, Via Condotti 2, Roma*

£800 - 1,200 €900 - 1,300

206

A DIAMOND SERPENT RING, 1870

Designed as a gold coiled serpent, the head accented with a cushion-shaped diamond, *diamond approx. 1.00ct total, maker's mark, London hallmark, ring size U*

£1,000 - 1,500 €1,100 - 1,700

207

AN EARLY 20TH CENTURY BANDED ONYX DRESS SET

Double-sided: Each banded onyx cabochon connected by a figure-of-eight link, accompanied by three buttons and one stud en suite, the terminals of the buttons with scroll and foliate engraved detail, mounted in gold, *plaque length 1.8cm, button diameter 1.0cm, stud diameter 0.8cm, fitted case (5)*

£800 - 1,200 €900 - 1,300

208

A DIAMOND AND ENAMEL MEMORIAL RING, 1854

The cushion-shaped diamond within a scrolling surround with foliate shoulders, decorated in black enamel, with a rubbed inscription to the inside band bearing the date, *died 5 June 1855*, mounted in gold, *diamond approx. 0.65ct, London hallmark, ring size K*

£800 - 1,200 €900 - 1,300

209

A RUBY AND DIAMOND FIVE-STONE RING

Set with an alternating row of cushion-shaped rubies and old brilliant-cut diamonds, with rose-cut diamond accents, *old brilliant-cut diamonds approx. 1.65cts, ring size L*

£1,500 - 2,000 €1,700 - 2,200



204



203



206



208



205



207



209

210

A GOLD AND DIAMOND LOCKET, CIRCA 1880

The front decorated with star motifs inset with old brilliant and rose-cut diamonds, opening to reveal a glazed compartment, suspended from a fluted pendant loop, *diamonds approx. 1.40cts total, length 5.3cm*

£1,500 - 2,000

€1,700 - 2,200

211

A 19TH CENTURY TOPAZ, CHRYSOBERYL AND TURQUOISE BROOCH/PENDANT

The central oval-cut pink topaz between cushion-shaped and circular-cut green chrysoberyl, accented by oval and circular turquoise cabochons, mounted in gold with bead detailing and a ropetwist suspension loop, *later brooch pin fitting, width 4.1cm*

£800 - 1,200

€900 - 1,300

212

A MICROMOSAIC BRACELET, CIRCA 1840

The oval micro-mosaic depicting a classical landscape with temples and a river, to a surround of bead and wirework decoration, the articulated bracelet of foliate and bud design, mounted in gold, *length 18.1cm, fitted case by Cameo Corner*

£1,200 - 1,500

€1,300 - 1,700

213

A DIAMOND THREE-STONE RING

The old brilliant-cut diamond between two cushion-shaped diamonds, with rose-cut diamond accents, the gallery with scrollwork detail, *principal diamond approx. 1.45cts, remaining cushion-shaped diamonds approx. 0.95ct total, ring size L*

£2,500 - 3,000

€2,800 - 3,400

214

AN ARCHAEOLOGICAL REVIVAL BANGLE, CIRCA 1860

The frontispiece depicting fruiting vines within a scrollwork surround of ropetwist and bead detailing, between shoulders of similar detail, mounted in gold, *inner diameter 6.0cm*

£2,500 - 3,000

€2,800 - 3,400



215

AN OPAL AND DIAMOND PENDANT

The oval cabochon opal within a surround of brilliant-cut diamonds, on an 18 carat yellow gold spiga-link chain, *diamonds approx. 5.10cts total, chain with partial UK hallmark and European convention mark, lengths: pendant 4.2cm, chain 50.9cm*

£2,500 - 3,500 €2,800 - 3,900

216

A GEM-SET NECKLACE, BRACELET AND EARRING SUITE

Designed as a series of bicoloured fancy-links, set to the front with fluted cabochon gemstones including, amethysts, citrines and pink tourmalines, the bracelet and earrings en suite, *all with UK import marks, earrings with maker's marks and French assay marks, lengths: necklace 40.3cm, bracelet 17.9cm, earrings 1.7cm (3)*

£2,000 - 3,000 €2,200 - 3,400

217

A YELLOW SAPPHIRE RING

Set with an oval-cut yellow sapphire, weighing 21.57 carats, *ring size N*

£8,000 - 10,000 €9,000 - 11,000

Accompanied by a report from GCS stating that the yellow sapphire is natural, of Sri Lankan origin, with no evidence of heating. Report number 78138-20, dated 22nd January 2018.

218

A RUBY AND DIAMOND CLUSTER RING

The oval-cut ruby within a surround of brilliant-cut diamonds, *diamonds approx. 0.70ct total, ring size O*

£800 - 1,000 €900 - 1,100

219

A ROSE QUARTZ AND GEM-SET DRESS RING

Of bombé design, set with an oval rose quartz cabochon, the gallery and shoulders gem-set to include circular-cut pink sapphires and oval-cut amethysts, *ring size M*

£1,200 - 1,500 €1,300 - 1,700

220^Y

A PAIR OF ONYX, CORAL AND DIAMOND CUFFLINKS, BY CARTIER

Each circular plaque set with a coral *corallium rubrum* baton between calibré-cut onyx, within a surround of brilliant-cut diamonds, with an onyx and coral *corallium rubrum* terminal, connected by cable-link chain, *diamonds approx. 0.95ct total, signed Cartier, plaque length 1.5cm, maker's case*

£2,000 - 3,000 €2,200 - 3,400

This lot is subject to USA Fish and Wildlife regulations if it is to be imported into the USA.

221

AN AMBER BEAD NECKLACE

Composed of 23.1mm-30.3mm amber beads, between smaller duos of 12.1mm-15.8mm amber beads, *length 76.0cm* (illustrated on inside front cover)

£1,500 - 2,000 €1,700 - 2,200

Accompanied by a report from GCS stating that the amber is natural, of Baltic origin, with no indications of heat treatment in the large opaque beads and indications of heat treatment in the small beads. Report number 78137-18, dated 30th January 2018.

222

A RUBY AND DIAMOND RING, BY VALLÉE

Set with a circular-cut ruby, within a twisting surround pavé-set with brilliant-cut diamonds, between bifurcated shoulders, *diamonds approx. 0.40ct total, maker's mark, French assay mark, ring size K*

£1,000 - 1,500 €1,100 - 1,700



216



215



218



217



216



222



220



219

223

A DIAMOND TWO-STONE RING

Obliquely-set with two brilliant-cut diamonds, *diamonds approx. 2.15cts total, ring size N*

£2,000 - 3,000 €2,200 - 3,400

224

A TOURMALINE AND DIAMOND DRESS RING

Set with an oval-cut pink tourmaline within an openwork bombé surround of brilliant, old brilliant and single-cut diamonds, *diamonds approx. 2.45cts total, ring size N*

£1,000 - 1,500 €1,100 - 1,700

225

A DIAMOND LINE BRACELET

The articulated row of brilliant-cut diamonds, mounted in 18 carat white gold, *diamonds approx. 10.20cts total, London hallmark, length 18.5cm*

£4,000 - 6,000 €4,500 - 6,700

226

A SAPPHIRE AND DIAMOND CLUSTER RING

The fancy-cut sapphire within a foliate surround of brilliant-cut diamonds, between single-cut diamond shoulders, *diamonds approx. 0.70ct total, ring size F (sizing beads)*

£3,000 - 4,000 €3,400 - 4,500

227

AN EMERALD AND DIAMOND CLUSTER RING AND ADJOINING DIAMOND RINGS

The step-cut emerald within a brilliant-cut diamond surround, together with a pair of brilliant-cut diamond rings designed to be worn either side, *diamonds approx. 3.65cts total, ring sizes K½, K½, K*

£1,500 - 2,000 €1,700 - 2,200





230



231



229



232



228

228

A DIAMOND RING

The oval-cut diamond between two brilliant-cut diamonds, mounted in platinum, *principal diamonds approx. 0.80ct, London hallmark, ring size J*

£800 - 1,200

€900 - 1,300

229

A SAPPHIRE AND DIAMOND CLUSTER RING

The circular-cut sapphire within a cluster surround of brilliant-cut diamonds, all collet-set with bead detailing, mounted in 18 carat white gold, *diamonds approx. 0.40ct total, UK hallmark, ring size N*

£800 - 1,200

€900 - 1,300

230

A DIAMOND SINGLE-STONE RING

The brilliant-cut diamond in a partial collet-setting, mounted in 18 carat white gold, *diamond approx. 1.60cts, London hallmark, ring size P*

£1,500 - 2,000

€1,700 - 2,200

231

A DIAMOND FIVE-STONE RING

Set with a graduated row of brilliant-cut diamonds, mounted in 18 carat white gold, *diamonds approx. 1.65cts total, London hallmark, ring size M½*

£1,500 - 2,000

€1,700 - 2,200

232

AN AQUAMARINE AND DIAMOND THREE-STONE RING AND A PINK SAPPHIRE AND DIAMOND THREE-STONE RING

1st: The step-cut aquamarine between two brilliant-cut diamonds, the shoulders similarly-set, 2nd: The oval-cut pink sapphire between two brilliant-cut diamonds, both mounted in 18 carat white gold, *diamonds approx. 0.95ct total, London hallmarks, ring sizes: 1st L, 2nd I (2)*

£1,000 - 1,500

€1,100 - 1,700



233

A PAIR OF DIAMOND-SET EARRINGS, BY GRIMA

Each conical formation of tiered and textured batons, accented by a trio of brilliant-cut diamonds, *signed Grima, length 2.0cm*

£1,500 - 2,000 €1,700 - 2,200

235

AN AQUAMARINE AND DIAMOND RING, CIRCA 1970

The step-cut aquamarine within an openwork abstract mount, accented by single-cut diamonds, *ring size M*

£2,000 - 3,000 €2,200 - 3,400

234

A TEXTURED COLLAR AND DIAMOND-SET BROOCH/ PENDANT, BY GRIMA, 1975 AND 1976

The textured collar suspending an openwork brooch/pendant, composed of vertical textured lines, accented by a row of brilliant-cut diamonds, mounted in 18 carat yellow gold, *signed Grima, maker's marks AG Ltd, London hallmarks, collar inner diameter 11.3cm, brooch/pendant length 7.0cm, maker's pouch*

£2,500 - 3,000 €2,800 - 3,400

236^Y

A CORAL AND DIAMOND BROOCH/PENDANT, BY KUTCHINSKY, 1970

Of triangular openwork form, set with three fluted coral *corallium rubrum* panels, accented by radiating clusters of brilliant and marquise-cut diamonds, with trios of navette-shaped coral *corallium rubrum* cabochons, mounted in 18 carat yellow gold, *diamonds approx. 3.95cts total, signed Kutchinsky, maker's mark KLD, London hallmark, length 5.7cm, maker's case*

£4,000 - 6,000 €4,500 - 6,700

This lot will be subject to USA Fish and Wildlife regulations if it is to be imported into the USA.

237^Y

A PAIR OF CORAL CUFFLINKS, BY CARTIER, CIRCA 1970

Each rectangular coral *corallium rubrum* cabochon plaque beneath a ropetwist frame, on a ropetwist baton terminal, *signed Cartier, numbered, plaque length 1.7cm*

£1,500 - 2,000 €1,700 - 2,200

This lot will be subject to USA Fish and Wildlife regulations if it is to be imported into the USA.

238

A PAIR OF ENAMEL CUFFLINKS, BY CARTIER, CIRCA 1970

Each bombé plaque with blue enamel volutes and bead detail, on a textured T-bar terminal, *signed Cartier, numbered, plaque length 2.2cm, maker's case*

£2,000 - 3,000 €2,200 - 3,400

239

A GOLD BRACELET, BY CARTIER, 1963

Designed as an 18 carat yellow gold fancy curb-link bracelet, *signed Cartier, numbered, maker's mark JC, numbered, UK hallmarks, length 20.5cm, maker's box*

£5,000 - 7,000 €5,600 - 7,900



236



237



238



239



240

240^Y

A 'DIVAS' DREAM' WRISTWATCH, BY BULGARI

The circular mother-of-pearl dial with a brilliant-cut diamond bezel, within an articulated surround of fan-shaped mother-of-pearl panels, accented by brilliant-cut diamonds and circular-cut pink tourmalines, the polished lugs set with a row of brilliant-cut diamonds, on a grey-strap with a similarly-cut diamond deployant clasp, mounted in 18 carat rose gold, *diamonds approx. 2.55cts total, dial, case and strap signed Bulgari, case and strap numbered, Swiss assay mark, European convention mark, inner diameter 4.8cm-5.7cm (adjustable), maker's case and box*

£10,000 - 15,000 €11,000 - 17,000

Please note this lot will be subject to USA Fish and Wildlife regulations if imported into the USA.

241

A DIAMOND SINGLE-STONE RING

Set with a brilliant-cut diamond weighing 6.77 carats in a raised eight-claw setting, *ring size L*

£12,000 - 15,000 €13,000 - 17,000



242

242

A CULTURED PEARL AND DIAMOND PENDANT NECKLACE, BY MIKIMOTO

The graduated series of interlocking hoops set with brilliant-cut diamonds, accented by 3.4mm-7.3mm cultured pearls, on a cable-link chain, *diamonds approx. 1.70cts total, pendant and chain signed Mikimoto, lengths: pendant 5.8cm, chain 49.0cm*

£1,000 - 1,500 €1,100 - 1,700

243

A PAIR OF CULTURED PEARL AND DIAMOND EARRINGS

Each 14.0mm or 14.1mm cultured pearl within an articulated series of openwork links, composed of brilliant-cut diamond crescents of colourless and brown tint, *diamonds approx. 2.45cts total, length 6.1cm*

£2,000 - 3,000 €2,200 - 3,400

244

A DIAMOND SINGLE-STONE RING

Set with a brilliant-cut diamond weighing 5.49 carats, between shoulders set with brilliant-cut diamonds, *ring size M (leading edge)*

£25,000 - 35,000 €28,000 - 39,000



243



244



245



246



247



248



246

245

A DIAMOND SINGLE-STONE RING

Designed as two obliquely-set brilliant-cut diamond lobes, each issuing a similarly-set articulating stem with a pear-shaped rose-cut diamond terminal, *brilliant-cut diamonds approx. 0.50ct total, ring size K*

£800 - 1,200

€900 - 1,300

246

A ROCK CRYSTAL, ONYX AND DIAMOND BROOCH AND PENDENT EARRING SUITE, BY BOUCHERON

The openwork pear-shaped plaque set with a fluted panel of rock crystal, accented by rows of brilliant-cut diamonds and a buff top onyx cabochon, highlighted by a central pear-shaped diamond, the pendent earrings en suite, *diamonds approx. 12.50cts total, signed Boucheron, numbered, maker's marks, French assay marks, lengths: brooch 5.3cm, earrings 5.4cm (2)*

£8,000 - 12,000

€9,000 - 13,000

247

AN AMETHYST AND DIAMOND PENDANT NECKLACE, BY CHOPARD

The cushion-shaped mixed-cut amethyst encased by an openwork pendant with quatrefoil motifs, set to the front with brilliant-cut diamonds, suspended from a fancy-link chain with mixed-cut amethyst spacers, mounted in 18 carat white gold, *diamonds approx. 1.35cts total, signed Chopard, numbered, Swiss assay mark, European convention mark, certificate of authenticity, original purchase receipt, lengths: pendant 4.0cm, chain 58.0cm, maker's case and box*

£3,000 - 4,000

€3,400 - 4,500

248

A SINGLE-STONE DIAMOND RING

Set with a brilliant-cut diamond between faceted shoulders pavé-set with brilliant-cut diamonds, *principal diamond approx. 4.90cts, remaining diamonds approx. 1.25cts total, ring size L (leading edge)*

£8,000 - 12,000

€9,000 - 13,000

249

A PAIR OF DIAMOND PENDENT EARRINGS

Each openwork foliate drop set with a trio of old brilliant-cut diamonds, suspended from an articulated row of similarly-cut diamonds, millegrain detail throughout, *diamonds approx. 2.40cts total, length 4.0cm, fitted case*

£3,000 - 5,000 €3,400 - 5,600

250

A DIAMOND BRACELET, CIRCA 1930

Designed as a series of openwork rectangular and fan-shaped links, set throughout with old brilliant, brilliant, rose, single-cut and cushion-shaped diamonds, mounted in gold, *diamonds approx. 13.95cts total, length 17.3cm*

£7,000 - 9,000 €7,900 - 10,000

251

A CULTURED PEARL NECKLACE WITH A SAPPHIRE AND DIAMOND CLASP AND A DIAMOND BROOCH, CIRCA 1915

1st: The double row of 6.2mm-7.0mm cultured pearls to a clasp designed as an openwork cartouche set with circular-cut sapphires, old brilliant and single-cut diamonds, mounted in white gold, 2nd: Of foliate design, millegrain-set with old brilliant-cut diamonds, mounted in white gold, *diamonds approx. 3.15cts total, 1st: clasp converted from a double-clip brooch, lengths: 1st shortest strand 41.5cm, 2nd 5.4cm (2)*

£1,200 - 1,500 €1,300 - 1,700

252

A DIAMOND SINGLE-STONE RING

Set with an old brilliant-cut diamond, weighing 4.48 carats, *ring size O*

£8,000 - 12,000 €9,000 - 13,000

253

AN ART DECO DIAMOND BROOCH, CIRCA 1930

Designed as a buckle with scrolling fan accents to either side, set throughout with old brilliant, rose-cut and cushion-shaped diamonds, mounted in platinum, *old brilliant-cut and cushion-shaped diamonds approx. 12.05cts total, width 7.6cm*

£6,000 - 8,000 €6,700 - 9,000





254

A DIAMOND BAR BROOCH

Designed as a graduated row of millegrain-set old brilliant-cut diamonds, between two cushion-shaped diamond terminals, weighing 3.38 carats and 3.48 carats, *remaining diamonds approx. 0.45ct total, length 3.9cm, cased by Asprey*

£10,000 - 15,000 €11,000 - 17,000

255

A DIAMOND TWO-STONE RING

Obliquely-set with two cushion-shaped diamonds, the band set to the front with single-cut diamonds, *principal diamonds approx. 1.40cts and 1.55cts, ring size J*

£2,500 - 3,500 €2,800 - 3,900

256

A SAPPHIRE AND DIAMOND BROOCH, CIRCA 1915

Set centrally with a cushion-shaped diamond within a surround of similarly-shaped and old brilliant-cut diamonds, with pear-shaped sapphire accents, between elongated fan-shaped plaques of geometric design, set with old brilliant, single and rose-cut diamonds, accented by graduations of calibr -cut sapphires, mounted in silver and gold, *old brilliant and single-cut diamonds approx. 1.55cts total, width 7.0cm*

£800 - 1,200 €900 - 1,300

257

A SAPPHIRE AND DIAMOND CLIP, CIRCA 1920, AND A SAPPHIRE AND DIAMOND CLIP, CIRCA 1930

1st: Designed as an openwork cartouche set with old brilliant and single-cut diamonds, accented by circular and french-cut sapphires, mounted in gold, 2nd: Designed as a stylised fan, set throughout with calibr -cut sapphires, accented by brilliant, old brilliant and single-cut diamonds, mounted in gold, *diamonds approx. 3.00cts total, 1st: one sapphire deficient, 2nd: one diamond deficient, lengths: 1st 3.2cm, 2nd 3.6cm (2)*

£1,200 - 1,500 €1,300 - 1,700

258

A SAPPHIRE AND DIAMOND BRACELET, CIRCA 1925

The strap designed as a series of articulated panels, set with a central row of calibr -cut sapphires between rows of brilliant and single-cut diamonds, mounted in gold, *diamonds approx. 7.90cts total, one diamond deficient, broken link, length 18.0cm*

£1,800 - 2,500 €2,000 - 2,800



259

A CULTURED PEARL NECKLACE

Formed as a single-row of graduated 12.3mm-14.9mm cultured pearls of gold tint, on a magnetic ball clasp, *length 47.6cm*

£2,000 - 3,000 €2,200 - 3,400

260

A GREEN TOURMALINE AND DIAMOND PENDANT

The cushion-shaped green tourmaline collet-set within a hammered mount of bicoloured design, accented by a brilliant-cut diamond, *length 3.9cm*

£2,000 - 2,500 €2,200 - 2,800

261

AN EMERALD AND DIAMOND RING, BY CARTIER

The tapering 18 carat yellow gold band pavé-set to the front with brilliant-cut diamonds and circular emerald cabochons, accented by a central oval cabochon emerald, *diamonds approx. 0.65ct total, signed Cartier, numbered, Swiss assay mark, European convention mark, ring size M½*

£2,000 - 3,000 €2,200 - 3,400

262 Y

A 'MAGIC ALHAMBRA' NECKLACE, BY VAN CLEEF & ARPELS

Composed of 16 grey and white mother-of-pearl and onyx quatrefoils of varying sizes, connected by faceted cable-link chains, mounted in 18 carat yellow gold, *signed VCA, numbered, maker's mark, French and Swiss assay marks, European convention mark, length 125.0cm*

£10,000 - 15,000 €11,000 - 17,000

Please note this lot will be subject to USA Fish and Wildlife regulations if imported into the USA.





263

263

A YELLOW BERYL AND DIAMOND RING

The step-cut yellow beryl between duos of brilliant-cut diamonds, *ring size L½*

£800 - 1,200

€900 - 1,300

264

A PERIDOT BRACELET, BY BOIVIN

The uniform row of articulated oval-shaped links, set throughout with circular-cut peridots, *signed René Boivin, maker's marks, French assay marks, length 17.3cm*

£3,000 - 4,000

€3,400 - 4,500



265

265

AN EMERALD, YELLOW SAPPHIRE AND DIAMOND RING, BY DE GRISOGONO

The oval emerald cabochon within a bombé surround, one half set with circular-cut emeralds the other with similarly-cut yellow sapphires, accented by brilliant-cut diamonds, mounted in 18 carat yellow gold, *diamonds approx. 0.35ct total, signed de Grisogono, numbered, Swiss assay mark, European convention mark, ring size L*

£6,000 - 8,000

€6,700 - 9,000

266

A PAIR OF EMERALD, YELLOW SAPPHIRE AND DIAMOND PENDENT EARRINGS, BY DE GRISOGONO

Each oval bombé plaque pavé-set with circular-cut emeralds blending into circular-cut yellow sapphires, accented by brilliant-cut diamonds, suspended from a row of emerald beads with brilliant-cut diamond roundels and a bombé surmount of similar design to the plaque, *diamonds approx. 1.40cts total, signed de Grisogono Genève, numbered, length 8.0cm*

£4,000 - 6,000

€4,500 - 6,700



266



For details of the charges payable in addition to the final Hammer Price of each Lot please refer to paragraphs 7 & 8 of the Notice to Bidders at the back of the catalogue.



267



267

A GEM-SET 'GRENOUILLE' RING, BY BOUCHERON

Designed as a frog, the body pavé-set throughout with circular-cut rubies, clasping a similarly-cut pink sapphire sphere, the head accented by circular-cut emerald eyes, *signed Boucheron, numbered, maker's mark, rubbed French assay mark, ring size K*

£6,000 - 8,000 €6,700 - 9,000



268



268

A 'MASY, THE CHAMELEON' RING, BY BOUCHERON

Realistically modelled as a colourful chameleon, his tail looping round to form the band, the body pavé-set throughout with circular-cut tsavorite garnets, blue, pink and yellow sapphires, the eyes accented by similarly-cut rubies, *signed Boucheron, numbered, maker's mark, French assay mark, ring size L½*

£8,000 - 12,000 €9,000 - 13,000



269



270



271



272

269

A DIAMOND STAR AND CRESCENT BROOCH, CIRCA 1890

The cushion-shaped, old brilliant, single and rose-cut diamond crescent with a central *en tremblant* star set with similarly-cut diamonds, mounted in silver and gold, *accompanied by two hair ornament fittings and one brooch fitting, cushion-shaped, old brilliant and single-cut diamonds approx. 6.85cts total, length 3.7cm, fitted case by Heinrich Mau, Dresden (4)*

£3,000 - 5,000 €3,400 - 5,600

270

A DIAMOND CLASP, 1780-1800

The octagonal clasp set with rose-cut diamonds in closed back settings on a ground of blue glass, between two rows of cushion-shaped and old brilliant-cut diamonds in pinched collet-settings, mounted in gold, *cushion-shaped and old brilliant-cut diamonds approx. 8.00cts total, length 3.6cm*

£5,000 - 7,000 €5,600 - 7,900

271

A DIAMOND STAR BROOCH, CIRCA 1900

Set throughout with rose, old brilliant-cut and cushion-shaped diamonds, with knifewire detail, mounted in silver and gold, *principal diamond approx. 1.30cts, remaining cushion-shaped and old brilliant-cut diamonds approx. 2.95cts total, length 3.4cm*

£1,500 - 2,000 €1,700 - 2,200

272

A DIAMOND AND PEARL BROOCH, CIRCA 1890

Designed as a rose-cut diamond knifewire arrow with a similarly-set crescent and 4.5mm pearl, mounted in silver and gold, *pearl untested, length 6.3cm*

£800 - 1,200 €900 - 1,300

273

A DIAMOND BANGLE, CIRCA 1880

The hinged cuff set to the front with a circular knifewire plaque of openwork design, between two latticework shoulders with scrolling borders, set throughout with cushion-shaped, old brilliant and rose-cut diamonds, mounted in silver and gold, *principal diamond approx. 1.85cts, remaining cushion-shaped and old brilliant-cut diamonds approx. 8.10cts total, French assay marks, inner diameter 5.8cm*

£4,000 - 6,000 €4,500 - 6,700

274

THREE DIAMOND STAR BROOCHES, CIRCA 1890-1900

Each designed as a star, two with knifewire decoration, set throughout with cushion-shaped, old brilliant and rose-cut diamonds, mounted in silver and gold, *cushion-shaped and old brilliant-cut diamonds approx. 5.20cts total, lengths: 2.8cm, 2.8cm, 2.0cm (3)*

£1,500 - 2,000 €1,700 - 2,200



273



274



275

275

A DIAMOND CORSAGE ORNAMENT, SECOND HALF OF THE 19TH CENTURY

The tapering latticework of knifewires set throughout with cushion-shaped pendants and rose-cut diamond accents, with an openwork cluster of foliate design, similarly-set and detaching to form an additional brooch, the whole terminating with rose-cut and cushion-shaped diamond pampilles, mounted in silver and gold, *diamonds approx. 20.15cts total, accompanied by a collet-set old brilliant-cut diamond, approx. 1.15ct, and an additional brooch fitting, length 13.7c (3)*

£6,000 - 8,000 €6,700 - 9,000

This is an example of the mid-19th century fashion for jewellery "en pampilles". Jewels of this kind were decorated with graduations of cascading gemstones diminishing to a thin tapering point. Various examples of jewellery with gem-set pampilles can be seen in designs by the French jeweller, Bapst (see Henri Vever, 'La Bijouterie Française au XIXe Siècle', Paris, 1906, p.197)

276

A DIAMOND CLUSTER BANGLE, CIRCA 1890

Set with a central cluster of old brilliant-cut diamonds, with a row of similarly-cut diamonds to either side, mounted in silver and gold, *diamonds approx. 3.30cts total, inner diameter 5.6cm*

£1,200 - 1,500 €1,300 - 1,700

277

A DIAMOND BANGLE, CIRCA 1890

Set to the front with a graduation of old brilliant-cut and cushion-shaped diamonds, with rose-cut diamond accents, mounted in gold, *old brilliant-cut and cushion-shaped diamonds approx. 3.55cts total, inner diameter 5.4cm*

£1,500 - 2,000 €1,700 - 2,200

END OF SALE

The next Knightsbridge Jewellery Sale will be held on Wednesday 11th April 2018

275



277

276

Index	Lot No
A. Tanfani	205
Adler	8, 12
Asprey	186
Birks	70
Boivin	187, 264
Boucheron	246, 267, 268
Bulgari	1, 2, 42, 62, 113, 199, 202, 240
Cartier	4, 16, 44, 47, 54, 220, 237, 238, 239, 261
Chaumet	193
Chopard	247
de Grisogono	17, 265, 266
Faraone	61
Fred	133
Garrard	9, 14
Grima	43, 46, 233, 234
Jaeger-Le-Coultre	89
Josarn	22
Julius Cohen	66
Kutchinsky	236
Lalaounis	178, 177, 179
Longines	93
Mikimoto	242
Shaun Leane	15
Tiffany	3, 5, 10, 83, 95, 155, 175
Vallee	222
Van Cleef & Arpels	29, 157, 200, 201, 262
Zolotas	176

Diamond Grading

Colour

GIA	CIBJO	UK TRADITIONAL
D	Exceptional White +	Finest White
E	Exceptional White	Finest White
F	Rare White +	Fine White
G	Rare White	Fine White
H	White	White
I	Slightly Tinted White	Commercial White
J	Slightly Tinted White	Top Silver Cape
K	Tinted White	Top Silver Cape
L	Tinted White	Silver Cape
M to N	Tinted Colour	Light Cape
O to R	Tinted Colour	Cape
R to Z	Tinted Colour	Dark Cape

Clarity

IF	Internally Flawless	No inclusions and only insignificant surface blemishes when viewed under 10X magnification
VVS1-VVS2	Very, Very Slightly Included	Minute inclusions that are incredibly difficult to see under 10X magnification, generally only visible from the back of the stone and may be removed easily by repolishing
VS1-VS2	Very Slightly Included	Minor inclusions that range from difficult (VS1) to slightly easier (VS2) to see under 10X magnification
S11-2	Slightly Included	Noticeable inclusions that are easy (S11) or very easy (S12) to see under 10X magnification
I1-3	Obvious Inclusions	Obvious inclusions that are easily visible under 10X magnification and in some cases may even be seen without magnification

Ring Sizes

English	Metric	American	French/Japanese
A	37.8252	$\frac{1}{2}$	-
A $\frac{1}{2}$	38.4237	$\frac{3}{4}$	-
B	39.0222	1	-
B $\frac{1}{2}$	39.6207	1 $\frac{1}{4}$	-
C	40.2192	1 $\frac{1}{2}$	-
C $\frac{1}{2}$	40.8177	1 $\frac{3}{4}$	-
D	41.4162	2	1
D $\frac{1}{2}$	42.0147	2 $\frac{1}{4}$	2
E	42.6132	2 $\frac{1}{2}$	-
E $\frac{1}{2}$	43.2117	2 $\frac{3}{4}$	3
F	43.8102	3	4
F $\frac{1}{2}$	44.4087	3 $\frac{1}{4}$	-
G	45.0072	3 $\frac{1}{4}$	5
G $\frac{1}{2}$	45.6057	3 $\frac{1}{2}$	-
H	46.2042	3 $\frac{3}{4}$	6
H $\frac{1}{2}$	46.8027	4	-
I	47.4012	4 $\frac{1}{4}$	7
I $\frac{1}{2}$	47.9997	4 $\frac{1}{2}$	8
J	48.5982	4 $\frac{3}{4}$	-
J $\frac{1}{2}$	49.1967	5	9
K	49.7952	5 $\frac{1}{4}$	10
K $\frac{1}{2}$	50.3937	5 $\frac{1}{2}$	-
L	50.9922	5 $\frac{3}{4}$	11
L $\frac{1}{2}$	51.5907	6	-
M	52.1892	6 $\frac{1}{4}$	12
M $\frac{1}{2}$	52.7877	6 $\frac{1}{2}$	13
N	53.4660	6 $\frac{3}{4}$	-
N $\frac{1}{2}$	54.1044	7	14
O	54.7428	7	15
O $\frac{1}{2}$	55.3812	7 $\frac{1}{4}$	-
P	56.0196	7 $\frac{1}{2}$	16
P $\frac{1}{2}$	56.6580	7 $\frac{3}{4}$	-
Q	57.2964	8	17
Q $\frac{1}{2}$	57.9348	8 $\frac{1}{4}$	18
R	58.5732	8 $\frac{1}{2}$	-
R $\frac{1}{2}$	59.2116	8 $\frac{3}{4}$	19
S	59.8500	9	20
S $\frac{1}{2}$	60.4884	9 $\frac{1}{4}$	-
T	61.1268	9 $\frac{1}{2}$	21
T $\frac{1}{2}$	61.7652	9 $\frac{3}{4}$	22
U	62.4026	10	-
U $\frac{1}{2}$	63.0420	10 $\frac{1}{4}$	23
V	63.6804	10 $\frac{1}{2}$	24
V $\frac{1}{2}$	64.3188	10 $\frac{3}{4}$	-
W	64.8774	11	25
W $\frac{1}{2}$	65.4759	11 $\frac{1}{4}$	-
X	66.0744	11 $\frac{1}{2}$	26
X $\frac{1}{2}$	66.6729	11 $\frac{3}{4}$	-
Y	67.2714	12	-
Y $\frac{1}{2}$	67.8699	12 $\frac{1}{4}$	-
Z	68.4684	12 $\frac{1}{2}$	-

INTERNATIONAL JEWELLERY CALENDAR

Auction Calendar 2018

10th April 2018
California Jewellery
Los Angeles

11th April 2018
Jewellery
Knightsbridge

17th April 2018
Fine Jewellery
New York

25th April 2018
Fine Jewellery
New Bond Street

1st May 2018
Rare Jewels and Jadeite
Hong Kong

23rd May 2018
Jewellery
Edinburgh

12th June 2018
California Jewellery
Los Angeles

13th June 2018
Jewellery
Knightsbridge

11th July 2018
Jewellery
Knightsbridge

For further information,
please contact:

London:
Jean Ghika
020 7468 8278
jean.ghika@bonhams.com

Edinburgh:
Nathalie Rodwell
0131 225 2266
Nathalie.Rodwell@bonhams.com

New York:
Caroline Morrissey
+1 212 644 9046
caroline.morrissey@bonhams.com

Los Angeles:
Dana Ehrman
+1 323 436 5407
dana.ehrman@bonhams.com

Hong Kong:
Graeme Thompson
+852 2918 4321
graeme.thompson@bohams.com

NOTICE TO BIDDERS

This notice is addressed by *Bonhams* to any person who may be interested in a *Lot*, including *Bidders* and potential *Bidders* (including any eventual *Buyer* of the *Lot*). For ease of reference we refer to such persons as “*Bidders*” or “*you*”. Our List of Definitions and Glossary is incorporated into this *Notice to Bidders*. It is at Appendix 3 at the back of the *Catalogue*. Where words and phrases are used in this notice which are in the List of Definitions, they are printed in italics.

IMPORTANT: Additional information applicable to the *Sale* may be set out in the *Catalogue* for the *Sale*, in an insert in the *Catalogue* and/or in a notice displayed at the *Sale* venue and you should read them as well. Announcements affecting the *Sale* may also be given out orally before and during the *Sale* without prior written notice. You should be alert to the possibility of changes and ask in advance of bidding if there have been any.

1. OUR ROLE

In its role as *Auctioneer* of *Lots*, *Bonhams* acts solely for and in the interests of the *Seller*. *Bonhams’* job is to sell the *Lot* at the highest price obtainable at the *Sale* to a *Bidder*. *Bonhams* does not act for *Buyers* or *Bidders* in this role and does not give advice to *Buyers* or *Bidders*. When it or its staff make statements about a *Lot* or, if *Bonhams* provides a *Condition Report* on a *Lot* it is doing that on behalf of the *Seller* of the *Lot*. *Bidders* and *Buyers* who are themselves not expert in the *Lots* are strongly advised to seek and obtain independent advice on the *Lots* and their value before bidding for them. The *Seller* has authorised *Bonhams* to sell the *Lot* as its agent on its behalf and, save where we expressly make it clear to the contrary, *Bonhams* acts only as agent for the *Seller*. Any statement or representation we make in respect of a *Lot* is made on the *Seller’s* behalf and, unless *Bonhams* sells a *Lot* as principal, not on our behalf and any *Contract* for *Sale* is between the *Buyer* and the *Seller* and not with us. If *Bonhams* sells a *Lot* as principal this will either be stated in the *Catalogue* or an announcement to that effect will be made by the *Auctioneer*, or it will be stated in a notice at the *Sale* or an insert in the *Catalogue*.

Bonhams does not owe or undertake or agree to any duty or responsibility to you in contract or tort (whether direct, collateral, express, implied or otherwise). If you successfully bid for a *Lot* and buy it, at that stage *Bonhams* does enter into an agreement with the *Buyer*. The terms of that contract are set out in our *Buyer’s Agreement*, which you will find at Appendix 2 at the back of the *Catalogue*. This will govern *Bonhams’* relationship with the *Buyer*.

2. LOTS

Subject to the *Contractual Description* printed in bold letters in the *Entry* about the *Lot* in the *Catalogue* (see paragraph 3 below), *Lots* are sold to the *Buyer* on an “as is” basis, with all faults and imperfections. Illustrations and photographs contained in the *Catalogue* (other than photographs forming part of the *Contractual Description*) or elsewhere of any *Lots* are for identification purposes only. They may not reveal the true condition of the *Lot*. A photograph or illustration may not reflect an accurate reproduction of the colour(s) of the *Lot*. *Lots* are available for inspection prior to the *Sale* and it is for you to satisfy yourself as to each and every aspect of a *Lot*, including its authorship, attribution, condition, provenance, history, background, authenticity, style, period, age, suitability, quality, roadworthiness (if relevant), origin, value and estimated selling price (including the *Hammer Price*). It is your responsibility to examine any *Lot* in which you are interested. It should be remembered that the actual condition of a *Lot* may not be as good as that indicated by its outward appearance. In particular, parts may have been replaced or renewed and *Lots* may not be authentic or of satisfactory quality; the inside of a *Lot* may not be visible and may not be original or may be damaged, as for example where it is covered by upholstery or material. Given the age of many *Lots* they may have been damaged and/or repaired and you should not assume that a *Lot* is in good condition. Electronic or mechanical parts may not operate or may not comply with current statutory requirements. You should not assume that electrical items designed to operate on mains electricity will be suitable for connection to the mains electricity supply and you should obtain a report from a qualified electrician on their status before doing so. Such items which are unsuitable for connection

are sold as items of interest for display purposes only. If you yourself do not have expertise regarding a *Lot*, you should consult someone who does to advise you. We can assist in arranging facilities for you to carry out or have carried out more detailed inspections and tests. Please ask our staff for details.

Any person who damages a *Lot* will be held liable for the loss caused.

3. DESCRIPTIONS OF LOTS AND ESTIMATES

Contractual Description of a Lot

The *Catalogue* contains an *Entry* about each *Lot*. Each *Lot* is sold by its respective *Seller* to the *Buyer* of the *Lot* as corresponding only with that part of the *Entry* which is printed in bold letters and (except for the colour, which may be inaccurately reproduced) with any photograph of the *Lot* in the *Catalogue*. The remainder of the *Entry*, which is not printed in bold letters, represents *Bonhams’* opinion (given on behalf of the *Seller*) about the *Lot* only and is not part of the *Contractual Description* in accordance with which the *Lot* is sold by the *Seller*.

Estimates

In most cases, an *Estimate* is printed beside the *Entry*. *Estimates* are only an expression of *Bonhams’* opinion made on behalf of the *Seller* of the range where *Bonhams* thinks the *Hammer Price* for the *Lot* is likely to fall; it is not an *Estimate* of value. It does not take into account any VAT or *Buyer’s Premium* payable or any other fees payable by the *Buyer*, which are detailed in paragraph 7 of the *Notice to Bidders*, below. *Lots* can in fact sell for *Hammer Prices* below and above the *Estimate*. Any *Estimate* should not be relied on as an indication of the actual selling price or value of a *Lot*. *Estimates* are in the currency of the *Sale*.

Condition Reports

In respect of most *Lots*, you may ask for a *Condition Report* on its physical condition from *Bonhams*. If you do so, this will be provided by *Bonhams* on behalf of the *Seller* free of charge. *Bonhams* is not entering into a contract with you in respect of the *Condition Report* and accordingly does not assume responsibility to you in respect of it. Nor does the *Seller* owe or agree to owe you as a *Bidder* any obligation or duty in respect of this free report about a *Lot*, which is available for your own inspection or for inspection by an expert instructed by you. However, any written *Description* of the physical condition of the *Lot* contained in a *Condition Report* will form part of the *Contractual Description* of the *Lot* under which it is sold to any *Buyer*.

The Seller’s responsibility to you

The *Seller* does not make or agree to make any representation of fact or contractual promise, *Guarantee* or warranty and undertakes no obligation or duty, whether in contract or in tort (other than to the eventual *Buyer* as set out above), in respect of the accuracy or completeness of any statement or representation made by him or on his behalf, which is in any way descriptive of any *Lot* or as to the anticipated or likely selling price of any *Lot*. Other than as set out above, no statement or representation in any way descriptive of a *Lot* or any *Estimate* is incorporated into any *Contract* for *Sale* between a *Seller* and a *Buyer*.

Bonhams’ responsibility to you

You have the opportunity of examining the *Lot* if you want to and the *Contract* for *Sale* for a *Lot* is with the *Seller* and not with *Bonhams*; *Bonhams* acts as the *Seller’s* agent only (unless *Bonhams* sells the *Lot* as principal).

Bonhams undertakes no obligation to you to examine, investigate or carry out any tests, either in sufficient depth or at all, on each *Lot* to establish the accuracy or otherwise of any *Descriptions* or opinions given by *Bonhams*, or by any person on *Bonhams’* behalf, whether in the *Catalogue* or elsewhere.

You should not suppose that such examinations, investigations or tests have occurred.

Bonhams does not make or agree to make any representation of fact, and undertakes no obligation or duty (whether in contract or tort) in respect of the accuracy or completeness of any statement or representation made by *Bonhams* or on *Bonhams’* behalf which is in any way descriptive of any *Lot*

or as to the anticipated or likely selling price of any *Lot*. No statement or representation by *Bonhams* or on its behalf in any way descriptive of any *Lot* or any *Estimate* is incorporated into our *Buyer’s Agreement*.

Alterations

Descriptions and *Estimates* may be amended at *Bonhams’* discretion from time to time by notice given orally or in writing before or during a *Sale*.

THE *LOT* IS AVAILABLE FOR INSPECTION AND YOU MUST FORM YOUR OWN OPINION IN RELATION TO IT. YOU ARE STRONGLY ADVISED TO EXAMINE ANY *LOT* OR HAVE IT EXAMINED ON YOUR BEHALF BEFORE THE *SALE*.

4. CONDUCT OF THE SALE

Our *Sales* are public auctions which persons may attend and you should take the opportunity to do so. We do reserve the right at our sole discretion to refuse admission to our premises or to any *Sale* without stating a reason. We have complete discretion as to whether the *Sale* proceeds, whether any *Lot* is included in the *Sale*, the manner in which the *Sale* is conducted and we may offer *Lots* for *Sale* in any order we choose notwithstanding the numbers given to *Lots* in the *Catalogue*. You should therefore check the date and starting time of the *Sale*, whether there have been any withdrawals or late entries. Remember that withdrawals and late entries may affect the time at which a *Lot* you are interested in is put up for *Sale*. We have complete discretion to refuse any bid, to nominate any bidding increment we consider appropriate, to divide any *Lot*, to combine two or more *Lots*, to withdraw any *Lot* from a *Sale* and, before the *Sale* has been closed, to put up any *Lot* for auction again. Auction speeds can exceed 100 *Lots* to the hour and bidding increments are generally about 10%. However these do vary from *Sale* to *Sale* and from *Auctioneer* to *Auctioneer*. Please check with the department organising the *Sale* for advice on this. Where a *Reserve* has been applied to a *Lot*, the *Auctioneer* may, in his absolute discretion, place bids (up to an amount not equalling or exceeding such *Reserve*) on behalf of the *Seller*. We are not responsible to you in respect of the presence or absence of any *Reserve* in respect of any *Lot*. If there is a *Reserve* it will normally be no higher than the lower figure for any *Estimate* in the *Catalogue*, assuming that the currency of the *Reserve* has not fluctuated adversely against the currency of the *Estimate*. The *Buyer* will be the *Bidder* who makes the highest bid acceptable to the *Auctioneer* for any *Lot* (subject to any applicable *Reserve*) to whom the *Lot* is knocked down by the *Auctioneer* at the fall of the *Auctioneer’s* hammer. Any dispute as to the highest acceptable bid will be settled by the *Auctioneer* in his absolute discretion. All bids tendered will relate to the actual *Lot* number announced by the *Auctioneer*. An electronic currency converter may be used at the *Sale*. This equipment is provided as a general guide as to the equivalent amount in certain currencies of a given bid. We do not accept any responsibility for any errors which may occur in the use of the currency converter. We may use video cameras to record the *Sale* and may record telephone calls for reasons of security and to assist in solving any disputes which may arise in relation to bids made at the *Sale*. At some *Sales*, for example, jewellery *Sales*, we may use screens on which images of the *Lots* will be projected. This service is provided to assist viewing at the *Sale*. The image on the screen should be treated as an indication only of the current *Lot*. It should be noted that all bids tendered will relate to the actual *Lot* number announced by the *Auctioneer*. We do not accept any responsibility for any errors which may occur in the use of the screen.

5. BIDDING

We do not accept bids from any person who has not completed and delivered to us one of our *Bidding Forms*, either our *Bidder Registration Form*, *Absentee Bidding Form* or *Telephone Bidding Form*. You will be asked for proof of identity, residence and references, which, when asked for, you must supply if your bids are to be accepted by us. Please bring your passport, driving licence (or similar photographic proof of identity) and proof of address. We may request a deposit from you before allowing you to bid. We may refuse entry to a *Sale* to any person even if that person has completed a *Bidding Form*.

Bidding in person

You should come to our *Bidder* registration desk at the *Sale* venue and fill out a *Bidder* Registration Form on (or, if possible, before) the day of the *Sale*. The bidding number system is sometimes referred to as "paddle bidding". You will be issued with a large card (a "paddle") with a printed number on it. This will be attributed to you for the purposes of the *Sale*. Should you be a successful *Bidder* you will need to ensure that your number can be clearly seen by the *Auctioneer* and that it is your number which is identified as the *Buyer's*. You should not let anyone else use your paddle as all *Lots* will be invoiced to the name and address given on your *Bidder* Registration Form. Once an invoice is issued it will not be changed. If there is any doubt as to the *Hammer Price* of, or whether you are the successful *Bidder* of, a particular *Lot*, you must draw this to the attention of the *Auctioneer* before the next *Lot* is offered for *Sale*. At the end of the *Sale*, or when you have finished bidding please return your paddle to the *Bidder* registration desk.

Bidding by telephone

If you wish to bid at the *Sale* by telephone, please complete a *Telephone Bidding Form*, which is available from our offices or in the *Catalogue*. Please then return it to the office responsible for the *Sale* at least 24 hours in advance of the *Sale*. It is your responsibility to check with our Bids Office that your bid has been received. Telephone calls will be recorded. The telephone bidding facility is a discretionary service and may not be available in relation to all *Lots*. We will not be responsible for bidding on your behalf if you are unavailable at the time of the *Sale* or if the telephone connection is interrupted during bidding. Please contact us for further details.

Bidding by post or fax

Absentee *Bidding Forms* can be found in the back of this *Catalogue* and should be completed and sent to the office responsible for the *Sale*. It is in your interests to return your form as soon as possible, as if two or more *Bidders* submit identical bids for a *Lot*, the first bid received takes preference. In any event, all bids should be received at least 24 hours before the start of the *Sale*. Please check your Absentee *Bidding Form* carefully before returning it to us, fully completed and signed by you. It is your responsibility to check with our Bids Office that your bid has been received. This additional service is complimentary and is confidential. Such bids are made at your own risk and we cannot accept liability for our failure to receive and/or place any such bids. All bids made on your behalf will be made at the lowest level possible subject to *Reserves* and other bids made for the *Lot*. Where appropriate your bids will be rounded down to the nearest amount consistent with the *Auctioneer's* bidding increments. New *Bidders* must also provide proof of identity and address when submitting bids. Failure to do this will result in your bid not being placed.

Bidding via the internet

Please visit our *Website* at <http://www.bonhams.com> for details of how to bid via the internet.

Bidding through an agent

Bids will be accepted as placed on behalf of the person named as the principal on the *Bidding Form* although we may refuse to accept bids from an agent on behalf of a principal and will require written confirmation from the principal confirming the agent's authority to bid. Nevertheless, as the *Bidding Form* explains, any person placing a bid as agent on behalf of another (whether or not he has disclosed that fact or the identity of his principal) will be jointly and severally liable with the principal to the *Seller* and to *Bonhams* under any contract resulting from the acceptance of a bid. Subject to the above, please let us know if you are acting on behalf of another person when bidding for *Lots* at the *Sale*.

Equally, please let us know if you intend to nominate another person to bid on your behalf at the *Sale* unless this is to be carried out by us pursuant to a *Telephone* or *Absentee Bidding Form* that you have completed. If we do not approve the agency arrangements in writing before the *Sale*, we are entitled to assume that the person bidding at the *Sale* is bidding on his own behalf. Accordingly, the person bidding at the *Sale* will be the *Buyer* and will be liable to pay the *Hammer Price* and

Buyer's Premium and associated charges. If we approve the identity of your client in advance, we will be in a position to address the invoice to your principal rather than you. We will require proof of the agent's client's identity and residence in advance of any bids made by the agent on his behalf. Please refer to our *Conditions of Business* and contact our Customer Services Department for further details.

6. CONTRACTS BETWEEN THE BUYER AND SELLER AND THE BUYER AND BONHAMS

On the *Lot* being knocked down to the *Buyer*, a *Contract for Sale* of the *Lot* will be entered into between the *Seller* and the *Buyer* on the terms of the *Contract for Sale* set out in Appendix 1 at the back of the *Catalogue*. You will be liable to pay the *Purchase Price*, which is the *Hammer Price* plus any applicable VAT. At the same time, a separate contract is also entered into between us as *Auctioneers* and the *Buyer*. This is our *Buyer's Agreement*, the terms of which are set out in Appendix 2 at the back of the *Catalogue*. Please read the terms of the *Contract for Sale* and our *Buyer's Agreement* contained in the *Catalogue* in case you are the successful *Bidder*. We may change the terms of either or both of these agreements in advance of their being entered into, by setting out different terms in the *Catalogue* and/or by placing an insert in the *Catalogue* and/or by notices at the *Sale* venue and/or by oral announcements before and during the *Sale*. You should be alert to this possibility of changes and ask if there have been any.

7. BUYER'S PREMIUM AND OTHER CHARGES PAYABLE BY THE BUYER

Under the *Buyer's Agreement*, a premium (the *Buyer's Premium*) is payable to us by the *Buyer* in accordance with the terms of the *Buyer's Agreement* and at rates set out below, calculated by reference to the *Hammer Price* and payable in addition to it. For this *Sale* the following rates of *Buyer's Premium* will be payable by *Buyers* of *Lots*:

25% up to £175,000 of the *Hammer Price*
20% from £175,001 to £3,000,000 of the *Hammer Price*
12.5% from £3,000,001 of the *Hammer Price*

Storage and handling charges may also be payable by the *Buyer* as detailed on the specific *Sale* Information page at the front of the catalogue.

The *Buyer's Premium* and all other charges payable to us by the *Buyer* are subject to VAT at the prevailing rate, currently 20%.

VAT may also be payable on the *Hammer Price* of the *Lot*, where indicated by a symbol beside the *Lot* number. See paragraph 8 below for details.

On certain *Lots*, which will be marked "AR" in the *Catalogue* and which are sold for a *Hammer Price* of €1,000 or greater (converted into the currency of the *Sale* using the European Central Bank Reference rate prevailing on the date of the *Sale*), the *Additional Premium* will be payable to us by the *Buyer* to cover our *Expenses* relating to the payment of royalties under the Artists Resale Right Regulations 2006. The *Additional Premium* will be a percentage of the amount of the *Hammer Price* calculated in accordance with the table below, and shall not exceed €12,500 (converted into the currency of the *Sale* using the European Central Bank Reference rate prevailing on the date of the *Sale*).

<i>Hammer Price</i>	Percentage amount
From €0 to €50,000	4%
From €50,000.01 to €200,000	3%
From €200,000.01 to €350,000	1%
From €350,000.01 to €500,000	0.5%
Exceeding €500,000	0.25%

8. VAT

The prevailing rate of VAT at the time of going to press is 20%, but this is subject to government change and the rate payable will be the rate in force on the date of the *Sale*.

The following symbols, shown beside the *Lot* number, are used to denote that VAT is due on the *Hammer Price* and *Buyer's Premium*:

- † VAT at the prevailing rate on *Hammer Price* and *Buyer's Premium*
- Ω VAT on imported items at the prevailing rate on *Hammer Price* and *Buyer's Premium*
- * VAT on imported items at a preferential rate of 5% on *Hammer Price* and the prevailing rate on *Buyer's Premium*
- G Gold bullion exempt from VAT on the *Hammer Price* and subject to VAT at the prevailing rate on the *Buyer's Premium*
- Zero rated for VAT, no VAT will be added to the *Hammer Price* or the *Buyer's Premium*
- α *Buyers* from within the EU: VAT is payable at the prevailing rate on just the *Buyer's Premium* (NOT the *Hammer Price*). *Buyers* from outside the EU: VAT is payable at the prevailing rate on both *Hammer Price* and *Buyer's Premium*. If a *Buyer*, having registered under a non-EU address, decides that the item is not to be exported from the EU, then he should advise *Bonhams* immediately.

In all other instances no VAT will be charged on the *Hammer Price*, but VAT at the prevailing rate will be added to *Buyer's Premium* which will be invoiced on a VAT inclusive basis.

9. PAYMENT

It is of critical importance that you ensure that you have readily available funds to pay the *Purchase Price* and the *Buyer's Premium* (plus VAT and any other charges and *Expenses* to us) in full before making a bid for the *Lot*. If you are a successful *Bidder*, payment will be due to us by 4.30 pm on the second working day after the *Sale* so that all sums are cleared by the eighth working day after the *Sale*. Payments made by anyone other than the registered *Buyer* will not be accepted. *Bonhams* reserves the right to vary the terms of payment at any time.

Bonhams' preferred payment method is by bank transfer.

You may electronically transfer funds to our *Trust Account*. If you do so, please quote your paddle number and invoice number as the reference. Our *Trust Account* details are as follows:

Bank: National Westminster Bank Plc
Address: PO Box 4RY
250 Regent Street
London W1A 4RY
Account Name: Bonhams 1793 Limited Trust Account
Account Number: 25563009
Sort Code: 56-00-27
IBAN Number: GB 33 NWBK 560027 25563009

If paying by bank transfer, the amount received after the deduction of any bank fees and/or conversion of the currency of payment to pounds sterling must not be less than the sterling amount payable, as set out on the invoice.

Payment may also be made by one of the following methods:

Sterling personal cheque drawn on a UK branch of a bank or building society: all cheques must be cleared before you can collect your purchases and should be made payable to Bonhams 1793 Limited.

Cash: you may pay for *Lots* purchased by you at this *Sale* with notes or coins in the currency in which the *Sale* is conducted (but not any other currency) provided that the total amount payable by you in respect of all *Lots* purchased by you at the *Sale* does not exceed £3,000, or the equivalent in the currency in which the *Sale* is conducted, at the time when payment is made. If the amount payable by you for *Lots* exceeds that sum, the balance must be paid otherwise than in coins or notes; this limit applies to both payment at our premises and direct deposit into our bank account.

Debit cards (including China Union Pay (CUP) cards and debit cards issued by Visa and MasterCard only). There is no limit on payment value if payment is made in person using Chip & Pin verification.

Payment by telephone may also be accepted up to £5,000, subject to appropriate verification procedures, although this facility is not available for first time buyers. If the amount payable by you for *Lots* exceeds that sum, the balance must be paid by other means.

Credit cards (including China Union Pay (CUP) cards and credit cards issued by Visa and MasterCard only). There is a £5,000 limit on payment value if payment is made in person using Chip & Pin verification.

It may be advisable to notify your debit or credit card provider of your intended purchase in advance to reduce delays caused by us having to seek authority when you come to pay.

Note: only one debit or credit card may be used for payment of an account balance. If you have any questions with regards to card payments, please contact our Customer Services Department.

10. COLLECTION AND STORAGE

The *Buyer* of a *Lot* will not be allowed to collect it until payment in full and in cleared funds has been made (unless we have made a special arrangement with the *Buyer*). For collection and removal of purchased *Lots*, please refer to *Sale* Information at the front of the *Catalogue*. Our offices are open 9.00am – 5pm Monday to Friday. Details relating to the collection of a *Lot*, the storage of a *Lot* and our *Storage Contractor* after the *Sale* are set out in the *Catalogue*.

11. SHIPPING

For information and estimates on domestic and international shipping as well as export licenses please contact Alban Shipping on +44 (0) 1582 493 099 enquiries@albanshipping.co.uk

12. EXPORT/TRADE RESTRICTIONS

It is your sole responsibility to comply with all export and import regulations relating to your purchases and also to obtain any relevant export and/or import licence(s). Export licences are issued by Arts Council England and application forms can be obtained from its Export Licensing Unit. The detailed provisions of the export licencing arrangements can be found on the ACE website <http://www.artscouncil.org.uk/what-we-do/supporting-museums/cultural-property/export-controls/export-licensing/> or by phoning ACE on +44 (0)20 7973 5188. The need for import licences varies from country to country and you should acquaint yourself with all relevant local requirements and provisions. The refusal of any import or export licence(s) or any delay in obtaining such licence(s) shall not permit the rescission of any *Sale* nor allow any delay in making full payment for the *Lot*. Generally, please contact our shipping department before the *Sale* if you require assistance in relation to export regulations.

13. CITES REGULATIONS

Please be aware that all *Lots* marked with the symbol Y are subject to CITES regulations when exporting these items outside the EU. These regulations may be found at <http://www.defra.gov.uk/ahvla-en/imports-exports/cites/> or may be requested from:

Animal Health and Veterinary Laboratories Agency (AHVLA)
Wildlife Licencing
Floor 1, Zone 17, Temple Quay House
2 The Square, Temple Quay
BRISTOL BS1 6EB
Tel: +44 (0) 117 372 8774

14. THE SELLERS AND/OR BONHAMS' LIABILITY

Other than any liability of the *Seller* to the *Buyer* of a *Lot* under the *Contract for Sale*, neither we nor the *Seller* are liable (whether in negligence or otherwise) for any error or misdescription or omission in any *Description* of a *Lot* or any *Estimate* in respect of it, whether contained in the *Catalogue* or

otherwise, whether given orally or in writing and whether given before or during the *Sale*. Neither we nor the *Seller* will be liable for any loss of *Business*, profits, revenue or income, or for loss of reputation, or for disruption to *Business* or wasted time on the part of management or staff, or for indirect losses or consequential damages of any kind, irrespective in any case of the nature, volume or source of the loss or damage alleged to be suffered, and irrespective of whether the said loss or damage is caused by or claimed in respect of any negligence, other tort, breach of contract (if any) or statutory duty, restitutionary claim or otherwise. In any circumstances where we and/or the *Seller* are liable in relation to any *Lot* or any *Description* or *Estimate* made of any *Lot*, or the conduct of any *Sale* in relation to any *Lot*, whether in damages, for an indemnity or contribution, or for a restitutionary remedy or otherwise, our and/or the *Seller's* liability (combined, if both we and the *Seller* are liable) will be limited to payment of a sum which will not exceed by way of maximum the amount of the *Purchase Price* of the *Lot* irrespective in any case of the nature, volume or source of any loss or damage alleged to be suffered or sum claimed as due, and irrespective of whether the liability arises from any negligence, other tort, breach of contract (if any) or statutory duty or otherwise. Nothing set out above will be construed as excluding or restricting (whether directly or indirectly) our liability or excluding or restricting any person's rights or remedies in respect of (i) fraud, or (ii) death or personal injury caused by our negligence (or by the negligence of any person under our control or for whom we are legally responsible), or (iii) acts or omissions for which we are liable under the Occupiers Liability Act 1957, or (iv) any other liability to the extent the same may not be excluded or restricted as a matter of law or (v) our undertakings under paragraphs 9 (in relation to specialist *Stamp* or *Book Sales* only) and 10 of the *Buyer's Agreement*. The same applies in respect of the *Seller*, as if references to us in this paragraph were substituted with references to the *Seller*.

15. BOOKS

As stated above, all *Lots* are sold on an "as is" basis, subject to all faults, imperfections and errors of *Description* save as set out below. However, you will be entitled to reject a *Book* in the circumstances set out in paragraph 11 of the *Buyers Agreement*. Please note that *Lots* comprising printed *Books*, unframed maps and bound manuscripts are not liable to VAT on the *Buyer's Premium*.

16. CLOCKS AND WATCHES

All *Lots* are sold "as is", and the absence of any reference to the condition of a clock or watch does not imply that the *Lot* is in good condition and without defects, repairs or restorations. Most clocks and watches have been repaired in the course of their normal lifetime and may now incorporate parts not original to them. Furthermore, *Bonhams* makes no representation or warranty that any clock or watch is in working order. As clocks and watches often contain fine and complex mechanisms, *Bidders* should be aware that a general service, change of battery or further repair work, for which the *Buyer* is solely responsible, may be necessary. *Bidders* should be aware that the importation of watches such as Rolex, Frank Muller and Corum into the United States is highly restricted. These watches may not be shipped to the USA and can only be imported personally.

17. FIREARMS – PROOF, CONDITION AND CERTIFICATION

Proof of Firearms

The term "proof exemption" indicates that a firearm has been examined at a Proof House, but not proved, as either (a) it was deemed of interest and not intended for use, or (b) ammunition was not available. In either case, the firearm must be regarded as unsafe to fire unless subsequently proved. Firearms proved for Black Powder should not be used with smokeless ammunition.

The term "Certificate of Unprovability" indicates that a firearm has been examined at a Proof House and is deemed both unsuitable for proof and use. Reproof is required before any such firearm is to be used.

Guns Sold as Parts

Barrels of guns sold as parts will only be made available for

sleeving and measurements once rendered unserviceable according to the Gun Barrel Proof Act of 1968 to 1978 and the Rules of Proof.

Condition of Firearms

Comment in this *Catalogue* is restricted, in general, to exceptional condition and to those defects that might affect the immediate safety of a firearm in normal use. An intending *Bidder* unable to make technical examinations and assessments is recommended to seek advice from a gunmaker or from a modern firearms specialist. All prospective *Bidders* are advised to consult the ° of bore and wall-thickness measurements posted in the saleroom and available from the department. *Bidders* should note that guns are stripped only where there is a strong indication of a mechanical malfunction. Stripping is not, otherwise, undertaken. Guns intended for use should be stripped and cleaned beforehand. Hammer guns should have their rebound mechanisms checked before use. The safety mechanisms of all guns must be tested before use. All measurements are approximate.

Original Gun Specifications Derived from Gunmakers

The Sporting Gun Department endeavours to confirm a gun's original specification and date of manufacture with makers who hold their original records.

Licensing Requirements Firearms Act 1968 as amended

Bonhams is constantly reviewing its procedures and would remind you that, in the case of firearms or shotguns subject to certification, to conform with current legislation, *Bonhams* is required to see, as appropriate, your original registered firearms dealer's certificate / shot gun certificate / firearm certificate / museum firearms licence / Section 5 authority or import licence (or details of any exemption from which you may benefit, for instance Crown servant status) for the firearm(s) you have purchased prior to taking full payment of the amount shown on your invoice. Should you not already be in possession of such an authority or exemption, you are required to initially pay a deposit of 95% of the total invoice with the balance of 5% payable on presentation of your valid certificate or licence showing your authority to hold the firearm(s) concerned.

Please be advised that if a successful *Bidder* is then unable to produce the correct paperwork, the *Lot(s)* will be reoffered by *Bonhams* in the next appropriate *Sale*, on standard terms for *Sellers*, and you will be responsible for any loss incurred by *Bonhams* on the original *Sale* to you.

In the case of RFD certificates and Section 5 authorities, we wish to keep an up-to-date copy on file. Please supply us with a Fax or photocopy. It would be helpful if you could send us an updated copy whenever your certificate or authority is renewed or changed.

Lots marked 'S1' and bearing red labels are Section 1 firearms and require a valid British Firearms certificate, RFD Licence or import licence.

Lots marked 'S2' and bearing blue labels are Section 2 firearms and require a valid British Shotgun certificate, RFD licence or import licence.

Lots marked 'S5' and bearing specially marked red labels are Section 5 prohibited firearms and require a valid Section 5 Authority or import licence.

Lots marked with a 'S58' and bearing yellow labels are for obsolete calibres and no licence is required unless ammunition is held.

Unmarked *Lots* require no licence.

Please do not hesitate to contact the Modern Sporting Gun Department should you have any queries.

Taxidermy and Related Items

As a *Seller* of these articles, *Bonhams* undertakes to comply fully with Cites and DEFRA regulations. *Buyers* are advised to inform themselves of all such regulations and should expect the exportation of items to take some time to arrange.

18. FURNITURE

Upholstered Furniture

Whilst we take every care in cataloguing furniture which has been upholstered we offer no *Guarantee* as to the originality of the wood covered by fabric or upholstery.

19. JEWELLERY

Gemstones

Historically many gemstones have been subjected to a variety of treatments to enhance their appearance. Sapphires and rubies are routinely heat treated to improve their colour and clarity, similarly emeralds are frequently treated with oils or resin for the same purpose. Other treatments such as staining, irradiation or coating may have been used on other gemstones. These treatments may be permanent, whilst others may need special care or re-treatment over the years to retain their appearance. *Bidders* should be aware that *Estimates* assume that gemstones may have been subjected to such treatments. A number of laboratories issue certificates that give more detailed *Descriptions* of gemstones. However there may not be consensus between different laboratories on the degrees, or types of treatment for any particular gemstone. In the event that *Bonhams* has been given or has obtained certificates for any *Lot* in the *Sale* these certificates will be disclosed in the *Catalogue*. Although, as a matter of policy, *Bonhams* endeavours to provide certificates from recognised laboratories for certain gemstones, it is not feasible to obtain certificates for each *Lot*. In the event that no certificate is published in the *Catalogue*, *Bidders* should assume that the gemstones may have been treated. Neither *Bonhams* nor the *Seller* accepts any liability for contradictions or differing certificates obtained by *Buyers* on any *Lots* subsequent to the *Sale*.

Estimated Weights

If a stone(s) weight appears within the body of the *Description* in capital letters, the stone(s) has been unmounted and weighed by *Bonhams*. If the weight of the stone(s) is stated to be approximate and does not appear in capital letters, the stone(s) has been assessed by us within its/their settings, and the stated weight is a statement of our opinion only. This information is given as a guide and *Bidders* should satisfy themselves with regard to this information as to its accuracy.

Signatures

1. A diamond brooch, by Kutchinsky

When the maker's name appears in the title, in *Bonhams'* opinion the piece is by that maker.

2. A diamond brooch, signed Kutchinsky

Has a signature that, in *Bonhams'* opinion, is authentic but may contain gemstones that are not original, or the piece may have been altered.

3. A diamond brooch, mounted by Kutchinsky

Has been created by the jeweller, in *Bonhams'* opinion, but using stones or designs supplied by the client.

20. PHOTOGRAPHS

Explanation of Catalogue Terms

- "Bill Brandt": in our opinion a work by the artist.
- "Attributed to Bill Brandt": in our opinion probably a work by the artist, but less certainty to authorship is expressed than in the preceding category.
- "Signed and/or titled and/or dated and/or inscribed": in our opinion the signature and/or title and/or date and/or inscription are in the artist's hand.
- "Signed and/or titled and/or dated and/or inscribed in another hand": in our opinion the signature and/or title and/or date and/or inscription have been added by another hand.
- The date given is that of the image (negative). Where no further date is given, this indicates that the photographic print is vintage (the term "vintage" may also be included in the *Lot Description*). A vintage photograph is one which was made within approximately 5-10 years of the negative. Where a second, later date appears, this refers to the date of printing. Where the exact printing date is not known, but understood to be later, "printed later" will appear in the *Lot Description*.

- Unless otherwise specified, dimensions given are those of the piece of paper on which the image is printed, including any margins. Some photographs may appear in the *Catalogue* without margins illustrated.
- All photographs are sold unframed unless stated in the *Lot Description*.

21. PICTURES

Explanation of Catalogue Terms

The following terms used in the *Catalogue* have the following meanings but are subject to the general provisions relating to *Descriptions* contained in the *Contract for Sale*:

- "Jacopo Bassano": in our opinion a work by the artist. When the artist's forename(s) is not known, a series of asterisks, followed by the surname of the artist, whether preceded by an initial or not, indicates that in our opinion the work is by the artist named;
- "Attributed to Jacopo Bassano": in our opinion probably a work by the artist but less certainty as to authorship is expressed than in the preceding category;
- "Studio/Workshop of Jacopo Bassano": in our opinion a work by an unknown hand in a studio of the artist which may or may not have been executed under the artist's direction;
- "Circle of Jacopo Bassano": in our opinion a work by a hand closely associated with a named artist but not necessarily his pupil;
- "Follower of Jacopo Bassano": in our opinion a work by a painter working in the artist's style, contemporary or nearly contemporary, but not necessarily his pupil;
- "Manner of Jacopo Bassano": in our opinion a work in the style of the artist and of a later date;
- "After Jacopo Bassano": in our opinion, a copy of a known work of the artist;
- "Signed and/or dated and/or inscribed": in our opinion the signature and/or date and/or inscription are from the hand of the artist;
- "Bears a signature and/or date and/or inscription": in our opinion the signature and/or date and/or inscription have been added by another hand.

22. PORCELAIN AND GLASS

Damage and Restoration

For your guidance, in our *Catalogues* we detail, as far as practicable, recorded all significant defects, cracks and restoration. Such practicable *Descriptions* of damage cannot be definitive, and in providing *Condition Reports*, we cannot *Guarantee* that there are no other defects present which have not been mentioned. *Bidders* should satisfy themselves by inspection, as to the condition of each *Lot*. Please see the *Contract for Sale* printed in this *Catalogue*. Because of the difficulty in determining whether an item of glass has been repolished, in our *Catalogues* reference is only made to visible chips and cracks. No mention is made of repolishing, severe or otherwise.

23. VEHICLES

The Veteran Car Club of Great Britain

Dating Plates and Certificates

When mention is made of a Veteran Car Club Dating Plate or Dating Certificate in this *Catalogue*, it should be borne in mind that the Veteran Car Club of Great Britain using the services of Veteran Car Company Ltd, does from time to time, review cars already dated and, in some instances, where fresh evidence becomes available, the review can result in an alteration of date. Whilst the Club and Veteran Car Company Ltd make every effort to ensure accuracy, the date shown on the Dating Plate or Dating Certificate cannot be guaranteed as correct and intending purchasers should make their own enquiries as to the date of the car.

24. WINE

Lots which are lying under Bond and those liable to VAT may not be available for immediate collection.

Examining the wines

It is occasionally possible to provide a pre-*Sale* tasting for larger parcels (as defined below). This is generally limited to more recent and everyday drinking wines. Please contact the department for details.

Olt is not our policy to inspect every unopened case. In the case of wines older than 20 years the boxes will usually have been opened and levels and appearance noted in the *Catalogue* where necessary. You should make proper allowance for variations in ullage levels and conditions of corks, capsules and labels.

Corks and Ullages

Ullage refers to the space between the base of the cork and the wine. Ullage levels for Bordeaux shaped bottles are only normally noted when below the neck and for Burgundy, Alsace, German and Cognac shaped bottles when greater than 4 centimetres (cm). Acceptable ullage levels increase with age; generally acceptable levels are as follows:

Under 15 years old – into neck or less than 4cm
15 to 30 years old – top shoulder (ts) or up to 5cm
Over 30 years old – high shoulder (hs) or up to 6cm

It should be noted that ullages may change between publication of the *Catalogue* and the *Sale* and that corks may fail as a result of transporting the wine. We will only accept responsibility for *Descriptions* of condition at the time of publication of the *Catalogue* and cannot accept responsibility for any loss resulting from failure of corks either before or after this point.

Options to buy parcels

A parcel is a number of *Lots* of identical size of the same wine, bottle size and *Description*. The *Buyer* of any of these *Lots* has the option to accept some or all of the remaining *Lots* in the parcel at the same price, although such options will be at the *Auctioneer's* sole discretion. Absentee *Bidders* are, therefore, advised to bid on the first *Lot* in a parcel.

Wines in Bond

Wines lying in Bond are marked Δ. All *Lots* sold under Bond, and which the *Buyer* wishes to remain under Bond, will be invoiced without VAT or Duty on the *Hammer Price*. If the *Buyer* wishes to take the *Lot* as Duty paid, UK Excise Duty and VAT will be added to the *Hammer Price* on the invoice.

Buyers must notify *Bonhams* at the time of the *sale* whether they wish to take their wines under Bond or Duty paid. If a *Lot* is taken under Bond, the *Buyer* will be responsible for all VAT, Duty, clearance and other charges that may be payable thereon.

Buyers outside the UK must be aware that any forwarding agent appointed to export their purchases must have a movement certificate for *Lots* to be released under Bond.

Bottling Details and Case Terms

The following terms used in the *Catalogue* have the following meanings:

CB – Château bottled
DB – Domaine bottled
EstB – Estate bottled
BB – Bordeaux bottled
BE – Belgian bottled
FB – French bottled
GB – German bottled
OB – Oporto bottled
UK – United Kingdom bottled
owc – original wooden case
iwc – individual wooden case
oc – original carton

SYMBOLS

THE FOLLOWING SYMBOLS ARE USED TO DENOTE

- Y Subject to CITES regulations when exporting these items outside the EU, see clause 13.
- TP Objects displayed with a TP will be located at the Cadogan Tate warehouse and will only be available for collection from this location.
- W Objects displayed with a w will be located in the Bonhams Warehouse and will only be available for collection from this location.
- Δ Wines lying in Bond.
- AR An *Additional Premium* will be payable to us by the *Buyer* to cover our *Expenses* relating to payment of royalties under the Artists Resale Right Regulations 2006. See clause 7 for details.
- The *Seller* has been guaranteed a minimum price for the *Lot*, either by *Bonhams* or a third party. This may take the form of an irrevocable bid by a third party, who may make a financial gain on a successful *Sale* or a financial loss if unsuccessful.
- ▲ *Bonhams* owns the *Lot* either wholly or partially or may otherwise have an economic interest.
- Ⓞ This lot contains or is made of ivory. The United States Government has banned the import of ivory into the USA.

•, †, *, G, Ω, α see clause 8, VAT, for details.

DATA PROTECTION – USE OF YOUR INFORMATION

Where we obtain any personal information about you, we shall only use it in accordance with the terms of our Privacy Policy (subject to any additional specific consent(s) you may have given at the time your information was disclosed). A copy of our Privacy Policy can be found on our Website www.bonhams.com or requested by post from Customer Services Department, 101 New Bond Street, London, W1S 1SR or by email from info@bonhams.com

APPENDIX 1

CONTRACT FOR SALE

IMPORTANT: These terms may be changed in advance of the *Sale* of the *Lot* to you, by the setting out of different terms in the *Catalogue* for the *Sale* and/or by placing an insert in the *Catalogue* and/or by notices at the *Sale* venue and/or by oral announcements before and during the *Sale* at the *Sale* venue. You should be alert to this possibility of changes and ask in advance of bidding if there have been any.

Under this contract the *Seller's* liability in respect of the quality of the *Lot*, it's fitness for any purpose and its conformity with any *Description* is limited. You are strongly advised to examine the *Lot* for yourself and/or obtain an independent examination of it before you buy it.

1 THE CONTRACT

- 1.1 These terms govern the *Contract for Sale* of the *Lot* by the *Seller* to the *Buyer*.
- 1.2 The Definitions and Glossary contained in Appendix 3 in the *Catalogue* are incorporated into this *Contract for Sale* and a separate copy can also be provided by *Bonhams* on request. Where words and phrases are used which are in the List of Definitions, they are printed in italics.
- 1.3 The *Seller* sells the *Lot* as the principal to the *Contract for Sale*, such contract being made between the *Seller* and you through *Bonhams* which acts in the sole capacity as the *Seller's* agent and not as an additional principal. However, if the *Catalogue* states that *Bonhams* sells the *Lot* as principal, or such a statement is made by an announcement by the *Auctioneer*, or by a notice at the *Sale*, or an insert in the *Catalogue*, then *Bonhams* is the *Seller* for the purposes of this agreement.

- 1.4 The contract is made on the fall of the *Auctioneer's* hammer in respect of the *Lot* when it is knocked down to you.

2 SELLER'S UNDERTAKINGS

- 2.1 The *Seller* undertakes to you that:
- 2.1.1 the *Seller* is the owner of the *Lot* or is duly authorised to sell the *Lot* by the owner;
- 2.1.2 save as disclosed in the *Entry* for the *Lot* in the *Catalogue*, the *Seller* sells the *Lot* with full title guarantee or, where the *Seller* is an executor, trustee, liquidator, receiver or administrator, with whatever right, title or interest he may have in the *Lot*;
- 2.1.3 except where the *Sale* is by an executor, trustee, liquidator, receiver or administrator the *Seller* is both legally entitled to sell the *Lot*, and legally capable of conferring on you quiet possession of the *Lot* and that the *Sale* conforms in every respect with the terms implied by the Sale of Goods Act 1979, Sections 12(1) and 12(2) (see the Definitions and Glossary);
- 2.1.4 the *Seller* has complied with all requirements, legal or otherwise, relating to any export or import of the *Lot*, and all duties and taxes in respect of the export or import of the *Lot* have (unless stated to the contrary in the *Catalogue* or announced by the *Auctioneer*) been paid and, so far as the *Seller* is aware, all third parties have complied with such requirements in the past;
- 2.1.5 subject to any alterations expressly identified as such made by announcement or notice at the *Sale* venue or by the *Notice to Bidders* or by an insert in the *Catalogue*, the *Lot* corresponds with the *Contractual Description* of the *Lot*, being that part of the *Entry* about the *Lot* in the *Catalogue* which is in bold letters and (except for colour) with any photograph of the *Lot* in the *Catalogue* and the contents of any *Condition Report* which has been provided to the *Buyer*.

3 DESCRIPTIONS OF THE LOT

- 3.1 Paragraph 2.1.5 sets out what is the *Contractual Description* of the *Lot*. In particular, the *Lot* is not sold as corresponding with that part of the *Entry* in the *Catalogue* which is not printed in bold letters, which merely sets out (on the *Seller's* behalf) *Bonhams'* opinion about the *Lot* and which is not part of the *Contractual Description* upon which the *Lot* is sold. Any statement or representation other than that part of the *Entry* referred to in paragraph 2.1.5 (together with any express alteration to it as referred to in paragraph 2.1.5), including any *Description* or *Estimate*, whether made orally or in writing, including in the *Catalogue* or on *Bonhams'* Website, or by conduct, or otherwise, and whether by or on behalf of the *Seller* or *Bonhams* and whether made prior to or during the *Sale*, is not part of the *Contractual Description* upon which the *Lot* is sold.
- 3.2 Except as provided in paragraph 2.1.5, the *Seller* does not make or give and does not agree to make or give any contractual promise, undertaking, obligation, guarantee, warranty, or representation of fact, or undertake any duty of care, in relation to any *Description* of the *Lot* or any *Estimate* in relation to it, nor of the accuracy or completeness of any *Description* or *Estimate* which may have been made by or on behalf of the *Seller* including by *Bonhams*. No such *Description* or *Estimate* is incorporated into this *Contract for Sale*.

4 FITNESS FOR PURPOSE AND SATISFACTORY QUALITY

- 4.1 The *Seller* does not make and does not agree to make any contractual promise, undertaking, obligation, guarantee, warranty, or representation of fact in relation to the satisfactory quality of the *Lot* or its fitness for any purpose.

- 4.2 The *Seller* will not be liable for any breach of any undertaking, whether implied by the Sale of Goods Act 1979 or otherwise, as to the satisfactory quality of the *Lot* or its fitness for any purpose.

5 RISK, PROPERTY AND TITLE

- 5.1 Risk in the *Lot* passes to you when it is knocked down to you on the fall of the *Auctioneer's* hammer in respect of the *Lot*. The *Seller* will not be responsible thereafter for the *Lot* prior to you collecting it from *Bonhams* or the *Storage Contractor*, with whom you have separate contract(s) as *Buyer*. You will indemnify the *Seller* and keep the *Seller* fully indemnified from and against all claims, proceedings, costs, expenses and losses arising in respect of any injury, loss and damage caused to the *Lot* after the fall of the *Auctioneer's* hammer until you obtain full title to it.
- 5.2 Title to the *Lot* remains in and is retained by the *Seller* until the *Purchase Price* and all other sums payable by you to *Bonhams* in relation to the *Lot* have been paid in full to, and received in cleared funds by, *Bonhams*.

6 PAYMENT

- 6.1 Your obligation to pay the *Purchase Price* arises when the *Lot* is knocked down to you on the fall of the *Auctioneer's* hammer in respect of the *Lot*.
- 6.2 Time will be of the essence in relation to payment of the *Purchase Price* and all other sums payable by you to *Bonhams*. Unless agreed in writing with you by *Bonhams* on the *Seller's* behalf (in which case you must comply with the terms of that agreement), all such sums must be paid to *Bonhams* by you in the currency in which the *Sale* was conducted by not later than 4.30pm on the second working day following the *Sale* and you must ensure that the funds are cleared by the seventh working day after the *Sale*. Payment must be made to *Bonhams* by one of the methods stated in the *Notice to Bidders* unless otherwise agreed with you in writing by *Bonhams*. If you do not pay any sums due in accordance with this paragraph, the *Seller* will have the rights set out in paragraph 8 below.

7 COLLECTION OF THE LOT

- 7.1 Unless otherwise agreed in writing with you by *Bonhams*, the *Lot* will be released to you or to your order only when *Bonhams* has received cleared funds to the amount of the full *Purchase Price* and all other sums owed by you to the *Seller* and to *Bonhams*.
- 7.2 The *Seller* is entitled to withhold possession from you of any other *Lot* he has sold to you at the same or at any other *Sale* and whether currently in *Bonhams'* possession or not until payment in full and in cleared funds of the *Purchase Price* and all other sums due to the *Seller* and/or *Bonhams* in respect of the *Lot*.
- 7.3 You will collect and remove the *Lot* at your own expense from *Bonhams'* custody and/ or control or from the *Storage Contractor's* custody in accordance with *Bonhams'* instructions or requirements.
- 7.4 You will be wholly responsible for packing, handling and transport of the *Lot* on collection and for complying with all import or export regulations in connection with the *Lot*.
- 7.5 You will be wholly responsible for any removal, storage or other charges or *Expenses* incurred by the *Seller* if you do not remove the *Lot* in accordance with this paragraph 7 and will indemnify the *Seller* against all charges, costs, including any legal costs and fees, *Expenses* and losses suffered by the *Seller* by reason of your failure to remove the *Lot* including any charges due under any *Storage Contract*. All such sums due to the *Seller* will be payable on demand.

8	FAILURE TO PAY FOR THE LOT	9	THE SELLER'S LIABILITY	10.3	If either party to the <i>Contract for Sale</i> is prevented from performing that party's respective obligations under the <i>Contract for Sale</i> by circumstances beyond its reasonable control or if performance of its obligations would by reason of such circumstances give rise to a significantly increased financial cost to it, that party will not, for so long as such circumstances prevail, be required to perform such obligations. This paragraph does not apply to the obligations imposed on you by paragraph 6.
8.1	If the <i>Purchase Price</i> for a <i>Lot</i> is not paid to <i>Bonhams</i> in full in accordance with the <i>Contract for Sale</i> the <i>Seller</i> will be entitled, with the prior written agreement of <i>Bonhams</i> but without further notice to you, to exercise one or more of the following rights (whether through <i>Bonhams</i> or otherwise):	9.1	The <i>Seller</i> will not be liable for any injury, loss or damage caused by the <i>Lot</i> after the fall of the <i>Auctioneer's</i> hammer in respect of the <i>Lot</i> .	10.4	Any notice or other communication to be given under the <i>Contract for Sale</i> must be in writing and may be delivered by hand or sent by first class post or air mail or fax transmission, if to the <i>Seller</i> , addressed c/o <i>Bonhams</i> at its address or fax number in the <i>Catalogue</i> (marked for the attention of the Company Secretary), and if to you to the address or fax number of the <i>Buyer</i> given in the <i>Bidding Form</i> (unless notice of any change of address is given in writing). It is the responsibility of the sender of the notice or communication to ensure that it is received in a legible form within any applicable time period.
8.1.1	to terminate immediately the <i>Contract for Sale</i> of the <i>Lot</i> for your breach of contract;	9.2	Subject to paragraph 9.3 below, except for breach of the express undertaking provided in paragraph 2.1.5, the <i>Seller</i> will not be liable for any breach of any term that the <i>Lot</i> will correspond with any <i>Description</i> applied to it by or on behalf of the <i>Seller</i> , whether implied by the Sale of Goods Act 1979 or otherwise.	10.5	If any term or any part of any term of the <i>Contract for Sale</i> is held to be unenforceable or invalid, such unenforceability or invalidity will not affect the enforceability and validity of the remaining terms or the remainder of the relevant term.
8.1.2	to resell the <i>Lot</i> by auction, private treaty or any other means on giving seven days' written notice to you of the intention to resell;	9.3	Unless the <i>Seller</i> sells the <i>Lot</i> in the course of a <i>Business</i> and the <i>Buyer</i> buys it as a <i>Consumer</i> ,	10.6	References in the <i>Contract for Sale</i> to <i>Bonhams</i> will, where appropriate, include reference to <i>Bonhams'</i> officers, employees and agents.
8.1.3	to retain possession of the <i>Lot</i> ;	9.3.1	the <i>Seller</i> will not be liable (whether in negligence, other tort, breach of contract or statutory duty or in restitution or under the Misrepresentation Act 1967, or in any other way) for any lack of conformity with, or inaccuracy, error, misdescription or omission in any <i>Description</i> of the <i>Lot</i> or any <i>Entry</i> or <i>Estimate</i> in relation to the <i>Lot</i> made by or on behalf of the <i>Seller</i> (whether made in writing, including in the <i>Catalogue</i> , or on the <i>Website</i> , or orally, or by conduct or otherwise) and whether made before or after this agreement or prior to or during the <i>Sale</i> ;	10.7	The headings used in the <i>Contract for Sale</i> are for convenience only and will not affect its interpretation.
8.1.4	to remove and store the <i>Lot</i> at your expense;	9.3.2	the <i>Seller</i> will not be liable for any loss of <i>Business</i> , <i>Business</i> profits or revenue or income or for loss of reputation or for disruption to <i>Business</i> or wasted time on the part of the <i>Buyer</i> or of the <i>Buyer's</i> management or staff or, for any indirect losses or consequential damages of any kind, irrespective in any case of the nature, volume or source of the loss or damage alleged to be suffered, and irrespective of whether the said loss or damage is caused by or claimed in respect of any negligence, other tort, breach of contract, statutory duty, restitutionary claim or otherwise;	10.8	In the <i>Contract for Sale</i> "including" means "including, without limitation".
8.1.5	to take legal proceedings against you for any sum due under the <i>Contract for Sale</i> and/or damages for breach of contract;	9.3.3	in any circumstances where the <i>Seller</i> is liable to you in respect of the <i>Lot</i> , or any act, omission, statement, or representation in respect of it, or this agreement or its performance, and whether in damages, for an indemnity or contribution or for a restitutionary remedy or in any way whatsoever, the <i>Seller's</i> liability will be limited to payment of a sum which will not exceed by way of maximum the amount of the <i>Purchase Price</i> of the <i>Lot</i> irrespective in any case of the nature, volume or source of any loss or damage alleged to be suffered or sum claimed as due, and irrespective of whether the liability arises from any negligence, other tort, breach of contract, statutory duty, bailee's duty, restitutionary claim or otherwise.	10.9	References to the singular will include reference to the plural (and vice versa) and reference to any one gender will include reference to the other genders.
8.1.6	to be paid interest on any monies due (after as well as before judgement or order) at the annual rate of 5% per annum above the base rate of National Westminster Bank Plc from time to time to be calculated on a daily basis from the date upon which such monies become payable until the date of actual payment;	9.4	Nothing set out in paragraphs 9.1 to 9.3 above will be construed as excluding or restricting (whether directly or indirectly) any person's liability or excluding or restricting any person's rights or remedies in respect of (i) fraud, or (ii) death or personal injury caused by the <i>Seller's</i> negligence (or any person under the <i>Seller's</i> control or for whom the <i>Seller</i> is legally responsible), or (iii) acts or omissions for which the <i>Seller</i> is liable under the Occupiers Liability Act 1957, or (iv) any other liability to the extent the same may not be excluded or restricted as a matter of law.	10.10	Reference to a numbered paragraph is to a paragraph of the <i>Contract for Sale</i> .
8.1.7	to repossess the <i>Lot</i> (or any part thereof) which has not become your property, and for this purpose (unless the <i>Buyer</i> buys the <i>Lot</i> as a <i>Consumer</i> from the <i>Seller</i> selling in the course of a <i>Business</i>) you hereby grant an irrevocable licence to the <i>Seller</i> by himself and to his servants or agents to enter upon all or any of your premises (with or without vehicles) during normal <i>Business</i> hours to take possession of the <i>Lot</i> or part thereof;			10.11	Save as expressly provided in paragraph 10.12 nothing in the <i>Contract for Sale</i> confers (or purports to confer) on any person who is not a party to the <i>Contract for Sale</i> any benefit conferred by, or the right to enforce any term of, the <i>Contract for Sale</i> .
8.1.8	to retain possession of any other property sold to you by the <i>Seller</i> at the <i>Sale</i> or any other auction or by private treaty until all sums due under the <i>Contract for Sale</i> shall have been paid in full in cleared funds;			10.12	Where the <i>Contract for Sale</i> confers an immunity from, and/or an exclusion or restriction of, the responsibility and/or liability of the <i>Seller</i> , it will also operate in favour and for the benefit of <i>Bonhams</i> , <i>Bonhams'</i> holding company and the subsidiaries of such holding company and the successors and assigns of <i>Bonhams</i> and of such companies and of any officer, employee and agent of <i>Bonhams</i> and such companies, each of whom will be entitled to rely on the relevant immunity and/or exclusion and/or restriction within and for the purposes of Contracts (Rights of Third Parties) Act 1999, which enables the benefit of a contract to be extended to a person who is not a party to the contract, and generally at law.
8.1.9	to retain possession of, and on seven days written notice to sell, <i>Without Reserve</i> , any of your other property in the possession of the <i>Seller</i> and/or of <i>Bonhams</i> (as bailee for the <i>Seller</i>) for any purpose (including, without limitation, other goods sold to you) and to apply any monies due to you as a result of such <i>Sale</i> in satisfaction or part satisfaction of any amounts owed to the <i>Seller</i> or to <i>Bonhams</i> ; and			11	GOVERNING LAW
8.1.10	so long as such goods remain in the possession of the <i>Seller</i> or <i>Bonhams</i> as its bailee, to rescind the contract for the <i>Sale</i> of any other goods sold to you by the <i>Seller</i> at the <i>Sale</i> or at any other auction or by private treaty and apply any monies received from you in respect of such goods in part or full satisfaction of any amounts owed to the <i>Seller</i> or to <i>Bonhams</i> by you.				All transactions to which the <i>Contract for Sale</i> applies and all connected matters will be governed by and construed in accordance with the laws of that part of the United Kingdom where the <i>Sale</i> takes place and the <i>Seller</i> and you each submit to the exclusive jurisdiction of the courts of that part of the United Kingdom, save that the <i>Seller</i> may bring proceedings against you in any other court of competent jurisdiction to the extent permitted by the laws of the relevant jurisdiction. <i>Bonhams</i> has a complaints procedure in place.
8.2	You agree to indemnify the <i>Seller</i> against all legal and other costs of enforcement, all losses and other <i>Expenses</i> and costs (including any monies payable to <i>Bonhams</i> in order to obtain the release of the <i>Lot</i>) incurred by the <i>Seller</i> (whether or not court proceedings will have been issued) as a result of <i>Bonhams</i> taking steps under this paragraph 8 on a full indemnity basis together with interest thereon (after as well as before judgement or order) at the rate specified in paragraph 8.1.6 from the date upon which the <i>Seller</i> becomes liable to pay the same until payment by you.	10	MISCELLANEOUS		
8.3	On any resale of the <i>Lot</i> under paragraph 8.1.2, the <i>Seller</i> will account to you in respect of any balance remaining from any monies received by him or on his behalf in respect of the <i>Lot</i> , after the payment of all sums due to the <i>Seller</i> and to <i>Bonhams</i> , within 28 days of receipt of such monies by him or on his behalf.	10.1	You may not assign either the benefit or burden of the <i>Contract for Sale</i> .		
		10.2	The <i>Seller's</i> failure or delay in enforcing or exercising any power or right under the <i>Contract for Sale</i> will not operate or be deemed to operate as a waiver of his rights under it except to the extent of any express waiver given to you in writing. Any such waiver will not affect the <i>Seller's</i> ability subsequently to enforce any right arising under the <i>Contract for Sale</i> .		

APPENDIX 2

BUYER'S AGREEMENT

IMPORTANT: These terms may be changed in advance of the *Sale* of the *Lot* to you, by the setting out of different terms in the *Catalogue* for the *Sale* and/or by placing an insert in the *Catalogue* and/or by notices at the *Sale* venue and/or by oral announcements before and during the *Sale* at the *Sale* venue. You should be alert to this possibility of changes and ask in advance of bidding if there have been any.

1 THE CONTRACT

- 1.1 These terms govern the contract between *Bonhams* personally and the *Buyer*, being the person to whom a *Lot* has been knocked down by the *Auctioneer*.
- 1.2 The Definitions and Glossary contained in Appendix 3 to the *Catalogue* for the *Sale* are incorporated into this agreement and a separate copy can also be provided by us on request. Where words and phrases which are defined in the List of Definitions are used in this agreement, they are printed in italics. Reference is made in this agreement to information printed in the *Notice to Bidders*, printed in the *Catalogue* for the *Sale*, and where such information is referred to it is incorporated into this agreement.
- 1.3 Except as specified in paragraph 4 of the *Notice to Bidders* the *Contract for Sale* of the *Lot* between you and the *Seller* is made on the fall of the *Auctioneer's* hammer in respect of the *Lot*, when it is knocked down to you. At that moment a separate contract is also made between you and *Bonhams* on the terms in this *Buyer's Agreement*.
- 1.4 We act as agents for the *Seller* and are not answerable or personally responsible to you for any breach of contract or other default by the *Seller*, unless *Bonhams* sells the *Lot* as principal.
- 1.5 Our personal obligations to you are governed by this agreement and we agree, subject to the terms below, to the following obligations:
- 1.5.1 we will, until the date and time specified in the *Notice to Bidders* or otherwise notified to you, store the *Lot* in accordance with paragraph 5;
- 1.5.2 subject to any power of the *Seller* or us to refuse to release the *Lot* to you, we will release the *Lot* to you in accordance with paragraph 4 once you have paid to us, in cleared funds, everything due to us and the *Seller*;
- 1.5.3 we will provide guarantees in the terms set out in paragraphs 9 and 10.
- 1.6 We do not make or give and do not agree to make or give any contractual promise, undertaking, obligation, *Guarantee*, warranty, representation of fact in relation to any *Description* of the *Lot* or any *Estimate* in relation to it, nor of the accuracy or completeness of any *Description* or *Estimate* which may have been made by us or on our behalf or by or on behalf of the *Seller* (whether made orally or in writing, including in the *Catalogue* or on *Bonhams' Website*, or by conduct, or otherwise), and whether made before or after this agreement or prior to or during the *Sale*. No such *Description* or *Estimate* is incorporated into this agreement between you and us. Any such *Description* or *Estimate*, if made by us or on our behalf, was (unless *Bonhams* itself sells the *Lot* as principal) made as agent on behalf of the *Seller*.

2 PERFORMANCE OF THE CONTRACT FOR SALE

You undertake to us personally that you will observe and comply with all your obligations and undertakings to the *Seller* under the *Contract for Sale* in respect of the *Lot*.

3 PAYMENT

- 3.1 Unless agreed in writing between you and us or as otherwise set out in the *Notice to Bidders*, you must pay to us by not later than 4.30pm on the second working day following the *Sale*:
- 3.1.1 the *Purchase Price* for the *Lot*;
- 3.1.2 a *Buyer's Premium* in accordance with the rates set out in the *Notice to Bidders* on each lot, and
- 3.1.3 if the *Lot* is marked [AP], an *Additional Premium* which is calculated and payable in accordance with the *Notice to Bidders* together with VAT on that sum if applicable so that all sums due to us are cleared funds by the seventh working day after the *Sale*.
- 3.2 You must also pay us on demand any *Expenses* payable pursuant to this agreement.
- 3.3 All payments to us must be made in the currency in which the *Sale* was conducted, using, unless otherwise agreed by us in writing, one of the methods of payment set out in the *Notice to Bidders*. Our invoices will only be addressed to the registered *Bidder* unless the *Bidder* is acting as an agent for a named principal and we have approved that arrangement, in which case we will address the invoice to the principal.
- 3.4 Unless otherwise stated in this agreement all sums payable to us will be subject to VAT at the appropriate rate and VAT will be payable by you on all such sums.
- 3.5 We may deduct and retain for our own benefit from the monies paid by you to us the *Buyer's Premium*, the *Commission* payable by the *Seller* in respect of the *Lot*, any *Expenses* and VAT and any interest earned and/or incurred until payment to the *Seller*.
- 3.6 Time will be of the essence in relation to any payment payable to us. If you do not pay the *Purchase Price*, or any other sum due to us in accordance with this paragraph 3, we will have the rights set out in paragraph 7 below.
- 3.7 Where a number of *Lots* have been knocked down to you, any monies we receive from you will be applied firstly pro-rata to pay the *Purchase Price* of each *Lot* and secondly pro-rata to pay all amounts due to *Bonhams*.

4 COLLECTION OF THE LOT

- 4.1 Subject to any power of the *Seller* or us to refuse to release the *Lot* to you, once you have paid to us, in cleared funds, everything due to the *Seller* and to us, we will release the *Lot* to you or as you may direct us in writing. The *Lot* will only be released on production of a buyer collection document, obtained from our cashier's office.
- 4.2 You must collect and remove the *Lot* at your own expense by the date and time specified in the *Notice to Bidders*, or if no date is specified, by 4.30pm on the seventh day after the *Sale*.
- 4.3 For the period referred to in paragraph 4.2, the *Lot* can be collected from the address referred to in the *Notice to Bidders* for collection on the days and times specified in the *Notice to Bidders*. Thereafter, the *Lot* may be removed elsewhere for storage and you must enquire from us as to when and where you can collect it, although this information will usually be set out in the *Notice to Bidders*.

- 4.4 If you have not collected the *Lot* by the date specified in the *Notice to Bidders*, you authorise us, acting as your agent and on your behalf, to enter into a contract (the "*Storage Contract*") with the *Storage Contractor* for the storage of the *Lot* on the then current standard terms and conditions agreed between *Bonhams* and the *Storage Contractor* (copies of which are available on request). If the *Lot* is stored at our premises storage fees at our current daily rates (currently a minimum of £3 plus VAT per *Lot* per day) will be payable from the expiry of the period referred to in paragraph 4.2. These storage fees form part of our *Expenses*.
- 4.5 Until you have paid the *Purchase Price* and any *Expenses* in full the *Lot* will either be held by us as agent on behalf of the *Seller* or held by the *Storage Contractor* as agent on behalf of the *Seller* and ourselves on the terms contained in the *Storage Contract*.
- 4.6 You undertake to comply with the terms of any *Storage Contract* and in particular to pay the charges (and all costs of moving the *Lot* into storage) due under any *Storage Contract*. You acknowledge and agree that you will not be able to collect the *Lot* from the *Storage Contractor's* premises until you have paid the *Purchase Price*, any *Expenses* and all charges due under the *Storage Contract*.
- 4.7 You will be wholly responsible for packing, handling and transport of the *Lot* on collection and for complying with all import or export regulations in connection with the *Lot*.
- 4.8 You will be wholly responsible for any removal, storage, or other charges for any *Lot* not removed in accordance with paragraph 4.2, payable at our current rates, and any *Expenses* we incur (including any charges due under the *Storage Contract*), all of which must be paid by you on demand and in any event before any collection of the *Lot* by you or on your behalf.

5 STORING THE LOT

We agree to store the *Lot* until the earlier of your removal of the *Lot* or until the time and date set out in the *Notice to Bidders*, on the Sale Information Page or at the back of the catalogue (or if no date is specified, by 4.30pm on the seventh day after the *Sale*) and, subject to paragraphs 6 and 10, to be responsible as *bailee* to you for damage to or the loss or destruction of the *Lot* (notwithstanding that it is not your property before payment of the *Purchase Price*). If you do not collect the *Lot* before the time and date set out in the *Notice to Bidders* (or if no date is specified, by 4.30pm on the seventh day after the *Sale*) we may remove the *Lot* to another location, the details of which will usually be set out in the relevant section of the *Catalogue*. If you have not paid for the *Lot* in accordance with paragraph 3, and the *Lot* is moved to any third party's premises, the *Lot* will be held by such third party strictly to *Bonhams'* order and we will retain our lien over the *Lot* until we have been paid in full in accordance with paragraph 3.

6 RESPONSIBILITY FOR THE LOT

- 6.1 Only on the payment of the *Purchase Price* to us will title in the *Lot* pass to you. However under the *Contract for Sale*, the risk in the *Lot* passed to you when it was knocked down to you.
- 6.2 You are advised to obtain insurance in respect of the *Lot* as soon as possible after the *Sale*.

7	FAILURE TO PAY OR TO REMOVE THE LOT AND PART PAYMENTS		
7.1	If all sums payable to us are not so paid in full at the time they are due and/or the <i>Lot</i> is not removed in accordance with this agreement, we will without further notice to you be entitled to exercise one or more of the following rights (without prejudice to any rights we may exercise on behalf of the <i>Seller</i>):	7.3	If you pay us only part of the sums due to us such payment shall be applied firstly to the <i>Purchase Price</i> of the <i>Lot</i> (or where you have purchased more than one <i>Lot</i> pro-rata towards the <i>Purchase Price</i> of each <i>Lot</i>) and secondly to the <i>Buyer's Premium</i> (or where you have purchased more than one <i>Lot</i> pro-rata to the <i>Buyer's Premium</i> on each <i>Lot</i>) and thirdly to any other sums due to us.
7.1.1	to terminate this agreement immediately for your breach of contract;	7.4	We will account to you in respect of any balance we hold remaining from any monies received by us in respect of any <i>Sale</i> of the <i>Lot</i> under our rights under this paragraph 7 after the payment of all sums due to us and/or the <i>Seller</i> within 28 days of receipt by us of all such sums paid to us.
7.1.2	to retain possession of the <i>Lot</i> ;		
7.1.3	to remove, and/or store the <i>Lot</i> at your expense;		
7.1.4	to take legal proceedings against you for payment of any sums payable to us by you (including the <i>Purchase Price</i>) and/or damages for breach of contract;	8	CLAIMS BY OTHER PERSONS IN RESPECT OF THE LOT
7.1.5	to be paid interest on any monies due to us (after as well as before judgement or order) at the annual rate of 5% per annum above the base lending rate of National Westminster Bank Plc from time to time to be calculated on a daily basis from the date upon which such monies become payable until the date of actual payment;	8.1	Whenever it becomes apparent to us that the <i>Lot</i> is the subject of a claim by someone other than you and other than the <i>Seller</i> (or that such a claim can reasonably be expected to be made), we may, at our absolute discretion, deal with the <i>Lot</i> in any manner which appears to us to recognise the legitimate interests of ourselves and the other parties involved and lawfully to protect our position and our legitimate interests. Without prejudice to the generality of the discretion and by way of example, we may:
7.1.6	to repossess the <i>Lot</i> (or any part thereof) which has not become your property, and for this purpose (unless you buy the <i>Lot</i> as a <i>Consumer</i>) you hereby grant an irrevocable licence to us, by ourselves, our servants or agents, to enter upon all or any of your premises (with or without vehicles) during normal business hours to take possession of any <i>Lot</i> or part thereof;	8.1.1	retain the <i>Lot</i> to investigate any question raised or reasonably expected by us to be raised in relation to the <i>Lot</i> ; and/or
7.1.7	to sell the <i>Lot Without Reserve</i> by auction, private treaty or any other means on giving you three months' written notice of our intention to do so;	8.1.2	deliver the <i>Lot</i> to a person other than you; and/or
7.1.8	to retain possession of any of your other property in our possession for any purpose (including, without limitation, other goods sold to you or with us for <i>Sale</i>) until all sums due to us have been paid in full;	8.1.3	commence interpleader proceedings or seek any other order of any court, mediator, arbitrator or government body; and/or
7.1.9	to apply any monies received from you for any purpose whether at the time of your default or at any time thereafter in payment or part payment of any sums due to us by you under this agreement;	8.1.4	require an indemnity and/or security from you in return for pursuing a course of action agreed to by you.
7.1.10	on three months' written notice to sell, <i>Without Reserve</i> , any of your other property in our possession or under our control for any purpose (including other goods sold to you or with us for <i>Sale</i>) and to apply any monies due to you as a result of such <i>Sale</i> in payment or part payment of any amounts owed to us;	8.2	The discretion referred to in paragraph 8.1:
7.1.11	refuse to allow you to register for a future <i>Sale</i> or to reject a bid from you at any future <i>Sale</i> or to require you to pay a deposit before any bid is accepted by us at any future <i>Sale</i> in which case we will be entitled to apply such deposit in payment or part payment, as the case may be, of the <i>Purchase Price</i> of any <i>Lot</i> of which you are the <i>Buyer</i> .	8.2.1	may be exercised at any time during which we have actual or constructive possession of the <i>Lot</i> , or at any time after such possession, where the cessation of such possession has occurred by reason of any decision, order or ruling of any court, mediator, arbitrator or government body; and
7.2	You agree to indemnify us against all legal and other costs, all losses and all other <i>Expenses</i> (whether or not court proceedings will have been issued) incurred by us as a result of our taking steps under this paragraph 7 on a full indemnity basis together with interest thereon (after as well as before judgement or order) at the rate specified in paragraph 7.1.5 from the date upon which we become liable to pay the same until payment by you.	8.2.2	will not be exercised unless we believe that there exists a serious prospect of a good arguable case in favour of the claim.
		9	FORGERIES
		9.1	We undertake a personal responsibility for any <i>Forgery</i> in accordance with the terms of this paragraph 9.
		9.2	Paragraph 9 applies only if:
		9.2.1	your name appears as the named person to whom the original invoice was made out by us in respect of the <i>Lot</i> and that invoice has been paid; and
		9.2.2	you notify us in writing as soon as reasonably practicable after you have become aware that the <i>Lot</i> is or may be a <i>Forgery</i> , and in any event within one year after the <i>Sale</i> , that the <i>Lot</i> is a <i>Forgery</i> ; and
		9.2.3	within one month after such notification has been given, you return the <i>Lot</i> to us in the same condition as it was at the time of the <i>Sale</i> , accompanied by written evidence that the <i>Lot</i> is a <i>Forgery</i> and details of the <i>Sale</i> and <i>Lot</i> number sufficient to identify the <i>Lot</i> .
		9.3	Paragraph 9 will not apply in respect of a <i>Forgery</i> if:
		9.3.1	the <i>Entry</i> in relation to the <i>Lot</i> contained in the <i>Catalogue</i> reflected the then accepted general opinion of scholars and experts or fairly indicated that there was a conflict of such opinion or reflected the then current opinion of an expert acknowledged to be a leading expert in the relevant field; or
		9.3.2	it can be established that the <i>Lot</i> is a <i>Forgery</i> only by means of a process not generally accepted for use until after the date on which the <i>Catalogue</i> was published or by means of a process which it was unreasonable in all the circumstances for us to have employed.
		9.4	You authorise us to carry out such processes and tests on the <i>Lot</i> as we in our absolute discretion consider necessary to satisfy ourselves that the <i>Lot</i> is or is not a <i>Forgery</i> .
		9.5	If we are satisfied that a <i>Lot</i> is a <i>Forgery</i> we will (as principal) purchase the <i>Lot</i> from you and you will transfer the title to the <i>Lot</i> in question to us, with full title guarantee, free from any liens, charges, encumbrances and adverse claims, in accordance with the provisions of Sections 12(1) and 12(2) of the Sale of Goods Act 1979 and we will pay to you an amount equal to the sum of the <i>Purchase Price</i> , <i>Buyer's Premium</i> , <i>VAT</i> and <i>Expenses</i> paid by you in respect of the <i>Lot</i> .
		9.6	The benefit of paragraph 9 is personal to, and incapable of assignment by, you.
		9.7	If you sell or otherwise dispose of your interest in the <i>Lot</i> , all rights and benefits under this paragraph will cease.
		9.8	Paragraph 9 does not apply to a <i>Lot</i> made up of or including a Chinese painting or Chinese paintings, a motor vehicle or motor vehicles, a <i>Stamp</i> or <i>Stamps</i> or a <i>Book</i> or <i>Books</i> .
		10	OUR LIABILITY
		10.1	We will not be liable whether in negligence, other tort, breach of contract or statutory duty or in restitution or under the Misrepresentation Act 1967 or in any other way for lack of conformity with or any inaccuracy, error, misdescription or omission in any <i>Description</i> of the <i>Lot</i> or any <i>Entry</i> or <i>Estimate</i> in respect of it, made by us or on our behalf or by or on behalf of the <i>Seller</i> (whether made in writing, including in the <i>Catalogue</i> , or on the <i>Bonhams' Website</i> , or orally, or by conduct or otherwise) and whether made before or after this agreement or prior to or during the <i>Sale</i> .
		10.2	Our duty to you while the <i>Lot</i> is at your risk and/or your property and in our custody and/or control is to exercise reasonable care in relation to it, but we will not be responsible for damage to the <i>Lot</i> or to other persons or things caused by:
		10.2.1	handling the <i>Lot</i> if it was affected at the time of <i>Sale</i> to you by woodworm and any damage is caused as a result of it being affected by woodworm; or
		10.2.2	changes in atmospheric pressure; nor will we be liable for:
		10.2.3	damage to tension stringed musical instruments; or
		10.2.4	damage to gilded picture frames, plaster picture frames or picture frame glass; and if the <i>Lot</i> is or becomes dangerous, we may dispose of it without notice to you in advance in any manner we think fit and we will be under no liability to you for doing so.

10.3.1	We will not be liable to you for any loss of <i>Business</i> , <i>Business</i> profits, revenue or income or for loss of <i>Business</i> reputation or for disruption to <i>Business</i> or wasted time on the part of the <i>Buyer's</i> management or staff or, if you are buying the <i>Lot</i> in the course of a <i>Business</i> , for any indirect losses or consequential damages of any kind, irrespective in any case of the nature, volume or source of the loss or damage alleged to be suffered, and irrespective of whether the said loss or damage is caused by or claimed in respect of any negligence, other tort, breach of contract, statutory duty, bailee's duty, a restitutionary claim or otherwise.	the <i>Entry</i> in the <i>Catalogue</i> in respect of the <i>Lot</i> reflected the then accepted general opinion of scholars and experts or fairly indicated that there was a conflict of such opinion; or	12.7	The headings used in this agreement are for convenience only and will not affect its interpretation.
10.3.2	Unless you buy the <i>Lot</i> as a <i>Consumer</i> , in any circumstances where we are liable to you in respect of a <i>Lot</i> , or any act, omission, statement, representation in respect of it, or this agreement or its performance, and whether in damages, for an indemnity or contribution or for a restitutionary remedy or in any way whatsoever, our liability will be limited to payment of a sum which will not exceed by way of maximum the amount of the <i>Purchase Price</i> of the <i>Lot</i> plus <i>Buyer's Premium</i> (less any sum you may be entitled to recover from the <i>Seller</i>) irrespective in any case of the nature, volume or source of any loss or damage alleged to be suffered or sum claimed as due, and irrespective of whether the liability arises from negligence, other tort, breach of contract, statutory duty, bailee's duty, a restitutionary claim or otherwise.	it can be established that the <i>Lot</i> is a non-conforming <i>Lot</i> only by means of a process not generally accepted for use until after the date on which the <i>Catalogue</i> was published or by means of a process which it was unreasonable in all the circumstances for us to have employed; or	12.8	In this agreement "including" means "including, without limitation".
	You may wish to protect yourself against loss by obtaining insurance.	the <i>Lot</i> comprises atlases, maps, autographs, manuscripts, extra illustrated books, music or periodical publications; or	12.9	References to the singular will include reference to the plural (and vice versa) and reference to any one gender will include reference to the other genders.
10.4	Nothing set out above will be construed as excluding or restricting (whether directly or indirectly) any person's liability or excluding or restricting any person's rights or remedies in respect of (i) fraud, or (ii) death or personal injury caused by our negligence (or any person under our control or for whom we are legally responsible), or (iii) acts or omissions for which we are liable under the Occupiers Liability Act 1957, or (iv) any other liability to the extent the same may not be excluded or restricted as a matter of law, or (v) under our undertaking in paragraph 9 of these conditions.	the <i>Lot</i> was listed in the <i>Catalogue</i> under "collections" or "collections and various" or the <i>Lot</i> was stated in the <i>Catalogue</i> to comprise or contain a collection, issue or <i>Books</i> which are undescribed or the missing text or illustrations are referred to or the relevant parts of the <i>Book</i> contain blanks, half titles or advertisements.	12.10	Reference to a numbered paragraph is to a paragraph of this agreement.
11	BOOKS MISSING TEXT OR ILLUSTRATIONS Where the <i>Lot</i> is made up wholly of a <i>Book</i> or <i>Books</i> and any <i>Book</i> does not contain text or illustrations (in either case referred to as a "non-conforming <i>Lot</i> "), we undertake a personal responsibility for such a non-conforming <i>Lot</i> in accordance with the terms of this paragraph, if: the original invoice was made out by us to you in respect of the <i>Lot</i> and that invoice has been paid; and you notify us in writing as soon as reasonably practicable after you have become aware that the <i>Lot</i> is or may be a non-conforming <i>Lot</i> , and in any event within 20 days after the <i>Sale</i> (or such longer period as we may agree in writing) that the <i>Lot</i> is a non-conforming <i>Lot</i> ; and within 20 days of the date of the relevant <i>Sale</i> (or such longer period as we may agree in writing) you return the <i>Lot</i> to us in the same condition as it was at the time of the <i>Sale</i> , accompanied by written evidence that the <i>Lot</i> is a non-conforming <i>Lot</i> and details of the <i>Sale</i> and <i>Lot</i> number sufficient to identify the <i>Lot</i> . but not if: the <i>Entry</i> in the <i>Catalogue</i> in respect of the <i>Lot</i> indicates that the rights given by this paragraph do not apply to it; or	If we are reasonably satisfied that a <i>Lot</i> is a non-conforming <i>Lot</i> , we will (as principal) purchase the <i>Lot</i> from you and you will transfer the title to the <i>Lot</i> in question to us, with full title guarantee, free from any liens, charges, encumbrances and adverse claims and we will pay to you an amount equal to the sum of the <i>Purchase Price</i> and <i>Buyer's Premium</i> paid by you in respect of the <i>Lot</i> . The benefit of paragraph 10 is personal to, and incapable of assignment by, you and if you sell or otherwise dispose of your interest in the <i>Lot</i> , all rights and benefits under this paragraph will cease.	12.11	Save as expressly provided in paragraph 12.12 nothing in this agreement confers (or purports to confer) on any person who is not a party to this agreement any benefit conferred by, or the right to enforce any term of, this agreement.
			12.12	Where this agreement confers an immunity from, and/or an exclusion or restriction of, the responsibility and/or liability of <i>Bonhams</i> , it will also operate in favour and for the benefit of <i>Bonhams'</i> holding company and the subsidiaries of such holding company and the successors and assigns of <i>Bonhams</i> and of such companies and of any officer, employee and agent of <i>Bonhams</i> and such companies, each of whom will be entitled to rely on the relevant immunity and/or exclusion and/or restriction within and for the purposes of Contracts (Rights of Third Parties) Act 1999, which enables the benefit of a contract to be extended to a person who is not a party to the contract, and generally at law.
		12 MISCELLANEOUS	13	GOVERNING LAW All transactions to which this agreement applies and all connected matters will be governed by and construed in accordance with the laws of that part of the United Kingdom where the <i>Sale</i> takes (or is to take) place and we and you each submit to the exclusive jurisdiction of the courts of that part of the United Kingdom, save that we may bring proceedings against you in any other court of competent jurisdiction to the extent permitted by the laws of the relevant jurisdiction. <i>Bonhams</i> has a complaints procedure in place.
		12.1 You may not assign either the benefit or burden of this agreement.		DATA PROTECTION – USE OF YOUR INFORMATION Where we obtain any personal information about you, we shall only use it in accordance with the terms of our Privacy Policy (subject to any additional specific consent(s) you may have given at the time your information was disclosed). A copy of our Privacy Policy can be found on our <i>Website</i> www.bonhams.com or requested by post from Customer Services Department, 101 New Bond Street, London W1S 1SR, United Kingdom or by email from info@bonhams.com.
		12.2 Our failure or delay in enforcing or exercising any power or right under this agreement will not operate or be deemed to operate as a waiver of our rights under it except to the extent of any express waiver given to you in writing. Any such waiver will not affect our ability subsequently to enforce any right arising under this agreement.		APPENDIX 3
		12.3 If either party to this agreement is prevented from performing that party's respective obligations under this agreement by circumstances beyond its reasonable control or if performance of its obligations would by reason of such circumstances give rise to a significantly increased financial cost to it, that party will not, for so long as such circumstances prevail, be required to perform such obligations. This paragraph does not apply to the obligations imposed on you by paragraph 3.		DEFINITIONS AND GLOSSARY Where these Definitions and Glossary are incorporated, the following words and phrases used have (unless the context otherwise requires) the meanings given to them below. The Glossary is to assist you to understand words and phrases which have a specific legal meaning with which you may not be familiar.
		12.4 Any notice or other communication to be given under this agreement must be in writing and may be delivered by hand or sent by first class post or air mail or fax transmission (if to <i>Bonhams</i> marked for the attention of the Company Secretary), to the address or fax number of the relevant party given in the <i>Contract Form</i> (unless notice of any change of address is given in writing). It is the responsibility of the sender of the notice or communication to ensure that it is received in a legible form within any applicable time period.		LIST OF DEFINITIONS "Additional Premium" a premium, calculated in accordance with the <i>Notice to Bidders</i> , to cover <i>Bonhams' Expenses</i> relating to the payment of royalties under the Artists Resale Right Regulations 2006 which is payable by the <i>Buyer</i> to <i>Bonhams</i> on any <i>Lot</i> marked [AR] which sells for a <i>Hammer Price</i> which together with the <i>Buyer's Premium</i> (but excluding any VAT) equals or exceeds 1000 euros (converted into the currency of the <i>Sale</i> using the European Central Bank Reference rate prevailing on the date of the <i>Sale</i>). "Auctioneer" the representative of <i>Bonhams</i> conducting the <i>Sale</i> .
		12.5 If any term or any part of any term of this agreement is held to be unenforceable or invalid, such unenforceability or invalidity will not affect the enforceability and validity of the remaining terms or the remainder of the relevant term.		
		12.6 References in this agreement to <i>Bonhams</i> will, where appropriate, include reference to <i>Bonhams'</i> officers, employees and agents.		

"Bidder" a person who has completed a *Bidding Form*.

"Bidding Form" our Bidding Registration Form, our Absentee Bidding Form or our Telephone Bidding Form.

"Bonhams" Bonhams 1793 Limited or its successors or assigns. *Bonhams* is also referred to in the *Buyer's Agreement*, the Conditions of Business and the *Notice to Bidders* by the words "we", "us" and "our".

"Book" a printed *Book* offered for *Sale* at a specialist *Book Sale*.

"Business" includes any trade, *Business* and profession.

"Buyer" the person to whom a *Lot* is knocked down by the *Auctioneer*. The *Buyer* is also referred to in the *Contract for Sale* and the *Buyer's Agreement* by the words "you" and "your".

"Buyer's Agreement" the contract entered into by *Bonhams* with the *Buyer* (see Appendix 2 in the *Catalogue*).

"Buyer's Premium" the sum calculated on the *Hammer Price* at the rates stated in the *Notice to Bidders*.

"Catalogue" the *Catalogue* relating to the relevant *Sale*, including any representation of the *Catalogue* published on our *Website*.

"Commission" the *Commission* payable by the *Seller* to *Bonhams* calculated at the rates stated in the *Contract Form*.

"Condition Report" a report on the physical condition of a *Lot* provided to a *Bidder* or potential *Bidder* by *Bonhams* on behalf of the *Seller*.

"Conditions of Sale" the *Notice to Bidders*, *Contract for Sale*, *Buyer's Agreement* and Definitions and Glossary.

"Consignment Fee" a fee payable to *Bonhams* by the *Seller* calculated at rates set out in the Conditions of Business.

"Consumer" a natural person who is acting for the relevant purpose outside his trade, *Business* or profession.

"Contract Form" the *Contract Form*, or vehicle *Entry* form, as applicable, signed by or on behalf of the *Seller* listing the *Lots* to be offered for *Sale* by *Bonhams*.

"Contract for Sale" the *Sale* contract entered into by the *Seller* with the *Buyer* (see Appendix 1 in the *Catalogue*).

"Contractual Description" the only *Description* of the *Lot* (being that part of the *Entry* about the *Lot* in the *Catalogue* which is in bold letters, any photograph (except for the colour) and the contents of any *Condition Report*) to which the *Seller* undertakes in the *Contract for Sale* the *Lot* corresponds.

"Description" any statement or representation in any way descriptive of the *Lot*, including any statement or representation relating to its authorship, attribution, condition, provenance, authenticity, style, period, age, suitability, quality, origin, value, estimated selling price (including the *Hammer Price*).

"Entry" a written statement in the *Catalogue* identifying the *Lot* and its *Lot* number which may contain a *Description* and illustration(s) relating to the *Lot*.

"Estimate" a statement of our opinion of the range within which the hammer is likely to fall.

"Expenses" charges and *Expenses* paid or payable by *Bonhams* in respect of the *Lot* including legal *Expenses*, banking charges and *Expenses* incurred as a result of an electronic transfer of money, charges and *Expenses* for loss and damage cover, insurance, *Catalogue* and other reproductions and illustrations, any customs duties, advertising, packing or shipping costs, reproductions rights' fees, taxes, levies, costs of testing, searches or enquiries, preparation of the *Lot* for *Sale*, storage charges, removal charges, removal charges or costs of collection from the *Seller* as the *Seller's* agents or from a defaulting *Buyer*, plus *VAT* if applicable.

"Forgery" an imitation intended by the maker or any other person to deceive as to authorship, attribution, origin, authenticity, style, date, age, period, provenance, culture, source or composition, which at the date of the *Sale* had a value materially less than it would have had if the *Lot* had not been such an imitation, and which is not stated to be such an imitation in any description of the *Lot*. A *Lot* will not be a *Forgery* by reason of any damage to, and/or restoration and/or modification work (including repainting or over painting) having been carried out on the *Lot*, where that damage, restoration or modification work (as the case may be) does not substantially affect the identity of the *Lot* as one conforming to the *Description* of the *Lot*.

"Guarantee" the obligation undertaken personally by *Bonhams* to the *Buyer* in respect of any *Forgery* and, in the case of specialist *Stamp Sales* and/or specialist *Book Sales*, a *Lot* made up of a *Stamp* or *Stamps* or a *Book* or *Books* as set out in the *Buyer's Agreement*.

"Hammer Price" the price in the currency in which the *Sale* is conducted at which a *Lot* is knocked down by the *Auctioneer*.

"Loss and Damage Warranty" means the warranty described in paragraph 8.2 of the Conditions of Business.

"Loss and Damage Warranty Fee" means the fee described in paragraph 8.2.3 of the Conditions of Business.

"Lot" any item consigned to *Bonhams* with a view to its *Sale* at auction or by private treaty (and reference to any *Lot* will include, unless the context otherwise requires, reference to individual items comprised in a group of two or more items offered for *Sale* as one *Lot*).

"Motoring Catalogue Fee" a fee payable by the *Seller* to *Bonhams* in consideration of the additional work undertaken by *Bonhams* in respect of the cataloguing of motor vehicles and in respect of the promotion of *Sales* of motor vehicles.

"New Bond Street" means *Bonhams'* saleroom at 101 New Bond Street, London W1S 1SR.

"Notional Charges" the amount of *Commission* and *VAT* which would have been payable if the *Lot* had been sold at the *Notional Price*.

"Notional Fee" the sum on which the *Consignment Fee* payable to *Bonhams* by the *Seller* is based and which is calculated according to the formula set out in the Conditions of Business.

"Notional Price" the latest in time of the average of the high and low *Estimates* given by us to you or stated in the *Catalogue* or, if no such *Estimates* have been given or stated, the *Reserve* applicable to the *Lot*.

"Notice to Bidders" the notice printed at the back or front of our *Catalogues*.

"Purchase Price" the aggregate of the *Hammer Price* and *VAT* on the *Hammer Price* (where applicable), the *Buyer's Premium* and *VAT* on the *Buyer's Premium* and any *Expenses*.

"Reserve" the minimum price at which a *Lot* may be sold (whether at auction or by private treaty).

"Sale" the auction *Sale* at which a *Lot* is to be offered for *Sale* by *Bonhams*.

"Sale Proceeds" the net amount due to the *Seller* from the *Sale* of a *Lot*, being the *Hammer Price* less the *Commission*, any *VAT* chargeable thereon, *Expenses* and any other amount due to us in whatever capacity and howsoever arising.

"Seller" the person who offers the *Lot* for *Sale* named on the *Contract Form*. Where the person so named identifies on the form another person as acting as his agent, or where the person named on the *Contract Form* acts as an agent for a principal (whether such agency is disclosed to *Bonhams* or not), "*Seller*" includes both the agent and the principal who shall be jointly and severally liable as such. The *Seller* is also referred to in the Conditions of Business by the words "you" and "your".

"Specialist Examination" a visual examination of a *Lot* by a specialist on the *Lot*.

"Stamp" means a postage *Stamp* offered for *Sale* at a Specialist *Stamp Sale*.

"Standard Examination" a visual examination of a *Lot* by a non-specialist member of *Bonhams'* staff.

"Storage Contract" means the contract described in paragraph 8.3.3 of the Conditions of Business or paragraph 4.4 of the *Buyer's Agreement* (as appropriate).

"Storage Contractor" means the company identified as such in the *Catalogue*.

"Terrorism" means any act or threatened act of terrorism, whether any person is acting alone or on behalf of or in connection with any organisation(s) and/or government(s), committed for political, religious or ideological or similar purposes including, but not limited to, the intention to influence any government and/or put the public or any section of the public into fear.

"Trust Account" the bank account of *Bonhams* into which all sums received in respect of the *Purchase Price* of any *Lot* will be paid, such account to be a distinct and separate account to *Bonhams'* normal business bank account.

"VAT" value added tax at the prevailing rate at the date of the *Sale* in the United Kingdom.

"Website" *Bonhams Website* at www.bonhams.com

"Withdrawal Notice" the *Seller's* written notice to *Bonhams* revoking *Bonhams'* instructions to sell a *Lot*.

"Without Reserve" where there is no minimum price at which a *Lot* may be sold (whether at auction or by private treaty).

GLOSSARY

The following expressions have specific legal meanings with which you may not be familiar. The following glossary is intended to give you an understanding of those expressions but is not intended to limit their legal meanings:

"artist's resale right": the right of the creator of a work of art to receive a payment on *Sales* of that work subsequent to the original *Sale* of that work by the creator of it as set out in the Artists Resale Right Regulations 2006.

"bailee": a person to whom goods are entrusted.

"indemnity": an obligation to put the person who has the benefit of the indemnity in the same position in which he would have been, had the circumstances giving rise to the indemnity not arisen and the expression "indemnity" is construed accordingly.

"interpleader proceedings": proceedings in the Courts to determine ownership or rights over a *Lot*.

"knocked down": when a *Lot* is sold to a *Bidder*, indicated by the fall of the hammer at the *Sale*.

"lien": a right for the person who has possession of the *Lot* to retain possession of it.

"risk": the possibility that a *Lot* may be lost, damaged, destroyed, stolen, or deteriorate in condition or value.

"title": the legal and equitable right to the ownership of a *Lot*.

"tort": a legal wrong done to someone to whom the wrong doer has a duty of care.

SALE OF GOODS ACT 1979

The following is an extract from the Sale of Goods Act 1979:

"Section 12 Implied terms about title, etc

- (1) In a contract of sale, other than one to which subsection (3) below applies, there is an implied term on the part of the seller that in the case of a sale he has a right to sell the goods, and in the case of an agreement to sell he will have such a right at the time when the property is to pass.
- (2) In a contract of sale, other than one to which subsection (3) below applies, there is also an implied term that-
 - (a) the goods are free, and will remain free until the time when the property is to pass, from any charge or encumbrance not disclosed or known to the buyer before the contract is made, and
 - (b) the buyer will enjoy quiet possession of the goods except in so far as it may be disturbed by the owner or other person entitled to the benefit of any charge or encumbrance so disclosed or known.
- (3) This subsection applies to a contract of sale in the case of which there appears from the contract or is to be inferred from its circumstances an intention that the seller should transfer only such title as he or a third person may have.
- (4) In a contract to which subsection (3) above applies there is an implied term that all charges or encumbrances known to the seller and not known to the buyer have been disclosed to the buyer before the contract is made.
- (5) In a contract to which subsection (3) above applies there is also an implied term that none of the following will disturb the buyer's quiet possession of the goods, namely:
 - (a) the seller;
 - (b) in a case where the parties to the contract intend that the seller should transfer only such title as a third person may have, that person;
 - (c) anyone claiming through or under the seller or that third person otherwise than under a charge or encumbrance disclosed or known to the buyer before the contract is made.
- (5A) As regards England and Wales and Northern Ireland, the term implied by subsection (1) above is a condition and the terms implied by subsections (2), (4) and (5) above are warranties."

Bonhams Specialist Departments

To e-mail any of the below use the first name dot second name @bonhams.com eg. charles.obrien@bonhams.com

19th Century Paintings

UK
Charles O' Brien
+44 20 7468 8360
U.S.A
Madalina Lazen
+1 212 644 9108

20th Century British Art

Matthew Bradbury
+44 20 7468 8295

Aboriginal Art

Francesca Cavazzini
+61 2 8412 2222

African, Oceanic & Pre-Columbian Art

U.S.A
Fredric Backlar
+1 323 436 5416

American Paintings

Liz Goodridge
+1 917 206 1621

Antiquities

Francesca Hickin
+44 20 7468 8226

Antique Arms & Armour

UK
David Williams
+44 20 7393 3807
U.S.A
Paul Carella
+1 415 503 3360

Art Collections, Estates & Valuations

Harvey Cammell
+44 (0) 20 7468 8340

Art Nouveau & Decorative Art & Design

UK
Mark Oliver
+44 20 7393 3856
U.S.A
Benjamin Walker
+1 212 710 1306
Dan Tolson
+1 917 206 1611

Australian Art

Merryn Schriever
+61 2 8412 2222
Alex Clark
+61 3 8640 4088

Australian Colonial Furniture and Australiana

+61 2 8412 2222

Books, Maps & Manuscripts

UK
Matthew Haley
+44 20 7393 3817
U.S.A
Catherine Williamson
+1 323 436 5442

British & European Glass

UK
John Sandon
+44 20 7468 8244
U.S.A.
Suzy Pai
+1 415 503 3343

British Ceramics

UK
John Sandon
+44 20 7468 8244

California & American Paintings

Scot Levitt
+1 323 436 5425

Carpets

UK
carpets@bonhams.com
U.S.A.
+1 415 503 3392

Chinese & Asian Art

UK
Asaph Hyman
+44 20 7468 5888
U.S.A
Dessa Goddard
+1 415 503 3333
HONG KONG
+852 3607 0010
AUSTRALIA
Yvett Klein
+61 2 8412 2222

Clocks

UK
James Stratton
+44 20 7468 8364
U.S.A
Jonathan Snellenburg
+1 212 461 6530

Coins & Medals

UK
John Millensted
+44 20 7393 3914
U.S.A
Paul Song
+1 323 436 5455

Contemporary Art

UK
Ralph Taylor
+44 20 7447 7403
U.S.A
Jeremy Goldsmith
+1 917 206 1656

Entertainment Memorabilia

UK
Katherine Schofield
+44 20 7393 3871
U.S.A
Catherine Williamson
+1 323 436 5442

European Ceramics

UK
Sebastian Kuhn
+44 20 7468 8384
U.S.A
+1 415 503 3326

Furniture

UK
Thomas Moore
+44 20 8963 2816
U.S.A
Andrew Jones
+1 415 503 3413

European Sculptures & Works of Art

UK
Michael Lake
+44 20 8963 6813

Greek Art

Anastasia Orfanidou
+44 20 7468 8356

Golf Sporting Memorabilia

Kevin Mcgimpsey
+44 131 240 2296

Irish Art

Penny Day
+44 20 7468 8366

Impressionist & Modern Art

UK
India Phillips
+44 20 7468 8328
U.S.A
Nathania Nisonson
+1 917 206 1617

Indian, Himalayan & Southeast Asian Art

H.K.
Edward Wilkinson
+85 22 918 4321
U.S.A
Mark Rasmussen
+1 917 206 1688

Islamic & Indian Art

Oliver White
+44 20 7468 8303

Japanese Art

UK
Suzannah Yip
+44 20 7468 8368
U.S.A
Jeff Olson
+1 212 461 6516

Jewellery

UK
Jean Ghika
+44 20 7468 8282
U.S.A
Caroline Morrissey
+1 212 644 9046
HONG KONG
Graeme Thompson
+852 3607 0006

Marine Art

UK
Veronique Scorer
+44 20 7393 3962

Mechanical Music

Jon Baddeley
+44 20 7393 3872

Modern, Contemporary & Latin American Art

U.S.A
Alexis Chompaisal
+1 323 436 5469

Modern & Contemporary Middle Eastern Art

Nima Sagharchi
+44 20 7468 8342

Modern & Contemporary South Asian Art

Tahmina Ghaffar
+44 207 468 8382

Modern Design

Gareth Williams
+44 20 7468 5879

Motor Cars

UK
Tim Schofield
+44 20 7468 5804
U.S.A
Mark Osborne
+1 415 503 3353
EUROPE
Philip Kantor
+32 476 879 471

Automobilia

UK
Toby Wilson
+44 8700 273 619
Adrian Piroos
+44 8700 273621

Motorcycles

Ben Walker
+44 8700 273616

Native American Art

Ingmars Lindbergs
+1 415 503 3393

Natural History

U.S.A
Claudia Florian
+1 323 436 5437

Old Master Pictures

UK
Andrew McKenzie
+44 20 7468 8261
U.S.A
Mark Fisher
+1 323 436 5488

Orientalist Art

Charles O'Brien
+44 20 7468 8360

Photography

U.S.A
Laura Paterson
+1 917 206 1653

Prints and Multiples

UK
Lucia Tro Santafe
+44 20 7468 8262
U.S.A
Morisa Rosenberg
+1 323 447 9374

Russian Art

UK
Daria Chernenko
+44 20 7468 8334
U.S.A
Yelena Harbick
+1 212 644 9136

Scientific Instruments

Jon Baddeley
+44 20 7393 3872
U.S.A.
Jonathan Snellenburg
+1 212 461 6530

Scottish Pictures

Chris Brickley
+44 131 240 2297

Silver & Gold Boxes

UK
Ellis Finch
+44 20 7393 3973
U.S.A
Aileen Ward
+1 323 436 5463

South African Art

Giles Peppiatt
+44 20 7468 8355

Sporting Guns

Patrick Hawes
+44 20 7393 3815

Travel Pictures

Veronique Scorer
+44 20 7393 3962

Urban Art

Gareth Williams
+44 20 7468 5879

Watches & Wristwatches

UK
Jonathan Darracott
+44 20 7447 7412
U.S.A.
Jonathan Snellenburg
+1 212 461 6530

Whisky

UK
Martin Green
+44 1292 520000
U.S.A
Erin McGrath
+1 415 503 3363
HONG KONG
Daniel Lam
+852 3607 0004

Wine

UK
Richard Harvey
+44 (0) 20 7468 5811
U.S.A
Kate Wollman
+1 415 503 3221
Erin McGrath
+1 415 503 3363
HONG KONG
Daniel Lam
+852 3607 0004

UNITED KINGDOM

London
101 New Bond Street ●
London W1S 1SR
+44 20 7447 7447
+44 20 7447 7400 fax

Montpelier Street ●
London SW7 1HH
+44 20 7393 3900
+44 20 7393 3905 fax

**South East
England**

Guildford
Millmead,
Guildford,
Surrey GU2 4BE
+44 1483 504 030
+44 1483 450 205 fax

Isle of Wight
+44 1273 220 000

Representative:
Brighton & Hove
Tim Squire-Sanders
+44 1273 220 000

West Sussex
+44 (0) 1273 220 000

**South West
England**

Bath
Queen Square House
Charlotte Street
Bath BA1 2LL
+44 1225 788 988
+44 1225 446 675 fax

Cornwall – Truro
36 Lemon Street
Truro
Cornwall
TR1 2NR
+44 1872 250 170
+44 1872 250 179 fax

Exeter
The Lodge
Southernhay West Exeter,
Devon
EX1 1JG
+44 1392 425 264
+44 1392 494 561 fax

Tetbury
Eight Bells House
14 Church Street
Tetbury
Gloucestershire
GL8 8JG
+44 1666 502 200
+44 1666 505 107 fax

Representatives:
Dorset
Bill Allan
+44 1935 815 271

**East Anglia and
Bury St. Edmunds**
Michael Steel
+44 1284 716 190

Norfolk
The Market Place
Reepham
Norfolk NR10 4JJ
+44 1603 871 443
+44 1603 872 973 fax

Midlands

Knowle
The Old House
Station Road
Knowle, Solihull
West Midlands
B93 0HT
+44 1564 776 151
+44 1564 778 069 fax

Oxford
Banbury Road
Shipton on Cherwell
Kidlington OX5 1JH
+44 1865 853 640
+44 1865 372 722 fax

**Yorkshire & North East
England**

Leeds
The West Wing
Bowcliffe Hall
Bramham
Leeds
LS23 6LP
+44 113 234 5755
+44 113 244 3910 fax

North West England

Chester
2 St Johns Court,
Vicars Lane,
Chester,
CH1 1QE
+44 1244 313 936
+44 1244 340 028 fax

Manchester
The Stables
213 Ashley Road
Hale WA15 9TB
+44 161 927 3822
+44 161 927 3824 fax

Channel Islands

Jersey
La Chasse
La Rue de la Vallee
St Mary
Jersey JE3 3DL
+44 1534 722 441
+44 1534 759 354 fax

Representative:
Guernsey
+44 1481 722 448

Scotland

Edinburgh ●
22 Queen Street
Edinburgh
EH2 1JX
+44 131 225 2266
+44 131 220 2547 fax

**Bonhams West
of Scotland**
Kirkhill House
Broom Road East
Newton Mearns
Glasgow
G77 5LL
+44 141 223 8866
+44 141 223 8868 fax

Representatives:
Wine & Spirits
Tom Gilbey
+44 1382 330 256

Wales

Representatives:
Cardiff
Jeff Muse
+44 2920 727 980

EUROPE

Belgium
Boulevard
Saint-Michel 101
1040 Brussels
+32 (0) 2 736 5076
belgium@bonhams.com

France
4 rue de la Paix
75002 Paris
+33 (0) 1 42 61 10 10
paris@bonhams.com

Germany - Cologne
Albertusstrasse 26
50667 Cologne
+49 (0) 221 2779 9650
cologne@bonhams.com

Germany - Munich
Maximilianstrasse 52
80538 Munich
+49 (0) 89 2420 5812
munich@bonhams.com

Greece
7 Neofytou Vamva Street
Athens 10674
+30 (0) 210 3636 404
athens@bonhams.com

Ireland
31 Molesworth Street
Dublin 2
+353 (0) 1 602 0990
ireland@bonhams.com

Italy - Milan
Via Boccaccio 22
20123 Milano
+39 0 2 4953 9020
milan@bonhams.com

Italy - Rome
Via Sicilia 50
00187 Roma
+39 0 6 48 5900
rome@bonhams.com

The Netherlands
De Lairesestraat 154
1075 HL Amsterdam
+31 (0) 20 67 09 701
amsterdam@bonhams.com

Portugal
Rua Bartolomeu Dias nº
160. 1º
Belem
1400-031 Lisbon
+351 218 293 291
portugal@bonhams.com

Spain - Barcelona
Teresa Ybarra
+34 930 156 686
barcelona@bonhams.com

Spain - Madrid
Nunez de Balboa no 4-1C
28001 Madrid
+34 915 78 17 27
madrid@bonhams.com

Sweden
Ingrid Bjäringer
+46 (0)709 79 90 07
sweden@bonhams.com

Switzerland - Geneva
Rue Etienne-Dumont 10
1204 Geneva
+41 (0) 22 300 3160
geneva@bonhams.com

Switzerland - Zurich
Andrea Bodmer
Dreikönigstrasse 31a
8002 Zürich
+41 44 281 9535
zurich@bonhams.com

MIDDLE EAST

Israel
Joslyne Halibard
+972 (0)54 553 5337
joslyne.halibard@
bonhams.com

NORTH AMERICA

USA

San Francisco ●
220 San Bruno Avenue
San Francisco
CA 94103
+1 (415) 861 7500
+1 (415) 861 8951 fax

Los Angeles ●
7601 W. Sunset Boulevard
Los Angeles
CA 90046
+1 (323) 850 7500
+1 (323) 850 6090 fax

New York ●
580 Madison Avenue
New York, NY
10022
+1 (212) 644 9001
+1 (212) 644 9007 fax

Representatives:
Arizona
Terri Adrian-Hardy
+1 (602) 859 1843
arizona@bonhams.com

**California
Central Valley**
David Daniel
+1 (916) 364 1645
sacramento@bonhams.com

**California
Palm Springs**
Brooke Sivo
+1 (760) 350 4255
palmsprings@bonhams.com

**California
San Diego**
Brooke Sivo
+1 (323) 436 5420
sandiego@bonhams.com

Florida
Jon King
Palm Beach
+1 (561) 651 7876
Miami
+1 (305) 228 6600
Ft. Lauderdale
+1 (954) 566 1630
florida@bonhams.com

Georgia
Mary Moore Bethea
+1 (470) 393 7322
georgia@bonhams.com

Illinois

Ricki Blumberg Harris
+1 (773) 267 3300
chicago@bonhams.com

Massachusetts
Amy Corcoran
+1 (617) 742 0909
boston@bonhams.com

Nevada
David Daniel
+1 (775) 831 0330
nevada@bonhams.com

New Jersey
Alan Fausel
+1 (973) 997 9954
newjersey@bonhams.com

Oregon
Sheryl Acheson
+1 (971) 727 7797
oregon@bonhams.com

Pennsylvania
Alan Fausel
+1 (610) 644 1199
pennsylvania@bonhams.com

Texas
Amy Lawch
+1 (713) 621 5988
texas@bonhams.com

Virginia
Gertraud Hechl
+1 (202) 422 2733
virginia@bonhams.com

Washington
Heather O'Mahony
+1 (206) 566 3913
seattle@bonhams.com

Washington DC
Gertraud Hechl
+1 (202) 422 2733
washingtonDC
@bonhams.com

CANADA

Toronto, Ontario ●
Jack Kerr-Wilson
340 King St East
2nd Floor, Office 213
Toronto ON
M5A 1K8
+1 (416) 462 9004
info.ca@bonhams.com

Montreal, Quebec
David Kelsey
+1 (514) 894 1138
info.ca@bonhams.com

SOUTH AMERICA

Brazil
+55 11 3031 4444
+55 11 3031 4444 fax

ASIA

Hong Kong ●
Suite 2001
One Pacific Place
88 Queensway
Admiralty
Hong Kong
+852 2918 4321
+852 2918 4320 fax
hongkong@bonhams.com

Beijing
Jessica Zhang
Suite 511
Chang An Club
10 East Chang An Avenue
Beijing 100006
+86(0) 10 6528 0922
+86(0) 10 6528 0933 fax
beijing@bonhams.com

Singapore
Bernadette Rankine
11th Floor, Wisma Atria
435 Orchard Road
Singapore 238877
+65 (0) 6701 8038
+65 (0) 6701 8001 fax
bernadette.rankine@
bonhams.com

Taiwan
Summer Fang
37th Floor, Taipei 101 Tower
Nor 7 Xinyi Road, Section 5
Taipei, 100
+886 2 8758 2898
+886 2 8758 2897 fax
summer.fang@
bonhams.com

AUSTRALIA

Sydney
97-99 Queen Street,
Woollahra, NSW 2025
Australia
+61 (0) 2 8412 2222
+61 (0) 2 9475 4110 fax
info.aus@bonhams.com

Melbourne
Como House
Como Avenue
South Yarra
Melbourne VIC 3141
Australia
+61 (0) 3 8640 4088
+61 (0) 2 9475 4110 fax
info.aus@bonhams.com

AFRICA

Nigeria
Neil Coventry
+234 (0)8110 033 792
+27 (0)7611 20171
neil.coventry@bonhams.com

**South Africa -
Johannesburg**
Penny Culverwell
+27 (0)71 342 2670
penny.culverwel@bonhams.com

Registration and Bidding Form

(Attendee / Absentee / Online / Telephone Bidding)

Please circle your bidding method above.

<input type="checkbox"/>	<input type="checkbox"/>	<input type="checkbox"/>	<input type="checkbox"/>
--------------------------	--------------------------	--------------------------	--------------------------

Paddle number (for office use only)

This sale will be conducted in accordance with Bonhams' Conditions of Sale and bidding and buying at the Sale will be regulated by these Conditions. You should read the Conditions in conjunction with the Sale Information relating to this Sale which sets out the charges payable by you on the purchases you make and other terms relating to bidding and buying at the Sale. You should ask any questions you have about the Conditions before signing this form. These Conditions also contain certain undertakings by bidders and buyers and limit Bonhams' liability to bidders and buyers.

Data protection – use of your information

Where we obtain any personal information about you, we shall only use it in accordance with the terms of our Privacy Policy (subject to any additional specific consent(s) you may have given at the time your information was disclosed). A copy of our Privacy Policy can be found on our website (www.bonhams.com) or requested by post from Customer Services Department, 101 New Bond Street, London W1S 1SR United Kingdom or by e-mail from info@bonhams.com.

Notice to Bidders.

Clients are requested to provide photographic proof of ID - passport, driving licence, ID card, together with proof of address - utility bill, bank or credit card statement etc. Corporate clients should also provide a copy of their articles of association / company registration documents, together with a letter authorising the individual to bid on the company's behalf. Failure to provide this may result in your bids not being processed. For higher value lots you may also be asked to provide a bank reference.

If successful

I will collect the purchases myself ☐

Please contact me with a shipping quote (if applicable) ☐

Sale title: Jewellery		Sale date: 14 March 2018													
Sale no. 24567		Sale venue: Knightsbridge													
<p>If you are not attending the sale in person, please provide details of the Lots on which you wish to bid at least 24 hours prior to the sale. Bids will be rounded down to the nearest increment. Please refer to the Notice to Bidders in the catalogue for further information relating to Bonhams executing telephone, online or absentee bids on your behalf. Bonhams will endeavour to execute these bids on your behalf but will not be liable for any errors or failing to execute bids.</p> <p>General Bid Increments:</p> <table><tr><td>£10 - 200by 10s</td><td>£10,000 - 20,000by 1,000s</td></tr><tr><td>£200 - 500by 20 / 50 / 80s</td><td>£20,000 - 50,000by 2,000 / 5,000 / 8,000s</td></tr><tr><td>£500 - 1,000by 50s</td><td>£50,000 - 100,000by 5,000s</td></tr><tr><td>£1,000 - 2,000by 100s</td><td>£100,000 - 200,000by 10,000s</td></tr><tr><td>£2,000 - 5,000by 200 / 500 / 800s</td><td>above £200,000at the auctioneer's discretion</td></tr><tr><td>£5,000 - 10,000by 500s</td><td></td></tr></table> <p>The auctioneer has discretion to split any bid at any time.</p>				£10 - 200by 10s	£10,000 - 20,000by 1,000s	£200 - 500by 20 / 50 / 80s	£20,000 - 50,000by 2,000 / 5,000 / 8,000s	£500 - 1,000by 50s	£50,000 - 100,000by 5,000s	£1,000 - 2,000by 100s	£100,000 - 200,000by 10,000s	£2,000 - 5,000by 200 / 500 / 800s	above £200,000at the auctioneer's discretion	£5,000 - 10,000by 500s	
£10 - 200by 10s	£10,000 - 20,000by 1,000s														
£200 - 500by 20 / 50 / 80s	£20,000 - 50,000by 2,000 / 5,000 / 8,000s														
£500 - 1,000by 50s	£50,000 - 100,000by 5,000s														
£1,000 - 2,000by 100s	£100,000 - 200,000by 10,000s														
£2,000 - 5,000by 200 / 500 / 800s	above £200,000at the auctioneer's discretion														
£5,000 - 10,000by 500s															
Customer Number		Title													
First Name		Last Name													
Company name (to be invoiced if applicable)															
Address															
City		County / State													
Post / Zip code		Country													
Telephone mobile		Telephone daytime													
Telephone evening		Fax													
Preferred number(s) in order for Telephone Bidding (inc. country code)															
E-mail (in capitals)															
By providing your email address above, you authorise Bonhams to send to this address information relating to Sales, marketing material and news concerning Bonhams. Bonhams does not sell or trade email addresses.															
I am registering to bid as a private buyer <input type="checkbox"/>		I am registering to bid as a trade buyer <input type="checkbox"/>													
If registered for VAT in the EU please enter your registration here: □□ / □□□ - □□□□ - □□		Please tick if you have registered with us before <input type="checkbox"/>													

Please note that all telephone calls are recorded.

Telephone or Absentee (T / A)	Lot no.	Brief description	MAX bid in GBP (excluding premium & VAT)	Covering bid ★

FOR WINE SALES ONLY	
Please leave lots "available under bond" in bond <input type="checkbox"/>	Please include delivery charges (minimum charge of £20 + VAT) <input type="checkbox"/>

BY SIGNING THIS FORM YOU AGREE THAT YOU HAVE SEEN THE CATALOGUE AND HAVE READ AND UNDERSTOOD OUR CONDITIONS OF SALE AND WISH TO BE BOUND BY THEM, AND AGREE TO PAY THE BUYER'S PREMIUM, VAT AND ANY OTHER CHARGES MENTIONED IN THE NOTICE TO BIDDERS. THIS AFFECTS YOUR LEGAL RIGHTS.

Your signature:

Date:

★ Covering Bid: A maximum bid (exclusive of Buyers Premium and VAT) to be executed by Bonhams only if we are unable to contact you by telephone, or should the connection be lost during bidding.

NB. Payment will only be accepted from an account in the same name as shown on the invoice and Auction Registration form.

Please email or fax the completed Auction Registration form and requested information to:

Bonhams, Customer Services, 101 New Bond Street, London, W1S 1SR. Tel: +44 (0) 20 7447 7447 Fax: +44 (0) 20 7447 7401, bids@bonhams.com

Bonhams 1793 Limited. Montpelier Street, London SW7 1HH. Incorporated in England. Company Number 4326560.

UK/01/18

Bonhams



Bonhams

Montpelier Street
Knightsbridge
London
SW7 1HH

+44 (0) 20 7393 3900
+44 (0) 20 7393 3905 fax

