

# NATURAL HISTORY

Tuesday December 5, 2017

Los Angeles



# Bonhams



# NATURAL HISTORY

Tuesday December 5, 2017 at 10am  
Los Angeles

## BONHAMS

7601 W. Sunset Boulevard  
Los Angeles, California 90046  
[bonhams.com](http://bonhams.com)

## PREVIEW

Friday, December 1 12pm - 5pm  
Saturday, December 2 12pm - 5pm  
Sunday, December 3 12pm - 5pm  
Monday December 4 10am - 5pm

## SALE NUMBER: 24889

Lots 1001 - 1156

## CATALOG: \$35

## BIDS

+1 (323) 850 7500  
+1 (323) 850 6090 fax

To bid via the internet please visit  
[www.bonhams.com/24889](http://www.bonhams.com/24889)

Please note that telephone bids must be submitted no later than 4pm on the day prior to the auction. New bidders must also provide proof of identity and address when submitting bids. Telephone bidding is only available for lots with a low estimate in excess of \$1000.

Please contact client services with any bidding inquiries.

Please see pages 68 to 71 for bidder information including Conditions of Sale, after-sale collection and shipment.

## INQUIRIES

Tom Lindgren,  
Consultant Specialist  
Consulting Director  
+1 (310) 469 8567  
+1 (323) 436 5437  
[tom.lindgren@bonhams.com](mailto:tom.lindgren@bonhams.com)

Katherine Miller  
Business Manager  
+1 (323) 436 5445  
[katherine.miller@bonhams.com](mailto:katherine.miller@bonhams.com)

## ILLUSTRATIONS

Front cover: Lot 1062  
Inside front cover: Lot 1033  
Session page: Lot 1029  
Inside back cover: Lot 1093  
Back cover: Lot 1047

# ORDER OF SALE

Property from the Estate of

Lord Anthony Jacobs.....	1001-1033
Amber.....	1034-1042
Ammonites.....	1043-1049
Dinosauria.....	1051-1062
Invertebrates.....	1063-1068
Mammals.....	1069-1076
Fish and birds.....	1077-1102
Reptiles.....	1104-1119
Meteorites.....	1121-1144
Curiosities.....	1145-1156

## ADDITIONAL IMAGES FOR ALL GROUP LOTS ARE AVAILABLE ON THE WEBSITE

ERA	PERIOD	EPOCH	MILLION YEARS AGO
CENOZOIC	QUATERNARY	Holocene (Recent)	Present to 0.01
		Pleistocene (Ice Age)	0.01 to 2
	TERTIARY	Pliocene	2 to 5
		Miocene	5 to 25
		Oligocene	25 to 38
		Eocene	38 to 55
		Paleocene	55 to 65
MESOZOIC (Age of the Dinosaur)	CRETACEOUS		65 to 144
	JURASSIC		144 to 213
	TRIASSIC		213 to 248
PALEOZOIC	PERMIAN		248 to 286
	CARBONIFEROUS		286 to 360
	DEVONIAN		360 to 408
	SILURIAN		408 to 438
	ORDOVICIAN		438 to 505
	CAMBRIAN		505 to 590

# REGULATED SPECIES MATERIALS AND CITES PERMITS

The export of a lot from the United States or import into certain countries may be subject to export or import regulations, licensure and/or other restrictions; in particular, lots containing plant or animal materials such as ivory, rhinoceros horn, tortoiseshell, coral, whalebone or certain types of woods, irrespective of age or value, may require the granting of one or more export or import licenses or certificates, or may be banned from import altogether by some countries. Moreover, the ability to obtain an export license or certificate does not insure the ability to obtain an import license or certificate in another country. Lots that contain such regulated species materials may also not be eligible for exportation or for re-importation into the United States if they are not at least 100 years of age, and, under current law, lots containing African Elephant Ivory may no longer be re-imported into the United States regardless of age. In addition, resales of lots containing certain regulated species materials may be subject to restrictions in some jurisdictions.

Lots noted in the catalog with a **Y** next to the lot number contain one or more such regulated plant or animal materials. **It is the buyer's responsibility to investigate any such restrictions and to obtain any relevant export or import licenses. Please note that this process is governed by local authorities and may take considerable time. Regardless of any delay in the obtaining of an export or import license or certificate or denial of a license's or certificate's issuance, purchased lots shall be paid for in accordance with the Conditions of Sale, and any such delay or denial shall not serve as the basis for cancellation of any sale.** Prospective buyers are advised to obtain information from the relevant regulatory authorities regarding export and import restrictions, requirements, and costs prior to bidding.

Prospective buyers should also check with their local (e.g. state) regulatory authorities regarding any local restrictions and/or permit requirements that may apply with respect to purchases of regulated species materials, including without limitation purchases of items containing elephant ivory or rhino horn. For example, we are advised that New York buyers of any lot containing elephant or mammoth ivory or rhino horn will be responsible for obtaining a New York State permit before taking possession of the lot within New York State, and that the State of New Jersey has banned the import of items containing elephant or marine mammal ivory or rhino horn into that state.

Upon request, Bonhams can refer the purchaser to a third party agent to assist the purchaser in attempting to obtain the appropriate licenses and/or certificates. However, there is no assurance that any necessary licenses or certificates can be obtained. Please contact the Specialist Department for a suggested list of shipping agents prior to placing a bid if you are uncertain as to whether a lot is subject to export/import license or certificate requirements or related restrictions.

# PROPERTY OF THE ESTATE OF LORD ANTHONY JACOBS

Lots 1001-1033



## Lord David Anthony Jacobs

Lord David Anthony Jacobs was a successful British financier, politician and philanthropist. He acquired business interests in numerous companies during his long career as well as serving publicly as an independent politician, acting as Joint Treasurer of the Liberal party from 1984 to 1987. He was knighted in 1988 and made a life peer in 1997 in recognition of his political service.

Lord Jacobs invested in a wide variety of business enterprises, ranging from fast food to fashion. He campaigned for political reform as an active member of housing and economic committees, and supported arts and educational causes. His varied interests and eclectic tastes were reflected in his collecting, which spanned a breadth of categories, including important artworks, furnishings and natural history treasures.

The following lots comprise distinctive fossil, mineral and wood specimens, and mineral carvings, from the estate of Lord Anthony Jacobs.



1001



1002

**PROPERTY FROM THE COLLECTION OF  
LORD ANTHONY JACOBS**

1001

**FOUR MAMMOTH TOOTH SLICES**

*Mammuthus primigenius*

*Pleistocene*

Four mammoth tooth specimens exhibit beautiful tonal texture within the teeth. The cut surface is polished on each specimen. *Specimens measuring approximately 5 x 3 1/2 in*

**\$500 - 600**

**To be sold without reserve**

1002

**DOUBLE ECHNOID SPECIMEN**

*Interderminate species*

Sea urchins are *echinoids* and are members of the Echinoderm family. The first fossil echnoids date back to the Late *Ordovician*. The present example is a matrix specimen displaying two extremely large *echinoids*. *Measuring 11 x 6 in*

**\$300 - 400**

**To be sold without reserve**

1003<sup>w</sup>

**AESTHETIC DRIFT WOOD**

A piece of driftwood with twists and flowing lines mounted to create a decorative sculptural focal point. *Measuring 38 x 10 x 7 in*

**\$200 - 300**

**To be sold without reserve**

1004<sup>w</sup>

**DRIFTWOOD ON BASE**

A specimen of driftwood evokes a sculptural work of art, displaying flowing natural shape and wood texture smoothed by ocean water. Offered on a custom wooden stand. *Height measuring 72 in*

**\$1,800 - 2,500**

**To be sold without reserve**



1003



1004



1005<sup>w</sup>

**HARDWOOD IN RESIN**

A specimen of hardwood has been embedded in resin to create a decorative stand. Visually captivating. *Measuring 22 x 12 x 11 1/2in*

**\$2,000 - 2,500**

**To be sold without reserve**

1006

**ORANGE CRYSTAL SPECIMEN**

*Mexico*

A decorative natural specimen of orange calcite exhibiting deep shades of orange. *Measuring 10 x 8 x 6in*

**\$300 - 400**

**To be sold without reserve**

1007

**COLLECTION OF AGATE SLICES**

*Brazil*

A delightful collection of agates cut as slabs, each with brilliant hues of brown, gold, gray, and carnelian, displaying a multitude of patterns. (4) *Measuring approximately 7 x 7in each*

**\$600 - 800**

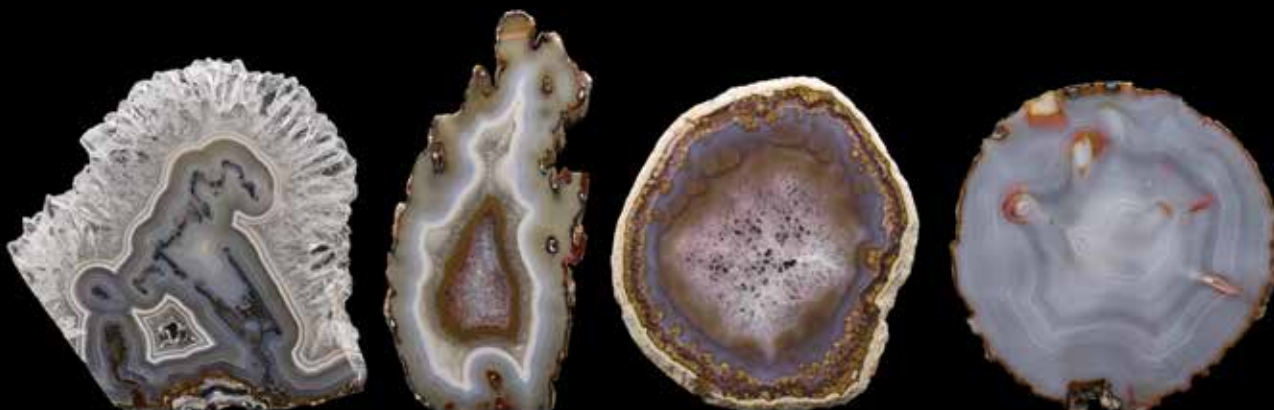
**To be sold without reserve**



1005



1006



1007



1008



1009

1008

#### **COLLECTION OF FIVE MINERAL SPHERES**

*Worldwide*

Attractive colors and tonal variations are seen in this lovely group, which includes three jasper spheres and two Russian simbirite spheres. *Spheres measuring 2 to 3in (5)*

**\$1,000 - 1,500**

**To be sold without reserve**

1009

#### **COLLECTION OF FIVE SMALL SPHERES**

*World localities*

Arresting colors and tonal variations are seen in a collection of five mineral spheres including simbirite, jasper and agate. *Specimens measuring 4 1/2 to 3 1/2in (5)*

**\$1,000 - 1,500**

**To be sold without reserve**

1010

#### **COLLECTION OF FOUR MINERAL SPHERES**

*World localities*

A collection of four mineral spheres illustrates an interesting variety of natural mineral colors including: a ruby-in-fuschite sphere, *India*, two orbicular jasper spheres, *Madagascar*; and a malachite sphere, *Democratic Republic of Congo*. *Specimens measuring 5 to 6in (4)*

**\$1,000 - 1,500**

**To be sold without reserve**

1011<sup>w</sup>

#### **GROUP OF THREE LARGE SPHERES**

*Madagascar, Russia*

A group of three large mineral spheres displaying varying colors and tonal variation including: a simbirite sphere, *Russia*; and two orbicular jasper spheres, *Madagascar*. *Specimens measuring 7 to 8in (3)*

**\$1,000 - 1,500**

**To be sold without reserve**

1012<sup>w</sup>

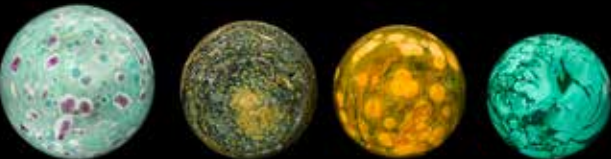
#### **TWO SPHERES**

*Madagascar*

A very large ocean jasper sphere displaying brilliant colors, *diameter 8in*; together with a petrified wood sphere, *diameter 9 in.(2)*

**\$1,200 - 1,500**

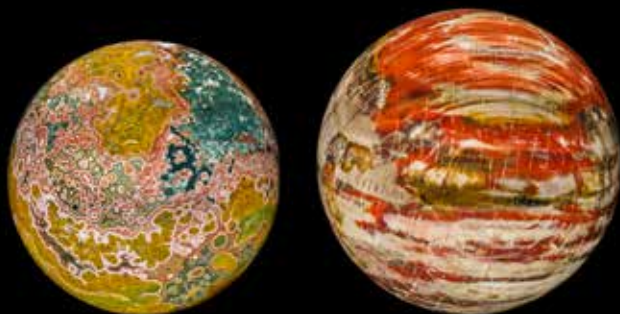
**To be sold without reserve**



1010



1011

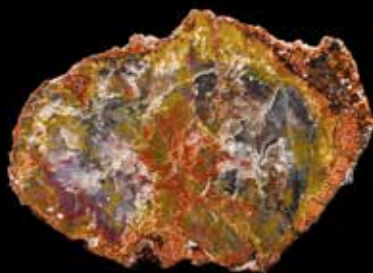


1012





1013



1014



1015

1013<sup>w</sup>

### **YELLOW JASPER SPHERE**

*Madagascar*

Gorgeous yellow-gold coloration, interesting tonal variation and a vein of quartz distinguish this sphere formed of yellow jasper. *Diameter measuring 11in*

**\$2,000 - 2,500**

**To be sold without reserve**

1014<sup>w</sup>

### **PETRIFIED WOOD SLAB**

*Auracarioxylon arizonicum*

*Triassic*

*Chinle Formation, Arizona*

A variety of handsome colors are seen in a petrified wood slab, including warm reds, grays, ivories, yellows and watery bluish-purple tones. A beautiful and decorative piece. *Measuring 15 x 10in*

**\$1,000 - 1,200**

**To be sold without reserve**

1015<sup>w</sup>

### **PETRIFIED WOOD**

*Auracarioxylon arizonicum*

*Triassic*

*Chinle Formation, Arizona*

A beautiful and decorative petrified wood slab exhibits a profusion of colors, including warm reds, grays, ivory, yellows and watery bluish-purple tones. *Measuring 26 x 16in*

**\$1,500 - 2,000**

**To be sold without reserve**

1016<sup>w</sup>

### **DECORATIVE STALACTITE**

*China*

A beautiful Chinese stalactite. Offered on a custom base. *Height measuring 55in*

**\$3,500 - 4,500**



1016



1017



1019



1020



1021



1018

1017

#### **COLLECTION OF FOUR AMMONITE SPECIMENS**

*Scaphites. Aegasteroceras*

*United Kingdom, Russia, South Dakota*

A collection of three small ammonites and a nautiloid. *Measurements vary from 3 to 7in*

**\$500 - 600**

**To be sold without reserve**

1018

#### **BLACK AND WHITE AMMONITE**

*Goniatite*

*Devonian*

*Atlas Mountains, Morocco*

Related to the modern chambered nautilus, this 390-million-year-old black and white *Goniatite* ammonite originated in the Atlas Mountains of Morocco. Natural mineral replacement over millions of years has produced an attractive black and white coloration which emphasizes the swirling growth sutures of the once-living animal. *Measuring 10 x 8 1/2in*

**\$1,000 - 1,500**

**To be sold without reserve**

1019

#### **DECORATIVE AMMONITE**

*Cleoniceras sp*

*Middle Cretaceous, Albian Stage*

*Tulear, Madagascar*

An ammonite displaying soft pastel opalescence. *Measuring 7 x 6in*

**\$1,000 - 1,500**

**To be sold without reserve**

1020

**OPALESCENT AMMONITE**

*Speetoniceras versicolor*

*Hauterivian*

*Shilovka, Volga, Russia*

This robust ammonite exhibits deep ribbing and original mother-of-pearl brilliance. These ammonites, when cut in two, are often filled with pyrite and yellow calcite. Mounted on matrix from the locality of origin.

*Measuring 7 x 7in*

**\$1,000 - 1,500**

**To be sold without reserve**

1021<sup>w</sup>

**AMMONITE**

*Quenstedtoceras*

*Jurassic*

*Volga River, Ulianovsk region, Russia*

Fine preservation in ridge structure and soft pastel coloration are seen in this ammonite. Mounted on stone matrix. *Measuring 10 x 8 x 7in*

**\$1,200 - 1,500**

**To be sold without reserve**

1022<sup>w</sup>

**OPALESCENT AMMONITE FROM RUSSIA**

*Jurassic*

*Volga River, Ulianovsk Region, Russia*

Offered is a gracefully *uncoiled* heteromorphic ammonite. It has been carefully prepared, featuring lovely mother-of-pearl iridescence with soft-hued undertones. This is a beautiful and naturally aesthetic specimen, perfect for display. Mounted on matrix from the locality.

*Measuring 19 æ x 14in*

**\$3,000 - 4,000**

1023<sup>w</sup>

**LARGE SINGLE AMMONITE**

*Craspedodiscus*

*Jurassic*

*Volga River, Ulianovsk region, Russia*

This very large Russian ammonite displays some red opalescence as well as earth tones with suture patterns visible where the mother-of-pearl shell was removed. The large ammonite is a lovely display specimen; original matrix provides a natural base. *Measuring 18 x 18in*

**\$2,500 - 3,500**

**To be sold without reserve**

1024<sup>w</sup>

**LARGE RUSSIAN AMMONITE**

*Audolicerias sp.*

*Jurassic*

*Volga River, Ulianovsk Region, Russia*

This delicately curled heteromorphic ammonite has been carefully prepared on its original matrix and displays iridescent mother-of-pearl surfaces on its ribbed shell. *Measuring 14 x 10in*

**\$3,500 - 4,500**



1022



1023



1024





1025

1025<sup>w</sup>

**OPALESCENT AMMONITE**

*Placenticerias meeki*

*Upper Cretaceous*

*Bearpaw Formation, Southern Alberta, Canada*

The stunning coloration of this magnificent ammonite is only part of its appeal. Its bright red opalescent color, with flashes of greens, was produced by the combination of approximately 71 million years of compression (being covered with a layer of ice over one mile deep during the ice ages) and the mineralization of iron, copper and silica precipitated from volcanic ash. Unlike most ammonites recovered from this region, which are flattened by geologic pressure, the present specimen displays a desirable *inflated* shape. *Measuring 20 x 17in*

**\$10,000 - 12,000**



1026

1026<sup>w</sup>

**LARGE RED OPALESCENT AMMONITE**

*Placenticerias meeki*

*Cretaceous*

*Bearpaw Formation, Southern Alberta, Canada*

Eye-popping red coloration is seen in this stunning ammonite from Canada, a locality that produces the most brilliantly colored ammonite specimens in the world. Ammonites arose during the Devonian Period and met their end, along with the dinosaurs, during the K-T extinction. The closest living relative of the ammonite is the chambered nautilus. The present example is nicely *inflated* in shape. *Measuring 20 x 16 in*

**\$12,000 - 15,000**



1027

1027<sup>w</sup>

**LARGE MADAGASCAR AMMONITE –  
PAIR OF SLICES**

*Perisphinctes sp.*

*Jurassic*

*Madagascar*

This aesthetically stunning ammonite was sliced in half and polished on the cut surfaces to exhibit the fascinating growth plates of the once-living ammonite, as well as gorgeous crystals which formed in many of the chambers over millions of years. This large and impressive ammonite pair would be equally at home as the centerpiece of an invertebrate collection or providing a decorative focal point in a luxury interior. (2)  
*Each specimen measuring 18 x 18in*

**\$10,000 - 12,000**

1028<sup>w</sup>

**GROUP OF HETEROMORPHIC  
AMMONITES**

*Emericiceras alpinum, Ancyloceras  
vandenbeeki, Emericiceras barremense*  
*Cretaceous*

*Lower Barremian, Agadir, Morocco*

A truly unique piece exhibiting three heteromorphous ammonite specimens with spikes. A very large and dramatic display specimen. *Specimens measure 25, 16 and 17in respectively; matrix measures 35 x 31 x 11in*

**\$10,000 - 12,000**



1028





1029

1029<sup>w</sup>

**QUARTZ CLUSTER ON STAND**

*Minas Gerais, Brazil*

A classic quartz cluster of substantial proportions which consists of ten well-terminated crystals, the longest of which measures twelve inches in length. The drama of the specimen is heightened through the use of the well-constructed black stand upon which it rests. *Height measuring 18in*

**\$2,500 - 3,500**

**To be sold without reserve**

1030<sup>w</sup>

**LARGE GYPSUM CRYSTAL**

*Mexico*

The delicate mineral, gypsum, is usually mined as a source of plaster, but exceptional crystals are sometimes preserved. The transparent and silky varieties are called selenite, and are said to resemble moonlight. The present offering is showy room-sized display specimen boasting huge crystals. *Measuring 24 x 18 x 20in*

**\$2,000 - 2,500**

**To be sold without reserve**



1030

1031<sup>w</sup>

**LARGE POLISHED CITRINE SPECIMEN**

*Brazil*

A very large citrine crystal with all faces polished creates an amazingly beautiful display specimen. The smoky yellow/brown colors exhibit exceptional clarity. *Measuring 12 x 8 x 8in*

**\$10,000 - 15,000**

1032<sup>w</sup>

**QUARTZ CRYSTAL CLUSTER WITH  
DOUBLE-TERMINATED CRYSTAL**

*Arkansas*

This quartz crystal cluster contains a double-terminated crystal, a highly coveted feature. The orange-pink tones are produced by the iron-rich earth from which Arkansas crystals are recovered. *Measuring 15 x 13 x 7in*

**\$1,500 - 2,000**

**To be sold without reserve**



1031



1032



1033<sup>W</sup>

**INCOMPARABLE FOSSIL ALLIGATOR**

*Alligator mississippiensis*  
Early Pleistocene, Irvingtonian  
Columbia County, Florida

One of the finest and most complete fossil alligators ever discovered, this individual had slid into a limestone crevice on the bottom of a prehistoric lake and was quickly covered by fine silt and clay, fortuitously ensuring its preservation. Recovered only a few years ago in Northern Florida, the virtually complete specimen retains the interesting orange-brown color of the ancient clay. *Length measuring 10 feet*

**\$25,000 - 35,000**

## PROPERTY OF VARIOUS OWNERS

1034

### MANTIS IN AMBER SPECIMEN

*Miocene*

*Chiapas, Mexico*

Entombed in a piece of Miocene amber is a very unusual mantis specimen. Insects in amber, providing *snapshots* of prehistoric life, are coveted by fossil collectors. A marvelous piece. *Measuring 1 3/4 x 1 x 1/2 in*

**\$2,000 - 3,000**

1035

### RARE FEATHER PRESERVED IN BURMITE AMBER

*Indeterminate species*

*Cretaceous*

*Jukawng Valley, Northern Myanmar*

Representing a fascinating mystery, the feather preserved in this 100-million-year-old amber may either originate from a bird or a dinosaur. Most amber is too young to contain dinosaur remains, but *Burmite*, an older amber, which existed during the Cretaceous, the *age of dinosaurs*. Both coelerasaur and tyranosaur dinosaurs are known to have been feathered, from the outstanding fossils that have been found in Liaoning, China, which have been dated from 130-110 million years old.

The present large, branching symmetric feather specimen is beautifully preserved with an intact central rachis. As it is symmetric, this is not a flight feather; rather is it from the body or arm of a 100-million-year-old dinosaur or bird. The feather displays remarkable detail and there appears to be some feather pigment still present. This rare and important feather is one of the largest and best-preserved feathers found in Burmite amber. Offered in a Riker mount. *Nugget measuring 30 x 23 millimeters; specimen measuring 1 in*

**\$2,800 - 3,800**

1036

### PARTIAL LIZARD IN BURMITE AMBER CABOCHON

*Indeterminate species*

*Cretaceous*

*Hukawng Valley, Myanmar (Formerly, Burma)*

Embedded in red-orange color amber, which has been fashioned into a cabochon, this lizard is more intact than most lizard specimens from the Hukawng Valley, with torso and most thigh/leg structures preserved. Most likely, the individual was alive when it became trapped in the prehistoric tree sap; lizards that die before being covered with sap began to decay before complete preservation could take place. (Burmite is 100-million-year-old amber that is found in the Hukawng Valley.) *Measuring 1 in; cabochon measuring 1 in*

**\$2,000 - 3,000**

1037

### LIZARD FOOT IN BURMITE AMBER

*Indeterminate species*

*Cretaceous*

*Hukawng Valley, Myanmar (Formerly, Burma)*

Arguably the most rare and desirable of creatures preserved in amber are lizards. Most animals, including lizards, are too large to be trapped in the small amounts of tree resin that fell on the ground 100 million years ago in the area now known as the Hukawng Valley of Myanmar. The present specimen is a well-preserved lizard foot encased in orange colored *Burmite* Amber. Also seen are several small insects and a small twig. The unusual lizard foot is very similar to that of the living green Basilisk Lizard, which has an extended fourth toe and webbing between its toes, allowing it to walk on water. Offered in a Riker mount with a photo of the lizard foot. (Burmite is 100-million-year-old amber that is found in the Hukawng Valley.) *Amber measuring 15 x 110 millimeters; length of lizard foot measuring 15 millimeters*

**\$2,000 - 3,000**



1035



1036



1037





1038

1038

**AMBER SPECIMEN WITH LARGE INSECT**

*Miocene*

*Chiapas, Mexico*

Amber specimens with inclusions form a fascinating area of fossil collecting. This specimen exhibits a large flying insect known as a mastoderm. Superlative preservation of the translucent wings is seen in the insect. A remarkable display piece. *Measuring 2 3/8 x 1 1/4 x 1in*

**\$2,000 - 3,000**



1039

1039

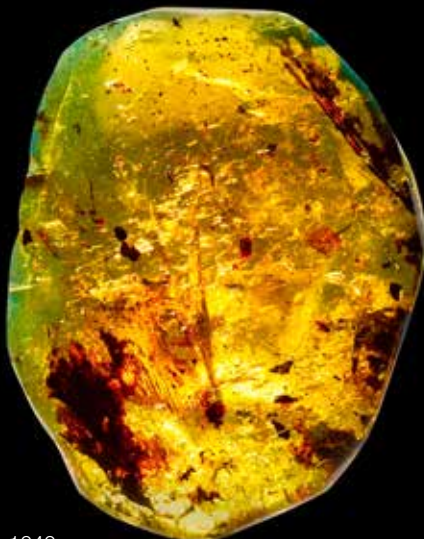
**LARGE AMBER SPECIMEN**

*Miocene*

*Chiapas, Mexico*

Amber specimens with inclusions form a fascinating area of fossil collecting. This specimen exhibits a large flying insect known as a mastoderm. Superlative preservation of the translucent wings is seen in the insect. A remarkable display piece. *Weighing 74.2 grams and measuring 3 3/4 x 2 5/8 x 3/4in*

**\$2,500 - 3,500**



1040

1040

**MASSIVE AMBER SPECIMEN**

*Miocene*

*Chiapas, Mexico*

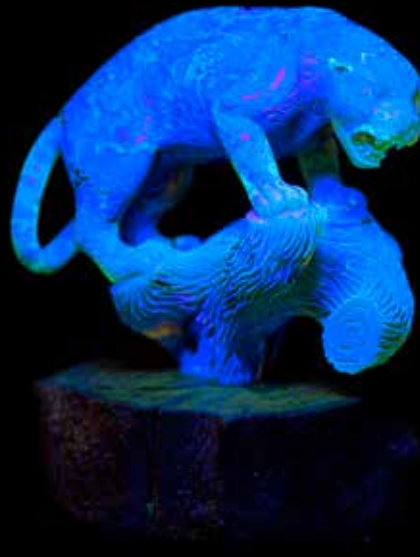
Numerous inclusions are visible in this very large amber specimen from Chiapas, Mexico. Its size alone makes it noteworthy; the inclusions add fascination to this interesting piece. *Weighing 328 grams; measuring 5 3/8 x 4 x 1 7/8in*

**\$2,500 - 3,500**





1041



1041

1041

# **EXCEPTIONAL AMBER CARVING DEPICTING A JAGUAR**

*Miocene*

*Chiapas, Mexico*

The amber of Chiapas, Mexico, produced by the prehistoric hymanea tree, exhibits bluish hues when viewed under ultraviolet light, while appearing greenish under natural light. The present offering is a superlative carving realistically depicting a jaguar, carved from the fascinating 30-23-million-year-old Chiapas amber. The animated carving, created by a master carver of San Cristobal de las Casas, surmounts a rustic wooden base. *Measuring 4 1/2 x 2 1/2 x 4in with base*

**\$3,000 - 5,000**

1042

# **AMBER CARVING--"THE OCEAN GODDESS"**

*Miocene*

*Chiapas, Mexico*

The amber of Mexico produced by the prehistoric hymanea tree displays beautiful colors when viewed under different light sources. Under ultraviolet light it appears blue, while under sunlight and bright full spectrum light, it appears green. The present offering is an intricate carving of Chiapas amber depicting a fantastical and erotic *ocean goddess* with skin texture reminiscent of a mermaid. Created by a master carver in San Cristobal de las Casas, the carving surmounts a wooden base with a carved floral motif. *Measuring 3 x 7in with base*

**\$3,500 - 5,000**



1042



1042



1043

1043  
**GROUP OF SEVENTEEN PYRITIZED  
AMMONITES HALVES**

*Russia*

With pyrite replacement of the cellular structure apparent on the faces of the specimens and with iridescent surfaces to the reverse side. *Largest diameter measures 2 1/4in*

**\$600 - 800**

**To be sold without reserve**



1044

1044<sup>w</sup>

**DECORATIVE FRENCH AMMONITE**

*Arietities bucklandi*

*Early Jurassic*

*France*

A rich black coloration, with a strong ribbed texture, distinguishes this aesthetic ammonite on original matrix. *Measuring 11 1/2 x 11 x 3in*

**\$800 - 1,000**



1045

1045<sup>w</sup>

**LARGE AMERICAN AMMONITE**

*Placentoceras meeki*

*Cretaceous*

*Pierre Shale, South Dakota*

A large ammonite displays the intricate patterns of the chamber sutures, which developed as the animal grew in size, distinguishing this large ammonite from the Pierre Shale of South Dakota. *Measuring 18 x 16 x 5in*

**\$3,500 - 4,500**

1046<sup>w</sup>

**UNCOMMONLY LARGE BACULITE**

*Baculites grandis*

Late Cretaceous, Lower Maastrichtian

Pierre Shale, Wyoming

*Baculites grandis* is the world's largest species of the genus, *Baculites*, and the present specimen is one of the largest known examples of its species. Aptly named, the species, found in the Black Hills Region of Wyoming and South Dakota, exceeds the size of all others in length and girth. These animals were among the most advanced invertebrates of the Cretaceous Period.

Display includes reinforcing steel embedded inside the specimen in three sections. Length measuring 66in

**\$12,000 - 15,000**

Offered on a custom metal stand.



1046

1047<sup>w</sup>

**EXCEPTIONAL, LARGE OPALESCENT AMMONITE**

*Placenticeras meeki*

Cretaceous

Bearpaw Formation, Southern Alberta,

Canada

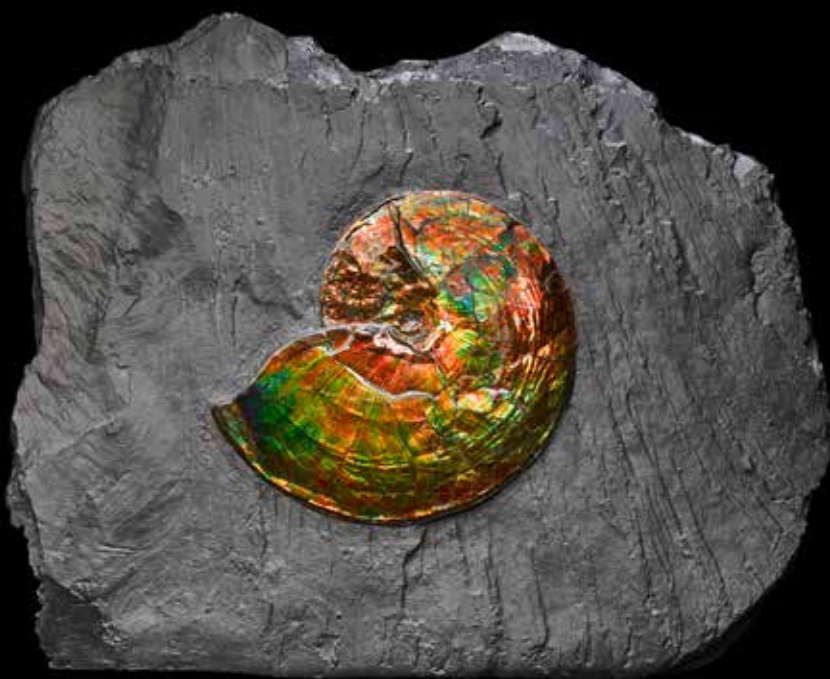
Ammonite fossils are found on every continent. Treasured for their appearance and form, some show intricate suture patterns, which are created by the complex walls dividing the inside of the shells. Those from Southern Alberta, however, display remarkably brilliant colors not seen in ammonites from other localities. Coveted by collectors the world over, their stunning palettes fortuitously result from the light interference by the shell layers. The present breathtaking example, of considerable size, exhibits a dazzling, luminous red color predominating, with vivid emerald green throughout. Flashes of yellow and red-orange are also seen in this magnificent specimen, which, unlike most specimens of its kind, is equally stunning on both sides. Measuring 22 x 19 1/2in

**\$35,000 - 45,000**



1047





1048

1048<sup>w</sup>

# **OPALESCENT AMMONITE IN MATRIX**

*Placenticeras meeki*

*Cretaceous*

*Bearpaw Formation, Alberta, Canada*

Revealed in the dark shale matrix in which it was discovered, a beautifully preserved ammonite displays brilliant green and red coloration. Ancestor to the modern chambered nautilus, ammonites have existed for nearly 330 years, yet few fossil ammonites approach the beauty of specimens from this locality. Exhibiting the brilliant iridescence of the highly desired specimens from the Bearpaw Formation, the present well-formed specimen shimmers in dramatic contrast to the matrix. *Ammonite diameter measuring 10 x 1/5in; matrix 24 x 19 x 3in*

**\$30,000 - 40,000**

1049<sup>w</sup>

# **PAIR OF ENGLISH AMMONITES**

*Caloceras johnstoni*

*Lower Jurassic*

*Lower Lias, Sommerset, United Kingdom*

Spectacularly large for their locality, a pair of exquisitely preserved Jurassic ammonites exhibit deep textural relief, producing a visually captivating presentation. An aesthetically pleasing composition on an irregularly shaped natural matrix. *Diameter of specimens measuring 24 and 18in respectively; matrix measuring 44 x 29in*

**\$12,000 - 15,000**

1050

No lot

1051<sup>w</sup>

# **TRICERATOPS HORN**

*Triceratops horridus*

*Late Cretaceous*

*Hell Creek Formation, Wyoming*

One of the most recognizable dinosaurs known, *Triceratops* is truly iconic. Displaying a small nasal horn and two large horns over its eyes, it was a formidable creature. Epic struggles against *Tyrannosaurus rex* have been depicted in books and movies, but the interaction between the two was probably more of a stand-off than an actuality. Yet, there is one specimen with a broken off and healed orbital horn displaying impressions of teeth marks of a *T. rex*. In life, *Triceratops* horns would have displayed a horny sheath which could have been as large as twenty to fifty percent the size of its core. The horn is complete on one side and has not been restored on the reverse. An excellent specimen. *Measuring 21 1/2in*

**\$2,000 - 3,500**



1049



1051



1052

1052

### **LARGE TYRANNOSAUR TOOTH**

*Carcharodontosaurus saharicus*

Late Cretaceous

Kem Kem Beds, Africa

A large tyrannosaurid tooth with most enamel and some serrations visible. This tooth is large for the species. *Carcharodontosaurus saharicus* was one of the largest known predatory dinosaurs of the Late Cretaceous, growing to between twelve and thirteen meters in length. Measures 4 1/4in

**\$3,500 - 4,500**

1053

### **AFRICAN TYRANNOSAURID TOOTH**

*Carcharodontosaurus saharicus*

Late Cretaceous

Kem Kem Beds, Africa

*Carcharodontosaurus saharicus* was slightly larger than *Tyrannosaurus* and *Gigantosaurus*, but still smaller than *Spinosaurus*. The present specimen is a large and impressive tooth from *Carcharodontosaurus saharicus*, of North Africa. Most of the serrations are visible on this caramel colored tooth and good overall enamel condition is seen. Measures 3 1/4in

Measures 3 1/4in

**\$1,800 - 2,200**

1054

### **AFRICAN DINOSAUR TOOTH**

*Carcharodontosaurus saharicus*

Late Cretaceous

Kem Kem Beds, Africa

A very large tooth exhibiting fine serrations and a deep brown enamel. Like *Spinosaurus*, specimens of *Carcharodontosaurus saharicus* were destroyed during World War II, but many more specimens have been found since then, allowing science to accurately describe them. Measures 3 5/8in

**\$3,000 - 4,000**



1053



1054





1055



1059



1056

1055

#### **T. REX. TOOTH**

*Tyrannosaurus rex*

*Late Cretaceous*

*Lance Creek Formation, Wyoming*

A wonderful tooth recovered from a private ranch in Northeastern Wyoming, this robust 68-65-million-year-old tooth boasts nice serrations and no restoration. *Measuring 2 1/2in*

**\$2,000 - 3,000**

1056

#### **FINE TYRANNOSAURUS REX TOOTH**

*Tyrannosaurus rex*

*Cretaceous*

*Hell Creek Formation, Montana, USA*

This pristine *T. rex* tooth boasts an excellent tip and serrations, displaying slight feeding wear at the very tip, which occurred when the individual was still alive. The tooth is rather thick, and displays the sharp squared serrations which define it as *T. rex*. All *T. rex* teeth are *shed teeth* (teeth shed during the lifetime of the animal), except the very few that are found with the approximately twelve partial skeletons that have been recovered. The present impressive specimen was found in an ancient river or lake bed on a private ranch in the Hell Creek Formation of Montana. All *T. rex* teeth are in great demand, but those very few that are not broken and repaired, with original tips, are rarely encountered. This 65-67-million-year-old treasure is a covetable find. *Length measuring 2 in*

**\$5,500 - 8,000**



1058

1057

### ENORMOUS TYRANNOSAURUS REX TOOTH

*Tyrannosaurus rex*

Cretaceous

Hell Creek Formation, Harding County, South Dakota

All *T. rex* teeth are in great demand due to the rarity of fossils from the fascinating apex predator of the *age of dinosaurs*. After Henry Fairfield Osborn, of the American Museum of Natural History, invented the name, *Tyrannosaurus rex*, meaning *tyrant lizard king*, in 1907, the species captured the public's imagination, a phenomenon that has continued to today. The dearth of scientific fact about the rare species has provided fertile ground for the theropod's still-vivid reputation to take root in popular myth.

The present exceptional offering is an anterior (front) fusiform (tapering) tooth specimen, displaying both serrate rows in virtually perfect condition. Every visible denticle is sharp, an attribute for which the finest *T-rex* teeth are coveted – and which would have served a saw-like cutting function in the formidable individual's feeding. The specimen also displays a beautiful natural patina.

*T. rex*'s jaws, which measured up to four feet in length, held between fifty and sixty bone-crushing teeth capable of handling five hundred pounds of meat in one bite. As teeth were broken, replacement teeth grew in. A very recent study estimated *T. rex*'s bite force at 7,800 pounds – more than double the bite force of any living species. Scientists theorize that *T. rex* ingested fragments of shattered bones for sustenance. *Measuring 6 1/8in*

**\$18,000 - 25,000**

1058

### GROUP OF THREE THERAPOD TEETH

*Nanotyrannus, Tyrannosaurus rex*

Cretaceous

Lance Creek Formation, Wyoming

Three theropod teeth, identified as two separate genera, comprise this intriguing collection. There has been much scientific debate about whether *Nanotyrannus* represents a discrete genus or whether specimens identified as *Nanotyrannus* are actually from juvenile *T. rex* individuals. The debate has often centered on the proportions of *Nanotyrannus*' teeth: did they develop into the characteristic shape for which *T. rex* is well-known? Here is a unique opportunity to acquire both types of teeth. The three specimens were collected on a private ranch and display complete enamel. *Measuring 7/8, 1 1/8 and 1 5/8in respectively*

**\$5,500 - 7,000**

1059

### THERAPOD TOOTH

*Nanotyrannus lancensis*

Cretaceous

Hell Creek Formation, Wyoming

A close relative of the *Tyrannosaurus rex* is represented by a shed tooth which exhibits wear near the end of the tooth, caused by its feeding habits during its lifetime. Excellent serrations and a natural patina recommend this beautiful specimen. *Measuring 1 3/4in*

**\$1,500 - 1,800**



1057

1060

**SPECTACULAR TRICERATOPS SKULL**

*Triceratops prorsus*

Cretaceous

*Hell Creek Formation, Marmarth, North Dakota*

Over seven feet in length, this impressive *Triceratops prorsus* skull boasts the preservation of the braincase within the skull and all three original horns – attributes seldom seen in this rare dinosaur. The characteristic frill of this fascinating genus is also presented in the meticulously prepared specimen. Extraordinarily complete, the braincase and both quadrates are present beneath the skull.

The remarkable adult *Triceratops prorsus* was discovered in the Hell Creek Formation of North Dakota, on a ranch near Marmarth, North Dakota, in August of 1999. Excavated by the late Dr. Bobby Deaton of Texas Wesleyan University, it remained in plaster field jackets for the following seventeen years. Painstaking laboratory preparation has taken place only in the past year.

Known for its characteristic brow horn and extensive frill, *Triceratops* is one of the most recognizable dinosaur genera. *Triceratops* lived at the end of the Cretaceous, 65 million years ago, in vast herds which were thought to have fed near the shorelines of the intracontinental seaway, which isolated the western half of North America from the rest of the continent.

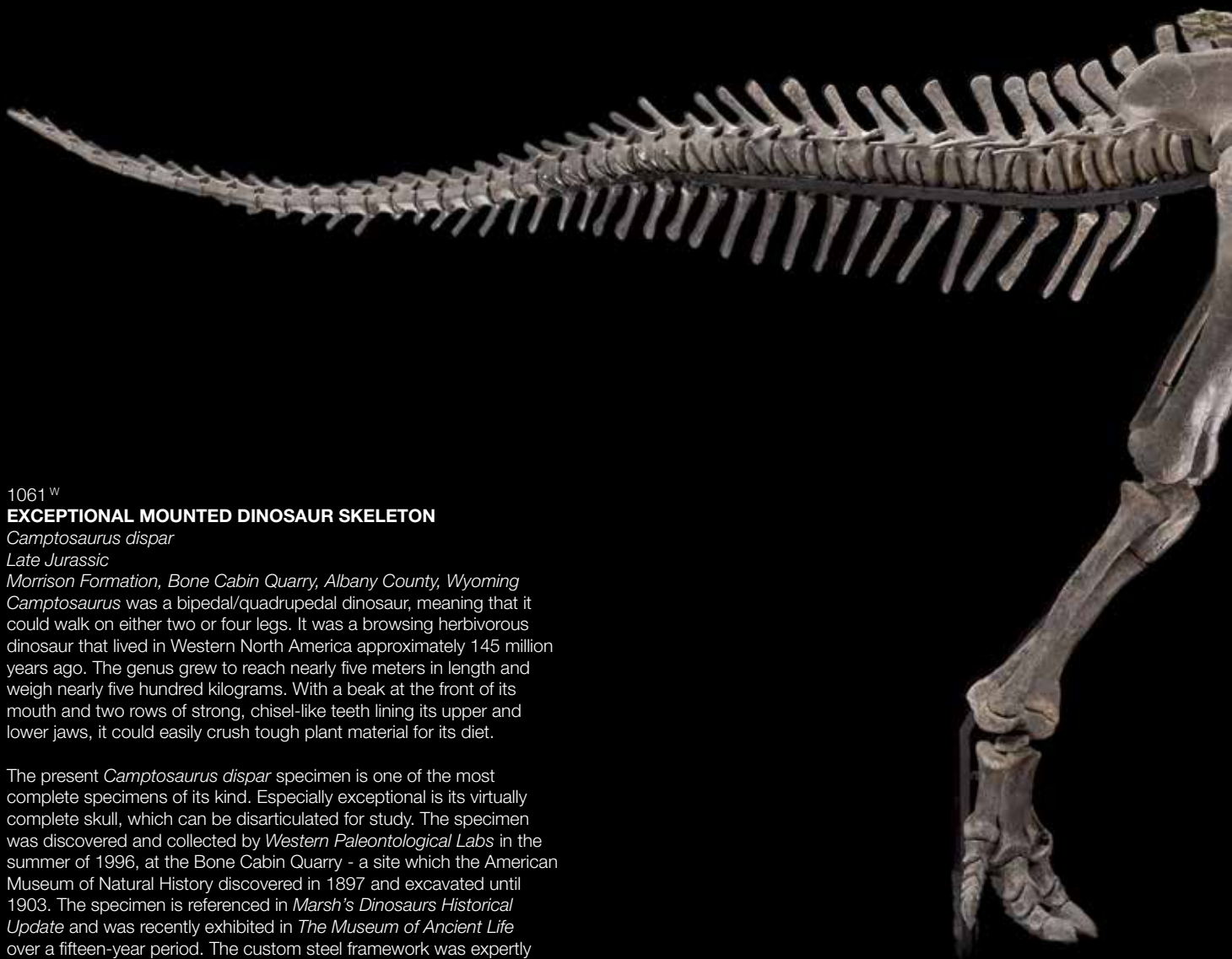
The present awe-inspiring *Triceratops prorsus* skull specimen is offered on an expertly designed steel armature and display stand. Length measuring 86in; height measuring 81in including stand

**\$125,000 - 150,000**









1061<sup>w</sup>

#### **EXCEPTIONAL MOUNTED DINOSAUR SKELETON**

*Camptosaurus dispar*

*Late Jurassic*

*Morrison Formation, Bone Cabin Quarry, Albany County, Wyoming*

*Camptosaurus* was a bipedal/quadrupedal dinosaur, meaning that it could walk on either two or four legs. It was a browsing herbivorous dinosaur that lived in Western North America approximately 145 million years ago. The genus grew to reach nearly five meters in length and weigh nearly five hundred kilograms. With a beak at the front of its mouth and two rows of strong, chisel-like teeth lining its upper and lower jaws, it could easily crush tough plant material for its diet.

The present *Camptosaurus dispar* specimen is one of the most complete specimens of its kind. Especially exceptional is its virtually complete skull, which can be disarticulated for study. The specimen was discovered and collected by *Western Paleontological Labs* in the summer of 1996, at the Bone Cabin Quarry - a site which the American Museum of Natural History discovered in 1897 and excavated until 1903. The specimen is referenced in *Marsh's Dinosaurs Historical Update* and was recently exhibited in *The Museum of Ancient Life* over a fifteen-year period. The custom steel framework was expertly designed to produce an exciting animated pose. *Length measuring 12 feet; height measuring 4 feet*

**\$250,000 - 300,000**







1062<sup>w</sup>

# **IMMENSE DINOSAUR LEG**

*Diplodocus* sp.

Jurassic

Morrison Formation

Dana Quarry, Wyoming

A thigh, leg, and foot specimen of prodigious size represents one of the largest creatures ever to exist on the planet. Sauropods were the most massive dinosaurs among the behemoths of their time. An infraorder of long-necked herbivorous dinosaurs, they walked on four short, thick, five-toed legs. *Diplodocus*, the likely genus of the present specimen, reached a length of over one hundred feet. It possessed a long, whip-like tail to balance its very long neck, a small head with nostrils above the eyes and pencil-like teeth located in the front of the mouth. The vertebrae of these prehistoric behemoths featured hollow chambers to lighten their weight.

The present massive specimen attests to the almost unimaginable size of these Jurassic giants. The specimen is composed of a mounted femur, tibia and fibula and foot. An expertly crafted metal armature supports this awe-inspiring discovery. *Height measuring 11 feet*

**\$35,000 - 45,000**

1062

1063

**GIANT SHRIMP**

*Aeger tipularus*

*Cretaceous*

*Solnhofen, Germany*

From the lithographic limestone quarry of Solnhofen, Germany, this large, highly detailed giant shrimp with intact antennae is nicely positioned on natural limestone matrix.

The museum quality fossil is 150 million years old and displays exquisite detail in its legs, feeding arms and very long antennae.

*Specimen length measuring 7in; antennae measuring 7in; matrix measuring 15 x 13in*

**\$2,000 - 2,500**

**To be sold without reserve**



1063

1064<sup>w</sup>

**EXQUISITE DRAGONFLY**

*Aeschnogomphus intermedius*

*Jurassic*

*Eichstatt, Bavaria, Germany*

The Solnhofen lithographic limestone was deposited during the Jurassic Period, in a small lagoon separated from the open sea, which resulted in *salinity stratification*: Upper levels of water were of normal salinity, but the bottom became hypersaline and devoid of oxygen. This allowed for the fossilization of the tiniest details of the insects that thrived there 150 million years ago, as exemplified by the present stunning specimen. *Specimen measuring 6 x 5in; matrix measuring 11 1/2 x 10 1/2in*

**\$3,000 - 4,000**



1064

1065

**EXQUISITE FOSSILIZED DRAGONFLY – PART AND COUNTERPART**

*Indeterminate species*

*Eocene*

*Green River Formation Wyoming*

Rarely does a fossil form on a natural cleavage plane of stone matrix, resulting in two treasures in one when it is excavated. Adding to this uncommon occurrence, dragonflies are seldom found in this geologic formation due to the fragility of the wings and other body parts. Here, minute detail is seen, including the actual veins of the wings. Both plates are beautifully preserved, displaying wonderful detail. A gorgeous and rare specimen. (2) *Each matrix measuring 8 x 5 1/2in*

**\$2,000 - 3,000**



1065



1066



1068

1066<sup>w</sup>

#### **FOSSIL CRAB**

*Harpactocrinus quadriobatus*

*Eocene*

*Monte Baldo, Italy*

Exhibiting well preserved claws and carapace (shell), this fossil crab can easily be envisioned in its former life, scurrying between rock crevices in an Early Eocene marine environment, its claws as weapons designed to grasp its prey. Prepared on original matrix. Offered with a custom acrylic case. *Measuring 5 x 4 x 3 1/2in*

**\$2,200 - 2,800**

1067<sup>w</sup>

#### **PREHISTORIC CRAB ON MATRIX**

*Tumidocarcinus giganteus*

*Miocene*

*Glen Afric Beach, South New Zealand*

During the Miocene, 15 -10 million years ago, crabs flourished in much the same form as they do today. Crustaceans are the second largest group of arthropods, following the insects, yet relatively few fossil crab specimens of high quality are seen on the market. The exceptional preparation of the present specimen reveals a large crab poised to pounce upon its prey. *Measuring 11 x 10 x 10in*

**\$6,000 - 7,500**



1067

1068

#### **GROUP OF THREE FOSSILS - GRASSHOPPER, CRAB, SHRIMP**

*Pycnophlebia, Eryon arciformis, Antrimpos*

*Jurassic*

*Eichstatt, Bavaria, Germany*

The 150-million-year-old limestone deposits of Solnhofen are famous for their beautifully preserved fossils, including crustaceans, insects, fish and birds. Offered is a group of three beautifully preserved Solnhofen fossils – a grasshopper, a crab and a shrimp. (3) *Grasshopper measuring 5in; crab measuring 3in, shrimp measuring 6in*

**\$2,500 - 3,200**





1069

1069<sup>w</sup>

### LARGE WOOLLY MAMMOTH TOOTH

*Mammuthus primigenius*

*Pleistocene*

*Alaska*

Closely related to the modern Indian Elephant, the extinct *Mammuthus primigenius* lived on the tundra of Asia Europe and North America during the Pleistocene. The present specimen is a fine tooth exhibiting much of the root. *Measuring 11 x 8 x 4in*

**\$1,200 - 1,500**

1070<sup>w</sup>

### EXTINCT OLIGOCENE MAMMAL

*Leptictis* sp.

*Oligocene*

*White River Formation, South Dakota*

*Leptictis*, a small insectivore from the White River Badlands of South Dakota, is an uncommon find. Insectivores are carnivores that feed mainly on insects and similar small creatures. They belong to several families, particularly the hedgehogs, shrews, and golden moles. The present offering is a nearly complete skull and partial skeleton from an extinct genus of insectivore. *Measuring 8 x 6 x 8in*

**\$2,500 - 3,500**

1071<sup>w</sup>

### OREODONT ON MATRIX

*Merycoidodon culbertsoni*

*Oligocene*

*White River Formation, South Dakota*

*Merycoidodon culbertsoni* was a small browsing animal about the size of a sheep. Belonging to the artiodactyls (even-toed mammals), its large canine teeth are misleading in that it is not a carnivore. Wider and more robust than a carnivore's teeth, this animal's teeth were used in rooting out grubs and plants. The present excellent specimen, prepared on matrix, exhibits most of the skull and teeth, as well as part of the hind legs. From the famous White River Formation of South Dakota. *Matrix measuring 17 x 7in; skull measuring 7 in*

**\$2,000 - 2,500**

1072<sup>w</sup>

### OREODONT SKULL WITH BONES

*Merycoidodon culbertsoni*

*Oligocene*

*Orella Member, Brule Formation, Sioux County, Nebraska*

Remotely related to the camel, *Merycoidodon* possessed four hooves on each foot and a large, pig-like head. Herds of these bizarre creatures grazed Oligocene North America for millions of years. The present specimen comprises a skull with separated lower jaws, presented with leg bones. *Measuring 13 x 12 x 6in*

**\$1,500 - 2,200**



1070



1071



1072



1073

1073<sup>w</sup>

### **CAMEL SKELETON**

*Poebrotherium*

Oligocene

White River Formation, South Dakota

The *Poebrotherium* was similar in appearance to modern camels. Fossils of this animal have been found in all major White River sedimentary environments. The current specimen exhibits a nice skull with partial skeleton. Measuring 34 x 11 in

\$2,000 - 2,500

1074<sup>w</sup>

### **EXTINCT AMERICAN LION – AN ENORMOUS SKULL**

*Panthera atrox*

Late Pleistocene - Rancholabrean

Alaska

One of the most rare and sought-after carnivores, *Panthera atrox*, formerly known as *Felis atrox*, is the largest cat that ever lived. The extinct species is a relative of the African Lion (*Panthera leo*). The American Lion is sometimes known as the North American Lion. Weighing approximately 700-800 pounds, the apex ice age predator boasted an estimated bite force of 1,800 pounds per square inch. Its muscularly built body, with longer, more powerful forelegs than an African lion, gave it a greater advantage in chasing prey. It ranged from Alaska to the middle of South America.

The present very large American Lion skull was discovered in the permafrost of an Alaskan gold mine. The massive individual to which this skull belonged was likely one of the largest cats to have ever walked the planet. The fossilized bone, displaying light brown coloration, is exceedingly well-preserved. Specimen length measuring 16 in; overall 12 x 16 x 12 in x in

\$45,000 - 65,000



1074





1075



1076

1075<sup>w</sup>

**ENORMOUS WALKING WHALE TEETH - UNDESCRIBED SPECIES**

*Protocetid*

*Middle Eocene, Bartonian*

*Aridal Formation, Guernsey, Southwestern Morocco*

From a newly discovered site in Southwestern Morocco, these specimens belonged to an extinct behemoth representing an undescribed species. One of the largest mammalian carnivores to exist on the planet, the *walking whale* was a semi-aquatic mammal which, through evolution, lost its hind limbs; its front limbs developed into flippers. The present offering comprises a lower jaw section with two huge teeth, a maxilla section with an upper tooth and an individual upper tooth. (3) *Larger lower jaw with teeth measuring 9 1/2 x 7 x 2in*

**\$2,200 - 2,800**

1076<sup>w</sup>

**GROUP OF THREE WALKING WHALE TEETH - UNDESCRIBED SPECIES**

*Protocetidae*

*Middle Eocene, Bartonian*

*Aridal Formation, Guernsey, Southwestern Morocco*

*Walking whales* were discovered only recently, when the remains of an early transitional whale was discovered. The fascinating semi-aquatic mammal possessed both front and rear limbs. Over millions of years, evolution transformed the front limbs into flippers and removed the rear limbs entirely. *Walking whales* most likely spent most of their time in the water, hunting fish. The present specimens are very exciting new finds of an important whale ancestor, comprising four *walking whale* teeth on three matrices (3). *Length of largest tooth measuring 3 3/8in*

**\$6,500 - 8,500**

1077

**FINE MEGALODON TOOTH**

*Carcharodon megalodon*

*Miocene*

*South Carolina*

This large shark tooth displays nearly perfect serrations and a beautiful gray patina on the enamel. A complete root also recommends this specimen. *Measuring 5in*

**\$2,000 - 3,000**

**To be sold without reserve**

1078

**ROBUST SHARK TOOTH**

*Carcharodon megalodon*

*Miocene*

*South Carolina*

Displaying amazing serrations, complete root and gray-black enamel, this tooth is a wonderful addition to any collection. *Measuring 5 1/2in*

**\$2,000 - 3,000**

**To be sold without reserve**



1077



1078



1079



1080



1082



1081



1083

1079

#### **LARGE MEGALODON TOOTH**

*Carcharodon megalodon*

*Miocene*

*South Carolina*

This large specimen displays attractive cream-brown colored enamel, an intact root, and exceptionally sharp serrations. *Measuring 5 1/2in*

**\$2,000 - 3,000**

**To be sold without reserve**

1080

#### **HUGE MEGALODON SHARK TOOTH**

*Carcharodon megalodon*

*Miocene*

*South Carolina*

*Megalodon* was the largest shark that ever lived, growing to more than fifty feet in length. This 20 - 15-million-year-old tooth was found in the muddy river waters of South Carolina. Estimating the length of a shark at about ten feet in length to each inch of tooth, the behemoth from which this specimen originated would have measured over 60 feet long. The large specimen displays lovely gray-black enamel, an intact black root and excellent, sharp serrations. Offered on a custom stand with identification as *Megalodon*. *Measuring 6 in on the diagonal*

**\$2,500 - 3,500**

1081

#### **GREAT WHITE SHARK TOOTH AND WHALE VERTEBRA**

*Carcharodon carcharias*

*Neogene-Pliocene*

*Pismo Formation, California, USA*

Great White sharks are rare today and fossilized teeth of their ancestors are seldom encountered. This interesting offering not only includes a perfectly preserved two-inch Great White Shark's tooth but also a partial whale vertebra, which may represent the prey animal that caused the tooth to be dislodged from the shark's mouth. It is rare to find a predator/prey event preserved in the fossil record. The remarkable fossils are preserved on sandstone matrix from the 5 - 2 million-year-old Wingate Bay Bonebed of the Pismo Formation in California. *Tooth measuring 2in; vertebra measuring 8 x 4in; matrix measuring 11 x 8in*

**\$2,000 - 3,000**

**To be sold without reserve**

1082<sup>w</sup>

#### **FRAMED FOSSIL FISH**

*Diplomystus dentatus*

*Eocene*

*Lincoln County, Wyoming*

A limestone slab with a large fossil fish

*Diplomystus dentatus*. *Measuring 20 x 14 1/2in overall; length of fish 13in*

**\$800 - 1,200**

*Offered in a rustic wooden frame.*

1083<sup>w</sup>

#### **FOSSIL FISH IN RUSTIC FRAME**

*Mioplosus labracoides*

*Eocene*

*Lincoln County, Wyoming*

Excavated and prepped over forty years ago and originating from an old collection in Long Island this is an expertly prepared example of the ancestor of the bass. *Measuring 16 x 15in; length of fish 13in*

**\$400 - 600**

*Offered in a rustic wooden frame.*





1085

1084<sup>w</sup>

#### UNUSUAL FOSSIL FISH FROM TEXAS

*Paranursallia* sp.

Cretaceous

Uvalde County, Texas

Virtually unknown from geologic deposits in the United States, this fish, from the genus, *Paranursallia* may belong to the species *gutturosum*. From the order Pycnodontini, members of which display armor-like rhomboidal scales and compressed bodies, this fascinating example of a reef fish from the *Age of Dinosaurs* boasts an exceptionally well-preserved skull. Fish measuring 10 1/4 x 8 1/2in; overall 18 x 13in

\$4,500 - 6,000



1084

1085<sup>w</sup>

#### ASTONISHING TEXAN FOSSIL FISH - UNDESCRIBED SPECIES

Family Pachycormid - Undescribed Species

Cretaceous

Uvalde County, Texas

A sensational find from Texas, this large, attractive fossil fish belongs to an undescribed species of Pachycormidae, a family of marine ray-finned fishes best known from the Jurassic Period. Some survived into the Cretaceous, as did the present individual, but the entire family is now extinct. This amazing and important find from the *Age of Dinosaurs* exhibits large pectoral fins and a very unusual dorsal fin. Specimen length measuring 34in; overall 49 x 25 x 1in

\$20,000 - 30,000



1086

1086<sup>w</sup>

#### FOSSIL FISH IN LIMESTONE – FRAMED MURAL

*Phareodus testis*, *Diplomystus dentatus*, *Knightia eocaena*

Eocene

Green River Formation, Wyoming

Beautifully preserved 51-million-year-old fossil fish make an attractive natural composition in this mural. The specimens were professionally prepared in the limestone matrix in which they were discovered with the use of pneumatic tools and micro-abrasion, which removed the limestone to uncover the fascinating specimens beneath. The fish are completely original with no restoration. Framed in tropical walnut and fitted with a cleat system for ease of wall mounting. Fish length measuring 19in; overall 41 7/8 x 27 7/8in

\$2,500 - 3,500



1087

1087<sup>w</sup>

**MULTIPLE FOSSIL FISH – FRAMED MURAL**

*Phareodus testis, Diplomystus dentatus, Knightia eocaena, Priscacara serrata*  
Eocene

Green River Formation, Wyoming

This amazing mural attests to the variety of fish species living in the prehistoric subtropical freshwater lake system now known as the Green River Formation. The noteworthy plate provides a *time capsule* of Early Eocene fishes from the limestone sediments of ancient *Fossil Lake* located in Southwest Wyoming, featuring four distinct species of fish. All fish were original to this limestone matrix recovered from the bottom capping oil shale layers. They display pristine preservation, with no restoration. Offered in a frame. *Measuring 30 x 29in*

\$4,000 - 5,000



1088

1088<sup>w</sup>

**PREDATORY PIRANHA-LIKE FISH**

*Phareodus encaustus*

Eocene

*Fossil Butte Member, Green River Formation, Wyoming*

Similar to the modern piranha, *Phareodus encaustus* was one of the main predators of the prehistoric lake system making up the Green River Formation. The needle-like conical teeth of this genus of the family *Osteoglossidae* attest to its carnivorous habit. The present large example is exceptionally well preserved, displaying the extension of both pectoral fins and superb scale definition. *Specimen measuring 22in; matrix measuring 29 x 41in*

\$5,000 - 6,000



1089<sup>w</sup>

# **RARE PREDATORY FISH EATING A FISH**

*Amia pattersoni*, *Notogoneus osculus*, *Diplomystus dentatus*

Eocene

Green River Formation, Wyoming

Considered rare, both for its genus and extremely unusual presentation as an *aspiration* (fish eating a prey fish), this specimen is an exciting and covetable find. Within the stomach region of the 2 ½-foot *Amia* is an articulated 20-inch *Notogoneus osculus*, attesting to the voracity of the species. This specimen is featured in Dr. Lance Grande's recently published *The Lost World of Fossil Lake* in figure #57, page 122. The rear half of the fish is preserved in a lateral view while the skull and front half are twisted into a dorsal view, allowing a view of both sides of the skull. A few of the caudal fin rays are visible protruding from the right jaws. The scale patterns and fins are exceptionally well defined. A large *Diplomystus dentatus* is preserved next to the *Bowfin*. Both fish on this slab of 52-million-year-old limestone are 100% original and natural to the limestone matrix. *Amia* length measuring 30in; overall 54 x 37in

**\$65,000 - 75,000**





1090

1090<sup>w</sup>

# **RARE PREHISTORIC PADDLEFISH**

*Crossopholis magnicaudatus*

*Eocene*

*Green River Formation Wyoming*

A very rare species from the world-renowned *Green River Formation*. The axial skeleton of paddlefishes is composed largely of soft tissues, which do not typically fossilize, accounting for their rarity as fossilized specimens. Modern paddlefishes have tiny eyes, and the paddle is a sensory device lined with thousands of electroreceptor organs, which allow the fish to navigate and locate food in dark, cloudy waters. The present well-preserved, expertly prepared specimen is framed in tropical walnut and fitted with a cleat system for ease of wall display.

*Specimen measuring 34in; matrix measuring 24 x 35in*

**\$4,000 - 6,000**



1091

1091<sup>w</sup>

# **SUPERB FOSSIL GAR FISH**

*Atractosteus simplex*

*Eocene*

*Fossil Butte Member, Green River Formation, Wyoming*

Lazarus taxa, living fossils are organisms that were thought to be extinct, which are discovered in modern populations. The morphology of the living counterpart is so similar to the prehistoric predecessor that difficulty may be encountered in even differentiating modern from prehistoric species. Such is the case with the gar fish. The present beautifully preserved specimen, the species of which is sometimes referred to as the simplex gar, is one of the largest for this species yet known, measuring a magnificent thirty inches in length. It exhibits the characteristic ganoid (shiny, hard), diamond-shaped scales and medium length skull displaying many sharply pointed teeth in the jaws. *Length of specimen measuring 30in, matrix measuring 12 3/4 x 33 1/2in*

**\$10,000 - 14,000**



1092

1092<sup>w</sup>

# **UNCOMMON TREE BRANCH WITH FISHES – WALL MURAL**

*Phareodus testis, Knightia eocaena (2),*

*Cockerellites liops*

*Eocene*

*Green River Formation, Fossil Butte Member, Wyoming*

An uncommon prehistoric branch distinguishes this aesthetically pleasing fossil mural, which also showcases a nice variety of fish species on attractive limestone matrix. The 51-million-year-old specimens represent both flora and fauna of a prehistoric lake system, which existed in what is now known as Southwestern Wyoming. Framed and fitted with a cleat system for ease of display on any wall of conventional construction. *Measuring 41 x 77in*

**\$8,000 - 10,000**



1093<sup>w</sup>

**LARGE, EXQUISITE PALM FLOWER –  
FRAMED MURAL**

*Sabalites* sp., *Knightia eocaena*

*Eocene*

*Green River Formation Wyoming*

Even more rare than fossil palm fronds, palm flowers are coveted for their arrestingly delicate details. The present exceptional specimen is unusually large, complete and aesthetically appealing. The preservation of the petiole (base of the stem) lends a tree-like elegance to this virtually complete palm flower, which imparts a three dimensional quality when viewed in low contrasting light. Framed in tropical walnut and fitted with a cleat system for ease of mounting on any wall of conventional construction. *Measuring 62 x 33in*

**\$20,000 - 30,000**



1093



1094

1094<sup>w</sup>

# **IMPRESSIVE FOSSIL PALM FROND – FRAMED MURAL**

*Sabalites* sp.

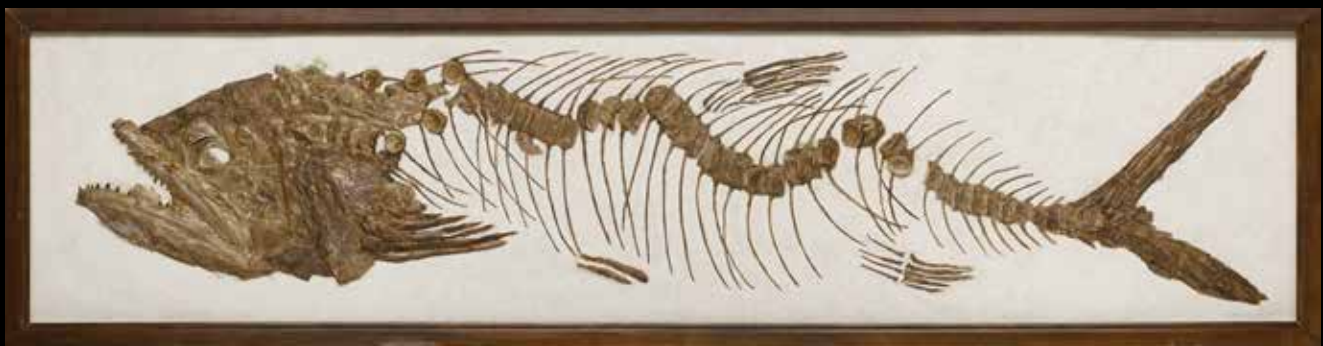
*Eocene*

*Green River Formation Wyoming*

A large 51-million-year-old fossil palm displays graceful natural composition and classic chocolate brown coloration within its limestone matrix. Known as one of the most aesthetically appealing types of fossils to be found in this geologic formation, the palm frond is considered a rare find due to the fragility of the fine cellulose of the leaf, which is subject to rapid decay. This is a superb specimen preserved in limestone which has been thinned to reduce weight. Framed in tropical walnut and fitted with a cleat system for ease of mounting on any wall of conventional construction. *Measuring 76 x 57in*

**\$50,000 - 65,000**





1096

1095<sup>w</sup>

### GIANT PREDATORY FISH

*Xiphactinus audax*

Cretaceous

Niobrara Chalk, Western Kansas

While dinosaurs roamed the landmasses, *Xiphactinus audax* - the largest of all the bony fish species - menaced the intracontinental seaway, which divided the western third of North America from the rest of the continent. The species' only enemies were the gigantic mosasaurs and sharks of the period. The massive skull and dagger-like teeth of the present specimen attest to its predatory habit. The superb skull, prepared in high relief, accentuating its massive teeth, makes an aesthetically interesting and dramatic wall mount. *Skull measuring 20in; matrix measuring 24 x 26in*

\$5,000 - 6,500

1096<sup>w</sup>

### IMPRESSIVE PREDATORY FISH

*Pachyrhizodus* sp.

Cretaceous

Smoky Hill Chalk, Western Kansas

This piece represents one of the classic fish species from the Cretaceous inland sea of North America, which divided the continent in two during the *age of dinosaurs*. The intracontinental seaway teemed with monstrous fishes, exemplified by the present impressive specimen. This example is a very well preserved specimen prepared and mounted for wall display. *Fish length measuring 66in; overall 72 x 18 3/4in*

\$10,000 - 14,000



1095



1097



1098

1097<sup>w</sup>

**SUPERLATIVE, LARGE GUITARFISH – PART AND COUNTERPART**

*Rhombopterygia cappetta*

Late Cretaceous

Hgula, Byblos, Lebanon

This astonishing Lebanese fish specimen displays numerous distinguishing features: soft tissue preservation, a part/counterpart presentation, exceptionally large size, rarity and excellent preservation set it in its own class, in both decorative and scientific terms. Fortuitously, the specimen was preserved along a cleavage plan of rock; when it was excavated, it split into two halves. Both halves exhibit soft tissue preservation in addition to amazing bone detail. Discovered in Hgula, this species has no living relative. The 100-million-year-old guitarfish genus represents the rhombic-shaped disk family, only slightly broader than long, with a squat tail approximately as long as the disc. The present example represents a remarkable rarity among Middle Eastern fishes. From a private European collection. (2) *Each measuring 31 x 22in*

**\$15,000 - 22,000**

1098<sup>w</sup>

**EXTINCT PREDATORY FISH**

*Pachycormus bollensis*

Early Jurassic

Posidonienschiefer Formation, Holzmaden, Germany

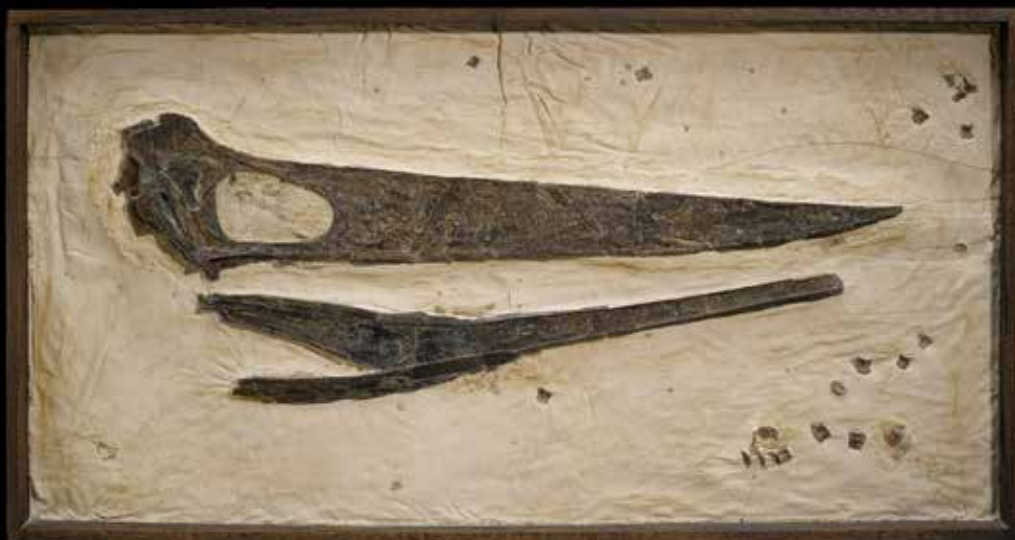
*Pachycormus* was a bony predatory fish from the Early Jurassic.

Though its body shape resembled that of a tuna, it belongs to an extinct group of fishes with no living relatives. Like the modern tuna, however, it was a fast swimmer and lived in the open ocean.

*Pachycormus bollensis* grew to over three feet in length. The fine preservation of the skull and fins add to the beauty of this fine example of a 180-million-year-old fossil fish. *Specimen measuring 28in; overall measuring 36 x 22 x 3/4in*

**\$10,000 - 13,000**





1099



1100

1099<sup>w</sup>

#### THE TANKING- DAVIS PTERANODON SKULL

*Pteranodon sternbergi*

Late Cretaceous

Niobrara Formation, Gove County, Kansas

Possibly the finest *Pteranodon sternbergi* skull to have been discovered, this specimen has been studied intensively by Dr. Christopher Bennett, a world-renowned paleontologist at the University of Kansas. It was found on private, leased property. As is typical in specimens from the Niobrara Formation, the specimen is embedded in a mixture of natural matrix and plaster due to the friable nature of matrix in this locality.

*This lot is accompanied by a Statement of Property Provenance and Propriety, a restoration diagram, photographs and other pertinent documents. Measuring 41in*

**\$50,000 - 60,000**



1100

1100

#### EXTRAORDINARY JUVENILE PTEROSAUR

*Pterodactylus antiquus*

Late Jurassic

Solnhofen, Germany

Pterosaurs, which belong to the order Pterosauria, were flying reptiles, not winged dinosaurs, though they co-existed with the dinosaurs until the end of the Cretaceous and became extinct at the same time. 130 valid genera, including *Pterodactylus*, are included in this order, but *Pterodactylus antiquus* is the best known. Scientific understanding of the appearance of this small flying reptile developed radically in 1998 with the discovery of soft tissue impressions on a well-preserved specimen which displayed a soft tissue crest on the back of its head, keratin sheaths on its clawed, webbed feet and hair-like fur. The present extraordinary specimen – a juvenile – is from the famous lithographic limestone of Solnhofen, Germany. Specimen measuring 2 1/4 x 3 3/8in; matrix measuring 9 3/4 x 11in

**\$75,000 - 90,000**



1101<sup>w</sup>

# **INCOMPARABLE FEATHERED BIRD – A NEW DISCOVERY**

*Limnofregata hasegawai*

*Eocene*

*Green River Formation , Fossil Butte Member, Wyoming*

Boasting a breathtaking five-foot wingspan, this specimen is one the largest known articulated fossilized frigate birds to have been discovered in North America. Unearthed in the summer of 2016, the specimen has been meticulously prepared to reveal marvelous feathers as well as the beautifully preserved bones of the skeleton. Very few fossilized examples of this extinct bird genus have been found articulated, yet this example is remarkably complete. The largest visible feather measures an amazing five inches. The magnificent specimen was entombed in the silt of a prehistoric lake and fossilized in a pose evoking images of the bird landing on an ocean beach.

Birds of the genus *Limnofregata* resembled modern frigate birds, but displayed shorter, less hook-like bills and longer legs. Living in a 51-million-year-old freshwater lake environment, which existed in what is now Southwestern Wyoming, the present individual would have fed on small vertebrates and probably harassed other shorebirds for food. Framed in angular steel and fitted with a cleat system for ease of mounting on any wall of conventional construction. *Presentation measuring 53 x 26in*

**\$125,000 - 165,000**









1102<sup>w</sup>

**GIANT EGG FROM AN EXTINCT BIRD SPECIES**

*Aepyornis maximus*

*Pleistocene*

*Madagascar*

This amazing eggshell belongs to the Giant Elephant Bird of Madagascar, *Aepyornis maximus*, which was a giant, flightless bird characterized by thick legs and vestigial wings. Analysis of complete preserved skeletal specimens indicates that these birds may have reached heights in excess of ten feet. The present rare specimen is quite large and nicely preserved. The ivory patina'd surface exhibits only the slightest abrasion from weathering, and its overall condition is very good. The shell appears to have been reassembled from a single egg with two large and approximately eight smaller fragments. A small hole (approximately 5/8 x 1/8 inches) is visible on one side. No mineralization or impurities are visible, despite having been buried for a considerable time.

*Aepyornis maximus* produced the largest known bird egg, and may be the largest egg ever produced by any animal with respect to volume. Analysis of *Aepyornis* specimens of similar dimensions suggests that, when first laid, the egg may have held the equivalent of 8 quarts. This volume roughly equals to 170 chicken eggs, weighing as much as 26 pounds. Only large theropod dinosaurs produced longer eggs.

The vast majority of *Aepyornis maximus* eggs are recovered from sand dunes bordering the sea. As the forests diminished, so did the number of these colossal birds. The hunting of these birds for food also contributed to their population decline, as evidenced by findings of burned bones. These two factors resulted in the complete extinction of these harmless birds, whose enormous size makes them one of the wonders of nature. *Height measuring 12 1/2in; circumference measuring 30in*

**\$25,000 - 35,000**

1103  
No lot

1104<sup>w</sup>

**EXCELLENT TORTOISE SHELL**

*Stylomys nebrascensis*

*Oligocene*

*South Dakota*

Most of the turtle shell specimens recovered from the White River Badlands are mere fragments. This magnificent shell of an Oligocene tortoise is intact and fully inflated. An indisputably fine specimen. *Measuring 17 x 15in*

**\$1,000 - 1,500**

1105<sup>w</sup>

**LARGE OLIGOCENE TORTOISE**

*Stylomys sp.*

*Oligocene*

*White River Formation, South Dakota*

The first fossil genus of dry land tortoise, *Stylomys* lived throughout temperate to subtropical areas of North America, Europe and Asia. Many fossil turtle shell specimens from the White River Badlands are found only in fragments. The present specimen includes a large shell, skull and two leg bones. *Measuring 30 x 21 x 7in*

**\$1,500 - 2,000**

1106<sup>w</sup>

**VERY LARGE FOSSIL BADLANDS  
TURTLE**

*Stylomys nebrascensis*

*Oligocene*

*White River Formation, South Dakota*

*Stylomys nebrascensis* was a 30-million-year-old turtle species of the White River Formation, located in the *badlands* of South Dakota. The present example is one of the largest ever offered at auction. The remarkable preservation of the white outer carapace is a distinguishing feature. Excellent preservation is also seen on the underside of the turtle, the plastron, which was formed by bony plates, and in several white leg bones, which are buried in the matrix. *Measuring 15 x 12in*

**\$2,000 - 2,500**

**To be sold without reserve**



1104



1105



1106



1107

1107<sup>w</sup>

# **UNCOMMON TURTLE CARAPACE IN MATRIX**

*Apalone ferox*

*Pliocene-Pleistocene*

*Columbia County, Florida*

A very attractive display piece composed of an intact carapace of an uncommon turtle species with nicely contrasting fossil crustaceans. *Specimen length measuring 10 1/2in; matrix measuring 22 1/2 x 19 x 47in*

**\$4,500 - 6,500**

1108<sup>w</sup>

# **EARLY AMPHIBIAN WITH SKIN IMPRESSIONS**

*Actinodon*

*Permian*

*Odernheim Pfatz, Germany*

All fossils of the early amphibians are rare and found in only a few locations in the world. Even more rare are fossil amphibians displaying skin impressions. The finest fossil amphibians come from a site closed to collecting for many years, in the Odernheim Pfatz in Germany. The present sizable 280-million-year-old amphibian, *Actinodon*, displays amazing preservation, an excellent dimensional skull with several sharp teeth, parts of all four legs and some skin impressions on the body. *Specimen length measuring 9 1/2in; matrix measuring 17 x 11in*

**\$2,000 - 2,500**

**To be sold without reserve**

1109<sup>w</sup>

# **CATORHINUS REPTILE MOUNTED**

*Mounted Primitive Reptile*

*Captorhinus magnus*

*Permian*

*Arroyo Formation, Lawton, Oklahoma, USA*  
Known as a stem reptile, *Captorhinus magnus* was one of the very first reptiles that laid its eggs on dry land; later branches led to the appearance of the dinosaurs. The 270-million-year-old bones of the present specimen were found in the Arroyo Formation of Oklahoma, and represent a catastrophic natural event which killed hundreds of these reptiles at one time. Expert cleaning and mounting has produced an impressive specimen displaying excellent detail, particularly in the formidable skull, which is presented open to show the rows of tiny, sharp teeth and the mysterious small round hole in the center of the skull (paleontologists speculate that this feature may have allowed sunlight to enter the skull to the pineal gland.) Another distinction of the preparation is that the ribs have been cemented to the matrix, adding stability to the very delicate bones while conveying the illusion that the strange reptile is crawling over the matrix. *Measuring 17in; skull measuring 3 1/2 x 2 1/2in; mount measuring 18 x 9in*

**\$3,500 - 4,200**



1108



1109





1110

1110<sup>w</sup>

# **SPLENDID EOCENE TURTLE**

*Hummelichelys guttata*

*Eocene*

*Green River Formation Wyoming*

An extremely rare specimen from the famous 18-inch layer of the Green River Formation in Wyoming. The species is best distinguished from other *Fossil Butte Member Trionychids* by its more elongated shell, the narrow nuchal that is well connected to the remaining carapacial disk. In the present specimen, the plates from the underbelly (plastron) are seen as well as the upper shell (carapace) with excellent definition of the raindrop-like ornamentation. The individual lived 51 million years ago in a subtropical lake environment teeming with fishes, birds, insects and even palm trees. A renowned lagerstatte - an accumulation of fossils representing an entire ecosystem, the geologic formation is known for superb preservation. *Specimen measuring 6 1/4 x 5 1/2in; matrix measuring 12 x 9 1/2in*

**\$25,000 - 35,000**

1111

# **JUVENILE TURTLE – PART AND COUNTERPART**

*Chisternon undatum*

*Fossil Butte Member, Green River Formation, Lincoln County, Wyoming*

This turtle is from the extinct family *Baenidae*, which comprises about twenty species. Only two species have been found in the Fossil Butte Member of the Green River Formation. *Positive/negative* presentations are the result of the fortuitous discovery of a fossil on a rock's cleavage plane, leaving portions of the same fossil on two surfaces. This baby individual displays a carapace (shell), which has not yet developed. Turtles are very rare in the Green River Formation; juveniles of this species are known by approximately twelve complete specimens originating from the near shore deposits located on Dempsey Ridge in Lincoln County, Wyoming. This is a superb example of both beauty and scientific appeal. *Specimen measuring 4 1/8in. Positive portion of matrix measuring 5 1/2 x 8 1/2in; negative portion of matrix measuring 5 3/4 x 7in*

**\$10,000 - 12,000**



1111



1111





1112

1112

**GERMAN TREE SNAKE - UNDESCRIBED SPECIES**

*Undescribed Species*

*Eocene*

*Messel, Germany*

The recovery of fossilized snakes is an uncommon occurrence, making the discovery of a finely articulated complete specimen, such as the present offering, a covetable find.

Fossils from the Messel Shales, a UNESCO World Heritage Site, are embedded in resin due to the friability of the natural matrix in which they are found. They are prepared using the transfer method, which was specifically developed in the 1970's to preserve specimens from this location. *Specimen length measuring 3 1/2in; overall 5 1/4 x 4 1/4in*

**\$5,000 - 6,500**

1113

**UNCOMMON GERMAN TURTLE**

*Allaeochelys crassesculptata*

*Eocene*

*Messel Oil Shale Pit, Germany*

The rarity of this pig-nosed turtle species, the large size of this specimen and the completeness of the well-preserved skull make this piece an uncommon find.

The prehistoric Messel Lake is considered a lagerstatte, an accumulation of fossils representing an entire ecosystem. The famous historic site is now a UNESCO World Heritage Site. Fossils from the Messel Shales are embedded in resin due to the friability of the natural matrix in which they are found. They are prepared using the transfer method, which was specifically developed in the 1970's to preserve specimens from this location. *Specimen length measuring 11in; overall 15 1/4 x 12 1/4 x 1/2in*

**\$6,000 - 8,000**



1113



1114<sup>w</sup>

# **KANSAS MOSASAUR SKULL**

*Mosasaurus Platycephalus*

*Cretaceous*

*Nebraska Chalk, Western Kansas*

A fine skull, with original cervical vertebrae, is presented in the original position as found. Beautifully prepared, the 80-million-year-old specimen was discovered in Western Kansas. Mosasaurs possessed double-hinged jaws and probably shared a common ancestor with snakes. This attribute allowed the carnivore to consume prey of massive size, mercilessly immobilizing its victim by use of two rows of pterygoid teeth located at the back of its mouth. The species, *platycephalus*, was discovered and named in 1871 by Othniel Marsh during the Yale expedition along the banks of the Smoky Hill River. Here is a rare opportunity to acquire an exceptional and fascinating marine reptile skull. *Skull measuring 22in; matrix measuring 37 x 18in*

**\$10,000 - 12,000**





1115<sup>w</sup>

# **SUPERB EOCENE CROCODILE**

*Borealosuchus wilsoni*

*Eocene*

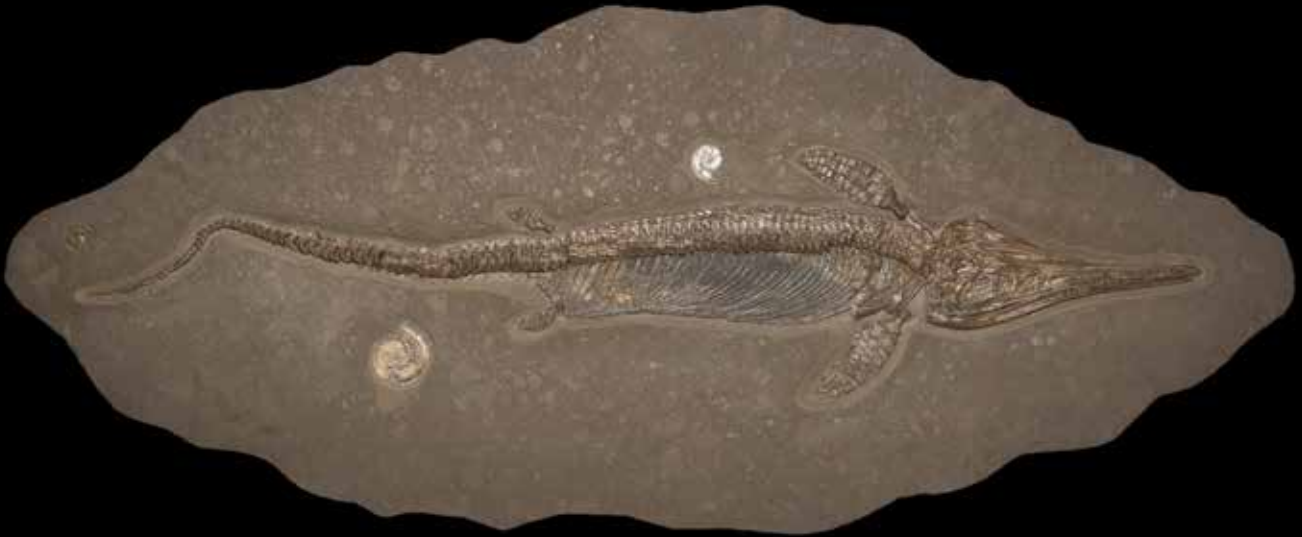
*Green River Formation, Lincoln County, Wyoming*

Fossils from the *Green River Formation* are world famous for their quality and diversity. Rare among the exceptional specimens that have been quarried over the past one hundred years are the crocodylians. Complete individuals are known only by a handful of specimens. In Southwestern Wyoming, a subtropical environment existed during the Early Eocene, with rivers and streams flowing into ancient *Fossil Lake*, approximately 52 million years ago. The largest crocodiles were the apex predators of this freshwater lake system.

Recently discovered, in the summer of 2016, the present specimen is arguably one of the finest ever found. Not only is it very well articulated, it also exhibits the contents of the stomach along with numerous *gastroliths* (stomach stones.) The dramatic presentation of the fossil, in original matrix, displays superb dimensionality and creates a visually stunning impact.

*Measuring 72 x 39in*

**\$250,000 - 350,000**



1116<sup>w</sup>

**EXTINCT MARINE REPTILE**

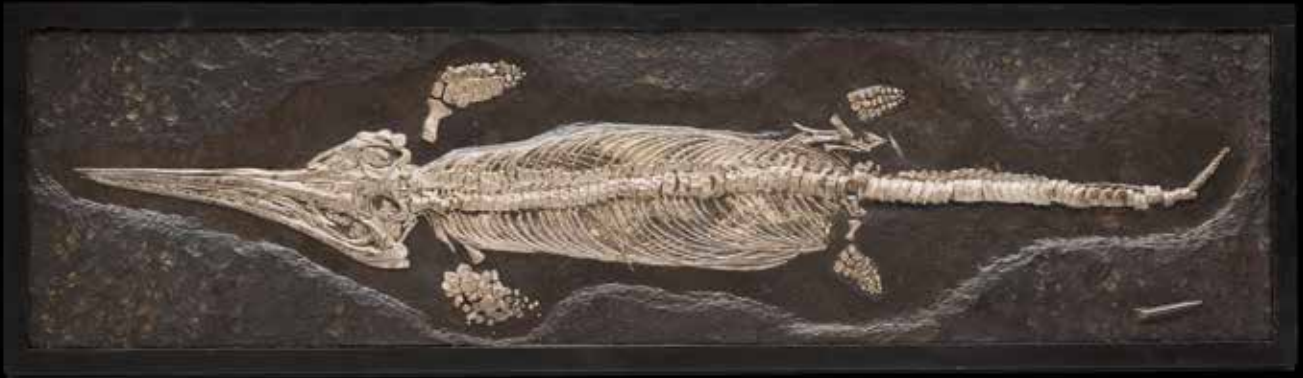
*Stenopterygius quadriscissus*

*Early Jurassic*

*Posidonienschiefer Formation, Holzmaden, Germany*

*Stenopterygius quadriscissus* was an ichthyosaur, an extinct live-bearing animal which displayed a body shape closely resembling today's fast-swimming fishes, such as the tuna and the dolphin. Gorgeous preservation of the finest details distinguishes the present specimen - an impressive and covetable piece which would be at home in any museum's vertebrate collection. The rich, dark shale of the Holzmaden locality is so beautiful that it is often used as tabletops and flooring, and can even be seen in centuries-old castles as roof tiling. *Measuring* 78 1/2in x 32 x 1in

**\$40,000 - 50,000**



1117<sup>w</sup>

**EXCEPTIONAL JURASSIC REPTILE WITH PRESERVED STOMACH CONTENTS**

*Stenopterygius quadriscissus*

Early Jurassic

Poisdonienschiefer Formation, Holzmaden, Germany

From an old German collection, this beautifully preserved and articulated ichthyosaur specimen exhibits several rare attributes. The presence of stomach contents, which can be clearly seen in this specimen, is exceedingly rare in vertebrates. Its dorsal presentation (as though seen from above) allows all four paddles to be clearly visible, which is not typically seen in ichthyosaur specimens.

Ichthyosaurs are important in the field of evolutionary biology. Their fossils help demonstrate vertebrate adaptation from aquatic origins to terrestrial life and back to aquatic existence over millions of years. Of all known reptiles, ichthyosaurs were most completely adapted to their environment, filling the same ecological niche as today's dolphin.

Preparation of fossils from this locality is particularly labor intensive. Because the densities of the fossil material and the matrix are so similar, preparators must exercise great care when removing the matrix.

Offered in a black metal frame, which can be displayed either horizontally or vertically.

Measuring 73 x 22 x 1.5in

**\$45,000 - 55,000**





1118<sup>w</sup>

# **PRIMITIVE JURASSIC CROCODILE**

*Steneosaurus bollensis*

Early Jurassic

Poisdonischiefer Formation, Holzmaden, Germany

Teeming with marine life during the Early Jurassic Period, 200 to 146 million years ago, in the area now known as Germany, the warm shallow seas supported apex predators such as ichthyosaurs, plesiosaurs and the primitive crocodile, *Steneosaurus bollensis*.

The skull of *Steneosaurus* was very light and narrow compared to modern crocodiles, with large openings and a long, narrow snout. The nostrils were at the tip of the snout and connected to the throat by a long bony tube. Evidencing its carnivorous habit, it possessed countless sharp teeth, which were probably used to prey upon fish. A successful genus, *Steneosaurus*, ranging through South America, Europe and North Africa.

From an old German collection, the present 180-million-year-old *Steneosaurus bollensis* - a rare specimen - is meticulously prepared. It is exceedingly well preserved, particularly in the tail portion. *Measuring 99 x 22 x 2in*

**\$50,000 - 70,000**



1119<sup>w</sup>

**TRIPLE CRINOID**

*Seiocrinus subangularis*

*Lower Jurassic*

*Posidonienschiefer Formation, Holzmaden, Germany*

The Posidonienschiefer Formation is known as a fossil lagerstatte, an accumulation of fossils representing an entire prehistoric ecosystem. Exceptional natural composition and very fine preservation distinguish this plate displaying three crinoid specimens. Subtly shimmering pyrite imparts a glowing presence to these fossilized animals, which are plant-like in appearance. These sea lilies would have floated, attached to a piece of driftwood, as they filter-fed in the warm Jurassic sea.

Arduous laboratory preparation is required to reveal fossils from this locality from their surrounding matrix, which is similar in density to the fossils themselves. The present subtly shimmering crinoids are beautifully contrasted against the matte black shale matrix of this locality. *Measuring 64in x 37 1/2 x 1in*

**\$35,000 - 45,000**

1120

No lot

1121<sup>w</sup>

**TWO IRON METEORITES - END CUT AND COMPLETE INDIVIDUAL**

*Iron-Nickel, Fine Octahedrite*

*Gibeon*

*Great Nama Land, Namibia, Africa*

Two iron meteorites representing the famed Gibeon Fall: A large end cut specimen with three cut faces which have been polished and etched, revealing the fine *Widmanstätten* pattern, and a complete individual. (2)

*Specimens measuring 6 x 5 x 3 3/8in and 4 1/4 x 4 1/2 x 2 3/8in respectively; specimens weighing 16.6 pounds and 2,826 grams respectively*

**\$2,000 - 2,500**



1121



1122

1122<sup>w</sup>

# **GIBEON METEORITE – POLISHED AND ETCHED SLICE**

*Nickel-Iron, Fine Octahedrite*

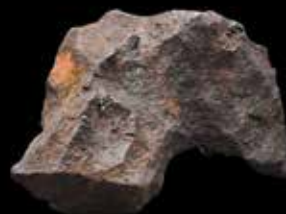
*Great Nama Land, Namibia, Africa*

Meteorites are among the most rare materials in existence on our planet, and iron meteorites are rarer still, comprising roughly one in seven of all known specimens. Displaying the captivating, radiant beauty of an iron meteorite's internal structure, the present polished and etched specimen, from the famous locality in Namibia, reveals an aesthetic quality normally hidden in the lump-like nickel-iron masses typically recovered from this area. Known as *Widmanstätten patterning*, the crystalline structures distinguish extraterrestrial metals from those of Earthly origin. In recent times, local Namibian tribesmen have located Gibeon specimens with the aid of metal detectors, a modern improvement over methods of their ancestors who fashioned recovered specimens into spear-points and other tools. The present specimen is polished and etched on one side, and polished on the opposite side. *Weighing 16.6 pounds; measuring 17 x 12 1/2 x 1/2in*

**\$6,000 - 8,000**



1124



1123



1123<sup>w</sup>

# **TWO IRON METEORITES**

*Canyon Diablo*

*Iron-Nickel, Coarse Octahedrite*

*Meteor Crater, Coconino County, Arizona*

Beautiful sculpted *regmaglypts* recommend these two iron meteorites.

(2) *Specimens measuring 5 x 3 x 1 1/2in and 4 x 2 1/2 x 2 1/4in respectively; specimens weighing 933 grams and 830 grams respectively*

**\$1,800 - 2,200**

1124<sup>w</sup>

# **LARGE CANYON DIABLO METEORITE**

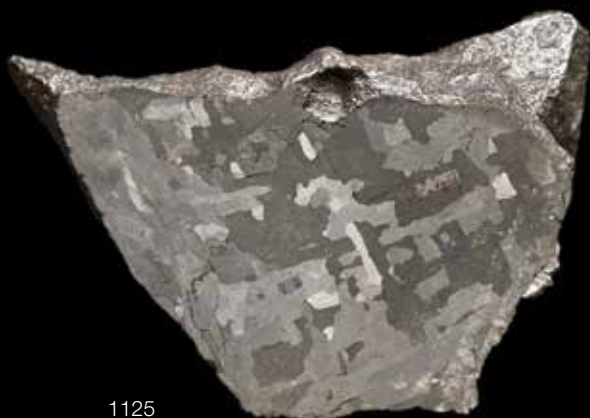
*Iron-nickel*

*Meteor Crater, Winslow, Arizona*

From a private collection, this large Canyon Diablo specimen of just over 7 kilos, represents one of the more sought-after meteorites by collectors. Any sizable specimens are now difficult to find as the area around Meteor Crater near Winslow, Arizona has been closed for years. Most currently available Canyon Diablo meteorites are a mere 100-200 grams in weight. Meteor Crater, which measures nearly one mile in diameter, was created over 50,000 years ago when a meteor, measuring approximately fifty feet in diameter, exploded high over the Arizona desert. Characteristic of specimens from the fascinating site, the present specimen displays an attractive gunmetal color and a pleasing shape. Also seen are several large, distinctive *regmaglypts* (thumbprints), formed as the meteorite became molten in Earth's atmosphere. The present specimen has numerous *regmaglypts*, a deep scoop to the center and a flange to one side which resembles the beak of a bird. With all of these rugged characteristics, large size and excellent patina this is an excellent choice for the collector of aesthetic iron meteorites. *Weighing approximately 7032 grams and measuring 8 3/4 x 8 x 5 3/4 in*

**\$4,000 - 6,000**





1125



1126



1127

1125

**CAMPO DEL CIELO METEORITE – END CUT**

*Iron-Nickel, Type 1A, Course Octahedrite  
Gran Chaco, Argentina*

The famous iron-nickel meteorite, Campo del Cielo, fell to Earth over 4,000 years ago in the mountainous region of Gran Chaco, Argentina, in one of the largest and undoubtedly most dramatic falls in the last 10,000 years. The present specimen has been polished and etched on one side to show the beautiful course octahedrite Widmanstätten pattern, a pattern that is diagnostic of meteorites. The exterior surface of the specimen boasts desirable regmaglypts and fusion crust, features that formed during the meteorite's violent descent through Earth's atmosphere. *Weighing 11.5 pounds; measuring 5 1/2 x 4 x 3 3/4in*

**\$2,000 - 2,500**

1126

**CAMPO DEL CIELO METEORITE**

*Iron-Nickel, Type 1A, Course Octahedrite  
Gran Chaco, Argentina*

The best quality *Campos*, such as this splendid specimen, were recovered high in the mountains where their surface was not rusted away by ground water. This specimen is aesthetically shaped and covered with desirable regmaglypts. Regmaglypts formed when the meteor passed through Earth's atmosphere and the troilite in the meteorite melted. An interesting feature is that most of the regmaglypts are on one side, indicating a certain amount of orientation as this meteorite burned through the atmosphere before hitting the ground. Offered with a metal display stand. *Weighing 28.5 pounds; measuring 11 1/2 x 7 x 3in*

**\$2,500 - 3,200**

1127

**HENBURY METEORITE – COMPLETE INDIVIDUAL**

*Iron III AB*

*Northern Territory, Australia*

Henbury is one of five meteor impact sites in Australia associated with actual meteorite fragments from one of the world's finest preserved examples of a small crater field. Discovered in 1899 by the manager of Henbury Station, the craters went uninvestigated until interest was stirred when the Karoonda meteorite fell on South Australia in 1930. The present specimen is a complete aesthetically shaped individual with numerous *regmaglypts* visible from all sides. *Weighing 4,540 grams; measuring 10 x 4 3/4 x 3 1/8in*

**\$12,000 - 15,000**

1128<sup>w</sup>

**HENBURY - ZOOMPORPHIC  
ELEPHANTINE METEORITE**

*Iron IIIAB - Medium Octahedrite*

*Henbury, Northern Territory, Australia*

Though more than one dozen distinct meteorite craters have been documented in the famed Henbury strewnfield (the elliptical area in which a meteorite shower is strewn across Earth's surface), the whimsical shape of this unique specimen makes it a rare find. Scientifically termed *gnathoid*, or jaw-shaped, the richly patinated specimen gives the appearance of an elephant's profile. Countless desirable regmaglypts - the aerodynamic flight markings which are diagnostic of a freshly fallen meteorite - are present. First discovered in 1931 following reports of metal stones by Aborigines, the Henbury meteorite shower occurred approximately 5,000 years ago. The present example is an extraordinary Henbury specimen, not only very large, but uniquely beautiful. *Weighing 12,031 grams; measuring 380 x 190 x 115 millimeters*



1128

**\$25,000 - 50,000**

1129

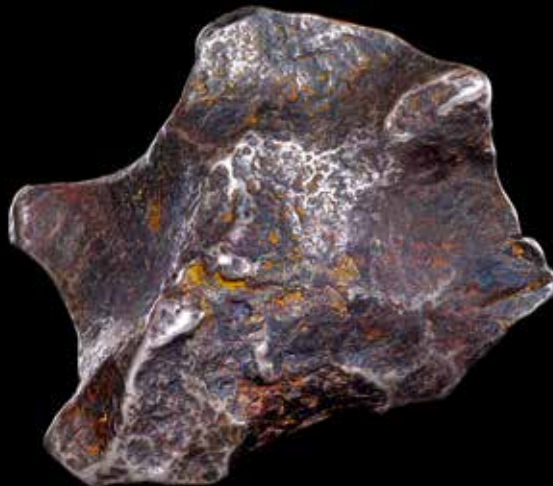
**SIKHOTE-ALIN METEORITE - COMPLETE  
SPECIMEN**

*Sikhote-alin*

*Iron 11AB, Coarse Octahedrite*

*Maritime Territory, Russia*

*Sikhote-Alin* was a rare witnessed fall, on Feb 12, 1947, resulting in craters surrounded by torn and damaged trees felled and broken by the rain of the nickel-iron celestial visitors. Here is an opportunity to own a fascinating specimen from this historic meteorite fall. *Weighing 212 grams; measuring 2 1/2 x 2 x 1 1/4 in*



1129

**\$700 - 900**

1130

**SIKHOTE-ALIN METEORITE WITH  
REGMAGLYPTS**

*Iron-Nickel*

*Siberia, Russia*

This Sikhote-Alin meteorite is the rarer of the two types, possessing regmaglypts, small crater-like impressions formed by ablation of troilite as the meteorite streaked through the sky at high temperatures. Having fallen on February 12, 1947 in Siberia, Sikhote-Alin meteorites are the best preserved of all known iron-nickel meteorites. The present specimen is completely covered with regmaglypts of various sizes and displays a beautiful overall shape. It is quite rare to find such a large aesthetic specimen as the strewnfield has been thoroughly searched; only small specimens are currently discovered. *Weighing 842 grams; measuring 3 x 3 1/4 x 3 in*



1130

**\$5,000 - 7,000**



1131

1131

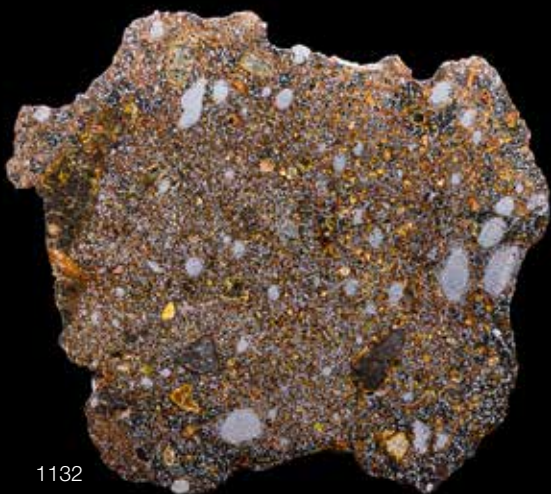
**LARGE SIKHOTE-ALIN METEORITE WITH REGMAGLYPTS**

*Iron-Nickel*

*Siberia, Russia*

This Sikhote-Alin meteorite is the more rare of the two types, possessing regmaglypts, small crater-like impressions formed by ablation of troilite as the meteorite streaked through Earth's atmosphere at high temperatures. The large meteorite body broke up twice during its fall to Earth; only the higher breakup created meteorites with regmaglypts, the lower breakup produced shrapnel-type meteorites. Having fallen in modern times (on Feb. 12, 1947), Sikhote-Alin meteorites are the best preserved of all known iron-nickel meteorites. The present excellent specimen, replete with regmaglypts, is very large and aesthetically pleasing. Seldom is such a large specimen available, as Sikhote-Alin's strewnfield has been investigated thoroughly; only small specimens are currently found. *Weighing 8 kilograms; measuring 10 x 5 x 3in*

**\$18,000 - 22,000**



1132

1132

**NWA 8741 COMPLETE SLICE**

*Mesosiderite*

*Northwest Africa 8741*

Found in 2014, this meteorite is composed of a silicate matrix (71.8%) and metal (28.2%). The silicate matrix is medium-grained rock of poikilo-ophitic texture. The present specimen is a large complete slice with fusion crust on all edges. Both faces are polished to a high sheen. *Weighing approximately 281.8 grams and measuring 6 1/4 x 7 1/4 x 1/8in*

**\$2,500 - 3,500**



1133

1133

**ETTER STONE METEORITE - POLISHED SLICE ORIGINALLY FROM THE H.H. NININGER COLLECTION**

*Chondrite H6, Olivine Bronsite*

*Moore County, Texas*

Etter Stone was first discovered in 1965, in a rock pile, after framers had cleared their lands of stones and piled them at the end of their fields. After the news of the meteorite discovery spread, three more specimens were found. The largest was unearthed during the excavation of a water storage pond. The present specimen is from a private California collection and was originally owned by *H. H. Nininger*, the famous American meteoriticist. *Nininger Collection number H.47.186* appears on the edge of the slice. One side has been polished. *Weighing 2,300 grams; measuring 11 3/4 x 6 7/8 x 5/16in*

**\$4,000 - 6,000**



1134

# **PARTIAL SLICE OF THE MOON — NWA 10309**

*Lunar Feldspathic Breccia – Achondrite (LUN) Sahara Desert, North West Africa*

NWA 10309 is the 10,309th meteorite to be recovered from the North West African grid of the Sahara Desert and analyzed by scientists—whose work was then vetted by other scientists with membership in the Meteoritical Society. NWA 10309 is a piece of the Moon that was ejected off the lunar surface following an asteroid impact prior to landing on Earth. The Moon is among the most exotic objects on Earth. Moreover, less than 0.1% of all meteorites recovered are lunar in origin; Lunar samples are readily identified by their highly specific geological, mineralogical, chemical and radiation signatures. The minerals comprising the Moon's crust are limited and the most common of Earth's minerals are not found on the Moon. Lunar specimens contain gases originating from the solar wind with isotope ratios that are markedly different than the same gases found on Earth (also as a result of cosmic radiation). NWA 8306 is a feldspathic breccia, rich with angular fragments of anorthosite. Solar wind vesicles, iron-rich pyroxenes and olivines have also been identified. The authentication work on NWA 8306 was done by Dr. Anthony Irving—one of the world's foremost experts in the identification of lunar and Martian meteorites. This sample of the Moon is accompanied by the scientific abstract documenting its classification. *Weighing approximately 25.74 grams; measuring 55 x 39 x 5mm (2.25 x 1.5 x 0.2 in)*

**\$5,500 - 7,500**

## **Provenance**

Macovich Collection of Meteorites.

1135

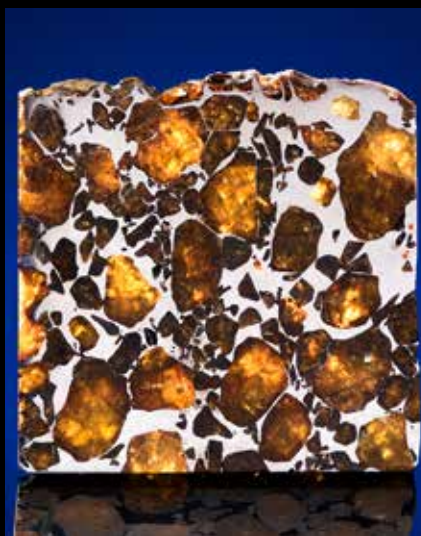
# **IMILAC METEORITE — BEDAZZLING PARTIAL SLICE WITH EXTRATERRESTRIAL GEMSTONES**

*PAL – Pallasite*

*Atacama Desert, Chile*

Comprising less than 1% of all meteorites, pallasites are the most dazzling of all. Pallasitic meteorites originate from the mantle/core boundary of what was a planetary body that broke apart during the formation of our solar system. The olivine and peridot crystals seen here are the result of small chunks of stony mantle becoming suspended in the molten nickel-iron of the core and then crystallizing during a long cooling process in the vacuum of interplanetary space. Pallasites are considered among the most beautiful extraterrestrial substance known and this is a select partial slice with one edge of fusion crust. *Measuring 62 x 60 x 4mm (2.25 x 2.25 x 0.15 inches) and x 5.75 x 0.1 inches) and 66.24 grams.*

**\$1,200 - 1,800**



1135

1136

# **RARE ATAXITE METEORITE – POLISHED AND ETCHED END CUT**

*Ataxite*

*Dronino, Russia*

Ataxites are a rare type of iron-nickel meteorite that do not exhibit a Widmanstätten pattern when they are etched, due to their high nickel content. Ataxites are known as ungrouped irons as they do not match the chemistry of any of the other iron-nickel group and most certainly come from a different planetary body than the other irons. Dronino was found by a Russian mushroom hunter in July, 2002 near the Russian village of Dronino. In the present specimen, the cut side has been polished and etched, exhibiting sulfide and chromite inclusions. The natural uncut end displays a bright gunmetal color with the characteristic ragged surface and small regmaglypts, which are typical of an aesthetic Dronino ataxite meteorite. *Weighing 1,383 grams; measuring 6.25 x 2.65 x 2in*

**\$2,000 - 2,500**

1137

# **SEYMCHAN METEORITE – POLISHED SLICE**

*Seymchan Pallasite*

*Seymchan, Magadan District, Eastern Russia*

Originally, Seymchan was believed to be composed only of iron-nickel, but later, olivine crystals were found in Seymchan specimens, re-classifying it as a far more rare pallasite. Pallasites are literally gemstones from outer space containing olivine crystals mixed in with the iron-nickel matrix. The present large slice displays more than fifty per cent olivine crystals and silicate inclusions in its iron-nickel matrix and has been polished to reveal the fascinating interior. Offered on a display stand. *Weighing 238.3 grams; measuring 4 1/2 x 3 1/2in*

**\$2,000 - 3,000**

To be sold without reserve



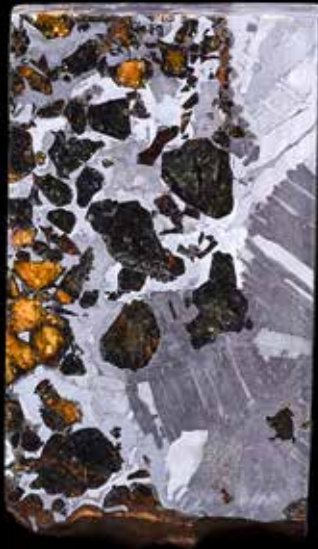
1134



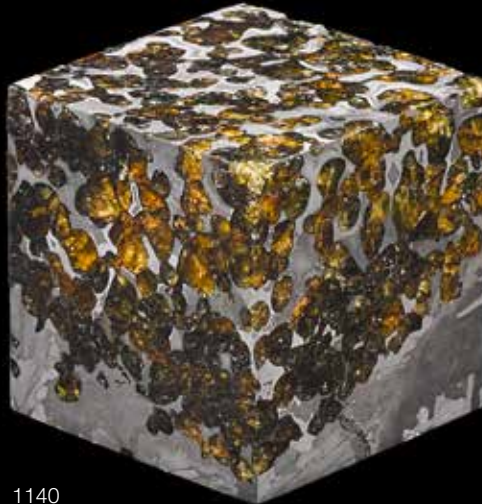
1136



1137



1138



1140



1139

1138

#### **SEYMCHAN PALLASITE END PIECE**

*Pallasite – PMG*

*Magadan District, Siberia, Russia*

Seymchan was originally found in the far-eastern region of Russia in the summer, 1967, by a geological survey party near the Hekandue River, in the Magadan District of Russia. The presence of Olivine crystals in Seymchan evidences its origin near the core/mantle boundary of a differentiated body (thought to be an asteroid – a small, rocky body that orbits the sun) which was destroyed during the formation of our solar system, approximately 5.5 to 6 billion years ago. Plentiful olivine crystals can be seen within the polished nickel-iron matrix of this specimen. The present specimen is etched to reveal the Widmanstätten pattern of crystallization. *Weighing approximately 622.1 grams; measuring 3 1/2 x 2 x 1 in*

**\$3,500 - 5,000**

1139<sup>w</sup>

#### **LARGE SEYMCHAN METEORITE SLICE**

Polished on one side and acid etched to reveal the typical Widmanstätten pattern. Reverse side unpolished. *Weighing approximately 2205 grams; measuring 19 x 11 1/2 x 1/8 in*

**\$3,000 - 4,000**

1140

#### **SEYMCHAN METEORITE CUBE**

*Pallasite – PMG*

*Magadan District, Siberia, Russia*

Seymchan was originally found in the far-eastern region of Russia in the summer, 1967, by a geological survey party near the Hekandue River, in the Magadan District of Russia. The presence of Olivine crystals in Seymchan evidences its origin near the core/mantle boundary of a differentiated body (thought to be an asteroid – a small, rocky body that orbits the sun) which was destroyed during the formation of our solar system, approximately 5.5 to 6 billion years ago. Plentiful olivine crystals can be seen within the polished nickel-iron matrix of this specimen. The present specimen is etched and polished to reveal the Widmanstätten pattern of crystallization. *Weighing 646.3; measuring 2 x 2 x 2 in*

**\$4,000 - 6,000**





1141

1141

**MUONIONALUSTA METEORITE – END CUT**

*Iron-Nickel – Fine Octahedrite*

*Norrbottn, Sweden*

Muonionalusta is an iron-nickel meteorite discovered in Norrbotten, Sweden in 1906. Classified as a fine octahedrite, it has one of the most beautiful Widmanstätten patterns of all meteorites, as exemplified by the present specimen. Widmanstätten patterns form when the two alloys of nickel kamacite and taenite separated in the iron core of the large asteroid that was destroyed by collision with another asteroid in the asteroid belt billions of years ago. This pattern occurs only when the iron core cools at a rate of just a few degrees per million years and is not found in any iron-nickel metals on Earth. The present large end cut has been etched on one side, displaying the gorgeous Widmanstätten pattern. The reverse side exhibits the original surface of the Muonionalusta meteorite with several distinguishing regmaglypts, desirable features which form during a meteorite's descent through Earth's atmosphere. Muonionalusta cut meteorite sections of this size are quite rare. *Weighing 20 pounds; measuring 11 ¾ x 6 ½ x 2 ½in*

**\$5,000 - 7,500**



1142

1142

**MUONIONALUSTA METEORITE – INCOMPARABLE COMPLETE SPECIMEN WITH DIMENSIONAL WIDMANSTATTEN PATTERN**

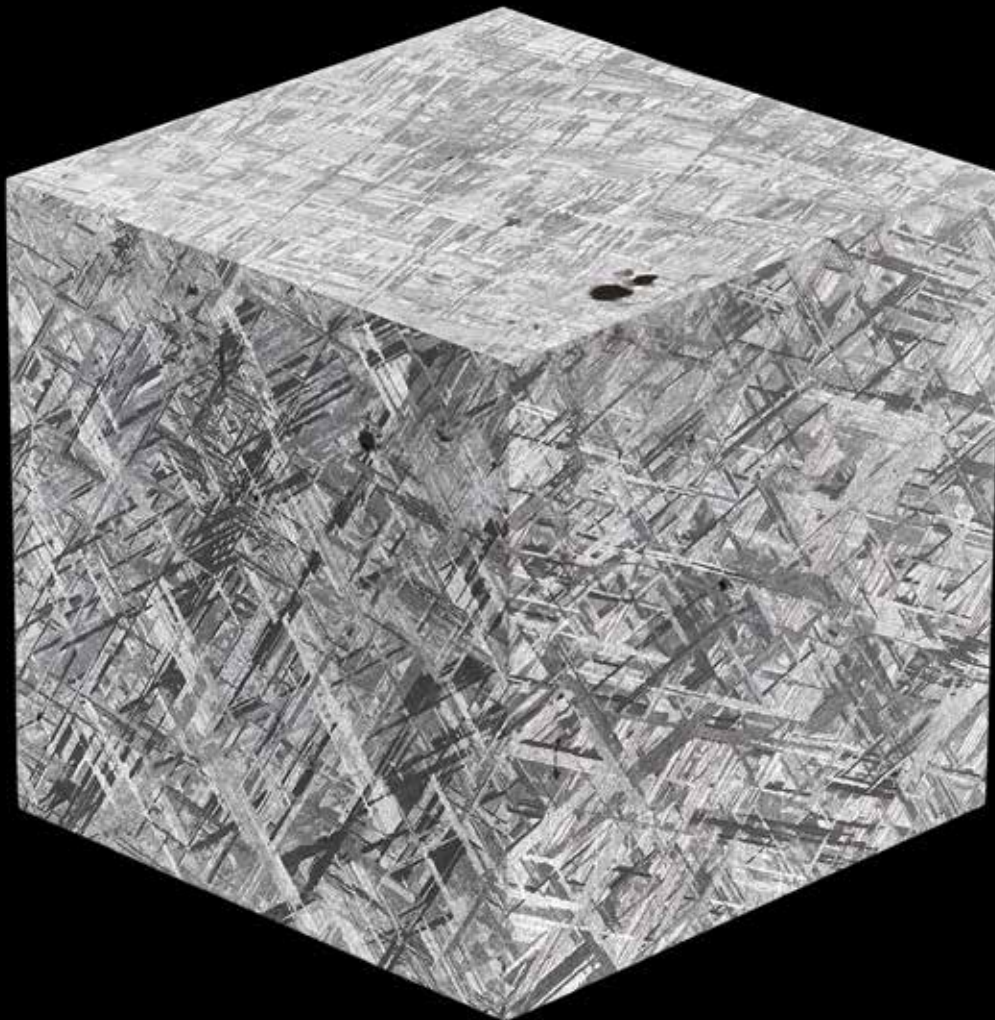
*Nickel-Iron – Fine Octahedrite*

*Norrbottn, Sweden*

The present spectacular, complete Muonionalusta meteorite has been laboriously sand blasted to display a unique three-dimensional Widmanstätten pattern. This presentation dramatically illustrates the process of a cubic taenite crystal structure transforming into an octahedrite crystal structure when kamacite grows on the eight corners of the taenite cube. The gunmetal colored meteorite shows numerous geometric structures formed at every angle. Here is a unique, spectacular meteorite, which illustrates what Widmanstätten patterns look like throughout the meteorite. *Weighing 31.38 pounds; measuring 10 x 7 x 4in*

**\$10,000 - 13,000**





1143

# **LARGEST METEORITE CUBE**

Muonionalusta Meteorite – Large Cube

*Iron, Fine (IVA) Octahedrite*

*Kiruna, Norrbotten, Sweden*

Dated to have impacted Northern Sweden approximately one million years ago, and initially discovered in 1906, this locality has become one of the best sites for fine octahedrite irons. Searches for the impact crater from the original shower near the Arctic Circle have been in vain, as several glacial periods have likely transported the meteorites away from the original strewn field. These meteorites are almost always found buried under several feet of glacial moraine, and require specialized metal detectors to be found at these depths. *Muonionalusta* is the first meteorite in which *stishovite* has been identified, a rare and extremely hard silicon dioxide polymorph of quartz, formed by very high shock pressure created by the hypervelocity of a meteorite impact, giving rise to the theory that the *Muonionalusta* impact was one of the most violent and direct impacts on this planet.

Offered is a large cube of *Muonionalusta*, exhibiting the classic *Widmanstätten* patterns in grids of shimmering shades of gray and silver, signifying the presence of two forms of nickel-iron, kamacite and taenite. The high nickel content galvanizes the iron to some extent, which has aided immensely in the meteorite's survival for nearly one million years under conditions highly favorable to rusting. Challenging recovery conditions make these specimens uncommon on the market. The present specimen is very large in size and possesses a fine etched pattern on all surfaces. *Weighing 12,255 grams; measuring 4 5/8 x 4 5/8 x 4 5/8in*

**\$20,000 - 30,000**



1144<sup>w</sup>

**LARGE AND IMPRESSIVE MUONIONALUSTA METEORITE END PIECE ON CUSTOM BASE**

*Iron - Fine Octahedrite*

*Kiruna, Sweden*

Originating from within the Arctic Circle, the first Muonionalusta meteorite was discovered in 1906 by a child who, while kicking rocks, struck a heavy, rusty object which was later identified as meteoritic. Muonionalusta meteorites are perfect for subdivision; within these typically weathered and shapeless masses lies an interior matrix that is breathtaking - a striking three-dimensional display of Muonionalusta's exceptional octahedral crystalline structure, as exemplified by the present specimen. A cooling curve of millions of years is required for the two major alloys of iron meteorites (kamacite and taenite) to crystallize, and this can only occur in the vacuum of outer space—which makes this resplendent pattern diagnostic in the identification of iron meteorites. *Weighing approximately 61.2 kilos (135 lbs) and measuring 15 x 11 1/2 x 7 in. Overall height with stand: 60in*

**\$100,000 - 150,000**





1145

1145<sup>W</sup>

# **FOSSIL FISH LIMESTONE TABLETOP ON BASE**

*Diplomystus dentatus, Mioplosus labracoides*

*Eocene*

*Green River Formation Wyoming*

An elegant limestone tabletop boasts natural fossil fish inclusions. The round tabletop surmounts a natural root base with metal legs. A sophisticated objet d'art, as well as functional piece, suitable for use as a chic coffee table. Diameter measuring 45 1/2in; height measuring 14in

**\$2,500 - 3,500**

1146<sup>W</sup>

# **UNIQUE GLASS-TOPPED INSECT DISPLAY TABLE BY CONTEMPORARY ARTIST MICHAEL KALISH**

Comprising 59 individual specimens from World localities which were identified as follows: Giant long horn beetle, *Titanus giganteus*, Brazil; long horn beetle, *Datocera pheryi*; grasshopper, *Maphyteus leprosus*; Ludekingi stag, *O.I. monticola*; Black buqueti stag, *H. buqueti*; Giant bellicosus stag, *O. bellicosus*; Brookeanus stag, *O. brookeanus*; Giant brown stag, *O-femorolis*; Eremicola stag, *O. eremicola*; Wallastoni stag, *O. wallastoni*; Giraffa stag, *C. giraffa*; giant deer-horn stag, *H. deyrollei*; Giant cicada; Blue cicada; Giant brown cicada, *Ponia imperatoria*; Elephant beetle, *Megasoma acteon*, South America; stick insect, *Phasmid*; scorpion: steely blue leg, *Pamphobeteus antinous*, Bolivia/Peru; three-horn rhino, *Chalcosoma caucasus*; spike-nosed lanternfly, *Zanna terminalis*; African dung beetle; moving leaf, *Phyllium giganteum*; flower beetle, *Goliathus goliatus*, Africa; a grasshopper; a butterfly, *Pinacopteryx eriphia*, a dung beetle, *Scarabaeus sennarensis*; ground beetle, *Ctonosta senegalensis*; long-tailed ant lion; splendid beetle, *Catoxanthe opulenta*. Glass top measuring 8 x 4 feet, thickness 1/2in. Table without glass: height 30in. Length 7 feet. width 40 3/4in. The table is made out of aluminum and has been painted white.

**\$25,000 - 35,000**

*Michael Kalish*

When Michael Kalish combined pop culture and Americana with the object of his fascination, the heretofore "lowly license plate" was elevated from the junkyard to the museum, from garages and highways to the living room wall. In the process, he became the artist responsible for creating a new genre, winning international acclaim, and setting his expectations-defying career into motion.

Out of the utilitarian and overlooked, Kalish fashions works of steely confidence, proudly displaying their wear, patina and rust as a tribute to that which endures. His license plate works include homages to America itself and to many of its most recognizable faces, capturing the likenesses of Marilyn, Elvis, The Beatles, and Mickey Mouse, all with a wink to pop masters such as Warhol and Lichtenstein. His roses, both framed and freestanding are made from automobile parts; their surprising voluptuousness led to solo exhibitions in Museums and Galleries in Stockholm, Geneva, Los Angeles, and New York. His giant abstracts, comprised of recycled classic car parts from the 50's and 60's, triumphantly declare their resurrections. His three-dimensional editions, constructed of high-gloss metal layers, playfully interact with viewers, affording unique experiences depending upon their vantage points.

Monumental outdoor installations by Kalish include: the historic Muhammad Ali tribute- "reALize"- wherein 1300 punching bags suspended 22-feet high conspire to form a three-dimensional rendering of the heavyweight champion's famous face, a series of two dozen towering pinwheels engineered on behalf of COPD awareness- exhibited at the Tampa Museum of Art, as well as "Raise The Caliber, a monumental public work made of reclaimed guns designed as a statement against violence, which is currently traveling the US.

Embraced by critics, dealers, and an impressive list of contemporary art collectors, Michael Kalish's original works are featured in a variety of important collections. His unique position as a preeminent arbiter of style and taste has led to features articles about him in People Magazine, The Wall Street Journal, The NY Times, Details, Wired, and ArtNews, as well as feature of stories on CBS Sunday Morning, CNN, E!, MSN and TLC. Most recently he served as the host of Discovery Channel's Final Offer.





146



146 (detail)



146 (detail)



1147

1147<sup>WY</sup>

# **FOLK ART DIORAMA OF BIRDS--"FREIWALDAU"**

By H. Wolf

Germany

Circa 1924

*Bombycilla cedrorum*, "Cedar waxwing"

The decade of the 1920s saw a variety of folk art handicrafts proliferate which made use of natural elements. This particular example incorporates a hand painted watercolor by a German artist depicting a wintery woodland scene with both coniferous and deciduous trees with red berries which serve as food for the birds. The two "birds" are adhered in the foreground although their claws are painted. The bodies are made from natural feathers to resemble jays and maybe of the species *Bombycilla cedrorum* or Cedar waxwing, a common European bird. The naturalistically rendered frame is made from carved and gessoed wood stained brown, signed lower left, H. Wolf and entitled *Freiwalddau* meaning "Forest Meadow" dated 1924. Measuring 22 x 18 x 2in

**\$600 - 800**

**To be sold without reserve**

Potential buyers should be aware that this item cannot be exported outside of the United States. Please contact the Natural History Department before bidding on this lot.



1148

1148<sup>W</sup>

# **PASSENGER PIGEON**

*Ectopistes migratorius*

Probably the most horrific story of the mass extermination of a species by humans is that of *Ectopistes migratorius*, known as the Passenger Pigeon. Once flourishing in North America in numbers estimated at 5 billion, early European settlers made reference to colossal flocks of the blue, long-tailed birds that were so immense that they darkened the skies. Reports describe flocks a mile wide flying overhead for four to five hours at a time during their migration from the south to their breeding areas in New England, New York, Ohio and the southern Great Lakes area. The demise of the species is linked to the development of the major east coast cities in the mid-nineteenth century. By 1855, 300,000 pigeons per year were sent to New York alone in a well-organized and sustained effort to provide cheap meat to the expanding human population. So extensive was the slaughter of these birds that by the late 1880s no more than a few hundred survived. In the 1890s the wild Passenger Pigeon died out and, in 1914, the last Passenger Pigeon died in captivity. The present specimen was professionally removed from a vintage diorama in order to present it in the current display case. Case measuring 19 3/4 x 14 3/8 x 8 1/2in

**\$7,000 - 9,000**

Potential buyers should be aware that this item cannot be exported outside of the United States. Please contact the Natural History Department before bidding on this lot.



1149



1150



1151



1152

1149<sup>w</sup>

#### **SCHOLAR'S ROCK ON WOODEN STAND**

Suitable for display on a tabletop or floor, having typical metallic sound when struck. The aesthetics of this specimen, with its various naturally pierced holes, create a contrast of positive and negative space. Raised on a carved wooden base consisting of two parts. *Measuring 20 x 15 x 7in*

**\$1,500 - 2,500**

1150<sup>w</sup>

#### **SCHOLAR'S ROCK ON WOODEN STAND**

A decorative midnight-black stone with undulating surface and an excellent horizon line. *Measuring 18 1/2 x 19 1/2 x 9in*

**\$1,000 - 1,500**

Offered on a custom-fitted wooden base.

1151<sup>w</sup>

#### **PETRIFIED WOOD LOG SECTION**

*Araucarioxylon arizonicum*

*Upper Triassic*

*Chinle Formation, Arizona*

From the famed Petrified Forest of Arizona comes this beautiful section of an ancient conifer. Specimens from this locality are prized for their varied and interesting colors. *Measuring 18 x 18 x 9in*

**\$1,500 - 2,500**

1152<sup>w</sup>

#### **PETRIFIED ARIZONA RAINBOW WOOD**

*Araucarioxylon arizonicum*

*Triassic*

*Chinle Formation, Arizona*

A tabletop or room-sized specimen with ochre center, black and grey border and bark texture all around. *Weighing approximately 15 kg., measuring 19 x 12 x 7in*

**\$600 - 800**

**To be sold without reserve**

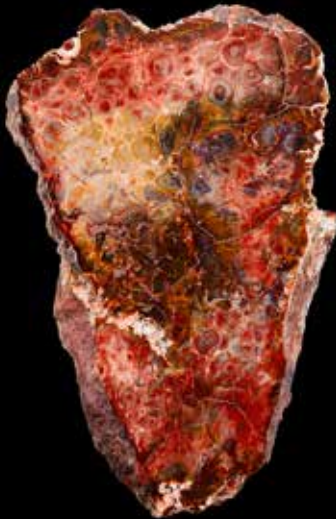




1153



1155



1154



1156

1153<sup>w</sup>

#### **PETRIFIED WOOD LONGITUDINAL CROSS-SECTION**

*Madagascar*

Rich with reddish hues, this is a fine example of plank wood which still retains its bark texture on along the edges and on the reverse side. The face has been honed to a fine polish. Suitable for use as a hall table or sofa table. *Measuring 28 x 15 x 2in*

**\$1,500 - 2,000**

1154

#### **LARGE GROUP OF PETRIFIED WOOD SPECIMENS AND OTHER AGATE SLABS**

*World localities*

Including several examples of petrified palm wood as well as various cycads. (28) *Length of largest measuring 7 3/4in*

**\$1,200 - 1,500**

1155<sup>w</sup>

#### **LARGE PYRITE CRYSTAL CLUSTER**

*Huanzala Mine, Huallanca District, Peru*

From the high mountain range known as Cordillera Negra, this very large specimen is composed of a mass of lustrous, cubic pyrite crystals. *Measuring 16 x 13 x 5in*

**\$1,200 - 1,500**

1156<sup>w</sup>

#### **PETRIFIED WOOD SPECIMEN FROM A RARE LOCALITY**

*Burma*

*100 million years old*

When trees fall or are covered by sediment, over time, the organic materials of the wood are replaced with mineral deposits over thousands (if not millions) of years. Most frequently a silicate, such as quartz, is the primary replacement mineral which makes the petrified wood colorful and durable. When these pieces are found and dug up from deep pits, workers spend hundreds of hours hand-polishing each piece (but they do not carve the shape) of these to show the natural coloring and shape of these unique treasures. The present piece is particularly unusual in that the wood had already begun rotting before the woods silicified. The shapes on this piece are all natural, and the luster was brought out with only a slight polish. This wood is more translucent (silica-rich) than most petrified wood, in addition to having the surreal forms and swirls. Its placement on a custom-fitted wooden stand lends it the presence of an elegant contemplation stone in the traditional Chinese manner. *Height with stand: 15in*

**\$1,000 - 1,500**

**END OF SALE**

**FINE WATCHES  
AND WRISTWATCHES**

Consignments now invited

**INQUIRIES**

+1 212 461 6530

[watches.us@bonhams.com](mailto:watches.us@bonhams.com)

**HEUER. A FINE STAINLESS STEEL  
MANUAL WIND CHRONOGRAPH  
WRISTWATCH MONACO**

Circa 1972



**Bonhams**

NEW YORK

[bonhams.com/watches](http://bonhams.com/watches)

## OFFSITE SOLD PROPERTY STORAGE INFORMATION

Please note that all lots listed at the beginning of our printed catalog, if not removed immediately after the sale, will be transferred to a nearby storage facility. For the convenience of the successful bidder of one or more of these lots, all purchased lots will be transferred to our offsite storage together. Please read the Conditions of Sale regarding the removal of sold lots.

Bonhams' storage and logistics partner is Box Brothers, a well-known organization that specializes in crating, packaging and shipping.

Our storage and logistics partnership provides several beneficial services. The first being 5 days of free storage.

- During this auction, clients will be expected to pick up all property from Bonhams by 5pm on Friday December 8, 2017.
- All items listed at the beginning of our printed catalog, along with all other items purchased, if not removed immediately after the sale, will be transferred to Box Brothers warehouse. With an appointment made 24 hours in advance, clients can pick up their property at 220 W. Ivy Ave, Unit C in Inglewood.
- Box Brothers will charge an uplift fee to transport your items to their warehouse. Small items that can be handled easily by one person will be charged \$50. Larger items that can still be handled by one person will be charged \$85. Large items that require two people to handle will be charged \$100. Charges will be payable directly to Box Brothers. Should you choose to have Box Brothers ship or deliver your property, this uplift fee will be waived.
- Clients will have 5 days of free storage to retrieve their property or make arrangements with Box Brothers to pack and ship their property. Storage fees will begin to accrue on the 6th day of storage.
- Retrieval from the offsite warehouse is by appointment only. Clients must call 24 hours in advance. Clients can utilize the delivery services offered by Box Brothers or clients may make their own arrangements. Please call +1 (800) 474-7447.
- Box Brothers is available to ship internationally. They offer importing and exporting services. Clients can select either airfreight or ocean cargo delivery options, which range from door-to-port, door-to-airport with door-to-door service also available. Clients can ship one item, co-load or container load at a discounted rate through Box Brothers. Please call +1 (800) 474-7447 for more information.
- All purchases not designated for offsite storage will remain onsite at Bonhams for a period of 21 days beginning the date of the auction. During this 21 day period, clients may remove such property themselves, make arrangements with the Bonhams packaging and shipping department or provide their own shipper for removal of all property. If a client does not retrieve his/her property or finalize shipping arrangements within 21 days, the purchases will be removed to the offsite storage facility of Box Brothers. Again, uplift charges for packing and transport from our gallery to Box Brothers will be charged by Box Brothers.
- Payment of the hammer price, premium and any applicable sales taxes must be made directly to Bonhams prior to the release of property. Any removal, storage or other fees due to Box Brothers should be made directly to Box Brothers.
- Change of shipping address must be authorized by Bonhams Revenue Manager, Martin Romero, before Box Brothers will be permitted to re-route your purchases.

## LOTS TO BE REMOVED TO STORAGE:

1003	1087
1004	1088
1005	1089
1011	1090
1012	1091
1013	1092
1014	1093
1015	1094
1016	1095
1021	1096
1022	1097
1023	1098
1024	1099
1025	1101
1026	1102
1027	1104
1028	1105
1029	1106
1030	1107
1031	1108
1032	1109
1033	1110
1044	1114
1045	1115
1046	1116
1047	1117
1048	1118
1049	1119
1051	1121
1061	1122
1062	1123
1064	1124
1066	1128
1067	1139
1069	1144
1070	1145
1071	1146
1072	1147
1073	1148
1074	1149
1075	1150
1076	1151
1082	1152
1083	1153
1084	1155
1085	1156
1086	



## CONDITIONS OF SALE

The following Conditions of Sale, as amended by any published or posted notices or verbal announcements during the sale, constitute the entire terms and conditions on which property listed in the catalog shall be offered for sale or sold by Bonhams & Butterfields Auctioneers Corp. and any consignor of such property for whom we act as agent. If live online bidding is available for the subject auction, additional terms and conditions of sale relating to online bidding will apply; see [www.bonhams.com/WebTerms](http://www.bonhams.com/WebTerms) for the supplemental terms. As used herein, "Bonhams," "we" and "us" refer to Bonhams & Butterfields Auctioneers Corp.

1. As used herein, the term "bid price" means the price at which a lot is successfully knocked down to the purchaser. The term "purchase price" means the aggregate of (a) the bid price, (b) a PREMIUM retained by us and payable by the purchaser EQUAL TO 25% OF THE FIRST \$250,000 OF THE BID PRICE, 20% OF THE AMOUNT OF THE BID PRICE ABOVE \$250,000 UP TO AND INCLUDING \$4,000,000, AND 12.5% OF THE AMOUNT OF THE BID PRICE OVER \$4,000,000, and (c) unless the purchaser is exempt by law from the payment thereof, any Arizona, California, Colorado, Connecticut, Florida, Georgia, Illinois, Massachusetts, Nevada, New Jersey, New York, Pennsylvania, Texas, Virginia, Washington, D.C., Washington state, or other state or local sales tax (or compensating use tax) and other applicable taxes.

2. On the fall of the auctioneer's hammer, the highest bidder shall have purchased the offered lot in accordance and subject to compliance with all of the conditions set forth herein and (a) assumes full risk and responsibility therefor, (b) if requested will sign a confirmation of purchase, and (c) will pay the purchase price in full or such part as we may require for all lots purchased. No lot may be transferred. Any person placing a bid as agent on behalf of another (whether or not such person has disclosed that fact or the identity of the principal) may be jointly and severally liable with the principal under any contract resulting from the acceptance of a bid.

Unless otherwise agreed, payment in good funds is due and payable within five (5) business days following the auction sale. Whenever the purchaser pays only a part of the total purchase price for one or more lots purchased, we may apply such payments, in our sole discretion, to the lot or lots we choose. Payment will not be deemed made in full until we have collected good funds for all amounts due.

Payment for purchases may be made in or by (a) cash, (b) cashier's check or money order, (c) personal check with approved credit drawn on a U.S. bank, (d) wire transfer or other immediate bank transfer, or (e) Visa, MasterCard, American Express or Discover credit, charge or debit card. A processing fee will be assessed on any returned checks. Please note that the amount of cash notes and cash equivalents that can be accepted from a given purchaser may be limited.

To the fullest extent permitted by applicable law: The purchaser grants us a security interest in the property, and we may retain as collateral security for the purchaser's obligations to us, any property and all monies held or received by us for the account of the purchaser, in our possession. We also retain all rights of a secured party under the California Commercial Code. If the foregoing conditions or any other applicable conditions herein are not complied with, in addition to all other remedies available to us and the consignor by law, we may at our election: (a) hold the purchaser liable for the full purchase price and any late charges, collection costs, attorneys' fees and costs, expenses and incidental damages incurred by us or the consignor arising out of the purchaser's breach; (b) cancel the sale, retaining as liquidated damages all payments made by the purchaser; and/or (c) cancel the sale and/or

resell the purchased property, at public auction and/or by private sale, and in such event the purchaser shall be liable for the payment of all consequential damages, including any deficiencies or monetary losses, and all costs and expenses of such sale or sales, our commissions at our standard rates, all other charges due hereunder, all late charges, collection costs, attorneys' fees and costs, expenses and incidental damages. In addition, where two or more amounts are owed in respect of different transactions by the purchaser to us, to Bonhams 1793 Limited and/or to any of our other affiliates, subsidiaries or parent companies worldwide within the Bonhams Group, we reserve the right to apply any monies paid in respect of a transaction to discharge any amount owed by the purchaser. If all fees, commissions, premiums, bid prices and other sums due to us from the purchaser are not paid promptly as provided in these Conditions of Sale, we reserve the right to impose a finance charge equal to 1.5% per month (or, if lower, the maximum nonusurious rate of interest permitted by applicable law), on all amounts due to us beginning on the 31st day following the sale until payment is received, in addition to other remedies available to us by law.

3. We reserve the right to withdraw any property and to divide and combine lots at any time before such property's auction. Unless otherwise announced by the auctioneer at the time of sale, all bids are per lot as numbered in the catalog and no lots shall be divided or combined for sale.

4. We reserve the right to reject a bid from any bidder, to split any bidding increment, and to advance the bidding in any manner the auctioneer may decide. In the event of any dispute between bidders, or in the event the auctioneer doubts the validity of any bid, the auctioneer shall have sole and final discretion either to determine the successful bidder or to re-offer and resell the article in dispute. If any dispute arises after the sale, our sales records shall be conclusive in all respects.

5. If we are prevented by fire, theft or any other reason whatsoever from delivering any property to the purchaser or a sale otherwise cannot be completed, our liability shall be limited to the sum actually paid therefor by the purchaser and shall in no event include any compensatory, incidental or consequential damages.

6. If a lot is offered subject to a reserve, we may implement such reserve by bidding on behalf of the consignor, whether by opening bidding or continuing bidding in response to other bidders until reaching the reserve. If we have an interest in an offered lot and the proceeds therefrom other than our commissions, we may bid therefor to protect such interest. CONSIGNORS ARE NOT ALLOWED TO BID ON THEIR OWN ITEMS.

7. All statements contained in the catalog or in any bill of sale, condition report, invoice or elsewhere as to authorship, period, culture, source, origin, measurement, quality, rarity, provenance, importance, exhibition and literature of historical relevance, or physical condition ARE QUALIFIED STATEMENTS OF OPINION AND NOT REPRESENTATIONS OR WARRANTIES. No employee or agent of Bonhams is authorized to make on our behalf or on that of the consignor any representation or warranty, oral or written, with respect to any property.

8. All purchased property shall be removed from the premises at which the sale is conducted by the date(s) and time(s) set forth in the "Buyer's Guide" portion of this catalog. Property designated with a "W" and associated purchased lots, if not removed promptly following sale, will be transferred to an offsite warehouse at the purchaser's risk and expense, as set forth in more detail in the "Buyer's Guide." Purchased property that is permitted to remain onsite at Bonhams' facility should be removed at the purchaser's expense not later than 5:00 p.m. Pacific Time

five (5) business days following the date of the sale. If not so removed, a storage fee of \$5.00 per lot per day will be payable to us by the purchaser beginning at the close of the 21st day following the sale, and we may thereafter transfer such property to an offsite warehouse at the purchaser's risk and expense. Accounts must be settled in full before property will be released. Packing and handling of purchased lots are the responsibility of the purchaser. Bonhams can provide packing and shipping services for certain items as noted in the "Buyer's Guide" section of the catalog.

9. The copyright in the text of the catalog and the photographs, digital images and illustrations of lots in the catalog belong to Bonhams or its licensors. You will not reproduce or permit anyone else to reproduce such text, photographs, digital images or illustrations without our prior written consent.

10. These Conditions of Sale shall bind the successors and assigns of all bidders and purchasers and inure to the benefit of our successors and assigns. No waiver, amendment or modification of the terms hereof (other than posted notices or oral announcements during the sale) shall bind us unless specifically stated in writing and signed by us. If any part of these Conditions of Sale is for any reason invalid or unenforceable, the rest shall remain valid and enforceable.

11. These Conditions of Sale and the purchaser's and our respective rights and obligations hereunder are governed by the laws of the State of California. By bidding at an auction, each purchaser and bidder agrees to be bound by these Conditions of Sale. Any dispute, controversy or claim arising out of or relating to this agreement, or the breach, termination or validity thereof, brought by or against Bonhams (but not including claims brought against the consignor by the purchaser of lots consigned hereunder) shall be resolved by the procedures set forth below.

### MEDIATION AND ARBITRATION PROCEDURES

(a) Within 30 days of written notice that there is a dispute, the parties or their authorized and empowered representatives shall meet by telephone and/or in person to mediate their differences. If the parties agree, a mutually acceptable mediator shall be selected and the parties will equally share such mediator's fees. The mediator shall be a retired judge or an attorney familiar with commercial law and trained in or qualified by experience in handling mediations. Any communications made during the mediation process shall not be admissible in any subsequent arbitration, mediation or judicial proceeding. All proceedings and any resolutions thereof shall be confidential, and the terms governing arbitration set forth in paragraph (c) below shall govern.

(b) If mediation does not resolve all disputes between the parties, or in any event no longer than 60 days after receipt of the written notice of dispute referred to above, the parties shall submit the dispute for binding arbitration before a single neutral arbitrator. Such arbitrator shall be a retired judge or an attorney familiar with commercial law and trained in or qualified by experience in handling arbitrations. Such arbitrator shall make all appropriate disclosures required by law. The arbitrator shall be drawn from a panel of a national arbitration service agreed to by the parties, and shall be selected as follows: (i) If the national arbitration service has specific rules or procedures, those rules or procedures shall be followed; (ii) If the national arbitration service does not have rules or procedures for the selection of an arbitrator, the arbitrator shall be an individual jointly agreed to by the parties. If the parties cannot agree on a national arbitration service, the arbitration shall be conducted by the American Arbitration Association, and the arbitrator shall be selected in accordance with the Rules of

## CONDITIONS OF SALE - CONTINUED

the American Arbitration Association. The arbitrator's award shall be in writing and shall set forth findings of fact and legal conclusions.

(c) Unless otherwise agreed to by the parties or provided by the published rules of the national arbitration service:

(i) the arbitration shall occur within 60 days following the selection of the arbitrator;

(ii) the arbitration shall be conducted in the designated location, as follows: (A) in any case in which the subject auction by Bonhams took place or was scheduled to take place in the State of New York or Connecticut or the Commonwealth of Massachusetts, the arbitration shall take place in New York City, New York; (B) in all other cases, the arbitration shall take place in the city of San Francisco, California; and

(iii) discovery and the procedure for the arbitration shall be as follows:

(A) All arbitration proceedings shall be confidential;

(B) The parties shall submit written briefs to the arbitrator no later than 15 days before the arbitration commences;

(C) Discovery, if any, shall be limited as follows: (I) Requests for no more than 10 categories of documents, to be provided to the requesting party within 14 days of written request therefor; (II) No more than two (2) depositions per party, provided however, the deposition(s) are to be completed within one (1) day; (III) Compliance with the above shall be enforced by the arbitrator in accordance with California law;

(D) Each party shall have no longer than eight (8) hours to present its position. The entire hearing before the arbitrator shall not take longer than three (3) consecutive days;

(E) The award shall be made in writing no more than 30 days following the end of the proceeding. Judgment upon the award rendered by the arbitrator may be entered by any court having jurisdiction thereof.

To the fullest extent permitted by law, and except as required by applicable arbitration rules, each party shall bear its own attorneys' fees and costs in connection with the proceedings and shall share equally the fees and expenses of the arbitrator.

### LIMITED RIGHT OF RESCISSION

If within one (1) year from the date of sale, the original purchaser (a) gives written notice to us alleging that the identification of Authorship (as defined below) of such lot as set forth in the **BOLD TYPE** heading of the catalog description of such lot (as amended by any saleroom notices or verbal announcements during the sale) is not substantially correct based on a fair reading of the catalog (including the terms of any glossary contained therein), and (b) within 10 days after such notice returns the lot to us in the same condition as at the time of sale, and (c) establishes the allegation in the notice to our satisfaction (including by providing one or more written opinions by recognized experts in the field, as we may reasonably require), then the sale of such lot will be rescinded and, unless we have already paid to the consignor monies owed him in connection with the sale, the original purchase price will be refunded.

If, prior to receiving such notice from the original purchaser alleging such defect, we have paid the consignor monies owed him in connection with the sale, we shall pay the original purchaser the amount of our commissions, any other sale proceeds to which we are entitled and applicable taxes received from the purchaser on the sale and make demand on the consignor to pay the balance of the original purchase price to the original purchaser. Should the consignor fail to pay such amount promptly, we may disclose the identity of the consignor and assign to the original purchaser our rights against the consignor with respect to the lot the sale of which is sought to be rescinded. Upon such disclosure and assignment, any liability of Bonhams as consignor's agent with respect to said lot shall automatically terminate.

The foregoing limited right of rescission is available to the original purchaser only and may not be assigned to or relied upon by any subsequent transferee of the property sold. The purchaser hereby accepts the benefit of the consignor's warranty of title and other representations and warranties made by the consignor for the purchaser's benefit. Nothing in this section shall be construed as an admission by us of any representation of fact, express or implied, obligation or responsibility with respect to any lot. **THE PURCHASER'S SOLE AND EXCLUSIVE**

**REMEDY AGAINST BONHAMS FOR ANY REASON WHATSOEVER IS THE LIMITED RIGHT OF RESCISSION DESCRIBED IN THIS SECTION.**

"Authorship" means only the identity of the creator, the period, culture and source or origin of the lot, as the case may be, as set forth in the **BOLD TYPE** heading of the print catalog entry. The right of rescission does not extend to: (a) works of art executed before 1870 (unless these works are determined to be counterfeits created since 1870), as this is a matter of current scholarly opinion which can change; (b) titles, descriptions, or other identification of offered lots, which information normally appears in lower case type below the **BOLD TYPE** heading identifying the Authorship; (c) Authorship of any lot where it was specifically mentioned that there exists a conflict of specialist or scholarly opinion regarding the Authorship of the lot at the time of sale; (d) Authorship of any lot which as of the date of sale was in accordance with the then generally-accepted opinion of scholars and specialists regarding the same; or (e) the identification of periods or dates of creation in catalog descriptions which may be proven inaccurate by means of scientific processes that are not generally accepted for use until after publication of the catalog in which the property is offered or that were unreasonably expensive or impractical to use at the time of such publication.

### LIMITATION OF LIABILITY

EXCEPT AS EXPRESSLY PROVIDED ABOVE, ALL PROPERTY IS SOLD "AS IS." NEITHER BONHAMS NOR THE CONSIGNOR MAKES ANY REPRESENTATION OR WARRANTY, EXPRESS OR IMPLIED, AS TO THE MERCHANTABILITY, FITNESS OR CONDITION OF THE PROPERTY OR AS TO THE CORRECTNESS OF DESCRIPTION, GENUINENESS, ATTRIBUTION, PROVENANCE OR PERIOD OF THE PROPERTY OR AS TO WHETHER THE PURCHASER ACQUIRES ANY COPYRIGHTS OR OTHER INTELLECTUAL PROPERTY RIGHTS IN LOTS SOLD OR AS TO WHETHER A WORK OF ART IS SUBJECT TO THE ARTIST'S MORAL RIGHTS OR OTHER RESIDUAL RIGHTS OF THE ARTIST. THE PURCHASER EXPRESSLY ACKNOWLEDGES AND AGREES THAT IN NO EVENT SHALL BONHAMS BE LIABLE FOR ANY DAMAGES INCLUDING, WITHOUT LIMITATION, ANY COMPENSATORY, INCIDENTAL OR CONSEQUENTIAL DAMAGES.

## SELLER'S GUIDE

### SELLING AT AUCTION

Bonhams can help you every step of the way when you are ready to sell art, antiques and collectible items at auction. Our regional offices and representatives throughout the US are available to service all of your needs. Should you have any further questions, please visit our website at [www.bonhams.com/us](http://www.bonhams.com/us) for more information or call our Client Services Department at +1 (323) 850 7500.

### AUCTION ESTIMATES

The first step in the auction process is to determine the auction value of your property. Bonhams' world-renowned specialists will evaluate your special items at no charge and in complete confidence. You can obtain an auction estimate in many ways:

- Attend one of our Auction Appraisal Events held regularly at our galleries and in other major metropolitan areas. The updated schedule for Bonhams Auction Appraisal Events is available at [www.bonhams.com/us](http://www.bonhams.com/us).
- Call our Client Services Department to schedule a private appointment at one of our galleries. If you have a large collection, our specialists can travel, by appointment, to evaluate your property on site.
- Send clear photographs to us of each individual item, including item dimensions and other pertinent information with each picture. Photos should be sent to Bonhams' address in envelopes marked

as "photo auction estimate". Alternatively, you can submit your request using our online form at [www.bonhams.com/us](http://www.bonhams.com/us). Digital images may be attached to the form. Please limit your images to no more than five (5) per item.

### CONSIGNING YOUR PROPERTY

After you receive an estimate, you may consign your property to us for sale in the next appropriate auction. Our staff assists you throughout the process, arranging transportation of your items to our galleries (at the consignor's expense), providing a detailed inventory of your consignment, and reporting the prices realized for each lot. We provide secure storage for your property in our warehouses and all items are insured throughout the auction process. You will receive payment for your property approximately 35 days after completion of sale.

Sales commissions vary with the potential auction value of the property and the particular auction in which the property is offered. Please call us for commission rates.

### PROFESSIONAL APPRAISAL SERVICES

Bonhams' specialists conduct insurance and fair market value appraisals for private collectors, corporations, museums, fiduciaries and government entities on a daily basis. Insurance appraisals, used for insurance purposes, reflect the cost of replacing property in today's retail market. Fair market value appraisals are used for estate,

tax and family division purposes and reflect prices paid by a willing buyer to a willing seller.

When we conduct a private appraisal, our specialists will prepare a thorough inventory listing of all your appraised property by category. Valuations, complete descriptions and locations of items are included in the documentation.

Appraisal fees vary according to the nature of the collection, the amount of work involved, the travel distance, and whether the property is subsequently consigned for auction.

Our appraisers are available to help you anywhere and at any time. Please call our Client Services Department to schedule an appraisal.

### ESTATE SERVICES

Since 1865, Bonhams has been serving the needs of fiduciaries – lawyers, trust officers, accountants and executors – in the disposition of large and small estates. Our services are specially designed to aid in the efficient appraisal and disposition of fine art, antiques, jewelry, and collectibles. We offer a full range of estate services, ranging from flexible financial terms to tailored accounting for heirs and their agents to world-class marketing and sales support.

For more information or to obtain a detailed Trust and Estates package, please visit our website at [www.bonhams.com/us](http://www.bonhams.com/us) or contact our Client Services Department.

BUYER’S GUIDE

BIDDING & BUYING AT AUCTION

Whether you are an experienced bidder or an enthusiastic novice, auctions provide a stimulating atmosphere unlike any other. Bonhams previews and sales are free and open to the public. As you will find in these directions, bidding and buying at auction is easy and exciting. Should you have any further questions, please visit our website at [www.bonhams.com](http://www.bonhams.com) or call our Client Services Department at +1 (323) 850 7500.

Catalogs

Before each auction we publish illustrated catalogs that include dates and times for previews and auctions. Our catalogs also provide descriptions and estimated values for each "lot." A lot may refer to a single item or to a group of items auctioned together. We offer our catalogs by subscription or by single copy. For information on subscribing to our catalogs, you may refer to the subscription form in this catalog, call our Client Services Department, or visit our website at [www.bonhams.com/us](http://www.bonhams.com/us).

Previews

Auction previews are your chance to inspect each lot prior to the auction. We encourage you to look closely and examine each object on which you may want to bid so that you will know as much as possible about it. Items are sold "as is" and with all faults; illustrations in our catalogs, website and other materials are provided for identification only. At the previews, our staff is always available to answer your questions and guide you through the auction process. Condition reports may be available upon request.

Estimates

Bonhams catalogs include estimates for each lot, exclusive of buyer's premium and tax. The estimates are provided as an approximate guide to current market value and should not be interpreted as a representation or prediction of actual selling prices. They are determined well in advance of a sale and are subject to revision. Please contact us should you have any questions about value estimates.

Reserves

All lots in a catalog are subject to a reserve unless otherwise indicated. The reserve is the minimum price that the seller is willing to accept for a lot. This amount is confidential and does not exceed the low estimated value.

BIDDING AT AUCTION

At Bonhams, you can bid in many ways: in person, via absentee bid, over the phone, or via Bonhams' online bidding facility. Absentee bids can be submitted in person, online, via fax or via email.

A valid Bonhams client account is required to participate in bidding activity. You can obtain registration information online, at the reception desk or by calling our Client Services Department.

By bidding at auction, whether in person or by agent, by absentee bid, telephone, online or other means, the buyer or bidder agrees to be bound by the Conditions of Sale.

Lots are auctioned in consecutive numerical order as they appear in the catalog. Bidding normally begins below the low estimate. The auctioneer will accept bids from interested parties present in the saleroom, from telephone bidders, and from absentee bidders who have left written bids in advance of the sale. The auctioneer may also execute bids on behalf of the consignor up to the amount of the reserve, but never above it.

We assume no responsibility for failure to execute bids for any reason whatsoever.

In Person

If you are planning to bid at auction, you will need to register at the reception desk in order to receive a numbered bid card. To place a bid, hold up your card so that the auctioneer can clearly see it. Decide on the maximum amount that you wish to pay, exclusive of buyer's premium and tax, and continue bidding until your bid prevails or you reach your limit. If you are the successful bidder on a lot, the auctioneer will acknowledge your paddle number and bid amount.

Absentee Bids

As a service to those wishing to place bids, we may at our discretion accept bids without charge in advance of sale by telephone, by facsimile or in writing on bidding forms available from us. "Buy" bids will not be accepted; all bids must state the highest bid price the bidder is willing to pay. Our auction staff will try to bid just as you would, with the goal of obtaining the

item at the lowest bid price possible. In the event identical bids are submitted, the earliest bid submitted will take precedence. Absentee bids shall be executed in competition with other absentee bids, any applicable reserve, and bids from other auction participants. A friend or agent may place bids on your behalf, provided that we have received your written authorization prior to the sale. Absentee bid forms are available in our catalogs, online at [www.bonhams.com/us](http://www.bonhams.com/us), and at our San Francisco, Los Angeles and New York galleries.

By Telephone

Under special circumstances, we can arrange for you to bid by telephone. To arrange for a telephone bid, please contact our Client Services Department a minimum of 24 hours prior to the sale.

Online

Web users may place absentee bids online from anywhere in the world. To bid online, please visit our website at [www.bonhams.com/us](http://www.bonhams.com/us).

We are pleased to make our live online bidding facility available to bidders in this sale.

Additional terms and conditions of sale relating to online bidding will apply. Please see [www.bonhams.com/24889](http://www.bonhams.com/24889) or contact the Client Services Department to obtain information and learn how you can register and bid online in this sale.

Bid Increments

Bonhams generally uses the following increment multiples as bidding progresses:

\$50-200 .....	by \$10s
\$200-500 .....	by \$20/50/80s
\$500-1,000 .....	by \$50s
\$1,000-2,000 .....	by \$100s
\$2,000-5,000 .....	by \$200/500/800s
\$5,000-10,000 .....	by \$500s
\$10,000-20,000 .....	by \$1,000s
\$20,000-50,000 .....	by \$2,000/5,000/8,000s
\$50,000-100,000 .....	by \$5,000s
\$100,000-200,000 .....	by \$10,000s
above \$200,000 .....	at auctioneer's discretion

**The auctioneer may split or reject any bid at any time at his or her discretion as outlined in the Conditions of Sale.**

Currency Converter

Solely for the convenience of bidders, a currency converter may be provided at Bonhams sales. The rates quoted for conversion of other currencies to U.S. Dollars are indications only and should not be relied upon by a bidder, and neither Bonhams nor its agents shall be responsible for any errors or omissions in the operation or accuracy of the currency converter.

Buyer's Premium

A buyer's premium is added to the winning bid price of each individual lot purchased, at the rates set forth in the Conditions of Sale. The winning bid price plus the premium constitute the purchase price for the lot. Applicable sales taxes are computed based on this figure, and the total becomes your final purchase price.

Unless specifically illustrated and noted, fine art frames are not included in the estimate or purchase price. Bonhams accepts no liability for damage or loss to frames during storage or shipment.

All sales are final and subject to the Conditions of Sale found in our catalogs, on our website, and available at the reception desk.

Payment

All buyers are asked to pay and pick up by 3pm on the business day following the auction. Payment may be made to Bonhams by cash, checks drawn on a U.S. bank, money order, wire transfer, or by Visa, MasterCard, American Express or Discover credit or charge card or debit card. All items must be paid for within 5 business days of the sale. Please note that payment by personal or business check may result in property not being released until purchase funds clear our bank.

Sales Tax

Residents of states listed in Paragraph 1 of the Conditions of Sale must pay applicable sales tax. Other state or local taxes (or compensation use taxes) may apply. Sales tax will be automatically added to the invoice unless a valid resale number has been furnished or the property is shipped via common carrier to destinations outside the states listed in

the Conditions of Sale. If you wish to use your resale license please contact Cashiers for our form.

Shipping & Removal

Buyers are to review the Offsite Sold Property Storage page for a list of lots that will be removed to the offsite warehouse of Box Brothers. These designated lots must be retrieved by the buyer prior to the day and time designated on the Offsite Sold Property Storage page. If buyers of these designated lots also buy other lots, such as decorations, rugs or works of art, these lots may also be removed to the warehouse of Box Brothers, so all lots remain together and customers can collect or ship from one location. All other items will remain at Bonhams for a period of 21 days, after which time they may be transferred to offsite storage. Wine, Jewelry, Natural History, Collectibles, 20th Century Decorative Arts, Rugs, Native American Art, Tribal Art and most Arms & Armor auctions are not included in this policy.

Box Brothers San Leandro (for San Francisco auctions only)  
1471 Doolittle Drive, San Leandro, CA 94577  
Tel (800) 942 6822; Fax (510) 628 8454

Box Brothers Los Angeles (for Los Angeles auctions only)  
220 W. Ivy Ave, Unit C, Inglewood, Ca 90302  
+1 (310) 419 9915 or +1 (800) 474 7447

Box Brothers is open Monday-Friday 8am-5pm with Saturday and Sunday hours available. Buyers must contact Box Brothers 24 hours in advance of pickup. Appointments are required.

Bonhams can accommodate shipping for certain items. Please contact our Cashiers Department for more information or to obtain a quote. Refer to Conditions of Sale for special terms governing the shipment of Arms and Wine. Shipments are made during weekday business hours up to four weeks after payment is received. Carriers are not permitted to deliver to P.O. Boxes.

International buyers are responsible for all import/export customs duties and taxes. An invoice stating the actual purchase price(s) will accompany all international purchases.

Simultaneous sale property collection notice:

If this sale previews in multiple cities, please see the title page for details regarding final location of property for collection.

Handling and Storage Charges

Please note: For sold lots removed to Box Brothers, there will be no post-sale storage charge for lots collected within 5 days from the sale date. For lots that remain at Bonhams, there will be no post-sale storage charge for lots collected within 21 days of the sale date. Handling fees may apply.

Lots uncollected at Bonhams after 21 days may be removed to the warehouse of Box Brothers. Handling and storage fees will apply.

Insurance: All sold lots are insured by Box Brothers at the sum of the hammer price plus buyer's premium.

**Please refer to Box Brothers for a list of Handling, Storage and Insurance fees.**

Payment

**Payments for purchased lots must be made directly to Bonhams.** Box Brothers will not release property to a buyer unless the buyer has paid Bonhams first. All charges for handling and storage due to Box Brothers must be paid by the time of collection from their warehouse. Please telephone Box Brothers at +1 (800) 474 7447 in advance to ascertain the amount due. **Lots will only be released from Box Brothers' warehouse with a "Release Order" obtained from the cashier's office at Bonhams.**

The removal/storage and/or shipment by Box Brothers of any lots will be subject to their standard Conditions of Business, copies of which are available at Bonhams or from Box Brothers directly.

Auction Results

Auction results are usually available on the next business day following the sale or online at [www.bonhams.com/us](http://www.bonhams.com/us).



# Auction Registration Form

(Attendee / Absentee / Online / Telephone Bidding)

Please circle your bidding method above.

<input type="checkbox"/>	<input type="checkbox"/>	<input type="checkbox"/>	<input type="checkbox"/>
--------------------------	--------------------------	--------------------------	--------------------------

**Paddle number (for office use only)**

**General Notice:** This sale will be conducted in accordance with Bonhams Conditions of Sale, and your bidding and buying at the sale will be governed by such terms and conditions. Please read the Conditions of Sale in conjunction with the Buyer's Guide relating to this sale and other published notices and terms relating to bidding. Payment by personal or business check may result in your property not being released until purchase funds clear our bank. Checks must be drawn on a U.S. bank.

**Notice to Absentee Bidders:** In the table below, please provide details of the lots on which you wish to place bids at least 24 hours prior to the sale. Bids will be rounded down to the nearest increment. Please refer to the Buyer's Guide in the catalog for further information relating to instructions to Bonhams to execute absentee bids on your behalf. Bonhams will endeavor to execute bids on your behalf but will not be liable for any errors or non-executed bids.

**Notice to First Time Bidders:** New clients are requested to provide photographic proof of ID - passport, driving license, ID card, together with proof of address - utility bill, bank or credit card statement etc. Corporate clients should also provide a copy of their articles of association / company registration documents, together with a letter authorizing the individual to bid on the company's behalf. Failure to provide this may result in your bids not being processed. For higher value lots you may also be asked to provide a bankers reference.

**Notice to online bidders:** If you have forgotten your username and password for [www.bonhams.com](http://www.bonhams.com), please contact Client Services.

**If successful**

I will collect the purchases myself ☐  
Please contact me with a shipping quote (if applicable) ☐  
I will arrange a third party to collect my purchase(s) ☐

**Please email or fax the completed Registration Form and requested information to:**

Bonhams Client Services Department  
7601 W. Sunset Blvd  
Los Angeles, California 90046  
Tel +1 (323) 850 7500  
Fax +1 (323) 850 6090  
[bids.us@bonhams.com](mailto:bids.us@bonhams.com)

# Bonhams

<b>Sale title:</b> Natural History	<b>Sale date:</b> Tuesday December 5, 2017
<b>Sale no.</b> 24889	<b>Sale venue:</b> Los Angeles
<b>General Bid Increments:</b> \$10 - 200 .....by 10s \$200 - 500 .....by 20 / 50 / 80s \$500 - 1,000 .....by 50s \$1,000 - 2,000 .....by 100s \$2,000 - 5,000 .....by 200 / 500 / 800s \$5,000 - 10,000 .....by 500s \$10,000 - 20,000 .....by 1,000s \$20,000 - 50,000 .....by 2,000 / 5,000 / 8,000s \$50,000 - 100,000 .....by 5,000s \$100,000 - 200,000 .....by 10,000s above \$200,000 .....at the auctioneer's discretion The auctioneer has discretion to split any bid at any time.	
<b>Customer Number</b>	<b>Title</b>
<b>First Name</b>	<b>Last Name</b>
<b>Company name (to be invoiced if applicable)</b>	
<b>Address</b>	
<b>City</b>	<b>County / State</b>
<b>Post / Zip code</b>	<b>Country</b>
<b>Telephone mobile</b>	<b>Telephone daytime</b>
<b>Telephone evening</b>	<b>Fax</b>
<b>Telephone bidders:</b> indicate primary and secondary contact numbers by writing ① or ② next to the telephone number.	
<b>E-mail (in capitals)</b> _____ By providing your email address above, you authorize Bonhams to send you marketing materials and news concerning Bonhams and partner organizations. Bonhams does not sell or trade email addresses.	
I am registering to bid as a private client <input type="checkbox"/>	I am registering to bid as a trade client <input type="checkbox"/>
<b>Resale:</b> please enter your resale license number here _____ We may contact you for additional information.	

SHIPPING	
<b>Shipping Address (if different than above):</b>	
<b>Address:</b> _____	<b>Country:</b> _____
<b>City:</b> _____	<b>Post/ZIP code:</b> _____

**Please note that all telephone calls are recorded.**

Type of bid (A-Absentee, T-Telephone)	Lot no.	Brief description (In the event of any discrepancy, lot number and not lot description will govern.) If you are bidding online there is no need to complete this section.	MAX bid in US\$ (excluding premium and applicable tax) Emergency bid for telephone bidders only*

**You instruct us to execute each absentee bid up to the corresponding bid amount indicated above.**

\* Emergency Bid: A maximum bid (exclusive of Buyer's Premium and tax) to be executed by Bonhams only if we are unable to contact you by telephone or should the connection be lost during bidding.

BY SIGNING THIS FORM YOU AGREE THAT YOU HAVE READ AND UNDERSTAND OUR CONDITIONS OF SALE AND SHALL BE LEGALLY BOUND BY THEM, AND YOU AGREE TO PAY THE BUYER'S PREMIUM, ANY APPLICABLE TAXES, AND ANY OTHER CHARGES MENTIONED IN THE BUYER'S GUIDE OR CONDITIONS OF SALE. THIS AFFECTS YOUR LEGAL RIGHTS.

<b>Your signature:</b>	<b>Date:</b>
------------------------	--------------



EB 1793

**Bonhams**

7601 W. Sunset Boulevard  
Los Angeles, California 90046

+1 323 850 7500  
+1 323 850 6090 (fax)

