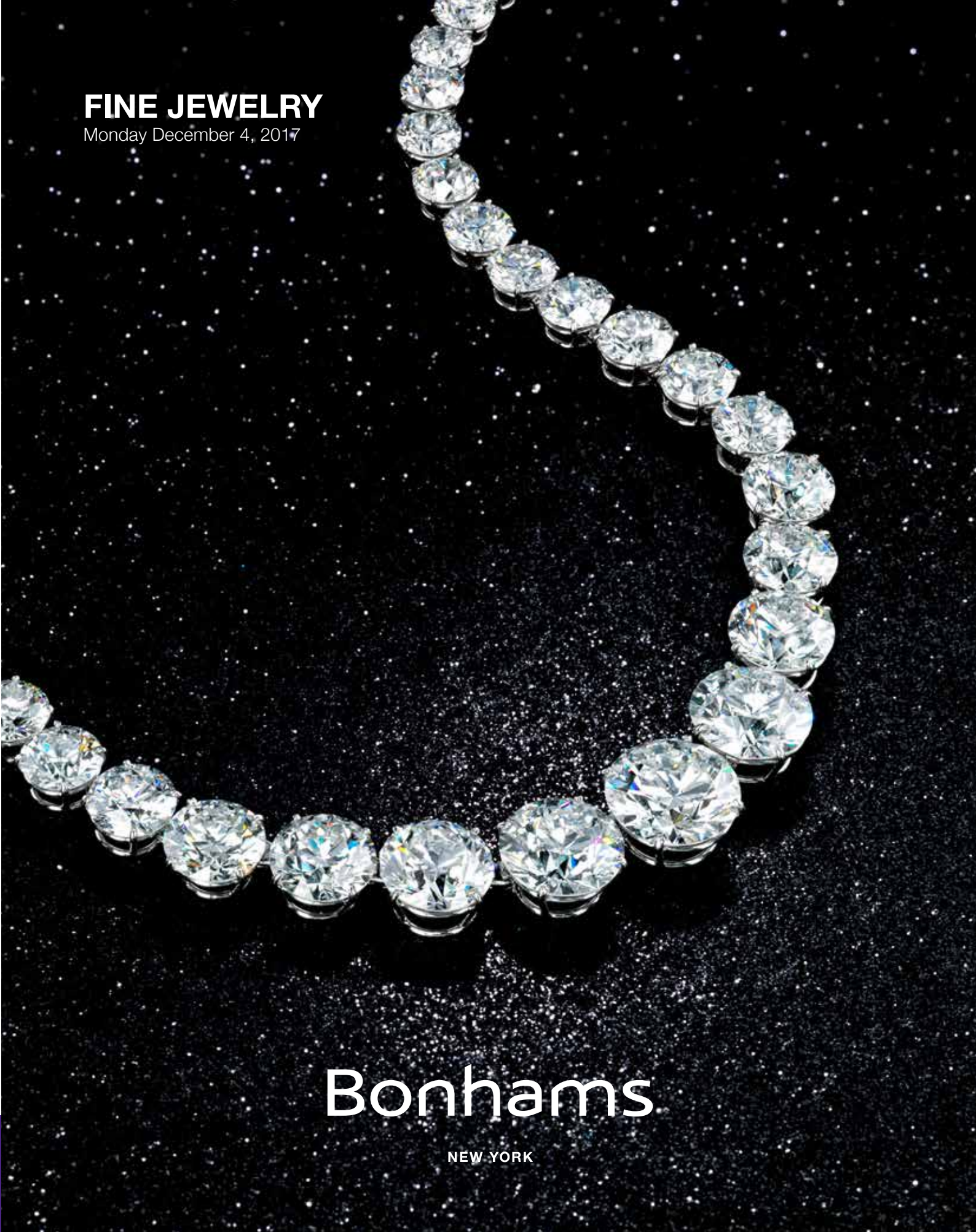


FINE JEWELRY

Monday December 4, 2017



Bonhams

NEW YORK



FINE JEWELRY

Monday December 4, 2017 at 3pm
New York

BONHAMS

580 Madison Avenue
New York, New York 10022
bonhams.com

PREVIEW

Geneva (Highlights)

By appointment only
Monday November 4
10am to 5pm
Tuesday November 5
10am to 5pm

Los Angeles

Friday November 17
12pm to 5pm
Saturday November 18
12pm to 5pm
Sunday November 19
12pm to 5pm

Hong Kong

Wednesday November 22
10am to 7pm
Thursday November 23
10am to 7pm
Friday November 24
10am to 7pm
Saturday November 25
10am to 2pm

New York

Thursday November 30
10am to 5pm
Friday December 1
10am to 5pm
Saturday December 2
12pm to 5pm
Sunday December 3
12pm to 5pm

SALE NUMBER:

24183

BIDS

+1 (212) 644 9001
+1 (212) 644 9009 fax
bids.us@bonhams.com

To bid via the internet please visit
www.bonhams.com

TELEPHONE BIDDING

Telephone bidding will only
be accepted on a lot with a
lower estimate in excess of
\$1000.

Please note that bids should be
submitted no later than 24hrs
prior to the sale. New Bidders
must also provide proof of
identity when submitting bids.
Failure to do this may result in
your bid not being processed.

LIVE ONLINE BIDDING IS AVAILABLE FOR THIS SALE

Please email bids.us@bonhams.com
with "Live bidding" in
the subject line 48hrs before
the auction to register for this
service.

Please see pages 112 to 115
for bidder information including
conditions of sale, after-sale
collection and shipment.

INQUIRIES

Matthew Girling
Group Jewelry Director
matthew.girling@bonhams.com

New York

+1 (212) 461 6526
Susan Abeles, Director, US Jewelry
Caroline Bostock
Karen Sampieri, GG
Camille Barbier, GG
Allaire Heisig
allaire.heisig@bonhams.com

Los Angeles

+1 (323) 436 5424
Dana Ehrman, Director, LA Jewelry,
GG
Alexis Vourvoulis, GG
Kelly Sitek, GG
kelly.sitek@bonhams.com

San Francisco

+1 (415) 503 3306
Shannon Beck, GG
shannon.beck@bonhams.com

ILLUSTRATIONS

Front cover: lot 185
Inside front cover: lot 36
Session page: lot 102
Back cover: lot 187
Inside back cover: lot 104

COLLECTION

Successful buyers with San
Francisco and Los Angeles
shipping addresses will have
their purchases shipped to that
office for pick-up. If you have a
San Francisco or Los Angeles
shipping address and do not
want your purchase sent there for
collection please notify us directly
by Tuesday December 5 2017.
Purchases will be available
for pick-up in San Francisco
and Los Angeles on Thursday
December 7, 2017.

INCLUDING PROPERTY FROM

A Beverly Hills, California Collector

A New York Collector

A Northern California Collector

A Private Collector

A Virginia Lady

An Island Park, Illinois Family

An East Coast Collection

Including Property from:

Of a Lady

Of a London Socialite

The Estate of Mary Clark Thompson

The Estate of Rosemary Donohue



INDEX

NAME	LOT NUMBER
Angela Cummings	53, 59, 109
Assil	161
Black Starr & Frost	91
Boucheron.....	142, 166
Buccellati	116, 117
Bulgari.....	48, 68, 70
Burch Korrodi	56
Cartier	25, 28, 51, 63, 66, 112, 113, 164, 177
Carvin French	76, 77, 110, 131, 132, 148
Chopard	72, 73, 99, 128
David Webb.....	105, 106, 108
Georges Rémond & Cie.....	6
Graff	186
Harry Winston.....	185
Hermès	75
Jean Schlumberger	67, 100, 101, 102, 103
Kohn	1
LaCloche Frères	19, 21, 27
Marzo	20
Moulinié Bautte & Cie	7
Patek Philippe	136
Peter Lindemann	49, 54, 55, 71
Tiffany & Co.....	4, 58, 59, 67, 100, 102, 103, 109, 139, 145
Van Cleef & Arpels.....	50, 52, 62, 119
Ventrella.....	46
Vhernier.....	88



follow us at [#bonhamsjewels](#)

DIAMOND GRADING

COLOR

GIA	CIBJO	UK TRADITIONAL
D	Exceptional White +	Finest White
E	Exceptional White	Finest White
F	Rare White +	Fine White
G	Rare White	Fine White
H	White	White
I	Slightly Tinted White	Commercial White
J	Slightly Tinted White	Top Silver Cape
K	Tinted White	Top Silver Cape
L	Tinted White	Silver Cape
M TO N	Tinted Color	Light Cape
O TO R	Tinted Color	Cape
R TO Z	Tinted Color	Dark Cape

CLARITY

IF	Internally Flawless	No inclusions and only insignificant surface blemishes when viewed under 10X magnification
VVS1 - VVS2	Very Very Slightly Included	Minute inclusions that are incredibly difficult to see under 10X magnification, generally only visible from the back of the stone and may be removed easily by repolishing
VS1 - VS2	Very Slightly Included	Minor inclusions that range from difficult (VS1) to slightly easier (VS2) to see under 10X magnification
SI1 - 2	Slightly Included	Noticeable inclusions that are easy (SI1) or very easy (SI2) to see under 10X magnification
I1 - 3	Obvious Inclusions	Obvious inclusions that are easily visible under 10X magnification and in some cases may even be seen without magnification

RING SIZES

ENGLISH	METRIC	AMERICAN	FRENCH/JAPANESE
A	37.8252	½	-
A½	38.4237	¾	-
B	39.0222	1	-
B½	39.6207	1¼	-
C	40.2192	1½	-
C½	40.8177	1¾	-
D	41.4162	2	1
D½	42.0147	2¼	2
E	42.6132	2½	-
E½	43.2117	2¾	3
F	43.8102	3	4
F½	44.4087	3¼	-
G	45.0072	3½	5
G½	45.6057	3¾	-
H	46.2042	4	6
H½	46.8027	4¼	-
I	47.4012	4½	7
I½	47.9997	4¾	8
J	48.5982	5	-
J½	49.1967	5¼	9
K	49.7952	5½	10
K½	50.3937	5¾	-
L	50.9922	6	11
L½	51.5907	6¼	-
M	52.1892	6½	12
M½	52.7877	6¾	13
N	53.4660	7	-
N½	54.1044	7¼	14
O	54.7428	7½	15
O½	55.3812	7¾	-
P	56.0196	8	16
P½	56.6580	8¼	-
Q	57.2964	8½	17
Q½	57.9348	8¾	18
R	58.5732	9	-
R½	59.2116	9¼	19
S	59.8500	9½	20
S½	60.4884	9¾	-
T	61.1268	10	21
T½	61.7652	10¼	22
U	62.4026	10½	-
U½	63.0420	10¾	23
V	63.6804	11	24
V½	64.3188	11¼	-
W	64.8774	11½	25
W½	65.4759	11¾	-
X	66.0744	12	26
X½	66.6729	12¼	-
Y	67.2714	12½	-
Y½	67.8699	12¾	-
Z	68.4684	13	-



1



2

PROPERTY OF A VIRGINIA LADY

1

A DIAMOND AND 14K GOLD BANGLE BRACELET, KOHN

the bangle of carved foliate design, centrally set with five old mine-cut diamonds; *estimated total diamond weight: 3.50 carats; gross weight approximately: 26.90 grams; circumference: 7 7/16in.*

\$8,000 - 12,000

2

AN ANTIQUE CAT'S EYE CHRYSOBERYL AND DIAMOND BANGLE/BROOCH, CIRCA 1880

centrally set with a round-shaped cat's eye cabochon chrysoberyl, weighing approximately 9.60 carats, framed by a double row of old brilliant-cut diamonds to similarly-set diamond shoulders; *estimated total diamond weight: 5.85 carats; mounted in silver topped 14k gold; circumference: 6 1/2in.*

\$8,000 - 12,000



3



4

PROPERTY OF VARIOUS OWNERS

<p>3</p> <p>AN EMERALD AND 18K GOLD RING centering a bezel-set octagonal-shaped step-cut emerald, weighing 6.56 carats; size 7 1/4</p> <p>\$7,000 - 10,000</p> <p>Accompanied by GIA report # 5181093976, dated October 17, 2017, stating the emerald as: Colombian origin, indications of moderate clarity enhancements.</p>	<p>4</p> <p>A BLACK OPAL, SAPPHIRE AND DEMANTOID BROOCH, LOUIS COMFORT TIFFANY, TIFFANY & CO. centering a black opal, within an ornate gold foliate frame, accented throughout by circular-cut demantoid and sapphires; <i>signed Tiffany & Co.</i>; accompanied by a modern signed box; mounted in 14k gold; length: 1 3/4in.</p> <p>\$18,000 - 22,000</p> <p>Accompanied by a copy of a letter of authenticity from Janet Zapata, dated December 23, 2013.</p>
---	--

5

A FINE AND RARE LOUIS XV GOLD AND ENAMEL SNUFF BOX, FRANÇOIS JOUBERT, 1761/1762

of oval outline, the hinged lid, sides and base enameled with domestic genre scenes within enamel border of floral scrolls; with the maker's mark of François Joubert (*reçu maître*, 1749), Paris 1761/1762, with the charge mark of Jean-Jacques Prevost 1762 - 1768; length: 3 3/4in.; width: 2 3/4in.

\$18,000 - 22,000

The best known work by François Joubert is an elaborate sauce boat of 1754 / 1755 with the arms of Mme. de Pompadour now in the Musée des Arts Decoratifs, Paris. Boxes by one Pierre-Aymé Joubert (*reçu maître* 1735) are recorded, but Granjean notes that "On the 23rd of December 1763 the wardens of the goldsmiths company declared him absent from Paris..." suggesting he had abandoned his business. His relation to François is not known, but the present box may be evidence that the latter was his successor.

See: Serge Granjean. *Catalogue des tabatières...du musée du Louvre*. Paris 1981 p 117.



5



6



7

6

A FINE GOLD, ENAMEL AND SEED PEARL VINAIGRETTE, GEORGES RÉMOND & CIE, GENEVA, 1805-1815

of lozenge form, with hinged lid, the sides and base with panels of blue guilloché enamel within champlevé border, the lid enameled with a portrait of a winged angel, the pierced interior grill engraved with leafy scrolls; *with the maker's mark of Georges Rémond & Cie., the rim with later French ET import mark for countries without customs conventions; length: 1 3/4in.*

\$6,000 - 8,000

7

A FINE GOLD AND ENAMEL MINIATURE SNUFF BOX, MOULINIÉ BAUTTE & CIE, GENEVA, CIRCA 1804-1808

of rectangular outline, with hinged lid, the sides and base with panels of red guilloché enamel within a champlevé border, the lid further enameled with a reclining putto; *with the maker's mark of Moulinié Bautte & Cie., Geneva, 1804 – 1808, the rim with later French owl import mark for countries without customs conventions; length: 1 1/4in.*

\$2,500 - 3,500

Jean-François Bautte (1772 – 1837) was associated with Jacques-Dauphin Moulinié and Jean-Gabriel Moynier from 1804 until 1826. Their large workshop produced both jewelry and watches in finely enameled and jeweled cases.

8

A FINE AND RARE LOUIS XVI GOLD AND ENAMEL PRESENTATION SNUFF BOX, JACQUES-FELIX VIENOT, ENAMEL SIGNED BY JACQUES THOURON, 1787/1788

of oval outline, the hinged lid finely painted with the Birth of Venus signed by Theuron and dated 1787 within a border of seed pearls, the sides with applied urns and floral swags on panels of blue enamel; the interior of the lid engraved with the monogram of the Dutch East India Company and inscribed "Behouden Convooy binnen Texel den 21 Jun'y 1793" presumably for the safe return of the company's ships to the home port of Texel; *with the maker's mark of Jacques-Felix Vienot (fl. 1785-1806), Paris 1787/1788, with the charge and petit decharge marks of Henri Clavel 1782-1789 and the restricted warranty mark 1838-1847; length: 3 1/8in.; width: 2 1/2in.*

\$15,000 - 18,000

Jacques Thouron (1749-1789), considered one of the finest 18th century miniaturists on enamel, was born in Geneva to a family of Protestant emigré goldsmiths. At the age of 15, he was apprenticed to the enamel painter Pierre François Marcinhès. He then moved to Paris and in 1772 joined the workshop of Jean-François Favre. Around 1780 he became miniature painter to Monsieur (the brother of Louis XVI and the future Louis XVIII.) He exhibited miniatures after Rubens, Greuze and others at the Salons of 1781 and 1782. His clientele included the French aristocracy and notables from the Arts, Literature and Politics. He died prematurely just after his fortieth birthday; and there are only few surviving examples of his work. 19th century critics considered him on par with Petitot.



8



9



10



11

9

AN 18K GOLD AND ENAMEL SCENT FLASK, LAST QUARTER OF THE 19TH CENTURY

of tapered oval outline with hinged lid, the body enameled with scenes of putti within border of grotesque ornament, suspended from a finger ring by two short gold chains; with French "owl" import mark; length: 3 1/8in.

\$7,000 - 9,000

10

AN ENAMEL, 18K GOLD AND PEARL SCENT FLASK

tapered oval with hinged lid, the body enameled with foliate scenes within an ornate border, to a snake cap, suspended from an enamel and seed pearl bar chain; length: 2 1/8in.

\$4,000 - 6,000

11

A TRI-COLORED GOLD SNUFF BOX, JEAN-GEORGES RÉMOND & COMPANY, GENEVA, CIRCA 1795

of oval outline, the hinged lid with applied tri-colored wreath enclosing engine turned panel enhanced with Trophy of Abundance, the similar paneled sides and base engraved with scrolls and urns; signed with maker's mark of Jean-Georges Rémond & Company; length: 2 3/4in.; width: 1 3/4in.

\$3,000 - 5,000

12

A FROSTED-CUT GLASS AND LAPIS LAZULI SCENT FLASK WITH PENDANT CHAIN

tapered oval flask within vari-colored gold scroll mounts, with rising loop handles above leafy swags continuing to a bud drop, hinged lid with lapis lazuli finial and thumb piece, completed by a gold chain set at intervals with lapis lazuli beads; unmarked, last quarter of the 19th century; length: 6 3/4in.

\$3,000 - 5,000



12



13

13

A SPINEL AND DIAMOND BROOCH

centering a cut-cornered rectangular-shaped spinel, weighing approximately 8.80 carats, framed by old European-cut diamonds, accented by single-cut diamonds; *estimated total diamond weight: 4.00 carats; mounted in silver-topped 18k gold; width: 1in.*

\$8,000 - 12,000



14

14

A PAIR OF DIAMOND BRACELETS

of floral and foliate design, set with rose, old mine and old European-cut diamonds; can be assembled and worn as a choker; *estimated total diamond weight: 40.60 carats; mounted in silver topped 14k gold; length: 7 1/2 and 7 1/8in.*

\$60,000 - 80,000



15



16



17

PROPERTY OF ANOTHER COLLECTOR

16

A RUBY AND DIAMOND RING

centering an antique cushion-shaped mixed-cut ruby, weighing 1.75 carats, framed by round brilliant-cut diamonds; *estimated total diamond weight: 1.00 carat; mounted in 14k silver-topped gold; size 8*

\$18,000 - 25,000

Accompanied by SSEF report # 61681, dated January 5, 2012, stating the ruby as: Burmese (Myanmar) origin, no indications of heat or clarity enhancement.

PROPERTY FROM A NORTHERN CALIFORNIA COLLECTOR

15

A COMPANION PAIR OF DIAMOND BOW BROOCHES

each designed as a double-loop bow, terminating in fluttering ribbons, set throughout with old European-cut diamonds; *estimated total diamond weight: 20.00 carats; mounted in silver-topped 18k gold; length: 2 3/8in. and 2 1/8in.*

\$10,000 - 15,000

PROPERTY OF A LONDON SOCIALITE

17

A DIAMOND BRACELET

of stylized foliate design, set throughout with single, rose and old mine-cut diamonds; *estimated total diamond weight: 16.00 carats; mounted in silver-topped 14k gold; length: 7in.*

\$6,000 - 8,000



18



19



20

PROPERTY OF VARIOUS OWNERS

18

AN ART DECO ENAMEL AND 18K GOLD LIPSTICK CASE, BOUCHERON, CIRCA 1920

cylindrical, the body with Chinese riverbank landscape; *signed Boucheron, Paris; accompanied by a fitted box; length: 2in.*

\$1,500 - 2,500

19

AN ART DECO ENAMEL, DIAMOND, CULTURED PEARL AND 18K GOLD LIPSTICK CASE, LACLOCHE FRÈRES, CIRCA 1925

cylindrical, capped at each end with a pearl and band of rose-cut diamonds, the body with Chinese riverbank landscape; *signed Lacloche Frères, Paris, 74000; length: 2 1/2in.*

\$4,000 - 6,000

20

AN ART DECO 18K GOLD AND ENAMELED VANITY CASE, MARZO, CIRCA 1920

of rectangular outline, the black enamel body with a rose-cut diamond cartouche and thumb piece, opening to reveal a powder compartment, lipstick holder and mirror; *signed Marzo, Paris, with maker's mark and French hallmark; length: 2 5/8in.*

\$2,000 - 3,000

21

**AN ART DECO ENAMEL, 18K GOLD AN DIAMOND COMPACT,
LACLOCHE FRÈRES, CIRCA 1920**

the rectangular red enamel with hinged twin door secured by 'shou' diamond clasp, opening to reveal a champlevé enameled Chinese garden scene panel, hinged to conceal a mirror; *signed Lacloche Frères, Paris, with London import mark for 1926; reference 70310, 7405; length: 1 3/4in.*

\$5,000 - 7,000



21 (additional view)



21





22



24



23



25

22

A RUBY AND DIAMOND RING

centering an oval-shaped mixed-cut ruby, weighing 1.56 carats, flanked by old European-cut diamonds; *estimated total diamond weight: 1.30 carats; mounted in platinum; size 5 3/4*

\$30,000 - 50,000

Accompanied by AGL report # 1083987, dated May 19, 2017, stating the ruby as: Burmese (Myanmar) origin, no indications of heat or clarity enhancement.

23

AN ART DECO DIAMOND RING, CIRCA 1925

centering a round brilliant-cut diamond, weighing 4.12 carats, set within an ornate setting, accented by similarly cut diamonds; *mounted in platinum; size 5 3/4*

\$100,000 - 125,000

Accompanied by GIA report # 2185746489, dated September 19, 2017, stating the diamond as: D color, VVS2 clarity.

24

A DIAMOND RING

centering a rectangular-shaped diamond, weighing 4.56 carats, accented by square-shaped diamond shoulders; *mounted in platinum; size 3 1/4*

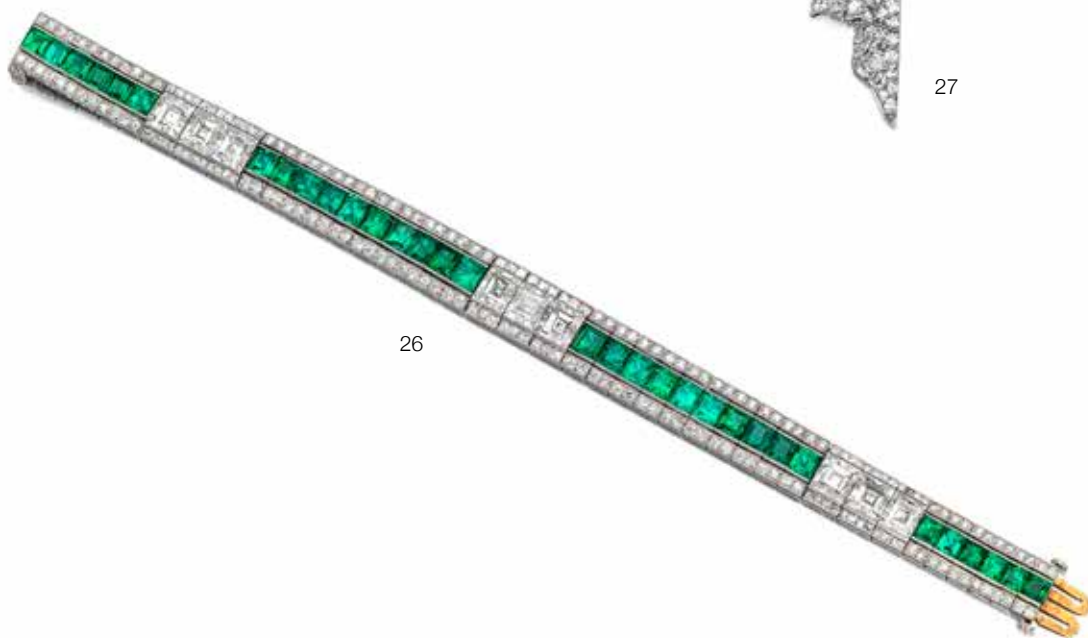
\$12,000 - 15,000

25

AN ART DECO JADEITE JADE, DIAMOND AND ENAMEL JABOT PIN, CARTIER, CIRCA 1925

set with a carved jadeite jade plaque, measuring approximately 37.6 x 9.4 x 2.9mm, highlighted with single and round brilliant-cut diamonds, with red enamel accents; *signed Cartier; estimated total diamond weight: 2.25 carats; mounted in platinum; length: 3 1/8in.*

\$6,000 - 8,000



26

26

AN ART DECO EMERALD AND DIAMOND BRACELET, CIRCA 1925

the articulated geometric strap, centrally set with calibr -cut emeralds within a millegrain channel setting, between two rows of square and round brilliant-cut diamonds, centrally accented by square-shaped diamonds; *estimated total diamond weight: 12.00 carats; mounted in platinum; length: 6 5/8in.*

\$30,000 - 50,000



27

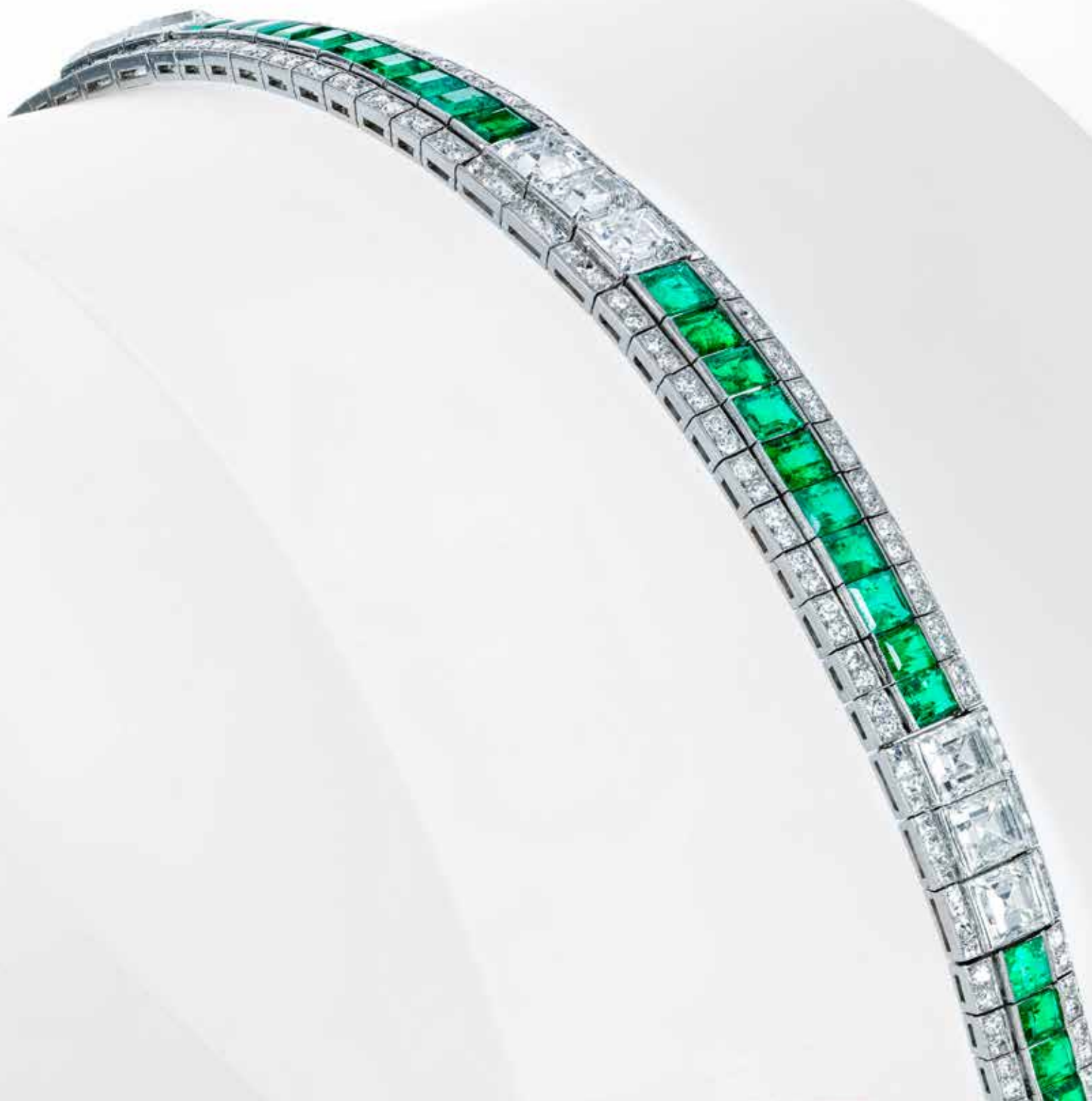
27

AN ART DECO DIAMOND BOW BROOCH, LACLOCHE, CIRCA 1925

designed as a stylized bow, composed of flexible links, set throughout with single and round brilliant-cut diamonds, accented with baguette-cut diamonds; *signed La Cloche, F.S., Paris, no.73851, with maker's mark and French assay mark; estimated total diamond weight: 6.45 carats; mounted in platinum; length: 2 1/8in.*

\$5,000 - 7,000

PROPERTY OF A LONDON SOCIALITE





28



29



30

PROPERTY OF VARIOUS OWNERS

28
AN ART DECO DIAMOND AND ONYX JABOT PIN, CARTIER, CIRCA 1920
designed as an openwork feather, millegrain-set with single and round brilliant-cut diamonds, accented by a line of calibré-cut onyx; *signed Cartier, no.1330, no.1075, no.2015; estimated total diamond weight: 1.65 carats; mounted in platinum; length: 3 15/16in.*

\$4,000 - 6,000

29
A DIAMOND BRACELET
of geometric design, composed of two articulate panels, pavé-set with single, old European and round brilliant-cut diamonds, spaced by openwork pavé-set diamond links; *estimated total diamond weight: 15.00 carats; mounted in platinum; length: 7 3/4in.*

\$15,000 - 20,000

PROPERTY FROM AN ISLAND PARK, ILLINOIS FAMILY

30
AN ART DECO DIAMOND AND SAPPHIRE BRACELET, CIRCA 1925
designed as a belt, composed of a single line of old European-cut diamonds, within a border of calibré-cut sapphires, the buckle accented by single and rose-cut diamonds; *estimated total diamond weight: 7.15 carats; mounted in platinum; length: 6 13/16in.*

\$7,000 - 9,000



31



32



33

PROPERTY OF VARIOUS OWNERS

31
A DIAMOND AND SAPPHIRE RING
 centering two round brilliant-cut diamonds, weighing approximately 1.60 and 1.55 carats, within an openwork setting of single and round brilliant-cut diamonds, accented by calibré-cut sapphires; *mounted in platinum; size 8 1/4*

\$8,000 - 10,000

32
AN ART DECO DIAMOND AND EMERALD RING, CIRCA 1925
 centering an old European-cut diamond, weighing approximately 3.20 carats, accented by calibré-cut emeralds, with baguette-cut diamond sides, to single-cut diamond-set shoulders; *mounted in platinum; size 5*

\$15,000 - 25,000

33
A TRIO OF DIAMOND, SAPPHIRE AND RUBY BANGLE BRACELETS
 designed as three channel-set bands, one composed of round brilliant-cut diamonds, one composed of calibré-cut sapphires and the other with calibré-cut rubies; *estimated total diamond weight: 4.50 carats; mounted in platinum; circumference: 8 1/8in.*

\$6,000 - 8,000



PROPERTY FROM THE ESTATE OF MARY CLARK THOMPSON

34

A NATURAL PEARL AND DIAMOND DROP PENDANT

composed of a single drop pearl, measuring 14.1mm, to a rose-cut diamond surmount; *mounted in platinum; length: 1 1/4in.*

\$30,000 - 50,000

Accompanied by GIA report # 2183713732, dated September 26, 2017, stating the pearl as: Natural, Saltwater, no indications of treatment.

Accompanied by special letter from GIA, dated September 26, 2017, concerning the 23.30 x 14.12mm Natural, Saltwater Natural Pearl, from report # 2183713732.

Accompanied by SSEF report #96487, dated November 2, 2017, stating the pearl as: Natural, Saltwater.

Accompanied by an Appendix Letter from SSEF, dated November 2, 2017, stating: "A natural pearl of this size and quality can be considered rare and exception."

Born and raised in New York State, Thompson was the daughter of Myron Holley. Holley was elected Governor of New York State in 1855. At that time the family took up residence in Albany and that is where she met her future husband, Frederick Ferris Thompson. The couple married in 1857 in Canandaigua, New York. The Thompsons became generous benefactors to many organizations and established themselves as philanthropists. Mrs. Thompson was one of the founders of the Metropolitan Museum of Art and a great benefactor to the Bronx Zoo. After the death of her husband in 1899, she continued to donate generously to civic, religious, health and educational institutions including Williams, Vassar and Teachers Colleges. She established and built the F.F. Thompson Hospital in 1903.

Mary Clark Thompson also had an interest in preserving the history of Native Americans in the New York area. She had a love of plants and flowers which are reflected in any one of her nine formal gardens at her summer home in Sonnenberg and often opened them for public enjoyment. She died in July 1923 at the age of 87. Today, her summer home, Sonnenberg Gardens & Mansion State Historic Park, is preserved and operated as a museum. The Mary Clark Thompson Medal is named in her honor. It has been awarded since 1921 and honors work in geology and paleontology.





36



35



37

PROPERTY OF ANOTHER OWNER

35

AN ART DECO DIAMOND AND SAPPHIRE BROOCH, CIRCA 1920

of abstract design, set with alternating fancy-cut sapphires and diamonds; *signed MD, no.8446, with maker's mark for Charles Holl and French assay mark; estimated total diamond weight: 1.35 carats; mounted in platinum; length: 2 13/16in.*

\$5,000 - 7,000

PROPERTY FROM THE ESTATE OF MARY CLARK THOMPSON

36

AN EXQUISITE EDWARDIAN DIAMOND BRACELET, CIRCA 1910

of floral motif, centering an octagonal-shaped diamond, weighing approximately 3.75 carats, to a line of pear-shaped diamonds, within a millegrain openwork frame; *estimated remaining diamond weight: 18.00 carats; mounted in platinum; length: 7 1/16in.*

\$50,000 - 70,000

PROPERTY FROM THE ESTATE OF ROSEMARY DONOHUE

37

AN ART DECO EMERALD AND DIAMOND RING, CIRCA 1925

centering a triangular-shaped step-cut emerald, weighing approximately 3.70 carats, accented by calibré-cut emeralds, old European and baguette-cut diamonds, set overall in an asymmetrical mount; *estimated total diamond weight: 2.10 carats; mounted in platinum; size 6*

\$7,000 - 9,000

Accompanied by AGL report # CS 1079264, dated October 21, 2016, stating the central emerald as: Colombian origin, indications of insignificant, traditional clarity enhancement.





38



39

PROPERTY OF ANOTHER COLLECTOR

38

AN AMETHYST AND DIAMOND PENDANT NECKLACE

centering a navette-shaped amethyst, weighing 42.30 carats, within an openwork surround, set throughout with old European-cut diamonds; *estimated total diamond weight: 8.00 carats; mounted in platinum; length: 16 1/2in.*

\$5,000 - 7,000

PROPERTY OF A LONDON SOCIALITE

39

A PAIR OF DIAMOND EAR CLIPS

composed of a double row of baguette and round brilliant-cut diamonds; *with French assay mark; accompanied by a fitted box; estimated total diamond weight: 3.00 carats; mounted in platinum; length: 13/16in.*

\$5,000 - 8,000



PROPERTY OF VARIOUS OWNERS

40

A DIAMOND “TOI ET MOI” RING

centering two old European-cut diamonds, weighing 2.46 and 2.35 carats, accented by round brilliant-cut diamonds; *mounted in platinum; size 3*

\$10,000 - 15,000

41

A NATURAL PEARL AND DIAMOND PENDANT NECKLACE

the chain composed of alternating rectangular and circular-shaped disks, accented with single-cut diamonds, interspersed with baroque-shaped pearls, suspending at the front a pendant of similar design, terminating in a large baroque natural pearl drop, measuring 15.5 x 12.9mm; *estimated total diamond weight: 2.75 carats; mounted in platinum; length: 15 1/4in.*

\$12,000 - 18,000

Accompanied by GIA report # 1182431610, dated May 23, 2017, stating the 45.13 grams pearl as: Natural, Saltwater, no indications of treatment.

41



PROPERTY OF A BEVERLY HILLS, CALIFORNIA COLLECTOR

42

A DIAMOND DIADEM

designed with graduating foliate motifs with garland and fan accents, set throughout with old mine, old European, old single and rose-cut diamonds; accompanied by a fitted box; larger old European-cut diamonds weighing an estimated 1.15 and 1.05 carats; estimated total diamond weight: 19.00 carats; mounted in platinum; length: 5 3/4in.

\$30,000 - 50,000





44

43

PROPERTY OF ANOTHER OWNER

43

A CULTURED PEARL AND DIAMOND NECKLACE

designed as an array of graduated colored pearls, measuring from approximately 16.8 to 13.1mm, to a circular clasp, accented with round brilliant-cut diamonds; *estimated total diamond weight: 2.05 carats; mounted in 18k gold; length: 18in.*

\$9,000 - 12,000

PROPERTY OF A BEVERLY HILLS, CALIFORNIA COLLECTOR

44

A DIAMOND RING

centering a round brilliant-cut diamond, weighing 3.15 carats, framed by a floral motif of similarly cut diamonds; *estimated total diamond weight: 3.50 carats; mounted in 14k rose gold; size 8 1/4*

\$50,000 - 70,000

Accompanied by GIA report # 2185850776, dated October 26, 2017, stating the diamond as: D color, VS1 clarity.





45



46



PROPERTY OF VARIOUS OWNERS

45

A FABRIC AND GEM-SET CLUTCH, VAN CLEEF AND ARPELS, CIRCA 1960

embroidered with silver-gilt wire, set with cabochons of various gemstones, including quartz, sapphires, citrine and emeralds; *signed Van Cleef & Arpels, no.16757; length: 7 7/8in.*

\$7,000 - 9,000

This lot is being offered by Goodwill Southern Los Angeles County (SOLAC). Since 1929 Goodwill SOLAC's mission has been to transform lives through the power of work. Serving individuals with barriers to employment, as well as businesses, by providing education, training, work experience and job placement services in a culturally diverse and growing community.

46

AN 18K GOLD, DIAMOND AND GEM-SET MINAUDIÈRE CASE, VENTRELLA

the rectangular case with a central jeweled bouquet of diamonds, rubies, citrine and sapphires, opening with an ornate clasp of rectangular-shaped citrines and round brilliant-cut diamonds, to reveal a mirror and six compartments; *signed Ventrella Roma; accompanied by a signed box; gross weight approximately: 705.20 grams; length: 5 1/2*

\$18,000 - 25,000

47

A RUBY AND DIAMOND BRACELET

the band of flexible design, composed of cabochon rubies and round brilliant-cut diamonds; *estimated total diamond weight: 12.75 carats; mounted in platinum and 18k gold; length: 7 1/8in.*

\$15,000 - 20,000

48

A RETRO 18K ROSE GOLD, PLATINUM, DIAMOND AND RUBY BRACELET, BULGARI

articulated belt strap design, composed of brick link, the buckle decorated with round brilliant-cut diamonds, accented by circle-cut rubies, to a clasp of similarly cut diamonds; *signed Bvlgari; gross weight approximately: 152.00 grams; length: 9in.*

\$20,000 - 30,000

PROPERTY OF A LADY

49

A THREE-STONE DIAMOND RING, PETER LINDEMAN

centrally set with rose-cut diamonds; *with maker's mark; estimated total diamond weight: 2.80 carats; mounted in platinum and 24k gold; size 6*

\$4,000 - 6,000



PROPERTY OF VARIOUS OWNERS

50

**A DIAMOND, RUBY AND 14K GOLD
“LUDO” BRACELET, VAN CLEEF AND
ARPELS, CIRCA 1940**

the highly articulated band of brick link, adorned with a clasp of floral clusters set with round-cut rubies and round brilliant-cut diamonds, the buckle composed of a line of similarly cut rubies; *signed Van Cleef & Arpels, N.Y., no.6799; gross weight approximately: 56.00 grams; length: 8 5/8in.*

\$8,000 - 12,000

51

**AN 18K GOLD, LAPIS LAZULI AND ROCK
CRYSTAL QUARTZ BRACELET, CARTIER,
CIRCA 1940**

designed as a series of pierced square rock crystal quartz links, alternating with sugarloaf cabochon lapis lazuli; *signed Cartier, no.02533, with French assay mark; accompanied by signed box; length: 7 3/4in.*

\$10,000 - 15,000

52

**A DIAMOND “CAPILLAIRE” BROOCH,
VAN CLEEF & ARPELS, 1957**

designed as a spray of flowers, set with round brilliant-cut diamonds; *signed VC&A., no.29060; estimated total diamond weight: 8.20 carats, mounted in 18k gold; length: 2 5/16in.*

\$15,000 - 20,000





PROPERTY FROM A NEW YORK COLLECTOR

53

AN 18K GOLD NECKLACE, ANGELA CUMMINGS

composed of openwork stylized 'Judas Tree' leaves; signed
Cummings; gross weight approximately: 74.70 grams; length: 15 3/8in.

\$8,000 - 12,000



54

55

PROPERTY OF A LADY

54

AN 18K GOLD AND DIAMOND BRACELET, PETER LINDEMAN

a graduated band of textured gold of 'moon crater' motif, accented throughout with round brilliant-cut diamonds; *with maker's mark*; *estimated total diamond weight: 8.75 carats*; *length: 7 1/8in.*

\$8,000 - 12,000

Peter Lindeman, born in German, immigrated to Uruguay with his family, before moving to New York at the age of 17 in 1947. His father was a jeweler and he learned his craft working at the bench the old fashioned way from father to son. After apprenticing, then working for several fine retailers including – Tiffany & Co., Bailey, Banks & Biddle, and Shreve Crump and Low, Lindeman went into business for himself.

For more than fifty years, Lindeman has been creating wearable, stylish jewelry that has stood the test of time and is collectible. His own creations from the 1960's forward bare his hallmark and reflect his continued commitment to quality, style and craftsmanship. His repertoire is vast and creative and sometimes humorous, ranging from a realistic gem-set bee to rough diamond and emerald crystal ring. More often than not, he prefers to express his designs with texture and color. Well recognized by his peers for his creativity, Lindeman has received numerous awards; and in 1975, his "Moon Crater" bracelet, lot 54, brought accolades from The Diamond Information Center. DeBeers commissioned Peter Lindeman to create a diamond and gold tennis racket brooch in the 1970's which he presented to Chris Evert.

Today, his unique creations are found in private and museum collections.

55

A COMPANION PAIR OF 18K GOLD, RUBY AND DIAMOND BANGLE BRACELETS, PETER LINDEMAN

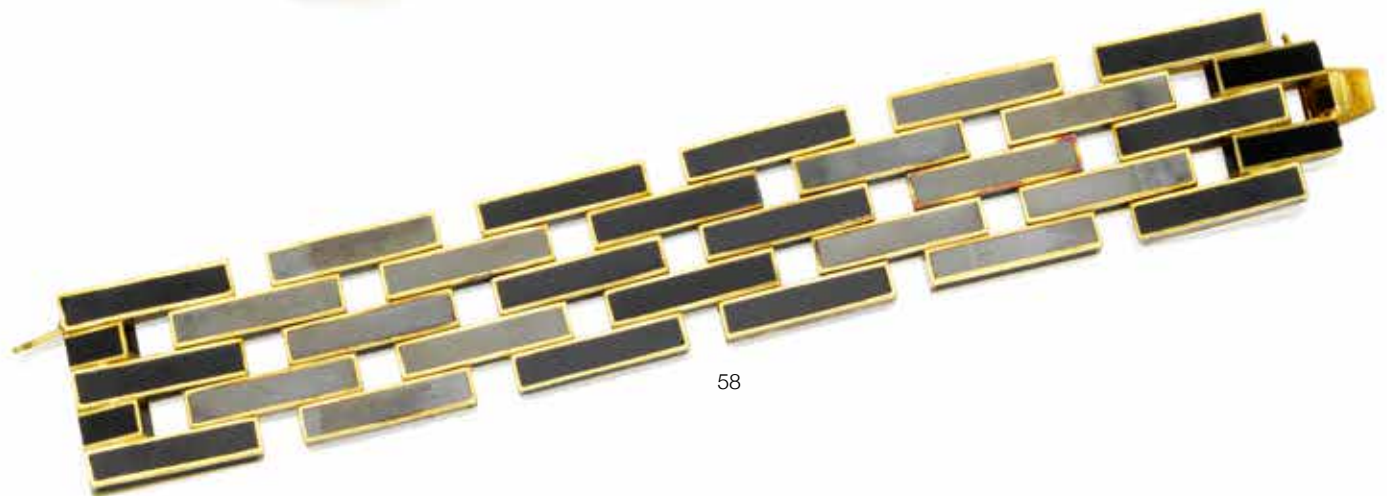
the hinged bangle of textured finish, bezel-set with oval-shaped rubies and round brilliant-cut diamonds; *with maker's mark*; *estimated total diamond weight: 3.50 carats*; *gross weight approximately: 85.40 grams*; *circumference: 6 1/8in.*

\$10,000 - 15,000



56

57



58

PROPERTY OF VARIOUS OWNERS

56

AN 18K GOLD BRACELET, BURCH KORRODI, CIRCA 1960

a highly flexible band composed of open rectangular shaped links; *signed Burch*; accompanied by signed box; gross weight approximately: 172.80 grams; length: 7 7/8in.

\$7,000 - 9,000

57

AN ALEXANDRITE RING

set with a rectangular-shaped emerald-cut alexandrite, weighing 7.76 carats; *mounted in platinum and 18k gold*; size 8 1/2

\$12,000 - 18,000

Accompanied by AGL report # 1086954, dated September 7, 2017, stating the alexandrite as: Ceylon (Sri Lanka) origin, no indications of heat or clarity enhancement.

PROPERTY FROM A NEW YORK COLLECTOR

58

AN 18K GOLD AND HEMATITE BRACELET, ATTRIBUTED TO TIFFANY & CO.

of brickwork design, composed of highly flexible hematite links; gross weight approximately: 101.00 grams; length: 6 3/4in.

\$1,500 - 2,500



59

**A CARNELIAN AND 18K GOLD “LENTIL”
NECKLACE WITH EARRINGS EN SUITE,
ANGELA CUMMINGS FOR TIFFANY &
CO., CIRCA 1980**

composed of a single graduated strand of
disk shaped carnelian links, accented by 18k
gold slivers, accompanied by a pair of similarly
styled ear clips; *signed T&Co; gross weight
approximately: 101.00 grams; length: 24in.;
earring length: 3/4in.*

\$5,000 - 7,000



60



61

60

A COMPANION PAIR OF 18K GOLD AND DIAMOND COLLAR NECKLACES

of highly flexible design, decorated in the front with round brilliant-cut diamonds; *estimated total diamond weight: 6.90 carats; gross weight approximately: 216.30 grams; circumference: 12 1/4in. and 12 1/2in. (flexible)*

\$8,000 - 12,000

61

A PAIR OF 18K GOLD AND DIAMOND EAR CLIPS

of door knocker design, accented throughout by round brilliant-cut diamonds; *estimated total diamond weight: 13.00 carats; length: 1 3/8in.*

\$8,000 - 12,000



PROPERTY OF VARIOUS OWNERS

62

A RUBY AND DIAMOND BROOCH, VAN CLEEF AND ARPELS

composed of three three-dimensional disks of floral design, each centrally set with a round-shaped ruby, the polished gold petals accented with similarly cut rubies and round brilliant-cut diamonds; *signed Van Cleef & Arpels, no. NY11423, with French assay mark; mounted in 18k gold; length: 1 1/4 in.*

\$5,000 - 7,000

63

A 14K GOLD AND DIAMOND MINAUDIÈRE, CARTIER

the rectangular case decorated on the cover with Venetian masks, outlines with single-cut diamonds, the rectangular-cut diamond clasp opens to reveal a fitted interior with mirror, removable comp, lipstick holder, powder box, brush and pill compartments; *signed Cartier; estimated total diamond weight: 1.30 carats; gross weight approximately 596.10 grams; length: 6 1/4 in.*

\$18,000 - 22,000

64

A SAPPHIRE, DIAMOND AND ENAMEL RING

centering a cushion-shaped modified step-cut sapphire, weighing approximately 12.90 carats, framed by rose-cut diamonds, accented by a blue enamel border and side shank detail; *estimated total diamond weight: 2.00 carats; mounted in 14k gold; size 7 1/2*

\$10,000 - 15,000

Accompanied by AGL report # 1087328, dated October 12, 2017, stating the sapphire as: Ceylon (Sri Lanka) origin, no indications of heat or clarity enhancement.



65

65
AN 18K GOLD AND DIAMOND “DELILAH” NECKLACE, BOUCHERON

designed as a scarf, of woven mesh design with tasseled ends accented with brilliant-cut diamonds; *signed Boucheron; accompanied by a signed box; estimated total diamond weight: 1.10 carats; gross weight approximately: 208.40 grams; length: 46in.*

\$12,000 - 18,000

Accompanied by a booklet of authenticity from Boucheron, dated November 11, 2004.

PROPERTY OF A BEVERLY HILLS, CALIFORNIA COLLECTOR

66
A PAIR OF DIAMOND AND GEM-SET EAR CLIPS, CARTIER

of spherical design, set throughout by rows of round-shaped sapphires, emeralds and rubies, to a central point, accented by a round brilliant-cut diamond; *signed Cartier, no. 1424; mounted in 18k gold; length: 1in.*

\$10,000 - 15,000

PROPERTY OF VARIOUS OWNERS

67
A SAPPHIRE AND 18K GOLD RING, SCHLUMBERGER FOR TIFFANY & CO.

centering an oval-shaped cabochon sapphire, weighing 12.06 carats, bezel set within a brushed gold setting; *signed Tiffany, Schlumberger; gross weight approximately 22.20 grams; size 11 1/2*

\$30,000 - 50,000

Accompanied by AGL report # CS 1076594, dated June 24, 2016, stating the sapphire as: no indications of heat or clarity enhancement.

68
A DIAMOND RING, BULGARI

centrally set with three bezel-set rectangular-shaped diamonds; *signed Bvlgari; estimated total diamond weight: 2.25 carats; mounted in 18k gold; size 6 3/4*

\$10,000 - 15,000



66

67

68



69



70

69

A GOLD COIN CHARM BRACELET

the double spiral link chain suspending nine gold coins, dated between 1848 and 1963; *gross weight approximately: 199.00 grams; mounted in 18k and 14k gold; length: 9in.*

\$10,000 - 15,000

70

A STAR SAPPHIRE AND DIAMOND RING, BULGARI

of "evil eye" motif, centering a double cabochon star sapphire, weighing 28.82 carats, accented by round-cut sapphires and round brilliant-cut diamonds; *signed Bulgari; accompanied by a signed box; estimated total diamond weight: 1.80 carats; mounted in 18k gold; size 5 1/4*

\$20,000 - 25,000



71



72



73

PROPERTY OF A LADY

**71
A DIAMOND AND RUBY “PAGODA” RING,
PETER LINDEMAN**

designed as a stylized pagoda, set throughout with round brilliant-cut diamonds, accented with round-cut rubies; *with maker's mark; estimated total diamond weight: 2.50 carats; mounted in 18k rose gold; size 5 1/2*

\$4,000 - 6,000

PROPERTY OF VARIOUS OWNERS

**72
AN 18K GOLD “HAPPY DIAMOND”
NECKLACE, CHOPARD**

centering a transparent compartment with five ‘floating’ diamonds, framed by a heart-shaped plaque set with round brilliant-cut diamonds, to a brick-link back chain; *signed Chopard, Geneva; estimated total diamond weight: 1.80 carats; gross weight approximately: 124.20 grams; length: 17in.*

\$10,000 - 15,000

**73
A PAIR OF 18K GOLD AND “HAPPY
DIAMOND” EAR CLIPS, CHOPARD**

centrally set with a transparent compartment with three ‘floating’ diamonds, framed by a heart-shaped plaque set with round brilliant-cut diamonds; *signed Chopard, no.9604387; estimated total diamond weight: 2.45 carats; width: 7/8in.*

\$5,000 - 7,000



74

75

76

74

A DIAMOND PENDANT

set with a round brilliant-cut diamond, weighing 3.39 carats; mounted in 14k gold; length: 1 1/4in.

\$25,000 - 35,000

Accompanied by GIA report # 2185646681, dated August 7, 2017, stating the diamond as: G color, SI1 clarity.

75

A DIAMOND AND 18K GOLD "GALAXY" COLLAR NECKLACE, HERMÈS

designed as jointed gold scrolled bars, decorated at the front with round brilliant-cut diamond accents; signed *Hermès*, with French assay mark; estimated total diamond weight: 3.90 carats; length: 14 7/8in.

\$6,000 - 8,000

76

A VIOLET SAPPHIRE RING, CARVIN FRENCH

centering an oval-shaped mixed-cut violet sapphire, weighing 5.99 carats; with maker's mark; mounted in 18k gold; size 5 1/2

\$6,000 - 9,000

Accompanied by AGL report # CS 72218, dated December 22, 2015, stating the sapphire as: Madagascan origin, no indications of heat or clarity enhancement.



77



78



79

77

A VIOLET SAPPHIRE RING, CARVIN FRENCH

centering an oval-shaped cabochon violet sapphire, weighing 12.50 carats, to a braided shank, pavé-set with round brilliant-cut diamonds; *with maker's mark; mounted in 18k gold; size 6 1/2*

\$6,000 - 9,000

Accompanied by AGL report # CS 71626, dated November 24, 2015, stating the sapphire as: Ceylon (Sri Lanka) origin, no indications of heat or clarity enhancement.

78

A FANCY COLORED DIAMOND AND DIAMOND BRACELET

designed as a graduated articulated band, with fancy-shaped yellow diamonds, accented by marquis and square-shaped diamonds; *estimated total diamond weight: 39.60 carats; mounted in 18k gold; length: 6 7/8in.*

\$25,000 - 35,000

Accompanied by GIA report # 218587258, dated November 1, 2017, stating the diamonds (three tested) as: Natural Color.

79

A PAIR OF COLORED DIAMOND AND DIAMOND FLOWER EARRINGS

each designed as a single bloom, centering a cluster of marquise-cut diamonds, to a round brilliant-cut diamond, the petals pavé-set with round brilliant-cut yellow diamonds; *estimated total diamond weight: 8.95 carats; mounted in 18k bi-color gold; diameter: 1 1/4in.*

\$18,000 - 25,000

Accompanied by GIA report # 218587267, dated November 1, 2017, stating the diamonds (four tested) as: Natural Color.



80

81

80

A DIAMOND RING

centering a round brilliant-cut diamond, weighing 6.00 carats, flanked by tapered baguette-cut diamonds; *mounted in 14k white gold; size 3 1/2*

\$25,000 - 35,000

81

A DIAMOND BRACELET

designed as a flexible line of vari-cut diamonds, framed by round brilliant-cut diamonds; *estimated total diamond weight: 13.85 carats; mounted in 18k gold; length 7 3/16in.*

\$12,000 - 18,000

82

A COLORED DIAMOND AND DIAMOND NECKLACE

designed as a cascade of diamonds, centrally set with rectangular-shaped colored and Fancy Yellow diamond plaques, framed by round brilliant-cut diamonds; *estimated diamond weight: 8.85 carats; estimated colored diamond weight: 92.50 carats; mounted in 18k gold; length: 15in.*

\$180,000 - 250,000

Accompanied by GIA report # 1182631770, dated August 07, 2017, stating the 1.89 carats diamond as: Fancy Brownish Yellow color, VVS2 clarity.

Accompanied by GIA report # 5181631759, dated August 03, 2017, stating the 1.88 carats diamond as: Fancy Light Brownish Yellow color, SI2 clarity.

Accompanied by GIA report # 2183631653, dated August 07, 2017, stating the 1.59 carats diamond as: Fancy Brownish Yellow color, VS1 clarity.

Accompanied by GIA report # 1182632697, dated August 07, 2017, stating the 1.26 carats diamond as: Fancy Brownish Yellow color, VVS2 clarity.

Accompanied by GIA report # 2185631730, dated August 03, 2017, stating the 1.15 carats diamond as: Fancy Yellow color, VVS2 clarity.

Accompanied by GIA report # 6187631667, dated August, 04 2017, stating the 1.03 carats diamond as: Fancy Brownish Yellow color, VS2 clarity.







84



85

PROPERTY FROM A PRIVATE COLLECTOR

83 AN 18K GOLD, DIAMOND AND GEM-SET NECKLACE WITH CONVERTIBLE ELEMENTS

composed of polished gold ridged links, to form a collar necklace, centering five interchangeable gemstones, including tourmaline, tanzanite, aquamarine and quartz of abstract design, accented by round brilliant-cut diamonds; can also be adapted and worn as brooches; *estimated total diamond weight: 8.70 carats; gross weight approximately: 730.20 grams; circumference: 14 1/4in. (adjustable)*

\$30,000 - 50,000

84 A SAPPHIRE AND DIAMOND RING

centering a cut-cornered rectangular-shaped sapphire, weighing approximately 5.80 carats, within a round brilliant-cut diamond surround; *estimated total diamond weight: 1.40 carats; mounted in platinum; size 6 1/2*

\$8,000 - 10,000

Accompanied by an AGL report # 1088163, dated November 3, 2017, stating the sapphire as: Ceylon (Sri Lanka), heated.

85 A COLLECTION OF DIAMOND AND GEM-SET 18K GOLD AND PLATINUM BANGLE BRACELETS

composed of four bangles, two composed with square-cut diamond accents, one with calibré-cut emeralds, the other sapphires, one with calibré-cut rubies, and the other with channel-set yellow diamonds; *estimated total diamond weight: 5.70 carats; gross weight approximately: 155.40 grams; diameter: 2 15/16in.*

\$25,000 - 30,000



86



87

PROPERTY OF VARIOUS OWNERS

86

A SAPPHIRE AND DIAMOND RING/PENDANT

centering a square cushion-shaped mixed-cut sapphire, weighing approximately 11.50 carats, within a ballerina surround of tapered baguette and round brilliant-cut diamonds; *estimated total diamond weight: 2.35 carats; mounted in 18k gold; size 4 1/2*

\$15,000 - 20,000

Accompanied by AGL report # 1087713, dated October 13, 2017, stating the sapphire as: Ceylon (Sri Lankan) origin, no indications of heat or clarity enhancement.

87

A DIAMOND AND 18K BI-COLOR GOLD NECKLACE

designed as articulated links of scroll motif, set with single-cut diamonds; *estimated total diamond weight: 9.45 carats; gross weight approximately: 104.40 grams; length: 15 3/4in.*

\$8,000 - 12,000



88

89

90

88

**AN 18K GOLD AND DIAMOND
"TOURBILLON" RING, VHERNIER**

of crossover design, accented by an inner band of pavé-set round brilliant-cut diamonds; *signed Vhernier; accompanied by a signed box; estimated total diamond weight: 1.25 carats; mounted in 18k gold; size 6 1/2*

\$5,000 - 7,000

89

**A CITRINE, DIAMOND AND BLACK ONYX
NECKLACE**

centrally set with seven cushion-shaped citrines, framed by black onyx; accented by round brilliant-cut diamond panels; *estimated total diamond weight: 8.80 carats; mounted in 18k gold; circumference: 13 1/2in.*

\$10,000 - 15,000

90

A PAIR OF DIAMOND HOOP EARRINGS

composed of a double row of round brilliant-cut diamonds; *estimated total diamond weight: 12.00 carats; mounted in 18k gold; length: 1 7/16in.*

\$5,000 - 7,000



91



92

91

A DIAMOND AND 18K GOLD NECKLACE, BLACK, STARR & FROST

of braided design, set to the front with round brilliant-cut diamonds; *signed BS&F, Italy; estimated total diamond weight: 3.80 carats; gross weight approximately: 186.20 grams; length: 16 3/4in.*

\$5,000 - 8,000

PROPERTY FROM A NEW YORK COLLECTOR

92

A PAIR OF MULTI-COLORED SAPPHIRE AND DIAMOND PENDANT EARRINGS

each designed as an articulated fringe of oval-shaped pink, yellow and blue sapphires, framed by round brilliant-cut diamonds; *estimated total diamond weight: 14.65 carats; mounted in 18k gold; length: 1 7/8in.*

\$12,000 - 18,000

93

A SAPPHIRE AND DIAMOND RING

centering an oval-shaped mixed-cut sapphire, weighing approximately 7.45 carats, accented by baguette-cut diamonds, further enhanced by round brilliant-cut diamonds; *estimated total diamond weight: 2.35 carats; mounted in 18k gold; size 6 3/4*

\$12,000 - 18,000

Accompanied by AGL report # 1087947, dated October 23, 2017, stating the sapphire as: Ceylon (Sri Lanka) origin, no indications of heat or clarity enhancement.

94

A CULTURED PEARL AND DIAMOND NECKLACE

designed as a single strand of ombré colored, graduated cultured pearls, measuring from approximately 15.1 to 12.1mm, to a circular clasp, accented with round brilliant-cut diamonds; *mounted in 14k gold; length: 33 3/4in.*

\$6,000 - 9,000



93

94



95



96



97

95

**A SAPPHIRE, DIAMOND AND EMERALD
TURTLE BROOCH**

the shell set with an oval-shaped cabochon sapphire, weighing approximately 76.00 carats, accented with an old mine-cut diamond head, emerald-set eyes, adorned by rose-cut diamond accents throughout; *estimated total diamond weight: 4.30 carats; mounted in 14k rose gold; length: 2 5/16in.*

\$8,000 - 12,000

96

A RUBY AND DIAMOND RING

centering a bezel-set cushion-shaped mixed-cut ruby, weighing approximately 5.75 carats, framed by rose-cut diamonds; *estimated total diamond weight: 6.20 carats; mounted in platinum and 18k rose gold; size 5 1/4*

\$65,000 - 85,000

Accompanied by GIA report # 2185055057, dated December 8, 2016, stating the ruby as: Burmese (Myanmar origin), indications of heating.

97

**A PAIR OF PINK SAPPHIRE AND
DIAMOND EAR CLIPS**

of floral design, centering a cluster of round brilliant-cut diamonds, the petals set throughout with similarly cut pink sapphires; *estimated total diamond weight: 1.80 carats; mounted in 18k gold; length: 1 1/8in.*

\$5,000 - 7,000

**PROPERTY OF A BEVERLY HILLS,
CALIFORNIA COLLECTOR**



99

98

PROPERTY OF VARIOUS OWNERS

98

A FANCY COLORED DIAMOND AND DIAMOND PENDANT NECKLACE

centering a round brilliant-cut Fancy Brownish Yellow diamond, weighing 8.87 carats, within a surround of similarly cut diamonds, to a graduated line of round brilliant-cut diamonds; *estimated remaining diamond weight: 10.65 carats; mounted in 14k gold; length: 17 1/4in.*

\$40,000 - 60,000

Accompanied by GIA report # 2183211775 dated March 7, 2017, stating the diamond as: Fancy Brownish Yellow color, SI1 clarity.

99

A DIAMOND BANGLE WRISTWATCH, CHOPARD

quartz movement, with a pavé-set diamond dial, the case designed as a serpentine 'head', set throughout with single and round brilliant-cut diamonds, the tail of similar design with a cabochon ruby, to a leather strap; *signed Chopard, no.201132 and no.5181 1; estimated total diamond weight: 2.30 carats; mounted in 18k gold; gross weight approximately: 37.80 grams; circumference: 6in. (expandable)*

\$10,000 - 15,000

100

AN 18K GOLD, DIAMOND AND ENAMEL BANGLE BRACELET, JEAN SCHLUMBERGER FOR TIFFANY AND CO.

of semi-flexible design, applied with black enamel panels, accented by bezel-set round brilliant cut diamond spheres; *signed Tiffany & Co., Schlumberger; gross weight approximately: 136.20 grams; circumference: 6 1/2in.*

\$30,000 - 50,000

101

AN 18K GOLD AND ENAMEL "X" BANGLE BRACELET, JEAN SCHLUMBERGER

designed as a series of red pailonné enamel panels, accented with gold 'x' motifs; *signed Schlumberger, Paris, with French assay mark; gross weight approximately: 80.90 grams; circumference: 6 1/4in.*

\$10,000 - 15,000

102

A CITRINE AND DIAMOND "BIRD ON A ROCK" BROOCH, JEAN SCHLUMBERGER FOR TIFFANY AND CO.

designed as a pavé-set diamond bird, accented by a circular-cut ruby eye, perched on a cushion-shaped citrine, weighing approximately 54.00 carats; *signed Tiffany & Co., Schlumberger; estimated total diamond weight: 1.70 carats; mounted in platinum and 18k gold; length: 2 7/16in.*

\$15,000 - 25,000

103

AN 18K GOLD, PLATINUM, DIAMOND, PINK SAPPHIRE, CULTURED PEARL AND LAPIS LAZULI "DROMEDARY" BROOCH, JEAN SCHLUMBERGER FOR TIFFANY AND CO.

designed as a textured gold camel, with a culture pearl headdress, the hump set with a sugar-loaf cabochon lapis lazuli, accented throughout with round brilliant-cut diamond ornaments, the leg further set with an oval-shaped pink sapphire; *signed Tiffany, Schlumberger; gross weight approximately: 55.10 grams; length: 2 1/8in.*

\$10,000 - 15,000

PROPERTY OF A BEVERLY HILLS, CALIFORNIA COLLECTOR

104

A MULTI-COLORED SAPPHIRE, DIAMOND AND RUBY SHELL BROOCH, ATTRIBUTED TO JEAN SCHLUMBERGER

designed as a periwinkle shell, channel-set with rows of pink and purple sapphires, the bottom accented by brilliant-cut diamonds, fronted by a flower form pave-set with round brilliant-cut diamonds, accented by cabochon rubies, enhanced with tapered baguette-cut blue sapphires; *unsigned; estimated total diamond weight: 2.10 carats; mounted in 18k gold; length: 3 1/8in.*

\$10,000 - 15,000



100

101



102



103



104

PROPERTY OF VARIOUS OWNERS

105

A DIAMOND, PINK SAPPHIRE, EMERALD AND ENAMEL SERPENT BRACELET, DAVID WEBB

designed as a stylized serpent, the articulated scales with green guilloché enamel, the eyes highlighted by pear-shaped pink sapphires, the head adorned with round brilliant-cut diamonds, further accented by pear-shaped rubies; *signed Webb; accompanied by a signed pouch; estimated total diamond weight: 5.30 carats; mounted in 18k gold; circumference: 6 3/8in.*

\$30,000 - 40,000

106

AN 18K GOLD, PLATINUM, AND DIAMOND FLEUR-DE-LIS BROOCH, DAVID WEBB

designed as a textured fleur-de-lis, with an interchangeable central plaque, one enhanced by round brilliant-cut diamonds, the other of textured gold design; *signed Webb; estimated total diamond weight: 1.60 carats; length: 2 11/16in.*

\$6,000 - 8,000

107

AN EMERALD AND DIAMOND RING

centering a rectangular-shaped modified emerald-cut emerald, weighing approximately 3.00 carats, flanked by baguette-cut diamonds; *mounted in platinum and 18k gold; size 6 1/2*

\$7,000 - 10,000

Accompanied by AGL report # 1087145, dated September 22, 2017, stating the emerald as: Brazilian origin, indications of minor, traditional clarity enhancement.

108

A PAIR OF JADE AND DIAMOND NECKLACES, DAVID WEBB

each composed of round-shaped jadeite jade beads, those to the front, accented on either side with diamond set disks, interspersed with polished gold bar links; *signed Webb; estimated total diamond weight: 9.00 carats; gross weight approximately: 292.50 grams; mounted in platinum and 18k gold; length: 37 1/8in. and 34 1/8in.*

\$8,000 - 12,000



105



106



107



108



PROPERTY FROM A NEW YORK COLLECTOR

109

**A LAPIS LAZULI "LENTIL" NECKLACE, ANGELA CUMMINGS
FOR TIFFANY & CO., 1982**

composed of a single graduated strand of disk shaped lapis lazuli
links, accented by 18k gold slivers, to a polished fold disk clasp;
*signed T&Co., Cummings, 1982; gross weight approximately: 49.20
grams; length: 14 1/2in.*

\$5,000 - 7,000



110

110

A PAIR OF JADEITE JADE AND COLORED DIAMOND EAR CLIPS, CARVIN FRENCH

centering oval-shaped cabochon jadeite jade, weighing 2.38 and 2.79 carats, framed by round brilliant-cut yellow diamonds; *with maker's mark; estimated total diamond weight: 3.30 carats; mounted in 18k gold; length: 1/2in. (colored diamonds untested for origin of color)*

\$5,000 - 7,000



111

111

A DIAMOND, PLATINUM AND 18K GOLD NECKLACE

of openwork design, comprising polished oval links accented with round brilliant-cut diamonds, interspersed with circular plaques, set throughout with similarly cut diamonds; *estimated total diamond weight: 18.05 carats; gross weight approximately: 132.00 grams; length: 32in.*

\$10,000 - 15,000



112



113



114

112

**AN 18K GOLD REVERSIBLE
“HONEYMOON” BRACELET, CARTIER**

composed of two rows of circular discs, interspersed with polished gold beads; *signed Cartier, no. 739803, with maker's marks and French assay mark; accompanied by a signed box; gross weight approximately: 64.10 grams; length: 6 5/8in.*

\$6,000 - 8,000

Accompanied by a certificate of authenticity from Cartier, dated January 31, 2001.

113

**A DIAMOND AND 18K WHITE GOLD
“DRAPERIE” BRACELET, CARTIER**

comprising three strands of polished spherical beads of drapery style, intermittently set with round brilliant-cut diamonds; *signed Cartier, no. 826594; accompanied by a signed box; estimated total diamond weight: 1.50 carats; gross weight approximately: 58.80 grams; length: 6 11/16in.*

\$8,000 - 12,000

114

**A FANCY COLORED DIAMOND AND
DIAMOND RING**

centering a cut-cornered square-shaped step-cut Fancy Yellow diamond, weighing 8.02 carats, within a round brilliant-cut diamond frame, with similarly cut diamond shoulders; *mounted in platinum and 18k gold; size 6*

\$100,000 - 150,000

Accompanied by GIA report # 1176325454, dated September 24, 2015, stating the diamond as: Fancy Yellow color, VVS2 clarity.





116



115



117

115

A RUBY AND DIAMOND RING

centering a round-shaped mixed-cut ruby, weighing approximately 1.40 carats, framed by old European-cut diamonds; *mounted in platinum and 18k gold; size 9 1/2*

\$35,000 - 45,000

Accompanied by AGL report # 8086978, dated September 26, 2017, stating the ruby as: Burmese (Myanmar) origin, no indications of heat or clarity enhancement.

116

AN 18K GOLD "CREPE DE CHINE" NECKLACE, GIANMARIA BUCCELLATI

designed as a flexible collar of loosely woven gold rope; *signed Gianmaria Buccellati, Italy, with assay mark; accompanied by a signed box; gross weight approximately: 128.30 grams; length: 16in.*

\$10,000 - 15,000

117

AN 18K GOLD, SILVER AND DIAMOND BANGLE BRACELET, MARIO BUCCELLATI

designed with a leafy vine motif, accented throughout with rose-cut diamonds; *signed M. Buccellati; accompanied by a signed box; estimated total diamond weight: 1.00 carat; gross weight approximately: 62.40 grams; circumference: 6 15/16in.*

\$10,000 - 15,000



118

119

118

A PEARL, RUBY AND DIAMOND NECKLACE WITH BROOCH

the multi-strand necklace composed of baroque pearls, to a floral clasp centrally set with a cabochon ruby, weighing 4.33 carats, within a surround of round brilliant-cut diamonds, accompanied by a brooch of similar design, with the central ruby weighing, 11.88 carats; *estimated total diamond weight: 10.00 carats; mounted in 18k white gold; length: 19in.*

\$15,000 - 25,000

119

A RUBY AND DIAMOND RING, VAN CLEEF & ARPELS

centering a cushion-shaped mixed-cut ruby, weighing 3.77 carats, within a surround of round brilliant-cut diamonds; *signed Van Cleef & Arpels, no.NY3137; estimated total diamond weight: 3.10 carats; mounted in platinum; size 5 3/4*

\$70,000 - 90,000

Accompanied by AGL report # CS 57207, dated October 8, 2013, stating the ruby as: Burmese (Myanmar) origin, no indications of heat or clarity enhancement.

Accompanied by a certificate of authenticity from Van Cleef & Arpels, dated July 2, 1965.



120



121



122

PROPERTY OF A LADY

120

A JADEITE JADE AND DIAMOND RING
centering a bezel-set oval-shaped jadeite jade, measuring approximately 10.25 x 13.75 x 4.95mm, framed by round brilliant-cut diamonds; *estimated total diamond weight: 1.60 carats; mounted in 18k yellow and white gold; size 6 1/2*

\$5,000 - 7,000

Accompanied by Mason-Kay report # 160222-4, dated February 22, 2016, stating the jade as: Natural Jadeite Jade, no dye or polymer detected - 'A' Jade.

PROPERTY OF VARIOUS OWNERS

121

A DIAMOND SOLITAIRE RING
centering a round brilliant-cut diamond, weighing 1.30 carats; *mount signed Tiffany & Co.; mounted in platinum; size 5 3/4*

\$6,500 - 8,500

Accompanied by GIA report # 2181835590, dated October 20, 2017, stating the diamond as: D color, VVS2 clarity.

122

AN ART MODERNE DIAMOND BROOCH, CIRCA 1935
of leaf design, set throughout with old European-cut diamonds; *with French import marks; estimated total diamond weight: 14.00 carats; mounted in platinum and 18k white gold; length: 4in.*

\$10,000 - 15,000



123

123

A DIAMOND RING

centering a pear-shaped brilliant-cut diamond, weighing 2.39 carats, flanked by tapered baguette-cut diamond shoulders; *mounted in platinum; size 5 3/4*

\$28,000 - 35,000

Accompanied by GIA report # 2151704698, dated October 23, 2017, stating the diamond as: D color, Internally Flawless clarity.



124

124

A SAPPHIRE AND DIAMOND NECKLACE

composed of nineteen articulated oval-shaped cabochon sapphires, interspersed with bezel-set rectangular-shaped diamonds; *estimated total diamond weight: 3.80 carats; mounted in platinum; length: 16 1/2in.*

\$35,000 - 45,000

Accompanied by AGL report # 1088162, dated November 3, 2017, stating that three random sapphires as: Burma (Myanmar) origin, no indications of heat.



125

125

A PAIR OF SAPPHIRE AND DIAMOND DAY/NIGHT EARRINGS

set with cushion-shaped mixed-cut sapphires, weighing a total of 13.76 carats, framed by pear-shaped diamonds, to a surmount of marquise and round brilliant-cut diamonds; *estimated total diamond weight: 12.00 carats; mounted in platinum; length: 1 1/2in.*

\$20,000 - 30,000

Accompanied by AGL report # 1082898 A and B, dated April 12, 2017, stating the sapphires as: Ceylon (Sri Lanka) origin, no indications of heat or clarity enhancement.

126

A SPINEL AND DIAMOND RING

centering an oval-shaped mixed-cut spinel, weighing 15.88 carats, framed by round brilliant-cut diamonds; *estimated total diamond weight: 1.95 carats; mounted in 18k white gold; size 5 3/4*

\$18,000 - 22,000

Accompanied by GIA report # 5181415838, dated May 25, 2017, stating the spinel as: Orangy Red color, no indications of heating.



126



127

128

129

127

A SAPPHIRE AND DIAMOND RING

of bombé design, centrally set with an oval-shaped sapphire, weighing approximately 2.70 carats, set throughout with baguette and round brilliant-cut diamonds; *estimated total diamond weight: 3.90 carats; mounted in platinum; size 5 1/4*

\$6,000 - 8,000

128

A "HAPPY DIAMOND" LADY'S WRISTWATCH, CHOPARD

quartz movement, round brilliant-cut diamond dial within an applied transparent and diamond set case, accented by seven 'floating' diamonds, diamond set bezel with fixed diamond set handlebar lugs with diamond ends, snap on back, integral link bracelet, with folding clasp; *signed Chopard, Geneve, no.4118/7 and no.575268; accompanied by a signed box; estimated total diamonds: 1.55 carats; mounted in 18k white gold; length: 7 1/8in.*

\$5,000 - 7,000

Accompanied by a certificate of authenticity from Chopard, dated April 11, 2007.

129

A SAPPHIRE AND DIAMOND RING

of geometric design, centering a square-shaped sapphire, weighing approximately 1.10 carats, flanked by similarly cut diamonds, to a baguette-cut diamond frame, accented by tapered baguette sapphires, between round brilliant-cut diamonds; *estimated total diamond weight: 1.30 carats; mounted platinum; size 5 3/4*

\$6,500 - 7,500

Accompanied by GIA report # 2175766441, dated August 10, 2016, stating the sapphire as: Cambodian origin, no indications of heating.



130

130

A COLOR CHANGE SAPPHIRE AND DIAMOND RING

centering a cushion-shaped mixed-cut color change sapphire, weighing 8.10 carats, within a single-cut diamond surround, to similarly cut diamond shoulders; *mounted in platinum; size 5*

\$18,000 - 25,000

Accompanied by GIA report # 1172956090, dated October 27, 2016, stating the sapphire as: color change from Violetish Blue to Purple, no indications of heating.



131

131^Y

A PAIR OF CORAL, SAPPHIRE AND DIAMOND PENDANT EARRINGS, CARVIN FRENCH

designed as sapphire and round brilliant-cut flower head pistils with carved coral petals, suspending cabochon sapphire grape clusters, joined by a round brilliant-cut diamond; *with maker's mark; estimated total diamond weight: 1.00 carat; mounted in 18k gold; length: 2in.*

\$7,000 - 9,000

132

A PAIR OF CULTURED PEARL AND DIAMOND EAR CLIPS, CARVIN FRENCH

composed of circular-shaped cultured pearls, measuring approximately 12.2mm, suspended from articulated round brilliant-cut diamonds, to fanned motif surmounts set throughout with baguette and round brilliant-cut diamonds; *with maker's mark; estimated total diamond weight: 5.55 carats; mounted in platinum; length: 1 3/16in.*

\$5,000 - 7,000

133

A TANZANITE AND DIAMOND NECKLACE

composed of a double strand of graduated tanzanite beads, to a geometric buckle clasp, set with round brilliant-cut diamonds; *estimated total diamond weight: 1.50 carats; mounted in platinum; length: 22 3/8in.*

\$25,000 - 35,000



132



133



134



135



134

A PAIR OF AQUAMARINE, DIAMOND AND RUBY CLIPS, CIRCA 1935

of triangular outline, defined by clusters of oval-shaped aquamarines, enhanced by curvaceous lines of baguette and round brilliant-cut diamonds, accented by a line of graduated calibré-cut rubies; *estimated total diamond weight: 4.50 carats; mounted in platinum; length: 1 1/2in.*

\$5,000 - 7,000

135

A DIAMOND BRACELET

composed of articulated strap-and-buckle geometric panels, each panel centering square and rectangular-shaped diamonds, enhanced by baguette-cut diamonds, set within an openwork frame of round brilliant-cut diamonds; *estimated total diamond weight: 16.50 carats; mounted in platinum; length: 7 1/4in.*

\$16,000 - 20,000



136



137



138

136

A DIAMOND WRISTWATCH, PATEK PHILIPPE

manual winding, 20 jewel, cal. 13.5 movement no.980.422, designed with a suede double strap, with fancy-shaped diamond shoulders, to a signed circular dial, framed by marquise-shaped diamonds, (Ref.3267/59, no.2614952); signed *Patek Philippe, Genève*; estimated total diamond weight 4.40 carats; mounted in platinum; circumference: 6 1/2

\$10,000 - 15,000

Accompanied by an original Certificat D'Origine et de Garantie from Patek Philippe, dated September 14, 1962.

137

A DIAMOND LINE BRACELET

set with a uniform row of rectangular-shaped diamonds; estimated total diamond weight: 11.00 carats; mounted in 18k white gold; length: 7in.

\$12,000 - 18,000

138

A BLACK OPAL AND DIAMOND RING

centering an oval-shaped cabochon black opal tablet, weighing approximately 5.30 carats; enhanced by baguette and round brilliant-cut diamond borders; mounted in platinum; size 5

\$40,000 - 60,000

PROPERTY OF A VIRGINIA LADY



139



141



140

PROPERTY OF VARIOUS OWNERS

139

A DIAMOND RING, TIFFANY AND CO.

of bombé design, set throughout with round brilliant-cut diamonds; *estimated total diamond weight: 2.75 carats; mounted in platinum; size 5 3/4*

\$4,000 - 6,000

140

A SAPPHIRE AND DIAMOND RING

centering an oval-shaped modified brilliant-cut sapphire, weighing 8.01 carats, flanked by tapered baguette-cut diamond shoulders; *estimated total diamond weight: 1.00 carat; mounted in platinum; size 6 1/4*

\$6,000 - 8,000

Accompanied by AGL report # 1087946, dated October 23, 2017, stating the sapphire as: Ceylon (Sri Lanka) origin, no indications of heat or clarity enhancement.

Accompanied by GIA report # 1176509469, dated April 14, 2016, stating the sapphire as: no indications of heating.

141

A PAIR OF DIAMOND EAR CLIPS

of stylized leaf design, set throughout with round brilliant-cut diamonds; *estimated total diamond weight: 29.50 carats; mounted in 18k white gold; length: 1 1/2in.*

\$15,000 - 25,000



142



143

142

A DIAMOND NECKLACE, BOUCHERON

designed as an articulated choker, composed of diagonal bombé spiral links, set with round brilliant-cut diamonds; *signed Boucheron, no. P56088, with maker's mark and French assay mark; accompanied by a signed box; estimated total diamond weight: 27.50 carats; mounted in 18k white gold; gross weight approximately: 140.00 grams; length: 13 1/8in.*

\$30,000 - 50,000

143

A SAPPHIRE AND DIAMOND RING

centering an oval-shaped cabochon sapphire, weighing 27.56 carats, set with a frame of round brilliant-cut diamonds, to a split shank accented by similarly cut diamonds; *estimated total diamond weight: 2.00 carats; mounted in 18k white gold; size 6*

\$10,000 - 15,000

Accompanied by GIA report # 2115918444, dated April 8, 2010, stating the sapphire as: Sri Lankan origin, indications of heating.



144



146



145

144

A PAIR OF DIAMOND PENDANT EARRINGS

each surmount of floral cluster design, set with round brilliant-cut diamonds, suspending similarly cut diamonds, to an oval-shaped bombé dome of open work design, accented by round brilliant-cut diamonds; *estimated total diamond weight: 15.95 carats; mounted in platinum; length: 1 7/8in.*

\$8,000 - 12,000

145

A DIAMOND AND PLATINUM RING, TIFFANY & CO.

centering a cut-cornered rectangular modified brilliant-cut diamond, weighing 1.57 carats, flanked by trillion-cut diamonds; *signed Tiffany & Co.; mounted in platinum; size 5*

\$10,000 - 15,000

Accompanied by GIA report # 2185835630, dated October 20, 2017, stating the diamond as: E color, VS2 clarity.

146

A DIAMOND BROOCH

of articulated cascading motif, set with marquise and round brilliant-cut diamonds; *estimated total diamond weight: 13.35 carats; mounted in platinum; length: 2in.*

\$5,000 - 7,000



147

148



147

A DIAMOND RING

centering a rectangular-shaped emerald-cut diamond, weighing 2.07 carats, to similarly cut diamond shoulders; *estimated remaining diamond weight: 1.00 carat; mounted in platinum; size 5 1/4*

\$15,000 - 20,000

Accompanied by GIA report # 10026511, dated October 23, 2017, stating the diamond as: E color, VS1 clarity.

148

A PAIR OF AMETHYST, DIAMOND AND TSAVORITE EAR CLIPS AND BROOCH, CARVIN FRENCH

the brooch designed as a cluster of amethyst beads, topped with round brilliant-cut diamonds, scattered throughout with circular-cut tsavorites, to rectangular-shaped diamond tips, ear clips of similar design; *with maker's mark; estimated total diamond weight: 2.25 carats; mounted in platinum; brooch length: 2 1/8in.; earring length: 1 3/8in.*

\$7,000 - 9,000



149

149

A SAPPHIRE AND DIAMOND RING

centering a cushion-shaped mixed-cut sapphire, weighing 8.82 carats, within a double row surround of round brilliant-cut diamonds; *estimated total diamond weight: 5.30 carats; mounted in platinum; size 6 1/4*

\$30,000 - 40,000

Accompanied by GIA report # 1146622590, dated July 10, 2012, stating the sapphire as: Burmese (Myanmar) origin, no indications of heating.



150

150

A DIAMOND BRACELET

the wide, flexible bracelet designed with interlocking half-domed cylindrical links, pavé-set throughout with round brilliant-cut diamonds; *estimated total diamond weight: 15.40 carats; mounted in 18k white gold; length: 7in.*

\$12,000 - 18,000



151

151

A DIAMOND PENDANT/BROOCH

of floral motif, with openwork design, centering a round brilliant-cut diamond, set throughout with similarly cut diamonds, with baguette-shaped diamond ribbon detail; *estimated total diamond weight: 9.55 carats; mounted in platinum; length: 2 3/16in.*

\$3,500 - 4,500

**PROPERTY OF A BEVERLY HILLS,
CALIFORNIA COLLECTOR**

PROPERTY OF VARIOUS OWNERS



152

A SAPPHIRE AND DIAMOND RING

centering an oval-shaped cabochon sapphire, weighing 6.00 carats, within a pavé-set diamond surround of round brilliant-cut diamonds; *estimated total diamond weight: 2.00 carats; mounted in platinum; size 6 1/4*

\$6,000 - 9,000

Accompanied by AGL report # 1083093, dated April 17, 2017, stating the sapphire as: no indications of heat or clarity enhancement.

153

A DIAMOND NECKLACE

of bombé design, composed of highly flexible links, set throughout with round brilliant-cut diamonds; *estimated total diamond weight: 41.50 carats; mounted in 18k gold; length: 16 3/8in.*

\$30,000 - 50,000

154

A PINK TOURMALINE AND DIAMOND RING

centering an oval-shaped pink tourmaline, weighing 19.52 carats, within a surround of round brilliant-cut diamonds; *estimated total diamond weight: 1.80 carats; mounted in 14k white gold; size 8*

\$8,000 - 12,000

**PROPERTY OF A BEVERLY HILLS,
CALIFORNIA COLLECTOR**



PROPERTY OF VARIOUS OWNERS

155

A PAIR OF SAPPHIRE AND DIAMOND EARRINGS

centering oval-shaped modified mixed-cut sapphires, weighing 5.11 and 5.01 carats, within a floral surround of oval and round brilliant-cut diamonds; *estimated total diamond weight: 8.00 carats; mounted in 18k gold; diameter: 3/8in.*

\$30,000 - 40,000

Accompanied by GIA report # 2155012073, dated October 11, 2012, stating the 5.11 carats sapphire as: Sri Lankan origin, no indications of heating.

Accompanied by GIA report # 2155012159, dated October 8, 2012, stating the 5.01 carats sapphire as: Sri Lankan origin, no indications of heating.

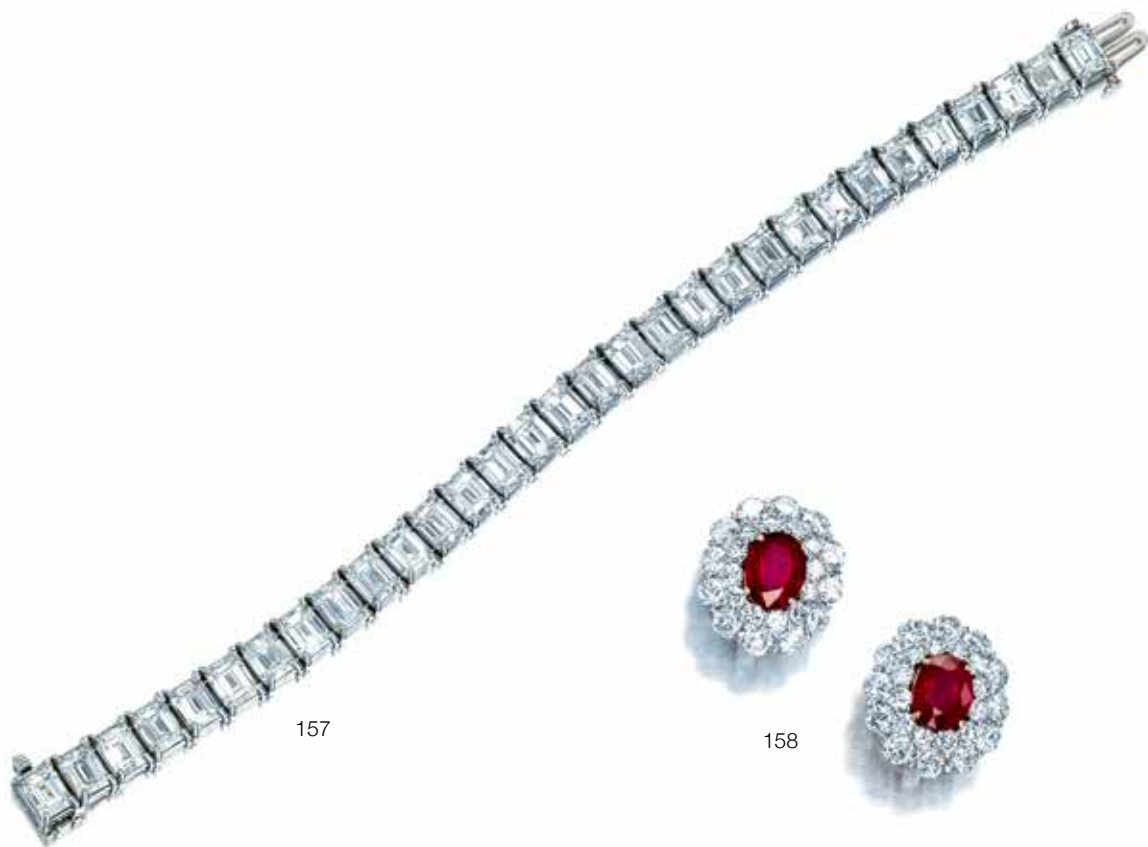
156

A RUBY AND DIAMOND RING

centering an oval-shaped mixed-cut ruby, weighing 2.18 carats, framed by marquise-cut diamonds; *estimated total diamond weight: 2.10 carats; mounted in 18k white gold; size 9 1/4*

\$35,000 - 55,000

Accompanied by AGL report # 1086472, dated August 31, 2017, stating the Ruby as: Burmese (Myanmar) origin, no indications of heat or clarity enhancement.



157

158

157

A DIAMOND BRACELET

composed of a flexible line of rectangular-shaped diamonds; *estimated total diamond weight: 31.10 carats; mounted in platinum; length: 7in.*

\$70,000 - 90,000

158

A PAIR OF RUBY AND DIAMOND EARRINGS

centering oval-shaped mixed-cut rubies, weighing approximately 3.20 and 2.85 carats, within a double surround of round brilliant-cut diamonds; *with no. 11723; estimated total diamond weight: 9.50 carats; mounted in platinum; length: 3/4in.*

\$15,000 - 25,000

Accompanied by AGL report # 1087146 A and B, dated September 22, 2017, stating the rubies as: Burmese (Myanmar - Mong Hsu) origin, indications of minor heating residues.



159



160



161

159

A SAPPHIRE AND DIAMOND RING

of openwork bombé design, centering an oval-shaped sapphire, weighing 6.45 carats, flanked by either side by three rows of baguette-cut diamonds, accented by round brilliant-cut diamonds; *estimated total diamond weight: 2.75 carats; mounted in platinum; size 6*

\$10,000 - 15,000

160

A RUBY AND DIAMOND RING

centering a cushion-shaped mixed-cut ruby, weighing 7.35 carats, framed by marquise-cut diamonds; *estimated total diamond weight: 3.65 carats; mounted in 18k white gold; size 6 3/4*

\$8,000 - 10,000

Accompanied by AGL report # 1087224, dated October 6, 2017, stating the ruby as: Thai origin, indications of insignificant heating residues.

161

A PAIR OF PURPLE SAPPHIRE AND DIAMOND HOOP EARRINGS, ASSIL

designed with a central row of oval-shaped purple sapphires, enhanced at either side by round brilliant-cut diamonds; *estimated total diamond weight: 6.85 carats; mounted in 18k white gold; length: 1 3/4in.*

\$20,000 - 30,000

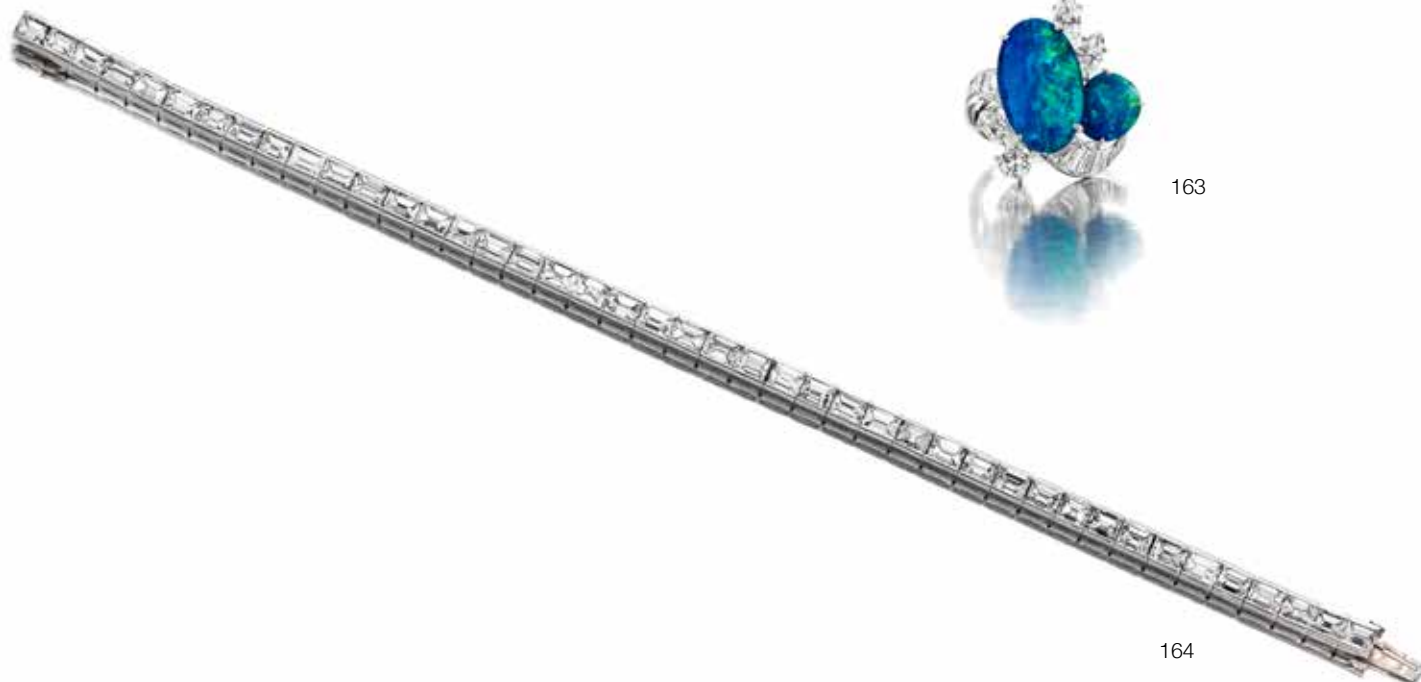
PROPERTY OF A VIRGINIA LADY



162



163



164

PROPERTY OF A LADY

162

A SAPPHIRE AND DIAMOND RING

centering a cushion-shaped sapphire, weighing 5.98 carats, framed within a floral design of round brilliant-cut diamonds; *estimated total diamond weight: 1.25 carats; mounted in platinum; size 6 1/4*

\$8,000 - 10,000

PROPERTY OF A VIRGINIA LADY

163

A BLACK OPAL AND DIAMOND RING

of stylized foliate design, centering oval-shaped cabochon black opals, enhanced by marquise and round brilliant-cut diamonds, to tapered-baguette diamond shoulders; *estimated total diamond weight: 2.20 carats; mounted in platinum; size 6 1/5*

\$12,000 - 18,000

PROPERTY OF VARIOUS OWNERS

164

A DIAMOND LINE BRACELET, CARTIER

composed of a single line of rectangular-shaped diamonds; *signed Cartier, no.49756; estimated total diamond weight: 8.80 carats; mounted in platinum; length: 7 1/8in.*

\$15,000 - 20,000



165

A SAPPHIRE AND DIAMOND RING
of bombé form, centering an oval-shaped sapphire, weighing 4.57 carats, flanked by baguette-cut diamonds, to a surround of pavé-set round brilliant-cut diamonds; *estimated total diamond weight: 3.00 carats; mounted in platinum; size 8 1/4*

\$65,000 - 85,000

Please see department for certificate details.

166

A DIAMOND AND PLATINUM "ESCALIER" BRACELET, BOUCHERON
of geometric design, composed of three lines of articulated links of three-dimensional form, accented by round brilliant-cut diamonds; *signed Boucheron, Paris; estimated total diamond weight: 4.20 carats; gross weight approximately 58.80 grams; length: 7 5/16in.*

\$20,000 - 30,000

167

A SAPPHIRE AND DIAMOND RING
centering an oval-shaped double cabochon sapphire, weighing 6.76 carats, flanked by trillion-cut diamonds; *estimated total diamond weight: 1.05 carats; mounted in platinum; size 6 1/2*

\$12,000 - 15,000

Accompanied by AGL report # 8086112, dated March 15, 2017, stating the sapphire as: Burmese (Myanmar) origin, no indications of heat or clarity enhancement.

Accompanied by GIA report # 2151830576, dated December 17, 2013, stating the sapphire as: Burmese (Myanmar) origin, no indications of heating.



168



168

AN EMERALD AND DIAMOND RING

centering a rectangular-shaped emerald-cut emerald, weighing approximately 16.10 carats, framed by round brilliant-cut diamonds, to a split shank of similarly cut diamonds; *estimated total diamond weight: 6.60 carats; mounted in platinum and 18k gold; size 5 3/4*

\$50,000 - 80,000

Accompanied by AGL report # CS 1079404, dated October 21, 2016, stating the emerald as: Colombian origin, indications of minor, traditional clarity enhancement.

169



169

A PAIR OF RUBY AND DIAMOND PENDANT EARRINGS

set with pear-shaped mixed-cut rubies, weighing a total of 1.38 carats, within a double surround of round brilliant-cut diamonds, to an articulated marquise-cut diamond, accented by melee diamond surmounts; *estimated total diamond weight: 1.20 carats; mounted in 18k white and yellow gold; length: 1 1/2in.*

\$5,000 - 7,000

Accompanied by C. Dunaigre report # 1601380/1&2, dated January 27, 2016, stating the rubies as: Burmese (Myanmar) origin, no indications of heat or clarity enhancement.



170

A RUBY AND DIAMOND RING

centering an oval-shaped mixed-cut ruby, weighing 3.37 carats, flanked by oval-shaped diamonds; *mounted in 18k bi-colored gold; size 5 1/2*

\$10,000 - 15,000

Accompanied by GIA report # 2175368258, dated November 12, 2015, stating the ruby as: Burmese (Myanmar) color, indications of heating.



171

A RUBY AND DIAMOND RING

centering a cushion-shaped modified step-cut ruby, weighing 2.67 carats, within a square and tapered baguette-cut diamond surround; *estimated total diamond weight: 3.50 carats; mounted in platinum; size 6*

\$25,000 - 35,000

Accompanied by GIA report # 2151720853, dated October 29, 2013, stating the Ruby as: Burmese (Myanmar) origin, no indications of heating.



172

A PAIR OF EMERALD AND DIAMOND PENDANT EAR CLIPS

the bell-shaped pendants set with pear-shaped mixed-cut emeralds, weighing approximately 2.00 and 1.75 carats, within a marquise and round brilliant-cut diamond surround, suspended from articulated round brilliant-cut diamond surmounts; *estimated total diamond weight: 5.75 carats; mounted in platinum; length: 2 1/8in.*

\$15,000 - 20,000

Accompanied by AGL report # 1087711, dated October 13, 2017, stating the emeralds as: Colombian origin, indications of minor, traditional clarity enhancement.



173



174



175

173

AN EMERALD AND DIAMOND RING

centering a bezel-set rectangular-shaped emerald-cut emerald, weighing approximately 1.45 carats, within an ornate setting, accented by round brilliant-cut diamonds; *mounted in platinum; size 8*

\$15,000 - 20,000

Accompanied by AGL report # CS 55757, dated July 18, 2013, stating the emerald as: *Zambian origin, no indications of heat or clarity enhancement.*

174

A PAIR OF EMERALD AND DIAMOND PENDANT EARRINGS

of chandelier design, set throughout with old mine-cut diamonds, terminating with double cabochon emeralds; *estimated total diamond weight: 5.20 carats; mounted in 18k white gold; length: 1 3/4in.*

\$7,000 - 9,000

175

A BLACK OPAL AND DIAMOND BRACELET

designed as an articulated single row of oval-shaped cabochon black opals, enhanced by round brilliant-cut diamond spacers; *estimated total diamond weight: 1.00 carat; mounted in 18k gold; length: 6 5/8in.*

\$5,000 - 7,000

PROPERTY OF A VIRGINIA LADY



PROPERTY OF VARIOUS OWNERS

176

AN EMERALD AND DIAMOND RING

centering a rectangular-shaped emerald-cut emerald, weighing approximately 5.25 carats, within a ballerina setting, framed by baguette-cut diamonds; *estimated total diamond weight: 1.60 carats; mounted in platinum; size 5*

\$10,000 - 15,000

Accompanied by AGL report # 1087710, dated October 13, 2017, stating the emerald as: Colombian origin, indications of minor, mixed-type clarity enhancement.

177

A DIAMOND AND 18K WHITE GOLD “DRAPERIE” COLLAR NECKLACE AND EARRINGS, CARTIER

comprising three graduated strands of polished spherical beads of drapery style, intermittently set with round brilliant-cut diamonds, accompanied with earrings of similar design; *signed Cartier, no.828656, with maker's mark and French assay marks; accompanied by a signed box; estimated total diamond weight: 5.15 carats; gross weight approximately: 227.50 grams; necklace length: 14in; earring length: 5/8in.*

\$18,000 - 25,000



178



179



180

178

A SAPPHIRE AND DIAMOND BROOCH

centering an octagonal-shaped step-cut sapphire, weighing 23.86 carats, within a framed surround of pear-shaped diamonds; *estimated total diamond weight: 9.75 carats; mounted in platinum; length: 1 1/4in.*

\$80,000 - 120,000

Accompanied by AGL report # CS 1079139, dated October 20, 2016, stating the sapphire as: Ceylon (Sri Lanka) origin, no indications of heat or clarity enhancement.

179

A JADEITE JADE AND DIAMOND RING

centering an oval-shaped cabochon jadeite jade, weighing 8.91 carats, accented by pear-shaped diamonds, to round brilliant-cut diamond shoulders; *estimated total diamond weight: 1.65 carats; mounted in 18k gold; size 6 1/4*

\$8,000 - 12,000

Accompanied by Mason-Kay report # 171011-4, dated October 11, 2017, stating the jade as: Natural Jadeite Jade, no dye or polymer detected - 'A' Jade.

180

A FANCY COLORED DIAMOND, DIAMOND AND CERAMIC RING

centering a heart-shaped modified brilliant-cut Fancy Gray diamond, weighing 3.20 carats, within a ceramic setting, accented by round brilliant-cut diamonds, to pavé-cut diamond shoulders; *estimated total diamond weight: 3.65 carats; mounted in platinum; size 5 3/4*

\$35,000 - 55,000

Accompanied by GIA report # 5161871750, dated July 15, 2015, stating the diamond as: Fancy Gray color.





181

181

AN IMPORTANT DIAMOND RING

centering a pear-shaped brilliant-cut diamond, weighing 8.22 carats, flanked by tapered baguette-cut diamonds; *mounted in platinum, size 7 3/4*

\$175,000 - 225,000

Accompanied by GIA report # 5182598839, dated July 13, 2017, stating the diamond as: G color, VS1 clarity.



182

182

AN EMERALD AND DIAMOND RING

centering a rectangular-shaped emerald-cut emerald, weighing 6.46 carats, flanked by trillion-cut diamond shoulders; *estimated total diamond weight: 1.35 carats; mounted in platinum and 18k gold; size 7*

\$50,000 - 70,000

Accompanied by AGL report # CS 43226, dated October 27, 2010, stating the emerald as: Colombian origin, indications of faint to moderate clarity enhancement.





183

183

A DIAMOND RIVIÈRE NECKLACE

composed of a graduated series of rectangular-shaped diamonds; estimated total diamond weight: 69.25 carats; mounted in platinum; length: 17 1/4in.

\$150,000 - 200,000



184

184

A SAPPHIRE AND DIAMOND RING

centering a cushion-shaped mixed-cut sapphire, weighing 14.48 carats, set within an ornate frame of rectangular and round brilliant-cut diamonds; mounted in platinum; size 5 3/4

\$80,000 - 100,000

Accompanied by AGL report # 8086278, dated June 16, 2017, stating the sapphire as: Burmese (Myanmar) origin, no indications of heat or clarity enhancement.





(This photograph of Zsa Zsa Gabor to accompany the lot.)



Zsa Zsa Gabor, was a self-confessed jewelry lover who epitomized Hollywood glamour. Born Sari Gabor in 1917 in Budapest, Hungary. She and her two sisters grew up in an affluent family exposed to jewelry through her mother's family business. At age 13, she was sent to boarding school in Switzerland where she was soon discovered by the opera singer Richard Tauber. He encouraged her to spend time at the Vienna Acting Academy before making her debut in his opera.

In 1937, at the age of 20, Zsa Zsa Gabor married her first of nine husbands, the Turkish official Burhan Asaf Belge, to whom she allegedly proposed. To celebrate her engagement, her parents gifted her a 10 carat diamond. Unfortunately, this marriage did not last long and she filed for divorce after immigrating to the United States in 1941, where she join her sister.

In 1942, after only a few months, she met and married dashing bachelor and hotel magnate Conrad Hilton. Together they had a daughter, Francesca, before divorcing in 1946.

By the 1950's Ms. Gabor's film and television career had begun to blossom, first in 1952 with her movie roll in *Lovely to Look At*. Yet, she was probably best known for her European glamour. Many of her roles emulated her real life persona of self-indulgence and beauty. She was undoubtedly smart and whimsical, embracing the drama of Hollywood life.

It is not surprising that she frequently visited "the King of Diamonds," Harry Winston. It was there that she felt at home in the salon surrounded by jewels. Zsa Zsa Gabor was patron of this important diamond maison. This magnificent diamond necklace acquired in 1964 represents one of her largest purchases. The riviére initially composed of 47 graduating round diamonds was modified by Ms. Gabor when she removed two diamonds and converted them into diamond stud earrings.

Her love for jewelry and lavish adornment is legendary; and this necklace was undoubtedly a favorite jewel, as it is seen in many photographs.

185

A MAGNIFICENT DIAMOND RIVIÈRE NECKLACE, HARRY WINSTON, 1964

composed of forty-five graduated round brilliant-cut diamonds, the five central diamonds weighing 8.07, 6.34, 6.33, 5.35 and 4.88 carats, to an invisibly set clasp; *unsigned, no5512; remaining total diamond weight: 66.21 carats; mounted in platinum; length: 14 13/16in.*

\$1,200,000 - 1,500,000

Accompanied by GIA report # 5151838478, dated January 6, 2014, stating the 8.07 carats diamond as: G color, VVS2 clarity.

Accompanied by GIA report # 1152838447, dated January 6, 2014, stating the 6.34 carats diamond as: F color, VVS2 clarity.

Accompanied by GIA report # 1152838450, dated January 6, 2014, stating the 6.33 carats diamond as: G color, VVS1 clarity.

Accompanied by GIA report # 1152838468, dated January 6, 2014, stating the 5.35 carats diamond as: H color, VVS2 clarity.

Accompanied by GIA report # 2155838453, dated January 6, 2014, stating the 4.88 carats diamond as: I color, VVS2 clarity.

For further information on the remaining reports from the Gemological Institute of American (GIA), please contact the jewelry department.

Accompanied by a certificate of authenticity from Harry Winston, dated August 23 2017.





186

A MAGNIFICENT DIAMOND RING, GRAFF

centering a square-shaped emerald-cut diamond, weighing 16.53 carats, flanked by tapered baguette-cut diamonds; *signed Graff; accompanied by a signed box; estimated remaining diamond weight: 1.70 carats; mounted in platinum; size 4 1/2*

\$550,000 - 750,000

Accompanied by GIA report # 11390321, dated September 7, 2017, stating the diamond as: H color, VVS2 clarity.

Graff Diamonds was founded in 1960 when Graff was just seventeen years old. Lawrence Graff established his place in jewelry history by dealing in important diamonds, both white and fancy colors. Lawrence Graff is said to have “handled more diamonds of notable rarity and beauty than any other jeweler.” The Graff philosophy for every diamond ring relies on stone-led craftsmanship taking into account the rarity and uniqueness of each individual diamond.





187

A SUPERB DIAMOND RING

centering an oval-shaped brilliant-cut diamond, weighing 13.61 carats, within a raised basket adorned with round brilliant-cut diamonds, to a split shank with similarly cut diamond accents; *mounted in platinum; size 5 3/4*

\$1,400,000 - 1,800,000

Accompanied by GIA report # 2155517190, dated October 30, 2015, stating the diamond as: D color, Internally Flawless clarity.

Accompanied by GIA type classification letter for GIA grading report # 2155517190, dated October 30, 2015, stating the diamond as: Type IIa.





188

188

A DIAMOND SOLITAIRE RING

centering a round brilliant-cut diamond, weighing 10.01 carats, accented by similarly cut diamond shoulders; *mounted in platinum; size 6*

\$600,000 - 800,000

Accompanied by GIA report # 2105465775, dated September 21, 2017, stating the diamond as: F color, VVS2 clarity.



189

189

A SAPPHIRE AND DIAMOND RING

centering a rectangular-shaped emerald-cut sapphire, weighing 18.44 carats, flanked by triangular-shaped diamonds, weighing approximately 1.00 and 1.01 carats; *mounted in platinum; size 6 1/2*

\$100,000 - 150,000

Accompanied by AGL report # CS 1075836, dated May 19, 2017, stating the sapphire as: Ceylon (Sri Lankan) origin, no indications of heat or clarity enhancement.



FINE JEWELLERY

Thursday 7 December 2017
New Bond Street, London

**A PAIR OF BRILLIANT-CUT FANCY
VIVID YELLOW DIAMONDS,
WEIGHING 2.08 AND 1.93 CARATS
£50,000 - 80,000 ***

**THREE STEP-CUT FANCY VIVID
YELLOW DIAMONDS, WEIGHING
5.29, 3.11 AND 2.37 CARATS
£200,000 - 300,000 ***

ENQUIRIES

+44 (0) 20 7468 8284
emily.barber@bonhams.com

Offered for sale as a pair of earrings
and a brooch, illustrated unmounted



Bonhams

LONDON

bonhams.com/jwl

* For details of the charges payable in addition to the final hammer price, please visit bonhams.com/buyersguide

RARE JEWELS AND JADEITE

Sunday 26 November 2017
Bonhams Hong Kong Gallery
Suite 2001, One Pacific Place
Admiralty, Hong Kong

A FINE COLOMBIAN EMERALD
AND DIAMOND NECKLACE, BY
HARRY WINSTON

HK\$1,900,000 - 2,500,000
US\$240,000 - 320,000
£180,000 - 240,000

ENQUIRIES

+852 2918 4321
jewellery.hk@bonhams.com



Bonhams

HONG KONG

bonhams.com/hongkong

DIAMOND INDEX

Lot No.	Carat	Cut	Color	Clarity	Certificate	Estimate
23	4.12	Round	D	VVS2	2185746489	\$100,000-125,000
44	3.15	Round	D	VS1	2185850776	\$50,000-70,000
74	3.38	Round	G	SI1	2185646681	\$25,000-35,000
82	Necklace	Please see lot 82 for full description				\$180,000-250,000
98	8.87	Round	Fancy Brownish Yellow	SI1	2183211755	\$40,000-60,000
114	8.02	Square Cut-Cornered	Fancy Yellow	VVS2	1176325454	\$100,000-150,000
121	1.30	Round	D	VVS2	2181835590	\$6,500-8,500
123	2.39	Pear	D	IF	2151704698	\$28,000-35,000
145	1.57	Rectangular	E	VS2	2185835630	\$10,000-15,000
147	2.07	Rectangular Cut-Cornered	E	VS1	1006511	\$15,000-20,000
180	3.20	Heart	Fancy Gray		5161871750	\$35,000-55,000
181	8.22	Pear	G	VS1	5182598839	\$175,000-225,000
185	Necklace	Please see lot 185 for full description				\$1,200,000-1,500,000
186	16.53	Square Cut-Cornered	H	VVS2	11390321	\$550,000-750,000
187	13.61	Oval	D	IF	2155517190	\$1,400,000-1,800,000
188	10.01	Round	F	VVS2	2105465775	\$600,000-800,000

*next to color - not tested for origin of color

* next to piece - other significant stones within the piece

* next to weight - approximate weight

* next to cert - lab graded color only

* next to lot number - Bonhams specialists disagree with the grade. Please see a specialist for details.

This list is provided for your convenience based on the opinion of our gemologists.

It in no way represents a guarantee or warranty.

Bonhams is not responsible for any discrepancies between this information & other opinions.

CERTIFIED RUBY INDEX

Lot No.	Carat/Dimensions	Cut	Origin	Treatment	Laboratory Report
16	1.75	Cushion	Burmese (Myanmar)	None	SSEF
22	1.56	Oval	Burmese (Myanmar)	None	AGL
96	5.75	Cushion	Burmese (Myanmar)	Heat	GIA
115	8.37 x 7.97 mm	Round	Burmese (Myanmar)	None	AGL
119	3.77	Cushion	Burmese (Myanmar)	None	AGL
156	2.18	Oval	Burmese (Myanmar)	None	AGL
158	Pair 10.08 x 7.75 mm	Oval	Burmese (Myanmar-Mong Hsu)	Minor Heat	AGL
160	7.35	Cushion	Thai	Insignificant Heat	AGL
169	Pair total 1.38	Pear	Burmese (Myanmar)	None	C. Dunaigre
170	3.37	Oval	Burmese (Myanmar)	Heat	GIA
171	2.67	Cushion	Burmese (Myanmar)	None	AGL

CERTIFIED SAPPHIRE INDEX

Lot No.	Carat/Dimensions	Cut	Origin	Treatment	Laboratory Report
64	15.13 x 10.72 mm	Cushion	Ceylon (Sri Lanka)	None	AGL
67	12.06	Oval Cabochon		None	AGL
84	11.10 x 7.92 mm	Rectangular	Ceylon (Sri Lanka)	Heat	AGL
86	12.70 x 12.65 mm	Cushion	Ceylon (Sri Lanka)	None	AGL
93	12.38 x 9.55 mm	Oval	Ceylon (Sri Lanka)	None	AGL
125	pair 13.76	Cushion	Ceylon (Sri Lanka)	None	AGL
129	8.23 x 7.78 mm	Square	Cambodian	None	GIA
140	8.01	Oval	Ceylon (Sri Lanka)	None	AGL & GIA
143	27.56	Oval Cabochon	Sri Lanka	Heat	GIA
149	8.82	Cushion	Burmese (Myanmar)	None	GIA
152	6.00	Oval Cabochon		None	AGL
155	5.11 & 5.01	Oval	Sri Lanka	None	GIA
167	6.76	Oval Cabochon	Burmese (Myanmar)	None	AGL & GIA
178	23.86	Octagonal	Ceylon (Sri Lanka)	None	AGL
184	14.48	Cushion	Burmese (Myanmar)	None	AGL
189	18.44	Rectangular	Ceylon (Sri Lanka)	None	AGL

CERTIFIED EMERALD INDEX

Lot No.	Carat/Dimensions	Cut	Origin	Treatment	Laboratory Report
3	6.56	Octagonal	Colombian	Moderate	GIA
37	11.80 x 8.60 mm	Triangular	Colombian	Insignificant-Traditional	AGL
107	10.08 x 9.34 mm	Rectangular	Brazilian	Minor-Traditional	AGL
172	Pair 13.54 x 7.62 mm	Pear	Colombian	Minor-Traditional	AGL
168	16.29 x 14.01 mm	Rectangular	Colombian	Minor-Traditional	AGL
173	6.60 x 6.00 mm	Rectangular	Zambian	None	AGL
176	11.15 x 9.38 mm	Rectangular	Colombian	Minor-Mixed	AGL
182	6.46	Rectangular	Colombian	Faint to Moderate	AGL

CERTIFIED FANCY SAPPHIRE INDEX

Lot No.	Carat/Dimensions	Cut	Color/Origin	Treatment	Laboratory Report
76	5.99	Oval	Violet Madagascar	None	AGL
77	12.50	Oval Cabochon	Violet Ceylon (Sri Lanka)	None	AGL
130	8.10	Cushion	Violetish Blue to Purple	None	GIA
152	6.00	Oval Cabochon		None	AGL

CERTIFIED JADE INDEX

Lot No.	Carat/Dimensions	Cut	Type	Treatment	Laboratory Report
120	10.25 x 13.75 x 4.95 mm	Oval	A	None	Mason-Kay
179	8.91	Oval	A	None	Mason-Kay

CERTIFIED PEARL INDEX

Lot No.	Shape	Dimensions	Type	Treatment	Laboratory Report
34	Drop	23.30 x 14.12 mm	Natural Saltwater	None	GIA/SSEF
41	Baroque	15.51 x 12.97 mm	Natural Saltwater	None	GIA

CERTIFIED ALEXANDRITE INDEX

Lot No.	Carat/Dimensions	Cut	Origin	Treatment	Laboratory Report
57	7.76	Rectangular	Ceylon (Sri Lanka)	None	AGL

CERTIFIED SPINEL INDEX

Lot No.	Carat/Dimensions	Cut	Color	Treatment	Laboratory Report
126	15.88	Oval	Orangy Red	None	GIA

CONDITIONS OF SALE

The following Conditions of Sale, as amended by any published or posted notices or verbal announcements during the sale, constitute the entire terms and conditions on which property listed in the catalog shall be offered for sale or sold by Bonhams & Butterfields Auctioneers Corp. and any consignor of such property for whom we act as agent. If live online bidding is available for the subject auction, additional terms and conditions of sale relating to online bidding will apply; see www.bonhams.com/WebTerms for the supplemental terms. As used herein, "Bonhams," "we" and "us" refer to Bonhams & Butterfields Auctioneers Corp.

1. As used herein, the term "bid price" means the price at which a lot is successfully knocked down to the purchaser. The term "purchase price" means the aggregate of (a) the bid price, (b) a PREMIUM retained by us and payable by the purchaser EQUAL TO 25% OF THE FIRST \$250,000 OF THE BID PRICE, 20% OF THE AMOUNT OF THE BID PRICE ABOVE \$250,001 UP TO AND INCLUDING \$4,000,000, AND 12.5% OF THE AMOUNT OF THE BID PRICE OVER \$4,000,000, and (c) unless the purchaser is exempt by law from the payment thereof, any Arizona, California, Colorado, Connecticut, Florida, Georgia, Illinois, Massachusetts, Nevada, New Jersey, New York, Pennsylvania, Texas, Virginia, Washington, D.C., Washington state, or other state or local sales tax (or compensating use tax) and other applicable taxes. With regard to New York sales tax, please refer to the "Sales and Use Tax" section of these Conditions of Sale.

2. On the fall of the auctioneer's hammer, the highest bidder shall have purchased the offered lot in accordance and subject to compliance with all of the conditions set forth herein and (a) assumes full risk and responsibility therefor, (b) if requested will sign a confirmation of purchase, and (c) will pay the purchase price in full or such part as we may require for all lots purchased. No lot may be transferred. Any person placing a bid as agent on behalf of another (whether or not such person has disclosed that fact or the identity of the principal) may be jointly and severally liable with the principal under any contract resulting from the acceptance of a bid.

Unless otherwise agreed, payment in good funds is due and payable within five (5) business days following the auction sale. Whenever the purchaser pays only a part of the total purchase price for one or more lots purchased, we may apply such payments, in our sole discretion, to the lot or lots we choose. Payment will not be deemed made in full until we have collected good funds for all amounts due.

Payment for purchases may be made in or by (a) cash, (b) cashier's check or money order, (c) personal check with approved credit drawn on a U.S. bank, (d) wire transfer or other immediate bank transfer, or (e) Visa, MasterCard, American Express or Discover credit, charge or debit card. A processing fee will be assessed on any returned checks. Please note that the amount of cash notes and cash equivalents that can be accepted from a given purchaser may be limited.

To the fullest extent permitted by applicable law: The purchaser grants us a security interest in the property, and we may retain as collateral security for the purchaser's obligations to us, any property and all monies held or received by us for the account of the purchaser, in our possession. We also retain all rights of a secured party under the California Commercial Code. If the foregoing conditions or any other applicable conditions herein are not complied with, in addition to all other remedies available to us and the consignor by law, we may at our election: (a) hold the purchaser liable for the full purchase price and any late charges, collection costs, attorneys' fees and costs, expenses and incidental damages incurred by us or the consignor arising out of the purchaser's breach; (b) cancel the sale, retaining as liquidated damages all payments made by the purchaser; and/or (c) cancel the sale and/or resell the purchased property, at public auction and/or by private

sale, and in such event the purchaser shall be liable for the payment of all consequential damages, including any deficiencies or monetary losses, and all costs and expenses of such sale or sales, our commissions at our standard rates, all other charges due hereunder, all late charges, collection costs, attorneys' fees and costs, expenses and incidental damages. In addition, where two or more amounts are owed in respect of different transactions by the purchaser to us, to Bonhams 1793 Limited and/or to any of our other affiliates, subsidiaries or parent companies worldwide within the Bonhams Group, we reserve the right to apply any monies paid in respect of a transaction to discharge any amount owed by the purchaser. If all fees, commissions, premiums, bid prices and other sums due to us from the purchaser are not paid promptly as provided in these Conditions of Sale, we reserve the right to impose a finance charge equal to 1.5% per month (or, if lower, the maximum nonusurious rate of interest permitted by applicable law), on all amounts due to us beginning on the 31st day following the sale until payment is received, in addition to other remedies available to us by law.

3. We reserve the right to withdraw any property and to divide and combine lots at any time before such property's auction. Unless otherwise announced by the auctioneer at the time of sale, all bids are per lot as numbered in the catalog and no lots shall be divided or combined for sale.

4. We reserve the right to reject a bid from any bidder, to split any bidding increment, and to advance the bidding in any manner the auctioneer may decide. In the event of any dispute between bidders, or in the event the auctioneer doubts the validity of any bid, the auctioneer shall have sole and final discretion either to determine the successful bidder or to re-offer and resell the article in dispute. If any dispute arises after the sale, our sales records shall be conclusive in all respects.

5. If we are prevented by fire, theft or any other reason whatsoever from delivering any property to the purchaser or a sale otherwise cannot be completed, our liability shall be limited to the sum actually paid therefor by the purchaser and shall in no event include any compensatory, incidental or consequential damages.

6. If a lot is offered subject to a reserve, we may implement such reserve by bidding on behalf of the consignor, whether by opening bidding or continuing bidding in response to other bidders until reaching the reserve. If we have an interest in an offered lot and the proceeds therefrom other than our commissions, we may bid therefor to protect such interest. CONSIGNORS ARE NOT ALLOWED TO BID ON THEIR OWN ITEMS.

7. All statements contained in the catalog or in any bill of sale, condition report, invoice or elsewhere as to authorship, period, culture, source, origin, measurement, quality, rarity, provenance, importance, exhibition and literature of historical relevance, or physical condition ARE QUALIFIED STATEMENTS OF OPINION AND NOT REPRESENTATIONS OR WARRANTIES. No employee or agent of Bonhams is authorized to make on our behalf or on that of the consignor any representation or warranty, oral or written, with respect to any property.

8. All purchased property shall be removed from the premises at which the sale is conducted by the date(s) and time(s) set forth in the "Buyer's Guide" portion of the catalog. If not so removed, daily storage fees will be payable to us by the purchaser as set forth therein. We reserve the right to transfer property not so removed to an offsite warehouse at the purchaser's risk and expense, as set forth in more detail in the "Buyer's Guide." Accounts must be settled in full before property will be released. Packing and handling of purchased lots are the responsibility of the purchaser. Bonhams can provide packing and shipping services for certain items as noted in the "Buyer's Guide" section of the catalog.

9. The copyright in the text of the catalog and the photographs, digital images and illustrations of lots in the catalog belong to Bonhams or its licensors. You will not reproduce or permit anyone else to reproduce such text, photographs, digital images or illustrations without our prior written consent.

10. These Conditions of Sale shall bind the successors and assigns of all bidders and purchasers and inure to the benefit of our successors and assigns. No waiver, amendment or modification of the terms hereof (other than posted notices or oral announcements during the sale) shall bind us unless specifically stated in writing and signed by us. If any part of these Conditions of Sale is for any reason invalid or unenforceable, the rest shall remain valid and enforceable.

11. These Conditions of Sale and the purchaser's and our respective rights and obligations hereunder are governed by the laws of the State of California. By bidding at an auction, each purchaser and bidder agrees to be bound by these Conditions of Sale. Any dispute, controversy or claim arising out of or relating to this agreement, or the breach, termination or validity thereof, brought by or against Bonhams (but not including claims brought against the consignor by the purchaser of lots consigned hereunder) shall be resolved by the procedures set forth below.

SALES AND USE TAX

New York sales tax is charged on the hammer price, buyer's premium and any other applicable charges on any property collected or delivered in New York State, regardless of the state or country in which the purchaser resides or does business. Purchasers who make direct arrangements for collection by a shipper who is considered a "private" or "contract" carrier by the New York Department of Taxation and Finance will be charged New York sales tax, regardless of the destination of the property. Property collected for delivery to a destination outside of New York by a shipper who is considered a "common carrier" by the New York Department of Taxation and Finance (e.g. United States Postal Service, United Parcel Service, and FedEx) is not subject to New York sales tax, but if it is delivered into any state in which Bonhams is registered or otherwise conducts business sufficient to establish a nexus, Bonhams may be required by law to collect and remit the appropriate sales tax in effect in such state. Property collected for delivery outside of the United States by a freight-forwarder who is registered with the Transportation Security Administration ("TSA") is not subject to New York sales tax.

MEDIATION AND ARBITRATION PROCEDURES

(a) Within 30 days of written notice that there is a dispute, the parties or their authorized and empowered representatives shall meet by telephone and/or in person to mediate their differences. If the parties agree, a mutually acceptable mediator shall be selected and the parties will equally share such mediator's fees. The mediator shall be a retired judge or an attorney familiar with commercial law and trained in or qualified by experience in handling mediations. Any communications made during the mediation process shall not be admissible in any subsequent arbitration, mediation or judicial proceeding. All proceedings and any resolutions thereof shall be confidential, and the terms governing arbitration set forth in paragraph (c) below shall govern.

(b) If mediation does not resolve all disputes between the parties, or in any event no longer than 60 days after receipt of the written notice of dispute referred to above, the parties shall submit the dispute for binding arbitration before a single neutral arbitrator. Such arbitrator shall be a retired judge or an attorney familiar with commercial law and trained in or qualified by experience in handling arbitrations. Such arbitrator shall make all appropriate disclosures required by law. The arbitrator shall be drawn from a panel of a national arbitration service agreed to by the parties, and shall be selected as follows: (i) If the national arbitration service has specific rules or procedures, those rules or procedures shall be followed; (ii) If the national arbitration service does not

have rules or procedures for the selection of an arbitrator, the arbitrator shall be an individual jointly agreed to by the parties. If the parties cannot agree on a national arbitration service, the arbitration shall be conducted by the American Arbitration Association, and the arbitrator shall be selected in accordance with the Rules of the American Arbitration Association. The arbitrator's award shall be in writing and shall set forth findings of fact and legal conclusions.

(c) Unless otherwise agreed to by the parties or provided by the published rules of the national arbitration service:

(i) the arbitration shall occur within 60 days following the selection of the arbitrator;

(ii) the arbitration shall be conducted in the designated location, as follows: (A) in any case in which the subject auction by Bonhams took place or was scheduled to take place in the State of New York or Connecticut or the Commonwealth of Massachusetts, the arbitration shall take place in New York City, New York; (B) in all other cases, the arbitration shall take place in the city of San Francisco, California; and

(iii) discovery and the procedure for the arbitration shall be as follows:

(A) All arbitration proceedings shall be confidential;

(B) The parties shall submit written briefs to the arbitrator no later than 15 days before the arbitration commences;

(C) Discovery, if any, shall be limited as follows: (I) Requests for no more than 10 categories of documents, to be provided to the requesting party within 14 days of written request therefor; (II) No more than two (2) depositions per party, provided however, the deposition(s) are to be completed within one (1) day; (III) Compliance with the above shall be enforced by the arbitrator in accordance with California law;

(D) Each party shall have no longer than eight (8) hours to present its position. The entire hearing before the arbitrator shall not take longer than three (3) consecutive days;

(E) The award shall be made in writing no more than 30 days following the end of the proceeding. Judgment upon the award rendered by the arbitrator may be entered by any court having jurisdiction thereof.

To the fullest extent permitted by law, and except as

required by applicable arbitration rules, each party shall bear its own attorneys' fees and costs in connection with the proceedings and shall share equally the fees and expenses of the arbitrator.

LIMITED RIGHT OF RESCISSION

If within one (1) year from the date of sale, the original purchaser (a) gives written notice to us alleging that the identification of Authorship (as defined below) of such lot as set forth in the **BOLD TYPE** heading of the catalog description of such lot (as amended by any saleroom notices or verbal announcements during the sale) is not substantially correct based on a fair reading of the catalog (including the terms of any glossary contained therein), and (b) within 10 days after such notice returns the lot to us in the same condition as at the time of sale, and (c) establishes the allegation in the notice to our satisfaction (including by providing one or more written opinions by recognized experts in the field, as we may reasonably require), then the sale of such lot will be rescinded and, unless we have already paid to the consignor monies owed him in connection with the sale, the original purchase price will be refunded.

If, prior to receiving such notice from the original purchaser alleging such defect, we have paid the consignor monies owed him in connection with the sale, we shall pay the original purchaser the amount of our commissions, any other sale proceeds to which we are entitled and applicable taxes received from the purchaser on the sale and make demand on the consignor to pay the balance of the original purchase price to the original purchaser. Should the consignor fail to pay such amount promptly, we may disclose the identity of the consignor and assign to the original purchaser our rights against the consignor with respect to the lot the sale of which is sought to be rescinded. Upon such disclosure and assignment, any liability of Bonhams as consignor's agent with respect to said lot shall automatically terminate.

The foregoing limited right of rescission is available to the original purchaser only and may not be assigned to or relied upon by any subsequent transferee of the property sold. The purchaser hereby accepts the benefit of the consignor's warranty of title and other representations and warranties made by the consignor for the purchaser's benefit. Nothing in this section shall be construed as an admission by us of any representation of fact, express or implied, obligation or responsibility with respect to any lot. THE PURCHASER'S SOLE AND

EXCLUSIVE REMEDY AGAINST BONHAMS FOR ANY REASON WHATSOEVER IS THE LIMITED RIGHT OF RESCISSION DESCRIBED IN THIS SECTION.

"Authorship" means only the identity of the creator, the period, culture and source or origin of the lot, as the case may be, as set forth in the **BOLD TYPE** heading of the print catalog entry. The right of rescission does not extend to: (a) works of art executed before 1870 (unless these works are determined to be counterfeits created since 1870), as this is a matter of current scholarly opinion which can change; (b) titles, descriptions, or other identification of offered lots, which information normally appears in lower case type below the **BOLD TYPE** heading identifying the Authorship; (c) Authorship of any lot where it was specifically mentioned that there exists a conflict of specialist or scholarly opinion regarding the Authorship of the lot at the time of sale; (d) Authorship of any lot which as of the date of sale was in accordance with the then generally-accepted opinion of scholars and specialists regarding the same; or (e) the identification of periods or dates of creation in catalog descriptions which may be proven inaccurate by means of scientific processes that are not generally accepted for use until after publication of the catalog in which the property is offered or that were unreasonably expensive or impractical to use at the time of such publication.

LIMITATION OF LIABILITY

EXCEPT AS EXPRESSLY PROVIDED ABOVE, ALL PROPERTY IS SOLD "AS IS." NEITHER BONHAMS NOR THE CONSIGNOR MAKES ANY REPRESENTATION OR WARRANTY, EXPRESS OR IMPLIED, AS TO THE MERCHANTABILITY, FITNESS OR CONDITION OF THE PROPERTY OR AS TO THE CORRECTNESS OF DESCRIPTION, GENUINENESS, ATTRIBUTION, PROVENANCE OR PERIOD OF THE PROPERTY OR AS TO WHETHER THE PURCHASER ACQUIRES ANY COPYRIGHTS OR OTHER INTELLECTUAL PROPERTY RIGHTS IN LOTS SOLD OR AS TO WHETHER A WORK OF ART IS SUBJECT TO THE ARTIST'S MORAL RIGHTS OR OTHER RESIDUAL RIGHTS OF THE ARTIST. THE PURCHASER EXPRESSLY ACKNOWLEDGES AND AGREES THAT IN NO EVENT SHALL BONHAMS BE LIABLE FOR ANY DAMAGES INCLUDING, WITHOUT LIMITATION, ANY COMPENSATORY, INCIDENTAL OR CONSEQUENTIAL DAMAGES.

SELLER'S GUIDE

SELLING AT AUCTION

Bonhams can help you every step of the way when you are ready to sell art, antiques and collectible items at auction. Our regional offices and representatives throughout the US are available to service all of your needs. Should you have any further questions, please visit our website at www.bonhams.com/us for more information or call our Client Services Department at +1 (212) 644 9001.

AUCTION ESTIMATES

The first step in the auction process is to determine the auction value of your property. Bonhams' world-renowned specialists will evaluate your special items at no charge and in complete confidence. You can obtain an auction estimate in many ways:

- Attend one of our Auction Appraisal Events held regularly at our galleries and in other major metropolitan areas. The updated schedule for Bonhams Auction Appraisal Events is available at www.bonhams.com/us.
- Call our Client Services Department to schedule a private appointment at one of our galleries. If you have a large collection, our specialists can travel, by appointment, to evaluate your property on site.
- Send clear photographs to us of each individual item, including item dimensions and other pertinent information with each picture. Photos should be sent to Bonhams' address in envelopes marked

as "photo auction estimate". Alternatively, you can submit your request using our online form at www.bonhams.com/us. Digital images may be attached to the form. Please limit your images to no more than five (5) per item.

CONSIGNING YOUR PROPERTY

After you receive an estimate, you may consign your property to us for sale in the next appropriate auction. Our staff assists you throughout the process, arranging transportation of your items to our galleries (at the consignor's expense), providing a detailed inventory of your consignment, and reporting the prices realized for each lot. We provide secure storage for your property in our warehouses and all items are insured throughout the auction process. You will receive payment for your property approximately 35 days after completion of sale.

Sales commissions vary with the potential auction value of the property and the particular auction in which the property is offered. Please call us for commission rates.

PROFESSIONAL APPRAISAL SERVICES

Bonhams' specialists conduct insurance and fair market value appraisals for private collectors, corporations, museums, fiduciaries and government entities on a daily basis. Insurance appraisals, used for insurance purposes, reflect the cost of replacing property in today's retail market. Fair market value appraisals are used for estate,

tax and family division purposes and reflect prices paid by a willing buyer to a willing seller.

When we conduct a private appraisal, our specialists will prepare a thorough inventory listing of all your appraised property by category. Valuations, complete descriptions and locations of items are included in the documentation.

Appraisal fees vary according to the nature of the collection, the amount of work involved, the travel distance, and whether the property is subsequently consigned for auction.

Our appraisers are available to help you anywhere and at any time. Please call our Client Services Department to schedule an appraisal.

ESTATE SERVICES

Since 1865, Bonhams has been serving the needs of fiduciaries – lawyers, trust officers, accountants and executors – in the disposition of large and small estates. Our services are specially designed to aid in the efficient appraisal and disposition of fine art, antiques, jewelry, and collectibles. We offer a full range of estate services, ranging from flexible financial terms to tailored accounting for heirs and their agents to world-class marketing and sales support.

For more information or to obtain a detailed Trust and Estates package, please visit our website at www.bonhams.com/us or contact our Client Services Department.

BUYER’S GUIDE

BIDDING & BUYING AT AUCTION

Whether you are an experienced bidder or an enthusiastic novice, auctions provide a stimulating atmosphere unlike any other. Bonhams previews and sales are free and open to the public. As you will find in these directions, bidding and buying at auction is easy and exciting. Should you have any further questions, please visit our website at www.bonhams.com or call our Client Services Department at +1 (212) 644 9001.

Catalogs

Before each auction we publish illustrated catalogs. Our catalogs provide descriptions and estimated values for each "lot." A lot may refer to a single item or to a group of items auctioned together. The catalogs also include the dates and the times for the previews and auctions. We offer our catalogs by subscription or by single copy. For information on subscribing to our catalogs, you may refer to the subscription form in this catalog, call our Client Services Department, or visit our website at www.bonhams.com/us.

Previews

Auction previews are your chance to inspect each lot prior to the auction. We encourage you to look closely and examine each object on which you may want to bid so that you will know as much as possible about it. Except as expressly set forth in the Conditions of Sale, items are sold "as is" and with all faults; illustrations in our catalogs, website and other materials are provided for identification only. At the previews, our staff is always available to answer your questions and guide you through the auction process. Condition reports may be available upon request.

Estimates

Bonhams catalogs include low and high value estimates for each lot, exclusive of the buyer's premium and tax. The estimates are provided as an approximate guide to current market value based primarily on previous auction results for comparable pieces, and should not be interpreted as a representation or prediction of actual selling prices. They are determined well in advance of a sale and are subject to revision. Please contact us should you have any questions about value estimates.

Reserves

Unless indicated by the Ⓜ symbol next to the lot number, which denotes no reserve, all lots in the catalog are subject to a reserve. The reserve is the minimum auction price that the consignor is willing to accept for a lot. This amount is confidential and does not exceed the low estimate value.

Auction House's Interest in Property Offered at Auction

On occasion, Bonhams may offer property in which it has an ownership interest in whole or in part or otherwise has an economic interest. Such property, if any, is identified in the catalog with a ▲ symbol next to the lot number(s).

Bonhams may also offer property for a consignor that has been guaranteed a minimum price for its property by Bonhams or jointly by Bonhams and a third party. Bonhams and any third parties providing a guarantee may benefit financially if the guaranteed property is sold successfully and may incur a financial loss if its sale is not successful. Such property, if any, is identified in the catalog with a ○ symbol next to the lot number(s).

Bidding at Auction

At Bonhams, you can bid in many ways: in person, via absentee bid, over the phone, or via Bonhams' live online bidding facility. Absentee bids can be submitted in person, online, via fax or via email.

Valid Bonhams client accounts are required to participate in bidding activity. You can obtain registration information online, at the reception desk or by calling our Client Services Department.

By bidding at auction, whether in person or by agent, by absentee bid, telephone, online or other means, the buyer or bidder agrees to be bound by the Conditions of Sale.

Lots are auctioned in consecutive numerical order as they appear in the catalog. Bidding normally begins below the low estimate. The auctioneer will accept bids from interested parties present in the saleroom, from telephone bidders, and

from absentee bidders who have left written bids in advance of the sale. The auctioneer may also execute bids on behalf of the consignor by placing responsive or consecutive bids for a lot up to the amount of the reserve, but never above it.

We assume no responsibility for failure to execute bids for any reason whatsoever.

In Person

If you are planning to bid at auction for the first time, you will need to register at the reception desk in order to receive a numbered bid card. To place a bid, hold up your card so that the auctioneer can clearly see it. Decide on the maximum auction price that you wish to pay, exclusive of buyer's premium and tax, and continue bidding until your bid prevails or you reach your limit. If you are the successful bidder on a lot, the auctioneer will acknowledge your paddle number and bid amount.

Absentee Bids

As a service to those wishing to place bids, we may at our discretion accept bids without charge in advance of auction online or in writing on bidding forms available from us. "Buy" bids will not be accepted; all bids must state the highest bid price the bidder is willing to pay. Our auction staff will try to bid just as you would, with the goal of obtaining the item at the lowest bid price possible. In the event identical bids are submitted, the earliest bid submitted will take precedence. Absentee bids shall be executed in competition with other absentee bids, any applicable reserve, and bids from other auction participants. A friend or agent may place bids on your behalf, provided that we have received your written authorization prior to the sale. Absentee bid forms are available in our catalogs, online at www.bonhams.com/us, at offsite auction locations, and at our San Francisco, Los Angeles and New York galleries.

By Telephone

Under special circumstances, we can arrange for you to bid by telephone. To arrange for a telephone bid, please contact our Client Services Department a minimum of 24 hours prior to the sale.

Online

We offer live online bidding for most auctions and accept absentee bids online for all our auctions. Please visit www.bonhams.com/us for details.

Bid Increments

Bonhams generally uses the following increment multiples as bidding progresses:

\$50-200	by \$10s
\$200-500	by \$20/50/80s
\$500-1,000	by \$50s
\$1,000-2,000	by \$100s
\$2,000-5,000	by \$200/500/800s
\$5,000-10,000	by \$500s
\$10,000-20,000	by \$1,000s
\$20,000-50,000	by \$2,000/5,000/8,000s
\$50,000-100,000	by \$5,000s
\$100,000-200,000	by \$10,000s
above \$200,000	at auctioneer's discretion

The auctioneer may split or reject any bid at any time at his or her discretion as outlined in the Conditions of Sale.

Currency Converter

Solely for the convenience of bidders, a currency converter may be provided at Bonhams' auctions. The rates quoted for conversion of other currencies to U.S. Dollars are indications only and should not be relied upon by a bidder, and neither Bonhams nor its agents shall be responsible for any errors or omissions in the operation or accuracy of the currency converter.

Buyer's Premium

A buyer's premium is added to the winning bid price of each individual lot purchased, at the rates set forth in the Conditions of Sale. The winning bid price plus the premium constitute the purchase price for the lot. Applicable sales taxes are computed based on this figure, and the total becomes your final purchase price.

Unless specifically illustrated and noted, fine art frames are not included in the estimate or purchase price. Bonhams accepts no liability for damage or loss to frames during storage or shipment.

All sales are final and subject to the Conditions of Sale found in our catalogs, on our website, and available at the reception desk.

Payment

All buyers are asked to pay and pick up by 3pm on the business day following the auction. Payment may be made to Bonhams by cash, checks drawn on a U.S. bank, money order, wire transfer, or by Visa, MasterCard, American Express or Discover credit or charge card or debit card. All items must be paid for within 5 business days of the sale. Please note that payment by personal or business check may result in property not being released until purchase funds clear our bank. For payments sent by mail, please remit to Cashier Department, 220 San Bruno Avenue, San Francisco, CA 94103.

Sales Tax

Residents of states listed in Paragraph 1 of the Conditions of Sale must pay applicable sales tax. Other state or local taxes (or compensation use taxes) may apply. Sales tax will be automatically added to the invoice unless a valid resale number has been furnished or the property is shipped via common carrier to destinations outside the states listed in the Conditions of Sale. If you wish to use your resale license please contact Cashiers for our form.

Shipping & Removal

Bonhams can accommodate shipping for certain items. Please contact our Cashiers Department for more information or to obtain a quote. Carriers are not permitted to deliver to PO boxes.

International buyers are responsible for all import/export customs duties and taxes. An invoice stating the actual purchase price will accompany all international purchases.

Collection of Purchases

Please arrange for the packing and transport of your purchases prior to collection at our office. If you are sending a third party shipper, please request a release form from us and return it to +1 (212) 644 9009 prior to your scheduled pickup. To schedule collection of purchases, please call +1 (212) 644 9001.

Auction Results

All you need is a touch-tone telephone and the lot number. Auction results are usually available on the next business day following the sale or online at www.bonhams.com/us.

DIAMONDS, COLORED STONES & PEARLS

The Jewelry department of Bonhams & Butterfields recognizes that there are many various forms of treatments and enhancements used in diamonds and colored stones in order to improve their appearance and or color. Techniques such as heat treatment have been used to improve the color and transparency of both sapphires and rubies in addition to other gemstones. Techniques such as oiling have been used to enhance the clarity of emeralds while dying has been used to effect the color of jade. Techniques such as heat treatment, oiling, resin impregnation, irradiation, color diffusion, dying, fracture filling, and HTHP are just a few off the techniques that are in use today. Prospective buyers are therefore reminded that unless otherwise noted in our catalog description it must be assumed that some form of enhancement may have been used and that such treatment may not always be permanent or detectable and that our estimates have taken such possibilities into account. As a matter of policy, Bonhams & Butterfields endeavors to obtain certificates from recognized gemological laboratories when such certificates are deemed crucial to the authenticity of a gemstone. It is not possible however to gain certificates for all items offered for sale and it is therefore recommended where there is no mention of a certificate that all prospective buyers consult with one of our department specialists prior to purchase of such items.

PLEASE NOTE: A number of laboratories issue certificates that give more detailed descriptions of gemstones, however there may not be consensus between different laboratories on the degrees, or types of treatment for any particular gemstone. Neither is there necessarily consensus between different laboratories, or private appraisers, on the grading of diamonds. All gemstone weights are approximations only and although an independent laboratory grading may be used in the catalog text, we cannot guarantee such gradings.

Images shown may appear smaller or larger than actual size.

Although we endeavor to mention in our descriptions significant defects, needed repairs, absent stones and the like, WE DO NOT GUARANTEE THAT THE DESCRIPTIONS ARE COMPREHENSIVE. Please examine all lots carefully. It is the responsibility of the prospective bidder, or his agent, to determine the condition of lots during the preview. Condition reports have been created for most lots in this auction, and are available upon request. Please contact the Jewelry department at least two days prior to the sale date for additional information.

NOTICE REGARDING BURMESE JADEITE AND RUBIES

Current law dictates that jadeite and rubies of Burmese origin and any articles of jewelry containing jadeite or rubies of Burmese origin may not be imported into the U.S. Certification that such jadeite or rubies were not mined in or extracted from Burma is required for importation of them into the U.S.

It is the responsibility of the buyer to investigate any applicable restrictions on purchased property and to obtain any export or import licenses and/or certificates as well as any other required documentation before shipping. The buyer's inability to export or import any such items or to do so timely shall not serve as the basis for any cancellation or rescission of the sale or any delay in payment. Prospective buyers who are uncertain as to whether a lot is subject to these restrictions or any other restrictions on importation or exportation are advised to consult with the specialist department in which the property is offered.

REGULATED SPECIES MATERIALS AND CITES PERMITS

The export of a lot from the United States or import into certain countries may be subject to export or import regulations, licensure and/or other restrictions; in particular, lots containing plant or animal materials such as ivory, rhinoceros horn, tortoiseshell, coral, whalebone or certain types of woods, irrespective of age or value, may require the granting of one or more export or import licenses

or certificates, or may be banned from import altogether by some countries. Moreover, the ability to obtain an export license or certificate does not insure the ability to obtain an import license or certificate in another country. Lots that contain such regulated species materials may also not be eligible for exportation or for re-importation into the United States if they are not at least 100 years of age, and, under current law, lots containing African Elephant Ivory may no longer be re-imported into the United States regardless of age. In addition, resales of lots containing certain regulated species materials may be subject to restrictions in some jurisdictions.

Lots noted in the catalog with a **Y** next to the lot number contain one or more such regulated plant or animal materials. **It is the buyer's responsibility to investigate any such restrictions and to obtain any relevant export or import licenses. Please note that this process is governed by local authorities and may take considerable time. Regardless of any delay in the obtaining of an export or import license or certificate or denial of a license's or certificate's issuance, purchased lots shall be paid for in accordance with the Conditions of Sale, and any such delay or denial shall not serve as the basis for cancellation of any sale.** Prospective buyers are advised to obtain information from the relevant regulatory authorities regarding export and import restrictions, requirements, and costs prior to bidding.

Prospective buyers should also check with their local (e.g. state) regulatory authorities regarding any local restrictions and/or permit requirements that may apply with respect to purchases of regulated species materials, including without limitation purchases of items containing elephant ivory or rhino horn. For example, we are advised that New York buyers of any lot containing elephant or mammoth ivory or rhino horn will be responsible for obtaining a New York State permit before taking possession of the lot within New York State, and that the State of New Jersey has banned the import of items containing elephant or marine mammal ivory or rhino horn into that state.

Upon request, Bonhams can refer the purchaser to a third party agent to assist the purchaser in attempting to obtain the appropriate licenses and/or certificates. However, there is no assurance that any necessary licenses or certificates can be obtained. Please contact the Specialist Department for a suggested list of shipping agents prior to placing a bid if you are uncertain as to whether a lot is subject to export/import license or certificate requirements or related restrictions.

WATCHES

Although we endeavor to mention in our descriptions significant defects, needed repairs, absent stones and the like, WE DO NOT GUARANTEE THAT THE DESCRIPTIONS ARE COMPREHENSIVE. Please examine all watches carefully. It is the responsibility of the prospective bidder, or his agent, to determine the condition of watches during the preview. Except as expressly set forth in the Conditions of Sale, all watches are sold "as is". We do not guarantee the accuracy or operation of any watch function such as timekeeping, chronograph, calendar, repeater or register.

We make no judgments as to whether diamond dials or diamond bezels originated at the factory or are later additions.

Auction Registration Form

(Attendee / Absentee / Online / Telephone Bidding)

Please circle your bidding method above.

<input type="checkbox"/>	<input type="checkbox"/>	<input type="checkbox"/>	<input type="checkbox"/>
--------------------------	--------------------------	--------------------------	--------------------------

Paddle number (for office use only)

General Notice: This sale will be conducted in accordance with Bonhams Conditions of Sale, and your bidding and buying at the sale will be governed by such terms and conditions. Please read the Conditions of Sale in conjunction with the Buyer's Guide relating to this sale and other published notices and terms relating to bidding. Payment by personal or business check may result in your property not being released until purchase funds clear our bank. Checks must be drawn on a U.S. bank.

Notice to Absentee Bidders: In the table below, please provide details of the lots on which you wish to place bids at least 24 hours prior to the sale. Bids will be rounded down to the nearest increment. Please refer to the Buyer's Guide in the catalog for further information relating to instructions to Bonhams to execute absentee bids on your behalf. Bonhams will endeavor to execute bids on your behalf but will not be liable for any errors or non-executed bids.

Notice to First Time Bidders: New clients are requested to provide photographic proof of ID - passport, driving license, ID card, together with proof of address - utility bill, bank or credit card statement etc. Corporate clients should also provide a copy of their articles of association / company registration documents, together with a letter authorizing the individual to bid on the company's behalf. Failure to provide this may result in your bids not being processed. For higher value lots you may also be asked to provide a bankers reference.

Notice to online bidders: If you have forgotten your username and password for www.bonhams.com, please contact Client Services.

If successful

I will collect the purchases myself ☐
Please contact me with a shipping quote (if applicable) ☐
I will arrange a third party to collect my purchase(s) ☐

Please email or fax the completed Registration Form and requested information to:

Bonhams Client Services Department
580 Madison Avenue
New York, New York 10022
Tel +1 (212) 644 9001
Fax +1 (212) 644 9009
bids.us@bonhams.com

Bonhams

Sale title: Fine Jewelry	Sale date: Monday December 4, 2017
Sale no. 24183	Sale venue: New York
General Bid Increments: \$10 - 200by 10s \$200 - 500by 20 / 50 / 80s \$500 - 1,000by 50s \$1,000 - 2,000by 100s \$2,000 - 5,000by 200 / 500 / 800s \$5,000 - 10,000by 500s \$10,000 - 20,000by 1,000s \$20,000 - 50,000by 2,000 / 5,000 / 8,000s \$50,000 - 100,000by 5,000s \$100,000 - 200,000by 10,000s above \$200,000at the auctioneer's discretion The auctioneer has discretion to split any bid at any time.	
Customer Number	Title
First Name	Last Name
Company name (to be invoiced if applicable)	
Address	
City	County / State
Post / Zip code	Country
Telephone mobile	Telephone daytime
Telephone evening	Fax
Telephone bidders: indicate primary and secondary contact numbers by writing ① or ② next to the telephone number.	
E-mail (in capitals) _____ By providing your email address above, you authorize Bonhams to send you marketing materials and news concerning Bonhams and partner organizations. Bonhams does not sell or trade email addresses.	
I am registering to bid as a private client <input type="checkbox"/>	I am registering to bid as a trade client <input type="checkbox"/>
Resale: please enter your resale license number here _____ We may contact you for additional information.	

SHIPPING	
Shipping Address (if different than above):	
Address: _____	Country: _____
City: _____	Post/ZIP code: _____

Please note that all telephone calls are recorded.

Type of bid (A-Absentee, T-Telephone)	Lot no.	Brief description (In the event of any discrepancy, lot number and not lot description will govern.) If you are bidding online there is no need to complete this section.	MAX bid in US\$ (excluding premium and applicable tax) Emergency bid for telephone bidders only*

You instruct us to execute each absentee bid up to the corresponding bid amount indicated above.

* Emergency Bid: A maximum bid (exclusive of Buyer's Premium and tax) to be executed by Bonhams only if we are unable to contact you by telephone or should the connection be lost during bidding.

BY SIGNING THIS FORM YOU AGREE THAT YOU HAVE READ AND UNDERSTAND OUR CONDITIONS OF SALE AND SHALL BE LEGALLY BOUND BY THEM, AND YOU AGREE TO PAY THE BUYER'S PREMIUM, ANY APPLICABLE TAXES, AND ANY OTHER CHARGES MENTIONED IN THE BUYER'S GUIDE OR CONDITIONS OF SALE. THIS AFFECTS YOUR LEGAL RIGHTS.

Your signature:

Date:



Bonhams

580 Madison Avenue
New York, New York 10022

+1 (212) 644 9001
+1 (212) 644 9009 fax

