

JEWELLERY

Wednesday 13 May 2015

Knightsbridge, London



Bonhams



125 (obverse)



125 (reverse)

JEWELLERY

Wednesday 13 May 2015 at 11.00
Knightsbridge, London

BONHAMS

Montpelier Street
Knightsbridge
London SW7 1HH
www.bonhams.com

VIEWING

Sunday 10 May
11.00 – 15.00
Monday 11 May
09.30 – 16.30
Tuesday 12 May
09.30 – 16.30
Wednesday 13 May
09.00 – 10.00, by appointment only

TRADE VIEW

Thursday 7 May
09.30 – 16.30, by appointment only

BIDS

+44 (0) 20 7447 7447
+44 (0) 20 7447 7401 fax
To bid via the internet please visit
www.bonhams.com

Please note that bids should be submitted no later than 24 hours prior to the sale. New bidders must also provide proof of identity when submitting bids. Failure to do this may result in your bids not being processed.

Bidding by telephone will only be accepted on a lot with a lower estimate in excess of £500.

LIVE ONLINE BIDDING IS AVAILABLE FOR THIS SALE

Please email bids@bonhams.com with "Live bidding" in the subject line 48 hours before the auction to register for this service.

ENQUIRIES

Carole Gordon FGA DGA
Kristian Spofforth FGA
Sarah Duncan
Jennifer Tonkin
Charlotte Elmer
+44 (0)20 7393 3972
jewellery@bonhams.com

ADMINISTRATION

+44 (0)20 7393 3970

PRESS ENQUIRIES

press@bonhams.com

CUSTOMER SERVICES

Monday to Friday 08.30 – 18.00
+44 (0) 20 7447 7447

SALE NUMBER:

22631

CATALOGUE: £10

Please see back of catalogue for important notice to bidders

ILLUSTRATIONS

Front cover illustration: Lot 295
Inside front cover: Lot 125
Inside back cover: Lot 124
Back cover illustration: Lot 294

Please note that as a result of recent legislation ruby and jadeite gemstones of Burmese (Myanmar) origin may not be imported into the US. Rubies and jadeite of non-Burmese origin require certification before import into the US. Items affected are marked with a symbol ≈

Watches

Important Notice Regarding Importation into the United States of Corum, Franck Muller, Piaget and Rolex watches.
Bonhams cannot arrange for the delivery of Corum, Franck Muller, Piaget, Tudor and Rolex watches into The United States. The buyer or designated agent may collect the property in the country of sale.
Please also note that in some circumstances we are unable to ship the watch with its strap due to certain import restrictions.

IMPORTANT INFORMATION

The United States Government has banned the import of ivory into the USA. Lots containing ivory are indicated by the symbol Φ printed beside the lot number in this catalogue.



Bonhams 1793 Limited

Registered No. 4326560
Registered Office: Montpelier Galleries
Montpelier Street, London SW7 1HH

+44 (0) 20 7393 3900
+44 (0) 20 7393 3905 fax

Bonhams 1793 Ltd Directors

Robert Brooks Co-Chairman,
Malcolm Barber Co-Chairman,
Colin Sheaf Deputy Chairman,
Matthew Girling Global CEO,
Patrick Meade Global CEO,
Geoffrey Davies, Jonathan Horwich,
James Knight, Caroline Oliphant,
Hugh Watchorn.

Bonhams UK Ltd Directors

Colin Sheaf Chairman, Jonathan Baddeley,
Antony Bennett, Matthew Bradbury,
Lucinda Bredin, Harvey Cammell, Simon Cottle,
Andrew Currie, Paul Davidson, Jean Ghika,
Charles Graham-Campbell, Miranda Grant,
Richard Harvey, Robin Hereford, Asaph Hyman,
Charles Lanning, Sophie Law, Fergus Lyons,
Gordon McFarlan,

Andrew McKenzie, Simon Mitchell, Jeff Muse,
Mike Neill, Charlie O'Brien, Giles Peppiatt,
Peter Rees, Iain Rushbrook, John Sandon,
Tim Schofield, Veronique Scorer,
James Stratton, Roger Tappin, Ralph Taylor,
Shahin Virani, David Williams,
Michael Wynell-Mayow, Suzannah Yip.

1

AN 'ALHAMBRA' BRACELET, BY VAN CLEEF & ARPELS

The fine-link chain set with five clover-shaped textured tablets, *signed VCA, numbered, length 20.0cm*

£1,500 - 2,000 €2,100 - 2,800

2

A DIAMOND SINGLE-STONE RING, 1979

The brilliant-cut diamond, in an eight-claw setting, to a yellow gold band, *diamond approx. 1.70cts, maker's mark CLM, partial UK hallmark, ring size L (sizing beads)*

£4,000 - 6,000 €5,500 - 8,300

3

AN ONYX NECKLACE AND BRACELET SUITE, BY BULGARI

Each composed of three circular plaques, set with onyx discs to a cable-link chain, *signed Bulgari, lengths: necklace 41.0cm, bracelet 19.9cm (2)*

£2,000 - 3,000 €2,800 - 4,200

4

TWO PAIRS OF EARCLIPS, BY POMELLATO AND A PAIR OF TOURMALINE EARCLIPS

1st: Each textured hoop highlighted by shallow impressions, 2nd: Each hoop set with a trio of cabochon citrines, 3rd: Each circular fancy-cut pink tourmaline, collet-set in a brushed disk, *1st & 2nd signed Pomellato, lengths: 2.2cm, 2.3cm, 1.9cm (3)*

£1,000 - 1,500 €1,400 - 2,100

5

A PAIR OF EARRINGS, BY BULGARI

Each hoop suspending a sprung-cylinder and a trio of discs on trace-link chains, *signed Bulgari, length 7.9cm*

£1,200 - 1,500 €1,700 - 2,100

6

A YELLOW SAPPHIRE SINGLE-STONE RING

The oval-shaped yellow sapphire, mounted in a ten-claw setting, *ring size O*

£3,000 - 3,500 €4,200 - 4,900

7

A DIAMOND THREE-STONE RING

The old brilliant-cut diamonds, mounted in claw settings with the largest to the centre, *principal diamond approx. 1.00ct, remaining diamonds approx. 0.80ct total, maker's mark FT, ring size P*

£1,800 - 2,200 €2,500 - 3,000

8

A GOLD 'PANTHÈRE DE CARTIER' WRISTWATCH, BY CARTIER, CIRCA 1985

The circular dial with Roman numeral hour markers, to an 18 carat yellow gold figaro-link bracelet, *signed Cartier, numbered, European convention marks, Swiss assay marks, length 16.4cm, maker's case*

£2,000 - 3,000 €2,800 - 4,200

9

A DIAMOND CLUSTER RING, BY KUTCHINSKY, 1979

The brilliant-cut diamond mounted in a four-claw setting, within a surround of similarly-cut diamonds to an 18 carat yellow gold band, *principal diamond approx. 1.10cts, remaining diamonds approx. 1.60cts total, maker's mark Kld, London hallmark, ring size M*

£2,000 - 3,000 €2,800 - 4,200

10

A DIAMOND BANGLE

The brilliant-cut diamonds, mounted in collet-settings, to a textured bangle, *diamonds approx. 1.60cts total, inner diameter 5.8cm*

£1,000 - 1,500 €1,400 - 2,100



2

3

4

4

5

3

9

6

7

4

8

10

11 ≈

A RUBY AND DIAMOND RING

The five circular-cut rubies within a surround of brilliant-cut diamonds, *diamonds approx. 0.75ct total, ring size O*

£2,500 - 3,500 €3,500 - 4,900

12

A PAIR OF DIAMOND FLORAL EARSTUDS

Each flowerhead set with pear-shaped diamonds, *diamonds approx. 1.00ct total, length 0.9cm*

£800 - 1,000 €1,100 - 1,400

13

A CULTURED PEARL NECKLACE

The three strands of 6.9mm-7.3mm cultured pearls, to a floral clasp set with brilliant-cut diamonds, *diamonds approx. 0.95ct total, length of shortest strand 43.0cm*

£1,500 - 2,000 €2,100 - 2,800

14

AN EMERALD PENDANT

The emerald tablet carved with floral motifs, mounted in a four-claw setting to a brilliant-cut diamond surmount, *length 4.3cm*

£5,000 - 6,000 €6,900 - 8,300

15

A DIAMOND SINGLE-STONE RING

The brilliant-cut diamond, mounted in a four-claw setting, to an interlocking gallery and platinum band, *diamond approx. 1.20cts, maker's mark 'HM', partial UK hallmark, ring size N*

£2,000 - 3,000 €2,800 - 4,200

16

A DIAMOND RIVIÈRE

Designed as a graduated line of brilliant-cut diamonds, each mounted in a collet-setting, *diamonds approx. 2.15cts total, length 38.9cm*

£2,000 - 3,000 €2,800 - 4,200

17

A DIAMOND DRESS RING

Designed as a tiered hexagonal plaque of brilliant-cut diamonds, *diamonds approx. 4.60cts total, ring size V*

£1,800 - 2,200 €2,500 - 3,000

18

A PAIR OF CULTURED PEARL AND DIAMOND PENDENT EARRINGS

Each flowerhead centrally-set with a 10.9mm cultured pearl, within a petal surround of pavé-set brilliant-cut diamonds, to a similarly-cut diamond surmount, *diamonds approx. 1.85cts total, length 4.3cm*

£1,300 - 1,500 €1,800 - 2,100

19

A DIAMOND ETERNITY RING

The uniform line of pavé-set brilliant-cut diamonds, to a polished band, *diamonds approx. 1.85cts total, ring size O½*

£1,000 - 1,200 €1,400 - 1,700

20

AN EMERALD AND DIAMOND THREE-STONE RING

The cut-cornered step-cut emerald, mounted in a ten-claw setting, between brilliant-cut diamonds, *diamonds approx. 1.30cts total, ring size O½*

£1,800 - 2,500 €2,500 - 3,500

21 ≈

A PAIR OF EMERALD, RUBY AND DIAMOND EARRINGS

Each composed of two cascading scrolls, pavé-set with brilliant-cut diamonds and highlighted by cabochon emeralds and a cabochon ruby, *diamonds approx. 1.15cts total, length 6.5cm, cased by William & Son*

£1,500 - 2,000 €2,100 - 2,800

22

A DIAMOND BRACELET

The articulated line of curb-links pavé-set with brilliant-cut diamonds, to a concealed clasp, *diamonds approx. 3.25cts total, length 19.4cm*

£1,500 - 2,000 €2,100 - 2,800

23 ≈

A RUBY AND DIAMOND DRESS RING

The tiered undulating flowerhead set with brilliant-cut diamonds and oval and circular-cut rubies, *diamonds approx. 0.90ct total, ring size M½ (sizing band)*

£1,800 - 2,200 €2,500 - 3,000

24 ≈

A PAIR OF RUBY AND DIAMOND CUFFLINKS

Each plaque pavé-set with single-cut diamonds, within a surround of calibré-cut rubies to a t-bar terminal, *diamonds approx. 0.75ct total, length 1.7cm*

£1,000 - 1,500 €1,400 - 2,100



11

17

12

14

13

18

16

15

19

20

21

22

23

24

25 ≈

A COLLECTION OF FIVE ANTIQUE RINGS, LATE 18TH AND EARLY 19TH CENTURIES

1st: A ruby and diamond memorial ring with enamel decoration to the shank, inscribed '*DORTIGE OBT. 28 JUNE 1746 ÆT. 34*', 2nd: A chased and enamelled 18 carat yellow gold mourning ring with aperture glazed to reveal woven hair, inscribed *In Memory of my dear Father Ob; 26 Octr; 1826 Obt 69*, 3rd: A pearl and diamond cluster ring with foliate shoulders, 4th: A pearl and diamond cluster ring with scrolling shoulders, 5th: A gem-set flower ring with millegrain detail, 2nd with maker's mark 'AC' and London hallmark, pearls untested, respective ring sizes M, M½, M½, N½, K (5)

£1,000 - 1,500 €1,400 - 2,100

26

AN ARCHEOLOGICAL REVIVAL FRINGE NECKLACE, CIRCA 1880

The flattened foxtail-link necklace, centrally suspending a fringe of oval carnelian scarabs, with flowerhead spacers, *length 43.5cm*

£2,500 - 3,000 €3,500 - 4,200

27

A MID 19TH CENTURY HARDSTONE CAMEO BROOCH/ PENDANT

The oval hardstone cameo carved to depict a lady in Renaissance dress, her profile to the right, accented by 2.7mm-2.9mm seed pearls, *later pin fitting, pearls untested, length 4.2cm*

£800 - 1,000 €1,100 - 1,400

28 ≈

A 19TH CENTURY RUBY AND DIAMOND BROOCH/CLASP

The oval cabochon ruby within a surround of rose-cut diamonds, all in closed back settings, *pin detachable, length 2.1cm*

£1,000 - 1,500 €1,400 - 2,100

Provenance

From the collection of Zoe Ionides (1877-1973), thence by descent.

Zoe Ionides was the seventh child of Constantine Alexander Ionides (1833-1900), a wealthy merchant who became a dedicated patron of the arts and friend to some of the most successful artists and designers of the day, including James McNeill Whistler, Dante Gabriel Rossetti, Edward Burne-Jones, William Morris and George Frederick Watts. In 1901, Ionides bequeathed his collection of over 1,100 pictures to the Victoria & Albert Museum. Zoe's portrait, painted by Watts in 1881, is held by the V&A's Museum of Childhood in Bethnal Green, London.

29

A DIAMOND CLUSTER RING, FIRST HALF OF THE 19TH CENTURY

The central old brilliant-cut diamond within a surround of cushion-shaped diamonds, mounted in closed-back settings, between scrolling shoulders, *diamonds approx. 1.35cts total, ring size J*

£1,500 - 2,000 €2,100 - 2,800

30

AN ARCHAEOLOGICAL REVIVAL CARNELIAN-SET BRACELET, CIRCA 1865

In the Etruscan Revival style, composed of seven rectangular cabochon carnelians, between bar spacers terminating in finials, to a clasp set with an oval cabochon carnelian within a granulation surround, *maker's mark CB, composite, length 16.5cm, cased by Rowlandson's of 9 Blenheim Street, London*

£1,200 - 1,500 €1,700 - 2,100

31 Y

AN ARCHAEOLOGICAL REVIVAL CORAL BROOCH, CIRCA 1870

In the Etruscan style, the coral *corallium rubrum* brooch carved as a ram's head beneath an oval surmount carved as a cherub's head, suspending two beads, a vial and stopper, *length 7.2cm*

£1,000 - 1,500 €1,400 - 2,100

This lot will be subject to USA Fish and Wildlife regulations if it is to be imported into the USA.

32 ≈

A SAPPHIRE AND DIAMOND CLUSTER RING AND A RUBY AND DIAMOND CLUSTER RING

1st: The circular-cut sapphire within a surround of single-cut diamonds, between scrolling shoulders, 2nd: The cushion-shaped ruby within a surround of single-cut diamonds, between scrolling shoulders, *diamonds approx. 0.60ct total, respective ring sizes L½ and L (2)*

£1,200 - 1,800 €1,700 - 2,500

33

AN ENAMEL AND DIAMOND SET SERPENT BANGLE

The articulated bangle modelled as a serpent and enamelled in blue, the head and tail set with rose-cut diamonds in closed back settings, *one diamond deficient, inner diameter approx. 5.2cm*

£3,000 - 3,500 €4,200 - 4,900

34

A CULTURED PEARL AND ENAMEL BANGLE, 19TH CENTURY

The hinged bangle of twisted form, decorated with chased foliate motifs and blue enamel, set with a trio of later cultured pearls and rose-cut diamond highlights, *safety chain detached, composite, inner diameter 5.6mm*

£2,000 - 3,000 €2,800 - 4,200



25

26

27

28

29

32

32

31

33

30

34

35

A PAIR OF SAPPHIRE AND DIAMOND HOOP EARRINGS

Each pavé-set throughout with circular-cut sapphires and brilliant-cut diamond highlights, *diamonds approx. 0.35ct total, length 3.2cm*

£700 - 900 €970 - 1,200

36

A PAIR OF DIAMOND EARRINGS

Each designed as a long sweeping blade, pavé-set with brilliant-cut diamonds, *diamonds approx. 0.90ct total, signed Baskania, length 5.6cm*

£700 - 900 €970 - 1,200

37

A PAIR OF DIAMOND EARSTUDS

Each brilliant-cut diamond within a double surround of similarly-cut diamonds, *diamonds approx. 1.50cts total, diameter 1.2cm*

£2,500 - 3,000 €3,500 - 4,200

38

A DIAMOND PENDANT NECKLACE

The openwork pendant set with baguette, brilliant, marquise-cut and pear-shaped diamonds, to a trace-link chain, *diamonds approx. 3.50cts total, lengths: pendant 3.0cm, necklace 41.0cm*

£1,200 - 1,500 €1,700 - 2,100

39

A SAPPHIRE AND DIAMOND BRACELET, BY CARTIER

The continuous line of marquise-cut diamonds mounted in claw-settings, between two rows of circular-cut sapphires, *diamonds approx. 7.35cts total, signed Cartier Paris, maker's mark, French assay mark, length 16.8cm, cased by Cartier*

£3,000 - 4,000 €4,200 - 5,500

40

A SAPPHIRE AND DIAMOND CLUSTER RING

The oval cabochon sapphire mounted in a six-claw setting, within a bombé surround of brilliant-cut diamonds, *diamonds approx. 3.75cts total, ring size H*

£2,500 - 3,000 €3,500 - 4,200

41

A SAPPHIRE AND DIAMOND FLORAL PENDANT NECKLACE

The 18 carat white gold flowerhead set with five pear-shaped sapphire petals and a brilliant-cut diamond stamen, the surrounding borders and surmount pavé-set with similarly-cut diamonds, to a trace-link chain, *diamonds approx. 0.70ct total, maker's mark SE, partial London hallmark, lengths: chain 40.8cm, pendant 2.5cm*

£2,000 - 3,000 €2,800 - 4,200

42

A DIAMOND NECKLACE

The articulated line of graduated brilliant-cut diamonds, terminating in a chevron to a concealed clasp, *diamonds approx. 7.30cts total, length 47.8cm*

£5,500 - 6,500 €7,600 - 9,000

43

A DIAMOND DRESS RING

Featuring a curved line of brilliant-cut diamonds, mounted in four-claw settings, overlaying a series of vertical rows, channel-set with baguette-cut diamonds, *diamonds approx. 2.30cts total, ring size H½*

£1,000 - 1,500 €1,400 - 2,100

44

A DIAMOND BROOCH

Designed as a curved and tapering band, pavé-set with brilliant-cut diamonds, *diamonds approx. 2.60cts total, length 6.7cm*

£1,500 - 2,000 €2,100 - 2,800

45

A PAIR OF SAPPHIRE AND DIAMOND EARRINGS

Each centrally-set with a brilliant-cut diamond, issuing five similarly-cut diamond rays, alternating with pear-shaped sapphires, mounted in 18 carat white gold, *diamonds approx. 0.70ct total, London hallmark, length 1.1cm*

£2,000 - 3,000 €2,800 - 4,200

46

A TANZANITE AND DIAMOND RING

The oval-cut tanzanite mounted in a four-claw setting, between brilliant-cut diamond shoulders, *ring size L*

£1,100 - 1,500 €1,500 - 2,100

47

A LAPIS LAZULI, SAPPHIRE AND DIAMOND WRISTWATCH, 1969

The oval lapis lazuli dial, within a surround of alternating circular-cut sapphires and brilliant-cut diamonds, to a wide 9 carat white gold brick-link bracelet, *diamonds approx. 1.00ct total, maker's mark RMK, London hallmark, length 15.8cm*

£1,500 - 2,000 €2,100 - 2,800

48

A DIAMOND BROOCH

Designed as an openwork wreath of brilliant-cut diamonds, with two stylised ribbons pavé-set with similarly-cut diamonds, *diamonds approx. 3.15cts total, width 3.6cm*

£1,000 - 1,500 €1,400 - 2,100



35



36



37



38



40

39



41



44



43



45



42



46



48

47

49 ≈

A RUBY AND DIAMOND THREE-STONE RING

The oval-cut ruby mounted in a four-claw setting, between cushion-shaped diamond shoulders, to an 18 carat yellow gold band, *diamonds approx. 0.75ct total, maker's mark PHSN, London hallmark, European convention mark, ring size T½*

£800 - 1,200 €1,100 - 1,700

50

A SAPPHIRE AND DIAMOND-SET NECKLACE

The oval cabochon sapphire, collet-set within an octagonal surround of brilliant-cut diamonds, to a flattened curb-link chain, *diamonds approx. 1.25cts total, length 41.3cm*

£2,800 - 3,200 €3,900 - 4,400

51

A STAR SAPPHIRE RING

The oval cabochon star sapphire collet-set to a twisted band, *ring size H*

£5,000 - 6,000 €6,900 - 8,300

52

No lot

53 ≈

A SAPPHIRE AND DIAMOND BROOCH AND A RUBY, SAPPHIRE AND DIAMOND DRESS RING

1st: Modelled as a leaf and set with marquise-cut sapphires, brilliant and single-cut diamonds, 2nd: Of bombé design, set with circular-cut ruby and sapphire flowerheads and accented by brilliant-cut diamonds, *diamonds approx. 0.50ct total, brooch length 2.4cm, ring size L½ (2)*

£1,200 - 1,500 €1,700 - 2,100

54

A DIAMOND THREE-STONE RING, 1983

The brilliant-cut diamonds mounted in claw settings to an 18 carat gold band, *principle diamond approx. 0.80ct, remaining diamonds approx. 1.15cts total, maker's mark FRS Ltd, London hallmark, ring size N*

£1,200 - 1,800 €1,700 - 2,500

55

No lot

56

A SINGLE-STRAND PEARL NECKLACE

The graduated line of 2.3mm-6.1mm pearls, to a pierced millegrain clasp set with rose and old brilliant-cut diamonds, *French assay mark, length 42.9cm*

£2,000 - 3,000 €2,800 - 4,200

Accompanied by a report from AnchorCert stating that an extensive sample of pearls was tested and found to be natural, saltwater. Report number 20020940, dated 5th December 2014.

57

A SAPPHIRE AND DIAMOND BROOCH

The stylised flower brooch set throughout with cushion-shaped sapphires, highlighted by cushion-shaped and rose-cut diamonds, *cushion-shaped diamonds approx. 1.40cts total, length 6.0cm*

£3,000 - 4,000 €4,200 - 5,500

58

A BIRD BROOCH

Realistically modelled as a tri-coloured bird of prey with circular cabochon garnet eyes, grasping a half imitation pearl in its beak and mounted on a bar brooch, *pin signed Cartier Paris, French assay mark, width 7.6cm*

£1,500 - 2,000 €2,100 - 2,800

59 ≈

A RUBY AND DIAMOND DRESS RING

The large bi-coloured oval plaque, collet-set with an oval-cut ruby, within tiered surrounds alternating with circular-cut rubies and brilliant-cut diamonds, *diamonds approx. 1.80cts total, ring size U½*

£2,200 - 2,800 €3,000 - 3,900

60

A SAPPHIRE AND DIAMOND RING

The old brilliant-cut diamond mounted in a six-claw setting, between cushion-shaped sapphires, *diamond approx. 1.00ct, ring size O*

£2,500 - 3,000 €3,500 - 4,200

61 ≈

A RUBY, SAPPHIRE AND DIAMOND BRACELET, BY RONALD ABRAM

The curb-link chain with spherical spacers highlighted by brilliant-cut diamonds, circular cabochon rubies and sapphires and an additional heart-shaped charm, pavé-set with similarly-cut diamonds, to a lobster clasp, *diamonds approx. 2.50cts total, length 17.0cm, maker's case and guarantee*

£2,000 - 3,000 €2,800 - 4,200

62

A 'PARENTESI' BANGLE, BY BULGARI

The sprung bangle composed of interlocking fancy-links, *signed Bulgari, inner diameter 5.2cm*

£2,600 - 2,800 €3,600 - 3,900





64

64

63

65

66

63

A PASTE CHOKER NECKLACE. 18TH-19TH CENTURY COMPOSITE

Set to the front with cushion-shaped paste, suspending a similarly-set articulated bow surmount and terminating in a trio of pendants, set with cushion and pear-shaped paste, all in closed back settings, mounted in silver, to a ribbon band, *French assay mark, French export mark, lengths: pendant 8.0cm, necklace front 30.5cm*

£800 - 1,200

€1,100 - 1,700

64

A DIAMOND CRESCENT BROOCH AND A TOPAZ AND DIAMOND CLUSTER RING, EARLY 19TH CENTURY

1st: Set with fifteen rose-cut diamonds and a later brooch fitting, 2nd: The oval-cut pink topaz within a surround of single-cut diamonds, all mounted in closed back settings, *1st with later brooch fitting, brooch 2.5cm, ring size L½ (leading edge) (2)*

£1,500 - 2,000

€2,100 - 2,800

65

A PAIR OF 19TH CENTURY DIAMOND CHANDELIER EARRINGS

Each of cascading foliate design, set with cushion-shaped diamonds and suspended from a circular cluster surmount, some in closed-back settings, *diamonds approx. 5.80cts total, composite, length 8.5cm*

£3,500 - 4,500

€4,900 - 6,200

66

A DIAMOND HINGED BANGLE

Set to the front with a slightly graduated line of cushion-shaped diamonds, each in a box-setting, *diamonds approx. 5.15cts total, inner diameter 5.6cm*

£2,000 - 3,000

€2,800 - 4,200



67

67

A TOPAZ DEMI-PARURE, PORTUGUESE, CIRCA 1780

Comprising a brooch/pendant and a pair of earrings, each of girandole design, set throughout with vari-cut topaz in foiled closed back settings and mounted in silver gilt, *later brooch and earring fittings*, lengths: brooch/pendant 6.9cm, earring 4.1cm (2)

£4,000 - 6,000 €5,500 - 8,300

68

A PAIR OF 19TH CENTURY CHRYSOBERYL CHANDELIER EARRINGS, PROBABLY PORTUGUESE

Each featuring a crossed ribbon and cascading floral motifs, terminating in a crescent pendant, set throughout with vari-cut chrysoberyls, *composite, later hook fittings*, earring 6.8cm

£2,000 - 4,000 €2,800 - 5,500



68

69

A PAIR OF 19TH CENTURY DIAMOND PENDENT EARRINGS

Each of chandelier design, the rose-cut diamond surmount, to a pierced elongated plaque of cushion-shaped diamonds, suspending a fringe of similarly-shaped diamonds, *cushion-shaped diamonds approx. 7.40cts total, composite, length 5.6cm*

£3,000 - 4,000 €4,200 - 5,500



69

70

A SPINEL AND DIAMOND BRACELET

The tapering openwork plaque set with old brilliant-cut diamonds and centrally-set with a circular cabochon red spinel, to a sprung bracelet, *diamonds approx. 1.80cts total, length approx. 15.0cm*

£1,200 - 1,500 €1,700 - 2,100



70

71

A FIVE-STONE DIAMOND RING

The central cushion-shaped diamond, mounted in an eight-claw setting, with similarly-shaped and old brilliant-cut diamonds to the cardinal points, *diamonds approx. 2.10cts total, ring size O½*

£800 - 1,200 €1,100 - 1,700



71

72

A PAIR OF DIAMOND EARSTUDS

Each with an old brilliant-cut diamond, mounted in a four-claw setting, *diamonds approx. 1.20cts total*

£800 - 1,200 €1,100 - 1,700

73 Y

A CORAL, WHITE TOPAZ AND DIAMOND PENDANT NECKLACE

The octagonal openwork pendant centrally-set with an oval cabochon coral *corallium rubrum*, to a trace-link chain highlighted by further coral *corallium rubrum* beads and set throughout with brilliant, tapered baguette, single and marquise-cut white topaz and diamonds, *lengths: pendant 5.6cm, necklace 79.5cm*

£1,500 - 2,000 €2,100 - 2,800

This lot will be subject to USA Fish and Wildlife regulations if it is to be imported into the USA.

74

A PAIR OF DIAMOND PENDENT EARRINGS

Each row of collet-set brilliant-cut diamonds between cable-link spacers, *diamonds approx. 2.55cts total, length 9.3cm*

£2,400 - 2,800 €3,300 - 3,900

75

A CULTURED PEARL AND DIAMOND NECKLACE

The drop-shaped 17.0mm x 12.3mm grey cultured pearl, suspended from an articulated row of brilliant-cut diamonds, to a trio of similarly-cut diamonds and a triangular baton-link chain, *diamonds approx. 0.70ct total, signed Baskania, length 46.5cm*

£1,500 - 2,000 €2,100 - 2,800

76 ≈

A RUBY AND DIAMOND PENDANT NECKLACE

Centrally-set with a cushion-shaped ruby, mounted in a five double-claw setting, within a heart-shaped surround of pavé-set brilliant-cut diamonds, to a flattened curb-link chain, *diamonds approx. 0.75ct total, London import mark, length adjustable, longest length 46.7cm*

£2,000 - 3,000 €2,800 - 4,200

77

A DIAMOND HALF-HOOP RING

Channel-set with square step-cut diamonds, *diamonds approx. 2.05cts total, ring size L*

£1,200 - 1,500 €1,700 - 2,100

78

A DIAMOND SINGLE-STONE RING

The pear-shaped diamond, weighing 1.19 carats, mounted in a three-claw setting, between tapered baguette-cut diamond shoulders, *ring size N*

£3,000 - 3,500 €4,200 - 4,900

Accompanied by a report from AnchorCert stating that the diamond is E colour, VS1 clarity. Report number 20022239, dated 5th March 2015.

79

A CULTURED PEARL AND DIAMOND BRACELET

The five strands of 6.9mm-7.3mm cultured pearls, with collet-set brilliant-cut diamond bar accents, to a sizeable pierced clasp set with similarly, single, step, marquise-cut and pear-shaped diamonds, *diamonds approx. 4.45cts total, one diamond deficient, length 22.2cm*

£3,000 - 4,000 €4,200 - 5,500

80

A PAIR OF CULTURED PEARL AND DIAMOND EARRINGS

Each 16.4mm x 11.6mm and 16.0mm x 11.6mm drop-shaped grey cultured pearl, suspended from a series of brilliant-cut diamonds, mounted in four-claw settings and linked by knife-edge bars, *diamonds approx. 1.40cts total, maker's mark RK, length 6.4cm*

£1,500 - 2,000 €2,100 - 2,800

81 ≈

A RUBY AND DIAMOND RING

The oval cabochon ruby, weighing 7.29 carats, centrally-set in a bombé pierced mount, highlighted by brilliant, single and rose-cut diamonds, *brilliant and single-cut diamonds approx. 0.55ct total, ring size O*

£2,500 - 3,000 €3,500 - 4,200

Accompanied by a report from The Gem & Pearl Laboratory stating that the ruby is natural, with no evidence of heat treatment. Report number 10575 dated 10th December 2014.

82

A PAIR OF CULTURED PEARL AND DIAMOND EARRINGS

Each 15.5mm-15.9mm grey cultured pearl to a brilliant-cut diamond surmount, *diamonds approx. 0.95ct total, length 2.0cm*

£1,500 - 2,500 €2,100 - 3,500

83 ≈

A RUBY AND DIAMOND RING, 1975

The oval-cut ruby claw-mounted between two circular-cut rubies, within a surround of single-cut diamonds, *diamonds approx. 0.50ct total, London hallmarks, ring size S*

£800 - 1,200 €1,100 - 1,700

84

A PINK TOURMALINE AND DIAMOND RING

The pear-shaped pink tourmaline, in a three-claw setting, within a surround of brilliant-cut diamonds, between bifurcated shoulders, set with similarly-cut diamonds, to an 18 carat white gold band, *diamonds approx. 0.70ct total, maker's mark, London hallmark, ring size K1/2*

£1,000 - 1,500 €1,400 - 2,100

85 ≈

A RUBY AND DIAMOND BRACELET

The series of openwork plaques, pavé-set with brilliant-cut diamonds and centrally highlighted by collet-set oval-cut rubies, *diamonds approx. 1.70cts total, length 18.0cm*

£4,500 - 5,000 €6,200 - 6,900

86

A PAIR OF PINK SAPPHIRE AND DIAMOND PENDENT EARRINGS

Each articulated line of pear-shaped pink sapphires within surrounds of brilliant-cut diamonds, to an oval-cut pink sapphire and similarly-cut diamond surmount, *diamonds approx. 2.25cts total, Russian assay marks, length 5.4cm*

£1,800 - 2,500 €2,500 - 3,500



72

78

76

83

73

74

75

77

79

80

85

82

84

81

86

87 ≈

AN EMERALD AND DIAMOND PENDANT

The heart-shaped emerald within a surround of brilliant and marquise-cut diamonds, the openwork frame to the reverse highlighted by a heart-shaped ruby, mounted in 18 carat yellow gold, *diamonds approx. 4.20cts total, maker's mark SR, London hallmark, length 4.0cm*

£6,000 - 8,000 €8,300 - 11,000

88

A MULTI-STRAND CULTURED PEARL AND DIAMOND NECKLACE

The rows of 2.2mm-2.4mm cultured pearls, suspended from tiered brilliant-cut diamond bars, to a back chain of polished graduating plaques, *diamonds approx. 1.55cts total, length 41.2cm*

£1,500 - 2,000 €2,100 - 2,800

89

AN EMERALD AND DIAMOND CLUSTER RING

The cut-cornered step-cut emerald within a surround of brilliant-cut diamonds, mounted in 18 carat yellow gold, *diamonds approx. 2.80cts total, maker's mark EF, partial UK hallmark, ring size O*

£6,000 - 8,000 €8,300 - 11,000

90

A PAIR OF EMERALD AND DIAMOND EARRINGS

Each oval-cut emerald within a surround of brilliant-cut diamonds, *diamonds approx. 2.40cts total, length 1.7cm*

£4,000 - 6,000 €5,500 - 8,300

91

A 'CLAW' PENDANT NECKLACE AND BRACELET SUITE, BY POMELLATO

1st: The claw pendant to a box-link chain, 2nd: The bi-coloured claws to a lobster clasp between bar and hoop-link spacers, *signed Pomellato, lengths: necklace 84.6cm, bracelet 17.6cm*

£1,200 - 1,500 €1,700 - 2,100

92

A PAIR OF HOOP EARRINGS, BY YVES SAINT LAURENT, CIRCA 1985

Each realistically styled as interlocking folds of ribbons, *signed Yves Saint Laurent, maker's mark, numbered, length 3.3cm, maker's case*

£800 - 1,200 €1,100 - 1,700

93

A PAIR OF EMERALD AND DIAMOND EARRINGS, BY PUIG DORIA

Each spray composed of a pear-shaped emerald, in a five-claw setting, within a surround of brilliant-cut diamonds, *diamonds approx. 4.40cts total, signed Puig Doria, length 3.6cm*

£2,000 - 3,000 €2,800 - 4,200

94

A MALACHITE WATCH PENDANT NECKLACE, BY LONGINES

The fancy-link longchain suspending a watch with a malachite dial highlighted by brilliant-cut diamonds and two malachite spacers, terminating in two malachite beads, *dial and movement signed Longines, length 96.0cm*

£2,000 - 3,000 €2,800 - 4,200

95

AN EMERALD AND DIAMOND DRESS RING

The radiating cluster of marquise, step and circular-cut emeralds, highlighted by brilliant and marquise-cut diamonds, *diamonds approx. 1.75cts total, ring size J½ (sizing beads)*

£1,200 - 1,500 €1,700 - 2,100

96

A GOLD CUFF, BY TIFFANY & CO.

Composed of an openwork frame of curvilinear design in 18 carat yellow gold, *signed Tiffany & Co., UK import mark, inner diameter 5.7cm*

£1,600 - 2,000 €2,200 - 2,800

97

AN EMERALD AND DIAMOND RING

The oval cabochon emerald mounted in a collet-setting, within a surround of old brilliant-cut and cushion-shaped diamonds, *diamonds approx. 0.95ct total, ring size J*

£2,000 - 3,000 €2,800 - 4,200

98

AN EMERALD AND DIAMOND CLUSTER RING

The cushion-shaped emerald, weighing 3.02 carats, within a similarly-cut diamond surround, between trifurcated shoulders, *diamonds approx. 0.50ct total, ring size K*

£4,000 - 6,000 €5,500 - 8,300

Accompanied by a report from AnchorCert stating that the emerald is natural, of Colombian origin with evidence of moderate clarity enhancement. Report number 20021142, dated 11th December 2014.



88

87

89

90

91

93

95

92

98

94

97

96

91



99

99

A DIAMOND FRINGE NECKLACE, CIRCA 1890

Composed of a graduated series of old brilliant-cut diamonds, suspending a fringe of foliate motifs, set with similarly, rose-cut and cushion-shaped diamonds, terminating in old brilliant-cut diamond highlights, to a later curb-link chain, *old brilliant-cut and cushion-shaped diamonds approx. 13.50cts total, converted from a tiara, length 45.4cm (illustrated above)*

£6,000 - 8,000 €8,300 - 11,000

100

A DIAMOND-SET BROOCH/PENDANT AND EARRINGS SUITE

1st: The openwork pendant composed of scroll and leaf motifs, pavé-set with rose-cut diamonds and highlighted by 4.7mm - 6.1mm pearls, with a collet-set old brilliant-cut diamond to a centralised knife-edge bar, millegrain detail throughout, later brooch fitting and detachable strand of seed pearls, 2nd: Each designed as an openwork spray of scroll and leaf motifs, pavé-set with rose-cut diamonds and millegrain detail throughout, *one diamond deficient, principle diamond approx. 0.85ct total, seed pearls untested, lengths: pendant 5.8cm, seed pearl strand 35.7cm, earring 3.8cm, cased by Aldredo Fierro (2)*

£1,300 - 1,800 €1,800 - 2,500

Accompanied by a report from GCS stating that all but one of the pearls to the brooch/pendant are natural saltwater. Report number 5775-1462, dated 4th March 2015.

101

A DIAMOND JARDINIÈRE BROOCH, BY HENRI VEVEER, EARLY 20TH CENTURY

Composed of an openwork basket and bouquet set with rose-cut diamonds, *signed Vever, French assay mark, length 3.1cm*

£1,200 - 1,500 €1,700 - 2,100

For similar examples, see Purcell, Katherine and Vever, Henri, "French Jewellery of the Nineteenth Century", Thames & Hudson, 2001, p.1053.

102 Y ≈

A MOTHER-OF-PEARL AND DIAMOND SWAN BROOCH

Set throughout with rose-cut diamonds, the body of mother-of-pearl, with a circular cabochon ruby eye, *one diamond deficient, numbered, width 3.7cm*

£1,000 - 1,500 €1,400 - 2,100

This lot will be subject to USA Fish and Wildlife regulations if it is to be imported into the USA.

103

AN EMERALD AND DIAMOND RING

The oval cabochon emerald mounted in a closed-back setting, within a surround of single and old brilliant-cut diamonds, *ring size N*

£2,000 - 3,000 €2,800 - 4,200

104

A DIAMOND SET WATCH/BROOCH

The spherical watch with a white enamel dial and Arabic numerals in a surround of rose-cut and cushion-shaped diamonds, suspended from a twin-chain set with similarly-cut diamonds and an openwork bar-brooch set with five old brilliant-cut diamonds, *diamonds approx. 3.15cts total, length 5.0cm*

£1,200 - 1,800 €1,700 - 2,500

105

A DIAMOND CLUSTER BROOCH/PENDANT/CLASP, CIRCA 1880

The openwork flowerhead, centrally set with a cluster of cushion-shaped diamonds, the petals set with similarly and rose-cut diamonds, *cushion-shaped diamonds approx. 3.70cts total, pendant and pin fitting detachable, length 5.3cm*

£2,000 - 2,500 €2,800 - 3,500

106

AN EMERALD AND DIAMOND CLUSTER RING

The collet-set step-cut emerald, within a surround of cushion-shaped diamonds, *diamonds approx. 0.65ct total, French import marks, ring size K½ (sizing band)*

£6,000 - 8,000 €8,300 - 11,000

107

A DIAMOND BROOCH/PENDANT, CIRCA 1910

Modelled as a ribbon bow tied with floral sprays, pavé-set with rose and single-cut diamonds and collet-set with brilliant-cut diamond highlights, millegrain detail throughout, *old brilliant and single-cut diamonds approx. 2.20cts total, length 8.5cm*

£1,500 - 2,000 €2,100 - 2,800

108

A DIAMOND BROOCH

The cushion-shaped and old brilliant-cut diamond cartouche of scrolling foliate design, *diamonds approx. 2.15cts total, width 4.3cm*

£1,000 - 2,000 €1,400 - 2,800

109

AN EMERALD AND DIAMOND RING, EARLY 20TH CENTURY

The circular cabochon emerald set beside an old brilliant-cut diamond, surmounted by an openwork chevron highlighted by two similarly-cut diamonds and pavé-set with single-cut diamonds, millegrain detail throughout, *diamonds approx. 1.00ct total, ring size P*

£1,000 - 1,500 €1,400 - 2,100

110 ≈

A GEM-SET AGATE BROOCH

The oval banded agate within a surround of rose-cut diamonds, highlighted by floral motifs set with calibré-cut emeralds, rubies and sapphires, rose-cut diamonds and a single half-pearl, *length 4.5cm*

£1,600 - 2,000 €2,200 - 2,800

111

A PEARL AND DIAMOND CHOKER

Composed of eight openwork plaques, set with rose-cut diamonds and alternately highlighted by a 3.4mm half cultured pearl or a brilliant-cut diamond, between seven strands of 3.8mm-4.2mm cultured pearls, *brilliant-cut diamonds approx. 0.40ct total, Portuguese assay marks, length 31.2cm, cased by Ferreira Marques, Porto & Lisbon*

£4,000 - 6,000 €5,500 - 8,300



100



101



102



106



100



103



107



105



104



108



109



110

111



112

A PAIR OF CITRINE AND DIAMOND PENDENT EARRINGS

Each marquise-cut citrine, mounted in a four-claw setting, within a surround of brilliant-cut diamonds, to a floral surmount with similarly-cut diamonds, mounted in 18 carat white gold, *diamonds approx. 0.80ct total, maker's mark, London hallmark, length 4.6cm*

£1,000 - 1,500 €1,400 - 2,100

113 ≈

A RUBY AND DIAMOND PLAQUE RING

The three rows of old brilliant-cut diamonds within a border of calibré-cut rubies, *diamonds approx. 1.50cts total, Austrian assay mark, ring size M*

£800 - 1,200 €1,100 - 1,700

114

A SINGLE-STRAND CULTURED PEARL NECKLACE

Composed of slightly graduating, 10.4mm-11.3mm cultured pearls, to an 18 carat white gold spherical clasp, pavé-set with single-cut diamonds, *diamonds approx. 1.40cts total, maker's mark, London hallmark, length 44.5cm*

£1,200 - 1,500 €1,700 - 2,100

115

A DIAMOND DOUBLE-CLIP BROOCH

The double clip brooch of scrolling openwork form set throughout with single and brilliant-cut diamonds, *diamonds approx. 2.50cts total, length 5.0cm*

£1,200 - 1,500 €1,700 - 2,100

116

A PAIR OF DIAMOND EARSTUDS

Each with a brilliant-cut diamond, in a four-claw setting, *diamonds approx. 1.00ct total*

£700 - 900 €970 - 1,200

117 ≈

A RUBY AND DIAMOND BRACELET

The openwork bracelet composed of a series of quatrefoil plaques of rose-cut diamonds and calibré-cut rubies each with an old brilliant-cut diamond at the centre, *old brilliant-cut diamonds approx. 2.00cts total, length 16.3cm*

£3,000 - 4,000 €4,200 - 5,500

118

A YELLOW SAPPHIRE AND DIAMOND CLUSTER RING

The oval-cut yellow sapphire, in a four-claw setting, between baguette-cut diamond shoulders, within a surround of brilliant-cut diamonds, mounted in 18 carat white gold, *diamonds approx. 0.70ct total, London hallmark, ring size M½*

£1,000 - 1,500 €1,400 - 2,100

119

A PAIR OF DIAMOND CLIP BROOCHES, CIRCA 1950

Each stylised bow set throughout with brilliant and baguette-cut diamonds, *diamonds approx. 5.90cts total, length 5.8cm*

£4,000 - 6,000 €5,500 - 8,300

120

A CITRINE AND DIAMOND RING

The oval-cut citrine in a six double-claw setting between tiered baguette-cut diamond shoulders, *ring size G (leading edge)*

£700 - 900 €970 - 1,200

121

A WRISTWATCH, BY THEO FENNEL

The rectangular engine-turned dial with Arabic numerals mounted in an 18 carat white gold case and bracelet, with cabochon sapphire highlights to the lugs, *dial and movement signed Theo Fennell, Swiss assay marks, European convention marks, inner diameter approx. 5.5cm*

£700 - 1,000 €970 - 1,400

122

A PAIR OF DIAMOND EARSTUDS

Each brilliant-cut diamond mounted in a four-claw setting, *diamonds approx. 0.95ct total*

£700 - 900 €970 - 1,200

123

A BI-COLOURED BANGLE, BY CARTIER

Designed as a rigid hoop of twisted bi-coloured cable and highlighted by two crossed bands, *signed Cartier, numbered, inner diameter 6.2cm*

£1,500 - 2,000 €2,100 - 2,800

124

AN EMERALD AND DIAMOND NECKLACE/BROOCH, RING AND EARRING SUITE

The pierced openwork plaque, detachable as a brooch, set with oval cabochon emeralds within a surround of rose-cut diamonds to a necklace of similar emerald and diamond clusters, accompanied by a matching ring and earrings, *lengths: brooch 6.5cm, necklace 44.5cm, earring 3.7cm, ring size P, fitted case (3) (illustrated on the inside back cover)*

£4,000 - 6,000 €5,500 - 8,300



112



114



113



116



115



117



118



120



119



121



122



123

125 Y ≈

A VANITY CASE

Of Persian design and decorated with polychrome enamel scenes of wild flora and fauna, opening to reveal a mirrored lid and four compartments, with a mother-of-pearl thumbpiece set with a circular-cut ruby, *numbered, length 15.6cm* (illustrated on the inside front cover)

£2,500 - 3,000 €3,500 - 4,200

This lot will be subject to USA Fish and Wildlife regulations if it is to be imported into the USA.

126 ≈

A SQUIRREL BROOCH, BY HERMÈS

Realistically modelled as a squirrel with a circular-cut ruby eye, perched on a branch and clutching a nut, *signed Hermès Paris, maker's marks, numbered, French assay marks, length 3.6cm*

£800 - 1,200 €1,100 - 1,700

127 ≈

A GEM-SET NECKLACE AND BRACELET SUITE, CIRCA 1975

1st: The tubular foxtail-link necklace, featuring a pair of opposing lions' heads, set with brilliant-cut diamonds and circular-cut sapphire eyes to a centralised disc set with similarly-cut diamonds and a cabochon sapphire, 2nd: The bracelet of similar design, set with single-cut diamonds and circular-cut ruby eyes, to a centralised oval-cut sapphire mounted in a collet-setting, *diamonds approx. 0.35ct total, lengths: necklace 44.3cm, bracelet 19.2cm (2)*

£2,000 - 3,000 €2,800 - 4,200

128

A GOLD AND DIAMOND RING

The brilliant-cut diamond mounted in a six-claw setting, to an 18 carat yellow gold band set with similarly-cut diamonds, *principal diamond approx. 1.25cts, UK hallmark, ring size L½*

£1,500 - 2,000 €2,100 - 2,800

129

A CULTURED PEARL AND DIAMOND TASSEL BROOCH, BY CHAUMET

The 3.5mm - 5.8mm cultured pearl tassel to a pavé-set brilliant-cut diamond surmount, suspended from a similarly-cut diamond bar brooch with six interchangeable ribbon centres, *diamonds approx. 3.60cts total, signed Chaumet Paris, maker's mark JC, French assay marks, length 12.0cm*

£4,500 - 6,500 €6,200 - 9,000

130

A DIAMOND SINGLE-STONE RING

The brilliant-cut diamond mounted in a six-claw setting, *diamond approx. 0.80ct, ring size R*

£1,000 - 1,500 €1,400 - 2,100

131

A DOUBLE-STRAND CULTURED PEARL NECKLACE WITH AN EMERALD AND DIAMOND CLASP

The rows of 7.4mm-7.8mm cultured pearls to an oval clasp set with an oval cabochon emerald within a pavé-set brilliant-cut diamond surround, *diamonds approx. 0.65ct total, length of shortest strand 76.2cm*

£1,500 - 2,000 €2,100 - 2,800

132

A PAIR OF BLUE TOPAZ AND ENAMEL EARCLIPS, BY DE VROOMEN

Each triangular 18 carat yellow gold clip of green guilloché enamel, centrally collet-set with an oval-cut blue topaz, *signed de Vroomen, London hallmarks, European convention marks, length 3.0cm*

£1,000 - 1,500 €1,400 - 2,100

133

A NATURAL PEARL AND DIAMOND RING

The 7.58mm-7.94mm natural pearl in a tapering mount set with cushion-shaped diamonds, *diamonds approx. 0.30ct total, French import mark, ring size G (leading edge)*

£1,000 - 1,500 €1,400 - 2,100

Accompanied by a report from AnchorCert stating that the pearl is natural, saltwater. Report number 20021656, dated 29th January 2015

134

A BRACELET, BY WILM

Composed of a sinuous series of textured octagonal links, *maker's mark, length 21.5*

£1,000 - 1,500 €1,400 - 2,100

135

AN AQUAMARINE DRESS RING

The step-cut aquamarine, in a four-claw setting, to a rope-twist and overlapping medallion gallery, *ring size N½*

£2,000 - 2,500 €2,800 - 3,500

136

AN EMERALD AND DIAMOND-SET SERPENT BRACELET

Designed as a stylised swirling snake, the head centrally-set with a cut-cornered step-cut emerald, within a surround of rose-cut diamonds, the eyes set with circular-cut emeralds, *marked Mekan, length adjustable*

£1,000 - 2,000 €1,400 - 2,800



126

127



129

128

130



131



133



132



127

136

135

134



137

A DIAMOND SPRAY BROOCH

The openwork foliate scrolls pavé-set with brilliant-cut diamonds, and accented by similarly-cut diamonds on polished rays, *diamonds approx. 3.70cts total, length 4.8cm*

£1,000 - 1,500 €1,400 - 2,100

138

AN AQUAMARINE AND DIAMOND PENDANT NECKLACE

The oval-cut aquamarine, in a twelve-claw setting, to a cushion-shaped diamond surmount, suspended from a 9 carat white gold box-link chain, *chain with UK import mark, lengths: pendant 4.1cm, chain 49.7cm*

£1,200 - 1,500 €1,700 - 2,100

139 ≈

A TURQUOISE AND DIAMOND BROOCH, RING AND GEM-SET EARCLIPS

1st: The heart-shaped openwork brooch set with marquise-shaped cabochon turquoise and brilliant-cut diamonds, centrally pavé-set with single-cut diamonds, 2nd: The oval cabochon turquoise, within a tiered surround of brilliant-cut diamonds, 3rd: The stylised floral earclips set with marquise-shaped cabochon turquoise, brilliant-cut diamonds, circular-cut rubies and sapphires, *diamonds approx. 5.60cts total, lengths: brooch 2.7cm, ring size L, earclip 2.0cm (3)*

£1,800 - 2,200 €2,500 - 3,000

140

A PAIR OF AQUAMARINE AND DIAMOND PENDENT EARRINGS

Each of openwork design, centrally-set with a pear-shaped aquamarine, in a three claw-setting, within a surround of pavé-set brilliant-cut diamonds, surmounted by a similarly-cut aquamarine, *diamonds approx. 0.40ct total, London hallmark, length 2.4cm*

£1,500 - 2,000 €2,100 - 2,800

141

AN AQUAMARINE AND DIAMOND CLUSTER RING

The cut-cornered step-cut aquamarine mounted in a double four-claw setting, within a surround of brilliant-cut diamonds, *diamonds approx. 2.20cts total, indistinct maker's mark, ring size H½*

£2,000 - 3,000 €2,800 - 4,200

142

A TURQUOISE AND DIAMOND CLUSTER RING, BY PUIG DORIA

The oval cabochon turquoise, in an abstract surround of brilliant-cut diamonds, *diamonds approx. 1.25cts total, signed Puig Doria, ring size N½ (sizing band)*

£1,000 - 1,500 €1,400 - 2,100

143

AN AQUAMARINE AND DIAMOND CLUSTER RING, 1971

The oval-cut aquamarine, within a brilliant-cut diamond surround, to an 18 carat white gold band, *diamonds approx. 1.20cts total, London hallmark, ring size P½*

£1,000 - 1,500 €1,400 - 2,100

144

A DIAMOND SET FLOWER BROOCH

Designed as an openwork flower and set throughout with brilliant and baguette-cut diamonds, *diamonds approx. 6.50cts total, length 4.1cm*

£2,000 - 2,500 €2,800 - 3,500

145

A PAIR OF DIAMOND EARSTUDS

Each brilliant-cut diamond, in a four-claw 18 carat white gold setting, *diamonds approx. 0.90ct total, partial UK hallmark, European convention mark*

£700 - 900 €970 - 1,200

146

A PAIR OF TURQUOISE AND DIAMOND CLUSTER EARRINGS, BY PUIG DORIA

Each oval cabochon turquoise, in an abstract surround of brilliant-cut diamonds, *diamonds approx. 3.15cts total, signed Puig Doria, length 2.9cm*

£2,000 - 2,500 €2,800 - 3,500

147

A DIAMOND LINE BRACELET

Composed of two articulating rows of brilliant-cut diamonds, *diamonds approx. 7.20cts total, length 18.1cm*

£2,500 - 3,000 €3,500 - 4,200

148

A DIAMOND SET WRISTWATCH, BY KUTCHINSKY

The woven bracelet highlighted with tapering baguette-cut diamonds which open to reveal the square dial with baton hour markers, *diamonds approx. 3.40cts total, dial signed Kutchinsky, length 17.8cm*

£2,000 - 2,500 €2,800 - 3,500

149

AN AQUAMARINE AND DIAMOND BROOCH

Of navette form, centrally-set with an oval-cut aquamarine, mounted in a six double-claw setting, between openwork shoulders set with marquise, old brilliant and triangular-cut diamonds, mounted in collet-settings, *diamonds approx. 3.80cts total, length 6.5cm*

£2,000 - 3,000 €2,800 - 4,200



137

139

138

140

139

141

143

142

144

146

145

148

147

149

150

AN EMERALD AND SEED PEARL BRACELET AND EARRINGS

The bracelet composed of a series of fine filigree flowerheads, each set with a centralised oval-cut emerald within a surround of seed pearls, accompanied by a matching pair of earrings, *lengths: bracelet 15.6cm, earring 3.5cm, both cased by S.J. Phillips (2)*

£700 - 900 €970 - 1,200

151

AN ENAMEL MEMORIAL RING FOR THE DUKE OF WELLINGTON, SECOND HALF OF THE 19TH CENTURY

The glazed medallion depicting the bust of Wellington, in profile to the right and inscribed *Duke of Wellington*, within a surround of green enamel laurel leaves, the black enamel shoulders highlighted by ducal coronets, the reverse engraved *Waterloo*, the inside band inscribed *Born 1st May 1769. Died 14th Sept. 1852, enamel loss, ring size N*

£2,000 - 3,000 €2,800 - 4,200

152

A CARVED INTAGLIO, BY NATHANIEL MARCHANT (1739-1816)

The carved cornelian plaque depicting a classical female bust, in profile to the left and mounted in a collet setting, accompanied by corresponding plaster impression, *signed Marchant, length 3.8cm*

£800 - 1,200 €1,100 - 1,700

153

A PAIR OF CITRINE EARRINGS

The floral repoussé plaque with a buff-top step-cut citrine at the centre suspended beneath a similar plaque and surmount, *length 7.1cm*

£800 - 1,200 €1,100 - 1,700

154

A NECKLACE

Composed of a series of wirework spheres to a trace-link chain, alternating with reeded spacers, *partial European convention mark, length 72.0cm*

£1,000 - 1,500 €1,400 - 2,100

155

A DIAMOND THREE-STONE RING

The cushion-shaped diamond, weighing 1.10 carats, of greenish yellow tint, between two old brilliant-cut diamonds with rose-cut diamond highlights, *old brilliant-cut diamonds approx 0.80ct total, ring size P*

£4,500 - 5,000 €6,200 - 6,900

Accompanied by a report from SSEF stating that the diamond is natural, fancy greenish yellow. Report number 76299, dated 29th September 2014.

156

A DIAMOND CLUSTER RING

The old brilliant-cut diamond within a surround of similarly and brilliant-cut diamonds, *principal diamond approx. 1.70cts, remaining diamonds approx. 1.10cts total, ring size N*

£3,500 - 4,000 €4,900 - 5,500

157

A PAIR OF DIAMOND PENDENT EARRINGS, PORTUGUESE, 18TH CENTURY

The graduated series of openwork scrolling, bow and quatrefoil plaques, decorated with table-cut diamonds, closed-back settings throughout, *two diamonds deficient, later earring fittings, length 7.2cm*

£4,000 - 6,000 €5,500 - 8,300

For a similar example see "Five Centuries of Jewellery", National Museum of Art, Lisbon, London, 1995, ill.no.79

158

AN AMETHYST NECKLACE, CIRCA 1880

The circular pierced pendant of applied beadwork and ropetwist design with a cushion-shaped amethyst to the centre, suspending two further pear-shaped amethysts to a foxtail-link chain, *length 49.0cm*

£1,000 - 1,500 €1,400 - 2,100



150

150



152



151



153



154



157



155



156



158

159

A DIAMOND DOUBLE-CLIP BROOCH

Each openwork clip set with trilliant, baguette, marquise and brilliant-cut diamonds, *diamonds approx. 6.80cts total, length 6.0cm*

£1,800 - 2,200 €2,500 - 3,000

160

A DIAMOND RING

Centrally collet-set with an old brilliant-cut diamond, within a square plaque with single-cut diamond accents, between tiered shoulders of similarly and rose-cut diamonds, *principal diamond approx. 1.45cts, ring size K*

£1,200 - 1,500 €1,700 - 2,100

161

A PAIR OF DIAMOND PENDENT EARRINGS

Each scrolling earring set with brilliant and baguette-cut diamonds and suspending three articulated cascades of similarly-cut diamonds, *diamonds approx. 7.30cts total, length 5.5cm*

£3,000 - 4,000 €4,200 - 5,500

162

AN EMERALD AND DIAMOND RING

The cut-cornered step-cut emerald in a four-claw setting between trios of princess-cut diamonds, *diamonds approx. 0.60ct total, ring size M½*

£1,800 - 2,200 €2,500 - 3,000

163

A ROCK CRYSTAL, EMERALD AND DIAMOND BROOCH

The frosted rock crystal plaque set with a shield-shaped emerald and two quintets of brilliant-cut diamonds within a border of similarly-cut diamonds, *diamonds approx. 2.20cts total, Moroccan assay marks, French import marks, length 5.5cm*

£1,000 - 1,500 €1,400 - 2,100

164

A DIAMOND DRESS RING, CIRCA 1935

The odeonesque ring of tiered curves set throughout with old brilliant, single and baguette-cut diamonds, *diamonds approx. 3.25cts total, ring size J*

£1,500 - 2,000 €2,100 - 2,800

165

AN EMERALD AND DIAMOND RING

The step-cut emerald, in a closed-back setting, between triangular-cut diamond shoulders, *diamonds approx. 0.65ct total, two diamonds deficient, ring size N*

£1,200 - 1,500 €1,700 - 2,100

166

A DIAMOND ETERNITY RING

Composed of a single row of brilliant-cut diamonds, *diamonds approx. 1.10cts total, ring size N*

£800 - 1,200 €1,100 - 1,700

167

AN EMERALD AND DIAMOND BRACELET, CIRCA 1930

Composed of a series of circular and baton-links set throughout with brilliant, baguette and single-cut diamonds with square-cut emerald highlights, *diamonds approx. 8.80cts total, length 18.2cm*

£4,000 - 6,000 €5,500 - 8,300

168

A DIAMOND DOUBLE-CLIP BROOCH, CIRCA 1935

Composed of stylised folds set with brilliant, old brilliant, single and baguette-cut diamonds, *diamonds approx. 7.50cts total, length 3.8cm*

£4,000 - 6,000 €5,500 - 8,300

169

A PAIR OF DIAMOND DRESS CLIPS

Each scrolling ribbon pavé-set with brilliant-cut diamonds, highlighted by similarly-cut diamonds in collet settings and a channel-set ribbon of baguette-cut diamonds, *diamonds approx. 1.15cts total, indistinct maker's mark, French assay marks, length 3.1cm*

£2,200 - 2,800 €3,000 - 3,900

170

AN EMERALD AND DIAMOND BANGLE

Composed of geometric openwork plaques, each centrally-set with a brilliant-cut diamond or square-cut emerald, in a four-claw setting, between marquise-cut diamonds and rectangular-shaped emerald shoulders, corners highlighted with brilliant-cut diamonds, sides embellished with a chased laurel band, to a concealed clasp, *diamonds approx. 5.50cts total, length 16.0cm*

£1,000 - 2,000 €1,400 - 2,800

171

A PAIR OF EMERALD AND DIAMOND CUFFLINKS

Each double-sided cufflink composed of a square geometric plaque set with square-cut emeralds and single-cut diamonds, *diamonds approx. 0.40ct total, length 1.1cm*

£800 - 1,200 €1,100 - 1,700

172

AN EMERALD, DIAMOND AND SEED PEARL BRACELET

The oval cabochon emerald mounted in a delicate pierced lattice set with rose-cut diamonds, to a seed pearl bracelet and similarly-cut diamond clasp, *length 16.8cm*

£6,000 - 8,000 €8,300 - 11,000

Accompanied by a report from GCS stating that the emerald is Colombian, with moderate clarity enhancement. Report number 5775-1367, dated 16th February 2015.

173 ≈

A DIAMOND COCKTAIL WATCH, CIRCA 1950

The circular dial with baton hour markers, within a brilliant-cut diamond bezel, between marquise-cut diamond lugs, to a brilliant-cut diamond line bracelet, *diamonds approx. 3.50cts total, dial signed Prefis, length 17.1cm*

£1,500 - 2,000 €2,100 - 2,800



159



163



160



161



164



162



165



166



167



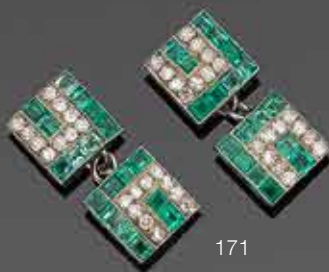
168



169



170



171



172

173



174

174

A PICASSO PENDANT NECKLACE, BY MADOURA

The circular pendant bearing an impression of a stylised face, to an undulating wirework collar, stamped 'Madoura empreinte originale de Picasso', pendant diameter 3.2cm

£2,500 - 3,500 €3,500 - 4,900

175

A SAPPHIRE AND DIAMOND PENDANT NECKLACE

The bluish-green fancy-cut diamond, weighing 46.7 carats, suspended from an old brilliant-cut diamond and a triangular cabochon moonstone to a trace-link chain, diamond approx. 0.75ct, lengths: pendant 4.4cm, necklace 46.0cm

£4,000 - 6,000 €5,500 - 8,300

176 †

A COLLECTION OF TEN UNMOUNTED FANCY COLOURED DIAMONDS

1st: Accompanied by a report from HRD stating that the pear-shaped diamond, weighing 1.06 carats, is Fancy Intense Brownish Orange colour. Report number 20020740902, dated 13th November 2002.

2nd: Accompanied by a report from HRD stating that the pear-shaped diamond, weighing 0.92 carat, is Fancy Intense Brownish Orange colour. Report number 20020740906, dated 13th November 2002.

3rd: Accompanied by a report from the GIA stating that the cut-cornered rectangular modified brilliant diamond, weighing 0.42 carat, is Fancy Intense Pink colour. Report number 12729280, dated 30th June 2003.

4th: Accompanied by a report from the GIA stating that the cut-cornered square modified brilliant diamond, weighing 0.42 carat, is Fancy Intense Purplish Pink colour. Report number 13341768, dated 15th April 2004.

5th: Accompanied by a report from the GIA stating that the emerald-cut diamond, weighing 0.39 carat, is Fancy Deep Pink colour. Report number 13275811, dated 16th March 2004.

6th: Accompanied by a report from the GIA stating that the cut-cornered square mixed cut diamond, weighing 0.42 carat, is Fancy Vivid Purplish Pink colour. Report number 16812700, dated 29th January 2008.

7th: Accompanied by a report from the GIA stating that the oval modified brilliant diamond, weighing 1.98 carats, is Fancy Deep Greyish Yellowish Green colour. Report number 14602900, dated 12th October 2005.

8th: Accompanied by a report from the GIA stating that the round-cornered rectangular modified brilliant diamond, weighing 0.37 carat, is Fancy Dark Brown Purple colour. Report number 16914821, dated 24th March 2008.

9th: Accompanied by a report from the GIA stating that the cut-cornered square modified brilliant diamond, weighing 0.76 carat, is Fancy Greyish Yellowish Green colour. Report number 14287302, dated 27th March 2006.

10th: Accompanied by a report from the GIA stating that the cushion modified brilliant diamond, weighing 1.33 carats, is Fancy Vivid Yellow colour, internally flawless clarity. Report number 16193755, dated 1st October 2007.

(10)
£20,000 - 30,000 €28,000 - 42,000



175



176

FROM THE PRIVATE COLLECTION OF ERNESTO AND LIUBA WOLF

Lots 177 – 179

Amassed over the course of six decades, their vast and eclectic collection came to include Byzantine and Medieval glass, antiquarian books, 20th century paintings, ethnographic art and antiquities. Having left Germany for Buenos Aires prior to the outbreak of World War II, Ernesto Wolf (1918-2003), became a successful textile and furniture industrialist before co-founding the Museum of Modern Art and the Sao Luis Gallery in Brazil. His wife, Liuba Boyadjieva (1923-2005) was a former student of Germaine Richier and a noted sculptor in her own right.



177

177 * ≈

A 19TH CENTURY AND LATER GEM-SET AND ENAMEL SALAMANDER BROOCH

Modelled as a green enamel salamander with cushion-shaped rubies along the back and collar, cabochon ruby eyes and a rose-cut diamond highlight to the head, the belly of striped golden and white enamel, suspended from a double-chain terminating in a white enamel plaque with an oval cabochon emerald at the centre and suspending two pearls, the whole suspended from a similar later plaque set with 3.5mm-3.9mm cultured pearls and cushion-shaped rubies, *composite*, length 8.6cm, cased by The Antique Porcelain Co. Ltd. of Bond Street
£4,000 - 6,000 €5,500 - 8,300

178 Ω

AN ENAMEL BROOCH

Designed as a circular cross set with panels of red enamel to a filigree ground, length 4.0cm
£800 - 1,200 €1,100 - 1,700

179 Ω

A NECKLACE AND BRACELET SUITE

The necklace composed of a series of textured 'S' links, accompanied by a matching bracelet that converts to a necklace extension, lengths: necklace 65.0cm, bracelet 20.5cm (2)
£4,800 - 5,200 €6,700 - 7,200



178



179

180

AN EARLY 20TH CENTURY TOPAZ AND DIAMOND BROOCH

The cushion-shaped orange topaz in an openwork surround of old brilliant and cushion-shaped diamonds, millegrain detail throughout, *diamonds approx. 2.80cts total, length 5.1cm*

£3,000 - 4,000 €4,200 - 5,500

181

A SEED PEARL AND DIAMOND NECKLACE, BRACELET AND EARCLIP SUITE

1st: The multi-strand seed pearl necklace terminating with pavé-set single-cut diamond surmounts, to an oval clasp similarly-set with brilliant-cut diamonds, 2nd: The bracelet of similar design, 3rd: Each oval plaque pavé-set with brilliant-cut diamonds, *diamonds approx. 8.10cts total, one seed pearl strand detached from bracelet, lengths: necklace 38.7cm, bracelet 17.8cm, earclip 1.8cm (3) (partially illustrated)*

£3,500 - 4,500 €4,900 - 6,200

182

A DIAMOND DRESS RING

Of tiered design, the rectangular plaque set with brilliant-cut diamonds, *diamonds approx. 3.60cts total, ring size P*

£2,000 - 2,500 €2,800 - 3,500

183

A PEARL AND DIAMOND CROSSOVER RING

The 8.6mm natural pearl set obliquely with a 7.4mm cultured pearl in a mount set with brilliant-cut diamonds, *diamonds approx. 0.70ct total, one diamond deficient, ring size K½*

£1,500 - 2,000 €2,100 - 2,800

Accompanied by a report from AnchorCert stating that the pearl is natural, saltwater. Report number 2002229, dated 20th March 2015.

184

A SINGLE-STRAND CULTURED PEARL NECKLACE WITH AN EARLY 20TH CENTURY PINK SAPPHIRE AND DIAMOND CLASP

Composed of a graduated row of 9.8mm-13.7mm cultured pearls, the clasp centrally collet-set with a cushion-shaped pink sapphire, within a similarly-shaped diamond surround, *diamonds approx. 0.40ct total, length 52.1cm*

£1,000 - 1,500 €1,400 - 2,100

185

A PAIR OF DIAMOND EARSTUDS

Each brilliant-cut diamond, weighing 0.48 and 0.40 carat, in an 18 carat white gold four-claw setting, *European convention mark, partial UK hallmark*

£1,000 - 1,500 €1,400 - 2,100

Accompanied by a report from AnchorCert, stating that the diamond weighing 0.48 carat, is D colour, VVS2 clarity. Report number 20021336, dated 17th December 2014.

Accompanied by a report from AnchorCert, stating that the diamond weighing 0.40 carat, is E colour, VS1 clarity. Report number 20021335, dated 17th December 2014.

186

A CULTURED PEARL, ENAMEL AND DIAMOND BROOCH

The 10.9mm cultured pearl of grey tint, centrally mounted to a contoured polished bar, between baroque pearls of golden tint, each to a line of brilliant-cut diamonds, with black enamel accents, *diamonds approx. 0.80ct total, width 4.7cm*

£1,000 - 1,500 €1,400 - 2,100

187

A DIAMOND RING

The wide band set throughout with brilliant-cut diamonds, *diamonds approx. 2.70cts total, ring size M (leading edge)*

£800 - 1,000 €1,100 - 1,400

188

A PAIR OF ROSE QUARTZ AND DIAMOND EARRINGS

Each heart-shaped rose quartz, within a pavé-set brilliant-cut diamond surround, to a similarly-cut diamond surmount, *diamonds approx. 0.55ct total, length 3.6cm*

£1,000 - 1,500 €1,400 - 2,100

189

A ROCK CRYSTAL, DIAMOND AND ONYX PLAQUE BROOCH

The central frosted rock crystal plaque, highlighted by black enamel accents, within a surround of wave motifs pavé-set with cushion-shaped and rose-cut diamonds, *cushion-shaped diamonds approx. 1.75cts total, width 4.8cm*

£1,500 - 2,000 €2,100 - 2,800

190

A DIAMOND SINGLE-STONE RING

The brilliant-cut diamond, weighing 0.52 carat, mounted in a four-claw setting to a platinum band, *UK hallmark, ring size L½*

£1,000 - 1,500 €1,400 - 2,100

Accompanied by a report from EGL stating that the diamond is D colour and internally flawless. Report number AV1101800, dated 22nd November 2004.

191 Y

A CORAL NECKLACE

The long necklace composed of a series of graduated 5.7mm-21.3mm coral *corallium rubrum* cylindrical beads, *length 97.3cm*

£1,500 - 2,000 €2,100 - 2,800

By family repute, the present lot, which formed part of a large collection of coral and shell, dates to the 19th century and is of Mediterranean origin.

This lot will be subject to USA Fish and Wildlife regulations if it is to be imported into the USA.



180



181



181



184



183



185



182



186



187



189



188



191



190





192



193



194

192 ≈

AN ENAMEL AND DIAMOND BIRD BROOCH, CIRCA 1905

Realistically modelled as a gull in flight, with circular-cut ruby eyes, the feathers of silvery blue enamel, highlighted by rose-cut diamonds, *pin with indistinct maker's mark and French assay mark, later brooch fitting, width 7.5cm*

£2,000 - 3,000 €2,800 - 4,200

196

AN EMERALD AND DIAMOND BROOCH, CIRCA 1925

The openwork brilliant, old brilliant and single-cut diamond panel of geometric design, featuring a centralised cushion-shaped emerald, with millegrain detail throughout, *diamonds approx. 4.15cts total, length 6.9cm, fitted case*

£5,000 - 7,000 €6,900 - 9,700



195

By repute, this brooch was a wedding gift from the notable politician, Sir Stafford Cripps to his daughter-in-law Ann Elizabeth (née Farwell) on the occasion of her marriage to his son, Sir John Cripps in 1971. Thence by decent.

193

AN ART DECO AQUAMARINE AND DIAMOND BROOCH, CIRCA 1925

The step-cut aquamarine mounted in a geometric surround set with single and baguette-cut diamonds, *diamonds approx. 1.80cts total, length 5.0cm*

£1,500 - 2,000 €2,100 - 2,800

197

A PAIR OF DIAMOND CUFFLINKS

Double-sided: One side channel-set with baguette-cut diamonds, each baton with sugarloaf emerald or paste terminals, *diamonds approx. 0.40ct total, French import marks, plaque length 1.9cm*

£700 - 900 €970 - 1,200



196

194

AN AQUAMARINE AND DIAMOND BAR BROOCH

The step-cut aquamarine with cushion-shaped diamond highlights at the cardinal points, to a knife-edge bar, *length 6.3cm*

£800 - 1,200 €1,100 - 1,700

198

AN ART DECO DIAMOND-SET COCKTAIL WATCH, CIRCA 1925

The rectangular dial with Arabic numerals, to a pavé-set single-cut diamond bezel, the corners embellished with millegrain flowerheads, between lugs of similar design, to an adjustable finely woven strap, *diamond approx. 3.40cts total, length adjustable, cased by Goldsmiths and Silversmiths Company*

£1,000 - 1,500 €1,400 - 2,100

195

AN ART DECO EMERALD AND DIAMOND PLAQUE BROOCH, CIRCA 1930

Of rectangular openwork design, centrally-set with two calibré-cut diamonds, between crescent shoulders, pavé-set throughout with brilliant-cut diamonds, highlighted with emeralds in a quatrefoil design, *diamonds approx. 1.50cts total, length 3.6cm*

£1,500 - 2,000 €2,100 - 2,800

199 Ω

AN AQUAMARINE AND DIAMOND BRACELET, CIRCA 1930

Centrally set with a step-cut aquamarine, between single-cut diamond geometric motifs, to an expandable bracelet, *diamonds approx. 0.80ct total, length 17.5cm*

£1,000 - 1,500 €1,400 - 2,100



197



198



199



200



200A

200

AN EMERALD AND DIAMOND BROOCH

Designed as a stylised laurel wreath, with alternating marquise-cut emeralds and diamonds, *diamonds approx. 2.90cts total, diameter 3.3cm*

£1,200 - 1,500 €1,700 - 2,100



201



202



203

200A

AN EMERALD AND DIAMOND DRESS RING

The octagonal step-cut emerald, within a scallop surround of cushion-shaped diamonds, between pierced shoulders of similarly-cut diamonds, *diamonds approx. 1.75cts total, ring size K*

£5,000 - 7,000 €6,900 - 9,700

201

AN ONYX, PEARL AND DIAMOND BAR BROOCH, CIRCA 1930

Centrally-set with three 4.6mm-5.7mm pearls, to an elongated navette-shaped plaque set with rose-cut diamonds and four geometric onyx accents, each with a cushion-shaped diamond highlight, milligrain detail throughout, *cushion-shaped diamonds approx. 0.35ct total, pearls untested, length 8.5cm*

£1,200 - 1,500 €1,700 - 2,100

202

AN ART DECO ONYX AND DIAMOND BROOCH, CIRCA 1920

Of elongated navette form, centrally collet-set with an old brilliant-cut diamond to an onyx plaque, between foliate finals and further onyx plaques, pavé-set with rose and single-cut diamonds, milligrain detail throughout, *diamonds approx. 1.80cts total, partial maker's mark, numbered, French assay marks, length 8.4cm*

£1,200 - 1,500 €1,700 - 2,100

203

A DIAMOND-SET FLOWER BROOCH

The stylised flowerhead set with an old brilliant-cut diamond to a surround of single-cut diamonds and black velvet petals, *diamonds approx. 1.15cts total, French assay mark, length 3.5cm*

£2,000 - 2,500 €2,800 - 3,500

204

A DIAMOND DOUBLE-CLIP BROOCH/ PENDANT, CIRCA 1930

Designed as a stylised openwork fan, set throughout with cushion-shaped, old brilliant and single-cut diamonds, *diamonds approx. 5.70cts total, later pendant fitting, width 5.6cm*

£2,500 - 3,000 €3,500 - 4,200

205

A SAPPHIRE AND DIAMOND BOW BROOCH, FIRST QUARTER OF THE 20TH CENTURY

Of realistic design, centrally-set with an old brilliant-cut diamond, with calibré-cut sapphires representing seams, within a surround of cushion-shaped, old brilliant and rose-cut diamonds, milligrain detail throughout, *cushion-shaped and old brilliant-cut diamonds approx. 1.65cts total, one sapphire deficient, length 8.5cm*

£1,800 - 2,500 €2,500 - 3,500

206

A SAPPHIRE AND DIAMOND RING

The cushion-shaped sapphire, weighing 14.81 carats, in a double four-claw setting between brilliant-cut diamond shoulders, *ring size N*

£5,000 - 6,000 €6,900 - 8,300

Accompanied by a report from The Gem & Pearl Laboratory stating that the sapphire, stated weight 14.81 carats, is natural, of Sri Lankan origin, with no evidence of heat treatment. Report number 09587, dated 18th March 2014.

207

AN ART DECO ONYX AND DIAMOND BRACELET, CIRCA 1920

The articulated series of geometric plaques, with calibré-cut onyx, cushion-shaped and old brilliant-cut diamonds, milligrain detail throughout, to a concealed clasp, *diamonds approx. 4.30cts total, length 17.6cm*

£2,500 - 3,000 €3,500 - 4,200

208 ≈

AN AGATE CIGARETTE HOLDER, BY CARTIER, CIRCA 1920

The stem of translucent banded agate to a rose-cut diamond surmount, highlighted by collet-set cabochon rubies, with a polished case, *signed Cartier Paris Londres New York, numbered, the case signed Cartier with maker's mark, French assay mark and numbered, length 5.7cm (2)*

£3,000 - 3,500 €4,200 - 4,900



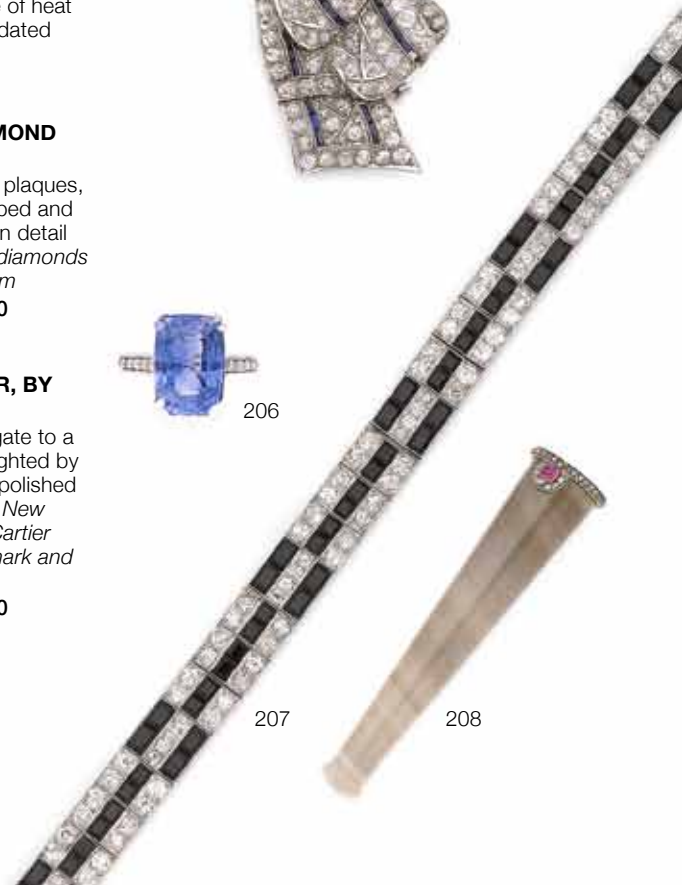
204



205



206



207



208

209

209 Y

A CORAL NECKLACE

The long necklace composed of a series of graduated 7.9mm-22.3mm coral *corallium rubrum* cylindrical beads, *length 105.5cm* (illustrated above)

£1,500 - 2,000 €2,100 - 2,800

By family repute, the present lot, which formed part of a large collection of coral and shell, dates to the 19th century and is of Mediterranean origin.

This lot will be subject to USA Fish and Wildlife regulations if it is to be imported into the USA.

210

A CURB-LINK BRACELET

Designed as a double curb-link chain with textured inner links, *indistinct maker's mark, length 18.6cm*

£3,500 - 4,000 €4,900 - 5,500

211

A SEED PEARL AND ENAMEL PENDANT NECKLACE, CIRCA 1870

Centrally set with a cluster of seed pearls in a star motif, within a domed oval light blue enamel surround, to a tiered border with ropetwist decoration, with an articulated fringe, suspended from a fancy belcher-link chain, *lengths: pendant 8.1cm, chain 45.0cm*

£800 - 1,200 €1,100 - 1,700

212

A CARVED OPAL BROOCH

The carved opal depicting two herons waking in the sunrise within a border of applied bead and wirework, *width 4.2cm*

£2,000 - 2,500 €2,800 - 3,500

213

A LOCKET NECKLACE, SECOND HALF OF THE 19TH CENTURY

The graduated crossover tubular necklace terminating in articulated spiked tassels, suspending a brushed locket with an applied belt motif highlighted with circular cabochon turquoise and rose-cut diamonds, opening to reveal two glazed compartments, *lengths: pendant 6.0cm, necklace approx. 41.0cm*

£1,000 - 1,500 €1,400 - 2,100

214

A TOPAZ RIVIERE NECKLACE

The series of graduated oval-cut foil-backed topaz, in closed-back settings, with applied granulation details, *length 38.0cm*

£800 - 1,200 €1,100 - 1,700

215

A PINK SAPPHIRE, SEED PEARL AND DIAMOND PENDANT NECKLACE

The cushion-shaped pink sapphire, to a scrolling surround and surmount highlighted by rose-cut diamonds, suspending a pair of seed pearls, to a belcher-link chain, *lengths: pendant 4.8cm, chain 42.2cm, cased by F.C. Richards, 67 Temple Row, Birmingham*

£800 - 1,200 €1,100 - 1,700

216

A GEM-SET CHARM BRACELET

The fancy-link bracelet, suspending five gem-set charms, including oval cabochon turquoise, cushion-shaped amethyst, circular-cut emeralds, 6.8mm cultured pearls, circular and oval cabochon garnets, with ropetwist and granulation detail, *length 22.5cm*

£1,500 - 2,000 €2,100 - 2,800

217 ≈

A CHARM BRACELET

The 9 carat yellow gold bracelet set with fifteen charms including a compass, a bloodstone seal, a folding fan, a novelty duck with circular-cut ruby eyes and a sovereign, *makers' marks, UK hallmarks, length 19.0cm*

£1,000 - 1,500 €1,400 - 2,100



210



211



212



215

214



213



217



216

218

AN AQUAMARINE, SAPPHIRE AND DIAMOND DRESS RING

The square-cut aquamarine, in a four-claw setting, between brilliant-cut diamond and marquise-cut sapphire shoulders, to a scrolling gallery, *ring size M½ (sizing beads)*

£800 - 1,200 €1,100 - 1,700

219

A PAIR OF SAPPHIRE AND DIAMOND PENDENT EARRINGS

Each composed of alternating flowerheads, with sapphires and brilliant-cut diamonds, mounted in 18 carat white gold, *diamonds approx. 0.50ct total, maker's mark AN, London hallmark, length 5.2cm*

£1,500 - 2,000 €2,100 - 2,800

220

A DIAMOND NECKLACE

Of graduating rows, terminating in five swags, with brilliant-cut and cushion-shaped diamonds, *diamonds approx. 4.50cts total, length 40.9cm*

£1,500 - 2,000 €2,100 - 2,800

221

A DIAMOND SINGLE-STONE RING

The brilliant-cut diamond, weighing 2.07 carats, in a four-claw setting, *shank split, ring size Q½*

£4,000 - 5,000 €5,500 - 6,900

222

AN AQUAMARINE AND DIAMOND RING

The step-cut aquamarine, in a four-claw setting, between brilliant-cut diamond shoulders, to a bifurcated band, *diamonds approx. 0.35ct total, ring size M*

£1,200 - 1,500 €1,700 - 2,100

223

A SAPPHIRE AND DIAMOND FLOWER SPRAY BROOCH

Of openwork floral design, each flowerhead centrally-set with circular-cut sapphires, to a foliate surround with single and brilliant-cut diamonds, *diamonds approx. 2.80cts total, length 10.2cm*

£1,200 - 1,500 €1,700 - 2,100

224 Ω

AN AQUAMARINE SINGLE-STONE RING

The step-cut aquamarine, in a four-claw setting, *ring size O½*

£1,200 - 1,500 €1,700 - 2,100

225

A SAPPHIRE AND DIAMOND DRESS RING

The collet-set brilliant-cut diamond, to an invisibly-set calibré-cut sapphire band, *diamond approx. 1.10cts, ring size N*

£1,800 - 2,500 €2,500 - 3,500

226

A DIAMOND SINGLE-STONE RING

The brilliant-cut diamond, mounted in a four-claw setting, *diamond approx. 2.00cts, ring size M½*

£2,500 - 3,000 €3,500 - 4,200

227

A DOUBLE-STRAND PEARL NECKLACE

Composed of two graduated lines of 2.4mm-6.1mm pearls, *clasp deficient, length of shortest strand 44.2cm*

£800 - 1,200 €1,100 - 1,700

Accompanied by a report from GCS stating that an extensive sample of pearls has been tested and found to be natural, saltwater. Report number 5775-1046, dated 3rd December 2014.

228

A SAPPHIRE AND DIAMOND RING

The cushion-shaped sapphire, between two similarly-shaped diamonds, *diamonds approx. 1.00ct total, ring size L½*

£1,000 - 1,500 €1,400 - 2,100

229

A SAPPHIRE AND DIAMOND BRACELET

Composed of a series of pierced rectangular plaques set with single-cut diamonds, to a centralised square-cut sapphire, *diamonds approx. 2.40cts total, length 18.0cm*

£1,800 - 2,200 €2,500 - 3,000

230

A DIAMOND BROOCH

Of octagonal and floral openwork design, set with brilliant-cut diamonds, to a pair of stylised ribbons channel-set with baguette-cut diamonds, *diamonds approx. 2.00cts total, length 4.3cm*

£1,800 - 2,200 €2,500 - 3,000

231

A SAPPHIRE AND DIAMOND BROOCH

The openwork brooch set with circular-cut sapphires, baguette and single-cut diamonds, *diamonds approx. 2.45cts total, length 4.6cm*

£1,000 - 1,500 €1,400 - 2,100



218



219



220



221



222



227



228



223



224



225



226



229



231



230



232

232

AN EVENING BAG

Of bi-coloured woven design, opening to reveal a mirrored lid, suspended from a ropetwist chain, accompanied by a comb en suite, widths: bag 14.0cm, comb 10.8cm, cased by Zendrini, Torino-Roma (2) (illustrated above)

£4,000 - 5,000 €5,500 - 6,900

233 Ω

AN AQUAMARINE BROOCH, BY VAN CLEEF & ARPELS, CIRCA 1940

The step-cut aquamarine with foliate decoration at either end, signed Van Cleef & Arpels, French assay mark, maker's mark, length 3.7cm

£3,000 - 5,000 €4,200 - 6,900

234

A TWO-ROW BEADED NECKLACE, BY CHAUMET

Composed of two rows of amethyst and green beads, interlinked by textured rectangular bars, maker's mark, length 36.4cm, maker's case

£800 - 1,200 €1,100 - 1,700

235

A DIAMOND CLUSTER RING

The undulated navette plaque set with brilliant-cut diamonds, to an 18 carat yellow gold band, diamonds approx. 2.05cts total, maker's mark BJD, London hallmark, ring size I (sizing band)

£800 - 1,000 €1,100 - 1,400

236

A DIAMOND-SET PENDANT NECKLACE

The heart-shaped pendant and surmount set with brilliant-cut diamonds to a tubular woven necklace, diamonds approx. 1.40cts total, French assay marks, lengths: pendant 3.2cm, necklace 42.0cm

£3,000 - 5,000 €4,200 - 6,900

237

A PAIR OF DIAMOND EARCLIPS, BY PEDERZANI, CIRCA 1940

Each scrolling surmount set with a graduating line of old brilliant-cut and cushion-shaped diamonds, diamonds approx. 2.00cts total, signed Pederzani, length 2.2cm

£700 - 900 €970 - 1,200

238

A CABLE-LINK NECKLACE

Designed as a faceted cable-link chain to a bolt clasp, maker's mark Sté Clal, length 46.1cm

£1,000 - 1,500 €1,400 - 2,100

239 †

FOUR UNMOUNTED COLOURED DIAMONDS

1st: Accompanied by a report from the GIA, stating that the pear-shaped diamond, weighing 1.00 carat, is Fancy Orange-Brown colour, SI2 clarity. Report number 2161444319, dated 14th August 2014.

2nd: Accompanied by a report from the GIA, stating that the pear-shaped diamond, weighing 0.50 carat, is Fancy Deep Brownish Yellow colour, VS2 clarity. Report number 2165881322, dated 26th January 2014.

3rd: Accompanied by a report from the GIA, stating that the pear-shaped diamond, weighing 0.51 carat, is Fancy Yellow colour, SI2 clarity. Report number 2165648081, dated 28th October 2014.

4th: Accompanied by a report from the GIA, stating that the cushion-shaped diamond, weighing 0.52 carat, is Fancy Yellow colour, SI2 clarity. Report number 1162298340, dated 10th July 2014. (4)

£5,000 - 7,000 €6,900 - 9,700

240

A BOW BROOCH, BY VAN CLEEF & ARPELS, CIRCA 1985

Designed as a polka dot bow, of polished and matt design, signed VCA, maker's mark, numbered, French assay marks, width 6.8cm

£800 - 1,200 €1,100 - 1,700

241

A CURB-LINK BUCKLE BRACELET

Designed as a flat curb-link chain to a buckle clasp, length 21.6cm

£2,000 - 3,000 €2,800 - 4,200

242

AN OPAL AND GEM-SET NECKLACE

Designed as a row of alternating spherical black beads between single-cut diamond roundels, and disc-shaped opals, length 43.7cm

£1,200 - 1,800 €1,700 - 2,500



233

234



239

238



237



236

235



240



241



242

243

A DIAMOND-SET BROOCH

The openwork geometric brooch converting to a pair of dress clips and earclips, pavé, claw and collet-set with brilliant and single-cut diamonds, millegrain detail throughout, *diamonds approx. 5.45cts total, Dutch import marks, length 6.4cm*

£1,500 - 2,000 €2,100 - 2,800

244

TWO CULTURED PEARL NECKLACES

1st: The graduated line of 11.8mm-15.7mm cultured pearls of grey tint, 2nd: The graduated line of 11.2mm-15.7mm cultured pearls of white tint, *lengths: 47.0cm, 45.5cm (2)*

£2,000 - 3,000 €2,800 - 4,200

245

A DIAMOND PENDANT BROOCH

The abstract trefoil brooch set with brilliant and marquise-cut diamonds and suspending a similarly-set pendant, *diamonds approx. 10.40cts total, length 5.7cm*

£3,500 - 4,500 €4,900 - 6,200

By repute, the present lot was presented to the vendor's mother to commemorate the launching of the 'Cepheus', an oil tanker, on 9th September 1971 in Landskrona, Sweden. The Cepheus continues to operate under a Chinese flag and is renamed Hua Hai I.

246

AN AMETHYST AND DIAMOND-SET 'MISS DIOR' RING, BY DIOR

The large oval mixed-cut amethyst, within an openwork tapered band of foliate design, one of the claws accented by brilliant-cut diamonds, *signed Dior, maker's mark, numbered, French assay mark, ring size L (leading edge), maker's case and box*

£1,800 - 2,200 €2,500 - 3,000

247

A DIAMOND SINGLE-STONE RING

The brilliant-cut diamond, mounted in a four-claw setting, *diamond approx. 2.80cts, ring size N*

£4,000 - 6,000 €5,500 - 8,300

248

A PAIR OF DIAMOND EARCLIPS

Each openwork pear-shaped hoop, channel-set with graduating baguette and tapered baguette-cut diamonds, *diamonds approx. 3.70cts total, length 2.4cm*

£1,200 - 1,500 €1,700 - 2,100

249

A WHITE SAPPHIRE AND DIAMOND DRESS RING

The pear-shaped white sapphire, in a raised five-claw setting, between tapered baguette-cut diamond shoulders, *ring size N*

£800 - 1,200 €1,100 - 1,700

250

A PAIR OF DIAMOND AND YELLOW DIAMOND PENDENT EARRINGS

Each flowerhead of brilliant-cut diamonds of yellow tint, within an elongated looping drop of similarly-cut diamonds, *diamonds approx. 7.15cts total, diamonds untested for natural colour, length 4.6cm*

£1,800 - 2,200 €2,500 - 3,000

251

A DIAMOND-SET 'ROYAL OAK' RING, BY AUDEMARS PIGUET

Designed as a rounded octagonal bolt, highlighted by collet-set brilliant-cut diamonds, the inner diameter pavé-set with similarly-cut diamonds, *diamonds approx. 0.40ct total, signed Audemars Piguet, maker's mark AP&Co, French assay mark, ring size K½*

£1,500 - 2,000 €2,100 - 2,800

252

A DIAMOND SINGLE-STONE RING

The brilliant-cut diamond, mounted in an eight-claw setting, *diamond approx. 2.35cts, ring size O*

£4,000 - 6,000 €5,500 - 8,300

253

A DIAMOND BRACELET

The articulated series of single-cut diamonds, highlighted by brilliant-cut diamonds in raised four-claw settings, *diamonds approx. 2.95cts total, Israeli assay mark, length 18.1cm*

£1,500 - 2,000 €2,100 - 2,800

254 ≈

A CULTURED PEARL, SYNTHETIC TURQUOISE, RUBY AND DIAMOND CHOKER, PENDANT AND EARRING SUITE

The triple rows of 4.5mm-4.9mm cultured pearls to an oval synthetic turquoise plaque, within a surround of cultured pearls, brilliant-cut diamonds and pear-shaped rubies, accompanied by a matching pendant and earrings, *diamonds approx. 2.95cts total, length of shortest stand 30.8cm, pendant 4.5cm, earring 3.5cm (3)*

£1,500 - 2,000 €2,100 - 2,800



243



245



247



246



248



250



251

252



249



254



253



254



255

AN ART NOUVEAU ENAMEL, PEARL AND DIAMOND BROOCH, CIRCA 1900

Of scrolling foliate openwork design, centrally-set with an old brilliant-cut diamond, enclosed by rose enamel flowerheads, each with a rose-cut diamond, suspending a 5.1mm-6.4mm pearl, *Russian import mark, pearl untested, length 4.2cm*

£800 - 1,200 €1,100 - 1,700

256

A DIAMOND SINGLE-STONE RING, CIRCA 1935

The old brilliant-cut diamond in an eight-claw setting between scrolling shoulders set with single-cut diamonds to a tapering band, *principle diamond approx. 3.75cts, ring size K*

£8,000 - 12,000 €11,000 - 17,000

257

A PERIDOT AND DIAMOND FRINGE NECKLACE, CIRCA 1900

The graduated series of cut-cornered step-cut peridots spaced by cushion-shaped and old brilliant-cut diamond fan motifs, suspending a fringe of pear-shaped peridots with similarly-cut diamond accents, to a fancy-link backchain, *cushion-shaped diamonds approx. 1.10cts total, length 39.4cm, fitted case by Arthur H. Drew Ltd., 139 Victoria Street SW1*

£3,000 - 4,000 €4,200 - 5,500

258

A DIAMOND BAR BROOCH

The tapered brooch set with old brilliant-cut diamonds, with a cushion-shaped diamond, weighing 0.73 carat, at the centre, millegrain detail throughout, *remaining diamonds approx. 2.50cts total, length 5.8cm*

£2,000 - 2,500 €2,800 - 3,500

Accompanied by a report from SSEF stating that the diamond is natural, Fancy Light Yellow colour, VS2 clarity. Report number 74727, dated 28th May 2014.

259

A SAPPHIRE AND DIAMOND CLUSTER RING

The cushion-shaped sapphire, in a surround of cushion-shaped diamonds, between trifurcated shoulders, to an 18 carat yellow gold band, *diamonds approx. 1.60cts total, London hallmark, ring size N½*

£5,000 - 7,000 €6,900 - 9,700

260

A DIAMOND AND FANCY COLOURED DIAMOND CLUSTER RING

The cushion-shaped fancy yellow diamond, within a surround of similarly-cut diamonds, *principal diamond approx. 1.40cts, remaining diamonds approx. 0.30ct total, ring size O½*

£3,000 - 5,000 €4,200 - 6,900

Accompanied by a report from GCS stating that the principal diamond is natural, Fancy Yellow colour. Report number 5775-1662, dated 24th March 2015.

261

A PEARL AND DIAMOND FLOWER BROOCH, CIRCA 1915

Realistically designed as an orchid and set throughout with old brilliant-cut diamonds and a 3.8mm pearl at the centre, *diamonds approx. 7.90cts total, pearl untested, length 5.8cm, fitted case*

£6,000 - 8,000 €8,300 - 11,000

262

A DIAMOND SINGLE-STONE RING

The old brilliant-cut diamond in an eight-claw setting, to a pierced gallery set with rose-cut diamonds, *principal diamond approx. 2.50cts, ring size I*

£4,000 - 6,000 €5,500 - 8,300

263

A SAPPHIRE AND DIAMOND RING

The oval-cut sapphire set obliquely against a cushion-shaped diamond between two old brilliant-cut diamond highlights and scrolling shoulders set with single-cut diamonds, *diamonds approx. 1.35cts total, ring size O½*

£2,500 - 3,500 €3,500 - 4,900

264

A PEARL AND SAPPHIRE FRINGE NECKLACE

Composed of a graduated line of 4.9mm-7.7mm pearls suspending oval-cut sapphires to rose-cut diamond surmounts and a similarly-cut diamond clasp, *two diamonds deficient, length 35.6cm*

£6,000 - 8,000 €8,300 - 11,000

Accompanied by a report from GCS stating that an extensive sample of pearls was tested and found to be natural, saltwater, with no indications of treatment. Report number 5775-1608, dated 19th March 2015.

265

A PEARL AND DIAMOND BROOCH, CIRCA 1890

The 9.9mm x 8.4mm natural pearl mounted in an openwork scrolling trefoil motif set with cushion-shaped diamonds, *diamonds approx. 5.40cts total, length 3.7cm*

£3,000 - 5,000 €4,200 - 6,900

Accompanied by a report from GCS stating that the pearl is natural, saltwater. Report number 5775-1573, dated 19th March 2015.

266

AN EARLY 20TH CENTURY ENAMEL AND SAPPHIRE BROOCH

The navette-shaped plaque of white guilloché enamel, centrally-set with a circular cabochon sapphire to an engraved surround, *Russian assay mark, width 3.7cm*

£800 - 1,200 €1,100 - 1,700

Provenance

With Countess Elena Bobrinsky (1914-1996)

Countess Elena Bobrinsky was the daughter of Count Lev Alexeievich Bobrinsky (1878-1922) and Princess Vera Galitzine (1878-1967), a descendent of Catherine the Great.

267

A PAIR OF SAPPHIRE AND DIAMOND EARSTUDS

Each circular-cut sapphire mounted in a nine-claw setting within a surround of brilliant-cut diamonds, *diamonds approx. 1.25cts total, length 1.2cm, cased by Heming & Co. Ltd., 28 & 29 Conduit Street, London*

£800 - 1,200 €1,100 - 1,700



255



258



256



259



260



261



262



263



264



265



266



267





268

268

AN AMBER BEAD NECKLACE

Composed of a series of 20.5mm-33.0mm oblong amber beads separated by reeded spherical spacers, *length 60.0cm* (illustrated above)

£800 - 1,200 €1,100 - 1,700

Accompanied by a report from GCS stating that the amber is natural, of Baltic origin, with no indication of heating. Report number 5775-1423, dated 2nd March 2015.

269

A PAIR EARCLIPS, BY VERDURA

Each clip designed as a knot of intertwined polished and walnut sections, *signed Verdura, maker's mark, length 2.3cm*

£2,000 - 3,000 €2,800 - 4,200

270

A DIAMOND SINGLE-STONE RING

The princess-cut diamond, weighing 2.02 carats, in a four-claw setting to an 18 carat yellow gold band, *UK hallmark, ring size M (sizing beads)*

£8,000 - 10,000 €11,000 - 14,000

Accompanied by a report check from GIA stating that the diamond is D colour, VS2 clarity. Report number 2111770249, dated 3rd March 2010.

271 Y

A CORAL AND DIAMOND 'ARIES' PENDANT, BY ASPREY & CO. AND A NECKLACE BY BEN ROSENFELD, 1974-5

The textured openwork pendant of 18 carat yellow gold, set with a coral *corallium rubrum* goat's head with a brilliant-cut diamond eye, accompanied by an 18 carat yellow gold textured fancy-link chain, *makers' marks, first with UK import mark, second with UK hallmark, one link broken, lengths: pendant 7.4cm, necklace 75.0cm (2)*

£2,700 - 3,000 €3,700 - 4,200

This lot will be subject to USA Fish and Wildlife regulations if it is to be imported into the USA.

272

A DIAMOND-SET BROOCH, CIRCA 1975

Designed as a stylised sheaf of wheat, centrally-set with a row of graduating brilliant-cut diamonds, highlighted throughout by similarly and baguette-cut diamonds, *diamonds approx. 1.35cts total, length 6.1cm*

£800 - 1,200 €1,100 - 1,700

273

A DIAMOND-SET RING, BY DICKSON YEWN

Modelled as the skin of a tiger, the stomach highlighted by single-cut diamonds and the back pavé-set with brilliant-cut treated black diamonds, *diamonds approx. 0.70ct total, inscribed 'dickson Yewn for Save China's Tigers', numbered 333001, ring size M*

£800 - 1,200 €1,100 - 1,700

This lot is a limited edition of ninety-nine rings created by the Hong Kong based jeweller, Dickson Yewn for the charity Save China's Tigers. Different and distinct like the tiger, each ring is numbered 333001 to 333099. In line with Chinese word and number associations, '333' means 'alive alive alive' and '99' means 'forever forever'.

Save China's Tigers works to conserve the endangered South China tiger and its habitat through a range of projects, including the introduction of zoo-bred tigers to the wild and the restoration of eco-systems that are vital to the tigers' survival.

274

A CULTURED PEARL AND DIAMOND BROOCH

Of abstract design, highlighted by brilliant-cut diamonds with a central baroque cultured pearl, *diamonds approx. 1.00ct total, length 4.0cm*

£1,200 - 1,500 €1,700 - 2,100

275

A DIAMOND RING, BY KUTCHINSKY, 1980

The series of brilliant-cut diamonds, in chevron form, to an 18 carat yellow gold band, *diamonds approx. 1.75cts total, signed Kutchinsky, maker's mark Kld, London hallmark, ring size K½*

£700 - 900 €970 - 1,200

276

A DIAMOND SPRAY BROOCH, CIRCA 1975

Of textured abstract design, highlighted by a radiating cluster of brilliant-cut diamonds, to a bed of sculpted leaves, *diamonds approx. 1.60cts total, length 6.1cm*

£1,000 - 1,500 €1,400 - 2,100

277

A CITRINE AND DIAMOND DRESS RING

The square fancy-cut citrine, within a fluted collet-setting, between shoulders pavé-set with brilliant-cut diamonds, *diamonds approx. 0.70ct total, maker's mark, French assay mark, central gemstone removable, ring size L*

£800 - 1,200 €1,100 - 1,700

278

A CITRINE BRACELET

The series of collet-set circular fancy-cut citrines, between large saltire links, *maker's mark MK, length 20.0cm*

£1,500 - 2,000 €2,100 - 2,800

279

A GOLD AND DIAMOND-SET WRISTWATCH, BY KUTCHINSKY, 1965

The woven 18 carat yellow gold jarretière set with square step and brilliant-cut diamonds, with a spring opening revealing the rectangular dial, *diamonds approx. 1.70cts total, maker's mark Kld, dial signed Blancpain, numbered, London hallmark, length 16.9cm*

£2,500 - 3,000 €3,500 - 4,200

280

A TOURMALINE DRESS RING, BY FIONA KNAPP

The large oval pink tourmaline cabochon, collet-set within a surround and graduating hoop of hammered design, *maker's mark FKL, ring size M (leading edge), maker's case*

£800 - 1,200 €1,100 - 1,700



269



270



272



271



275



273



274



276



277



278



279



280



285



286



287



281



282



281

A DIAMOND BROOCH/PENDANT, CIRCA 1930

The old brilliant-cut roundels with tiered finials of similarly and single-cut diamonds, centrally highlighted by a graduated trio of collet-set old brilliant-cut diamonds, *diamonds approx. 11.05cts total, pin detachable, length 5.7cm*
£6,000 - 8,000 €8,300 - 11,000

282

A PAIR OF DIAMOND EARCLIPS, CIRCA 1935

Each single-cut diamond crescent between a graduated series of collet-set old brilliant-cut diamonds, *diamonds approx. 1.75cts total, length 1.8cm*
£1,800 - 2,200 €2,500 - 3,000

283 ≈

A RUBY AND DIAMOND CLUSTER RING

The oval-cut ruby, mounted in a nine-claw setting, within a surround of brilliant-cut diamonds, *diamonds approx. 2.25cts total, ring size M*
£10,000 - 15,000 €14,000 - 21,000

Accompanied by a report from SSEF stating that the ruby is of Burmese origin, with no evidence of heat treatment. Report number 75974, dated 20th August 2014.



283

284

A DIAMOND SINGLE-STONE RING

The brilliant-cut diamond, weighing 2.04 carats, mounted in an eight-claw setting, *ring size K½*
£8,000 - 10,000 €11,000 - 14,000

285 ≈

AN EARLY 20TH CENTURY RUBY AND DIAMOND RING

The five graduated cushion-shaped rubies in millegrain collet-settings, with single-cut diamond highlights, *ring size N*
£3,500 - 4,000 €4,900 - 5,500

Accompanied by a report from GCS stating that the rubies are of Burmese origin, with no evidence of treatment. Report number 5775-1157, dated 8th December 2014.

286

A DIAMOND SINGLE-STONE PENDANT NECKLACE

The step-cut diamond, mounted in a collet setting and suspended from a snake-link chain, *diamond approx. 6.50cts, length 42.0cm*
£10,000 - 15,000 €14,000 - 21,000

287

A PAIR OF DIAMOND SET-EARRINGS

Each pear-shaped diamond suspended within a surround of brilliant-cut diamonds to an old brilliant-cut diamond spacer and cushion-shaped diamond cluster surmount, *diamonds approx. 4.15cts total, length 3.0cm*
£8,000 - 10,000 €11,000 - 14,000



284



288

288

A SAPPHIRE AND DIAMOND PENDANT NECKLACE

The pierced pendant set with circular and oval-cut sapphires, within a surround of brilliant and rose-cut diamonds, to an integral fine-link chain, millegrain detail throughout, *brilliant-cut diamonds approx. 0.30ct total, lengths: pendant 4.5cm, necklace 65.0cm*
£2,000 - 3,000 €2,800 - 4,200



289

289

A DIAMOND BROOCH/PENDANT, CIRCA 1935

Of circular openwork design, set throughout with cushion-shaped, old brilliant and rose-cut diamonds, featuring a centralised and similarly-cut diamond ray, millegrain detail throughout, *cushion-shaped and old brilliant-cut diamonds approx. 5.20cts total, length 4.1cm*
£3,500 - 4,000 €4,900 - 5,500

290

A SAPPHIRE, PASTE AND DIAMOND BRACELET

The openwork bracelet set with French-cut sapphires, alternating with brilliant-cut diamond connections, *diamonds approx. 1.40cts total, some paste replacements, length 16.8cm*
£4,000 - 6,000 €5,500 - 8,300

291

A DIAMOND THREE-STONE RING

Composed of old brilliant-cut diamonds, the largest to the centre, *principal diamond approx. 1.70cts, remaining diamonds approx. 2.55cts total, ring size P½*
£6,000 - 8,000 €8,300 - 11,000

292

AN ART DECO DIAMOND RING, CIRCA 1925

The old brilliant-cut diamond, within a baguette and brilliant-cut diamond square surround, *principal diamond approx. 1.45cts, remaining diamonds approx. 0.40ct total, ring size M*
£4,000 - 6,000 €5,500 - 8,300

293

A DIAMOND SINGLE-STONE RING

The step-cut diamond, mounted in a collet-setting, *diamond approx. 4.75cts, ring size K½*
£7,000 - 9,000 €9,700 - 12,000

294

A SAPPHIRE AND DIAMOND RING, CIRCA 1935

The cut-cornered step-cut sapphire in a finely pierced scrolling foliate mount set with single and baguette-cut diamonds, millegrain detail throughout, *diamonds approx. 0.90ct total, ring size H (leading edge)*
£6,000 - 8,000 €8,300 - 11,000

295

A PAIR OF DIAMOND EARCLIPS, CIRCA 1940

Of pennanular form, with courses of channel-set baguette-cut diamonds, to triangular finials of brilliant-cut diamonds, *diamonds approx. 3.55cts total, French assay mark, length 2.4cm*
£2,000 - 3,000 €2,800 - 4,200

End of Sale

The next Knightsbridge Jewellery Sale will be held on Wednesday 10 June 2015



291



290



292



293



294



295

Index	Lot No
Asprey & Co.	271
Audemars Piguet	251
Ben Rosenfeld	271
Bulgari	3, 5, 62
Cartier	8, 39, 123, 208
Chaumet	129, 234
de Vroomen	132
Dickson Yewn	273
Dior	246
Fiona Knapp	280
Henri Vever	101
Hermès	126
Kutchinsky	9, 148, 275, 279
Longines	94
Madoura	174
Nathaniel Marchant	152
Pederzani	237
Pomellato	4, 91
Puig Doria	93, 142, 146
Ronald Abram	61
Theo Fennell	121
Tiffany & Co.	96
Van Cleef & Arpels	1, 233, 240
Verdura	269
Wilm	134
Yves Saint Laurent	92

Diamond Grading

Colour

GIA	CIBJO	UK TRADITIONAL
D	Exceptional White +	Finest White
E	Exceptional White	Finest White
F	Rare White +	Fine White
G	Rare White	Fine White
H	White	White
I	Slightly Tinted White	Commercial White
J	Slightly Tinted White	Top Silver Cape
K	Tinted White	Top Silver Cape
L	Tinted White	Silver Cape
M to N	Tinted Colour	Light Cape
O to R	Tinted Colour	Cape
R to Z	Tinted Colour	Dark Cape

Clarity

IF	Internally Flawless	No inclusions and only insignificant surface blemishes when viewed under 10X magnification
VVS1-VVS2	Very, Very Slightly Included	Minute inclusions that are incredibly difficult to see under 10X magnification, generally only visible from the back of the stone and may be removed easily by repolishing
VS1-VS2	Very Slightly Included	Minor inclusions that range from difficult (VS1) to slightly easier (VS2) to see under 10X magnification
SI1-2	Slightly Included	Noticeable inclusions that are easy (SI1) or very easy (SI2) to see under 10X magnification
I1-3	Obvious Inclusions	Obvious inclusions that are easily visible under 10X magnification and in some cases may even be seen without magnification

Ring Sizes

English	Metric	American	French/Japanese
A	37.8252	$\frac{1}{2}$	-
A $\frac{1}{2}$	38.4237	$\frac{3}{4}$	-
B	39.0222	1	-
B $\frac{1}{2}$	39.6207	1 $\frac{1}{4}$	-
C	40.2192	1 $\frac{1}{2}$	-
C $\frac{1}{2}$	40.8177	1 $\frac{3}{4}$	-
D	41.4162	2	1
D $\frac{1}{2}$	42.0147	2 $\frac{1}{4}$	2
E	42.6132	2 $\frac{1}{2}$	-
E $\frac{1}{2}$	43.2117	2 $\frac{3}{4}$	3
F	43.8102	3	4
F $\frac{1}{2}$	44.4087	3 $\frac{1}{4}$	-
G	45.0072	3 $\frac{1}{4}$	5
G $\frac{1}{2}$	45.6057	3 $\frac{1}{2}$	-
H	46.2042	3 $\frac{3}{4}$	6
H $\frac{1}{2}$	46.8027	4	-
I	47.4012	4 $\frac{1}{4}$	7
I $\frac{1}{2}$	47.9997	4 $\frac{1}{2}$	8
J	48.5982	4 $\frac{3}{4}$	-
J $\frac{1}{2}$	49.1967	5	9
K	49.7952	5 $\frac{1}{4}$	10
K $\frac{1}{2}$	50.3937	5 $\frac{1}{2}$	-
L	50.9922	5 $\frac{3}{4}$	11
L $\frac{1}{2}$	51.5907	6	-
M	52.1892	6 $\frac{1}{4}$	12
M $\frac{1}{2}$	52.7877	6 $\frac{1}{2}$	13
N	53.4660	6 $\frac{3}{4}$	-
N $\frac{1}{2}$	54.1044	7	14
O	54.7428	7	15
O $\frac{1}{2}$	55.3812	7 $\frac{1}{4}$	-
P	56.0196	7 $\frac{1}{2}$	16
P $\frac{1}{2}$	56.6580	7 $\frac{3}{4}$	-
Q	57.2964	8	17
Q $\frac{1}{2}$	57.9348	8 $\frac{1}{4}$	18
R	58.5732	8 $\frac{1}{2}$	-
R $\frac{1}{2}$	59.2116	8 $\frac{3}{4}$	19
S	59.8500	9	20
S $\frac{1}{2}$	60.4884	9 $\frac{1}{4}$	-
T	61.1268	9 $\frac{1}{2}$	21
T $\frac{1}{2}$	61.7652	9 $\frac{3}{4}$	22
U	62.4026	10	-
U $\frac{1}{2}$	63.0420	10 $\frac{1}{4}$	23
V	63.6804	10 $\frac{1}{2}$	24
V $\frac{1}{2}$	64.3188	10 $\frac{3}{4}$	-
W	64.8774	11	25
W $\frac{1}{2}$	65.4759	11 $\frac{1}{4}$	-
X	66.0744	11 $\frac{1}{2}$	26
X $\frac{1}{2}$	66.6729	11 $\frac{3}{4}$	-
Y	67.2714	12	-
Y $\frac{1}{2}$	67.8699	12 $\frac{1}{4}$	-
Z	68.4684	12 $\frac{1}{2}$	-

**FINE WATCHES
AND WRISTWATCHES**

Wednesday 10 June 2015
New Bond Street, London

PATEK PHILIPPE

A very fine and rare platinum manual
wind perpetual calendar wristwatch
with moon phase, Ref:5970P

£120,000 - 160,000

ENQUIRIES

+44 (0) 207 393 3869
watches@bonhams.com



Bonhams

LONDON

bonhams.com/watches

**DECORATIVE ARTS
FROM 1860**

Wednesday 17 June 2015
New Bond Street, London

DEMETRE CHIPARUS (1886-1947)

'Semiramis' An Impressive Art Deco
Cold-Painted Bronze and Carved
Ivory Statue, circa 1928
£60,000 - £80,000

VIEWING

14 - 16 June 2015

ENQUIRIES

+44 (0) 20 7393 3856
mark.oliver@bonhams.com



Bonhams

LONDON

bonhams.com/design1860

NOTICE TO BIDDERS

This notice is addressed by *Bonhams* to any person who may be interested in a *Lot*, including *Bidders* and potential *Bidders* (including any eventual *Buyer* of the *Lot*). For ease of reference we refer to such persons as “*Bidders*” or “you”. Our List of Definitions and Glossary is incorporated into this *Notice to Bidders*. It is at Appendix 3 at the back of the *Catalogue*. Where words and phrases are used in this notice which are in the List of Definitions, they are printed in italics.

IMPORTANT: Additional information applicable to the *Sale* may be set out in the *Catalogue* for the *Sale*, in an insert in the *Catalogue* and/or in a notice displayed at the *Sale* venue and you should read them as well. Announcements affecting the *Sale* may also be given out orally before and during the *Sale* without prior written notice. You should be alert to the possibility of changes and ask in advance of bidding if there have been any.

1. OUR ROLE

In its role as *Auctioneer* of *Lots*, *Bonhams* acts solely for and in the interests of the *Seller*. *Bonhams’* job is to sell the *Lot* at the highest price obtainable at the *Sale* to a *Bidder*. *Bonhams* does not act for *Buyers* or *Bidders* in this role and does not give advice to *Buyers* or *Bidders*. When it or its staff make statements about a *Lot* or, if *Bonhams* provides a *Condition Report* on a *Lot* it is doing that on behalf of the *Seller* of the *Lot*. *Bidders* and *Buyers* who are themselves not expert in the *Lots* are strongly advised to seek and obtain independent advice on the *Lots* and their value before bidding for them. The *Seller* has authorised *Bonhams* to sell the *Lot* as its agent on its behalf and, save where we expressly make it clear to the contrary, *Bonhams* acts only as agent for the *Seller*. Any statement or representation we make in respect of a *Lot* is made on the *Seller’s* behalf and, unless *Bonhams* sells a *Lot* as principal, not on our behalf and any *Contract for Sale* is between the *Buyer* and the *Seller* and not with us. If *Bonhams* sells a *Lot* as principal this will either be stated in the *Catalogue* or an announcement to that effect will be made by the *Auctioneer*, or it will be stated in a notice at the *Sale* or an insert in the *Catalogue*.

Bonhams does not owe or undertake or agree to any duty or responsibility to you in contract or tort (whether direct, collateral, express, implied or otherwise). If you successfully bid for a *Lot* and buy it, at that stage *Bonhams* does enter into an agreement with the *Buyer*. The terms of that contract are set out in our *Buyer’s Agreement*, which you will find at Appendix 2 at the back of the *Catalogue*. This will govern *Bonhams’* relationship with the *Buyer*.

2. LOTS

Subject to the *Contractual Description* printed in bold letters in the *Entry* about the *Lot* in the *Catalogue* (see paragraph 3 below), *Lots* are sold to the *Buyer* on an “as is” basis, with all faults and imperfections. Illustrations and photographs contained in the *Catalogue* (other than photographs forming part of the *Contractual Description*) or elsewhere of any *Lots* are for identification purposes only. They may not reveal the true condition of the *Lot*. A photograph or illustration may not reflect an accurate reproduction of the colour(s) of the *Lot*. *Lots* are available for inspection prior to the *Sale* and it is for you to satisfy yourself as to each and every aspect of a *Lot*, including its authorship, attribution, condition, provenance, history, background, authenticity, style, period, age, suitability, quality, roadworthiness (if relevant), origin, value and estimated selling price (including the *Hammer Price*). It is your responsibility to examine any *Lot* in which you are interested. It should be remembered that the actual condition of a *Lot* may not be as good as that indicated by its outward appearance. In particular, parts may have been replaced or renewed and *Lots* may not be authentic or of satisfactory quality; the inside of a *Lot* may not be visible and may not be original or may be damaged, as for example where it is covered by upholstery or material. Given the age of many *Lots* they may have been damaged and/or repaired and you should not assume that a *Lot* is in good condition. Electronic or mechanical parts may not operate or may not comply with current statutory requirements. You should not assume that electrical items designed to operate on mains electricity will be suitable for connection to the mains electricity supply and you should obtain a report from

a qualified electrician on their status before doing so. Such items which are unsuitable for connection are sold as items of interest for display purposes only. If you yourself do not have expertise regarding a *Lot*, you should consult someone who does to advise you. We can assist in arranging facilities for you to carry out or have carried out more detailed inspections and tests. Please ask our staff for details.

Any person who damages a *Lot* will be held liable for the loss caused.

3. DESCRIPTIONS OF LOTS AND ESTIMATES

Contractual Description of a Lot

The *Catalogue* contains an *Entry* about each *Lot*. Each *Lot* is sold by its respective *Seller* to the *Buyer* of the *Lot* as corresponding only with that part of the *Entry* which is printed in bold letters and (except for the colour, which may be inaccurately reproduced) with any photograph of the *Lot* in the *Catalogue*. The remainder of the *Entry*, which is not printed in bold letters, represents *Bonhams’* opinion (given on behalf of the *Seller*) about the *Lot* only and is not part of the *Contractual Description* in accordance with which the *Lot* is sold by the *Seller*.

Estimates

In most cases, an *Estimate* is printed beside the *Entry*. *Estimates* are only an expression of *Bonhams’* opinion made on behalf of the *Seller* of the range where *Bonhams* thinks the *Hammer Price* for the *Lot* is likely to fall; it is not an *Estimate* of value. It does not take into account any VAT or *Buyer’s Premium* payable. *Lots* can in fact sell for *Hammer Prices* below and above the *Estimate*. Any *Estimate* should not be relied on as an indication of the actual selling price or value of a *Lot*. *Estimates* are in the currency of the *Sale*.

Condition Reports

In respect of most *Lots*, you may ask for a *Condition Report* on its physical condition from *Bonhams*. If you do so, this will be provided by *Bonhams* on behalf of the *Seller* free of charge. *Bonhams* is not entering into a contract with you in respect of the *Condition Report* and accordingly does not assume responsibility to you in respect of it. Nor does the *Seller* owe or agree to owe you as a *Bidder* any obligation or duty in respect of this free report about a *Lot*, which is available for your own inspection or for inspection by an expert instructed by you. However, any written *Description* of the physical condition of the *Lot* contained in a *Condition Report* will form part of the *Contractual Description* of the *Lot* under which it is sold to any *Buyer*.

The Seller’s responsibility to you

The *Seller* does not make or agree to make any representation of fact or contractual promise, *Guarantee* or warranty and undertakes no obligation or duty, whether in contract or in tort (other than to the eventual *Buyer* as set out above), in respect of the accuracy or completeness of any statement or representation made by him or on his behalf, which is in any way descriptive of any *Lot* or as to the anticipated or likely selling price of any *Lot*. Other than as set out above, no statement or representation in any way descriptive of a *Lot* or any *Estimate* is incorporated into any *Contract for Sale* between a *Seller* and a *Buyer*.

Bonhams’ responsibility to you

You have the opportunity of examining the *Lot* if you want to and the *Contract for Sale* for a *Lot* is with the *Seller* and not with *Bonhams*; *Bonhams* acts as the *Seller’s* agent only (unless *Bonhams* sells the *Lot* as principal).

Bonhams undertakes no obligation to you to examine, investigate or carry out any tests, either in sufficient depth or at all, on each *Lot* to establish the accuracy or otherwise of any *Descriptions* or opinions given by *Bonhams*, or by any person on *Bonhams’* behalf, whether in the *Catalogue* or elsewhere.

You should not suppose that such examinations, investigations or tests have occurred.

Bonhams does not make or agree to make any representation of fact, and undertakes no obligation or duty (whether in contract or tort) in respect of the accuracy or completeness of any statement or representation made by *Bonhams* or on

Bonhams’ behalf which is in any way descriptive of any *Lot* or as to the anticipated or likely selling price of any *Lot*. No statement or representation by *Bonhams* or on its behalf in any way descriptive of any *Lot* or any *Estimate* is incorporated into our *Buyer’s Agreement*.

Alterations

Descriptions and *Estimates* may be amended at *Bonhams’* discretion from time to time by notice given orally or in writing before or during a *Sale*.

THE *LOT* IS AVAILABLE FOR INSPECTION AND YOU MUST FORM YOUR OWN OPINION IN RELATION TO IT. YOU ARE STRONGLY ADVISED TO EXAMINE ANY *LOT* OR HAVE IT EXAMINED ON YOUR BEHALF BEFORE THE *SALE*.

4. CONDUCT OF THE SALE

Our *Sales* are public auctions which persons may attend and you should take the opportunity to do so. We do reserve the right at our sole discretion to refuse admission to our premises or to any *Sale* without stating a reason. We have complete discretion as to whether the *Sale* proceeds, whether any *Lot* is included in the *Sale*, the manner in which the *Sale* is conducted and we may offer *Lots* for *Sale* in any order we choose notwithstanding the numbers given to *Lots* in the *Catalogue*. You should therefore check the date and starting time of the *Sale*, whether there have been any withdrawals or late entries. Remember that withdrawals and late entries may affect the time at which a *Lot* you are interested in is put up for *Sale*. We have complete discretion to refuse any bid, to nominate any bidding increment we consider appropriate, to divide any *Lot*, to combine two or more *Lots*, to withdraw any *Lot* from a *Sale* and, before the *Sale* has been closed, to put up any *Lot* for auction again. Auction speeds can exceed 100 *Lots* to the hour and bidding increments are generally about 10%. However these do vary from *Sale* to *Sale* and from *Auctioneer* to *Auctioneer*. Please check with the department organising the *Sale* for advice on this. Where a *Reserve* has been applied to a *Lot*, the *Auctioneer* may, in his absolute discretion, place bids (up to an amount not equalling or exceeding such *Reserve*) on behalf of the *Seller*. We are not responsible to you in respect of the presence or absence of any *Reserve* in respect of any *Lot*. If there is a *Reserve* it will normally be no higher than the lower figure for any *Estimate* in the *Catalogue*, assuming that the currency of the *Reserve* has not fluctuated adversely against the currency of the *Estimate*. The *Buyer* will be the *Bidder* who makes the highest bid acceptable to the *Auctioneer* for any *Lot* (subject to any applicable *Reserve*) to whom the *Lot* is knocked down by the *Auctioneer* at the fall of the *Auctioneer’s* hammer. Any dispute as to the highest acceptable bid will be settled by the *Auctioneer* in his absolute discretion. All bids tendered will relate to the actual *Lot* number announced by the *Auctioneer*. An electronic currency converter may be used at the *Sale*. This equipment is provided as a general guide as to the equivalent amount in certain currencies of a given bid. We do not accept any responsibility for any errors which may occur in the use of the currency converter. We may use video cameras to record the *Sale* and may record telephone calls for reasons of security and to assist in solving any disputes which may arise in relation to bids made at the *Sale*. At some *Sales*, for example, jewellery *Sales*, we may use screens on which images of the *Lots* will be projected. This service is provided to assist viewing at the *Sale*. The image on the screen should be treated as an indication only of the current *Lot*. It should be noted that all bids tendered will relate to the actual *Lot* number announced by the *Auctioneer*. We do not accept any responsibility for any errors which may occur in the use of the screen.

5. BIDDING

We do not accept bids from any person who has not completed and delivered to us one of our *Bidding Forms*, either our *Bidder Registration Form*, *Absentee Bidding Form* or *Telephone Bidding Form*. You will be asked for proof of identity, residence and references, which, when asked for, you must supply if your bids are to be accepted by us. Please bring your passport, driving licence (or similar photographic proof of identity) and proof of address. We may request a deposit from you before allowing you to bid. We may refuse entry to a *Sale* to any person even if that person has completed a *Bidding Form*.

Bidding in person

You should come to our *Bidder* registration desk at the *Sale* venue and fill out a *Bidder* Registration Form on (or, if possible, before) the day of the *Sale*. The bidding number system is sometimes referred to as “paddle bidding”. You will be issued with a large card (a “paddle”) with a printed number on it. This will be attributed to you for the purposes of the *Sale*. Should you be a successful *Bidder* you will need to ensure that your number can be clearly seen by the *Auctioneer* and that it is your number which is identified as the *Buyer's*. You should not let anyone else use your paddle as all *Lots* will be invoiced to the name and address given on your *Bidder* Registration Form. Once an invoice is issued it will not be changed. If there is any doubt as to the *Hammer Price* of, or whether you are the successful *Bidder* of, a particular *Lot*, you must draw this to the attention of the *Auctioneer* before the next *Lot* is offered for *Sale*. At the end of the *Sale*, or when you have finished bidding please return your paddle to the *Bidder* registration desk.

Bidding by telephone

If you wish to bid at the *Sale* by telephone, please complete a Telephone *Bidding Form*, which is available from our offices or in the *Catalogue*. Please then return it to the office responsible for the *Sale* at least 24 hours in advance of the *Sale*. It is your responsibility to check with our Bids Office that your bid has been received. Telephone calls will be recorded. The telephone bidding facility is a discretionary service and may not be available in relation to all *Lots*. We will not be responsible for bidding on your behalf if you are unavailable at the time of the *Sale* or if the telephone connection is interrupted during bidding. Please contact us for further details.

Bidding by post or fax

Absentee *Bidding Forms* can be found in the back of this *Catalogue* and should be completed and sent to the office responsible for the *Sale*. It is in your interests to return your form as soon as possible, as if two or more *Bidders* submit identical bids for a *Lot*, the first bid received takes preference. In any event, all bids should be received at least 24 hours before the start of the *Sale*. Please check your Absentee *Bidding Form* carefully before returning it to us, fully completed and signed by you. It is your responsibility to check with our Bids Office that your bid has been received. This additional service is complimentary and is confidential. Such bids are made at your own risk and we cannot accept liability for our failure to receive and/or place any such bids. All bids made on your behalf will be made at the lowest level possible subject to *Reserves* and other bids made for the *Lot*. Where appropriate your bids will be rounded down to the nearest amount consistent with the *Auctioneer's* bidding increments. New *Bidders* must also provide proof of identity and address when submitting bids. Failure to do this will result in your bid not being placed.

Bidding via the internet

Please visit our *Website* at <http://www.bonhams.com> for details of how to bid via the internet.

Bidding through an agent

Bids will be accepted as placed on behalf of the person named as the principal on the *Bidding Form* although we may refuse to accept bids from an agent on behalf of a principal and will require written confirmation from the principal confirming the agent's authority to bid. Nevertheless, as the *Bidding Form* explains, any person placing a bid as agent on behalf of another (whether or not he has disclosed that fact or the identity of his principal) will be jointly and severally liable with the principal to the *Seller* and to *Bonhams* under any contract resulting from the acceptance of a bid. Subject to the above, please let us know if you are acting on behalf of another person when bidding for *Lots* at the *Sale*.

Equally, please let us know if you intend to nominate another person to bid on your behalf at the *Sale* unless this is to be carried out by us pursuant to a Telephone or Absentee *Bidding Form* that you have completed. If we do not approve the agency arrangements in writing before the *Sale*, we are entitled to assume that the person bidding at the *Sale* is bidding on his own behalf. Accordingly, the person bidding at the *Sale* will be the *Buyer* and will be liable to pay the *Hammer Price* and *Buyer's Premium* and associated charges. If we approve the identity of your client in advance, we will be in a position to

address the invoice to your principal rather than you. We will require proof of the agent's client's identity and residence in advance of any bids made by the agent on his behalf. Please refer to our *Conditions of Business* and contact our Customer Services Department for further details.

6. CONTRACTS BETWEEN THE BUYER AND SELLER AND THE BUYER AND BONHAMS

On the *Lot* being knocked down to the *Buyer*, a *Contract for Sale* of the *Lot* will be entered into between the *Seller* and the *Buyer* on the terms of the *Contract for Sale* set out in Appendix 1 at the back of the *Catalogue*. You will be liable to pay the *Purchase Price*, which is the *Hammer Price* plus any applicable VAT. At the same time, a separate contract is also entered into between us as *Auctioneers* and the *Buyer*. This is our *Buyer's Agreement*, the terms of which are set out in Appendix 2 at the back of the *Catalogue*. Please read the terms of the *Contract for Sale* and our *Buyer's Agreement* contained in the *Catalogue* in case you are the successful *Bidder*. We may change the terms of either or both of these agreements in advance of their being entered into, by setting out different terms in the *Catalogue* and/or by placing an insert in the *Catalogue* and/or by notices at the *Sale* venue and/or by oral announcements before and during the *Sale*. You should be alert to this possibility of changes and ask if there have been any.

7. BUYER'S PREMIUM AND OTHER CHARGES PAYABLE BY THE BUYER

Under the *Buyer's Agreement*, a premium (the *Buyer's Premium*) is payable to us by the *Buyer* in accordance with the terms of the *Buyer's Agreement* and at rates set out below, calculated by reference to the *Hammer Price* and payable in addition to it. Storage charges and *Expenses* are also payable by the *Buyer* as set out in the *Buyer's Agreement*. All the sums payable to us by the *Buyer* are subject to VAT. For this *Sale* the following rates of *Buyer's Premium* will be payable by *Buyers* of *Lots*:

25% up to £50,000 of the *Hammer Price*
20% from £50,001 to £1,000,000 of the *Hammer Price*
12% from £1,000,001 of the *Hammer Price*

On certain *Lots*, which will be marked “AR” in the *Catalogue* and which are sold for a *Hammer Price* of €1,000 or greater (converted into the currency of the *Sale* using the European Central Bank Reference rate prevailing on the date of the *Sale*), the *Additional Premium* will be payable to us by the *Buyer* to cover our *Expenses* relating to the payment of royalties under the Artists Resale Right Regulations 2006. The *Additional Premium* will be a percentage of the amount of the *Hammer Price* calculated in accordance with the table below, and shall not exceed €12,500 (converted into the currency of the *Sale* using the European Central Bank Reference rate prevailing on the date of the *Sale*).

<i>Hammer Price</i>	Percentage amount
From €0 to €50,000	4%
From €50,000.01 to €200,000	3%
From €200,000.01 to €350,000	1%
From €350,000.01 to €500,000	0.5%
Exceeding €500,000	0.25%

8. VAT

The prevailing rate of VAT at the time of going to press is 20%, but this is subject to government change and the rate payable will be the rate in force on the date of the *Sale*.

The following symbols are used to denote that VAT is due on the *Hammer Price* and *Buyer's Premium*:

- † VAT at the prevailing rate on *Hammer Price* and *Buyer's Premium*
- Ω VAT on imported items at the prevailing rate on *Hammer Price* and *Buyer's Premium*
- * VAT on imported items at a preferential rate of 5% on *Hammer Price* and the prevailing rate on *Buyer's Premium*

- G Gold bullion exempt from VAT on the *Hammer Price* and subject to VAT at the prevailing rate on the *Buyer's Premium*
- Zero rated for VAT, no VAT will be added to the *Hammer Price* or the *Buyer's Premium*
- α *Buyers* from within the EU: VAT is payable at the prevailing rate on just the *Buyer's Premium* (NOT the *Hammer Price*). *Buyers* from outside the EU: VAT is payable at the prevailing rate on both *Hammer Price* and *Buyer's Premium*. If a *Buyer*, having registered under a non-EU address, decides that the item is not to be exported from the EU, then he should advise *Bonhams* immediately.

In all other instances no VAT will be charged on the *Hammer Price*, but VAT at the prevailing rate will be added to *Buyer's Premium* which will be invoiced on a VAT inclusive basis.

9. PAYMENT

It is of critical importance that you ensure that you have readily available funds to pay the *Purchase Price* and the *Buyer's Premium* (plus VAT and any other charges and *Expenses* to us) in full before making a bid for the *Lot*. If you are a successful *Bidder*, payment will be due to us by 4.30 pm on the second working day after the *Sale* so that all sums are cleared by the eighth working day after the *Sale*. Unless agreed by us in advance payments made by anyone other than the registered *Buyer* will not be accepted. Payment will have to be by one of the following methods (all cheques should be made payable to Bonhams 1793 Limited). *Bonhams* reserves the right to vary the terms of payment at any time.

Sterling personal cheque drawn on a UK branch of a bank or building society: all cheques must be cleared before you can collect your purchases;

Bankers draft/building society cheque: if you can provide suitable proof of identity and we are satisfied as to the genuineness of the draft or cheque, and that the funds have originated from your own account, we will allow you to collect your purchases immediately;

Cash: you may pay for *Lots* purchased by you at this *Sale* with notes, coins or travellers cheques in the currency in which the *Sale* is conducted (but not any other currency) provided that the total amount payable by you in respect of all *Lots* purchased by you at the *Sale* does not exceed £3,000, or the equivalent in the currency in which the *Sale* is conducted, at the time when payment is made. If the amount payable by you for *Lots* exceeds that sum, the balance must be paid otherwise than in coins, notes or travellers cheques;

Bank transfer: you may electronically transfer funds to our *Trust Account*. If you do so, please quote your paddle number and invoice number as the reference. Our *Trust Account* details are as follows:

Bank: National Westminster Bank Plc
Address: PO Box 4RY
250 Regent Street
London W1A 4RY
Account Name: Bonhams 1793 Limited Trust Account
Account Number: 25563009
Sort Code: 56-00-27
IBAN Number: GB 33 NWBK 560027 25563009

If paying by bank transfer, the amount received after the deduction of any bank fees and/or conversion of the currency of payment to pounds sterling must not be less than the sterling amount payable, as set out on the invoice.

Debit cards: there is no additional charge for purchases made with personal debit cards, issued by a UK bank. Debit cards issued by an overseas bank, deferred and company debit cards and all credit cards will be subject to a 2% surcharge;

Credit cards: Visa and Mastercard only. Please note there is a 2% surcharge on the total invoice value when payments are made using credit cards. It may be advisable to notify your card provider of your intended purchase in advance to reduce delays caused by us having to seek authority when you come to pay. If you have any questions with regard to payment, please contact our Customer Services Department.

China UnionPay (CUP) debit cards: No surcharge for using CUP debit cards will apply on the first £100,000 invoiced to a Buyer in any Sale; a 2% surcharge will be made on the balance over £100,000.

10. COLLECTION AND STORAGE

The *Buyer* of a *Lot* will not be allowed to collect it until payment in full and in cleared funds has been made (unless we have made a special arrangement with the *Buyer*). For collection and removal of purchased *Lots*, please refer to *Sale Information* at the front of the *Catalogue*. Our offices are open 9.00am – 5pm Monday to Friday. Details relating to the collection of a *Lot*, the storage of a *Lot* and our *Storage Contractor* after the *Sale* are set out in the *Catalogue*.

11. SHIPPING

Please refer all enquiries to our shipping department on:
Tel: +44 (0)20 8963 2850/2852 Fax: +44 (0)20 8963 2805
Email: shipping@bonhams.com

12. EXPORT/TRADE RESTRICTIONS

It is your sole responsibility to comply with all export and import regulations relating to your purchases and also to obtain any relevant export and/or import licence(s). Export licences are issued by Arts Council England and application forms can be obtained from its Export Licensing Unit. The detailed provisions of the export licencing arrangements can be found on the ACE website <http://www.artscouncil.org.uk/what-we-do/supporting-museums/cultural-property/export-controls/export-licensing/> or by phoning ACE on +44 (0)20 7973 5188. The need for import licences varies from country to country and you should acquaint yourself with all relevant local requirements and provisions. The refusal of any import or export licence(s) or any delay in obtaining such licence(s) shall not permit the rescission of any *Sale* nor allow any delay in making full payment for the *Lot*. Generally, please contact our shipping department before the *Sale* if you require assistance in relation to export regulations.

13. CITES REGULATIONS

Please be aware that all *Lots* marked with the symbol Y are subject to CITES regulations when exporting these items outside the EU. These regulations may be found at <http://www.defra.gov.uk/ahvla-en/imports-exports/cites/> or may be requested from:

Animal Health and Veterinary Laboratories Agency (AHVLA)
Wildlife Licensing
Floor 1, Zone 17, Temple Quay House
2 The Square, Temple Quay
BRISTOL BS1 6EB
Tel: +44 (0) 117 372 8774

14. THE SELLERS AND/OR BONHAMS' LIABILITY

Other than any liability of the *Seller* to the *Buyer* of a *Lot* under the *Contract for Sale*, neither we nor the *Seller* are liable (whether in negligence or otherwise) for any error or misdescription or omission in any *Description* of a *Lot* or any *Estimate* in respect of it, whether contained in the *Catalogue* or otherwise, whether given orally or in writing and whether given before or during the *Sale*. Neither we nor the *Seller* will be liable for any loss of *Business*, profits, revenue or income, or for loss of reputation, or for disruption to *Business* or wasted time on the part of management or staff, or for indirect losses or consequential damages of any kind, irrespective in any case of the nature, volume or source of the loss or damage alleged to be suffered, and irrespective of whether the said loss or damage is caused by or claimed in respect of any negligence, other tort, breach of contract (if any) or statutory duty, restitutionary claim or otherwise. In any circumstances where we and/or the *Seller* are liable in relation to any *Lot* or

any *Description* or *Estimate* made of any *Lot*, or the conduct of any *Sale* in relation to any *Lot*, whether in damages, for an indemnity or contribution, or for a restitutionary remedy or otherwise, our and/or the *Seller's* liability (combined, if both we and the *Seller* are liable) will be limited to payment of a sum which will not exceed by way of maximum the amount of the *Purchase Price* of the *Lot* irrespective in any case of the nature, volume or source of any loss or damage alleged to be suffered or sum claimed as due, and irrespective of whether the liability arises from any negligence, other tort, breach of contract (if any) or statutory duty or otherwise. Nothing set out above will be construed as excluding or restricting (whether directly or indirectly) our liability or excluding or restricting any person's rights or remedies in respect of (i) fraud, or (ii) death or personal injury caused by our negligence (or by the negligence of any person under our control or for whom we are legally responsible), or (iii) acts or omissions for which we are liable under the Occupiers Liability Act 1957, or (iv) any other liability to the extent the same may not be excluded or restricted as a matter of law or (v) our undertakings under paragraphs 9 (in relation to specialist *Stamp* or *Book Sales* only) and 10 of the *Buyer's Agreement*. The same applies in respect of the *Seller*, as if references to us in this paragraph were substituted with references to the *Seller*.

15. BOOKS

As stated above, all *Lots* are sold on an "as is" basis, subject to all faults, imperfections and errors of *Description* save as set out below. However, you will be entitled to reject a *Book* in the circumstances set out in paragraph 11 of the *Buyers Agreement*. Please note that *Lots* comprising printed *Books*, unframed maps and bound manuscripts are not liable to VAT on the *Buyer's Premium*.

16. CLOCKS AND WATCHES

All *Lots* are sold "as is", and the absence of any reference to the condition of a clock or watch does not imply that the *Lot* is in good condition and without defects, repairs or restorations. Most clocks and watches have been repaired in the course of their normal lifetime and may now incorporate parts not original to them. Furthermore, *Bonhams* makes no representation or warranty that any clock or watch is in working order. As clocks and watches often contain fine and complex mechanisms, *Bidders* should be aware that a general service, change of battery or further repair work, for which the *Buyer* is solely responsible, may be necessary. *Bidders* should be aware that the importation of watches such as Rolex, Frank Muller and Corum into the United States is highly restricted. These watches may not be shipped to the USA and can only be imported personally.

17. FIREARMS – PROOF, CONDITION AND CERTIFICATION

Proof of Firearms

The term "proof exemption" indicates that a firearm has been examined at a Proof House, but not proved, as either (a) it was deemed of interest and not intended for use, or (b) ammunition was not available. In either case, the firearm must be regarded as unsafe to fire unless subsequently proved. Firearms proved for Black Powder should not be used with smokeless ammunition.

The term "Certificate of Unprovability" indicates that a firearm has been examined at a Proof House and is deemed both unsuitable for proof and use. Reproof is required before any such firearm is to be used.

Guns Sold as Parts

Barrels of guns sold as parts will only be made available for sleeving and measurements once rendered unserviceable according to the Gun Barrel Proof Act of 1968 to 1978 and the Rules of Proof.

Condition of Firearms

Comment in this *Catalogue* is restricted, in general, to exceptional condition and to those defects that might affect the immediate safety of a firearm in normal use. An intending *Bidder* unable to make technical examinations and assessments is recommended to seek advice from a gunmaker or from a modern firearms specialist. All prospective *Bidders* are advised to consult the " of bore and wall-thickness measurements posted in the saleroom and available from the department. *Bidders* should note that guns are stripped only where there is a strong indication of a mechanical malfunction. Stripping is not, otherwise, undertaken. Guns intended for use should be stripped and cleaned beforehand. Hammer guns should have their rebound mechanisms checked before use. The safety mechanisms of all guns must be tested before use. All measurements are approximate.

Original Gun Specifications Derived from Gunmakers

The Sporting Gun Department endeavours to confirm a gun's original specification and date of manufacture with makers who hold their original records.

Licensing Requirements Firearms Act 1968 as amended

Bonhams is constantly reviewing its procedures and would remind you that, in the case of firearms or shotguns subject to certification, to conform with current legislation, *Bonhams* is required to see, as appropriate, your original registered firearms dealer's certificate / shot gun certificate / firearm certificate / museum firearms licence / Section 5 authority or import licence (or details of any exemption from which you may benefit, for instance Crown servant status) for the firearm(s) you have purchased prior to taking full payment of the amount shown on your invoice. Should you not already be in possession of such an authority or exemption, you are required to initially pay a deposit of 95% of the total invoice with the balance of 5% payable on presentation of your valid certificate or licence showing your authority to hold the firearm(s) concerned.

Please be advised that if a successful *Bidder* is then unable to produce the correct paperwork, the *Lot(s)* will be reoffered by *Bonhams* in the next appropriate *Sale*, on standard terms for *Sellers*, and you will be responsible for any loss incurred by *Bonhams* on the original *Sale* to you.

In the case of RFD certificates and Section 5 authorities, we wish to keep an up-to-date copy on file. Please supply us with a Fax or photocopy. It would be helpful if you could send us an updated copy whenever your certificate or authority is renewed or changed.

Lots marked 'S1' and bearing red labels are Section 1 firearms and require a valid British Firearms certificate, RFD Licence or import licence.

Lots marked 'S2' and bearing blue labels are Section 2 firearms and require a valid British Shotgun certificate, RFD licence or import licence.

Lots marked 'S5' and bearing specially marked red labels are Section 5 prohibited firearms and require a valid Section 5 Authority or import licence.

Lots marked with a 'S58' and bearing yellow labels are for obsolete calibres and no licence is required unless ammunition is held.

Unmarked *Lots* require no licence.

Please do not hesitate to contact the Modern Sporting Gun Department should you have any queries.

Taxidermy and Related Items

As a *Seller* of these articles, *Bonhams* undertakes to comply fully with Cites and DEFRA regulations. *Buyers* are advised to inform themselves of all such regulations and should expect the exportation of items to take some time to arrange.

18. FURNITURE

Upholstered Furniture

Whilst we take every care in cataloguing furniture which has been upholstered we offer no *Guarantee* as to the originality of the wood covered by fabric or upholstery.

19. JEWELLERY

~ Ruby and Jadeite

Ruby and jadeite gemstones of Burmese (Myanmar) origin may not be imported into the US. Rubies and jadeite of non-Burmese origin require certification before import into the US and it is the *Buyer's* responsibility to obtain all relevant and required export/import licences, certificates and documentation before shipping. Failure by the *Buyer* to successfully import goods into the US does not constitute grounds for non payment or cancellation of *Sale*. *Bonhams* will not be responsible for any additional costs in this regard howsoever incurred.

Gemstones

Historically many gemstones have been subjected to a variety of treatments to enhance their appearance. Sapphires and rubies are routinely heat treated to improve their colour and clarity, similarly emeralds are frequently treated with oils or resin for the same purpose. Other treatments such as staining, irradiation or coating may have been used on other gemstones. These treatments may be permanent, whilst others may need special care or re-treatment over the years to retain their appearance. *Bidders* should be aware that *Estimates* assume that gemstones may have been subjected to such treatments. A number of laboratories issue certificates that give more detailed *Descriptions* of gemstones. However there may not be consensus between different laboratories on the degrees, or types of treatment for any particular gemstone. In the event that *Bonhams* has been given or has obtained certificates for any *Lot* in the *Sale* these certificates will be disclosed in the *Catalogue*. Although, as a matter of policy, *Bonhams* endeavours to provide certificates from recognised laboratories for certain gemstones, it is not feasible to obtain certificates for each *Lot*. In the event that no certificate is published in the *Catalogue*, *Bidders* should assume that the gemstones may have been treated. Neither *Bonhams* nor the *Seller* accepts any liability for contradictions or differing certificates obtained by *Buyers* on any *Lots* subsequent to the *Sale*.

Estimated Weights

If a stone(s) weight appears within the body of the *Description* in capital letters, the stone(s) has been unmounted and weighed by *Bonhams*. If the weight of the stone(s) is stated to be approximate and does not appear in capital letters, the stone(s) has been assessed by us within its/their settings, and the stated weight is a statement of our opinion only. This information is given as a guide and *Bidders* should satisfy themselves with regard to this information as to its accuracy.

Signatures

1. A diamond brooch, by Kutchinsky

When the maker's name appears in the title, in *Bonhams'* opinion the piece is by that maker.

2. A diamond brooch, signed Kutchinsky

Has a signature that, in *Bonhams'* opinion, is authentic but may contain gemstones that are not original, or the piece may have been altered.

3. A diamond brooch, mounted by Kutchinsky

Has been created by the jeweller, in *Bonhams'* opinion, but using stones or designs supplied by the client.

20. PHOTOGRAPHS

Explanation of Catalogue Terms

- "Bill Brandt": in our opinion a work by the artist.
- "Attributed to Bill Brandt": in our opinion probably a work by the artist, but less certainty to authorship is expressed than in the preceding category.
- "Signed and/or titled and/or dated and/or inscribed": in our opinion the signature and/or title and/or date and/or inscription are in the artist's hand.
- "Signed and/or titled and/or dated and/or inscribed in another hand": in our opinion the signature and/or title and/or date and/or inscription have been added by another hand.

- The date given is that of the image (negative). Where no further date is given, this indicates that the photographic print is vintage (the term "vintage" may also be included in the *Lot Description*). A vintage photograph is one which was made within approximately 5-10 years of the negative. Where a second, later date appears, this refers to the date of printing. Where the exact printing date is not known, but understood to be later, "printed later" will appear in the *Lot Description*.
- Unless otherwise specified, dimensions given are those of the piece of paper on which the image is printed, including any margins. Some photographs may appear in the *Catalogue* without margins illustrated.
- All photographs are sold unframed unless stated in the *Lot Description*.

21. PICTURES

Explanation of Catalogue Terms

The following terms used in the *Catalogue* have the following meanings but are subject to the general provisions relating to *Descriptions* contained in the *Contract for Sale*:

- "Jacopo Bassano": in our opinion a work by the artist. When the artist's forename(s) is not known, a series of asterisks, followed by the surname of the artist, whether preceded by an initial or not, indicates that in our opinion the work is by the artist named;
- "Attributed to Jacopo Bassano": in our opinion probably a work by the artist but less certainty as to authorship is expressed than in the preceding category;
- "Studio/Workshop of Jacopo Bassano": in our opinion a work by an unknown hand in a studio of the artist which may or may not have been executed under the artist's direction;
- "Circle of Jacopo Bassano": in our opinion a work by a hand closely associated with a named artist but not necessarily his pupil;
- "Follower of Jacopo Bassano": in our opinion a work by a painter working in the artist's style, contemporary or nearly contemporary, but not necessarily his pupil;
- "Manner of Jacopo Bassano": in our opinion a work in the style of the artist and of a later date;
- "After Jacopo Bassano": in our opinion, a copy of a known work of the artist;
- "Signed and/or dated and/or inscribed": in our opinion the signature and/or date and/or inscription are from the hand of the artist;
- "Bears a signature and/or date and/or inscription": in our opinion the signature and/or date and/or inscription have been added by another hand.

22. PORCELAIN AND GLASS

Damage and Restoration

For your guidance, in our *Catalogues* we detail, as far as practicable, recorded all significant defects, cracks and restoration. Such practicable *Descriptions* of damage cannot be definitive, and in providing *Condition Reports*, we cannot *Guarantee* that there are no other defects present which have not been mentioned. *Bidders* should satisfy themselves by inspection, as to the condition of each *Lot*. Please see the *Contract for Sale* printed in this *Catalogue*. Because of the difficulty in determining whether an item of glass has been repolished, in our *Catalogues* reference is only made to visible chips and cracks. No mention is made of repolishing, severe or otherwise.

23. VEHICLES

The Veteran Car Club of Great Britain

Dating Plates and Certificates

When mention is made of a Veteran Car Club Dating Plate or Dating Certificate in this *Catalogue*, it should be borne in mind that the Veteran Car Club of Great Britain using the services of Veteran Car Company Ltd, does from time to time, review cars already dated and, in some instances, where fresh evidence becomes available, the review can result in an alteration of date. Whilst the Club and Veteran Car Company Ltd make every effort to ensure accuracy, the date shown on the Dating Plate or Dating Certificate cannot be guaranteed as correct and intending purchasers should make their own enquiries as to the date of the car.

24. WINE

Lots which are lying under Bond and those liable to VAT may not be available for immediate collection.

Examining the wines

It is occasionally possible to provide a pre-*Sale* tasting for larger parcels (as defined below). This is generally limited to more recent and everyday drinking wines. Please contact the department for details.

It is not our policy to inspect every unopened case. In the case of wines older than 20 years the boxes will usually have been opened and levels and appearance noted in the *Catalogue* where necessary. You should make proper allowance for variations in ullage levels and conditions of corks, capsules and labels.

Corks and Ullages

Ullage refers to the space between the base of the cork and the wine. Ullage levels for Bordeaux shaped bottles are only normally noted when below the neck and for Burgundy, Alsace, German and Cognac shaped bottles when greater than 4 centimetres (cm). Acceptable ullage levels increase with age; generally acceptable levels are as follows:

Under 15 years old – into neck or less than 4cm
15 to 30 years old – top shoulder (ts) or up to 5cm
Over 30 years old – high shoulder (hs) or up to 6cm

It should be noted that ullages may change between publication of the *Catalogue* and the *Sale* and that corks may fail as a result of transporting the wine. We will only accept responsibility for *Descriptions* of condition at the time of publication of the *Catalogue* and cannot accept responsibility for any loss resulting from failure of corks either before or after this point.

Options to buy parcels

A parcel is a number of *Lots* of identical size of the same wine, bottle size and *Description*. The *Buyer* of any of these *Lots* has the option to accept some or all of the remaining *Lots* in the parcel at the same price, although such options will be at the *Auctioneer's* sole discretion. Absentee *Bidders* are, therefore, advised to bid on the first *Lot* in a parcel.

Wines in Bond

Wines lying in Bond are marked Δ and VAT is payable by the purchaser, at the standard rate, on the *Hammer Price*, unless the wines are to remain under Bond. *Buyers* requiring their wine to remain in Bond must notify *Bonhams* at the time of the *Sale*. The *Buyer* is then himself responsible for all duty, clearance VAT and other charges that may be payable thereon. All such *Lots* must be transferred or collected within two weeks of the *Sale*.

Buyers outside the UK must be aware that any forwarding agent appointed to export their purchases must have a movement certificate for *Lots* to be released under Bond.

Bottling Details and Case Terms

The following terms used in the *Catalogue* have the following meanings:

CB – Château bottled
DB – Domaine bottled
EstB – Estate bottled
BB – Bordeaux bottled
BE – Belgian bottled
FB – French bottled
GB – German bottled
OB – Oporto bottled
UK – United Kingdom bottled
owc – original wooden case
iwc – individual wooden case
oc – original carton

SYMBOLS

THE FOLLOWING SYMBOLS ARE USED TO DENOTE

- Y Subject to CITES regulations when exporting these items outside the EU, see clause 13.
- W Objects displayed with a w will be located in the Bonhams Warehouse and will only be available for collection from this location.
- ≈ Please note that as a result of recent legislation ruby and jadeite gem stones of Burmese (Myanmar) origin may not be imported into the US. Rubies and jadeite of non-Burmese origin require certification before import into the US.
- Δ Wines lying in Bond.
- AR An Additional Premium will be payable to us by the Buyer to cover our Expenses relating to payment of royalties under the Artists Resale Right Regulations 2006. See clause 7 for details.
- The Seller has been guaranteed a minimum price for the Lot, either by Bonhams or a third party. This may take the form of an irrevocable bid by a third party, who may make a financial gain on a successful Sale or a financial loss if unsuccessful.
- ▲ Bonhams owns the Lot either wholly or partially or may otherwise have an economic interest.
- Φ This lot contains or is made of ivory. The United States Government has banned the import of ivory into the USA.

•, †, *, G, Ω, α see clause 8, VAT, for details.

DATA PROTECTION – USE OF YOUR INFORMATION

Where we obtain any personal information about you, we shall only use it in accordance with the terms of our Privacy Policy (subject to any additional specific consent(s) you may have given at the time your information was disclosed). A copy of our Privacy Policy can be found on our Website www.bonhams.com or requested by post from Customer Services Department, 101 New Bond Street, London, W1S 1SR or by email from info@bonhams.com

APPENDIX 1

CONTRACT FOR SALE

IMPORTANT: These terms may be changed in advance of the Sale of the Lot to you, by the setting out of different terms in the Catalogue for the Sale and/or by placing an insert in the Catalogue and/or by notices at the Sale venue and/or by oral announcements before and during the Sale at the Sale venue. You should be alert to this possibility of changes and ask in advance of bidding if there have been any.

Under this contract the Seller's liability in respect of the quality of the Lot, its fitness for any purpose and its conformity with any Description is limited. You are strongly advised to examine the Lot for yourself and/or obtain an independent examination of it before you buy it.

1 THE CONTRACT

- 1.1 These terms govern the Contract for Sale of the Lot by the Seller to the Buyer.
- 1.2 The Definitions and Glossary contained in Appendix 3 in the Catalogue are incorporated into this Contract for Sale and a separate copy can also be provided by Bonhams on request. Where words and phrases are used which are in the List of Definitions, they are printed in italics.
- 1.3 The Seller sells the Lot as the principal to the Contract for Sale, such contract being made between the Seller and you through Bonhams which acts in the sole capacity as the Seller's agent and not as an additional principal. However, if the Catalogue states that Bonhams sells the Lot as principal, or such a statement is made by an announcement by the Auctioneer, or by a notice at the Sale, or an insert in the Catalogue, then Bonhams is the Seller for the purposes of this agreement.
- 1.4 The contract is made on the fall of the Auctioneer's hammer in respect of the Lot when it is knocked down to you.

2 SELLER'S UNDERTAKINGS

- 2.1 The Seller undertakes to you that:
 - 2.1.1 the Seller is the owner of the Lot or is duly authorised to sell the Lot by the owner;
 - 2.1.2 save as disclosed in the Entry for the Lot in the Catalogue, the Seller sells the Lot with full title guarantee or, where the Seller is an executor, trustee, liquidator, receiver or administrator, with whatever right, title or interest he may have in the Lot;
 - 2.1.3 except where the Sale is by an executor, trustee, liquidator, receiver or administrator the Seller is both legally entitled to sell the Lot, and legally capable of conferring on you quiet possession of the Lot and that the Sale conforms in every respect with the terms implied by the Sale of Goods Act 1979, Sections 12(1) and 12(2) (see the Definitions and Glossary);
 - 2.1.4 the Seller has complied with all requirements, legal or otherwise, relating to any export or import of the Lot, and all duties and taxes in respect of the export or import of the Lot have (unless stated to the contrary in the Catalogue or announced by the Auctioneer) been paid and, so far as the Seller is aware, all third parties have complied with such requirements in the past;
 - 2.1.5 subject to any alterations expressly identified as such made by announcement or notice at the Sale venue or by the Notice to Bidders or by an insert in the Catalogue, the Lot corresponds with the Contractual Description of the Lot, being that part of the Entry about the Lot in the Catalogue which is in bold letters and (except for colour) with any photograph of the Lot in the Catalogue and the contents of any Condition Report which has been provided to the Buyer.

3 DESCRIPTIONS OF THE LOT

- 3.1 Paragraph 2.1.5 sets out what is the Contractual Description of the Lot. In particular, the Lot is not sold as corresponding with that part of the Entry in the Catalogue which is not printed in bold letters, which merely sets out (on the Seller's behalf) Bonhams' opinion about the Lot and which is not part of the Contractual Description upon which the Lot is sold. Any statement or representation other than that part of the Entry referred to in paragraph 2.1.5 (together with any express alteration to it as referred to in paragraph 2.1.5), including any Description or Estimate, whether made orally or in writing, including in the Catalogue or on Bonhams' Website, or by conduct, or otherwise, and whether by or on behalf of the Seller or Bonhams and whether made prior to or during the Sale, is not part of the Contractual Description upon which the Lot is sold.
- 3.2 Except as provided in paragraph 2.1.5, the Seller does not make or give and does not agree to make or give any contractual promise, undertaking, obligation, guarantee, warranty, or representation of fact, or undertake any duty of care, in relation to any Description of the Lot or any Estimate in relation to it, nor of the accuracy or completeness of any Description or Estimate which may have been made by or on behalf of the Seller including by Bonhams. No such Description or Estimate is incorporated into this Contract for Sale.

4 FITNESS FOR PURPOSE AND SATISFACTORY QUALITY

- 4.1 The Seller does not make and does not agree to make any contractual promise, undertaking, obligation, guarantee, warranty, or representation of fact in relation to the satisfactory quality of the Lot or its fitness for any purpose.

- 4.2 The Seller will not be liable for any breach of any undertaking, whether implied by the Sale of Goods Act 1979 or otherwise, as to the satisfactory quality of the Lot or its fitness for any purpose.

5 RISK, PROPERTY AND TITLE

- 5.1 Risk in the Lot passes to you when it is knocked down to you on the fall of the Auctioneer's hammer in respect of the Lot. The Seller will not be responsible thereafter for the Lot prior to you collecting it from Bonhams or the Storage Contractor, with whom you have separate contract(s) as Buyer. You will indemnify the Seller and keep the Seller fully indemnified from and against all claims, proceedings, costs, expenses and losses arising in respect of any injury, loss and damage caused to the Lot after the fall of the Auctioneer's hammer until you obtain full title to it.
- 5.2 Title to the Lot remains in and is retained by the Seller until the Purchase Price and all other sums payable by you to Bonhams in relation to the Lot have been paid in full to, and received in cleared funds by, Bonhams.

6 PAYMENT

- 6.1 Your obligation to pay the Purchase Price arises when the Lot is knocked down to you on the fall of the Auctioneer's hammer in respect of the Lot.
- 6.2 Time will be of the essence in relation to payment of the Purchase Price and all other sums payable by you to Bonhams. Unless agreed in writing with you by Bonhams on the Seller's behalf (in which case you must comply with the terms of that agreement), all such sums must be paid to Bonhams by you in the currency in which the Sale was conducted by not later than 4.30pm on the second working day following the Sale and you must ensure that the funds are cleared by the seventh working day after the Sale. Payment must be made to Bonhams by one of the methods stated in the Notice to Bidders unless otherwise agreed with you in writing by Bonhams. If you do not pay any sums due in accordance with this paragraph, the Seller will have the rights set out in paragraph 8 below.

7 COLLECTION OF THE LOT

- 7.1 Unless otherwise agreed in writing with you by Bonhams, the Lot will be released to you or to your order only when Bonhams has received cleared funds to the amount of the full Purchase Price and all other sums owed by you to the Seller and to Bonhams.
- 7.2 The Seller is entitled to withhold possession from you of any other Lot he has sold to you at the same or at any other Sale and whether currently in Bonhams' possession or not until payment in full and in cleared funds of the Purchase Price and all other sums due to the Seller and/or Bonhams in respect of the Lot.
- 7.3 You will collect and remove the Lot at your own expense from Bonhams' custody and/ or control or from the Storage Contractor's custody in accordance with Bonhams' instructions or requirements.
- 7.4 You will be wholly responsible for packing, handling and transport of the Lot on collection and for complying with all import or export regulations in connection with the Lot.
- 7.5 You will be wholly responsible for any removal, storage or other charges or Expenses incurred by the Seller if you do not remove the Lot in accordance with this paragraph 7 and will indemnify the Seller against all charges, costs, including any legal costs and fees, Expenses and losses suffered by the Seller by reason of your failure to remove the Lot including any charges due under any Storage Contract. All such sums due to the Seller will be payable on demand.

8	FAILURE TO PAY FOR THE LOT	9	THE SELLER'S LIABILITY	10.3	If either party to the <i>Contract for Sale</i> is prevented from performing that party's respective obligations under the <i>Contract for Sale</i> by circumstances beyond its reasonable control or if performance of its obligations would by reason of such circumstances give rise to a significantly increased financial cost to it, that party will not, for so long as such circumstances prevail, be required to perform such obligations. This paragraph does not apply to the obligations imposed on you by paragraph 6.
8.1	If the <i>Purchase Price</i> for a <i>Lot</i> is not paid to <i>Bonhams</i> in full in accordance with the <i>Contract for Sale</i> the <i>Seller</i> will be entitled, with the prior written agreement of <i>Bonhams</i> but without further notice to you, to exercise one or more of the following rights (whether through <i>Bonhams</i> or otherwise):	9.1	The <i>Seller</i> will not be liable for any injury, loss or damage caused by the <i>Lot</i> after the fall of the <i>Auctioneer's</i> hammer in respect of the <i>Lot</i> .	10.4	Any notice or other communication to be given under the <i>Contract for Sale</i> must be in writing and may be delivered by hand or sent by first class post or air mail or fax transmission, if to the <i>Seller</i> , addressed <i>c/o Bonhams</i> at its address or fax number in the <i>Catalogue</i> (marked for the attention of the Company Secretary), and if to you to the address or fax number of the <i>Buyer</i> given in the <i>Bidding Form</i> (unless notice of any change of address is given in writing). It is the responsibility of the sender of the notice or communication to ensure that it is received in a legible form within any applicable time period.
8.1.1	to terminate immediately the <i>Contract for Sale</i> of the <i>Lot</i> for your breach of contract;	9.2	Subject to paragraph 9.3 below, except for breach of the express undertaking provided in paragraph 2.1.5, the <i>Seller</i> will not be liable for any breach of any term that the <i>Lot</i> will correspond with any <i>Description</i> applied to it by or on behalf of the <i>Seller</i> , whether implied by the Sale of Goods Act 1979 or otherwise.	10.5	If any term or any part of any term of the <i>Contract for Sale</i> is held to be unenforceable or invalid, such unenforceability or invalidity will not affect the enforceability and validity of the remaining terms or the remainder of the relevant term.
8.1.2	to resell the <i>Lot</i> by auction, private treaty or any other means on giving seven days' written notice to you of the intention to resell;	9.3	Unless the <i>Seller</i> sells the <i>Lot</i> in the course of a <i>Business</i> and the <i>Buyer</i> buys it as a <i>Consumer</i> ,	10.6	References in the <i>Contract for Sale</i> to <i>Bonhams</i> will, where appropriate, include reference to <i>Bonhams'</i> officers, employees and agents.
8.1.3	to retain possession of the <i>Lot</i> ;	9.3.1	the <i>Seller</i> will not be liable (whether in negligence, other tort, breach of contract or statutory duty or in restitution or under the Misrepresentation Act 1967, or in any other way) for any lack of conformity with, or inaccuracy, error, misdescription or omission in any <i>Description</i> of the <i>Lot</i> or any <i>Entry</i> or <i>Estimate</i> in relation to the <i>Lot</i> made by or on behalf of the <i>Seller</i> (whether made in writing, including in the <i>Catalogue</i> , or on the <i>Website</i> , or orally, or by conduct or otherwise) and whether made before or after this agreement or prior to or during the <i>Sale</i> ;	10.7	The headings used in the <i>Contract for Sale</i> are for convenience only and will not affect its interpretation.
8.1.4	to remove and store the <i>Lot</i> at your expense;	9.3.2	the <i>Seller</i> will not be liable for any loss of <i>Business</i> , <i>Business</i> profits or revenue or income or for loss of reputation or for disruption to <i>Business</i> or wasted time on the part of the <i>Buyer</i> or of the <i>Buyer's</i> management or staff or, for any indirect losses or consequential damages of any kind, irrespective in any case of the nature, volume or source of the loss or damage alleged to be suffered, and irrespective of whether the said loss or damage is caused by or claimed in respect of any negligence, other tort, breach of contract, statutory duty, restitutionary claim or otherwise;	10.8	In the <i>Contract for Sale</i> "including" means "including, without limitation".
8.1.5	to take legal proceedings against you for any sum due under the <i>Contract for Sale</i> and/or damages for breach of contract;	9.3.3	in any circumstances where the <i>Seller</i> is liable to you in respect of the <i>Lot</i> , or any act, omission, statement, or representation in respect of it, or this agreement or its performance, and whether in damages, for an indemnity or contribution or for a restitutionary remedy or in any way whatsoever, the <i>Seller's</i> liability will be limited to payment of a sum which will not exceed by way of maximum the amount of the <i>Purchase Price</i> of the <i>Lot</i> irrespective in any case of the nature, volume or source of any loss or damage alleged to be suffered or sum claimed as due, and irrespective of whether the liability arises from any negligence, other tort, breach of contract, statutory duty, bailee's duty, restitutionary claim or otherwise.	10.9	References to the singular will include reference to the plural (and vice versa) and reference to any one gender will include reference to the other genders.
8.1.6	to be paid interest on any monies due (after as well as before judgement or order) at the annual rate of 5% per annum above the base rate of National Westminster Bank Plc from time to time to be calculated on a daily basis from the date upon which such monies become payable until the date of actual payment;	9.4	Nothing set out in paragraphs 9.1 to 9.3 above will be construed as excluding or restricting (whether directly or indirectly) any person's liability or excluding or restricting any person's rights or remedies in respect of (i) fraud, or (ii) death or personal injury caused by the <i>Seller's</i> negligence (or any person under the <i>Seller's</i> control or for whom the <i>Seller</i> is legally responsible), or (iii) acts or omissions for which the <i>Seller</i> is liable under the Occupiers Liability Act 1957, or (iv) any other liability to the extent the same may not be excluded or restricted as a matter of law.	10.10	Reference to a numbered paragraph is to a paragraph of the <i>Contract for Sale</i> .
8.1.7	to repossess the <i>Lot</i> (or any part thereof) which has not become your property, and for this purpose (unless the <i>Buyer</i> buys the <i>Lot</i> as a <i>Consumer</i> from the <i>Seller</i> selling in the course of a <i>Business</i>) you hereby grant an irrevocable licence to the <i>Seller</i> by himself and to his servants or agents to enter upon all or any of your premises (with or without vehicles) during normal <i>Business</i> hours to take possession of the <i>Lot</i> or part thereof;			10.11	Save as expressly provided in paragraph 10.12 nothing in the <i>Contract for Sale</i> confers (or purports to confer) on any person who is not a party to the <i>Contract for Sale</i> any benefit conferred by, or the right to enforce any term of, the <i>Contract for Sale</i> .
8.1.8	to retain possession of any other property sold to you by the <i>Seller</i> at the <i>Sale</i> or any other auction or by private treaty until all sums due under the <i>Contract for Sale</i> shall have been paid in full in cleared funds;			10.12	Where the <i>Contract for Sale</i> confers an immunity from, and/or an exclusion or restriction of, the responsibility and/or liability of the <i>Seller</i> , it will also operate in favour and for the benefit of <i>Bonhams</i> , <i>Bonhams'</i> holding company and the subsidiaries of such holding company and the successors and assigns of <i>Bonhams</i> and of such companies and of any officer, employee and agent of <i>Bonhams</i> and such companies, each of whom will be entitled to rely on the relevant immunity and/or exclusion and/or restriction within and for the purposes of Contracts (Rights of Third Parties) Act 1999, which enables the benefit of a contract to be extended to a person who is not a party to the contract, and generally at law.
8.1.9	to retain possession of, and on three months' written notice to sell, <i>Without Reserve</i> , any of your other property in the possession of the <i>Seller</i> and/or of <i>Bonhams</i> (as bailee for the <i>Seller</i>) for any purpose (including, without limitation, other goods sold to you) and to apply any monies due to you as a result of such <i>Sale</i> in satisfaction or part satisfaction of any amounts owed to the <i>Seller</i> or to <i>Bonhams</i> ; and			11	GOVERNING LAW
8.1.10	so long as such goods remain in the possession of the <i>Seller</i> or <i>Bonhams</i> as its bailee, to rescind the contract for the <i>Sale</i> of any other goods sold to you by the <i>Seller</i> at the <i>Sale</i> or at any other auction or by private treaty and apply any monies received from you in respect of such goods in part or full satisfaction of any amounts owed to the <i>Seller</i> or to <i>Bonhams</i> by you.				All transactions to which the <i>Contract for Sale</i> applies and all connected matters will be governed by and construed in accordance with the laws of that part of the United Kingdom where the <i>Sale</i> takes place and the <i>Seller</i> and you each submit to the exclusive jurisdiction of the courts of that part of the United Kingdom, save that the <i>Seller</i> may bring proceedings against you in any other court of competent jurisdiction to the extent permitted by the laws of the relevant jurisdiction. <i>Bonhams</i> has a complaints procedure in place.
8.2	You agree to indemnify the <i>Seller</i> against all legal and other costs of enforcement, all losses and other <i>Expenses</i> and costs (including any monies payable to <i>Bonhams</i> in order to obtain the release of the <i>Lot</i>) incurred by the <i>Seller</i> (whether or not court proceedings will have been issued) as a result of <i>Bonhams</i> taking steps under this paragraph 8 on a full indemnity basis together with interest thereon (after as well as before judgement or order) at the rate specified in paragraph 8.1.6 from the date upon which the <i>Seller</i> becomes liable to pay the same until payment by you.				
8.3	On any resale of the <i>Lot</i> under paragraph 8.1.2, the <i>Seller</i> will account to you in respect of any balance remaining from any monies received by him or on his behalf in respect of the <i>Lot</i> , after the payment of all sums due to the <i>Seller</i> and to <i>Bonhams</i> , within 28 days of receipt of such monies by him or on his behalf.				
		10	MISCELLANEOUS		
		10.1	You may not assign either the benefit or burden of the <i>Contract for Sale</i> .		
		10.2	The <i>Seller's</i> failure or delay in enforcing or exercising any power or right under the <i>Contract for Sale</i> will not operate or be deemed to operate as a waiver of his rights under it except to the extent of any express waiver given to you in writing. Any such waiver will not affect the <i>Seller's</i> ability subsequently to enforce any right arising under the <i>Contract for Sale</i> .		

APPENDIX 2

BUYER'S AGREEMENT

IMPORTANT: These terms may be changed in advance of the *Sale* of the *Lot* to you, by the setting out of different terms in the *Catalogue* for the *Sale* and/or by placing an insert in the *Catalogue* and/or by notices at the *Sale* venue and/or by oral announcements before and during the *Sale* at the *Sale* venue. You should be alert to this possibility of changes and ask in advance of bidding if there have been any.

1 THE CONTRACT

- 1.1 These terms govern the contract between *Bonhams* personally and the *Buyer*, being the person to whom a *Lot* has been knocked down by the *Auctioneer*.
- 1.2 The Definitions and Glossary contained in Appendix 3 to the *Catalogue* for the *Sale* are incorporated into this agreement and a separate copy can also be provided by us on request. Where words and phrases which are defined in the List of Definitions are used in this agreement, they are printed in italics. Reference is made in this agreement to information printed in the *Notice to Bidders*, printed in the *Catalogue* for the *Sale*, and where such information is referred to it is incorporated into this agreement.
- 1.3 Except as specified in paragraph 4 of the *Notice to Bidders* the *Contract for Sale* of the *Lot* between you and the *Seller* is made on the fall of the *Auctioneer's* hammer in respect of the *Lot*, when it is knocked down to you. At that moment a separate contract is also made between you and *Bonhams* on the terms in this *Buyer's Agreement*.
- 1.4 We act as agents for the *Seller* and are not answerable or personally responsible to you for any breach of contract or other default by the *Seller*, unless *Bonhams* sells the *Lot* as principal.
- 1.5 Our personal obligations to you are governed by this agreement and we agree, subject to the terms below, to the following obligations:
 - 1.5.1 we will, until the date and time specified in the *Notice to Bidders* or otherwise notified to you, store the *Lot* in accordance with paragraph 5;
 - 1.5.2 subject to any power of the *Seller* or us to refuse to release the *Lot* to you, we will release the *Lot* to you in accordance with paragraph 4 once you have paid to us, in cleared funds, everything due to us and the *Seller*;
 - 1.5.3 we will provide guarantees in the terms set out in paragraphs 9 and 10.
- 1.6 We do not make or give and do not agree to make or give any contractual promise, undertaking, obligation, *Guarantee*, warranty, representation of fact in relation to any *Description* of the *Lot* or any *Estimate* in relation to it, nor of the accuracy or completeness of any *Description* or *Estimate* which may have been made by us or on our behalf or by or on behalf of the *Seller* (whether made orally or in writing, including in the *Catalogue* or on *Bonhams' Website*, or by conduct, or otherwise), and whether made before or after this agreement or prior to or during the *Sale*. No such *Description* or *Estimate* is incorporated into this agreement between you and us. Any such *Description* or *Estimate*, if made by us or on our behalf, was (unless *Bonhams* itself sells the *Lot* as principal) made as agent on behalf of the *Seller*.

2 PERFORMANCE OF THE CONTRACT FOR SALE

You undertake to us personally that you will observe and comply with all your obligations and undertakings to the *Seller* under the *Contract for Sale* in respect of the *Lot*.

3 PAYMENT

- 3.1 Unless agreed in writing between you and us or as otherwise set out in the *Notice to Bidders*, you must pay to us by not later than 4.30pm on the second working day following the *Sale*:
 - 3.1.1 the *Purchase Price* for the *Lot*;
 - 3.1.2 a *Buyer's Premium* in accordance with the rates set out in the *Notice to Bidders*, and
 - 3.1.3 if the *Lot* is marked [AR], an *Additional Premium* which is calculated and payable in accordance with the *Notice to Bidders* together with *VAT* on that sum if applicable so that all sums due to us are cleared funds by the seventh working day after the *Sale*.
- 3.2 You must also pay us on demand any *Expenses* payable pursuant to this agreement.
- 3.3 All payments to us must be made in the currency in which the *Sale* was conducted, using, unless otherwise agreed by us in writing, one of the methods of payment set out in the *Notice to Bidders*. Our invoices will only be addressed to the registered *Bidder* unless the *Bidder* is acting as an agent for a named principal and we have approved that arrangement, in which case we will address the invoice to the principal.
- 3.4 Unless otherwise stated in this agreement all sums payable to us will be subject to *VAT* at the appropriate rate and *VAT* will be payable by you on all such sums.
- 3.5 We may deduct and retain for our own benefit from the monies paid by you to us the *Buyer's Premium*, the *Commission* payable by the *Seller* in respect of the *Lot*, any *Expenses* and *VAT* and any interest earned and/or incurred until payment to the *Seller*.
- 3.6 Time will be of the essence in relation to any payment payable to us. If you do not pay the *Purchase Price*, or any other sum due to us in accordance with this paragraph 3, we will have the rights set out in paragraph 7 below.
- 3.7 Where a number of *Lots* have been knocked down to you, any monies we receive from you will be applied firstly pro-rata to pay the *Purchase Price* of each *Lot* and secondly pro-rata to pay all amounts due to *Bonhams*.

4 COLLECTION OF THE LOT

- 4.1 Subject to any power of the *Seller* or us to refuse to release the *Lot* to you, once you have paid to us, in cleared funds, everything due to the *Seller* and to us, we will release the *Lot* to you or as you may direct us in writing. The *Lot* will only be released on production of a buyer collection document, obtained from our cashier's office.
- 4.2 You must collect and remove the *Lot* at your own expense by the date and time specified in the *Notice to Bidders*, or if no date is specified, by 4.30pm on the seventh day after the *Sale*.
- 4.3 For the period referred to in paragraph 4.2, the *Lot* can be collected from the address referred to in the *Notice to Bidders* for collection on the days and times specified in the *Notice to Bidders*. Thereafter, the *Lot* may be removed elsewhere for storage and you must enquire from us as to when and where you can collect it, although this information will usually be set out in the *Notice to Bidders*.

- 4.4 If you have not collected the *Lot* by the date specified in the *Notice to Bidders*, you authorise us, acting as your agent and on your behalf, to enter into a contract (the "*Storage Contract*") with the *Storage Contractor* for the storage of the *Lot* on the then current standard terms and conditions agreed between *Bonhams* and the *Storage Contractor* (copies of which are available on request). If the *Lot* is stored at our premises storage fees at our current daily rates (currently a minimum of £3 plus *VAT* per *Lot* per day) will be payable from the expiry of the period referred to in paragraph 4.2. These storage fees form part of our *Expenses*.

- 4.5 Until you have paid the *Purchase Price* and any *Expenses* in full the *Lot* will either be held by us as agent on behalf of the *Seller* or held by the *Storage Contractor* as agent on behalf of the *Seller* and ourselves on the terms contained in the *Storage Contract*.
- 4.6 You undertake to comply with the terms of any *Storage Contract* and in particular to pay the charges (and all costs of moving the *Lot* into storage) due under any *Storage Contract*. You acknowledge and agree that you will not be able to collect the *Lot* from the *Storage Contractor's* premises until you have paid the *Purchase Price*, any *Expenses* and all charges due under the *Storage Contract*.
- 4.7 You will be wholly responsible for packing, handling and transport of the *Lot* on collection and for complying with all import or export regulations in connection with the *Lot*.
- 4.8 You will be wholly responsible for any removal, storage, or other charges for any *Lot* not removed in accordance with paragraph 4.2, payable at our current rates, and any *Expenses* we incur (including any charges due under the *Storage Contract*), all of which must be paid by you on demand and in any event before any collection of the *Lot* by you or on your behalf.

5 STORING THE LOT

We agree to store the *Lot* until the earlier of your removal of the *Lot* or until the time and date set out in the *Notice to Bidders*, on the Sale Information Page or at the back of the catalogue (or if no date is specified, by 4.30pm on the seventh day after the *Sale*) and, subject to paragraphs 6 and 10, to be responsible as *bailee* to you for damage to or the loss or destruction of the *Lot* (notwithstanding that it is not your property before payment of the *Purchase Price*). If you do not collect the *Lot* before the time and date set out in the *Notice to Bidders* (or if no date is specified, by 4.30pm on the seventh day after the *Sale*) we may remove the *Lot* to another location, the details of which will usually be set out in the relevant section of the *Catalogue*. If you have not paid for the *Lot* in accordance with paragraph 3, and the *Lot* is moved to any third party's premises, the *Lot* will be held by such third party strictly to *Bonhams'* order and we will retain our lien over the *Lot* until we have been paid in full in accordance with paragraph 3.

6 RESPONSIBILITY FOR THE LOT

- 6.1 Only on the payment of the *Purchase Price* to us will title in the *Lot* pass to you. However under the *Contract for Sale*, the risk in the *Lot* passed to you when it was knocked down to you.
- 6.2 You are advised to obtain insurance in respect of the *Lot* as soon as possible after the *Sale*.

7	FAILURE TO PAY OR TO REMOVE THE LOT AND PART PAYMENTS	7.3	If you pay us only part of the sums due to us such payment shall be applied firstly to the <i>Purchase Price</i> of the <i>Lot</i> (or where you have purchased more than one <i>Lot</i> pro-rata towards the <i>Purchase Price</i> of each <i>Lot</i>) and secondly to the <i>Buyer's Premium</i> (or where you have purchased more than one <i>Lot</i> pro-rata to the <i>Buyer's Premium</i> on each <i>Lot</i>) and thirdly to any other sums due to us.	9.3	Paragraph 9 will not apply in respect of a <i>Forgery</i> if:
7.1	If all sums payable to us are not so paid in full at the time they are due and/or the <i>Lot</i> is not removed in accordance with this agreement, we will without further notice to you be entitled to exercise one or more of the following rights (without prejudice to any rights we may exercise on behalf of the <i>Seller</i>):	7.4	We will account to you in respect of any balance we hold remaining from any monies received by us in respect of any <i>Sale</i> of the <i>Lot</i> under our rights under this paragraph 7 after the payment of all sums due to us and/or the <i>Seller</i> within 28 days of receipt by us of all such sums paid to us.	9.3.1	the <i>Entry</i> in relation to the <i>Lot</i> contained in the <i>Catalogue</i> reflected the then accepted general opinion of scholars and experts or fairly indicated that there was a conflict of such opinion or reflected the then current opinion of an expert acknowledged to be a leading expert in the relevant field; or
7.1.1	to terminate this agreement immediately for your breach of contract;			9.3.2	it can be established that the <i>Lot</i> is a <i>Forgery</i> only by means of a process not generally accepted for use until after the date on which the <i>Catalogue</i> was published or by means of a process which it was unreasonable in all the circumstances for us to have employed.
7.1.2	to retain possession of the <i>Lot</i> ;	8	CLAIMS BY OTHER PERSONS IN RESPECT OF THE LOT	9.4	You authorise us to carry out such processes and tests on the <i>Lot</i> as we in our absolute discretion consider necessary to satisfy ourselves that the <i>Lot</i> is or is not a <i>Forgery</i> .
7.1.3	to remove, and/or store the <i>Lot</i> at your expense;	8.1	Whenever it becomes apparent to us that the <i>Lot</i> is the subject of a claim by someone other than you and other than the <i>Seller</i> (or that such a claim can reasonably be expected to be made), we may, at our absolute discretion, deal with the <i>Lot</i> in any manner which appears to us to recognise the legitimate interests of ourselves and the other parties involved and lawfully to protect our position and our legitimate interests. Without prejudice to the generality of the discretion and by way of example, we may:	9.5	If we are satisfied that a <i>Lot</i> is a <i>Forgery</i> we will (as principal) purchase the <i>Lot</i> from you and you will transfer the title to the <i>Lot</i> in question to us, with full title guarantee, free from any liens, charges, encumbrances and adverse claims, in accordance with the provisions of Sections 12(1) and 12(2) of the Sale of Goods Act 1979 and we will pay to you an amount equal to the sum of the <i>Purchase Price</i> , <i>Buyer's Premium</i> , <i>VAT</i> and <i>Expenses</i> paid by you in respect of the <i>Lot</i> .
7.1.4	to take legal proceedings against you for payment of any sums payable to us by you (including the <i>Purchase Price</i>) and/or damages for breach of contract;	8.1.1	retain the <i>Lot</i> to investigate any question raised or reasonably expected by us to be raised in relation to the <i>Lot</i> ; and/or	9.6	The benefit of paragraph 9 is personal to, and incapable of assignment by, you.
7.1.5	to be paid interest on any monies due to us (after as well as before judgement or order) at the annual rate of 5% per annum above the base lending rate of National Westminster Bank Plc from time to time to be calculated on a daily basis from the date upon which such monies become payable until the date of actual payment;	8.1.2	deliver the <i>Lot</i> to a person other than you; and/or	9.7	If you sell or otherwise dispose of your interest in the <i>Lot</i> , all rights and benefits under this paragraph will cease.
7.1.6	to repossess the <i>Lot</i> (or any part thereof) which has not become your property, and for this purpose (unless you buy the <i>Lot</i> as a <i>Consumer</i>) you hereby grant an irrevocable licence to us, by ourselves, our servants or agents, to enter upon all or any of your premises (with or without vehicles) during normal business hours to take possession of any <i>Lot</i> or part thereof;	8.1.3	commence interpleader proceedings or seek any other order of any court, mediator, arbitrator or government body; and/or	9.8	Paragraph 9 does not apply to a <i>Lot</i> made up of or including a Chinese painting or Chinese paintings, a motor vehicle or motor vehicles, a <i>Stamp</i> or <i>Stamps</i> or a <i>Book</i> or <i>Books</i> .
7.1.7	to sell the <i>Lot Without Reserve</i> by auction, private treaty or any other means on giving you three months' written notice of our intention to do so;	8.1.4	require an indemnity and/or security from you in return for pursuing a course of action agreed to by you.	10	OUR LIABILITY
7.1.8	to retain possession of any of your other property in our possession for any purpose (including, without limitation, other goods sold to you or with us for <i>Sale</i>) until all sums due to us have been paid in full;	8.2	The discretion referred to in paragraph 8.1:	10.1	We will not be liable whether in negligence, other tort, breach of contract or statutory duty or in restitution or under the Misrepresentation Act 1967 or in any other way for lack of conformity with or any inaccuracy, error, misdescription or omission in any <i>Description</i> of the <i>Lot</i> or any <i>Entry</i> or <i>Estimate</i> in respect of it, made by us or on our behalf or by or on behalf of the <i>Seller</i> (whether made in writing, including in the <i>Catalogue</i> , or on the <i>Bonhams' Website</i> , or orally, or by conduct or otherwise) and whether made before or after this agreement or prior to or during the <i>Sale</i> .
7.1.9	to apply any monies received from you for any purpose whether at the time of your default or at any time thereafter in payment or part payment of any sums due to us by you under this agreement;	8.2.1	may be exercised at any time during which we have actual or constructive possession of the <i>Lot</i> , or at any time after such possession, where the cessation of such possession has occurred by reason of any decision, order or ruling of any court, mediator, arbitrator or government body; and	10.2	Our duty to you while the <i>Lot</i> is at your risk and/or your property and in our custody and/or control is to exercise reasonable care in relation to it, but we will not be responsible for damage to the <i>Lot</i> or to other persons or things caused by:
7.1.10	on three months' written notice to sell, <i>Without Reserve</i> , any of your other property in our possession or under our control for any purpose (including other goods sold to you or with us for <i>Sale</i>) and to apply any monies due to you as a result of such <i>Sale</i> in payment or part payment of any amounts owed to us;	8.2.2	will not be exercised unless we believe that there exists a serious prospect of a good arguable case in favour of the claim.	10.2.1	handling the <i>Lot</i> if it was affected at the time of <i>Sale</i> to you by woodworm and any damage is caused as a result of it being affected by woodworm; or
7.1.11	refuse to allow you to register for a future <i>Sale</i> or to reject a bid from you at any future <i>Sale</i> or to require you to pay a deposit before any bid is accepted by us at any future <i>Sale</i> in which case we will be entitled to apply such deposit in payment or part payment, as the case may be, of the <i>Purchase Price</i> of any <i>Lot</i> of which you are the <i>Buyer</i> .	9	FORGERIES	10.2.2	changes in atmospheric pressure; nor will we be liable for:
7.2	You agree to indemnify us against all legal and other costs, all losses and all other <i>Expenses</i> (whether or not court proceedings will have been issued) incurred by us as a result of our taking steps under this paragraph 7 on a full indemnity basis together with interest thereon (after as well as before judgement or order) at the rate specified in paragraph 7.1.5 from the date upon which we become liable to pay the same until payment by you.	9.1	We undertake a personal responsibility for any <i>Forgery</i> in accordance with the terms of this paragraph 9.	10.2.3	damage to tension stringed musical instruments; or
		9.2	Paragraph 9 applies only if:	10.2.4	damage to gilded picture frames, plaster picture frames or picture frame glass; and if the <i>Lot</i> is or becomes dangerous, we may dispose of it without notice to you in advance in any manner we think fit and we will be under no liability to you for doing so.
		9.2.1	your name appears as the named person to whom the original invoice was made out by us in respect of the <i>Lot</i> and that invoice has been paid; and		
		9.2.2	you notify us in writing as soon as reasonably practicable after you have become aware that the <i>Lot</i> is or may be a <i>Forgery</i> , and in any event within one year after the <i>Sale</i> , that the <i>Lot</i> is a <i>Forgery</i> ; and		
		9.2.3	within one month after such notification has been given, you return the <i>Lot</i> to us in the same condition as it was at the time of the <i>Sale</i> , accompanied by written evidence that the <i>Lot</i> is a <i>Forgery</i> and details of the <i>Sale</i> and <i>Lot</i> number sufficient to identify the <i>Lot</i> .		

10.3.1 We will not be liable to you for any loss of *Business*, *Business* profits, revenue or income or for loss of *Business* reputation or for disruption to *Business* or wasted time on the part of the *Buyer's* management or staff or, if you are buying the *Lot* in the course of a *Business*, for any indirect losses or consequential damages of any kind, irrespective in any case of the nature, volume or source of the loss or damage alleged to be suffered, and irrespective of whether the said loss or damage is caused by or claimed in respect of any negligence, other tort, breach of contract, statutory duty, bailee's duty, a restitutionary claim or otherwise.

10.3.2 Unless you buy the *Lot* as a *Consumer*, in any circumstances where we are liable to you in respect of a *Lot*, or any act, omission, statement, representation in respect of it, or this agreement or its performance, and whether in damages, for an indemnity or contribution or for a restitutionary remedy or in any way whatsoever, our liability will be limited to payment of a sum which will not exceed by way of maximum the amount of the *Purchase Price* of the *Lot* plus *Buyer's Premium* (less any sum you may be entitled to recover from the *Seller*) irrespective in any case of the nature, volume or source of any loss or damage alleged to be suffered or sum claimed as due, and irrespective of whether the liability arises from negligence, other tort, breach of contract, statutory duty, bailee's duty, a restitutionary claim or otherwise.

You may wish to protect yourself against loss by obtaining insurance.

10.4 Nothing set out above will be construed as excluding or restricting (whether directly or indirectly) any person's liability or excluding or restricting any person's rights or remedies in respect of (i) fraud, or (ii) death or personal injury caused by our negligence (or any person under our control or for whom we are legally responsible), or (iii) acts or omissions for which we are liable under the Occupiers Liability Act 1957, or (iv) any other liability to the extent the same may not be excluded or restricted as a matter of law, or (v) under our undertaking in paragraph 9 of these conditions.

11 BOOKS MISSING TEXT OR ILLUSTRATIONS

Where the *Lot* is made up wholly of a *Book* or *Books* and any *Book* does not contain text or illustrations (in either case referred to as a "non-conforming *Lot*"), we undertake a personal responsibility for such a non-conforming *Lot* in accordance with the terms of this paragraph, if:

the original invoice was made out by us to you in respect of the *Lot* and that invoice has been paid; and

you notify us in writing as soon as reasonably practicable after you have become aware that the *Lot* is or may be a non-conforming *Lot*, and in any event within 20 days after the *Sale* (or such longer period as we may agree in writing) that the *Lot* is a non-conforming *Lot*; and

within 20 days of the date of the relevant *Sale* (or such longer period as we may agree in writing) you return the *Lot* to us in the same condition as it was at the time of the *Sale*, accompanied by written evidence that the *Lot* is a non-conforming *Lot* and details of the *Sale* and *Lot* number sufficient to identify the *Lot*.

but not if:

the *Entry* in the *Catalogue* in respect of the *Lot* indicates that the rights given by this paragraph do not apply to it; or

the *Entry* in the *Catalogue* in respect of the *Lot* reflected the then accepted general opinion of scholars and experts or fairly indicated that there was a conflict of such opinion; or

it can be established that the *Lot* is a non-conforming *Lot* only by means of a process not generally accepted for use until after the date on which the *Catalogue* was published or by means of a process which it was unreasonable in all the circumstances for us to have employed; or

the *Lot* comprises atlases, maps, autographs, manuscripts, extra illustrated books, music or periodical publications; or

the *Lot* was listed in the *Catalogue* under "collections" or "collections and various" or the *Lot* was stated in the *Catalogue* to comprise or contain a collection, issue or *Books* which are undescribed or the missing text or illustrations are referred to or the relevant parts of the *Book* contain blanks, half titles or advertisements.

If we are reasonably satisfied that a *Lot* is a non-conforming *Lot*, we will (as principal) purchase the *Lot* from you and you will transfer the title to the *Lot* in question to us, with full title guarantee, free from any liens, charges, encumbrances and adverse claims and we will pay to you an amount equal to the sum of the *Purchase Price* and *Buyer's Premium* paid by you in respect of the *Lot*.

The benefit of paragraph 10 is personal to, and incapable of assignment by, you and if you sell or otherwise dispose of your interest in the *Lot*, all rights and benefits under this paragraph will cease.

12 MISCELLANEOUS

12.1 You may not assign either the benefit or burden of this agreement.

12.2 Our failure or delay in enforcing or exercising any power or right under this agreement will not operate or be deemed to operate as a waiver of our rights under it except to the extent of any express waiver given to you in writing. Any such waiver will not affect our ability subsequently to enforce any right arising under this agreement.

12.3 If either party to this agreement is prevented from performing that party's respective obligations under this agreement by circumstances beyond its reasonable control or if performance of its obligations would by reason of such circumstances give rise to a significantly increased financial cost to it, that party will not, for so long as such circumstances prevail, be required to perform such obligations. This paragraph does not apply to the obligations imposed on you by paragraph 3.

12.4 Any notice or other communication to be given under this agreement must be in writing and may be delivered by hand or sent by first class post or air mail or fax transmission (if to *Bonhams* marked for the attention of the Company Secretary), to the address or fax number of the relevant party given in the *Contract Form* (unless notice of any change of address is given in writing). It is the responsibility of the sender of the notice or communication to ensure that it is received in a legible form within any applicable time period.

12.5 If any term or any part of any term of this agreement is held to be unenforceable or invalid, such unenforceability or invalidity will not affect the enforceability and validity of the remaining terms or the remainder of the relevant term.

12.6 References in this agreement to *Bonhams* will, where appropriate, include reference to *Bonhams'* officers, employees and agents.

12.7 The headings used in this agreement are for convenience only and will not affect its interpretation.

12.8 In this agreement "including" means "including, without limitation".

12.9 References to the singular will include reference to the plural (and vice versa) and reference to any one gender will include reference to the other genders.

12.10 Reference to a numbered paragraph is to a paragraph of this agreement.

12.11 Save as expressly provided in paragraph 12.12 nothing in this agreement confers (or purports to confer) on any person who is not a party to this agreement any benefit conferred by, or the right to enforce any term of, this agreement.

12.12 Where this agreement confers an immunity from, and/or an exclusion or restriction of, the responsibility and/or liability of *Bonhams*, it will also operate in favour and for the benefit of *Bonhams'* holding company and the subsidiaries of such holding company and the successors and assigns of *Bonhams* and of such companies and of any officer, employee and agent of *Bonhams* and such companies, each of whom will be entitled to rely on the relevant immunity and/or exclusion and/or restriction within and for the purposes of Contracts (Rights of Third Parties) Act 1999, which enables the benefit of a contract to be extended to a person who is not a party to the contract, and generally at law.

13 GOVERNING LAW

All transactions to which this agreement applies and all connected matters will be governed by and construed in accordance with the laws of that part of the United Kingdom where the *Sale* takes (or is to take) place and we and you each submit to the exclusive jurisdiction of the courts of that part of the United Kingdom, save that we may bring proceedings against you in any other court of competent jurisdiction to the extent permitted by the laws of the relevant jurisdiction. *Bonhams* has a complaints procedure in place.

DATA PROTECTION – USE OF YOUR INFORMATION

Where we obtain any personal information about you, we shall only use it in accordance with the terms of our Privacy Policy (subject to any additional specific consent(s) you may have given at the time your information was disclosed). A copy of our Privacy Policy can be found on our *Website* www.bonhams.com or requested by post from Customer Services Department, 101 New Bond Street, London W1S 1SR, United Kingdom or by email from info@bonhams.com.

APPENDIX 3

DEFINITIONS AND GLOSSARY

Where these Definitions and Glossary are incorporated, the following words and phrases used have (unless the context otherwise requires) the meanings given to them below. The Glossary is to assist you to understand words and phrases which have a specific legal meaning with which you may not be familiar.

LIST OF DEFINITIONS

"**Additional Premium**" a premium, calculated in accordance with the *Notice to Bidders*, to cover *Bonhams'* Expenses relating to the payment of royalties under the Artists Resale Right Regulations 2006 which is payable by the *Buyer* to *Bonhams* on any *Lot* marked [AR] which sells for a *Hammer Price* which together with the *Buyer's Premium* (but excluding any VAT) equals or exceeds 1000 euros (converted into the currency of the *Sale* using the European Central Bank Reference rate prevailing on the date of the *Sale*).
"**Auctioneer**" the representative of *Bonhams* conducting the *Sale*.

"Bidder" a person who has completed a *Bidding Form*.
"Bidding Form" our Bidding Registration Form, our Absentee Bidding Form or our Telephone Bidding Form.

"Bonhams" Bonhams 1793 Limited or its successors or assigns. *Bonhams* is also referred to in the *Buyer's Agreement*, the Conditions of Business and the *Notice to Bidders* by the words "we", "us" and "our".

"Book" a printed *Book* offered for *Sale* at a specialist *Book Sale*.

"Business" includes any trade, *Business* and profession.

"Buyer" the person to whom a *Lot* is knocked down by the *Auctioneer*. The *Buyer* is also referred to in the *Contract for Sale* and the *Buyer's Agreement* by the words "you" and "your".

"Buyer's Agreement" the contract entered into by *Bonhams* with the *Buyer* (see Appendix 2 in the *Catalogue*).

"Buyer's Premium" the sum calculated on the *Hammer Price* at the rates stated in the *Notice to Bidders*.

"Catalogue" the *Catalogue* relating to the relevant *Sale*, including any representation of the *Catalogue* published on our *Website*.

"Commission" the *Commission* payable by the *Seller* to *Bonhams* calculated at the rates stated in the *Contract Form*.

"Condition Report" a report on the physical condition of a *Lot* provided to a *Bidder* or potential *Bidder* by *Bonhams* on behalf of the *Seller*.

"Conditions of Sale" the *Notice to Bidders*, *Contract for Sale*, *Buyer's Agreement* and Definitions and Glossary.

"Consignment Fee" a fee payable to *Bonhams* by the *Seller* calculated at rates set out in the Conditions of Business.

"Consumer" a natural person who is acting for the relevant purpose outside his trade, *Business* or profession.

"Contract Form" the *Contract Form*, or vehicle *Entry* form, as applicable, signed by or on behalf of the *Seller* listing the *Lots* to be offered for *Sale* by *Bonhams*.

"Contract for Sale" the *Sale* contract entered into by the *Seller* with the *Buyer* (see Appendix 1 in the *Catalogue*).

"Contractual Description" the only *Description* of the *Lot* (being that part of the *Entry* about the *Lot* in the *Catalogue* which is in bold letters, any photograph (except for the colour) and the contents of any *Condition Report*) to which the *Seller* undertakes in the *Contract of Sale* the *Lot* corresponds.

"Description" any statement or representation in any way descriptive of the *Lot*, including any statement or representation relating to its authorship, attribution, condition, provenance, authenticity, style, period, age, suitability, quality, origin, value, estimated selling price (including the *Hammer Price*).

"Entry" a written statement in the *Catalogue* identifying the *Lot* and its *Lot* number which may contain a *Description* and illustration(s) relating to the *Lot*.

"Estimate" a statement of our opinion of the range within which the hammer is likely to fall.

"Expenses" charges and *Expenses* paid or payable by *Bonhams* in respect of the *Lot* including legal *Expenses*, banking charges and *Expenses* incurred as a result of an electronic transfer of money, charges and *Expenses* for loss and damage cover, insurance, *Catalogue* and other reproductions and illustrations, any customs duties, advertising, packing or shipping costs, reproductions rights' fees, taxes, levies, costs of testing, searches or enquiries, preparation of the *Lot* for *Sale*, storage charges, removal charges, removal charges or costs of collection from the *Seller* as the *Seller's* agents or from a defaulting *Buyer*, plus *VAT* if applicable.

"Forgery" an imitation intended by the maker or any other person to deceive as to authorship, attribution, origin, authenticity, style, date, age, period, provenance, culture, source or composition, which at the date of the *Sale* had a value materially less than it would have had if the *Lot* had not been such an imitation, and which is not stated to be such an imitation in any description of the *Lot*. A *Lot* will not be a *Forgery* by reason of any damage to, and/or restoration and/or modification work (including repainting or over painting) having been carried out on the *Lot*, where that damage, restoration or modification work (as the case may be) does not substantially affect the identity of the *Lot* as one conforming to the *Description* of the *Lot*.

"Guarantee" the obligation undertaken personally by *Bonhams* to the *Buyer* in respect of any *Forgery* and, in the case of specialist *Stamp Sales* and/or specialist *Book Sales*, a *Lot* made up of a *Stamp* or *Stamps* or a *Book* or *Books* as set out in the *Buyer's Agreement*.

"Hammer Price" the price in the currency in which the *Sale* is conducted at which a *Lot* is knocked down by the *Auctioneer*.

"Loss and Damage Warranty" means the warranty described in paragraph 8.2 of the Conditions of Business.

"Loss and Damage Warranty Fee" means the fee described in paragraph 8.2.3 of the Conditions of Business.

"Lot" any item consigned to *Bonhams* with a view to its *Sale* at auction or by private treaty (and reference to any *Lot* will include, unless the context otherwise requires, reference to individual items comprised in a group of two or more items offered for *Sale* as one *Lot*).

"Motoring Catalogue Fee" a fee payable by the *Seller* to *Bonhams* in consideration of the additional work undertaken by *Bonhams* in respect of the cataloguing of motor vehicles and in respect of the promotion of *Sales* of motor vehicles.

"New Bond Street" means *Bonhams'* saleroom at 101 New Bond Street, London W1S 1SR.

"Notional Charges" the amount of *Commission* and *VAT* which would have been payable if the *Lot* had been sold at the *Notional Price*.

"Notional Fee" the sum on which the *Consignment Fee* payable to *Bonhams* by the *Seller* is based and which is calculated according to the formula set out in the Conditions of Business.

"Notional Price" the latest in time of the average of the high and low *Estimates* given by us to you or stated in the *Catalogue* or, if no such *Estimates* have been given or stated, the *Reserve* applicable to the *Lot*.

"Notice to Bidders" the notice printed at the back or front of our *Catalogues*.

"Purchase Price" the aggregate of the *Hammer Price* and *VAT* on the *Hammer Price* (where applicable), the *Buyer's Premium* and *VAT* on the *Buyer's Premium* and any *Expenses*.

"Reserve" the minimum price at which a *Lot* may be sold (whether at auction or by private treaty).

"Sale" the auction *Sale* at which a *Lot* is to be offered for *Sale* by *Bonhams*.

"Sale Proceeds" the net amount due to the *Seller* from the *Sale* of a *Lot*, being the *Hammer Price* less the *Commission*, any *VAT* chargeable thereon, *Expenses* and any other amount due to us in whatever capacity and howsoever arising.

"Seller" the person who offers the *Lot* for *Sale* named on the *Contract Form*. Where the person so named identifies on the form another person as acting as his agent, or where the person named on the *Contract Form* acts as an agent for a principal (whether such agency is disclosed to *Bonhams* or not), **"Seller"** includes both the agent and the principal who shall be jointly and severally liable as such. The *Seller* is also referred to in the Conditions of Business by the words "you" and "your".
"Specialist Examination" a visual examination of a *Lot* by a specialist on the *Lot*.

"Stamp" means a postage *Stamp* offered for *Sale* at a Specialist *Stamp Sale*.

"Standard Examination" a visual examination of a *Lot* by a non-specialist member of *Bonhams'* staff.

"Storage Contract" means the contract described in paragraph 8.3.3 of the Conditions of Business or paragraph 4.4 of the *Buyer's Agreement* (as appropriate).

"Storage Contractor" means the company identified as such in the *Catalogue*.

"Terrorism" means any act or threatened act of terrorism, whether any person is acting alone or on behalf of or in connection with any organisation(s) and/or government(s), committed for political, religious or ideological or similar purposes including, but not limited to, the intention to influence any government and/or put the public or any section of the public into fear.

"Trust Account" the bank account of *Bonhams* into which all sums received in respect of the *Purchase Price* of any *Lot* will be paid, such account to be a distinct and separate account to *Bonhams'* normal business bank account.

"VAT" value added tax at the prevailing rate at the date of the *Sale* in the United Kingdom.

"Website" *Bonhams Website* at www.bonhams.com

"Withdrawal Notice" the *Seller's* written notice to *Bonhams* revoking *Bonhams'* instructions to sell a *Lot*.

"Without Reserve" where there is no minimum price at which a *Lot* may be sold (whether at auction or by private treaty).

GLOSSARY

The following expressions have specific legal meanings with which you may not be familiar. The following glossary is intended to give you an understanding of those expressions but is not intended to limit their legal meanings:

"artist's resale right": the right of the creator of a work of art to receive a payment on *Sales* of that work subsequent to the original *Sale* of that work by the creator of it as set out in the Artists Resale Right Regulations 2006.

"bailee": a person to whom goods are entrusted.

"indemnity": an obligation to put the person who has the benefit of the indemnity in the same position in which he would have been, had the circumstances giving rise to the indemnity not arisen and the expression "indemnify" is construed accordingly.

"interpleader proceedings": proceedings in the Courts to determine ownership or rights over a *Lot*.

"knocked down": when a *Lot* is sold to a *Bidder*, indicated by the fall of the hammer at the *Sale*.

"lien": a right for the person who has possession of the *Lot* to retain possession of it.

"risk": the possibility that a *Lot* may be lost, damaged, destroyed, stolen, or deteriorate in condition or value.

"title": the legal and equitable right to the ownership of a *Lot*.

"tort": a legal wrong done to someone to whom the wrong doer has a duty of care.

SALE OF GOODS ACT 1979

The following is an extract from the Sale of Goods Act 1979:

"Section 12 Implied terms about title, etc

- (1) In a contract of sale, other than one to which subsection (3) below applies, there is an implied term on the part of the seller that in the case of a sale he has a right to sell the goods, and in the case of an agreement to sell he will have such a right at the time when the property is to pass.
- (2) In a contract of sale, other than one to which subsection (3) below applies, there is also an implied term that:
 - (a) the goods are free, and will remain free until the time when the property is to pass, from any charge or encumbrance not disclosed or known to the buyer before the contract is made, and
 - (b) the buyer will enjoy quiet possession of the goods except in so far as it may be disturbed by the owner or other person entitled to the benefit of any charge or encumbrance so disclosed or known.
- (3) This subsection applies to a contract of sale in the case of which there appears from the contract or is to be inferred from its circumstances an intention that the seller should transfer only such title as he or a third person may have.
- (4) In a contract to which subsection (3) above applies there is an implied term that all charges or encumbrances known to the seller and not known to the buyer have been disclosed to the buyer before the contract is made.
- (5) In a contract to which subsection (3) above applies there is also an implied term that none of the following will disturb the buyer's quiet possession of the goods, namely:
 - (a) the seller;
 - (b) in a case where the parties to the contract intend that the seller should transfer only such title as a third person may have, that person;
 - (c) anyone claiming through or under the seller or that third person otherwise than under a charge or encumbrance disclosed or known to the buyer before the contract is made.
- (5A) As regards England and Wales and Northern Ireland, the term implied by subsection (1) above is a condition and the terms implied by subsections (2), (4) and (5) above are warranties."

Bonhams Specialist Departments

To e-mail any of the below use the first name dot second name @bonhams.com eg. charles.obrien@bonhams.com

19th Century Paintings

UK
Charles O' Brien
+44 20 7468 8360
U.S.A
Madalina Lazen
+1 212 644 9108

20th Century British Art

Matthew Bradbury
+44 20 7468 8295

Aboriginal Art

Francesca Cavazzini
+61 2 8412 2222

African, Oceanic & Pre-Columbian Art

UK
Philip Keith
+44 2920 727 980
U.S.A
Fredric Backlar
+1 323 436 5416

American Paintings

Alan Fausel
+1 212 644 9039

Antiquities

Madeleine Perridge
+44 20 7468 8226

Antique Arms & Armour

UK
David Williams
+44 20 7393 3807
U.S.A
Paul Carella
+1 415 503 3360

Art Collections, Estates & Valuations

Harvey Cammell
+44 (0) 20 7468 8340

Art Nouveau & Decorative Art & Design

UK
Mark Oliver
+44 20 7393 3856
U.S.A
Frank Maraschiello
+1 212 644 9059

Australian Art

Merryn Schriever
+61 2 8412 2222
Alex Clark
+61 3 8640 4088

Australian Colonial Furniture and Australiana

+1 415 861 7500

Books, Maps & Manuscripts

UK
Matthew Haley
+44 20 7393 3817
U.S.A
Christina Geiger
+1 212 644 9094

British & European Glass

UK
Simon Cottle
+44 20 7468 8383
U.S.A
Suzy Pai
+1 415 503 3343

British & European Porcelain & Pottery

UK
John Sandon
+44 20 7468 8244
U.S.A
Peter Scott
+1 415 503 3326

California & American Paintings

Scot Levitt
+1 323 436 5425

Carpets

UK
Mark Dance
+44 8700 27361
U.S.A.
Hadji Rahimipour
+1 415 503 3392

Chinese & Asian Art

UK
Asaph Hyman
+44 20 7468 5888
U.S.A
Dessa Goddard
+1 415 503 3333
HONG KONG
+852 3607 0010
AUSTRALIA
Yvett Klein
+61 2 8412 2222

Clocks

UK
James Stratton
+44 20 7468 8364
U.S.A
Jonathan Snellenburg
+1 212 461 6530

Coins & Medals

UK
John Millensted
+44 20 7393 3914
U.S.A
Paul Song
+1 323 436 5455

Contemporary Art

UK
Ralph Taylor
+44 20 7447 7403
U.S.A
Jeremy Goldsmith
+1 917 206 1656

Costume & Textiles

Claire Browne
+44 1564 732969

Entertainment Memorabilia

UK
+44 20 7393 3844
U.S.A
Catherine Williamson
+1 323 436 5442

Furniture & Works of Art

UK
Fergus Lyons
+44 20 7468 8221
U.S.A
Jeffrey Smith
+1 415 503 3413

Greek Art

Olympia Pappa
+44 20 7468 8314

Golf Sporting Memorabilia

Kevin Mcgimpsey
+44 1244 353123

Irish Art

Penny Day
+44 20 7468 8366

Impressionist & Modern Art

UK
India Phillips
+44 20 7468 8328
U.S.A
Tanya Wells
+1 917 206 1685

Islamic & Indian Art

Claire Penhallurick
+44 20 7468 8249

Japanese Art

UK
Suzannah Yip
+44 20 7468 8368
U.S.A
Jeff Olson
+1 212 461 6516

Jewellery

UK
Jean Ghika
+44 20 7468 8282
U.S.A
Susan Abeles
+1 212 461 6525
AUSTRALIA
Anellie Manolas
+61 2 8412 2222
HONG KONG
Graeme Thompson
+852 3607 0006

Marine Art

UK
Veronique Scorer
+44 20 7393 3962
U.S.A
Gregg Dietrich
+1 917 206 1697

Mechanical Music

Jon Baddeley
+44 20 7393 3872

Modern, Contemporary & Latin American Art

U.S.A
Alexis Chompaisal
+1 323 436 5469

Modern Design

Gareth Williams
+44 20 7468 5879

Motor Cars

UK
Tim Schofield
+44 20 7468 5804
U.S.A
Mark Osborne
+1 415 503 3353
EUROPE
Philip Kantor
+32 476 879 471

Automobilia

UK
Toby Wilson
+44 8700 273 619
U.S.A
Kurt Forry
+1 415 391 4000

Motorcycles

Ben Walker
+44 8700 273616
Automobilia
Adrian Pipiros
+44 8700 273621

Musical Instruments

Philip Scott
+44 20 7393 3855

Native American Art

Jim Haas
+1 415 503 3294

Natural History

U.S.A
Claudia Florian
+1 323 436 5437

Old Master Pictures

UK
Andrew Mckenzie
+44 20 7468 8261
U.S.A
Mark Fisher
+1 323 436 5488

Orientalist Art

Charles O'Brien
+44 20 7468 8360

Photography

U.S.A
Judith Eurich
+1 415 503 3259

Portrait Miniatures

UK
+44 20 7393 3986

Prints and Multiples

UK
Rupert Worrall
+44 20 7468 8262
U.S.A
Judith Eurich
+1 415 503 3259

Russian Art

UK
Sophie Law
+44 20 7468 8334
U.S.A
Yelena Harbick
+1 212 644 9136

Scientific Instruments

Jon Baddeley
+44 20 7393 3872
U.S.A.
Jonathan Snellenburg
+1 212 461 6530

Scottish Pictures

Chris Brickley
+44 131 240 2297

Silver & Gold Boxes

UK
Michael Moorcroft
+44 20 7468 8241
U.S.A
Aileen Ward
+1 800 223 5463

South African Art

Giles Peppiatt
+44 20 7468 8355

Sporting Guns

Patrick Hawes
+44 20 7393 3815

Toys & Dolls

Leigh Gotch
+44 20 8963 2839

Travel Pictures

Veronique Scorer
+44 20 7393 3962

Urban Art

Gareth Williams
+44 20 7468 5879

Watches & Wristwatches

UK
+44 20 7447 7412
U.S.A.
Jonathan Snellenburg
+1 212 461 6530
HONG KONG
Nick Biebuyck
+852 2918 4321

Whisky

UK
Martin Green
+44 1292 520000
U.S.A
Joseph Hyman
+1 917 206 1661
HONG KONG
Daniel Lam
+852 3607 0004

Wine

UK
Richard Harvey
+44 (0) 20 7468 5811
U.S.A
Doug Davidson
+1 415 503 3353
HONG KONG
Daniel Lam
+852 3607 0004

UNITED KINGDOM

London
101 New Bond Street •
London W1S 1SR
+44 20 7447 7447
+44 20 7447 7400 fax

Montpelier Street •
London SW7 1HH
+44 20 7393 3900
+44 20 7393 3905 fax

South East England

Brighton & Hove
19 Palmeira Square
Hove, East Sussex
BN3 2JN
+44 1273 220 000
+44 1273 220 335 fax

Guildford
Millmead,
Guildford,
Surrey GU2 4BE
+44 1483 504 030
+44 1483 450 205 fax

Isle of Wight
+44 1273 220 000

Representative:
Kent
George Dawes
+44 1483 504 030

West Sussex
+44 (0) 1273 220 000

South West England

Bath
Queen Square House
Charlotte Street
Bath BA1 2LL
+44 1225 788 988
+44 1225 446 675 fax

Cornwall – Truro
36 Lemon Street
Truro
Cornwall
TR1 2NR
+44 1872 250 170
+44 1872 250 179 fax

Exeter
The Lodge
Southernhay West Exeter,
Devon
EX1 1JG
+44 1392 425 264
+44 1392 494 561 fax

Winchester
The Red House
Hyde Street
Winchester
Hants SO23 7DX
+44 1962 862 515
+44 1962 865 166 fax

Tetbury
22a Long Street
Tetbury
Gloucestershire
GL8 8AQ
+44 1666 502 200
+44 1666 505 107 fax

Representatives:
Dorset
Bill Allan
+44 1935 815 271

East Anglia

Bury St. Edmunds
21 Churchgate Street
Bury St Edmunds
Suffolk IP33 1RG
+44 1284 716 190
+44 1284 755 844 fax

Norfolk
The Market Place
Reepham
Norfolk NR10 4JJ
+44 1603 871 443
+44 1603 872 973 fax

Midlands

Knowle
The Old House
Station Road
Knowle, Solihull
West Midlands
B93 0HT
+44 1564 776 151
+44 1564 778 069 fax

Oxford •
Banbury Road
Shipton on Cherwell
Kidlington OX5 1JH
+44 1865 853 640
+44 1865 372 722 fax

Yorkshire & North East England

Leeds
30 Park Square West
Leeds LS1 2PF
+44 113 234 5755
+44 113 244 3910 fax

North West England

Chester
2 St Johns Court,
Vicars Lane,
Chester,
Ch1 1QE
+44 1244 313 936
+44 1244 340 028 fax

Manchester
The Stables
213 Ashley Road
Hale WA15 9TB
+44 161 927 3822
+44 161 927 3824 fax

Channel Islands

Jersey
La Chasse
La Rue de la Vallee
St Mary
Jersey JE3 3DL
+44 1534 722 441
+44 1534 759 354 fax

Representative:
Guernsey
+44 1481 722 448

Scotland

Edinburgh •
22 Queen Street
Edinburgh
EH2 1JX
+44 131 225 2266
+44 131 220 2547 fax

Glasgow
176 St. Vincent Street,
Glasgow
G2 5SG
+44 141 223 8866
+44 141 223 8868 fax

Representatives:
Wine & Spirits
Tom Gilbey
+44 1382 330 256

Wales

Cardiff
7-8 Park Place,
Cardiff CF10 3DP
+44 2920 727 980
+44 2920 727 989 fax

EUROPE

Austria
Tuchlauben 8
1010 Vienna
+43 (0) 1 403 0001
vienna@bonhams.com

Belgium
Boulevard
Saint-Michel 101
1040 Brussels
+32 (0) 2 736 5076
belgium@bonhams.com

Denmark
Henning Thomsen
+45 4178 4799
denmark@bonhams.com

France
4 rue de la Paix
75002 Paris
+33 (0) 1 42 61 10 10
paris@bonhams.com

Germany - Cologne
Albertusstrasse 26
50667 Cologne
+49 (0) 221 2779 9650
cologne@bonhams.com

Germany - Munich
Maximilianstrasse 52
80538 Munich
+49 (0) 89 2420 5812
munich@bonhams.com

Greece
7 Neofytou Vamva Street
Athens 10674
+30 (0) 210 3636 404
athens@bonhams.com

Ireland
31 Molesworth Street
Dublin 2
+353 (0) 1 602 0990
dublin@bonhams.com

Italy - Milan
Via Boccaccio 22
20123 Milano
+39 0 2 4953 9020
milan@bonhams.com

Italy - Rome
Via Sicilia 50
00187 Roma
+39 0 6 48 5900
rome@bonhams.com

The Netherlands
De Lairessestraat 154
1075 HL Amsterdam
+31 (0) 20 67 09 701
amsterdam@bonhams.com

Portugal
Rua Bartolomeu Dias nº
160. 1º
Belem
1400-031 Lisbon
+351 (0) 91 921 4778
portugal@bonhams.com

Russia – Moscow
Anastasia Vinokurova
+7 964 562 3845
russia@bonhams.com

Russia - St. Petersburg
Marina Jacobson
+7 921 555 2302
russia@bonhams.com

Spain - Barcelona
Teresa Ybarra
+34 680 347 606
barcelona@bonhams.com

Spain - Madrid
Nunez de Balboa no 4-1A
28001 Madrid
+34 915 78 17 27
madrid@bonhams.com

Spain - Marbella
James Roberts
+34 952 90 62 50
marbella@bonhams.com

Switzerland
Rue Etienne-Dumont 10
1204 Geneva
+41 (0) 22 300 3160
geneva@bonhams.com

MIDDLE EAST

Dubai
Deborah Najar
+971 (0)56 113 4146
deborah.najar@bonhams.com

Israel
Joslyne Halibard
+972 (0)54 553 5337
joslyne.halibard@bonhams.com

NORTH AMERICA

USA

San Francisco •
220 San Bruno Avenue
San Francisco
CA 94103
+1 (415) 861 7500
+1 (415) 861 8951 fax

Los Angeles •
7601 W. Sunset Boulevard
Los Angeles
CA 90046
+1 (323) 850 7500
+1 (323) 850 6090 fax

New York •
580 Madison Avenue
New York, NY
10022
+1 (212) 644 9001
+1 (212) 644 9007 fax

Representatives:
Arizona
Terri Adrian-Hardy
+1 (480) 994 5362

California Central Valley
David Daniel
+1 (916) 364 1645

Southern California
Christine Eisenberg
+1 (949) 646 6560

Colorado
Julie Segraves
+1 (720) 355 3737

Florida
Palm Beach
+1 (561) 651 7876
Miami
+1 (305) 228 6600
Ft. Lauderdale
+1 (954) 566 1630

Georgia
Mary Moore Bethea
+1 (404) 842 1500

Illinois
Ricki Blumberg Harris
+1 (312) 475 3922
+1 (773) 267 3300

Massachusetts Boston/New England
Amy Corcoran
+1 (617) 742 0909

Nevada
David Daniel
+1 (775) 831 0330

New Mexico
Leslie Trilling
+1 (505) 820 0701

Oregon
Sheryl Acheson
+1(503) 312 6023

Pennsylvania
Margaret Tierney
+1 (610) 644 1199

Texas
Amy Lawch
+1 (713) 621 5988

Washington
Heather O'Mahony
+1 (206) 218 5011

Washington DC Mid-Atlantic Region
Martin Gammon
+1 (202) 333 1696

CANADA

Toronto, Ontario •
Jack Kerr-Wilson
20 Hazelton Avenue
Toronto, ONT
M5R 2E2
+1 (416) 462 9004
info.ca@bonhams.com

Montreal, Quebec
David Kelsey
+1 (514) 341 9238
info.ca@bonhams.com

SOUTH AMERICA

Argentina
Daniel Claramunt
+54 11 479 37600

Brazil
+55 11 3031 4444
+55 11 3031 4444 fax

ASIA

Hong Kong •
Suite 2001
One Pacific Place
88 Queensway
Admiralty
Hong Kong
+852 2918 4321
+852 2918 4320 fax
hongkong@bonhams.com

Beijing
Hongyu Yu
Suite 511
Chang An Club
10 East Chang An Avenue
Beijing 100006
+86(0) 10 6528 0922
+86(0) 10 6528 0933 fax
beijing@bonhams.com

Japan
Akiko Tsuchida
Level 14 Hibiya Central
Building
1-2-9 Nishi-Shimbashi
Minato-ku
Tokyo 105-0003
+81 (0) 3 5532 8636
+81 (0) 3 5532 8637 fax
akiko@bonhams.com

Singapore
Bernadette Rankine
11th Floor, Wisma Atria
435 Orchard Road
Singapore 238877
+65 (0) 6701 8038
+65 (0) 6701 8001 fax
bernadette.rankine@bonhams.com

Taiwan
Summer Fang
37th Floor, Taipei 101 Tower
Nor 7 Xinyi Road, Section 5
Taipei, 100
+886 2 8758 2898
+886 2 8757 2897 fax
summer.fang@bonhams.com

AUSTRALIA

Sydney
76 Paddington Street
Paddington NSW 2021
Australia
+61 (0) 2 8412 2222
+61 (0) 2 9475 4110 fax
info.aus@bonhams.com

Melbourne
Como House
Como Avenue
South Yarra
Melbourne VIC 3141
+61 (0) 3 8640 4088
+61 (0) 2 9475 4110 fax
info.aus@bonhams.com

AFRICA

Nigeria
Neil Coventry
+234 (0)7065 888 666
neil.coventry@bonhams.com

South Africa - Johannesburg
Penny Culverwell
+27 (0)71 342 2670
penny.culverwell@bonhams.com

Registration and Bidding Form

(Attendee / Absentee / Online / Telephone Bidding)

Please circle your bidding method above.

<input type="checkbox"/>	<input type="checkbox"/>	<input type="checkbox"/>	<input type="checkbox"/>
--------------------------	--------------------------	--------------------------	--------------------------

Paddle number (for office use only)

This sale will be conducted in accordance with Bonhams' Conditions of Sale and bidding and buying at the Sale will be regulated by these Conditions. You should read the Conditions in conjunction with the Sale Information relating to this Sale which sets out the charges payable by you on the purchases you make and other terms relating to bidding and buying at the Sale. You should ask any questions you have about the Conditions before signing this form. These Conditions also contain certain undertakings by bidders and buyers and limit Bonhams' liability to bidders and buyers.

Data protection – use of your information

Where we obtain any personal information about you, we shall only use it in accordance with the terms of our Privacy Policy (subject to any additional specific consent(s) you may have given at the time your information was disclosed). A copy of our Privacy Policy can be found on our website (www.bonhams.com) or requested by post from Customer Services Department, 101 New Bond Street, London W1S 1SR United Kingdom or by e-mail from info@bonhams.com.

Credit and Debit Card Payments

There is no surcharge for payments made by debit cards issued by a UK bank. All other debit cards and all credit cards are subject to a 2% surcharge on the total invoice price.

Notice to Bidders.

Clients are requested to provide photographic proof of ID - passport, driving licence, ID card, together with proof of address - utility bill, bank or credit card statement etc. Corporate clients should also provide a copy of their articles of association / company registration documents, together with a letter authorising the individual to bid on the company's behalf. Failure to provide this may result in your bids not being processed. For higher value lots you may also be asked to provide a bank reference.

If successful

I will collect the purchases myself ☐

Please contact me with a shipping quote (if applicable) ☐

Sale title: Jewellery		Sale date: 13 May 2015	
Sale no. 22631		Sale venue: Knightsbridge	
If you are not attending the sale in person, please provide details of the Lots on which you wish to bid at least 24 hours prior to the sale. Bids will be rounded down to the nearest increment. Please refer to the Notice to Bidders in the catalogue for further information relating to Bonhams executing telephone, online or absentee bids on your behalf. Bonhams will endeavour to execute these bids on your behalf but will not be liable for any errors or failing to execute bids.			
General Bid Increments:			
£10 - 200by 10s		£10,000 - 20,000by 1,000s	
£200 - 500by 20 / 50 / 80s		£20,000 - 50,000by 2,000 / 5,000 / 8,000s	
£500 - 1,000by 50s		£50,000 - 100,000by 5,000s	
£1,000 - 2,000by 100s		£100,000 - 200,000by 10,000s	
£2,000 - 5,000by 200 / 500 / 800s		above £200,000at the auctioneer's discretion	
£5,000 - 10,000by 500s			
The auctioneer has discretion to split any bid at any time.			
Customer Number		Title	
First Name		Last Name	
Company name (to be invoiced if applicable)			
Address			
City		County / State	
Post / Zip code		Country	
Telephone mobile		Telephone daytime	
Telephone evening		Fax	
Preferred number(s) in order for Telephone Bidding (inc. country code)			
E-mail (in capitals)			
By providing your email address above, you authorise Bonhams to send to this address information relating to Sales, marketing material and news concerning Bonhams. Bonhams does not sell or trade email addresses.			
I am registering to bid as a private buyer <input type="checkbox"/>		I am registering to bid as a trade buyer <input type="checkbox"/>	
If registered for VAT in the EU please enter your registration here: □□ / □□□ - □□□□ - □□		Please tick if you have registered with us before <input type="checkbox"/>	

Please note that all telephone calls are recorded.

Telephone or Absentee (T / A)	Lot no.	Brief description	MAX bid in GBP (excluding premium & VAT)	Covering bid*

FOR WINE SALES ONLY		
Please leave lots "available under bond" in bond <input type="checkbox"/>	I will collect from Park Royal or bonded warehouse <input type="checkbox"/>	Please include delivery charges (minimum charge of £20 + VAT) <input type="checkbox"/>

BY SIGNING THIS FORM YOU AGREE THAT YOU HAVE SEEN THE CATALOGUE AND HAVE READ AND UNDERSTOOD OUR CONDITIONS OF SALE AND WISH TO BE BOUND BY THEM, AND AGREE TO PAY THE BUYER'S PREMIUM, VAT AND ANY OTHER CHARGES MENTIONED IN THE NOTICE TO BIDDERS. THIS AFFECTS YOUR LEGAL RIGHTS.	
Your signature:	Date:

* Covering Bid: A maximum bid (exclusive of Buyers Premium and VAT) to be executed by Bonhams only if we are unable to contact you by telephone, or should the connection be lost during bidding.

NB. Payment will only be accepted from an account in the same name as shown on the invoice and Auction Registration form.

Please email or fax the completed Auction Registration form and requested information to:

Bonhams, Customer Services, 101 New Bond Street, London, W1S 1SR. Tel: +44 (0) 20 7447 7447 Fax: +44 (0) 20 7447 7401, bids@bonhams.com

Bonhams 1793 Limited. Montpelier Street, London SW7 1HH. Incorporated in England. Company Number 4326560.

UK/06/14



Bonhams

Montpelier Street
Knightsbridge
London SW7 1HH

+44 (0) 20 7393 3900

+44 (0) 20 7393 3905 fax

