

# JEWELLERY

Tuesday 21 April 2015  
Oxford



# Bonhams



# JEWELLERY

Tuesday 21 April 2015 at 11.00  
Oxford

## BONHAMS

Banbury Road  
Shipton-on-Cherwell  
Kidlington  
Oxford  
OX5 1JH  
www.bonhams.com

## VIEWING

Saturday 18 April 09.00 to 12.00  
Monday 20 April 09.00 to 16.30  
Tuesday 21 April 09.00 to 11.00

## BIDS

+44 (0) 20 7447 7447  
+44 (0) 20 7447 7401 fax  
To bid via the internet  
please visit [www.bonhams.com](http://www.bonhams.com)

Please provide details of the lots  
on which you wish to place bids at  
least 24 hours prior to the sale.

New bidders must also  
provide proof of identity  
when submitting bids. Failure  
to do this may result in your  
bids not being processed.

## TELEPHONE BIDDING

Bidding by telephone will only  
be accepted on lots with a low  
estimate in excess of £500.

## LIVE ONLINE BIDDING IS AVAILABLE FOR THIS SALE

Please email [bids@bonhams.com](mailto:bids@bonhams.com)  
with "Live bidding" in the subject  
line 48 hours before the auction  
to register for this service

## Bonhams 1793 Limited

Registered No. 4326560  
Registered Office: Montpelier Galleries  
Montpelier Street, London SW7 1HH

+44 (0) 20 7393 3900  
+44 (0) 20 7393 3905 fax

## JEWELLERY ENQUIRIES

Frances Noble FGA DGA  
[frances.noble@bonhams.com](mailto:frances.noble@bonhams.com)  
+44 (0) 1865 853 653

Louise Dennis FGA DGA  
[louise.dennis@bonhams.com](mailto:louise.dennis@bonhams.com)  
+44 (0) 1865 853 654

Jessie Edmonds  
[jessica.edmonds@bonhams.com](mailto:jessica.edmonds@bonhams.com)  
+44 (0) 1865 853 663

**SALE NUMBER:** 22678

**CATALOGUE:** £8

## CUSTOMER SERVICES

Monday to Friday 8.30am to 6pm  
+44 (0) 20 7447 7447

Please see back of catalogue  
for important notice to  
bidders

## ILLUSTRATIONS

Front cover: Lot 267  
Back cover: Lot 146  
Inside front cover: Lot 47  
Inside back cover: Lot 146

## IMPORTANT INFORMATION

The United States  
Government has banned the  
import of ivory into the USA.  
Lots containing ivory are  
indicated by the symbol  $\Phi$   
printed beside the lot number  
in this catalogue.

Please note that as a result  
of recent legislation ruby and  
jadeite gemstones of Burmese  
(Myanmar) origin may not be  
imported into the US. Rubies  
and jadeite of non-Burmese  
origin require certification  
before import into the US.  
Items affected are marked with  
a symbol  $\approx$

## IMPORTANT NOTICE REGARDING IMPORTATION INTO THE UNITED STATES OF CORUM, FRANCK MULLER, PIAGET AND ROLEX WATCHES

Bonhams cannot arrange  
for the delivery of Corum,  
Franck Muller, Piaget and  
Rolex watches into The  
United States. The buyer or  
designated agent may collect  
the property in the country of  
sale.

Please also note that in some  
circumstances we are unable  
to ship the watch with its  
strap due to certain import  
restrictions.



## Bonhams 1793 Ltd Directors

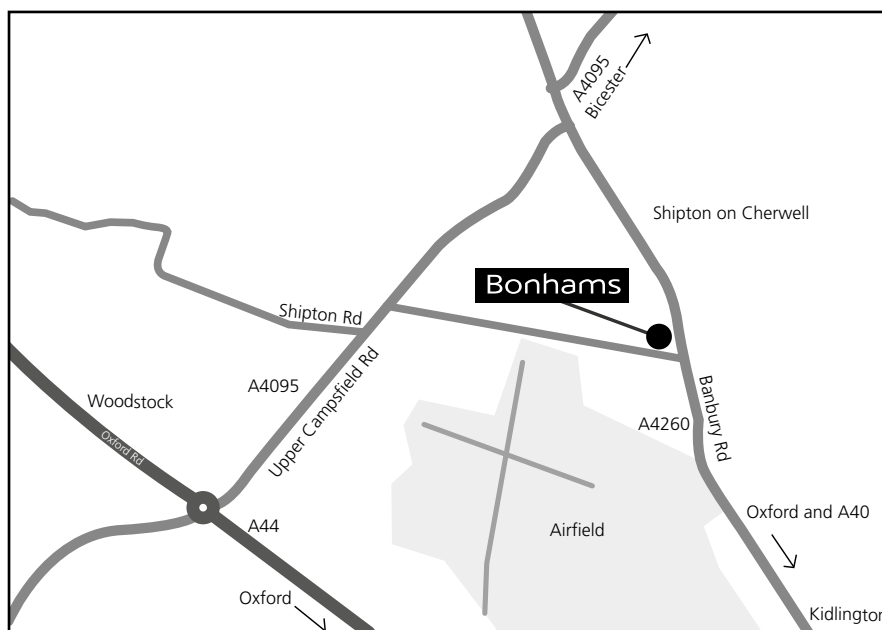
Robert Brooks Co-Chairman,  
Malcolm Barber Co-Chairman,  
Colin Sheaf Deputy Chairman,  
Matthew Girling Global CEO,  
Patrick Meade Global CEO,  
Geoffrey Davies, Jonathan Horwich,  
James Knight, Caroline Oliphant,  
Hugh Watchorn.

## Bonhams UK Ltd Directors

Colin Sheaf Chairman, Jonathan Baddeley,  
Antony Bennett, Matthew Bradbury,  
Lucinda Bredin, Harvey Cammell, Simon Cottle,  
Andrew Currie, Paul Davidson, Jean Ghika,  
Charles Graham-Campbell, Miranda Grant,  
Richard Harvey, Robin Hereford, Asaph Hyman,  
Charles Lanning, Sophie Law, Fergus Lyons,  
Gordon McFarlan,

Andrew McKenzie, Simon Mitchell, Jeff Muse,  
Mike Neill, Charlie O'Brien, Giles Peppiatt,  
Peter Rees, Iain Rushbrook, John Sandon,  
Tim Schofield, Veronique Scorer,  
James Stratton, Roger Tappin, Ralph Taylor,  
Shahin Virani, David Williams,  
Michael Wynell-Mayow, Suzannah Yip.

# SALE INFORMATION



By Rail: Oxford train station

## **Saleroom**

Banbury Road  
Shipton on Cherwell  
Kidlington  
Oxford  
OX5 1JH

+44 (0) 1865 853 640  
+44 (0) 1865 372 722 fax

## **Condition Reports**

We highly recommend that potential buyers make efforts to inspect the lots in Oxford in person, during our public viewing.

We expect that there may be a large number of condition enquiries, and the effect will be that clients submitting long and elaborate requests are likely to be dealt with after those with short and specific requests.

## **By Road**

From London:  
Exit the M40 at junction 9. Take the A34 to Oxford and then the A44 to Woodstock. At Woodstock roundabout take the 3rd exit towards Bicester (A4095). Take the first right and Bonhams is at the far end on the left.

From the A40 West:  
Take the A40 towards Oxford. Take the first left at the Eynsham roundabout. Drive through Church Hanborough and then turn right on to the A4095. Drive through Bladon and straight over the Woodstock roundabout. Take the first right and Bonhams is at the far end on the left.

## **Shipping Information**

Unless you wish to use your own shipping company, please contact any of the below:

Jessie Edmonds  
jessica.edmonds@bonhams.com  
+44 (0) 1865 853 663

Mail Boxes Etc.  
266 Banbury Road,  
Oxford OX2 7DL  
+44 (0)1865 514 655  
info@mbesummertown.co.uk

Or

Pack & Send  
3 Botley Road, Oxford OX2 0AA  
+44 (0)1865 260 610  
oxford@packsend.co.uk

You can also contact  
shipping@bonhams.com with any difficulties  
or questions arising from the above or for any  
CITES requirements.

# JEWELLERY



- 1  
**TIFFANY & CO: A BEAD NECKLACE**  
Comprising a single strand of graduated beads, to signed clasp stamped '585', *length 42cm*.  
  
£500 - 700
- 2  
**A YELLOW PRECIOUS METAL COLLAR NECKLACE AND BRACELET**  
The necklace composed of entwined ropetwist mesh-link strands, highlighted by bead accents, to clasp stamped '750', together with a wide bracelet of similar design, composed of plaited ropetwist strands, also stamped '750', *necklace length 40cm, bracelet length 20cm*. (2)  
  
£1,500 - 2,000
- 3  
**A SMALL COLLECTION OF JEWELLERY**  
Comprising a diamond half hoop ring, an Edward VII sovereign set pendant, dated 1907, a George V half sovereign set ring, dated 1913, a Latin cross pendant on chain, and a sapphire and white stone crossover dress ring, *first ring size N*. (6)  
  
£600 - 800
- 4  
**A PAIR OF DIAMOND SET EARCLIPS**  
Each tapered half hoop decorated with openwork wirework clusters, highlighted by brilliant-cut diamonds, and spaced by similarly cut diamond set collars, to hinged clip fittings, 18ct gold mounted, signed 'GS', *length 2.2cm*.  
  
£600 - 800
- 5  
**A DIAMOND SET BRACELET**  
Composed of a series of floral and geometric openwork links, set throughout with brilliant-cut diamonds, yellow precious metal mounted, *total diamond weight approximately 2.90ct, length 18cm*.  
  
£1,000 - 1,500
- 6  
**A FRENCH FANCY-LINK BRACELET**  
The brick-link bracelet with French eagle's head marks, lacking clasp, *length 16cm*.  
  
£500 - 700
- 7  
**A YELLOW PRECIOUS METAL CHAIN**  
Composed of figaro links, with tongue clasp, unmarked, *length 38.5cm*.  
  
£700 - 900
- 8  
**A COLLECTION OF JEWELLERY**  
Comprising a 9ct three colour gold necklace, composed of shaped pyramidal links of brushed finish, an 18ct gold fancy-link necklace, composed of ropetwist-links with textured bead spacers, a continuous baton-link necklace, a continuous ropetwist-link necklace, a 9ct gold cigar cutter, a further cigar cutter, and four other items, *first necklace length 78cm*. (10)  
  
£800 - 1,200
- 9 ≈  
**A RUBY AND DIAMOND RING**  
Set to the front with three rows of alternating baguette-cut rubies and brilliant-cut diamonds, (rubies untested for natural versus synthetic origin), to yellow precious metal mount stamped '750', *total diamond weight approximately 0.90ct, ring size R½*.  
  
£600 - 800
- 10  
**A SYNTHETIC RUBY AND DIAMOND DRESS RING, CIRCA 1940**  
The mount of odeonesque design, channel set to the front with calibre-cut synthetic rubies, within a single-cut diamond frame, with bifurcated shoulder, *total diamond weight approximately 0.30ct, ring size I (leading edge)*.  
  
£500 - 700
- 11  
**A DIAMOND DRESS RING**  
The tapered mount pavé set with brilliant-cut diamonds, two colour precious metal mounted, *ring size M*.  
  
£500 - 700
- 12  
**A PAIR OF DIAMOND-SET CLIP/BROOCHES, CIRCA 1940**  
Each of pleated ribbon design and accented by a row of cushion-shaped diamonds, *total diamond weight approximately 0.80ct, length 4.9cm*. (2)  
  
£600 - 800





1



3 (part)



2 (part)



4

2 (part)



5



6



7



8 (part)



9



10



11



12



13

**A DIAMOND SET FLORAL BROOCH AND A CULTURED PEARL NECKLACE**

The openwork brooch with a flowerhead cluster of single-cut diamonds, to stem and scrolled ribbon highlighted with further single, baguette and old-cut diamonds, white precious metal mounted, together with a double strand cultured pearl necklace, to 9ct gold, amethyst and half pearl cluster clasp, *brooch length 4.9cm. (2)*

£500 - 700

14

**A PAIR OF CULTURED PEARL AND DIAMOND EAR PENDANTS**

Each cultured pearl drop surmounted by two oval and circular panels, pavé set with graduated brilliant-cut diamonds, on post and butterfly fittings, stamped '14k', (one diamond deficient), *length 2.5cm.*

£500 - 700

15

**PUIG DORIA: A PAIR OF CULTURED PEARL AND DIAMOND EARRINGS**

Each cultured pearl measuring approximately 14.5mm in diameter, surmounted by a trio of brilliant-cut diamonds, to post and hinged clip fittings, signed and stamped '750', *length 2.25cm.*

£500 - 700

16

**A PAIR OF CULTURED PEARL AND DIAMOND EAR PENDANTS**

Each cultured pearl drop of approximately 8mm diameter, to a linear suspension of baguette and brilliant-cut diamonds, below scrolled surmount of further graduated brilliants, on post and hinged clip fittings, white precious metal mounted, *length 4.6cm.*

£1,500 - 2,000

17

**A CULTURED PEARL AND DIAMOND THREE STONE RING**

The cultured pearl measuring approximately 8mm in diameter, between two claw set old-cut diamonds, white precious metal mounted, indistinctly marked, *ring size M.*

£500 - 700

18 Ω

**A CULTURED PEARL AND DIAMOND CLUSTER RING**

The 9.15mm cultured pearl within a rose-cut diamond surround, two colour precious metal mounted, *ring size L.*

£500 - 700

Accompanied by a cultured pearl identification report issued from GIA, report no. 2165567944, dated 16th September 2014.

19

**A DIAMOND STAR BROOCH AND A DIAMOND SET STICK PIN**

The brooch centred with an old-cut diamond, to rays of graduated lasque-cut diamonds, the stick pin with millegrain set old-cut diamond terminal, *brooch length 3.5cm. (2)*

£500 - 700

20

**A LATE 19TH CENTURY DIAMOND CRESCENT BROOCH**

The pierced crescent-shaped panel with an arc of graduated old-cut diamonds in raised claw settings, to a rose and lasque-cut diamond set ground, (one diamond deficient, later fitting), *length 3.1cm.*

£700 - 900

21

**A VICTORIAN SAPPHIRE AND DIAMOND CRESCENT BROOCH**

The closed crescent set with a line of graduated mixed-cut sapphires and a line of graduated old brilliant-cut diamonds, mounted in gold and silver, *diameter 3.3cm.*

£500 - 600

22

**A THREE ROW CULTURED PEARL NECKLACE**

Comprising three rows of uniform cultured pearls, to a cluster clasp of textured petals around central cultured pearl, with claw set brilliant-cut diamond highlights, stamped '750', cased, *necklace length 38.5cm.*

£800 - 1,000

23

**A CULTURED PEARL NECKLACE WITH DIAMOND SET CLASP**

Comprising two strands of uniform cultured pearls, to a textured flowerhead and scrolled ribbon clasp, set with brilliant and single-cut diamonds, two colour precious metal mounted, *shortest length 42cm.*

£400 - 600





13 (part)



14



15



18



17



16



13 (part)



19 (part)



20



21



22



23

24

**A VICTORIAN DIAMOND SET LOCKET PENDANT AND TWO BROOCHES**

The oval locket pendant applied with Latin cross motif, centred with an old-cut diamond, together with a citrine set brooch, with scrolled white enamel mount and beaded border, and a diamond and blue enamel panel brooch, modelled as a buckle, suspending tassel fringe below, *pendant length 5.2cm. (3)*

**£600 - 800**

25

**TWO VARI GEM-SET NECKLACES**

Each spectacle set with a line of oval mixed-cut vari-coloured gemstones, spaced by trace-link connectors, yellow precious metal mounted, *length 50cm.*

**£600 - 800**

26

**A DIAMOND AND CULTURED PEARL BOW BROOCH AND EARCLIPS**

The brooch realistically modelled as a ribbon bow, set with rose-cut diamonds in closed-back settings, suspending a later 9.2mm cultured pearl, with later pendant fittings, the earclips with similar rose-cut diamond set surmounts, each suspending an 8.2mm or 8.5mm cultured pearl, with similarly cut diamond set cap, *brooch length 4.3cm, earclips length 2.7cm. (2)*

**£700 - 900**

27

**A PAIR OF ENAMEL AND GEM SET EAR PENDANTS**

Each pear-shaped panel with central gem set drop, below a geometric surmount with foliate and bead accents, heightened throughout with black enamel Greek key and scrolling borders, on post and hinged clip fittings, with Portuguese marks, *length 3.9cm.*

**£300 - 500**

28

**A VICTORIAN BROOCH AND A PAIR OF EAR PENDANTS CIRCA 1840**

The brooch with a finely chased foliate panel, within a repoussé surround, set with pear-shaped garnets and step-cut pastes in foiled closed-back settings, suspending a similar pendant with snake-link swags, accompanied by a similarly set pair of ear pendants, cased, *brooch length 8cm, ear pendants length 4cm. (2)*

**£500 - 700**

29 Y

**A PAIR OF CORAL AND LAVA CAMEO EAR PENDANTS**

Each detachable teardrop-shaped lava cameo carved to depict the profile of a classical maiden, wearing laurel wreath crown, below a foliate spray, to later oval coral *corallium rubrum* cabochon surmount, framed by ropetwist wirework borders, on post and hinged clip fittings, stamped '750', *length 6.2cm.*

**£700 - 800**

This lot will be subject to USA Fish and Wildlife regulations if it is to be imported into the USA.

30

**A MID 19TH CENTURY AQUAMARINE BROOCH**

The openwork foliate scrolled panel centred with an oval mixed-cut aquamarine, suspending a pear-cut aquamarine drop of conforming design below, *length 5.5cm.*

**£500 - 600**

31

**A HARDSTONE CAMEO BROOCH**

The oval hardstone cameo carved to depict the profile of Dionysus, Greek god of wine, wearing a vine-wreath crown, framed by foliate panels highlighted with seed pearls, *length 5.2cm.*

**£600 - 800**

32

**A VICTORIAN HARDSTONE CAMEO BROOCH**

The oval hardstone cameo carved to depict a classical female portrait profile, with laurel wreath diadem, to pierced setting and snake-link frame, applied with scrolled ribbon bows and beads, *length 5.5cm.*

**£500 - 700**

33

**A LAVA CAMEO NECKLACE**

Composed of graduated lava cameo panels in shades of brown, white and grey, carved to depict the portraits of a bacchante and classical youths, spaced by sprays of fruiting vines and foliage, to double baton-link back chain with further portrait cameo clasp, *length 43cm.*

**£1,300 - 1,800**



24

26

25

28

27

29

30

31

32

33



34

**A YELLOW PRECIOUS METAL FANCY-LINK BRACELET**

Composed of entwined ropetwist-links of polished and textured finish, with fittings stamped '750', *length 24cm.*

**£700 - 900**

35

**A FANCY-LINK COLLAR NECKLACE**

The graduated collar with textured decoration and beaded accents, stamped '585', *length 41cm.*

**£400 - 500**

36

**A SAPPHIRE AND DIAMOND PENDANT**

The sinuous openwork panel with entwined channels of rose-cut diamonds, bordered by three oval cabochon sapphires, below a double belcher-link chain suspension, yellow precious metal mounted, *length 5.1cm.*

**£500 - 700**

37

**A DIAMOND SET NECKLACE, BANGLE AND EARRINGS  
MATCHED SUITE**

Each of crossover design, with clusters of graduated brilliant-cut diamonds and navette-shaped beads, the necklace with flattened curb-link back chain, signed 'CG', the earrings and bangle signed 'AMG' for Alan Gard, 9ct gold mounted, *necklace length 40cm.* (3)

**£500 - 700**

38

**A SAPPHIRE AND DIAMOND LINE BRACELET AND BROOCH**

The bracelet alternately set with circular-cut sapphires and pairs of single-cut diamonds, white precious metal mounted, stamped '18k', together with a brooch of tiered spray design, set with oval-cut sapphires and single-cut diamonds, to double pin fitting, *bracelet length 18cm, brooch length 4.2cm.* (2)

**£600 - 800**

39

**A COLLAR NECKLACE AND A GEM SET RING AND BROOCH**

The graduated mesh-link collar with central flowerhead panel, spaced by smaller similar flowerhead motifs, to beaded borders, stamped '750 Italy', together with a sapphire and diamond set brooch, of stylised flowerhead and spray design, and a gem set flowerhead ring, of similar design, *necklace length 43cm.* (3)

**£500 - 600**

40

**AN ALBERT CHAIN WITH FOB PENDANT**

The graduated curb-link Albert chain with swivel clasps, stamped '9 .375', suspending a shield-shaped fob pendant, engraved with foliate scrolls, *chain length 41cm.*

**£300 - 500**



36

35

34

37

39

38 (part)

40

38 (part)



41

**A CHARM BRACELET**

The curb-link bracelet stamped '9 .375', with 9ct gold padlock clasp, suspending a collection of assorted charms, to include a sedan chair, a mill and a church, *length approximately 19cm*.

**£600 - 800**

42

**A DIAMOND CROSS PENDANT AND A PAIR OF EAR PENDANTS**

The Latin cross of rose and lasque-cut diamonds in closed foil-backed settings, spaced by foliate panels, suspended from a ropetwist-link chain, together with a pair of ear pendants, of foliate design, similarly set with lasque-cut diamonds, on wire fittings, *pendant length 6.3cm*. (2)

**£800 - 1,200**

43

**A BANDED AGATE NECKLACE AND A VARI GEM-SET NECKLACE**

The first of graduated banded agate beads, suspending a 19th century Latin cross pendant set with cabochon banded agate, with half pearl terminals, the second comprising a belcher-link chain, with later fringe of various mixed-cut gemstone drops, *first necklace length 36cm*. (2)

**£800 - 1,000**

44

**A VICTORIAN BANDED AGATE PENDANT NECKLACE**

The oval banded agate pendant with ropetwist borders, glazed verso, suspended from a gas-pipe link collar necklace, *pendant length 5.1cm*.

**£600 - 800**

45

**A COLLECTION OF JEWELLERY**

Comprising a graduated opal bead single strand necklace, with faceted spacer beads between, a graduated banded agate bead single strand necklace, a faceted smoky quartz and cornelian single strand necklace, an oval portrait panel brooch/pendant, a garnet and paste set oval hinged bangle, an enamel and paste set brooch, and two further paste set items, *first necklace length 42cm*. (8)

**£700 - 900**

46

**A PAIR OF MABE PEARL EARRINGS, A BROOCH AND TWO STICK PINS**

The earrings with circular mabe pearls to entwined wirework mounts, on post and hinged clip fittings, 18ct gold mounted, together with an onyx, half pearl and white stone panel brooch, a pearl single stone stick pin, (pearl untested for origin), and a further stick pin, *earrings diameter 2.1cm*. (4)

**£500 - 700**

47

**AN AMBER BEAD NECKLACE**

Comprising a long single strand of slightly graduated amber beads, suspending further amber bead drop with vari-coloured thread tassels below, *length (excluding drop) approximately 152cm, weight approximately 123.2gm*.

**£600 - 800**

Accompanied by a report issued by Gemmological Certification Services, stating that the amber beads are of Baltic origin, with no indications of heating, measuring approximately 10.6mm to 40.3mm in length, report no. 5775-1435, dated 20th February 2015.

See illustration on inside front cover



41



42



43



45 (part)

45 (part)



44



46 (part)



48

**A GEM SET FRINGE NECKLACE AND A VICTORIAN GOLD OVAL LOCKET PENDANT**

The necklace centred with assorted gemstones including blue zircons, garnets, amethysts, etc, with suspended pendant drops and swag chains between, to fancy-link back chain and S-shaped clasp, the double sided locket enclosing glazed interiors, on reeded bale, the front engraved with monogram, *chain length 41.5cm, locket length 3.8cm.* (2)

**£500 - 700**

49

**A DIAMOND PANEL RING**

The square panel with central raised setting, set with a cluster of old-cut diamonds, to white precious metal mount stamped 'platinum', *ring size P.*

**£400 - 600**

50

**AN AQUAMARINE AND DIAMOND DRESS RING, CIRCA 1945**

The step-cut aquamarine claw set between bi-coloured foliate shoulders, set with graduated brilliant-cut diamonds, *total diamond weight approximately 0.30ct, ring size N.*

**£700 - 900**

51

**AN AQUAMARINE AND DIAMOND DRESS RING**

The rectangular mixed-cut aquamarine with canted corners, claw set between brilliant-cut diamond set shoulders, white precious metal mounted, *ring size J1½.*

**£700 - 900**

52

**A BLACK OPAL AND DIAMOND CLUSTER RING**

The oval cabochon black opal claw set within a border of brilliant-cut diamonds, two colour precious metal mounted, *ring size N.*

**£600 - 800**

53

**AN AMETRINE RING AND PENDANT SUITE**

Of matched design, each claw set with a rectangular step-cut ametrine, yellow precious metal mounted, stamped '750', *ring size K1½, pendant length 3.2cm.* (2)

**£500 - 600**

54

**A PAIR OF AQUAMARINE AND DIAMOND CLUSTER EARRINGS**

Each oval-cut aquamarine drop within a surround of brilliant-cut diamonds, below diamond set surmounts, on post and butterfly fittings, 18ct white gold mounted, *length 2cm.*

**£300 - 500**

55

**A COLLECTION OF GEM SET RINGS**

Comprising an old-cut diamond three stone ring, of crossover design, stamped '18ct', a diamond full hoop eternity ring, the white precious metal mount stamped '18ct', a turquoise five stone ring, the 15ct gold mount with scroll engraved decoration, and three further gem set dress rings, *first ring size N.* (6)

**£700 - 900**

56

**AN AMETHYST, DIAMOND AND HALF PEARL PENDANT**

The oval mixed-cut amethyst with concave table facet, inset with an old-cut diamond, to border and bale of half pearls, the reverse with vacant screw apertures, (pearls untested for origin), *diamond weight approximately 0.60ct, length 4.4cm.*

**£800 - 1,200**

57

**A DIAMOND PANEL BROOCH**

Centred with a circular openwork cluster, millegrain set with old and rose-cut diamonds, between scroll pierced tapered shoulders, similarly set with further rose-cut diamonds, two colour precious metal mounted, *length 4.7cm.*

**£500 - 700**

58

**AN AMETHYST AND DIAMOND BROOCH**

The tapered openwork panel with scrolled borders, centred with an oval mixed-cut amethyst, framed by four old-cut diamonds to the cardinal points, the pin with Polish marks, *length 5.5cm.*

**£800 - 1,000**

59

**AN AMETHYST AND DIAMOND PANEL BROOCH**

The shaped rectangular panel centred with graduated oval-cut amethysts, to pierced and millegrained scrolled borders of rose-cut diamonds, white precious metal mounted, *length 5.55cm.*

**£800 - 1,200**

60

**A PAIR OF AQUAMARINE AND SEED PEARL EARRINGS**

Each fancy step-cut aquamarine in claw setting, to a wirework panel highlighted with seed pearls, on post and butterfly fittings, 9ct two colour gold mounted, with maker's mark 'C&F', *length 1.6cm.*

**£300 - 500**

61

**AN EDWARD VII DIAMOND SET STICK PIN AND A PARCEL-GILT SILVER SPOON**

The stick pin with lasque-cut diamond set Royal cypher, surmounted by coronet, in fitted Garrard & Co Ltd case, together with an Edward VII parcel-gilt spoon, commemorative of the coronation, also in fitted case, *stick pin terminal length 2.3cm.* (2)

**£300 - 400**

62

**THREE DIAMOND AND GEM SET RINGS**

Comprising a rectangular panel ring, set with graduated brilliant-cut diamonds around central circular-cut sapphire, to a single-cut diamond border, mounted in white precious metal, together with two zircon dress rings, each circular-cut stone claw set between diamond set shoulders, both mounted in white precious metal, stamped '18&pt', *first ring size M.* (3)

**£800 - 1,000**





63

#### **TWO DIAMOND AND GEM SET PENDANTS**

Adapted from ear pendants, each circular openwork scrolled panel of step-cut onyx, smoky quartz and single-cut diamonds, suspending central brilliant and single-cut diamond drop, below a similarly set linear and foliate surmount, with adapted wire fittings, the reverse stamped '18ct & Pt', accompanied by two fine trace-link chains, *pendant lengths 5.7cm.*

**£500 - 700**

See also illustration on page 3

64

#### **A DIAMOND LINE BRACELET**

Comprising a line of graduated old-cut diamonds in millegrained square settings, to expanding baton-link bracelet, two colour precious metal mounted, *length approximately 17cm.*

**£700 - 900**

65

#### **A PAIR OF ONYX AND DIAMOND EARRINGS**

Each shaped rectangular panel centred with a cabochon onyx, to pavé set ground of brilliant-cut diamonds, on post and hinged clip fittings, two colour precious metal mounted, stamped '14k', *length 1.9cm.*

**£600 - 700**

66

#### **A DIAMOND HEART-SHAPED RING**

The heart-shaped panel pavé set with brilliant-cut diamonds of white and black tint, (diamonds untested for natural colour), to pierced gallery and tapered mount of brushed finish, stamped '18k 750', *ring size L.*

**£600 - 800**

67

#### **A DIAMOND DRESS RING**

The pierced plaque with raised central section and millegrain detailed lobes, set throughout with old brilliant-cut diamonds, *total diamond weight approximately 0.95ct, ring size E (hoop misshapen).*

**£500 - 700**

68

#### **VAN CLEEF & ARPELS: A DIAMOND AND GEM SET HALF HOOP RING**

The half hoop ring of bombe design, pavé set with graduated brilliant-cut diamonds and circular-cut black stones, to mount signed 'VCA', with indistinct lozenge-shaped maker's mark and eagle's head control mark, *ring size I.*

**£600 - 800**

69

#### **VAN CLEEF & ARPELS: A DIAMOND HALF HOOP RING**

The half hoop ring of bombe design, pavé set with graduated brilliant-cut diamonds, to mount signed 'VCA', with indistinct lozenge-shaped maker's mark, *ring size I.*

**£800 - 1,200**

70

#### **AN ONYX AND DIAMOND PENDANT**

The leaf-shaped black onyx panel framed by a graduated border of brilliant-cut diamonds, to snake-link chain stamped '750', *pendant length 4.2cm.*

**£600 - 800**

71

#### **A DIAMOND SINGLE STONE RING**

The old-cut diamond in claw setting, to shank stamped '18ct plat', *ring size N.*

**£700 - 900**

72

#### **A DIAMOND HALF HOOP ETERNITY RING**

The flat court section band channel set with a line of princess-cut diamonds, platinum mounted, *total diamond weight approximately 1ct, ring size L.*

**£600 - 800**

73

#### **TIFFANY & CO: AN 18CT GOLD PENDANT, DESIGNED BY PALOMA PICASSO, AND TWO BAND RINGS**

The circular panel pendant of stylised openwork snowflake design, signed and hallmarked, suspended from a black cord necklace, together with a concave yellow precious metal band ring, by the same maker, the exterior with engraved signature, stamped '750', a similar white metal example, stamped '925', with two signed pouches, *pendant diameter 4cm, both rings size M (leading edge). (3)*

**£400 - 600**

74

#### **A PAIR OF SAPPHIRE AND DIAMOND EARRINGS**

Each oval-cut sapphire within a brilliant-cut diamond border, to a similarly cut diamond set surmount, on post and hinged-back fittings, *total diamond weight approximately 0.75ct, length 1.9cm.*

**£600 - 800**

75

#### **A DIAMOND BAR BROOCH**

The long tapered bar set throughout with graduating old-cut diamonds, to pierced mount, *length 11.3cm.*

**£600 - 800**

76

#### **A SAPPHIRE SET BRACELET**

The articulated bracelet composed of overlapping geometric panels, applied with circular-cut sapphires and foliage, to clasp stamped '14k', *length 18cm.*

**£500 - 700**

77

#### **A PAIR OF SAPPHIRE AND DIAMOND CLUSTER EARRINGS**

Each oval mixed-cut sapphire claw set within a border of brilliant-cut diamonds, on post and screw-back butterfly fittings, cased, *length 1.3cm.*

**£700 - 900**





78

**A DIAMOND PANEL RING**

The square panel set with old brilliant-cut diamonds, between tapered shoulders set with trios of rose-cut diamonds, with millegrain detail throughout, to shank stamped '18ct & plat', *total weight of old brilliant-cut diamonds approximately 2.25ct, ring size L½.*

£700 - 900

79

**A DIAMOND PANEL RING**

The shaped rectangular panel millegrain set with brilliant and single-cut diamonds, to similarly set foliate shoulders, above pierced gallery, two colour precious metal mounted, *ring size Q.*

£1,000 - 1,500

80

**A DIAMOND HEART PENDANT NECKLACE**

The central heart-shaped diamond framed by tapered baguette and brilliant-cut diamonds, to pierced gallery stamped '750', suspended from an 18ct white gold trace-link chain, *pendant length 1.4cm.*

£600 - 800

81

**A DIAMOND SET PENDANT ON CHAIN**

Designed as an openwork panel with scroll and foliate detail, highlighted by old and single-cut diamonds, the reverse with vacant screw aperture, suspended from later unassociated snake-link chain, *pendant length 3.35cm.*

£500 - 700

82

**A PAIR OF DIAMOND EAR PENDANTS**

Each teardrop-shaped panel with collet set brilliant-cut diamond, to a pavé set ground and square panel surmount of smaller brilliants, on post and butterfly fittings, white precious metal mounted, *length 2.35cm.*

£700 - 900

83

**A PAIR OF DIAMOND CLUSTER EAR PENDANTS**

Each flowerhead cluster of graduated old-cut diamonds, below a linear suspension and trio surmount of similarly cut diamonds, on post and butterfly fittings, white precious metal mounted, *length 2.9cm.*

£800 - 1,000

84

**A PAIR OF EARLY 20TH CENTURY RUSSIAN DIAMOND EAR PENDANTS**

Each pierced circular drop set with a cluster of old and single-cut diamonds, below an old-cut diamond surmount, on post and hinged fittings with Russian marks for 56 standard, *length 2.85cm.*

£500 - 700

85

**AN ENAMEL AND DIAMOND SET HORSE AND JOCKEY BROOCH**

Modelled as a jockey riding a galloping horse, the jockey highlighted with shades of green, pink and white enamel, (some enamel loss), the horse pavé set with graduated brilliant-cut diamonds, *width 3.5cm.*

£500 - 600

86

**A DIAMOND BOW BROOCH**

The stylised openwork ribbon bow of graduated single and brilliant-cut diamonds, to central channel of baguette-cut diamonds, white precious metal mounted, *length 4.9cm.*

£600 - 800

87

**A DIAMOND DOUBLE CLIP BROOCH**

Comprising two clips, each openwork panel of stylised scrolled design, set with baguette, brilliant, Swiss and single-cut diamonds, to shaped brooch frame, white precious metal mounted, *length 4.55cm.*

£700 - 900

88

**A LATE 19TH CENTURY DIAMOND SPRAY BROOCH AND A DIAMOND THREE STONE RING**

The floral spray brooch with flowerhead and foliage of graduated old-cut diamonds, (one diamond deficient), the ring with graduated round brilliant-cut diamonds in claw setting, two colour precious metal mounted, *brooch length 3.6cm, ring size K. (2)*

£600 - 800

89

**A DIAMOND FLORAL SPRAY BROOCH**

The stylised spray of flowerheads and foliage, set throughout with graduated brilliant and single-cut diamonds, white precious metal mounted, *length 7cm.*

£700 - 900

90

**A DIAMOND PANEL BROOCH**

The pierced geometric panel of stylised ribbon bow design, millegrain set with graduated old, brilliant and single-cut diamonds, to pierced gallery, white precious metal mounted, *length 4.1cm.*

£1,000 - 1,500

91

**A DIAMOND SET FLORAL SPRAY BROOCH**

The asymmetric spray with central flowerhead framed by foliage, set throughout with graduated cushion and old-cut diamonds, the detachable brooch fitting with later clasp, *length 6cm.*

£600 - 800

92

**AN EARLY 20TH CENTURY SAPPHIRE, DIAMOND AND HALF PEARL BAR BROOCH**

The shaped panel with angular terminals of step-cut sapphires, set to the centre with alternate old-cut diamonds and half pearls, framed by pierced scrolled borders of rose-cut diamonds, two colour precious metal mounted, (sapphires untested for natural versus synthetic origin, pearls untested for origin), *length 6.8cm.*

£300 - 400



78



79



82



80



83



85



86



81



84



87



89



88 (part)



90



91



92

93

**A DIAMOND HEART PENDANT NECKLACE**

The heart-shaped pendant pavé set with graduated brilliant-cut diamonds, suspended from a collar necklace stamped '14k', yellow precious metal mounted, *pendant length 2.5cm*.

**£600 - 800**

94

**A DIAMOND SET DRESS RING**

Of two colour precious metal crossover design, set to one side with rows of uniform brilliant-cut diamonds, indistinctly marked, *ring size M*.

**£500 - 700**

95

**A DIAMOND TWO STONE RING**

The abstract mount set with round brilliant-cut diamonds in square settings, spaced by a knife-edged bar, between bifurcated shoulders, stamped '750', *ring size M*.

**£600 - 800**

96

**A DIAMOND CLUSTER RING**

The flowerhead cluster of brilliant-cut diamonds in claw setting, between trifurcated shoulders, to shank stamped '18ct', *ring size M½*.

**£500 - 700**

97

**A DIAMOND THREE STONE RING**

The brilliant-cut diamonds in claw setting, between pierced scrolled shoulders, *total diamond weight approximately 1.30ct, ring size N*.

**£700 - 900**

98

**A CORAL AND CULTURED PEARL SET NECKLACE**

The fancy plaited-link necklace suspending two graduated drops below, each with a coral *corallium rubrum* cabochon and cultured pearl set pendant drop, stamped '750' and signed 'Artlinea', *length 52cm*.

**£500 - 700**

This lot will be subject to USA Fish and Wildlife regulations if it is to be imported into the USA.

99 ≈

**A FRENCH GOLD AND DIAMOND SET BIRD BROOCH AND A GEM SET BROOCH**

The first modelled as a bird on a branch, its scrolling tail feathers with brilliant-cut diamond highlights, lozenge-shaped maker's mark and eagle's head control marks, the reverse applied with two prong hinged clip fitting, together with a brooch modelled as a bird and nest, the bird set with a cabochon emerald and ruby, the seed pearl set nest inset with cultured pearl 'eggs', also with two prong hinged fitting, *first brooch length 3.6cm. (2)*

**£300 - 500**

100 Y

**A CORAL AND DIAMOND SPRAY BROOCH**

The stylised foliate spray with shaped coral *corallium rubrum* cabochon flowerheads, to scrolled ribbon surround of brilliant-cut diamonds, two colour precious metal mounted, stamped '750', *length 6.5cm*.

**£500 - 600**

This lot will be subject to USA Fish and Wildlife regulations if it is to be imported into the USA.

101

**A DIAMOND SET RAM'S HEAD RING**

Of crossover design with part-textured decoration, the ram's head highlighted with channels of brilliant-cut diamonds, hallmarked for 18ct gold, with maker's mark 'VJB', *ring size Q*.

**£250 - 300**

102

**AN AMBER BEAD NECKLACE**

The continuous single strand of graduated amber beads measuring approximately 13.5mm to 27.6mm in length, *total length approximately 58cm, weight approximately 62.1gm*.

**£600 - 800**

Accompanied by a report issued from Gemmological Certification Services, stating that the amber beads are of Baltic origin, with no indications of heating, report no. 5775-1201, dated 14th January 2015.

103

**KUTCHINSKY: A TIGER'S EYE PENDANT**

The teardrop-shaped tiger's eye panel framed by a textured claw border of abstract design, to signed integral bale, suspended from a fancy-link long chain, stamped '750', *pendant length 8.8cm*.

**£800 - 1,200**

104 ≈

**A RUBY AND DIAMOND FULL HOOP ETERNITY RING AND A MATCHED SAPPHIRE AND DIAMOND RING**

The first alternately set with circular-cut rubies and brilliant-cut diamonds, the second similarly set with circular-cut sapphires and brilliant-cut diamonds, both white precious metal mounted, *ring size M. (2)*

**£300 - 500**

105

**A DIAMOND SIX STONE RING**

Pinched claw set with six graduated old-cut diamonds, to white precious metal mount, *total diamond weight approximately 1.30ct, first ring size M*.

**£1,000 - 1,500**

106

**AN 18CT GOLD FANCY-LINK BRACELET**

The tapered woven bracelet of textured finish, with integral clasp bearing import marks for London 1966, signed 'RJ Ld', *length 19cm*.

**£1,200 - 1,500**

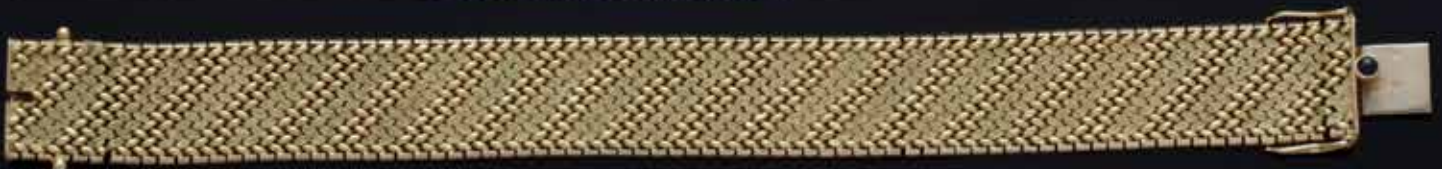
107

**A FRENCH FANCY-LINK BRACELET**

The wide articulated bracelet with part-frosted finish, to an integral clasp with cabochon blue stone thumbpiece, French eagle's head mark and lozenge-shaped maker's mark, *length 19cm*.

**£600 - 700**







108 ≈

**AN EMERALD, RUBY AND DIAMOND BAR BROOCH**

The slightly tapered channel of rectangular step-cut emeralds and rubies, spaced by pairs of old-cut diamonds, (adapted), *length 4.25cm.*

£500 - 600

109

**A DIAMOND PANEL BRACELET**

Comprising a line of openwork ropetwist links, each centred with seven graduated round brilliant-cut diamonds, spaced by single-cut diamond set collars, to clasp stamped with Swedish three crowns mark, *length 18cm.*

£600 - 800

The bracelet was presented to the vendor's mother to commemorate the launching of the 'Cepheus', an oil tanker, on 9th September 1971 in Landskrona, Sweden. The Cepheus continues to operate under a Chinese flag and is renamed Hua Hai I.

110

**AN EARLY 20TH CENTURY DIAMOND SET PANEL BROOCH**

The shaped oval openwork panel with pierced lattice work detail, millegrain set with four old-cut diamonds, to borders of similarly cut diamonds, two colour precious metal mounted, *length 3.5cm.*

£500 - 600

111

**A DIAMOND SET BROOCH**

The foliate scrolled bar suspending a pear-shaped drop, pavé set with graduated old brilliant-cut diamonds, white precious metal mounted, *length 3.5cm.*

£600 - 800

112

**A PAIR OF DIAMOND EAR PENDANTS**

Each elongated drop pavé set throughout with brilliant-cut diamonds, on stud fitting, mounted in white precious metal, *length 5.8cm.*

£700 - 900

113

**A 19TH CENTURY DIAMOND STAR BROOCH**

The twelve-rayed star set throughout with graduated old brilliant-cut diamonds, mounted in gold and silver, with detachable brooch fitting, *width 2.9cm.*

£600 - 700

114

**A DIAMOND SET DRESS RING**

The abstract wirework head highlighted with brilliant-cut diamonds to the centre, above a shaped and textured shank, 18ct white gold mounted, with indistinct facsimile signature, *ring size J.*

£500 - 600

115

**AN EMERALD AND DIAMOND CLUSTER RING**

The tiered circular cluster of mixed-cut emeralds, framed by a single-cut diamond set foliate border, to white precious metal mount stamped '18k', *ring size approximately J.*

£500 - 600

116

**THEO FENNEL: A DIAMOND PENDANT NECKLACE**

The rectangular bar of channel set princess-cut diamonds, suspended from a fancy-link chain, signed and hallmarked for 18ct white gold, *pendant length 2.1cm.*

£700 - 900

117

**A WHITE PRECIOUS METAL LONG CHAIN**

Composed of fancy ropetwist-links, stamped 'Pt 850', *length 90cm.*

£600 - 800

118 ≈

**A PAIR OF JADE, ONYX AND DIAMOND SET EARRINGS**

Of Art Deco design, with cabochon jade surmount, suspending barrel-shaped jade panel with diamond and onyx detail and diamond set drop below, on post fittings, with butterfly backs, (jade treated), white precious metal mounted, *length 5cm.*

£600 - 800

119 ≈

**A FIVE STONE RUBY AND DIAMOND RING AND TWO DIAMOND SET RINGS**

The first set with three rubies spaced by old-cut diamonds, in pierced scrollwork gallery setting, 18ct gold mounted, the second with brilliant-cut diamond, in eight claw setting, between diamond set shoulders, shank stamped 'plat', the third of crossover design, illusion set with brilliant-cut diamonds, 18ct gold mounted, *second ring principal diamond weight approximately 0.50ct, ring sizes K, M and M respectively. (3)*

£700 - 900

120

**A LATE VICTORIAN/EDWARDIAN OPAL AND DIAMOND CLUSTER RING**

The rectangular cabochon opal claw set within a surround of pinched collet set old brilliant-cut diamonds, gold and silver mounted, *ring head dimensions 17mm x 13mm, ring size M.*

£1,000 - 1,500

121 ≈

**A JADE PENDANT**

In the form of a band, (jade untested for treatments and enhancements), *width 8.5mm, internal diameter 1.1cm.*

£500 - 600

122 ≈

**TWO PAIRS OF JADE SET EARRINGS**

Comprising a pair of cabochon jade and diamond set earstuds, the stylised foliate mounts highlighted by brilliant-cut diamonds, on post fittings, and a pair of cabochon jade earclips, with screw-back fittings, (all jade untested for treatments and enhancements), *first earrings length 2.4cm. (2)*

£500 - 600

123 ≈

**A COLLECTION OF JEWELLERY**

Comprising a pair of jade ear pendants, each with circular surmount, suspending carved tapered rectangular panel below, (jade untested for treatments and enhancements), on screw fittings, with Chinese marks to fittings, together with a vari gem-set floral brooch, a seed pearl set First Communion bracelet, centred with a roundel depicting Our Lady, two graduated cultured pearl necklaces with diamond set clasps, and a pair of cultured pearl earstuds. (6)

£600 - 800

124

**THREE DIAMOND SET RINGS**

Comprising a diamond three stone ring, the graduated round brilliant-cut diamonds in claw setting, to shank stamped '18ct plat', a diamond dress ring, set with a trio of brilliant-cut diamonds in vertical alignment, between single-cut diamond set shoulders, also stamped '18ct plat', and an emerald and diamond half hoop ring, alternately set with step-cut emeralds and old-cut diamonds, 18ct gold mounted, *ring sizes M and O. (3)*

£500 - 600

See also illustration on page 29

125

**AN EMERALD AND DIAMOND CLUSTER RING**

The rectangular step-cut emerald within a surround of ten old brilliant-cut diamonds, between diamond set shoulders, *total diamond weight approximately 1.15ct, ring size J.*

£800 - 1,200



108

109

110

111

113

114

115

116

112

119

117

120

118

121

123 (part)

124 (part)

122

125

124 (part)

126 ≈

**A PINK TOURMALINE, RUBY AND DIAMOND NECKLACE**

Comprising four strands of faceted pink tourmaline beads, spaced by single-cut diamond set bars, to panel of pierced geometric design, set with vari-cut pink tourmalines, further single-cut diamonds and a channel of step-cut rubies, *length 42.5cm*.

£500 - 700

127 ≈

**A COLLECTION OF JEWELLERY**

Comprising a three colour precious metal panel-link bracelet, with engraved decoration and curb-link borders, a pair of ruby set foliate earstuds, a pair of 9ct gold textured abstract panel cufflinks, on baton fittings, a 9ct gold textured tie slide, a pendant on chain, and two dress studs, *bracelet length 19cm*. (8)

£600 - 800

128

**TIFFANY & CO: A DIAMOND FULL HOOP ETERNITY RING**

The slim band millegrain set with brilliant-cut diamonds, platinum mounted, signed and hallmarked, in maker's case, *ring size K*.

£500 - 700

129

**A PAIR OF DIAMOND SET CUFFLINKS**

Each oval panel decorated in relief with the profile of a maiden, adorned with flowerheads, to an old and single-cut diamond set ground, on baton fittings, stamped '14k', *panel length 1.95cm*.

£500 - 600

130

**A SAPPHIRE AND DIAMOND CLUSTER RING**

Of flowerhead design, set with seven brilliant-cut diamonds, within sapphire border, and with diamond set shoulders, 18ct white gold mounted, *ring size N*.

£600 - 800

131

**THEO FENNELL: A PLATINUM AND DIAMOND HALF HOOP RING**

The platinum band set with a uniform line of brilliant-cut diamonds, each in four claw setting, the shank with London hallmark and maker's mark 'TF', cased, *total diamond weight approximately 0.35ct, ring size K½*,

£500 - 700

By repute this ring was a special commission from Theo Fennell in 2004.

132 Ω

**A PAIR OF SAPPHIRE EARRINGS**

Each half hoop earring channel set with three rows of square step-cut sapphires, to hinged post and clip fittings, stamped '750', *length 1.65cm*.

£500 - 700

133

**A SAPPHIRE AND DIAMOND CLUSTER RING**

The tiered target cluster of circular-cut sapphires and brilliant-cut diamonds to wirework shank, white precious metal mounted, *ring size K*.

£600 - 800

134

**A PAIR OF DIAMOND HALF HOOP RINGS**

Each set to the front and sides with a half hoop of brilliant-cut diamonds, signed 'TP' and hallmarked for 18ct gold, *ring size M½*. (2)

£500 - 700

135

**A SAPPHIRE SINGLE STONE RING**

The oval mixed-cut sapphire in collet setting, to a tapered white precious metal mount, *ring size L*.

£800 - 1,200

Accompanied by a Gemlab gemstone identification report, stating that the sapphire is of Sri Lankan origin, report no. 13090343.

136

**A DIAMOND CLUSTER RING**

The snowflake cluster of baguette and brilliant-cut diamonds in claw setting, to white precious metal mount, unmarked, with unassociated Cartier case, *ring size O*.

£500 - 700

137

**A 9CT GOLD FANCY-LINK COLLAR NECKLACE**

Comprising a line of repeating stirrup-shaped links, hallmarked for London 1997, with maker's mark 'HG', *length 41cm*.

£500 - 700

138

**A 9CT GOLD IDENTITY BRACELET**

The curb-link chain with central rectangular identity panel, hallmarked, *length 21cm*.

£500 - 600

139

**A PAIR OF DIAMOND AND ONYX EARSTUDS**

Each brilliant-cut diamond claw set to a circular black onyx ground, on post and butterfly fittings, *total diamond weight approximately 0.80ct, diameter 1cm*.

£500 - 700



126



127 (part)



129



130



133



134



135



135



132



136



128

131



137

138



139

140 <sup>Y</sup>

#### **A COLLECTION OF ANTIQUE JEWELLERY**

Comprising a late 19th century seed pearl set fringe necklace with heart motifs, cased, an 18ct gold chain bracelet, a carved coral *corallium rubrum* baton-link bracelet, with locket clasp, a three row coral *corallium rubrum* bead necklace, a graduated cornelian bead necklace, a coiled serpent stickpin, in woven hairwork, with enamelled head and tail, an agate cameo stickpin, an enamelled stickpin, cased, five gold bar brooches, five rings, two pendants, and a pair of moonstone earrings, *first necklace length 38cm*. (21)

**£600 - 800**

This lot will be subject to USA Fish and Wildlife regulations if it is to be imported into the USA.

141 <sup>≈</sup>

#### **AN AGATE AND DIAMOND TORTOISE BROOCH**

The tortoise set with old brilliant and rose-cut diamonds, with a cabochon banded agate shell and cabochon ruby eyes, gold and silver mounted, *length 2.5cm*.

**£500 - 700**

142

#### **TWO 19TH CENTURY PENDANTS**

The first pear-shaped pendant with central drop set throughout with graduated old brilliant and rose-cut diamonds, the second with central cabochon turquoise drop within a diamond set surround, with scrolled surmount, *first pendant length 22mm, second 27mm*. (2)

**£500 - 600**

143

#### **A COLLECTION OF ANTIQUE AND LATER GEM SET RINGS**

Comprising an 18ct gold enamel and plaited hairwork memorial ring, the shaped panel between pierced and engraved foliate shoulders, with inscription dated 1831, a half pearl and diamond half hoop ring, an amethyst five stone ring, 15ct gold mounted, a half pearl and seed pearl panel ring, a diamond three stone ring, and two further rings, (all pearls untested for origin), *first ring size M*. (7)

**£600 - 800**

144 <sup>≈</sup>

#### **A MID 19TH CENTURY TURQUOISE SET BIRD BROOCH, A LADY'S DIAMOND SET BRACELET WATCH AND TWO RINGS**

The mid 19th century turquoise set dove brooch, carrying a similarly set forget-me-not spray in its beak, with cabochon ruby eyes, together with a lady's diamond set bracelet watch, with circular silvered dial and baton numerals, signed 'Huguenin', to case and pierced scrolled shoulders of brilliant and single-cut diamonds, on a brick-link bracelet and two gem set single stone rings, *brooch length 4.5cm, watch dial diameter 0.9cm*. (4)

**£700 - 900**

See also illustration on page 61

145

#### **A MID 19TH CENTURY TURQUOISE AND HALF PEARL SERPENT NECKLACE**

The graduated snake-link necklace with serpent's head clasp, pavé set with turquoise cabochons and half pearls, highlighted by cabochon red stone eyes, *length 41cm*.

**£800 - 1,200**

146

#### **A SENTIMENTAL ALBUM OF MEMORABILIA**

Compiled by Herbert Fitch to his wife Jeannie, comprising photographs, jewellery sketches, cards and poems, commemorating their marriage together from 1875 onwards, contained in red Morocco extra gilt folio, inscribed 'H.J.F. Forget-me-Nots J.W.F.'

**£500 - 700**

Herbert Fitch (1849-1933) served as Master of the Worshipful Company of Stationers from 1922-1923 and was a member of the Society of Lloyds. His company, Herbert Fitch & Co, were artists, designers, lithographic and letterpress printers, with premises on Bury Street in the City of London.

Herbert and Jeannie married in Highgate, London in 1875. It was Herbert's custom to present his wife with a piece of jewellery that he had designed throughout their marriage.

Herbert and Jeannie's family tomb is located in Brompton Cemetery, Kensington and Chelsea, and is Grade II listed.

See illustrations on inside back cover and back cover





140 (part)



140 (part)



140 (part)



141



142



140 (part)



143 (part)



143 (part)



140 (part)



144 (part)



145

147 ≈

**AN EARLY 20TH CENTURY SEED PEARL AND DIAMOND SET PENDANT NECKLACE AND A COLLECTION OF JEWELLERY**

The necklace suspending two seed pearl and lasque-cut diamond set tassel drops, of graduated length, below a diamond set hoop-shaped surmount, on fine trace-link chain, together with a diamond full hoop eternity ring, a sapphire and diamond full hoop eternity ring, a cornelian seal ring, two gem set bar brooches, and a cultured pearl bracelet, *necklace length 36cm. (7)*

£800 - 1,200

148 ≈

**A COLLECTION OF ANTIQUE AND LATER GEM SET RINGS**

Comprising a half pearl and diamond half hoop ring, (pearls untested for origin), a ruby and half pearl five stone ring, (one red stone later replaced), an emerald half hoop ring, with foiled closed-back settings, a cabochon garnet single stone ring, and three further gem set half hoop rings, (some stones later replaced), *first ring size L. (7)*

£800 - 1,000

149

**AN ENAMEL AND DIAMOND BROOCH AND A DIAMOND SET NECKLACE CENTREPIECE**

The brooch composed of a white and blue spotted enamel heart with rose diamond set ribbon bow surmount, and later mounted to the centre with a bee with rose diamond body and wings, the abdomen of black and yellow enamel, together with a necklace centrepiece with central scrolled link between rectangular sections, set throughout with old brilliant-cut diamonds, *brooch length 2.6cm. (2)*

£500 - 700

150 ≈

**A COLLECTION OF BROOCHES**

Comprising a rose-cut diamond set partridge brooch, to uniform bar mount, an enamel and rose-cut diamond set RAF wings brooch, a jade baton brooch, (jade untested for treatments and enhancements), and two shell cameo brooches, *first brooch length 4.5cm. (5)*

£500 - 700

151

**A 19TH CENTURY DIAMOND BROOCH**

Of oval design, with two opposing cornucopia motifs, set throughout with graduated old-cut diamonds in individual pinched collet settings, gold and silver mounted, brooch fitting adapted, *width 4.2cm.*

£600 - 800

152 ≈

**A LARGE COLLECTION OF JEWELLERY AND COSTUME JEWELLERY**

To include a ruby and diamond five stone ring, stamped '18ct', a sapphire and diamond full hoop eternity ring, (sapphires untested for natural versus synthetic origin), a diamond five stone ring, a ruby and diamond three stone crossover bar brooch, inscribed, a diamond set panel brooch, a 9ct gold engraved hinged bangle, further items of jewellery, and a collection of costume jewellery and watches, *first ring size S.*

£500 - 700

153

**A 19TH CENTURY DIAMOND FIVE STONE RING**

The graduated old brilliant-cut diamonds in pinched collet settings, to reeded shoulders, mounted in gold and silver (shank worn), *total diamond weight approximately 1.50ct.*

£600 - 800

154

**A DIAMOND HALF HOOP RING**

The flat section band inset with a line of nine brilliant-cut diamonds, 18ct white gold mounted, *total diamond weight approximately 1.10ct, ring size N (leading edge).*

£500 - 600

155 ≈

**A COLLECTION OF 19TH CENTURY AND LATER JEWELLERY**

Comprising a vari gem-set REGARD brooch, the shaped rectangular two colour panel decorated with foliage and scrolls, glazed verso, with later fitting, a paste and half pearl memorial brooch/pendant, inscribed and dated 1816, with later fitting, a cabochon garnet and white enamel oval locket pendant, a citrine and half pearl cluster brooch, (pearls untested for origin), with later fitting, and a cabochon garnet and gilt metal pendant, *first brooch length 3cm. (5)*

£600 - 900

156

**A DIAMOND SINGLE STONE RING**

The old brilliant-cut diamond in raised claw setting, to white precious metal mount stamped '18ct plat', *diamond weight approximately 1.10ct, ring size Q.*

£1,000 - 1,500

157

**A TRIPLE ROW CULTURED PEARL NECKLACE**

Comprising three strands of uniform cultured pearls, each measuring approximately 7.2mm in diameter, to a similarly set panel clasp with ropetwist borders, stamped 'K14', *length 37.5cm.*

£500 - 600

147 (part)



150 (part)



148



149



147 (part)



151



152 (part)



155 (part)



153



124 (part)



156



154



157

158

#### **A COLLECTION OF LATE VICTORIAN JEWELLERY**

Comprising a broad 9ct gold gate-link bracelet, to padlock clasp, a narrower example, clasp stamped '15', a pair of drop ear pendants with applied bead and wirework detail, a 18ct gold mounted bloodstone inset seal ring, two Scottish brooches, a choker necklace of claw set graduated oval amethysts, and an amethyst and seed pearl cluster ring, *first bracelet length 19cm.* (8)

**£600 - 800**

159

#### **A NATURAL PEARL NECKLACE**

Comprising a single strand of slightly graduated natural pearls, measuring approximately 3.8mm to 4.2mm in diameter, spaced by smaller untested pearls, *length approximately 44cm.*

**£600 - 800**

Accompanied by a report issued by Gemmological Certification Services, stating that 64 pearls are of natural saltwater origin, the remaining pearls untested, report no. 5775-1429, dated 20th February 2015.

160

#### **A CITRINE NÉGLIGÉE PENDANT AND TWO GENTLEMAN'S DRESS SETS**

The pendant suspending two graduated oval-cut citrine drops, below a similarly cut citrine surmount, on fine trace-link chain, in fitted case signed 'Frazer & Haws', together with a set of six buttons, each circular panel of hammered finish, stamped '9ct', in fitted case signed 'Jays, London', and a set of five dress studs, of matched design, in fitted case signed 'Arthur Ricketts, Lavender Hill', *pendant length 4.9cm.* (3)

**£500 - 600**

161

#### **TWO DIAMOND CLUSTER RINGS**

The first claw set with brilliant-cut diamonds throughout, with central stone in raised setting, to 18ct yellow gold shank, the second ring millegrain set, with central old-cut diamond and outer border of single-cut diamonds, to yellow precious metal shank stamped '18ct', *first ring size N, second ring size O.* (2)

**£500 - 700**

162

#### **A DIAMOND THREE STONE RING**

The principal emerald-cut diamond claw set between two brilliant-cut diamonds, 18ct gold mounted, *total diamond weight approximately 0.70ct, ring size K.*

**£500 - 700**

163

#### **A SAPPHIRE AND DIAMOND CLUSTER RING**

The oval mixed-cut sapphire claw set within a surround of brilliant-cut diamonds, 18ct gold mounted, with maker's mark 'LJ', *ring size J.*

**£500 - 700**

164

#### **A DIAMOND STONE DIAMOND RING**

The brilliant-cut diamond in eight claw setting between foliate shoulders, shank stamped '18ct plat', *diamond weight approximately 0.60ct, ring size K.*

**£300 - 500**

165

#### **A MID 19TH CENTURY AMETHYST AND DIAMOND BROOCH**

Of rectangular scrolled form, centred with a fancy-cut amethyst, within flowerhead and scroll surround, with old-cut diamond highlights throughout, *length 3.2cm.*

**£500 - 700**

166

#### **A DIAMOND CROSS PENDANT**

The Latin cross of channel set baguette-cut diamonds, framed by brilliant-cut diamonds, 18ct white gold mounted, *length 4.1cm.*

**£500 - 700**

167

#### **A HEART-SHAPED AMETHYST AND DIAMOND PENDANT ON DIAMOND SET CHAIN**

The amethyst claw set above a diamond set surround and bow surmount, on spectacle set diamond chain, ring and bolt clasp stamped '750', *pendant length 3.5cm.*

**£1,200 - 1,400**

168

#### **A SMALL COLLECTION OF JEWELLERY**

Comprising a step-cut emerald and half pearl set bracelet, of curb-link design, the clasp with French control marks, together with an amethyst and seed pearl set heart pendant on chain, a sovereign set pendant on chain, and a gem set bar brooch, *bracelet length approximately 17cm.* (6)

**£700 - 900**

169

#### **A DIAMOND SINGLE STONE RING**

The round brilliant-cut diamond in six claw setting, between single-cut diamond set shoulders, white precious metal mounted, *principal diamond weight approximately 0.70ct, ring size J½.*

**£500 - 600**

170

#### **A DIAMOND FIVE STONE RING**

The scroll pierced mount set with graduated old-cut diamonds, inscribed to shank, *total diamond weight approximately 1.20ct, ring size O.*

**£500 - 700**



158 (part)



161 (part)



162



163



161 (part)



160 (part)

159



164



301 (part)

166



165



167



168 (part)



169



170



168 (part)



171 Y

**A SMALL COLLECTION OF JEWELLERY**

To include a 19th century coral *corallium rubrum* brooch, modelled as a cherub amidst foliage, fruit and flowers, with three similarly carved drops below, cased, a lady's 18ct gold cased wristwatch, by Rolex, inscribed to back, a lady's diamond set cocktail wristwatch, a graduated coral *corallium rubrum* bead necklace, a 19th century micro-mosaic panel brooch, depicting Pliny's doves, three pairs of gold cufflinks, and a small locket pendant, *first brooch length 5.9cm*.

**£600 - 800**

This lot will be subject to USA Fish and Wildlife regulations if it is to be imported into the USA.

172

**A GRADUATED PEARL NECKLACE WITH GEM SET CLASP**

The single strand of graduated pearls, measuring approximately 2.4mm to 4.6mm in diameter, to a navette-shaped diamond and demantoid garnet set clasp, *length 47.5cm*.

**£700 - 900**

Accompanied by a report issued by Gwilym M. Jones, stating that the necklace contains natural pearls, report no. 0803/09, dated 9th March 2008.

173

**AN 18CT GOLD AND HALF PEARL BRACELET**

The curb-link bracelet with later added shaped panel, highlighted with half pearls, accompanied by unassociated Goldsmiths & Silversmiths Co. Ltd. case, *length 19.5cm*.

**£600 - 800**

174 ≈

**A SMALL COLLECTION OF JEWELLERY**

Including a pair of Victorian cabochon garnet, half pearl and turquoise set ear pendants, on wire fittings, a pair of amethyst drop ear pendants, on similar fittings, together with six vari gem-set bar brooches, four vari gem-set rings, a wedding band, and a 9ct gold gentleman's wristwatch head, *first ear pendants length 3.55cm*. (14)

**£600 - 800**

175

**A BIRD PAPER KNIFE**

The blade of polished cornelian, with mount modelled as a bird, its head resting on its wing, the reverse bearing spurious marks for Fabergé, cased, *length 8.2cm*.

**£300 - 500**

176

**AN ART DECO DIAMOND DOUBLE CLIP BROOCH**

The pierced geometric design set throughout with brilliant and single-cut diamonds, white precious metal mounted, with original brooch frame, *length 4.8cm*.

**£600 - 800**

177

**THREE PAIRS OF EARRINGS, TWO RINGS AND AN ENAMEL BUCKLE**

Comprising a pair of ear pendants, each pear-shaped drop suspended from a pierced domed circular surmount, together with two pairs of earstuds, an amethyst ring, an onyx set ring and a coloured enamel set buckle, *first earrings length 3.3cm, first ring size O½*. (6)

**£500 - 600**

178

**A YELLOW SAPPHIRE SET RING**

The oval mixed-cut yellow sapphire, claw set within a rectangular-shaped frame, yellow precious metal mounted, *ring size J*.

**£300 - 400**

179

**A DIAMOND SINGLE STONE RING AND A YELLOW SAPPHIRE AND DIAMOND CLUSTER RING**

The first claw set with an old-cut diamond of yellow tint, (diamond untested for natural colour), to shank stamped '18ct', the second centred with an oval mixed-cut yellow sapphire, to single-cut diamond set border, *ring sizes N and O respectively*. (2)

**£700 - 1,000**



173

172

171 (part)

171 (part)

174 (part)

176

179

178

177 (part)

175

180

**AN EMERALD BEAD NECKLACE**

Comprising a single strand of slightly graduated emerald beads, *length 40cm.*

**£300 - 400**

181 ≈

**A JADE AND DIAMOND PLAQUE CLIP BROOCH**

The carved jade plaque depicting a tree shrew clamouring up a bamboo branch, (jade damaged), within a scrolling surmount, set with single and brilliant-cut diamonds, *total diamond weight approximately 0.75ct, length 5.2cm.*

**£1,000 - 1,500**

Accompanied by a report issued from Gemmological Certification Services, stating that the panel is A-jade, with no indications of impregnation observed, report no. 5775-921, dated 13th November 2014.

182 ≈

**A JADE PENDANT NECKLACE**

The shaped rectangular jade panel drop with pierced and carved decoration, below an openwork flowerhead panel and circular jade panel surmount, suspended from a fine trace-link chain, the white precious metal mount stamped '9ct', (jade untested for treatments and enhancements), *pendant length 5.4cm.*

**£500 - 600**

183

**AN ART DECO STYLE OPAL AND DIAMOND PENDANT ON CHAIN**

Composed of collet set brilliant-cut diamond surmount, with pierced and millegrain bordered diamond set vertical panel below, suspending a tear-drop shaped cabochon opal in four claw setting, two colour precious metal mounted, on white precious metal belcher-link back chain, spectacle set at intervals with brilliant-cut diamonds, the ring and bolt clasp stamped '750', *pendant length 5.8cm.*

**£1,500 - 1,800**

184

**A PEARL AND GEM SET NECKLACE**

The single strand of baroque pearls with beaded links between, spaced by alternate emerald and pink tourmaline beads, (pearls untested for origin), *length 42cm.*

**£500 - 700**

185

**A BLACK OPAL AND DIAMOND CLUSTER RING**

The oval cabochon black opal claw set within a border of single-cut diamonds, to shank stamped '18ct & plat', *ring size N.*

**£500 - 600**

186

**AN EMERALD AND DIAMOND CLUSTER RING**

The central oval mixed-cut emerald within a border of brilliant-cut diamonds, between trifurcated shoulders, yellow precious metal mounted, shank stamped '18ct', *ring size P.*

**£400 - 600**

187

**A DIAMOND CLUSTER RING**

The flowerhead cluster of round brilliant-cut diamonds in claw setting, between similarly cut diamond set shoulders, platinum mounted, *total diamond weight approximately 1.90ct, ring size K.*

**£600 - 800**

188

**AN EMERALD AND DIAMOND CLUSTER RING**

The square step-cut emerald with canted corners, claw set to an undulating crossover surround of tapered baguette-cut diamonds, white precious metal mounted, stamped '750', *ring size M.*

**£400 - 600**

189

**AN EMERALD AND DIAMOND CLUSTER RING**

The rectangular step-cut emerald claw set within a border of brilliant-cut diamonds, 18ct gold mounted, signed and cased, *ring size L.*

**£500 - 600**

190 ≈

**A COLLECTION OF FOUR GEM SET DRESS RINGS**

Comprising a sapphire and diamond set flowerhead cluster ring, the white precious metal mount stamped '18ct & Pt', a cabochon opal and diamond set cluster ring, stamped '18ct', an emerald and diamond set rectangular panel ring, stamped '18ct plat', and a cushion-shaped gem set cluster ring, with later sizing band, *first ring size M.* (4)

**£600 - 800**

191

**AN OPAL BEAD NECKLACE**

Composed of graduating spherical opal beads, displaying colour play of greens and reds, to a diamond set clasp, white precious metal mounted, *length 52cm.*

**£800 - 1,000**

192 ≈

**A RUBY AND DIAMOND BAR BROOCH AND A DIAMOND SINGLE STONE BAR BROOCH**

The first alternately set with cushion-shaped rubies and old-cut diamonds, spaced by lasque-cut diamond points, the second with an old-cut diamond in claw setting, *lengths 3.4cm and 3.5cm respectively.* (2)

**£800 - 1,000**

193

**AN OPAL AND DIAMOND THREE STONE RING AND TWO WEDDING BANDS**

The first claw set with a circular cabochon opal between two old-cut diamonds, to shank stamped '18ct', together with a 22ct gold wedding band, and a wide 18ct gold wedding band, *first ring size K.* (3)

**£300 - 500**

194

**A DIAMOND SET DRESS RING AND A PAIR OF EMERALD AND DIAMOND EARSTUDS**

The dress ring with a tapered concave head, pavé set with graduated brilliant and old-cut diamonds, white precious metal mounted, the earstuds with circular-cut emeralds and single-cut diamonds, also white precious metal mounted, *ring size J½.* (2)

**£300 - 500**

195

**AN OPAL, DIAMOND AND PEARL BRACELET AND TWO SEED PEARL COLLAR NECKLACES**

The bracelet composed of hemispherical opal beads, with faceted spacers and pearls between, to an oval cabochon opal and rose-cut diamond set cluster clasp, together with a seed pearl double strand collar necklace, with blue enamel and half pearl clasp, and a further seed pearl collar necklace, (all pearls untested for origin), *bracelet length 20.5cm.* (3)

**£600 - 800**





181

180

182

183

185

186

187

184

188

189

190 (part)

193 (part)

191

192 (part)

194 (part)

195

196

**A TOURMALINE SET LAVALIER NECKLACE**

Comprising a continuous line of openwork scrolled links, spaced by beaded belcher links, suspending two polished oval watermelon tourmaline drops below, stamped '18', *length 140cm*.

£1,000 - 1,500

197

**A DIAMOND PENDANT NECKLACE**

The openwork foliate panel of rose-cut diamonds in closed foil-backed settings, suspending three similarly set pear-shaped drops below, to a flattened fancy-link back chain, *length 35cm*.

£800 - 1,000

198 ≈

**A RUBY AND DIAMOND DRESS RING**

The crossover mount designed as a stylised leaf, claw set with four oval-cut rubies to a pavé set ground of brilliant-cut diamonds, white precious metal mounted, *ring size L*.

£600 - 800

199

**A SAPPHIRE BROOCH AND A PAIR OF SAPPHIRE EARCLIPS**

The brooch of tiered abstract cluster design, set with cabochon sapphires in scatter formation, stamped '18k', together with a pair of earclips, of textured foliate design, similarly set with cabochon sapphires, *brooch length 4cm*. (2)

£500 - 700

200 ≈

**A RUBY, SAPPHIRE AND DIAMOND SET BIRD BROOCH**

Designed as a phoenix in flight, the body pavé set with circular-cut rubies, with a similarly cut sapphire eye, the tail feathers accented by single-cut diamonds, *width 7.3cm*.

£300 - 500

201

**VASARI: A PAIR OF GEM SET EARRINGS AND A MATCHED RING**

Each earring with a collet set cushion-shaped pink tourmaline within an onyx surround, with a similarly set cushion-shaped green peridot, signed 'Vasari', accompanied by a ring of conforming design, unsigned, *earrings length 2.7cm, ring size L½ (leading edge)*. (2)

£700 - 900

202

**KIKI MCDONOUGH: A CITRINE AND PERIDOT DRESS RING**

The collet set oval-cut citrine, between similarly set pear-shaped peridot shoulders, to an 18ct yellow gold band, with maker's mark 'KMCD', in signed case, *ring size L*.

£700 - 900

203

**A DIAMOND FIVE STONE RING**

The graduated old-cut diamonds inset to an 18ct gold mount, *ring size N*.

£500 - 700

204

**A DIAMOND THREE STONE RING**

The graduated old brilliant-cut diamonds collet set in white precious metal, to a yellow precious metal shank stamped '18ct', *total diamond weight approximately 1.80ct, ring size M*.

£700 - 900

205

**AN EMERALD, DIAMOND AND GEM SET RING**

The fluted hardstone head with central oval cabochon emerald and brilliant-cut diamond cluster, to tapered fluted hoop, white precious metal mounted, *ring size O*.

£700 - 800

206

**A PAIR OF EMERALD AND DIAMOND SET EARRINGS**

Each a tiered abstract spray of navette-shaped emeralds and brilliant-cut diamonds, on post and hinged clip fittings, stamped '750', *length 2.2cm*.

£300 - 400

207

**A DIAMOND CLUSTER RING**

The circular wirework cluster set with graduated brilliant-cut diamonds, above scroll pierced gallery, white precious metal mounted, stamped '18k', *ring size M*.

£600 - 700

208

**A SMOKY QUARTZ AND DIAMOND CLUSTER RING**

The large oval mixed-cut smoky quartz, claw set within a millegrained border of brilliant-cut diamonds, between similarly set scrolled shoulders, white precious metal mounted, stamped '750', *ring size R*.

£650 - 750

209 ≈

**A CULTURED PEARL, RUBY AND DIAMOND RING AND EARCLIPS SUITE**

Each of spiral cluster design, centred with a cultured pearl to brilliant-cut diamond and oval-cut ruby borders, white precious metal mounted, *ring size M, earclips length 2.4cm*. (2)

£800 - 1,200



196



197



198



199



200



201



202



203



204



205



206



209



207



208



210

**AN OPAL AND DIAMOND SET PENDANT, BROOCH AND EARRINGS SUITE**

Each panel designed as a stylised scrolled ribbon with textured decoration, highlighted with cabochon opals and old-cut diamonds, suspending similarly set foliate drops below, the pendant with ropetwist-link chain, the earrings on later post and butterfly fittings, *pendant length 6cm, brooch width 3cm.* (3)

£600 - 800

211

**AN EARLY 20TH CENTURY RUSSIAN SAPPHIRE AND DIAMOND SET BROOCH AND A GARNET SET BROOCH**

The first brooch of openwork stylised sinuous form, asymmetrically set with a cushion-shaped sapphire and a rose-cut diamond, with 56 standard kokoshnik mark for St Petersburg, maker's mark possibly 'JL', together with a garnet set brooch, of foliate design, with later Russian marks, *lengths 3.4cm and 4cm respectively.* (2)

£500 - 700

212 ≈

**A RUBY AND HALF PEARL SET BRACELET**

The hinged bangle of tapered trifurcated design, set to the front with flowerhead clusters of oval-cut rubies and half pearls, framed by similarly set foliage, stamped '22c', (pearls untested for origin), *inner diameter 5.4cm.*

£800 - 1,200

213

**A COLLECTION OF ANTIQUE AND LATER JEWELLERY**

Comprising an old-cut diamond single stone ring, a Victorian hinged oval bangle, applied with ropetwist wirework and bead decoration, a further hinged bangle, of crossover design with central seed pearl detail, a half pearl set ring, (one pearl deficient, all pearls untested for origin), a 19th century memorial ring, inscribed, and a gem set panel ring, *first ring total diamond weight approximately 0.80ct, size O.* (6)

£600 - 900

214

**A SAPPHIRE AND DIAMOND BANGLE AND THREE SAPPHIRE AND DIAMOND RINGS**

The hinged oval bangle of openwork ropetwist design, inset with an old-cut diamond and two square step-cut sapphires, together with a sapphire and diamond half hoop ring, stamped '18ct', and two sapphire and diamond cluster rings, *bangle inner diameter 6cm.* (4)

£700 - 900

215 ≈

**A RUBY AND DIAMOND PANEL RING AND A PEARL AND DIAMOND RING**

The first of octagonal panel design, centred with a step-cut ruby to double row border of single-cut diamonds, stamped 'plat', the second set with a baroque pearl, between single-cut diamond set shoulders, stamped '18ct', (pearl untested for origin), *both rings size K½.* (2)

£800 - 1,000

216 ≈

**A RUBY AND DIAMOND DRESS RING**

The oval mixed-cut ruby claw set below a wishbone-shaped hoop, millegain set with brilliant-cut diamonds, and cluster of old-cut diamonds above, two colour precious metal mounted, *ring size L½.*

£800 - 1,200

217 ≈

**A RUBY AND DIAMOND CLUSTER RING**

The oval-cut ruby collet set within a surround of brilliant-cut diamonds, mounted in 18ct gold, *total diamond weight approximately 1ct, ring size P.*

£1,000 - 1,500

218 ≈

**A CULTURED PEARL BRACELET WITH GEM SET CLASP**

Comprising three strands of uniform cultured pearls, to a textured flowerhead clasp, with a brilliant-cut diamond and navette-shaped ruby cluster, *length 18cm.*

£300 - 500

219

**A DIAMOND SINGLE STONE RING**

The round brilliant-cut diamond in claw setting, to shank stamped '18ct & plat', *diamond weight approximately 1.60ct, ring size P.*

£1,000 - 1,500





210



211



212



213 (part)



214 (part)



215 (part)



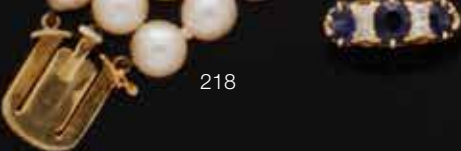
217



216



215 (part)



218



219



213 (part)



214 (part)



214 (part)



220 (part)

220

**A MID 19TH CENTURY SEED PEARL PART-SUITE**

Comprising a corsage brooch designed as an arching fuschia spray, with flowerheads and buds suspended below, a floral and foliate brooch, suspending a pendant drop on seed pearl connecting chains, a further scrollwork brooch, two smaller pendants, and a pair of ear pendants (lacking mounts), contained in associated fitted box (all pearls untested for origin), *first brooch length 12.5cm*.

£600 - 800



221

221

**A MID 19TH CENTURY SEED PEARL NECKLACE**

Composed of graduated oval and circular seed pearl cluster panels, suspending central pendant drop and three seed pearl swags below, to rectangular panel clasp engraved with foliate scrolls, (all pearls untested for origin), *length 39.5cm*.

£800 - 1,200



222 (part)





220 (part)

222

**A MID 19TH CENTURY SEED PEARL NECKLACE**

Composed of seed pearl set floral and foliate panels, with fine seed pearls links between, to rectangular box clasp, (two chain links detached), contained in fitted case, silk signed 'Ollivant & Botsford & Co, Goldsmiths, Manchester', together with an unassociated seed pearl set pin, *necklace length 42cm. (2)*

£600 - 800

223

**A MID 19TH CENTURY SEED PEARL BROOCH**

The openwork panel modelled as a chrysanthemum flowerhead of graduated seed pearls, issuing a similarly set foliate spray, with acorn and oak leaf drop below, (all pearls untested for origin), *length 9.8cm.*

£700 - 800



223



220 (part)

224

**A DIAMOND TWO STONE RING AND TWO SAPPHIRE AND DIAMOND DRESS RINGS**

The first of crossover design, set with two round brilliant-cut diamonds, to shank stamped '750k', together with a half hoop ring, also of crossover design, set with baguette-cut sapphires bordered by brilliant-cut diamonds, and a further dress ring, set with vari-cut sapphires and brilliant-cut diamonds in scatter formation, below a raised channel of smaller brilliants, *ring sizes R½, O½ and P respectively*. (3)

£700 - 900

225

**A SAPPHIRE AND DIAMOND CLUSTER RING**

The tiered oval cluster of vari-cut sapphires and brilliant-cut diamonds, to white precious metal mount stamped '18ct plat', *ring size K½*.

£500 - 600

226

**A COLLECTION OF NECKLACES**

Comprising two 9ct gold paper-link chains, a 9ct gold belcher-link chain, a 9ct gold fancy-link chain, two ropetwist-link chains, a baton-link chain, and two 9ct gold pendants, suspended from a gilt metal chain. (8)

£600 - 800

227

**THREE GEM SET RINGS**

Comprising a five stone diamond ring, with scrolled gallery, an opal and diamond cluster ring, and a sapphire and diamond inset band ring, together with a pair of gas-pipe hoop earrings, *first ring size P½*. (4)

£600 - 800

228

**A COLLECTION OF ANTIQUE AND LATER JEWELLERY**

Comprising a diamond single stone ring, the old-cut diamond in gypsy setting, 18ct gold mounted, an engine-turned propelling pencil, stamped '9ct', inscribed, an oval shell cameo brooch, depicting the Three Graces, a 22ct gold engraved wedding band, a slim white metal wedding band, a pair of 9ct gold foliate engraved cufflinks, a pair of earrings, and two dress studs, *first ring size S*. (9)

£500 - 600

229 ≈

**BOODLES: A DIAMOND SET 'HUG' RING AND THREE FURTHER RINGS**

The first ring with an openwork heart-shaped panel, highlighted by graduated brilliant-cut diamonds, to signed 18ct gold shank, cased, together with a diamond set dress ring, by Leo Pizzo, the trifurcated hoop with a crossover band of brilliant-cut diamonds, 18ct gold mounted, a ruby and diamond set half hoop ring, 9ct gold mounted, and an amethyst single stone ring, *first ring size Q (leading edge)*. (4)

£500 - 700

230 Ω

**A COLLECTION OF FIVE VARI GEM-SET RINGS**

Comprising a mabe pearl and diamond set dress ring, of abstract wirework design, signed 'MFB', a cultured pearl and vari gem-set dress ring, also signed 'MFB', two synthetic colour change corundum set dress rings, and a lion's mask ring, *first ring size M*. (5)

£800 - 1,200

231 ≈

**A RUBY AND DIAMOND RING AND A TURQUOISE AND DIAMOND BROOCH**

The bombe dress ring of whorl design, centred with a cluster of rubies and diamonds, to shank stamped 'K18', the brooch designed as a wavy ribbon around a central spray of cabochon turquoise and baguette-cut diamonds, mounted in 18ct gold, hallmarked for London 1963, with maker's mark 'HG', *ring size L, brooch length 4cm*. (2)

£500 - 700

232

**A CULTURED PEARL CHOKER NECKLACE WITH SAPPHIRE AND DIAMOND CLASP**

Comprising three graduated strands of cultured pearls, to a stylised flowerhead clasp, centred with a cabochon sapphire and brilliant-cut diamond cluster, to textured petals with further sapphire highlights, yellow precious metal mounted, *shortest length 33.5cm*.

£600 - 800

233

**A CULTURED PEARL AND DIAMOND DRESS RING AND A DIAMOND SINGLE STONE RING**

The first centred with a baroque cultured pearl of greyish tint, to pierced head and scrolled shoulders of rose and lasque-cut diamonds, the second with a round brilliant-cut diamond in claw setting, to a reeded white precious metal band, *ring sizes I and L*.

£900 - 1,100

234

**A 9CT GOLD FANCY-LINK BRACELET AND A CHARM BRACELET**

The first of three colour brick-link design, with fancy-link borders, the second a curb-link bracelet, with 9ct gold padlock clasp, suspending assorted charms, to include a red enamel post box, *first bracelet length 18.5cm*. (2)

£600 - 800



224



225

226 (part)



229 (part)



228 (part)

227



230 (part)



231



233



232

234





243

235

#### A SMALL COLLECTION OF JEWELLERY

Comprising a paste necklace, the fringe of graduated scrolled panels set with white pastes in foiled closed-back settings, to similarly set back chain, a pair of Victorian ear pendants, decorated with acorns and oak leaves, on wire fittings, a diamond bar brooch, the tapered bar with a line of rose and lasque-cut diamonds, and a blue stone set stick pin, with writhing serpent terminal, *necklace length 43cm. (4)*

£500 - 600

236

#### AN 18CT GOLD BRACELET AND A COLLECTION OF FOB SEALS

The curb-link bracelet suspending a collection of twelve 19th century and later hardstone seal fobs, together with a sovereign pendant, dated 1958, and a 9ct gold golf bag charm, *bracelet length 18.5cm.*

£700 - 900

237

#### A CHARM BRACELET

The double row curb-link bracelet stamped '9 .375', suspending a collection of novelty charms, to include a globe and a miner's head, and four coin fobs, comprising two George V half sovereigns, dated 1913 and 1918, a full sovereign, dated 1914, and a Russian 10 rubles, dated 1899, *length 17cm.*

£900 - 1,200

238

#### AN EMERALD AND DIAMOND CLUSTER RING

The shaped rectangular cluster centred with three graduated step-cut emeralds, to a single-cut diamond border, two colour precious metal mounted, *ring size L½.*

£500 - 600

239

#### A SAPPHIRE AND DIAMOND SET RING

The cushion-shaped sapphire collet set between two rose-cut diamonds, in foiled closed-back settings, to mount incorporating Georgian shank, dated 1760, (adapted), *ring size N.*

£500 - 700

240

#### A SAPPHIRE AND DIAMOND PANEL RING

The square panel with central baguette-cut sapphire, (sapphire untested for natural versus synthetic origin), to border of graduated old-cut diamonds, above pierced gallery, *ring size M½.*

£700 - 900

241 Y

#### A COLLECTION OF ANTIQUE AND LATER JEWELLERY

To include a late Victorian enamel miniature stickpin, by William Bishop Ford (1832 - 1922), the oval panel depicting a fox's head in profile, indistinctly signed to reverse, a pearl single stone stickpin, (pearl untested for origin), cased, a collection of further stickpins, a pair of French lorgnettes, a paste set haircomb, further paste items, a pair of banded agate cufflinks, three loose agate panels, and further items, *first stickpin panel width 2.3cm.*

£300 - 500

This lot will be subject to USA Fish and Wildlife regulations if it is to be imported into the USA.

242

#### A HALF PEARL AND DIAMOND SET BRACELET AND A SMALL COLLECTION OF JEWELLERY

The gate-link bracelet with central pierced panel, highlighted with a half pearl between two single-cut diamonds, together with a sapphire and seed pearl brooch/pendant, of lozenge-shaped design, a gem set and half pearl memorial brooch, with inscription dated 1833, later fittings, a quizzing glass, and two bar brooches, *bracelet length 19cm. (6)*

£700 - 900

243

#### A VICTORIAN ENAMEL AND HALF PEARL SWAG NECKLACE

The fancy-link necklace with graduated chain swags, suspending three circular drops, each centred with a turquoise blue enamel and half pearl star, to ropetwist decorated border and glazed verso, (shortened, later fittings), in fitted case, *length 37cm.*

£700 - 800





235 (part)



238



240



239



241 (part)



241 (part)



242 (part)



237

236



241 (part)



242 (part)

244

**AN EARLY 20TH CENTURY SAPPHIRE AND SEED PEARL PENDANT NECKLACE**

The openwork laurel wreath and ribbon bow panel, millegrain set with lasque-cut diamonds and seed pearls, suspending two cushion-shaped sapphire drops, below trace-link surmount and back chain, in case signed 'C. Packer & Co, London', (pearls untested for origin), *pendant length 6.5cm.*

£600 - 800

245

**A SAPPHIRE AND DIAMOND THREE STONE RING**

The cushion-shaped sapphire claw set between two old-cut diamonds, to shank stamped '18ct plat', *ring size M.*

£500 - 600

246

**A SAPPHIRE AND DIAMOND CLUSTER RING**

The central round mixed-cut sapphire within a border of brilliant-cut diamonds, within pierced work setting, white precious metal mounted, *ring size O.*

£500 - 600

247

**A VICTORIAN GOLD COLLAR NECKLACE**

Composed of fancy repeating bead and ropetwist wirework links, to tongue clasp, indistinctly marked, *length 46cm.*

£800 - 1,200

248

**A FANCY-LINK NECKLACE WITH ENAMEL AND GEM SET PENDANT**

The double strand plaited-link chain with circular turquoise blue enamel slider pendant, highlighted with a half pearl and rose-cut diamond set star motif, (pearl untested for origin), *length 94cm.*

£400 - 600

249 ≈

**A DIAMOND AND GEM SET INSECT PENDANT**

Centred with a diamond and sapphire cluster thorax between diamond set wings, to a diamond and aquamarine abdomen, with ruby eyes, on fine trace-link back chain, *pendant width 5.3cm.*

£1,100 - 1,200

250

**A DIAMOND HORSE-SHOE SHAPED PENDANT ON CHAIN**

Set throughout with graduating brilliant-cut diamonds, white precious metal mounted, on fine trace-link chain, clasp stamped '750', *total diamond weight 1.70ct, pendant length 1.5cm.*

£1,100 - 1,200

251

**A PAIR OF DIAMOND CLUSTER EARSTUDS**

Each set throughout with brilliant-cut diamonds, on post fittings, two colour precious metal mounted, *total diamond weight approximately 1.25ct, diameter 9mm.*

£500 - 600

252

**A PAIR OF PEARL AND AMETHYST EAR PENDANTS**

Each cushion-shaped amethyst drop in closed foil-backed setting, framed by pearls and ropetwist wirework borders, surmounted by a triple strand pearl suspension and similarly set cluster panel, on later screw-back fittings, *length 4.6cm.*

£500 - 600

253

**A 19TH CENTURY ENAMEL AND GEM SET CRUCIFIX PENDANT ON CHAIN**

Of revivalist form, depicting the crucifixion, with foiled table-cut gem set terminals, the reverse decorated with the Instruments of the Passion, to include the crown of thorns, the cock, the dice, the pillar or column and the lance, in vari-coloured enamels to a white enamel ground, suspending three pearl drops below, (pearls untested for origin), surmounted by a looped ribbon panel with black enamel decoration and central rectangular-cut diamond, on later box-link chain, *pendant length 6.3cm.*

£400 - 600

The Instruments of the Passion comprise objects used in the Crucifixion of Christ and symbolic emblems related to his arrest and trial. Many of the Instruments of the Passion may be found in depictions of the Crucifixion, whilst others are present in narrative episodes leading up to the death of Christ.

254

**A CULTURED PEARL AND DIAMOND RING**

The central cultured pearl measuring approximately 9.8mm in diameter, between pierced foliate shoulders of graduated brilliant and single-cut diamonds, white precious metal mounted, *ring size N.*

£400 - 600

255

**A BLACK CULTURED PEARL AND DIAMOND SUITE**

Comprising a pendant, ring and earstuds, each set with a single black cultured pearl, within scrolling diamond set detail, white precious metal mounted, *ring size O, pendant length 1.6cm.*

£500 - 600







256

256A

256

#### **A DIAMOND FLOWER NECKLACE CENTREPIECE**

Comprising a spray of flowerheads, each centred with a brilliant-cut diamond, to petals and leaves set with rose-cut diamonds, the reverse with two clasp fittings, one to each side, *length 5cm*.

**£500 - 600**

256A

#### **A 19TH CENTURY DIAMOND FLORAL SPRAY BROOCH**

The central old brilliant-cut diamond within a surround of rose-cut diamond petals, mounted en-tremblant, to a foliate mount set with similarly-cut diamonds, *total weight of old brilliant-cut diamonds approximately 0.55ct, length 8cm*.

**£500 - 700**

257

#### **A CULTURED PEARL NECKLACE AND A PAIR OF SAPPHIRE EARCLIPS**

The single strand necklace comprising uniform cultured pearls of pink, grey, yellow and white hues, to diamond set clasp, stamped '750', (pearls untested for treatments), together with a pair of sapphire and white stone cluster earclips, *necklace length 44cm*. (2)

**£700 - 900**

258

#### **AN AMETHYST SET FLOWER BROOCH**

Naturalistically modelled as a flowerhead, with pierced and textured petals, the moveable stamen highlighted with fancy-cut amethysts, two colour precious metal mounted, *length 4.1cm*.

**£500 - 700**

259 ≈

#### **A CULTURED PEARL NECKLACE AND TWO PAIRS OF EARSTUDS**

The necklace comprising two strands of graduated cultured pearls, together with a pair of jade and diamond earstuds, on post and butterfly fittings, (jade untested for treatments and enhancements), and a pair of cultured pearl earstuds, *necklace length 39cm*. (3)

**£500 - 700**

260

#### **BIJAN: A DIAMOND SET BAND RING**

Comprising two hinged bands of textured finish, opening to reveal channel-set sides of brilliant-cut diamonds, signed and stamped '750', numbered 50/2, *ring size J*.

**£600 - 800**

261

#### **A THREE STONE SAPPHIRE AND DIAMOND RING**

The central oval mixed-cut sapphire in claw setting between two brilliant-cut diamonds, 18ct gold mounted, with maker's mark 'MJ', *total diamond weight approximately 0.50ct, ring size L (leading edge)*.

**£500 - 700**

262

#### **A CULTURED PEARL NECKLACE**

Comprising three strands of graduated cultured pearls, to an engraved rectangular panel clasp, stamped 'k14', *shortest length 50cm*.

**£500 - 700**

The necklace was presented to the vendor's mother to commemorate the launching of the 'Zealand Venture', a merchant ship in the Wah Kwong fleet on 24th May 1973 in Japan.

263

#### **A YELLOW PRECIOUS METAL PANEL BRACELET**

The articulated square panel links with engraved radial decoration, each containing a medallion, to clasp stamped '750', *length 19.2cm*.

**£700 - 900**

263A

#### **A COLLECTION OF JEWELLERY AND A LADY'S 9CT GOLD BRACELET WATCH, BY GARRARD**

Comprising a gate-link bracelet with pendant letters, spelling the word THIRTEEN, three diamond set rings, a moonstone ring, two further rings, and a 9ct gold lady's wristwatch, by Garrard, with circular signed dial, to tapered lattice decorated bracelet, inscribed to back, with signed box, *bracelet length 18.5cm*. (8)

**£600 - 800**







264

264 †

#### A COLLECTION OF UNMOUNTED DIAMONDS

Comprising 26 round brilliant-cut diamonds of assorted size, contained in case signed 'Labor Gübelin', accompanied by a copy of original Gübelin purchase receipt, dated 5 April 1979, *total diamond weight approximately 3ct.*

£600 - 800

265 Y

#### A COLLECTION OF GENTLEMAN'S ACCESSORIES

To include a cheroot holder, modelled as a carved *corallium rubrum* coral fish, with amber mouthpiece, cased, a retractable pen and pencil, by S. Mordan & Co, of barleytwist form, cased, a further retractable pencil by S. Mordan & Co, a set of six coral *corallium rubrum* waistcoat buttons, cased, two cabochon banded agate collar studs, a diamond set stickpin/stud, cased, and a set of three collar studs, cased, *cheroot holder length 10.5cm.* (7)

£500 - 700

This lot will be subject to USA Fish and Wildlife regulations if it is to be imported into the USA.

266

#### A PAIR OF GARNET AND DIAMOND DROP EARPENDANTS

The pear-shaped drops with central cabochon garnets within a rose-cut diamond surround, suspended beneath a brilliant and rose-cut diamond set ribbon bow surmounts, cased, *length 3.2cm.*

£500 - 700

267 ≈

#### A VICTORIAN DIAMOND INSECT BROOCH

With an old brilliant-cut diamond thorax, rose-cut diamond set abdomen and wings, and cabochon ruby eyes, mounted in gold and silver, with detachable brooch fitting, in fitted case, *wing span 3.5cm.*

£600 - 800

See front cover illustration

268

#### A PAIR OF 19TH CENTURY MICRO-MOSAIC CUFFLINKS

Each circular panel depicting the profile of a cherub, to pale blue ground and openwork border, in fitted case signed 'A. Tanfani, Roma', *diameter 2.05cm.*

£700 - 800

269

#### A PAIR OF SAPPHIRE CUFFLINKS

Comprising square panels of chequerboard design, each set with calibre-cut sapphires, with baton connections between, *panel length 1cm.*

£600 - 800





265 (part)

265 (part)

265 (part)

265 (part)

268

267

266

269



270 (part)

271 (part)

270

**A DIAMOND SET PENDANT NECKLACE AND A PAIR OF PERIDOT AND DIAMOND SET EARRINGS**

The necklace with an openwork heart-shaped panel of oval, brilliant and single-cut diamonds, to a fancy flattened curb-link back chain, 9ct gold mounted, the earrings of swirl design, each with a circular-cut peridot to brilliant-cut diamond set border, *necklace length 41cm. (2)*

£500 - 600

271

**A DIAMOND FIVE STONE RING AND TWO PENDANTS**

The ring inset with graduated old-cut diamonds, to pierced gallery, yellow precious metal mounted, together with a diamond set pendant, the pierced panel with graduated single-cut diamonds, on a fine box-link chain, and a sapphire set heart pendant, *ring size N. (3)*

£700 - 900

272 ≈

**A 9CT GOLD POWDER COMPACT**

Of square hinged form, with engine-turned decoration and ruby set barrel clasp, (rubies untested for natural versus synthetic origin), glazed within, signed 'Drayton, London' and hallmarked, *dimensions 6.3cm x 6.6cm.*

£500 - 600

273

**A GOLD COIN BRACELET**

The curb-link bracelet with clasp stamped '750', suspending six coin fobs, comprising two sovereigns, Victoria, 1880 and Elizabeth II, 1953; Netherlands, 10 guilder, Wilhelmina, 1917; France, 20 francs, 1914; Switzerland, 20 francs, 1935; United States of America, 20 dollars, 1927.

£2,000 - 2,500

274

**A GEORGE V SOVEREIGN AND A GEORGE III THIRD GUINEA**

The sovereign, dated 1929, together with a third guinea, dated 1803. (2)

£200 - 250

275

**A RUSSIAN NICHOLAS II 15 RUBLES GOLD COIN**

Dated 1897, *diameter 24.5mm.*

£300 - 500

276

**A PAIR OF 18CT GOLD CUFFLINKS**

The oval panels with engine-turned borders and belcher-link connections, hallmarked and bearing maker's mark 'G&C', *panel length 1.9cm.*

£250 - 300

277

**A DIAMOND AND ENAMEL REGIMENTAL BROOCH**

For the 4th/7th Royal Dragoon Guards, with polychrome enamel centre and rose-cut diamond surround, together with a polychrome enamel and seed pearl set naval crown brooch, and a set of four large and four small gilt buttons, *first brooch length 3cm. (3)*

£300 - 500

The 4th/7th Royal Dragoon Guards was a cavalry regiment of the British Army from 1922 to 1992. It was formed in India in 1922 by the amalgamation of the 4th Royal Irish Dragoon Guards and 7th Dragoon Guards (Princess Royal's).

278

**A 9CT GOLD CIGARETTE CASE**

Of shaped rectangular form, with engine-turned decoration, monogrammed to centre, hallmarked for Birmingham 1925, *dimensions 6.8cm x 8.1cm.*

£500 - 600

279

**A 9CT GOLD CIGARETTE CASE**

Of hinged rectangular engine-turned form, with elasticated retainer, crested to interior, hallmarked for Birmingham 1927, *length 10.7cm.*

£700 - 900

280

**AN AUSTRO-HUNGARIAN FOUR DUCATS COIN PENDANT ON CHAIN**

The pendant with fancy ropetwist decorated mount, suspended from an 18ct gold ropetwist-link chain, *chain length 73cm.*

£800 - 1,200

281

**A 9CT GOLD MESH-LINK PURSE, A PENCIL AND A THIMBLE**

The mesh-link purse with hinged clasp and London import marks, together with a propelling pencil, of tapered cylindrical form, with engine-turned decoration, signed 'Yard-O-Led' and stamped '9 .375', with original case and papers, and a thimble, with applied wirework decoration, stamped '15ct', *purse width 5.9cm. (3)*

£500 - 600

282 ≈

**A PAIR OF RUBY AND DIAMOND CUFFLINKS**

Each circular panel centred with a cluster of brilliant-cut diamonds, to a border of circular-cut rubies, on hinged baton fittings, *panel diameter 1.55cm.*

£500 - 600

See illustration on page 57

283

**A COLLECTION OF ASSORTED COSTUME JEWELLERY**

To include various necklaces, bracelets, brooches, cufflinks, watches, etc.

This lot is being sold on behalf of the UK charity PACE, an Aylesbury based charity and school providing intensive input for children with motor disorders such as Cerebral Palsy. (Charity number 1011133). The items have been kindly donated, and are being offered for sale at NO RESERVE.





272



273



274



276



275



278



277



280



279



281







# WATCHES





290

284

**AN OPEN FACE POCKET WATCH AND AN ALBERT CHAIN**

The two colour foliate engraved dial with Roman numerals and subsidiary seconds hand, signed 'J. G. Graves, Sheffield', to case stamped '14k' and numbered 271050, together with a 9ct gold graduated curb-link chain, suspending T-bar and shield fob, *watch case diameter 4.6cm. (2)*

£800 - 1,000

285

**AN ENAMEL, DIAMOND AND SEED PEARL FOB WATCH**

The circular white enamel dial with black Arabic numerals, gilt beaded border and scrolled hands, to seed pearl set bezel, the case reverse with red guilloché enamel ground, inset with an old-cut diamond set foliate motif, to seed pearl border, with Swiss squirrel marks to case interior, numbered 52908, *length 3.5cm.*

£600 - 800

286

**THOMAS RUSSELL & SON: AN 18CT GOLD OPEN FACE POCKET WATCH AND TWO WRISTWATCHES**

The first with signed white enamel dial, black Roman numerals and subsidiary seconds dial, to case hallmarked for Chester 1911, the signed top wind movement and case numbered 201027, together with a lady's 9ct gold bracelet watch, and a gentleman's chronograph wristwatch, *first watch case diameter 5.1cm. (3)*

£500 - 700

287

**WALTHAM: A 9CT GOLD HUNTER POCKET WATCH AND AN ALBERT CHAIN**

The watch with signed white enamel dial, black Roman numerals and subsidiary seconds dial, to signed jewelled movement, the plain case hallmarked for 9ct gold, suspended from a 9ct gold graduated curb-link Albert chain, with central T-bar suspension, *watch case diameter 4.8cm. (2)*

£500 - 600

288

**WALTHAM: A 9CT GOLD HUNTER POCKET WATCH AND TWO OPEN FACE POCKET WATCHES**

The first with signed white enamel dial, black Roman numerals and subsidiary seconds dial, to signed movement and 9ct gold case hallmarked for Chester 1915, numbered 8143, together with a gilt metal open face pocket watch, also by Waltham, and a 9ct gold open face pocket watch, the case hallmarked for Birmingham 1923, *first watch case diameter 4.9cm. (3)*

£500 - 800

289

**TWO OPEN FACE POCKET WATCHES AND A DIAMOND COCKTAIL WATCH**

The first pocket watch with white enamel dial, black Roman numerals and subsidiary seconds dial, signed 'Skirmisher, Regd', to case stamped '18k', signed 'Mappin Brothers, 220 Regent St, London' to cuvette, monogrammed to cover, the second pocket watch with gilt dial, black Roman numerals and subsidiary seconds dial, to engine-turned case, together with a lady's single-cut diamond set cocktail watch, (glass loose), *first watch case diameter 4.1cm. (3)*

£500 - 600

290

**WALTHAM: A HUNTER POCKET WATCH**

The circular signed white enamel dial with Roman numerals and subsidiary seconds dial, to case stamped '18c', numbered 25488, movement numbered 6556189, *case diameter 5.1cm.*

£600 - 800



284



282

285



286 (part)



288 (part)



287



288 (part)



288 (part)



289 (part)



291

**FOUR LADY'S WRISTWATCHES**

Comprising a lady's 9ct gold wristwatch, by Omega, the signed oval textured dial with baton markers, to a tapered plaited-link bracelet, a further wristwatch, by Corum, the signed circular textured dial with black Roman numerals, numbered 26437 105482, on later unassociated strap, and two diamond set cocktail watches, *first watch dial length 2cm.* (4)

**£300 - 500**

292 Y

**BAUME & MERCIER: A LADY'S CORAL SET WRISTWATCH**

The circular signed coral-coloured dial with gilt tapered hands, case numbered 791992 36663 9, to a Byzantine-link bracelet spaced with rectangular coral *corallium rubrum* batons, stamped '0,750' and signed 'BMG', *dial diameter 1.7cm.*

**£400 - 500**

This lot will be subject to USA Fish and Wildlife regulations if it is to be imported into the USA.

293

**JUVENIA: A LADY'S BANGLE WATCH**

The cushion-shaped signed dial, within an oversized oval polished bezel, numbered 903194 and stamped '18k', to hinged bangle, with maker's case, *inner diameter 5.3cm.*

**£800 - 1,000**

294

**MUST DE CARTIER: A LADY'S SILVER-GILT WRISTWATCH**

The signed rectangular cream dial with black Roman numerals and inner minute scale, to central monogrammed ground, in signed silver-gilt case with convention marks, numbered 092111PL 2415, to leather strap with signed gilt stainless steel clasp, in maker's pouch, *dial length 1.8cm.*

**£300 - 400**

295

**OMEGA: AN 18CT GOLD LADYMATIC DE VILLE WRISTWATCH**

The oval signed gilt dial with baton markers, to ropetwist bezel and tapered bracelet of fancy ropetwist-links, with signed clasp numbered 751.271, *dial width 1.8cm.*

**£700 - 900**

296

**A LADY'S DIAMOND AND GEM SET BRACELET WATCH**

The rectangular dial with Arabic numerals and bead markers, signed 'Cord', to shaped geometric case of odeonesque design, set with channels of step-cut synthetic rubies and single-cut diamonds, with stamped owl marks to case reverse, on a stylised brick-link bracelet, *dial length 1.35cm.*

**£500 - 700**

297

**JAEGER-LECOULTRE: A LADY'S BRACELET WATCH**

The circular signed silvered dial with baton markers, to case with textured bezel, numbered 1066916, on tapered plaited-link bracelet, stamped '750', *dial diameter 1.75cm.*

**£500 - 700**

298

**JUVENIA: AN 18CT GOLD LADY'S BRACELET WATCH AND A SMALL COLLECTION OF JEWELLERY**

The watch with square signed gilt dial and baton markers, to quartz movement and signed 18ct gold case, numbered 733353, with integral tapered bracelet, together with a gate-link bracelet with padlock clasp, suspending a half sovereign pendant, a curb-link bracelet with padlock clasp, and a heart-shaped locket pendant, on gilt metal chain, *watch dial length 1.25cm.* (5)

**£800 - 900**

299

**A LADY'S BRACELET WATCH AND A BROOCH**

The lady's wristwatch with square gilt dial and baton markers, signed 'Ralco', to tapered textured bracelet, stamped '750', the brooch of foliate design, highlighted with cabochon turquoise and white stones, *watch dial length 1cm.* (2)

**£300 - 400**



291 (part)

292

294

293

295

296

297

298 (part)

299 (part)



300

**AN ART DECO DIAMOND COCKTAIL WATCH**

The rectangular dial with black Arabic numerals, blued steel hands, within single-cut diamond bezel and geometric link shoulders, inner case stamped 'all platinum', on later expanding bracelet strap, with case, *length 15cm*.

**£500 - 600**

301

**TUDOR ROYAL: A LADY'S DIAMOND COCKTAIL WATCH AND A PAIR OF ROSE-CUT AND PEARL EARRINGS**

The circular white dial with Arabic numerals, within a single-cut diamond bezel, to 9ct white gold herringbone-link strap, with unassociated Tudor box and service guarantee from Rolex, dated 24th January 2007, together with a pair of rose-cut diamond and pearl cluster ear pendants, (pearls untested for origin), *watch head diameter 1.6cm*. (2)

**£500 - 700**

See also illustration on page 31

302

**A SAPPHIRE AND DIAMOND COCKTAIL WATCH**

The square silvered dial with Arabic numerals, signed 'Wegelin Geneve', to a tapered rectangular bezel set with alternate channels of step-cut sapphires and single-cut diamonds, (sapphires untested for natural versus synthetic origin), case numbered 2152, with maker's mark 'GB' for Blondel, French import marks and Swiss assay mark, on later 9ct white gold reeded fancy-link bracelet, *total diamond weight approximately 0.45ct, length 15.4cm*.

**£300 - 500**

303

**A LADY'S DIAMOND SET COCKTAIL WATCH**

The rectangular silvered dial with black Arabic numerals and outer minute scale, to rectangular case and shaped hinged shoulders, millegrain set with graduated brilliant and single-cut diamonds, to jewelled movement and case signed 'Movado Factories', case stamped '0,950 Platinum', on later black cordette strap, *dial length 1cm*.

**£500 - 600**

304

**BAUME & MERCIER: A LADY'S DIAMOND SET WRISTWATCH**

The oval signed white dial with black Roman numerals, to single-cut diamond set bezel, case numbered 444507 38236T2, and tapered textured bracelet, stamped '750', in maker's case, *dial width 2cm*.

**£800 - 1,000**

See also illustration on page 55

305

**A LADY'S DIAMOND SET COCKTAIL WATCH**

The shaped silvered dial with black Arabic numerals, to millegrained case and openwork shoulders of single and old-cut diamonds, on an expanding baton-link bracelet, *dial length 1.9cm*.

**£300 - 400**

306

**A LADY'S DIAMOND SET COCKTAIL WATCH**

The rectangular silvered dial with black Arabic numerals and inner minute track, to case and pierced geometric shoulders of baguette and single-cut diamonds, case stamped 'all platinum', on an expanding brick-link bracelet, *dial length 1.2cm*.

**£500 - 700**

307

**A LADY'S DIAMOND SET COCKTAIL WATCH**

The rectangular silvered dial with black Arabic numerals and inner minute scale, to single-cut diamond set millegrained case, and similarly set shoulders of pierced geometric design, on a diamond set expanding-link bracelet, case numbered 8262, *dial length 1.4cm*.

**£500 - 600**

308

**A PLATINUM AND DIAMOND COCKTAIL WATCH**

The movement signed 'Wilka Watches, Switzerland', with small square dial and black Arabic numerals, within an oval bezel pavé set with brilliant-cut diamonds, between pierced panel shoulders similarly set, (lacking strap), *total watch head length 4.25cm*.

**£500 - 700**



301

300

302

144 (part)

303

304

305

306

307

308





309

309

**TECHNOMARINE: A GENTLEMAN'S DIAMOND SET CHRONOGRAPH WRISTWATCH**

The circular signed mother o' pearl dial with brilliant-cut diamond set markers, date display, subsidiary chronograph dials and outer scale, to stainless steel case with white rubbed inlaid bezel and sides, on signed white leather strap, in maker's case, *dial diameter 3.1cm*.

£300 - 500

310

**ROLEX: A 9CT GOLD CASED WRISTWATCH**

The circular dial with Arabic numerals and subsidiary seconds dial, to 9ct gold case with import marks for Glasgow, and jewelled movement, case numbered 1515, dial, case and movement signed, case back inscribed, on later unassociated mesh-link bracelet, stamped '9ct', *dial diameter 2.3cm*.

£500 - 600

311

**OMEGA: A DE VILLE JEUX D'ARGENT SILVER BRACELET WATCH, CIRCA 1975**

The grey and black rectangular dial with canted corners, white baton markers and hands, faceted synthetic sapphire crystal, cal. 635 manual wind movement, integral curb link bracelet with signed clasp, case, dial and movement signed, ref. RS 711.8271, with original Omega pouch, *dial length 2.95cm*.

£300 - 500

312

**BUCCELLATI: A LADY'S WRISTWATCH**

The cushion-shaped engraved gilt dial with black Roman numerals and outer scale 0-60, to case with bead and scallop borders, signed 'Gianmaria Buccellati' and stamped '18kt 750', numbered 4659OJ, on red leather strap, in maker's case, *dial length 2.6cm*.

£500 - 700

313

**THREE GENTLEMAN'S WRISTWATCHES**

Comprising an automatic wristwatch, by Omega, the circular signed gilt dial with baton markers and day/date display, to tapered bracelet, a 9ct gold cased wristwatch, by Garrard, with presentation inscription to reverse, on later unassociated strap, and a stainless steel cased Seamaster wristwatch, by Omega, also on later unassociated strap, *first watch dial diameter 2.8cm*. (3)

£300 - 500



310

311

312

313 (part)

313 (part)

313 (part)

314

**ROLEX: A LADY'S 9CT GOLD PRECISION WRISTWATCH AND A COLLECTION OF POCKET WATCHES**

The first with square signed dial and gilt Arabic numerals, to mechanical movement and brick-link bracelet with signed clasp, together with a Victorian 18ct gold open face pocket watch, the engine-turned case with foliate engraved sides, an enamel and gem set open face pocket watch, two silver cased open face pocket watches, and a further example, by Waltham, stamped '14k', *first watch dial length 1.35cm.* (6)

**£800 - 1,200**

315

**A LARGE COLLECTION OF POCKET WATCHES AND THREE ALBERT CHAINS**

To include various silver, white metal, gilt and gun metal open face pocket and fob watches, two hunter pocket watches, a red enamel open face fob watch, with German silver marks to case, two silver curb-link Albert chains, with T-bar and shield fob suspensions, and a further fancy-link Albert chain. (23)

**£500 - 700**





314 (part)



314 (part)



314 (part)



315 (part)



315 (part)



315 (part)



316

**THREE WRISTWATCHES AND A CASED DRESS SET**

Comprising a lady's 9ct gold wristwatch, by Vertex, the circular signed silvered dial with Arabic numerals, to fancy-link bracelet, a lady's Omega wristwatch, with gilt metal brick-link bracelet, a further lady's wristwatch, and a 9ct gold cufflinks and dress studs set, cased, *first watch dial diameter 1.8cm.* (4)

**£300 - 350**

317

**JOHN FORREST, LONDON: AN 18CT GOLD OPEN FACE POCKET WATCH AND TWO FURTHER POCKET WATCHES**

The first with signed white enamel dial, Roman numerals and subsidiary seconds dial, to engraved 18ct gold case hallmarked for London 1867, movement signed and numbered 17736, together with an open face fob watch, with profusely engraved case, stamped '18k', and a similar white metal example, inscribed, *first watch case diameter 4.9cm.* (3)

**£600 - 800**

318

**A QUARTER REPEATER OPEN FACE POCKET WATCH AND A DIGITAL OPEN FACE POCKET WATCH**

The first with white enamel dial, black Roman numerals and subsidiary seconds dial, to unsigned repeater movement, case stamped '0,935' and numbered 61583, the second with silvered dial, hour aperture, inner scale 0-60 and subsidiary dial, to silver case hallmarked for London 1840, cuvette signed 'Barwise, London', *first watch case diameter 5cm.* (2)

**£500 - 700**

319

**FOUR PAIR CASE POCKET WATCHES**

Comprising a George III silver pair case pocket watch, the white enamel dial with black Roman numerals, to case hallmarked for London 1815, with maker's mark 'SB', the verge movement signed 'Will'm Smith, London' and numbered 61522, a later Victorian example, case hallmarked for Birmingham 1864, movement signed 'Jno. Griffith, Carnarvon', numbered 19936, and two further smaller examples, *first watch case diameter 5.5cm.* (4)

**£700 - 900**

**END OF SALE**

**The next Oxford Jewellery Sale will be held on  
Tuesday 19 May 2015 at 11.00.**





318



317 (part)



319





## NOTICE TO BIDDERS

This notice is addressed by *Bonhams* to any person who may be interested in a *Lot*, including *Bidders* and potential *Bidders* (including any eventual *Buyer* of the *Lot*). For ease of reference we refer to such persons as “*Bidders*” or “you”. Our List of Definitions and Glossary is incorporated into this *Notice to Bidders*. It is at Appendix 3 at the back of the *Catalogue*. Where words and phrases are used in this notice which are in the List of Definitions, they are printed in italics.

IMPORTANT: Additional information applicable to the *Sale* may be set out in the *Catalogue* for the *Sale*, in an insert in the *Catalogue* and/or in a notice displayed at the *Sale* venue and you should read them as well. Announcements affecting the *Sale* may also be given out orally before and during the *Sale* without prior written notice. You should be alert to the possibility of changes and ask in advance of bidding if there have been any.

### 1. OUR ROLE

In its role as *Auctioneer* of *Lots*, *Bonhams* acts solely for and in the interests of the *Seller*. *Bonhams'* job is to sell the *Lot* at the highest price obtainable at the *Sale* to a *Bidder*. *Bonhams* does not act for *Buyers* or *Bidders* in this role and does not give advice to *Buyers* or *Bidders*. When it or its staff make statements about a *Lot* or, if *Bonhams* provides a *Condition Report* on a *Lot* it is doing that on behalf of the *Seller* of the *Lot*. *Bidders* and *Buyers* who are themselves not expert in the *Lots* are strongly advised to seek and obtain independent advice on the *Lots* and their value before bidding for them. The *Seller* has authorised *Bonhams* to sell the *Lot* as its agent on its behalf and, save where we expressly make it clear to the contrary, *Bonhams* acts only as agent for the *Seller*. Any statement or representation we make in respect of a *Lot* is made on the *Seller's* behalf and, unless *Bonhams* sells a *Lot* as principal, not on our behalf and any *Contract for Sale* is between the *Buyer* and the *Seller* and not with us. If *Bonhams* sells a *Lot* as principal this will either be stated in the *Catalogue* or an announcement to that effect will be made by the *Auctioneer*, or it will be stated in a notice at the *Sale* or an insert in the *Catalogue*.

*Bonhams* does not owe or undertake or agree to any duty or responsibility to you in contract or tort (whether direct, collateral, express, implied or otherwise). If you successfully bid for a *Lot* and buy it, at that stage *Bonhams* does enter into an agreement with the *Buyer*. The terms of that contract are set out in our *Buyer's Agreement*, which you will find at Appendix 2 at the back of the *Catalogue*. This will govern *Bonhams'* relationship with the *Buyer*.

### 2. LOTS

Subject to the *Contractual Description* printed in bold letters in the *Entry* about the *Lot* in the *Catalogue* (see paragraph 3 below), *Lots* are sold to the *Buyer* on an “as is” basis, with all faults and imperfections. Illustrations and photographs contained in the *Catalogue* (other than photographs forming part of the *Contractual Description*) or elsewhere of any *Lots* are for identification purposes only. They may not reveal the true condition of the *Lot*. A photograph or illustration may not reflect an accurate reproduction of the colour(s) of the *Lot*. *Lots* are available for inspection prior to the *Sale* and it is for you to satisfy yourself as to each and every aspect of a *Lot*, including its authorship, attribution, condition, provenance, history, background, authenticity, style, period, age, suitability, quality, roadworthiness (if relevant), origin, value and estimated selling price (including the *Hammer Price*). It is your responsibility to examine any *Lot* in which you are interested. It should be remembered that the actual condition of a *Lot* may not be as good as that indicated by its outward appearance. In particular, parts may have been replaced or renewed and *Lots* may not be authentic or of satisfactory quality; the inside of a *Lot* may not be visible and may not be original or may be damaged, as for example where it is covered by upholstery or material. Given the age of many *Lots* they may have been damaged and/or repaired and you should not assume that a *Lot* is in good condition. Electronic or mechanical parts may not operate or may not comply with current statutory requirements. You should not assume that electrical items designed to operate on mains electricity will be suitable for connection to the mains electricity supply and you should obtain a report from

a qualified electrician on their status before doing so. Such items which are unsuitable for connection are sold as items of interest for display purposes only. If you yourself do not have expertise regarding a *Lot*, you should consult someone who does to advise you. We can assist in arranging facilities for you to carry out or have carried out more detailed inspections and tests. Please ask our staff for details.

Any person who damages a *Lot* will be held liable for the loss caused.

### 3. DESCRIPTIONS OF LOTS AND ESTIMATES

#### *Contractual Description of a Lot*

The *Catalogue* contains an *Entry* about each *Lot*. Each *Lot* is sold by its respective *Seller* to the *Buyer* of the *Lot* as corresponding only with that part of the *Entry* which is printed in bold letters and (except for the colour, which may be inaccurately reproduced) with any photograph of the *Lot* in the *Catalogue*. The remainder of the *Entry*, which is not printed in bold letters, represents *Bonhams'* opinion (given on behalf of the *Seller*) about the *Lot* only and is not part of the *Contractual Description* in accordance with which the *Lot* is sold by the *Seller*.

#### *Estimates*

In most cases, an *Estimate* is printed beside the *Entry*. *Estimates* are only an expression of *Bonhams'* opinion made on behalf of the *Seller* of the range where *Bonhams* thinks the *Hammer Price* for the *Lot* is likely to fall; it is not an *Estimate* of value. It does not take into account any VAT or *Buyer's Premium* payable. *Lots* can in fact sell for *Hammer Prices* below and above the *Estimate*. Any *Estimate* should not be relied on as an indication of the actual selling price or value of a *Lot*. *Estimates* are in the currency of the *Sale*.

#### *Condition Reports*

In respect of most *Lots*, you may ask for a *Condition Report* on its physical condition from *Bonhams*. If you do so, this will be provided by *Bonhams* on behalf of the *Seller* free of charge. *Bonhams* is not entering into a contract with you in respect of the *Condition Report* and accordingly does not assume responsibility to you in respect of it. Nor does the *Seller* owe or agree to owe you as a *Bidder* any obligation or duty in respect of this free report about a *Lot*, which is available for your own inspection or for inspection by an expert instructed by you. However, any written *Description* of the physical condition of the *Lot* contained in a *Condition Report* will form part of the *Contractual Description* of the *Lot* under which it is sold to any *Buyer*.

#### *The Seller's responsibility to you*

The *Seller* does not make or agree to make any representation of fact or contractual promise, *Guarantee* or warranty and undertakes no obligation or duty, whether in contract or in tort (other than to the eventual *Buyer* as set out above), in respect of the accuracy or completeness of any statement or representation made by him or on his behalf, which is in any way descriptive of any *Lot* or as to the anticipated or likely selling price of any *Lot*. Other than as set out above, no statement or representation in any way descriptive of a *Lot* or any *Estimate* is incorporated into any *Contract for Sale* between a *Seller* and a *Buyer*.

#### *Bonhams' responsibility to you*

You have the opportunity of examining the *Lot* if you want to and the *Contract for Sale* for a *Lot* is with the *Seller* and not with *Bonhams*; *Bonhams* acts as the *Seller's* agent only (unless *Bonhams* sells the *Lot* as principal).

*Bonhams* undertakes no obligation to you to examine, investigate or carry out any tests, either in sufficient depth or at all, on each *Lot* to establish the accuracy or otherwise of any *Descriptions* or opinions given by *Bonhams*, or by any person on *Bonhams'* behalf, whether in the *Catalogue* or elsewhere.

You should not suppose that such examinations, investigations or tests have occurred.

*Bonhams* does not make or agree to make any representation of fact, and undertakes no obligation or duty (whether in contract or tort) in respect of the accuracy or completeness of any statement or representation made by *Bonhams* or on

*Bonhams'* behalf which is in any way descriptive of any *Lot* or as to the anticipated or likely selling price of any *Lot*. No statement or representation by *Bonhams* or on its behalf in any way descriptive of any *Lot* or any *Estimate* is incorporated into our *Buyer's Agreement*.

#### *Alterations*

*Descriptions* and *Estimates* may be amended at *Bonhams'* discretion from time to time by notice given orally or in writing before or during a *Sale*.

THE *LOT* IS AVAILABLE FOR INSPECTION AND YOU MUST FORM YOUR OWN OPINION IN RELATION TO IT. YOU ARE STRONGLY ADVISED TO EXAMINE ANY *LOT* OR HAVE IT EXAMINED ON YOUR BEHALF BEFORE THE *SALE*.

### 4. CONDUCT OF THE SALE

Our *Sales* are public auctions which persons may attend and you should take the opportunity to do so. We do reserve the right at our sole discretion to refuse admission to our premises or to any *Sale* without stating a reason. We have complete discretion as to whether the *Sale* proceeds, whether any *Lot* is included in the *Sale*, the manner in which the *Sale* is conducted and we may offer *Lots* for *Sale* in any order we choose notwithstanding the numbers given to *Lots* in the *Catalogue*. You should therefore check the date and starting time of the *Sale*, whether there have been any withdrawals or late entries. Remember that withdrawals and late entries may affect the time at which a *Lot* you are interested in is put up for *Sale*. We have complete discretion to refuse any bid, to nominate any bidding increment we consider appropriate, to divide any *Lot*, to combine two or more *Lots*, to withdraw any *Lot* from a *Sale* and, before the *Sale* has been closed, to put up any *Lot* for auction again. Auction speeds can exceed 100 *Lots* to the hour and bidding increments are generally about 10%. However these do vary from *Sale* to *Sale* and from *Auctioneer* to *Auctioneer*. Please check with the department organising the *Sale* for advice on this. Where a *Reserve* has been applied to a *Lot*, the *Auctioneer* may, in his absolute discretion, place bids (up to an amount not equalling or exceeding such *Reserve*) on behalf of the *Seller*. We are not responsible to you in respect of the presence or absence of any *Reserve* in respect of any *Lot*. If there is a *Reserve* it will normally be no higher than the lower figure for any *Estimate* in the *Catalogue*, assuming that the currency of the *Reserve* has not fluctuated adversely against the currency of the *Estimate*. The *Buyer* will be the *Bidder* who makes the highest bid acceptable to the *Auctioneer* for any *Lot* (subject to any applicable *Reserve*) to whom the *Lot* is knocked down by the *Auctioneer* at the fall of the *Auctioneer's* hammer. Any dispute as to the highest acceptable bid will be settled by the *Auctioneer* in his absolute discretion. All bids tendered will relate to the actual *Lot* number announced by the *Auctioneer*. An electronic currency converter may be used at the *Sale*. This equipment is provided as a general guide as to the equivalent amount in certain currencies of a given bid. We do not accept any responsibility for any errors which may occur in the use of the currency converter. We may use video cameras to record the *Sale* and may record telephone calls for reasons of security and to assist in solving any disputes which may arise in relation to bids made at the *Sale*. At some *Sales*, for example, jewellery *Sales*, we may use screens on which images of the *Lots* will be projected. This service is provided to assist viewing at the *Sale*. The image on the screen should be treated as an indication only of the current *Lot*. It should be noted that all bids tendered will relate to the actual *Lot* number announced by the *Auctioneer*. We do not accept any responsibility for any errors which may occur in the use of the screen.

### 5. BIDDING

We do not accept bids from any person who has not completed and delivered to us one of our *Bidding Forms*, either our *Bidder* Registration Form, *Absentee Bidding Form* or Telephone *Bidding Form*. You will be asked for proof of identity, residence and references, which, when asked for, you must supply if your bids are to be accepted by us. Please bring your passport, driving licence (or similar photographic proof of identity) and proof of address. We may request a deposit from you before allowing you to bid. We may refuse entry to a *Sale* to any person even if that person has completed a *Bidding Form*.

Bidding in person

You should come to our *Bidder* registration desk at the *Sale* venue and fill out a *Bidder* Registration Form on (or, if possible, before) the day of the *Sale*. The bidding number system is sometimes referred to as “paddle bidding”. You will be issued with a large card (a “paddle”) with a printed number on it. This will be attributed to you for the purposes of the *Sale*. Should you be a successful *Bidder* you will need to ensure that your number can be clearly seen by the *Auctioneer* and that it is your number which is identified as the *Buyer’s*. You should not let anyone else use your paddle as all *Lots* will be invoiced to the name and address given on your *Bidder* Registration Form. Once an invoice is issued it will not be changed. If there is any doubt as to the *Hammer Price* of, or whether you are the successful *Bidder* of, a particular *Lot*, you must draw this to the attention of the *Auctioneer* before the next *Lot* is offered for *Sale*. At the end of the *Sale*, or when you have finished bidding please return your paddle to the *Bidder* registration desk.

Bidding by telephone

If you wish to bid at the *Sale* by telephone, please complete a Telephone *Bidding Form*, which is available from our offices or in the *Catalogue*. Please then return it to the office responsible for the *Sale* at least 24 hours in advance of the *Sale*. It is your responsibility to check with our Bids Office that your bid has been received. Telephone calls will be recorded. The telephone bidding facility is a discretionary service and may not be available in relation to all *Lots*. We will not be responsible for bidding on your behalf if you are unavailable at the time of the *Sale* or if the telephone connection is interrupted during bidding. Please contact us for further details.

Bidding by post or fax

Absentee *Bidding Forms* can be found in the back of this *Catalogue* and should be completed and sent to the office responsible for the *Sale*. It is in your interests to return your form as soon as possible, as if two or more *Bidders* submit identical bids for a *Lot*, the first bid received takes preference. In any event, all bids should be received at least 24 hours before the start of the *Sale*. Please check your Absentee *Bidding Form* carefully before returning it to us, fully completed and signed by you. It is your responsibility to check with our Bids Office that your bid has been received. This additional service is complimentary and is confidential. Such bids are made at your own risk and we cannot accept liability for our failure to receive and/or place any such bids. All bids made on your behalf will be made at the lowest level possible subject to *Reserves* and other bids made for the *Lot*. Where appropriate your bids will be rounded down to the nearest amount consistent with the *Auctioneer’s* bidding increments. New *Bidders* must also provide proof of identity and address when submitting bids. Failure to do this will result in your bid not being placed.

Bidding via the internet

Please visit our *Website* at <http://www.bonhams.com> for details of how to bid via the internet.

Bidding through an agent

Bids will be accepted as placed on behalf of the person named as the principal on the *Bidding Form* although we may refuse to accept bids from an agent on behalf of a principal and will require written confirmation from the principal confirming the agent’s authority to bid. Nevertheless, as the *Bidding Form* explains, any person placing a bid as agent on behalf of another (whether or not he has disclosed that fact or the identity of his principal) will be jointly and severally liable with the principal to the *Seller* and to *Bonhams* under any contract resulting from the acceptance of a bid. Subject to the above, please let us know if you are acting on behalf of another person when bidding for *Lots* at the *Sale*.

Equally, please let us know if you intend to nominate another person to bid on your behalf at the *Sale* unless this is to be carried out by us pursuant to a Telephone or Absentee *Bidding Form* that you have completed. If we do not approve the agency arrangements in writing before the *Sale*, we are entitled to assume that the person bidding at the *Sale* is bidding on his own behalf. Accordingly, the person bidding at the *Sale* will be the *Buyer* and will be liable to pay the *Hammer Price* and *Buyer’s Premium* and associated charges. If we approve the identity of your client in advance, we will be in a position to

address the invoice to your principal rather than you. We will require proof of the agent’s client’s identity and residence in advance of any bids made by the agent on his behalf. Please refer to our *Conditions of Business* and contact our Customer Services Department for further details.

6. CONTRACTS BETWEEN THE BUYER AND SELLER AND THE BUYER AND BONHAMS

On the *Lot* being knocked down to the *Buyer*, a *Contract for Sale* of the *Lot* will be entered into between the *Seller* and the *Buyer* on the terms of the *Contract for Sale* set out in Appendix 1 at the back of the *Catalogue*. You will be liable to pay the *Purchase Price*, which is the *Hammer Price* plus any applicable VAT. At the same time, a separate contract is also entered into between us as *Auctioneers* and the *Buyer*. This is our *Buyer’s Agreement*, the terms of which are set out in Appendix 2 at the back of the *Catalogue*. Please read the terms of the *Contract for Sale* and our *Buyer’s Agreement* contained in the *Catalogue* in case you are the successful *Bidder*. We may change the terms of either or both of these agreements in advance of their being entered into, by setting out different terms in the *Catalogue* and/or by placing an insert in the *Catalogue* and/or by notices at the *Sale* venue and/or by oral announcements before and during the *Sale*. You should be alert to this possibility of changes and ask if there have been any.

7. BUYER’S PREMIUM AND OTHER CHARGES PAYABLE BY THE BUYER

Under the *Buyer’s Agreement*, a premium (the *Buyer’s Premium*) is payable to us by the *Buyer* in accordance with the terms of the *Buyer’s Agreement* and at rates set out below, calculated by reference to the *Hammer Price* and payable in addition to it. Storage charges and *Expenses* are also payable by the *Buyer* as set out in the *Buyer’s Agreement*. All the sums payable to us by the *Buyer* are subject to VAT. For this *Sale* the following rates of *Buyer’s Premium* will be payable by *Buyers* of *Lots*:

25% up to £50,000 of the <i>Hammer Price</i>
20% from £50,001 to £1,000,000 of the <i>Hammer Price</i>
12% from £1,000,001 of the <i>Hammer Price</i>

On certain *Lots*, which will be marked “AR” in the *Catalogue* and which are sold for a *Hammer Price* of €1,000 or greater (converted into the currency of the *Sale* using the European Central Bank Reference rate prevailing on the date of the *Sale*), the *Additional Premium* will be payable to us by the *Buyer* to cover our *Expenses* relating to the payment of royalties under the Artists Resale Right Regulations 2006. The *Additional Premium* will be a percentage of the amount of the *Hammer Price* calculated in accordance with the table below, and shall not exceed €12,500 (converted into the currency of the *Sale* using the European Central Bank Reference rate prevailing on the date of the *Sale*).

<i>Hammer Price</i>	Percentage amount
From €0 to €50,000	4%
From €50,000.01 to €200,000	3%
From €200,000.01 to €350,000	1%
From €350,000.01 to €500,000	0.5%
Exceeding €500,000	0.25%

8. VAT

The prevailing rate of VAT at the time of going to press is 20%, but this is subject to government change and the rate payable will be the rate in force on the date of the *Sale*.

- The following symbols are used to denote that VAT is due on the *Hammer Price* and *Buyer’s Premium*:
- † VAT at the prevailing rate on *Hammer Price* and *Buyer’s Premium*
  - Ω VAT on imported items at the prevailing rate on *Hammer Price* and *Buyer’s Premium*
  - \* VAT on imported items at a preferential rate of 5% on *Hammer Price* and the prevailing rate on *Buyer’s Premium*

- G Gold bullion exempt from VAT on the *Hammer Price* and subject to VAT at the prevailing rate on the *Buyer’s Premium*
- Zero rated for VAT, no VAT will be added to the *Hammer Price* or the *Buyer’s Premium*
- α *Buyers* from within the EU: VAT is payable at the prevailing rate on just the *Buyer’s Premium* (NOT the *Hammer Price*). *Buyers* from outside the EU: VAT is payable at the prevailing rate on both *Hammer Price* and *Buyer’s Premium*. If a *Buyer*, having registered under a non-EU address, decides that the item is not to be exported from the EU, then he should advise *Bonhams* immediately.

In all other instances no VAT will be charged on the *Hammer Price*, but VAT at the prevailing rate will be added to *Buyer’s Premium* which will be invoiced on a VAT inclusive basis.

9. PAYMENT

It is of critical importance that you ensure that you have readily available funds to pay the *Purchase Price* and the *Buyer’s Premium* (plus VAT and any other charges and *Expenses* to us) in full before making a bid for the *Lot*. If you are a successful *Bidder*, payment will be due to us by 4.30 pm on the second working day after the *Sale* so that all sums are cleared by the eighth working day after the *Sale*. Unless agreed by us in advance payments made by anyone other than the registered *Buyer* will not be accepted. Payment will have to be by one of the following methods (all cheques should be made payable to Bonhams 1793 Limited). *Bonhams* reserves the right to vary the terms of payment at any time.

**Sterling personal cheque drawn on a UK branch of a bank or building society:** all cheques must be cleared before you can collect your purchases;

**Bankers draft/building society cheque:** if you can provide suitable proof of identity and we are satisfied as to the genuineness of the draft or cheque, and that the funds have originated from your own account, we will allow you to collect your purchases immediately;

**Cash:** you may pay for *Lots* purchased by you at this *Sale* with notes, coins or travellers cheques in the currency in which the *Sale* is conducted (but not any other currency) provided that the total amount payable by you in respect of all *Lots* purchased by you at the *Sale* does not exceed £3,000, or the equivalent in the currency in which the *Sale* is conducted, at the time when payment is made. If the amount payable by you for *Lots* exceeds that sum, the balance must be paid otherwise than in coins, notes or travellers cheques;

**Bank transfer:** you may electronically transfer funds to our *Trust Account*. If you do so, please quote your paddle number and invoice number as the reference. Our *Trust Account* details are as follows:

Bank: National Westminster Bank Plc  
Address: PO Box 4RY  
250 Regent Street  
London W1A 4RY  
Account Name: Bonhams 1793 Limited Trust Account  
Account Number: 25563009  
Sort Code: 56-00-27  
IBAN Number: GB 33 NWBK 560027 25563009

If paying by bank transfer, the amount received after the deduction of any bank fees and/or conversion of the currency of payment to pounds sterling must not be less than the sterling amount payable, as set out on the invoice.

**Debit cards:** there is no additional charge for purchases made with personal debit cards, issued by a UK bank. Debit cards issued by an overseas bank, deferred and company debit cards and all credit cards will be subject to a 2% surcharge;

**Credit cards:** Visa and Mastercard only. Please note there is a 2% surcharge on the total invoice value when payments are made using credit cards. It may be advisable to notify your card provider of your intended purchase in advance to reduce delays caused by us having to seek authority when you come to pay. If you have any questions with regard to payment, please contact our Customer Services Department.

## 10. COLLECTION AND STORAGE

The *Buyer* of a *Lot* will not be allowed to collect it until payment in full and in cleared funds has been made (unless we have made a special arrangement with the *Buyer*). For collection and removal of purchased *Lots*, please refer to *Sale Information* at the front of the *Catalogue*. Our offices are open 9.00am – 5pm Monday to Friday. Details relating to the collection of a *Lot*, the storage of a *Lot* and our *Storage Contractor* after the *Sale* are set out in the *Catalogue*.

## 11. SHIPPING

Please refer all enquiries to our shipping department on:  
Tel: +44 (0)20 8963 2850/2852 Fax: +44 (0)20 8963 2805  
Email: [shipping@bonhams.com](mailto:shipping@bonhams.com)

## 12. EXPORT/TRADE RESTRICTIONS

It is your sole responsibility to comply with all export and import regulations relating to your purchases and also to obtain any relevant export and/or import licence(s). Export licences are issued by Arts Council England and application forms can be obtained from its Export Licensing Unit. The detailed provisions of the export licencing arrangements can be found on the ACE website <http://www.artscouncil.org.uk/what-we-do/supporting-museums/cultural-property/export-controls/export-licensing/> or by phoning ACE on +44 (0)20 7973 5188. The need for import licences varies from country to country and you should acquaint yourself with all relevant local requirements and provisions. The refusal of any import or export licence(s) or any delay in obtaining such licence(s) shall not permit the rescission of any *Sale* nor allow any delay in making full payment for the *Lot*. Generally, please contact our shipping department before the *Sale* if you require assistance in relation to export regulations.

## 13. CITES REGULATIONS

Please be aware that all *Lots* marked with the symbol Y are subject to CITES regulations when exporting these items outside the EU. These regulations may be found at <http://www.defra.gov.uk/ahvla-en/imports-exports/cites/> or may be requested from:

Animal Health and Veterinary Laboratories Agency (AHVLA)  
Wildlife Licensing  
Floor 1, Zone 17, Temple Quay House  
2 The Square, Temple Quay  
BRISTOL BS1 6EB  
Tel: +44 (0) 117 372 8774

## 14. THE SELLERS AND/OR BONHAMS' LIABILITY

Other than any liability of the *Seller* to the *Buyer* of a *Lot* under the *Contract for Sale*, neither we nor the *Seller* are liable (whether in negligence or otherwise) for any error or misdescription or omission in any *Description* of a *Lot* or any *Estimate* in respect of it, whether contained in the *Catalogue* or otherwise, whether given orally or in writing and whether given before or during the *Sale*. Neither we nor the *Seller* will be liable for any loss of *Business*, profits, revenue or income, or for loss of reputation, or for disruption to *Business* or wasted time on the part of management or staff, or for indirect losses or consequential damages of any kind, irrespective in any case of the nature, volume or source of the loss or damage alleged to be suffered, and irrespective of whether the said loss or damage is caused by or claimed in respect of any negligence, other tort, breach of contract (if any) or statutory duty, restitutionary claim or otherwise. In any circumstances where we and/or the *Seller* are liable in relation to any *Lot* or any *Description* or *Estimate* made of any *Lot*, or the conduct of any *Sale* in relation to any *Lot*, whether in damages, for an indemnity or contribution, or for a restitutionary remedy or otherwise, our and/or the *Seller's* liability (combined, if both we and the *Seller* are liable) will be limited to payment of a

sum which will not exceed by way of maximum the amount of the *Purchase Price* of the *Lot* irrespective in any case of the nature, volume or source of any loss or damage alleged to be suffered or sum claimed as due, and irrespective of whether the liability arises from any negligence, other tort, breach of contract (if any) or statutory duty or otherwise. Nothing set out above will be construed as excluding or restricting (whether directly or indirectly) our liability or excluding or restricting any person's rights or remedies in respect of (i) fraud, or (ii) death or personal injury caused by our negligence (or by the negligence of any person under our control or for whom we are legally responsible), or (iii) acts or omissions for which we are liable under the Occupiers Liability Act 1957, or (iv) any other liability to the extent the same may not be excluded or restricted as a matter of law or (v) our undertakings under paragraphs 9 (in relation to specialist *Stamp* or *Book Sales* only) and 10 of the *Buyer's Agreement*. The same applies in respect of the *Seller*, as if references to us in this paragraph were substituted with references to the *Seller*.

## 15. BOOKS

As stated above, all *Lots* are sold on an "as is" basis, subject to all faults, imperfections and errors of *Description* save as set out below. However, you will be entitled to reject a *Book* in the circumstances set out in paragraph 11 of the *Buyers Agreement*. Please note that *Lots* comprising printed *Books*, unframed maps and bound manuscripts are not liable to VAT on the *Buyer's Premium*.

## 16. CLOCKS AND WATCHES

All *Lots* are sold "as is", and the absence of any reference to the condition of a clock or watch does not imply that the *Lot* is in good condition and without defects, repairs or restorations. Most clocks and watches have been repaired in the course of their normal lifetime and may now incorporate parts not original to them. Furthermore, *Bonhams* makes no representation or warranty that any clock or watch is in working order. As clocks and watches often contain fine and complex mechanisms, *Bidders* should be aware that a general service, change of battery or further repair work, for which the *Buyer* is solely responsible, may be necessary. *Bidders* should be aware that the importation of watches such as Rolex, Frank Muller and Corum into the United States is highly restricted. These watches may not be shipped to the USA and can only be imported personally.

## 17. FIREARMS – PROOF, CONDITION AND CERTIFICATION

### Proof of Firearms

The term "proof exemption" indicates that a firearm has been examined at a Proof House, but not proved, as either (a) it was deemed of interest and not intended for use, or (b) ammunition was not available. In either case, the firearm must be regarded as unsafe to fire unless subsequently proved. Firearms proved for Black Powder should not be used with smokeless ammunition.

The term "Certificate of Unprovability" indicates that a firearm has been examined at a Proof House and is deemed both unsuitable for proof and use. Reproof is required before any such firearm is to be used.

### Guns Sold as Parts

Barrels of guns sold as parts will only be made available for sleeving and measurements once rendered unserviceable according to the Gun Barrel Proof Act of 1968 to 1978 and the Rules of Proof.

## Condition of Firearms

Comment in this *Catalogue* is restricted, in general, to exceptional condition and to those defects that might affect the immediate safety of a firearm in normal use. An intending *Bidder* unable to make technical examinations and assessments is recommended to seek advice from a gunmaker or from a modern firearms specialist. All prospective *Bidders* are advised to consult the "of bore and wall-thickness measurements posted in the saleroom and available from the department. *Bidders* should note that guns are stripped only where there is a strong indication of a mechanical malfunction. Stripping is not, otherwise, undertaken. Guns intended for use should be stripped and cleaned beforehand. Hammer guns should have their rebound mechanisms checked before use. The safety mechanisms of all guns must be tested before use. All measurements are approximate.

## Original Gun Specifications Derived from Gunmakers

The Sporting Gun Department endeavours to confirm a gun's original specification and date of manufacture with makers who hold their original records.

## Licensing Requirements Firearms Act 1968 as amended

*Bonhams* is constantly reviewing its procedures and would remind you that, in the case of firearms or shotguns subject to certification, to conform with current legislation, *Bonhams* is required to see, as appropriate, your original registered firearms dealer's certificate / shot gun certificate / firearm certificate / museum firearms licence / Section 5 authority or import licence (or details of any exemption from which you may benefit, for instance Crown servant status) for the firearm(s) you have purchased prior to taking full payment of the amount shown on your invoice. Should you not already be in possession of such an authority or exemption, you are required to initially pay a deposit of 95% of the total invoice with the balance of 5% payable on presentation of your valid certificate or licence showing your authority to hold the firearm(s) concerned.

Please be advised that if a successful *Bidder* is then unable to produce the correct paperwork, the *Lot(s)* will be reoffered by *Bonhams* in the next appropriate *Sale*, on standard terms for *Sellers*, and you will be responsible for any loss incurred by *Bonhams* on the original *Sale* to you.

In the case of RFD certificates and Section 5 authorities, we wish to keep an up-to-date copy on file. Please supply us with a Fax or photocopy. It would be helpful if you could send us an updated copy whenever your certificate or authority is renewed or changed.

*Lots* marked 'S1' and bearing red labels are Section 1 firearms and require a valid British Firearms certificate, RFD Licence or import licence.

*Lots* marked 'S2' and bearing blue labels are Section 2 firearms and require a valid British Shotgun certificate, RFD licence or import licence.

*Lots* marked 'S5' and bearing specially marked red labels are Section 5 prohibited firearms and require a valid Section 5 Authority or import licence.

*Lots* marked with a 'S58' and bearing yellow labels are for obsolete calibres and no licence is required unless ammunition is held.

Unmarked *Lots* require no licence.

Please do not hesitate to contact the Modern Sporting Gun Department should you have any queries.

## Taxidermy and Related Items

As a *Seller* of these articles, *Bonhams* undertakes to comply fully with Cites and DEFRA regulations. *Buyers* are advised to inform themselves of all such regulations and should expect the exportation of items to take some time to arrange.

## 18. FURNITURE

### Upholstered Furniture

Whilst we take every care in cataloguing furniture which has been upholstered we offer no *Guarantee* as to the originality of the wood covered by fabric or upholstery.



## 19. JEWELLERY

### ~ Ruby and Jadeite

Ruby and jadeite gemstones of Burmese (Myanmar) origin may not be imported into the US. Rubies and jadeite of non-Burmese origin require certification before import into the US and it is the *Buyer's* responsibility to obtain all relevant and required export/import licences, certificates and documentation before shipping. Failure by the *Buyer* to successfully import goods into the US does not constitute grounds for non payment or cancellation of *Sale*. *Bonhams* will not be responsible for any additional costs in this regard howsoever incurred.

### Gemstones

Historically many gemstones have been subjected to a variety of treatments to enhance their appearance. Sapphires and rubies are routinely heat treated to improve their colour and clarity, similarly emeralds are frequently treated with oils or resin for the same purpose. Other treatments such as staining, irradiation or coating may have been used on other gemstones. These treatments may be permanent, whilst others may need special care or re-treatment over the years to retain their appearance. *Bidders* should be aware that *Estimates* assume that gemstones may have been subjected to such treatments. A number of laboratories issue certificates that give more detailed *Descriptions* of gemstones. However there may not be consensus between different laboratories on the degrees, or types of treatment for any particular gemstone. In the event that *Bonhams* has been given or has obtained certificates for any *Lot* in the *Sale* these certificates will be disclosed in the *Catalogue*. Although, as a matter of policy, *Bonhams* endeavours to provide certificates from recognised laboratories for certain gemstones, it is not feasible to obtain certificates for each *Lot*. In the event that no certificate is published in the *Catalogue*, *Bidders* should assume that the gemstones may have been treated. Neither *Bonhams* nor the *Seller* accepts any liability for contradictions or differing certificates obtained by *Buyers* on any *Lots* subsequent to the *Sale*.

### Estimated Weights

If a stone(s) weight appears within the body of the *Description* in capital letters, the stone(s) has been unmounted and weighed by *Bonhams*. If the weight of the stone(s) is stated to be approximate and does not appear in capital letters, the stone(s) has been assessed by us within its/their settings, and the stated weight is a statement of our opinion only. This information is given as a guide and *Bidders* should satisfy themselves with regard to this information as to its accuracy.

### Signatures

#### 1. A diamond brooch, by Kutchinsky

When the maker's name appears in the title, in *Bonhams'* opinion the piece is by that maker.

#### 2. A diamond brooch, signed Kutchinsky

Has a signature that, in *Bonhams'* opinion, is authentic but may contain gemstones that are not original, or the piece may have been altered.

#### 3. A diamond brooch, mounted by Kutchinsky

Has been created by the jeweller, in *Bonhams'* opinion, but using stones or designs supplied by the client.

## 20. PHOTOGRAPHS

### Explanation of Catalogue Terms

- "Bill Brandt": in our opinion a work by the artist.
- "Attributed to Bill Brandt": in our opinion probably a work by the artist, but less certainty to authorship is expressed than in the preceding category.
- "Signed and/or titled and/or dated and/or inscribed": in our opinion the signature and/or title and/or date and/or inscription are in the artist's hand.
- "Signed and/or titled and/or dated and/or inscribed in another hand": in our opinion the signature and/or title and/or date and/or inscription have been added by another hand.

- The date given is that of the image (negative). Where no further date is given, this indicates that the photographic print is vintage (the term "vintage" may also be included in the *Lot Description*). A vintage photograph is one which was made within approximately 5-10 years of the negative. Where a second, later date appears, this refers to the date of printing. Where the exact printing date is not known, but understood to be later, "printed later" will appear in the *Lot Description*.
- Unless otherwise specified, dimensions given are those of the piece of paper on which the image is printed, including any margins. Some photographs may appear in the *Catalogue* without margins illustrated.
- All photographs are sold unframed unless stated in the *Lot Description*.

## 21. PICTURES

### Explanation of Catalogue Terms

The following terms used in the *Catalogue* have the following meanings but are subject to the general provisions relating to *Descriptions* contained in the *Contract for Sale*:

- "Jacopo Bassano": in our opinion a work by the artist. When the artist's forename(s) is not known, a series of asterisks, followed by the surname of the artist, whether preceded by an initial or not, indicates that in our opinion the work is by the artist named;
- "Attributed to Jacopo Bassano": in our opinion probably a work by the artist but less certainty as to authorship is expressed than in the preceding category;
- "Studio/Workshop of Jacopo Bassano": in our opinion a work by an unknown hand in a studio of the artist which may or may not have been executed under the artist's direction;
- "Circle of Jacopo Bassano": in our opinion a work by a hand closely associated with a named artist but not necessarily his pupil;
- "Follower of Jacopo Bassano": in our opinion a work by a painter working in the artist's style, contemporary or nearly contemporary, but not necessarily his pupil;
- "Manner of Jacopo Bassano": in our opinion a work in the style of the artist and of a later date;
- "After Jacopo Bassano": in our opinion, a copy of a known work of the artist;
- "Signed and/or dated and/or inscribed": in our opinion the signature and/or date and/or inscription are from the hand of the artist;
- "Bears a signature and/or date and/or inscription": in our opinion the signature and/or date and/or inscription have been added by another hand.

## 22. PORCELAIN AND GLASS

### Damage and Restoration

For your guidance, in our *Catalogues* we detail, as far as practicable, recorded all significant defects, cracks and restoration. Such practicable *Descriptions* of damage cannot be definitive, and in providing *Condition Reports*, we cannot *Guarantee* that there are no other defects present which have not been mentioned. *Bidders* should satisfy themselves by inspection, as to the condition of each *Lot*. Please see the *Contract for Sale* printed in this *Catalogue*. Because of the difficulty in determining whether an item of glass has been repolished, in our *Catalogues* reference is only made to visible chips and cracks. No mention is made of repolishing, severe or otherwise.

## 23. VEHICLES

### The Veteran Car Club of Great Britain

#### Dating Plates and Certificates

When mention is made of a Veteran Car Club Dating Plate or Dating Certificate in this *Catalogue*, it should be borne in mind that the Veteran Car Club of Great Britain using the services of Veteran Car Company Ltd, does from time to time, review cars already dated and, in some instances, where fresh evidence becomes available, the review can result in an alteration of date. Whilst the Club and Veteran Car Company Ltd make every effort to ensure accuracy, the date shown on the Dating Plate or Dating Certificate cannot be guaranteed as correct and intending purchasers should make their own enquiries as to the date of the car.

## 24. WINE

*Lots* which are lying under Bond and those liable to VAT may not be available for immediate collection.

### Examining the wines

It is occasionally possible to provide a pre-*Sale* tasting for larger parcels (as defined below). This is generally limited to more recent and everyday drinking wines. Please contact the department for details.

It is not our policy to inspect every unopened case. In the case of wines older than 20 years the boxes will usually have been opened and levels and appearance noted in the *Catalogue* where necessary. You should make proper allowance for variations in ullage levels and conditions of corks, capsules and labels.

### Corks and Ullages

Ullage refers to the space between the base of the cork and the wine. Ullage levels for Bordeaux shaped bottles are only normally noted when below the neck and for Burgundy, Alsace, German and Cognac shaped bottles when greater than 4 centimetres (cm). Acceptable ullage levels increase with age; generally acceptable levels are as follows:

Under 15 years old – into neck or less than 4cm  
15 to 30 years old – top shoulder (ts) or up to 5cm  
Over 30 years old – high shoulder (hs) or up to 6cm

It should be noted that ullages may change between publication of the *Catalogue* and the *Sale* and that corks may fail as a result of transporting the wine. We will only accept responsibility for *Descriptions* of condition at the time of publication of the *Catalogue* and cannot accept responsibility for any loss resulting from failure of corks either before or after this point.

### Options to buy parcels

A parcel is a number of *Lots* of identical size of the same wine, bottle size and *Description*. The *Buyer* of any of these *Lots* has the option to accept some or all of the remaining *Lots* in the parcel at the same price, although such options will be at the *Auctioneer's* sole discretion. Absentee *Bidders* are, therefore, advised to bid on the first *Lot* in a parcel.

### Wines in Bond

Wines lying in Bond are marked Δ and VAT is payable by the purchaser, at the standard rate, on the *Hammer Price*, unless the wines are to remain under Bond. *Buyers* requiring their wine to remain in Bond must notify *Bonhams* at the time of the *Sale*. The *Buyer* is then himself responsible for all duty, clearance VAT and other charges that may be payable thereon. All such *Lots* must be transferred or collected within two weeks of the *Sale*.

*Buyers* outside the UK must be aware that any forwarding agent appointed to export their purchases must have a movement certificate for *Lots* to be released under Bond.

### Bottling Details and Case Terms

The following terms used in the *Catalogue* have the following meanings:

CB – Château bottled  
DB – Domaine bottled  
EstB – Estate bottled  
BB – Bordeaux bottled  
BE – Belgian bottled  
FB – French bottled  
GB – German bottled  
OB – Oporto bottled  
UK – United Kingdom bottled  
owc – original wooden case  
iwc – individual wooden case  
oc – original carton

## SYMBOLS

### THE FOLLOWING SYMBOLS ARE USED TO DENOTE

- Y Subject to CITES regulations when exporting these items outside the EU, see clause 13.
- W Objects displayed with a w will be located in the Bonhams Warehouse and will only be available for collection from this location.
- ≈ Please note that as a result of recent legislation ruby and jadeite gem stones of Burmese (Myanmar) origin may not be imported into the US. Rubies and jadeite of non-Burmese origin require certification before import into the US.
- Δ Wines lying in Bond.
- AR An *Additional Premium* will be payable to us by the *Buyer* to cover our *Expenses* relating to payment of royalties under the Artists Resale Right Regulations 2006. See clause 7 for details.
- The *Seller* has been guaranteed a minimum price for the *Lot*, either by *Bonhams* or a third party. This may take the form of an irrevocable bid by a third party, who may make a financial gain on a successful *Sale* or a financial loss if unsuccessful.
- ▲ *Bonhams* owns the *Lot* either wholly or partially or may otherwise have an economic interest.
- Ⓞ This lot contains or is made of ivory. The United States Government has banned the import of ivory into the USA.

•, †, \*, G, Ω, α see clause 8, VAT, for details.

### DATA PROTECTION – USE OF YOUR INFORMATION

Where we obtain any personal information about you, we shall only use it in accordance with the terms of our Privacy Policy (subject to any additional specific consent(s) you may have given at the time your information was disclosed). A copy of our Privacy Policy can be found on our *Website* [www.bonhams.com](http://www.bonhams.com) or requested by post from Customer Services Department, 101 New Bond Street, London, W1S 1SR or by email from [info@bonhams.com](mailto:info@bonhams.com)

## APPENDIX 1

### CONTRACT FOR SALE

**IMPORTANT:** These terms may be changed in advance of the *Sale* of the *Lot* to you, by the setting out of different terms in the *Catalogue* for the *Sale* and/or by placing an insert in the *Catalogue* and/or by notices at the *Sale* venue and/or by oral announcements before and during the *Sale* at the *Sale* venue. You should be alert to this possibility of changes and ask in advance of bidding if there have been any.

Under this contract the *Seller's* liability in respect of the quality of the *Lot*, its fitness for any purpose and its conformity with any *Description* is limited. You are strongly advised to examine the *Lot* for yourself and/or obtain an independent examination of it before you buy it.

### 1 THE CONTRACT

- 1.1 These terms govern the *Contract for Sale* of the *Lot* by the *Seller* to the *Buyer*.
- 1.2 The Definitions and Glossary contained in Appendix 3 in the *Catalogue* are incorporated into this *Contract for Sale* and a separate copy can also be provided by *Bonhams* on request. Where words and phrases are used which are in the List of Definitions, they are printed in italics.
- 1.3 The *Seller* sells the *Lot* as the principal to the *Contract for Sale*, such contract being made between the *Seller* and you through *Bonhams* which acts in the sole capacity as the *Seller's* agent and not as an additional principal. However, if the *Catalogue* states that *Bonhams* sells the *Lot* as principal, or such a statement is made by an announcement by the *Auctioneer*, or by a notice at the *Sale*, or an insert in the *Catalogue*, then *Bonhams* is the *Seller* for the purposes of this agreement.
- 1.4 The contract is made on the fall of the *Auctioneer's* hammer in respect of the *Lot* when it is knocked down to you.

## 2 SELLER'S UNDERTAKINGS

- 2.1 The *Seller* undertakes to you that:
- 2.1.1 the *Seller* is the owner of the *Lot* or is duly authorised to sell the *Lot* by the owner;
- 2.1.2 save as disclosed in the *Entry* for the *Lot* in the *Catalogue*, the *Seller* sells the *Lot* with full title guarantee or, where the *Seller* is an executor, trustee, liquidator, receiver or administrator, with whatever right, title or interest he may have in the *Lot*;
- 2.1.3 except where the *Sale* is by an executor, trustee, liquidator, receiver or administrator the *Seller* is both legally entitled to sell the *Lot*, and legally capable of conferring on you quiet possession of the *Lot* and that the *Sale* conforms in every respect with the terms implied by the Sale of Goods Act 1979, Sections 12(1) and 12(2) (see the Definitions and Glossary);
- 2.1.4 the *Seller* has complied with all requirements, legal or otherwise, relating to any export or import of the *Lot*, and all duties and taxes in respect of the export or import of the *Lot* have (unless stated to the contrary in the *Catalogue* or announced by the *Auctioneer*) been paid and, so far as the *Seller* is aware, all third parties have complied with such requirements in the past;
- 2.1.5 subject to any alterations expressly identified as such made by announcement or notice at the *Sale* venue or by the *Notice to Bidders* or by an insert in the *Catalogue*, the *Lot* corresponds with the *Contractual Description* of the *Lot*, being that part of the *Entry* about the *Lot* in the *Catalogue* which is in bold letters and (except for colour) with any photograph of the *Lot* in the *Catalogue* and the contents of any *Condition Report* which has been provided to the *Buyer*.

## 3 DESCRIPTIONS OF THE LOT

- 3.1 Paragraph 2.1.5 sets out what is the *Contractual Description* of the *Lot*. In particular, the *Lot* is not sold as corresponding with that part of the *Entry* in the *Catalogue* which is not printed in bold letters, which merely sets out (on the *Seller's* behalf) *Bonhams'* opinion about the *Lot* and which is not part of the *Contractual Description* upon which the *Lot* is sold. Any statement or representation other than that part of the *Entry* referred to in paragraph 2.1.5 (together with any express alteration to it as referred to in paragraph 2.1.5), including any *Description* or *Estimate*, whether made orally or in writing, including in the *Catalogue* or on *Bonhams' Website*, or by conduct, or otherwise, and whether by or on behalf of the *Seller* or *Bonhams* and whether made prior to or during the *Sale*, is not part of the *Contractual Description* upon which the *Lot* is sold.
- 3.2 Except as provided in paragraph 2.1.5, the *Seller* does not make or give and does not agree to make or give any contractual promise, undertaking, obligation, guarantee, warranty, or representation of fact, or undertake any duty of care, in relation to any *Description* of the *Lot* or any *Estimate* in relation to it, nor of the accuracy or completeness of any *Description* or *Estimate* which may have been made by or on behalf of the *Seller* including by *Bonhams*. No such *Description* or *Estimate* is incorporated into this *Contract for Sale*.

## 4 FITNESS FOR PURPOSE AND SATISFACTORY QUALITY

- 4.1 The *Seller* does not make and does not agree to make any contractual promise, undertaking, obligation, guarantee, warranty, or representation of fact in relation to the satisfactory quality of the *Lot* or its fitness for any purpose.

- 4.2 The *Seller* will not be liable for any breach of any undertaking, whether implied by the Sale of Goods Act 1979 or otherwise, as to the satisfactory quality of the *Lot* or its fitness for any purpose.

## 5 RISK, PROPERTY AND TITLE

- 5.1 Risk in the *Lot* passes to you when it is knocked down to you on the fall of the *Auctioneer's* hammer in respect of the *Lot*. The *Seller* will not be responsible thereafter for the *Lot* prior to you collecting it from *Bonhams* or the *Storage Contractor*, with whom you have separate contract(s) as *Buyer*. You will indemnify the *Seller* and keep the *Seller* fully indemnified from and against all claims, proceedings, costs, expenses and losses arising in respect of any injury, loss and damage caused to the *Lot* after the fall of the *Auctioneer's* hammer until you obtain full title to it.
- 5.2 Title to the *Lot* remains in and is retained by the *Seller* until the *Purchase Price* and all other sums payable by you to *Bonhams* in relation to the *Lot* have been paid in full to, and received in cleared funds by, *Bonhams*.

## 6 PAYMENT

- 6.1 Your obligation to pay the *Purchase Price* arises when the *Lot* is knocked down to you on the fall of the *Auctioneer's* hammer in respect of the *Lot*.
- 6.2 Time will be of the essence in relation to payment of the *Purchase Price* and all other sums payable by you to *Bonhams*. Unless agreed in writing with you by *Bonhams* on the *Seller's* behalf (in which case you must comply with the terms of that agreement), all such sums must be paid to *Bonhams* by you in the currency in which the *Sale* was conducted by not later than 4.30pm on the second working day following the *Sale* and you must ensure that the funds are cleared by the seventh working day after the *Sale*. Payment must be made to *Bonhams* by one of the methods stated in the *Notice to Bidders* unless otherwise agreed with you in writing by *Bonhams*. If you do not pay any sums due in accordance with this paragraph, the *Seller* will have the rights set out in paragraph 8 below.

## 7 COLLECTION OF THE LOT

- 7.1 Unless otherwise agreed in writing with you by *Bonhams*, the *Lot* will be released to you or to your order only when *Bonhams* has received cleared funds to the amount of the full *Purchase Price* and all other sums owed by you to the *Seller* and to *Bonhams*.
- 7.2 The *Seller* is entitled to withhold possession from you of any other *Lot* he has sold to you at the same or at any other *Sale* and whether currently in *Bonhams'* possession or not until payment in full and in cleared funds of the *Purchase Price* and all other sums due to the *Seller* and/or *Bonhams* in respect of the *Lot*.
- 7.3 You will collect and remove the *Lot* at your own expense from *Bonhams'* custody and/or control or from the *Storage Contractor's* custody in accordance with *Bonhams'* instructions or requirements.
- 7.4 You will be wholly responsible for packing, handling and transport of the *Lot* on collection and for complying with all import or export regulations in connection with the *Lot*.
- 7.5 You will be wholly responsible for any removal, storage or other charges or *Expenses* incurred by the *Seller* if you do not remove the *Lot* in accordance with this paragraph 7 and will indemnify the *Seller* against all charges, costs, including any legal costs and fees, *Expenses* and losses suffered by the *Seller* by reason of your failure to remove the *Lot* including any charges due under any *Storage Contract*. All such sums due to the *Seller* will be payable on demand.

<b>8</b>	<b>FAILURE TO PAY FOR THE LOT</b>	<b>9</b>	<b>THE SELLER'S LIABILITY</b>	10.3	If either party to the <i>Contract for Sale</i> is prevented from performing that party's respective obligations under the <i>Contract for Sale</i> by circumstances beyond its reasonable control or if performance of its obligations would by reason of such circumstances give rise to a significantly increased financial cost to it, that party will not, for so long as such circumstances prevail, be required to perform such obligations. This paragraph does not apply to the obligations imposed on you by paragraph 6.
8.1	If the <i>Purchase Price</i> for a <i>Lot</i> is not paid to <i>Bonhams</i> in full in accordance with the <i>Contract for Sale</i> the <i>Seller</i> will be entitled, with the prior written agreement of <i>Bonhams</i> but without further notice to you, to exercise one or more of the following rights (whether through <i>Bonhams</i> or otherwise):	9.1	The <i>Seller</i> will not be liable for any injury, loss or damage caused by the <i>Lot</i> after the fall of the <i>Auctioneer's</i> hammer in respect of the <i>Lot</i> .		
8.1.1	to terminate immediately the <i>Contract for Sale</i> of the <i>Lot</i> for your breach of contract;	9.2	Subject to paragraph 9.3 below, except for breach of the express undertaking provided in paragraph 2.1.5, the <i>Seller</i> will not be liable for any breach of any term that the <i>Lot</i> will correspond with any <i>Description</i> applied to it by or on behalf of the <i>Seller</i> , whether implied by the Sale of Goods Act 1979 or otherwise.	10.4	Any notice or other communication to be given under the <i>Contract for Sale</i> must be in writing and may be delivered by hand or sent by first class post or air mail or fax transmission, if to the <i>Seller</i> , addressed c/o <i>Bonhams</i> at its address or fax number in the <i>Catalogue</i> (marked for the attention of the Company Secretary), and if to you to the address or fax number of the <i>Buyer</i> given in the <i>Bidding Form</i> (unless notice of any change of address is given in writing). It is the responsibility of the sender of the notice or communication to ensure that it is received in a legible form within any applicable time period.
8.1.2	to resell the <i>Lot</i> by auction, private treaty or any other means on giving seven days' written notice to you of the intention to resell;	9.3	Unless the <i>Seller</i> sells the <i>Lot</i> in the course of a <i>Business</i> and the <i>Buyer</i> buys it as a <i>Consumer</i> ,		
8.1.3	to retain possession of the <i>Lot</i> ;	9.3.1	the <i>Seller</i> will not be liable (whether in negligence, other tort, breach of contract or statutory duty or in restitution or under the Misrepresentation Act 1967, or in any other way) for any lack of conformity with, or inaccuracy, error, misdescription or omission in any <i>Description</i> of the <i>Lot</i> or any <i>Entry</i> or <i>Estimate</i> in relation to the <i>Lot</i> made by or on behalf of the <i>Seller</i> (whether made in writing, including in the <i>Catalogue</i> , or on the <i>Website</i> , or orally, or by conduct or otherwise) and whether made before or after this agreement or prior to or during the <i>Sale</i> ;	10.5	If any term or any part of any term of the <i>Contract for Sale</i> is held to be unenforceable or invalid, such unenforceability or invalidity will not affect the enforceability and validity of the remaining terms or the remainder of the relevant term.
8.1.4	to remove and store the <i>Lot</i> at your expense;			10.6	References in the <i>Contract for Sale</i> to <i>Bonhams</i> will, where appropriate, include reference to <i>Bonhams'</i> officers, employees and agents.
8.1.5	to take legal proceedings against you for any sum due under the <i>Contract for Sale</i> and/or damages for breach of contract;	9.3.2	the <i>Seller</i> will not be liable for any loss of <i>Business</i> , <i>Business</i> profits or revenue or income or for loss of reputation or for disruption to <i>Business</i> or wasted time on the part of the <i>Buyer</i> or of the <i>Buyer's</i> management or staff or, for any indirect losses or consequential damages of any kind, irrespective in any case of the nature, volume or source of the loss or damage alleged to be suffered, and irrespective of whether the said loss or damage is caused by or claimed in respect of any negligence, other tort, breach of contract, statutory duty, restitutionary claim or otherwise;	10.7	The headings used in the <i>Contract for Sale</i> are for convenience only and will not affect its interpretation.
8.1.6	to be paid interest on any monies due (after as well as before judgement or order) at the annual rate of 5% per annum above the base rate of National Westminster Bank Plc from time to time to be calculated on a daily basis from the date upon which such monies become payable until the date of actual payment;			10.8	In the <i>Contract for Sale</i> "including" means "including, without limitation".
8.1.7	to repossess the <i>Lot</i> (or any part thereof) which has not become your property, and for this purpose (unless the <i>Buyer</i> buys the <i>Lot</i> as a <i>Consumer</i> from the <i>Seller</i> selling in the course of a <i>Business</i> ) you hereby grant an irrevocable licence to the <i>Seller</i> by himself and to his servants or agents to enter upon all or any of your premises (with or without vehicles) during normal <i>Business</i> hours to take possession of the <i>Lot</i> or part thereof;	9.3.3	in any circumstances where the <i>Seller</i> is liable to you in respect of the <i>Lot</i> , or any act, omission, statement, or representation in respect of it, or this agreement or its performance, and whether in damages, for an indemnity or contribution or for a restitutionary remedy or in any way whatsoever, the <i>Seller's</i> liability will be limited to payment of a sum which will not exceed by way of maximum the amount of the <i>Purchase Price</i> of the <i>Lot</i> irrespective in any case of the nature, volume or source of any loss or damage alleged to be suffered or sum claimed as due, and irrespective of whether the liability arises from any negligence, other tort, breach of contract, statutory duty, bailee's duty, restitutionary claim or otherwise.	10.9	References to the singular will include reference to the plural (and vice versa) and reference to any one gender will include reference to the other genders.
8.1.8	to retain possession of any other property sold to you by the <i>Seller</i> at the <i>Sale</i> or any other auction or by private treaty until all sums due under the <i>Contract for Sale</i> shall have been paid in full in cleared funds;			10.10	Reference to a numbered paragraph is to a paragraph of the <i>Contract for Sale</i> .
8.1.9	to retain possession of, and on three months' written notice to sell, <i>Without Reserve</i> , any of your other property in the possession of the <i>Seller</i> and/or of <i>Bonhams</i> (as bailee for the <i>Seller</i> ) for any purpose (including, without limitation, other goods sold to you) and to apply any monies due to you as a result of such <i>Sale</i> in satisfaction or part satisfaction of any amounts owed to the <i>Seller</i> or to <i>Bonhams</i> ; and			10.11	Save as expressly provided in paragraph 10.12 nothing in the <i>Contract for Sale</i> confers (or purports to confer) on any person who is not a party to the <i>Contract for Sale</i> any benefit conferred by, or the right to enforce any term of, the <i>Contract for Sale</i> .
8.1.10	so long as such goods remain in the possession of the <i>Seller</i> or <i>Bonhams</i> as its bailee, to rescind the contract for the <i>Sale</i> of any other goods sold to you by the <i>Seller</i> at the <i>Sale</i> or at any other auction or by private treaty and apply any monies received from you in respect of such goods in part or full satisfaction of any amounts owed to the <i>Seller</i> or to <i>Bonhams</i> by you.	9.4	Nothing set out in paragraphs 9.1 to 9.3 above will be construed as excluding or restricting (whether directly or indirectly) any person's liability or excluding or restricting any person's rights or remedies in respect of (i) fraud, or (ii) death or personal injury caused by the <i>Seller's</i> negligence (or any person under the <i>Seller's</i> control or for whom the <i>Seller</i> is legally responsible), or (iii) acts or omissions for which the <i>Seller</i> is liable under the Occupiers Liability Act 1957, or (iv) any other liability to the extent the same may not be excluded or restricted as a matter of law.	10.12	Where the <i>Contract for Sale</i> confers an immunity from, and/or an exclusion or restriction of, the responsibility and/or liability of the <i>Seller</i> , it will also operate in favour and for the benefit of <i>Bonhams</i> , <i>Bonhams'</i> holding company and the subsidiaries of such holding company and the successors and assigns of <i>Bonhams</i> and of such companies and of any officer, employee and agent of <i>Bonhams</i> and such companies, each of whom will be entitled to rely on the relevant immunity and/or exclusion and/or restriction within and for the purposes of Contracts (Rights of Third Parties) Act 1999, which enables the benefit of a contract to be extended to a person who is not a party to the contract, and generally at law.
8.2	You agree to indemnify the <i>Seller</i> against all legal and other costs of enforcement, all losses and other <i>Expenses</i> and costs (including any monies payable to <i>Bonhams</i> in order to obtain the release of the <i>Lot</i> ) incurred by the <i>Seller</i> (whether or not court proceedings will have been issued) as a result of <i>Bonhams</i> taking steps under this paragraph 8 on a full indemnity basis together with interest thereon (after as well as before judgement or order) at the rate specified in paragraph 8.1.6 from the date upon which the <i>Seller</i> becomes liable to pay the same until payment by you.	<b>10</b>	<b>MISCELLANEOUS</b>	<b>11</b>	<b>GOVERNING LAW</b>
8.3	On any resale of the <i>Lot</i> under paragraph 8.1.2, the <i>Seller</i> will account to you in respect of any balance remaining from any monies received by him or on his behalf in respect of the <i>Lot</i> , after the payment of all sums due to the <i>Seller</i> and to <i>Bonhams</i> , within 28 days of receipt of such monies by him or on his behalf.	10.1	You may not assign either the benefit or burden of the <i>Contract for Sale</i> .		All transactions to which the <i>Contract for Sale</i> applies and all connected matters will be governed by and construed in accordance with the laws of that part of the United Kingdom where the <i>Sale</i> takes place and the <i>Seller</i> and you each submit to the exclusive jurisdiction of the courts of that part of the United Kingdom, save that the <i>Seller</i> may bring proceedings against you in any other court of competent jurisdiction to the extent permitted by the laws of the relevant jurisdiction. <i>Bonhams</i> has a complaints procedure in place.
		10.2	The <i>Seller's</i> failure or delay in enforcing or exercising any power or right under the <i>Contract for Sale</i> will not operate or be deemed to operate as a waiver of his rights under it except to the extent of any express waiver given to you in writing. Any such waiver will not affect the <i>Seller's</i> ability subsequently to enforce any right arising under the <i>Contract for Sale</i> .		

## APPENDIX 2

### BUYER'S AGREEMENT

**IMPORTANT:** These terms may be changed in advance of the *Sale* of the *Lot* to you, by the setting out of different terms in the *Catalogue* for the *Sale* and/or by placing an insert in the *Catalogue* and/or by notices at the *Sale* venue and/or by oral announcements before and during the *Sale* at the *Sale* venue. You should be alert to this possibility of changes and ask in advance of bidding if there have been any.

#### 1 THE CONTRACT

- 1.1 These terms govern the contract between *Bonhams* personally and the *Buyer*, being the person to whom a *Lot* has been knocked down by the *Auctioneer*.
- 1.2 The Definitions and Glossary contained in Appendix 3 to the *Catalogue* for the *Sale* are incorporated into this agreement and a separate copy can also be provided by us on request. Where words and phrases which are defined in the List of Definitions are used in this agreement, they are printed in italics. Reference is made in this agreement to information printed in the *Notice to Bidders*, printed in the *Catalogue* for the *Sale*, and where such information is referred to it is incorporated into this agreement.
- 1.3 Except as specified in paragraph 4 of the *Notice to Bidders* the *Contract for Sale* of the *Lot* between you and the *Seller* is made on the fall of the *Auctioneer's* hammer in respect of the *Lot*, when it is knocked down to you. At that moment a separate contract is also made between you and *Bonhams* on the terms in this *Buyer's Agreement*.
- 1.4 We act as agents for the *Seller* and are not answerable or personally responsible to you for any breach of contract or other default by the *Seller*, unless *Bonhams* sells the *Lot* as principal.
- 1.5 Our personal obligations to you are governed by this agreement and we agree, subject to the terms below, to the following obligations:
  - 1.5.1 we will, until the date and time specified in the *Notice to Bidders* or otherwise notified to you, store the *Lot* in accordance with paragraph 5;
  - 1.5.2 subject to any power of the *Seller* or us to refuse to release the *Lot* to you, we will release the *Lot* to you in accordance with paragraph 4 once you have paid to us, in cleared funds, everything due to us and the *Seller*;
  - 1.5.3 we will provide guarantees in the terms set out in paragraphs 9 and 10.
- 1.6 We do not make or give and do not agree to make or give any contractual promise, undertaking, obligation, *Guarantee*, warranty, representation of fact in relation to any *Description* of the *Lot* or any *Estimate* in relation to it, nor of the accuracy or completeness of any *Description* or *Estimate* which may have been made by us or on our behalf or by or on behalf of the *Seller* (whether made orally or in writing, including in the *Catalogue* or on *Bonhams' Website*, or by conduct, or otherwise), and whether made before or after this agreement or prior to or during the *Sale*. No such *Description* or *Estimate* is incorporated into this agreement between you and us. Any such *Description* or *Estimate*, if made by us or on our behalf, was (unless *Bonhams* itself sells the *Lot* as principal) made as agent on behalf of the *Seller*.

#### 2 PERFORMANCE OF THE CONTRACT FOR SALE

You undertake to us personally that you will observe and comply with all your obligations and undertakings to the *Seller* under the *Contract for Sale* in respect of the *Lot*.

#### 3 PAYMENT

- 3.1 Unless agreed in writing between you and us or as otherwise set out in the *Notice to Bidders*, you must pay to us by not later than 4.30pm on the second working day following the *Sale*:
  - 3.1.1 the *Purchase Price* for the *Lot*;
  - 3.1.2 a *Buyer's Premium* in accordance with the rates set out in the *Notice to Bidders*, and
  - 3.1.3 if the *Lot* is marked [AR], an *Additional Premium* which is calculated and payable in accordance with the *Notice to Bidders* together with VAT on that sum if applicable so that all sums due to us are cleared funds by the seventh working day after the *Sale*.
- 3.2 You must also pay us on demand any *Expenses* payable pursuant to this agreement.
- 3.3 All payments to us must be made in the currency in which the *Sale* was conducted, using, unless otherwise agreed by us in writing, one of the methods of payment set out in the *Notice to Bidders*. Our invoices will only be addressed to the registered *Bidder* unless the *Bidder* is acting as an agent for a named principal and we have approved that arrangement, in which case we will address the invoice to the principal.
- 3.4 Unless otherwise stated in this agreement all sums payable to us will be subject to VAT at the appropriate rate and VAT will be payable by you on all such sums.
- 3.5 We may deduct and retain for our own benefit from the monies paid by you to us the *Buyer's Premium*, the *Commission* payable by the *Seller* in respect of the *Lot*, any *Expenses* and VAT and any interest earned and/or incurred until payment to the *Seller*.
- 3.6 Time will be of the essence in relation to any payment payable to us. If you do not pay the *Purchase Price*, or any other sum due to us in accordance with this paragraph 3, we will have the rights set out in paragraph 7 below.
- 3.7 Where a number of *Lots* have been knocked down to you, any monies we receive from you will be applied firstly pro-rata to pay the *Purchase Price* of each *Lot* and secondly pro-rata to pay all amounts due to *Bonhams*.

#### 4 COLLECTION OF THE LOT

- 4.1 Subject to any power of the *Seller* or us to refuse to release the *Lot* to you, once you have paid to us, in cleared funds, everything due to the *Seller* and to us, we will release the *Lot* to you or as you may direct us in writing. The *Lot* will only be released on production of a buyer collection document, obtained from our cashier's office.
- 4.2 You must collect and remove the *Lot* at your own expense by the date and time specified in the *Notice to Bidders*, or if no date is specified, by 4.30pm on the seventh day after the *Sale*.
- 4.3 For the period referred to in paragraph 4.2, the *Lot* can be collected from the address referred to in the *Notice to Bidders* for collection on the days and times specified in the *Notice to Bidders*. Thereafter, the *Lot* may be removed elsewhere for storage and you must enquire from us as to when and where you can collect it, although this information will usually be set out in the *Notice to Bidders*.

- 4.4 If you have not collected the *Lot* by the date specified in the *Notice to Bidders*, you authorise us, acting as your agent and on your behalf, to enter into a contract (the "*Storage Contract*") with the *Storage Contractor* for the storage of the *Lot* on the then current standard terms and conditions agreed between *Bonhams* and the *Storage Contractor* (copies of which are available on request). If the *Lot* is stored at our premises storage fees at our current daily rates (currently a minimum of £3 plus VAT per *Lot* per day) will be payable from the expiry of the period referred to in paragraph 4.2. These storage fees form part of our *Expenses*.
- 4.5 Until you have paid the *Purchase Price* and any *Expenses* in full the *Lot* will either be held by us as agent on behalf of the *Seller* or held by the *Storage Contractor* as agent on behalf of the *Seller* and ourselves on the terms contained in the *Storage Contract*.
- 4.6 You undertake to comply with the terms of any *Storage Contract* and in particular to pay the charges (and all costs of moving the *Lot* into storage) due under any *Storage Contract*. You acknowledge and agree that you will not be able to collect the *Lot* from the *Storage Contractor's* premises until you have paid the *Purchase Price*, any *Expenses* and all charges due under the *Storage Contract*.
- 4.7 You will be wholly responsible for packing, handling and transport of the *Lot* on collection and for complying with all import or export regulations in connection with the *Lot*.
- 4.8 You will be wholly responsible for any removal, storage, or other charges for any *Lot* not removed in accordance with paragraph 4.2, payable at our current rates, and any *Expenses* we incur (including any charges due under the *Storage Contract*), all of which must be paid by you on demand and in any event before any collection of the *Lot* by you or on your behalf.

#### 5 STORING THE LOT

We agree to store the *Lot* until the earlier of your removal of the *Lot* or until the time and date set out in the *Notice to Bidders*, on the Sale Information Page or at the back of the catalogue (or if no date is specified, by 4.30pm on the seventh day after the *Sale*) and, subject to paragraphs 6 and 10, to be responsible as *bailee* to you for damage to or the loss or destruction of the *Lot* (notwithstanding that it is not your property before payment of the *Purchase Price*). If you do not collect the *Lot* before the time and date set out in the *Notice to Bidders* (or if no date is specified, by 4.30pm on the seventh day after the *Sale*) we may remove the *Lot* to another location, the details of which will usually be set out in the relevant section of the *Catalogue*. If you have not paid for the *Lot* in accordance with paragraph 3, and the *Lot* is moved to any third party's premises, the *Lot* will be held by such third party strictly to *Bonhams' order* and we will retain our lien over the *Lot* until we have been paid in full in accordance with paragraph 3.

#### 6 RESPONSIBILITY FOR THE LOT

- 6.1 Only on the payment of the *Purchase Price* to us will title in the *Lot* pass to you. However under the *Contract for Sale*, the risk in the *Lot* passed to you when it was knocked down to you.
- 6.2 You are advised to obtain insurance in respect of the *Lot* as soon as possible after the *Sale*.



<b>7</b>	<b>FAILURE TO PAY OR TO REMOVE THE LOT AND PART PAYMENTS</b>		
7.1	If all sums payable to us are not so paid in full at the time they are due and/or the <i>Lot</i> is not removed in accordance with this agreement, we will without further notice to you be entitled to exercise one or more of the following rights (without prejudice to any rights we may exercise on behalf of the <i>Seller</i> ):	7.3	If you pay us only part of the sums due to us such payment shall be applied firstly to the <i>Purchase Price</i> of the <i>Lot</i> (or where you have purchased more than one <i>Lot</i> pro-rata towards the <i>Purchase Price</i> of each <i>Lot</i> ) and secondly to the <i>Buyer's Premium</i> (or where you have purchased more than one <i>Lot</i> pro-rata to the <i>Buyer's Premium</i> on each <i>Lot</i> ) and thirdly to any other sums due to us.
7.1.1	to terminate this agreement immediately for your breach of contract;	7.4	We will account to you in respect of any balance we hold remaining from any monies received by us in respect of any <i>Sale</i> of the <i>Lot</i> under our rights under this paragraph 7 after the payment of all sums due to us and/or the <i>Seller</i> within 28 days of receipt by us of all such sums paid to us.
7.1.2	to retain possession of the <i>Lot</i> ;	<b>8</b>	<b>CLAIMS BY OTHER PERSONS IN RESPECT OF THE LOT</b>
7.1.3	to remove, and/or store the <i>Lot</i> at your expense;	8.1	Whenever it becomes apparent to us that the <i>Lot</i> is the subject of a claim by someone other than you and other than the <i>Seller</i> (or that such a claim can reasonably be expected to be made), we may, at our absolute discretion, deal with the <i>Lot</i> in any manner which appears to us to recognise the legitimate interests of ourselves and the other parties involved and lawfully to protect our position and our legitimate interests. Without prejudice to the generality of the discretion and by way of example, we may:
7.1.4	to take legal proceedings against you for payment of any sums payable to us by you (including the <i>Purchase Price</i> ) and/or damages for breach of contract;	8.1.1	retain the <i>Lot</i> to investigate any question raised or reasonably expected by us to be raised in relation to the <i>Lot</i> ; and/or
7.1.5	to be paid interest on any monies due to us (after as well as before judgement or order) at the annual rate of 5% per annum above the base lending rate of National Westminster Bank Plc from time to time to be calculated on a daily basis from the date upon which such monies become payable until the date of actual payment;	8.1.2	deliver the <i>Lot</i> to a person other than you; and/or
7.1.6	to repossess the <i>Lot</i> (or any part thereof) which has not become your property, and for this purpose (unless you buy the <i>Lot</i> as a <i>Consumer</i> ) you hereby grant an irrevocable licence to us, by ourselves, our servants or agents, to enter upon all or any of your premises (with or without vehicles) during normal business hours to take possession of any <i>Lot</i> or part thereof;	8.1.3	commence interpleader proceedings or seek any other order of any court, mediator, arbitrator or government body; and/or
7.1.7	to sell the <i>Lot Without Reserve</i> by auction, private treaty or any other means on giving you three months' written notice of our intention to do so;	8.1.4	require an indemnity and/or security from you in return for pursuing a course of action agreed to by you.
7.1.8	to retain possession of any of your other property in our possession for any purpose (including, without limitation, other goods sold to you or with us for <i>Sale</i> ) until all sums due to us have been paid in full;	8.2	The discretion referred to in paragraph 8.1:
7.1.9	to apply any monies received from you for any purpose whether at the time of your default or at any time thereafter in payment or part payment of any sums due to us by you under this agreement;	8.2.1	may be exercised at any time during which we have actual or constructive possession of the <i>Lot</i> , or at any time after such possession, where the cessation of such possession has occurred by reason of any decision, order or ruling of any court, mediator, arbitrator or government body; and
7.1.10	on three months' written notice to sell, <i>Without Reserve</i> , any of your other property in our possession or under our control for any purpose (including other goods sold to you or with us for <i>Sale</i> ) and to apply any monies due to you as a result of such <i>Sale</i> in payment or part payment of any amounts owed to us;	8.2.2	will not be exercised unless we believe that there exists a serious prospect of a good arguable case in favour of the claim.
7.1.11	refuse to allow you to register for a future <i>Sale</i> or to reject a bid from you at any future <i>Sale</i> or to require you to pay a deposit before any bid is accepted by us at any future <i>Sale</i> in which case we will be entitled to apply such deposit in payment or part payment, as the case may be, of the <i>Purchase Price</i> of any <i>Lot</i> of which you are the <i>Buyer</i> .	<b>9</b>	<b>FORGERIES</b>
7.2	You agree to indemnify us against all legal and other costs, all losses and all other <i>Expenses</i> (whether or not court proceedings will have been issued) incurred by us as a result of our taking steps under this paragraph 7 on a full indemnity basis together with interest thereon (after as well as before judgement or order) at the rate specified in paragraph 7.1.5 from the date upon which we become liable to pay the same until payment by you.	9.1	We undertake a personal responsibility for any <i>Forgery</i> in accordance with the terms of this paragraph 9.
		9.2	Paragraph 9 applies only if:
		9.2.1	your name appears as the named person to whom the original invoice was made out by us in respect of the <i>Lot</i> and that invoice has been paid; and
		9.2.2	you notify us in writing as soon as reasonably practicable after you have become aware that the <i>Lot</i> is or may be a <i>Forgery</i> , and in any event within one year after the <i>Sale</i> , that the <i>Lot</i> is a <i>Forgery</i> ; and
		9.2.3	within one month after such notification has been given, you return the <i>Lot</i> to us in the same condition as it was at the time of the <i>Sale</i> , accompanied by written evidence that the <i>Lot</i> is a <i>Forgery</i> and details of the <i>Sale</i> and <i>Lot</i> number sufficient to identify the <i>Lot</i> .
		9.3	Paragraph 9 will not apply in respect of a <i>Forgery</i> if:
		9.3.1	the <i>Entry</i> in relation to the <i>Lot</i> contained in the <i>Catalogue</i> reflected the then accepted general opinion of scholars and experts or fairly indicated that there was a conflict of such opinion or reflected the then current opinion of an expert acknowledged to be a leading expert in the relevant field; or
		9.3.2	it can be established that the <i>Lot</i> is a <i>Forgery</i> only by means of a process not generally accepted for use until after the date on which the <i>Catalogue</i> was published or by means of a process which it was unreasonable in all the circumstances for us to have employed.
		9.4	You authorise us to carry out such processes and tests on the <i>Lot</i> as we in our absolute discretion consider necessary to satisfy ourselves that the <i>Lot</i> is or is not a <i>Forgery</i> .
		9.5	If we are satisfied that a <i>Lot</i> is a <i>Forgery</i> we will (as principal) purchase the <i>Lot</i> from you and you will transfer the title to the <i>Lot</i> in question to us, with full title guarantee, free from any liens, charges, encumbrances and adverse claims, in accordance with the provisions of Sections 12(1) and 12(2) of the Sale of Goods Act 1979 and we will pay to you an amount equal to the sum of the <i>Purchase Price</i> , <i>Buyer's Premium</i> , VAT and <i>Expenses</i> paid by you in respect of the <i>Lot</i> .
		9.6	The benefit of paragraph 9 is personal to, and incapable of assignment by, you.
		9.7	If you sell or otherwise dispose of your interest in the <i>Lot</i> , all rights and benefits under this paragraph will cease.
		9.8	Paragraph 9 does not apply to a <i>Lot</i> made up of or including a Chinese painting or Chinese paintings, a motor vehicle or motor vehicles, a <i>Stamp</i> or <i>Stamps</i> or a <i>Book</i> or <i>Books</i> .
		<b>10</b>	<b>OUR LIABILITY</b>
		10.1	We will not be liable whether in negligence, other tort, breach of contract or statutory duty or in restitution or under the Misrepresentation Act 1967 or in any other way for lack of conformity with or any inaccuracy, error, misdescription or omission in any <i>Description</i> of the <i>Lot</i> or any <i>Entry</i> or <i>Estimate</i> in respect of it, made by us or on our behalf or by or on behalf of the <i>Seller</i> (whether made in writing, including in the <i>Catalogue</i> , or on the <i>Bonhams' Website</i> , or orally, or by conduct or otherwise) and whether made before or after this agreement or prior to or during the <i>Sale</i> .
		10.2	Our duty to you while the <i>Lot</i> is at your risk and/or your property and in our custody and/or control is to exercise reasonable care in relation to it, but we will not be responsible for damage to the <i>Lot</i> or to other persons or things caused by:
		10.2.1	handling the <i>Lot</i> if it was affected at the time of <i>Sale</i> to you by woodworm and any damage is caused as a result of it being affected by woodworm; or
		10.2.2	changes in atmospheric pressure; nor will we be liable for:
		10.2.3	damage to tension stringed musical instruments; or
		10.2.4	damage to gilded picture frames, plaster picture frames or picture frame glass; and if the <i>Lot</i> is or becomes dangerous, we may dispose of it without notice to you in advance in any manner we think fit and we will be under no liability to you for doing so.

10.3.1	We will not be liable to you for any loss of <i>Business</i> , <i>Business</i> profits, revenue or income or for loss of <i>Business</i> reputation or for disruption to <i>Business</i> or wasted time on the part of the <i>Buyer's</i> management or staff or, if you are buying the <i>Lot</i> in the course of a <i>Business</i> , for any indirect losses or consequential damages of any kind, irrespective in any case of the nature, volume or source of the loss or damage alleged to be suffered, and irrespective of whether the said loss or damage is caused by or claimed in respect of any negligence, other tort, breach of contract, statutory duty, bailee's duty, a restitutionary claim or otherwise.	the <i>Entry</i> in the <i>Catalogue</i> in respect of the <i>Lot</i> reflected the then accepted general opinion of scholars and experts or fairly indicated that there was a conflict of such opinion; or	12.7	The headings used in this agreement are for convenience only and will not affect its interpretation.
10.3.2	Unless you buy the <i>Lot</i> as a <i>Consumer</i> , in any circumstances where we are liable to you in respect of a <i>Lot</i> , or any act, omission, statement, representation in respect of it, or this agreement or its performance, and whether in damages, for an indemnity or contribution or for a restitutionary remedy or in any way whatsoever, our liability will be limited to payment of a sum which will not exceed by way of maximum the amount of the <i>Purchase Price</i> of the <i>Lot</i> plus <i>Buyer's Premium</i> (less any sum you may be entitled to recover from the <i>Seller</i> ) irrespective in any case of the nature, volume or source of any loss or damage alleged to be suffered or sum claimed as due, and irrespective of whether the liability arises from negligence, other tort, breach of contract, statutory duty, bailee's duty, a restitutionary claim or otherwise.	it can be established that the <i>Lot</i> is a non-conforming <i>Lot</i> only by means of a process not generally accepted for use until after the date on which the <i>Catalogue</i> was published or by means of a process which it was unreasonable in all the circumstances for us to have employed; or	12.8	In this agreement "including" means "including, without limitation".
	You may wish to protect yourself against loss by obtaining insurance.	the <i>Lot</i> comprises atlases, maps, autographs, manuscripts, extra illustrated books, music or periodical publications; or	12.9	References to the singular will include reference to the plural (and vice versa) and reference to any one gender will include reference to the other genders.
10.4	Nothing set out above will be construed as excluding or restricting (whether directly or indirectly) any person's liability or excluding or restricting any person's rights or remedies in respect of (i) fraud, or (ii) death or personal injury caused by our negligence (or any person under our control or for whom we are legally responsible), or (iii) acts or omissions for which we are liable under the Occupiers Liability Act 1957, or (iv) any other liability to the extent the same may not be excluded or restricted as a matter of law, or (v) under our undertaking in paragraph 9 of these conditions.	the <i>Lot</i> was listed in the <i>Catalogue</i> under "collections" or "collections and various" or the <i>Lot</i> was stated in the <i>Catalogue</i> to comprise or contain a collection, issue or <i>Books</i> which are undescribed or the missing text or illustrations are referred to or the relevant parts of the <i>Book</i> contain blanks, half titles or advertisements.	12.10	Reference to a numbered paragraph is to a paragraph of this agreement.
11	<b>BOOKS MISSING TEXT OR ILLUSTRATIONS</b>  Where the <i>Lot</i> is made up wholly of a <i>Book</i> or <i>Books</i> and any <i>Book</i> does not contain text or illustrations (in either case referred to as a "non-conforming <i>Lot</i> "), we undertake a personal responsibility for such a non-conforming <i>Lot</i> in accordance with the terms of this paragraph, if:  the original invoice was made out by us to you in respect of the <i>Lot</i> and that invoice has been paid; and  you notify us in writing as soon as reasonably practicable after you have become aware that the <i>Lot</i> is or may be a non-conforming <i>Lot</i> , and in any event within 20 days after the <i>Sale</i> (or such longer period as we may agree in writing) that the <i>Lot</i> is a non-conforming <i>Lot</i> ; and  within 20 days of the date of the relevant <i>Sale</i> (or such longer period as we may agree in writing) you return the <i>Lot</i> to us in the same condition as it was at the time of the <i>Sale</i> , accompanied by written evidence that the <i>Lot</i> is a non-conforming <i>Lot</i> and details of the <i>Sale</i> and <i>Lot</i> number sufficient to identify the <i>Lot</i> .  but not if:  the <i>Entry</i> in the <i>Catalogue</i> in respect of the <i>Lot</i> indicates that the rights given by this paragraph do not apply to it; or	If we are reasonably satisfied that a <i>Lot</i> is a non-conforming <i>Lot</i> , we will (as principal) purchase the <i>Lot</i> from you and you will transfer the title to the <i>Lot</i> in question to us, with full title guarantee, free from any liens, charges, encumbrances and adverse claims and we will pay to you an amount equal to the sum of the <i>Purchase Price</i> and <i>Buyer's Premium</i> paid by you in respect of the <i>Lot</i> .  The benefit of paragraph 10 is personal to, and incapable of assignment by, you and if you sell or otherwise dispose of your interest in the <i>Lot</i> , all rights and benefits under this paragraph will cease.	12.11	Save as expressly provided in paragraph 12.12 nothing in this agreement confers (or purports to confer) on any person who is not a party to this agreement any benefit conferred by, or the right to enforce any term of, this agreement.
			12.12	Where this agreement confers an immunity from, and/or an exclusion or restriction of, the responsibility and/or liability of <i>Bonhams</i> , it will also operate in favour and for the benefit of <i>Bonhams'</i> holding company and the subsidiaries of such holding company and the successors and assigns of <i>Bonhams</i> and of such companies and of any officer, employee and agent of <i>Bonhams</i> and such companies, each of whom will be entitled to rely on the relevant immunity and/or exclusion and/or restriction within and for the purposes of Contracts (Rights of Third Parties) Act 1999, which enables the benefit of a contract to be extended to a person who is not a party to the contract, and generally at law.
		<b>12 MISCELLANEOUS</b>	<b>13</b>	<b>GOVERNING LAW</b>
		12.1 You may not assign either the benefit or burden of this agreement.		All transactions to which this agreement applies and all connected matters will be governed by and construed in accordance with the laws of that part of the United Kingdom where the <i>Sale</i> takes (or is to take) place and we and you each submit to the exclusive jurisdiction of the courts of that part of the United Kingdom, save that we may bring proceedings against you in any other court of competent jurisdiction to the extent permitted by the laws of the relevant jurisdiction. <i>Bonhams</i> has a complaints procedure in place.
		12.2 Our failure or delay in enforcing or exercising any power or right under this agreement will not operate or be deemed to operate as a waiver of our rights under it except to the extent of any express waiver given to you in writing. Any such waiver will not affect our ability subsequently to enforce any right arising under this agreement.		<b>DATA PROTECTION – USE OF YOUR INFORMATION</b>
		12.3 If either party to this agreement is prevented from performing that party's respective obligations under this agreement by circumstances beyond its reasonable control or if performance of its obligations would by reason of such circumstances give rise to a significantly increased financial cost to it, that party will not, for so long as such circumstances prevail, be required to perform such obligations. This paragraph does not apply to the obligations imposed on you by paragraph 3.		Where we obtain any personal information about you, we shall only use it in accordance with the terms of our Privacy Policy (subject to any additional specific consent(s) you may have given at the time your information was disclosed). A copy of our Privacy Policy can be found on our <i>Website</i> <a href="http://www.bonhams.com">www.bonhams.com</a> or requested by post from Customer Services Department, 101 New Bond Street, London W1S 1SR, United Kingdom or by email from <a href="mailto:info@bonhams.com">info@bonhams.com</a> .
		12.4 Any notice or other communication to be given under this agreement must be in writing and may be delivered by hand or sent by first class post or air mail or fax transmission (if to <i>Bonhams</i> marked for the attention of the Company Secretary), to the address or fax number of the relevant party given in the <i>Contract Form</i> (unless notice of any change of address is given in writing). It is the responsibility of the sender of the notice or communication to ensure that it is received in a legible form within any applicable time period.		<b>APPENDIX 3</b>
		12.5 If any term or any part of any term of this agreement is held to be unenforceable or invalid, such unenforceability or invalidity will not affect the enforceability and validity of the remaining terms or the remainder of the relevant term.		<b>DEFINITIONS AND GLOSSARY</b>
		12.6 References in this agreement to <i>Bonhams</i> will, where appropriate, include reference to <i>Bonhams'</i> officers, employees and agents.		Where these Definitions and Glossary are incorporated, the following words and phrases used have (unless the context otherwise requires) the meanings given to them below. The Glossary is to assist you to understand words and phrases which have a specific legal meaning with which you may not be familiar.
				<b>LIST OF DEFINITIONS</b>
				"Additional Premium" a premium, calculated in accordance with the <i>Notice to Bidders</i> , to cover <i>Bonhams' Expenses</i> relating to the payment of royalties under the Artists Resale Right Regulations 2006 which is payable by the <i>Buyer</i> to <i>Bonhams</i> on any <i>Lot</i> marked [AR] which sells for a <i>Hammer Price</i> which together with the <i>Buyer's Premium</i> (but excluding any VAT) equals or exceeds 1000 euros (converted into the currency of the <i>Sale</i> using the European Central Bank Reference rate prevailing on the date of the <i>Sale</i> ). "Auctioneer" the representative of <i>Bonhams</i> conducting the <i>Sale</i> .

**"Bidder"** a person who has completed a *Bidding Form*.

**"Bidding Form"** our Bidding Registration Form, our Absentee Bidding Form or our Telephone Bidding Form.

**"Bonhams"** Bonhams 1793 Limited or its successors or assigns. *Bonhams* is also referred to in the *Buyer's Agreement*, the Conditions of Business and the *Notice to Bidders* by the words "we", "us" and "our".

**"Book"** a printed *Book* offered for *Sale* at a specialist *Book Sale*.

**"Business"** includes any trade, *Business* and profession.

**"Buyer"** the person to whom a *Lot* is knocked down by the *Auctioneer*. The *Buyer* is also referred to in the *Contract for Sale* and the *Buyer's Agreement* by the words "you" and "your".

**"Buyer's Agreement"** the contract entered into by *Bonhams* with the *Buyer* (see Appendix 2 in the *Catalogue*).

**"Buyer's Premium"** the sum calculated on the *Hammer Price* at the rates stated in the *Notice to Bidders*.

**"Catalogue"** the *Catalogue* relating to the relevant *Sale*, including any representation of the *Catalogue* published on our *Website*.

**"Commission"** the *Commission* payable by the *Seller* to *Bonhams* calculated at the rates stated in the *Contract Form*.

**"Condition Report"** a report on the physical condition of a *Lot* provided to a *Bidder* or potential *Bidder* by *Bonhams* on behalf of the *Seller*.

**"Conditions of Sale"** the *Notice to Bidders*, *Contract for Sale*, *Buyer's Agreement* and Definitions and Glossary.

**"Consignment Fee"** a fee payable to *Bonhams* by the *Seller* calculated at rates set out in the Conditions of Business.

**"Consumer"** a natural person who is acting for the relevant purpose outside his trade, *Business* or profession.

**"Contract Form"** the *Contract Form*, or vehicle *Entry form*, as applicable, signed by or on behalf of the *Seller* listing the *Lots* to be offered for *Sale* by *Bonhams*.

**"Contract for Sale"** the *Sale* contract entered into by the *Seller* with the *Buyer* (see Appendix 1 in the *Catalogue*).

**"Contractual Description"** the only *Description* of the *Lot* (being that part of the *Entry* about the *Lot* in the *Catalogue* which is in bold letters, any photograph (except for the colour) and the contents of any *Condition Report*) to which the *Seller* undertakes in the *Contract of Sale* the *Lot* corresponds.

**"Description"** any statement or representation in any way descriptive of the *Lot*, including any statement or representation relating to its authorship, attribution, condition, provenance, authenticity, style, period, age, suitability, quality, origin, value, estimated selling price (including the *Hammer Price*).

**"Entry"** a written statement in the *Catalogue* identifying the *Lot* and its *Lot* number which may contain a *Description* and illustration(s) relating to the *Lot*.

**"Estimate"** a statement of our opinion of the range within which the hammer is likely to fall.

**"Expenses"** charges and *Expenses* paid or payable by *Bonhams* in respect of the *Lot* including legal *Expenses*, banking charges and *Expenses* incurred as a result of an electronic transfer of money, charges and *Expenses* for loss and damage cover, insurance, *Catalogue* and other reproductions and illustrations, any customs duties, advertising, packing or shipping costs, reproductions rights' fees, taxes, levies, costs of testing, searches or enquiries, preparation of the *Lot* for *Sale*, storage charges, removal charges, removal charges or costs of collection from the *Seller* as the *Seller's* agents or from a defaulting *Buyer*, plus *VAT* if applicable.

**"Forgery"** an imitation intended by the maker or any other person to deceive as to authorship, attribution, origin, authenticity, style, date, age, period, provenance, culture, source or composition, which at the date of the *Sale* had a value materially less than it would have had if the *Lot* had not been such an imitation, and which is not stated to be such an imitation in any description of the *Lot*. A *Lot* will not be a *Forgery* by reason of any damage to, and/or restoration and/or modification work (including repainting or over painting) having been carried out on the *Lot*, where that damage, restoration or modification work (as the case may be) does not substantially affect the identity of the *Lot* as one conforming to the *Description* of the *Lot*.

**"Guarantee"** the obligation undertaken personally by *Bonhams* to the *Buyer* in respect of any *Forgery* and, in the case of specialist *Stamp Sales* and/or specialist *Book Sales*, a *Lot* made up of a *Stamp* or *Stamps* or a *Book* or *Books* as set out in the *Buyer's Agreement*.

**"Hammer Price"** the price in the currency in which the *Sale* is conducted at which a *Lot* is knocked down by the *Auctioneer*.

**"Loss and Damage Warranty"** means the warranty described in paragraph 8.2 of the Conditions of Business.

**"Loss and Damage Warranty Fee"** means the fee described in paragraph 8.2.3 of the Conditions of Business.

**"Lot"** any item consigned to *Bonhams* with a view to its *Sale* at auction or by private treaty (and reference to any *Lot* will include, unless the context otherwise requires, reference to individual items comprised in a group of two or more items offered for *Sale* as one *Lot*).

**"Motoring Catalogue Fee"** a fee payable by the *Seller* to *Bonhams* in consideration of the additional work undertaken by *Bonhams* in respect of the cataloguing of motor vehicles and in respect of the promotion of *Sales* of motor vehicles.

**"New Bond Street"** means *Bonhams'* saleroom at 101 New Bond Street, London W1S 1SR.

**"Notional Charges"** the amount of *Commission* and *VAT* which would have been payable if the *Lot* had been sold at the *Notional Price*.

**"Notional Fee"** the sum on which the *Consignment Fee* payable to *Bonhams* by the *Seller* is based and which is calculated according to the formula set out in the Conditions of Business.

**"Notional Price"** the latest in time of the average of the high and low *Estimates* given by us to you or stated in the *Catalogue* or, if no such *Estimates* have been given or stated, the *Reserve* applicable to the *Lot*.

**"Notice to Bidders"** the notice printed at the back or front of our *Catalogues*.

**"Purchase Price"** the aggregate of the *Hammer Price* and *VAT* on the *Hammer Price* (where applicable), the *Buyer's Premium* and *VAT* on the *Buyer's Premium* and any *Expenses*.

**"Reserve"** the minimum price at which a *Lot* may be sold (whether at auction or by private treaty).

**"Sale"** the auction *Sale* at which a *Lot* is to be offered for *Sale* by *Bonhams*.

**"Sale Proceeds"** the net amount due to the *Seller* from the *Sale* of a *Lot*, being the *Hammer Price* less the *Commission*, any *VAT* chargeable thereon, *Expenses* and any other amount due to us in whatever capacity and howsoever arising.

**"Seller"** the person who offers the *Lot* for *Sale* named on the *Contract Form*. Where the person so named identifies on the form another person as acting as his agent, or where the person named on the *Contract Form* acts as an agent for a principal (whether such agency is disclosed to *Bonhams* or not), *"Seller"* includes both the agent and the principal who shall be jointly and severally liable as such. The *Seller* is also referred to in the Conditions of Business by the words "you" and "your".

**"Specialist Examination"** a visual examination of a *Lot* by a specialist on the *Lot*.

**"Stamp"** means a postage *Stamp* offered for *Sale* at a Specialist *Stamp Sale*.

**"Standard Examination"** a visual examination of a *Lot* by a non-specialist member of *Bonhams'* staff.

**"Storage Contract"** means the contract described in paragraph 8.3.3 of the Conditions of Business or paragraph 4.4 of the *Buyer's Agreement* (as appropriate).

**"Storage Contractor"** means the company identified as such in the *Catalogue*.

**"Terrorism"** means any act or threatened act of terrorism, whether any person is acting alone or on behalf of or in connection with any organisation(s) and/or government(s), committed for political, religious or ideological or similar purposes including, but not limited to, the intention to influence any government and/or put the public or any section of the public into fear.

**"Trust Account"** the bank account of *Bonhams* into which all sums received in respect of the *Purchase Price* of any *Lot* will be paid, such account to be a distinct and separate account to *Bonhams'* normal business bank account.

**"VAT"** value added tax at the prevailing rate at the date of the *Sale* in the United Kingdom.

**"Website"** *Bonhams Website* at [www.bonhams.com](http://www.bonhams.com)

**"Withdrawal Notice"** the *Seller's* written notice to *Bonhams* revoking *Bonhams'* instructions to sell a *Lot*.

**"Without Reserve"** where there is no minimum price at which a *Lot* may be sold (whether at auction or by private treaty).

## GLOSSARY

The following expressions have specific legal meanings with which you may not be familiar. The following glossary is intended to give you an understanding of those expressions but is not intended to limit their legal meanings:

**"artist's resale right"**: the right of the creator of a work of art to receive a payment on *Sales* of that work subsequent to the original *Sale* of that work by the creator of it as set out in the Artists Resale Right Regulations 2006.

**"bailee"**: a person to whom goods are entrusted.

**"indemnity"**: an obligation to put the person who has the benefit of the indemnity in the same position in which he would have been, had the circumstances giving rise to the indemnity not arisen and the expression "indemnify" is construed accordingly.

**"interpleader proceedings"**: proceedings in the Courts to determine ownership or rights over a *Lot*.

**"knocked down"**: when a *Lot* is sold to a *Bidder*, indicated by the fall of the hammer at the *Sale*.

**"lien"**: a right for the person who has possession of the *Lot* to retain possession of it.

**"risk"**: the possibility that a *Lot* may be lost, damaged, destroyed, stolen, or deteriorate in condition or value.

**"title"**: the legal and equitable right to the ownership of a *Lot*.

**"tort"**: a legal wrong done to someone to whom the wrong doer has a duty of care.

## SALE OF GOODS ACT 1979

The following is an extract from the Sale of Goods Act 1979:

"Section 12 Implied terms about title, etc

- (1) In a contract of sale, other than one to which subsection (3) below applies, there is an implied term on the part of the seller that in the case of a sale he has a right to sell the goods, and in the case of an agreement to sell he will have such a right at the time when the property is to pass.
- (2) In a contract of sale, other than one to which subsection (3) below applies, there is also an implied term that-
  - (a) the goods are free, and will remain free until the time when the property is to pass, from any charge or encumbrance not disclosed or known to the buyer before the contract is made, and
  - (b) the buyer will enjoy quiet possession of the goods except in so far as it may be disturbed by the owner or other person entitled to the benefit of any charge or encumbrance so disclosed or known.
- (3) This subsection applies to a contract of sale in the case of which there appears from the contract or is to be inferred from its circumstances an intention that the seller should transfer only such title as he or a third person may have.
- (4) In a contract to which subsection (3) above applies there is an implied term that all charges or encumbrances known to the seller and not known to the buyer have been disclosed to the buyer before the contract is made.
- (5) In a contract to which subsection (3) above applies there is also an implied term that none of the following will disturb the buyer's quiet possession of the goods, namely:
  - (a) the seller;
  - (b) in a case where the parties to the contract intend that the seller should transfer only such title as a third person may have, that person;
  - (c) anyone claiming through or under the seller or that third person otherwise than under a charge or encumbrance disclosed or known to the buyer before the contract is made.
- (5A) As regards England and Wales and Northern Ireland, the term implied by subsection (1) above is a condition and the terms implied by subsections (2), (4) and (5) above are warranties."

# Bonhams Specialist Departments

## 19th Century Paintings

UK  
Charles O' Brien  
+44 20 7468 8360  
U.S.A  
Madalina Lazen  
+1 212 644 9108

## 20th Century British Art

Matthew Bradbury  
+44 20 7468 8295

## Aboriginal Art

Francesca Cavazzini  
+61 2 8412 2222

## African, Oceanic & Pre-Columbian Art

UK  
Philip Keith  
+44 2920 727 980  
U.S.A  
Fredric Backlar  
+1 323 436 5416

## American Paintings

Alan Fausel  
+1 212 644 9039

## Antiquities

Madeleine Perridge  
+44 20 7468 8226

## Antique Arms & Armour

UK  
David Williams  
+44 20 7393 3807  
U.S.A  
Paul Carella  
+1 415 503 3360

## Art Collections, Estates & Valuations

Harvey Cammell  
+44 (0) 20 7468 8340

## Art Nouveau & Decorative Art & Design

UK  
Mark Oliver  
+44 20 7393 3856  
U.S.A  
Frank Maraschiello  
+1 212 644 9059

## Australian Art

Merryn Schriever  
+61 2 8412 2222  
Alex Clark  
+61 3 8640 4088

## Australian Colonial Furniture and Australiana

+1 415 861 7500

## Books, Maps & Manuscripts

UK  
Matthew Haley  
+44 20 7393 3817  
U.S.A  
Christina Geiger  
+1 212 644 9094

## British & European Glass

UK  
Simon Cottle  
+44 20 7468 8383  
U.S.A.  
Suzy Pai  
+1 415 503 3343

## British & European Porcelain & Pottery

UK  
John Sandon  
+44 20 7468 8244  
U.S.A  
Peter Scott  
+1 415 503 3326

## California & American Paintings

Scot Levitt  
+1 323 436 5425

## Carpets

UK  
Mark Dance  
+44 8700 27361  
U.S.A.  
Hadji Rahimipour  
+1 415 503 3392

## Chinese & Asian Art

UK  
Asaph Hyman  
+44 20 7468 5888  
U.S.A  
Dessa Goddard  
+1 415 503 3333  
HONG KONG  
+852 3607 0010  
AUSTRALIA  
Yvett Klein  
+61 2 8412 2222

## Clocks

UK  
James Stratton  
+44 20 7468 8364  
U.S.A  
Jonathan Snellenburg  
+1 212 461 6530

## Coins & Medals

UK  
John Millensted  
+44 20 7393 3914  
U.S.A  
Paul Song  
+1 323 436 5455

## Contemporary Art

UK  
Ralph Taylor  
+44 20 7447 7403  
U.S.A  
Jeremy Goldsmith  
+1 917 206 1656

## Costume & Textiles

Claire Browne  
+44 1564 732969

## Entertainment Memorabilia

UK  
+44 20 7393 3844  
U.S.A  
Catherine Williamson  
+1 323 436 5442

## Furniture & Works of Art

UK  
Fergus Lyons  
+44 20 7468 8221  
U.S.A  
Jeffrey Smith  
+1 415 503 3413

## Greek Art

Olympia Pappa  
+44 20 7468 8314

## Golf Sporting Memorabilia

Kevin Mcgimpsey  
+44 1244 353123

## Irish Art

Penny Day  
+44 20 7468 8366

## Impressionist & Modern Art

UK  
India Phillips  
+44 20 7468 8328  
U.S.A  
Tanya Wells  
+1 917 206 1685

## Islamic & Indian Art

Claire Penhallurick  
+44 20 7468 8249

## Japanese Art

UK  
Suzannah Yip  
+44 20 7468 8368  
U.S.A  
Jeff Olson  
+1 212 461 6516

## Jewellery

UK  
Jean Ghika  
+44 20 7468 8282  
U.S.A  
Susan Abeles  
+1 212 461 6525  
AUSTRALIA  
Anellie Manolas  
+61 2 8412 2222  
HONG KONG  
Graeme Thompson  
+852 3607 0006

## Marine Art

UK  
Veronique Scorer  
+44 20 7393 3962  
U.S.A  
Gregg Dietrich  
+1 917 206 1697

## Mechanical Music

Jon Baddeley  
+44 20 7393 3872

## Modern, Contemporary & Latin American Art

U.S.A  
Alexis Chompaisal  
+1 323 436 5469

## Modern Design

Gareth Williams  
+44 20 7468 5879

To e-mail any of the below use the first name dot second name @bonhams.com eg. charles.obrien@bonhams.com

## Motor Cars

UK  
Tim Schofield  
+44 20 7468 5804  
U.S.A  
Mark Osborne  
+1 415 503 3353  
EUROPE  
Philip Kantor  
+32 476 879 471

## Automobilia

UK  
Toby Wilson  
+44 8700 273 619  
U.S.A  
Kurt Forry  
+1 415 391 4000

## Motorcycles

Ben Walker  
+44 8700 273616  
Automobilia  
Adrian Papiros  
+44 8700 273621

## Musical Instruments

Philip Scott  
+44 20 7393 3855

## Native American Art

Jim Haas  
+1 415 503 3294

## Natural History

U.S.A  
Claudia Florian  
+1 323 436 5437

## Old Master Pictures

UK  
Andrew Mckenzie  
+44 20 7468 8261  
U.S.A  
Mark Fisher  
+1 323 436 5488

## Orientalist Art

Charles O'Brien  
+44 20 7468 8360

## Photography

U.S.A  
Judith Eurich  
+1 415 503 3259

## Portrait Miniatures

UK  
+44 20 7393 3986

## Prints and Multiples

UK  
Rupert Worrall  
+44 20 7468 8262  
U.S.A  
Judith Eurich  
+1 415 503 3259

## Russian Art

UK  
Sophie Law  
+44 20 7468 8334  
U.S.A  
Yelena Harbick  
+1 212 644 9136

## Scientific Instruments

Jon Baddeley  
+44 20 7393 3872  
U.S.A.  
Jonathan Snellenburg  
+1 212 461 6530

## Scottish Pictures

Chris Brickley  
+44 131 240 2297

## Silver & Gold Boxes

UK  
Michael Moorcroft  
+44 20 7468 8241  
U.S.A  
Aileen Ward  
+1 800 223 5463

## South African Art

Giles Peppiatt  
+44 20 7468 8355

## Sporting Guns

Patrick Hawes  
+44 20 7393 3815

## Toys & Dolls

Leigh Gotch  
+44 20 8963 2839

## Travel Pictures

Veronique Scorer  
+44 20 7393 3962

## Urban Art

Gareth Williams  
+44 20 7468 5879

## Watches & Wristwatches

UK  
+44 20 7447 7412  
U.S.A.  
Jonathan Snellenburg  
+1 212 461 6530  
HONG KONG  
Nick Biebuyck  
+852 2918 4321

## Whisky

UK  
Martin Green  
+44 1292 520000  
U.S.A  
Joseph Hyman  
+1 917 206 1661  
HONG KONG  
Daniel Lam  
+852 3607 0004

## Wine

UK  
Richard Harvey  
+44 (0) 20 7468 5811  
U.S.A  
Doug Davidson  
+1 415 503 3363  
HONG KONG  
Daniel Lam  
+852 3607 0004



UNITED KINGDOM

**London**  
101 New Bond Street •  
London W1S 1SR  
+44 20 7447 7447  
+44 20 7447 7400 fax

Montpelier Street •  
London SW7 1HH  
+44 20 7393 3900  
+44 20 7393 3905 fax

**South East  
England**

**Brighton & Hove**  
19 Palmeira Square  
Hove, East Sussex  
BN3 2JN  
+44 1273 220 000  
+44 1273 220 335 fax

**Guildford**  
Millmead,  
Guildford,  
Surrey GU2 4BE  
+44 1483 504 030  
+44 1483 450 205 fax

**Isle of Wight**  
+44 1273 220 000

Representative:  
**Kent**  
George Dawes  
+44 1483 504 030

**West Sussex**  
+44 (0) 1273 220 000

**South West  
England**

**Bath**  
Queen Square House  
Charlotte Street  
Bath BA1 2LL  
+44 1225 788 988  
+44 1225 446 675 fax

**Cornwall – Truro**  
36 Lemon Street  
Truro  
Cornwall  
TR1 2NR  
+44 1872 250 170  
+44 1872 250 179 fax

**Exeter**  
The Lodge  
Southernhay West Exeter,  
Devon  
EX1 1JG  
+44 1392 425 264  
+44 1392 494 561 fax

**Winchester**  
The Red House  
Hyde Street  
Winchester  
Hants SO23 7DX  
+44 1962 862 515  
+44 1962 865 166 fax

**Tetbury**  
22a Long Street  
Tetbury  
Gloucestershire  
GL8 8AQ  
+44 1666 502 200  
+44 1666 505 107 fax

Representatives:  
**Dorset**  
Bill Allan  
+44 1935 815 271

**East Anglia**  
  
**Bury St. Edmunds**  
21 Churchgate Street  
Bury St Edmunds  
Suffolk IP33 1RG  
+44 1284 716 190  
+44 1284 755 844 fax

**Norfolk**  
The Market Place  
Reepham  
Norfolk NR10 4JJ  
+44 1603 871 443  
+44 1603 872 973 fax

**Midlands**  
  
**Knowle**  
The Old House  
Station Road  
Knowle, Solihull  
West Midlands  
B93 0HT  
+44 1564 776 151  
+44 1564 778 069 fax

**Oxford •**  
Banbury Road  
Shipton on Cherwell  
Kidlington OX5 1JH  
+44 1865 853 640  
+44 1865 372 722 fax

**Yorkshire & North East  
England**

**Leeds**  
30 Park Square West  
Leeds LS1 2PF  
+44 113 234 5755  
+44 113 244 3910 fax

**North West England**

**Chester**  
2 St Johns Court,  
Vicars Lane,  
Chester,  
Ch1 1QE  
+44 1244 313 936  
+44 1244 340 028 fax

**Manchester**  
The Stables  
213 Ashley Road  
Hale WA15 9TB  
+44 161 927 3822  
+44 161 927 3824 fax

**Channel Islands**

**Jersey**  
La Chasse  
La Rue de la Vallee  
St Mary  
Jersey JE3 3DL  
+44 1534 722 441  
+44 1534 759 354 fax

Representative:  
**Guernsey**  
+44 1481 722 448

**Scotland**  
  
**Edinburgh •**  
22 Queen Street  
Edinburgh  
EH2 1JX  
+44 131 225 2266  
+44 131 220 2547 fax

**Glasgow**  
176 St. Vincent Street,  
Glasgow  
G2 5SG  
+44 141 223 8866  
+44 141 223 8868 fax

Representatives:  
**Wine & Spirits**  
Tom Gilbey  
+44 1382 330 256

**Wales**  
  
**Cardiff**  
7-8 Park Place,  
Cardiff CF10 3DP  
+44 2920 727 980  
+44 2920 727 989 fax

EUROPE

**Austria**  
Tuchlauben 8  
1010 Vienna  
+43 (0) 1 403 0001  
vienna@bonhams.com

**Belgium**  
Boulevard  
Saint-Michel 101  
1040 Brussels  
+32 (0) 2 736 5076  
belgium@bonhams.com

**Denmark**  
Henning Thomsen  
+45 4178 4799  
denmark@bonhams.com

**France**  
4 rue de la Paix  
75002 Paris  
+33 (0) 1 42 61 10 10  
paris@bonhams.com

**Germany - Cologne**  
Albertusstrasse 26  
50667 Cologne  
+49 (0) 221 2779 9650  
cologne@bonhams.com

**Germany - Munich**  
Maximilianstrasse 52  
80538 Munich  
+49 (0) 89 2420 5812  
munich@bonhams.com

**Greece**  
7 Neofytou Vamva Street  
Athens 10674  
+30 (0) 210 3636 404  
athens@bonhams.com

**Ireland**  
31 Molesworth Street  
Dublin 2  
+353 (0) 1 602 0990  
dublin@bonhams.com

**Italy - Milan**  
Via Boccaccio 22  
20123 Milano  
+39 0 2 4953 9020  
milan@bonhams.com

**Italy - Rome**  
Via Sicilia 50  
00187 Roma  
+39 0 6 48 5900  
rome@bonhams.com

**The Netherlands**  
De Lairesestraat 154  
1075 HL Amsterdam  
+31 (0) 20 67 09 701  
amsterdam@bonhams.com

**Portugal**  
Rua Bartolomeu Dias nº  
160. 1º  
Belem  
1400-031 Lisbon  
+351 (0) 91 921 4778  
portugal@bonhams.com

**Russia – Moscow**  
Anastasia Vinokurova  
+7 964 562 3845  
russia@bonhams.com

**Russia - St. Petersburg**  
Marina Jacobson  
+7 921 555 2302  
russia@bonhams.com

**Spain - Barcelona**  
Teresa Ybarra  
+34 680 347 606  
barcelona@bonhams.com

**Spain - Madrid**  
Nunez de Balboa no 4-1A  
28001 Madrid  
+34 915 78 17 27  
madrid@bonhams.com

**Spain - Marbella**  
James Roberts  
+34 952 90 62 50  
marbella@bonhams.com

**Switzerland**  
Rue Etienne-Dumont 10  
1204 Geneva  
+41 (0) 22 300 3160  
geneva@bonhams.com

MIDDLE EAST

**Dubai**  
Deborah Najar  
+971 (0)56 113 4146  
deborah.najar@bonhams.com

**Israel**  
Joslyne Halibard  
+972 (0)54 553 5337  
joslyne.halibard@  
bonhams.com

NORTH AMERICA

USA

**San Francisco •**  
220 San Bruno Avenue  
San Francisco  
CA 94103  
+1 (415) 861 7500  
+1 (415) 861 8951 fax

**Los Angeles •**  
7601 W. Sunset Boulevard  
Los Angeles  
CA 90046  
+1 (323) 850 7500  
+1 (323) 850 6090 fax

**New York •**  
580 Madison Avenue  
New York, NY  
10022  
+1 (212) 644 9001  
+1 (212) 644 9007 fax

Representatives:  
**Arizona**  
Terri Adrian-Hardy  
+1 (480) 994 5362

**California**  
**Central Valley**  
David Daniel  
+1 (916) 364 1645

**Southern California**  
Christine Eisenberg  
+1 (949) 646 6560

**Colorado**  
Julie Segraves  
+1 (720) 355 3737

**Florida**  
Palm Beach  
+1 (561) 651 7876  
Miami  
+1 (305) 228 6600  
Ft. Lauderdale  
+1 (954) 566 1630

**Georgia**  
Mary Moore Bethea  
+1 (404) 842 1500

**Illinois**  
Ricki Blumberg Harris  
+1 (312) 475 3922  
+1 (773) 267 3300

**Massachusetts  
Boston/New England**  
Amy Corcoran  
+1 (617) 742 0909

**Nevada**  
David Daniel  
+1 (775) 831 0330

**New Mexico**  
Leslie Trilling  
+1 (505) 820 0701

**Oregon**  
Sheryl Acheson  
+1(503) 312 6023

**Pennsylvania**  
Margaret Tierney  
+1 (610) 644 1199

**Texas**  
Amy Lawch  
+1 (713) 621 5988

**Washington**  
Heather O'Mahony  
+1 (206) 218 5011

**Washington DC  
Mid-Atlantic Region**  
Martin Gammon  
+1 (202) 333 1696

CANADA

**Toronto, Ontario •**  
Jack Kerr-Wilson  
20 Hazelton Avenue  
Toronto, ONT  
M5R 2E2  
+1 (416) 462 9004  
info.ca@bonhams.com

**Montreal, Quebec**  
David Kelsey  
+1 (514) 341 9238  
info.ca@bonhams.com

SOUTH AMERICA

**Argentina**  
Daniel Claramunt  
+54 11 479 37600

**Brazil**  
+55 11 3031 4444  
+55 11 3031 4444 fax

ASIA

**Hong Kong •**  
Suite 2001  
One Pacific Place  
88 Queensway  
Admiralty  
Hong Kong  
+852 2918 4321  
+852 2918 4320 fax  
hongkong@bonhams.com

**Beijing**  
Hongyu Yu  
Suite 511  
Chang An Club  
10 East Chang An Avenue  
Beijing 100006  
+86(0) 10 6528 0922  
+86(0) 10 6528 0933 fax  
beijing@bonhams.com

**Japan**  
Akiko Tsuchida  
Level 14 Hibiya Central  
Building  
1-2-9 Nishi-Shimbashi  
Minato-ku  
Tokyo 105-0003  
+81 (0) 3 5532 8636  
+81 (0) 3 5532 8637 fax  
akiko@bonhams.com

**Singapore**  
Bernadette Rankine  
11th Floor, Wisma Atria  
435 Orchard Road  
Singapore 238877  
+65 (0) 6701 8038  
+65 (0) 6701 8001 fax  
bernadette.rankine@  
bonhams.com

**Taiwan**  
Summer Fang  
37th Floor, Taipei 101 Tower  
Nor 7 Xinyi Road, Section 5  
Taipei, 100  
+886 2 8758 2898  
+886 2 8757 2897 fax  
summer.fang@  
bonhams.com

AUSTRALIA

**Sydney**  
76 Paddington Street  
Paddington NSW 2021  
Australia  
+61 (0) 2 8412 2222  
+61 (0) 2 9475 4110 fax  
info.aus@bonhams.com

**Melbourne**  
Como House  
Como Avenue  
South Yarra  
Melbourne VIC 3141  
+61 (0) 3 8640 4088  
+61 (0) 2 9475 4110 fax  
info.aus@bonhams.com

AFRICA

**Nigeria**  
Neil Coventry  
+234 (0)7065 888 666  
neil.coventry@bonhams.com

**South Africa -  
Johannesburg**  
Penny Culverwell  
+27 (0)71 342 2670  
penny.culverwel@bonhams.com

# Registration and Bidding Form

(Attendee / Absentee / Online / Telephone Bidding)

Please circle your bidding method above.

<input type="checkbox"/>	<input type="checkbox"/>	<input type="checkbox"/>	<input type="checkbox"/>
--------------------------	--------------------------	--------------------------	--------------------------

Paddle number (for office use only)

**This sale will be conducted in accordance with Bonhams' Conditions of Sale and bidding and buying at the Sale will be regulated by these Conditions. You should read the Conditions in conjunction with the Sale Information relating to this Sale which sets out the charges payable by you on the purchases you make and other terms relating to bidding and buying at the Sale. You should ask any questions you have about the Conditions before signing this form. These Conditions also contain certain undertakings by bidders and buyers and limit Bonhams' liability to bidders and buyers.**

## Data protection – use of your information

Where we obtain any personal information about you, we shall only use it in accordance with the terms of our Privacy Policy (subject to any additional specific consent(s) you may have given at the time your information was disclosed). A copy of our Privacy Policy can be found on our website ([www.bonhams.com](http://www.bonhams.com)) or requested by post from Customer Services Department, 101 New Bond Street, London W1S 1SR United Kingdom or by e-mail from [info@bonhams.com](mailto:info@bonhams.com).

## Credit and Debit Card Payments

There is no surcharge for payments made by debit cards issued by a UK bank. All other debit cards and all credit cards are subject to a 2% surcharge on the total invoice price.

## Notice to Bidders.

Clients are requested to provide photographic proof of ID - passport, driving licence, ID card, together with proof of address - utility bill, bank or credit card statement etc. Corporate clients should also provide a copy of their articles of association / company registration documents, together with a letter authorising the individual to bid on the company's behalf. Failure to provide this may result in your bids not being processed. For higher value lots you may also be asked to provide a bank reference.

## If successful

I will collect the purchases myself ☐

Please contact me with a shipping quote (if applicable) ☐

Sale title: Jewellery		Sale date: Tuesday 21 April 2015	
Sale no. 22678		Sale venue: Oxford	
If you are not attending the sale in person, please provide details of the Lots on which you wish to bid at least 24 hours prior to the sale. Bids will be rounded down to the nearest increment. Please refer to the Notice to Bidders in the catalogue for further information relating to Bonhams executing telephone, online or absentee bids on your behalf. Bonhams will endeavour to execute these bids on your behalf but will not be liable for any errors or failing to execute bids.			
<b>General Bid Increments:</b>			
£10 - 200 .....by 10s		£10,000 - 20,000 .....by 1,000s	
£200 - 500 .....by 20 / 50 / 80s		£20,000 - 50,000 .....by 2,000 / 5,000 / 8,000s	
£500 - 1,000 .....by 50s		£50,000 - 100,000 .....by 5,000s	
£1,000 - 2,000 .....by 100s		£100,000 - 200,000 .....by 10,000s	
£2,000 - 5,000 .....by 200 / 500 / 800s		above £200,000 .....at the auctioneer's discretion	
£5,000 - 10,000 .....by 500s			
The auctioneer has discretion to split any bid at any time.			
Customer Number		Title	
First Name		Last Name	
Company name (to be invoiced if applicable)			
Address			
City		County / State	
Post / Zip code		Country	
Telephone mobile		Telephone daytime	
Telephone evening		Fax	
Preferred number(s) in order for Telephone Bidding (inc. country code)			
E-mail (in capitals)			
By providing your email address above, you authorise Bonhams to send you marketing material and news concerning Bonhams and partner organisations. Bonhams does not sell or trade email addresses.			
I am registering to bid as a private client <input type="checkbox"/>		I am registering to bid as a trade client <input type="checkbox"/>	
If registered for VAT in the EU please enter your registration here: □□ / □□□ - □□□□ - □□		Please tick if you have registered with us before <input type="checkbox"/>	

Please note that all telephone calls are recorded.

Telephone or Absentee (T / A)	Lot no.	Brief description	MAX bid in GBP (excluding premium & VAT)	Covering bid*

FOR WINE SALES ONLY		
Please leave lots "available under bond" in bond <input type="checkbox"/>	I will collect from Park Royal or bonded warehouse <input type="checkbox"/>	Please include delivery charges (minimum charge of £20 + VAT) <input type="checkbox"/>

BY SIGNING THIS FORM YOU AGREE THAT YOU HAVE READ AND UNDERSTAND OUR CONDITIONS OF SALE AND WISH TO BE BOUND BY THEM, AND AGREE TO PAY THE BUYER'S PREMIUM AND ANY OTHER CHARGES MENTIONED IN THE NOTICE TO BIDDERS. THIS AFFECTS YOUR LEGAL RIGHTS.	
Your signature:	Date:

\* Covering Bid: A maximum bid (exclusive of Buyers Premium and VAT) to be executed by Bonhams only if we are unable to contact you by telephone, or should the connection be lost during bidding.

**NB. Payment will only be accepted from an account in the same name as shown on the invoice and Auction Registration form.**

**Please email or fax the completed Auction Registration form and requested information to:**

Bonhams, Customer Services, 101 New Bond Street, London, W1S 1SR. Tel: +44 (0) 20 7447 7447 Fax: +44 (0) 20 7447 7401, [bids@bonhams.com](mailto:bids@bonhams.com)

Bonhams 1793 Limited. Montpelier Street, London SW7 1HH. Incorporated in England. Company Number 4326560.

UK/05/14



**Bonhams**

Banbury Road  
Shipton on Cherwell  
Kidlington  
Oxford OX5 1JH

+44 (0) 1865 853 640  
+44 (0) 1865 372 722 (fax)



— Christmas, 1924. —

To the Keeper of my Heart. —

— a token of affection in joint celebration of two events

**BISHOPSGATE & CHRISTMAS**

— with love and gratitude for another year's happy comp

*Herbert*