

Jewellery

Tuesday 5 February 2013 at 11am
Oxford





211

212 (part)

Jewellery

Tuesday 5 February 2013 at 11am
Oxford

Bonhams

Banbury Road
Shipton-on-Cherwell
Kidlington
Oxford
OX5 1JH
www.bonhams.com

Viewing

Saturday 2 February 9am to 12noon
Monday 4 February 9am to 4.30pm
Tuesday 5 February 9am to 11am

Bids

+44 (0) 20 7447 7448
+44 (0) 20 7447 7401 fax
To bid via the internet
please visit www.bonhams.com

Please provide details of the lots
on which you wish to place bids
at least 24 hours prior to the sale.

New bidders must also
provide proof of identity
when submitting bids. Failure
to do this may result in your
bids not being processed.

Live online bidding is available for this sale

Please email bids@bonhams.com
with "Live bidding" in the subject
line 48 hours before the auction
to register for this service

Bonhams 1793 Limited
Registered No. 4326560
Registered Office: Montpelier Galleries
Montpelier Street,
London SW7 1HH
+44 (0) 20 7393 3900
+44 (0) 20 7393 3905 fax

Jewellery Enquiries

Frances Noble FGA DGA
frances.noble@bonhams.com
+44 (0) 1865 853 653

Tessa Parry FGA DGA
tessa.parry@bonhams.com
+44 (0) 1865 853 655

Louise Dennis FGA DGA
louise.dennis@bonhams.com
+44 (0) 1865 853 654

Administrator
Isabella Mendes Cert GA
isabella.mendes@bonhams.com
+44 (0) 1865 853 652

Photography Enquiries
Hannah Ibison Cert GA
hannah.ibison@bonhams.com
+44 (0) 1865 853 663

Sale Number: 20675

Catalogue: £8 (£9 by post)

Bonhams 1793 Ltd Directors
Robert Brooks Chairman, Colin Sheaf Deputy Chairman,
Malcolm Barber Group Managing Director,
Matthew Girling CEO UK and Europe,
Geoffrey Davies, Jonathan Horwich, James Knight,
Patrick Meade, Caroline Oliphant, Hugh Watchorn.

Customer Services

Monday to Friday 8.30am to 6pm
+44 (0) 20 7447 7447

Please see back of catalogue
for important notice to bidders

Illustrations

Front cover: lot 233
Back cover: lot 245
Inside front cover: lots 211 & 212 (part)
Inside back cover: lot 213

Please note that as a result
of recent legislation ruby and
jadeite gemstones of Burmese
(Myanmar) origin may not be
imported into the US. Rubies
and jadeite of non-Burmese
origin require certification
before import into the US.
Items affected are marked
with a symbol ≈

Important Notice Regarding Importation Into The United States of Rolex Watches.

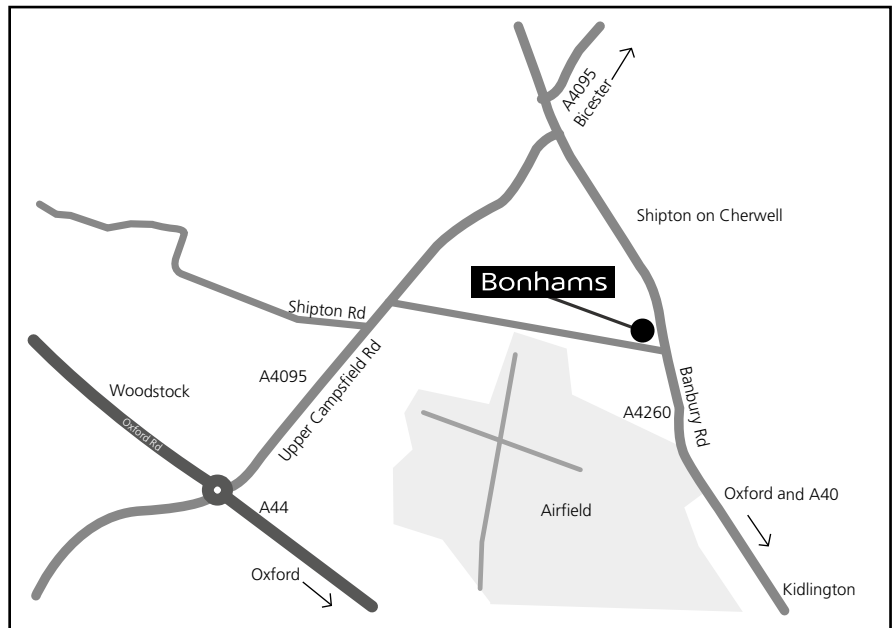
Bonhams cannot arrange for
the delivery of Rolex watches
into The United States. The
buyer or designated agent
may collect the property in
the country of sale.



Bonhams UK Ltd Directors
Colin Sheaf Chairman, Jonathan Baddeley, Antony Bennett,
Matthew Bradbury, Harvey Cammell, Simon Cottle,
Andrew Currie, David Dallas, Paul Davidson, Jean Ghika,
Charles Graham-Campbell, Miranda Grant, Robin Hereford,
Asaph Hyman, Charles Lanning, Camilla Lombardi,
Fergus Lyons, Paul Maudsley, Gordon McFarlan,
Andrew McKenzie, Simon Mitchell, Jeff Muse, Mike Neill,
Charlie O'Brien, Giles Peppiatt, Peter Rees, Julian Roup,

Iain Rushbrook, John Sandon, Tim Schofield,
Veronique Scorer, James Stratton, Roger Tappin,
Shahin Virani, David Williams, Michael Wynell-Mayow.

Sale Information



By Rail: Oxford train station

Saleroom

Banbury Road,
Shipton on Cherwell,
Kidlington
Oxford
OX5 1JH

+44 (0) 1865 853 640
+44 (0) 1865 372 722 fax

Condition Reports

We highly recommend that potential buyers make efforts to inspect the lots in Oxford in person, during our public viewing. We expect that there may be a large number of condition enquiries, and the effect will be that clients submitting long and elaborate requests are likely to be dealt with after those with short and specific requests.

By Road

From London:
Exit the M40 at junction 9. Take the A34 to Oxford and then the A44 to Woodstock. At Woodstock roundabout take the 3rd exit towards Bicester (A4095). Take the first right and Bonhams is at the far end on the left.

From the A40 West:
Take the A40 towards Oxford. Take the first left at the Eynsham roundabout. Drive through Church Hanborough and then turn right on to the A4095. Drive through Bladon and straight over the Woodstock roundabout. Take the first right and Bonhams is at the far end on the left.

Shipping Information

Unless you wish to use your own shipping company, please contact any of the below:

Isabella Mendes via email at: isabella.mendes@bonhams.com

Or

Mail Boxes Etc.
266 Banbury Road,
Oxford OX2 7DL
+44 (0)1865 514 655
info@mbesummertown.co.uk

Or

Pack & Send
3 Botley Road, Oxford OX2 0AA
+44 (0)1865 260 610
oxford@packsend.co.uk

You can also contact shipping@bonhams.com with any difficulties or questions arising from the above or for any CITES requirements.

Jewellery



1

An 18ct gold woven-link necklace

Clasp hallmarked, *length 43cm, weight 27gm.*

£500 - 700

2

A single stone diamond necklace

The brilliant-cut diamond in a two colour polished collet setting, to a yellow precious metal brick-link necklace, the clasp stamped '750', *length 45cm, gross weight approximately 44gm.*

£1,000 - 1,200

3

A diamond dress ring

The yellow precious metal crossover shoulders with claw set brilliant-cut diamonds between, the shank stamped '18ct', *ring size Q.*

£500 - 700

4

Two 9ct gold chains and a sovereign pendant

Comprising a flattened anchor-link chain, with further chain section linked to form a flexible ring, a 9ct gold flattened belcher-link chain and a sovereign, loose mounted in pendant setting, *total weight 40.6gm.* (3)

£500 - 700

5

A 9ct gold curb-link necklace

Of large and small solid flattened links, *length 51.5cm, weight 57.75gm.*

£500 - 700

6

Quadri: An 18ct gold collar necklace

Of stylized S-shaped hollow links, the clasp hallmarked and bearing maker's mark 'Quadri', *length 46cm, weight 60gm.*

£1,000 - 1,500

7

A 9ct gold wide brick-link bracelet

Of polished and textured design, hallmarked for London 1965, *length 18.5cm, weight approximately 48.4gm.*

£500 - 700

8

A fancy-link bracelet

Of pierced beaded design with integral clasp, stamped 'HN', with French eagle's head control mark, *length approximately 17cm.*

£250 - 350

9

A diamond three stone ring

The brilliant-cut diamonds in claw settings, 18ct gold mounted, *ring size L.*

£500 - 700

10

A diamond five stone ring

The uniform brilliant-cut diamonds in a bar setting, to a bi-colour precious metal mount stamped '750', *total diamond weight approximately 0.70ct, ring size N.*

£500 - 600

11

An 18ct gold diamond five stone ring

The graduated princess-cut diamonds in four claw settings, the shank stamped '1.27', *ring size N½.*

£600 - 800

12

A two stone diamond ring and a three stone diamond ring

The first ring claw set with three old-cut diamonds, to yellow precious metal shank stamped '18ct plat', the second ring similarly set, between polished white precious metal shoulders, *first ring size O.* (2)

£700 - 900

13≈

A gem set and polychrome enamel bug brooch

The bug with ruby eyes and diamond set thorax, to polychrome enamelled wings and cultured pearl abdomen, stamped '750', *length 3.2cm.*

£300 - 400

14

An Austro-Hungarian 4 Ducat coin set pendant

The coin in loose pendant setting, on a ropetwist-link chain, *total gross weight 26gm.*

£500 - 550

15

Cartier: A 'Trinity' ring

Designed as three entwined bands of yellow, white and rose precious metal, stamped '750', *ring size K.*

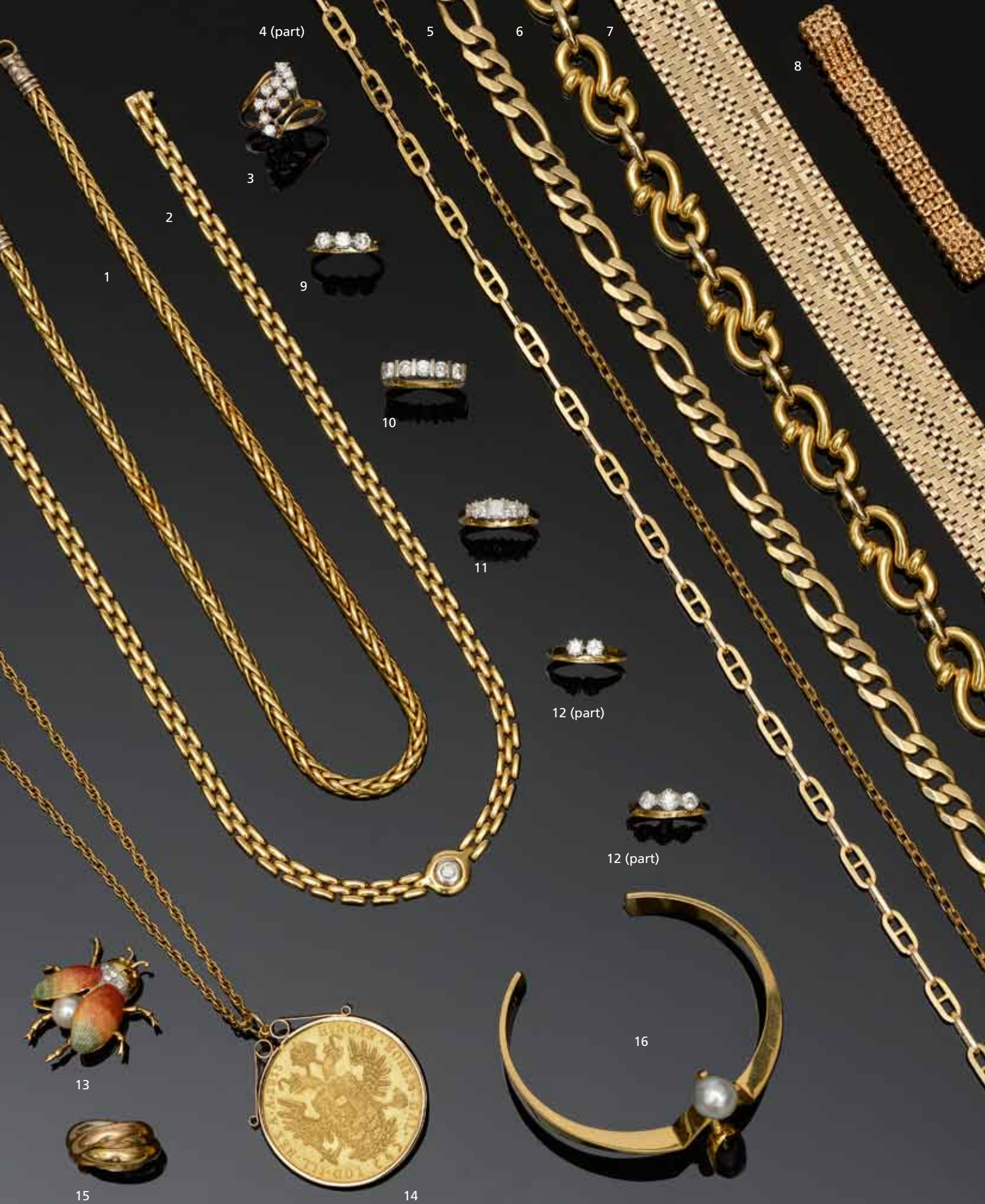
£300 - 500

16

Demaret: A cultured pearl and amethyst bangle

The tapering polished bangle set to the front with a baroque pearl and an oval cabochon amethyst in closed-back setting, with indistinct maker's mark, in signed case, *inner diameter 6.3cm.*

£700 - 900





32 (part)

17≈

A diamond and vari gem-set bar brooch

Centred with a cabochon opal and old-cut diamond cluster, between circular-cut sapphire, ruby, emerald and old-cut diamond accents, white precious metal mounted, *length 5.9cm.*

£500 - 700

18

An emerald and diamond full hoop eternity ring and a diamond full hoop eternity ring

The first millegrain set with alternate lines of step-cut emeralds and single-cut diamonds, the second set throughout with old and single-cut diamonds, both white precious metal mounted, *rings size O. (2)*

£600 - 800

19≈

Two vari gem-set brooches and two full hoop eternity rings

Comprising a ruby, diamond and seed pearl double heart brooch, the heart motif centred with an oval-cut ruby and old-cut diamond, with ropetwist knot surmount and bordered by seed pearls, together with a garnet set dragonfly brooch, a diamond full hoop eternity ring, set with single and old-cut diamonds, and a ruby example, set with calibr -cut rubies, *first brooch diameter 2.5cm. (4)*

£600 - 800

20≈

A ruby and diamond cluster ring

The oval mixed-cut ruby bordered by single-cut diamonds, two colour precious metal mounted, *ring size T.*

£500 - 600

21

A red spinel and seed pearl pendant

Of openwork foliate cartouche design, set with graduated oval mixed-cut red spinels, with channels of seed pearls between, on a fine-link chain, *length 3.9cm.*

£500 - 600

22

A spinel and diamond three stone ring

The oval mixed-cut red spinel claw set between old-cut diamonds, white precious metal mounted, (indistinct hallmarks), *total diamond weight 0.80ct, ring size O.*

£600 - 800

23≈

A ruby and diamond cluster ring

Set to the centre with an oval-cut ruby within a brilliant-cut diamond surround, between trifurcated shoulders, to a tapered 18ct gold band, *total diamond weight approximately 0.80ct, ring size J.*

£700 - 900

24≈

A ruby and diamond bow brooch

Of openwork ribbon bow design, alternately set with cushion and pear-shaped rubies and old-cut diamonds, two colour precious metal mounted, *length 4.2cm.*

£600 - 800

25≈

A ruby, half pearl and diamond dress ring

The pierced scrolling mount terminating in an oval-cut ruby and a half pearl, set throughout with old-cut diamonds, (pearl untested), *ring size I.*

£600 - 800

26≈

A ruby and diamond bar brooch

Alternately set with graduated oval-cut rubies and quatrefoil clusters of old and rose-cut diamonds, bordered by an openwork frame of similarly cut diamonds, *length 4cm.*

£400 - 500

27≈

A ruby and diamond dress ring

The old brilliant-cut diamond within a square surround of calibr -cut rubies and a further surround of rose-cut diamonds, accented by single-cut diamonds, *principal diamond weight approximately 0.45ct, ring size K.*

£500 - 700

28≈

A ruby and diamond crescent brooch, circa 1890

The row of cushion-shaped, rose and old brilliant-cut diamonds to an oval and circular-cut ruby border, mounted in silver and gold, (one diamond deficient), *total diamond weight approximately 0.55ct, length 2.9cm.*

£800 - 1,200

29≈

A ruby and diamond panel ring

The vertical row of old brilliant-cut diamonds flanked by two parallel rows of rubies, *panel width 1.4cm, ring size O.*

£500 - 700

30

A diamond heart brooch

The openwork heart with scroll pierced terminal, set with graduated rose-cut diamonds in closed foil-backed settings, *length 3.2cm.*

£700 - 900

31≈

A ruby and diamond flower brooch

Modelled as a flower in bloom, the stamen set with a circular cabochon ruby within a collet set brilliant-cut diamond border, the petals and leaves set throughout with single and rose-cut diamonds, (one diamond deficient), maker's mark 'LB', *brilliant and single-cut diamond weight approximately 0.55ct, length 4cm.*

£400 - 600

32

A small collection of jewellery

Comprising a 9ct gold fancy gate-link bracelet with pierced quatrefoil detail, together with a pair of 15ct gold polished cufflinks, and a novelty brooch depicting a panther suspending a baculum, *bracelet length 18.5cm. (3)*

£400 - 600



17



18



19 (part)



19 (part)



20



21



22



23



24



25



26



27



28



31



29



30



19 (part)

33

An amethyst and diamond pendant and earpendants suite

Each designed with a baton-link surmount set with brilliant-cut diamonds, suspending a briolette-cut amethyst drop below, the pendant on a fine snake-link chain stamped '750', *pendant length 3.3cm, earpendants length 4.5cm.* (2)

£500 - 600

34

Tiffany & Co: Two pairs of diamond earrings

The first polished spherical studs spaced with rubover set brilliant-cut diamonds, the second composed of collet set brilliant-cut diamond surmounts, suspending polished drops below. (2)

£500 - 700

35

Kutchinsky: A diamond set heart pendant

Designed as two graduated hearts, each set with princess and fancy-cut diamonds, signed and stamped '750', *diamond weight approximately 0.80ct, length 1.7cm.*

£500 - 700

36

A hunting ring

Cast with the figure of a huntsman and a wild boar, the shank formed by two hounds chasing the boar, unmarked, *ring size I.*

£200 - 300

37

A diamond set ring

Of undulating and textured design, set throughout with brilliant-cut diamonds, *total diamond weight approximately 0.30ct, ring size M.*

£300 - 400

38

A diamond five stone ring

Claw set with graduated old brilliant-cut diamonds, *total diamond weight approximately 1.40ct, ring size O.*

£1,000 - 1,500

39

A sapphire and diamond ring

The oval-cut sapphire between courses of brilliant-cut diamonds, to bifurcated shoulders, *ring size Q½.*

£700 - 900

40

An amethyst and diamond panel ring

The rectangular mixed-cut amethyst within an angular frame accented with single-cut diamonds, white precious metal mounted, *ring size N½.*

£600 - 800

41

Georg Jensen: A Danish 18ct gold heart-shaped pendant, designed by Regitze Overgaard

The polished heart design incorporating entwined loop detail, stamped numbers to reverse '2001', with designer's punched stamp and marked '750', on curb-link chain, maker's stamp and marked '750', *length of pendant 18mm, total weight 11.6gm.*

£400 - 600

42

A diamond single stone ring

The pierced square setting centred with a brilliant-cut diamond, between scroll engraved shoulders, *total diamond weight approximately 0.60ct, ring size O½.*

£400 - 500

43

A diamond cluster ring

The raised brilliant-cut diamond within a similarly-cut diamond surround, mounted in 18ct yellow gold, *total diamond weight approximately 0.70ct, ring size N.*

£800 - 1,200

44

A diamond single stone ring

Collet set with an old brilliant-cut diamond, 18ct gold mounted, *diamond weight approximately 1.05ct, ring size K.*

£800 - 1,200

45

A diamond set pendant necklace

The shield-shaped pendant pavé-set with brilliant-cut diamonds, between polished borders, to a triple rope-link chain, *total diamond weight approximately 0.75ct, pendant signed 'C Natasha', pendant length 2cm, chain length 41cm.*

£600 - 800

46

Tiffany & Co: A bracelet

Of polished star-shaped links, stamped 'T&Co, 750', *length 19cm, weight 19gm.*

£500 - 700

47

A small collection of jewellery

Comprising a curb-link bracelet centred with a diamond set geometric panel of two interlocking lozenge links, stamped '18ct', a diamond set crossover dress ring, stamped '750', an 18ct white gold blue zircon dress ring, an 18ct gold five stone diamond ring, and a diamond and black stone dress ring, *first ring size K½.* (5)

£600 - 800

48≈

A ruby and diamond crossover bangle

The step-cut ruby set arms with a row of brilliant-cut diamonds between, stamped '14k', *width approximately 6cm.*

£500 - 600

49

A collection of 9ct gold jewellery

Comprising a plain polished D-section hinged bangle, a polished brick-link chain bracelet and a cornelian inset signet ring, *bangle inner diameter 6cm, bracelet length 23cm, ring size P.* (3)

£1,000 - 1,500



50

A cultured pearl and diamond pendant necklace

The cultured pearl of grey tint, approximately 11.9cm in diameter, suspended from a brilliant-cut diamond surmount, to a trace-link chain, *diamond weight approximately 0.45ct, (pearl untested), pendant length 2.9cm, chain length 47.1cm.*

£700 - 900

51

A cultured pearl and diamond pendant, ring and earrings suite

The pendant with black cultured pearl drop surmounted by a princess-cut diamond set square bale, on a fine trace-link chain, the ring and earrings similarly set with a black cultured pearl and channels of princess-cut diamonds, 18ct white gold mounted, *pendant length 1.6cm, ring size L. (3)*

£500 - 600

52

A diamond pendant and earstuds ensuite

Each pierced pear-shaped panel set with a brilliant-cut diamond, the pendant on a fine trace-link chain, 18ct white gold mounted, *pendant length 1cm, chain length 20cm. (2)*

£1,000 - 1,200

53

A diamond single stone pendant necklace

The polished collet pendant mount set with a round brilliant-cut diamond, on a fine curb and bead-link chain, 18ct white gold mounted, *total diamond weight approximately 0.50ct, chain length 43cm.*

£700 - 900

54

A pair of diamond single stone earpendants and a pendant

Each with brilliant-cut diamonds in white precious metal four claw settings, the pendant on a fine belcher-link chain. (2)

£600 - 800

55

Three diamond rings

Comprising a band ring of brick-link chain design, set with brilliant-cut diamonds, white gold mount stamped '750', a band ring spaced with rubover set brilliant-cut diamonds, stamped '18k', and a seven stone ring claw set with marquise-cut diamonds, *first ring size G, second L. (3)*

£800 - 1,200

55a

A diamond single stone pendant

The brilliant-cut diamond in a four claw setting, bi-colour precious metal mounted, *diamond weight approximately 0.65ct, length 1cm.*

£500 - 600

56

A diamond single stone ring and three further diamond rings

The first ring with an old brilliant-cut diamond to single-cut diamond accented shoulders, the shank stamped 'plat 18ct', together with a five stone diamond ring, a three stone diamond ring, and a diamond accented crossover ring, *first ring size Q. (4)*

£600 - 800

57

Cartier: An 18ct gold and hematite torque bangle

The yellow gold bangle with hematite terminals, each carved to depict a panther, numbered '303757', with 18ct gold convention mark, *inner diameter 5.8cm.*

£600 - 800

58

Two diamond set necklaces

The first with a shaped diamond set panel with oval cabochon star sapphires, to a ropetwist chain, the clasp stamped '750', together with a white precious metal diamond set panel necklace, *necklace lengths 44cm and 41cm respectively. (2)*

£600 - 800



50



51 (part)



52



53



54



51 (part)



55 (part)



55 (part)



55A



56 (part)



55 (part)



56 (part)



56 (part)



56 (part)



57



58 (part)



No Lot



No Lot



58 (part)

59

A pair of diamond cluster earpendants

Each cluster millegrain set throughout with old-cut diamonds, beneath a single stone surmount, on hinged fittings, *length 2.4cm*.

£500 - 700

60

A diamond heart pendant on chain

The openwork heart-shaped pendant set with brilliant-cut diamonds, suspended on a multi-strand trace-link chain, white precious metal mounted, stamped '750', *pendant length 1.4cm, chain length 42cm*.

£600 - 800

61

A diamond pendant necklace

Designed as a trio of intertwined hoops set with brilliant-cut diamonds, with collet set diamond channels between, suspending a similarly set tassle pendant below, on a fancy flat-link back chain, later extended, stamped '18k', *length 48cm*.

£800 - 1,000

62

A sapphire and diamond floral brooch/pendant

The openwork plaque set to the centre with an oval-cut sapphire, within a surround of cushion-shaped and single-cut diamonds, to further rows of circular-cut sapphires and single and rose-cut diamonds, on a later 18ct white gold venetian-link chain, *total diamond weight approximately 0.30ct, pendant length 3.5cm, chain length 45.5cm*.

£600 - 800

63

A diamond full hoop eternity ring

Designed as a continuous row of brilliant-cut diamonds, to a scrolling gallery, *total diamond weight approximately 0.80ct, ring size Q*.

£300 - 400

64

A sapphire and diamond full hoop eternity ring

Alternately set with trios of calibre-cut sapphires and brilliant-cut diamonds, the yellow precious metal mount stamped '750', *ring size Q½*.

£400 - 600

65

An early 20th century sapphire and diamond ring

The oval sapphire in a four claw setting, the shoulders set with brilliant and single-cut diamonds, *sapphire length 1.4cm, ring size O½*.

£1,000 - 1,500

66

A diamond two stone ring

Of crossover design, claw set with brilliant-cut diamonds, 18ct white gold mounted, *total diamond weight approximately 1.20ct, ring size N*.

£600 - 800

67

A sapphire and diamond brooch

Of pierced lattice design with stylised foliate panels, collet set with a square cut-cornered sapphire to borders of old-cut diamonds, later brooch fitting, *length 4.9cm*.

£500 - 700

68

A diamond bow brooch

The silver and gold setting highlighted with old-cut diamonds, *width 3.4cm*.

£600 - 800

69

An early 20th century diamond bow brooch

Pavé set throughout with brilliant-cut diamonds, with baguette-cut diamonds to the central knot, *length 4cm*.

£700 - 800

70

A diamond star brooch

The double star brooch set with old-cut diamonds, *width 4.2cm*.

£600 - 800

71

A diamond buckle brooch

The pierced and millegrained buckle set throughout with old and rose-cut diamonds, white precious metal mounted, *length 2.2cm*.

£500 - 600

72

A diamond cluster brooch

The foliate openwork panel centred with an old brilliant-cut diamond, to a surround of similarly-cut diamonds in closed foil-backed settings, *principal diamond weight approximately 0.50ct, diameter 3cm*.

£500 - 600



59



No Lot



63



64



60



61



62



68



65



66



69



70



71



72



67



81 (part)

73

An oval paste portrait pendant and a collection of peridot jewellery

The large oval glazed panel depicting the portrait of a young child in white chemise, bordered by circular white pastes in closed foil-backed settings, glazed verso, below a similarly set ribbon bow surmount, in fitted case, together with a peridot and seed pearl brooch, of octagonal cluster design, a bar brooch example, and a pair of peridot and seed pearl earpendants, *first pendant length 8cm*. (4)

£500 - 600

74

A collection of jewellery

Comprising a woven mesh coin purse, stamped '14k', together with a purple foil-backed quartz and seed pearl cluster brooch, a 14ct gold gem set abstract brooch, an amethyst and seed pearl brooch, a novelty monkey charm, and five further brooches. (10)

£600 - 800

75

An amethyst and half pearl brooch and a seed pearl brooch

The first of oval cluster design, collet set with an oval mixed-cut amethyst within a border of half pearls, the second designed as a trio of three-leaf clovers, each highlighted with graduated seed pearls, *brooch lengths 3.2cm and 4.3cm respectively*. (2)

£600 - 800

76

A collection of antique and later jewellery

Comprising an oval amethyst and half pearl cluster brooch, with later brooch fitting, (pearls untested), a pair of rose-cut diamond and foil-backed paste earpendants, with later screw-back fittings, two cabochon-cut moonstone bar brooches, an Art Nouveau style moonstone pendant, of stylised foliate design, a scarab stick pin, an amethyst and seed pearl bar brooch, two Naval crown bar brooches, and other items, contained in a green leatherette jewellery case, *first brooch length 2.6cm*.

£500 - 700

77

A collection of jewellery

To include a gold belcher-link necklace and two bracelets dating from the first half of the 19th century, the fine links with pressed chevron design and turquoise accented clasps, together with a matching brooch, an amethyst and half pearl cluster brooch, a garnet and half pearl ring, a pair of 15ct gold cufflinks, a seed pearl and sapphire pendant stamped '15ct', a curb-link bracelet, etc. (18)

£500 - 600

78

A late Victorian sapphire and diamond hinged bangle

The central round-cut sapphire and old brilliant-cut diamond cluster between graduated old brilliant-cut diamond shoulders, mounted in gold and silver, *internal diameter 5.7cm*.

£800 - 1,200

79

A peridot and diamond bangle

The tapered panel set with graduated circular-cut peridots, spaced by old-cut diamond points, to a hinged yellow precious metal bangle, *inner diameter 5.8cm*.

£600 - 800

80

A diamond set hinged bangle

The trifurcated bangle applied to the top with a channel of graduated flowerheads, each centred with a rose-cut diamond, between similarly cut diamond set borders, *inner diameter 5.6cm*.

£400 - 500

81

A peridot and seed pearl pendant, a seed pearl bar brooch, and a sapphire ring

The oval-cut peridot suspending pierced triangular bars with seed pearl accents and a pear-shaped peridot terminal, stamped '15ct', the bar brooch in the form of a hunting crop with a seed pearl set heart, together with a sapphire set dress ring stamped '14k'. (3)

£500 - 700



73 (part)



73 (part)



75 (part)



76 (part)



76 (part)



75 (part)



74 (part)



74 (part)



78



74 (part)



77 (part)



79



77 (part)

80



77 (part)



77 (part)



82

Lalaounis: A pair of earclips

Each modelled as two circlets of braided rope design, linked by a shield-shaped plaque with applied beading and rosette detail, with maker's mark and French assay marks, numbered, in signed case, *length 3.9cm*.

£700 - 900

83Y

A coral and diamond dress ring

Of bombé design, centrally-set with an oval cabochon coral *corallium rubrum*, to a pierced bi-coloured gallery and shoulders, highlighted with single-cut diamonds in collet setting, *total diamond weight approximately 0.30ct, ring size J (leading edge)*.

£500 - 700

84

Lalaounis: A pair of pendent earrings

Each elongated triangular plaque of geometric and textured design, polished to the reverse, with maker's mark, numbered, *length 7.7cm*

£500 - 700

85

A diamond set brooch and earclips suite

Each of two colour textured foliate design, highlighted with channels of graduated single-cut diamonds, stamped '18k', *brooch length 4.9cm, earclips length 3cm. (2)*

£600 - 800

86

Tiffany & Co: A pair of diamond set earclips

Each shaped oval earclip of pierced and reeded design, claw set with brilliant-cut diamonds in scatter formation, stamped '750', in signed case, *length 2.6cm*.

£700 - 900

87

A diamond set brooch and earstuds suite

Each of stylised foliate spray design, set with millegrained chanel of single-cut diamonds, accented with Swiss-cut diamonds in scatter formation, bi-colour precious metal mounted, *brooch length 6.5cm. (2)*

£500 - 700

88

Lalaounis: A ring

The stylised buckle of hammered and textured design, with maker's mark, numbered, in signed pouch, *ring size L (leading edge)*.

£500 - 700

89

A diamond dress ring

Of Odeonesque design, obliquely claw set with an old-cut diamond and a channel of smaller similarly cut stones, two colour precious metal mounted, *ring size P*.

£500 - 700

90

A crocodile brooch

Of textured naturalistic design, yellow precious metal mounted, stamped '18c', *length 3.8cm*.

£200 - 300

91

Lalaounis: A dolphin pendant/brooch

The textured circular plaque depicting a man riding a dolphin within a granulated and scrolling border, with maker's mark, numbered, *length 7.5cm*.

£600 - 800

92

A pair of aquamarine and diamond earclips

The emerald-cut aquamarines within foliate surrounds, surmounted by single-cut diamond set ribbon bows, *length approximately 3cm*.

£400 - 500

93

Garrard: An 18ct gold and tiger's eye pendant

The textured flowerhead panel inlaid with oval cabochon tiger's eye in collet settings, signed, with import marks for 1972, *length 7.4cm*.

£800 - 1,200

94

A sapphire and diamond bracelet

Set to the front with three graduating oval-cut sapphires, interspersed with brilliant-cut diamonds, to a brick-link chain, *total diamond weight approximately 1.55ct, maker's mark, length 18.5cm*.

£1,000 - 1,500

95

A sapphire and diamond dress ring

The three graduated oval cabochon sapphires within a surround of circular-cut sapphires and square collet set single-cut diamonds, *total diamond weight approximately 0.30ct, ring size L*.

£1,000 - 1,500

96

A sapphire and diamond dress ring

The triple row ring set with cabochon sapphires interspaced with diamond accents, the shank stamped '750', *ring size N*.

£300 - 400



82



86



83



85



84



87



88



90



89



91



92



93



94



95



96



97

H Stern: Two gem set rings

The first set with two barrel-shaped tourmalines, of pink and green hues, between diamond set vertical bar shoulders, to a split reeded shank, stamped maker's mark to exterior, the second collet set with two green tourmalines, of stepped design, with deer's head mark, both stamped '800', *first ring size L½. (2)*

£500 - 700

98≈

A jade and diamond brooch/pendant

The circular jade panel centred with a cluster of brilliant and single-cut diamonds, below a textured abstract surmount set with similarly cut diamonds, on a bifurcated bar mount, white precious metal mounted, (jade untested for treatments or enhancements), *length 6.5cm.*

£500 - 700

99

Theo Fennell: An emerald cross pendant

Collet set throughout with square step-cut emeralds, mounted in 18ct yellow gold, to a snake-link chain stamped '750', maker's mark TF, in signed case, *pendant length 1.6cm, chain length 39cm.*

£500 - 700

100≈

A multi gem set heart-shaped pendant and chain

The pendant pavé set with brilliant-cut diamonds with raised sapphire, ruby and emerald flowerhead clusters, the bale stamped '750' and 'Ozyer', on a flattened curb-link necklace with two colour clasp stamped '750', *pendant width 3.6cm, necklace length 54.5cm, total gross weight approximately 77.5gm.*

£1,500 - 2,000

101≈

A jade spray brooch

Of stylised floral and foliate design, the faceted white precious metal mount set with circular and pear-shaped cabochon jade, (jade untested for treatments or enhancements), *length 5.3cm.*

£800 - 1,200

102

An opal and diamond pendant necklace

The oval cabochon opal in closed-back setting, within a brilliant-cut diamond surround, mounted in 18ct yellow gold, maker's mark 'PKH', to a flattened curb link chain, *total diamond weight approximately 1.10ct, pendant length 4.2cm, chain length 46cm.*

£1,000 - 1,500

103

An opal and diamond three stone ring

The central oval cabochon opal collet set between two old-cut diamonds, shank stamped '18ct', *ring size O.*

£300 - 400

104

An emerald and diamond target cluster ring

The central brilliant-cut diamond within a surround of circular-cut emeralds and diamonds, *ring size U.*

£400 - 500

105≈

A jadeite single stone ring

The shaped rectangular cabochon jadeite claw set within a fluted setting, between trifurcated shoulders, the yellow precious metal mount stamped '18k', (jadeite untested for treatments), *ring size N.*

£500 - 700

106

An emerald and diamond cluster ring

The reeded yellow precious metal crossover mount with ropetwist borders, centred with a circular cabochon emerald and rose-cut diamond cluster, *ring size O.*

£400 - 600

107

An emerald and diamond cluster ring

The collet set oval mixed-cut emerald within a brilliant-cut diamond border, between fleur-de-lys shoulders, *total diamond weight approximately 0.70ct, ring size I.*

£500 - 700

108

An emerald and diamond dress ring

Of abstract cluster design, claw set with oval mixed-cut emeralds in scatter formation, with channels of single-cut diamonds between, to a trifurcated hoop, *ring size J½.*

£600 - 800

109

Lalaounis: An emerald ring and bracelet suite

The two opposing pyramids of textured design, centrally set with a circular-cut emerald, accompanied by a bracelet ensuite, numbered *ring size N, bracelet length 18.8cm. (2)*

£500 - 700

110

An emerald and diamond bracelet

The alternating circular-cut emeralds and brilliant-cut diamonds in white precious metal four claw settings, to a yellow precious metal polished brick-link bracelet, stamped '750', *length approximately 18.5cm.*

£700 - 900

97



98



99



100



101



102



105



103



104



106



107



108



109 (part)

110

109 (part)



111≈

A collection of jewellery

Comprising a lapis lazuli necklace composed of shaped cuboid beads, (lapis lazuli untested for treatments), with spacer beads, clasp stamped '585', an azurite bead necklace, a silver coloured freshwater cultured pearl single row necklace, clasp stamped '585', a pair of silver coloured single freshwater cultured pearl earpendants, an abstract diamond set brooch, white precious metal, stamped '750', claw set with brilliants, a ruby and diamond cluster ring, a diamond half hoop ring, and a Japanese pendant on ropetwist chain stamped '585', *first necklace length 50cm.*

£500 - 700

112

A collection of lapis lazuli jewellery

Comprising two signet rings, each inlaid with a rectangular lapis lazuli panel, a pair of earclips and pendant ensuite, and a brooch, of abstract design, set with square and rectangular lapis lazuli panels in scatter formation, all stamped '750', (lapis lazuli untested for treatments), *ring sizes M½ and O. (5)*

£600 - 800

113

A suite of zircon, diamond and cultured pearl jewellery

Comprising a dress ring, earclips and necklace, the dress ring and earclips each centred with a circular-cut blue zircon, within a pierced domed surround of geometric and scrolling design, accented with old and single-cut diamonds, the necklace composed of two strands of graduated cultured pearls, to a zircon and diamond clasp of conforming design, *ring size approximately M½, necklace shortest length 61cm. (3)*

£700 - 900

114

Three modern 18ct gold hardstone signet rings

The first with a bloodstone intaglio panel, the second with a cornelian panel, and the third with a lapis lazuli panel, *first ring size N½, second O, third H½. (3)*

£600 - 800

115

Tiffany & Co: A pair of cufflinks

Each oval panel of reeded design with brushed and polished finish, to a T-bar terminal, stamped '1995 750', in signed pouch and case, *panel length 2cm.*

£300 - 400

116

A blue topaz matched necklace and earpendants suite

The multi-strand blue cordette necklace with yellow precious metal fittings and beaded slider, suspending a blue topaz faceted bead pendant, the earpendants of conforming design, with pierced beaded surmounts, stamped '750', *pendant length 4.9cm, earpendants length 4cm. (2)*

£500 - 600

117≈

A vari gem-set pendant

The fancy pear-shaped blue topaz bordered by circular-cut rubies, surmounted by two navette-shaped clusters of tapered baguette-cut diamonds, an oval-cut yellow sapphire and tsavorite garnets, the white precious metal mount stamped '750', on a trace-link chain, *pendant length 4cm, chain length 42.6cm.*

£1,000 - 1,500



111 (part)

112 (part)

112 (part)

113 (part)

113 (part)

114

115

117

116

118

A sapphire and diamond necklace, a sapphire and diamond ring and a necklace

The first necklace of fancy paper-link design, suspending a fixed pendant set with three navette-shaped sapphires, surmounted by brilliant and marquise-cut diamonds, stamped '750', the ring set with a tiered line of brilliant-cut diamonds, bordered by navette-shaped sapphires, to a reeded shank stamped '750', the second necklace of wishbone design with frosted finish, stamped '585', *ring size L*. (3)

£600 - 800

119

An 18ct white gold sapphire and diamond brooch/pendant

The abstract openwork pendant set with marquise-cut sapphires and brilliant-cut diamonds, on a detachable brooch fitting, together with an unassociated curb-link chain. (2)

£500 - 700

120

An aquamarine and diamond ring

The collet set step-cut aquamarine between triangular-cut diamond shoulders, to an 18ct white gold tapering band, maker's mark 'MJD', *total diamond weight approximately 0.70ct, ring size M½*.

£500 - 700

121

An aquamarine and diamond dress ring

The rectangular step-cut aquamarine claw set between stylised foliate panel shoulders, accented with baguette and single-cut diamonds, two colour precious metal mounted, *ring size O*.

£400 - 600

122

A diamond dress ring

The three brilliant-cut diamonds between crossover rows of baguette-cut diamonds, *ring size N½*.

£500 - 700

123

A diamond brooch

The stylised wheatsheaf set throughout with brilliant, marquise and single-cut diamonds, white precious metal mounted, *diamond weight approximately 2.65ct, length 4.7cm*.

£800 - 1,200

By repute, this brooch was purchased at Garrards.

124

Three gem set rings

Comprising an 18ct white gold brilliant-cut diamond single stone ring, an 18ct white gold yellow sapphire and diamond ring, and a aquamarine and diamond ring, *first ring size N½*. (3)

£700 - 800

125

An aquamarine and diamond ring suite

Comprising an aquamarine and diamond ring, the collet set circular-cut aquamarine between channels of brilliant-cut diamonds, together with two shaped diamond half hoop rings, set with similarly cut diamonds, *ring size O*. (3)

£500 - 700

126

A diamond set flower brooch

The stamen set with old brilliant and single-cut diamonds, each on an articulated filament, to textured and engraved petals, *total diamond weight approximately 1.0ct, length 6cm*.

£1,200 - 1,500

127≈

Three gem set rings

The first set with seven brilliant-cut diamonds in illusion settings, the shank stamped '18ct', together with a sapphire and diamond cluster ring, the shank stamped '18ct', and an 18ct gold ruby and single-cut diamond five stone ring, *first ring size J, second N½*. (3)

£700 - 1,000

128

A sapphire and diamond cluster ring and a diamond cluster ring

The first with an oval-cut sapphire bordered by brilliant-cut diamonds, 18ct gold mounted, the second a brilliant-cut diamond target cluster ring, 18ct gold mounted, *ring sizes M and L respectively*. (2)

£500 - 700

129

A sapphire and diamond dress ring

Of abstract raised design, set with brilliant-cut diamonds and marquise-cut sapphires, 18ct white gold mounted, *total diamond weight approximately 2.05ct, London hallmark, ring size O½*.

£900 - 1,100

130

A diamond bracelet

The diamond set pierced oval-links with single brilliant-cut diamond set spacers, the clasp stamped '750', *length 18cm*.

£600 - 800

131

A sapphire and diamond bracelet

The round-cut sapphires interspaced by pairs of brilliant-cut diamonds, to a white precious metal brick-link bracelet, stamped '750', *length approximately 18cm*.

£500 - 700



118 (part)



119



120



121



122



123



124



129



125



126



127



118 (part)



128 (part)



128 (part)



130

131

132

An old-cut diamond cluster ring

The old-cut diamonds in claw settings, the shank stamped '18ct', *ring size K*.

£600 - 800

133

An early 20th century diamond half hoop ring

The scroll carved hoop set with three graduated old brilliant-cut diamonds, with similarly-cut diamond points between, stamped '18ct' and numbered '5767', inscribed to interior, *ring size M½*.

£500 - 600

134

A diamond five stone ring

Set with graduated old brilliant-cut diamonds, within a pierced gallery, inscribed to interior, *total diamond weight approximately 1.60ct, ring size H½ (sizing beads)*.

£800 - 1,200

135

A diamond cluster ring

Claw set with graduated brilliant-cut diamonds, the white precious metal mount stamped 'plat', *ring size M½*.

£700 - 900

136

A cultured pearl and diamond pendant and a diamond heart pendant

The first set with a cultured baroque pearl, surmounted by an abstract cluster of brilliant-cut diamonds, the second pavé set throughout with brilliant-cut diamonds, to ropetwist border, (one diamond deficient), *first pendant length 3.4cm. (2)*

£600 - 800

137

A diamond single stone ring

The round brilliant-cut diamond in a four claw setting, platinum mounted, *diamond weight approximately 0.50ct, ring size K½*.

£500 - 600

138

A diamond set ring

Of bombé design, pavé-set with brilliant-cut diamonds, *total diamond weight approximately 1.20ct, ring size M½*.

£600 - 800

139

A diamond cluster ring

Claw set with graduated brilliant-cut diamonds, the two colour precious metal mount stamped '18ct', *ring size Q*.

£600 - 800

140

A diamond single stone ring

The cushion-shaped old-cut diamond in claw setting, white precious metal mounted, *ring size L½*.

£700 - 900

141

A pair of diamond bombé earclips

The round domed earclips pavé set with brilliant-cut diamonds, mounts stamped '750', *diameter 14cm*.

£600 - 800

142

A pair of cultured pearl and diamond earrings and a pair of diamond pendent earrings

The first pair with diamond set flower head surmounts suspending a cultured pearl drop below, with hinged clip fittings, white precious metal mounted, stamped '750', the second pair with diamond set wheel surmounts, suspending an open lozenge-shaped pendant below, with line of single-cut diamonds within, on post fittings, white precious metal stamped '750', *first length 3.4cm, second 4.4cm. (2)*

£500 - 600

143

Boodles: An 18ct gold diamond set pendant necklace

The central two colour pendant of tear-drop shape, with wrythen diamond set detail, on two row back chain, box clasp stamped 'Boodles', *necklace length 43cm*.

£600 - 700

144

A diamond line bracelet

Designed as a line of white precious metal baton-shaped links, accented with brilliant-cut diamonds, with yellow precious metal beads between, stamped '18kt 750', *length 19cm*.

£700 - 900

145

A diamond line bracelet

The brilliant-cut diamond set track links to a clasp stamped '18k', *length 18cm*.

£600 - 800

146

Mappin & Webb: An 18ct gold diamond set ring and matched earrings suite

The ring of two colour bamboo design, accented with brilliant-cut diamonds in scatter formation, the earrings of yellow gold bamboo design, similarly set with brilliants, to stud fittings, *ring size L, earrings length 2.1cm. (2)*

£500 - 700

147

A diamond bangle

The narrow hinged bangle set to the front with alternate brilliant and baguette-cut diamonds, mounted in 18ct gold, *bangle diameter 5.6cm, total diamond weight approximately 1.50ct*.

£700 - 900

148

A diamond set bracelet

Set with four rows of brilliant-cut diamonds in four claw settings, *length 18cm*.

£800 - 1,200

133



132



134



136 (part)



138



137



139



135



140



136 (part)



141



142 (part)



142 (part)



143



146



147



148



145



144

149

A blue zircon and cultured pearl necklace, earrings and an aquamarine bar brooch

The pierced foliate panels with blue zircon set flowerheads and cultured pearl accents, 9ct gold mounted, with matching screw back earclips, together with a cushion-cut aquamarine set bar brooch, stamped '15ct', *necklace length approximately 45cm. (3)*

£300 - 400

150

A seed pearl floral necklace

The central floral panel to floral and foliate-shaped panels, on a belcher-link back chain, *length 42cm.*

£300 - 400

151

A half pearl and diamond pendant and a garnet and seed pearl bar brooch

The pendant of snowflake design, centrally set with an old brilliant-cut diamond, to radiating borders of graduated half pearls, on a singapore-link chain, the brooch with central cabochon garnet and seed pearl boss, to a pierced baton-link bar with triangular seed pearl set terminals, (four seed pearls deficient, all pearls untested), *pendant length 3cm, brooch length 5cm. (2)*

£400 - 600

152≈

A collection of seed pearl set jewellery

Comprising a late Victorian gold and seed pearl set graduating flowerhead necklace, the clasp stamped '15ct', a ruby and seed pearl accented shaped panel bracelet, stamped '18ct', a heart and bow brooch stamped '15ct', and a floral spray brooch, *necklace length 39cm. (4)*

£600 - 800

153

A vari-coloured diamond set insect brooch

Set throughout with old and rose-cut diamonds of white, yellow and brown tints, later rhodium plated, (diamonds untested for natural colour), *length 3cm.*

£400 - 600

154

A chain-link necklace and curb-link bracelet

The necklace of fancy design, with polished marquise-panel detail, stamped '750', the curb-link bracelet later inset with a cabochon sapphire and diamond oval cluster, *necklace length 60.5cm, bracelet length 20cm. (2)*

£700 - 900

155≈

A vari gem-set bracelet and four gem set rings

The curb-link bracelet spaced with collet set vari-coloured gemstones, stamped '15', together with a ruby and diamond half hoop ring, 18ct gold mounted, two pierced diamond panel rings, and a diamond five stone ring, *bracelet length 18.5cm. (5)*

£500 - 600

156

A diamond three stone ring

The stepped square panel setting set with graduated old-cut diamonds, inscribed to interior '11.1.44', *ring size N.*

£500 - 600

157

A diamond three stone ring

Claw set with three graduated old brilliant-cut diamonds, stamped '18ct', later rhodium plated, *total diamond weight approximately 1.0ct, ring size J½.*

£700 - 900

158

A diamond five stone ring

The graduated old brilliant-cut diamonds in claw settings, the shank stamped '18ct plat', *ring size M.*

£500 - 700



150

149 (part)

151 (part)



149 (part)



153



152 (part)



154 (part)



155 (part)



154 (part)



156



157



158



152 (part)

159

A pearl and diamond pendant, an emerald and diamond brooch and a seed pearl multi-strand necklace

The openwork pendant set with a frame of rose-cut diamonds, bordered by foliage and ribbon bows and suspending two pearl drops, (pearls untested), on a seed pearl single strand necklace with gem set clasp, the brooch of foliate cartouche design, set with a rectangular cabochon emerald within borders of rose-cut diamonds, some in closed-back settings, (later brooch fitting), the multi-strand seed pearl necklace suspending a rectangular panel pendant of textured abstract design, accented with a rectangular step-cut emerald and a brilliant-cut diamond, *pendant length 4.4cm, brooch width 4cm. (3)*

£400 - 600

160

A pearl and diamond choker

The slightly graduating row of 4.5mm-5.6mm pearls, to a bouton pearl and old brilliant-cut diamond cluster clasp mounted in closed-back setting, *total diamond weight approximately 1.80ct, clasp converted from a brooch, length 36cm.*

£700 - 900

Accompanied by a report from The Gem & Pearl Laboratory stating that an extensive sample of pearls were tested and found to be natural, saltwater. Report number 06477, dated 16th October 2012.

161

A pearl and diamond long necklace

Composed of two rows of baroque pearls, to a spherical clasp, pavé set with graduated old-cut diamonds, (pearls untested and unwarranted for natural/cultured origin), *shortest length 92.5cm.*

£500 - 800

162

A cultured pearl necklace

Composed of a single strand of uniform cultured pearls, to a reeded spherical clasp, stamped '750', *length 48cm.*

£300 - 400

163

A pearl and diamond brooch

The central button pearl of grey tint, between two smaller half pearls, with old brilliant-cut diamond points between, to a closed-back setting, (pearls untested, central pearl damaged), *total diamond weight approximately 0.35ct, length 2.7cm.*

£600 - 800

164

Two cultured pearl necklaces

The first necklace with three uniform strands of cultured pearls, to a turquoise and cultured pearl set cluster clasp, stamped '9ct', together with a uniform single strand necklace, with single-cut diamond set clasp, stamped '375', *first necklace shortest length 54cm, second necklace length 67cm. (2)*

£500 - 700

165

A graduated pearl and diamond necklace

The single strand of graduated pearls measuring approximately 6.8mm to 2.5mm in diameter, to an old-cut diamond single stone clasp, (pearls untested and unwarranted for natural/cultured origin), *length 46cm.*

£500 - 700

166

A pink tourmaline, diamond and cultured pearl necklace

The single strand cultured pearl necklace with gold coloured spacers between, suspending a heart-shaped pink tourmaline and single-cut diamond cluster pendant, surmounted by a square step-cut diamond, with cultured pearl drops below, (one drop detached and broken), together with a double strand cultured pearl necklace, and a single strand freshwater cultured pearl necklace, *first necklace length 37cm. (3)*

£500 - 700

167≈

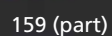
A cultured pearl and vari gem-set necklace

Composed of three rows of uniform cultured pearls, each approximately 6.3mm in diameter, to an 18ct gold panel clasp centred with an oval cabochon ruby and a row of oval-cut emeralds, bordered by brilliant-cut diamonds, maker's mark 'CG', in fitted case, *shortest length 37.5cm.*

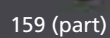
£600 - 800



159 (part)



159 (part)



159 (part)



160



161



162



163



164 (part)



165



166



167

168

A diamond single stone ring

The pierced reeded mount gypsy set with an old-cut diamond, *diamond weight approximately 0.55ct, ring size H½.*

£500 - 600

169≈

A collection of seven rings

The first an 18ct gold pearl and banded onyx mourning ring, inscribed 'M C Obt June 1823', with foliate chased shank, together with an 18ct gold half pearl flowerhead cluster ring with pierced foliate shoulders, a single stone diamond crossover ring, an 18ct gold three stone diamond ring, a ruby single stone ring, and two further panel rings. (7)

£400 - 500

170

A garnet pendant and a garnet multi-strand necklace

The heart-shaped pendant pavé set with faceted garnets, surmounted by a similarly set ribbon bow, with plaited hairwork glazed panel to reverse, on a faceted garnet bead chain, together with a multi-strand faceted garnet bead necklace, to a scrolling filigree panel clasp accented with rose-cut garnets, stamped '585' and 'Handarbeit', *pendant length 4cm.* (2)

£300 - 400

171

An early 19th century gold, garnet and enamel ring and scent bottle

The ring of scrolling foliate design, with applied black, gold and white enamel, set to the centre with a cabochon garnet, suspending a similarly set scent bottle modelled as an amphora, *ring size R½, pendant length including suspension 8cm.*

£800 - 1,200

172Y

A collection of Victorian and later jewellery

Comprising an opal and diamond half hoop ring, set with an oval cabochon opal between old-cut diamonds, with similarly-cut diamond points between, 18ct gold mounted, a pair of Victorian tortoiseshell and piqué work earpendants, of fleur-de-lys design, with later fittings, a tortoiseshell and piqué work stud, a hardstone cameo and rose-cut diamond ring, a diamond set panel ring, a pair of onyx and seed pearl monogram earpendants, and an onyx and seed pearl brooch, *first ring size M.* (7)

£500 - 700

173≈

A collection of vari gem-set jewellery

Comprising a sapphire bar brooch, the scroll pierced bar set with five graduated cushion-shaped sapphires, stamped '18', a pink paste and rose-cut diamond brooch, of pierced cartouche design, a cabochon-cut ruby and rose-cut diamond bar brooch, a pair of garnet earpendants, set with vari-cut stones in closed foil-backed settings, with later fittings, a similarly set garnet bar brooch, with later bar mount, a garnet cluster brooch, with later fitting, and a foiled-back pink paste brooch, *first brooch length 5.6cm.* (7)

£500 - 700

174

A mid Victorian garnet, emerald and opal ring

In 15ct gold beaded setting, between guilloché borders, together with an 18ct gold large plain wedding band, a smaller 22ct gold wedding band, and a 1911 sovereign. (4)

£600 - 700

175

A Victorian cabochon garnet bangle and brooch

The hinged bangle centred with a later applied Victorian circular panel with carved cabochon garnet boss, inset with half pearl star motif, within ropetwist edged design, the bangle engraved with scrolling detail, together with a bar brooch, later applied with two oval cabochon garnets, each mounted with a diamond set fly motif, (one diamond missing, each lacking one cabochon stone eye), *bangle inner diameter 5.5cm.* (2)

£500 - 600

176

Four fob seals

Comprising an early 19th century gold cornelian fob seal, the setting with reeded and floral decoration, together with three further fob seals. (4)

£200 - 300

177Y≈

A Victorian serpent bangle, a coral multi-strand necklace and a lapis lazuli and cultured pearl necklace

The bangle designed as an entwined scrolling serpent's body, applied with bead and ropetwist decoration and set with a sapphire and rose-cut diamond cluster and ruby eyes, the multi-strand coral bead necklace with oval cameo clasp, carved to depict a female portrait in profile, the lapis lazuli and cultured pearl multi-strand necklace to a tapered and articulated panel clasp, engraved with foliate scrolls, *bangle inner diameter 5.8cm.* (3)

£600 - 800



168



169 (part)



170 (part)



170 (part)



172 (part)



172 (part)



172 (part)



171



173 (part)



174 (part)



173 (part)



19 (part)



172 (part)



173 (part)



151 (part)



176



175 (part)



175 (part)



177 (part)

178

A fancy gate-link bracelet

The engraved gate-link bracelet to padlock clasp stamped '15ct', length 19cm, gross weight 29.2gm.

£400 - 600

179

A diamond, half pearl and blue enamel pendant and a diamond single stone ring

The heart-shaped pendant centred with an oval rose-cut diamond in closed foil-backed setting, to a blue enamel ground, bordered by half pearls, with plaited hairwork panel to reverse, on an unassociated spiga-link chain, (pearls untested), the ring gypsy claw set with an old-cut diamond, indistinctly stamped '18ct', pendant length 3cm, ring size N.

(2)

£500 - 700

180

A diamond and enamel pendant

The oval blue enamelled panel set with old mine-cut diamonds in the form of a star, with a later seed pearl set surmount, (some damage to enamel), length 5cm.

£600 - 800

181

A Georgian style blue enamel and diamond brooch

The oval blue enamel panel with applied diamond set foliate detail, within a border of rose-cut diamonds, the pin stamped '18k', width 3.6cm.

£400 - 500

182

A large cameo brooch/pendant

The oval shell cameo carved to depict Psyche kneeling in a landscape scene, surrounded by putti, to a millegrained border and pierced scalloped frame, yellow precious metal mounted, length 8.6cm.

£500 - 700



187 (part)

183

Two Victorian shell cameo brooches

The first oval cameo carved to depict the Greek god Zeus, King of Olympus, and his wife Hera, with an eagle and their son Hermes to the foreground, bordered by an openwork frame of C-scrolls, beads and foliage, the second cameo carved to depict a classical portrait in profile, bordered by a foliate scrolling frame, (some damage, later fittings), first brooch length 5.8cm. (2)

£500 - 600

In Greek mythology, Zeus was the god of the sky and weather, living in a palace above Mount Olympus, and supreme god in the Greek pantheon. Zeus is often depicted as a regal, bearded male wearing an olive leaf wreath, with an eagle to symbolise his strength and power. Hera, Queen of Olympus, wears a diadem as Queen of heaven. Hermes, their son, is depicted as a messenger of the gods, wearing a petasus (winged hat) and holding a caduceus, to symbolise peace, prosperity and commerce.

184

A Victorian style enamel, diamond and seed pearl pendant

The oval panel pendant highlighted with blue and white enamel, centred with a rose-cut diamond and seed pearl cross motif, within a border of similarly-cut diamonds, surmounted by a ribbon bow and oval bale of conforming design, on a fine seed pearl and trace-link chain stamped '585', pendant length 4.9cm.

£300 - 500

185

A pair of Victorian enamelled earpendants and a shell cameo brooch

The blue enamelled earpendants with applied bead and ropetwist detail, on later modern fittings, the Victorian style oval shell cameo carved to depict the Holy Family, within a C-scroll border with cultured pearl highlights, cameo scratch signed to the reverse, 9ct gold mounted, hallmarked for Birmingham 1973, (pearls untested for origin), earpendants length 5cm. (2)

£250 - 350

186

A Continental enamel, diamond and seed pearl brooch, and a pair of gem set earpendants

The brooch of foliate cartouche design, centred with a circular enamel panel depicting a female portrait in profile, heightened in shades of blue, red, lilac and bronze enamel, within a seed pearl and rose-cut diamond border, with French eagle's head control mark, the earpendants of engraved beaded design, each set with a circular-cut purple stone and suspending a seed pearl drop below, later converted with clip fittings, brooch length 3.6cm. (2)

£300 - 400

187≈

Two brooches and a pendant on chain

The first brooch of abstract design with brilliant-cut diamond accents, stamped '750', together with a cultured pearl, ruby and lasque-cut diamond set insect brooch, and a ruby set circular locket pendant, stamped '750', on a ropetwist-link chain stamped '585'. (3)

£500 - 700



178



179 (part)



179 (part)



180



181



184



182



183 (part)



185 (part)



183 (part)



186 (part)



185 (part)



186 (part)



177 (part)

177 (part)

188

An Art Deco diamond set single clip brooch

Of pierced stylised scroll design, millegrain set with a flowerhead cluster of old brilliant-cut diamonds, bordered by channels of old and rose-cut stones, white precious metal mounted, in fitted case, (one diamond deficient), *length 3.3cm.*

£600 - 800

189

A diamond cross pendant

The white precious metal cross set with princess-cut diamonds, stamped '750', *length including bale 2.6cm.*

£500 - 700

190

A diamond cross pendant

The Latin cross set throughout with brilliant-cut diamonds, terminating in similarly-cut diamond cluster finials, to a trace-link chain, (one diamond deficient), *total diamond weight approximately 1.75ct, pendant length 6.2cm, chain length 42cm.*

£1,000 - 1,500

191

A brilliant and princess-cut diamond cluster ring

The central trio of claw set princess-cut diamonds surrounded by graduated brilliant-cut diamonds, *total diamond weight approximately 1.75ct.*

£700 - 900

192

A diamond single stone ring

The brilliant-cut diamond in a raised claw setting with pierced scalloped surround, white precious metal mounted, *total diamond weight approximately 0.70ct, ring size O.*

£400 - 500

193

A diamond single stone ring

The old brilliant-cut diamond in a claw setting, white precious metal mounted, *diamond weight approximately 0.70ct, ring size M½.*

£500 - 600

194

An early 20th century diamond and sapphire panel ring

The rectangular panel pavé set with graduated old-cut diamonds, to a scroll pierced gallery and millegrained shoulders highlighted with triangular-cut sapphires and further diamonds, to foliate engraved shank, white precious metal mounted, *ring size F.*

£500 - 700

195

A diamond cross pendant

Finely pierced with foliate scrolls, set throughout with cushion and single-cut diamonds, each within an individual lozenge-shaped collet, later rhodium plated, *total diamond weight approximately 0.60ct, length 6.3cm.*

£600 - 800

196

A diamond five stone ring

Claw set with five old brilliant-cut diamonds, the white precious metal mount stamped 'Pall', *total diamond weight approximately 1.20ct, ring size Q½.*

£500 - 700

197

A two row diamond ring

The rows set with old brilliant-cut diamonds, the shank stamped 'plat', *ring size L.*

£700 - 1,000

198

An early 20th century diamond panel ring

The shaped rectangular panel of pierced geometric design, millegrain set with three graduated old-cut diamonds within borders of rose-cut diamonds, white precious metal mounted, *ring size O.*

£600 - 800

199

A diamond bar brooch and two diamond pendants

The brooch with a pierced geometric panel, centred with a brilliant-cut diamond to millegrained borders of similarly cut stones, together with two cross pendants, each set with graduated brilliant-cut diamonds, all white precious metal mounted, *brooch length 3.8cm. (3)*

£600 - 800

200

A late Victorian half pearl and diamond bar brooch

Composed of three graduated half pearl and old-cut diamond clusters, with pierced diamond set foliate panels between, gold and silver mounted, in semi-fitted case signed 'Frazer & Haws, Piccadilly', (pearls untested), *length 5.7cm.*

£600 - 800

201

A Belle Époque synthetic emerald and diamond brooch, circa 1915

The pierced lozenge-shaped plaque millegrain set throughout with single and old brilliant-cut diamonds, highlighted with calibré-cut synthetic emeralds, *length 6.2cm.*

£300 - 400

202

An early 20th century pearl and diamond bar brooch

Centrally set with a blister pearl within a millegrained rose-cut diamond surround, to a similarly cut diamond bar, suspending a pear shaped rose-cut diamond drop below, mounted in silver and gold, (pearl untested), *length 8.9cm.*

£500 - 700

203

Three pairs of diamond earrings

Comprising a pair of flowerhead cluster earpendants, stamped '750', a pair of earstuds set with marquise-cut diamonds, and a pair of diamond cluster studs. (3)

£600 - 800

204

A diamond line bracelet

Designed as a line of circular cluster links, each set with graduated brilliant-cut diamonds, white precious metal mounted, stamped '750', *length 18cm.*

£800 - 1,200

205

A diamond bracelet

Composed of eight articulated panels, each millegrain set with brilliant-cut diamonds, interspersed with similarly-cut diamond clusters, *total diamond weight approximately 3.55ct, length 19.3cm.*

£1,200 - 1,500

206

An early 20th century diamond panel bracelet

Composed of three shaped and graduated panels of pierced geometric design, each millegrain collet set with an old brilliant-cut diamond, within borders of similarly cut stones, two colour precious metal mounted, stamped '585', *length approximately 16cm.*

£600 - 800



188



189



195



190



192



194



193

191



196



197



198



199



201



202



203 (part)



200



204

205

206

207

A collection of buttons

Comprising a set of four blue and white enamelled striped buttons with rose-cut diamond borders, together with a set of six mother o' pearl and blue enamel buttons (two pairs converted to cufflinks), and a set of six mother o' pearl buttons with turquoise accents, the backs stamped '9ct'.
£500 - 600

208

A pair of banded agate and diamond cufflinks

Each circular terminal with monochrome banded agate panel, within a millegrained border of rose-cut diamonds, two colour precious metal mounted, *panel diameter 1.45cm*.
£200 - 300

209≈

A collection of gentleman's jewellery

Comprising a set of four ruby and mother o' pearl buttons, each circular mother o' pearl panel modelled as a button, with circular-cut ruby accents, (rubies untested for natural/synthetic origin), in fitted case, (two buttons deficient), a collection of nine banded agate dress studs, of various sizes, two cultured pearl dress stud sets, cased, two 18ct gold dress studs, and four others, stamped '18', (one stud damaged), *first panel diameter 1.45cm*.
£200 - 300

210

A pair of demantoid garnet, mother-of-pearl and enamel cufflinks

Double-sided: each mother-of-pearl circular plaque centrally set with a circular-cut demantoid garnet, within a green guilloché enamel border, to a chain-link connector, *diameter 1.4cm*.
£500 - 700

211

A white paste fringe necklace and earpendants

Composed of graduating circular clusters throughout, and suspending tear-shaped pendant drops below, in open back settings, (one paste stone missing), with matching earpendants without fittings, (loose screw back fittings provided), with unassociated box, *length 36.5cm*.
£700 - 900

See inside front cover illustration

212

A collection of paste and gem set jewellery

Comprising a 19th century green paste necklace, the circular cluster pendant set with cushion-shaped pastes in closed foil-backed settings, with central plaited hairwork panel, to a similarly set paste rivière chain, a garnet rivière necklace, set with oval-cut garnets in closed foil-backed settings, (later extended, pendant drop missing), a green paste girandole brooch/pendant, with French boar's head marks to bale, (later brooch fitting), five other brooches, a cut steel cross pendant, three other pendants, and a pair of earpendants, (later converted), *first necklace length 44cm*. (13)
£600 - 800

See inside front cover illustration

213

An Austro-Hungarian enamel, half pearl and paste hinged bangle

The silver-gilt openwork filigree bangle of floral and foliate design, set to the front with a ceramic flowerhead, decorated with polychrome enamel and foiled pastes in closed-back settings, accented with half pearl highlights, (pearls untested), mounted in gilt metal, *inner diameter 6.5cm*.
£500 - 700

See inside back cover illustration.

214

A pair of freshwater cultured pearl and diamond cluster earstuds

Each circular cluster composed of millegrain collet set brilliant-cut diamonds, around a central freshwater cultured pearl, *cluster diameter 1.4cm, total diamond weight approximately 1.0ct*.
£750 - 850

215

A pair of sapphire and diamond earpendants

Each drop composed of collet set circular-cut sapphires, within plain hoop surrounds with four collet set diamond highlights, on a graduated baton suspension, millegrain set with brilliant-cut diamonds, surmounted by a further collet set diamond, to stud fittings, *length 3.3cm*.
£500 - 600

216

A diamond and emerald cluster pendant

The pear-cut emerald claw set and surrounded by brilliant-cut diamonds, suspended beneath a diamond surmount, on a fine belcher-link chain.
£1,250 - 1,500

217

An aquamarine and diamond pendant

The triangular mixed-cut aquamarine suspended from a trio of brilliant-cut diamonds, surmounted by a fluted diamond set bale, white precious metal mounted, on a fine curb-link chain stamped '375', *pendant length 3.6cm, chain length 39cm*.
£500 - 700

218

A pair of Victorian style diamond and freshwater cultured pearl earpendants

The cultured freshwater pearls within quatrefoil surrounds, set with graduated brilliant-cut diamonds, beneath diamond set foliate surmounts, white precious metal mounted, to stud fittings, *length 2.5cm*.
£800 - 1,000



No Lot



207 (part)



No Lot



208



209 (part)



207 (part)



209 (part)



210



219

An Art Deco style diamond ring

The central collet set brilliant-cut diamond within a diamond set hexagonal surround, with baguette-cut diamond set shoulders, white precious metal mount stamped '18ct', *principal diamond weight approximately 0.60ct, ring size O.*

£850 - 950

220

An oval emerald and diamond cluster ring

The oval mixed-cut emerald claw set within an oval surround of brilliant-cut diamonds, between similarly set shoulders, white precious metal mount stamped '18ct', *ring size M.*

£650 - 750

221

An emerald and diamond cluster ring

The step-cut emerald millegrain collet set within a surround of brilliant-cut diamonds, with square step-cut diamonds to the cardinal points, white precious metal mount stamped '18ct', *ring size N½.*

£520 - 600

222

A tanzanite and diamond ring

The oval mixed-cut tanzanite collet set within a surround of brilliant-cut diamonds, with larger collet set brilliants to the shoulders, white precious metal mounted, *ring size O, total diamond weight approximately 0.85ct.*

£1,200 - 1,400

223

An early 20th century diamond and emerald panel ring

The pierced oval panel millegrain collet set to the centre with three graduated old brilliant-cut diamonds, bordered by channels of shaped step-cut emeralds and similarly cut diamonds, white precious metal mounted, *ring size L.*

£600 - 800

224

A sapphire and diamond cluster ring

The rectangular step-cut sapphire claw set within a border of old brilliant-cut diamonds, two colour precious metal mounted, *ring size P.*

£500 - 700

225

An aquamarine and diamond cluster ring

The step-cut aquamarine collet set within a surround of graduated brilliant-cut diamonds, between millegrain set single-cut diamond shoulders, white precious metal mounted stamped '18ct', *ring size P½, total diamond weight approximately 1.15ct, weight of aquamarine approximately 1.50ct.*

£1,000 - 1,200

226

An aquamarine and diamond cocktail ring

The step-cut aquamarine claw set between stepped shoulders set with single-cut diamonds, white precious metal mounted, *ring size N½, weight of aquamarine approximately 6.50ct.*

£800 - 1,000

227

A sapphire and diamond ring

The oval mixed-cut collet set sapphire between stylized stirrup shoulders set with single and baguette-cut diamonds, white precious metal mount stamped '18ct', *ring size P.*

£650 - 750

228

An opal and diamond ring

Of asymmetric design, with pear-shaped cabochon opal and brilliant-cut diamond cluster to one side and pear-cut diamond to the other, shank stamped '585', *principal diamond weight approximately 0.40ct, ring size M.*

£500 - 600

229≈

A sapphire and diamond full hoop eternity ring

Alternately set with trios of brilliant-cut diamonds and square step-cut sapphires, white precious metal mounted, together with a ruby and diamond example, (most settings vacant, some damage), *first ring size L. (2)*

£300 - 400

230

A diamond single stone ring

The brilliant-cut diamond tension set in a heavy gauge band of circular cross section, the shank stamped 'Niessing' and '950', numbered 'F102466', *ring size H½ to I.*

£600 - 800

231

An early 20th century diamond circlet brooch

Pierced with herringbone motifs and millegrain set with old brilliant-cut diamonds, white precious metal mounted, *diameter 2.4cm.*

£500 - 700

232

A Victorian diamond crescent brooch

The tiered setting pinched claw set with graduated old brilliant-cut diamonds, with similarly cut diamond points between, gold and silver mounted, *length 3cm.*

£500 - 700

233≈

A ruby and diamond bow brooch

The stylised ribbon bow millegrain set with old brilliant-cut diamonds, bordered by channels of square-cut rubies, white precious metal mounted, *length 4.9cm.*

£700 - 900

See front cover illustration.

234≈

A vari gem-set butterfly brooch

The butterfly with oval mixed-cut sapphire thorax, graduated brilliant-cut diamond set abdomen, wings and head and ruby eyes, *total diamond weight approximately 2.50ct, wing span 4.5cm.*

£1,100 - 1,200



214



215



216



217



219



221



220



223



224



218



222



225



226



227



228



231



232



233



234



229



230



247

235

A citrine necklace and two brooches

The necklace with an oval-cut citrine suspended from a rose-cut diamond set pierced panel, to a belcher-link chain, together with a blue zircon and cultured pearl set floral hoop brooch, and a garnet and half pearl set insect bar brooch, (pearls untested for origin). (3)

£400 - 500

236

An amethyst and seed pearl necklace

Composed of three graduated pendant drops of foliate design, set with oval-cut amethysts, the central pendant bordered by seed pearls, to a fine belcher-link back chain, *length 38cm*.

£250 - 350

237

An opal bead necklace

Composed of a line of flattened blue opal beads, with alternating pierced batons and curb-link chains between, yellow precious metal mounted, *length 101cm*.

£800 - 1,000

238

An opal bead, diamond and paste necklace

Composed of a line of graduated opal beads, with colourless paste spacers between, to a pierced and millegrained clasp accented with old and rose-cut diamonds, *length 44cm*.

£500 - 600

239

An 18ct gold diamond single stone ring

The brilliant-cut diamond in an eight claw setting, *diamond weight approximately 1.0ct, ring size L½*.

£500 - 700

240

A cultured pearl and diamond cluster ring

The collet set pearl (untested), within a surround of old-cut diamonds, in pinched collet setting, to 18ct yellow gold shank with scrollwork shoulders, (cluster later mounted), *ring size K*.

£300 - 500

241

Cartier: A diamond set band ring

The yellow precious metal band set throughout with brilliant-cut diamonds, signed and stamped '750 1992', numbered '48 D17905', *ring size I*.

£500 - 600

242

A collection of antique and later jewellery and watches

Comprising a cultured pearl and diamond ring, the cultured pearl between single-cut diamond set shoulders, a turquoise and seed pearl set lady's wristwatch, the circular white enamel dial with Roman numerals, to a turquoise and seed pearl bezel and later gate-link bracelet, two other gold cased wristwatches, an amazonite and marcasite brooch, the oval cabochon amazonite panel surmounted by a pierced scrolling border, (later brooch pin), a vari-coloured paste floral spray brooch, of stylised sinuous design, a pair of cultured pearl dress studs, cased, a baroque pearl stick pin, cased, and a 15ct gold and diamond set bar brooch, *ring size L½*.

£500 - 600

243

A topaz brooch/pendant, a sapphire and diamond ring and a gem set pendant

The first of openwork design with trios of textured leaves and flowerheads, set with oval-cut pink topaz in closed foil-backed settings, (later brooch pin), the ring of half hoop design, alternately set with circular-cut sapphires and brilliant-cut diamonds, 18ct gold mounted, the pendant of openwork cartouche design, set with garnet-topped doublets and seed pearls, stamped '9c', *first brooch/pendant length 4cm*. (3)

£600 - 800

244

An 18ct gold diamond set flower brooch

The textured flowerhead with a central diamond set cluster, *length approximately 5.2cm*.

£400 - 500

245

A Georgian hairwork love pendant

The heart-shaped design glazed to both sides, and enclosing a lock of hair, with applied initials MCL in threadwork, within an outer white enamelled border, with gilt lettering spelling 'La femme que j'aime', on rigid suspensory loop, with later added pearl drop below, *length 3.3cm*.

£500 - 700

The inscription translates 'The lady whom I love'.

See back cover illustration.

246

A late 18th century small double sided glazed locket

Enclosing a lock of hair, in collet mount, with rigid suspensory loop, together with an early 19th century double sided circular glazed locket enclosing hairwork design, applied with initial and gilt threadwork, with seed pearl highlights, within foliate border, *first locket length 2cm, second 5.1cm*. (2)

£400 - 500

247

A yellow sapphire and diamond ring

The collet set circular-cut sapphire within an octagonal frame, between similarly set square-cut diamond shoulders, *total diamond weight approximately 0.35ct, ring size R½*.

£500 - 700



235 (part)



236

237



238



240



239



242 (part)



241



235 (part)



242 (part)



243 (part)



242 (part)



244



246 (part)



246 (part)



245



235 (part)

Watches



248

TAG Heuer: A lady's Aquaracer stainless steel wristwatch

The signed mother o' pearl dial with diamond set markers and an Arabic numeral at 12, the bezel set with brilliant-cut diamonds, to a two colour brick-link bracelet, numbered 'WAF1450 RRR0545', in original box, *dial diameter 1.9cm.*

£500 - 700

249

Universal Geneve: A gentleman's yellow precious metal wristwatch

The signed white enamel dial with gilt Roman numerals, date aperture at 3 o'clock, the integrated bracelet strap stamped '750', in fitted box, *dial diameter 3cm.*

£700 - 1,000

250

Cartier: A lady's Panthère wristwatch

The circular signed dial with black Roman numerals and secret signature at 7, to a bi-colour metal case with screwhead detail and bi-colour brick-link bracelet, case numbered '1057920', (winder deficient), case *diameter 2.35cm.*

£500 - 700

251

Tudor Rolex: A lady's Princess Oysterdate Lady-Sub wristwatch

The circular signed black dial with date display, outer minute track, arrowhead and bead markers, to a bi-colour metal tapered brick-link bracelet, with associated box, papers and spare bracelet links, case *length 3.3cm.*

£600 - 800

252

Ebel: A lady's diamond set wristwatch

The circular signed mother o' pearl dial with single-cut diamond markers and date display, to a parcel-gilt stainless steel case with screwhead decoration, numbered '52625336', and tapered articulated bracelet, with original case and papers, *dial diameter 1.9cm.*

£500 - 700

253

TAG Heuer: An Alter Ego diamond set lady's wristwatch

The signed mother o' pearl dial with diamond set bead markers, the bezel pavé set with brilliant-cut diamonds, to a shaped track-link bracelet strap, the back of the case numbered 'WP131E DV6244' and the strap numbered 'BA0751', with original box and instructions, *watch head width 2.9cm.*

£350 - 450

254

Chopard: A lady's stainless steel wristwatch

The rectangular signed blue dial with silvered Roman numerals and subsidiary seconds dial, to signed stainless steel case, numbered '824678 8357', and tapered openwork bracelet, *dial length 1.85cm.*

£600 - 800



248



249



250



251



252



253



254

255

Longines: A gentleman's wristwatch

The silvered dial with baton markers and subsidiary seconds dial, the case stamped '18k', the signed movement numbered '13679456', on an unassociated woven-link bracelet strap, *length 18.5cm, dial diameter 3cm.*

£500 - 600

256

Longines: A lady's diamond set wristwatch

The circular signed white dial with black Roman numerals and inner minute track, to a brilliant-cut diamond set case, numbered '28744847' and stamped '750', on a tapered textured bracelet with French eagle's head control marks, in associated box, *case diameter 2.4cm.*

£700 - 900

257

An Omega wristwatch and a small dress set

The watch with signed rectangular dial in a polished precious metal case, the case stamped '14k' and numbered '9346790' on a later woven-link bracelet strap stamped '9ct', together with a pair of mother o' pearl and seed pearl accented cufflinks and two dress studs, the backs stamped '9ct', *watch dial length 2.1cm. (2)*

£350 - 450

258

Timor: A lady's wristwatch

The circular signed silvered dial with gilt baton markers and Arabic numeral at 12, between scrolling shoulders, case numbered '1581' and stamped '18k', to a tapered textured bracelet with French eagle's head control marks, *length 17.5cm.*

£300 - 500

259

Rolex: An 18ct gold lady's wristwatch, circa 1930

The circular silvered dial with black Arabic numerals, to a signed jewelled movement, case bearing import marks, on 18ct gold expanding bracelet strap.

£500 - 600

With full service documentation.

260

Dunhill: A two colour precious yellow metal rectangular lighter

With white and yellow precious metal woven style textured surface, stamped '750', *total gross weight 92.3gm.*

£400 - 600



255



256



257 (part)



258



259



260

261

Zenith: An 18ct gold wristwatch

The signed squared dial with yellow metal Arabic numerals and subsidiary seconds dial, the movement numbered '2937436', the case numbered '329195', on an unassociated black leather strap, *dial width 1.9cm*.

£400 - 600

262

Rolex: An Oyster wristwatch

The circular signed silvered dial with black Arabic numerals and outer scale 0-60, to a stainless steel case numbered '155835 3478', inscribed to reverse, on an unassociated strap, *case length 3.4cm*.

£200 - 400

263

Movado: A lady's wristwatch

The signed rectangular dial with gilt Arabic and bead numerals, seconds subsidiary dial at numeral 6, 15 jewelled signed movement, within stepped polished bezel, between reeded lugs, on black leather strap, *watch head length 2.7cm (excluding lugs)*.

£500 - 600

264

Omega: A Seamaster wristwatch

The signed dial with quartered detail and baton hour markers, the case stamped '0.750', and numbered '285949 2866 S.C', on an unassociated black leather strap, *dial diameter 2.8cm*.

£400 - 600

265

Omega: A stainless steel Seamaster chronograph wristwatch

The signed silvered circular dial with applied luminous baton hour markers, outer printed minute track, tachymeter scale, hands with luminous inserts, secondary dials at 3, 6 and 9 for running seconds, 30 minute and 12 hour recording, brushed stainless steel tonneau-shaped case with screw on back, twin pushers flanking the crown, to an unassociated brown leather strap.

£500 - 600



261



262



263



264



265

266

A diamond set cocktail watch

The tonneau-shaped silvered dial with black Arabic numerals and inner minute track, to a shaped rectangular case with flowerhead cluster terminals and pierced shoulders of foliate and ribbon bow design, set throughout with brilliant and single-cut diamonds, case stamped 'All Platinum', to a later black cordette strap with white precious metal fittings, stamped '9ct', in fitted case, *dial length 1.15cm*.

£600 - 800

267

Certina: A diamond set 18ct gold lady's wristwatch

The signed circular dial with baton hour markers, the bezel set with pairs of single-cut diamonds, the case numbered to the inside '717 5037 67', the reverse numbered '717 9008 67', to integrated woven-link bracelet strap, in original box, *length approximately 17cm*.

£800 - 1,200

268

A diamond cocktail watch

The octagonal silvered dial with black Arabic numerals and blued steel hands, to millegrained case and pierced geometric shoulders, set throughout with single-cut diamonds, the case stamped 'platinum' and numbered '4130', on later black cordette strap, *dial length 1.4cm*.

£500 - 600

269

Girard Perregaux: A lady's sapphire and diamond set bracelet watch

The circular signed silvered dial with baton markers, to a hinged case cover of abstract baton-link design, highlighted with circular-cut sapphires and brilliant-cut diamonds, on a tapered textured bracelet, white precious metal mounted, stamped '0,750', *length 17cm*.

£900 - 1,200

270

A diamond cocktail watch

The shaped rectangular silvered dial with black Arabic numerals and inner minute track, to a single-cut diamond set case and pierced scrolling shoulders, case reverse numbered '3323', case stamped 'Platinum London Make', on later unassociated strap, *dial length 1.5cm*.

£200 - 300

271

Omega: A lady's wristwatch

The cushion-shaped signed silvered dial with baton markers, to signed movement numbered '33265904' and case numbered '8286 001', the tapered textured bracelet stamped '750', together with an emerald and diamond navette-shaped cluster ring, a tourmaline and diamond cluster ring, a pendant and a signet ring, *watch dial length 1.7cm*. (5)

£400 - 600

272

An Art Deco pendant watch

The dial signed 'Victor', with black Arabic numerals, the bezel set with small old-cut diamonds, to a black stone and rose-cut diamond set winder, suspended from an unassociated black leather strap with diamond accented chevron bar, to a diamond set buckle-shaped brooch, case with French dog's head assay mark, *dial length 2.1cm*.

£300 - 400

273

Corum: A lady's diamond set wristwatch

The circular signed dial with oversized blue Arabic numerals and bead markers, to a brilliant-cut diamond set case numbered '812122', domed glass and signed blue leather strap, *case length 3.1cm*.

£300 - 500



266



267



268



269



270

271 (part)



272



273

274

A 9ct gold hunter pocket watch

The white enamelled dial signed 'Russells, 18 Church St, Liverpool', with black Roman numerals and subsidiary seconds dial, the movement signed and numbered '400833', in an unassociated case, *gross weight 84.5gm.*

£300 - 400

275

Thomas Russell & Son: An 18ct gold half hunter fob watch

The gilt dial with black Roman numerals, to a foliate engraved case with blue enamel chapter ring, the movement signed 'Makers to the Queen, Thos Russell & Son, Liverpool & London', and numbered '74882', with unassociated chain, *total gross fob watch weight approximately 51gm.*

£300 - 500

276

An open face chronograph pocket watch and chain

The white enamel dial with black Roman numerals, subsidiary seconds dial at 6, subsidiary 0-60 dial at 12, and blued steel spade hands, to a yellow precious metal case stamped '18c 0,755', with Swiss gold marks, to $\frac{3}{4}$ plate lever movement signed 'Edward Pike, Manchester', case and movement numbered '272491', together with a fine yellow precious metal belcher-link chain, and 18ct gold T-bar suspension, *watch case diameter 5.2cm, gross watch weight approximately 112gm. (2)*

£800 - 1,200

277

An 18ct gold open face pocket watch

The white enamel dial with black Roman numerals and subsidiary seconds dial, signed 'Joyce Murray, London', to signed $\frac{3}{4}$ plate movement and engine-turned case with crested cartouche, hallmarked for 1865, case, movement and dial numbered '4287', *case diameter 4.9cm, gross weight approximately 96.5gm.*

£350 - 450

278

An 18ct gold pocket watch and a fob watch

The 18ct gold open faced pocket watch signed 'Manoah Rhodes & Sons Ltd Bradford', with white enamel dial, black Arabic numerals and subsidiary seconds dial, the signed movement numbered '15357', case monogrammed, together with a half hunter fob watch with white enamel dial and black Roman numerals, the case stamped '14k', and a cross-shaped charm. (3)

£500 - 700

End of Sale

**The next Oxford Jewellery sale will be on
Tuesday 12 March**



274



275



276



277



278 (part)



Objets Précieux de Lalique

Wednesday 17 April 2013
Knightsbridge, London

Viewing

Sunday 14th April 11am to 3pm
Monday 15th April 9am to 4.30pm
Tuesday 16th April 9am to 4.30pm

+44 (0) 20 7393 3856
mark.oliver@bonhams.com

Part of a private collection of
decorative glass by René Lalique.
Estimates available on request.



20th Century Decorative Arts

Wednesday 19 June 2013 at 1pm
New Bond Street, London
Entries now invited

Closing date for entries
Friday 19 April 2013

+44 (0) 207 393 3856
decorativearts@bonhams.com

Demetre Chiparus
'The Dolly Sisters'
an Important Large Size Art Deco
Cold-Painted Bronze and Carved Ivory
Group, circa 1925
Sold for £277,250, November 2012

NOTICE TO BIDDERS

This notice is addressed by *Bonhams* to any person who may be interested in a *Lot*, including *Bidders* and potential *Bidders* (including any eventual *Buyer* of the *Lot*). For ease of reference we refer to such persons as “*Bidders*” or “you”. Our List of Definitions and Glossary is incorporated into this *Notice to Bidders*. It is at Appendix 3 at the back of the *Catalogue*. Where words and phrases are used in this notice which are in the List of Definitions, they are printed in italics.

IMPORTANT: Additional information applicable to the *Sale* may be set out in the *Catalogue* for the *Sale*, in an insert in the *Catalogue* and/or in a notice displayed at the *Sale* venue and you should read them as well. Announcements affecting the *Sale* may also be given out orally before and during the *Sale* without prior written notice. You should be alert to the possibility of changes and ask in advance of bidding if there have been any.

1. OUR ROLE

In its role as *Auctioneer* of *Lots*, *Bonhams* acts solely for and in the interests of the *Seller*. *Bonhams’* job is to sell the *Lot* at the highest price obtainable at the *Sale* to a *Bidder*. *Bonhams* does not act for *Buyers* or *Bidders* in this role and does not give advice to *Buyers* or *Bidders*. When it or its staff make statements about a *Lot* or, if *Bonhams* provides a *Condition Report* on a *Lot* it is doing that on behalf of the *Seller* of the *Lot*. *Bidders* and *Buyers* who are themselves not expert in the *Lots* are strongly advised to seek and obtain independent advice on the *Lots* and their value before bidding for them. The *Seller* has authorised *Bonhams* to sell the *Lot* as its agent on its behalf and, save where we expressly make it clear to the contrary, *Bonhams* acts only as agent for the *Seller*. Any statement or representation we make in respect of a *Lot* is made on the *Seller’s* behalf and, unless *Bonhams* sells a *Lot* as principal, not on our behalf and any *Contract for Sale* is between the *Buyer* and the *Seller* and not with us. If *Bonhams* sells a *Lot* as principal this will either be stated in the *Catalogue* or an announcement to that effect will be made by the *Auctioneer*, or it will be stated in a notice at the *Sale* or an insert in the *Catalogue*.

Bonhams does not owe or undertake or agree to any duty or responsibility to you in contract or tort (whether direct, collateral, express, implied or otherwise). If you successfully bid for a *Lot* and buy it, at that stage *Bonhams* does enter into an agreement with the *Buyer*. The terms of that contract are set out in our *Buyer’s Agreement*, which you will find at Appendix 2 at the back of the *Catalogue*. This will govern *Bonhams’* relationship with the *Buyer*.

2. LOTS

Subject to the *Contractual Description* printed in bold letters in the *Entry* about the *Lot* in the *Catalogue* (see paragraph 3 below), *Lots* are sold to the *Buyer* on an “as is” basis, with all faults and imperfections. Illustrations and photographs contained in the *Catalogue* (other than photographs forming part of the *Contractual Description*) or elsewhere of any *Lots* are for identification purposes only. They may not reveal the true condition of the *Lot*. A photograph or illustration may not reflect an accurate reproduction of the colour(s) of the *Lot*. *Lots* are available for inspection prior to the *Sale* and it is for you to satisfy yourself as to each and every aspect of a *Lot*, including its authorship, attribution, condition, provenance, history, background, authenticity, style, period, age, suitability, quality, roadworthiness (if relevant), origin, value and estimated selling price (including the *Hammer Price*). It is your responsibility to examine any *Lot* in which you are interested. It should be remembered that the actual condition of a *Lot* may not be as good as that indicated by its outward appearance. In particular, parts may have been replaced or renewed and *Lots* may not be authentic or of satisfactory quality; the inside of a *Lot* may not be visible and may not be original or may be damaged, as for example where it is covered by upholstery or material. Given the age of many *Lots* they may have been damaged and/or repaired and you should not assume that a *Lot* is in good condition. Electronic or mechanical parts may not operate or may not comply with current statutory requirements. You should not assume that electrical items designed to operate on mains electricity will be suitable for connection to the mains electricity supply and you should obtain a report from

a qualified electrician on their status before doing so. Such items which are unsuitable for connection are sold as items of interest for display purposes only. If you yourself do not have expertise regarding a *Lot*, you should consult someone who does to advise you. We can assist in arranging facilities for you to carry out or have carried out more detailed inspections and tests. Please ask our staff for details.

Any person who damages a *Lot* will be held liable for the loss caused.

3. DESCRIPTIONS OF LOTS AND ESTIMATES

Contractual Description of a Lot

The *Catalogue* contains an *Entry* about each *Lot*. Each *Lot* is sold by its respective *Seller* to the *Buyer* of the *Lot* as corresponding only with that part of the *Entry* which is printed in bold letters and (except for the colour, which may be inaccurately reproduced) with any photograph of the *Lot* in the *Catalogue*. The remainder of the *Entry*, which is not printed in bold letters, represents *Bonhams’* opinion (given on behalf of the *Seller*) about the *Lot* only and is not part of the *Contractual Description* in accordance with which the *Lot* is sold by the *Seller*.

Estimates

In most cases, an *Estimate* is printed beside the *Entry*. *Estimates* are only an expression of *Bonhams’* opinion made on behalf of the *Seller* of the range where *Bonhams* thinks the *Hammer Price* for the *Lot* is likely to fall; it is not an *Estimate* of value. It does not take into account any VAT or *Buyer’s Premium* payable. *Lots* can in fact sell for *Hammer Prices* below and above the *Estimate*. Any *Estimate* should not be relied on as an indication of the actual selling price or value of a *Lot*. *Estimates* are in the currency of the *Sale*.

Condition Reports

In respect of most *Lots*, you may ask for a *Condition Report* on its physical condition from *Bonhams*. If you do so, this will be provided by *Bonhams* on behalf of the *Seller* free of charge. *Bonhams* is not entering into a contract with you in respect of the *Condition Report* and accordingly does not assume responsibility to you in respect of it. Nor does the *Seller* owe or agree to owe you as a *Bidder* any obligation or duty in respect of this free report about a *Lot*, which is available for your own inspection or for inspection by an expert instructed by you. However, any written *Description* of the physical condition of the *Lot* contained in a *Condition Report* will form part of the *Contractual Description* of the *Lot* under which it is sold to any *Buyer*.

The Seller’s responsibility to you

The *Seller* does not make or agree to make any representation of fact or contractual promise, *Guarantee* or warranty and undertakes no obligation or duty, whether in contract or in tort (other than to the eventual *Buyer* as set out above), in respect of the accuracy or completeness of any statement or representation made by him or on his behalf, which is in any way descriptive of any *Lot* or as to the anticipated or likely selling price of any *Lot*. Other than as set out above, no statement or representation in any way descriptive of a *Lot* or any *Estimate* is incorporated into any *Contract for Sale* between a *Seller* and a *Buyer*.

Bonhams’ responsibility to you

You have the opportunity of examining the *Lot* if you want to and the *Contract for Sale* for a *Lot* is with the *Seller* and not with *Bonhams*; *Bonhams* acts as the *Seller’s* agent only (unless *Bonhams* sells the *Lot* as principal).

Bonhams undertakes no obligation to you to examine, investigate or carry out any tests, either in sufficient depth or at all, on each *Lot* to establish the accuracy or otherwise of any *Descriptions* or opinions given by *Bonhams*, or by any person on *Bonhams’* behalf, whether in the *Catalogue* or elsewhere.

You should not suppose that such examinations, investigations or tests have occurred.

Bonhams does not make or agree to make any representation of fact, and undertakes no obligation or duty (whether in contract or tort) in respect of the accuracy or completeness of any statement or representation made by *Bonhams* or on

Bonhams’ behalf which is in any way descriptive of any *Lot* or as to the anticipated or likely selling price of any *Lot*. No statement or representation by *Bonhams* or on its behalf in any way descriptive of any *Lot* or any *Estimate* is incorporated into our *Buyer’s Agreement*.

Alterations

Descriptions and *Estimates* may be amended at *Bonhams’* discretion from time to time by notice given orally or in writing before or during a *Sale*.

THE *LOT* IS AVAILABLE FOR INSPECTION AND YOU MUST FORM YOUR OWN OPINION IN RELATION TO IT. YOU ARE STRONGLY ADVISED TO EXAMINE ANY *LOT* OR HAVE IT EXAMINED ON YOUR BEHALF BEFORE THE *SALE*.

4. CONDUCT OF THE SALE

Our *Sales* are public auctions which persons may attend and you should take the opportunity to do so. We do reserve the right at our sole discretion to refuse admission to our premises or to any *Sale* without stating a reason. We have complete discretion as to whether the *Sale* proceeds, whether any *Lot* is included in the *Sale*, the manner in which the *Sale* is conducted and we may offer *Lots* for *Sale* in any order we choose notwithstanding the numbers given to *Lots* in the *Catalogue*. You should therefore check the date and starting time of the *Sale*, whether there have been any withdrawals or late entries. Remember that withdrawals and late entries may affect the time at which a *Lot* you are interested in is put up for *Sale*. We have complete discretion to refuse any bid, to nominate any bidding increment we consider appropriate, to divide any *Lot*, to combine two or more *Lots*, to withdraw any *Lot* from a *Sale* and, before the *Sale* has been closed, to put up any *Lot* for auction again. Auction speeds can exceed 100 *Lots* to the hour and bidding increments are generally about 10%. However these do vary from *Sale* to *Sale* and from *Auctioneer* to *Auctioneer*. Please check with the department organising the *Sale* for advice on this. Where a *Reserve* has been applied to a *Lot*, the *Auctioneer* may, in his absolute discretion, place bids (up to an amount not equalling or exceeding such *Reserve*) on behalf of the *Seller*. We are not responsible to you in respect of the presence or absence of any *Reserve* in respect of any *Lot*. If there is a *Reserve* it will normally be no higher than the lower figure for any *Estimate* in the *Catalogue*, assuming that the currency of the *Reserve* has not fluctuated adversely against the currency of the *Estimate*. The *Buyer* will be the *Bidder* who makes the highest bid acceptable to the *Auctioneer* for any *Lot* (subject to any applicable *Reserve*) to whom the *Lot* is knocked down by the *Auctioneer* at the fall of the *Auctioneer’s* hammer. Any dispute as to the highest acceptable bid will be settled by the *Auctioneer* in his absolute discretion. All bids tendered will relate to the actual *Lot* number announced by the *Auctioneer*. An electronic currency converter may be used at the *Sale*. This equipment is provided as a general guide as to the equivalent amount in certain currencies of a given bid. We do not accept any responsibility for any errors which may occur in the use of the currency converter. We may use video cameras to record the *Sale* and may record telephone calls for reasons of security and to assist in solving any disputes which may arise in relation to bids made at the *Sale*. At some *Sales*, for example, jewellery *Sales*, we may use screens on which images of the *Lots* will be projected. This service is provided to assist viewing at the *Sale*. The image on the screen should be treated as an indication only of the current *Lot*. It should be noted that all bids tendered will relate to the actual *Lot* number announced by the *Auctioneer*. We do not accept any responsibility for any errors which may occur in the use of the screen.

5. BIDDING

We do not accept bids from any person who has not completed and delivered to us one of our *Bidding Forms*, either our *Bidder* Registration Form, *Absentee Bidding Form* or *Telephone Bidding Form*. You will be asked for proof of identity, residence and references, which, when asked for, you must supply if your bids are to be accepted by us. Please bring your passport, driving licence (or similar photographic proof of identity) and proof of address. We may request a deposit from you before allowing you to bid. We may refuse entry to a *Sale* to any person even if that person has completed a *Bidding Form*.

Bidding in person

You should come to our *Bidder* registration desk at the *Sale* venue and fill out a *Bidder* Registration Form on (or, if possible, before) the day of the *Sale*. The bidding number system is sometimes referred to as “paddle bidding”. You will be issued with a large card (a “paddle”) with a printed number on it. This will be attributed to you for the purposes of the *Sale*. Should you be a successful *Bidder* you will need to ensure that your number can be clearly seen by the *Auctioneer* and that it is your number which is identified as the *Buyer’s*. You should not let anyone else use your paddle as all *Lots* will be invoiced to the name and address given on your *Bidder* Registration Form. Once an invoice is issued it will not be changed. If there is any doubt as to the *Hammer Price* of, or whether you are the successful *Bidder* of, a particular *Lot*, you must draw this to the attention of the *Auctioneer* before the next *Lot* is offered for *Sale*. At the end of the *Sale*, or when you have finished bidding please return your paddle to the *Bidder* registration desk.

Bidding by telephone (only available on lots with a low estimate greater than £400)

If you wish to bid at the *Sale* by telephone, please complete a Telephone *Bidding Form*, which is available from our offices or in the *Catalogue*. Please then return it to the office responsible for the *Sale* at least 24 hours in advance of the *Sale*. It is your responsibility to check with our Bids Office that your bid has been received. Telephone calls will be recorded. The telephone bidding facility is a discretionary service and may not be available in relation to all *Lots*. We will not be responsible for bidding on your behalf if you are unavailable at the time of the *Sale* or if the telephone connection is interrupted during bidding. Please contact us for further details.

Bidding by post or fax

Absentee *Bidding Forms* can be found in the back of this *Catalogue* and should be completed and sent to the office responsible for the *Sale*. It is in your interests to return your form as soon as possible, as if two or more *Bidders* submit identical bids for a *Lot*, the first bid received takes preference. In any event, all bids should be received at least 24 hours before the start of the *Sale*. Please check your Absentee *Bidding Form* carefully before returning it to us, fully completed and signed by you. It is your responsibility to check with our Bids Office that your bid has been received. This additional service is complimentary and is confidential. Such bids are made at your own risk and we cannot accept liability for our failure to receive and/or place any such bids. All bids made on your behalf will be made at the lowest level possible subject to *Reserves* and other bids made for the *Lot*. Where appropriate your bids will be rounded down to the nearest amount consistent with the *Auctioneer’s* bidding increments. New *Bidders* must also provide proof of identity and address when submitting bids. Failure to do this will result in your bid not being placed.

Bidding via the internet

Please visit our *Website* at <http://www.bonhams.com> for details of how to bid via the internet.

Bidding through an agent

Bids will be accepted as placed on behalf of the person named as the principal on the *Bidding Form* although we may refuse to accept bids from an agent on behalf of a principal and will require written confirmation from the principal confirming the agent’s authority to bid. Nevertheless, as the *Bidding Form* explains, any person placing a bid as agent on behalf of another (whether or not he has disclosed that fact or the identity of his principal) will be jointly and severally liable with the principal to the *Seller* and to *Bonhams* under any contract resulting from the acceptance of a bid. Subject to the above, please let us know if you are acting on behalf of another person when bidding for *Lots* at the *Sale*.

Equally, please let us know if you intend to nominate another person to bid on your behalf at the *Sale* unless this is to be carried out by us pursuant to a Telephone or Absentee *Bidding Form* that you have completed. If we do not approve the agency arrangements in writing before the *Sale*, we are entitled to assume that the person bidding at the *Sale* is bidding on his own behalf. Accordingly, the person bidding at the *Sale* will be the *Buyer* and will be liable to pay the *Hammer Price* and *Buyer’s Premium* and associated charges. If we approve the

identity of your client in advance, we will be in a position to address the invoice to your principal rather than you. We will require proof of the agent’s client’s identity and residence in advance of any bids made by the agent on his behalf. Please refer to our *Conditions of Business* and contact our Customer Services Department for further details.

6. CONTRACTS BETWEEN THE BUYER AND SELLER AND THE BUYER AND BONHAMS

On the *Lot* being knocked down to the *Buyer*, a *Contract for Sale* of the *Lot* will be entered into between the *Seller* and the *Buyer* on the terms of the *Contract for Sale* set out in Appendix 1 at the back of the *Catalogue*. You will be liable to pay the *Purchase Price*, which is the *Hammer Price* plus any applicable *VAT*. At the same time, a separate contract is also entered into between us as *Auctioneers* and the *Buyer*. This is our *Buyer’s Agreement*, the terms of which are set out in Appendix 2 at the back of the *Catalogue*. Please read the terms of the *Contract for Sale* and our *Buyer’s Agreement* contained in the *Catalogue* in case you are the successful *Bidder*. We may change the terms of either or both of these agreements in advance of their being entered into, by setting out different terms in the *Catalogue* and/or by placing an insert in the *Catalogue* and/or by notices at the *Sale* venue and/or by oral announcements before and during the *Sale*. You should be alert to this possibility of changes and ask if there have been any.

7. BUYER’S PREMIUM AND OTHER CHARGES PAYABLE BY THE BUYER

Under the *Buyer’s Agreement*, a premium (the *Buyer’s Premium*) is payable to us by the *Buyer* in accordance with the terms of the *Buyer’s Agreement* and at rates set out below, calculated by reference to the *Hammer Price* and payable in addition to it. Storage charges and *Expenses* are also payable by the *Buyer* as set out in the *Buyer’s Agreement*. All the sums payable to us by the *Buyer* are subject to *VAT*. For this *Sale* the following rates of *Buyer’s Premium* will be payable by *Buyers* of *Lots*:

25% up to £25,000 of the <i>Hammer Price</i>
20% from £25,001 of the <i>Hammer Price</i>
12% from £500,001 of the <i>Hammer Price</i>

On certain *Lots*, which will be marked “AR” in the *Catalogue* and which are sold for a *Hammer Price* of €1,000 or greater (converted into the currency of the *Sale* using the European Central Bank Reference rate prevailing on the date of the *Sale*), the *Additional Premium* will be payable to us by the *Buyer* to cover our *Expenses* relating to the payment of royalties under the Artists Resale Right Regulations 2006. The *Additional Premium* will be a percentage of the amount of the *Hammer Price* calculated in accordance with the table below, and shall not exceed €12,500 (converted into the currency of the *Sale* using the European Central Bank Reference rate prevailing on the date of the *Sale*).

<i>Hammer Price</i>	Percentage amount
From €0 to €50,000	4%
From €50,000.01 to €200,000	3%
From €200,000.01 to €350,000	1%
From €350,000.01 to €500,000	0.5%
Exceeding €500,000	0.25%

8. VAT

The prevailing rate of *VAT* at the time of going to press is 20%, but this is subject to government change and the rate payable will be the rate in force on the date of the *Sale*.

The following symbols are used to denote that *VAT* is due on the *Hammer Price* and *Buyer’s Premium*:

- † *VAT* at the prevailing rate on *Hammer Price* and *Buyer’s Premium*
- Ω *VAT* on imported items at the prevailing rate on *Hammer Price* and *Buyer’s Premium*
- * *VAT* on imported items at a preferential rate of 5% on *Hammer Price* and the prevailing rate on *Buyer’s Premium*

- G Gold bullion exempt from *VAT* on the *Hammer Price* and subject to *VAT* at the prevailing rate on the *Buyer’s Premium*
- Zero rated for *VAT*, no *VAT* will be added to the *Hammer Price* or the *Buyer’s Premium*
- α *Buyers* from within the EU: *VAT* is payable at the prevailing rate on just the *Buyer’s Premium* (NOT the *Hammer Price*)
- § *Buyers* from outside the EU: *VAT* is payable at the prevailing rate on both *Hammer Price* and *Buyer’s Premium*. If a *Buyer*, having registered under a non-EU address, decides that the item is not to be exported from the EU, then he should advise *Bonhams* immediately.

In all other instances no *VAT* will be charged on the *Hammer Price*, but *VAT* at the prevailing rate will be added to *Buyer’s Premium* which will be invoiced on a *VAT* inclusive basis.

9. PAYMENT

It is of critical importance that you ensure that you have readily available funds to pay the *Purchase Price* and the *Buyer’s Premium* (plus *VAT* and any other charges and *Expenses* to us) in full before making a bid for the *Lot*. If you are a successful *Bidder*, payment will be due to us by 4.30 pm on the second working day after the *Sale* so that all sums are cleared by the eighth working day after the *Sale*. Unless agreed by us in advance payments made by anyone other than the registered *Buyer* will not be accepted. Payment will have to be by one of the following methods (all cheques should be made payable to Bonhams 1793 Limited). *Bonhams* reserves the right to vary the terms of payment at any time.

Sterling personal cheque drawn on a UK branch of a bank or building society: all cheques must be cleared before you can collect your purchases;

Bankers draft/building society cheque: if you can provide suitable proof of identity and we are satisfied as to the genuineness of the draft or cheque, we will allow you to collect your purchases immediately;

Cash: you may pay for *Lots* purchased by you at this *Sale* with notes, coins or travellers cheques in the currency in which the *Sale* is conducted (but not any other currency) provided that the total amount payable by you in respect of all *Lots* purchased by you at the *Sale* does not exceed £5,000, or the equivalent in the currency in which the *Sale* is conducted, at the time when payment is made. If the amount payable by you for *Lots* exceeds that sum, the balance must be paid otherwise than in coins, notes or travellers cheques;

Sterling travellers cheques: you may pay for *Lots* purchased by you at this *Sale* with travellers cheques, provided the total amount payable by you in respect of all *Lots* purchased by you at the *Sale* does not exceed £5,000. We will need to see your passport if you wish to pay using travellers cheques;

Bank transfer: you may electronically transfer funds to our *Trust Account*. If you do so, please quote your paddle number and invoice number as the reference. Our *Trust Account* details are as follows:

Bank: National Westminster Bank Plc
Address: PO Box 4RY
250 Regent Street
London W1A 4RY
Account Name: Bonhams 1793 Limited Trust Account
Account Number: 25563009
Sort Code: 56-00-27
IBAN Number: GB 33 NWBK 560027 25563009

If paying by bank transfer, the amount received after the deduction of any bank fees and/or conversion of the currency of payment to pounds sterling must not be less than the sterling amount payable, as set out on the invoice.

Debit cards: there is no additional charge for purchases made with personal debit cards, issued by a UK bank. Debit cards issued by an overseas bank, deferred and company debit cards and all credit cards will be subject to a 3% surcharge;

Union Pay cards: these are now accepted at our Knightsbridge and New Bond Street offices, when presented in person by the card holder. These cards are subject to a 3% surcharge.

Credit cards: Visa and Mastercard only. Please note there is a 3% surcharge on the total invoice value when payments are made using credit cards. It may be advisable to notify your card provider of your intended purchase in advance to reduce delays caused by us having to seek authority when you come to pay. If you have any questions with regard to payment, please contact our Customer Services Department.

10. COLLECTION AND STORAGE

The *Buyer* of a *Lot* will not be allowed to collect it until payment in full and in cleared funds has been made (unless we have made a special arrangement with the *Buyer*). For collection and removal of purchased *Lots*, please refer to *Sale* Information at the front of the *Catalogue*. Our offices are open 9.00am – 5pm Monday to Friday. Details relating to the collection of a *Lot*, the storage of a *Lot* and our *Storage Contractor* after the *Sale* are set out in the *Catalogue*.

11. SHIPPING

Please refer all enquiries to our shipping department on:
Tel: +44 (0)20 7468 8353/8302 Fax: +44 (0)20 7629 9673
Email: shipping@bonhams.com

12. EXPORT/TRADE RESTRICTIONS

It is your sole responsibility to comply with all export and import regulations relating to your purchases and also to obtain any relevant export and/or import licence(s). Export licences are issued by Arts Council England and application forms can be obtained from its Export Licensing Unit. The detailed provisions of the export licensing arrangements can be found on the ACE website <http://www.artscouncil.org.uk/about-us/museums-and-libraries/cultural-property/export-controls/export-licensing/> or by phoning ACE on +44 (0)20 7973 5228. The need for import licences varies from country to country and you should acquaint yourself with all relevant local requirements and provisions. The refusal of any import or export licence(s) or any delay in obtaining such licence(s) shall not permit the rescission of any *Sale* nor allow any delay in making full payment for the *Lot*. Generally, please contact our shipping department before the *Sale* if you require assistance in relation to export regulations.

13. CITES REGULATIONS

Please be aware that all *Lots* marked with the symbol Y are subject to CITES regulations when exporting these items outside the EU. These regulations may be found at <http://animalhealth.defra.gov.uk/cites/> or may be requested from:

DEFRA, Wildlife Licensing and Registration Service
Floor 1, Zone 17, Temple Quay House
2 The Square, Temple Quay
BRISTOL BS1 6EB

14. THE SELLERS AND/OR BONHAMS' LIABILITY

Other than any liability of the *Seller* to the *Buyer* of a *Lot* under the *Contract for Sale*, neither we nor the *Seller* are liable (whether in negligence or otherwise) for any error or misdescription or omission in any *Description* of a *Lot* or any *Estimate* in respect of it, whether contained in the *Catalogue* or otherwise, whether given orally or in writing and whether given before or during the *Sale*. Neither we nor the *Seller* will be liable for any loss of *Business*, profits, revenue or income, or for loss of reputation, or for disruption to *Business* or wasted time on the part of management or staff, or for indirect losses or consequential damages of any kind, irrespective in any case of the nature, volume or source of the loss or damage alleged to be suffered, and irrespective of whether the said loss or damage is caused by or claimed in respect of any negligence, other tort, breach of contract (if any) or statutory duty, restitutionary claim or otherwise. In any circumstances where we and/or the *Seller* are liable in relation to any *Lot* or any *Description* or *Estimate* made of any *Lot*, or the conduct of any *Sale* in relation to any *Lot*, whether in damages, for an

indemnity or contribution, or for a restitutionary remedy or otherwise, our and/or the *Seller's* liability (combined, if both we and the *Seller* are liable) will be limited to payment of a sum which will not exceed by way of maximum the amount of the *Purchase Price* of the *Lot* irrespective in any case of the nature, volume or source of any loss or damage alleged to be suffered or sum claimed as due, and irrespective of whether the liability arises from any negligence, other tort, breach of contract (if any) or statutory duty or otherwise. Nothing set out above will be construed as excluding or restricting (whether directly or indirectly) our liability or excluding or restricting any person's rights or remedies in respect of (i) fraud, or (ii) death or personal injury caused by our negligence (or by the negligence of any person under our control or for whom we are legally responsible), or (iii) acts or omissions for which we are liable under the Occupiers Liability Act 1957, or (iv) any other liability to the extent the same may not be excluded or restricted as a matter of law or (v) our undertakings under paragraphs 9 (in relation to specialist *Stamp* or *Book Sales* only) and 10 of the *Buyer's Agreement*. The same applies in respect of the *Seller*, as if references to us in this paragraph were substituted with references to the *Seller*.

15. BOOKS

As stated above, all *Lots* are sold on an "as is" basis, subject to all faults, imperfections and errors of *Description* save as set out below. However, you will be entitled to reject a *Book* in the circumstances set out in paragraph 10 of the *Buyers Agreement*. Please note that *Lots* comprising printed *Books*, unframed maps and bound manuscripts are not liable to VAT on the *Buyer's Premium*.

16. CLOCKS AND WATCHES

All *Lots* are sold "as is", and the absence of any reference to the condition of a clock or watch does not imply that the *Lot* is in good condition and without defects, repairs or restorations. Most clocks and watches have been repaired in the course of their normal lifetime and may now incorporate parts not original to them. Furthermore, *Bonhams* makes no representation or warranty that any clock or watch is in working order. As clocks and watches often contain fine and complex mechanisms, *Bidders* should be aware that a general service, change of battery or further repair work, for which the *Buyer* is solely responsible, may be necessary. *Bidders* should be aware that the importation of watches such as Rolex, Frank Muller and Corum into the United States is highly restricted. These watches may not be shipped to the USA and can only be imported personally.

17. FIREARMS – PROOF, CONDITION AND CERTIFICATION

Proof of Firearms

The term "proof exemption" indicates that a firearm has been examined at a Proof House, but not proved, as either (a) it was deemed of interest and not intended for use, or (b) ammunition was not available. In either case, the firearm must be regarded as unsafe to fire unless subsequently proved. Firearms proved for Black Powder should not be used with smokeless ammunition.

The term "Certificate of Unprovability" indicates that a firearm has been examined at a Proof House and is deemed both unsuitable for proof and use. Reproof is required before any such firearm is to be used.

Guns Sold as Parts

Barrels of guns sold as parts will only be made available for sleeving and measurements once rendered unserviceable according to the Gun Barrel Proof Act of 1968 to 1978 and the Rules of Proof.

Condition of Firearms

Comment in this *Catalogue* is restricted, in general, to exceptional condition and to those defects that might affect the immediate safety of a firearm in normal use. An intending *Bidder* unable to make technical examinations and assessments is recommended to seek advice from a gunmaker or from a modern firearms specialist. All prospective *Bidders* are advised to consult the ° of bore and wall-thickness measurements

posted in the saleroom and available from the department. *Bidders* should note that guns are stripped only where there is a strong indication of a mechanical malfunction. Stripping is not, otherwise, undertaken. Guns intended for use should be stripped and cleaned beforehand. Hammer guns should have their rebound mechanisms checked before use. The safety mechanisms of all guns must be tested before use. All measurements are approximate.

Original Gun Specifications Derived from Gunmakers

The Sporting Gun Department endeavours to confirm a gun's original specification and date of manufacture with makers who hold their original records.

Licensing Requirements Firearms Act 1968 as amended

Bonhams is constantly reviewing its procedures and would remind you that, in the case of firearms or shotguns subject to certification, to conform with current legislation, *Bonhams* is required to see, as appropriate, your original registered firearms dealer's certificate / shot gun certificate / firearm certificate / museum firearms licence / Section 5 authority or import licence (or details of any exemption from which you may benefit, for instance Crown servant status) for the firearm(s) you have purchased prior to taking full payment of the amount shown on your invoice. Should you not already be in possession of such an authority or exemption, you are required to initially pay a deposit of 95% of the total invoice with the balance of 5% payable on presentation of your valid certificate or licence showing your authority to hold the firearm(s) concerned.

Please be advised that if a successful *Bidder* is then unable to produce the correct paperwork, the *Lot(s)* will be reoffered by *Bonhams* in the next appropriate *Sale*, on standard terms for *Sellers*, and you will be responsible for any loss incurred by *Bonhams* on the original *Sale* to you.

In the case of RFD certificates and Section 5 authorities, we wish to keep an up-to-date copy on file. Please supply us with a Fax or photocopy. It would be helpful if you could send us an updated copy whenever your certificate or authority is renewed or changed.

Lots marked 'S1' and bearing red labels are Section 1 firearms and require a valid British Firearms certificate, RFD Licence or import licence.

Lots marked 'S2' and bearing blue labels are Section 2 firearms and require a valid British Shotgun certificate, RFD licence or import licence.

Lots marked 'S5' and bearing specially marked red labels are Section 5 prohibited firearms and require a valid Section 5 Authority or import licence.

Lots marked with a 'S58' and bearing yellow labels are for obsolete calibres and no licence is required unless ammunition is held.

Unmarked *Lots* require no licence.

Please do not hesitate to contact the Modern Sporting Gun Department should you have any queries.

Taxidermy and Related Items

As a *Seller* of these articles, *Bonhams* undertakes to comply fully with Cites and DEFRA regulations. *Buyers* are advised to inform themselves of all such regulations and should expect the exportation of items to take some time to arrange.

18. FURNITURE

Upholstered Furniture

Whilst we take every care in cataloguing furniture which has been upholstered we offer no *Guarantee* as to the originality of the wood covered by fabric or upholstery.

19. JEWELLERY

~ Ruby and Jadeite

Ruby and jadeite gemstones of Burmese (Myanmar) origin may not be imported into the US. Rubies and jadeite of non-Burmese origin require certification before import into the US and it is the *Buyer's* responsibility to obtain all relevant and required export/import licences, certificates and documentation before shipping. Failure by the *Buyer* to successfully import goods into the US does not constitute grounds for non payment or cancellation of *Sale*. *Bonhams* will not be responsible for any additional costs in this regard howsoever incurred.

Gemstones

Historically many gemstones have been subjected to a variety of treatments to enhance their appearance. Sapphires and rubies are routinely heat treated to improve their colour and clarity, similarly emeralds are frequently treated with oils or resin for the same purpose. Other treatments such as staining, irradiation or coating may have been used on other gemstones. These treatments may be permanent, whilst others may need special care or re-treatment over the years to retain their appearance. *Bidders* should be aware that *Estimates* assume that gemstones may have been subjected to such treatments. A number of laboratories issue certificates that give more detailed *Descriptions* of gemstones. However there may not be consensus between different laboratories on the degrees, or types of treatment for any particular gemstone. In the event that *Bonhams* has been given or has obtained certificates for any *Lot* in the *Sale* these certificates will be disclosed in the *Catalogue*. Although, as a matter of policy, *Bonhams* endeavours to provide certificates from recognised laboratories for certain gemstones, it is not feasible to obtain certificates for each *Lot*. In the event that no certificate is published in the *Catalogue*, *Bidders* should assume that the gemstones may have been treated. Neither *Bonhams* nor the *Seller* accepts any liability for contradictions or differing certificates obtained by *Buyers* on any *Lots* subsequent to the *Sale*.

Estimated Weights

If a stone(s) weight appears within the body of the *Description* in capital letters, the stone(s) has been unmounted and weighed by *Bonhams*. If the weight of the stone(s) is stated to be approximate and does not appear in capital letters, the stone(s) has been assessed by us within its/their settings, and the stated weight is a statement of our opinion only. This information is given as a guide and *Bidders* should satisfy themselves with regard to this information as to its accuracy.

Signatures

1. A diamond brooch, by Kutchinsky

When the maker's name appears in the title, in *Bonhams'* opinion the piece is by that maker.

2. A diamond brooch, signed Kutchinsky

Has a signature that, in *Bonhams'* opinion, is authentic but may contain gemstones that are not original, or the piece may have been altered.

3. A diamond brooch, mounted by Kutchinsky

Has been created by the jeweller, in *Bonhams'* opinion, but using stones or designs supplied by the client.

20. PHOTOGRAPHS

Explanation of Catalogue Terms

- "Bill Brandt": in our opinion a work by the artist.
- "Attributed to Bill Brandt": in our opinion probably a work by the artist, but less certainty to authorship is expressed than in the preceding category.
- "Signed and/or titled and/or dated and/or inscribed": in our opinion the signature and/or title and/or date and/or inscription are in the artist's hand.
- "Signed and/or titled and/or dated and/or inscribed in another hand": in our opinion the signature and/or title and/or date and/or inscription have been added by another hand.

- The date given is that of the image (negative). Where no further date is given, this indicates that the photographic print is vintage (the term "vintage" may also be included in the *Lot Description*). A vintage photograph is one which was made within approximately 5-10 years of the negative. Where a second, later date appears, this refers to the date of printing. Where the exact printing date is not known, but understood to be later, "printed later" will appear in the *Lot Description*.
- Unless otherwise specified, dimensions given are those of the piece of paper on which the image is printed, including any margins. Some photographs may appear in the *Catalogue* without margins illustrated.
- All photographs are sold unframed unless stated in the *Lot Description*.

21. PICTURES

Explanation of Catalogue Terms

The following terms used in the *Catalogue* have the following meanings but are subject to the general provisions relating to *Descriptions* contained in the *Contract for Sale*:

- "Jacopo Bassano": in our opinion a work by the artist. When the artist's forename(s) is not known, a series of asterisks, followed by the surname of the artist, whether preceded by an initial or not, indicates that in our opinion the work is by the artist named;
- "Attributed to Jacopo Bassano": in our opinion probably a work by the artist but less certainty as to authorship is expressed than in the preceding category;
- "Studio/Workshop of Jacopo Bassano": in our opinion a work by an unknown hand in a studio of the artist which may or may not have been executed under the artist's direction;
- "Circle of Jacopo Bassano": in our opinion a work by a hand closely associated with a named artist but not necessarily his pupil;
- "Follower of Jacopo Bassano": in our opinion a work by a painter working in the artist's style, contemporary or nearly contemporary, but not necessarily his pupil;
- "Manner of Jacopo Bassano": in our opinion a work in the style of the artist and of a later date;
- "After Jacopo Bassano": in our opinion, a copy of a known work of the artist;
- "Signed and/or dated and/or inscribed": in our opinion the signature and/or date and/or inscription are from the hand of the artist;
- "Bears a signature and/or date and/or inscription": in our opinion the signature and/or date and/or inscription have been added by another hand.

22. PORCELAIN AND GLASS

Damage and Restoration

For your guidance, in our *Catalogues* we detail, as far as practicable, recorded all significant defects, cracks and restoration. Such practicable *Descriptions* of damage cannot be definitive, and in providing *Condition Reports*, we cannot *Guarantee* that there are no other defects present which have not been mentioned. *Bidders* should satisfy themselves by inspection, as to the condition of each *Lot*. Please see the *Contract for Sale* printed in this *Catalogue*. Because of the difficulty in determining whether an item of glass has been repolished, in our *Catalogues* reference is only made to visible chips and cracks. No mention is made of repolishing, severe or otherwise.

23. VEHICLES

The Veteran Car Club of Great Britain

Dating Plates and Certificates

When mention is made of a Veteran Car Club Dating Plate or Dating Certificate in this *Catalogue*, it should be borne in mind that the Veteran Car Club of Great Britain using the services of Veteran Car Company Ltd, does from time to time, review cars already dated and, in some instances, where fresh evidence becomes available, the review can result in an alteration of date. Whilst the Club and Veteran Car Company Ltd make every effort to ensure accuracy, the date shown on the Dating Plate or Dating Certificate cannot be guaranteed as correct and intending purchasers should make their own enquiries as to the date of the car.

24. WINE

Lots which are lying under Bond and those liable to VAT may not be available for immediate collection.

Examining the wines

It is occasionally possible to provide a pre-Sale tasting for larger parcels (as defined below). This is generally limited to more recent and everyday drinking wines. Please contact the department for details.

It is not our policy to inspect every unopened case. In the case of wines older than 20 years the boxes will usually have been opened and levels and appearance noted in the *Catalogue* where necessary. You should make proper allowance for variations in ullage levels and conditions of corks, capsules and labels.

Corks and Ullages

Ullage refers to the space between the base of the cork and the wine. Ullage levels for Bordeaux shaped bottles are only normally noted when below the neck and for Burgundy, Alsace, German and Cognac shaped bottles when greater than 4 centimetres (cm). Acceptable ullage levels increase with age; generally acceptable levels are as follows:

Under 15 years old – into neck or less than 4cm
15 to 30 years old – top shoulder (ts) or up to 5cm
Over 30 years old – high shoulder (hs) or up to 6cm

It should be noted that ullages may change between publication of the *Catalogue* and the *Sale* and that corks may fail as a result of transporting the wine. We will only accept responsibility for *Descriptions* of condition at the time of publication of the *Catalogue* and cannot accept responsibility for any loss resulting from failure of corks either before or after this point.

Options to buy parcels

A parcel is a number of *Lots* of identical size of the same wine, bottle size and *Description*. The *Buyer* of any of these *Lots* has the option to accept some or all of the remaining *Lots* in the parcel at the same price, although such options will be at the *Auctioneer's* sole discretion. Absentee *Bidders* are, therefore, advised to bid on the first *Lot* in a parcel.

Wines in Bond

Wines lying in Bond are marked Δ and VAT is payable by the purchaser, at the standard rate, on the *Hammer Price*, unless the wines are to remain under Bond. *Buyers* requiring their wine to remain in Bond must notify *Bonhams* at the time of the *Sale*. The *Buyer* is then himself responsible for all duty, clearance VAT and other charges that may be payable thereon. All such *Lots* must be transferred or collected within two weeks of the *Sale*.

Buyers outside the UK must be aware that any forwarding agent appointed to export their purchases must have a movement certificate for *Lots* to be released under Bond.

Bottling Details and Case Terms

The following terms used in the *Catalogue* have the following meanings:

CB – Château bottled
DB – Domaine bottled
EstB – Estate bottled
BB – Bordeaux bottled
BE – Belgian bottled
FB – French bottled
GB – German bottled
OB – Oporto bottled
UK – United Kingdom bottled
owc – original wooden case
iwc – individual wooden case
oc – original carton

SYMBOLS

THE FOLLOWING SYMBOLS ARE USED TO DENOTE

- Y Subject to CITES regulations when exporting these items outside the EU, see clause 13.
- W Objects displayed with a w will be located in the Bonhams Warehouse and will only be available for collection from this location.
- ≈ Please note that as a result of recent legislation ruby and jadeite gem stones of Burmese (Myanmar) origin may not be imported into the US. Rubies and jadeite of non-Burmese origin require certification before import into the US.
- Δ Wines lying in Bond.
- AR An *Additional Premium* will be payable to us by the *Buyer* to cover our *Expenses* relating to payment of royalties under the Artists Resale Right Regulations 2006. See clause 7 for details.
- The *Seller* has been guaranteed a minimum price for the *Lot*, either by *Bonhams* or a third party. This may take the form of an irrevocable bid by a third party, who may make a financial gain on a successful *Sale* or a financial loss if unsuccessful.
- ▲ *Bonhams* owns the *Lot* either wholly or partially or may otherwise have an economic interest.

•, †, *, G, Ω, α, § see clause 8, VAT, for details.

DATA PROTECTION – USE OF YOUR INFORMATION

Where we obtain any personal information about you, we shall only use it in accordance with the terms of our Privacy Policy (subject to any additional specific consent(s) you may have given at the time your information was disclosed). A copy of our Privacy Policy can be found on our Website www.bonhams.com or requested by post from Customer Services Department, 101 New Bond Street, London, W1S 1SR or by email from info@bonhams.com

APPENDIX 1

CONTRACT FOR SALE

IMPORTANT: These terms may be changed in advance of the *Sale* of the *Lot* to you, by the setting out of different terms in the *Catalogue* for the *Sale* and/or by placing an insert in the *Catalogue* and/or by notices at the *Sale* venue and/or by oral announcements before and during the *Sale* at the *Sale* venue. You should be alert to this possibility of changes and ask in advance of bidding if there have been any.

Under this contract the *Seller's* liability in respect of the quality of the *Lot*, its fitness for any purpose and its conformity with any *Description* is limited. You are strongly advised to examine the *Lot* for yourself and/or obtain an independent examination of it before you buy it.

1 THE CONTRACT

- 1.1 These terms govern the *Contract for Sale* of the *Lot* by the *Seller* to the *Buyer*.
- 1.2 The Definitions and Glossary contained in Appendix 3 in the *Catalogue* are incorporated into this *Contract for Sale* and a separate copy can also be provided by *Bonhams* on request. Where words and phrases are used which are in the List of Definitions, they are printed in italics.
- 1.3 The *Seller* sells the *Lot* as the principal to the *Contract for Sale*, such contract being made between the *Seller* and you through *Bonhams* which acts in the sole capacity as the *Seller's* agent and not as an additional principal. However, if the *Catalogue* states that *Bonhams* sells the *Lot* as principal, or such a statement is made by an announcement by the *Auctioneer*, or by a notice at the *Sale*, or an insert in the *Catalogue*, then *Bonhams* is the *Seller* for the purposes of this agreement.
- 1.4 The contract is made on the fall of the *Auctioneer's* hammer in respect of the *Lot* when it is knocked down to you.

SELLER'S UNDERTAKINGS

- 2.1 The *Seller* undertakes to you that:
- 2.1.1 the *Seller* is the owner of the *Lot* or is duly authorised to sell the *Lot* by the owner;
- 2.1.2 save as disclosed in the *Entry* for the *Lot* in the *Catalogue*, the *Seller* sells the *Lot* with full title guarantee or, where the *Seller* is an executor, trustee, liquidator, receiver or administrator, with whatever right, title or interest he may have in the *Lot*;
- 2.1.3 except where the *Sale* is by an executor, trustee, liquidator, receiver or administrator the *Seller* is both legally entitled to sell the *Lot*, and legally capable of conferring on you quiet possession of the *Lot* and that the *Sale* conforms in every respect with the terms implied by the Sale of Goods Act 1979, Sections 12(1) and 12(2) (see the Definitions and Glossary);
- 2.1.4 the *Seller* has complied with all requirements, legal or otherwise, relating to any export or import of the *Lot*, and all duties and taxes in respect of the export or import of the *Lot* have (unless stated to the contrary in the *Catalogue* or announced by the *Auctioneer*) been paid and, so far as the *Seller* is aware, all third parties have complied with such requirements in the past;
- 2.1.5 subject to any alterations expressly identified as such made by announcement or notice at the *Sale* venue or by the *Notice to Bidders* or by an insert in the *Catalogue*, the *Lot* corresponds with the *Contractual Description* of the *Lot*, being that part of the *Entry* about the *Lot* in the *Catalogue* which is in bold letters and (except for colour) with any photograph of the *Lot* in the *Catalogue* and the contents of any *Condition Report* which has been provided to the *Buyer*.

3 DESCRIPTIONS OF THE LOT

- 3.1 Paragraph 2.1.5 sets out what is the *Contractual Description* of the *Lot*. In particular, the *Lot* is not sold as corresponding with that part of the *Entry* in the *Catalogue* which is not printed in bold letters, which merely sets out (on the *Seller's* behalf) *Bonhams'* opinion about the *Lot* and which is not part of the *Contractual Description* upon which the *Lot* is sold. Any statement or representation other than that part of the *Entry* referred to in paragraph 2.1.5 (together with any express alteration to it as referred to in paragraph 2.1.5), including any *Description* or *Estimate*, whether made orally or in writing, including in the *Catalogue* or on *Bonhams' Website*, or by conduct, or otherwise, and whether by or on behalf of the *Seller* or *Bonhams* and whether made prior to or during the *Sale*, is not part of the *Contractual Description* upon which the *Lot* is sold.
- 3.2 Except as provided in paragraph 2.1.5, the *Seller* does not make or give and does not agree to make or give any contractual promise, undertaking, obligation, guarantee, warranty, or representation of fact, or undertake any duty of care, in relation to any *Description* of the *Lot* or any *Estimate* in relation to it, nor of the accuracy or completeness of any *Description* or *Estimate* which may have been made by or on behalf of the *Seller* including by *Bonhams*. No such *Description* or *Estimate* is incorporated into this *Contract for Sale*.

4 FITNESS FOR PURPOSE AND SATISFACTORY QUALITY

- 4.1 The *Seller* does not make and does not agree to make any contractual promise, undertaking, obligation, guarantee, warranty, or representation of fact in relation to the satisfactory quality of the *Lot* or its fitness for any purpose.

- 4.2 The *Seller* will not be liable for any breach of any undertaking, whether implied by the Sale of Goods Act 1979 or otherwise, as to the satisfactory quality of the *Lot* or its fitness for any purpose.

5 RISK, PROPERTY AND TITLE

- 5.1 Risk in the *Lot* passes to you when it is knocked down to you on the fall of the *Auctioneer's* hammer in respect of the *Lot*. The *Seller* will not be responsible thereafter for the *Lot* prior to you collecting it from *Bonhams* or the *Storage Contractor*, with whom you have separate contract(s) as *Buyer*. You will indemnify the *Seller* and keep the *Seller* fully indemnified from and against all claims, proceedings, costs, expenses and losses arising in respect of any injury, loss and damage caused to the *Lot* after the fall of the *Auctioneer's* hammer until you obtain full title to it.
- 5.2 Title to the *Lot* remains in and is retained by the *Seller* until the *Purchase Price* and all other sums payable by you to *Bonhams* in relation to the *Lot* have been paid in full to, and received in cleared funds by, *Bonhams*.

6 PAYMENT

- 6.1 Your obligation to pay the *Purchase Price* arises when the *Lot* is knocked down to you on the fall of the *Auctioneer's* hammer in respect of the *Lot*.
- 6.2 Time will be of the essence in relation to payment of the *Purchase Price* and all other sums payable by you to *Bonhams*. Unless agreed in writing with you by *Bonhams* on the *Seller's* behalf (in which case you must comply with the terms of that agreement), all such sums must be paid to *Bonhams* by you in the currency in which the *Sale* was conducted by not later than 4.30pm on the second working day following the *Sale* and you must ensure that the funds are cleared by the seventh working day after the *Sale*. Payment must be made to *Bonhams* by one of the methods stated in the *Notice to Bidders* unless otherwise agreed with you in writing by *Bonhams*. If you do not pay any sums due in accordance with this paragraph, the *Seller* will have the rights set out in paragraph 8 below.

7 COLLECTION OF THE LOT

- 7.1 Unless otherwise agreed in writing with you by *Bonhams*, the *Lot* will be released to you or to your order only when *Bonhams* has received cleared funds to the amount of the full *Purchase Price* and all other sums owed by you to the *Seller* and to *Bonhams*.
- 7.2 The *Seller* is entitled to withhold possession from you of any other *Lot* he has sold to you at the same or at any other *Sale* and whether currently in *Bonhams'* possession or not until payment in full and in cleared funds of the *Purchase Price* and all other sums due to the *Seller* and/or *Bonhams* in respect of the *Lot*.
- 7.3 You will collect and remove the *Lot* at your own expense from *Bonhams'* custody and/or control or from the *Storage Contractor's* custody in accordance with *Bonhams'* instructions or requirements.
- 7.4 You will be wholly responsible for packing, handling and transport of the *Lot* on collection and for complying with all import or export regulations in connection with the *Lot*.
- 7.5 You will be wholly responsible for any removal, storage or other charges or *Expenses* incurred by the *Seller* if you do not remove the *Lot* in accordance with this paragraph 7 and will indemnify the *Seller* against all charges, costs, including any legal costs and fees, *Expenses* and losses suffered by the *Seller* by reason of your failure to remove the *Lot* including any charges due under any *Storage Contract*. All such sums due to the *Seller* will be payable on demand.

8	FAILURE TO PAY FOR THE LOT		all sums due to the <i>Seller</i> and to <i>Bonhams</i> , within 28 days of receipt of such monies by him or on his behalf.		waiver given to you in writing. Any such waiver will not affect the <i>Seller's</i> ability subsequently to enforce any right arising under the <i>Contract for Sale</i> .
8.1	If the <i>Purchase Price</i> for a <i>Lot</i> is not paid to <i>Bonhams</i> in full in accordance with the <i>Contract for Sale</i> the <i>Seller</i> will be entitled, with the prior written agreement of <i>Bonhams</i> but without further notice to you, to exercise one or more of the following rights (whether through <i>Bonhams</i> or otherwise):	9	THE SELLER'S LIABILITY	10.3	If either party to the <i>Contract for Sale</i> is prevented from performing that party's respective obligations under the <i>Contract for Sale</i> by circumstances beyond its reasonable control or if performance of its obligations would by reason of such circumstances give rise to a significantly increased financial cost to it, that party will not, for so long as such circumstances prevail, be required to perform such obligations. This paragraph does not apply to the obligations imposed on you by paragraph 6.
8.1.1	to terminate immediately the <i>Contract for Sale</i> of the <i>Lot</i> for your breach of contract;	9.1	The <i>Seller</i> will not be liable for any injury, loss or damage caused by the <i>Lot</i> after the fall of the <i>Auctioneer's</i> hammer in respect of the <i>Lot</i> .		
8.1.2	to resell the <i>Lot</i> by auction, private treaty or any other means on giving seven days' written notice to you of the intention to resell;	9.2	Subject to paragraph 9.3 below, except for breach of the express undertaking provided in paragraph 2.1.5, the <i>Seller</i> will not be liable for any breach of any term that the <i>Lot</i> will correspond with any <i>Description</i> applied to it by or on behalf of the <i>Seller</i> , whether implied by the Sale of Goods Act 1979 or otherwise.	10.4	Any notice or other communication to be given under the <i>Contract for Sale</i> must be in writing and may be delivered by hand or sent by first class post or air mail or fax transmission, if to the <i>Seller</i> , addressed <i>c/o Bonhams</i> at its address or fax number in the <i>Catalogue</i> (marked for the attention of the Company Secretary), and if to you to the address or fax number of the <i>Buyer</i> given in the <i>Bidding Form</i> (unless notice of any change of address is given in writing). It is the responsibility of the sender of the notice or communication to ensure that it is received in a legible form within any applicable time period.
8.1.3	to retain possession of the <i>Lot</i> ;				
8.1.4	to remove and store the <i>Lot</i> at your expense;	9.3	Unless the <i>Seller</i> sells the <i>Lot</i> in the course of a <i>Business</i> and the <i>Buyer</i> buys it as a <i>Consumer</i> ,		
8.1.5	to take legal proceedings against you for any sum due under the <i>Contract for Sale</i> and/or damages for breach of contract;	9.3.1	the <i>Seller</i> will not be liable (whether in negligence, other tort, breach of contract or statutory duty or in restitution or under the Misrepresentation Act 1967, or in any other way) for any lack of conformity with, or inaccuracy, error, misdescription or omission in any <i>Description</i> of the <i>Lot</i> or any <i>Entry</i> or <i>Estimate</i> in relation to the <i>Lot</i> made by or on behalf of the <i>Seller</i> (whether made in writing, including in the <i>Catalogue</i> , or on the <i>Website</i> , or orally, or by conduct or otherwise) and whether made before or after this agreement or prior to or during the <i>Sale</i> ;	10.5	If any term or any part of any term of the <i>Contract for Sale</i> is held to be unenforceable or invalid, such unenforceability or invalidity will not affect the enforceability and validity of the remaining terms or the remainder of the relevant term.
8.1.6	to be paid interest on any monies due (after as well as before judgement or order) at the annual rate of 5% per annum above the base rate of National Westminster Bank Plc from time to time to be calculated on a daily basis from the date upon which such monies become payable until the date of actual payment;				
8.1.7	to repossess the <i>Lot</i> (or any part thereof) which has not become your property, and for this purpose (unless the <i>Buyer</i> buys the <i>Lot</i> as a <i>Consumer</i> from the <i>Seller</i> selling in the course of a <i>Business</i>) you hereby grant an irrevocable licence to the <i>Seller</i> by himself and to his servants or agents to enter upon all or any of your premises (with or without vehicles) during normal <i>Business</i> hours to take possession of the <i>Lot</i> or part thereof;	9.3.2	the <i>Seller</i> will not be liable for any loss of <i>Business</i> , <i>Business</i> profits or revenue or income or for loss of reputation or for disruption to <i>Business</i> or wasted time on the part of the <i>Buyer</i> or of the <i>Buyer's</i> management or staff or, for any indirect losses or consequential damages of any kind, irrespective in any case of the nature, volume or source of the loss or damage alleged to be suffered, and irrespective of whether the said loss or damage is caused by or claimed in respect of any negligence, other tort, breach of contract, statutory duty, restitutionary claim or otherwise;	10.6	References in the <i>Contract for Sale</i> to <i>Bonhams</i> will, where appropriate, include reference to <i>Bonhams'</i> officers, employees and agents.
8.1.8	to retain possession of any other property sold to you by the <i>Seller</i> at the <i>Sale</i> or any other auction or by private treaty until all sums due under the <i>Contract for Sale</i> shall have been paid in full in cleared funds;			10.7	The headings used in the <i>Contract for Sale</i> are for convenience only and will not affect its interpretation.
8.1.9	to retain possession of, and on three months' written notice to sell, <i>Without Reserve</i> , any of your other property in the possession of the <i>Seller</i> and/or of <i>Bonhams</i> (as bailee for the <i>Seller</i>) for any purpose (including, without limitation, other goods sold to you) and to apply any monies due to you as a result of such <i>Sale</i> in satisfaction or part satisfaction of any amounts owed to the <i>Seller</i> or to <i>Bonhams</i> ; and	9.3.3	in any circumstances where the <i>Seller</i> is liable to you in respect of the <i>Lot</i> , or any act, omission, statement, or representation in respect of it, or this agreement or its performance, and whether in damages, for an indemnity or contribution or for a restitutionary remedy or in any way whatsoever, the <i>Seller's</i> liability will be limited to payment of a sum which will not exceed by way of maximum the amount of the <i>Purchase Price</i> of the <i>Lot</i> irrespective in any case of the nature, volume or source of any loss or damage alleged to be suffered or sum claimed as due, and irrespective of whether the liability arises from any negligence, other tort, breach of contract, statutory duty, bailee's duty, restitutionary claim or otherwise.	10.8	In the <i>Contract for Sale</i> "including" means "including, without limitation".
8.1.10	so long as such goods remain in the possession of the <i>Seller</i> or <i>Bonhams</i> as its bailee, to rescind the contract for the <i>Sale</i> of any other goods sold to you by the <i>Seller</i> at the <i>Sale</i> or at any other auction or by private treaty and apply any monies received from you in respect of such goods in part or full satisfaction of any amounts owed to the <i>Seller</i> or to <i>Bonhams</i> by you.			10.9	References to the singular will include reference to the plural (and vice versa) and reference to any one gender will include reference to the other genders.
8.2	You agree to indemnify the <i>Seller</i> against all legal and other costs of enforcement, all losses and other <i>Expenses</i> and costs (including any monies payable to <i>Bonhams</i> in order to obtain the release of the <i>Lot</i>) incurred by the <i>Seller</i> (whether or not court proceedings will have been issued) as a result of <i>Bonhams</i> taking steps under this paragraph 8 on a full indemnity basis together with interest thereon (after as well as before judgement or order) at the rate specified in paragraph 8.1.6 from the date upon which the <i>Seller</i> becomes liable to pay the same until payment by you.	9.4	Nothing set out in paragraphs 9.1 to 9.3 above will be construed as excluding or restricting (whether directly or indirectly) any person's liability or excluding or restricting any person's rights or remedies in respect of (i) fraud, or (ii) death or personal injury caused by the <i>Seller's</i> negligence (or any person under the <i>Seller's</i> control or for whom the <i>Seller</i> is legally responsible), or (iii) acts or omissions for which the <i>Seller</i> is liable under the Occupiers Liability Act 1957, or (iv) any other liability to the extent the same may not be excluded or restricted as a matter of law.	10.10	Reference to a numbered paragraph is to a paragraph of the <i>Contract for Sale</i> .
		10	MISCELLANEOUS	10.11	Save as expressly provided in paragraph 10.12 nothing in the <i>Contract for Sale</i> confers (or purports to confer) on any person who is not a party to the <i>Contract for Sale</i> any benefit conferred by, or the right to enforce any term of, the <i>Contract for Sale</i> .
8.3	On any resale of the <i>Lot</i> under paragraph 8.1.2, the <i>Seller</i> will account to you in respect of any balance remaining from any monies received by him or on his behalf in respect of the <i>Lot</i> , after the payment of			10.12	Where the <i>Contract for Sale</i> confers an immunity from, and/or an exclusion or restriction of, the responsibility and/or liability of the <i>Seller</i> , it will also operate in favour and for the benefit of <i>Bonhams</i> , <i>Bonhams'</i> holding company and the subsidiaries of such holding company and the successors and assigns of <i>Bonhams</i> and of such companies and of any officer, employee and agent of <i>Bonhams</i> and such companies, each of whom will be entitled to rely on the relevant immunity and/or exclusion and/or restriction within and for the purposes of Contracts (Rights of Third Parties) Act 1999, which enables the benefit of a contract to be extended to a person who is not a party to the contract, and generally at law.
		10.1	You may not assign either the benefit or burden of the <i>Contract for Sale</i> .		
		10.2	The <i>Seller's</i> failure or delay in enforcing or exercising any power or right under the <i>Contract for Sale</i> will not operate or be deemed to operate as a waiver of his rights under it except to the extent of any express		

11 GOVERNING LAW

All transactions to which the *Contract for Sale* applies and all connected matters will be governed by and construed in accordance with the laws of that part of the United Kingdom where the *Sale* takes place and the *Seller* and you each submit to the exclusive jurisdiction of the courts of that part of the United Kingdom, save that the *Seller* may bring proceedings against you in any other court of competent jurisdiction to the extent permitted by the laws of the relevant jurisdiction. *Bonhams* has a complaints procedure in place.

APPENDIX 2

BUYER'S AGREEMENT

IMPORTANT: These terms may be changed in advance of the *Sale* of the *Lot* to you, by the setting out of different terms in the *Catalogue* for the *Sale* and/or by placing an insert in the *Catalogue* and/or by notices at the *Sale* venue and/or by oral announcements before and during the *Sale* at the *Sale* venue. You should be alert to this possibility of changes and ask in advance of bidding if there have been any.

1 THE CONTRACT

1.1 These terms govern the contract between *Bonhams* personally and the *Buyer*, being the person to whom a *Lot* has been knocked down by the *Auctioneer*.

1.2 The Definitions and Glossary contained in Appendix 3 to the *Catalogue* for the *Sale* are incorporated into this agreement and a separate copy can also be provided by us on request. Where words and phrases which are defined in the List of Definitions are used in this agreement, they are printed in italics. Reference is made in this agreement to information printed in the *Notice to Bidders*, printed in the *Catalogue* for the *Sale*, and where such information is referred to it is incorporated into this agreement.

1.3 Except as specified in paragraph 4 of the *Notice to Bidders* the *Contract for Sale* of the *Lot* between you and the *Seller* is made on the fall of the *Auctioneer's* hammer in respect of the *Lot*, when it is knocked down to you. At that moment a separate contract is also made between you and *Bonhams* on the terms in this *Buyer's Agreement*.

1.4 We act as agents for the *Seller* and are not answerable or personally responsible to you for any breach of contract or other default by the *Seller*, unless *Bonhams* sells the *Lot* as principal.

1.5 Our personal obligations to you are governed by this agreement and we agree, subject to the terms below, to the following obligations:

1.5.1 we will, until the date and time specified in the *Notice to Bidders* or otherwise notified to you, store the *Lot* in accordance with paragraph 5;

1.5.2 subject to any power of the *Seller* or us to refuse to release the *Lot* to you, we will release the *Lot* to you in accordance with paragraph 4 once you have paid to us, in cleared funds, everything due to us and the *Seller*;

1.5.3 we will provide guarantees in the terms set out in paragraphs 9 and 10.

1.6 We do not make or give and do not agree to make or give any contractual promise, undertaking, obligation, *Guarantee*, warranty, representation of fact in relation to any *Description* of the *Lot* or any *Estimate* in relation to it, nor of the accuracy or completeness of any *Description* or *Estimate* which may have been made by us or on our behalf or by or on behalf of the *Seller* (whether made orally or in

writing, including in the *Catalogue* or on *Bonhams' Website*, or by conduct, or otherwise), and whether made before or after this agreement or prior to or during the *Sale*. No such *Description* or *Estimate* is incorporated into this agreement between you and us. Any such *Description* or *Estimate*, if made by us or on our behalf, was (unless *Bonhams* itself sells the *Lot* as principal) made as agent on behalf of the *Seller*.

2 PERFORMANCE OF THE CONTRACT FOR SALE

You undertake to us personally that you will observe and comply with all your obligations and undertakings to the *Seller* under the *Contract for Sale* in respect of the *Lot*.

3 PAYMENT

3.1 Unless agreed in writing between you and us or as otherwise set out in the *Notice to Bidders*, you must pay to us by not later than 4.30pm on the second working day following the *Sale*:

3.1.1 the *Purchase Price* for the *Lot*;

3.1.2 a *Buyer's Premium* in accordance with the rates set out in the *Notice to Bidders*, and

3.1.3 if the *Lot* is marked [AR], an *Additional Premium* which is calculated and payable in accordance with the *Notice to Bidders* together with VAT on that sum if applicable so that all sums due to us are cleared funds by the seventh working day after the *Sale*.

3.2 You must also pay us on demand any *Expenses* payable pursuant to this agreement.

3.3 All payments to us must be made in the currency in which the *Sale* was conducted, using, unless otherwise agreed by us in writing, one of the methods of payment set out in the *Notice to Bidders*. Our invoices will only be addressed to the registered *Bidder* unless the *Bidder* is acting as an agent for a named principal and we have approved that arrangement, in which case we will address the invoice to the principal.

3.4 Unless otherwise stated in this agreement all sums payable to us will be subject to VAT at the appropriate rate and VAT will be payable by you on all such sums.

3.5 We may deduct and retain for our own benefit from the monies paid by you to us the *Buyer's Premium*, the *Commission* payable by the *Seller* in respect of the *Lot*, any *Expenses* and VAT and any interest earned and/or incurred until payment to the *Seller*.

3.6 Time will be of the essence in relation to any payment payable to us. If you do not pay the *Purchase Price*, or any other sum due to us in accordance with this paragraph 3, we will have the rights set out in paragraph 7 below.

3.7 Where a number of *Lots* have been knocked down to you, any monies we receive from you will be applied firstly pro-rata to pay the *Purchase Price* of each *Lot* and secondly pro-rata to pay all amounts due to *Bonhams*.

4 COLLECTION OF THE LOT

4.1 Subject to any power of the *Seller* or us to refuse to release the *Lot* to you, once you have paid to us, in cleared funds, everything due to the *Seller* and to us, we will release the *Lot* to you or as you may direct us in writing. The *Lot* will only be released on production of a buyer collection document, obtained from our cashier's office.

4.2 You must collect and remove the *Lot* at your own expense by the date and time specified in the *Notice to Bidders*, or if no date is specified, by 4.30pm on the seventh day after the *Sale*.

4.3 For the period referred to in paragraph 4.2, the *Lot* can be collected from the address referred to in the *Notice to Bidders* for collection on the days and times specified in the *Notice to Bidders*. Thereafter, the *Lot* may be removed elsewhere for storage and you must enquire from us as to when and where you can collect it, although this information will usually be set out in the *Notice to Bidders*.

4.4 If you have not collected the *Lot* by the date specified in the *Notice to Bidders*, you authorise us, acting as your agent and on your behalf, to enter into a contract (the "*Storage Contract*") with the *Storage Contractor* for the storage of the *Lot* on the then current standard terms and conditions agreed between *Bonhams* and the *Storage Contractor* (copies of which are available on request). If the *Lot* is stored at our premises storage fees at our current daily rates (currently a minimum of £3 plus VAT per *Lot* per day) will be payable from the expiry of the period referred to in paragraph 4.2. These storage fees form part of our *Expenses*.

4.5 Until you have paid the *Purchase Price* and any *Expenses* in full the *Lot* will either be held by us as agent on behalf of the *Seller* or held by the *Storage Contractor* as agent on behalf of the *Seller* and ourselves on the terms contained in the *Storage Contract*.

4.6 You undertake to comply with the terms of any *Storage Contract* and in particular to pay the charges (and all costs of moving the *Lot* into storage) due under any *Storage Contract*. You acknowledge and agree that you will not be able to collect the *Lot* from the *Storage Contractor's* premises until you have paid the *Purchase Price*, any *Expenses* and all charges due under the *Storage Contract*.

4.7 You will be wholly responsible for packing, handling and transport of the *Lot* on collection and for complying with all import or export regulations in connection with the *Lot*.

4.8 You will be wholly responsible for any removal, storage, or other charges for any *Lot* not removed in accordance with paragraph 4.2, payable at our current rates, and any *Expenses* we incur (including any charges due under the *Storage Contract*), all of which must be paid by you on demand and in any event before any collection of the *Lot* by you or on your behalf.

5 STORING THE LOT

We agree to store the *Lot* until the earlier of your removal of the *Lot* or until the time and date set out in the *Notice to Bidders*, on the Sale Information Page or at the back of the catalogue (or if no date is specified, by 4.30pm on the seventh day after the *Sale*) and, subject to paragraphs 6 and 10, to be responsible as bailee to you for damage to or the loss or destruction of the *Lot* (notwithstanding that it is not your property before payment of the *Purchase Price*). If you do not collect the *Lot* before the time and date set out in the *Notice to Bidders* (or if no date is specified, by 4.30pm on the seventh day after the *Sale*) we may remove the *Lot* to another location, the details of which will usually be set out in the relevant section of the *Catalogue*. If you have not paid for the *Lot* in accordance with paragraph 3, and the *Lot* is moved to any third party's premises, the *Lot* will be held by such third party strictly to *Bonhams'* order and we will retain our lien over the *Lot* until we have been paid in full in accordance with paragraph 3.

6	RESPONSIBILITY FOR THE LOT		
6.1	Only on the payment of the <i>Purchase Price</i> to us will title in the <i>Lot</i> pass to you. However under the <i>Contract for Sale</i> , the risk in the <i>Lot</i> passed to you when it was knocked down to you.	7.2	You agree to indemnify us against all legal and other costs, all losses and all other <i>Expenses</i> (whether or not court proceedings will have been issued) incurred by us as a result of our taking steps under this paragraph 7 on a full indemnity basis together with interest thereon (after as well as before judgement or order) at the rate specified in paragraph 7.1.5 from the date upon which we become liable to pay the same until payment by you.
6.2	You are advised to obtain insurance in respect of the <i>Lot</i> as soon as possible after the <i>Sale</i> .		9.2.2 you notify us in writing as soon as reasonably practicable after you have become aware that the <i>Lot</i> is or may be a <i>Forgery</i> , and in any event within one year after the <i>Sale</i> , that the <i>Lot</i> is a <i>Forgery</i> ; and
7	FAILURE TO PAY OR TO REMOVE THE LOT AND PART PAYMENTS		9.2.3 within one month after such notification has been given, you return the <i>Lot</i> to us in the same condition as it was at the time of the <i>Sale</i> , accompanied by written evidence that the <i>Lot</i> is a <i>Forgery</i> and details of the <i>Sale</i> and <i>Lot</i> number sufficient to identify the <i>Lot</i> .
7.1	If all sums payable to us are not so paid in full at the time they are due and/or the <i>Lot</i> is not removed in accordance with this agreement, we will without further notice to you be entitled to exercise one or more of the following rights (without prejudice to any rights we may exercise on behalf of the <i>Seller</i>):	7.3	If you pay us only part of the sums due to us such payment shall be applied firstly to the <i>Purchase Price</i> of the <i>Lot</i> (or where you have purchased more than one <i>Lot</i> pro-rata towards the <i>Purchase Price</i> of each <i>Lot</i>) and secondly to the <i>Buyer's Premium</i> (or where you have purchased more than one <i>Lot</i> pro-rata to the <i>Buyer's Premium</i> on each <i>Lot</i>) and thirdly to any other sums due to us.
7.1.1	to terminate this agreement immediately for your breach of contract;		9.3 Paragraph 9 will not apply in respect of a <i>Forgery</i> if:
7.1.2	to retain possession of the <i>Lot</i> ;	7.4	We will account to you in respect of any balance we hold remaining from any monies received by us in respect of any <i>Sale</i> of the <i>Lot</i> under our rights under this paragraph 7 after the payment of all sums due to us and/or the <i>Seller</i> within 28 days of receipt by us of all such sums paid to us.
7.1.3	to remove, and/or store the <i>Lot</i> at your expense;	8	CLAIMS BY OTHER PERSONS IN RESPECT OF THE LOT
7.1.4	to take legal proceedings against you for payment of any sums payable to us by you (including the <i>Purchase Price</i>) and/or damages for breach of contract;	8.1	Whenever it becomes apparent to us that the <i>Lot</i> is the subject of a claim by someone other than you and other than the <i>Seller</i> (or that such a claim can reasonably be expected to be made), we may, at our absolute discretion, deal with the <i>Lot</i> in any manner which appears to us to recognise the legitimate interests of ourselves and the other parties involved and lawfully to protect our position and our legitimate interests. Without prejudice to the generality of the discretion and by way of example, we may:
7.1.5	to be paid interest on any monies due to us (after as well as before judgement or order) at the annual rate of 5% per annum above the base lending rate of National Westminster Bank Plc from time to time to be calculated on a daily basis from the date upon which such monies become payable until the date of actual payment;	8.1.1	retain the <i>Lot</i> to investigate any question raised or reasonably expected by us to be raised in relation to the <i>Lot</i> ; and/or
7.1.6	to repossess the <i>Lot</i> (or any part thereof) which has not become your property, and for this purpose (unless you buy the <i>Lot</i> as a <i>Consumer</i>) you hereby grant an irrevocable licence to us, by ourselves, our servants or agents, to enter upon all or any of your premises (with or without vehicles) during normal business hours to take possession of any <i>Lot</i> or part thereof;	8.1.2	deliver the <i>Lot</i> to a person other than you; and/or
7.1.7	to sell the <i>Lot Without Reserve</i> by auction, private treaty or any other means on giving you three months' written notice of our intention to do so;	8.1.3	commence interpleader proceedings or seek any other order of any court, mediator, arbitrator or government body; and/or
7.1.8	to retain possession of any of your other property in our possession for any purpose (including, without limitation, other goods sold to you or with us for <i>Sale</i>) until all sums due to us have been paid in full;	8.1.4	require an indemnity and/or security from you in return for pursuing a course of action agreed to by you.
7.1.9	to apply any monies received from you for any purpose whether at the time of your default or at any time thereafter in payment or part payment of any sums due to us by you under this agreement;	8.2	The discretion referred to in paragraph 8.1:
7.1.10	on three months' written notice to sell, <i>Without Reserve</i> , any of your other property in our possession or under our control for any purpose (including other goods sold to you or with us for <i>Sale</i>) and to apply any monies due to you as a result of such <i>Sale</i> in payment or part payment of any amounts owed to us;	8.2.1	may be exercised at any time during which we have actual or constructive possession of the <i>Lot</i> , or at any time after such possession, where the cessation of such possession has occurred by reason of any decision, order or ruling of any court, mediator, arbitrator or government body; and
7.1.11	refuse to allow you to register for a future <i>Sale</i> or to reject a bid from you at any future <i>Sale</i> or to require you to pay a deposit before any bid is accepted by us at any future <i>Sale</i> in which case we will be entitled to apply such deposit in payment or part payment, as the case may be, of the <i>Purchase Price</i> of any <i>Lot</i> of which you are the <i>Buyer</i> .	8.2.2	will not be exercised unless we believe that there exists a serious prospect of a good arguable case in favour of the claim.
		9	FORGERIES
		9.1	We undertake a personal responsibility for any <i>Forgery</i> in accordance with the terms of this paragraph 9.
		9.2	Paragraph 9 applies only if:
		9.2.1	your name appears as the named person to whom the original invoice was made out by us in respect of the <i>Lot</i> and that invoice has been paid; and
		10.2	Our duty to you while the <i>Lot</i> is at your risk and/or your property and in our custody and/or control is to exercise reasonable care in relation to it, but we will not be responsible for damage to the <i>Lot</i> or to other persons or things caused by:
		10.2.1	handling the <i>Lot</i> if it was affected at the time of <i>Sale</i> to you by woodworm and any damage is caused as a result of it being affected by woodworm; or
		10	OUR LIABILITY
		10.1	We will not be liable whether in negligence, other tort, breach of contract or statutory duty or in restitution or under the Misrepresentation Act 1967 or in any other way for lack of conformity with or any inaccuracy, error, misdescription or omission in any <i>Description</i> of the <i>Lot</i> or any <i>Entry</i> or <i>Estimate</i> in respect of it, made by us or on our behalf or by or on behalf of the <i>Seller</i> (whether made in writing, including in the <i>Catalogue</i> , or on the <i>Bonhams' Website</i> , or orally, or by conduct or otherwise) and whether made before or after this agreement or prior to or during the <i>Sale</i> .

- 10.2.2 changes in atmospheric pressure; nor will we be liable for:
- 10.2.3 damage to tension stringed musical instruments; or
- 10.2.4 damage to gilded picture frames, plaster picture frames or picture frame glass; and if the *Lot* is or becomes dangerous, we may dispose of it without notice to you in advance in any manner we think fit and we will be under no liability to you for doing so.

- 10.3.1 We will not be liable to you for any loss of *Business*, *Business* profits, revenue or income or for loss of *Business* reputation or for disruption to *Business* or wasted time on the part of the *Buyer's* management or staff or, if you are buying the *Lot* in the course of a *Business*, for any indirect losses or consequential damages of any kind, irrespective in any case of the nature, volume or source of the loss or damage alleged to be suffered, and irrespective of whether the said loss or damage is caused by or claimed in respect of any negligence, other tort, breach of contract, statutory duty, bailee's duty, a restitutionary claim or otherwise.

- 10.3.2 Unless you buy the *Lot* as a *Consumer*, in any circumstances where we are liable to you in respect of a *Lot*, or any act, omission, statement, representation in respect of it, or this agreement or its performance, and whether in damages, for an indemnity or contribution or for a restitutionary remedy or in any way whatsoever, our liability will be limited to payment of a sum which will not exceed by way of maximum the amount of the *Purchase Price* of the *Lot* plus *Buyer's Premium* (less any sum you may be entitled to recover from the *Seller*) irrespective in any case of the nature, volume or source of any loss or damage alleged to be suffered or sum claimed as due, and irrespective of whether the liability arises from negligence, other tort, breach of contract, statutory duty, bailee's duty, a restitutionary claim or otherwise.

You may wish to protect yourself against loss by obtaining insurance.

- 10.4 Nothing set out above will be construed as excluding or restricting (whether directly or indirectly) any person's liability or excluding or restricting any person's rights or remedies in respect of (i) fraud, or (ii) death or personal injury caused by our negligence (or any person under our control or for whom we are legally responsible), or (iii) acts or omissions for which we are liable under the Occupiers Liability Act 1957, or (iv) any other liability to the extent the same may not be excluded or restricted as a matter of law, or (v) under our undertaking in paragraph 9 of these conditions.

11 MISCELLANEOUS

- 11.1 You may not assign either the benefit or burden of this agreement.
- 11.2 Our failure or delay in enforcing or exercising any power or right under this agreement will not operate or be deemed to operate as a waiver of our rights under it except to the extent of any express waiver given to you in writing. Any such waiver will not affect our ability subsequently to enforce any right arising under this agreement.
- 11.3 If either party to this agreement is prevented from performing that party's respective obligations under this agreement by circumstances beyond its reasonable control or if performance of its obligations would by reason of such circumstances give rise to a significantly increased financial cost to it, that party will not, for so long as such circumstances prevail, be required to perform such obligations. This paragraph does not apply to the obligations imposed on you by paragraph 3.

- 11.4 Any notice or other communication to be given under this agreement must be in writing and may be delivered by hand or sent by first class post or air mail or fax transmission (if to *Bonhams* marked for the attention of the Company Secretary), to the address or fax number of the relevant party given in the *Contract Form* (unless notice of any change of address is given in writing). It is the responsibility of the sender of the notice or communication to ensure that it is received in a legible form within any applicable time period.
- 11.5 If any term or any part of any term of this agreement is held to be unenforceable or invalid, such unenforceability or invalidity will not affect the enforceability and validity of the remaining terms or the remainder of the relevant term.
- 11.6 References in this agreement to *Bonhams* will, where appropriate, include reference to *Bonhams'* officers, employees and agents.
- 11.7 The headings used in this agreement are for convenience only and will not affect its interpretation.
- 11.8 In this agreement "including" means "including, without limitation".
- 11.9 References to the singular will include reference to the plural (and vice versa) and reference to any one gender will include reference to the other genders.
- 11.10 Reference to a numbered paragraph is to a paragraph of this agreement.
- 11.11 Save as expressly provided in paragraph 11.12 nothing in this agreement confers (or purports to confer) on any person who is not a party to this agreement any benefit conferred by, or the right to enforce any term of, this agreement.
- 11.12 Where this agreement confers an immunity from, and/or an exclusion or restriction of, the responsibility and/or liability of *Bonhams*, it will also operate in favour and for the benefit of *Bonhams'* holding company and the subsidiaries of such holding company and the successors and assigns of *Bonhams* and of such companies and of any officer, employee and agent of *Bonhams* and such companies, each of whom will be entitled to rely on the relevant immunity and/or exclusion and/or restriction within and for the purposes of Contracts (Rights of Third Parties) Act 1999, which enables the benefit of a contract to be extended to a person who is not a party to the contract, and generally at law.

12 GOVERNING LAW

All transactions to which this agreement applies and all connected matters will be governed by and construed in accordance with the laws of that part of the United Kingdom where the *Sale* takes (or is to take) place and we and you each submit to the exclusive jurisdiction of the courts of that part of the United Kingdom, save that we may bring proceedings against you in any other court of competent jurisdiction to the extent permitted by the laws of the relevant jurisdiction. *Bonhams* has a complaints procedure in place.

DATA PROTECTION – USE OF YOUR INFORMATION

Where we obtain any personal information about you, we shall only use it in accordance with the terms of our Privacy Policy (subject to any additional specific consent(s) you may have given at the time your information was disclosed). A copy of our Privacy Policy can be found on our *Website* www.bonhams.com or requested by post from Customer Services Department, 101 New Bond Street, London W1S 1SR, United Kingdom or by email from info@bonhams.com.

APPENDIX 3

DEFINITIONS AND GLOSSARY

Where these Definitions and Glossary are incorporated, the following words and phrases used have (unless the context otherwise requires) the meanings given to them below. The Glossary is to assist you to understand words and phrases which have a specific legal meaning with which you may not be familiar.

LIST OF DEFINITIONS

"Additional Premium" a premium, calculated in accordance with the *Notice to Bidders*, to cover *Bonhams' Expenses* relating to the payment of royalties under the Artists Resale Right Regulations 2006 which is payable by the *Buyer* to *Bonhams* on any *Lot* marked [AR] which sells for a *Hammer Price* which together with the *Buyer's Premium* (but excluding any VAT) equals or exceeds 1000 euros (converted into the currency of the *Sale* using the European Central Bank Reference rate prevailing on the date of the *Sale*).

"Auctioneer" the representative of *Bonhams* conducting the *Sale*.

"Bidder" a person who has completed a *Bidding Form*.

"Bidding Form" our Bidding Registration Form, our Absentee Bidding Form or our Telephone Bidding Form.

"Bonhams" *Bonhams* 1793 Limited or its successors or assigns. *Bonhams* is also referred to in the *Buyer's Agreement*, the Conditions of Business and the *Notice to Bidders* by the words "we", "us" and "our".

"Book" a printed *Book* offered for *Sale* at a specialist *Book Sale*.

"Business" includes any trade, *Business* and profession.

"Buyer" the person to whom a *Lot* is knocked down by the *Auctioneer*. The *Buyer* is also referred to in the *Contract for Sale* and the *Buyer's Agreement* by the words "you" and "your".

"Buyer's Agreement" the contract entered into by *Bonhams* with the *Buyer* (see Appendix 2 in the *Catalogue*).

"Buyer's Premium" the sum calculated on the *Hammer Price* at the rates stated in the *Notice to Bidders*.

"Catalogue" the *Catalogue* relating to the relevant *Sale*, including any representation of the *Catalogue* published on our *Website*.

"Commission" the *Commission* payable by the *Seller* to *Bonhams* calculated at the rates stated in the *Contract Form*.

"Condition Report" a report on the physical condition of a *Lot* provided to a *Bidder* or potential *Bidder* by *Bonhams* on behalf of the *Seller*.

"Conditions of Sale" the *Notice to Bidders*, *Contract for Sale*, *Buyer's Agreement* and Definitions and Glossary.

"Consignment Fee" a fee payable to *Bonhams* by the *Seller* calculated at rates set out in the Conditions of Business.

"Consumer" a natural person who is acting for the relevant purpose outside his trade, *Business* or profession.

"Contract Form" the *Contract Form*, or vehicle *Entry* form, as applicable, signed by or on behalf of the *Seller* listing the *Lots* to be offered for *Sale* by *Bonhams*.

"Contract for Sale" the *Sale* contract entered into by the *Seller* with the *Buyer* (see Appendix 1 in the *Catalogue*).

"Contractual Description" the only *Description* of the *Lot* (being that part of the *Entry* about the *Lot* in the *Catalogue* which is in bold letters, any photograph (except for the colour) and the contents of any *Condition Report*) to which the *Seller* undertakes in the *Contract for Sale* the *Lot* corresponds.

"Description" any statement or representation in any way descriptive of the *Lot*, including any statement or representation relating to its authorship, attribution, condition, provenance, authenticity, style, period, age, suitability, quality, origin, value, estimated selling price (including the *Hammer Price*).

"Entry" a written statement in the *Catalogue* identifying the *Lot* and its *Lot* number which may contain a *Description* and illustration(s) relating to the *Lot*.

"Estimate" a statement of our opinion of the range within which the hammer is likely to fall.

"Expenses" charges and *Expenses* paid or payable by *Bonhams* in respect of the *Lot* including legal *Expenses*, banking charges and *Expenses* incurred as a result of an electronic transfer of money, charges and *Expenses* for loss and damage cover, insurance, *Catalogue* and other reproductions and illustrations, any customs duties, advertising, packing or shipping costs, reproductions rights' fees, taxes, levies, costs of testing, searches or enquiries, preparation of the *Lot* for *Sale*, storage charges, removal charges, removal charges or costs of collection from the *Seller* as the *Seller's* agents or from a defaulting *Buyer*, plus VAT if applicable.

"Forgery" an imitation intended by the maker or any other person to deceive as to authorship, attribution, origin, authenticity, style, date, age, period, provenance, culture, source or composition, which at the date of the *Sale* had a value materially less than it would have had if the *Lot* had not been such an imitation, and which is not stated to be such an imitation in any description of the *Lot*. A *Lot* will not be a *Forgery* by reason of any damage to, and/or restoration and/or modification work (including repainting or over painting) having been carried out on the *Lot*, where that damage, restoration or modification work (as the case may be) does not substantially affect the identity of the *Lot* as one conforming to the *Description* of the *Lot*.

"Guarantee" the obligation undertaken personally by *Bonhams* to the *Buyer* in respect of any *Forgery* and, in the case of specialist *Stamp Sales* and/or specialist *Book Sales*, a *Lot* made up of a *Stamp* or *Stamps* or a *Book* or *Books* as set out in the *Buyer's Agreement*.

"Hammer Price" the price in the currency in which the *Sale* is conducted at which a *Lot* is knocked down by the *Auctioneer*.

"Loss and Damage Warranty" means the warranty described in paragraph 8.2 of the Conditions of Business.

"Loss and Damage Warranty Fee" means the fee described in paragraph 8.2.3 of the Conditions of Business.

"Lot" any item consigned to *Bonhams* with a view to its *Sale* at auction or by private treaty (and reference to any *Lot* will include, unless the context otherwise requires, reference to individual items comprised in a group of two or more items offered for *Sale* as one *Lot*).

"Motoring Catalogue Fee" a fee payable by the *Seller* to *Bonhams* in consideration of the additional work undertaken by *Bonhams* in respect of the cataloguing of motor vehicles and in respect of the promotion of *Sales* of motor vehicles.

"New Bond Street" means *Bonhams'* saleroom at 101 New Bond Street, London W1S 1SR.

"Notional Charges" the amount of *Commission* and *VAT* which would have been payable if the *Lot* had been sold at the *Notional Price*.

"Notional Fee" the sum on which the *Consignment Fee* payable to *Bonhams* by the *Seller* is based and which is calculated according to the formula set out in the Conditions of Business.

"Notional Price" the latest in time of the average of the high and low *Estimates* given by us to you or stated in the *Catalogue* or, if no such *Estimates* have been given or stated, the *Reserve* applicable to the *Lot*.

"Notice to Bidders" the notice printed at the back or front of our *Catalogues*.

"Purchase Price" the aggregate of the *Hammer Price* and *VAT* on the *Hammer Price*.

"Reserve" the minimum price at which a *Lot* may be sold (whether at auction or by private treaty).

"Sale" the auction *Sale* at which a *Lot* is to be offered for *Sale* by *Bonhams*.

"Sale Proceeds" the net amount due to the *Seller* from the *Sale* of a *Lot*, being the *Hammer Price* less the *Commission*, any *VAT* chargeable thereon, *Expenses* and any other amount due to us in whatever capacity and howsoever arising.

"Seller" the person who offers the *Lot* for *Sale* named on the *Contract Form*. Where the person so named identifies on the form another person as acting as his agent, or where the person named on the *Contract Form* acts as an agent for a principal (whether such agency is disclosed to *Bonhams* or not), **"Seller"** includes both the agent and the principal who shall be jointly and severally liable as such. The *Seller* is also referred to in the Conditions of Business by the words "you" and "your".

"Specialist Examination" a visual examination of a *Lot* by a specialist on the *Lot*.

"Stamp" means a postage *Stamp* offered for *Sale* at a Specialist *Stamp Sale*.

"Standard Examination" a visual examination of a *Lot* by a non-specialist member of *Bonhams'* staff.

"Storage Contract" means the contract described in paragraph 8.3.3 of the Conditions of Business or paragraph 4.4 of the *Buyer's Agreement* (as appropriate).

"Storage Contractor" means the company identified as such in the *Catalogue*.

"Terrorism" means any act or threatened act of terrorism, whether any person is acting alone or on behalf of or in connection with any organisation(s) and/or government(s), committed for political, religious or ideological or similar purposes including, but not limited to, the intention to influence any government and/or put the public or any section of the public into fear.

"Trust Account" the bank account of *Bonhams* into which all sums received in respect of the *Purchase Price* of any *Lot* will be paid, such account to be a distinct and separate account to *Bonhams'* normal business bank account.

"VAT" value added tax at the prevailing rate at the date of the *Sale* in the United Kingdom.

"Website" *Bonhams Website* at www.bonhams.com

"Withdrawal Notice" the *Seller's* written notice to *Bonhams* revoking *Bonhams'* instructions to sell a *Lot*.

"Without Reserve" where there is no minimum price at which a *Lot* may be sold (whether at auction or by private treaty).

GLOSSARY

The following expressions have specific legal meanings with which you may not be familiar. The following glossary is intended to give you an understanding of those expressions but is not intended to limit their legal meanings:

"artist's resale right": the right of the creator of a work of art to receive a payment on *Sales* of that work subsequent to the original *Sale* of that work by the creator of it as set out in the Artists Resale Right Regulations 2006.

"bailee": a person to whom goods are entrusted.

"indemnity": an obligation to put the person who has the benefit of the indemnity in the same position in which he would have been, had the circumstances giving rise to the indemnity not arisen and the expression "indemnify" is construed accordingly.

"interpleader proceedings": proceedings in the Courts to determine ownership or rights over a *Lot*.

"knocked down": when a *Lot* is sold to a *Bidder*, indicated by the fall of the hammer at the *Sale*.

"lien": a right for the person who has possession of the *Lot* to retain possession of it.

"risk": the possibility that a *Lot* may be lost, damaged, destroyed, stolen, or deteriorate in condition or value.

"title": the legal and equitable right to the ownership of a *Lot*.

"tort": a legal wrong done to someone to whom the wrong doer has a duty of care.

SALE OF GOODS ACT 1979

The following is an extract from the Sale of Goods Act 1979:

"Section 12 Implied terms about title, etc

- (1) In a contract of sale, other than one to which subsection (3) below applies, there is an implied term on the part of the seller that in the case of a sale he has a right to sell the goods, and in the case of an agreement to sell he will have such a right at the time when the property is to pass.
- (2) In a contract of sale, other than one to which subsection (3) below applies, there is also an implied term that-
 - (a) the goods are free, and will remain free until the time when the property is to pass, from any charge or encumbrance not disclosed or known to the buyer before the contract is made, and
 - (b) the buyer will enjoy quiet possession of the goods except in so far as it may be disturbed by the owner or other person entitled to the benefit of any charge or encumbrance so disclosed or known.

- (3) This subsection applies to a contract of sale in the case of which there appears from the contract or is to be inferred from its circumstances an intention that the seller should transfer only such title as he or a third person may have.

- (4) In a contract to which subsection (3) above applies there is an implied term that all charges or encumbrances known to the seller and not known to the buyer have been disclosed to the buyer before the contract is made.

- (5) In a contract to which subsection (3) above applies there is also an implied term that none of the following will disturb the buyer's quiet possession of the goods, namely:

- (a) the seller;
- (b) in a case where the parties to the contract intend that the seller should transfer only such title as a third person may have, that person;
- (c) anyone claiming through or under the seller or that third person otherwise than under a charge or encumbrance disclosed or known to the buyer before the contract is made.

- (5A) As regards England and Wales and Northern Ireland, the term implied by subsection (1) above is a condition and the terms implied by subsections (2), (4) and (5) above are warranties."

Bonhams Specialist Departments

19th Century Paintings

UK
Charles O' Brien
+44 20 7468 8360
U.S.A
Madalina Lazen
+1 212 644 9108

20th Century British Art

Matthew Bradbury
+44 20 7468 8295

Aboriginal Art

Greer Adams
+61 2 8412 2222

African and Oceanic Art

UK
Philip Keith
+44 2920 727 980
U.S.A
Fred Baklar
+1 323 436 5416

American Paintings

Alan Fausel
+1 212 644 9039

Antiquities

Madeleine Perridge
+44 20 7468 8226

Antique Arms & Armour

UK
David Williams
+44 20 7393 3807
U.S.A
Paul Carella
+1 415 503 3360

Art Collections, Estates & Valuations

Harvey Cammell
+44 (0) 207 468 8340

Art Nouveau & Decorative Art & Design

UK
Mark Oliver
+44 20 7393 3856
U.S.A
Frank Maraschiello
+1 212 644 9059

Australian Art

Litsa Veldekis
+61 2 8412 2222

Australian Colonial Furniture and Australiana

James Hendy
+61 2 8412 2222

Books, Maps & Manuscripts

UK
Matthew Haley
+44 20 7393 3817
U.S.A
Christina Geiger
+1 212 644 9094

British & European Glass

UK
Simon Cottle
+44 20 7468 8383
U.S.A.
Suzy Pai
+1 415 503 3343

British & European Porcelain & Pottery

UK
John Sandon
+44 20 7468 8244
U.S.A
Peter Scott
+1 415 503 3326

Contemporary Art

U.S.A
Jeremy Goldsmith
+1 212 644 9656

California & American Paintings

Scot Levitt
+1 323 436 5425

Carpets

UK
Mark Dance
+44 8700 27361
U.S.A.
Hadjl Rahimpour
+1 415 503 3392

Chinese & Asian Art

UK
Asaph Hyman
+44 20 7468 5888
U.S.A
Dessa Goddard
+1 415 503 3333
HONG KONG
Julian King
+852 2918 4321

Clocks

UK
James Stratton
+44 20 7468 8364
U.S.A
Jonathan Snellenburg
+1 212 461 6530

Coins & Medals

UK
John Millensted
+44 20 7393 3914
U.S.A
Paul Song
+1 323 436 5455

Contemporary Art & Modern Design

UK
Gareth Williams
+44 20 7468 5834
U.S.A
Sharon Goodman Squires
+1 212 644 9128

Costume & Textiles

Claire Browne
+44 1564 732969

Entertainment Memorabilia

UK
Stephanie Connell
+44 20 7393 3844
U.S.A
Catherine Williamson
+1 323 436 5442

Ethnographic Art

Jim Haas
+1 415 503 3294

Football Sporting Memorabilia

Dan Davies
+44 1244 353118

Furniture & Works of Art

UK
Fergus Lyons
+44 20 7468 8221
U.S.A
Jeffrey Smith
+1 415 503 3413

Greek Art

Olympia Pappa
+44 20 7468 8314

Golf Sporting Memorabilia

Kevin Mcgimpsey
+44 1244 353123

Irish Art

Penny Day
+44 20 7468 8366

Impressionist & Modern Art

Deborah Allan
+44 20 7468 8276

Islamic & Indian Art

Alice Bailey
+44 20 7468 8268

Japanese Art

UK
Suzannah Yip
+44 20 7468 8368
U.S.A
Jeff Olson
+1 212 461 6516

Jewellery

UK
Jean Ghika
+44 20 7468 8282
U.S.A
Susan Abeles
+1 212 461 6525
AUSTRALIA
Patti Sedgwick
+61 2 8412 2222

Marine Art

UK
Alistair Laird
+44 20 7468 8211
U.S.A
Gregg Dietrich
+1 917 206 1697

Mechanical Music

Laurence Fisher
+44 20 7393 3984

Modern, Contemporary & Latin American Art

U.S.A
Sharon Goodman Squires
+1 212 644 9128

To e-mail any of the below use the first name dot second name @bonhams.com eg. charles.obrien@bonhams.com

Motor Cars

UK
Tim Schofield
+44 20 7468 5804
USA
Mark Osborne
+1 415 503 3353
EUROPE
Philip Kantor
+32 476 879 471
AUSTRALIA
Damien Duigan
+61 2 8412 2232
Automobilia
UK
Toby Wilson
+44 8700 273 619
USA
Kurt Forry
+1 415 391 4000

Motorcycles

Ben Walker
+44 8700 273616
Automobilia
Adrian Pirois
+44 8700 273621

Musical Instruments

Philip Scott
+44 20 7393 3855

Natural History

U.S.A
Claudia Florian
+1 323 436 5437

Old Master Pictures

UK
Andrew McKenzie
+44 20 7468 8261
U.S.A
Mark Fisher
+1 323 436 5488

Orientalist Art

Charles O'Brien
+44 20 7468 8360

Photography

U.S.A
Judith Eurich
+1 415 503 3259

Portrait Miniatures

Camilla Lombardi
+44 20 7393 3985

Prints

UK
Rupert Worrall
+44 20 7468 8262
U.S.A
Judith Eurich
+1 415 503 3259

Russian Art

UK
Sophie Hamilton
+44 20 7468 8334
U.S.A
Yelena Harbick
+1 212 644 9136

Scientific Instruments

Jon Baddeley
+44 20 7393 3872
U.S.A.
Jonathan Snellenburg
+1 212 461 6530

Scottish Pictures

Chris Brickley
+44 131 240 2297

Silver & Gold Boxes

UK
Michael Moorcroft
+44 20 7468 8241
U.S.A
Aileen Ward
+1 800 223 5463

South African Art

Giles Peppiatt
+44 20 7468 8355

Sporting Guns

Patrick Hawes
+44 20 7393 3815

Toys, Dolls & Chess

Leigh Gotch
+44 20 8963 2839

Travel Pictures

Veronique Scorer
+44 20 7393 3960

Urban Art

Gareth Williams
+44 20 7468 5879

Watches & Wristwatches

UK
Paul Maudsley
+44 20 7447 7412
U.S.A.
Jonathan Snellenburg
+1 212 461 6530
HONG KONG
Carson Chan
+852 2918 4321

Whisky

UK
Martin Green
+44 1292 520000
U.S.A
Joseph Hyman
+1 917 206 1661
HONG KONG
Daniel Lam
+852 3607 0004

Wine

UK
Richard Harvey
+44 (0) 8700 273622
U.S.A
Doug Davidson
+1 415 503 3363
HONG KONG
Daniel Lam
+852 3607 0004

UNITED KINGDOM

London
101 New Bond Street •
London W1S 1SR
+44 20 7447 7447
+44 20 7447 7400 fax

Montpelier Street •
London SW7 1HH
+44 20 7393 3900
+44 20 7393 3905 fax

South East
England

Brighton & Hove
19 Palmeira Square
Hove, East Sussex
BN3 2JN
+44 1273 220 000
+44 1273 220 335 fax

Guildford
Millmead,
Guildford,
Surrey GU2 4BE
+44 1483 504 030
+44 1483 450 205 fax

Tunbridge Wells
Ground Floor
Royal Victoria House
51-55 The Pantiles
Tunbridge Wells, Kent
TN2 5TE
+44 1892 546 818
+44 1892 518 077 fax

Isle of Wight
+44 1983 282 228

Representative:
West Sussex
Jeff Burfield
+44 1243 787 548

South West
England

Bath
Queen Square House
Charlotte Street
Bath BA1 2LL
+44 1225 788 988
+44 1225 446 675 fax

Cornwall – Par
Cornubia Hall
Eastcliffe Road
Par, Cornwall
PL24 2AQ
+44 1726 814 047
+44 1726 817 979 fax

Exeter
The Lodge
Southernhay West Exeter,
Devon
EX1 1JG
+44 1392 425 264
+44 1392 494 561 fax

Winchester
The Red House
Hyde Street
Winchester
Hants SO23 7DX
+44 1962 862 515
+44 1962 865 166 fax

Tetbury
22a Long Street
Tetbury
Gloucestershire
GL8 8AQ
+44 1666 502 200
+44 1666 505 107 fax

Representatives:
Dorset
Bill Allan
+44 1935 815 271

East Anglia

Bury St. Edmunds
21 Churchgate Street
Bury St Edmunds
Suffolk IP33 1RG
+44 1284 716 190
+44 1284 755 844 fax

Norfolk
The Market Place
Reepham
Norfolk NR10 4JJ
+44 1603 871 443
+44 1603 872 973 fax

Midlands

Knowle
The Old House
Station Road
Knowle, Solihull
West Midlands
B93 0HT
+44 1564 776 151
+44 1564 778 069 fax

Oxford •
Banbury Road
Shipton on Cherwell
Kidlington OX5 1JH
+44 1865 853 640
+44 1865 372 722 fax

Henley
The Coach House
66 Northfield End
Henley on Thames
Oxon RG9 2JN
+44 1491 413 636
+44 1491 413 637 fax

Yorkshire & North East
England

Leeds
30 Park Square West
Leeds LS1 2PF
+44 113 234 5755
+44 113 244 3910 fax

North West England

Chester •
New House
150 Christleton Road
Chester, Cheshire
CH3 5TD
+44 1244 313 936
+44 1244 340 028 fax

Carlisle
48 Cecil Street
Carlisle, Cumbria
CA1 1NT
+44 1228 542 422
+44 1228 590 106 fax

Manchester
The Stables
213 Ashley Road
Hale WA15 9TB
+44 161 927 3822
+44 161 927 3824 fax

Southport
33 Botanic Road
Churchtown
Southport
Merseyside PR9 7NE
+44 1704 507 875
+44 1704 507 877 fax

Representative:
Isle of Man
Felicity Loughran
+44 1624 822 875

Channel Islands

Jersey
39 Don Street
St.Helier
JE2 4TR
+44 1534 722 441
+44 1534 759 354 fax

Representative:
Guernsey
+44 1481 722 448

Scotland

Edinburgh •
22 Queen Street
Edinburgh
EH2 1JX
+44 131 225 2266
+44 131 220 2547 fax

Glasgow
176 St. Vincent Street,
Glasgow
G2 5SG
+44 141 223 8866
+44 141 223 8868 fax

Representatives:
Wine & Spirits
Tom Gilbey
+44 1382 330 256

Wales

Cardiff
7-8 Park Place,
Cardiff CF10 3DP
+44 2920 727 980
+44 2920 727 989 fax

EUROPE

Austria - Vienna
Garnisonsgasse 4
1090 Vienna
+43 (0)1 403 00 01
vienna@bonhams.com

Belgium - Brussels
Boulevard
Saint-Michel 101
1040 Brussels
+32 (0)2 736 5076
+32 (0)2 732 5501 fax
belgium@bonhams.com

France - Paris
4 rue de la Paix
75002 Paris
+33 (0)1 42 61 1010
+33 (0)1 42 61 1015 fax
paris@bonhams.com

Germany - Cologne
Albertusstrasse 26
50667 Cologne
+49 (0)221 2779 9650
+49 (0)221 2779 9652 fax
cologne@bonhams.com

Germany - Munich
Maximilianstrasse 52
80538 Munich
+49 (0) 89 2420 5812
+49 (0) 89 2420 7523 fax
munich@bonhams.com

Ireland - Dublin
31 Molesworth Street
Dublin 2
+353 (0)1 602 0990
+353 (0)1 4004 140 fax
ireland@bonhams.com

Italy - Milan
Via Boccaccio 22
20123 Milano
+39 (0)2 4953 9020
+39 (0)2 4953 9021 fax
milan@bonhams.com

Italy - Rome
Via Sicilia 50
00187 Rome
+39 (0)6 48 5900
+39 (0)6 482 0479 fax
rome@bonhams.com

Netherlands - Amsterdam
de Lairesestraat 123
1075 HH Amsterdam
+31 20 67 09 701
+31 20 67 09 702 fax
amsterdam@bonhams.com

Spain - Madrid
Nuñez de Balboa no.4 - 1A
Madrid
28001
+34 91 578 17 27
madrid@bonhams.com

Switzerland - Geneva
Rue Etienne-Dumont 10
1204 Geneva
Switzerland
+41 76 379 9230
geneva@bonhams.com

Representatives:
Greece
Art Expertise
+30 210 3636 404

Marbella
James Roberts
+34 952 90 62 50
marbella@bonhams.com

Portugal
Filipa Rebelo de Andrade
+351 91 921 4778
filipa.deandrade@bonhams.com

Russia
Marina Jacobson
+7 921 555 2302
russia@bonhams.com

NORTH AMERICA

USA

San Francisco •
220 San Bruno Avenue
San Francisco
CA 94103
+1 (415) 861 7500
+1 (415) 861 8951 fax

Los Angeles •
7601 W. Sunset Boulevard
Los Angeles
CA 90046
+1 (323) 850 7500
+1 (323) 850 6090 fax

New York •
580 Madison Avenue
New York, NY
10022
+1 (212) 644 9001
+1 (212) 644 9007 fax

Representatives:
Arizona
Terri Adrian-Hardy
+1 (480) 994 5362

California
Central Valley
David Daniel
+1 (916) 364 1645

District of Columbia/ Mid-Atlantic
Martin Gammon
+1 (202) 333 1696

Southern California
Christine Eisenberg
+1 (949) 646 6560

Florida
+1 (305) 228 6600

Georgia
Mary Moore Bethea
+1 (404) 842 1500

Illinois
Ricki Blumberg Harris
+1 (312) 475 3922
+1 (773) 267 3300

Massachusetts Boston/New England
Amy Corcoran
+1 (617) 742 0909

Nevada
David Daniel
+1 (775) 831 0330

New Mexico
Leslie Trilling
+1 (505) 820 0701

Oregon
Sheryl Acheson
+1(503) 312 6023

Texas
Amy Lawch
+1 (713) 621 5988

Washington
Heather O'Mahony
+1 (206) 218 5011

CANADA

Toronto, Ontario •
Jack Kerr-Wilson
20 Hazelton Avenue
Toronto, ONT
M5R 2E2
+1 (416) 462 9004
info.ca@bonhams.com

Montreal, Quebec
David Kelsey
+1 (514) 341 9238
info.ca@bonhams.com

SOUTH AMERICA

Argentina
Daniel Claramunt
+54 11 479 37600

Brazil
Thomaz Oscar Saavedra
+55 11 3031 4444
+55 11 3031 4444 fax

ASIA

Hong Kong
Carson Chan
Suite 1122
Two Pacific Place
88 Queensway
Admiralty
Hong Kong
+852 2918 4321
+852 2918 4320 fax

Beijing
Xibo Wang
Room A515
F/5 CBD International Mansion
No. 16 Yongan Dongli
Chaoyang District
Beijing 100022
+852 3607 0023
+852 2918 4320 fax

Japan
Hiromi Ono
Level 14 Hibiya Central Building
1-2-9 Nishi-Shimbashi
Minato-ku
Tokyo 105-0003
+81 (0) 3 5532 8636
+81 (0) 3 5532 8637 fax
tokyo@bonhams.com

Taiwan
+886 2 8758 2898

AUSTRALIA

Sydney
76 Paddington Street
Paddington NSW 2021
Australia
+61 (0) 2 8412 2222
+61 (0) 2 9475 4110 fax
info.aus@bonhams.com

Melbourne
Ormond Hall
557 St Kilda Rd
Melbourne VIC 3004
+61 (0) 3 8640 4088

Representatives:
Perth
Norah Ohrt
+61 (0) 8 9433 4414

Adelaide
James Bruce
+61 (0) 8 8232 2860

AFRICA

South Africa - Johannesburg
Penny Culverwell
+27 (0)71 342 2670
penny.culverwell@bonhams.com

Registration and Bidding Form

(Attendee / Absentee / Online / Telephone Bidding)

Please circle your bidding method above.

--	--	--	--

Paddle number (for office use only)

This sale will be conducted in accordance with Bonhams' Conditions of Sale and bidding and buying at the Sale will be regulated by these Conditions. You should read the Conditions in conjunction with the Sale Information relating to this Sale which sets out the charges payable by you on the purchases you make and other terms relating to bidding and buying at the Sale. You should ask any questions you have about the Conditions before signing this form. These Conditions also contain certain undertakings by bidders and buyers and limit Bonhams' liability to bidders and buyers.

Data protection – use of your information

Where we obtain any personal information about you, we shall only use it in accordance with the terms of our Privacy Policy (subject to any additional specific consent(s) you may have given at the time your information was disclosed). A copy of our Privacy Policy can be found on our website (www.bonhams.com) or requested by post from Customer Services Department, 101 New Bond Street, London W1S 1SR United Kingdom or by e-mail from info@bonhams.com.

Credit and Debit Card Payments

There is no surcharge for payments made by debit cards issued by a UK bank. All other debit cards and all credit cards are subject to a 3% surcharge on the total invoice price.

Notice to Bidders.

Clients are requested to provide photographic proof of ID - passport, driving licence, ID card, together with proof of address - utility bill, bank or credit card statement etc. Corporate clients should also provide a copy of their articles of association / company registration documents, together with a letter authorising the individual to bid on the company's behalf. Failure to provide this may result in your bids not being processed. For higher value lots you may also be asked to provide a bank reference.

If successful

I will collect the purchases myself ☐
Please contact me with a shipping quote ☐
(if applicable)

Telephone or Absentee (T / A)	Lot no.	Brief description	MAX bid in GBP (excluding premium & VAT)	Covering bid*

FOR WINE SALES ONLY

Please leave lots "available under bond" in bond ☐ I will collect from Park Royal or bonded warehouse ☐ Please include delivery charges (minimum charge of £20 + VAT) ☐

BY SIGNING THIS FORM YOU AGREE THAT YOU HAVE READ AND UNDERSTAND OUR CONDITIONS OF SALE AND WISH TO BE BOUND BY THEM. THIS AFFECTS YOUR LEGAL RIGHTS.

Your signature: _____ Date: _____

* Covering Bid: A maximum bid (exclusive of Buyers Premium and VAT) to be executed by Bonhams only if we are unable to contact you by telephone, or should the connection be lost during bidding.

NB. Payment will only be accepted from an account in the same name as shown on the invoice and Auction Registration form.

Please email or fax the completed Auction Registration form and requested information to:

Bonhams, Customer Services, 101 New Bond Street, London, W1S 1SR. Tel: +44 (0) 20 7447 7447 Fax: +44 (0) 20 7447 7401, bids@bonhams.com

Bonhams 1793 Limited. Montpelier Street, London SW7 1HH. Incorporated in England. Company Number 4326560.

Bonhams

1793

Sale title: Jewellery	Sale date: 5 February 2013
Sale no. 20675	Sale venue: Oxford
If you are not attending the sale in person, please provide details of the Lots on which you wish to bid at least 24 hours prior to the sale. Bids will be rounded down to the nearest increment. Please refer to the Notice to Bidders in the catalogue for further information relating to Bonhams executing telephone, online or absentee bids on your behalf. Bonhams will endeavour to execute these bids on your behalf but will not be liable for any errors or failing to execute bids.	
General Bid Increments:	
£10 - 200by 10s	£10,000 - 20,000by 1,000s
£200 - 500by 20 / 50 / 80s	£20,000 - 50,000by 2,000 / 5,000 / 8,000s
£500 - 1,000by 50s	£50,000 - 100,000by 5,000s
£1,000 - 2,000by 100s	£100,000 - 200,000by 10,000s
£2,000 - 5,000by 200 / 500 / 800s	above £200,000at the auctioneer's discretion
£5,000 - 10,000by 500s	
The auctioneer has discretion to split any bid at any time.	
Customer Number	Title
First Name	Last Name
Company name (to be invoiced if applicable)	
Address	
City	County / State
Post / Zip code	Country
Telephone mobile	Telephone daytime
Telephone evening	Fax
Preferred number(s) in order for Telephone Bidding (inc. country code)	
E-mail (in capitals) <input type="text"/>	
<input type="text"/>	
I am registering to bid as a private client <input type="checkbox"/>	I am registering to bid as a trade client <input type="checkbox"/>
If registered for VAT in the EU please enter your registration here: <input type="text"/>	Please tick if you have registered with us before <input type="checkbox"/>

Please note that all telephone calls are recorded.



213

BB 1793

Bonhams

Banbury Road,
Shipton on Cherwell,
Kidlington
Oxford OX5 1JH
+44 (0) 1865 853 640
+44 (0) 1865 372 722 fax

