

British & European Ceramics, Glass & Asian Art

Wednesday 16 January 2013
Oxford





British & European Ceramics, Glass & Asian Art

Wednesday 16 January 2013 at 11am
Oxford

Bonhams

Banbury Road,
Shipton on Cherwell,
Kidlington
Oxford OX5 1JH
www.bonhams.com

Viewing

Saturday 12 January 9am to 12pm
Monday 14 January 9am to 5pm
Tuesday 15 January 9am to 5pm
Wednesday 16 January 9am to 11am

Bids

+44 (0) 20 7447 7448
+44 (0) 20 7447 7401 fax
To bid via the internet
please visit www.bonhams.com

Please provide details of the lots
on which you wish to place bids
at least 24 hours prior to the sale.

New bidders must also provide
proof of identity when submitting
bids. Failure to do this may result
in your bids not being processed.

Live online bidding is available for this sale

Please email bids@bonhams.com
with "Live bidding" in the subject
line 48 hours before the auction
to register for this service.

Enquiries

Sarah Shirley-Priest
+44 (0) 1564 732 962
sarah.shirleypriest@bonhams.com

Joanna Ward
+44 (0) 1564 732 964
joanna.ward@bonhams.com

Oxford saleroom
+44 1865 853640
oxford@bonhams.com

Customer Services

Monday to Friday 8.30am to 6pm
+44 (0) 20 7447 7447

Sale Number: 20673

Catalogue: £8

Important notice to all buyers

Please note in this catalogue there
is no reference in the catalogue
description of any presence of
damage, repair or restoration.
Condition reports on any lot are
available by request from the
department. In providing condition
reports we do not guarantee or
imply that there are no other
defects present, which have not
been mentioned. Please see the
full conditions of sale printed in
this catalogue.

Please see page 2 for bidder
information including after-sale
collection and shipment

Please see back of catalogue
for important notice to bidders

Please Note

We reserve the right to refuse entry
into the saleroom. No coats or bags
will be allowed into the saleroom
and are left at owners' risk.

Illustrations

Front cover: Lot 23 (part)
Back cover: Lot 27
Inside front cover: Lot 248
Inside back cover: Lot 277



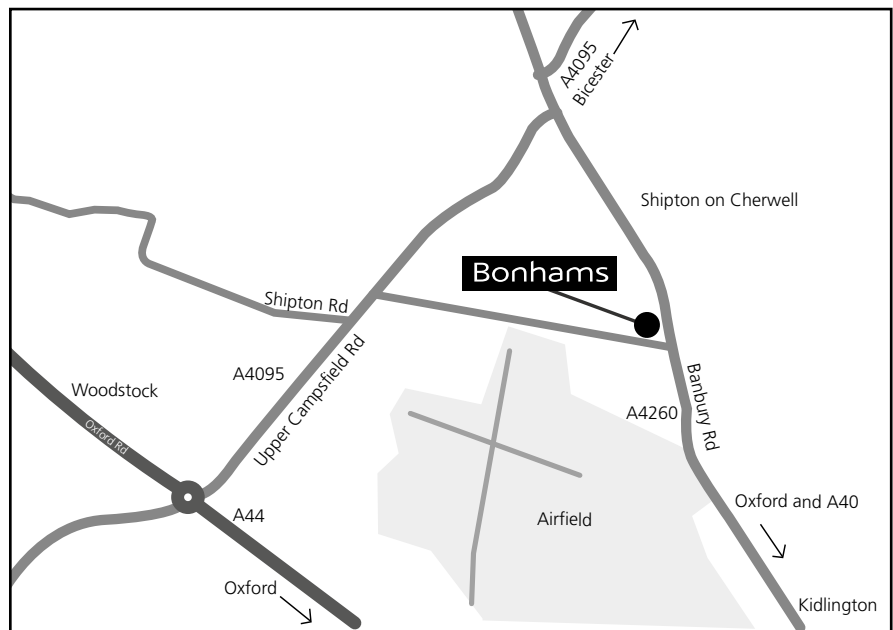
Bonhams 1793 Limited
Registered No. 4326560
Registered Office: Montpelier Galleries
Montpelier Street,
London SW7 1HH
+44 (0) 20 7393 3900
+44 (0) 20 7393 3905 fax

Bonhams 1793 Ltd Directors
Robert Brooks Chairman, Colin Sheaf Deputy Chairman,
Malcolm Barber Group Managing Director,
Matthew Girling CEO UK and Europe,
Geoffrey Davies, Jonathan Horwich, James Knight,
Patrick Meade, Caroline Oliphant, Hugh Watchorn.

Bonhams UK Ltd Directors
Colin Sheaf Chairman, Jonathan Baddeley, Antony Bennett,
Matthew Bradbury, Harvey Cammell, Simon Cottle,
Andrew Currie, David Dallas, Paul Davidson, Jean Ghika,
Charles Graham-Campbell, Miranda Grant, Robin Hereford,
Charles Lanning, Camilla Lombardi, Fergus Lyons,
Paul Maudsley, Gordon McFarlan, Andrew McKenzie,
Simon Mitchell, Jeff Muse, Mike Neill, Charlie O'Brien,
David Park, Giles Peppiatt, Peter Rees, Julian Roup,

Iain Rushbrook, John Sandon, Tim Schofield,
Veronique Scorer, James Stratton, Roger Tappin,
Shahin Virani, David Williams, Michael Wynnell-Mayow.

Sale Information



By Rail: Oxford train station

Bids

+44 (0) 20 7447 7448
+44 (0) 20 7447 7401 fax
To bid via the internet please visit
www.bonhams.com

Payments

Buyers

+44 (0) 20 7447 7447
+44 (0) 20 7447 7401 fax

Sellers

Payment of sale proceeds
+44 (0) 20 7447 7447
+44 (0) 20 7447 7401 fax

Valuations, taxation and heritage

+44 (0)20 7468 8340
+44 (0)20 7468 5860 fax
valuations@bonhams.com

Catalogue subscriptions

To obtain other catalogues or
take out an annual subscription:
Subscriptions Department
+44 (0) 1666 502200
+44 (0) 1666 505107 fax
subscription@bonhams.com

Shipping

Shipping Information (Excluding
Book Sales)
Unless you wish to use your own
shipping company, please contact
either of the below:

Mailboxes Etc. (Small Items Only)
266 Banbury Road,
Oxford, OX2 7DL
+44 (0) 1865 514 655.
info@mbesummertown.co.uk

Pack & Send
3 Botley Road,
Oxford, OX2 0AA
+44 (0) 1865 260 610
oxford@packsend.co.uk

Saleroom

Banbury Road,
Shipton on Cherwell,
Kidlington
Oxford
OX5 1JH

+44 (0) 1865 853 640
+44 (0) 1865 372 722 fax

Offices

Henley

Guy Haskell
The Coach House
66 Northfield End
Henley on Thames
Oxon RG9 2JN
+44 (0) 1491 413 636
+44 (0) 1491 413 637 fax

Winchester

The Red House
Hyde Street
Winchester
Hants
SO23 7DX
+44 (0) 1962 862 515
+44 (0) 1962 865 166 fax

Regional Director

Michael Wynell-Mayow

Valuation Enquiries

Anna Pelly-Fry
Carol Knight

Arts & Antiques

Toby Messenger
Frances Robinson

Furniture, Works of Art, Clocks, Barometers & Carpets

Michael Wynell-Mayow
Michael Welch
Toby Messenger
Simon Davies

Pictures

Alicia Rogers
Lizzie Hill

Books

John Walwyn-Jones

Jewellery

Frances Noble
Tessa Parry
Isabella Mendes
Hannah Ibison

Silver

Michael Welch

Condition Reports

We highly recommend that
potential buyers make efforts to
inspect the lots in Oxford in
person, during our public viewing.
We expect that there may be
a large number of condition
enquiries, and the effect will be
that clients submitting long and
elaborate requests are likely to be
dealt with after those with short
and specific requests.



**British & European Ceramics,
Glass & Asian Art**
Wednesday 16 January 2013



3



4

Glass

1 •

Six reference books on glass

Comprising: Joseph Bles: *Rare English Glasses of the 17th and 18th century*; Grant R Francis: *Old English Drinking Glasses*; Cinzano Glass collection; Hartshorne: *Antique Drinking Glasses*; Francis Buckley: *Old English Glass*; and Dudley Westropp: *Irish Glass* (6)

£300 - 500

2 •

An extensive reference library relating to glass

Including sale and exhibition catalogues (qty)

£300 - 500

3

A pair of opaque-twist wine glasses, and three other opaque-twist glasses, 18th century

The pair of glasses with flared conical bowls with basal flutes, *14.2cm*, another with an ogee bowl with basal flutes, *14.6cm*, another with a plain ogee bowl, *14cm*, and one with a plain funnel bowl, *14.5cm* (5)

£500 - 700

4

A Dutch-engraved baluster armorial goblet, circa 1750

The round funnel bowl engraved with an armorial of a crowned shield flanked by two lions, set on a hexagonal moulded stem with diamonds on the shoulder, on folded foot, *16cm high*

£600 - 800



5

5

A group of six opaque-twist wine glasses, 18th century

Comprising two with round funnel bowls with basal flutes, *14.1cm and 14.4cm*, one with a plain round funnel bowl, *14.5cm*, one with an ogee bowl with basal flutes, *14.5cm*, and two with plain ogee bowls, *13.8cm and 14cm* (6)

£600 - 800

6

A German wine glass, 18th century

With bucket bowl engraved with a shield and crowned lion, within an elaborate border of scrolls, flowers and leaves, the reverse with monogram, on inverted baluster stem and domed foot, *19cm high*

£250 - 300

7

An opaque-twist wine glass, 18th century

With a bell bowl on a knopped opaque-twist stem and conical foot, *17cm*

£300 - 400

8

A sealed and dated wine bottle, dated 1788

Of squat cylindrical shape, applied with a circular seal inscribed 'Wm Strang 1788', *25cm high*

£500 - 700



8



9

9

Four opaque-twist glasses and an airtwist wine glass, 18th century

The opaque-twist glasses comprising one with a round funnel bowl with basal flutes, on double-series stem, 14cm, one with an ogee bowl, 14cm, one with a rounded engraved bowl, 13.2cm, and a firing glass with engraved bowl, 10.5cm, the airtwist glass with a bell bowl engraved with a foliate frieze, 16cm (5)

£600 - 800

10

Twelve green-tinted wine or cordial glasses, early 19th century

Including one with fluted cup-shaped bowl and a moulded foot, 13.5cm, another with moulded baluster stem, 11.5cm, another with gilded Greek key border and nine others (12)

£500 - 800

11

A group of amethyst-tinted glassware, early 19th century

Comprising four wine glasses, with knopped stems, largest 14cm, a wine glass rinser, a plain finger bowl and a plate (7)

£500 - 600

12

A collection of twenty-eight green-tinted wine glasses, 19th and early 20th century

Including a set with raspberry prunt stems (28)

£500 - 800



13



14

13

A pair of French opaline glass vases, late 19th century

Baluster and painted to circular panels with detailed studies of children in the 18th century style, surrounded by elaborately gilded borders, the reverses with colourful flowers, 56cm (2)

£500 - 800

14

A sulphide glass beaker, another smaller beaker and two framed collections of tassie-type glass paste miniature portraits, circa 1820-30

The larger beaker with single sulphide bust length portrait of a gentleman, possibly Prince Leopold, scalloped foot, 14cm, the smaller fluted and set with a sulphide of the coat of arms for the Royal Northumberland Fusiliers, 9.5cm, the framed collections comprising twenty-seven miniature sulphide silhouette portraits including George III, George IV, Nelson and Wesley, and a group of twenty-three sulphide portraits on shaped mounts (4)

£500 - 700

15

A Stourbridge cameo glass vase, circa 1880-90

Of ovoid form in sage green overlaid in white and carved with hibiscus-like flowers, buds and leaves, 16.5cm high

£500 - 700



15



16



19



17

16
Eight various English paperweights, late 19th century
 Mostly Whitefriars or similar, including a weight set with groups of multi-coloured canes on a bed of latticino lengths, the border with red, white and blue canes, 9.5cm, the others variously set with rows of concentric coloured canes, approximately 8-10cm diameter (8)
 £500 - 800

17
A Bacchus millefiori paperweight, mid to late 19th century
 Enclosing four large pastrymould canes surrounded by cogwheel and flower canes, encircled by a row of blue and white cogwheel canes, 8.5cm diameter, 5.5cm high
 £500 - 800

18
A group of seven English paperweights, three inkwells and two stoppers and three inkwell bases, late 19th century
 The paperweights probably Whitefriars and set with multi-coloured canes and swirl motifs, the inkwells set with rows of concentric canes, two with stoppers, the three inkwell bases later adapted from inkwells (15)
 £500 - 800

19
A Clichy purple pansy paperweight, circa 1850
 The flower with two purple and three cream petals with purple tips, two stems, leaves and a purple bud, 7cm diameter, 4.5cm high
 £600 - 800

20
A pair of cut-glass decanters and stoppers, early 19th century
 With slice and hobnail cut decoration, 25cm (4)
 £500 - 600

21
A Facon de Venise glass bottle, late 19th century
 With moulded body and applied blue rim, collar and base, 18cm high
 £200 - 300

22
A pair of triple-ring neck decanters and stoppers, early 19th century
 With bull's eye flattened stoppers, faceted club shape bodies, 28cm (4)
 £400 - 500

23
A comprehensive and impressive suite of Stourbridge 'rock crystal' glass, probably Stevens and Williams, circa 1870-80
 Moulded with lappet panels finely engraved in the chinoiserie style with trailing branches of blossom, with petal-shaped feet, engraved with borders of similar flowers, comprising a set of eleven hock glasses flashed in pink, sepia and pale green, 13cm, and a jug of upright shape with loop handle, flashed in sepia, 30cm, a ewer and stopper, globular with tall faceted neck, loop handle and globular engraved stopper with pointed finial, 34cm, another similar with compressed ovoid body, 27.5cm, three similar smaller decanters and stoppers, 26.5cm, two decanters and stoppers, 34cm, a water jug, of conical shape, 25cm, an oval dessert dish, 25.5cm wide, six dessert bowls and stands, stands 15cm diameter, seven champagnes, ten large tumblers, 11cm, eight small tumblers, 9cm, four claret glasses, 16.2cm, eleven small liqueurs, 9cm, eight large liqueurs, 11cm, eight sherry glasses, 12.5cm, six port glasses, 12cm, thirteen hock glasses, 13.5cm, and five posy vases, 8cm (128)
 £4,000 - 5,000

See From Palace to Parlour A Celebration of 19th century British Glass, an exhibition at the Wallace Collection, item 127, a decanter, with similarly cut blossoming branches



23 (part)



23 (part)



24



25



26

British Pottery

24

An English delftware pharmacy jar, circa 1720-30

Of oviform, painted in blue with strapwork cartouches edged with scrolls and surmounted by shells flanked by winged putti holding flower sprigs, inscribed 'C:CORT:AUR.', 18.5cm high

£600 - 800

This jar would have held Conditus Cortex Aurantiorum, meaning candied orange peel. This was used for flavour and as a mild tonic, to warm and strengthen the stomach.

25

Three English delft plates, 18th century

One painted in blue with a stylised basket of flowers within a diamond pattern and foliate sprays to the border, 33.5cm diameter, another with sprays of flowers and tall grasses, 36.5cm diameter, another in polychrome with flower sprays, 33cm diameter (3)

£500 - 600

26

A good pair of Staffordshire saltglaze coffee cups and a similar larger cup, circa 1745-50

Each of U shape with a slight flaring rim and applied with grooved strap handles, moulded in relief with eight vertical panels containing curious and fanciful motifs including fables, mythical animals, figures and heraldic devices, beneath finely turned rims, 6.5cm and 7.7cm high (3)

£750 - 1,000

27

A rare and interesting Yorkshire Creamware teapot and cover, circa 1766

Protesting against the Cider Act, globular with a crabstock spout and cross over handles, an embossed diaper band around the circumference, inscribed in black within a red feather-like cartouche 'No Cyder Act', the reverse with 'Apples at Liberty' within a similar cartouche, 13.5cm high (2)

£700 - 900

The Cider Act of 1763 led to widespread protests in Britain and especially in the Colonies. The repeal of the tax in July 1766 was celebrated throughout the country. See an article by Roger Kemp in Country Magazine, June 1985, where the present lot is illustrated, p.31. A very similar teapot was exhibited by Sampson and Horne, 2007, catalogue fig.73



28

28

Two English delft flower bricks, mid 18th century

One painted in blue with a Chinese figure holding a bird, another bird perched on a fence by flower sprays, the top with a central oblong aperture flanked by six small holes to each side, 15.5cm wide, the other painted in blue with a bird on a branch and foliate sprays, the top with a central circular hole flanked by twenty-six smaller, 16.5cm wide (2)
£500 - 700

29

A group of Wedgwood and similar pearlware plates, circa 1820-30

Including a set of six plates and a dish painted with a band of wild roses on a magenta ground, 20.5cm two other dishes and twelve other dessert plates with brightly decorated border designs, some impressed WEDGWOOD (21)
£300 - 500



30

30

An English delftware pharmacy jar, second quarter 18th century

Of globular form with a short cylindrical spout, painted in blue with a putti and shell label inscribed 'Mel:Rosar', 19cm high
£300 - 400

This jar would have contained an extract of rose petals and honey.

31

A Ralph Wood type Toby Jug, circa 1790

The seated man resting a jug of foaming ale on his knee, a pipe resting at his feet, creamware with mottled blue, green and brown glaze, 25cm
£300 - 500



35



32



34



33

32

A pearlware model of a hawk, early 19th century

With sponged and painted decoration in brown, yellow and green, 15cm high

£500 - 700

33

A rare Staffordshire figure of St Vincent de Paul, mid 19th century

Standing wearing long robes and skull cap, holding a child in his arms, on stepped base with inscribed title, 37cm high

£800 - 1,200

See Pugh 'Staffordshire Portrait Figures', p.379, pl5. Saint Vincent de Paul (1576-1660) was a French priest and philanthropist. He founded the Paris Foundling Hospital and other lay nursing organisations. He was canonized in 1737.

34

A pair of pearlware figures of Neptune and Venus, circa 1790

Both standing on raised square plinths with foliate moulding to the borders, Neptune holding a trident and with his foot on a dolphin, 29cm high, Venus with Cupid at her side, 28cm high, impressed title to the back of the plinth (2)

£400 - 600

35

A creamware bust of Milton, circa 1780

On a flared socle base, 21.5cm high

£500 - 600



36

36
A William Godwin plaque painted with a portrait of Princess Mary of Teck, dated 1893

Of rectangular form, painted with a three-quarter length portrait of the Princess leaning on a chair and holding a feathered fan, 30cm x 20cm, framed and glazed, manufacturer's paper label to the back dated 21 Jun 1893

£400 - 600



37

37
A large W. B. Simpson large tile panel, late 19th century
Painted with a man holding cages of birds, a bag slung over his shoulder, a boy and dog at his side, painted 'W. B. Simpson 100 St Martins Lane London, with a gadrooned tile border, 109cm x 69cm

£1,000 - 1,500

38
A Joseph Kishere, Mortlake stoneware jug, early 19th century and a group of similar stoneware, late 19th/early 20th century

The Joseph Kishere jug with a reeded neck and applied sprig moulded decoration, 23cm, impressed mark 'Kishere', the other items comprising a Doulton Lambeth baluster jug, 27.5cm high, impressed mark, a Royal Doulton tyg, 15cm, a Doulton Lambeth tapered jug, 19.5cm, three other sprig moulded stoneware jugs, 24cm, 19cm and 13cm, and two miniature jugs, 6.5cm (9)

£500 - 700



38 part)

39
A Minton majolica figure, 'Cupid Plotter' modelled by Hughes Protat, dated 1865

The standing figure wearing a long hooded dark purple cloak, on circular base, 25cm high, impressed marks and Minton shape no.350

£500 - 700



39



40



41



42

40

A pair of Minton majolica jardinières, circa 1870-80

Of urn shape with double laurel garland handles, the blue glazed ground with Greek key and gadroon moulded borders, 33cm, impressed MINTON, shape number 766 (2)

£700 - 1,000

41

A Minton majolica garden seat, circa 1870-80

Of hexagonal form with a lobed top, relief moulded with panels of scrolling foliage, on a turquoise ground, 51cm high

£500 - 700

42

A George Jones majolica tall column pedestal, circa 1870

Relief moulded with berries and leaves within anthemion borders, on a turquoise ground, 94cm high, painted mark 833

£500 - 700



43

43
A Minton majolica jardinière, and a pair of Minton majolica figural pedestals, circa 1870-80

The jardinière decorated in relief with oval classical portraits on a ground moulded with laurel branches, brightly glazed in blue, yellow, pink and green, 39cm, impressed MINTON, shape number 6821, the pedestals modelled as cherub boys clad in fur drapes and ivy garlands, one holding a tambourine, the other a set of pipes, 42cm, impressed MINTON, shape number 873 (3)

£800 - 1,000

44

Two Sunderland lustre jugs, early 19th century

Both printed with views of Sunderland bridge, one with a panel depicting the Mariner's Arms and verse to the opposite side, picked out in colours on a pink lustre ground, 20.5cm, the other with a sailing ship and verse in monochrome on a pink lustre ground, 19.5cm (2)

£300 - 500

45

A group of British pottery, two Staffordshire figures, two Dutch Delft vases and a Chinese blue and white tea canister, late 18th and 19th century

Including five Turner vases, three with printed chinoiserie decoration, largest 19cm, a creamware coffee pot and cover and a jug, 25cm and 16cm, (13)

£200 - 400



46



47



50



48

British Porcelain

46

A Chelsea octagonal deep plate, circa 1755

Painted with a group of mixed flowers and smaller sprigs and insects, within a moulded line border and a brown line rim, 24cm diameter, red anchor mark

£350 - 500

47

A rare Chelsea figure of a gardener, circa 1760-65

Of small size and standing on a square base, a large basket over his left arm, 11cm high, gold anchor mark

£400 - 600

48

A Chelsea teapot and cover, circa 1760-65

Of Rococo form, pierced scroll handle and spout, the baluster body painted with groups of European figures beside classical statuary, surrounded by scattered flower sprigs, the flattened cover with flower finial, 13cm, (2)

£500 - 800

49

A pair of Chelsea figures of flower sellers, circa 1762-65

Modelled seated, the lady holding a bouquet of flowers and a hat in her left arm, the gallant with a basket of flowers on his lap, the scrollwork bases heightened with gilding, 13.7cm and 14.8cm high, gold anchor marks (2)

£600 - 800



51



49

50

A Bow salad bowl, circa 1755

Of square form with a shaped rim, the interior painted in blue with flowering peony and bamboo, within a diaper border, 23cm wide

£500 - 800

51

A pair of Bow figural candlesticks, circa 1770

Modelled with a cherub standing holding a basket of fruit and flowers, the bocage extensively applied with flowers and metal fitted branch with porcelain nozzle, 21.5cm, anchor and dagger marks in red (2)

£500 - 800



53

52

A pair of Bow figures of putti, a pair of Bow figures of New Dancers and a pair of Locke & Co vases, 18th and 19th century
The putti standing holding baskets of flowers and wearing flower garlands, *14cm*, one with anchor and dagger marks in red, the dancers standing in traditional poses and wearing brightly coloured costumes, *17cm and 18cm high*, anchor and dagger marks in red, the Locke & Co vases painted with pheasants, *7.5cm high*, printed marks (5)
£650 - 750

53

A Bow figure of a girl and a matched pair of Derby figures, 18th century
The Bow figure, in white, modelled as a girl seated beside a basket of flowers, *12cm high*, the Derby figures modelled as a boy and a girl standing holding large baskets, on scroll moulded bases with detail picked out in puce and gold, *14cm*, patch marks (3)
£550 - 700

54

A Bow figural salt, circa 1765
Modelled with a kneeling blackamoor figure holding aloft a scallop shell, the base with scroll moulding applied with flowers and edged in puce, the figure wearing a blue jacket and flower painted skirt, *15cm*, incised TO mark for John Toulouse
£300 - 500

55

A Bow candlestick and a 'Birds in Branches' group, circa 1765-70
The candlestick modelled with a bird perched amongst bocage and applied flowers, the nozzle and base edged in blue and puce, *20.5cm*, the other group with two birds amongst flowers, with metal fitting surmounted by a Chelsea flower form nozzle with leaf-moulded drip pan, *22.5cm* (2)
£500 - 800

56

A Bow figural salt, circa 1760 and a Bow bowl, circa 1765-70
The salt modelled with a Turkish lady seated holding a large scallop shell, with puce headress, flower painted dress and yellow coat and breeches, the shell painted with flowers, *18.5cm*, the bowl with pierced rim and osier moulded exterior, painted in the Chelsea style with three fancy birds in a landscape, *16.5cm*, anchor and dagger marks in red (2)
£500 - 800



52 (part)



54



55



56



57



58



59



62

57

A group of Lowestoft porcelain, 18th century

Comprising a 'Dragon pattern' dish, 14.5cm diameter, a patty pan painted with an insect, 7.6cm diameter, painter's mark, a miniature saucer painted with a river landscape, 7.8cm diameter and a creamboat, of small size with a square handle painted in blue, framed by moulded scrollwork, 5cm high, painter's mark (4)
£700 - 900

58

A Lowestoft teapot and cover, a sparrow beak jug and a teabowl and saucer, circa 1765

The teapot globular with a plain loop handle, painted in blue with a Chinese river landscape scene, 13cm, the jug with a version of the 'Cannonball' pattern, 7.5cm, the teabowl with moulded decoration concealing monogram and date, reserved with small landscape vignettes and a central flower sprig, saucer 12cm
£250 - 300

59

A Lowestoft oval potting pot, circa 1762-65

Painted in blue with small landscape vignettes enclosed by moulded borders and flowers, the interior painted with flower sprays, 14cm
£300 - 400

60

A Lowestoft bowl, circa 1765-1770

With crisp IH type moulding reserving three simple landscape panels painted in blue, the rim with a geometric border, the inside painted with a flower sprig, 13cm diameter
£400 - 600

61

A pair of London-decorated Chinese armorial plates, circa 1755-60

Painted with insects and flower sprays within a gilded border, with an eagle's head armorial, 22.5cm diameter (2)
£200 - 300

For another pair from the same service see Stephen Hanscombe, *The Early James Giles*, p.105, fig. 111

62

A Chaffers teabowl and saucer, circa 1760-65

Painted in blue with the 'Jumping Boy' pattern of a lady seated on rocks and holding a flower, an acrobatic child beside her, flanked by a willow tree and formal rocks (2)
£500 - 800



63

63

Four Seth Pennington, Liverpool 'Tall Chelsea Ewer' cream jugs, circa 1775-90

One printed in blue with the 'Fisherman' pattern, 8.6cm high, one printed in blue with a 'Nankin' style oriental landscape, 8.8cm high, one painted with a landscape in Imari colouring, 8.7cm high, the fourth painted in colours with the 'Peahen' pattern of a Fancy Bird in branches, 8.8cm high (4)

£200 - 300

Provenance: The Geoffrey Godden Collection

64

A group of English porcelain pickle dishes and small dishes, circa 1760-80

Including a Lowestoft patty pan, painted to the inside with a moth, the rim with a scalloped band, 8cm, a leaf-shaped pickle dish, painted with vines, 9cm, an unusual Bow leaf-shaped pickle dish, painted with colourful flower sprays, 9cm, anchor and dagger mark in red, a Derby leaf pickle dish, painted in blue with flowers, 9cm, two Worcester vine leaf pickle dishes, one in the 'Pickle Leaf Vine' pattern, 8.5cm, the other 'Pickle Leaf Daisy', 9.5cm, a butterboat in the 'Butterboat Formal Rose', 9cm, crescent mark, an hors d'oeuvre dish in the 'Willow Rock Bird' pattern, 7cm, and two Caughley leaf pickle dishes in the 'Fisherman and Cormorant' pattern, 9cm and 11.5cm (10)

£500 - 800

65

A large Philip Christian slop bowl, circa 1770

Painted in blue with the 'Dragon' pattern, 21.7cm diameter

£500 - 800



64



65



66

66

A Worcester small mug, circa 1755-65

Of cylindrical form with a grooved handle, painted in blue with the 'Walk in a Garden' pattern, 8.5cm high, workman's mark

£500 - 800

67

A large Worcester cornucopia, circa 1757-60

Painted in blue with the 'Cornucopia Prunus' pattern, 29.5cm, crossed swords mark

£500 - 800



67



68

68
A group of seven Worcester sparrow beak jugs and a related shard, circa 1765-85

Comprising a jug printed in blue with the 'Mother and Child and Man Fishing' pattern, 9.4cm high, 'W' mark, a jug printed in blue with the 'circled landscape' pattern and a related shard, 9cm high, crescent mark, a jug printed in black with ruins, 7.9cm high, a jug painted in blue with the 'Landslip' pattern, 8.2cm high, crescent mark, a jug with a scalloped rim printed in blue with the 'Birds in branches' pattern, 9.8cm high, crescent mark, another jug printed with the 'Birds in branches pattern', 9cm high, crescent mark, and a jug painted in blue with the 'Cannonball' pattern, 9cm high, crescent mark (8)
£500 - 700

Provenance: The Geoffrey Godden Collection

69
Three Worcester coffee cups, a bowl and a plate, and a Caughley saucer, 18th century

Comprising a 'Mansfield' coffee cup, 5.5cm, open crescent mark, a 'Cannonball' coffee cup, 5.5cm, a 'Landslip' coffee can, 6.2cm, open crescent mark, a 'Gazebo' pattern bowl, 12cm diameter, workman's mark, a fluted plate printed with the 'Pine Cone Group', 19.5cm diameter, hatched crescent, the Caughley saucer painted with the 'Girl with a parasol' pattern, 12cm diameter, painted mark (6)
£350 - 500



70

70

A Worcester sparrow beak jug, circa 1755-6

Of plain shape with a grooved loop handle, painted in blue with the 'Rock Warbler' pattern, with a bird perched upon a rock besides a branching plant, fence and a winged insect in flight, 7.8cm high, workman's mark

£700 - 900

71

Three Worcester sparrow beak jugs, 18th century

One painted with a version of the Chinese family pattern, 8cm, another painted with puce flower spray panels within red ground diaper ground bands, 8.5cm, the other with flower sprays, 9cm (3)

£400 - 600



72

72

A Worcester punch pot or large teapot and a cover, circa 1755

Of globular shape with a pointed finial, painted in light blue with a rare design of a bird perched on a branch, two further birds in flight above, another floral spray to the reverse, beneath a floral and diaper border, the cover probably married, with a different border and painted prunus, 17.5cm high, scratch cross mark, workman's mark of letter C in blue (2)

£600 - 800

No similar design in blue and white appears to have been recorded. The style of bird painting combined with exotic oriental flowers occurs in enamelled decoration on larger mugs and jugs, for example the large jug from the Sam Cole Collection sold by Bonhams 10 December 2008, lot 124.



73



76



75



77



74

73

A reference collection of Worcester and other 18th century factories, circa 1760-90

Including two tea canisters in the 'Gillyflower' and 'Fence' patterns, 14.5cm and 11cm, three sparrow beak jugs, one in the 'Fence' pattern, the other two 'Three Flowers', largest 12cm, a butter tub and cover in the 'Fence' pattern, a relief moulded jug, a sucrier and cover, a 'Dolphin ewer' creamboat, a Caughtley jug, tea canister and coffee cup, in the 'Gillyflower', 'Birds in Branches' and 'Fisherman and Cormorant' patterns, and three other pieces (17)

£350 - 500

74

A Worcester pierced dessert basket, circa 1765

Of circular form, the border pierced with a band of interlocking circles applied at the intersections with florets picked out in pink against a pale yellow exterior, the interior painted with flower sprays, 19.5cm diameter

£500 - 800

75

Two Worcester bowls, circa 1780-1785

Both printed with the rare variant of the 'Mother and Child' pattern with an additional standing figure holding a flower pot, the reverse of each bowl printed with 'La Terre' pattern of a kneeling Chinese figure and a 'Long Eliza' by a tall jardinière, the interiors printed with pomegranates and vines in a basket, 11.5cm and 15.1cm diam, crescent marks (2)

£300 - 400

These interesting prints are discussed by Branyan, French and Sandon, patterns II.A.12 and II.A.13. The small size of bowl with the additional figure prints is particularly unusual

76

A Worcester bowl, circa 1765-75, and a Worcester basket, circa 1770-85

The bowl painted in blue with the 'Precipice' pattern, 23cm diameter, open crescent mark, the oval basket printed in blue with the 'Pine Cone Group', 23cm wide (2)

£500 - 600

77

Two Worcester teacups and saucers, circa 1780 and 1770

One of reeded form decorated in the 'Dalhousie' pattern of painted landscape panels and fruit sprays, within a blue and gold border, crescent marks, the other fluted, decorated with the 'Jabberwocky' pattern, within shaped turquoise ground borders, cup with a square mark (4)

£500 - 800



78

78

A Worcester teapot and cover, circa 1770

Of ogee form with a double entwined handle, the cover with a flower finial, enamelled in 'Dry Blue' with flower sprays, with a gold dentil rim, 17cm, pseudo Meissen mark (2)

£500 - 800

79

A Worcester pierced dessert basket, circa 1765

Of flared circular form, the border pierced with a band of interlocking circles applied at the intersections with florets picked out in yellow and green, the interior painted with floral sprays, 17cm diameter

£450 - 600

80

A group of Worcester teawares, circa 1780-1800

Comprising a sucrier and cover decorated with a Japan pattern, 13cm, square mark, a teabowl and slop bowl with similar patterns, square marks, a sugar bowl and plate in the Queen Charlotte pattern, 10.5cm and 19.5cm, and three coffee cups with ear-shaped handles decorated with the Rich Queen's pattern, 6.5cm (9)

£500 - 800

81

A reference collection of English porcelain, late 18th century

Including a pair of Chelsea plates, painted around the rims with small panels of birds, flowers to the centre, 21.5cm, red anchor marks, a Chelsea cup, a Bow triple-shell centrepiece, on a base modelled with shells, painted in blue with a simple border pattern, 21.5cm, a small Worcester teabowl and saucer, printed in monochrome with the 'Tea Party' print by Robert Hancock, signed R Hancock Fecit, saucer 11.5cm diameter, two Bristol fluted cups with green enamelled festoons of flowers, X 17 in blue, a Bow sauceboat, shell salt and a polychrome bowl and five other pieces (16)

£500 - 800



85

82

A group of English porcelain, late 18th/early 19th century

Including two Derby teapot stands, a Flight Barr and Barr coffee can and saucer, the cup painted with landscapes, titled 'Mountain of Benmore, Scotland' and 'Loch Fyne, Scotland', a Flight Barr and Barr Japan pattern trio of coffee can, teacup and saucer, a Worcester teacup and saucer painted with Chinese figures, seven other coffee cans and a Derby saucer (17)

£300 - 500

83

A group of English porcelain, 18th century

Comprising a Worcester guglet, printed in blue with the 'Pinecone Group', 24.5cm high, hatched crescent, a Worcester mug, printed in blue with the 'Natural Sprays Group', 9cm high, a Worcester sparrow beak jug, of plain shape, painted with a rose spray, with red 'crowsfoot' border to the inside, 8.5cm high, a teabowl printed in black with the 'Tea Party' print, four coffee cups, a 'Queen Charlotte' pattern teabowl and saucer and a Derby pickle dish (11)

£400 - 600

84

A reference collection of English porcelain tea and coffee wares, circa 1760-90

Including a Worcester fluted coffee cup and saucer, painted in blue with the 'Prunus Root' pattern, a Bristol coffee cup, painted in blue with a flower spray, X mark, six further coffee cups, a toy Worcester 'Three Flowers' teabowl, fourteen further teabowls by Worcester, Caughley and others and six saucers including a Liverpool example (30)

£300 - 500

85*

A Derby shell pickle stand, circa 1760

Of elaborate form with a tier of three deep scallop shells, the interiors painted in blue with flower sprays, scattered sprigs and insects framed by cell borders, a raised central column supporting a further scallop shell dish painted with a Japanese style bird on a banded hedge design, this dish unusually modelled inside with a tiny pickle or gherkin picked out in blue, the stem and base applied with a profusion of modelled shells among an openwork arrangement of seaweed, all heightened in blue, 22.5cm high

£800 - 1,000

Provenance: The Dwight Lanmon Collection.



86



87



88



89

86

A good pair of Derby candlesticks of Mars and Venus, circa 1765
Standing before tree stump columns entwined with flowers, Mars with a shield at his feet, Venus with a figure of cupid, the scroll moulded bases applied with flowers and edge in turquoise and gold, the nozzles above leaf-moulded drip pans, 26.5cm (2)
£800 - 1,200

87

An early Derby figural candlestick, circa 1758
The stem modelled with a cherub entwined with fruiting vines, the spreading base painted with flower sprays and sprigs, with moulded edge picked out in green, puce and gold, 22.5cm, with later replacement nozzle
£500 - 800

88

A pair of very rare Derby baskets of unrecorded form, circa 1758-60
Of circular form with seven oblong apertures, the bars applied with flower heads, with a red diaper rim to the interior, 10cm diameter (2)
£500 - 800

89

Two Derby figures of John Milton and William Shakespeare and another of Old Father Time clipping the wings of Cupid, circa 1790 and 1770
The figures both standing beside plinths with puce painted cloaks, gilt lined canted rectangular bases, 27cm, patch marks, the other figure group on scroll moulded base with various attributes, 21cm, patch marks (3)
£500 - 800



90

90

A pair of Derby cherubs, a Ralph Wood porcelain group, a Derby figure of the Garland Shepherdess and another of a putto, 18th century

The Derby cherubs standing holding a basket and wearing flower garlands, 13cm, the Ralph Wood group modelled as a girl and a boy with a birds nest, 16cm, the Derby shepherdess wearing pink bodice and floral decorated skirt, 16.5cm, the putto standing and wearing a flower garland, 12cm (5)

£600 - 800

91

Two Derby figure groups and a small figure of a boy, circa 1775-80
One figure group modelled with a boy and girl beside a tree, emblematic of Summer and Autumn, 22.5cm, the other emblematic of Music, modelled with a standing female playing a flute, a cherub below holding a violin, 22cm, incised no 217, the boy playing a pipe with a dog at his feet, 10.5cm (3)

£500 - 800

92

A Derby figure of a man, circa 1762-65, another of a shepherd, circa 1770, and a Torquay pottery reproduction Harlequin candlestick, 20th century

The figure of a man standing beside a tree stump, one branch applied with a candle nozzle, the scroll moulded base edged in green and gold, 25cm, the shepherd beside a candle nozzle, a dog at his feet, 23.5cm (3)

£500 - 800

93

A Derby candlestick group of two sheep, circa 1760-62

The stem modelled with branches applied with colourful flowers, the scroll moulded base edged in puce, 20cm

£500 - 800

94

A Derby figure of a shepherdess, circa 1770

The standing figure wearing a yellow bonnet and floral decorated skirt, a sheep with a flower garland around its neck jumping up at her side, on scroll moulded base with detail picked out in turquoise and gold, 19cm high, patch marks and incised marks, 'No.60 2 d size'

£150 - 200



91



92



93



95

95

A Chelsea Derby solitaire set, circa 1780-85

Painted in the French style with puce classical cupids holding various objects reserved on a gold lined ground, reserving small puce painted birds, comprising a bullet-shaped teapot and cover with wishbone handle, sucrier and cover, cream jug, cup and saucer and shaped tray, tray 25cm wide, teapot 11cm high, anchor and CD mark to tray, sucrier with anchor in gold (8)

£1,200 - 1,500

See John Twitchett, Derby porcelain plate 159 for a similar sucrier and cover. This style of decoration is traditionally attributed to Richard Askew although clearly different hands contributed to this cabaret.



96

96

A Derby milk jug and a saucer dish, circa 1785-90

The milk jug of straight-sided conical form with a wishbone handle and sparrow beak spout, decorated with pattern number 118 with a circular landscape panel to the interior, the exterior gilded with zig zag and linked chain borders on a salmon pink ground, 7.5cm, the saucer dish in the same pattern with a circular landscape panel depicting a fisherman in the foreground, 19.5cm, crown, crossed batons and D mark in puce, pattern number 118 (2)

£600 - 800



97

97

A very rare Derby plate painted with birds and another in the style of Richard Dodson, circa 1800-1820

The first with a circular panel painted with four birds flying in a blue sky, within a trailing border interspersed with pink and green flowerheads and a similar outer border, 24.5cm, puce mark, the other with a group of fancy birds perched on a tree within an elaborately gilded border, 22cm, mark in red (2)

£500 - 800



98

98

A group of Derby teawares in pattern 230, circa 1790

Painted with oval landscape vignettes in the manner of Jockey Hill depicting Derbyshire views, including Breadsall, 'Near Mayfield' and 'On the Derwent' each titled below, within narrow gilded borders, comprising three teacups, two coffee cups, three saucers, a milk jug, a sucrier and cover and a saucer dish and a plain slop bowl, crown, crossed batons and D marks in blue, also pattern numbers and titles of landscapes (13)

£600 - 800

99

A Derby teabowl and saucer by Zachariah Boreman, circa 1785-90

Finely painted with circular landscape vignettes within blue line and gilt trailing foliate borders, crown, crossed batons and D marks in puce, pattern number 86 (2)

£400 - 600



99

See John Twitchett Derby Porcelain, plate 178 for a saucer dish in the same pattern

100

A Derby coffee cup and saucer and slop bowl by Zachariah Boreman, and a beaker, circa 1775-80

The coffee cup and saucer and slop bowl fluted, painted with circular landscape vignettes within blue line and gilded borders, *saucer 13.5cm, slop bowl 16.5cm*, pattern number 86, crown, crossed batons and D marks in puce, the beaker of plain tapering form, painted in the manner of Edward Withers with colourful sprays and sprigs of flowers, red line rim (4)

£500 - 800



100

See John Twitchett, Derby Porcelain plate 178 for a saucer dish in the same pattern.



103



101



102

101

A pair of Derby figures of John Milton and William Shakespeare, circa 1790

Both standing beside plinths, their arms resting on a pile of books, with puce-lined cloaks, 32cm, patch marks (2)

£500 - 700

102

Three Derby botanical plates, circa 1785-90

'Adonis Vernalis', 'Dianthus barbatus', and 'Rudeckia', within gilded borders to the rim, 23cm, crown, crossed batons and D marks in blue, with titles also in blue (3)

£500 - 700

103

A Derby figure of a man, circa 1760-65 and another similar

The first modelled with a man seated on a tree stump, holding a large shell painted to the inside with a butterfly, wearing a patterned waistcoat, green jacket and red breeches, the base applied with flowers, 18cm, the other figure similarly modelled, with floral painted shell, 18.5cm (2)

£500 - 800



104

104

Two Derby teacups, a coffee cup and two later saucers, circa 1785-90 and 1820

All fluted and painted with pattern number 117 by Zachariah Boreman, depicting oval landscape vignettes reserved on a salmon pink ground with gilded chain and zig zag borders, crown, crossed batons and D marks in blue and red (5)

£500 - 800

105

Three Derby coffee cups and saucers and a saucer dish, circa 1785-90

Painted with pattern number 118 of circular and oval landscape vignettes on a gilded and salmon pink ground, saucer dish 19.5cm, crown, crossed batons and D marks in puce (7)

£500 - 800



105

See John Twitchett, Derby Porcelain, plate 22 for a trio in pattern 118.



106

106

A Derby coffee can, circa 1785-90

Painted in the manner of Zachariah Boreman, with an oval landscape vignette, reserved on a taupe ground with gilded borders, 7cm high, 7.5cm diameter, crossed batons and D mark in blue and script title 'On the River Manifold Staffordshire' £500 - 800

107

A pair of Derby figure groups, late 18th century

Modelled as a hairdresser, the other as a shoemaker, the male figures attending to their respective female, wearing brightly patterned costumes, the circular bases pierced and moulded with scrolls, 19.5cm, pseudo Meissen marks (2) £500 - 700

108

An associated pair of Derby figural candlesticks, a cherub candlestick, circa 1770, and a pair of seated figures of children, circa 1830

The candlesticks modelled with a standing man playing pipes, the woman gathering flowers in her apron, a dog and sheep below, with extensively applied bocage, scroll moulded bases picked out in puce, turquoise and gold, 27.5cm, the cherub seated next to a stem applied with flowers, 18cm, the children with single candlestick, on scroll moulded bases, 14.5cm (5)

£500 - 800

109

A Derby figure group of a dancing couple, circa 1790

Wearing brightly patterned costumes, the scroll moulded base picked out in gold, 18.5cm, pseudo Meissen mark £500 - 700



108



107



109



114



111

110

A Swansea oval moulded dish, circa 1815-17

The border with C-scroll moulding, locally painted with a central rose spray and small flower sprigs around the border, *26cm wide*
£500 - 600

111

A Swansea plate from the Burdett-Coutts service and a Swansea shell-shaped dessert dish, circa 1815-17

The plate painted in the Sims workshop in London, with a basket of colourful flowers resting on a grassy bank, within gilded border and dentil rim, *23cm diameter*, the shell-shaped dessert dish painted with a Japan pattern, *21cm*, script mark in red (2)
£600 - 800



115

It is thought that the Burdett-Coutts service was ordered by the banker Thomas Coutts from Mortlocks, probably following his marriage to the actress Harriet Mellon in 1816.

112

A pair of Swansea shell-shaped dessert dishes, circa 1815-17

The borders painted with flower sprays and sprigs on a pale green ground, within gilded borders, *21cm (2)*
£800 - 1,200

113

A group of Swansea porcelain, circa 1815-17

Comprising an ozier moulded teapot and cover, with gilded detail, *16cm high*, script mark in red, a teacup of French fluted form, *5cm high*, upper case mark in red, another teacup painted with floral medallion pattern 219, *6.2cm*, a plate decorated in pink, blue and green scrolling pattern, no.478, *21cm*, a Japan pattern plate, no.264, *21cm*, and another plate with formal gilt decoration on a pale blue border, *21cm*, upper case mark in red (7)
£500 - 700



113

114

A Swansea plate by Henry Morris, circa 1815-17

Painted with sprays of flowers within a plain gold rim, *21cm wide*, SWANSEA mark in red
£500 - 700

115

A Swansea part tea service, circa 1815-17

Painted with gilt foliage around the borders, comprising two oval dishes, *31.5cm*, two saucer dishes, *21cm diameter*, two slop bowls, *16.5cm diameter*, a jug and a breakfast cup and saucer, some pieces with upper case mark in red and pattern no.449 (9)
£800 - 1,200



112



116

116

A Nantgarw milk jug and trio of teacup, coffee cup and saucer, circa 1818-20

The milk jug of London shape, decorated in London with a frieze of evenly spaced green and gilt dots below a gilt foliate band, 10.2cm high, the trio of plain form, similarly decorated, the teacup and saucer with a flower spray to the centre (4)

£1,000 - 1,200

117

A group of Swansea teawares, circa 1815-17

Comprising a teapot, cover and stand, a teacup, coffee cup and two saucers painted with gold foliate, pattern no.442, upper case marks and pattern no.in red, and two slop bowls and a teacup and saucer with formal gilded borders with fine green enamel detail (11)

£600 - 800

118

A Swansea twig-handled dessert dish and a Swansea cup and saucer, circa 1815-17

The dessert dish of rectangular form, painted with flower sprays, with gilded rim and handles, 28cm, the cup and saucer painted in the rare pattern no.408 of rose panels reserved on a blue ground with gilded vine detail, upper case mark in red and pattern number (3)

£500 - 700

119

A group of Swansea porcelain, circa 1815-17

Comprising a plate, slop bowl, teacup and saucer painted with the poppy head pattern, no.197, script marks, a trio of a teacup, coffee cup and saucer painted with flower borders on a green speckled ground, pattern no.493, and a plate, the border with C-scroll moulding, and locally painted with flower sprays, 20cm diameter, upper case mark (8)

£500 - 700

120

A Swansea moulded square dessert dish and a Swansea cup and saucer, circa 1815-17

The dessert dish with C-scroll and foliate moulding to the corners, painted with flower sprays and wild strawberries, within gilded borders, 21cm, the cup and saucer painted with a frieze of green and gold foliate, the saucer with upper case mark in red (3)

£500 - 600

121

A Swansea breakfast cup and saucer, a Swansea plate and two Swansea dishes, circa 1815-17

The cup and saucer painted with pink rose buds and gilded detail, the plate painted with a Chinese garden, 21cm diameter, the two dishes comprising a small stand and a dish, painted with a Japan pattern, 18.5cm and 21.5cm diameter, both with upper case marks in red (5)

£500 - 700



117



118



119



120



121



122



122

A pair of Flight, Barr and Barr dessert dishes, circa 1820-30

Square with shaped gadrooned rims, decorated with a rich Japan pattern depicting a chinoiserie garden with a fence, rockwork and a fancy bird amidst flowers, 23cm, faintly impressed marks (2)

£500 - 800



123

123

A group of Barr, Flight and Barr and similar teawares, early 19th century

All decorated in a rich Japan pattern, including flowers, rockwork and other motifs, comprising nine Barr, Flight and Barr coffee cans, a teacup, thirteen various saucers, a saucer dish, three similar Flight, Barr and Barr cups and saucers and two unmarked saucers, impressed marks (32)

£600 - 800



124

124

A Flight, Barr and Barr trio and a dessert plate, a set of four Flight, Barr and Barr dessert plates and a matching slop bowl, a similar pair of Barr, Flight and Barr plates and a Chamberlain saucer dish, circa 1810-30

The trio comprising teacup, coffee cup and saucer, gadrooned rims, richly decorated with a Japan pattern including a pagoda, fence, rockwork, flowers and birds, *plate 22cm*, the other pieces with similar rich Japan patterns, *plates 20.5cm*, printed, impressed and incised marks (12)

£500 - 800



125

125

A Flight and Barr teapot and cover, a milk jug and sucrier and a Barr, Flight and Barr teapot stand, circa 1800-10

All decorated with a rich Japan pattern including bold flowers and rockwork, the teapot and jug of flattened oval shape with a scalloped rim, *teapot 18.5cm, jug 13cm*, the sucrier of boat shape with double bifurcated handles, *17.5cm wide*, the stand *18cm*, incised B and impressed BFB marks (5)

£500 - 800

126

A Barr, Flight and Barr teapot, cover and stand, milk jug, boat-shaped sucrier and slop bowl, circa 1810-13

The teapot oval with a scroll handle, decorated with a rich Japan pattern including bold flowers, rockwork and birds, *teapot 26cm wide, sucrier 18cm wide*, incised B and impressed BFB marks (6)

£500 - 800

127

A Barr, Flight and Barr sauce tureen and cover, circa 1810

Of urn shape with double eagle's head and ring handles, the cover with a flame finial, decorated with a rich Japan pattern, *19cm*, impressed BFB mark (2)

£500 - 800



127



126



128



129

128

Four Flight and Barr trios, two further coffee cans and a saucer and three saucer dishes, circa 1800

The cups with ring handles, decorated with a rich Japan pattern including bold flowers, rockwork and birds, the trios each comprising teacup, coffee can and saucer, incised B marks (18)

£500 - 800

129

A group of Flight, Barr and Barr dinner wares, circa 1820-30

Decorated with a bold Japan pattern depicting a Chinese figure standing in a garden setting, within an ornately decorated border, comprising two dessert plates, two dinner plates, two soup plates, a rectangular tureen and cover, 23cm, and a coffee can and saucer, printed and impressed marks (10)

£500 - 800

130

A pair of Barr, Flight and Barr dessert plates and a Flight and Barr example in the same pattern, a Flight and Barr plate and a Flight, Barr and Barr plate, circa 1800-30

The three richly decorated with a panelled Japan pattern, 21cm, printed and impressed marks, the other two with similar rich Japan patterns, 20.5cm and 21cm, incised and impressed marks (5)

£500 - 800

131

A group of eight Worcester Japan decorated cups and saucers, circa 1800-1830

Comprising a Flight and Barr example, with rich Japan pattern including a pagoda, flowers and trees, ring handle, three matching Barr, Flight and Barr examples, three Flight, Barr and Barr 'London' shaped cups and saucers and an odd Flight and Barr cup and saucer also with a rich Japan pattern, impressed and incised marks (16)

£500 - 800

132

A Flight, Barr and Barr teacup and saucer, a Chamberlain trio and a Flight, Barr and Barr cabinet cup and saucer, circa 1820-30

The Barr, Flight and Barr cup and saucer with monochrome lion and crown crest, within an apricot and gilt border, impressed marks, the trio with a wide band of roses and violets on a solid gilt ground, pattern number 924, the cabinet cup and saucer with three claw and ball feet, painted with colourful flower sprays, gilded gadrooned rims, 6.5cm and 12.5cm diameter, unmarked (7)

£500 - 800



130



131 (part)



132



133

133

A pair of Flight, Barr and Barr spill vases, circa 1825

Of trumpet shape, well painted, possibly by John Pennington with continuous friezes of rustic figures in open landscapes, the bases with a lapis blue ground and bands of bright gold, gilt borders of bellflowers and palmettes inside, 12cm high, script marks (2)

£750 - 1,000

134

A pair of English porcelain 'Warwick Vase' icepails and covers, circa 1835

Probably Coalport, painted with flowers reserved on an apple green ground, the handles formed from entwined branches which extend into a fruiting vine running around the rim, the domed covers with stylised fruit finials, 39cm high (4)

£600 - 800

135

A Spode letter rack, circa 1825

Standing on four paw feet, the shaped back in the form of a stylised leaf flanked by two conical points with acron finials, edged with fine beading, painted with a figure by a rural cottage, 12cm high, painted mark SPODE 1926 in red

£250 - 300

136

A Rockingham miniature teapot and cover, circa 1830

Encrusted with colourful flower sprays, 7.5cm high, printed griffin mark in puce, inscribed Cl.2 mark in gold (2)

£500 - 700

137

A pair of rare Davenport botanical dessert dishes and a pair of stands for dessert baskets, circa 1807-12

In hybrid hard paste porcelain, the dishes of shaped rectangular form, finely painted with 'Winged Passion-Flower' and 'Sweet Pea', within gilt line borders, 25.5cm, titles in neat block capitals to the sides, impressed P3 crown and Davenport mark, the stands of rounded rectangular form, the borders pierced with a basketwork design, finely painted with 'Fig-Marigold' and 'Shrubby Chironia', 25.5cm, titles in neat red capitals, impressed P3 anchor and Davenport marks (4)

£500 - 600

Provenance: From the Joyce Mountain Collection of Davenport Pottery, Porcelain and Glass, sold in our Bond St rooms September 2005

See Lockett and Godden (1989), p.236, pl 239 & 240, where the important service from which these dishes come is discussed.



134



135



136



137



139



138



140



141

138

A pair of London-decorated vases, a jardiniere with Sevres style decoration and a coffee can, 19th century

The pair of vases of campana shape, painted with baskets of flowers on a marble ledge, 19.5cm, the jardiniere with Sevres-style decoration of panels of birds in the manner of Randall, on a bleu celeste ground, 23.5cm, the can with foliate decoration on a blue ground (4)

£500 - 700

139

A Chamberlain & Co. two handled cabinet cup, cover and stand, circa 1848, and a Grainger jug, circa 1875

The former with pierced honeycomb and double walled, with formal gilding and coral-coloured bosses, 14cm high, script marks, the Grainger cream jug double-walled with pierced and jewelled decoration, 10.5cm high, impressed shield mark (4)

£500 - 800

140

A pair of Coalport vases and covers, circa 1900

Painted with landscape panels to one side and flower panels to the other side, reserved on a dark blue ground with dense foliate gilt decoration, one titled 'Kilchurn Castle', the other 'The Kyles of Skye', 30cm high, printed marks, and painted marks V.7222, M/S 228 (4)

£500 - 600

141

A Coalport vase, circa 1870-75

Decorated in the 'Cashmere' pattern with a dense formal scrollwork ground, 20.5cm high, puce ampersand mark

£500 - 600

For a discussion on this pattern and illustrated examples see Michael Messenger, Coalport, p.263-4

142

Two Derby coffee cans and saucers, 19th century

Possibly King Street factory, painted with circular landscape panels reserved on a blue ground with gilded decoration, marks and titles in puce (4)

£300 - 500

143

A large collection of British porcelain teacups, 19th century

Factories including Minton, Coalport, Spode and Ridgways, approximately one hundred cups and a small selection of cups and saucers (qty)

£500 - 800



144

144

A pair of Copeland & Garrett square plaques, 19th century

Painted with sprays of flowers, 15.5cm square, printed mark in green, in modern gilt frames (2)

£500 - 700

145

A group of flower-encrusted English porcelain, circa 1835-40

Comprising a rectangular inkstand with two cornucopiae flanking a vase and cover, applied with fine quality flowers, 34cm wide two baskets painted and applied with flowers, one pink, the other with green and gold stripes, 31.5cm and 27cm wide and a pair of bottle vases and covers similarly decorated, 25cm high, pattern number 1559 in gold (11)

£500 - 600

146

A pair of Grainger & Co reticulated vases, dated 1892

Of globular form, the flared neck and rim with pierced panels, the body painted in red and gold with foliate sprays reserved on an ivory ground, 15cm high, printed marks (2)

£400 - 600

147

A pair of Derby Crown Porcelain twin handled vases, one dated 1887

Decorated with insects amidst gilded hawthorne sprays on a dark blue ground, 26cm high, printed marks (2)

£500 - 800

148

A pair of Minton Persian style vases, dated 1888

With panels of gilded foliage, flowerheads and garlands applied onto a yellow ground, 34cm high, printed and impressed marks (2)

£500 - 600

149

Two Derby (King St) theatrical figures, 'Billy Waters' and 'African Sall', early 20th century

The standing figures on circular bases with titles in gold, 9.5cm high, crown and SH and D marks painted in puce (2)

£300 - 500



146



147



148



149



150

150

A set of ten Minton models of the King's Beasts, circa 1955

Modelled by James Woodford and issued in a limited edition, comprising The Lion of England, The Unicorn of Scotland, The White Horse of Hanover, The White Greyhound of Richmond, The Red Dragon of Wales, The Yale of Beaufort, The Falcon of the Plantagenets, The Black Bull of Clarence, The White Lion of Mortimer and The Griffin of Edward III, richly decorated in gold, silver and bright enamels, 15cm, marks in gold, original boxes
£500 - 800

Originally modelled as part of the Queen's Vase, made to celebrate the coronation of Queen Elizabeth II, and subsequently issued as separate models. Similar models from the Minton Museum sold in our Bond Street rooms 5 October 2004, lot 116

151

A group of English porcelain, 19th and 20th century

Including five small Royal Worcester plates painted with birds by William Powell, 12cm diameter, a Davenport small circular basket, with Imari pattern, 7cm diameter, printed mark and painted no.6065, ten other various small baskets, a group of various miniature cups and saucers, a Crown Staffordshire candle extinguisher, a chamberstick, and three Chamberlains plates, painted with flower sprays within gadrooned borders, impressed marks
£300 - 500

152

A group of English porcelain, early-mid 19th century

Comprising a Flight and Barr saucer and associated Barr, Flight and Barr coffee can, decorated with a bold Japan pattern, a Minton teacup and saucer, painted in puce with panels of classical putti within raised gilded borders, ermine marks, four coffee cans, a New Hall milk jug and saucer and a dessert dish (11)
£350 - 400

153

A pair of Minton vases, circa 1880

Of ovoid form, painted with brightly coloured chrysanthemums on a shaded ground, indistinctly signed, 22cm, printed marks in gold (2)
£200 - 300

154

A group of Derby porcelain, 19th and 20th century

Comprising a pair of Derby (King St) vases, painted with flower sprays, 8.5cm high, painted red marks, the Royal Crown Derby comprising two coffee cans and saucers, an oval dish, 23cm wide, and a domed match striker and cover, all in Imari palette, and a small dish with a looped handle, decorated with flower sprays within blue borders, 12cm diameter (10)
£300 - 500



155

155

A Royal Worcester jardinière, dated 1917

Decorated with peacocks amidst trees by George Johnson, signed, 20.5cm high, 21.5cm diameter, printed mark and shape no. H276
£700 - 1,000

156

A Royal Worcester vase by Edward Salter, dated 1892

Of bottle shape with a flaring trumpet neck, framed by two gilt dolphin shaped handles, the body painted with a titled scene of The Mumbles, the lighthouse dominating a stormy seascape, its light picked out in delicate gilding, on a matt ivory glaze, the reverse painted with a small vignette of a crashing wave, signed E. Salter, 27.7cm high, puce marks, shape number 1327, gilder's initials HS
£500 - 700

157

A Royal Worcester blush ivory planter, dated 1895

Of rectangular form with satyr masks to the border, decorated with flower sprays on a blush ivory ground, 40cm wide, printed mark, shape no.1690
£200 - 300

158

A Royal Worcester inkwell and cover, dated 1862, a Royal Worcester 'Boy with Drum' taperstick, circa 1870, a moon vase, dated 1874 and two posy vases, dated 1883

The inkwell modelled as 'Ariosto's Ink' in Renaissance style painted in 'Raphaelesque' colours, 13.5cm high, printed green mark, (lacking liner), the taperstick also decorated in 'Raphaelesque' colours, 11.5cm, impressed mark, the moon vase embossed with Japanese storks in the manner of Edouard Bèjot, on an ivory ground, 21.5cm, printed mark, the posy vases of drum shape, one painted with feathers, the other with a bird, 6.3cm, printed marks (6)
£500 - 700



159

159

A Royal Worcester dessert service, dated 1914-18

Painted with castle scenes by George Johnson, most pieces signed, reserved on a powder blue ground with gilt foliate sprigs, comprising two square dishes, two oval dishes and twelve plates, printed factory mark, retailer's mark 'Maple, London' and script titles (16)
£600 - 800

160

Two Royal Worcester figures, dated 1881 and circa 1885, and a pair of Derby candlestick figures, circa 1835

The former comprising Queen Elizabeth I, decorated in matt enamels and gold, 15.5cm, and a menu-holder figure of a boy from the Down-and-outs series, 15cm, the pair of Derby figures of a boy and girl seated with flowers, 14cm, crossed swords marks in blue and incised numerals (4)
£300 - 500

161

A Royal Worcester cabinet cup and saucer, a pierced plate and a basket, late 19th century

The small reticulated cup and saucer, circa 1880, with pierced honeycomb jewelled in turquoise and coral, the saucer 10.5cm diameter, impressed marks, the pierced cabinet plate, dated 1891, in ivory and raised paste gilding, 22cm diameter, puce mark, shape no.1120, the basket dated 1899, with rococo style moulding picked out in ivory, bronze and soft coral, 19.5cm high, printed green mark, shape no.1568 (4)
£500 - 800



164



163



162



167

European Ceramics

162

A Castelli plaque or tondo, 18th century

Painted with a landscape, a large tree in the foreground, some figures and the sea beyond, 23cm diameter, in giltwood and ebonised frame
£600 - 800

163

Two large Bellarmine jugs, late 17th and early 18th century

Ovoid with cylindrical necks, moulded with bearded mask portraits, florets, and a moulded panel, 42cm and 40cm
£500 - 800

164

A group of ten Dutch Delft plates, 18th century

Painted with the 'Peacock Pattern' of flower filled vases with fanned feathers, within yellow rims, four plates 23cm diameter and six 13cm diameter (10)
£500 - 700

165

A rare and early Höchst sugar bowl and cover, circa 1750-55

Painted in puce with a Turkish figure and landscapes, 12.5cm diameter, wheel mark in red (2)
£300 - 500

Provenance: John Bacchus Dykes (by family repute). John Bacchus Dykes was an English clergyman and hymnist, and composed over 300 hymns.

166

A Vienna cup and saucer, circa 1765-70 and three other pieces, 20th century

The Vienna cup and saucer painted in monochrome with landscape scenes, shield mark in blue, a Meissen trumpet vase, 9.5cm, an Onion pattern leaf-shaped pickle dish, and a Berlin fish pin tray (5)
£200 - 300

167

A Doccia figure of a man in Turkish costume, circa 1760

Wearing a long jacket with puce flowers and a red turban with striped draped cloth on a lead-glaze 'allo stagno' ground, his yellow flower-embellished cape trailing over the plinth, 12cm high
£600 - 800



168

168

A pair of Ludwigsburg figures of woodcutters, circa 1775

The woman holding some logs, the man with an axe and a club, 12.5cm high (2)

£600 - 800

169

A Fürstenberg figure of Cleopatra and a Höchst figure of a boy, 18th century

Cleopatra standing nude with a snake entwined around her, 15cm high, painted mark in underglaze blue, the boy standing holding a basket of shells, 18cm, wheel mark in underglaze blue (2)

£500 - 600

170

A Limbach tea canister and cover and another tea canister, 18th century

The first with sloping shoulders and finely reeded body, puce painted with flowers and foliage, 16.5cm, painted LB mark, the other of canted rectangular form, painted in puce with European landscapes, 6.5cm, anchor mark (3)

£300 - 400

171

A Nymphenburg figure of Minerva, circa 1761-65, the decoration later

Wearing a helmet with red plume, a blue cloak over armour and a puce tunic, standing on a rectangular flat base holding the Medusa-shield with her left hand, 14.2cm high, factory mark of a shield impressed to rear of Medusa-shield

£500 - 700

Another example of this figure is in the Bäuml Collection, Munich (see Ziffer 1997, no. 153)

172

A Meissen figure and a Fürstenberg figure, 18th century

The Meissen figure standing with a large basket, a flower spray in his left hand, 14cm, indistinct mark in underglaze blue, the Fürstenberg figure modelled as a barefoot boy standing holding a basket of apples, 14cm, F mark in underglaze blue (2)

£500 - 600



169



171



172



173



175

172A

A rare Gotha potpourri vase, circa 1765

Painted in purple with classical figures, with gilded goat's mask handles and applied wreath, on a square base, 17cm high, 'R' in underglaze blue
£500 - 600

Provenance: John Bacchus Dykes (by family repute). John Bacchus Dykes was an English clergyman and hymnist, and composed over 300 hymns.

173

A Meissen waste bowl, circa 1735-40

Painted in underglaze blue with gilded detail with a bird and flower sprays issuing from rocks, the interior with a flower panel and arcaded pattern around the rim, 17.3cm diameter, crossed swords mark in underglaze blue
£800 - 1,200

174

A Meissen figure of the Marquis from the 'Cris de Paris' series, circa 1757-60

Probably outside-decorated, modelled by Peter Reinicke after a design by Christophe Huet, one hand tucked under his waistcoat, his other arm outstretched, a tricorne hat tucked below, wearing a yellow coat, and purple striped breeches, posed beside a tree stump on a scroll moulded base, picked out in gold and applied with a flower and leaves, 13cm high, impressed 36
£800 - 1,200

Similar models are illustrated in L. & Y. Adams, Meissen Portrait Figures, p. 115. Although the set of drawings for this second Cris de Paris series includes thirty-four designs, of which the last two drawings are the source for the present lot, there has been some dispute in recent years as to whether these elegantly clad figures actually belong to the Cris series, or instead represent courtly types. See Gunter Reinheckel, "Pariser Ausrüfer" in Weltkunst, 1.5.92, pp. 1161-65. Another figure was sold at Bonhams New Bond Street, 14 Nov 2007 lot 176.

175

A Meissen cruet stand, possibly from a service ordered by Frederick the Great, circa 1760-65

Of oval quatrelobed form, the scrolled handles with detail picked out in turquoise, painted with sprays of flowers within a yellow ground diaper border, 29cm wide, crossed swords mark in underglaze blue and painted numeral 3 in puce
£600 - 800



174



176

176

Two extremely rare Meissen dishes, circa 1730-35

Painted in a famille verte palette with three geese flanked by flowering plants and stylised rockwork, and another in flight overhead, with three sprigs of *indianische Blumen* to the rim, 22 and 21.8cm diameter (2)
£600 - 800

Provenance: The Busca Collection, Villa Serbelloni, Como, acquired in the 18th or early 19th century; By descent to the present owners

177

A Meissen saucer, circa 1735 and a coffee cup, circa 1745

The saucer with a quatrelobed landscape cartouche depicting two figures in a landscape, reserved on a burnished gold ground, 12.7cm diameter, crossed swords mark in underglaze blue and painted letter Z in gold, the cup painted with a Bergmann subject of mining figures in a landscape in the manner of G.B.Häuer, below a gilt scrollwork border to the rim and with a burnished gold interior, crossed swords mark (2)
£500 - 700

178

A Meissen figure group of Europa and the bull, late 19th century

After a Kändler model, depicting Europa seated on a bull with two attendant figures, the scroll moulded base with detail picked out in gold, 24cm high, crossed swords mark in underglaze blue and incised numeral 2697
£500 - 700

179

A Marcolini Meissen tureen and cover, late 18th century

Painted with vignettes of rustic figures below puce camaieu scale border, the finial formed as a putto with a cornucopia spilling flowers and fruit, the scrolled handles enclosing cauliflower and asparagus bundles, 35.5cm wide, crossed swords and star mark (2)
£800 - 1,200

180

A Meissen figure group of two cherubs, circa 1780

In dancing pose, clad in patterned and coloured drapes, the base scroll moulded and picked out in gold, 18cm high
£300 - 350



177

178

179

180





182

182

181



183

181

A Meissen figure of Cupid, circa 1870-80

After a model by Acier depicting Cupid holding aloft a long garland of flowers, on triform base inscribed 'Te les ramene', 16cm, crossed swords mark, incised F 12

£300 - 400

182

A pair of Meissen figures of Cupid, circa 1880-90

Modelled by Schwabe as Cupid hiding behind a flowering bush, wearing a feathered hat and holding an arrow, the other as Cupid victorious holding a shield, on circular marbled bases, 6.5cm, crossed swords marks, incised L 106 and L 123 (2)

£500 - 800

See Laurence Mitchell, Meissen Collector's Catalogue, page 79

183

Two Meissen figures of a girl and a boy, circa 1800 and 1880

The girl sitting holding a watch and with a book on her knee, 14.5cm, crossed swords and asterisk mark, impressed mark F49, the boy standing holding flowers, 16.5cm, crossed swords mark, incised mark E94 (2)

£500 - 800

184

A Meissen figure group of the 'Broken Bridge', late 19th century

After the model by M.V. Acier, depicting a swooning lady supported by a young man, whom she garlands with flowers, and Cupid at the rear, another winged putto at the front placing roses on the broken planks, the oval rocky base edged with a neo-classical border heightened in gilding, 24cm high, cancelled crossed swords mark in underglaze-blue, incised model number F.63, impressed numeral, red numeral 67,

£600 - 800

185

A Meissen pug dog paperweight, late 19th century

The recumbent dog on a rectangular stepped plinth base, painted with a landscape panel to the front and flower panels to the back and top, reserved on a dark blue ground with gilded detail, 19.5cm long, crossed swords mark in underglaze blue and script mark 'Königstein'

£600 - 800



184



185



186



187

186

A Meissen group of gardeners and a Meissen figure of Cupid, circa 1850 and circa 1870

The first after a model by Kändler, a young man seated on the rocky base, a potted plant resting on his knee, embracing a young lady who stands beside him, 17cm high, crossed swords mark, incised E66, the other modelled as Cupid seated at a table making hot chocolate, on scroll moulded base, 12cm, crossed swords mark, incised C97 (2)
£500 - 700

187

Five Meissen topographical plates, 20th century

One painted with a river landscape, a castle on a hill in the distance, 27cm diameter, another with a small boat on a shore, 27cm, and three other rural landscapes, two 27cm diameter, one 25cm, crossed swords marks in underglaze blue, impressed marks T22 (5)
£500 - 800

188

Four Meissen figures, 20th century

Modelled as a boy playing a recorder, 13.5cm, another of a boy holding a scythe with a basket of grapes on his back, 14cm, the third as a seated boy holding a hoe, 12cm, the fourth as a standing man holding a scroll, 16cm, crossed swords marks and incised and impressed numerals to all (4)
£500 - 800

189

Two Meissen figures, 20th century

One of the egg salesman from the 'Cris de Paris' series, 14cm high, the other of a trumpet player, 14cm, both with underglaze blue crossed swords marks and impressed numerals (2)
£600 - 800

190

A Meissen cabinet cup and saucer, late 19th century, a pair of Samson figures, and a Staffordshire porcelain jug

The cup and saucer fluted with six peg feet, painted with flowers and insects surrounded by applied flowers and leaves, saucer 14cm diameter, crossed swords marks, the figures in the Derby style with male and female musicians seated before bocage, 23cm, the named and dated jug titled in gilt 'George Robert Rowe Esq., M.D.F.S.A, 1845' and painted with a view of Brougham Hall (Westmoreland) 19cm (5)
£150 - 200



189



190



188



192

191

A Meissen figure of a woman, 20th century

Standing holding a sleeping baby in a crib, 14cm, crossed swords mark
£200 - 300



193

192

A pair of Meissen candelabra and a Meissen figure group, 20th century

The candelabra modelled as a seated boy and girl seated between two baskets, crossed swords marks and incised numerals 3024, the figure group of two lovers, 17cm, crossed swords mark and incised numeral 279, all with details picked out in blue and gold (3)
£500 - 800

193

Two Meissen models of pugs, and six other porcelain pugs, 20th century

The two Meissen models both recumbent with their heads facing back, 3.2cm high, crossed swords marks and impressed numerals, the other models comprising two seated pairs, 11cm and 12cm, and two other seated models, 7.5cm and 11cm (8)
£500 - 600

194

A Meissen figure from the 'Cris de Paris' series, 20th century

Modelled as a cook frying an egg over a furnace, wearing yellow waistcoat and blue striped breeches, 15cm, crossed swords mark, incised and impressed numerals
£200 - 300

195

A Meissen figure of a gardener, circa 1870

Modelled as a cherub digging with a spade, a rake and some pots at his side, on scroll moulded base, 12cm, underglaze blue crossed swords mark and incised C 100
£200 - 300

196

A Sèvres-style cabinet cup and saucer and a pair of outside decorated Sèvres plates, 19th century

The cabinet cup and saucer painted with classical subjects reserved on a bleu celeste ground heightened with enamels and 'jewels', saucer 14cm diameter, cup 7cm high, pseudo Sèvres marks, the plates with colourful flower sprays on a bleu celeste ground heightened with gilding, 24cm, interlaced LLs marks (4)
£350 - 500



191



196

197

A pair of Sèvres-style figures, 19th century

Modelled as seated cherubs, covered in a turquoise glaze with detail picked out in gold, 21cm (2)

£200 - 300

198

A French porcelain part service, 19th century

Painted in *famille verte* palette with geese and flowering plants, decorated as a replacement for an earlier Meissen service (54)

£300 - 500

Provenance:

The Busca Collection, Villa Serbelloni, Como.

199

A Sèvres-style jewelled chocolate cup, cover and stand, late 19th century

Decorated with bands of scrolling flowers picked out in bright enamels, between white enamel 'beaded' borders, all against a dark-blue ground, saucer 17.5cm, pseudo Sèvres mark in gold (3)

£400 - 600

200

A Sèvres-style gilt metal mounted bowl on stand

The circular bowl painted to the inside with three shell-panels of pairs of cupids, the outside with three panels of couples in pastoral landscapes, reserved on a *bleu celeste* ground, with gilt metal rim and tripod stand, 26.5cm diameter, 23cm high (2)

£600 - 800

201

A French Empire porcelain coffee pot and cover, early 19th century

Painted to both sides with Parisian views, titled 'Vue Perspective Du Jardin du Palais Royal' and 'Perspective de L'Arc de Triomphe au Tuilleries', within gilded borders, the handle with mask terminals, 29cm high (2)

£500 - 700

202

A pair of Sèvres coffee cups and saucers, mid 19th century

Decorated with gilt foliate sprays on a dark blue ground, the interior of the cups gilded, printed marks (4)

£200 - 300



199



200



201



203

203

A pair of ormolu mounted Sèvres-style vases, late 19th century

Of tapered cylindrical form with domed covers, painted with panels of figures reserved on a dark blue ground, 45cm high

£1,000 - 1,500

204

A pair of Sèvres bowls, dated 1846

In the manner of the Hunting Service of Louis Phillipe, with detailed borders of scrolling foliage and animals, 25cm diameter, printed marks (2)

£300 - 500

205

Six Italian porcelain dessert dishes, early 19th century

With gilded lattice borders and central crowned E possibly for Eliza Bonaparte, comprising two oval dishes, 29cm, and two pairs of circular dishes, star marks, one dish bearing handwritten label to reverse (6)

£300 - 500

206

A pair of Jacob Petit vases, 19th century

Encrusted with flowers on a green ground, on scroll moulded reticulated bases with detail picked out in gold, 21.5cm high, painted marks in blue (2)

£200 - 300

207

A Vienna-style plate, a pair of Dresden plates and a Sèvres-style plate, late 19th/early 20th century

The Vienna-style plate decorated with Ulysses and Dido, 24.5cm diameter, the pair of Dresden plates decorated with figures within dark blue and gilded borders, 25.5cm diameter, the Sèvres-style plate decorated with Watteauesque figures, three panels to the border reserved on a dark blue ground, 24cm diameter (4)

£500 - 700

208

A French faience model of a commode with four drawers, late 19th century

The top painted with a group of figures unloading items from a boat on the shores of a lake, with gilded decoration, 20.5cm wide, 15.5cm high

£300 - 400

209

A Dutch Delft large dish, 19th century

Painted in blue with a fence and stylised flowering foliage, 36.6cm diameter

£200 - 300



204



207

210

A Doccia group of Venus and Psyche, second half 19th century

Seated on an elaborate gilt-edged chair with blue upholstery on a bow-fronted marbled plinth on the grassy base, Venus clad in puce drapery, incised 'Amoré / e Siche' beneath the base, 29.5cm high
£500 - 700



210

211

Two framed Doccia plaques and a Doccia lobed tray, late 19th-20th century

The plaques each moulded in low relief with mythological scenes, depicting the Massacre of the Niobids, and a Bacchanale, respectively, in black ebonised frames, 12cm x 20.3cm and 12cm x 21.2cm (excluding frames) inscribed 'G180/oe' and 'G189/oe', respectively, the tray moulded with a scene depicting a Bacchanalian feast in the centre enclosed by swags held by putti, 38.5cm wide (3)
£500 - 800

The Massacre of the Niobids after a model by Antonio Selvi (1679-1753), in turn after the composition by Guglielmo della Porta (active 1534-1572)

212

A Berlin rectangular plaque by Franz Till, late 19th century

Painted with a young boy holding a rifle, signed Fr. Till Dresden, impressed sceptre mark and KPM, 15.5cm x 11.5cm
£500 - 700



212

213

A continental porcelain oval plaque, 19th century

Painted with a youth looking half right, with open neck shirt and coral necklace and pendant, 17 x 13cm
£400 - 600

214

A Dresden white rococo clock case, late 19th century

Modelled with four cherubs emblematic of the seasons, 49cm
£400 - 600

215

A Berlin (KPM) pitcher, 19th century

In the Renaissance style, decorated with a figure of a boy with two dogs at his feet, within scrolling foliate border reserved on an olive ground, with blue and brown detail to the neck and base, 52cm high, printed mark
£600 - 800



215

216

A Ginori maiolica pilgrim flask and stopper, circa 1870-80

Painted with mythical figures and beasts, with mask handles, 40cm high, painted blue mark (2)
£250 - 300



217



218



219



220

217

A pair of Dresden figural candelabra, 19th century
Modelled as a lady and gentleman standing in front of a flower encrusted triple scone, 72cm high
£400 - 600

218

A Limoges dessert service, early 20th century
Blush ivory with floral borders, each piece centred with a crest and motto, 'Loyalty N'a Honte', comprising, twenty one plates, two tureens and covers, two comports, four low comports and two other un-crested comports, script mark for Boyer, Limoges (33)
£600 - 800

The crest is probably that of the Dukes of Newcastle (Pelham-Clinton).
The motto translates as 'Loyalty has no shame'.

219

Five Royal Copenhagen figures, 20th century
Comprising 'Adam and Eve' modelled by Hans Hansen, 15cm, 'Leda and the Swan' modelled by Georg Thylstrup, 12cm, 'Opium Girl' modelled by Arno Malinowski, 'Girl from Fanø', 15cm and 'Girl from Sjælland', 12cm, printed marks (5)
£500 - 700

220*

A German porcelain snuff-box, second half 19th century
Decorated with moulded flowers and painted with figures in landscape vignettes, the inside of the cover with a scene of figures watching dancing monkeys dressed as people, 9.5cm wide
£600 - 800

221

A Sèvres-style dessert service, early 20th century
Decorated with circular portrait panels depicting French nobility, on a pink ground reserved with small panels of flowers, comprising a pair of tall comports, four low comports, a sauce tureen and fifteen plates, painted marks (22)
£600 - 800



221



222

222

A rare Nymphenburg ecuelle and cover, circa 1924

Raised on three gilt paw feet, finely decorated by Rudolf Dieuwok with chinoiserie vignettes in tooled gilding on a black ground, the rims reserved with gilt borders of linked circles, *14cm high; 15.8cm diam.*, 'Nymphenburg' and crowned Bavarian shield stencilled in green, gilt circle mark for Rudolf Dieuwok, impressed 721 (2)
£500 - 700

Rudolf Dieuwok (1890-1940) was active as a painter at the Nymphenburg manufactory from 1912 until his death. Another covered ecuelle is published in A. Ziffer, *Nymphenburger Moderne, Die Porzellan-Manufaktur im 20. Jahrhundert* (1997), cat.no. 423, where the author notes that a similar box was included in an exhibition in Den Haag in 1931.

223

A pair of Royal Bonn vases, circa 1900

Of slender ovoid form, painted with figures of young female water carriers in classical dress, reserved on a dark green ground, signed A Wirkner, with gilded detail, *48.5cm high*, printed marks, painted and incised numerals (2)
£800 - 1,200



223



224



224

A Berlin portrait cabinet cup and saucer, circa 1900

The cup with a biscuit profile bust of Emperor Wilhelm II to dexter against a gold-ground medallion, flanked by gold shields with the German Imperial eagle against a crimson ground with gilt foliage, green-ground borders with gilt *Art nouveau* foliage and scrollwork, the saucer with the crowned monogram of Wilhelm II and leafy branches in gilding on a trefoil reserve against the coloured and gilt grounds, gilt-edged scroll handle and paw feet, *the saucer: 18cm diameter, the cup: 14cm high*, sceptre marks in underglaze-blue, orb and KPM stencilled in iron-red, impressed 1P and date code (2)
£600 - 800

225

A German porcelain needle case, circa 1870

Of cylindrical form, painted with groups of classical figures seated amidst clouds, on a gold ground, with a white metal mount, *13.5cm*
£500 - 700



225



230



231

226

A pair of Vienna-style vases and covers, circa 1900

Of twin-handled urn form on socle stands, decorated with a frieze of classical figures reserved on a gilded ground, within dark blue and gold borders, 40cm (4)

£500 - 700

227

A Nymphenburg figure of a lady and another of a putto, early 20th century

Both white glazed, the lady standing with her right arm raised, a dish in her other hand, on a shaped base, 16.5cm, printed mark, the putto kneeling on a large ball and holding a swirling cloth, 11cm, impressed mark (2)

£300 - 500

228

A pair of continental porcelain military equestrian figures, 20th century

One figure wearing red jacket and bearskin hat, on a grey horse, 35cm, the other wearing blue jacket and plumed helmet, on a black horse, 37cm (2)

£400 - 600

229

A Dresden yellow ground tea service, 20th century

Decorated in the Helena Wolfsohn style with panels of figures and flowers on a yellow ground, comprising a teapot and cover, milk jug, slop bowl, sucrier and cover, twelve cups, twelve saucers, eleven plates and a cake plate (42)

£400 - 600

Asian Works of Art and Textiles

230 Y

A Chinese pierced ivory perfume bottle or incense holder and a small wood carving

The ivory in the form of a waisted pear with pierced detail and foliate sprays to the sides, the front and back sections bound with cloth tassels, 7.5cm, the small wood oval carving with flowers, 3.5cm (2)

£1,500 - 2,000

231 Y

Three Japanese ivory okimonos, and an Indian ivory and horn figure group

The okimonos modelled as a standing man holding a long knarled branch, a cockerel perched on his shoulder, 16cm, red tablet to base, another of a standing geisha, 19cm, leaf mark to base, with hardwood stand, another of a figure group carrying large panniers, 6.5cm high, the Indian carving modelled as a barber and his customer, 9cm high (4)

£300 - 400

232 Y

A group of Japanese ivory pieces, Meiji period

Including a shibayama tusk section vase inlaid with insects and foliage, 11.5cm high, on a hardwood stand with four bun feet, an okimono of a seated man, 11cm, with a hardwood stand, an okimono of two figures, 7cm, a model of an elephant, 9cm high, a small circular box and cover, 4cm diameter, and a small handle, carved with animals, 16cm (8)

£300 - 400

233 Y

A Japanese ivory figure group, Meiji period

Modelled as two men and two boys harvesting fruit and vegetables, on a wooden base, 27cm wide x 21cm high

£300 - 500

234 Y

A Japanese carved ivory netsuke, Meiji period

Depicting two seated figures, one holding a fan, his left arm around the other figure, 4cm high, signature to a red tablet

£150 - 200



235

235 Y

A Chinese tortoiseshell brisé fan, 19th century

Featuring a central shield-shaped cartouche around an 'L.A.' monogram, flanked by two oval cartouches, below a swagged garland and surrounded by pagodas and trees, 22.5cm long

£2,000 - 3,000

236 Y

A Chinese ivory brisé fan, 19th century

Featuring a central oval cartouche, flanked by two circular cartouches, surrounded by foliage, 16.5cm long

£800 - 1,200

237 Y

A Chinese fan with a painted leaf on ivory sticks, 19th century

The leaf and sticks featuring scenes of Chinese life, the figures on the leaf depicted in applied silk and ivory, 28cm long, within a gilt decorated lacquer box (2)

£300 - 500

238 Y

A Cantonese ivory brisé fan and card case, 19th century

The double-sided fan carved with scenes of Chinese life, 19cm long, the card case also carved with scenes of Chinese life, 9.5 x 5.5cm (2)

£800 - 1,200

239

A Chinese export carved sandalwood fan

Painted with an extensive interior scene, in lacquered box

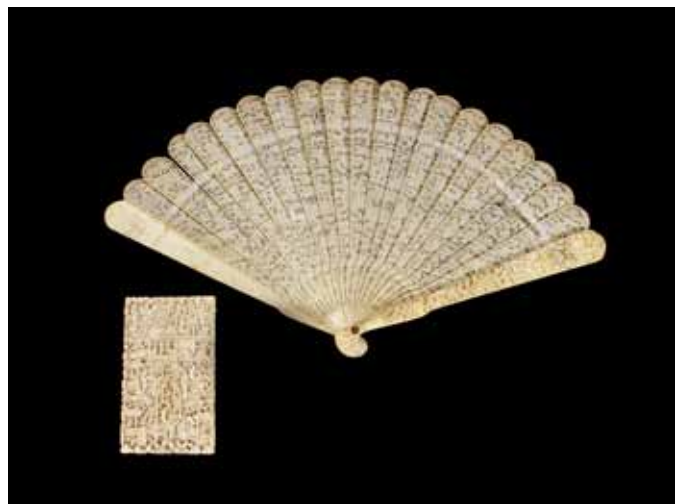
£300 - 400



236



237



238



240

240

A Chinese embroidered fur-lined dragon robe

Of blue silk, embroidered with eight four-clawed dragons in couched gilt thread, surrounded by clouds and auspicious symbols, above a hem of crashing waves and mountains, with horseshoe cuffs and fur lined with a fur collar, *103 x 142cm*

£600 - 1,000



241

241

A Chinese red silk embroidered robe, 19th century

Featuring eight roundels depicting a central crane surrounded by butterflies and chrysanthemums, above crashing waves and mountains and a deep lishui hem, edged with embroidered black silk bands and wide horseshoe cuffs, lightly quilted with yellow silk lining, *129 x 129cm*

£1,500 - 2,000

242

A large Chinese embroidered bedspread, late 19th century

Of cream silk satin embroidered with a large scene featuring cranes amongst bamboo and other foliage, edged with knotted silk fringes, *240 x 222cm*

£600 - 1,000

243

A Chinese golden yellow embroidered silk satin robe, 19th century

Featuring a design of scattered butterflies, edged with embroidered navy bands and yellow sleevebands embroidered with fish, *135 x 133cm*

£300 - 500

244

A group of Chinese embroidered textiles

Including a pair of kesi-weave bird rank badges; a pair of sleevebands featuring Chinese scenes in silk and couched golden thread; a shaped collar, featuring Chinese scenes, edged with woven braid and deep silk fringes decorated with metal discs; an embroidered cream silk mat; an embroidered red satin apron; a petit point fan holder featuring water lillies and prunus blossom and another embroidered fan holder and other items (14)

£350 - 450

245

A Chinese embroidered silk panel

Worked in gold and other coloured threads with five clawed dragons, flaming pearls and two phoenix on a pale green ground, within a stylised flowerhead border,

64 x 95cm

£200 - 300

246

A Chinese embroidered robe, early-mid 20th century

Of dark navy silk satin, embroidered with figures beside a bridge, amongst scrolling foliage in peking knots, edged with embroidered cream bands and pale blue silk sleevebands, embroidered with scenes of Chinese life, *106 x 143cm*

£200 - 300



242

247

Two Chinese embroidered bedspreads, 19th century

One featuring a large exotic bird, surrounded by smaller birds and flowers, embroidered on cream silk satin, with deep knotted silk fringes, 236 x 195cm; and another also featuring an exotic bird, surrounded by flowers and wading water birds, embroidered on cream silk crepe, with knotted silk fringes, 207 x 200cm (2)

£500 - 700

248

A Chinese embroidered silk ceremonial armour covering, 19th century

Of golden silk satin, in shaped panels with scalloped edges, embroidered with raised dragons and floral designs, with applied mirror discs; together with three associated panels (4)

£800 - 1,200

249

A jade carving of a ram

A smaller model at its side, on a hardwood stand, 7.5cm wide (2)

£300 - 500

250

A jade model of a walking figure, Qing dynasty

Holding the 'World Peace' coin, 6cm high

£500 - 800

251

A Japanese gold lacquer box and a group of approximately fifty-five Chinese mother of pearl gaming counters

The cover of the square box applied with an ivory and mother of pearl half figure, with nashiji interior, 9.5cm wide, the counters of rectangular form, 2.6cm x 7cm

£300 - 500

252

A Jade archers ring

Of plain form, 3.8cm diameter

£400 - 600

253

A green stone or quartz pendant hung on a beaded necklace

The pendant carved as a stylised fruit, 6cm

254

A pair of Indo-Chinese carved and lacquered wood temple models of deer

Each standing with large vase of foliage on their backs, 44cm high (2)

£500 - 700



249



250



251



254



255

255

A group of five snuff bottles

Comprising a malachite bottle and stopper, carved in high relief with phoenix and peonies, *8cm high*, a glass bottle and stopper of flattened rectangular form, internally painted with the seven immortals of the bamboo grove, signed and dated Yeh Chung San, 1924, *7.5cm*, a Japanese ivory and lacquer rectangular bottle and stopper, decorated with immortals in landscapes with borders of flowers and butterflies, with detail in red, green and black lacquer, *8cm high*, painted mark, a porcelain flattened oviform bottle, moulded in high relief with 'antiques' and overglazed with coloured enamels on a white ground, malachite stopper, *7.5cm*, and a cameo glass bottle with a hardstone stopper, carved with a stylised vine in red on a white ground, *6.5cm* (5)
£800 - 1,200

256

A carved smoky quartz figure group

On a carved base, *24cm high*
£500 - 700

257

A carved carnelian figure group and a carved green quartz figure group

On carved bases, *20cm high* (2)
£500 - 700

258

A 'menagerie' of nine small, stone, quartz or other animals

Comprising an egg with wood stand, a dragon, a horse, an armadillo, a rabbit, two ducks, an elephant with wood stand and two conjoined felines

259

Five hardstone carvings

Comprising a censer and cover, *19cm*, a pair of lions, *6.5cm*, a deity on a wood base, *28cm*, and a seated boy, *9.5cm* (6)
£300 - 400



260

260

A pair of Chinese cloisonné boxes and covers modelled as ducks
 With brightly coloured plumage, the covers modelled as a flower and leaf, *11cm long* (4)

£400 - 600

261

A carved smoky quartz figure group

On a carved base, *30cm high*
£500 - 700

262

Two Chinese carved hardwood jardiniere stands

Of barrel form, with rouge marble inset tops, one circular, one octagonal, on four swept legs united by a cross stretcher, *92cm and 90cm high* (2)
£400 - 600

263

A pair of Japanese cloisonné vases

Of tapered ovoid form, decorated with stylised chrysanthemum sprays on a dark blue ground, *24cm high* (2)
£300 - 500

264

A Japanese bronze figure of a lady

The standing figure pouring grain from a basket into a sack, *32cm high*, impressed mark
£400 - 600

265 Y

A Japanese wall plaque, Meiji period

Applied in relief in ivory with a seated monkey wearing glasses and a jacket, holding an inro and netsuke, with another at its feet, and signature tablet, on a blue lacquered ground, *32cm x 56cm*
£200 - 300



266 (part)



271 (part)

266

Eleven Chinese pith or rice paper paintings

Depicting groups of figures in gardens and interiors, *three 17.5cm x 29cm and nine 31cm x 19cm*, all framed (11)

£800 - 1,200

267

A collection of thirteen Japanese woodblock prints, various artists and subjects including:

Toyokuni I, two actors *36 x 25cm*; Toyokuni II, two actors *37 x 25.5cm*; Kuniyoshi, one of a lady and one of a warrior *25 x 18cm*; and others by Hiroshige, Shunsho etc. (13).

£500 - 700

268

Ota Masamitsu (Japanese, 1892-1975) Figures from the Stage in Shōwa

A group of three colour woodblock prints, *38cm x 26cm*

£600 - 800

269

A set of four Chinese watercolour drawings on pith or rice paper

Depicting nobility and servants in interior scenes, *27cm x 19cm*

£200 - 300

270

Kunisada II (Utagawa Munehisu) (Japanese, 1823-1880)

Two scenes from the Tale of Genji, two scenes framed as one, signed as Toyokuni, colour woodblock prints, *35.5 x 24.5cm (14 x 9 1/2in)* each.

£400 - 600

271

Ten Japanese watercolours

Painted with groups of figures in gardens and courtyards, *nine 32cm x 49cm and one 23cm x 33cm* (10)

£500 - 600

272

Ten Japanese watercolours

Depicting groups of figures in small shaped panels, unframed (10)

£200 - 300

273

20th Century Chinese school After Yun Shouping (1635-1690)

A near pair of silk hanging scrolls, each painted with peonies and blossom, on a gold ground, minor variations, framed, *156 x 68.5cm and 163 x 69cm* (2)

£500 - 800

274

Two oban yoko-e

Comprising Mishima, asagiri and Hara, asa no Fuji, both unframed (2)

275

A Japanese cloisonné vase

Of tapered ovoid form, decorated with birds amidst flowering branches, on a dark green ground, *30.5cm high*

£150 - 200

276

A pair of Chinese bronze buddhistic lions

Seated on rectangular plinth bases, *18cm high* (2)

£200 - 300



282



279

277 W

A large iron figure of Buddha

Cast Yongle six-character mark

Seated cross-legged atop a lotus throne, the left hand in the lap in dhyana mudra and the right touching the ground in bhūmiśpārśa mudra, wearing long flowing robes revealing the bare chest and folded over the shoulders and left arm, the head with tight snailshell curls flanked by the pendulous earlobes, the eyes cast serenely downwards, the six-character Yongle mark cast on top of the front of the single-lotus pedestal, 77cm high

£4,000 - 6,000

Asian Ceramics

278

Two Japanese Kakiemon dishes, 18th century

Painted with scattered foliate sprays within underglaze blue line borders and lobed rims, with underglaze blue foliate garlands to the underside, 14cm diameter (2)

£200 - 300

279

A Japanese Imari baluster jar

Edo period

of shouldered oviform, painted with pavilions amidst flowering plants and Ho-Ho birds, between lappet panelled collars to the shoulder and foot incorporating sparrows and quail,

62cm high

£500 - 700

280

A Japanese Satsuma miniature teapot and cover

of compressed form, painted with panels of foliate sprays reserved on a dark blue ground with gilded detail, with wickerwork handle, signed (2)

£600 - 1,000

281

A group of Chinese provincial pottery

Including a celadon glazed bowl, 18cm diameter, four blue and white dishes, two jars and covers and sundry pieces

£250 - 350

282

Two Japanese Kutani vases and covers, circa 1900

One of bulbous form on a waisted stem, the domed cover with interlocked rings finial, painted with mythical figures, 43cm high, painted mark to base, the other of baluster form, the cover with a dragon finial, painted with a figure to one side and a landscape to the other, signed, 52cm high, painted mark to base (4)

£500 - 700



283

283

A Chinese export oval meat platter, late 18th century

The centre enamelled with a crest and monogram, the rim with panels of figures, animals, butterflies and fish, *47.5cm wide*

£500 - 600



284

284

A Chizhou ovoid vase, Ming Dynasty

Decorated with brown scattered brushstrokes on an ivory ground, *70cm*

£1,000 - 1,200



286

285

A Yue glazed bowl, 11th/12th century

Decorated with stylised foliate sprays, *20cm diameter*

£800 - 1,200



285

286

A Seljuk monochrome sgraffito pottery bowl, Persia, 12th century

Of conical form, decorated to the interior with flower head to the central well with surrounding black dots, a band of pseudo inscription to interior walls and band of black dots to the rim, *18.2cm diameter*

£500 - 700

287

A Qingbai bowl, 13th century

The interior with incised wave decoration, *19.5cm diameter*

£800 - 1,200



287



288



288

A pair of Chinese famille verte vases and covers

Of baluster form, decorated with narrative scenes of figures in landscape settings, 41cm high (4)

£750 - 800

289

A Chinese rouleau vase

Covered in a dark brown/red glaze, six character mark in underglaze blue, 44.5cm high

£400 - 500

290

A Canton export famille rose oviform vase and cover, circa 1900

Painted with figures at a festival, 34cm high (2)

£250 - 350

291

An underglaze blue and polychrome enamel bowl, and a small blue and white vase, latter with six-character Kangxi mark

The bowl decorated with a long-tailed bird, 18cm diameter, the small vase painted with figures, 7cm, both with a wood stand and a fitted box (6)

292

A pair of Chinese sang de boeuf vases

Of hexagonal panelled baluster form with kylin mask ring handles, 19cm high (2)

£250 - 300



293

293

A pair of porcelain brushpots, Tongzhi four character marks and of the period

Modelled in relief with fish, bats, and peach sprays amidst stylised waves, 13cm high (2)

£800 - 1,200

294

A pair of Chinese famille rose vases

Decorated with panels of flowers on a patterned ground, 29.5cm high (2)

£200 - 300



295

295

A Chinese famille verte rouleau vase, 19th century

Painted with two large panels of figures and small shaped panels of foliage, landscapes and fish, reserved on a powder blue ground, 62cm high

£600 - 800

296

A group of Chinese porcelain

Including a bowl painted with panels of deer, 14.5cm diameter, a jar and cover painted with foliate sprays, 20cm high, a lilac powder glazed bowl, 15cm diameter, a small blue and white bowl, painted with a landscape, 10cm diameter, six character mark, two white-glazed bowls, a small globular vase, 8cm, two small teabowls, three octagonal blue and white dishes, five other dishes and seven wood stands (25)

£250 - 350



298



297

297

Three various bowls

Comprising a famille rose bowl, Hongxian four-character mark; a blue ground bowl, Tongzhi six-character mark; and a famille rose bowl decorated with a crane and stag, four-character mark

The largest 15cm (6in) (3).

298

A Chinese famille verte dish, Kangxi

Painted with a phoenix and a pavilion within panelled foliate border, 35.5cm diameter, painted mark

£600 - 1,000

299

A polychrome enamel vase and cover, Chenghua six-character mark

Decorated with cranes and other birds amongst scattered clouds, 21cm (2)

300

A doucai cup, Yongzheng six-character mark

Decorated with a scholar seated on a bench a boy standing alongside beside a fence



299



300



301

301

A documentary famille rose flower-shaped pouring vessel

Guangxu, dated by inscription to AD1908 and of the period
The body formed as an opening lotus blossom with overlapping incised petals enamelled in pink ending with a square spout, the underside with an applied lime-green stem stippled and inscribed in black Daqing Guangxu sanshisinian Jiaotaihu fujin qiucuo jinian bei.

20cm (8in) long

£3,000 - 5,000

The inscription may be translated: Cup commemorating the autumn military exercises held near Lake Taiming in Anhui during the 34th year of the Guangxu reign of the Great Qing Dynasty. A similar cup dated to 1907 was included in the Min Chiu Society Exhibition, Hong Kong, and is illustrated by L.A.Cort and J.Stuart, *Joined Colors: Decoration and Meaning in Chinese Porcelain*, Washington D.C., 1993, no.67.

302

A Chinese famille verte baluster vase, 19th century

Painted with panels of figures and landscapes on a speckled grey ground with scattered stylised flowerheads, 42cm high

£200 - 300

303

A famille rose Becharong bowl, 19th century

The exterior painted with flowers on an orange ground within green ground borders, 27.5cm diameter

£800 - 1,200

304

An Annamese blue and white dish

Of shallow circular form, painted with foliate sprays within a scrolling border, 36cm diameter

£400 - 600



302



303



304



305

305

A Chinese blue and white vase and cover, 19th century

Baluster and with a domed cover with Dog of Fo finial, painted with scrolling foliate sprays below four applied dog masks, within panelled borders, 48cm high (2)

£1,000 - 1,500



306

306

A Chinese blue and white jug and cover, 18th century

Painted with pavilions in a river landscape, below a cell pattern border to the rim, the cover with a mythical beast finial, 29cm high (2)

£600 - 800

307

A Chinese large blue and white fishbowl,

the body decorated with a continuous line of prunus flower heads and foliage between bands,

50cm diameter

£500 - 800

308

A pair of Chinese blue and white vase and covers, Kangxi marks

Painted with panels of figures and foliage on a powder blue ground, 28cm high, both with drilled holes for lamps (2)

£300 - 500

309

A large blue and white dish, circa 1500

Of shallow circular form, painted with large flowerheads and leaves, 50cm diameter

£2,000 - 3,000

310

A small blue and white dragon dish

16cm diameter



309



Aynsome, Cartmel, Lancashire



Frank Newstead

The following seven lots the property of a lady. The present vendor's grandfather, Mr Frank Newstead (1855-1939) purchased the pieces circa 1900 from leading Chinese porcelain dealers in Liverpool. Mr Newstead was the co-owner of the Birkenhead Brewery and resided at the family home (illustrated above) Aynsome, Cartmel, Lancashire where the porcelain was displayed.

311

A Chinese blue and white globular vase

Decorated with a four-claw dragon amidst clouds, 35cm high

£500 - 600



311

312

A Chinese blue and white jar and cover, 18th-19th century

Cylindrical with a flattened cover, painted with panels of precious objects and Buddhist symbols on a prunus blossom and cracked ice ground,

20cm high

£500 - 600



312



314



313

313

A pair of Chinese blue and white baluster vases

Painted with precious objects, 41.5cm high, six character Ming marks (2)
£800 - 1,200

314

Two Chinese blue and white jars, 18th century

The ovoid bodies reserved with panels painted with Buddhistic emblems on a prunus blossom and cracked ice ground, 22cm and 21cm, with hardwood covers (4)
£800 - 1,200

315

A Chinese blue and white bowl and a vase, Kangxi period

The bowl painted with circular panels of birds interspersed with scrolling lotus, the interior with a panel of lotus flowers, 21cm, bearing six character Chenghua mark, the vase ovoid and decorated with scrolling flowers below a lappet band, 24cm (2)
£500 - 600



315



316

316

A Chinese blue and white jar, Kangxi period

Ovoid with a wide fluted band painted with two circular panels enclosing Buddhist emblems and precious objects, between bands of prunus blossom, 22cm

£800 - 1,000



317

317

A Chinese blue and white jar, Kangxi period

Ovoid and painted with a mountainous river landscape, two figures to the foreground, 24cm

£1,000 - 1,500

End of sale

NOTICE TO BIDDERS

This notice is addressed by *Bonhams* to any person who may be interested in a *Lot*, including *Bidders* and potential *Bidders* (including any eventual *Buyer* of the *Lot*). For ease of reference we refer to such persons as “*Bidders*” or “you”. Our List of Definitions and Glossary is incorporated into this *Notice to Bidders*. It is at Appendix 3 at the back of the *Catalogue*. Where words and phrases are used in this notice which are in the List of Definitions, they are printed in italics.

IMPORTANT: Additional information applicable to the *Sale* may be set out in the *Catalogue* for the *Sale*, in an insert in the *Catalogue* and/or in a notice displayed at the *Sale* venue and you should read them as well. Announcements affecting the *Sale* may also be given out orally before and during the *Sale* without prior written notice. You should be alert to the possibility of changes and ask in advance of bidding if there have been any.

1. OUR ROLE

In its role as *Auctioneer* of *Lots*, *Bonhams* acts solely for and in the interests of the *Seller*. *Bonhams’* job is to sell the *Lot* at the highest price obtainable at the *Sale* to a *Bidder*. *Bonhams* does not act for *Buyers* or *Bidders* in this role and does not give advice to *Buyers* or *Bidders*. When it or its staff make statements about a *Lot* or, if *Bonhams* provides a *Condition Report* on a *Lot* it is doing that on behalf of the *Seller* of the *Lot*. *Bidders* and *Buyers* who are themselves not expert in the *Lots* are strongly advised to seek and obtain independent advice on the *Lots* and their value before bidding for them. The *Seller* has authorised *Bonhams* to sell the *Lot* as its agent on its behalf and, save where we expressly make it clear to the contrary, *Bonhams* acts only as agent for the *Seller*. Any statement or representation we make in respect of a *Lot* is made on the *Seller’s* behalf and, unless *Bonhams* sells a *Lot* as principal, not on our behalf and any *Contract for Sale* is between the *Buyer* and the *Seller* and not with us. If *Bonhams* sells a *Lot* as principal this will either be stated in the *Catalogue* or an announcement to that effect will be made by the *Auctioneer*, or it will be stated in a notice at the *Sale* or an insert in the *Catalogue*.

Bonhams does not owe or undertake or agree to any duty or responsibility to you in contract or tort (whether direct, collateral, express, implied or otherwise). If you successfully bid for a *Lot* and buy it, at that stage *Bonhams* does enter into an agreement with the *Buyer*. The terms of that contract are set out in our *Buyer’s Agreement*, which you will find at Appendix 2 at the back of the *Catalogue*. This will govern *Bonhams’* relationship with the *Buyer*.

2. LOTS

Subject to the *Contractual Description* printed in bold letters in the *Entry* about the *Lot* in the *Catalogue* (see paragraph 3 below), *Lots* are sold to the *Buyer* on an “as is” basis, with all faults and imperfections. Illustrations and photographs contained in the *Catalogue* (other than photographs forming part of the *Contractual Description*) or elsewhere of any *Lots* are for identification purposes only. They may not reveal the true condition of the *Lot*. A photograph or illustration may not reflect an accurate reproduction of the colour(s) of the *Lot*. *Lots* are available for inspection prior to the *Sale* and it is for you to satisfy yourself as to each and every aspect of a *Lot*, including its authorship, attribution, condition, provenance, history, background, authenticity, style, period, age, suitability, quality, roadworthiness (if relevant), origin, value and estimated selling price (including the *Hammer Price*). It is your responsibility to examine any *Lot* in which you are interested. It should be remembered that the actual condition of a *Lot* may not be as good as that indicated by its outward appearance. In particular, parts may have been replaced or renewed and *Lots* may not be authentic or of satisfactory quality; the inside of a *Lot* may not be visible and may not be original or may be damaged, as for example where it is covered by upholstery or material. Given the age of many *Lots* they may have been damaged and/or repaired and you should not assume that a *Lot* is in good condition. Electronic or mechanical parts may not operate or may not comply with current statutory requirements. You should not assume that electrical items designed to operate on mains electricity will be suitable for connection to the mains electricity supply and you should obtain a report from

a qualified electrician on their status before doing so. Such items which are unsuitable for connection are sold as items of interest for display purposes only. If you yourself do not have expertise regarding a *Lot*, you should consult someone who does to advise you. We can assist in arranging facilities for you to carry out or have carried out more detailed inspections and tests. Please ask our staff for details.

Any person who damages a *Lot* will be held liable for the loss caused.

3. DESCRIPTIONS OF LOTS AND ESTIMATES

Contractual Description of a *Lot*

The *Catalogue* contains an *Entry* about each *Lot*. Each *Lot* is sold by its respective *Seller* to the *Buyer* of the *Lot* as corresponding only with that part of the *Entry* which is printed in bold letters and (except for the colour, which may be inaccurately reproduced) with any photograph of the *Lot* in the *Catalogue*. The remainder of the *Entry*, which is not printed in bold letters, represents *Bonhams’* opinion (given on behalf of the *Seller*) about the *Lot* only and is not part of the *Contractual Description* in accordance with which the *Lot* is sold by the *Seller*.

Estimates

In most cases, an *Estimate* is printed beside the *Entry*. *Estimates* are only an expression of *Bonhams’* opinion made on behalf of the *Seller* of the range where *Bonhams* thinks the *Hammer Price* for the *Lot* is likely to fall; it is not an *Estimate* of value. It does not take into account any VAT or *Buyer’s Premium* payable. *Lots* can in fact sell for *Hammer Prices* below and above the *Estimate*. Any *Estimate* should not be relied on as an indication of the actual selling price or value of a *Lot*. *Estimates* are in the currency of the *Sale*.

Condition Reports

In respect of most *Lots*, you may ask for a *Condition Report* on its physical condition from *Bonhams*. If you do so, this will be provided by *Bonhams* on behalf of the *Seller* free of charge. *Bonhams* is not entering into a contract with you in respect of the *Condition Report* and accordingly does not assume responsibility to you in respect of it. Nor does the *Seller* owe or agree to owe you as a *Bidder* any obligation or duty in respect of this free report about a *Lot*, which is available for your own inspection or for inspection by an expert instructed by you. However, any written *Description* of the physical condition of the *Lot* contained in a *Condition Report* will form part of the *Contractual Description* of the *Lot* under which it is sold to any *Buyer*.

The Seller’s responsibility to you

The *Seller* does not make or agree to make any representation of fact or contractual promise, *Guarantee* or warranty and undertakes no obligation or duty, whether in contract or in tort (other than to the eventual *Buyer* as set out above), in respect of the accuracy or completeness of any statement or representation made by him or on his behalf, which is in any way descriptive of any *Lot* or as to the anticipated or likely selling price of any *Lot*. Other than as set out above, no statement or representation in any way descriptive of a *Lot* or any *Estimate* is incorporated into any *Contract for Sale* between a *Seller* and a *Buyer*.

Bonhams’ responsibility to you

You have the opportunity of examining the *Lot* if you want to and the *Contract for Sale* for a *Lot* is with the *Seller* and not with *Bonhams*; *Bonhams* acts as the *Seller’s* agent only (unless *Bonhams* sells the *Lot* as principal).

Bonhams undertakes no obligation to you to examine, investigate or carry out any tests, either in sufficient depth or at all, on each *Lot* to establish the accuracy or otherwise of any *Descriptions* or opinions given by *Bonhams*, or by any person on *Bonhams’* behalf, whether in the *Catalogue* or elsewhere.

You should not suppose that such examinations, investigations or tests have occurred.

Bonhams does not make or agree to make any representation of fact, and undertakes no obligation or duty (whether in contract or tort) in respect of the accuracy or completeness of any statement or representation made by *Bonhams* or on

Bonhams’ behalf which is in any way descriptive of any *Lot* or as to the anticipated or likely selling price of any *Lot*. No statement or representation by *Bonhams* or on its behalf in any way descriptive of any *Lot* or any *Estimate* is incorporated into our *Buyer’s Agreement*.

Alterations

Descriptions and *Estimates* may be amended at *Bonhams’* discretion from time to time by notice given orally or in writing before or during a *Sale*.

THE *LOT* IS AVAILABLE FOR INSPECTION AND YOU MUST FORM YOUR OWN OPINION IN RELATION TO IT. YOU ARE STRONGLY ADVISED TO EXAMINE ANY *LOT* OR HAVE IT EXAMINED ON YOUR BEHALF BEFORE THE *SALE*.

4. CONDUCT OF THE SALE

Our *Sales* are public auctions which persons may attend and you should take the opportunity to do so. We do reserve the right at our sole discretion to refuse admission to our premises or to any *Sale* without stating a reason. We have complete discretion as to whether the *Sale* proceeds, whether any *Lot* is included in the *Sale*, the manner in which the *Sale* is conducted and we may offer *Lots* for *Sale* in any order we choose notwithstanding the numbers given to *Lots* in the *Catalogue*. You should therefore check the date and starting time of the *Sale*, whether there have been any withdrawals or late entries. Remember that withdrawals and late entries may affect the time at which a *Lot* you are interested in is put up for *Sale*. We have complete discretion to refuse any bid, to nominate any bidding increment we consider appropriate, to divide any *Lot*, to combine two or more *Lots*, to withdraw any *Lot* from a *Sale* and, before the *Sale* has been closed, to put up any *Lot* for auction again. Auction speeds can exceed 100 *Lots* to the hour and bidding increments are generally about 10%. However these do vary from *Sale* to *Sale* and from *Auctioneer* to *Auctioneer*. Please check with the department organising the *Sale* for advice on this. Where a *Reserve* has been applied to a *Lot*, the *Auctioneer* may, in his absolute discretion, place bids (up to an amount not equalling or exceeding such *Reserve*) on behalf of the *Seller*. We are not responsible to you in respect of the presence or absence of any *Reserve* in respect of any *Lot*. If there is a *Reserve* it will normally be no higher than the lower figure for any *Estimate* in the *Catalogue*, assuming that the currency of the *Reserve* has not fluctuated adversely against the currency of the *Estimate*. The *Buyer* will be the *Bidder* who makes the highest bid acceptable to the *Auctioneer* for any *Lot* (subject to any applicable *Reserve*) to whom the *Lot* is knocked down by the *Auctioneer* at the fall of the *Auctioneer’s* hammer. Any dispute as to the highest acceptable bid will be settled by the *Auctioneer* in his absolute discretion. All bids tendered will relate to the actual *Lot* number announced by the *Auctioneer*. An electronic currency converter may be used at the *Sale*. This equipment is provided as a general guide as to the equivalent amount in certain currencies of a given bid. We do not accept any responsibility for any errors which may occur in the use of the currency converter. We may use video cameras to record the *Sale* and may record telephone calls for reasons of security and to assist in solving any disputes which may arise in relation to bids made at the *Sale*. At some *Sales*, for example, jewellery *Sales*, we may use screens on which images of the *Lots* will be projected. This service is provided to assist viewing at the *Sale*. The image on the screen should be treated as an indication only of the current *Lot*. It should be noted that all bids tendered will relate to the actual *Lot* number announced by the *Auctioneer*. We do not accept any responsibility for any errors which may occur in the use of the screen.

5. BIDDING

We do not accept bids from any person who has not completed and delivered to us one of our *Bidding Forms*, either our *Bidder Registration Form*, *Absentee Bidding Form* or *Telephone Bidding Form*. You will be asked for proof of identity, residence and references, which, when asked for, you must supply if your bids are to be accepted by us. Please bring your passport, driving licence (or similar photographic proof of identity) and proof of address. We may request a deposit from you before allowing you to bid. We may refuse entry to a *Sale* to any person even if that person has completed a *Bidding Form*.

Bidding in person

You should come to our *Bidder* registration desk at the *Sale* venue and fill out a *Bidder* Registration Form on (or, if possible, before) the day of the *Sale*. The bidding number system is sometimes referred to as “paddle bidding”. You will be issued with a large card (a “paddle”) with a printed number on it. This will be attributed to you for the purposes of the *Sale*. Should you be a successful *Bidder* you will need to ensure that your number can be clearly seen by the *Auctioneer* and that it is your number which is identified as the *Buyer's*. You should not let anyone else use your paddle as all *Lots* will be invoiced to the name and address given on your *Bidder* Registration Form. Once an invoice is issued it will not be changed. If there is any doubt as to the *Hammer Price* of, or whether you are the successful *Bidder* of, a particular *Lot*, you must draw this to the attention of the *Auctioneer* before the next *Lot* is offered for *Sale*. At the end of the *Sale*, or when you have finished bidding please return your paddle to the *Bidder* registration desk.

Bidding by telephone (only available on lots with a low estimate greater than £400)

If you wish to bid at the *Sale* by telephone, please complete a *Telephone Bidding Form*, which is available from our offices or in the *Catalogue*. Please then return it to the office responsible for the *Sale* at least 24 hours in advance of the *Sale*. It is your responsibility to check with our Bids Office that your bid has been received. Telephone calls will be recorded. The telephone bidding facility is a discretionary service and may not be available in relation to all *Lots*. We will not be responsible for bidding on your behalf if you are unavailable at the time of the *Sale* or if the telephone connection is interrupted during bidding. Please contact us for further details.

Bidding by post or fax

Absentee *Bidding Forms* can be found in the back of this *Catalogue* and should be completed and sent to the office responsible for the *Sale*. It is in your interests to return your form as soon as possible, as if two or more *Bidders* submit identical bids for a *Lot*, the first bid received takes preference. In any event, all bids should be received at least 24 hours before the start of the *Sale*. Please check your Absentee *Bidding Form* carefully before returning it to us, fully completed and signed by you. It is your responsibility to check with our Bids Office that your bid has been received. This additional service is complimentary and is confidential. Such bids are made at your own risk and we cannot accept liability for our failure to receive and/or place any such bids. All bids made on your behalf will be made at the lowest level possible subject to *Reserves* and other bids made for the *Lot*. Where appropriate your bids will be rounded down to the nearest amount consistent with the *Auctioneer's* bidding increments. New *Bidders* must also provide proof of identity and address when submitting bids. Failure to do this will result in your bid not being placed.

Bidding via the internet

Please visit our *Website* at <http://www.bonhams.com> for details of how to bid via the internet.

Bidding through an agent

Bids will be accepted as placed on behalf of the person named as the principal on the *Bidding Form* although we may refuse to accept bids from an agent on behalf of a principal and will require written confirmation from the principal confirming the agent's authority to bid. Nevertheless, as the *Bidding Form* explains, any person placing a bid as agent on behalf of another (whether or not he has disclosed that fact or the identity of his principal) will be jointly and severally liable with the principal to the *Seller* and to *Bonhams* under any contract resulting from the acceptance of a bid. Subject to the above, please let us know if you are acting on behalf of another person when bidding for *Lots* at the *Sale*.

Equally, please let us know if you intend to nominate another person to bid on your behalf at the *Sale* unless this is to be carried out by us pursuant to a Telephone or Absentee *Bidding Form* that you have completed. If we do not approve the agency arrangements in writing before the *Sale*, we are entitled to assume that the person bidding at the *Sale* is bidding on his own behalf. Accordingly, the person bidding at the *Sale* will be the *Buyer* and will be liable to pay the *Hammer Price* and *Buyer's Premium* and associated charges. If we approve the

identity of your client in advance, we will be in a position to address the invoice to your principal rather than you. We will require proof of the agent's client's identity and residence in advance of any bids made by the agent on his behalf. Please refer to our *Conditions of Business* and contact our Customer Services Department for further details.

6. CONTRACTS BETWEEN THE BUYER AND SELLER AND THE BUYER AND BONHAMS

On the *Lot* being knocked down to the *Buyer*, a *Contract for Sale* of the *Lot* will be entered into between the *Seller* and the *Buyer* on the terms of the *Contract for Sale* set out in Appendix 1 at the back of the *Catalogue*. You will be liable to pay the *Purchase Price*, which is the *Hammer Price* plus any applicable *VAT*. At the same time, a separate contract is also entered into between us as *Auctioneers* and the *Buyer*. This is our *Buyer's Agreement*, the terms of which are set out in Appendix 2 at the back of the *Catalogue*. Please read the terms of the *Contract for Sale* and our *Buyer's Agreement* contained in the *Catalogue* in case you are the successful *Bidder*. We may change the terms of either or both of these agreements in advance of their being entered into, by setting out different terms in the *Catalogue* and/or by placing an insert in the *Catalogue* and/or by notices at the *Sale* venue and/or by oral announcements before and during the *Sale*. You should be alert to this possibility of changes and ask if there have been any.

7. BUYER'S PREMIUM AND OTHER CHARGES PAYABLE BY THE BUYER

Under the *Buyer's Agreement*, a premium (the *Buyer's Premium*) is payable to us by the *Buyer* in accordance with the terms of the *Buyer's Agreement* and at rates set out below, calculated by reference to the *Hammer Price* and payable in addition to it. Storage charges and *Expenses* are also payable by the *Buyer* as set out in the *Buyer's Agreement*. All the sums payable to us by the *Buyer* are subject to *VAT*. For this *Sale* the following rates of *Buyer's Premium* will be payable by *Buyers* of *Lots*:

25% up to £25,000 of the *Hammer Price*
20% from £25,001 of the *Hammer Price*
12% from £500,001 of the *Hammer Price*

On certain *Lots*, which will be marked “AR” in the *Catalogue* and which are sold for a *Hammer Price* of €1,000 or greater (converted into the currency of the *Sale* using the European Central Bank Reference rate prevailing on the date of the *Sale*), the *Additional Premium* will be payable to us by the *Buyer* to cover our *Expenses* relating to the payment of royalties under the Artists Resale Right Regulations 2006. The *Additional Premium* will be a percentage of the amount of the *Hammer Price* calculated in accordance with the table below, and shall not exceed €12,500 (converted into the currency of the *Sale* using the European Central Bank Reference rate prevailing on the date of the *Sale*).

<i>Hammer Price</i>	Percentage amount
From €0 to €50,000	4%
From €50,000.01 to €200,000	3%
From €200,000.01 to €350,000	1%
From €350,000.01 to €500,000	0.5%
Exceeding €500,000	0.25%

8. VAT

The prevailing rate of *VAT* at the time of going to press is 20%, but this is subject to government change and the rate payable will be the rate in force on the date of the *Sale*.

The following symbols are used to denote that *VAT* is due on the *Hammer Price* and *Buyer's Premium*:

- † *VAT* at the prevailing rate on *Hammer Price* and *Buyer's Premium*
- Ω *VAT* on imported items at the prevailing rate on *Hammer Price* and *Buyer's Premium*
- * *VAT* on imported items at a preferential rate of 5% on *Hammer Price* and the prevailing rate on *Buyer's Premium*

- G Gold bullion exempt from *VAT* on the *Hammer Price* and subject to *VAT* at the prevailing rate on the *Buyer's Premium*
- Zero rated for *VAT*, no *VAT* will be added to the *Hammer Price* or the *Buyer's Premium*
- α *Buyers* from within the EU: *VAT* is payable at the prevailing rate on just the *Buyer's Premium* (NOT the *Hammer Price*)
- § *Buyers* from outside the EU: *VAT* is payable at the prevailing rate on both *Hammer Price* and *Buyer's Premium*. If a *Buyer*, having registered under a non-EU address, decides that the item is not to be exported from the EU, then he should advise *Bonhams* immediately.

In all other instances no *VAT* will be charged on the *Hammer Price*, but *VAT* at the prevailing rate will be added to *Buyer's Premium* which will be invoiced on a *VAT* inclusive basis.

9. PAYMENT

It is of critical importance that you ensure that you have readily available funds to pay the *Purchase Price* and the *Buyer's Premium* (plus *VAT* and any other charges and *Expenses* to us) in full before making a bid for the *Lot*. If you are a successful *Bidder*, payment will be due to us by 4.30 pm on the second working day after the *Sale* so that all sums are cleared by the eighth working day after the *Sale*. Unless agreed by us in advance payments made by anyone other than the registered *Buyer* will not be accepted. Payment will have to be by one of the following methods (all cheques should be made payable to Bonhams 1793 Limited). *Bonhams* reserves the right to vary the terms of payment at any time.

Sterling personal cheque drawn on a UK branch of a bank or building society: all cheques must be cleared before you can collect your purchases;

Bankers draft/building society cheque: if you can provide suitable proof of identity and we are satisfied as to the genuineness of the draft or cheque, we will allow you to collect your purchases immediately;

Cash: you may pay for *Lots* purchased by you at this *Sale* with notes, coins or travellers cheques in the currency in which the *Sale* is conducted (but not any other currency) provided that the total amount payable by you in respect of all *Lots* purchased by you at the *Sale* does not exceed £5,000, or the equivalent in the currency in which the *Sale* is conducted, at the time when payment is made. If the amount payable by you for *Lots* exceeds that sum, the balance must be paid otherwise than in coins, notes or travellers cheques;

Sterling travellers cheques: you may pay for *Lots* purchased by you at this *Sale* with travellers cheques, provided the total amount payable by you in respect of all *Lots* purchased by you at the *Sale* does not exceed £5,000. We will need to see your passport if you wish to pay using travellers cheques;

Bank transfer: you may electronically transfer funds to our *Trust Account*. If you do so, please quote your paddle number and invoice number as the reference. Our *Trust Account* details are as follows:

Bank: National Westminster Bank Plc
Address: PO Box 4RY
250 Regent Street
London W1A 4RY
Account Name: Bonhams 1793 Limited Trust Account
Account Number: 25563009
Sort Code: 56-00-27
IBAN Number: GB 33 NWBK 560027 25563009

If paying by bank transfer, the amount received after the deduction of any bank fees and/or conversion of the currency of payment to pounds sterling must not be less than the sterling amount payable, as set out on the invoice.

Debit cards: there is no additional charge for purchases made with personal debit cards, issued by a UK bank. Debit cards issued by an overseas bank, deferred and company debit cards and all credit cards will be subject to a 3% surcharge;

Union Pay cards: these are now accepted at our Knightsbridge and New Bond Street offices, when presented in person by the card holder. These cards are subject to a 3% surcharge.

Credit cards: Visa and Mastercard only. Please note there is a 3% surcharge on the total invoice value when payments are made using credit cards. It may be advisable to notify your card provider of your intended purchase in advance to reduce delays caused by us having to seek authority when you come to pay. If you have any questions with regard to payment, please contact our Customer Services Department.

10. COLLECTION AND STORAGE

The *Buyer* of a *Lot* will not be allowed to collect it until payment in full and in cleared funds has been made (unless we have made a special arrangement with the *Buyer*). For collection and removal of purchased *Lots*, please refer to *Sale* Information at the front of the *Catalogue*. Our offices are open 9.00am – 5pm Monday to Friday. Details relating to the collection of a *Lot*, the storage of a *Lot* and our *Storage Contractor* after the *Sale* are set out in the *Catalogue*.

11. SHIPPING

Please refer all enquiries to our shipping department on:
Tel: +44 (0)20 7468 8353/8302 Fax: +44 (0)20 7629 9673
Email: shipping@bonhams.com

12. EXPORT/TRADE RESTRICTIONS

It is your sole responsibility to comply with all export and import regulations relating to your purchases and also to obtain any relevant export and/or import licence(s). Export licences are issued by Arts Council England and application forms can be obtained from its Export Licensing Unit. The detailed provisions of the export licensing arrangements can be found on the ACE website <http://www.artscouncil.org.uk/about-us/museums-and-libraries/cultural-property/export-controls/export-licensing/> or by phoning ACE on +44 (0)20 7973 5228. The need for import licences varies from country to country and you should acquaint yourself with all relevant local requirements and provisions. The refusal of any import or export licence(s) or any delay in obtaining such licence(s) shall not permit the rescission of any *Sale* nor allow any delay in making full payment for the *Lot*. Generally, please contact our shipping department before the *Sale* if you require assistance in relation to export regulations.

13. CITES REGULATIONS

Please be aware that all *Lots* marked with the symbol Y are subject to CITES regulations when exporting these items outside the EU. These regulations may be found at <http://animalhealth.defra.gov.uk/cites/> or may be requested from:

DEFRA, Wildlife Licensing and Registration Service
Floor 1, Zone 17, Temple Quay House
2 The Square, Temple Quay
BRISTOL BS1 6EB

14. THE SELLERS AND/OR BONHAMS' LIABILITY

Other than any liability of the *Seller* to the *Buyer* of a *Lot* under the *Contract for Sale*, neither we nor the *Seller* are liable (whether in negligence or otherwise) for any error or misdescription or omission in any *Description* of a *Lot* or any *Estimate* in respect of it, whether contained in the *Catalogue* or otherwise, whether given orally or in writing and whether given before or during the *Sale*. Neither we nor the *Seller* will be liable for any loss of *Business*, profits, revenue or income, or for loss of reputation, or for disruption to *Business* or wasted time on the part of management or staff, or for indirect losses or consequential damages of any kind, irrespective in any case of the nature, volume or source of the loss or damage alleged to be suffered, and irrespective of whether the said loss or damage is caused by or claimed in respect of any negligence, other tort, breach of contract (if any) or statutory duty, restitutionary claim or otherwise. In any circumstances where we and/or the *Seller* are liable in relation to any *Lot* or any *Description* or *Estimate* made of any *Lot*, or the conduct of any *Sale* in relation to any *Lot*, whether in damages, for an

indemnity or contribution, or for a restitutionary remedy or otherwise, our and/or the *Seller's* liability (combined, if both we and the *Seller* are liable) will be limited to payment of a sum which will not exceed by way of maximum the amount of the *Purchase Price* of the *Lot* irrespective in any case of the nature, volume or source of any loss or damage alleged to be suffered or sum claimed as due, and irrespective of whether the liability arises from any negligence, other tort, breach of contract (if any) or statutory duty or otherwise. Nothing set out above will be construed as excluding or restricting (whether directly or indirectly) our liability or excluding or restricting any person's rights or remedies in respect of (i) fraud, or (ii) death or personal injury caused by our negligence (or by the negligence of any person under our control or for whom we are legally responsible), or (iii) acts or omissions for which we are liable under the Occupiers Liability Act 1957, or (iv) any other liability to the extent the same may not be excluded or restricted as a matter of law or (v) our undertakings under paragraphs 9 (in relation to specialist *Stamp* or *Book Sales* only) and 10 of the *Buyer's Agreement*. The same applies in respect of the *Seller*, as if references to us in this paragraph were substituted with references to the *Seller*.

15. BOOKS

As stated above, all *Lots* are sold on an "as is" basis, subject to all faults, imperfections and errors of *Description* save as set out below. However, you will be entitled to reject a *Book* in the circumstances set out in paragraph 10 of the *Buyers Agreement*. Please note that *Lots* comprising printed *Books*, unframed maps and bound manuscripts are not liable to VAT on the *Buyer's Premium*.

16. CLOCKS AND WATCHES

All *Lots* are sold "as is", and the absence of any reference to the condition of a clock or watch does not imply that the *Lot* is in good condition and without defects, repairs or restorations. Most clocks and watches have been repaired in the course of their normal lifetime and may now incorporate parts not original to them. Furthermore, *Bonhams* makes no representation or warranty that any clock or watch is in working order. As clocks and watches often contain fine and complex mechanisms, *Bidders* should be aware that a general service, change of battery or further repair work, for which the *Buyer* is solely responsible, may be necessary. *Bidders* should be aware that the importation of watches such as Rolex, Frank Muller and Corum into the United States is highly restricted. These watches may not be shipped to the USA and can only be imported personally.

17. FIREARMS – PROOF, CONDITION AND CERTIFICATION

Proof of Firearms

The term "proof exemption" indicates that a firearm has been examined at a Proof House, but not proved, as either (a) it was deemed of interest and not intended for use, or (b) ammunition was not available. In either case, the firearm must be regarded as unsafe to fire unless subsequently proved. Firearms proved for Black Powder should not be used with smokeless ammunition.

The term "Certificate of Unprovability" indicates that a firearm has been examined at a Proof House and is deemed both unsuitable for proof and use. Reproof is required before any such firearm is to be used.

Guns Sold as Parts

Barrels of guns sold as parts will only be made available for sleeving and measurements once rendered unserviceable according to the Gun Barrel Proof Act of 1968 to 1978 and the Rules of Proof.

Condition of Firearms

Comment in this *Catalogue* is restricted, in general, to exceptional condition and to those defects that might affect the immediate safety of a firearm in normal use. An intending *Bidder* unable to make technical examinations and assessments is recommended to seek advice from a gunmaker or from a modern firearms specialist. All prospective *Bidders* are advised to consult the ° of bore and wall-thickness measurements

posted in the saleroom and available from the department. *Bidders* should note that guns are stripped only where there is a strong indication of a mechanical malfunction. Stripping is not, otherwise, undertaken. Guns intended for use should be stripped and cleaned beforehand. Hammer guns should have their rebound mechanisms checked before use. The safety mechanisms of all guns must be tested before use. All measurements are approximate.

Original Gun Specifications Derived from Gunmakers

The Sporting Gun Department endeavours to confirm a gun's original specification and date of manufacture with makers who hold their original records.

Licensing Requirements

Firearms Act 1968 as amended

Bonhams is constantly reviewing its procedures and would remind you that, in the case of firearms or shotguns subject to certification, to conform with current legislation, *Bonhams* is required to see, as appropriate, your original registered firearms dealer's certificate / shot gun certificate / firearm certificate / museum firearms licence / Section 5 authority or import licence (or details of any exemption from which you may benefit, for instance Crown servant status) for the firearm(s) you have purchased prior to taking full payment of the amount shown on your invoice. Should you not already be in possession of such an authority or exemption, you are required to initially pay a deposit of 95% of the total invoice with the balance of 5% payable on presentation of your valid certificate or licence showing your authority to hold the firearm(s) concerned.

Please be advised that if a successful *Bidder* is then unable to produce the correct paperwork, the *Lot(s)* will be reoffered by *Bonhams* in the next appropriate *Sale*, on standard terms for *Sellers*, and you will be responsible for any loss incurred by *Bonhams* on the original *Sale* to you.

In the case of RFD certificates and Section 5 authorities, we wish to keep an up-to-date copy on file. Please supply us with a Fax or photocopy. It would be helpful if you could send us an updated copy whenever your certificate or authority is renewed or changed.

Lots marked 'S1' and bearing red labels are Section 1 firearms and require a valid British Firearms certificate, RFD Licence or import licence.

Lots marked 'S2' and bearing blue labels are Section 2 firearms and require a valid British Shotgun certificate, RFD licence or import licence.

Lots marked 'S5' and bearing specially marked red labels are Section 5 prohibited firearms and require a valid Section 5 Authority or import licence.

Lots marked with a 'S58' and bearing yellow labels are for obsolete calibres and no licence is required unless ammunition is held.

Unmarked *Lots* require no licence.

Please do not hesitate to contact the Modern Sporting Gun Department should you have any queries.

Taxidermy and Related Items

As a *Seller* of these articles, *Bonhams* undertakes to comply fully with Cites and DEFRA regulations. *Buyers* are advised to inform themselves of all such regulations and should expect the exportation of items to take some time to arrange.

18. FURNITURE

Upholstered Furniture

Whilst we take every care in cataloguing furniture which has been upholstered we offer no *Guarantee* as to the originality of the wood covered by fabric or upholstery.

19. JEWELLERY

~ Ruby and Jadeite

Ruby and jadeite gemstones of Burmese (Myanmar) origin may not be imported into the US. Rubies and jadeite of non-Burmese origin require certification before import into the US and it is the *Buyer's* responsibility to obtain all relevant and required export/import licences, certificates and documentation before shipping. Failure by the *Buyer* to successfully import goods into the US does not constitute grounds for non payment or cancellation of *Sale*. *Bonhams* will not be responsible for any additional costs in this regard howsoever incurred.

Gemstones

Historically many gemstones have been subjected to a variety of treatments to enhance their appearance. Sapphires and rubies are routinely heat treated to improve their colour and clarity, similarly emeralds are frequently treated with oils or resin for the same purpose. Other treatments such as staining, irradiation or coating may have been used on other gemstones. These treatments may be permanent, whilst others may need special care or re-treatment over the years to retain their appearance. *Bidders* should be aware that *Estimates* assume that gemstones may have been subjected to such treatments. A number of laboratories issue certificates that give more detailed *Descriptions* of gemstones. However there may not be consensus between different laboratories on the degrees, or types of treatment for any particular gemstone. In the event that *Bonhams* has been given or has obtained certificates for any *Lot* in the *Sale* these certificates will be disclosed in the *Catalogue*. Although, as a matter of policy, *Bonhams* endeavours to provide certificates from recognised laboratories for certain gemstones, it is not feasible to obtain certificates for each *Lot*. In the event that no certificate is published in the *Catalogue*, *Bidders* should assume that the gemstones may have been treated. Neither *Bonhams* nor the *Seller* accepts any liability for contradictions or differing certificates obtained by *Buyers* on any *Lots* subsequent to the *Sale*.

Estimated Weights

If a stone(s) weight appears within the body of the *Description* in capital letters, the stone(s) has been unmounted and weighed by *Bonhams*. If the weight of the stone(s) is stated to be approximate and does not appear in capital letters, the stone(s) has been assessed by us within its/their settings, and the stated weight is a statement of our opinion only. This information is given as a guide and *Bidders* should satisfy themselves with regard to this information as to its accuracy.

Signatures

1. A diamond brooch, by Kutchinsky

When the maker's name appears in the title, in *Bonhams'* opinion the piece is by that maker.

2. A diamond brooch, signed Kutchinsky

Has a signature that, in *Bonhams'* opinion, is authentic but may contain gemstones that are not original, or the piece may have been altered.

3. A diamond brooch, mounted by Kutchinsky

Has been created by the jeweller, in *Bonhams'* opinion, but using stones or designs supplied by the client.

20. PHOTOGRAPHS

Explanation of *Catalogue* Terms

- "Bill Brandt": in our opinion a work by the artist.
- "Attributed to Bill Brandt": in our opinion probably a work by the artist, but less certainty to authorship is expressed than in the preceding category.
- "Signed and/or titled and/or dated and/or inscribed": in our opinion the signature and/or title and/or date and/or inscription are in the artist's hand.
- "Signed and/or titled and/or dated and/or inscribed in another hand": in our opinion the signature and/or title and/or date and/or inscription have been added by another hand.

- The date given is that of the image (negative). Where no further date is given, this indicates that the photographic print is vintage (the term "vintage" may also be included in the *Lot Description*). A vintage photograph is one which was made within approximately 5-10 years of the negative. Where a second, later date appears, this refers to the date of printing. Where the exact printing date is not known, but understood to be later, "printed later" will appear in the *Lot Description*.
- Unless otherwise specified, dimensions given are those of the piece of paper on which the image is printed, including any margins. Some photographs may appear in the *Catalogue* without margins illustrated.
- All photographs are sold unframed unless stated in the *Lot Description*.

21. PICTURES

Explanation of *Catalogue* Terms

The following terms used in the *Catalogue* have the following meanings but are subject to the general provisions relating to *Descriptions* contained in the *Contract for Sale*:

- "Jacopo Bassano": in our opinion a work by the artist. When the artist's forename(s) is not known, a series of asterisks, followed by the surname of the artist, whether preceded by an initial or not, indicates that in our opinion the work is by the artist named;
- "Attributed to Jacopo Bassano": in our opinion probably a work by the artist but less certainty as to authorship is expressed than in the preceding category;
- "Studio/Workshop of Jacopo Bassano": in our opinion a work by an unknown hand in a studio of the artist which may or may not have been executed under the artist's direction;
- "Circle of Jacopo Bassano": in our opinion a work by a hand closely associated with a named artist but not necessarily his pupil;
- "Follower of Jacopo Bassano": in our opinion a work by a painter working in the artist's style, contemporary or nearly contemporary, but not necessarily his pupil;
- "Manner of Jacopo Bassano": in our opinion a work in the style of the artist and of a later date;
- "After Jacopo Bassano": in our opinion, a copy of a known work of the artist;
- "Signed and/or dated and/or inscribed": in our opinion the signature and/or date and/or inscription are from the hand of the artist;
- "Bears a signature and/or date and/or inscription": in our opinion the signature and/or date and/or inscription have been added by another hand.

22. PORCELAIN AND GLASS

Damage and Restoration

For your guidance, in our *Catalogues* we detail, as far as practicable, recorded all significant defects, cracks and restoration. Such practicable *Descriptions* of damage cannot be definitive, and in providing *Condition Reports*, we cannot *Guarantee* that there are no other defects present which have not been mentioned. *Bidders* should satisfy themselves by inspection, as to the condition of each *Lot*. Please see the *Contract for Sale* printed in this *Catalogue*. Because of the difficulty in determining whether an item of glass has been repolished, in our *Catalogues* reference is only made to visible chips and cracks. No mention is made of repolishing, severe or otherwise.

23. VEHICLES

The Veteran Car Club of Great Britain

Dating Plates and Certificates

When mention is made of a Veteran Car Club Dating Plate or Dating Certificate in this *Catalogue*, it should be borne in mind that the Veteran Car Club of Great Britain using the services of Veteran Car Company Ltd, does from time to time, review cars already dated and, in some instances, where fresh evidence becomes available, the review can result in an alteration of date. Whilst the Club and Veteran Car Company Ltd make every effort to ensure accuracy, the date shown on the Dating Plate or Dating Certificate cannot be guaranteed as correct and intending purchasers should make their own enquiries as to the date of the car.

24. WINE

Lots which are lying under Bond and those liable to VAT may not be available for immediate collection.

Examining the wines

It is occasionally possible to provide a pre-*Sale* tasting for larger parcels (as defined below). This is generally limited to more recent and everyday drinking wines. Please contact the department for details.

It is not our policy to inspect every unopened case. In the case of wines older than 20 years the boxes will usually have been opened and levels and appearance noted in the *Catalogue* where necessary. You should make proper allowance for variations in ullage levels and conditions of corks, capsules and labels.

Corks and Ullages

Ullage refers to the space between the base of the cork and the wine. Ullage levels for Bordeaux shaped bottles are only normally noted when below the neck and for Burgundy, Alsace, German and Cognac shaped bottles when greater than 4 centimetres (cm). Acceptable ullage levels increase with age; generally acceptable levels are as follows:

Under 15 years old – into neck or less than 4cm
15 to 30 years old – top shoulder (ts) or up to 5cm
Over 30 years old – high shoulder (hs) or up to 6cm

It should be noted that ullages may change between publication of the *Catalogue* and the *Sale* and that corks may fail as a result of transporting the wine. We will only accept responsibility for *Descriptions* of condition at the time of publication of the *Catalogue* and cannot accept responsibility for any loss resulting from failure of corks either before or after this point.

Options to buy parcels

A parcel is a number of *Lots* of identical size of the same wine, bottle size and *Description*. The *Buyer* of any of these *Lots* has the option to accept some or all of the remaining *Lots* in the parcel at the same price, although such options will be at the *Auctioneer's* sole discretion. Absentee *Bidders* are, therefore, advised to bid on the first *Lot* in a parcel.

Wines in Bond

Wines lying in Bond are marked Δ and VAT is payable by the purchaser, at the standard rate, on the *Hammer Price*, unless the wines are to remain under Bond. *Buyers* requiring their wine to remain in Bond must notify *Bonhams* at the time of the *Sale*. The *Buyer* is then himself responsible for all duty, clearance VAT and other charges that may be payable thereon. All such *Lots* must be transferred or collected within two weeks of the *Sale*.

Buyers outside the UK must be aware that any forwarding agent appointed to export their purchases must have a movement certificate for *Lots* to be released under Bond.

Bottling Details and Case Terms

The following terms used in the *Catalogue* have the following meanings:

CB – Château bottled
DB – Domaine bottled
EstB – Estate bottled
BB – Bordeaux bottled
BE – Belgian bottled
FB – French bottled
GB – German bottled
OB – Oporto bottled
UK – United Kingdom bottled
owc – original wooden case
iwc – individual wooden case
oc – original carton

SYMBOLS

THE FOLLOWING SYMBOLS ARE USED TO DENOTE

- Y Subject to CITES regulations when exporting these items outside the EU, see clause 13.
- W Objects displayed with a w will be located in the Bonhams Warehouse and will only be available for collection from this location.
- ≈ Please note that as a result of recent legislation ruby and jadeite gem stones of Burmese (Myanmar) origin may not be imported into the US. Rubies and jadeite of non-Burmese origin require certification before import into the US.
- Δ Wines lying in Bond.
- AR An *Additional Premium* will be payable to us by the *Buyer* to cover our *Expenses* relating to payment of royalties under the Artists Resale Right Regulations 2006. See clause 7 for details.
- The *Seller* has been guaranteed a minimum price for the *Lot*, either by *Bonhams* or a third party. This may take the form of an irrevocable bid by a third party, who may make a financial gain on a successful *Sale* or a financial loss if unsuccessful.
- ▲ *Bonhams* owns the *Lot* either wholly or partially or may otherwise have an economic interest.

•, †, *, G, Ω, α, § see clause 8, VAT, for details.

DATA PROTECTION – USE OF YOUR INFORMATION

Where we obtain any personal information about you, we shall only use it in accordance with the terms of our Privacy Policy (subject to any additional specific consent(s) you may have given at the time your information was disclosed). A copy of our Privacy Policy can be found on our Website www.bonhams.com or requested by post from Customer Services Department, 101 New Bond Street, London, W1S 1SR or by email from info@bonhams.com

APPENDIX 1

CONTRACT FOR SALE

IMPORTANT: These terms may be changed in advance of the *Sale* of the *Lot* to you, by the setting out of different terms in the *Catalogue* for the *Sale* and/or by placing an insert in the *Catalogue* and/or by notices at the *Sale* venue and/or by oral announcements before and during the *Sale* at the *Sale* venue. You should be alert to this possibility of changes and ask in advance of bidding if there have been any.

Under this contract the *Seller's* liability in respect of the quality of the *Lot*, its fitness for any purpose and its conformity with any *Description* is limited. You are strongly advised to examine the *Lot* for yourself and/or obtain an independent examination of it before you buy it.

1 THE CONTRACT

- 1.1 These terms govern the *Contract for Sale* of the *Lot* by the *Seller* to the *Buyer*.
- 1.2 The Definitions and Glossary contained in Appendix 3 in the *Catalogue* are incorporated into this *Contract for Sale* and a separate copy can also be provided by *Bonhams* on request. Where words and phrases are used which are in the List of Definitions, they are printed in italics.
- 1.3 The *Seller* sells the *Lot* as the principal to the *Contract for Sale*, such contract being made between the *Seller* and you through *Bonhams* which acts in the sole capacity as the *Seller's* agent and not as an additional principal. However, if the *Catalogue* states that *Bonhams* sells the *Lot* as principal, or such a statement is made by an announcement by the *Auctioneer*, or by a notice at the *Sale*, or an insert in the *Catalogue*, then *Bonhams* is the *Seller* for the purposes of this agreement.
- 1.4 The contract is made on the fall of the *Auctioneer's* hammer in respect of the *Lot* when it is knocked down to you.

2 SELLER'S UNDERTAKINGS

- 2.1 The *Seller* undertakes to you that:
- 2.1.1 the *Seller* is the owner of the *Lot* or is duly authorised to sell the *Lot* by the owner;
- 2.1.2 save as disclosed in the *Entry* for the *Lot* in the *Catalogue*, the *Seller* sells the *Lot* with full title guarantee or, where the *Seller* is an executor, trustee, liquidator, receiver or administrator, with whatever right, title or interest he may have in the *Lot*;
- 2.1.3 except where the *Sale* is by an executor, trustee, liquidator, receiver or administrator the *Seller* is both legally entitled to sell the *Lot*, and legally capable of conferring on you quiet possession of the *Lot* and that the *Sale* conforms in every respect with the terms implied by the Sale of Goods Act 1979, Sections 12(1) and 12(2) (see the Definitions and Glossary);
- 2.1.4 the *Seller* has complied with all requirements, legal or otherwise, relating to any export or import of the *Lot*, and all duties and taxes in respect of the export or import of the *Lot* have (unless stated to the contrary in the *Catalogue* or announced by the *Auctioneer*) been paid and, so far as the *Seller* is aware, all third parties have complied with such requirements in the past;
- 2.1.5 subject to any alterations expressly identified as such made by announcement or notice at the *Sale* venue or by the *Notice to Bidders* or by an insert in the *Catalogue*, the *Lot* corresponds with the *Contractual Description* of the *Lot*, being that part of the *Entry* about the *Lot* in the *Catalogue* which is in bold letters and (except for colour) with any photograph of the *Lot* in the *Catalogue* and the contents of any *Condition Report* which has been provided to the *Buyer*.

3 DESCRIPTIONS OF THE LOT

- 3.1 Paragraph 2.1.5 sets out what is the *Contractual Description* of the *Lot*. In particular, the *Lot* is not sold as corresponding with that part of the *Entry* in the *Catalogue* which is not printed in bold letters, which merely sets out (on the *Seller's* behalf) *Bonhams'* opinion about the *Lot* and which is not part of the *Contractual Description* upon which the *Lot* is sold. Any statement or representation other than that part of the *Entry* referred to in paragraph 2.1.5 (together with any express alteration to it as referred to in paragraph 2.1.5), including any *Description* or *Estimate*, whether made orally or in writing, including in the *Catalogue* or on *Bonhams' Website*, or by conduct, or otherwise, and whether by or on behalf of the *Seller* or *Bonhams* and whether made prior to or during the *Sale*, is not part of the *Contractual Description* upon which the *Lot* is sold.
- 3.2 Except as provided in paragraph 2.1.5, the *Seller* does not make or give and does not agree to make or give any contractual promise, undertaking, obligation, guarantee, warranty, or representation of fact, or undertake any duty of care, in relation to any *Description* of the *Lot* or any *Estimate* in relation to it, nor of the accuracy or completeness of any *Description* or *Estimate* which may have been made by or on behalf of the *Seller* including by *Bonhams*. No such *Description* or *Estimate* is incorporated into this *Contract for Sale*.

4 FITNESS FOR PURPOSE AND SATISFACTORY QUALITY

- 4.1 The *Seller* does not make and does not agree to make any contractual promise, undertaking, obligation, guarantee, warranty, or representation of fact in relation to the satisfactory quality of the *Lot* or its fitness for any purpose.

- 4.2 The *Seller* will not be liable for any breach of any undertaking, whether implied by the Sale of Goods Act 1979 or otherwise, as to the satisfactory quality of the *Lot* or its fitness for any purpose.

5 RISK, PROPERTY AND TITLE

- 5.1 Risk in the *Lot* passes to you when it is knocked down to you on the fall of the *Auctioneer's* hammer in respect of the *Lot*. The *Seller* will not be responsible thereafter for the *Lot* prior to you collecting it from *Bonhams* or the *Storage Contractor*, with whom you have separate contract(s) as *Buyer*. You will indemnify the *Seller* and keep the *Seller* fully indemnified from and against all claims, proceedings, costs, expenses and losses arising in respect of any injury, loss and damage caused to the *Lot* after the fall of the *Auctioneer's* hammer until you obtain full title to it.
- 5.2 Title to the *Lot* remains in and is retained by the *Seller* until the *Purchase Price* and all other sums payable by you to *Bonhams* in relation to the *Lot* have been paid in full to, and received in cleared funds by, *Bonhams*.

6 PAYMENT

- 6.1 Your obligation to pay the *Purchase Price* arises when the *Lot* is knocked down to you on the fall of the *Auctioneer's* hammer in respect of the *Lot*.
- 6.2 Time will be of the essence in relation to payment of the *Purchase Price* and all other sums payable by you to *Bonhams*. Unless agreed in writing with you by *Bonhams* on the *Seller's* behalf (in which case you must comply with the terms of that agreement), all such sums must be paid to *Bonhams* by you in the currency in which the *Sale* was conducted by not later than 4.30pm on the second working day following the *Sale* and you must ensure that the funds are cleared by the seventh working day after the *Sale*. Payment must be made to *Bonhams* by one of the methods stated in the *Notice to Bidders* unless otherwise agreed with you in writing by *Bonhams*. If you do not pay any sums due in accordance with this paragraph, the *Seller* will have the rights set out in paragraph 8 below.

7 COLLECTION OF THE LOT

- 7.1 Unless otherwise agreed in writing with you by *Bonhams*, the *Lot* will be released to you or to your order only when *Bonhams* has received cleared funds to the amount of the full *Purchase Price* and all other sums owed by you to the *Seller* and to *Bonhams*.
- 7.2 The *Seller* is entitled to withhold possession from you of any other *Lot* he has sold to you at the same or at any other *Sale* and whether currently in *Bonhams'* possession or not until payment in full and in cleared funds of the *Purchase Price* and all other sums due to the *Seller* and/or *Bonhams* in respect of the *Lot*.
- 7.3 You will collect and remove the *Lot* at your own expense from *Bonhams'* custody and/ or control or from the *Storage Contractor's* custody in accordance with *Bonhams'* instructions or requirements.
- 7.4 You will be wholly responsible for packing, handling and transport of the *Lot* on collection and for complying with all import or export regulations in connection with the *Lot*.
- 7.5 You will be wholly responsible for any removal, storage or other charges or *Expenses* incurred by the *Seller* if you do not remove the *Lot* in accordance with this paragraph 7 and will indemnify the *Seller* against all charges, costs, including any legal costs and fees, *Expenses* and losses suffered by the *Seller* by reason of your failure to remove the *Lot* including any charges due under any *Storage Contract*. All such sums due to the *Seller* will be payable on demand.

8	FAILURE TO PAY FOR THE LOT																																																																																																																																																																																																																																																																																																																																																																																																																																																																																																																																																																																																																																																																																																																																																																																																																																																																																																																																																																																																																																																																																																																																																																																																																																																																																																																																																																																																																																																					</
---	----------------------------	--	--	--	--	--	--	--	--	--	--	--	--	--	--	--	--	--	--	--	--	--	--	--	--	--	--	--	--	--	--	--	--	--	--	--	--	--	--	--	--	--	--	--	--	--	--	--	--	--	--	--	--	--	--	--	--	--	--	--	--	--	--	--	--	--	--	--	--	--	--	--	--	--	--	--	--	--	--	--	--	--	--	--	--	--	--	--	--	--	--	--	--	--	--	--	--	--	--	--	--	--	--	--	--	--	--	--	--	--	--	--	--	--	--	--	--	--	--	--	--	--	--	--	--	--	--	--	--	--	--	--	--	--	--	--	--	--	--	--	--	--	--	--	--	--	--	--	--	--	--	--	--	--	--	--	--	--	--	--	--	--	--	--	--	--	--	--	--	--	--	--	--	--	--	--	--	--	--	--	--	--	--	--	--	--	--	--	--	--	--	--	--	--	--	--	--	--	--	--	--	--	--	--	--	--	--	--	--	--	--	--	--	--	--	--	--	--	--	--	--	--	--	--	--	--	--	--	--	--	--	--	--	--	--	--	--	--	--	--	--	--	--	--	--	--	--	--	--	--	--	--	--	--	--	--	--	--	--	--	--	--	--	--	--	--	--	--	--	--	--	--	--	--	--	--	--	--	--	--	--	--	--	--	--	--	--	--	--	--	--	--	--	--	--	--	--	--	--	--	--	--	--	--	--	--	--	--	--	--	--	--	--	--	--	--	--	--	--	--	--	--	--	--	--	--	--	--	--	--	--	--	--	--	--	--	--	--	--	--	--	--	--	--	--	--	--	--	--	--	--	--	--	--	--	--	--	--	--	--	--	--	--	--	--	--	--	--	--	--	--	--	--	--	--	--	--	--	--	--	--	--	--	--	--	--	--	--	--	--	--	--	--	--	--	--	--	--	--	--	--	--	--	--	--	--	--	--	--	--	--	--	--	--	--	--	--	--	--	--	--	--	--	--	--	--	--	--	--	--	--	--	--	--	--	--	--	--	--	--	--	--	--	--	--	--	--	--	--	--	--	--	--	--	--	--	--	--	--	--	--	--	--	--	--	--	--	--	--	--	--	--	--	--	--	--	--	--	--	--	--	--	--	--	--	--	--	--	--	--	--	--	--	--	--	--	--	--	--	--	--	--	--	--	--	--	--	--	--	--	--	--	--	--	--	--	--	--	--	--	--	--	--	--	--	--	--	--	--	--	--	--	--	--	--	--	--	--	--	--	--	--	--	--	--	--	--	--	--	--	--	--	--	--	--	--	--	--	--	--	--	--	--	--	--	--	--	--	--	--	--	--	--	--	--	--	--	--	--	--	--	--	--	--	--	--	--	--	--	--	--	--	--	--	--	--	--	--	--	--	--	--	--	--	--	--	--	--	--	--	--	--	--	--	--	--	--	--	--	--	--	--	--	--	--	--	--	--	--	--	--	--	--	--	--	--	--	--	--	--	--	--	--	--	--	--	--	--	--	--	--	--	--	--	--	--	--	--	--	--	--	--	--	--	--	--	--	--	--	--	--	--	--	--	--	--	--	--	--	--	--	--	--	--	--	--	--	--	--	--	--	--	--	--	--	--	--	--	--	--	--	--	--	--	--	--	--	--	--	--	--	--	--	--	--	--	--	--	--	--	--	--	--	--	--	--	--	--	--	--	--	--	--	--	--	--	--	--	--	--	--	--	--	--	--	--	--	--	--	--	--	--	--	--	--	--	--	--	--	--	--	--	--	--	--	--	--	--	--	--	--	--	--	--	--	--	--	--	--	--	--	--	--	--	--	--	--	--	--	--	--	--	--	--	--	--	--	--	--	--	--	--	--	--	--	--	--	--	--	--	--	--	--	--	--	--	--	--	--	--	--	--	--	--	--	--	--	--	--	--	--	--	--	--	--	--	--	--	--	--	--	--	--	--	--	--	--	--	--	--	--	--	--	--	--	--	--	--	--	--	--	--	--	--	--	--	--	--	--	--	--	--	--	--	--	--	--	--	--	--	--	--	--	--	--	--	--	--	--	--	--	--	--	--	--	--	--	--	--	--	--	--	--	--	--	--	--	--	--	--	--	--	--	--	--	--	--	--	--	--	--	--	--	--	--	--	--	--	--	--	--	--	--	--	--	--	--	--	--	--	--	--	--	--	--	--	--	--	--	--	--	--	--	--	--	--	--	--	--	--	--	--	--	--	--	--	--	--	--	--	--	--	--	--	--	--	--	--	--	--	--	--	--	--	--	--	--	--	--	--	--	--	--	--	--	--	--	--	--	--	--	--	--	--	--	--	--	--	--	--	--	--	--	--	--	--	--	--	--	--	--	--	--	--	--	--	--	--	--	--	--	--	--	--	--	--	--	--	--	--	--	--	--	--	--	--	--	--	--	--	--	--	--	--	--	--	--	--	--	--	--	--	--	--	--	--	--	--	--	--	--	--	--	--	--	--	--	--	--	--	--	--	--	--	--	--	--	--	--	--	--	--	--	--	--	--	--	--	--	--	--	--	--	--	--	--	--	--	--	--	--	--	--	--	--	--	--	--	--	--	--	--	--	--	--	--	--	--	--	--	--	--	--	--	--	--	--	--	--	--	--	--	--	--	--	--	--	--	--	--	--	--	--	--	--	--	--	--	--	--	--	--	--	--	--	--	--	--	--	--	--	--	--	--	--	--	--	--	--	--	--	--	--	--	--	--	--	--	--	--	--	--	--	--	--	--	--	--	--	--	--	--	--	--	--	--	--	--	--	--	--	--	--	--	--	--	--	--	--	--	--	--	--	--	--	--	--	--	--	--	--	--	--	--	--	--	--	--	--	--	--	--	--	--	--	--	--	--	--	--	--	--	--	--	--	--	--	--	--	--	--	--	--	--	--	--	--	--	--	--	--	--	--	--	--	--	--	--	--	--	--	--	--	--	--	--	--	--	--	--	--	--	--	--	--	--	--	--	--	--	--	--	--	--	--	--	--	--	--	--	--	--	--	--	--	--	--	--	--	--	--	--	--	--	--	--	--	--	--	--	--	--	--	--	--	--	--	--	--	--	--	--	--	--	--	--	--	--	--	--	--	--	--	--	--	--	--	--	--	--	--	--	--	--	--	--	--	--	--	--	--	--	--	--	--	--	--	--	--	--	--	--	--	--	--	--	--	--	--	--	--	--	--	--	--	--	--	----

11 GOVERNING LAW

All transactions to which the *Contract for Sale* applies and all connected matters will be governed by and construed in accordance with the laws of that part of the United Kingdom where the *Sale* takes place and the *Seller* and you each submit to the exclusive jurisdiction of the courts of that part of the United Kingdom, save that the *Seller* may bring proceedings against you in any other court of competent jurisdiction to the extent permitted by the laws of the relevant jurisdiction. *Bonhams* has a complaints procedure in place.

APPENDIX 2

BUYER'S AGREEMENT

IMPORTANT: These terms may be changed in advance of the *Sale* of the *Lot* to you, by the setting out of different terms in the *Catalogue* for the *Sale* and/or by placing an insert in the *Catalogue* and/or by notices at the *Sale* venue and/or by oral announcements before and during the *Sale* at the *Sale* venue. You should be alert to this possibility of changes and ask in advance of bidding if there have been any.

1 THE CONTRACT

- 1.1 These terms govern the contract between *Bonhams* personally and the *Buyer*, being the person to whom a *Lot* has been knocked down by the *Auctioneer*.
- 1.2 The Definitions and Glossary contained in Appendix 3 to the *Catalogue* for the *Sale* are incorporated into this agreement and a separate copy can also be provided by us on request. Where words and phrases which are defined in the List of Definitions are used in this agreement, they are printed in italics. Reference is made in this agreement to information printed in the *Notice to Bidders*, printed in the *Catalogue* for the *Sale*, and where such information is referred to it is incorporated into this agreement.
- 1.3 Except as specified in paragraph 4 of the *Notice to Bidders* the *Contract for Sale* of the *Lot* between you and the *Seller* is made on the fall of the *Auctioneer's* hammer in respect of the *Lot*, when it is knocked down to you. At that moment a separate contract is also made between you and *Bonhams* on the terms in this *Buyer's Agreement*.
- 1.4 We act as agents for the *Seller* and are not answerable or personally responsible to you for any breach of contract or other default by the *Seller*, unless *Bonhams* sells the *Lot* as principal.
- 1.5 Our personal obligations to you are governed by this agreement and we agree, subject to the terms below, to the following obligations:
 - 1.5.1 we will, until the date and time specified in the *Notice to Bidders* or otherwise notified to you, store the *Lot* in accordance with paragraph 5;
 - 1.5.2 subject to any power of the *Seller* or us to refuse to release the *Lot* to you, we will release the *Lot* to you in accordance with paragraph 4 once you have paid to us, in cleared funds, everything due to us and the *Seller*;
 - 1.5.3 we will provide guarantees in the terms set out in paragraphs 9 and 10.
- 1.6 We do not make or give and do not agree to make or give any contractual promise, undertaking, obligation, *Guarantee*, warranty, representation of fact in relation to any *Description* of the *Lot* or any *Estimate* in relation to it, nor of the accuracy or completeness of any *Description* or *Estimate* which may have been made by us or on our behalf or by or on behalf of the *Seller* (whether made orally or in

writing, including in the *Catalogue* or on *Bonhams' Website*, or by conduct, or otherwise), and whether made before or after this agreement or prior to or during the *Sale*. No such *Description* or *Estimate* is incorporated into this agreement between you and us. Any such *Description* or *Estimate*, if made by us or on our behalf, was (unless *Bonhams* itself sells the *Lot* as principal) made as agent on behalf of the *Seller*.

2 PERFORMANCE OF THE CONTRACT FOR SALE

You undertake to us personally that you will observe and comply with all your obligations and undertakings to the *Seller* under the *Contract for Sale* in respect of the *Lot*.

3 PAYMENT

- 3.1 Unless agreed in writing between you and us or as otherwise set out in the *Notice to Bidders*, you must pay to us by not later than 4.30pm on the second working day following the *Sale*:
 - 3.1.1 the *Purchase Price* for the *Lot*;
 - 3.1.2 a *Buyer's Premium* in accordance with the rates set out in the *Notice to Bidders*, and
 - 3.1.3 if the *Lot* is marked [AR], an *Additional Premium* which is calculated and payable in accordance with the *Notice to Bidders* together with VAT on that sum if applicable so that all sums due to us are cleared funds by the seventh working day after the *Sale*.
- 3.2 You must also pay us on demand any *Expenses* payable pursuant to this agreement.
- 3.3 All payments to us must be made in the currency in which the *Sale* was conducted, using, unless otherwise agreed by us in writing, one of the methods of payment set out in the *Notice to Bidders*. Our invoices will only be addressed to the registered *Bidder* unless the *Bidder* is acting as an agent for a named principal and we have approved that arrangement, in which case we will address the invoice to the principal.
- 3.4 Unless otherwise stated in this agreement all sums payable to us will be subject to VAT at the appropriate rate and VAT will be payable by you on all such sums.
- 3.5 We may deduct and retain for our own benefit from the monies paid by you to us the *Buyer's Premium*, the *Commission* payable by the *Seller* in respect of the *Lot*, any *Expenses* and VAT and any interest earned and/or incurred until payment to the *Seller*.
- 3.6 Time will be of the essence in relation to any payment payable to us. If you do not pay the *Purchase Price*, or any other sum due to us in accordance with this paragraph 3, we will have the rights set out in paragraph 7 below.
- 3.7 Where a number of *Lots* have been knocked down to you, any monies we receive from you will be applied firstly pro-rata to pay the *Purchase Price* of each *Lot* and secondly pro-rata to pay all amounts due to *Bonhams*.

4 COLLECTION OF THE LOT

- 4.1 Subject to any power of the *Seller* or us to refuse to release the *Lot* to you, once you have paid to us, in cleared funds, everything due to the *Seller* and to us, we will release the *Lot* to you or as you may direct us in writing. The *Lot* will only be released on production of a buyer collection document, obtained from our cashier's office.

- 4.2 You must collect and remove the *Lot* at your own expense by the date and time specified in the *Notice to Bidders*, or if no date is specified, by 4.30pm on the seventh day after the *Sale*.
 - 4.3 For the period referred to in paragraph 4.2, the *Lot* can be collected from the address referred to in the *Notice to Bidders* for collection on the days and times specified in the *Notice to Bidders*. Thereafter, the *Lot* may be removed elsewhere for storage and you must enquire from us as to when and where you can collect it, although this information will usually be set out in the *Notice to Bidders*.
 - 4.4 If you have not collected the *Lot* by the date specified in the *Notice to Bidders*, you authorise us, acting as your agent and on your behalf, to enter into a contract (the "*Storage Contract*") with the *Storage Contractor* for the storage of the *Lot* on the then current standard terms and conditions agreed between *Bonhams* and the *Storage Contractor* (copies of which are available on request). If the *Lot* is stored at our premises storage fees at our current daily rates (currently a minimum of £3 plus VAT per *Lot* per day) will be payable from the expiry of the period referred to in paragraph 4.2. These storage fees form part of our *Expenses*.
 - 4.5 Until you have paid the *Purchase Price* and any *Expenses* in full the *Lot* will either be held by us as agent on behalf of the *Seller* or held by the *Storage Contractor* as agent on behalf of the *Seller* and ourselves on the terms contained in the *Storage Contract*.
 - 4.6 You undertake to comply with the terms of any *Storage Contract* and in particular to pay the charges (and all costs of moving the *Lot* into storage) due under any *Storage Contract*. You acknowledge and agree that you will not be able to collect the *Lot* from the *Storage Contractor's* premises until you have paid the *Purchase Price*, any *Expenses* and all charges due under the *Storage Contract*.
 - 4.7 You will be wholly responsible for packing, handling and transport of the *Lot* on collection and for complying with all import or export regulations in connection with the *Lot*.
 - 4.8 You will be wholly responsible for any removal, storage, or other charges for any *Lot* not removed in accordance with paragraph 4.2, payable at our current rates, and any *Expenses* we incur (including any charges due under the *Storage Contract*), all of which must be paid by you on demand and in any event before any collection of the *Lot* by you or on your behalf.
- #### 5 STORING THE LOT
- We agree to store the *Lot* until the earlier of your removal of the *Lot* or until the time and date set out in the *Notice to Bidders*, on the Sale Information Page or at the back of the catalogue (or if no date is specified, by 4.30pm on the seventh day after the *Sale*) and, subject to paragraphs 6 and 10, to be responsible as *bailee* to you for damage to or the loss or destruction of the *Lot* (notwithstanding that it is not your property before payment of the *Purchase Price*). If you do not collect the *Lot* before the time and date set out in the *Notice to Bidders* (or if no date is specified, by 4.30pm on the seventh day after the *Sale*) we may remove the *Lot* to another location, the details of which will usually be set out in the relevant section of the *Catalogue*. If you have not paid for the *Lot* in accordance with paragraph 3, and the *Lot* is moved to any third party's premises, the *Lot* will be held by such third party strictly to *Bonhams'* order and we will retain our lien over the *Lot* until we have been paid in full in accordance with paragraph 3.

6	RESPONSIBILITY FOR THE LOT		
6.1	Only on the payment of the <i>Purchase Price</i> to us will title in the <i>Lot</i> pass to you. However under the <i>Contract for Sale</i> , the risk in the <i>Lot</i> passed to you when it was knocked down to you.	7.2	You agree to indemnify us against all legal and other costs, all losses and all other <i>Expenses</i> (whether or not court proceedings will have been issued) incurred by us as a result of our taking steps under this paragraph 7 on a full indemnity basis together with interest thereon (after as well as before judgement or order) at the rate specified in paragraph 7.1.5 from the date upon which we become liable to pay the same until payment by you.
6.2	You are advised to obtain insurance in respect of the <i>Lot</i> as soon as possible after the <i>Sale</i> .		9.2.2 you notify us in writing as soon as reasonably practicable after you have become aware that the <i>Lot</i> is or may be a <i>Forgery</i> , and in any event within one year after the <i>Sale</i> , that the <i>Lot</i> is a <i>Forgery</i> ; and
7	FAILURE TO PAY OR TO REMOVE THE LOT AND PART PAYMENTS		9.2.3 within one month after such notification has been given, you return the <i>Lot</i> to us in the same condition as it was at the time of the <i>Sale</i> , accompanied by written evidence that the <i>Lot</i> is a <i>Forgery</i> and details of the <i>Sale</i> and <i>Lot</i> number sufficient to identify the <i>Lot</i> .
7.1	If all sums payable to us are not so paid in full at the time they are due and/or the <i>Lot</i> is not removed in accordance with this agreement, we will without further notice to you be entitled to exercise one or more of the following rights (without prejudice to any rights we may exercise on behalf of the <i>Seller</i>):	7.3	If you pay us only part of the sums due to us such payment shall be applied firstly to the <i>Purchase Price</i> of the <i>Lot</i> (or where you have purchased more than one <i>Lot</i> pro-rata towards the <i>Purchase Price</i> of each <i>Lot</i>) and secondly to the <i>Buyer's Premium</i> (or where you have purchased more than one <i>Lot</i> pro-rata to the <i>Buyer's Premium</i> on each <i>Lot</i>) and thirdly to any other sums due to us.
7.1.1	to terminate this agreement immediately for your breach of contract;	7.4	We will account to you in respect of any balance we hold remaining from any monies received by us in respect of any <i>Sale</i> of the <i>Lot</i> under our rights under this paragraph 7 after the payment of all sums due to us and/or the <i>Seller</i> within 28 days of receipt by us of all such sums paid to us.
7.1.2	to retain possession of the <i>Lot</i> ;	8	CLAIMS BY OTHER PERSONS IN RESPECT OF THE LOT
7.1.3	to remove, and/or store the <i>Lot</i> at your expense;	8.1	Whenever it becomes apparent to us that the <i>Lot</i> is the subject of a claim by someone other than you and other than the <i>Seller</i> (or that such a claim can reasonably be expected to be made), we may, at our absolute discretion, deal with the <i>Lot</i> in any manner which appears to us to recognise the legitimate interests of ourselves and the other parties involved and lawfully to protect our position and our legitimate interests. Without prejudice to the generality of the discretion and by way of example, we may:
7.1.4	to take legal proceedings against you for payment of any sums payable to us by you (including the <i>Purchase Price</i>) and/or damages for breach of contract;	8.1.1	retain the <i>Lot</i> to investigate any question raised or reasonably expected by us to be raised in relation to the <i>Lot</i> ; and/or
7.1.5	to be paid interest on any monies due to us (after as well as before judgement or order) at the annual rate of 5% per annum above the base lending rate of National Westminster Bank Plc from time to time to be calculated on a daily basis from the date upon which such monies become payable until the date of actual payment;	8.1.2	deliver the <i>Lot</i> to a person other than you; and/or
7.1.6	to repossess the <i>Lot</i> (or any part thereof) which has not become your property, and for this purpose (unless you buy the <i>Lot</i> as a <i>Consumer</i>) you hereby grant an irrevocable licence to us, by ourselves, our servants or agents, to enter upon all or any of your premises (with or without vehicles) during normal business hours to take possession of any <i>Lot</i> or part thereof;	8.1.3	commence interpleader proceedings or seek any other order of any court, mediator, arbitrator or government body; and/or
7.1.7	to sell the <i>Lot Without Reserve</i> by auction, private treaty or any other means on giving you three months' written notice of our intention to do so;	8.1.4	require an indemnity and/or security from you in return for pursuing a course of action agreed to by you.
7.1.8	to retain possession of any of your other property in our possession for any purpose (including, without limitation, other goods sold to you or with us for <i>Sale</i>) until all sums due to us have been paid in full;	8.2	The discretion referred to in paragraph 8.1:
7.1.9	to apply any monies received from you for any purpose whether at the time of your default or at any time thereafter in payment or part payment of any sums due to us by you under this agreement;	8.2.1	may be exercised at any time during which we have actual or constructive possession of the <i>Lot</i> , or at any time after such possession, where the cessation of such possession has occurred by reason of any decision, order or ruling of any court, mediator, arbitrator or government body; and
7.1.10	on three months' written notice to sell, <i>Without Reserve</i> , any of your other property in our possession or under our control for any purpose (including other goods sold to you or with us for <i>Sale</i>) and to apply any monies due to you as a result of such <i>Sale</i> in payment or part payment of any amounts owed to us;	8.2.2	will not be exercised unless we believe that there exists a serious prospect of a good arguable case in favour of the claim.
7.1.11	refuse to allow you to register for a future <i>Sale</i> or to reject a bid from you at any future <i>Sale</i> or to require you to pay a deposit before any bid is accepted by us at any future <i>Sale</i> in which case we will be entitled to apply such deposit in payment or part payment, as the case may be, of the <i>Purchase Price</i> of any <i>Lot</i> of which you are the <i>Buyer</i> .	9	FORGERIES
		9.1	We undertake a personal responsibility for any <i>Forgery</i> in accordance with the terms of this paragraph 9.
		9.2	Paragraph 9 applies only if:
		9.2.1	your name appears as the named person to whom the original invoice was made out by us in respect of the <i>Lot</i> and that invoice has been paid; and
		9.3	Paragraph 9 will not apply in respect of a <i>Forgery</i> if:
		9.3.1	the <i>Entry</i> in relation to the <i>Lot</i> contained in the <i>Catalogue</i> reflected the then accepted general opinion of scholars and experts or fairly indicated that there was a conflict of such opinion or reflected the then current opinion of an expert acknowledged to be a leading expert in the relevant field; or
		9.3.2	it can be established that the <i>Lot</i> is a <i>Forgery</i> only by means of a process not generally accepted for use until after the date on which the <i>Catalogue</i> was published or by means of a process which it was unreasonable in all the circumstances for us to have employed.
		9.4	You authorise us to carry out such processes and tests on the <i>Lot</i> as we in our absolute discretion consider necessary to satisfy ourselves that the <i>Lot</i> is or is not a <i>Forgery</i> .
		9.5	If we are satisfied that a <i>Lot</i> is a <i>Forgery</i> we will (as principal) purchase the <i>Lot</i> from you and you will transfer the title to the <i>Lot</i> in question to us, with full title guarantee, free from any liens, charges, encumbrances and adverse claims, in accordance with the provisions of Sections 12(1) and 12(2) of the Sale of Goods Act 1979 and we will pay to you an amount equal to the sum of the <i>Purchase Price</i> , <i>Buyer's Premium</i> , VAT and <i>Expenses</i> paid by you in respect of the <i>Lot</i> .
		9.6	The benefit of paragraph 9 is personal to, and incapable of assignment by, you.
		9.7	If you sell or otherwise dispose of your interest in the <i>Lot</i> , all rights and benefits under this paragraph will cease.
		9.8	Paragraph 9 does not apply to a <i>Lot</i> made up of or including a Chinese painting or Chinese paintings, a motor vehicle or motor vehicles, a <i>Stamp</i> or <i>Stamps</i> or a <i>Book</i> or <i>Books</i> .
		10	OUR LIABILITY
		10.1	We will not be liable whether in negligence, other tort, breach of contract or statutory duty or in restitution or under the Misrepresentation Act 1967 or in any other way for lack of conformity with or any inaccuracy, error, misdescription or omission in any <i>Description</i> of the <i>Lot</i> or any <i>Entry</i> or <i>Estimate</i> in respect of it, made by us or on our behalf or by or on behalf of the <i>Seller</i> (whether made in writing, including in the <i>Catalogue</i> , or on the <i>Bonhams' Website</i> , or orally, or by conduct or otherwise) and whether made before or after this agreement or prior to or during the <i>Sale</i> .
		10.2	Our duty to you while the <i>Lot</i> is at your risk and/or your property and in our custody and/or control is to exercise reasonable care in relation to it, but we will not be responsible for damage to the <i>Lot</i> or to other persons or things caused by:
		10.2.1	handling the <i>Lot</i> if it was affected at the time of <i>Sale</i> to you by woodworm and any damage is caused as a result of it being affected by woodworm; or

- 10.2.2 changes in atmospheric pressure; nor will we be liable for;
- 10.2.3 damage to tension stringed musical instruments; or
- 10.2.4 damage to gilded picture frames, plaster picture frames or picture frame glass; and if the *Lot* is or becomes dangerous, we may dispose of it without notice to you in advance in any manner we think fit and we will be under no liability to you for doing so.

- 10.3.1 We will not be liable to you for any loss of *Business*, *Business* profits, revenue or income or for loss of *Business* reputation or for disruption to *Business* or wasted time on the part of the *Buyer's* management or staff or, if you are buying the *Lot* in the course of a *Business*, for any indirect losses or consequential damages of any kind, irrespective in any case of the nature, volume or source of the loss or damage alleged to be suffered, and irrespective of whether the said loss or damage is caused by or claimed in respect of any negligence, other tort, breach of contract, statutory duty, bailee's duty, a restitutionary claim or otherwise.

- 10.3.2 Unless you buy the *Lot* as a *Consumer*, in any circumstances where we are liable to you in respect of a *Lot*, or any act, omission, statement, representation in respect of it, or this agreement or its performance, and whether in damages, for an indemnity or contribution or for a restitutionary remedy or in any way whatsoever, our liability will be limited to payment of a sum which will not exceed by way of maximum the amount of the *Purchase Price* of the *Lot* plus *Buyer's Premium* (less any sum you may be entitled to recover from the *Seller*) irrespective in any case of the nature, volume or source of any loss or damage alleged to be suffered or sum claimed as due, and irrespective of whether the liability arises from negligence, other tort, breach of contract, statutory duty, bailee's duty, a restitutionary claim or otherwise.

You may wish to protect yourself against loss by obtaining insurance.

- 10.4 Nothing set out above will be construed as excluding or restricting (whether directly or indirectly) any person's liability or excluding or restricting any person's rights or remedies in respect of (i) fraud, or (ii) death or personal injury caused by our negligence (or any person under our control or for whom we are legally responsible), or (iii) acts or omissions for which we are liable under the Occupiers Liability Act 1957, or (iv) any other liability to the extent the same may not be excluded or restricted as a matter of law, or (v) under our undertaking in paragraph 9 of these conditions.

11 MISCELLANEOUS

- 11.1 You may not assign either the benefit or burden of this agreement.
- 11.2 Our failure or delay in enforcing or exercising any power or right under this agreement will not operate or be deemed to operate as a waiver of our rights under it except to the extent of any express waiver given to you in writing. Any such waiver will not affect our ability subsequently to enforce any right arising under this agreement.
- 11.3 If either party to this agreement is prevented from performing that party's respective obligations under this agreement by circumstances beyond its reasonable control or if performance of its obligations would by reason of such circumstances give rise to a significantly increased financial cost to it, that party will not, for so long as such circumstances prevail, be required to perform such obligations. This paragraph does not apply to the obligations imposed on you by paragraph 3.

- 11.4 Any notice or other communication to be given under this agreement must be in writing and may be delivered by hand or sent by first class post or air mail or fax transmission (if to *Bonhams* marked for the attention of the Company Secretary), to the address or fax number of the relevant party given in the *Contract Form* (unless notice of any change of address is given in writing). It is the responsibility of the sender of the notice or communication to ensure that it is received in a legible form within any applicable time period.
- 11.5 If any term or any part of any term of this agreement is held to be unenforceable or invalid, such unenforceability or invalidity will not affect the enforceability and validity of the remaining terms or the remainder of the relevant term.
- 11.6 References in this agreement to *Bonhams* will, where appropriate, include reference to *Bonhams'* officers, employees and agents.
- 11.7 The headings used in this agreement are for convenience only and will not affect its interpretation.
- 11.8 In this agreement "including" means "including, without limitation".
- 11.9 References to the singular will include reference to the plural (and vice versa) and reference to any one gender will include reference to the other genders.
- 11.10 Reference to a numbered paragraph is to a paragraph of this agreement.
- 11.11 Save as expressly provided in paragraph 11.12 nothing in this agreement confers (or purports to confer) on any person who is not a party to this agreement any benefit conferred by, or the right to enforce any term of, this agreement.
- 11.12 Where this agreement confers an immunity from, and/or an exclusion or restriction of, the responsibility and/or liability of *Bonhams*, it will also operate in favour and for the benefit of *Bonhams'* holding company and the subsidiaries of such holding company and the successors and assigns of *Bonhams* and of such companies and of any officer, employee and agent of *Bonhams* and such companies, each of whom will be entitled to rely on the relevant immunity and/or exclusion and/or restriction within and for the purposes of Contracts (Rights of Third Parties) Act 1999, which enables the benefit of a contract to be extended to a person who is not a party to the contract, and generally at law.

12 GOVERNING LAW

All transactions to which this agreement applies and all connected matters will be governed by and construed in accordance with the laws of that part of the United Kingdom where the *Sale* takes (or is to take) place and we and you each submit to the exclusive jurisdiction of the courts of that part of the United Kingdom, save that we may bring proceedings against you in any other court of competent jurisdiction to the extent permitted by the laws of the relevant jurisdiction. *Bonhams* has a complaints procedure in place.

DATA PROTECTION – USE OF YOUR INFORMATION

Where we obtain any personal information about you, we shall only use it in accordance with the terms of our Privacy Policy (subject to any additional specific consent(s) you may have given at the time your information was disclosed). A copy of our Privacy Policy can be found on our *Website* www.bonhams.com or requested by post from Customer Services Department, 101 New Bond Street, London W1S 1SR, United Kingdom or by email from info@bonhams.com.

APPENDIX 3

DEFINITIONS AND GLOSSARY

Where these Definitions and Glossary are incorporated, the following words and phrases used have (unless the context otherwise requires) the meanings given to them below. The Glossary is to assist you to understand words and phrases which have a specific legal meaning with which you may not be familiar.

LIST OF DEFINITIONS

"Additional Premium" a premium, calculated in accordance with the *Notice to Bidders*, to cover *Bonhams' Expenses* relating to the payment of royalties under the Artists Resale Right Regulations 2006 which is payable by the *Buyer* to *Bonhams* on any *Lot* marked [AR] which sells for a *Hammer Price* which together with the *Buyer's Premium* (but excluding any VAT) equals or exceeds 1000 euros (converted into the currency of the *Sale* using the European Central Bank Reference rate prevailing on the date of the *Sale*).

"Auctioneer" the representative of *Bonhams* conducting the *Sale*.

"Bidder" a person who has completed a *Bidding Form*.

"Bidding Form" our Bidding Registration Form, our Absentee Bidding Form or our Telephone Bidding Form.

"Bonhams" *Bonhams* 1793 limited or its successors or assigns. *Bonhams* is also referred to in the *Buyer's Agreement*, the Conditions of Business and the *Notice to Bidders* by the words "we", "us" and "our".

"Book" a printed *Book* offered for *Sale* at a specialist *Book Sale*.

"Business" includes any trade, *Business* and profession.

"Buyer" the person to whom a *Lot* is knocked down by the *Auctioneer*. The *Buyer* is also referred to in the *Contract for Sale* and the *Buyer's Agreement* by the words "you" and "your".

"Buyer's Agreement" the contract entered into by *Bonhams* with the *Buyer* (see Appendix 2 in the *Catalogue*).

"Buyer's Premium" the sum calculated on the *Hammer Price* at the rates stated in the *Notice to Bidders*.

"Catalogue" the *Catalogue* relating to the relevant *Sale*, including any representation of the *Catalogue* published on our *Website*.

"Commission" the *Commission* payable by the *Seller* to *Bonhams* calculated at the rates stated in the *Contract Form*.

"Condition Report" a report on the physical condition of a *Lot* provided to a *Bidder* or potential *Bidder* by *Bonhams* on behalf of the *Seller*.

"Conditions of Sale" the *Notice to Bidders*, *Contract for Sale*, *Buyer's Agreement* and Definitions and Glossary.

"Consignment Fee" a fee payable to *Bonhams* by the *Seller* calculated at rates set out in the Conditions of Business.

"Consumer" a natural person who is acting for the relevant purpose outside his trade, *Business* or profession.

"Contract Form" the *Contract Form*, or vehicle *Entry* form, as applicable, signed by or on behalf of the *Seller* listing the *Lots* to be offered for *Sale* by *Bonhams*.

"Contract for Sale" the *Sale* contract entered into by the *Seller* with the *Buyer* (see Appendix 1 in the *Catalogue*).

"Contractual Description" the only *Description* of the *Lot* (being that part of the *Entry* about the *Lot* in the *Catalogue* which is in bold letters, any photograph (except for the colour) and the contents of any *Condition Report*) to which the *Seller* undertakes in the *Contract for Sale* the *Lot* corresponds.

"Description" any statement or representation in any way descriptive of the *Lot*, including any statement or representation relating to its authorship, attribution, condition, provenance, authenticity, style, period, age, suitability, quality, origin, value, estimated selling price (including the *Hammer Price*).

"Entry" a written statement in the *Catalogue* identifying the *Lot* and its *Lot* number which may contain a *Description* and illustration(s) relating to the *Lot*.

"Estimate" a statement of our opinion of the range within which the hammer is likely to fall.

"Expenses" charges and *Expenses* paid or payable by *Bonhams* in respect of the *Lot* including legal *Expenses*, banking charges and *Expenses* incurred as a result of an electronic transfer of money, charges and *Expenses* for loss and damage cover, insurance, *Catalogue* and other reproductions and illustrations, any customs duties, advertising, packing or shipping costs, reproductions rights' fees, taxes, levies, costs of testing, searches or enquiries, preparation of the *Lot* for *Sale*, storage charges, removal charges, removal charges or costs of collection from the *Seller* as the *Seller's* agents or from a defaulting *Buyer*, plus VAT if applicable.

"Forgery" an imitation intended by the maker or any other person to deceive as to authorship, attribution, origin, authenticity, style, date, age, period, provenance, culture, source or composition, which at the date of the *Sale* had a value materially less than it would have had if the *Lot* had not been such an imitation, and which is not stated to be such an imitation in any description of the *Lot*. A *Lot* will not be a *Forgery* by reason of any damage to, and/or restoration and/or modification work (including repainting or over painting) having been carried out on the *Lot*, where that damage, restoration or modification work (as the case may be) does not substantially affect the identity of the *Lot* as one conforming to the *Description* of the *Lot*.

"Guarantee" the obligation undertaken personally by *Bonhams* to the *Buyer* in respect of any *Forgery* and, in the case of specialist *Stamp Sales* and/or specialist *Book Sales*, a *Lot* made up of a *Stamp* or *Stamps* or a *Book* or *Books* as set out in the *Buyer's Agreement*.

"Hammer Price" the price in the currency in which the *Sale* is conducted at which a *Lot* is knocked down by the *Auctioneer*. **"Loss and Damage Warranty"** means the warranty described in paragraph 8.2 of the Conditions of Business.

"Loss and Damage Warranty Fee" means the fee described in paragraph 8.2.3 of the Conditions of Business.

"Lot" any item consigned to *Bonhams* with a view to its *Sale* at auction or by private treaty (and reference to any *Lot* will include, unless the context otherwise requires, reference to individual items comprised in a group of two or more items offered for *Sale* as one *Lot*).

"Motoring Catalogue Fee" a fee payable by the *Seller* to *Bonhams* in consideration of the additional work undertaken by *Bonhams* in respect of the cataloguing of motor vehicles and in respect of the promotion of *Sales* of motor vehicles.

"New Bond Street" means *Bonhams'* saleroom at 101 New Bond Street, London W1S 1SR.

"Notional Charges" the amount of *Commission* and *VAT* which would have been payable if the *Lot* had been sold at the *Notional Price*.

"Notional Fee" the sum on which the *Consignment Fee* payable to *Bonhams* by the *Seller* is based and which is calculated according to the formula set out in the Conditions of Business.

"Notional Price" the latest in time of the average of the high and low *Estimates* given by us to you or stated in the *Catalogue* or, if no such *Estimates* have been given or stated, the *Reserve* applicable to the *Lot*.

"Notice to Bidders" the notice printed at the back or front of our *Catalogues*.

"Purchase Price" the aggregate of the *Hammer Price* and *VAT* on the *Hammer Price*.

"Reserve" the minimum price at which a *Lot* may be sold (whether at auction or by private treaty).

"Sale" the auction *Sale* at which a *Lot* is to be offered for *Sale* by *Bonhams*.

"Sale Proceeds" the net amount due to the *Seller* from the *Sale* of a *Lot*, being the *Hammer Price* less the *Commission*, any *VAT* chargeable thereon, *Expenses* and any other amount due to us in whatever capacity and howsoever arising.

"Seller" the person who offers the *Lot* for *Sale* named on the *Contract Form*. Where the person so named identifies on the form another person as acting as his agent, or where the person named on the *Contract Form* acts as an agent for a principal (whether such agency is disclosed to *Bonhams* or not), *"Seller"* includes both the agent and the principal who shall be jointly and severally liable as such. The *Seller* is also referred to in the Conditions of Business by the words *"you"* and *"your"*.

"Specialist Examination" a visual examination of a *Lot* by a specialist on the *Lot*.

"Stamp" means a postage *Stamp* offered for *Sale* at a Specialist *Stamp Sale*.

"Standard Examination" a visual examination of a *Lot* by a non-specialist member of *Bonhams'* staff.

"Storage Contract" means the contract described in paragraph 8.3.3 of the Conditions of Business or paragraph 4.4 of the *Buyer's Agreement* (as appropriate).

"Storage Contractor" means the company identified as such in the *Catalogue*.

"Terrorism" means any act or threatened act of terrorism, whether any person is acting alone or on behalf of or in connection with any organisation(s) and/or government(s), committed for political, religious or ideological or similar purposes including, but not limited to, the intention to influence any government and/or put the public or any section of the public into fear.

"Trust Account" the bank account of *Bonhams* into which all sums received in respect of the *Purchase Price* of any *Lot* will be paid, such account to be a distinct and separate account to *Bonhams'* normal business bank account.

"VAT" value added tax at the prevailing rate at the date of the *Sale* in the United Kingdom.

"Website" *Bonhams Website* at www.bonhams.com

"Withdrawal Notice" the *Seller's* written notice to *Bonhams* revoking *Bonhams'* instructions to sell a *Lot*.

"Without Reserve" where there is no minimum price at which a *Lot* may be sold (whether at auction or by private treaty).

GLOSSARY

The following expressions have specific legal meanings with which you may not be familiar. The following glossary is intended to give you an understanding of those expressions but is not intended to limit their legal meanings:

"artist's resale right": the right of the creator of a work of art to receive a payment on *Sales* of that work subsequent to the original *Sale* of that work by the creator of it as set out in the Artists Resale Right Regulations 2006.

"bailee": a person to whom goods are entrusted.

"indemnity": an obligation to put the person who has the benefit of the indemnity in the same position in which he would have been, had the circumstances giving rise to the indemnity not arisen and the expression "indemnify" is construed accordingly.

"interpleader proceedings": proceedings in the Courts to determine ownership or rights over a *Lot*.

"knocked down": when a *Lot* is sold to a *Bidder*, indicated by the fall of the hammer at the *Sale*.

"lien": a right for the person who has possession of the *Lot* to retain possession of it.

"risk": the possibility that a *Lot* may be lost, damaged, destroyed, stolen, or deteriorate in condition or value.

"title": the legal and equitable right to the ownership of a *Lot*.

"tort": a legal wrong done to someone to whom the wrong doer has a duty of care.

SALE OF GOODS ACT 1979

The following is an extract from the Sale of Goods Act 1979:

"Section 12 Implied terms about title, etc

- (1) In a contract of sale, other than one to which subsection (3) below applies, there is an implied term on the part of the seller that in the case of a sale he has a right to sell the goods, and in the case of an agreement to sell he will have such a right at the time when the property is to pass.
- (2) In a contract of sale, other than one to which subsection (3) below applies, there is also an implied term that-
 - (a) the goods are free, and will remain free until the time when the property is to pass, from any charge or encumbrance not disclosed or known to the buyer before the contract is made, and
 - (b) the buyer will enjoy quiet possession of the goods except in so far as it may be disturbed by the owner or other person entitled to the benefit of any charge or encumbrance so disclosed or known.

- (3) This subsection applies to a contract of sale in the case of which there appears from the contract or is to be inferred from its circumstances an intention that the seller should transfer only such title as he or a third person may have.
- (4) In a contract to which subsection (3) above applies there is an implied term that all charges or encumbrances known to the seller and not known to the buyer have been disclosed to the buyer before the contract is made.
- (5) In a contract to which subsection (3) above applies there is also an implied term that none of the following will disturb the buyer's quiet possession of the goods, namely:
 - (a) the seller;
 - (b) in a case where the parties to the contract intend that the seller should transfer only such title as a third person may have, that person;
 - (c) anyone claiming through or under the seller or that third person otherwise than under a charge or encumbrance disclosed or known to the buyer before the contract is made.
- (5A) As regards England and Wales and Northern Ireland, the term implied by subsection (1) above is a condition and the terms implied by subsections (2), (4) and (5) above are warranties."

UNITED KINGDOM

London
101 New Bond Street ●
London W1S 1SR
+44 20 7447 7447
+44 20 7447 7400 fax

Montpelier Street ●
London SW7 1HH
+44 20 7393 3900
+44 20 7393 3905 fax

South East England

Brighton & Hove
19 Palmeira Square
Hove, East Sussex
BN3 2JN
+44 1273 220 000
+44 1273 220 335 fax

Guildford
Millmead,
Guildford,
Surrey GU2 4BE
+44 1483 504 030
+44 1483 450 205 fax

Tunbridge Wells
Ground Floor
Royal Victoria House
51-55 The Pantiles
Tunbridge Wells, Kent
TN2 5TE
+44 1892 546 818
+44 1892 518 077 fax

Isle of Wight
+44 1983 282 228

Representative:
West Sussex
Jeff Burfield
+44 1243 787 548

South West England

Bath
Queen Square House
Charlotte Street
Bath BA1 2LL
+44 1225 788 988
+44 1225 446 675 fax

Cornwall – Par
Cornubia Hall
Eastcliffe Road
Par, Cornwall
PL24 2AQ
+44 1726 814 047
+44 1726 817 979 fax

Exeter
The Lodge
Southernhay West Exeter,
Devon
EX1 1JG
+44 1392 425 264
+44 1392 494 561 fax

Winchester
The Red House
Hyde Street
Winchester
Hants SO23 7DX
+44 1962 862 515
+44 1962 865 166 fax

Tetbury
22a Long Street
Tetbury
Gloucestershire
GL8 8AQ
+44 1666 502 200
+44 1666 505 107 fax

Representatives:
Dorset
Bill Allan
+44 1935 815 271

East Anglia

Bury St. Edmunds
21 Churchgate Street
Bury St Edmunds
Suffolk IP33 1RG
+44 1284 716 190
+44 1284 755 844 fax

Norfolk
The Market Place
Reepham
Norfolk NR10 4JJ
+44 1603 871 443
+44 1603 872 973 fax

Midlands

Knowle
The Old House
Station Road
Knowle, Solihull
West Midlands
B93 0HT
+44 1564 776 151
+44 1564 778 069 fax

Oxford ●
Banbury Road
Shipton on Cherwell
Kidlington OX5 1JH
+44 1865 853 640
+44 1865 372 722 fax

Henley
The Coach House
66 Northfield End
Henley on Thames
Oxon RG9 2JN
+44 1491 413 636
+44 1491 413 637 fax

Yorkshire & North East England

Leeds
30 Park Square West
Leeds LS1 2PF
+44 113 234 5755
+44 113 244 3910 fax

North West England

Chester ●
New House
150 Christleton Road
Chester, Cheshire
CH3 5TD
+44 1244 313 936
+44 1244 340 028 fax

Carlisle
48 Cecil Street
Carlisle, Cumbria
CA1 1NT
+44 1228 542 422
+44 1228 590 106 fax

Manchester
The Stables
213 Ashley Road
Hale WA15 9TB
+44 161 927 3822
+44 161 927 3824 fax

Southport
33 Botanic Road
Churchtown
Southport
Merseyside PR9 7NE
+44 1704 507 875
+44 1704 507 877 fax

Representative:
Isle of Man
Felicity Loughran
+44 1624 822 875

Channel Islands

Jersey
39 Don Street
St.Helier
JE2 4TR
+44 1534 722 441
+44 1534 759 354 fax

Representative:
Guernsey
+44 1481 722 448

Scotland

Edinburgh ●
22 Queen Street
Edinburgh
EH2 1JX
+44 131 225 2266
+44 131 220 2547 fax

Glasgow
176 St. Vincent Street,
Glasgow
G2 5SG
+44 141 223 8866
+44 141 223 8868 fax

Representatives:
Wine & Spirits
Tom Gilbey
+44 1382 330 256

Wales

Cardiff
7-8 Park Place,
Cardiff CF10 3DP
+44 2920 727 980
+44 2920 727 989 fax

EUROPE

Austria - Vienna
Garnisongasse 4
1090 Vienna
+43 (0)1 403 00 01
vienna@bonhams.com

Belgium - Brussels
Boulevard
Saint-Michel 101
1040 Brussels
+32 (0)2 736 5076
+32 (0)2 732 5501 fax
belgium@bonhams.com

France - Paris
4 rue de la Paix
75002 Paris
+33 (0)1 42 61 1010
+33 (0)1 42 61 1015 fax
paris@bonhams.com

Germany - Cologne
Albertusstrasse 26
50667 Cologne
+49 (0)221 2779 9650
+49 (0)221 2779 9652 fax
cologne@bonhams.com

Germany - Munich
Maximilianstrasse 52
80538 Munich
+49 (0) 89 2420 5812
+49 (0) 89 2420 7523 fax
munich@bonhams.com

Ireland - Dublin
31 Molesworth Street
Dublin 2
+353 (0)1 602 0990
+353 (0)1 4004 140 fax
ireland@bonhams.com

Italy - Milan
Via Boccaccio 22
20123 Milano
+39 (0)2 4953 9020
+39 (0)2 4953 9021 fax
milan@bonhams.com

Italy - Rome
Via Sicilia 50
00187 Rome
+39 (0)6 48 5900
+39 (0)6 482 0479 fax
rome@bonhams.com

Netherlands - Amsterdam
de Lairessestraat 123
1075 HH Amsterdam
+31 20 67 09 701
+31 20 67 09 702 fax
amsterdam@bonhams.com

Spain - Madrid
Nuñez de Balboa no.4 - 1A
Madrid
28001
+34 91 578 17 27
madrid@bonhams.com

Switzerland - Geneva
Rue Etienne-Dumont 10
1204 Geneva
Switzerland
+41 76 379 9230
geneva@bonhams.com

Representatives:
Greece
Art Expertise
+30 210 3636 404

Marbella
James Roberts
+34 952 90 62 50
marbella@bonhams.com

Portugal
Filipa Rebelo de Andrade
+351 91 921 4778
filipa.deandrade@bonhams.com

Russia
Marina Jacobson
+7 921 555 2302
russia@bonhams.com

NORTH AMERICA

USA

San Francisco ●
220 San Bruno Avenue
San Francisco
CA 94103
+1 (415) 861 7500
+1 (415) 861 8951 fax

Los Angeles ●
7601 W. Sunset Boulevard
Los Angeles
CA 90046
+1 (323) 850 7500
+1 (323) 850 6090 fax

New York ●
580 Madison Avenue
New York, NY
10022
+1 (212) 644 9001
+1 (212) 644 9007 fax

Representatives:
Arizona
Terri Adrian-Hardy
+1 (480) 994 5362

California
Central Valley
David Daniel
+1 (916) 364 1645

District of Columbia/ Mid-Atlantic
Martin Gammon
+1 (202) 333 1696

Southern California
Christine Eisenberg
+1 (949) 646 6560

Florida
+1 (305) 228 6600

Georgia
Mary Moore Bethea
+1 (404) 842 1500

Illinois
Ricki Blumberg Harris
+1 (312) 475 3922
+1 (773) 267 3300

Massachusetts
Boston/New England
Amy Corcoran
+1 (617) 742 0909

Nevada
David Daniel
+1 (775) 831 0330

New Mexico
Leslie Trilling
+1 (505) 820 0701

Oregon
Sheryl Acheson
+1(503) 312 6023

Texas
Amy Lawch
+1 (713) 621 5988

Washington
Heather O'Mahony
+1 (206) 218 5011

CANADA

Toronto, Ontario ●
Jack Kerr-Wilson
20 Hazelton Avenue
Toronto, ONT
M5R 2E2
+1 (416) 462 9004
info.ca@bonhams.com

Montreal, Quebec
David Kelsey
+1 (514) 341 9238
info.ca@bonhams.com

SOUTH AMERICA

Argentina
Daniel Claramunt
+54 11 479 37600

Brazil
Thomaz Oscar Saavedra
+55 11 3031 4444
+55 11 3031 4444 fax

ASIA

Hong Kong
Carson Chan
Suite 1122
Two Pacific Place
88 Queensway
Admiralty
Hong Kong
+852 2918 4321
+852 2918 4320 fax

Beijing
Xibo Wang
Room A515
F/5 CBD International Mansion
No. 16 Yongan Dongli
Chaoyang District
Beijing 100022
+852 3607 0023
+852 2918 4320 fax

Japan
Hiromi Ono
Level 14 Hibiya Central Building
1-2-9 Nishi-Shimbashi
Minato-ku
Tokyo 105-0003
+81 (0) 3 5532 8636
+81 (0) 3 5532 8637 fax
tokyo@bonhams.com

Taiwan
+886 2 8758 2898

AUSTRALIA

Sydney
76 Paddington Street
Paddington NSW 2021
Australia
+61 (0) 2 8412 2222
+61 (0) 2 9475 4110 fax
info.aus@bonhams.com

Melbourne
Ormond Hall
557 St Kilda Rd
Melbourne VIC 3004
+61 (0) 3 8640 4088

Representatives:
Perth
Norah Ohrt
+61 (0) 8 9433 4414

Adelaide
James Bruce
+61 (0) 8 8232 2860

AFRICA

South Africa - Johannesburg
Penny Culverwell
+27 (0)71 342 2670
pennyculverwel@bonhams.com

Bonhams Specialist Departments

To e-mail any of the below use the first name dot second name @bonhams.com eg. charles.obrien@bonhams.com

19th Century Paintings

UK
Charles O' Brien
+44 20 7468 8360
U.S.A
Madalina Lazen
+1 212 644 9108

20th Century British Art

Matthew Bradbury
+44 20 7468 8295

Aboriginal Art

Greer Adams
+61 2 8412 2222

African and Oceanic Art

UK
Philip Keith
+44 2920 727 980
U.S.A
Fred Baklar
+1 323 436 5416

American Paintings

Alan Fausel
+1 212 644 9039

Antiquities

Madeleine Perridge
+44 20 7468 8226

Antique Arms & Armour

UK
David Williams
+44 20 7393 3807
U.S.A
Paul Carella
+1 415 503 3360

Art Collections, Estates & Valuations

Harvey Cammell
+44 (0) 207 468 8340

Art Nouveau & Decorative Art & Design

UK
Mark Oliver
+44 20 7393 3856
U.S.A
Frank Maraschiello
+1 212 644 9059

Australian Art

Litsa Veldekis
+61 2 8412 2222

Australian Colonial Furniture and Australiana

James Hendy
+61 2 8412 2222

Books, Maps & Manuscripts

UK
David Park
+44 20 7393 3817
U.S.A
Christina Geiger
+1 212 644 9094

British & European Glass

UK
Simon Cottle
+44 20 7468 8383
U.S.A.
Suzy Pai
+1 415 503 3343

British & European Porcelain & Pottery

UK
John Sandon
+44 20 7468 8244
U.S.A
Peter Scott
+1 415 503 3326

Contemporary Art

U.S.A
Jeremy Goldsmith
+1 212 644 9656

California & American Paintings

Scot Levitt
+1 323 436 5425

Carpets

UK
Mark Dance
+44 8700 27361
U.S.A.
Hadji Rahimpour
+1 415 503 3392

Chinese & Asian Art

UK
Asaph Hyman
+44 20 7468 5888
U.S.A
Dessa Goddard
+1 415 503 3333
HONG KONG
Julian King
+852 2918 4321

Clocks

UK
James Stratton
+44 20 7468 8364
U.S.A
Jonathan Snellenburg
+1 212 461 6530

Coins & Medals

UK
John Millensted
+44 20 7393 3914
U.S.A
Paul Song
+1 323 436 5455

Contemporary Art & Modern Design

UK
Gareth Williams
+44 20 7468 5834
U.S.A
Sharon Goodman Squires
+1 212 644 9128

Costume & Textiles

Claire Browne
+44 1564 732969

Entertainment Memorabilia

UK
Stephanie Connell
+44 20 7393 3844
U.S.A
Catherine Williamson
+1 323 436 5442

Ethnographic Art

Jim Haas
+1 415 503 3294

Football Sporting Memorabilia

Dan Davies
+44 1244 353118

Furniture & Works of Art

UK
Fergus Lyons
+44 20 7468 8221
U.S.A
Jeffrey Smith
+1 415 503 3413

Greek Art

Olympia Pappa
+44 20 7468 8314

Golf Sporting Memorabilia

Kevin Mcgimpsey
+44 1244 353123

Irish Art

Penny Day
+44 20 7468 8366

Impressionist & Modern Art

Deborah Allan
+44 20 7468 8276

Islamic & Indian Art

Alice Bailey
+44 20 7468 8268

Japanese Art

UK
Suzannah Yip
+44 20 7468 8368
U.S.A
Jeff Olson
+1 212 461 6516

Jewellery

UK
Jean Ghika
+44 20 7468 8282
U.S.A
Susan Abeles
+1 212 461 6525
AUSTRALIA
Patti Sedgwick
+61 2 8412 2222

Marine Art

UK
Alistair Laird
+44 20 7468 8211
U.S.A
Gregg Dietrich
+1 917 206 1697

Mechanical Music

Laurence Fisher
+44 20 7393 3984

Modern, Contemporary & Latin American Art

U.S.A
Sharon Goodman Squires
+1 212 644 9128

Motor Cars

UK
Tim Schofield
+44 20 7468 5804
USA
Mark Osborne
+1 415 503 3353
EUROPE
Philip Kantor
+32 476 879 471
AUSTRALIA
Damien Duigan
+61 2 8412 2232
Automobilia
UK
Toby Wilson
+44 8700 273 619
USA
Kurt Forry
+1 415 391 4000

Motorcycles

Ben Walker
+44 8700 273616
Automobilia
Adrian Pipiros
+44 8700 273621

Musical Instruments

Philip Scott
+44 20 7393 3855

Natural History

U.S.A
Claudia Florian
+1 323 436 5437

Old Master Pictures

UK
Andrew Mckenzie
+44 20 7468 8261
U.S.A
Mark Fisher
+1 323 436 5488

Orientalist Art

Charles O'Brien
+44 20 7468 8360

Photography

U.S.A
Judith Eurich
+1 415 503 3259

Portrait Miniatures

Camilla Lombardi
+44 20 7393 3985

Prints

UK
Robert Kennan
+44 20 7468 8212
U.S.A
Judith Eurich
+1 415 503 3259

Russian Art

UK
Sophie Hamilton
+44 20 7468 8334
U.S.A
Yelena Harbick
+1 212 644 9136

Scientific Instruments

Jon Baddeley
+44 20 7393 3872
U.S.A.
Jonathan Snellenburg
+1 212 461 6530

Scottish Pictures

Chris Brickley
+44 131 240 2297

Silver & Gold Boxes

UK
Michael Moorcroft
+44 20 7468 8241
U.S.A
Aileen Ward
+1 800 223 5463

South African Art

Giles Peppiatt
+44 20 7468 8355

Sporting Guns

Patrick Hawes
+44 20 7393 3815

Toys, Dolls & Chess

Leigh Gotch
+44 20 8963 2839

Travel Pictures

Veronique Scorer
+44 20 7393 3960

Urban Art

Gareth Williams
+44 20 7468 5879

Watches & Wristwatches

UK
Paul Maudsley
+44 20 7447 7412
U.S.A.
Jonathan Snellenburg
+1 212 461 6530
HONG KONG
Carson Chan
+852 2918 4321

Whisky

UK
Martin Green
+44 1292 520000
U.S.A
Joseph Hyman
+1 917 206 1661
HONG KONG
Daniel Lam
+852 3607 0004

Wine

UK
Richard Harvey
+44 (0) 8700 273622
U.S.A
Doug Davidson
+1 415 503 3363
HONG KONG
Daniel Lam
+852 3607 0004

Registration and Bidding Form

(Attendee / Absentee / Online / Telephone Bidding)

Please circle your bidding method above.

<input type="checkbox"/>	<input type="checkbox"/>	<input type="checkbox"/>	<input type="checkbox"/>
--------------------------	--------------------------	--------------------------	--------------------------

Paddle number (for office use only)

This sale will be conducted in accordance with Bonhams' Conditions of Sale and bidding and buying at the Sale will be regulated by these Conditions. You should read the Conditions in conjunction with the Sale Information relating to this Sale which sets out the charges payable by you on the purchases you make and other terms relating to bidding and buying at the Sale. You should ask any questions you have about the Conditions before signing this form. These Conditions also contain certain undertakings by bidders and buyers and limit Bonhams' liability to bidders and buyers.

Data protection – use of your information

Where we obtain any personal information about you, we shall only use it in accordance with the terms of our Privacy Policy (subject to any additional specific consent(s) you may have given at the time your information was disclosed). A copy of our Privacy Policy can be found on our website (www.bonhams.com) or requested by post from Customer Services Department, 101 New Bond Street, London W1S 1SR United Kingdom or by e-mail from info@bonhams.com.

Credit and Debit Card Payments

There is no surcharge for payments made by debit cards issued by a UK bank. All other debit cards and all credit cards are subject to a 3% surcharge on the total invoice price.

Notice to Bidders.

Clients are requested to provide photographic proof of ID - passport, driving licence, ID card, together with proof of address - utility bill, bank or credit card statement etc. Corporate clients should also provide a copy of their articles of association / company registration documents, together with a letter authorising the individual to bid on the company's behalf. Failure to provide this may result in your bids not being processed. For higher value lots you may also be asked to provide a bank reference.

If successful

I will collect the purchases myself ☐

Please contact me with a shipping quote (if applicable) ☐

Sale title: British & European Ceramics, Glass & Asian Art		Sale date: 16 January 2013	
Sale no. 20673		Sale venue: Oxford	
If you are not attending the sale in person, please provide details of the Lots on which you wish to bid at least 24 hours prior to the sale. Bids will be rounded down to the nearest increment. Please refer to the Notice to Bidders in the catalogue for further information relating to Bonhams executing telephone, online or absentee bids on your behalf. Bonhams will endeavour to execute these bids on your behalf but will not be liable for any errors or failing to execute bids.			
General Bid Increments:			
£10 - 200by 10s		£10,000 - 20,000by 1,000s	
£200 - 500by 20 / 50 / 80s		£20,000 - 50,000by 2,000 / 5,000 / 8,000s	
£500 - 1,000by 50s		£50,000 - 100,000by 5,000s	
£1,000 - 2,000by 100s		£100,000 - 200,000by 10,000s	
£2,000 - 5,000by 200 / 500 / 800s		above £200,000at the auctioneer's discretion	
£5,000 - 10,000by 500s			
The auctioneer has discretion to split any bid at any time.			
Customer Number		Title	
First Name		Last Name	
Company name (to be invoiced if applicable)			
Address			
City		County / State	
Post / Zip code		Country	
Telephone mobile		Telephone daytime	
Telephone evening		Fax	
Preferred number(s) in order for Telephone Bidding (inc. country code)			
E-mail (in capitals) <input type="text"/>			
<input type="text"/>			
I am registering to bid as a private client <input type="checkbox"/>		I am registering to bid as a trade client <input type="checkbox"/>	
If registered for VAT in the EU please enter your registration here:		Please tick if you have registered with us before <input type="checkbox"/>	
<input type="text"/> / <input type="text"/> - <input type="text"/> - <input type="text"/>			

Please note that all telephone calls are recorded.

Telephone or Absentee (T / A)	Lot no.	Brief description	MAX bid in GBP (excluding premium & VAT)	Covering bid*

FOR WINE SALES ONLY

Please leave lots "available under bond" in bond ☐ I will collect from Park Royal or bonded warehouse ☐ Please include delivery charges (minimum charge of £20 + VAT) ☐

BY SIGNING THIS FORM YOU AGREE THAT YOU HAVE READ AND UNDERSTAND OUR CONDITIONS OF SALE AND WISH TO BE BOUND BY THEM. THIS AFFECTS YOUR LEGAL RIGHTS.

Your signature:

Date:

* Covering Bid: A maximum bid (exclusive of Buyers Premium and VAT) to be executed by Bonhams only if we are unable to contact you by telephone, or should the connection be lost during bidding.

NB. Payment will only be accepted from an account in the same name as shown on the invoice and Auction Registration form.

Please email or fax the completed Auction Registration form and requested information to:

Bonhams, Customer Services, 101 New Bond Street, London, W1S 1SR. Tel: +44 (0) 20 7447 7447 Fax: +44 (0) 20 7447 7401, bids@bonhams.com

Bonhams 1793 Limited. Montpelier Street, London SW7 1HH. Incorporated in England. Company Number 4326560.

UK/08/12

Bonhams

1793



EB 1793

Bonhams

Banbury Road,
Shipton on Cherwell,
Kidlington
Oxford OX5 1JH
+44 (0) 1865 853 640
+44 (0) 1865 372 722 fax

