

Bonhams



**The Antiquities sale,
de Louxor à Rome, voyage d'un passionné**

Paris | Jeudi 7 Octobre 2021 à 2pm







The Antiquities sale, de Louxor à Rome, voyage d'un passionné

Paris | Jeudi 7 Octobre 2021 à 2pm

COMMISSAIRE-PRISEUR HABILITE

Catherine Yaiche

BONHAMS FRANCE SAS N° AGRÉMENT 2007-638

4 rue de La Paix
75002 PARIS
+33 (0)1 42 61 10 10
+33 (0)1 42 61 10 15 fax

NUMERO DE LA VENTE

27296
Lots 1 - 132

ILLUSTRATIONS

Couverture Avant: lot 14
Couverture Arrière: lot 100
Couverture avant intérieure: lot 130
Couverture arrière intérieure: lot 74

EXPOSITIONS PUBLIQUES

Paris

4 rue de La Paix
Paris, 75002

Lundi 4 octobre, 10h00-18h00
Mardi 5 octobre, 10h00-18h00
Mercredi 6 octobre, 10h00-18h00
Jeudi 7 octobre, sur rendez-vous

AVIS IMPORTANT SUR COVID

Bonhams continue d'organiser des expositions et des ventes conformément aux directives gouvernementales dans chaque région. Si des restrictions locales empêchent l'ouverture de nos salles de vente, les ventes seront soit entièrement en ligne, soit diffusées en direct depuis la maison de ventes. Les offres seront acceptées en ligne, par téléphone et par ordre. Pour toute information et si vous avez des questions concernant une vente à venir, veuillez contacter le service client

INFORMATIONS PENDANT LA VENTE

Pour toutes demandes de rapports de condition ainsi que demandes de provenances veuillez-vous adresser à l'équipe d'antiquité de Londres.

Londres

Francesca Hickin
+44 (0) 20 7468 8226
francesca.hickin@bonhams.com

Siobhan Quin

+44 (0) 20 7468 8225
siobhan.quin@bonhams.com

Anna Marston

+44 (0) 20 7468 8332
anna.marston@bonhams.com

Consultant Senior

Joanna van der Lande

Paris

Alice Pogam
+33 (0) 1 42 61 10 10
alice.pogam@bonhams.com

FRAIS D'ADJUDICATION

En sus du prix d'adjudication, l'acheteur devra payer sur le prix d'adjudication de chaque lot des frais de vente.

Veuillez consulter les « *informations importantes aux acheteurs* ».

Ces frais de vente s'appliquent à chaque lot et sont soumis à la TVA. Certains lots sont sujets à la TVA sur le prix d'adjudication en plus de la TVA sur les frais de vente. Ces lots sont marqués d'une étoile (*) à côté du numéro de passage en cas d'importation temporaire ou d'une dague (†) en cas de mise en vente du lot par un assujetti. Ces symboles seront imprimés à côté du numéro du lot correspondant dans le catalogue.

IMPORTANT

La vente est soumise aux conditions générales imprimées à la fin du catalogue. Nous conseillons aux enchérisseurs potentiels de prendre connaissance des « *informations importantes aux acheteurs* » ainsi que de la partie douanes, transport et gardiennage figurant en fin de catalogue.

ENCHÈRES

- Enchérir en ligne/APP

Inscrivez-vous pour enchérir en ligne en visitant

www.bonhams.com/27296



Enchérissez via l'application.
Téléchargez maintenant
pour Android et IOS

- Enchérissez via telephone/ en absence

d'inscription et d'enchère et le soumettre par email a bids@bonhams.com

Le formulaire se trouve au dos de chaque catalogue et sur notre site Web à l'adresse www.bonhams.com

Veuillez noter que nous ne pouvons pas garantir les offres dans les 24 heures suivant la vente.

Les enchères par téléphone ne seront acceptées que sur un lot avec une estimation basse supérieure à 1000 euro.

- Enchérir en personne

Vous pouvez vous pré-inscrire en ligne sur Bonhams.com ou obtenir un paddle à notre bureau d'inscription.

- Nouveaux enchérisseurs

Vous devez fournir une preuve d'identité lors de la soumission de vos enchères. Une copie d'une pièce d'identité avec photo émise par le gouvernement (permis de conduire ou passeport) indiquant votre nom complet et votre date de naissance et, si elle n'apparaît pas sur la pièce d'identité, une preuve de votre adresse actuelle (facture de services publics ou relevé bancaire).

Pour le compte d'entreprise ou d'autres entités, veuillez nous contacter en ce qui concerne les documents que vous devrez fournir.

Le non-respect de cette consigne peut entraîner l'annulation de vos enchères.

Pour toutes autres demandes, contactez notre service client au: +33 (0)1 42 61 10 10 or bids@bonhams.com

Informations sur la Vente

ENCHÈRES

+33 (0)1 42 61 10 10
Pour enchérir par internet veuillez visiter www.bonhams.com

PAIEMENTS

Acheteurs
+33 (0)1 42 61 10 10

Vendeurs
+33 (0)1 42 61 10 10

TRANSPORT

Pour toute information ou estimation concernant les transports nationaux et internationaux ainsi que les licences d'exportation, contactez Bonhams Paris au +33 (0)1 42 61 10 10 ou transport@bonhams.com

ASSURANCE APRÈS LA VENTE

Dès l'adjudication, tous les risques afférant au lot seront transférés à l'acheteur dans leur intégralité et sans la moindre réserve. A charge pour l'acheteur de faire assurer ses achats. Bonhams décline toute responsabilité quant aux dommages que l'achat pourrait encourir, dès l'adjudication prononcé.

RÉCUPÉRATION ET STOCKAGE DES ŒUVRES APRÈS LA VENTE

Tout les lots de la vente seront transférés chez ESI Fine Art, 2 rue de l'industrie, 93200, Saint Denis vendredi 8 Octobre et seront disponible à partir du mardi 12 octobre à 12h00. Le retrait pourra s'effectuer UNIQUEMENT sur rendez-vous dont la demande par e-mail aura été faite au MINIMUM 24h à l'avance. Adresse mail: transport@bonhams.com

Une pièce d'identité nationale sera demandée. Si un tiers collecte le lot à votre place, sa pièce d'identité ainsi qu'une autorisation écrite de votre part lui seront également demandées.

Veuillez noter que certains lots nécessitent un certificat d'exportation de bien culturel et une licence d'exportation. Veuillez contacter Kimly Ek pour tout renseignement kimly.ek@bonhams.com

Symbols

Y Soumis aux réglementations de la CITES lors de l'exportation de ces articles en dehors de l'UE.

Φ Ce Lot contient ou est fait d'ivoire. Le gouvernement américain a interdit l'importation d'ivoire aux États-Unis.

COÛTS DE STOCKAGE

Stockage

Le stockage sera gratuit pour les premiers 14 jours suivant la vente. Les frais de stockage seront a payer a partir du vendredi 22 Octobre 2021.

Coûts de stockage

Chaque lot: 5 euro par jour +TVA.

TVA

Les symboles suivants, figurant à côté du numéro de Lot, indiquent que la TVA est due sur le Prix d'adjudication et la Commission d'achat :

† TVA au taux en vigueur sur le Prix d'adjudication et la Commission d'achat

* TVA sur les articles importés à un taux préférentiel de 5.5 % sur le Prix d'adjudication et au taux en vigueur sur la Commission d'achat

The Antiquities sale, de Louxor à Rome, voyage d'un passionné

Paris | Thursday, 7 October 2021 at 2pm

AUCTIONEER

Catherine Yaiche

BONHAMS FRANCE SAS N° AGRÉMENT 2007-638

4 Rue de La Paix
75002 PARIS
+33 (0)1 42 61 10 10
+33 (0)1 42 61 10 15 fax

SALE NUMBER

27187
Lots 1 - 132

ILLUSTRATIONS

Front Cover: lot 14
Back Cover: lot 100
Inside Front Cover: lot 130
Inside Back Cover: lot 74

VIEWING

Paris

4 Rue de La Paix
Paris, 75002

Monday 4 October, 10am-6pm
Tuesday 5 October, 10am-6pm
Wednesday 6 October, 10am-6pm
Thursday 7 October,
by appointment only

IMPORTANT NOTICE ABOUT COVID

Bonhams continues to hold viewings and sales in accordance to the government guidelines in each region. If local restrictions prevent our salerooms from opening, the sales will either be wholly online or livestreamed from the auction house. Bids will be accepted online, on the Bonhams app, on the telephone and as absentee bids. For up to date information and if you have any questions regarding an upcoming sale please contact Client Services on: +44 (0)20 7447 7447 or info@bonhams.com

ENQUIRIES

For all condition reports and provenance enquiries please contact our London Antiquities team.

London

Francesca Hickin
+44 (0) 20 7468 8226
francesca.hickin@bonhams.com

Siobhan Quin

+44 (0) 20 7468 8225
siobhan.quin@bonhams.com

Anna Marston

+44 (0) 20 7468 8332
anna.marston@bonhams.com

Consultant Senior

Joanna van der Lande

Paris

Alice Pogam
+33 (0) 1 42 61 10 10
alice.pogam@bonhams.com

BUYER'S PREMIUM (NOTICE TO BUYERS)

Bonhams charge a buyer's premium. Please see "Important Information for Buyers".

This applies to each lot purchased and is subject to TVA. Some lots may be subject to TVA on the hammer price as well as the premium. These lots will be marked with an star sign (*) in relation to temporary imported items or a dagger sign (†) in relation to TVA charged by a business. Such signs will be printed beside the relevant lot number in the catalogue.

IMPORTANT

The sale is conducted according to the general conditions printed at the back of this catalogue. We advise potential bidders to familiarise themselves with the "Important Information for Buyers" regarding customs, transport and storage.

BIDS

- Bid online/APP

Register to bid online by visiting www.bonhams.com/27296



Bid through the app. Download now for android and iOS

- Bid by telephone/absentee

We require a completed Bidder Registration Form returned by email to bids@bonhams.com.

The form can be found at the back of every catalogue and on our website at www.bonhams.com

Please note we cannot guarantee bids within 24 hours of the sale.

Bidding by telephone will only be accepted on a lot with a lower estimate in excess of £1,000.

- Bid in person

You can pre-register online at Bonhams.com or obtain a paddle at our Registration Desk.

- New Bidders

You must provide proof of identity when submitting bids. A copy of a government- issued photo identification (driving licence or passport) showing your full name and date of birth, and, if not shown on the ID document, proof of your current address (utility bill or bank statement).

For company account or other entities, please contact us in relation to the documents you will need to provide.

Failure to do this may result in your bids not being processed.

For all other enquiries, contact our Client Services department on: +44 (0) 207 447 7447 or bids@bonhams.com

Sale Information

BIDS

+33 (0)1 42 61 10 10
To bid via the internet please visit
www.bonhams.com

PAYMENTS

Buyers
+33 (0)1 42 61 10 10

Sellers

Payment of sale proceeds
+33 (0)1 42 61 10 10

SHIPPING

For information and estimates on domestic and international shipping as well as export licenses please contact Bonhams Paris at +33 (0)1 42 61 10 10 or transport@bonhams.com

INSURANCE AFTER THE SALE

Buyers are reminded that their purchases are their responsibility from the fall of the auction hammer. It is your responsibility to have adequate insurance cover in place. Neither Bonhams, nor their agents will be liable for any damage or loss that the Lot may suffer from the fall of the auction hammer.

BUYERS COLLECTION & STORAGE AFTER SALE

All lots will be removed to ESI Fine Art, 2 rue de l'industrie, Saint Denis, 93200, on Friday 8 October and will be available for collection from 12pm Tuesday 12 October by appointment only. Please email transport@bonhams.com at least 24 hours in advance to book in a collection.

Photographic ID will be required at time of collection. If a third party is collecting for you written authorisation is required in advance from you and photographic ID of the third party is requested at the time of collection.

Please note that certain items require French passports for export out of France. Please contact Kimly Ek by email for further details. kimly.ek@bonhams.com

Symbols

Y Subject to CITES regulations when exporting these items outside the EU

Φ This lot contains or is made of ivory. The United States Government has banned the import of ivory into the USA.

STORAGE AND HANDLING CHARGES

Storage Charges

Storage will be free of charge for 14 days following the auction. Storage charges will begin on Friday 22 October.

Each lot: 5 euros per day +TVA (please note that charges apply every day including weekend and public holidays)

VAT

The following symbols are used to denote that VAT is due on the hammer price and buyer's premium.

† VAT 20% on hammer price and buyer's premium

* VAT on imported items at a preferential rate of 5% on hammer price and the prevailing rate on buyer's premium

Avis important à tous les acheteurs

Etat

L'état du lot n'est pas mentionné dans le catalogue.

L'absence d'une telle mention n'implique pas que le lot soit en bon état ou exempt de défauts.

Les acheteurs potentiels doivent s'assurer eux-mêmes de l'état de chaque lot suite à une inspection.

Des rapports d'état peuvent être fournis sur demande, mais ils ne sont donnés qu'à titre indicatif et sont nécessairement subjectifs.

Dans la mesure du possible, veuillez prévoir un délai de 24h avant de recevoir les rapports demandés.

Provenance

Pour de plus amples informations sur la provenance de chaque lot, veuillez contacter Le département Antiquités à Londres.

Licences d'exportation et Cites

Certains lots nécessitent des licences d'exportation ou Cites pour quitter la France ou l'Europe.

Veuillez-vous référer aux notices en salle « Saleroom Notices » ou contacter Bonhams Paris pour tout renseignement ou conseil à ce sujet.

Expédition

Veuillez noter que les lots d'origine iranienne et perse sont soumis à des restrictions commerciales américaines, qui interdisent actuellement leur importation aux États-Unis, sans aucune dérogation.

Des restrictions similaires peuvent s'appliquer à d'autres lots.

Veuillez contacter le département Antiquités à Londres pour de plus amples informations.

Il est de la responsabilité de l'acheteur de s'assurer eux-mêmes que le lot acheté peut être importé dans le pays de destination.

Important Notice To All Buyers

Condition

Condition is not stated in the catalogue. The absence of such reference does not imply that the lot is in good condition or free from faults.

Prospective buyers should satisfy themselves by inspection as to the condition of each lot. Condition reports can be provided on request, but are for general guidance only and such reports are of necessity, subjective. Wherever possible please allow at least 24 hours for reports to be compiled.

Provenance

For further information on the **provenance** of each lot contact the Antiquities Department in London.

Export and Cites Licences

Some lots will require export or cites licences in order to leave France or Europe, please refer to the Saleroom Notices or contact the Paris office for guidance.

Shipping

Please note that lots of Iranian and Persian origin are subject to US trade restrictions which currently prohibit their import into the United States, with no exemptions. Similar restrictions may apply to other lots. Please contact the Antiquities Department for further information. It is the buyer's responsibility to satisfy themselves that the lot being purchased may be imported into the country of destination.



Lot 101

Art Grec et Romaine



1
ARYBALLE PLASTIQUE EN FORME DE HÉRISSON ET UN ARYBALLE, FAÏENCE SILICEUSE, RHODIENNE, CIRCA VIE S. AV. J.-C.

A RHODIAN FAÏENCE HEDGEHOG ARYBALLOS AND A RHODIAN FAÏENCE ARYBALLOS, CIRCA 6TH CENTURY B.C., the hedgehog with spines incised, with pointed snout, black slip disk eyes and broad ears, the aryballos with cross-hatched body, and black glazed petals radiating around the shoulder, with lotus flower base, *hedgehog*: 6.5cm high, 4.5cm wide, 7cm deep; *aryballos*: 5.2cm high, 4.5cm diam. (2)

€1,500 - 2,000
£1,300 - 1,700
US\$1,800 - 2,400

Provenance:

Acquired from La Reine Margot, Paris.



2
GRAND GUTTUS, TERRE CUITE VERNISSÉE NOIR, MAGNA GRECIA, CIRCA IVE - IIIE S. AV. J.-C.

A LARGE SOUTH ITALIAN BLACK GLAZED GUTTUS, CIRCA LATE 4TH-EARLY 3RD CENTURY B.C., the discus moulded with the head of Minerva, wearing a winged helmet, 14cm high, 17cm wide, 18cm deep

€800 - 1,200
£690 - 1,000
US\$950 - 1,400

Provenance:

Private collection, the Boulonnais, acquired in the 1980s.
Entière collection de Monsieur B. Partie 1; Delorme & Collin du Bocage, Paris, 24 February 2010, lot 79.



3

3
HYDRIE À FIGURES ROUGES, CÉRAMIQUE, GRANDE GRÈCE, APULIE, CIRCA IVE S. AV. J.-C.

A SOUTH ITALIAN RED-FIGURE HYDRIA, CIRCA 4TH CENTURY B.C., decorated with a nude male figure holding a patera and tympanum, standing in front of a seated draped female figure holding a box aloft and a fan before her, rosettes and a fillet in the field, band of wave below, scrolling palmettes beneath the handle on the reverse, and a band of laurel at the neck, details in added white, 30cm high, 24cm wide, 18cm deep

€2,000 - 3,000
 £1,700 - 2,600
 US\$2,400 - 3,600

Provenance:

Collection of an Austrian noble family, acquired 1750-1780.
The Property of an Austrian Noble Family; Christie's, London, 27 October 2009, lot 24 (part).



4

4
HYDRIE À FIGURES ROUGES, CÉRAMIQUE, GRANDE-GRÈCE, APULIE, CIRCA IVE S. AV. J.-C.

A SOUTH ITALIAN RED-FIGURE HYDRIA, CIRCA 4TH CENTURY B.C., depicting a seated woman holding a wreath and patera, a band of waves below, rays around the shoulder, band of rosettes around the neck, scrolling palmettes beneath the handles, 30cm high, 23.5cm wide, 18cm deep

€2,000 - 3,000
 £1,700 - 2,600
 US\$2,400 - 3,600

Provenance:

Collection of an Austrian noble family, acquired 1750-1780.
The Property of an Austrian Noble Family; Christie's, London, 27 October 2009, lot 24 (part).



5

5
APPLIQUÉ REPRÉSENTANT MEDUSA, TERRE CUITE, MAGNA GRAECIA, CANOSSA, CIRCA IIIE-III S. AV. J.-C.
 A CANOSAN TERRACOTTA MEDUSA APPLIQUÉ, CIRCA 3RD-2ND CENTURY B.C., the head of the Gorgon with snake curls, wings emerging from her temples, further snakes tied around her neck, surrounded by leaf-shaped rays, traces of pink and blue pigments, pierced at the top for suspension, *5cm high, 17cm diam.*

€2,500 - 3,500
 £2,100 - 3,000
 US\$3,000 - 4,200

Provenance:
 Private collection, France, 19th Century.
 Anonymous sale; Gorny and Mosch, Munich, 12 December 2012, lot 348.

There is another similar appliqué for a funerary vessel in the Princeton University Art Museum, object no. y1982-6, and also in the British Museum, London, acc. no. 1863,0728.415.



6

6
TÊTE DE FEMME OU DE DÉESSE, TERRE CUITE, ART ÉTRUSQUE, CIRCA VE-IVE S. AV. J.-C.
 AN ETRUSCAN TERRACOTTA VOTIVE HEAD OF A WOMAN OR GODDESS, CIRCA 5TH-4TH CENTURY B.C., the elaborate coiffure drawn into a plaited bun and dressed with a centrally-knotted slender diadem, her face tilted slightly to her proper left, modelled with almond shaped eyes and full lips, *28cm high, 19cm wide, 23cm deep*

€3,000 - 5,000
 £2,600 - 4,300
 US\$3,600 - 5,900

Provenance:
 with J. Uzan, Paris.
 Acquired from the above May 2015.



7

**GRAND BUSTE VOTIF, TERRE CUITE, ART ÉTRUSQUE,
CIRCA IIIE-III E S. AV. J.-C.**

AN ETRUSCAN TERRACOTTA VOTIVE MALE BUST, CIRCA 3RD-2ND CENTURY B.C., the hollow body representing the naturalistic form of a nude youth, with red slip overall, *57cm high, 33cm wide, 23cm deep*

€15,000 - 20,000

£13,000 - 17,000

US\$18,000 - 24,000

Provenance:

William Froelich collection, New York, 1970s.

Anonymous sale; Pierre Bergé, Paris, 29 November 2014, lot 225.

In Etruscan religion, anatomical votive objects were left as offerings thanking the gods for curing their ailments. The offering would take the form of the afflicted body part and ranged from limbs, for example feet and arms, to more obscure body parts such as wombs, ears and intestines. Torsos were either depicted intact, like the above lot, or with an incision through the chest and stomach revealing the viscera within.

For another naturalistically rendered torso see the British Museum, London, acc. no. 1834,1011.1.



8

8

BATILLUM, PELLE À ENCENS, BRONZE, ART ROMAIN, CIRCA IER-IIIE S. AP. J.-C.

A ROMAN BRONZE INCENSE SHOVEL, BATILLUM, CIRCA 1ST-2ND CENTURY A.D., the rectangular bowl with four short rests on the underside, the handle in the form of a Corinthian column with lion paw support, traces of gilding on the sides and upper handle, 42cm long, 15cm wide, 7cm deep

€2,000 - 3,000

£1,700 - 2,600

US\$2,400 - 3,600

Provenance:

with J. Uzan, Paris.

Acquired from the above May 2015.

This ceremonial fire shovel (*batillum*) would have been used for burning incense. There are two very similar examples in the Metropolitan Museum of Art of the same date, acc. nos. 00.13.6-7.

9

PATÈRE, BRONZE, ART ROMAIN, CIRCA IER-IIIE S. AP. J.-C.

A ROMAN TINNED BRONZE PATERA, CIRCA 1ST-2ND CENTURY A.D., the central tondo engraved with a plant motif encircled by concentric rings, 5cm high, 20cm diam. of bowl, 34cm wide

€800 - 1,200

£690 - 1,000

US\$950 - 1,400

Provenance:

Anonymous sale; Hermann Historica, Munich, 18 April 2008, lot 107.



9



10

10

PAIRE DE STRIGILES AVEC FLACON À HUILE, BRONZE, ART ROMAIN CIRCA IER - IIIE S. AP. J.-C.

A PAIR OF ROMAN STRIGILS AND A ROMAN BRONZE ARYBALLOS, CIRCA 1ST-3RD CENTURY A.D., with ribbed curved blades; the lidded aryballos with dolphin handles and suspension chain, *both strigils 23cm high, 11cm wide, 2.5cm deep; aryballos 10cm high, 7.5cm wide, 7.5cm deep* (3)

€2,000 - 3,000
 £1,700 - 2,600
 US\$2,400 - 3,600

Provenance:

German art market.
 with Antiken-Kabinett, Frankfurt.
 Acquired from the above 21 June 2010.

11

ÉLÉMENT DE CHAR PASSE-GUIDE, AIGLE ET CANARDS, BRONZE, ART ROMAIN, CIRCA IIE S. AP. J.-C.

A ROMAN BRONZE EAGLE-HEADED CHARIOT FITTING, CIRCA 2ND CENTURY A.D., with incised plumage, the curved arms with duck head terminals, *16.5cm high, 17cm wide, 10cm deep*

€1,500 - 2,000
 £1,300 - 1,700
 US\$1,800 - 2,400

Provenance:

European art market.
 Anonymous sale; Gerhard Hirsch, Munich, 15 February 2011, lot 508.



11



12

12

EROS, BRONZE, ART ROMAIN, CIRCA IER-IIIÉ S. AP. J.-C.

A ROMAN BRONZE FIGURE OF CUPID, CIRCA 1ST-3RD CENTURY A.D., the winged youthful nude figure with left arm raised, 19cm high, 13.5cm wide, 5cm deep

€4,000 - 6,000
 £3,400 - 5,100
 US\$4,700 - 7,100

Provenance:

Private noble collection, Austria.
 Private collection, Vienna, acquired in the 1980s from Vienna art market.
 Anonymous sale; Hermann Historica, Munich, 5 November 2014, lot 3594.



13

13

DIEU HÉRACLÈS, ARGENT, ART ROMAIN, CIRCA IER-IIIÉ S. AP. J.-C.

A ROMAN GILT-SILVER FIGURE OF HERCULES, CIRCA 1ST-2ND CENTURY A.D., the nude bearded hero holding a kantharos in his proper right hand, wearing a fillet in his hair, 9cm high, 4.5cm wide, 3.5cm deep

€3,000 - 5,000
 £2,600 - 4,300
 US\$3,600 - 5,900

Provenance:

with Gallery Drees Archeo, Brussels.
 Acquired from the above 24 January 2008.

The above depiction of Hercules, swaggering with a kantharos, is known as 'the drunken Hercules'. There are two common examples of this type, one like the above lot, where the hero leans heavily to one side while holding out a drinking vessel, and the other where he unsteadily and comically relieves himself. This image of an inebriated Hercules juxtaposes one we are used to of the Hero in action, carrying out one of his labours. Hercules was known to be a heavy drinker with multiple stories referencing this, for example, when he challenged Dionysus to a drinking contest, and lost.

For a similarly sized Hercules with a fillet in his hair see the British Museum, London, acc. no. 1824,0446.7, and for another holding a drinking vessel also in the British Museum see acc. no. 1867,0508.773.



14

**DIEU MERCURE, BRONZE, ART ROMAIN,
CIRCA IER-IIIE S. AP. J.-C.**

A ROMAN BRONZE MERCURY, CIRCA 1ST-2ND CENTURY A.D., the well-modelled god depicted nude, holding his money bag in his proper right hand, his head angled down and slightly to the right, the eyes inlaid in silver, standing on an ancient pedestal base, possibly not belonging, 23.4cm high, 7cm wide, 6.5cm deep

€15,000 - 20,000

£13,000 - 17,000

US\$18,000 - 24,000

Provenance:

William Froelich collection, New York, 1970s.
with La Reine Margot, Paris.

The above lot is heavily inspired by the Doryphoros by Polykleitos. Best known for his bronze sculptures of young athletic males, Polykleitos was one of the most recognized artists of his time. He was actively creating between 450-415 B.C. and his works survive to this day through marble and bronze copies dating to the Imperial Roman period. His works are categorized through their dynamic postures, weight resting on one leg, the opposite shoulder raised creating an 'S'-curve in the torso, finely carved musculature and the juxtaposition of tense and relaxed muscle.

For another Polykleitan inspired Mercury bronze figure see British Museum, London, acc. no. 1851,0813.2, and a very similar bronze at the Badisches Landesmuseum in Karlsruhe, once catalogued as Narcissus, but more likely to be a Mercury missing his money-bag, reproduced in D.G. Mitten & S.F. Doeringer, *Master Bronzes of the Ancient World*, Mainz, 1968, no. 245.

15

DIEUX MERCURE ET DIONYSOS ENFANT, BRONZE, ART GALLO-ROMAIN, CIRCA IE-IIIE S. AP. J.-C.

A GALLO-ROMAN GILT BRONZE MERCURY AND INFANT DIONYSUS, CIRCA 1ST-2ND CENTURY A.D., the god, nude but for a himation draped at his shoulder and around his proper left arm, with short, curling hair and well-defined musculature, his head inclined towards the infant Dionysus, cradled in the crook of his left arm, with extensive gilding remaining overall, *17cm high, 9cm wide, 5.5cm deep*

€40,000 - 60,000

£34,000 - 51,000

US\$47,000 - 71,000

Provenance:

Reputedly found in northern France at the end of the 19th Century, stated on 1967 invoice.

Charles Lormier (1825-1900), Rouen, France, stated on 1967 invoice. with La Reine Margot, Paris.

Michel de Briy (1890-1970) collection, acquired from the above 22 March 1967.

Published:

A. Bonnefoy & M. Feugère, 'Hermes Dionysophore', *Studies in Ancient Art and Civilisation*, vol. 21, July 2018, pp. 143-172.

Dionysus, son of Zeus and his mortal lover, Semele, was birthed from Zeus's thigh after he smote Semele with his divine radiance. To save the unborn baby Zeus sewed Dionysus into his thigh, where he remained until his birth. To protect the newborn infant from Zeus's jealous wife Hera, the baby was secretly transported to mount Nysa by Hermes/Mercury to be raised by nymphs.

Another Gallo-Roman gilt bronze Mercury, named the 'Mercury of Bavay', was exhibited at the Royal Academy in London in 2012 (*Bronze*, cat. no. 43, from the Musée d'Art Classique de Mougins, Mougins, inv. no. MMoCA782). Though the Bavay example depicts an older, more muscular Mercury, the proportions and gilding, as well as the Gallic connection, are obvious commonalities with this lot. The choice of Mercury appears to have been a popular subject in Gaul; as Julius Caesar wrote, 'The god they [the Gauls] honour above all others is Mercury. He has a great number of statues; they consider him the inventor of all the arts and the guide of travellers, and he presides over all manner of trades' (*Bellum Gallicum*, Book VI).

For other marble and bronze statues of Mercury and Dionysos, see S. Reinach, *Répertoire de la statuaire grecque et romaine*, vol. II, p. 173, including bronzes found in northern France and Switzerland.





16

16
AVANT BRAS DE STATUE, BRONZE, ART ROMAIN, CIRCA IER-III E S. AP. J.-C.

A ROMAN BRONZE RIGHT ARM, CIRCA 1ST-2ND CENTURY A.D., the life-size hollow cast limb with open palm, the extended fingers with well defined nails, 49cm long, 12cm wide, 8cm deep

€4,000 - 6,000
£3,400 - 5,100
US\$4,700 - 7,100

Provenance:

Bavarian art market, 1990s.
Anonymous sale; Gorny and Mosch, Munich, 25 June 2014, lot 65.



17

17
MIROIR, BRONZE, ART ROMAIN, CIRCA IER S. AV.-III E S. AP. J.-C.

A ROMAN BRONZE MIRROR, CIRCA 1ST CENTURY B.C.-2ND CENTURY A.D., one side of the disc mirror with concentric rings, the handle with duck head terminal, flanked by dolphins, 28.5cm high, 17cm wide, 2.5cm deep

€1,500 - 2,000
£1,300 - 1,700
US\$1,800 - 2,400

Provenance:

Acquired from a French auction house, at least 10 years ago.

Duck heads were a frequent motif in Roman bronze-work and were used to decorate ladle and mirror handles. There is an example of a charming Roman double duck head handle attachment in the Metropolitan Museum, Accession no. 1972.118.89. Dolphins too were a popular motif associated with romance and Venus.

18

BUSTE DU DIEU ZEUS SERAPIS, ALBTRE, ART ROMAIN, CIRCA IER-IIIE S. AP. J.-C.

A ROMAN ALABASTER BUST OF ZEUS SERAPIS, CIRCA 1ST-2ND CENTURY A.D., the god with full beard and lidded almond-shaped eyes, wearing a fillet atop his luxuriant wavy hair, a himation draped around the shoulders, the modius now missing, 24.5cm high, 18cm wide, 12cm deep

€10,000 - 15,000

£8,600 - 13,000

US\$12,000 - 18,000

Provenance:

Anonymous sale; Collin du Bocage, Paris, 11 June 2014, lot 21.

Sculptures of Serapis, like the above, are a type modelled after the monumental cult statue in Alexandria created by Bryaxis around the late 4th- early 3rd Century B.C., showing Serapis seated on a throne holding a sceptre with Cerberus at his feet. Over time Serapis was worshipped and celebrated as a sun god, then a god of the underworld, and later as a god of healing and fertility. It is believed that Ptolemy I brought the deity to Egypt and his cult later spread throughout the Roman Empire. For a similar depiction of Serapis and discussion of the Bryaxis type, see A. Stewart, *Greek Sculpture: An Exploration*, New Haven and London, 1990, vol.II, no.633.



18

19

MAIN, BRONZE, ART ROMAINE, CIRCA IER-IIIE S. AP. J.-C.

A ROMAN BRONZE RIGHT HAND, CIRCA 1ST-2ND CENTURY A.D., from a life-size statue, naturalistically modelled, 6cm high, 9cm wide, 18cm deep

€800 - 1,200

£690 - 1,000

US\$950 - 1,400

Provenance:

U.L. collection, Westphalia, 1980s.

Anonymous sale; Gorny and Mosch, Munich, 9 July 2021, lot 106.



19



20

20

TÊTE DE DÉESSE, MARBRE, ART ROMAIN, CIRCA IER - IIE S. AP. J.-C.

A ROMAN MARBLE HEAD OF A GODDESS, CIRCA 1ST-2ND CENTURY A.D., likely Cybele, wearing a polos atop her centrally-parted wavy hair, remains of two supports at the back of her crown, her face sensitively carved, 16.5cm high, 13cm wide, 13cm deep

€3,000 - 5,000

£2,600 - 4,300

US\$3,600 - 5,900

Provenance:

Old private collection, Neuilly-Sur-Seine.
with La Reine Margot, Paris.

For a seated Cybele with similar treatment of the hair and face, and gently-flaring polos headdress, see a statuette in the Metropolitan Museum of Art, New York, acc. no. 22.139.24. Such seated figures are noted to be ultimately based on a gold and ivory statue by the Greek sculptor Pheidias or Agorakritos, dating to the late 5th Century B.C.



21

21

TORSE DE EROS, MARBRE, ART ROMAIN, CIRCA IER-III S. AP. J.-C.

A ROMAN MARBLE TORSO OF EROS, CIRCA 1ST-2ND CENTURY A.D.,

The standing nude youth leaning against a tree trunk, with remains of the wings preserved at the back, 38cm high, 22cm wide, 21cm deep

€3,000 - 5,000

£2,600 - 4,300

US\$3,600 - 5,900

Provenance:

Munich art market.
Anonymous sale; Gorny and Mosch, Munich, 19 June 2009, lot 263.



22

**DIEU DIONYSOS TRAPÉZOPHOROS, MARBRE, ART ROMAIN,
CIRCA IER-IIIE S. AP. J.-C.**

A ROMAN MARBLE DIONYSUS TRAPEZOPHOROS, CIRCA 1ST-
2ND CENTURY A.D. with the head of Dionysus, wearing a berried ivy
wreath in his wavy luxuriant hair, tendrils falling onto his shoulders, set
against a tall rectangular dorsal pillar, with stepped upper section, on a
modern marble plinth, *43.5cm high, 14.5cm wide, 14cm deep*

€6,000 - 8,000

£5,100 - 6,900

US\$7,100 - 9,500

Provenance:

Acquired from La Reine Margot, Paris.

For details of the charges payable in addition to the final Hammer Price of each Lot
please refer to paragraphs 7 & 8 of the Notice to Bidders at the back of the catalogue.



23



23

DEUX CHEVAUX, BRONZE, ART ROMAIN, CIRCA IIE-IIIIE S. AP. J.-C.
 TWO ROMAN BRONZE HORSES, CIRCA 2ND- 3RD CENTURY A.D., one on a rectangular base, the left leg resting on a tabula, possibly a chariot attachment; the other prancing horse with trappings, details incised on both, *horse on plaque: 9cm high, 11cm wide, 3cm deep; smaller: 7.3cm high, 7.5cm wide, 2cm deep (2)*

€2,000 - 3,000
 £1,700 - 2,600
 US\$2,400 - 3,600

Provenance:

Horse with tabula: Private collection, the Boulonnais, acquired in the 1980s. *Entière collection de Monsieur B. Partie 1; Delorme & Collin du Bocage, Paris, 24 February 2010, lot 145.*



24

24

AIGLE AU SERPENT, BRONZE, ART ROMAIN, CIRCA IIE-IIIIE S. AP. J.-C.
 A ROMAN BRONZE EAGLE WITH A SNAKE, CIRCA 2ND-3RD CENTURY A.D., standing on a defeated snake with wings furred, *8cm high, 5cm wide, 4cm deep*

€800 - 1,200
 £690 - 1,000
 US\$950 - 1,400

Provenance:

with Juergen Haering, Freiburg.
 Acquired from the above 7 June 2008.



25

25

LION APPLIQUÉ, BRONZE, ART ROMAIN, CIRCA IER-IIIIE S. AP. J.-C.
 A ROMAN BRONZE APPLIQUÉ WITH LION, CIRCA 1ST-3RD CENTURY A.D., the centre cast in relief with a lion, surrounded by an open-work design, *8.5cm diam., 2cm deep*

€800 - 1,200
 £690 - 1,000
 US\$950 - 1,400

Provenance:

Private collection, Germany, 1990s.
 Anonymous sale; Gorny and Mosch, Munich, 12 December 2012, lot 317.



26

26
BOUC, BRONZE, ART ROMAIN, CIRCA IER-IIIE S. AP. J.-C.

A ROMAN BRONZE GOAT, CIRCA 1ST-2ND CENTURY A.D., striding forward with a thick fleece of overlapping locks, the head inclined to the right, with a short beard and long curling horn, the other lost, 6cm high, 2cm wide, 5.5cm deep

€800 - 1,200
 £690 - 1,000
 US\$950 - 1,400

Provenance:
 Acquired from La Reine Margot, Paris.

27
FULCRUM: TÊTE DE MULE, BRONZE, ART ROMAIN, CIRCA IER-IIIE S. AP. J.-C.

A ROMAN BRONZE MULE HEAD FULCRUM, CIRCA 1ST-2ND CENTURY A.D., the head turned to its left with short mane, 6.5cm high, 14.5cm wide, 8cm deep

€4,000 - 6,000
 £3,400 - 5,100
 US\$4,700 - 7,100

Provenance:
 Anonymous sale; Collin du Bocage, Paris, 11 June 2014, lot 29.

This attachment was once the end of a *fulcra*, or head-board, of a Roman reclining couch (*klinai*). Often depicting a horse or a hound, the two most important domesticated animals in ancient Rome, these ornaments were naturalistically and sensitively modelled. Cf. an example from the George Ortiz collection reproduced in D.G. Mitten & S.F. Doeringer, *Master Bronzes from the Classical World*, Mainz, 1968, no. 147.



27

28



28

DEUX MIRMIILLONS S'AFFRONTANT, PLOMB, ART ROMAIN, CIRCA IER-IIIE S. AP. J.-C.

TWO ROMAN LEAD GLADIATOR FIGURES, CIRCA 1ST-2ND CENTURY A.D., the opposing Mirmillo gladiators with part of a wheeled base remaining on one, with wheels: 7.5cm high, 4cm wide, 2.5cm deep; no wheels: 4.5cm high, 3.5cm wide, 3cm deep (2)

€1,000 - 1,500
 £860 - 1,300
 US\$1,200 - 1,800

Provenance:

Private collection, South Germany.
 Anonymous sale; Hermann Historica, Munich, 13 October 2010, lot 2072.

These two gladiators were likely once part of a child's toy: they would have been attached to a four-wheeled cart, which could be pushed backwards and forwards like the toy cars of today. Roman children played with a wide variety of toys which look very similar to modern toys, including terracotta animal rattles, round marbles, whistles, dolls, balls and figures on wheels like the above lot. There is a lead appliqué of a gladiator in the British Museum, dated to the 1st-2nd Century A.D., acc. no. 1958,0507.1.

29

DIEU JUPITER PANTHÉE, BRONZE, ART ROMAIN, CIRCA IIE S. AP. J.-C.

A ROMAN BRONZE SYNCRETIC FIGURE, CIRCA 2ND CENTURY A.D., of Jupiter combining aspects of Cupid and Hermes, 8.5cm high, 4.5cm wide, 3cm deep

€1,500 - 2,000
 £1,300 - 1,700
 US\$1,800 - 2,400

Provenance:

B. R. collection.
 Anonymous sale; Gorny and Mosch, Munich, 12 December 2012, lot 265.

For another example of Jupiter Panthée in the Louvre, Numéro catalogue : Br 482, Numéro d'entrée : MNC 714. Syncretistic cults first appeared in the Hellenistic period but became popular during the 2nd Century A.D. Such a figure as the above lot would have combined powers of Jupiter, ruler of the gods and god of the sky and thunder along with attributes of his son Mercury, associated with travel and commerce and Cupid, god of love.

29





30

30
MINERVA ET HERACLÈS : RELIEF, BRONZE, ART ROMAIN, CIRCA IIE-IIIIE S. AP. J.-C.

A ROMAN TINNED BRONZE RELIEF WITH MINERVA AND HERCULES, CIRCA 2ND-3RD CENTURY A.D., set within an colonnaded arcade, Minerva wearing crested helmet and aegis, holding a shield and spear, nude Hercules holding his club and lion skin, details incised including inscriptions around each figure, traces of gilding overall, 15.6cm high, 19.8cm wide, 1cm deep

€4,000 - 6,000
 £3,400 - 5,100
 US\$4,700 - 7,100

Provenance:

Private collection, acquired in Paris in the 1980s.
 Anonymous sale; Gorny and Mosch, Munich, 12 December 2012, lot 40.

Roman Minerva (and Greek Athena), was the patron goddess of heroes and is often depicted assisting or overseeing their labours. In some tellings of the labours of Hercules, Minerva assisted with the slaying of the Hydra, and shouldering the world while Atlas retrieved the apples of the Hesperides.

31
APPLIQUÉ DE LEGIONNAIRE ET DIEU PROTECTEUR, BRONZE, ART ROMAIN, CIRCA IIE S. AP. J.-C.

A ROMAN BRONZE APPLIQUÉ, CIRCA 2ND CENTURY A.D., cast in high relief with a seated deity and a soldier, 8.5cm high, 7cm wide, 6cm deep

€2,000 - 2,500
 £1,700 - 2,100
 US\$2,400 - 3,000

Provenance:

Dr René Anciaux collection, Belgium, formed 1974-1995.
 Anonymous sale; Pierre Bergé, Paris, 21 May 2014, lot 238.



31



32

32

TORSE MASCULIN DE GENIUS, MARBRE, ART ROMAIN, CIRCA IIE-IIIIE S. AP. J.-C.

A ROMAN MARBLE TORSO OF A GOD, LIKELY A GALLIC GENIUS, CIRCA 2ND-3RD CENTURY A.D., wearing a torc and a himation draped around his waist, pulled up over his left shoulder, the nude torso with defined abdominals and iliac crests, holding a cornucopia in the crook of his left arm, 41cm high, 19cm wide, 18cm deep

€4,000 - 6,000
 £3,400 - 5,100
 US\$4,700 - 7,100

Provenance:

Private collection, Europe, acquired by the present owner prior to 2000.
 Anonymous sale; Bonhams, London, 28 April 2010, lot 143.

The present lot, with a partially draped torso and cornucopia, depicts a Genius, a type of minor god which could act as a personal deity or a protector for a household or place. This figure seems to have once been bearded, and wears a torc, possibly suggesting a Gallic connection. For similar, see the British Museum, Arachne Database no. 1070906, and a Genius in the Museum of London, Arachne Database no. 1071490, wearing two thick necklaces.



33

33

FRAGMENT DE COUVERCLE DE SARCOPHAGE, MARBRE, ART ROMAIN, CIRCA IIIIE S. AP. J.-C.

A ROMAN MARBLE SARCOPHAGUS LID FRAGMENT, CIRCA 3RD CENTURY A.D., the corner of the sarcophagus lid carved in relief with a tragic theatre mask, a panel to the right depicting a flying winged erote holding a garland before him, 20cm high, 45cm wide, 8cm deep,

€1,500 - 2,000
 £1,300 - 1,700
 US\$1,800 - 2,400

Provenance:

Anonymous sale; Tajan, Paris, 30 June 2003, lot 316.

34

JUPITER BRONTAIOS, BRONZE, ART ROMAIN, CIRCA IIE-IIIIE S. AP. J.-C.

A ROMAN BRONZE FIGURE OF JUPITER (ZEUS) BRONTAIOS, CIRCA 2ND-3RD CENTURY A.D., the naked deity standing with his weight resting on his proper right leg, his hands curled for holding a now missing sceptre and thunderbolt or phiale, depicted with flowing hair and full beard, 21.4cm high, 14cm wide, 9cm deep

€10,000 - 15,000

£8,600 - 13,000

US\$12,000 - 18,000

Provenance:

Private collection, Bavaria, since at least the 1970s.
Anonymous sale; Gorny and Mosch, 23 June 2010, lot 14.

This bronze figure is based on the lost statue of Zeus Brontaios (the Thunderer), created by the Greek sculptor Leochares in the mid 4th Century B.C. There is another 2nd Century A.D. statuette of Zeus Brontaios at the J. Paul Getty Museum, acc. no. 96.AB.42, and there is also a comparable earlier example in the British Museum, London, acc. no. 1913,1021.1.



34

35

DIEU MERCURE, BRONZE, ART ROMAIN, CIRCA IER-IIIIE S. AP. J.-C.

A ROMAN BRONZE FIGURE OF MERCURY, CIRCA 1ST-3RD CENTURY A.D., the nude figure with wings in his hair, drapery at his left arm, 15cm high, 7cm wide, 3.5cm deep

€2,000 - 3,000

£1,700 - 2,600

US\$2,400 - 3,600

Provenance:

Private collection, Austria, since early 1990s.
Anonymous sale; Gorny and Mosch, Munich, 14 December 2007, lot 271.
Anonymous sale; Gorny and Mosch, Munich, 23 June 2010, lot 271.



35

36

DÉESSE ISIS-APHRODITE, BRONZE, ART ROMAIN, CIRCA IER-IIIIE S. AP. J.-C.

A ROMAN BRONZE ISIS-APHRODITE, CIRCA 1ST-3RD CENTURY A.D., the goddess depicted nude, standing contrapposto, wearing a pendant necklace and armlets, tendrils falling to her left shoulder, 38.5cm high, 14cm wide, 9cm deep

€20,000 - 30,000

£17,000 - 26,000

US\$24,000 - 36,000

Provenance:

Dubois collection, Belgium.

Delvaux collection, Belgium.

with Akanthos Ancient Art, Antwerp, 2012.

There is a similar wide-hipped, fleshy bronze figure of Isis-Aphrodite wearing the same type of collar necklace in the Walters Art Gallery, Baltimore, acc. no. 54.949. The figure, with one arm missing, shows how the arms were cast separately, below the level of the armlets. The Romans were fascinated by the Mystery Cults of the East including that of Isis which became a popular syncretistic cult when combined with Venus.



37

APPLIQUÉ : DIEU MERCURE, ARGENT, ART ROMAIN, CIRCA IIE-IIIIE S. AP. J.-C.

A ROMAN SILVER BUST OF MERCURY, CIRCA 2ND-3RD CENTURY A.D., the nude god with curling hair, wearing petasos cap, 5.6cm high, 5cm wide, 1.5cm deep

€1,000 - 1,500
£860 - 1,300
US\$1,200 - 1,800

Provenance:

Anonymous sale; Christie's, London, 5 June 1998, lot 179.
Anonymous sale; Tajan, Paris, 8 February 2008, lot 301.

38

EROS, BRONZE, ART ROMAIN, CIRCA IIE-IIIIE S. AP. J.-C.

A ROMAN BRONZE EROS, CIRCA 2ND-3RD CENTURY A.D., the nude winged god striding forward holding a bunch of grapes in his lowered left hand, vines on his torso, set on an ancient plinth, possibly not belonging, 15.5cm high, 9cm diam.

€1,500 - 2,000
£1,300 - 1,700
US\$1,800 - 2,400

Provenance:

Hermann collection.
Anonymous sale; Gorny and Mosch, Munich, 12 December 2008, lot 315.

39

BOL AU BOUQUETIN, ARGENT, ART SASSANIDE, CIRCA VIE-VIIIIE S. AP. J.-C.

A SASSANIAN SILVER BOWL, CIRCA 6TH-7TH CENTURY A.D., of oval navette form, the double-skinned bowl with an incised and gilded ibex on the interior, 5.5cm high, 21cm wide, 11.5cm deep

€2,000 - 3,000
£1,700 - 2,600
US\$2,400 - 3,600

Provenance:

Private collection, England.
Anonymous sale; Gorny and Mosch, Munich, 22 June 2007, lot 596.
with Antiken-Kabinett, Frankfurt.
Anonymous sale; Gorny and Mosch, Munich, 12 December 2012, lot 563.



37



38



39



40
PARURE DE L'AGE DU BRONZE, BRONZE, ART EUROPÉEN, CIRCA 1ER MILLÉNAIRE AV. J.-C.

A BRONZE AGE NECKLACE, CIRCA 1ST MILLENNIUM B.C., composed of bronze tubular beads and openwork crescentic pendants, re-strung, *95cm long*

€800 - 1,200
 £690 - 1,000
 US\$950 - 1,400

Provenance:
 Anonymous sale; Hermann Historica, Munich, 22 April 2009, lot 155.

41
TROIS COURONNES, OR, ART GREC, HELLÉNISTIQUE, CIRCA IIIE-IER S. AV. J.-C.

THREE GREEK HELLENISTIC GOLD WREATHS, CIRCA 3RD-1ST CENTURY B.C., two composed of sheet gold single and double myrtle leaves with central veins, and one of oak leaves, each attached by twisted gold wire to a diadem composed of sheet gold re-mounted over a modern metal tubular rod core, *some leaves detached, largest wreath 20cm diam.*

€3,000 - 5,000
 £2,600 - 4,300
 US\$3,600 - 5,900

Provenance:
 R.v.F. collection, Germany.
 Anonymous sale; Gorny and Mosch, Munich, 19 June 2009, lot 128.



42



43



44

42

PAIRE DE BOUCLES D'OREILLES ET UNE BAGUE ENFANT, OR ET GRENAT, ART ROMAIN, CIRCA IER-IIIÈ S. AP. J.-C.

A PAIR OF ROMAN GOLD EARRINGS AND A ROMAN GOLD AND GARNET CHILD'S RING, CIRCA 1ST-3RD CENTURY A.D., the earrings with an applied domed disc with central granular boss, the ring with two garnet cabochons, flanked by granular decoration, earrings 1.8cm diam.; ring 1.5cm diam. (3)

€600 - 800
£510 - 690
US\$710 - 950

Provenance:

Ring: Private collection, Germany, 1950s. M.G. collection, Southern Germany, since 2000. Anonymous sale; Gorny and Mosch, Munich, 30 June 2017, lot 314.

43

PAIRE DE BRACELETS SERPENTIFORMES, OR, CIRCA IVER-VIIE S. AP. J.-C.

A PAIR OF LATE ROMAN GOLD BRACELETS, CIRCA 4TH-7TH CENTURY A.D., the penannular bracelets with separately made lion-head terminals, 6.5cm high, 7.2cm largest diam. (2)

€3,000 - 5,000
£2,600 - 4,300
US\$3,600 - 5,900

Provenance:

Collection d'un diplomate Parisien; Delorme & Collin du Bocage, Cannes, 1 August 2011, lot 84.

44

COLLIER À MÉDAILLONS, OR ET GRENATS, ART ROMAIN OU ISLAMIQUE, CIRCA IIE-VIIE S. AV. J.-C.

A ROMAN OR ISLAMIC GOLD AND GARNET NECKLACE, CIRCA 2ND -8TH CENTURY A.D., composed of three large gold rosette medallions each with a central group of five garnet cabochon, one now missing, with eight smaller floral and granulated medallions each set with a central garnet cabochon, restrung in modern times and interspersed with irregular garnet beads, 79cm long

€3,000 - 5,000
£2,600 - 4,300
US\$3,600 - 5,900

Provenance:

Anonymous sale; Boisgirard & Associates, Paris, 16 November 2007, lot 172.

Militaria



45



46

45

**ELEMENT DE CEINTURE AUX CAPRINS, BRONZE, IRAN,
CIRCA 1ER MILLÉNAIRE AV. J.-C.**

AN IRANIAN BRONZE BELT ELEMENT, CIRCA 1ST MILLENNIUM B.C., embossed with a hunting scene of three running ibex confronted by a lion, double pierced at either end for attachment loops, *7cm high, 29cm long, 5cm deep*

€800 - 1,200
£690 - 1,000
US\$950 - 1,400

Provenance:

Mrs Elias-Vaes (1908-2002) collection, Netherlands, acquired late 1960s-early 1970s.
Property from the Private Collection of the late Mrs Elias-Vaes;
Christie's, London, 29 April 2010, lot 95 (part).

46

**BOUCLIER TONDO, BRONZE, IRAN,
CIRCA 1ER MILLENAIRE AV. J.-C.**

A PERSIAN BRONZE SHIELD TONDO, CIRCA EARLY 1ST MILLENNIUM B.C., of convex circular form with conical central boss, embossed with concentric rings of geometric motifs, pierced at the edges for attachment, *12cm high, 34cm diam.*

€2,500 - 3,500
£2,100 - 3,000
US\$3,000 - 4,200

Provenance:

Axel Guttman (1944-2001) collection, Berlin (R 213/AG 332), acquired in Freiburg in 1990.
Antiquities from the Axel Guttman Collection and Other Properties;
Hermann Historica, Munich, 8 October 2008, lot 33.



47

BOUCLIER PERSE, BRONZE, CIRCA 1ER MILLÉNAIRE AV. J.-C.

A PERSIAN BRONZE SHIELD, CIRCA EARLY 1ST MILLENNIUM B.C., the convex shield with cutaway sides, hemispherical bosses attached around the perimeter and a central studded circular plate, the reverse with a reinforcement band around the edge, 47.5cm high, 44.5cm wide, 4.3cm deep

€20,000 - 30,000

£17,000 - 26,000

US\$24,000 - 36,000

Provenance:

Axel Guttman (1944-2001) collection, Berlin (AG 287).

The Art of Warfare, the Axel Guttman Collection, Part I; Christie's, London, 6 November 2002, lot 30.

Antiquities from the Axel Guttman Collection and Other Properties; Hermann Historica, Munich, 11 April 2008, lot 300.

Persian shields served both practical and dedicatory purposes and were sometimes used as votive offerings to gods. Depictions of Persian shields can be seen on the bronze gates of Balawat which record the Assyrian campaigns against the Urartians in the 9th Century B.C. Shields are also depicted on bronze belts of the same period showing parading foot soldiers holding small shields. cf. R. Merhav (ed.) *Urartu, a Metalworking Center in the First Millennium B.C.E.*, The Israel Museum, Jerusalem, 1991, p. 134 fig. 9.



48

48
GRAND ÉPÉE LURISTAN, FER ET BRONZE,
CIRCA XIE-IXE S. AV. J.-C.

A LARGE LURISTAN BRONZE AND IRON SWORD, CIRCA 11TH-9TH CENTURY B.C., with bronze double-eared pommel and characteristic hilt, the grip adorned with raised bosses, with a tapering iron blade, *91.5cm long, 10 wide, 6cm deep*

€2,000 - 3,000
£1,700 - 2,600
US\$2,400 - 3,600

Provenance:

Mrs Elias-Vaes (1908-2002) collection, Netherlands, acquired late 1960s-early 1970s.

Property from the Private Collection of the late Mrs Elias-Vaes;
Christie's, London, 29 April 2010, lot 100 (part).



49

49
GRAND EPÉE LURISTAN, BRONZE, CIRCA XIE-IXE S. AV. J.-C.

A LARGE LURISTAN BRONZE SWORD, CIRCA 11TH-9TH CENTURY B.C., with double-eared pommel, rectangular grip, characteristic guard and long tapering blade, *95cm long, 11cm wide, 11cm deep*

€2,000 - 3,000
£1,700 - 2,600
US\$2,400 - 3,600

Provenance:

with Juergen Haering, Freiburg.
Acquired from the above 4 June 2009.



50

50
ÉPÉE LURISTAN, BRONZE,
CIRCA XIE-IXE S. AV. J.-C.

A LURISTAN BRONZE SWORD, CIRCA 11TH-9TH CENTURY B.C., with tapering blade, characteristic hilt and double-eared pommel with protruding nodules, *62cm long, 6cm wide, 6cm deep*

€1,500 - 2,000
£1,300 - 1,700
US\$1,800 - 2,400

Provenance:

Private collection, North Carolina, acquired ca. 1980.
Anonymous sale; Christie's, New York, 3 June 2009, lot 38 (part).



51

51
EPÉE LURISTAN, BRONZE,
CIRCA XIE-IXE S. AV. J.-C.

A LURISTAN BRONZE SWORD, CIRCA 11TH-9TH CENTURY B.C., the slender blade with medial ridges, the domed open-work pommel drawn to a point, with ridged grip, *63.5cm long, 5.5cm wide, 5cm deep*

€800 - 1,200
£690 - 1,000
US\$950 - 1,400

Provenance:

Anonymous sale; Choppin de Javry, Drouot Richelieu, Paris, 31 May 2010, lots 169-173 (part).



52

52
EPÉE LURISTAN, BRONZE,
CIRCA XIE-IXE S. AV. J.-C.

A LURISTAN BRONZE SWORD, CIRCA 11TH-9TH CENTURY B.C., with double-eared pommel and long tapering blade, *63cm long, 8cm wide, 8cm deep*

€2,000 - 3,000
£1,700 - 2,600
US\$2,400 - 3,600

Provenance:

Anonymous sale; Choppin de Javry, Drouot Richelieu, Paris, 31 May 2010, lots 169-173 (part).



53

**53
DAGUE LURISTAN, BRONZE,
CIRCA XIE-IXE S. AV. J.-C.**

A LURISTAN BRONZE DAGGER, CIRCA 11TH-9TH CENTURY B.C., the blade with pronounced medial ridge, with crescentic openwork pommel and ribbed grip, 57cm long, 9cm wide, 6cm deep

€1,000 - 1,500
£860 - 1,300
US\$1,200 - 1,800

Provenance:

Anonymous sale; Choppin de Javry, Drouot Richelieu, Paris, 31 May 2010, lots 169-173 (part).



54

**54
EPÉE LURISTAN, BRONZE,
CIRCA XIE-IXE S. AV. J.-C.**

A LURISTAN BRONZE SWORD, CIRCA 11TH-9TH CENTURY B.C., the blade with medial ridge and crescentic guard, the waisted spool-shaped pommel and grip with incised geometric decoration, 57cm long, 5cm wide, 4cm deep

€800 - 1,200
£690 - 1,000
US\$950 - 1,400

Provenance:

Anonymous sale; Choppin de Javry, Drouot Richelieu, Paris, 31 May 2010, lots 169-173 (part).



55

**55
DAGUE LURISTAN, BRONZE,
CIRCA XIE-IXE S. AV. J.-C.**

A LURISTAN BRONZE DAGGER, CIRCA 11TH-9TH CENTURY B.C., the conical pommel with nipple finial, the blade with medial rib and crescentic guard, 47.5cm long, 6.7cm wide, 4cm deep

€1,000 - 1,500
£860 - 1,300
US\$1,200 - 1,800

Provenance:

Mrs Elias-Vaes (1908-2002) collection, Netherlands, acquired late 1960s-early 1970s. *Property from the Private Collection of the late Mrs Elias-Vaes*; Christie's, London, 29 April 2010, lot 100 (part).



56

**56
DAGUE LURISTAN, BRONZE,
CIRCA XIE-IXE S. AV. J.-C.**

A LURISTAN BRONZE DAGGER, CIRCA 11TH-9TH CENTURY B.C., with leaf-shaped blade with medial raised ribs, with open-work conical pommel, the grip with incised linear bands, *43.5cm long, 7cm wide, 4cm deep*

**€800 - 1,200
£690 - 1,000
US\$950 - 1,400**

Provenance:

with Juergen Haering, Freiburg.
Acquired from the above 4 June 2009.



57

**57
DAGUE LURISTAN, BRONZE,
CIRCA XIE-IXE S. AV. J.-C.**

A LURISTAN BRONZE DAGGER, CIRCA 11TH-9TH CENTURY B.C., with crescentic pommel, a band of incised dotted triangles beneath the characteristic hilt, *40cm long, 3cm wide, 2.5cm deep*

**€1,000 - 1,500
£860 - 1,300
US\$1,200 - 1,800**

Provenance:

Anonymous sale; Boisgirard & Associates, Paris,
16 November 2007, lot 116.



58

**58
DAGUE LURISTAN, BRONZE,
CIRCA XIE-IXE S. AV. J.-C.**

A LURISTAN BRONZE DAGGER, CIRCA 11TH-9TH CENTURY B.C., with crescentic pommel recessed on the underside for inlays, the grip decorated with raised nodules, broad hilt and tapering blade with medial ridge, *37cm long, 8.5cm wide, 5.5cm deep*

**€800 - 1,200
£690 - 1,000
US\$950 - 1,400**

Provenance:

Anonymous sale; Pierre Bergé, Paris, 17
January 2009, lot 262.



59

59

PYLOS URARTU, BRONZE, CIRCA IX-VIII S. AV. J.-C.

AN URARTIAN BRONZE HELMET, CIRCA 9TH-8TH CENTURY B.C., of domed form rising to a point, with three ribs, arched above the brow area and extending around the base of the helmet, 27cm high, 21.5cm diam.

€8,000 - 12,000

£6,900 - 10,000

US\$9,500 - 14,000

Provenance:

Private collection, Germany, acquired on the Munich art market prior to 2000.

Anonymous sale; Gorny and Mosch, Munich, 25 June 2014, lot 253.

For Urartian helmets with similar arched decoration over the forehead cf. R. Merhav (ed.) *Urartu, a metalworking centre in the first millennium B.C.E.*, The Israel Museum, Jerusalem, 1991, pp.127-130, figs. 9-11 and 13-14. A similar helmet is depicted on the facade of a tomb at Eski Dogubayazit showing a striding figure holding a sceptre and wearing a full-length garment and a helmet with arched decoration. Such arched decoration may have plain terminals or, if animal-headed, depict ram or lion heads rather than snakes.

60

CEINTURON, BRONZE, URARTU, CIRCA VIII E-VII E S. AV. J.-C.

AN URARTIAN BRONZE BELT, CIRCA 8TH-7TH CENTURY B.C., with bands of embossed dots, the ends decorated with a foliate design, with a circular attachment loop at one end, the borders pierced, 9.5cm high, 31cm diam. coiled, 127cm long uncoiled

€1,000 - 1,500

£860 - 1,300

US\$1,200 - 1,800

Provenance:

Acquired from Hermann Historica, Munich, ca. 10 years ago.



60



61

PYLOS URARTU, BRONZE, CIRCA IX-VIII S. AV. J.-C.

AN URARTIAN BRONZE HELMET, CIRCA 9TH-8TH CENTURY B.C., of domed form rising to a point, with two ribs encircling part of the base of the helmet, 26cm high, 22.5m diam.

€10,000 - 15,000

£8,600 - 13,000

US\$12,000 - 18,000

Provenance:

Private collection, Munich, acquired in New York in the 1990s.
Anonymous sale; Gorny and Mosch, Munich, 18 December 2013, lot 71.

Urartu was the Assyrian Empire's northern rival during the 9th to the 7th Centuries B.C. and conical helmets, like the above lot, were worn throughout the Near East during the same period. The pointed shape of the helmet was designed to deflect arrows in combat. Some conical helmets are ornamented with motifs in raised relief, with some further embellished with engraved scenes. Popular depictions on such helmets included raised arches curving in towards the front, each terminating in an animal head, chariot scenes, and hunts. Another well known motif on helmets is the 'lightning' symbol which refers to 'Property of the ruler'. Today the ancient region of Urartu is divided among Armenia, eastern Turkey, and northwestern Iran.

For further discussion on Urartian helmets see P. Calmeyer in R. Merhav, ed., *Urartu: a Metalworking Center in the First Millennium B.C.*, Jerusalem, 1991, pp. 123-133.



62



63

62

CROSSE DE LANCE, BRONZE, PERSAN DU NORD-OUEST, CIRCA 800-600 AV. J.-C.

A NORTH-WEST PERSIAN BRONZE SPEAR BUTT, CIRCA 800-600 B.C., tapering to a rounded end with grooved cylindrical shaft with raised knobs, pierced with two holes for attachment to shaft, raised triangles at base of square section, 35cm high, 2.5cm diam.

€800 - 1,200
£690 - 1,000
US\$950 - 1,400

Provenance:

Axel Guttman (1944-2001) collection, Berlin (AG 151d).
The Art of Warfare, the Axel Guttman Collection, Part I; Christie's, London, 6 November 2002, lot 34 (part).

For a similar spear butt see O. Muscarella, *Bronze and Iron: Ancient Near Eastern Artifacts in The Metropolitan Museum of Art*, New York, 1988, p. 392, no. 518.

63

CROSSE DE LANCE, BRONZE, PERSAN DU NORD-OUEST, CIRCA 800-600 AV. J.-C.

A NORTH-WEST PERSIAN BRONZE SPEAR BUTT, CIRCA 800-600 B.C., tapering to a rounded end with grooved cylindrical shaft with raised knobs, incised zigzag at opening, pierced with two holes for attachment to shaft, 31cm high, 2.4cm diam.

€800 - 1,200
£690 - 1,000
US\$950 - 1,400

Provenance:

Axel Guttman (1944-2001) collection, Berlin (AG 151e).
The Art of Warfare, the Axel Guttman Collection, Part I; Christie's, London, 6 November 2002, lot 34 (part).



64

64
ÉPÉE DE TYPE MÖRINGEN, BRONZE, CIRCA XIE-VIIIIE S. AV. J.-C.

A EUROPEAN BRONZE SWORD, LATE BRONZE AGE-EARLY IRON AGE, CIRCA 9TH-8TH CENTURY B.C., the blade with medial rib, the hilt with arched guard riveted to the blade, the grip ridged, the disc-shaped pommel with central knob, 61.5cm long, 5cm wide, 5cm deep

€3,000 - 5,000
£2,600 - 4,300
US\$3,600 - 5,900

Provenance:

John Woodman Higgins Armory Collection, inv. No. 2780.
Offered at Parke-Bernet Galleries Inc., New York, 17 November 1944, lot 111a.
Property Sold by Order of the Trustees of the John Woodman Higgins Armory Collection; Thomas Del Mar Ltd, in association with Sotheby's, London, 20 March 2013, lot 116.



65

65
ÉPÉE URARTIENNE, BRONZE, PROCHE-ORIENT CIRCA VIIIIE-VIIIE S. AV. J.-C.

AN URARTIAN BRONZE SWORD, CIRCA 8TH-7TH CENTURY B.C., with long slightly tapered blade, the hilt with raised geometric decoration, the grip with projecting flanges, the pommel centred with two raised domes within incised circles, blade reattached, 79cm long, 4cm wide, 3.5cm deep

€5,000 - 7,000
£4,300 - 6,000
US\$5,900 - 8,300

Provenance:

Private collection, Europe, acquired in the 1980s.
Anonymous sale; Christie's, New York, 12 December 2002, lot 299.
Private collection, Germany.
with Royal-Athena Galleries, New York.
Acquired from the above 31 January 2013.



66

66 CASQUE PSEUDO-CORINTHIEN, BRONZE, ART ITALIQUE, CIRCA FIN VIE-DÉBUT VE S. AV. J.-C.

A GREEK BRONZE PSEUDO-CORINTHIAN HELMET, MAGNA GRAECIA, CIRCA LATE 6TH CENTURY-5TH CENTURY B.C., with everted rear flange, with moulded eyebrows extending into a ridge around the crown of the head, with false eye-holes and short nose-guard, two plume holders riveted on either side of the crown, 21.5cm high, 21cm wide, 33cm deep

€10,000 - 15,000
 £8,600 - 13,000
 US\$12,000 - 18,000

Provenance:

Axel Guttman (1944-2001) collection, Berlin (AG 435/H 132), acquired in 1993 in Krefeld.

Antiquities from the Axel Guttman Collection and Other Properties; Hermann Historica, Munich, 18 April 2008, lot 317.

The Pseudo-Corinthian helmet was developed in Italy during the 6th-early 4th Centuries B.C., using the Corinthian helmet as a model. With a more decorative purpose, the Italian type was worn on top of the head, like a cap, making the functional characteristics of the eye holes and nose guard purely decorative as the eye-holes later become smaller and closer together and the separation of the cheek guards disappears. The above helmet would be considered a Type B helmet as there is a small bridge connecting the cheek pieces.



67

67 PAIRE DE JAMBIÈRES ANATOMIQUES, BRONZE, ART GREC OU ITALIQUE, CIRCA VIIIE-VE S. AV. J.-C.

A PAIR OF GREEK BRONZE GREAVES, CIRCA 7TH-5TH CENTURY B.C., naturalistically modelled covering the leg from the knee to above the ankle, with piercings to the rear for fastening, double incised lines along the edges, largest 41cm high, 9.5cm wide, 16cm deep (2)

€5,000 - 7,000
 £4,300 - 6,000
 US\$5,900 - 8,300

Provenance:

Axel Guttman (1944-2001) collection, Berlin (AG 271).

68

CASQUE PSEUDO-CORINTHIEN, BRONZE, ART ITALIQUE, CIRCA FIN VIE-DÉBUT VE S. AV. J.-C.

A GREEK BRONZE PSEUDO-CORINTHIAN HELMET, MAGNA GRAECIA, CIRCA LATE 6TH CENTURY-5TH CENTURY B.C., with false eye-holes and short nose-guard, with moulded eyebrows echoed by the arched brow, remnants of attached ornament at the crown, 17.5cm high, 21cm wide, 27cm deep

€8,000 - 12,000

£6,900 - 10,000

US\$9,500 - 14,000

Provenance:

with Akanthos Ancient Art, Antwerp.

Acquired from the above in 2011.

During the 6th-5th Centuries the Italic Peoples adapted the Corinthian helmet so that it could be worn like a cap pushed back on the head with the eye sockets and nose guard becoming decorative elements. For examples of Pseudo-Corinthian helmets cf. A. Bottini, *Antike Helme*, Mainz, 1988, pp. 99-100.



68

69

DEUX PROTÈGES CHEVILLE, BRONZE, ART GREC OU ITALIQUE, CIRCA VIE-VE S. AV. J.-C.

TWO GREEK BRONZE ANKLE GUARDS, CIRCA 6TH-5TH CENTURY B.C., each ridged at the back to protect the Achilles tendon and curved at the sides to guard the ankle, smaller: 23cm high, 13.5cm wide, 4.5cm deep; larger: 22cm high, 11.5cm wide, 13cm deep (2)

€2,000 - 3,000

£1,700 - 2,600

US\$2,400 - 3,600

Provenance:

Axel Guttman (1944-2001) collection, Berlin (AG 338/R 85).

Antiquities from the Axel Guttman Collection and Other Properties; Hermann Historica, Munich, 22 April 2009, lot 325 and 326.

There is an example of a pair of 5th Century Greek bronze ankle guards in the Metropolitan Museum of Art New York, acc. no. 1975.11.1-2. The J. Paul Getty Museum has an example of a Greek South Italian ankle guard with a double teardrop embossed on one side, similar to the present lot, and dated 400-375 B.C. (acc. no. 92.AC.7.2).



69



70

70

CASQUE CHALCIDIEN, BRONZE, CIRCA VI-IVE S. AV. J.-C.

A CHALCIDIAN BRONZE HELMET, CIRCA 6TH-4TH CENTURY B.C., with carinated edge to the crown and raised medial ridge, with inverted double 'V' shaped contour at the front, with hinged cheekpieces, now restored, 27cm high, 20cm wide, 21cm deep

€10,000 - 15,000

£8,600 - 13,000

US\$12,000 - 18,000

Provenance:

Axel Guttman (1944-2001) collection, Berlin (AG 520/H173).
Antiquities from the Axel Guttman Collection and Other Properties;
 Hermann Historica, Munich, 23 April 2009, lot 316.

There is a similar example of a Chalcidian helmet with hinged rather than fixed cheek pieces in the Metropolitan Museum of Art, acc. no. 2003.407.2. This type of helmet is named after the Chalcidian vases on which early representations of it appear.



71

71

GAMELLE / CASQUE ILLYRIEN, BRONZE, ART GREC, CIRCA VI - IVE S. AV. J.-C.

A BRONZE BOWL CONVERTED FROM A GREEK BRONZE ILLYRIAN HELMET, CIRCA 6TH-5TH CENTURY B.C., the fragmentary dome-shaped helmet converted for use as a bowl with added looped handle, the incised border preserved on the remainder of the facial opening, 19.5cm high, 20.5cm wide, 21cm deep

€2,500 - 3,500

£2,100 - 3,000

US\$3,000 - 4,200

Provenance:

Private collection, Germany, 1980s.
 Anonymous sale; Gorny and Mosch, Munich, 12 December 2012, lot 438.



72

72

CASQUE CHALCIDIEN, BRONZE, CIRCA VE-IVE S. AV. J.-C.

A CHALCIDIAN TINNED BRONZE HELMET, CIRCA 5TH-4TH CENTURY B.C., the domed crown with medial ridge, with contoured inverted 'V' shape above the brow, continuing as a rib around the helmet, with pronounced arched brow and narrow flared neck guard with hinges for cheek pieces, *now restored*, 23cm high, 19.5cm wide, 27.7cm deep

€15,000 - 20,000

£13,000 - 17,000

US\$18,000 - 24,000

Provenance:

Private collection, France, acquired in the 1980s from the French art market.
Anonymous sale; Hermann Historica, Munich, 5 August 2010, lot 2139.



73

73

CASQUE PYLOS, BRONZE, GRANDE GRÈCE, CIRCA 2EME MOITIÉ DU IVE S. AV. J.-C.

A GREEK BRONZE PILOS HELMET, MAGNA GRAECIA, CIRCA 2ND HALF OF THE 4TH CENTURY. B.C., the crown of the helmet covered with a sheet metal disc, surmounted by a cruciform finial, 27.5cm high, 22cm wide, 21cm deep

€3,000 - 5,000

£2,600 - 4,300

US\$3,600 - 5,900

Provenance:

Axel Guttman (1944-2001) collection, Berlin (AG 528/H 180), acquired in Krefeld in 1995.
Antiquities from the Axel Guttman Collection and Other Properties; Hermann Historica, Munich, 17 April 2010, lot 368.

The asymmetrical curve of this helmet suggest that it may have been converted from a Phrygian-type Greek helmet.



74

74

CASQUE PSEUDO-CORINTHIEN, BRONZE, ART ITALIQUE, CIRCA VE-IVE S. AV. J.-C.

A PSEUDO-CORINTHIAN BRONZE HELMET, CIRCA 5TH-4TH CENTURY B.C., with broad flat rear flange, the moulded eyebrows extending into a ridge around the crown, decorated with the delineation of the eyeholes and nose-guard, with confronting boars below, floral motifs behind the animals and a chevron band around the perimeter, all highlighted later in white, 17.8cm high, 21cm wide, 30cm deep

€15,000 - 25,000

£5,100 - 6,900

US\$7,100 - 9,500

Provenance:

with La Reine Margot, Paris, 1989.

Axel Guttman (1944-2001) collection, Berlin.

Axel Guttman Collection of Ancient Arms and Armour Part 2; Christie's, London, 28 April 2004, lot 104.

Published:

Sammlung Axel Guttman, Antike Helme Kalender, April 1992.

H. Born, *Restaurierung antiker Bronzewaffen: Sammlung Axel Guttman, II*, Mainz, 1993, no. XI.

M. Junkelmann, *Römische Helme: Sammlung Axel Guttman, VIII*, Mainz, 2000, p.18, pl. 5 (AG 365).

75

CASQUE PYLOS, BRONZE, GRANDE GRÈCE, CIRCA 2NDE MOITIÉ DU IVE S. AV. J.-C.

A GREEK BRONZE PILOS HELMET, MAGNA GRAECIA, CIRCA 2ND HALF OF THE 4TH CENTURY B.C., of conical form with rounded dome, an encircling rib above the broad rim, 24cm high, 19cm wide, 23cm deep

€5,000 - 7,000

£4,300 - 6,000

US\$5,900 - 8,300

Provenance:

Axel Guttman (1944-2001) collection, Berlin.

Antiquities from the Axel Guttman Collection and Other Properties; Hermann Historica, Munich, 23 April 2009, lot 328.

Such helmets were first used in Sparta at the end of the 5th Century B.C., as the Peloponnesian War drew to a close. These lighter, simpler helmets offered all-round vision, as well as being cheaper to make.



75

76

**CASQUE PYLOS, BRONZE, GRANDE GRÈCE,
CIRCA 2EME MOITIÉ DU IVE S. AV. J.-C.**

A GREEK BRONZE PILOS HELMET, MAGNA GRAECIA, CIRCA 2ND HALF OF THE 4TH CENTURY B.C., of conical form with rounded dome, an encircling rib above the broad rim, with two circular attachment holes above the rim, 20cm high, 22cm diam.

€20,000 - 30,000

£17,000 - 26,000

US\$24,000 - 36,000

Provenance:

Axel Guttman (1944-2001) collection, Berlin.
Antiquities from the Axel Guttman Collection and Other Properties;
Hermann Historica, Munich, 13 October 2010, lot 2161.

There is another similar pilos helmet in the Metropolitan Museum of Art, acc. no. 08.2.4. and there is a more elaborately decorated example in the Louvre, inventory no. Bj 2152.1. Such helmets were modelled on peasant felt caps and were sometimes decorated with bucolic scenes of herdsmen.

77

**CASQUE PYLOS À CORNES, BRONZE, GRANDE GRÈCE,
CIRCA 2EME MOITIÉ DU IVE S. AV. J.-C.**

A GREEK BRONZE HORNED PILOS HELMET, MAGNA GRAECIA, CIRCA 2ND HALF OF THE 4TH CENTURY. B.C., the domed crown covered with a sheet disc, with shortened horned attachments projecting beneath, loops for decorative attachments on front and back, 24cm high, 17cm wide, 23cm deep

€6,000 - 8,000

£5,100 - 6,900

US\$7,100 - 9,500

Provenance:

Axel Guttman (1944-2001) collection, Berlin (AG 527/H179), acquired in 1994 in Krefeld.
Antiquities from the Axel Guttman Collection and Other Properties;
Hermann Historica, Munich, 23 April 2009, lot 329.

For an example of another pilos helmet with horns cf. A. Bottini, *Antike Helme*, Mainz, 1988, p.152, fig. 2.



76



77



78

78

CASQUE PYLOS, BRONZE, GRANDE GRÈCE, CIRCA 2NDE MOITIÉ DU IVE S. AV. J.-C.

A GREEK BRONZE PILOS HELMET, MAGNA GRAECIA, CIRCA 2ND HALF OF THE 4TH CENTURY B.C., of conical form with rounded dome and carinated lip above the broad rim, 25cm high, 19.5cm wide, 23.5cm deep

€6,000 - 8,000

£5,100 - 6,900

US\$7,100 - 9,500

Provenance:

Axel Guttman (1944-2001) collection, Berlin.
Antiquities from the Axel Guttman Collection and Other Properties;
Hermann Historica, Munich, 13 October 2010, lot 2161.

Such helmets are thought to imitate the felt caps worn by herdsmen and other country folk. There is a similar pilos in the Metropolitan Museum of Art, thought to come from Sicily, acc. no. 08.2.4, and for further discussion and examples see G. Waurick, 'Helme der Hellenistischen zeit und ihre vorlaeufer' in A. Bottini, *Antike Helme*, Mainz, 1988, p.151-158.

79

CASQUE ITALIQUE, BRONZE, ART ITALIQUE, IIIE S. AV. J.-C. - ÉPOQUE ROMAINE

AN ITALIC BRONZE HELMET, CIRCA 3RD CENTURY B.C. - ROMAN PERIOD, of domed form, carinated at the base with out-turned brim, 22.5cm high, 20cm wide, 30cm deep

€3,000 - 5,000

£2,600 - 4,300

US\$3,600 - 5,900

Provenance:

Axel Guttman (1944-2001) collection, Berlin (H 339), acquired in 1991 in Krefeld.
Antiquities from the Axel Guttman Collection and Other Properties;
Hermann Historica, Munich, 18 April 2008, lot 353.



79



80

**80
CUIRASSE ANATOMIQUE, BRONZE, ART ITALIQUE,
GRANDE GRÈCE, CIRCA IVE S. AV. J.-C.**

AN ITALIC BRONZE MUSCLE CUIRASS, MAGNA GRAECIA, CIRCA 4TH CENTURY B.C., the cuirass of rectangular form with stylised musculature including abdominal muscles, pectorals and X's flanking the belly button, each plate with pierced borders, *largest 31cm high, 38.5cm wide, 5cm deep* (2)

€7,000 - 9,000
£4,300 - 6,000
US\$5,900 - 8,300

Provenance:

Private collection, England.
with J. Bagot, Barcelona, 2013.

**81
CEINTURON, SAMNITE, BRONZE, GRANDE GRÈCE,
ITALIE DU SUD, CIRCA IVE S. AV. J.-C.**

A SAMNITE BRONZE BELT, CIRCA 4TH CENTURY B.C., with pierced borders and a series of six belt holes at one end, the other end with incised bands of decoration and two solid cast attachment loops each in the form of wolf heads, *107cm long flat, 9cm high, 39.5cm wide, 37.5cm deep*

€1,500 - 2,000
£1,300 - 1,700
US\$1,800 - 2,400

Provenance:

Axel Guttman (1944-2001) collection, Berlin (R 75/AG 317), acquired in Krefeld in 1990.
Antiquities from the Axel Guttman Collection and other Properties; Hermann Historica, Munich, 11 April 2008, lot 358.



81



82

CASQUE ÉTRUSQUE, BRONZE, CIRCA IV-IIIÉ S. AV. J.-C.

AN ETRUSCAN MONTEFORTINO TYPE BRONZE HELMET, CIRCA 4TH-3RD CENTURY B.C., the domed helmet with riveted pointed attachment and flanged neck guard, with triple bossed decoration above the hinged cheek pieces, cheekpieces largely restored, 32cm high, 15cm wide, 25cm deep

€20,000 - 30,000

£17,000 - 26,000

US\$24,000 - 36,000

Provenance:

Private collection, North America.

Private collection, England.

In the collection of the Catalan Private Foundation for Iberian Archeology.

with J. Bagot, Barcelona.

Acquired from the above in 2011.

There is an example of a Montefortino helmet in the Metropolitan Museum of Art with triple boss decorated cheek-pieces, acc. no. L.2018.51. It is unusual for Montefortino helmets to survive with their cheek-pieces as they were often made of leather, an easily perishable material. This type of helmet is named after the region of Montefortino in Italy where an example was excavated in a Celtic burial. These helmets were popular amongst the Italic peoples who derived the design from Celtic helmets made of iron.



83

CASQUE ÉTRUSQUE, BRONZE, CIRCA IV-III^E S. AV. J.-C.

AN ETRUSCAN MONTEFORTINO TYPE BRONZE HELMET, CIRCA 4TH-3RD CENTURY B.C., the narrow rear peak with hatched 'rope' border extending around the helmet perimeter, bands of incised zig-zag and dotted decoration above, the sides pierced for cheek plate attachments, the crown topped by rosette finial, plume attachment at rear, 25.5cm high, 21cm wide, 27cm deep

€30,000 - 50,000

£26,000 - 43,000

US\$36,000 - 59,000

Provenance:

Doctor X collection, Kentucky, USA, 1970s-1990s.
Old private collection, USA, 2013.
G.C. collection, Paris, acquired in USA in 2014.
with La Reine Margot, Paris.

Montefortino helmets are thought to have been inspired by Celtic iron prototypes. Bronze versions were made by many Italic peoples and were particularly popular in Etruria from the 4th-2nd Centuries B.C. There is another example of an Etruscan helmet with more unusual incised decorated knob-finial in the Metropolitan Museum, acc. no. 2015.758.1, and also a scallop decorated knob on a Montefortino A type helmet in the Museo Civico Archeologico, found in the Benacci Necropolis near Bologna, Italy. Montefortino helmets were made in large quantities and used in the Republican consular armies from the 3rd-1st Century B.C. Although they normally had a plume holder on the crown of the helmet, generally little effort was made in decoration of helmets of mostly poor legionaries.

For another similarly sized helmet from Pizzighettone, also dated to the 3rd Century B.C., see Museo Ala Ponzone, inv. St 11055, Cremona, Italy.



84



85

84

CEINTURON, SAMNITE, BRONZE, GRANDE GRÈCE, ITALIE DU SUD, CIRCA IVE S. AV. J.-C.A

A SAMNITE BRONZE BELT, CIRCA 4TH CENTURY B.C., with pierced borders and a series of six belt holes at one end, the other end with two solid cast attachment loops each in the form of nude twins, the hooks at one end now missing, 75cm long, 9.5cm wide

€800 - 1,200
 £690 - 1,000
 US\$950 - 1,400

Provenance:

Axel Guttman (1944-2001) collection, Berlin (AG 639/R 307).
Antiquities from the Axel Guttman Collection and Other Properties;
 Hermann Historica, Munich, 22 April 2009, lot 350.

The nude twin motif was common in Samnite art. There is a belt with a similar twin clasp in the Metropolitan Museum of Art, acc. no. 1991.171.50. Such belts as this lot may have been made in Tarentum. These belts were worn by Italic warriors and have been found in male burials from 5th-3rd Centuries B.C. throughout central and southern Italy.

85

CEINTURON, BRONZE, GRANDE GRÈCE, ITALIE DU SUD, CIRCA VE-III E S. AV. J.-C.

A SAMNITE BRONZE BELT, CIRCA 5TH-3RD CENTURY B.C., the sheet bronze belt perforated at the edges with double attachment hooks at one end, 8cm high, 26cm diam, 88cm long uncoiled

€1,000 - 1,500
 £860 - 1,300
 US\$1,200 - 1,800

Provenance:

Axel Guttman (1944-2001) collection, Berlin (R 26/AG 126), acquired in Krefeld in 1990.
Antiquities from the Axel Guttman Collection and Other Properties;
 Hermann Historica, Munich, 11 April 2008, lot 357.

86

**CASQUE DE TYPE "LATE CELTIC",
CIRCA FIN DU 1ER S. AV. J.-C.**

A LATE CELTIC BRONZE HELMET, CIRCA LATE 1ST CENTURY B.C., of flattened domed form with a short encircling brim, two raised parallel ribs at the back and moulded extended brows at the front, 14.5cm high, 21.5cm wide, 25cm deep

€10,000 - 15,000

£8,600 - 13,000

US\$12,000 - 18,000

Provenance:

Axel Guttman (1944-2001) collection, Berlin.
Antiquities from the Axel Guttman Collection and Other Properties;
Hermann Historica, Munich, 13 October 2010, lot 2190.

With its hemispherical form, the above helmet is a modification of the Montefortino type helmet and also shares some of the characteristic of the 1st Century A.D. Imperial Gallic helmets which have the same distinct embossed eye-brows and horizontal ribs above the neck area.



86

87

**ÉPÉE CELTE ET SON FOURREAU,
FER, LA TÈNE MOYENNE,
CIRCA IIIE-III S. AV. J.-C.**

A CELTIC IRON SWORD WITH PARTIAL SCABBARD, MIDDLE LA TÈNE PERIOD, CIRCA 3RD-2ND CENTURY B.C., the long blade with straight edges tapering to a point, with slender arched guard and elongated grip, together with the back section of a scabbard (in two parts), the point reinforced with a frame, with belt attachment riveted to the upper portion, sword: 95.5cm long, 5.5cm wide; scabbard: 83cm long, 5.5cm wide (2)

€2,000 - 3,000

£1,700 - 2,600

US\$2,400 - 3,600

Provenance:

Axel Guttman (1944-2001) collection, Berlin (AG 89/W 58), acquired in Munich in 1986.
Antiquities from the Axel Guttman Collection and Other Properties;
Hermann Historica, Munich, 18 April 2008, lot 285.



87

88

TRÈS GRANDE POINTE DE LANCE, FER, CELTE, CIRCA IIIE-III S. AV. J.-C.

A VERY LARGE CELTIC IRON SPEARHEAD, CIRCA 3RD-2ND CENTURY B.C., the leaf-shaped blade with raised medial rib, 82cm high, 9.5cm wide, 2cm deep

€2,000 - 3,000

£1,700 - 2,600

US\$2,400 - 3,600

Provenance:

Axel Guttman (1944-2001) collection, Berlin.
Antiquities from the Axel Guttman Collection and other Properties;
Hermann Historica, Munich, 17 April 2010, lot 285.



88



detail lot 89



89

89
SIÈGE MILITAIRE PLIANT, SELLA CASTRENSIS, FER, ART ROMAIN, CIRCA IIE-IIIIE S. AP. J.-C.

A ROMAN IRON MILITARY STOOL, CIRCA 2ND-3RD CENTURY A.D., of 'X' shaped folding form, the frame with silvered-bronze inlaid cross-hatched decoration, with modern leather seat, 48cm high, 39cm wide, 38cm deep

€6,000 - 8,000
 £5,100 - 6,900
 US\$7,100 - 9,500

Provenance:

Axel Guttman (1944-2001) collection, Berlin.
Antiquities from the Axel Guttman Collection and Other Properties;
 Hermann Historica, Munich, 8 October 2008, lot 14.

Folding bronze stools, like those offered for sale in this auction, were known as an ancient symbol of military power and are depicted across multiple forms of visual art such as sculptural reliefs, sarcophagus fragments and coins. An early example of the stool can be seen on a silver denarius from the British Museum (acc. no. 1860,0602.139), minted between 15-13 B.C., with the reverse showing Augustus seated on a folding stool receiving olive branches from soldiers. Another silver denarius (British Museum acc. no. 1860,0330.33) depicts Constantia seated on a folding stool.



90

90
SIÈGE MILITAIRE PLIANT, SELLA CASTRENSIS, FER ET BRONZE, ART ROMAIN, CIRCA IIE-IIIIE S. AP. J.-C.

A ROMAN IRON AND BRONZE MILITARY STOOL, CIRCA 2ND-3RD CENTURY A.D., of 'X' shaped folding form, the seat rails and frame with lozenge and lattice geometric decoration inlaid with bronze, with modern leather seat, 50cm high, 37cm wide, 38cm deep

€5,000 - 7,000
 £4,300 - 6,000
 US\$5,900 - 8,300

Provenance:

Private collection, Vienna, acquired in the 1980s from the art market.
 Anonymous sale; Hermann Historica, Munich, 5 August 2014, lot 2156.



detail lot 91



91

91
SIÈGE MILITAIRE PLIANT, SELLA CASTRENSIS, FER, ART ROMAIN, CIRCA IIE-IIIIE S. AP. J.-C.

A ROMAN IRON AND BRONZE MILITARY STOOL, CIRCA 2ND-3RD CENTURY A.D., of 'X' shaped folding form, with modern leather seat, one of the seat rails with geometric silvered-bronze inlay, 48.5cm high, 41cm wide, 39cm deep

€6,000 - 8,000
 £5,100 - 6,900
 US\$7,100 - 9,500

Provenance:

Anonymous sale; Hermann Historica, Munich, 18 April 2008, lot 47.



92

92
SIÈGE MILITAIRE PLIANT, SELLA CASTRENSIS, FER ET BRONZE, ART ROMAIN, CIRCA IIE-IIIIE S. AP. J.-C.

A ROMAN IRON AND BRONZE MILITARY STOOL, CIRCA 2ND-3RD CENTURY A.D., the iron 'X' shaped folding frame decorated with five bronze lion head finials at the corners of the seat rails and also at the centre of each of the 'X' shaped hinges (one missing), with two dome shaped finials on the interior ends of the seat rails, 46cm high, 38cm wide, 53cm deep

€5,000 - 7,000
 £4,300 - 6,000
 US\$5,900 - 8,300

Provenance:

Th. B. collection, South Germany.
 Anonymous sale; Gorny and Mosch, Munich, 19 June 2009, lot 460.

Egypte



93



94

93 Y Φ

CLAPPER FRAGMENTAIRE, IVOIRE, ÉGYPTE, MOYEN EMPIRE, XII DYNASTIE, CIRCA 1985-1773 AV. J.-C.

AN EGYPTIAN IVORY HAND FROM A CLAPPER, MIDDLE KINGDOM, 12TH DYNASTY, CIRCA 1985-1773 B.C., the slender hand with elongated fingers, the nails detailed, wearing a bracelet with dotted circles above, 4.7cm high, 14.5cm wide, 1cm deep

€1,500 - 2,000

£1,300 - 1,700

US\$1,800 - 2,400

Provenance:

A.O. collection, the Netherlands, acquired by the owner's grandfather in Cairo ca. 1940.

with Charles Ede Ltd., London.

Acquired from the above 17 March 2014.

Music was an integral part of Egyptian religious worship, and rituals for the dead, and temples boasted their own troops of musicians. Clappers such as this lot are thought to have replaced the ritualistic handclapping of worshippers, and most examples are in the form of arms and hands, made of ivory or wood. 'The musician sometimes held one clapper in each hand and then beat them together vigorously. Sometimes they were placed in pairs between the fingers of the same hand or they might be joined by means of a small tie and suspended from the wrist.' (*Egypt's Golden Age: The Art of Living in the New Kingdom 1558-1085 B.C.*, Boston, 1982, pp. 261-2 nos 368-369).

For a clapper with similar bracelet, see the Metropolitan Museum, New York, acc. no.22.1.152. The curvature of this piece and the Met example follows the curved shape of the ivory tusk from which it was carved.

94 Y Φ

CLAPPER, IVOIRE, ÉGYPTE, MOYEN EMPIRE, XII DYNASTIE, CIRCA 1985-1773 AV. J.-C.

AN EGYPTIAN IVORY CLAPPER, MIDDLE KINGDOM, 12TH DYNASTY, CIRCA 1985-1773 B.C., the slender hand with elongated fingers, wearing bracelets, linear bands at the fingers, suspension hole at the base, old collection label on reverse, 3.5cm high, 18.2cm wide, 1cm deep

€1,500 - 2,000

£1,300 - 1,700

US\$1,800 - 2,400

Provenance:

Jim Akers collection.

Anonymous sale; Ancient Resource Auctions, Glendale CA., 4 May 2014, lot 93.

For a similar clapper see the Metropolitan Museum of Art, New York, acc. no. 11.151.622, and 32.5.2a, b for a similarly-scaled pair of clappers; the latter were discovered in a miniature coffin at Amarna and seem to have been part of an offering.

95

**MIROIR, BRONZE, ÉGYPTE, NOUVEL EMPIRE,
CIRCA 1550-1069 AV. J.-C.**

AN EGYPTIAN BRONZE MIRROR, NEW KINGDOM, CIRCA 1550-1069 B.C., the columnar handle terminating in the falcon-headed Horus, with characteristic facial markings and wearing a broad collar, with a separately cast disk, reattached, 29cm high, 12cm wide, 4.5cm deep

€10,000 - 15,000

£8,600 - 13,000

US\$12,000 - 18,000

Provenance:

Reputedly Mrs Elias-Vaes (1908-2002) collection, Netherlands, acquired late 1960s-early 1970s.
with Galerie Mythes et Légendes, Paris.

Figurative mirror handles became popular in the New Kingdom. There are several mirror handles decorated with Horus falcons in The Metropolitan Museum of Art, New York, acc. nos. 26.2.18; 30.8.112; 26.7.835a, b. For a similar depiction of a falcon-headed Horus attachment see the Metropolitan Museum of Art, New York, acc. no. 10.130.1325.





96

96
**CUILLÈRE À COSMÉTIQUE, BOIS, ÉGYPTE, NOUVEL
 EMPIRE À BASSE ÉPOQUE, CIRCA 1550-525 AV. J.-C.**

AN EGYPTIAN WOODEN COSMETIC SPOON, NEW KINGDOM-LATE PERIOD, CIRCA 1550-525 B.C., in the form of a swimming woman, with separately carved arms and head, her arms outstretched holding a circular offering dish, 45cm long, 7cm wide, 7.5cm high

€8,000 - 12,000
 £6,900 - 10,000
 US\$9,500 - 14,000

Provenance:

Private collection, France, 19th Century.
 Anonymous sale; Sotheby's, New York, 13 June 2002, lot 224.
 Dutch art market.
 Anonymous sale; Bonhams, London, 28 April 2010, lot 43.

Swimming girl figure spoons, such as the above lot, though most commonly found in tombs, have also been excavated in private residences and palaces. Examples exist in other materials such as ivory, alabaster, stone and even faience. Discussions in Kozloff and Bryan, *Egypt's Dazzling Sun, Amenhotep III and His World*, Cleveland, 1992, pp. 331-335 suggest the spoons can be interpreted as rebuses pertaining to the afterlife. These figures usually hold waterfowl, typically geese whose hieroglyph can be read as *geb*, the earth god known by his nickname 'the great honker'. In this light, the swimmer now transforms into Geb's wife the sky goddess Nut, with the two swimming through the eternal waters together in the afterlife.



97

97
**ASSIETTE À FARD ZOOMORPHE, OS, ÉGYPTE, NOUVEL
 EMPIRE, CIRCA 1550-1069 AV. J.-C.**

AN EGYPTIAN BONE DUCK COSMETIC DISH, NEW KINGDOM, CIRCA 1550-1069 B.C., the neck curved around the rim, with trussed legs, 8.5cm long, 4.6cm wide, 1.5cm deep

€800 - 1,200
 £690 - 1,000
 US\$950 - 1,400

Provenance:

Acquired from a French auction house, at least 10 years ago.

Cf. a similar dish in wood at the Louvre, Paris, numero principal N 1749, and one in ivory at the Pushkin State Museum of Fine Arts, Moscow, inv. no. I.1.a 3624, both dating to the New Kingdom.



98

98
**PARURE DE SARCOPHAGE, PLASTRON OUSEKH,
 ARGENT, ÉGYTPE, NOUVEL EMPIRE À BASSE
 ÉPOQUE, CIRCA 1550-332 AV. J.-C.**

AN EGYPTIAN SHEET SILVER BROAD COLLAR,
 SARCOPHAGUS ELEMENT, NEW KINGDOM-LATE PERIOD,
 CIRCA 1550-332 B.C., the repoussé decoration composed of
 seven tiers of beads of various types including droplet, lotus
 flower and tubular forms, *20cm high, 35.5cm long*

€5,000 - 7,000
 £4,300 - 6,000
 US\$5,900 - 8,300

Provenance:

Anonymous sale; Tajan, Paris, 29 October 2008, lot 187.
 with Galerie Samarcande.

Acquired from the above 14 June 2009.

Broad collars such as the above lot were traditionally used to
 adorn mummies. There is another example of a sheet gold
 collar of similar proportions, dating to the New Kingdom, in
 the Metropolitan Museum of Art, New York, acc. no. 26.8.102.

99
**OUSHEBTI, FAÏENCE SILICEUSE, ÉGYTPE,
 IIIE PÉRIODE INTERMÉDIAIRE, XXI DYNASTIE,
 CIRCA 1069-945 AV. J.-C.**

AN EGYPTIAN BRIGHT BLUE FAÏENCE SHABTI, THIRD
 INTERMEDIATE PERIOD, 21ST DYNASTY, CIRCA 1069-945
 B.C., depicted mummiform, with details in black including
 the striped wig, pair of hoes, and seed bag at his back, the
 body with eight columns of hieroglyphic text, largely indistinct,
15cm high, 5.5cm wide, 4.5cm deep

€1,000 - 1,500
 £860 - 1,300
 US\$1,200 - 1,800

Provenance:

Acquired from La Reine Margot, Paris.



99



100

**SARCOPHAGE, BOIS BITUMÉ, ÉGYPTE,
III^E PÉRIODE INTERMÉDIAIRE, PÉRIODE LIBYENNE,
CIRCA 945-664 AV. J.-C.**

AN EGYPTIAN WOOD COFFIN, THIRD INTERMEDIATE PERIOD, LIBYAN PERIOD, 22ND-BEGINNING OF 25TH DYNASTY, CIRCA 945-664 B.C., the lid with naturalistically carved face, wearing a striped wig and broad collar, details in added ochre, the interior of the coffin base decorated with the standing figure of Nut, her outstretched arms in a protective embrace, continuing onto the side panels, with rows of unintelligible hieroglyphic text on each of the short sides, with traces of bitumen and remains of pigment overall, 186cm high, 52cm wide, 50cm deep

€30,000 - 50,000

£17,000 - 26,000

US\$24,000 - 36,000

Provenance:

Erik Sidemark (1918-2008) collection, stationed in Cairo between 1951 and 1955.

Anonymous sale; Pierre Bergé, Paris, 29 November 2014, lot 70.

Although the goddess Nut had long been associated with the protection of the whole of the coffin it was not until the Libyan Period that the iconography of Nut shown on the interior floor of the coffin depicted in a protective embrace is first seen, along with the distinctive yellow text on a black ground. For a similar coffin showing the interior of a sarcophagus with Nut cf. O. Koefoed-Petersen *Catalogue des sarcophages et cercueils égyptiens*, Glyptothèque Ny Carlsberg, Copenhagen 1951, pl. CII. John Taylor also discusses Libyan Period coffins with Nut iconography, *Egyptian Coffins*, The British Museum, 1989, pp. 51-52, ill. 41.





101

**SARCOPHAGE, BOIS BITUMÉ ET PIGMENTS
POLYCHROMES, ÉGYPTE, IIIE PÉRIODE INTERMÉDIAIRE-
XXVI DYNASTIE, CIRCA 1069-525 AV. J.-C.**

AN EGYPTIAN PAINTED WOOD COFFIN, THIRD INTERMEDIATE PERIOD-26TH DYNASTY, CIRCA 1069-525 B.C., of typical anthropomorphic form, the large eyes outlined in black, wearing a striped tripartite wig and elaborate broad beaded collar, below which kneels the winged goddess Nut, with two wedjat eyes and a ram-headed deity above, two central vertical columns of text mostly unintelligible, the name of the owner appearing to read: 'Men Son of Men', the mother's name lost, the text flanked by panels containing the Sons of Horus and other funerary deities, details painted in red, black, green and ochre, the exterior of the coffin base decorated with a standing winged goddess, 170cm high, 60cm wide, 47cm deep

€25,000 - 30,000

£17,000 - 26,000

US\$24,000 - 36,000

Provenance:

Private collection, Paris.

Private collection, Texas.

Acquired from Artemis Gallery, Colorado, 2014.





102

102
PARTIE SUPÉRIEURE DE COUVERCLE ANTHROPOMORPHE DE SARCOPHAGE, BOIS, ÉGYPTE, ÉPOQUE PTOLÉMAÏQUE, CIRCA 332-30 AV. J.-C.

AN EGYPTIAN PAINTED WOOD UPPER PART OF AN ANTHROPOID COFFIN LID, PTOLEMAIC PERIOD, CIRCA 332-30 B.C., the gesso painted lid depicting the deceased wearing a striped wig and a beaded broad collar with falcon head terminals, a winged scarab below, details painted in black, yellow and red on a white ground, 106.5cm high, 44cm wide, 28cm deep

€3,000 - 5,000
 £2,600 - 4,300
 US\$3,600 - 5,900

Provenance:
 Swiss art market, 1997.
 Anonymous sale; Gorny and Mosch, Munich, 24 June 2008, lot 399.

103
DIEU OSIRIS, BOIS, ÉGYPTE, BASSE ÉPOQUE, CIRCA 664-332 AV. J.-C.

AN EGYPTIAN WOOD FIGURE OF OSIRIS, LATE PERIOD, CIRCA 664-332 B.C., the mummiform figure wearing the White Crown of Upper Egypt, hands clasped across his chest, with traces of stucco, 47cm high incl. tenon, 12cm wide, 8cm deep

€1,000 - 1,500
 £860 - 1,300
 US\$1,200 - 1,800

Provenance:
 Private collection Germany, since 1960.
 A. Offermann collection, Cologne, acquired at a Solingen auction house in the 1990s.
 Anonymous sale; Gorny and Mosch, Munich, 30 June 2017, lot 470.



103

104

**GRANDE STATUETTE DU DIEU OSIRIS, BRONZE, ÉGYPTE,
BASSE EPOQUE, CIRCA 664-332 AV. J.-C.**

A LARGE EGYPTIAN BRONZE OSIRIS, LATE PERIOD, CIRCA 664-332 B.C., the god standing depicted mummiform, wearing a plaited false beard and atef crown with uraeus and rams horns, holding the crook and flail, 37cm high, 10cm wide, 6.5cm deep

€20,000 - 30,000

£17,000 - 26,000

US\$24,000 - 36,000

Provenance:

Private collection, Paris, 1960s.

Anonymous sale; Pierre Bergé, Paris, 15 December 2009, lot 183.

Such figures of Osiris, although usually not as large as the above lot, were made in profuse quantities during the Late Period, reflecting the importance and popularity of the god as the ruler and judge of the underworld as well as his connection to fertility and regeneration. The figures served as votive offerings and have frequently been found in temples dedicated to the god, as well as in other unrelated offering contexts.

Two other examples of an Osiris figure of similar impressive proportions are in the Metropolitan Museum of Art, New York, acc. no. 61.45 and the Louvre, Paris, Numéro principal : N 5152 A.





105

105

SELKIS : DÉESSE SCORPION, BRONZE, ÉGYPTE, BASSE ÉPOQUE, CIRCA 664-332 AV. J.-C.

AN UNUSUAL EGYPTIAN BRONZE AMULET OF SELKIS, LATE PERIOD, CIRCA 664-332 B.C., the human-headed goddess in the form of a scorpion, wearing a sun disk between cows horns, attachment loop at the back of the head, 3.8cm high, 3cm wide, 8.3cm deep

€2,000 - 3,000

£1,700 - 2,600

US\$2,400 - 3,600

Provenance:

Private collection, France.
with Arteas Ltd, Paris.
Acquired from the above 11 June 2009.

Selkis was worshipped as a goddess of medicine, protection and, most importantly, healer of venomous stings and bites through her association with scorpions. As bites and stings could prove fatal in ancient Egypt, the goddess also became associated with the underworld and the dead. Her name is commonly invoked to protect the embalmed remains of intestines stored in the canopic jar representing Falcon-headed Qebehsenuef.

For a similar depiction of the goddess as a scorpion see an example in the Louvre, Paris, acc. no. N 5017. She is more usually represented in human form with a scorpion headdress, as seen in the various lapis Selkis amulets in the British Museum, for example acc. no. EA60375.

106

DIEU HORUS : FAUCON, BRONZE, ÉGYPTE, BASSE ÉPOQUE, CIRCA 664-332 AV. J.-C.

AN EGYPTIAN BRONZE HORUS FALCON, LATE PERIOD, CIRCA 664-332 B.C., wearing the double crown of Upper and Lower Egypt, the feathers incised, the face with characteristic markings, 12.4cm high, 3cm wide, 7cm deep

€2,000 - 3,000

£1,700 - 2,600

US\$2,400 - 3,600

Provenance:

Private collection, the Boulonnais, acquired in the 1980s.
Entière collection de Monsieur B. Partie 1; Delorme & Collin du Bocage, Paris, 24 February 2010, lot 48.



106



107

SARCOPHAGE DE CHAT, BRONZE, ÉGYPTE, BASSE EPOQUE À EPOQUE PTOLÉMAÏQUE, CIRCA 664-30 AV. J.-C

AN EGYPTIAN BRONZE CAT, LATE PERIOD-PTOLEMAIC PERIOD, CIRCA 664-30 B.C., naturalistically modelled, seated with its forepaws together, tail curving forward and extending beyond the forepaws, the face with leonine features and incised curling whiskers, wearing an incised broad collar with central wedjat-eye plaque, 22.5cm high, 6.5cm wide, 16cm deep

€10,000 - 15,000
 £8,600 - 13,000
 US\$12,000 - 18,000

Provenance:

Private collection, mounted on an old base.
 Anonymous sale; Pierre Bergé, Paris, 21 May 2014, lot 55.

Due to its size, which may not have been big enough to hold a mummified kitten, the above lot may have originally sat atop either a wood or a bronze coffin which would have contained a mummified cat. In the mortal world cats were viewed as protectors of households and granaries against rodents; tomb scenes show that they were considered to be pets, as they frequently appear seated beneath the chairs of their owners. In the spiritual world, cats were associated with the goddess Bastet. As such cats were honoured both as domestic companions and as sacred animals, and were known to be kept and buried within the precincts of temples of Bastet, particularly at Bubastis in Lower Egypt. For a further discussion of the significance of cats cf. *Mummies and Magic*, Museum of Fine Arts Boston, 1988, pp. 232-234.

108

**DIEU OSIRIS, BRONZE, ÉGYPTE, BASSE EPOQUE,
CIRCA 664-332 AV. J.-C.**

AN EGYPTIAN BRONZE OSIRIS, LATE PERIOD, CIRCA 664-332 B.C., the god depicted mummiform, holding the crook and flail, wearing a false beard and hemhem crown with uraeus and rams horns, *15.5cm high, 5cm wide, 3cm deep*

€1,500 - 2,000
£1,300 - 1,700
US\$1,800 - 2,400

Provenance:

Anonymous sale; Millon, Paris, 26 May 2009, lot 100.



108

109

**DIEU NEFERTOUM, BRONZE, ÉGYPTE, BASSE EPOQUE,
CIRCA 664-332 AV. J.-C.**

A LARGE EGYPTIAN BRONZE AMULET OF NEFERTUM, LATE PERIOD, CIRCA 664-332 B.C., striding forth wearing the lotus crown, incised wig, false beard and kilt, suspension loop at the back, *13cm high, 3.4cm wide, 3.5cm deep*

€1,000 - 1,500
£860 - 1,300
US\$1,200 - 1,800

Provenance:

Acquired from a French auction house, at least 10 years ago.



109

110

**DIEU PTAH, BRONZE, ÉGYPTE, BASSE EPOQUE,
CIRCA 664-332 AV. J.-C.**

AN EGYPTIAN BRONZE PTAH, LATE PERIOD, CIRCA 664-332 B.C., depicted mummiform, wrapped in a shroud-like garment, wearing a skull cap, false beard and broad collar, the counterpoise incised at his back, with hands clasping the was-sceptre, 16.5cm high, 5.5cm wide, 3.5cm deep

€2,000 - 3,000
£1,700 - 2,600
US\$2,400 - 3,600

Provenance:

with La Reine Margot, Paris.
Acquired from the above 10 October 2012.

111

**DIEU AMON, BRONZE, ÉGYPTE, BASSE EPOQUE,
CIRCA 664-332 AV. J.-C.**

AN EGYPTIAN BRONZE AMUN, LATE PERIOD, CIRCA 664-332 B.C., the god striding forth on his proper left leg, wearing a short kilt, beaded broad collar, false beard, and typical headdress, 14.5cm high, 3.6cm wide, 6cm deep

€2,000 - 3,000
£1,700 - 2,600
US\$2,400 - 3,600

Provenance:

Dr John S. Winnie collection, Georgia, USA, prior to 1983.
Anonymous sale; Pierre Bergé, Paris, 15 December 2009, lot 200.



110



111



112

112
**RÈ ORAKTI, BRONZE, ÉGYPTE, BASSE EPOQUE,
 CIRCA 664-332 AV. J.-C.**

AN EGYPTIAN BRONZE AMULET OF RE-HORAKTY, LATE PERIOD, CIRCA 664-332 B.C., the falcon-headed deity wearing a sun disc with frontal uraeus and short pleated kilt, *7.2cm high, 1.7cm wide, 2.2cm deep*

€1,500 - 2,000
 £1,300 - 1,700
 US\$1,800 - 2,400

Provenance:

Madame M. collection, France, acquired in the 1960s, probably from Mariane Maspero.
 with Royal-Athena Galleries, New York.
 Acquired from the above March 2014.



113

113
**DIEU AMON, BRONZE, ÉGYPTE, BASSE EPOQUE,
 CIRCA 664-332 AV. J.-C.**

AN EGYPTIAN BRONZE STRIDING AMUN, LATE PERIOD, CIRCA 664-332 B.C., the solid cast deity wearing a false beard, broad bead collar, short kilt, and typical headdress, the plumes now missing, striding forth with his proper left leg, *13.2cm high, 3.8cm wide, 3.5cm deep*

€2,500 - 3,500
 £2,100 - 3,000
 US\$3,000 - 4,200

Provenance:

Acquired from La Reine Margot, Paris.



114

**BUSTE DE STATUE DE DIGNITAIRE, GRANITE, ÉGYPTE,
MEMPHIS, CIRCA XXVIIÉ-DÉBUT DE LA XXVIIIÉ DYNASTIE,
CIRCA 664-500 AV. J.-C.**

AN EGYPTIAN GRANITE BUST OF AN OFFICIAL, LATE PERIOD,
CIRCA 26TH DYNASTY-EARLY 27TH DYNASTY, CIRCA 664-500
B.C., probably the upper portion of a naophorous statue, wearing a
smooth bag wig and a long kilt knotted beneath the pectorals the back
pillar engraved with two columns of largely illegible text, 25cm high,
15cm wide, 11.5cm deep

€7,000 - 9,000

£4,300 - 6,000

US\$5,900 - 8,300

Provenance:

*Vente Volontaire d'Objets d'Archeologie de la Galerie Samarcande,
depuis 1973; Drouot Richelieu, Paris, 7-8 October 1996, lot 324.*

Private collection, the Boulonnais.

*Entière collection de Monsieur B. Partie; Delorme & Collin du Bocage,
Paris, 24 February 2010, lot 58.*

For another 26th Dynasty naophorous schist statue of an official also
depicted wearing a smooth shoulder length bag wig, popular in the
26th Dynasty and a garment knotted high on the chest cf. The British
Museum, London, acc. no. EA41517.



115

GRAND STATUETTE DE ISIS LACTANS, BRONZE, ÉGYPTE, BASSE ÉPOQUE, CIRCA 664-332 AV. J.-C.

A LARGE EGYPTIAN BRONZE FIGURE OF ISIS AND HORUS, LATE PERIOD, CIRCA 664-332 B.C., solid cast, the seated goddess wearing a tripartite wig with vulture headdress surmounted by a crown of uraei, and a close-fitting dress, broad collar and armlets, depicted nursing the infant Horus, seated on her lap, largely missing, 35cm high, 9cm wide, 10.5cm deep

€10,000 - 15,000

£8,600 - 13,000

US\$12,000 - 18,000

Provenance:

Anonymous sale; Tajan, Paris, 8 February 2008, lot 167.

Isis and her husband Osiris were two of the most popular deities worshiped in Egypt. As a consequence of being so popular, she took on attributes from other lesser goddesses, one of which can be seen in this statue, where Isis wears the sun crown typically associated with the goddess Hathor. She was appropriated by the Greeks when they came to Egypt who disseminated her cult throughout the Mediterranean.

Isis nursing the infant Horus was a common Late Period depiction of the goddess. For more examples of the type see the Louvre, Paris, Numéro principal: AF 240; E 4306 and E 4306.



detail lot 116

116

GRAND STATUETTE DIEU OSIRIS, BRONZE, ÉGYPTE, BASSE ÉPOQUE, CIRCA 664-332 AV. J.-C.

A LARGE EGYPTIAN BRONZE OSIRIS, LATE PERIOD, CIRCA 664-332 B.C., the deity depicted mummiform holding a crook and flail, wearing a plaited false beard, broad collar and atef crown with rams horns and a frontal uraeus, the base inscribed on all four sides, the large hieroglyphs naming the god Osiris and appearing to ask for the usual benefits on the behalf of the deceased, whose name is unclear, traces of gilding on the eyes, 36cm high, 12cm wide, 5.5cm deep

€15,000 - 20,000

£13,000 - 17,000

US\$18,000 - 24,000

Provenance:

with Galerie Francois Antonovich, Paris.

Acquired from the above 10 September 2007.

Osiris was considered the most important of Egypt's funerary gods and ruler of the Underworld. From the 1st Millennium B.C. onwards large quantities of statuettes of Osiris were made as votive offerings in temples and shrines dedicated to Osiris. In the Late and Ptolemaic periods the development of casting techniques made it possible for votive figures of gods to be offered by private individuals. The quality and significant size of the above figure suggest that it would have been an offering of a notable individual such as a priest, official, or as a collective gift from a city or town. For another slightly larger example of a finely cast votive bronze figure of Osiris see the Metropolitan Museum of Art, New York, acc. no. 61.45.





117

117

GRAND BOUCHON DE VASE CANOPE DE DOUAMOUTEF, CALCAIRE, ÉGYPTE, BASSE EPOQUE, CIRCA 664-332 AV. J.-C.

A LARGE EGYPTIAN LIMESTONE CANOPIC JAR LID, LATE PERIOD, CIRCA 664-332 B.C., in the form of jackal-headed Duamutef, with pointed ears and pronounced slender snout, the narrowed eyes outlined in black, with his name inscribed below the muzzle, highlighted in blue pigment, 16cm high, 15cm wide, 18cm deep

€7,000 - 10,000

£6,000 - 8,600

US\$8,300 - 12,000

Provenance:

Private collection, France, acquired between 1970-1980. Anonymous sale; Pierre Bergé, Paris, 21 May 2014, lot 39.

Canopic jars were used to store the internal organs removed from the body of the deceased during the process of mummification. The jars came in sets of four, each designated for one of the vital organs: liver, lungs, stomach, intestines. From the 18th Dynasty onwards canopic jar lids were often in the form of the Four Sons of Horus, with each god being the protective deity of the contents of their respective jar. Each Son of Horus was also protected by a funerary goddess. Jackal-headed Duamutef presided over the canopic jar which held the stomach of the deceased, and was protected by Neith.



118

118

TÊTE DE CHATTE, BRONZE, ÉGYPTE, BASSE EPOQUE, CIRCA 664-332 AV. J.-C.

AN EGYPTIAN BRONZE HEAD OF A CAT, LATE PERIOD, CIRCA 664-332 B.C., the hollow cast head with alert ears, large eyes and incised whiskers, 5cm high, 4cm wide, 4.5cm deep

€2,000 - 3,000

£1,700 - 2,600

US\$2,400 - 3,600

Provenance:

Private collection, USA, acquired by the family in the 1950s; and thence by descent.

Anonymous sale; Bonhams, London, 28 April 2010, lot 58.



119

ÉTENDARD AUX POISSON OXYRHYNQUE, BRONZE, ÉGYPTE, BASSE ÉPOQUE À ÉPOQUE PTOLÉMAÏQUE, CIRCA 664-30 AV. J.-C.

AN EGYPTIAN BRONZE OXYRHYNCHUS FISH STANDARD FINIAL, LATE PERIOD-PTOLEMAIC PERIOD, CIRCA 664-30 B.C., in the form of a lotus flower, inlaid with lapis lazuli, carnelian and turquoise, surmounted by an oxyrhynchus fish, details incised, wearing a horned sun-disk crown with frontal ureaus, flanked by standing figures of Isis and Nephthys, 22.5cm high, 10.5cm wide, 7cm deep

€15,000 - 20,000

£13,000 - 17,000

US\$18,000 - 24,000

Provenance:

Private collection, France, acquired at the start of the 1980s.
Anonymous sale; Tessier Sarrou & Associates, Paris, 27 November 2013, lot 66.

For another lotus standard (now lacking inlays) of similar proportions, see the Louvre, Paris, Autre numéro d'inventaire: ME 299 Numéro dépositaire: D. 07.1.2. See also a depiction of Harpocrates(?) seated in a lotus flower, the Louvre, Paris, Numéro principal: E 4648.

The oxyrhynchus fish was the most revered of Egyptian fish and it was believed to have swallowed the phallus of the dismembered Osiris. It was worshipped at the Behnesa and was associated with the god Seth. For a discussion on the significance of the oxyrhynchus cf. *Mummies and Magic*, Museum of Fine Arts, Boston, 1988, p.244.

The lotus, more commonly known as a water lily, was a well known plant and also served as the symbol of Upper Egypt. The flower, which is either blue or white, closes up at night and reopens in the morning. To the ancient Egyptians this phenomenon reflected the rising of the sun at the dawn of creation, and the flower was honoured as an image of daily rebirth and rejuvenation.



120

120

GRAND FRAGMENT DE COUVERCLE DE SARCOPHAGE, BOIS, ÉGYPTE, BASSE ÉPOQUE, CIRCA 664-343 AV. J.-C.

A LARGE EGYPTIAN POLYCHROME WOOD COFFIN FRAGMENT, LATE PERIOD, CIRCA 664-343 B.C., with the beginning of three columns of text naming the mother of the deceased, Neb-Dematy-Ihy, the flanking figures of the Four Sons of Horus looking outwards towards the front of the coffin facing descriptive text in a semi-cursive hand, details painted in black, blue, red and yellow, 57.5cm high, 73cm wide, 17cm deep

€1,500 - 2,000
 £1,300 - 1,700
 US\$1,800 - 2,400

Provenance:

H. N. collection, France, acquired in 2001 from Boscher auction house, Auxerre.

A. Aspa collection, France.

Acquired from the above in 2012.

The deceased mother's name, Neb-Dematy-Ihy, although unattested, translates as 'The Lord of the Wings rejoices'.

121

GRAND MASQUE DE SARCOPHAGE, BOIS, ÉGYPTE, ÉPOQUE PTOLÉMAÏQUE, CIRCA 332-30 AV. J.-C.

A LARGE EGYPTIAN POLYCHROME WOOD MUMMY MASK, PTOLEMAIC PERIOD, CIRCA 332-30 B.C., the flesh in pink, with eyes and extended cosmetic lines and brows outlined in black, the remains of a scarab on the top of the wig, 38cm high, 37cm wide, 15cm deep

€2,000 - 3,000
 £1,700 - 2,600
 US\$2,400 - 3,600

Provenance:

Anonymous sale; Arte Primitivo, New York, 21 March 2005, lot 172.

Anonymous sale; Gorny and Mosch, Munich, 24 June 2008, lot 404.



121

For details of the charges payable in addition to the final Hammer Price of each Lot please refer to paragraphs 7 & 8 of the Notice to Bidders at the back of the catalogue.

122

**STATUETTE DE DIEU THOT BABOUIN,
CALCAIRE, ÉGYPTE, BASSE EPOQUE À EPOQUE
PTOLÉMAÏQUE, CIRCA 664-30 AV. J.-C.**

AN EGYPTIAN LIMESTONE FIGURE OF THOTH, LATE PERIOD-PTOLEMAIC PERIOD, CIRCA 664-30 B.C., the baboon squatting on an integral plinth, with hands resting on his knees, traces of red pigment, surmounted by a later bronze lunar disc, 29cm high, 12cm wide, 14cm deep

€5,000 - 7,000
£4,300 - 6,000
US\$5,900 - 8,300

Provenance:

Old French private collection.
Anonymous sale; Pierre Bergé, 10 October 2017, lot 155.

123

**MASQUE DE SARCOPHAGE, BOIS, ÉGYPTE,
BASSE EPOQUE À EPOQUE PTOLÉMAÏQUE,
CIRCA 664-30 AV. J.-C.**

AN EGYPTIAN WOOD SARCOPHAGUS MASK, LATE PERIOD-PTOLEMAIC PERIOD, CIRCA 664-30 B.C., the wig and eyes painted in black, 20cm high, 35cm wide, 14cm deep

€800 - 1,200
£690 - 1,000
US\$950 - 1,400

Provenance:

M. E.B. collection, Southern France, formed 1950s-1990.
Archéologie - Importante Collection Française Méridionale, de M. E.B. constituée de 1950 à 1990;
l'Hôtel des Ventes Holz Artles, Arles, 17 May 2014, lot 97.



122



123



124

124

DIEU HARPOCRATE, BRONZE, ÉGYPTE, BASSE EPOQUE À EPOQUE PTOLEMAÏQUE, CIRCA 664-30 AV. J.-C.

AN EGYPTIAN BRONZE HARPOCRATES, LATE PERIOD-PTOLEMAIC PERIOD, CIRCA 664-30 B.C., the nude youthful god depicted seated with his right forefinger held to his mouth, wearing the *nemes* headdress surmounted by the *hemhmet* crown and a plaited sidelock of youth with an incised wig and frontal uraeus, the integral base inscribed on three sides with hieroglyphic text, 24cm high, 7cm wide, 7cm deep

€5,000 - 7,000

£4,300 - 6,000

US\$5,900 - 8,300

Provenance:

Acquired from J.-P. Mariaud de Serres, Paris.

125

MASQUE PLASTRON, TOILE STUQUEÉE, ÉGYPTE, EPOQUE PTOLEMAÏQUE, CIRCA 332-30 AV. J.-C.

AN EGYPTIAN GILT AND POLYCHROME PAINTED CARTONNAGE MUMMY MASK, PTOLEMAIC PERIOD, CIRCA 332-30 B.C., with striped tripartite wig, the eyes with extended cosmetic lines and brows, 21cm high, 26cm wide, 7cm deep

€1,500 - 2,000

£1,300 - 1,700

US\$1,800 - 2,400

Provenance:

E.S. collection, North Germany, acquired in 1979 from Muenzhandlung Kroyer, Hamburg.

Anonymous sale; Gorny and Mosch, Munich, 12 December 2012, lot 520.



125

126

SARCOPHAGE D'HORUS-FAUCON, ÉGYPTE, BASSE ÉPOQUE À ÉPOQUE PTOLÉMAÏQUE, CIRCA 664-30 AV. J.-C.

AN EGYPTIAN BRONZE HORUS FALCON SARCOPHAGUS, LATE PERIOD-PTOLEMAIC PERIOD, CIRCA 664-30 B.C., standing on an integral rectangular plinth, atop a hollow rectangular sarcophagus, the closed wings crossing over the tail, with incised feather details, wearing the Double Crown of Upper and Lower Egypt, 14.3cm high, 4.4cm wide, 14.4cm deep

€6,000 - 8,000
£5,100 - 6,900
US\$7,100 - 9,500

Provenance:

Old private M. R.S. collection, Bordeaux; old label of M. Tiano on underside of base.

From the earliest beginnings of Pharaonic Egypt, the falcon was identified with the sun-god Horus, one of the most important figures of the Egyptian Pantheon, whose cults were spread throughout Egypt. From the Late Period onwards, innumerable falcons were mummified and buried within sacred animal necropoleis, or housed in hollow bronze coffins such as the present lot. The open end of the coffin was probably sealed by a thin sheet of metal once the remains were inserted; this was likely lost when the contents were removed. For similar, see S. D'Auria et. al, *Mummies & Magic, the Funerary Arts of Ancient Egypt*, Museum of Fine Arts, Boston, 1988, no. 195.

126



127

DIEU HARPOCRATE, BRONZE, ÉGYPTE, BASSE ÉPOQUE À ÉPOQUE PTOLÉMAÏQUE, CIRCA 664-30 AV. J.-C.

AN EGYPTIAN BRONZE HARPOCRATES, LATE PERIOD-PTOLEMAIC PERIOD, CIRCA 664-30 B.C., the seated nude youthful god holding his right forefinger to his lips wearing the Red Crown with central uraeus, with double plumes of Amun and Sidelock of Youth, 22.8cm high, 5cm wide, 6cm deep

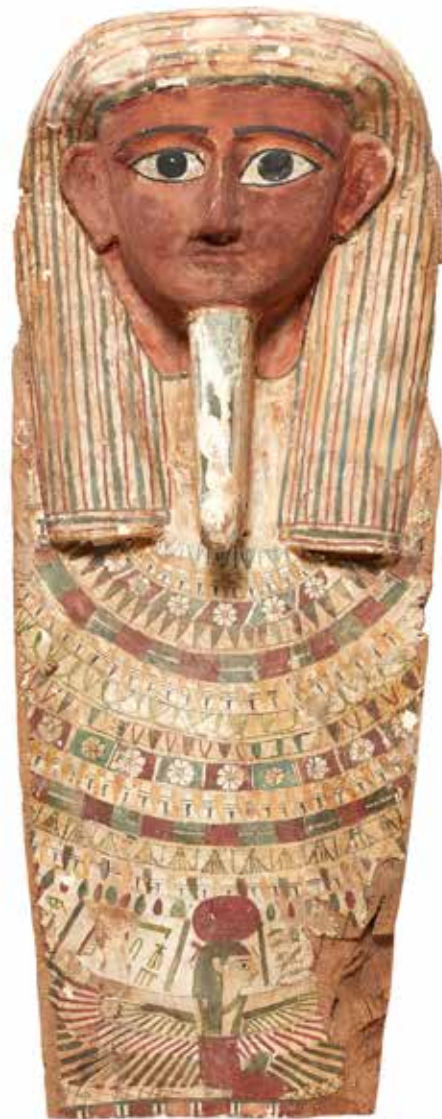
€5,000 - 7,000
£4,300 - 6,000
US\$5,900 - 8,300

Provenance:

Dannett collection, Melbourne, Australia.
Anonymous sale; Leonard Joel Pty Ltd., Melbourne, 29 July 1949, lot 74.
Private collection, Malvern, Australia, thence by descent.
Anonymous sale; Christie's, London, 27 October 2009, lot 93.

127





128

PARTIE SUPÉRIEURE DE COUVERCLE ANTHROPOMORPHE DE SARCOPHAGE, BOIS, ÉGYPTE, BASSE ÉPOQUE, XXVI DYNASTIE, CIRCA 664-525AV. J.-C.

AN EGYPTIAN PAINTED WOOD UPPER PART OF AN ANTHROPOID COFFIN LID, LATE PERIOD, 26TH DYNASTY, CIRCA 664-525 B.C., the gesso painted lid depicting the deceased wearing a striped wig, false beard and a broad beaded collar, the sky goddess Nut with wings outstretched kneeling below, hieroglyphic text above her referring to the goddess herself: 'The one who gives birth to the gods', details in red, green, blue, black and ochre on a white ground, 119cm high, 43.5cm wide, 16cm deep

€4,000 - 6,000
£3,400 - 5,100
US\$4,700 - 7,100

Provenance:

M. E. B. collection, Southern France, formed 1950s-1990.
Archéologie - Importante Collection Française Méridionale, de M. E.B. constituée de 1950 à 1990; l'Hôtel des Ventes Holz Artles, Arles, 17 May 2014, lot 87.

For a similar coffin cf. John Taylor, *Egyptian Coffins*, The British Museum, 1989, ill. 49.

129

**COUVERCLE DE SARCOPHAGE, BOIS ET PIGMENTS
POLYCHROME, ÉGYPTE, ÉPOQUE PTOLÉMAÏQUE,
CIRCA 332-30 AV. J.-C.**

AN EGYPTIAN PAINTED WOOD COFFIN, PTOLEMAIC PERIOD, CIRCA 332-30 B.C., of anthropomorphic form, the tripartite wig and false beard painted black, wearing an elaborate broad beaded collar with Horus falcon head terminals, with central vessel pendant, details in red, white, green and black paint, 184cm high, 52cm wide, 38cm deep

€15,000 - 20,000

£10,000 - 15,000

US\$14,000 - 21,000

Provenance:

M. E. B. collection, Southern France, formed 1950s-1990.
Archéologie - Importante Collection Française Méridionale, de M. E.B. constituée de 1950 à 1990; l'Hôtel des Ventes Holz Artles, Arles, 17 May 2014, lot 88.

Anthropoid coffins like this example first appeared by the Middle Kingdom - skillfully carved so as to outline the mummy's body and decorated with the visage and wig of the deceased individual. Such coffins not only replicated the mummy's form kept within, but also served as actual substitutes for the bodies in the event that the mummy's body was lost or destroyed. During Ptolemaic times, painted decoration shifted from including inscriptions naming the deceased, to more individualized images of the dead. New pigments such as red lead and lead white were introduced and colour pallets became more vivid.





130

**CARTONNAGE DE MOMIE, COUVRE PIEDS, TOILE STUQUÉE,
ÉGYPTE, ÉPOQUE ROMAINE, CIRCA IIE-IIIIE S. AP. J.-C.**

AN EGYPTIAN CARTONNAGE MUMMY FOOTCASE, ROMAN PERIOD, CIRCA 2ND-3RD CENTURY A.D., wearing gilt thonged sandals with gilt toenails, the sides decorated with the goddesses Isis and Nephthys, the soles of her sandals, with chequerboard design depicted on the underside of the foot case, details in pink, red, yellow, blue and green, 19.5cm high, 17.5cm wide, 25cm deep

€4,000 - 6,000
£3,400 - 5,100
US\$4,700 - 7,100

Provenance:

Anonymous sale; Hôtel Drouot, Paris, 25-26 September 1998, lot 701.
Anonymous sale; Pierre Bergé, Paris, 21 May 2014, lot 80.

For an example of a mummy of a young girl with thonged sandals and gilt toenails, dated circa 100-20 A.D., see S. Walker and M. Bierbrier, *Ancient Faces, Mummy Portraits from Roman Egypt*, London, 1997, p.82-83, no. 60. After the 3rd Century B.C it became typical for cartonnage cases to be made of several individual pieces including the footcase.



131

131

DEUX PTAH PATÈQUE, CORPS ACÉPHALE, ÉGYPTE, ÉPOQUE PTOLÉMAÏQUE À ÉPOQUE ROMAINE, CIRCA IVE S. AV.-IIIE S. AP. J.-C.

TWO EGYPTIAN LIMESTONE PATAIKOS TORSOS, PTOLEMAIC PERIOD-ROMAN PERIOD, CIRCA 4TH CENTURY B.C.-3RD CENTURY A.D., each torso of the corpulent bodied dwarf god depicted standing with legs apart, short arms at the sides, *smaller 18.5cm high, 13cm wide, 8cm deep; larger 21.5cm high, 14cm wide, 11cm deep (2)*

€4,000 - 6,000
 £3,400 - 5,100
 US\$4,700 - 7,100

Provenance:

Private collection, the Boulonnais, acquired in the 1980s.
Entière collection de Monsieur B. Partie 1; Delorme & Collin du Bocage, Paris, 24 February 2010, lot 61.

132

FLACON EN FORME DE TÊTE DE DIONYSOS, TERRE CUITE, ART ROMAIN OU ÉGYPTE, CIRCA IIIIE-IER S. AV. J.-C.

A ROMANO-EGYPTIAN POTTERY DIONYSUS HEAD FLASK, CIRCA 3RD-1ST CENTURY B.C., the bearded god wearing a fillet and vine in his hair, *12.5cm high, 7.5cm wide, 6cm deep*

€800 - 1,200
 £690 - 1,000
 US\$950 - 1,400

Provenance:

Acquired from La Reine Margot, Paris.



132

NOTE AUX ENCHÉRISSEURS

La présente Note est adressée par *Bonhams* à toute personne pouvant être intéressée par un *Lot*, et à toutes les personnes participant à une vente aux enchères, y compris les personnes assistant à la vente aux enchères, les *Enchérisseurs* et les *Enchérisseurs* potentiels (y compris les *Acheteurs* éventuels du *Lot*). Pour plus de commodité, nous utilisons les termes « *Enchérisseurs* » ou « vous » pour désigner ces personnes. Notre Liste des Définitions et notre Glossaire font partie intégrante de la présente Note. Ils figurent en Annexe 3 au *Catalogue*. Les mots et expressions figurant en italique dans la présente Note sont expliqués dans la Liste des définitions. IMPORTANT :Des informations supplémentaires applicables à la *Vente* peuvent également figurer dans le *Catalogue de la Vente*, dans une note insérée dans le *Catalogue* et/ou dans une note affichée dans le lieu de *Vente*, et il vous incombe de les lire également. Des annonces concernant la *Vente* pourront également être faites oralement avant ou pendant la *Vente* sans préavis écrit. Vous devez être conscient de la possibilité que des changements soient apportés aux conditions de la *Vente*, être vigilant sur ce point et demander, avant d'enchérir, si de tels changements sont intervenus.

1. NOTRE RÔLE

Dans son rôle d'*Adjudicateur de lots*, *Bonhams* est autorisé par le *Vendeur* à agir uniquement pour et dans l'intérêt du *Vendeur*. Le rôle de *Bonhams* est de vendre les *Lots* à un *Enchérisseur* au prix le plus élevé possible. *Bonhams* n'agit pas pour le compte des *Acheteurs* ou des *Enchérisseurs* et ne leur fournit aucun conseil. Si *Bonhams* ou un membre de son personnel fait des déclarations à propos d'un *Lot*, ou si *Bonhams* fournit un *Rapport sur l'État* à propos d'un *Lot*, ces déclarations seront faites ou ce rapport sera établi pour le compte du *Vendeur* du *Lot*. Il est fortement conseillé aux *Enchérisseurs* et *Acheteurs* qui n'ont pas eux-mêmes des connaissances d'expert sur les *Lots* de solliciter et d'obtenir un avis indépendant sur les *Lots* et leur valeur, avant d'enchérir sur ceux-ci. Le *Vendeur* a autorisé *Bonhams* à vendre le *Lot* en qualité de mandataire agissant pour son compte et, sauf accord contraire exprès, *Bonhams* agit exclusivement en qualité de mandataire du *Vendeur*. Toute assertion ou déclaration faite par nous au titre d'un *Lot* est faite pour le compte du *Vendeur* et non pour notre compte, à moins que *Bonhams* ne vende un *Lot* en tant que mandant, et tout *Contrat de Vente* est conclu entre l'*Acheteur* et le *Vendeur* et non entre l'*Acheteur* et nous-mêmes. Si *Bonhams* vend un *Lot* en tant que mandant, il en sera fait mention dans le *Catalogue* ou dans une annonce du *Commissaire-priseur* à cet effet ou dans un avis affiché dans le lieu de la *Vente* ou inséré dans le *Catalogue*. *Bonhams* n'assume ou n'accepte aucune obligation ni responsabilité envers vous, sur le fondement de la responsabilité contractuelle ou quasi-délictuelle (directe, collatérale, expresse, tacite ou autre). Si vous êtes le dernier *Enchérisseur* pour un *Lot* et donc l'achetez, *Bonhams* conclura un contrat avec vous en tant qu'*Acheteur* dans les termes du *Contrat avec l'Acheteur*, joint en Annexe 2 au *Catalogue*, qui régira les relations entre *Bonhams* et vous-même en votre qualité d'*Acheteur*.

2. LOTS

Sous réserve de la *Description Contractuelle* imprimée en caractères gras dans l'*Article* consacré au *Lot* dans le *Catalogue des Ventes en Ligne* (voir paragraphe 3 ci-dessous), les *Lots* sont vendus à l'*Acheteur* « en l'état », avec tous leurs défauts et imperfections. Les illustrations et photographies des *Lots* servent uniquement à leur identification. Une photographie ou illustration figurant dans le *Catalogue* (à l'exception des photographies formant partie de la *Description Contractuelle*) ou ailleurs peut ne pas reproduire exactement la ou les couleurs ou le véritable état du *Lot*. Les *Lots* sont disponibles pour examen avant la *Vente*, et il vous incombe de vous assurer vous-même de chacun des aspects d'un *Lot*, y compris son auteur, son attribution, son état, sa provenance, son histoire, son contexte, son authenticité, son style, son époque, son âge, son aptitude à une utilisation particulière, son état de marche s'il s'agit d'une voiture (le cas échéant) son origine, sa valeur et son prix de vente Estimé (y compris le Prix d'Adjudication). Il vous incombe d'examiner tout *Lot* qui vous intéresse. Il convient de rappeler que l'état réel d'un *Lot* peut ne pas être aussi bon que celui qu'indique son apparence extérieure. En particulier, des pièces peuvent avoir été remplacées ou changées et des *Lots* peuvent ne pas être authentiques ou de qualité satisfaisante ; l'intérieur d'un *Lot* peut ne pas être visible, peut ne pas être d'origine ou peut être endommagé, par exemple s'il est recouvert d'une tapissérie ou d'un revêtement quelconque. Étant donné leur âge, de nombreux *Lots* peuvent avoir été endommagés et/ou réparés et vous ne devez pas présumer qu'un *Lot* est en bon état. Les objets électroniques ou mécaniques ou les pièces sont vendus pour leur intérêt artistique, historique ou culturel et peuvent ne pas fonctionner ou ne pas être conformes aux exigences légales actuelles. Vous ne devez pas présumer que des objets électriques destinés à fonctionner sur les réseaux de l'électricité domestique pourront être connectés sur ces réseaux et devez donc préalablement obtenir un rapport sur leur état de la part d'un électricien qualifié. Ces objets impropres à être connectés sont vendus uniquement comme des objets de vitrine. Si vous n'avez pas l'expertise nécessaire concernant un *Lot*, prenez conseil à ce sujet. Nous pouvons vous aider à prendre les dispositions nécessaires afin de vous permettre de procéder ou de faire procéder à des examens et tests plus détaillés. Toute personne qui endommage un *Lot* sera responsable de la perte ainsi causée.

3. DESCRIPTIONS DES LOTS ET ESTIMATIONS

Description contractuelle d'un Lot

Le *Catalogue* contient un *Article* pour chaque *Lot*. Chaque *Lot* est vendu par le *Vendeur* à l'*Acheteur* comme correspondant uniquement à la partie de l'*Article* imprimée en caractères gras, et

(sauf pour la couleur, qui peut être reproduite de manière inexacte) à toute photographie du *Lot* dans le *Catalogue*. Le reste de l'*Article*, qui n'est pas imprimé en caractères gras, représente uniquement l'opinion de *Bonhams* (donnée au nom du *Vendeur*) sur le *Lot* et ne fait pas partie de la *Description contractuelle* conformément à laquelle le *Lot* est vendu par le *Vendeur*.

Estimations

Dans la plupart des cas, une *Estimation* est imprimée à côté de l'*Article*. Les *Estimations* fournies expriment uniquement l'opinion de *Bonhams* faite au nom du *Vendeur* à propos de la fourchette dans laquelle *Bonhams* pense que le *Prix d'adjudication* pour le *Lot* est susceptible de se situer. Il ne s'agit en aucun cas d'une estimation de valeur. Les *Estimations* ne tiennent pas compte de la TVA, de la *Commission d'achat* ou d'autres frais payables par l'*Acheteur*, qui sont décrits en détail au paragraphe 7 de la présente Note. Les prix dépendent des enchères et les *Lots* peuvent se vendre à des *Prix d'adjudication* inférieurs ou supérieurs aux *Estimations*. Les *Estimations* ne doivent donc pas être considérées comme une indication du prix de vente réel ou de la valeur d'un *Lot*. Les *Estimations* sont fournies dans la devise de la *Vente*.

Rapports sur l'état

Pour la plupart des *Lots*, vous pouvez demander à *Bonhams* un *Rapport sur l'état* physique général du *Lot*. Si vous lui faites cette demande, *Bonhams* vous fournira ce rapport gratuitement, pour le compte du *Vendeur*. Étant donné qu'il s'agit d'un service supplémentaire et gratuit, *Bonhams* ne conclut pas un contrat avec vous au titre du *Rapport sur l'État*. En conséquence, *Bonhams* n'assume aucune responsabilité à votre égard à ce titre. Chaque *Rapport sur l'État* exprime l'opinion raisonnable de *Bonhams* quant à l'état général du *Lot* concerné et *Bonhams* ne déclare ni ne garantit qu'un *Rapport sur l'État* inclut tous les aspects de l'état interne ou externe du *Lot*. Le *Vendeur* ne vous doit ni n'accepte de vous devoir, en tant qu'*Enchérisseur* ou *Acheteur*, aucune obligation concernant ce rapport gratuit à propos d'un *Lot*, qui vous est fourni afin que vous puissiez l'examiner ou le faire examiner par un expert mandaté par vous.

Responsabilité du Vendeur envers vous

Le *Vendeur* ne fait et ne s'oblige à faire aucune déclaration factuelle, et n'assume aucune *Garantie*, aucune obligation ni aucune responsabilité contractuelle ou quasi-délictuelle (excepté envers l'*Acheteur* final, ainsi qu'il est dit ci-dessus) au titre de l'exactitude ou du caractère complet de toute assertion ou déclaration faite par lui ou pour son compte, qui contient un élément quelconque de description de tout *Lot* ni au titre du prix de vente prévu ou probable de tout *Lot*. Exception faite de ce qui est stipulé ci-dessus, aucune assertion ou déclaration faite par le *Vendeur* ou pour son compte contenant un élément quelconque de description d'un *Lot*, ni aucune *Estimation* ne sont incorporées dans le *Contrat de Vente* entre le *Vendeur* et l'*Acheteur*.

Responsabilité de Bonhams envers vous

Vous avez la possibilité d'examiner le *Lot* si vous le souhaitez et le *Contrat de Vente* d'un *Lot* est conclu avec le *Vendeur* et non avec *Bonhams*. *Bonhams* agit exclusivement en qualité de mandataire du *Vendeur* (à moins que *Bonhams* ne vende le *Lot* en tant que mandant). *Bonhams* n'assume envers vous aucune obligation d'examiner, d'enquêter ou de procéder à des tests sur chaque *Lot*, approfondis ou autres, afin d'établir l'exactitude ou de vérifier autrement toutes *Descriptions* ou opinions données par *Bonhams*, ou par toute personne pour le compte de *Bonhams*, que ce soit dans le *Catalogue* ou ailleurs. Vous ne devez pas supposer que ces examens, ces enquêtes ou ces tests ont été réalisés. *Bonhams* ne fait et ne s'oblige à faire aucune déclaration factuelle, et n'assume aucune obligation ni aucune responsabilité (contractuelle ou quasi-délictuelle) au titre de l'exactitude ou du caractère complet de toute assertion ou déclaration faite par *Bonhams* ou pour le compte de *Bonhams* qui contient un élément quelconque de description de tout *Lot* ni au titre du prix de vente prévu ou probable de tout *Lot*. Aucune assertion ou déclaration faite par *Bonhams* ou pour son compte contenant un élément quelconque de description d'un *Lot*, ni aucune *Estimation* ne sont incorporées dans notre *Contrat avec l'Acheteur*.

Modifications

Les *Descriptions* et les *Estimations* peuvent être modifiées à la discrétion de *Bonhams* de temps en temps par le biais d'une annonce verbale ou d'un avis écrit avant ou pendant une *Vente*. LE LOT EST DISPONIBLE POUR EXAMEN ET VOUS DEVEZ VOUS FORMER VOTRE PROPRE OPINION SUR CELUI-CI. IL VOUS EST FORTEMENT CONSEILLÉ D'EXAMINER TOUT LOT OU DE LE FAIRE EXAMINER POUR VOTRE COMPTE AVANT LA VENTE.

4. CONDUITE DE LA VENTE

Nos *Ventes* sont des ventes aux enchères publiques, auxquelles des personnes peuvent assister et vous devriez saisir l'opportunité de ce faire. Nous nous réservons le droit, à notre seule discrétion, de refuser l'accès à nos locaux ou à toute *Vente* et de faire sortir toute personne de nos locaux et salles des ventes, sans devoir en indiquer la raison. Nous pouvons à notre seule et entière discrétion décider de procéder à la *Vente*, d'inclure un *Lot* dans la *Vente*, ainsi que de la manière dont la *Vente* se déroulera, et nous pouvons offrir les *Lots* à la *Vente* dans tout ordre que nous choisissons, nonobstant les numéros attribués aux *Lots* dans le *Catalogue*. Vous devez donc vérifier la date et l'heure de commencement de la *Vente*, et vérifier si des *Lots* ont été retirés de la *Vente* ou ajoutés tardivement à celle-ci. En effet, ces retraits ou ajouts tardifs peuvent modifier l'heure à laquelle un *Lot* qui vous intéresse est mis en *Vente*. Nous pouvons, à notre seule et entière discrétion, refuser toute enchère, augmenter tout pas d'enchère comme nous le jugerons

approprié, diviser tout *Lot*, regrouper deux *Lots*, retirer tout *Lot* d'une *Vente* et, avant que la *Vente* ait pris fin, remettre tout *Lot* aux enchères. Les *Ventes* aux enchères peuvent excéder 100 *Lots* par heure et les pas d'enchère sont généralement d'environ 10% ; toutefois, ces chiffres varient d'une *Vente* à l'autre et d'un *Commissaire-priseur* à l'autre.

Contactez le département organisant la *Vente* pour avoir un avis sur ce point. Si un *Prix de Réserve* a été fixé pour un *Lot*, le *Commissaire-priseur* peut, en son absolue discrétion, passer des enchères (à concurrence d'un montant qui ne sera ni égal ni supérieur à ce *Prix de Réserve*) pour le compte du *Vendeur*. Nous ne sommes pas responsables envers vous de la présence ou de l'absence d'un *Prix de Réserve* au titre de tout *Lot*. Si un *Prix de Réserve* a été fixé, il ne devra pas être supérieur à la plus basse *Estimation* faite dans le *Catalogue*, en supposant que la devise du *Prix de Réserve* n'ait pas fluctué de manière défavorable par rapport à la devise de l'*Estimation*. L'*Acheteur* sera l'*Enchérisseur* qui fait la plus haute enchère acceptable par le *Commissaire-priseur* pour un *Lot* (sous réserve de tout *Prix de Réserve* applicable), et auquel le *Lot* est adjugé par le *Commissaire-priseur* à la tombée du marteau du *Commissaire-priseur*. Tout différend relatif à la plus haute enchère acceptable sera tranché par le *Commissaire-priseur* en son absolue discrétion. Toutes les enchères passées se rapporteront au numéro de *Lot* annoncé par le *Commissaire-priseur*. Un convertisseur électronique de devises peut être utilisé lors de la *Vente*. Cet outil est fourni uniquement pour votre commodité et constitue une évaluation approximative de la contre-valeur d'une enchère donnée dans certaines devises. Nous n'acceptons aucune responsabilité au titre des erreurs qui pourraient se produire en raison de l'utilisation du convertisseur de devises. Nous pouvons utiliser des caméras vidéo pour enregistrer la *Vente* et pouvons enregistrer des appels téléphoniques pour des raisons de sécurité, et afin d'aider à résoudre des différends pouvant s'élever au titre d'enchères passées lors de la *Vente*. À titre d'exemple, lors des *Ventes* de bijoux, nous pouvons utiliser des écrans sur lesquels des images des *Lots* seront projetées. Ce service est fourni pour permettre une meilleure vue des *Lots* lors de la *Vente*. L'image projetée sur l'écran doit être considérée comme une simple indication du *Lot* concerné. Il convient de noter que toutes les enchères passées se rapporteront au numéro de *Lot* annoncé par le *Commissaire-priseur*. Nous n'acceptons aucune responsabilité au titre des erreurs qui pourraient se produire dans l'utilisation de l'écran.

5. ENCHÈRES

Vous devez compléter et nous remettre l'un de nos *Formulaires d'Enchères*, c'est-à-dire notre *Formulaire d'Enregistrement d'Enchérisseur*, notre *Formulaire d'Enchères en Absence (Ordre d'Achat)* ou notre *Formulaire d'Enchères par Téléphone* afin de pouvoir enchérir lors de nos *Ventes*.

Si vous êtes un nouveau client chez *Bonhams* ou si vous n'avez pas récemment mis à jour vos données d'enregistrement, vous devez vous préenregistrer, au moins deux jours ouvrables avant la *Vente* lors de laquelle vous souhaitez enchérir. Vous devez fournir un justificatif d'identité et de domicile délivré par le gouvernement. Si vous êtes une société, il faut fournir votre certificat d'immatriculation (Extrait Kbis) ou un document équivalent, avec votre dénomination et l'adresse de votre siège social, une preuve de votre adresse actuelle délivrée par le gouvernement, une preuve documentaire de vos propriétaires effectifs et de vos administrateurs et une preuve de l'autorisation d'effectuer des transactions.

Nous pouvons également vous demander une référence financière et/ou une caution avant de vous autoriser à enchérir. Nous nous réservons le droit, à notre discrétion, de demander des informations supplémentaires afin de compléter notre identification de client, de refuser d'enregistrer une personne comme *Enchérisseur*, et de rejeter ses enchères si elles ont déjà été enregistrées. Nous nous réservons également le droit de différer la finalisation de la *Vente* d'un *Lot*, à notre discrétion, le temps de terminer nos enquêtes relatives à l'enregistrement et à l'identification, et d'annuler la *Vente* de tout *Lot*, si vous violez vos garanties en tant qu'*Acheteur*, ou si nous considérons que cette *Vente* serait illégale ou ferait autrement jouer la responsabilité du *Vendeur* ou de *Bonhams*, ou nuirait à la réputation de *Bonhams*.

Enchérir en personne

À condition que vous vous soyez préenregistré pour enchérir ou ayez récemment mis à jour vos données d'enregistrement existantes, vous devez vous rendre à notre bureau d'enregistrement des *Enchérisseurs* dans le lieu de la *Vente* et remplir un Formulaire d'Enregistrement et d'Enchères le jour de la *Vente* (ou, si possible, avant). Le système de numérotation des enchères est parfois visé sous le terme d'« enchères par paddle » (ou « enchères par panneau numéroté »). Il vous sera remis une grande carte (un « paddle » ou panneau numéroté) portant un numéro imprimé, pour les besoins de la *Vente*. Si vous êtes l'*Enchérisseur* gagnant, vous devez faire en sorte que votre numéro puisse être vu clairement par le *Commissaire-priseur* et que votre numéro soit identifié comme celui de l'*Acheteur*. Vous ne devez laisser personne d'autre utiliser votre paddle, étant donné que tous les *Lots* seront facturés au nom et à l'adresse indiqués sur votre Formulaire d'Enregistrement d'*Enchérisseur*. Une fois émise, une facture ne sera pas modifiée. En cas de doute à propos du *Prix d'Adjudication* d'un *Lot* particulier, ou sur la question de savoir si vous êtes l'*Enchérisseur* gagnant d'un *Lot* particulier, informez-vous en le *Commissaire-priseur* avant que le prochain *Lot* ne soit offert à la *Vente*. À la fin de la *Vente*, ou lorsque vous aurez fini d'enchérir, merci de restituer votre paddle au bureau d'enregistrement des *Enchérisseurs*.

Enchérir par téléphone

Si vous souhaitez enchérir par téléphone lors de la *Vente*, et à condition que vous vous soyez préenregistré pour enchérir ou ayez récemment mis à jour vos données d'enregistrement existantes, complétez un Formulaire d'Enregistrement et d'Enchères, disponible dans nos bureaux ou dans la *Catalogue*. Retournez-le au service responsable de la *Vente* 24 heures au moins avant la *Vente*. Il vous incombe de vérifier auprès de notre Service d'Enchères que votre enchère a bien été reçue. Les conversations téléphoniques seront enregistrées. La possibilité d'enchérir par téléphone est un service discrétionnaire offert à titre gratuit et peut ne pas être disponible pour tous les *Lots*. Nous ne serons pas tenus d'enchérir pour votre compte si vous n'êtes pas disponible au moment de la *Vente* ou si la liaison téléphonique est interrompue pendant les enchères. Contactez-nous pour plus de détails.

Enchérir par courrier postal ou par fax

Les *Formulaires d'Enchères en Absence (Ordre d'Achat)* figurent en annexe au *Catalogue* et doivent être complétés et envoyés au service responsable de la *Vente*, dès que vous vous serez préenregistré pour enchérir ou aurez récemment mis à jour vos données d'enregistrement existantes. Il est de votre intérêt de nous retourner votre formulaire dès que possible, étant donné que si deux *Enchérisseurs* ou davantage soumettent des enchères identiques pour un *Lot*, la préférence sera donnée à l'enchère reçue la première. En toute hypothèse, toutes les enchères doivent être reçues 24 heures au moins avant le début de la *Vente*. Vérifiez soigneusement votre *Formulaire d'Enchères en Absence (Ordre d'Achat)* avant de nous le retourner, intégralement complété et signé par vous. Il vous incombe de vérifier avec notre Service Enchères que votre enchère a bien été reçue. Ce service est fourni à titre complémentaire et est confidentiel. Ces enchères sont faites à vos propres risques et nous n'assumons aucune responsabilité si nous ne recevons pas et/ou ne passons pas l'une quelconque de ces enchères. Toutes les enchères passées pour votre compte le seront au plus bas niveau possible sous réserve des *Prix de Réserve* et d'autres enchères passées pour le *Lot*. S'il y a lieu, vos enchères seront arrondies à la baisse au montant le plus proche correspondant aux paliers d'enchères du *Commissaire-priseur*. Les Nouveaux *Enchérisseurs* doivent également fournir la preuve de leur identité et de leur adresse pour pouvoir enchérir. À défaut, votre enchère ne sera pas placée.

Enchérir par Internet

Consultez notre *Site Internet* à l'adresse suivante : <http://www.bonhams.com>, qui donne tous les détails sur la manière d'enchérir via l'Internet.

Bonhams ne sera pas responsable des retards, interruptions ou autres incapacités à faire une enchère, causés par des pertes de connexion Internet, une panne ou un dysfonctionnement du site Internet ou du processus d'enchères, ou un dysfonctionnement de logiciels, systèmes, ordinateurs ou appareils mobiles.

Enchérir par l'intermédiaire d'un mandataire

Les enchères seront traitées comme étant placées exclusivement pour le compte de la personne nommée désignée dans le *Formulaire d'Enchères*, sauf accord contraire écrit de notre part avant la *Vente*. Si vous souhaitez enchérir pour le compte d'une autre personne (votre mandant), vous devez fournir les informations de préinscription énoncées ci-dessus pour vous et pour votre mandant. Nous aurons besoin d'une confirmation écrite du mandant qui atteste de votre droit d'enchérir. **Votre attention est en particulier attirée sur vos obligations de diligence concernant votre mandant et la source de ses fonds, et sur les garanties que vous fournissez si vous êtes l'acheteur, qui sont stipulées au paragraphe 3 du Contrat avec l'acheteur, joint en Annexe 2 au Catalogue.**

Néanmoins, comme l'explique le *Formulaire d'Enchères*, si une personne fait une enchère en tant qu'agent pour le compte d'une autre (son mandant, et ce qu'elle ait ou non divulgué ce fait), elle sera conjointement et solidairement responsable avec son mandant envers le *Vendeur* et *Bonhams* en vertu de tout contrat résultant d'une enchère gagnante.

Faites-nous savoir si vous avez l'intention de nommer un tiers afin d'enchérir pour votre compte lors de la *Vente*, à moins que nous ne soyons chargés d'enchérir en vertu d'un *Formulaire d'Enchères par Téléphone* ou en *Absence (Ordre d'Achat)*, complété par vous. Si nous n'approuvons pas par écrit les dispositions que vous avez prises pour enchérir par l'intermédiaire d'un mandataire avant la *Vente*, nous serons en droit de présumer que la personne enchérissant lors de la *Vente* enchérit pour son propre compte. En conséquence, la personne enchérissant lors de la *Vente* sera l'*Acheteur* et sera tenue de payer le *Prix d'Adjudication* et la *Commission d'Achat* ainsi que les frais associés. Si nous approuvons l'identité de votre client à l'avance, nous serons en mesure d'adresser la facture à votre mandant plutôt qu'à vous-mêmes. Nous exigeons la preuve de l'identité et de l'adresse du client du mandataire préalablement à toutes enchères passées par le mandataire pour son compte. Reportez-vous à nos *Conditions Générales* et contactez notre Département Service Clients pour plus de détails.

Bonhams procède à des vérifications sur les informations fournies par les clients ("Customer Due Diligence (CDD)") sur ses *Vendeurs* et *Acheteurs*, comme l'exigent la réglementation sur le blanchiment de capitaux, le financement du terrorisme et le transfert de fonds (informations sur le payeur) ("les Réglementations"). Selon son interprétation des Réglementations et des Lignes directrices à l'intention de l'industrie, approuvées par le Trésor, *Bonhams* considère que la procédure de CDD prescrite par les Réglementations n'a pas à être accomplie par les *Acheteurs* sur les *Vendeurs* lors des enchères de *Bonhams* ou vice versa.

6. CONTRATS ENTRE L'ACHETEUR ET LE VENDEUR ET ENTRE L'ACHETEUR ET BONHAMS

Lorsque le *Lot* sera adjugé à l'*Acheteur*, un *Contrat de vente du Lot* sera conclu entre le *Vendeur* et l'*Acheteur* selon les termes du *Contrat de vente* figurant à l'Annexe 1 au *Catalogue*. Vous devrez alors payer le *Prix d'achat*, qui se compose du *Prix d'adjudication*, de la *Commission d'achat* plus toute TVA applicable. Simultanément, un contrat séparé est également conclu entre nous, en tant que *Maison de vente aux enchères*, et l'*Acheteur*. Il s'agit de notre *Contrat avec l'Acheteur*, dont les termes figurent en Annexe 2 au *Catalogue*.

Veillez lire attentivement le *Contrat de Vente* et le *Contrat avec l'Acheteur* qui figurent dans le *Catalogue*, que vous devez conclure si vous êtes le meilleur *Enchérisseur*, y compris les garanties relatives à votre statut et à la source des fonds. Nous pourrions modifier les termes de l'un et/ou l'autre de ces contrats avant qu'ils ne soient conclus, en insérant ces modifications dans le *Catalogue*, et/ou en plaçant un encart dans le *Catalogue* et/ou en affichant des avis dans le lieu de *Vente*, et/ou en faisant des annonces verbales avant et pendant la *Vente*. Il vous incombe de vous assurer que vous connaissez la version à jour du *Contrat avec l'Acheteur* relatif à cette *Vente*.

7. COMMISSION D'ACHAT ET AUTRES FRAIS À PAYER PAR L'ACHETEUR

En vertu du *Contrat avec l'Acheteur*, ce dernier nous paie une commission (la *Commission d'achat*) conformément aux termes dudit contrat et aux taux indiqués ci-dessous, calculés par référence au *Prix d'adjudication* et payables en sus de celui-ci.

Pour cette *Vente*, les *Acheteurs* paieront les taux de *Commission d'achat* suivants pour chaque *Lot* acheté :

27,5 % du *Prix d'adjudication* sur les premiers 12000€ ; plus
25 % du *Prix d'adjudication* à partir de 12 001 € et jusqu'à 400 000 € ; plus
20 % du *Prix d'adjudication* à partir de 400 001 € et jusqu'à 4 000 000 € ; plus
14,5 % du *Prix d'adjudication* pour les montants supérieurs à 4 000 000 €

Des frais d'entreposage et de manutention peuvent également être à la charge de l'*Acheteur*, comme indiqué sur la page « Informations sur la *Vente* » au début du *Catalogue*.

La *Commission d'achat* et tous les autres frais dus par l'*Acheteur* sont soumis à la TVA au taux en vigueur, qui est actuellement de 20 %.

La TVA peut également être due sur le *Prix d'Adjudication* du *Lot*, lorsqu'elle est indiquée par un symbole à côté du numéro du *Lot*. Voir le paragraphe 8 ci-dessous pour plus de détails.

Droit de suite

Sur certains *Lots*, portant la mention « AR » dans le *Catalogue* et qui sont vendus à un *Prix d'adjudication* d'au moins 1 000 € (converti dans la devise de la *Vente* en utilisant le taux de référence de la Banque centrale européenne en vigueur à la date de la *Vente*), l'*Acheteur* nous versera une *Commission supplémentaire* pour couvrir nos *Frais* relatifs au paiement des droits d'auteur en vertu des Réglementations le droit de suite des artistes. La *Commission supplémentaire* correspond à un pourcentage du *Prix d'adjudication* calculé conformément au tableau ci-dessous, et ne devra pas dépasser 12 500 € (convertis dans la devise de la *Vente* en utilisant le taux de référence de la Banque centrale européenne en vigueur à la date de la *Vente*).

<i>Prix d'adjudication</i>	Pourcentage
De 0 à 50 000 €	4 %
De 50 000,01 à 200 000 €	3 %
De 200 000,01 à 350 000 €	1 %
De 350 000,01 à 500 000 €	0,5 %
Au-delà de 500 000 €	0,25 %

8. TVA

Le taux de TVA en vigueur au moment de la mise sous presse est de 20 %, mais il est susceptible d'être modifié par le gouvernement et le taux à payer sera celui en vigueur à la date de la *Vente*. Les symboles suivants, figurant à côté du numéro de *Lot*, indiquent que la TVA est due sur le *Prix d'adjudication* et la *Commission d'achat* :

- † TVA au taux en vigueur sur le *Prix d'adjudication* et la *Commission d'achat*
- Ω TVA sur les articles importés au taux en vigueur sur le *Prix d'adjudication* et la *Commission d'achat*
- TVA sur les articles importés à un taux préférentiel de 5,5 % sur le *Prix d'adjudication* et au taux en vigueur sur la *Commission d'achat*
- G Les lingots d'or sont exonérés de la TVA sur le *Prix d'adjudication* et soumis à la TVA au taux en vigueur sur la *Commission d'achat*
- Zéro TVA, aucune TVA ne sera ajoutée au *Prix d'adjudication* ou à la *Commission d'achat*

Dans tous les autres cas, aucune TVA ne sera appliquée sur le *Prix d'adjudication*, mais la TVA au taux en vigueur sera ajoutée à la *Commission d'achat* qui sera facturée sur une base TVA incluse.

9. PAIEMENT

Il est de la plus haute importance de vous assurer que vous avez des fonds facilement disponibles pour payer le *Prix d'achat* et la *Commission d'achat* (plus la TVA et tous les autres *Frais* et dépenses

qui nous sont dus) dans leur intégralité avant d'enchérir pour un *Lot*. Si vous êtes l'*Enchérisseur* gagnant, vous devez effectuer le paiement au plus tard à 16h30 le deuxième jour ouvrable suivant la *Vente*, de telle sorte que toutes les sommes soient compensées au plus tard le huitième jour ouvrable suivant la *Vente*. Les paiements effectués par une personne autre que l'*Acheteur* enregistré ne seront pas acceptés. *Bonhams* se réserve le droit de modifier les conditions de paiement à tout moment.

Le **virement bancaire** est le mode de paiement préféré de *Bonhams*. Vous pouvez transférer des fonds par voie électronique sur notre *Compte*. Dans ce cas, veuillez indiquer sur votre ordre de virement votre numéro de paddle et le numéro de la facture comme référence.

Les coordonnées de notre *Compte* sont les suivantes :

Banque : HSBC

Adresse : BBC PARIS HAUSSMANN

26 Boulevard Malesherbes

75008 Paris

Intitulé du compte : Bonhams France SAS

Numéro du compte : 09170002091

Code guichet : 00917

Numéro IBAN : FR76 3005 6009 1709 1700 0209 192

En cas de paiement par virement bancaire, le montant reçu après déduction des frais bancaires éventuels et/ou de conversion de la monnaie de paiement en livres sterling ne doit pas être inférieur au montant en livres sterling à payer, tel qu'indiqué sur la facture.

Le paiement peut également être effectué par l'une des méthodes suivantes :

Chèque personnel tiré sur une succursale française d'une banque ou d'une société de crédit immobilier : tous les chèques doivent être encaissés avant que vous puissiez retirer vos achats et doivent être libellés à l'ordre de *Bonhams France SAS*.

Espèces : vous pouvez payer des *Lots* achetés par vous lors de la *vente* avec des billets ou des pièces de monnaie libellés dans la devise dans laquelle la *Vente* est conduite (mais non dans une autre devise) sous réserve que le montant total payable par vous au titre de tous les *Lots* achetés par vous lors de la *Vente* n'exécède pas 1 000 € ou la contre-valeur de cette somme dans la devise dans laquelle la *Vente* est conduite, au où le paiement est effectué. Le paiement en en espèces à hauteur de 1 000 € sera accepté pour une facture qui n'excèdera pas ce montant. (art L112-6)

Cartes de débit au nom de l'*Acheteur* (y compris les cartes China Union Pay (CUP) et les cartes de débit émises par Visa et MasterCard uniquement). Il n'y a pas de plafond limitant la valeur du paiement s'il est effectué en personne en utilisant la vérification par carte à puce.

Le paiement **par téléphone** peut également être accepté pour un montant limité à 5 000 €, sous réserve des procédures de vérification appropriées, bien que cette facilité ne soit pas disponible pour les acheteurs qui achètent pour la première fois. Si le montant payable par vous pour des *Lots* excède cette somme, le solde devra être payé par un autre moyen.

Cartes de crédit au nom de l'*Acheteur* (y compris les cartes China Union Pay (CUP) et les cartes de crédit émises par Visa et MasterCard uniquement). La valeur du paiement est limitée à 5 000 € si le paiement est effectué en personne au moyen d'une vérification par carte à puce.

Il est conseillé d'informer à l'avance votre fournisseur de carte de débit ou de crédit de votre achat afin de réduire les retards causés par le fait que nous devons demander une autorisation lorsque vous venez payer.

Remarque : une seule carte de débit ou de crédit peut être utilisée pour le paiement du solde. Si vous avez des questions concernant les paiements par carte, veuillez contacter notre service clients.

Nous nous réservons le droit d'enquêter et d'identifier la source des fonds que nous recevons, de reporter la conclusion de la vente de tout Lot à notre discrétion pendant que nous terminons nos enquêtes, et d'annuler la Vente de tout Lot si vous êtes en violation de vos garanties en tant qu'Acheteur, si nous considérons qu'une telle Vente serait illégale ou imposerait autrement des obligations au Vendeur ou à Bonhams, ou serait préjudiciable à la réputation de Bonhams.

10. RÉCUPÉRATION, ENTREPOSAGE ET DROITS DE RÉLIIATION DES CONSOMMATEURS DE L'UE

L'*Acheteur* d'un *Lot* ne sera pas autorisé à le retirer avant que le paiement intégral et en fonds compensés ait été effectué (sauf si nous avons conclu un accord spécial avec l'*Acheteur*).

Pour la récupération et le retrait des *Lots* achetés, veuillez-vous reporter à la page « Informations sur la *Vente* » au début du *Catalogue*. Nos bureaux sont ouverts de 9h00 à 17h00 du lundi au vendredi. Le *Catalogue* donne des détails sur la récupération des *Lots*, leur entreposage et la *Société d'Entreposage* après la *Vente*.

11. EXPÉDITION

Pour obtenir des informations et des estimations sur le transport maritime national et international ainsi que sur les licences

d'exportation, veuillez contacter :
TRANSPORTS INTERNATIONALS ROGER BENAÏM
Tel : +33 1 46 27 48 48
E-mail: frank@rogerbenaim.com
Website : www.rogerbenaim.com

1. RESTRICTIONS EN MATIÈRE D'EXPORTATION ET DE COMMERCE

Il est de votre seule responsabilité de vous conformer à toutes les réglementations en matière d'exportation et d'importation relatives à vos achats et également d'obtenir toute licence d'exportation et/ou d'importation nécessaire.

Afin de contrôler la circulation des biens culturels, la loi n°92-1477 du 31 décembre 1992 (modifiée par celle du 10 juillet 2000) soumet les exportations hors du territoire français à des modalités particulières, applicables aux biens dont l'ancienneté et la valeur dépassent certains seuils. Le certificat d'exportation est un simple document administratif qui n'apporte aucune garantie d'authenticité du bien qu'il permet d'exporter. La demande de certificat pour un bien culturel en vue de sa libre circulation hors du territoire français ou de tous autres documents administratifs n'affecte pas l'obligation de paiement incombant à l'acheteur. »

Le besoin de licences d'importation varie d'un pays à l'autre et vous devez vous informer au sujet des exigences et dispositions locales pertinentes. Le refus de délivrance d'une licence d'importation ou d'exportation ou tout retard dans l'obtention de cette licence ne permet pas d'annuler une Vente ni de retarder le paiement intégral du Lot. En règle générale, veuillez contacter notre service d'expédition avant la Vente si vous avez besoin d'aide à propos de la réglementation en matière d'exportation

2. RÉGLEMENTATIONS DE LA CITES

Veuillez noter que tous les Lots marqués du symbole Y sont soumis aux réglementations de la CITES lors de l'exportation de ces articles en dehors de l'UE. Ces réglementations sont disponibles à l'adresse

<https://cites.org>

<https://cites.application.developpement-durable.gouv.fr>

Le refus de délivrance des licences ou permis CITES et tout retard dans l'obtention de ces licences ou permis ne donnent pas lieu à l'annulation ou à la résiliation d'une Vente, et n'autorisent encore moins un retard dans le paiement intégral du Lot.

3. RESPONSABILITÉ DU VENDEUR ET/OU DE BONHAMS

Exception faite de toute responsabilité du *Vendeur* envers l'*Acheteur* en vertu du *Contrat de Vente*, ni nous-mêmes ni le *Vendeur* ne répondons (pour négligence ou autrement) de toute erreur, description erronée ou omission dans toute *Description d'un Lot* ou dans toute *Estimation* de celui-ci, contenue dans le *Catalogue* ou autrement, que cette *Description* ou *Estimation* soit faite verbalement ou par écrit, et qu'elle soit faite avant ou pendant la *Vente*. Ni nous-mêmes ni le *Vendeur* ne serons responsables de toute perte d'affaires, de profits, de revenus ou de recettes, ni de toute perte de réputation commerciale, perturbation de l'activité ou du temps perdu par la direction ou le personnel, ni de toute perte indirecte ou de tout dommage indirect ou consécutif de toute sorte, indépendamment de la nature, du volume ou de la source de la perte ou du dommage prétendument subi et indépendamment du point de savoir si cette perte ou ce dommage a été causé ou invoqué au titre d'une négligence, d'un autre quasi-délit, d'une violation contractuelle (le cas échéant), de la violation d'une obligation légale, d'une demande de restitution ou autrement. Dans le cas où nous-mêmes et/ou le *Vendeur* serions responsables au titre d'un *Lot* ou de toute *Description* ou *Estimation d'un Lot*, ou au titre de la conduite de toute *Vente d'un Lot*, que cette responsabilité se traduise par le paiement de dommages-intérêts, d'une indemnité ou d'une contribution, ou par une action en restitution ou de toute autre manière, notre responsabilité et/ou la responsabilité du *Vendeur* (combinées si nous-mêmes et le *Vendeur* sommes responsables) seront limitées au paiement d'un montant qui n'excèdera pas le montant du *Prix d'Achat du Lot*, indépendamment de la nature, du volume ou de la source de toute perte ou de tout dommage prétendument subi ou de la somme réclamée comme étant due, et indépendamment du point de savoir si la responsabilité découle d'une négligence, d'un autre quasi-délit, d'une violation contractuelle (le cas échéant), de la violation d'une obligation légale ou autre.

Aucune des stipulations ci-dessus ne sera interprétée comme excluant ou restreignant (directement ou indirectement) notre responsabilité ou excluant ou restreignant les droits ou recours d'une personne au titre (i) d'une fraude, ou (ii) du décès ou d'un préjudice corporel causé par notre négligence (ou par la négligence de toute personne agissant sans notre contrôle ou dont nous sommes légalement responsables), ou (iii) des actes ou omissions dont nous sommes responsables en vertu de la Loi britannique de 1957 sur la responsabilité des occupants, ou (iv) de toute autre responsabilité dans la mesure où elle ne peut pas être exclue ou restreinte en vertu de la loi, ou (v) de nos engagements en vertu des paragraphes 9 (uniquement en relation avec les Ventes spécialisées de Timbres et de Livres) et 10 du *Contrat avec l'Acheteur*. Les mêmes stipulations s'appliquent au titre du *Vendeur*, de la même manière que si les références qui nous sont faites dans le présent paragraphe étaient remplacées par des références au *Vendeur*.

4. LIVRES

Comme indiqué ci-dessus, tous les Lots sont vendus « en l'état », sujets à des défauts, imperfections et erreurs de *Description*, à l'exception de ce qui est mentionné ci-dessous. Toutefois, vous serez en droit de refuser un *Livre* dans les circonstances concernant les « Lots non conformes » énoncées au paragraphe 11 du *Contrat avec l'Acheteur*. Veuillez noter que la *Commission d'achat des Lots* comprenant des *Livres* imprimés, des cartes non encadrées et des manuscrits reliés est exonérée de TVA.

5. HORLOGES ET MONTRES

Tous les *Lots* sont vendus « en l'état », et l'absence d'indication sur l'état d'une horloge ou d'une montre ne signifie pas que le *Lot* soit en bon état et sans défauts, réparations ou restaurations nécessaires. La plupart des horloges et des montres ont été réparées au cours de leur durée de vie normale et peuvent contenir des pièces qui ne sont pas d'origine. En outre, *Bonhams* ne fait aucune déclaration et ne garantit pas que les horloges ou montres sont en bon état de fonctionnement. Les horloges et les montres contiennent souvent des mécanismes fins et complexes, et les *Enchérisseurs* doivent donc savoir qu'un entretien général, un changement de pile ou des réparations supplémentaires, dont l'*Acheteur* est seul responsable, peuvent être nécessaires.

Taxidermie et articles connexes

Bonhams s'engage, pour le compte du *Vendeur* de ces articles, à respecter pleinement les réglementations de la Cites et du DEBRA. Il est conseillé aux *Acheteurs* de s'informer de toutes ces réglementations et de s'attendre à ce que l'exportation des articles nécessite un temps d'organisation.

6. BIJOUX

Pierres précieuses

Historiquement, de nombreuses pierres précieuses ont été soumises à divers traitements pour améliorer leur apparence. Les saphirs et les rubis sont régulièrement traités thermiquement pour améliorer leur couleur et leur clarté, et les émeraudes sont fréquemment traitées avec des huiles ou de la résine dans le même but. D'autres pierres précieuses peuvent également avoir subi des traitements comme la coloration, l'irradiation ou le revêtement. Ces traitements peuvent être permanents, tandis que d'autres peuvent nécessiter des soins spéciaux ou un nouveau traitement au fil des ans pour conserver leur apparence. Les *Enchérisseurs* doivent savoir que les *Estimations* prennent en compte le fait que les pierres précieuses ont probablement été soumises à de tels traitements. Certains laboratoires délivrent des certificats qui donnent une *Description* plus détaillée des pierres précieuses. Cependant, les différents laboratoires ne sont pas toujours d'accord sur les degrés ou les types de traitement pour une pierre précieuse particulière. Dans le cas où *Bonhams* a reçu ou obtenu des certificats pour un *Lot de la Vente*, ces certificats seront présentés dans le *Catalogue*. *Bonhams* a pour politique de s'efforcer de fournir des certificats de laboratoires reconnus pour certaines pierres précieuses, mais il n'est pas toujours possible d'obtenir des certificats pour chaque *Lot*. Lorsqu'aucun certificat n'est publié dans le *Catalogue*, les *Enchérisseurs* doivent supposer que les pierres précieuses peuvent avoir été traitées. Ni *Bonhams* ni le *Vendeur* n'acceptent de responsabilité pour les contradictions ou les certificats différents obtenus par les *Acheteurs* sur tout *Lot* après la *Vente*.

Poids estimés

Si le poids d'une pierre apparaît dans le corps de la *Description* en lettres majuscules, cela signifie que la pierre a été démontée et pesée par *Bonhams*. Si le poids de la pierre est indiqué comme étant approximatif et n'apparaît pas en majuscules, la pierre a été évaluée par nos soins dans sa monture, et le poids indiqué est une expression de notre opinion. Ces informations sont données à titre indicatif et les *Enchérisseurs* doivent s'assurer de leur exactitude.

Signatures

- **Une broche en diamant, par Kutchinsky**
Lorsque le nom du créateur apparaît dans le titre, *Bonhams* est d'avis que c'est l'œuvre de ce créateur.
- **Une broche en diamant, signée Kutchinsky**, porte une signature qui, selon *Bonhams*, est authentique mais peut contenir des pierres précieuses qui ne sont pas originales, ou la pièce peut avoir été modifiée.
- **Une broche en diamant, montée par Kutchinsky** a été créée par le bijoutier, selon *Bonhams*, mais en utilisant des pierres ou des designs fournis par le client.

7. PHOTOGRAPHIES

Explication des termes du Catalogue

- « **Bill Brandt** » : à notre avis, il s'agit d'une œuvre de l'artiste.
- « **Attribuée à Bill Brandt** » : à notre avis, il s'agit probablement d'une œuvre de l'artiste, mais il y a moins de certitude quant à la paternité que dans la catégorie précédente ;
- « **Signé et/ou titré et/ou daté et/ou inscrit** » : à notre avis, la signature et/ou le titre et/ou la date et/ou l'inscription sont de la main de l'artiste.
- « **Signé et/ou titré et/ou daté et/ou inscrit d'une autre main** » : à notre avis, la signature et/ou le titre et/ou la date et/ou l'inscription ont été ajoutés par une autre main.

La date indiquée est celle de l'image (négatif). Si aucune autre date n'est indiquée, cela signifie que le tirage photographique est ancien (le terme « ancien » peut également figurer dans la *Description du lot*). Une photographie ancienne est une photographie réalisée 5 à 10 ans environ après le négatif. Lorsqu'une deuxième date ultérieure apparaît, il s'agit de la date d'impression. Lorsque la date d'impression exacte n'est pas connue, mais qu'il est entendu qu'elle est postérieure, la mention « imprimé plus tard » apparaîtra dans la *Description du lot*.

Sauf indication contraire, les dimensions indiquées sont celles de la feuille de papier sur laquelle l'image est imprimée, y compris les marges éventuelles. Certaines photographies peuvent apparaître dans le *Catalogue* sans marges illustrées.

Toutes les photographies sont vendues non encadrées, sauf indication contraire dans la *Description du lot*.

8. IMAGES

Explication des termes du Catalogue

Les termes utilisés dans le *Catalogue* ont la signification

suivante, mais sont soumis aux dispositions générales relatives aux *Descriptions* contenues dans le *Contrat de vente* :

- « **Jacopo Bassano** » : à notre avis, il s'agit d'une œuvre de l'artiste. Lorsque le ou les prénoms de l'artiste ne sont pas connus, une série d'astérisques, suivie du nom de famille de l'artiste, précédé ou non d'une initiale, indique qu'à notre avis l'œuvre est de l'artiste nommé ;
- « **Attribué à Jacopo Bassano** » : à notre avis, il s'agit probablement d'une œuvre de l'artiste, mais il y a moins de certitude quant à la paternité que dans la catégorie précédente ;
- « **Studio/Atelier de Jacopo Bassano** » : à notre avis, c'est une œuvre réalisée par une main inconnue dans un atelier de l'artiste qui peut ou non avoir été exécutée sous sa direction ;
- « **Cercle de Jacopo Bassano** » : à notre avis, c'est une œuvre réalisée par une main étroitement associée à l'artiste nommé mais qui n'est pas nécessairement son élève ;
- « **Suiveur de Jacopo Bassano** » : à notre avis, c'est une œuvre d'un peintre travaillant dans le style de l'artiste, contemporain ou quasi contemporain, mais qui n'est pas nécessairement son élève ;
- « **À la manière de Jacopo Bassano** » : à notre avis, c'est une œuvre dans le style de l'artiste et d'une date ultérieure ;
- « **D'après Jacopo Bassano** » : à notre avis, il s'agit d'une copie d'une œuvre connue de l'artiste.
- « **Signé et/ou daté et/ou inscrit** » : à notre avis, la signature et/ou la date et/ou l'inscription sont de la main de l'artiste ;
- « **Porte une signature et/ou une date et/ou une inscription** » : à notre avis, la signature et/ou la date et/ou l'inscription ont été ajoutés par une autre main.

9. PORCELAINE ET VERRE

Dommmages et restauration

Pour vous guider, dans nos *Catalogues*, nous décrivons en détail, dans la mesure du possible, tous les défauts, fêlures et restaurations importants. Ces *Descriptions* pratiques des dommages ne peuvent être définitives, et nos *Rapports sur l'état* ne garantissent pas qu'il n'existe pas d'autres défauts présents non mentionnés. Les *Enchérisseurs* doivent s'assurer, par le biais d'une inspection, de l'état de chaque *Lot*. Veuillez consulter le *Contrat de vente* imprimé dans le *Catalogue* concerné. En raison de la difficulté à déterminer si un objet en verre a été repoli, il n'est fait mention, dans nos *Catalogues*, que des éclats et fêlures visibles. Il n'y a aucune indication de polissage sévère ou autre.

10. VÉHICULES

Plaques et certificats du Veteran Car Club de Grande-Bretagne

Lorsqu'il est fait mention d'une plaque ou d'un certificat de datation du Veteran Car Club dans ce *Catalogue*, il faut garder à l'esprit que le Veteran Car Club de Grande-Bretagne, qui utilise les services de Veteran Car Company Ltd, procède de temps à autre à l'examen des voitures déjà datées et, dans certains cas, lorsque de nouvelles preuves sont disponibles, cet examen peut entraîner une modification de la date. Bien que le Club et Veteran Car Company Ltd fassent tout leur possible pour garantir l'exactitude des données, la date indiquée sur la plaque ou le certificat de datation peut être approximative et les acheteurs potentiels doivent mener leurs propres enquêtes sur la date de la voiture.

11. VINS

Les *Lots* qui se trouvent sous douane et ceux qui sont assujettis à la TVA peuvent ne pas être disponibles pour un retrait immédiat.

Examen des vins

Nous organisons parfois des dégustations avant la vente pour les grandes parcelles (telles que définies ci-dessous). Ces dégustations concernent généralement des vins récents et de consommation courante. Veuillez contacter le service concerné pour plus de détails. Notre politique n'est pas d'inspecter chaque caisse non ouverte. Dans le cas des vins de plus de 20 ans, les caisses sont généralement ouvertes et les niveaux et l'apparence sont consignés dans le *Catalogue des ventes en ligne* si nécessaire. Vous devez tenir compte des variations des niveaux de chambre et de l'état des bouchons, capsules et étiquettes.

Bouchons et chambres

La chambre désigne l'espace entre la base du bouchon et le vin. Les niveaux de chambre pour les bouteilles de forme bordelaise ne sont normalement notés que lorsqu'ils sont sous le goulot et pour les bouteilles de forme bourguignonne, alsacienne, allemande et cognac lorsqu'ils sont supérieurs à 4 centimètres (cm). Les niveaux de chambre acceptables augmentent avec l'âge ; les niveaux généralement acceptables sont les suivants :
Moins de 15 ans - dans le goulot ou moins de 4 cm
15 à 30 ans - très haute épaupe (THE) ou jusqu'à 5 cm
Plus de 30 ans - épaupe supérieure (ES) ou jusqu'à 6 cm

Il convient de noter que les chambres peuvent changer entre le moment de la publication du *Catalogue* et la *Vente* et que les bouchons peuvent s'abîmer lors du transport du vin. Nous n'acceptons de responsabilité que pour les *Descriptions* de l'état au moment de la publication du *Catalogue* et ne pouvons accepter de responsabilité pour toute perte résultant d'une défaillance des bouchons avant ou après ce moment.

Options d'achat de parcelles

Une parcelle est un nombre de *Lots* de taille identique d'un même vin, de la même taille de bouteille et de la même *Description*. L'*Acheteur* de l'un de ces *Lots* a la possibilité d'accepter une partie ou la totalité des *Lots* restants de la même parcelle au même prix, bien que ces options soient à la seule discrétion de la *Maison de vente aux enchères*. Il est donc conseillé aux *Enchérisseurs* absents

d'encherir sur le premier *Lot* d'une parcelle.

Vins sous douane

Les vins sous douane portent la marque Δ. Tous les *Lots* vendus sous douane, et que l'*Acheteur* souhaite conserver ainsi, seront facturés sans *TVA* ni autre taxe sur le *Prix d'adjudication*. Si l'*Acheteur* souhaite prendre le *Lot* comme dédouané, les droits d'accise et la *TVA* seront ajoutés au *Prix d'adjudication* sur la facture. Les *Acheteurs* doivent notifier à *Bonhams*, au moment de la *Vente*, s'ils souhaitent retirer leurs vins sous douane ou dédouanés. Si un *Lot* est pris sous douane, l'*Acheteur* sera responsable du paiement de la *TVA*, des droits, des frais de dédouanement et autres qui pourront être exigibles.

Les *Acheteurs* hors de la communauté européenne doivent savoir que tout transitaire désigné pour exporter leurs achats doit disposer d'un certificat de circulation pour les *Lots* à retirer sous douane.

Informations sur la mise en bouteille et les caisses

Les termes ci-après utilisés dans le *Catalogue* ont les significations suivantes :

CB – Mise en bouteille au château
DB – Mise en bouteille au domaine
EstB – Mise en bouteille à la propriété
BB – Mise en bouteille bordelaise
BE – Mise en bouteille en Belgique
FB – Mise en bouteille en France
GB – Mise en bouteille en Allemagne
OB – Mise en bouteille à Porto
UK – Mise en bouteille au Royaume-Uni
owc – Caisse en bois d'origine
iwc – Caisse en bois individuelle
oc – Carton d'origine

SYMBOLES

LES SYMBOLES SUIVANTS SONT UTILISÉS POUR INDIQUER :

- Y Soumis aux réglementations de la CITES lors de l'exportation de ces articles en dehors de l'UE, voir le paragraphe 13 ci-dessus.
- TP Les objets portant la mention TP seront situés à l'entrepôt et ne pourront être retirés qu'à cet endroit.
- W Les objets portant la mention w seront situés dans l'entrepôt de *Bonhams* et ne pourront être retirés qu'à cet endroit.
- Δ Vins sous douane.
- AR L'*Acheteur* nous versera une *Commission supplémentaire* pour couvrir nos dépenses relatives au paiement des droits d'auteur en vertu des Réglementations britanniques de 2006 sur le droit de suite des artistes. Voir le paragraphe 7 ci-dessus pour plus de détails.
- jð Le Vendeur s'est vu garantir un prix minimum pour le *Lot*, soit par *Bonhams*, soit par une tierce partie. Cela peut prendre la forme d'une enchère irrévocable par un tiers, qui peut réaliser un gain financier sur une *Vente* réussie ou une perte financière en cas d'échec.
- jø *Bonhams* est propriétaire du *Lot* en tout ou en partie ou peut y avoir un autre intérêt économique.
- Ⓞ Ce *Lot* contient ou est fait d'ivoire. Le gouvernement américain a interdit l'importation d'ivoire aux États-Unis.

Les symboles utilisés pour indiquer le statut *TVA* d'un *Lot* sont indiqués au paragraphe 8 ci-dessus.

PROTECTION DES DONNÉES - UTILISATION DE VOS INFORMATIONS

Lorsque nous obtenons des informations à caractère personnel vous concernant, nous ne les utilisons que conformément aux termes de notre Politique de confidentialité (sous réserve de tout consentement spécifique supplémentaire que vous auriez donné au moment où vos informations ont été divulguées). Une copie de notre Politique de confidentialité est disponible sur notre site *Internet* www.bonhams.com. Vous pouvez aussi la demander par courrier électronique à info@bonhams.com

This notice is addressed by *Bonhams* to any person who may be interested in a *Lot*, and to all persons participating in the auction process including auction attendees, *Bidders* and potential *Bidders* (including any eventual *Buyer* of the *Lot*). For ease of reference we refer to such persons as "*Bidders*" or "you". Our List of Definitions and Glossary is incorporated into this *Notice to Bidders*. It is at Appendix 3 at the back of the *Catalogue*. Where words and phrases are used in this notice which are in the List of Definitions, they are printed in italics.

IMPORTANT: Additional information applicable to the *Sale* may be set out in the *Catalogue* for the *Sale*, in an insert in the *Catalogue* and/or in a notice displayed at the *Sale* venue and you should read them as well. Announcements affecting the *Sale* may also be given out orally before and during the *Sale* without prior written notice. You should be alert to the possibility of changes and ask in advance of bidding if there have been any.

1. OUR ROLE

In its role as *Auctioneer* of *Lots*, *Bonhams* acts solely for and in the interests of the *Seller*. *Bonhams'* job is to sell the *Lot* at the highest price obtainable at the *Sale* to a *Bidder*. *Bonhams* does not act for *Buyers* or *Bidders* in this role and does not give advice to *Buyers* or *Bidders*. When it or its staff make statements about a *Lot* or, if *Bonhams* provides a *Condition Report* on a *Lot* it is doing that on behalf of the *Seller* of the *Lot*. *Bidders* and *Buyers* who are themselves not expert in the *Lots* are strongly advised to seek and obtain independent advice on the *Lots* and their value before bidding for them. The *Seller* has authorised *Bonhams* to sell the *Lot* as its agent on its behalf and, save where we expressly make it clear to the contrary, *Bonhams* acts only as agent for the *Seller*. Any statement or representation we make in respect of a *Lot* is made on the *Seller's* behalf and, unless *Bonhams* sells a *Lot* as principal, not on our behalf and any *Contract for Sale* is between the *Buyer* and the *Seller* and not with us. If *Bonhams* sells a *Lot* as principal this will either be stated in the *Catalogue* or an announcement to that effect will be made by the *Auctioneer*, or it will be stated in a notice at the *Sale* or an insert in the *Catalogue*.

Bonhams does not owe or undertake or agree to any duty or responsibility to you in contract or tort (whether direct, collateral, express, implied or otherwise). If you successfully bid for a *Lot* and buy it, at that stage *Bonhams* does enter into an agreement with you as the *Buyer*. The terms of that contract are set out in your *Buyer's Agreement*, which you will find at Appendix 2 at the back of the *Catalogue*, and this will govern *Bonhams'* relationship with the *Buyer*.

2. LOTS

Subject to the *Contractual Description* printed in bold letters in the *Entry* about the *Lot* in the *Catalogue* (see paragraph 3 below), *Lots* are sold to the *Buyer* on an "as is" basis, with all faults and imperfections. Illustrations and photographs contained in the *Catalogue* (other than photographs forming part of the *Contractual Description*) or elsewhere of any *Lots* are for identification purposes only. A photograph or illustration may not reflect an accurate reproduction of the colour(s) or true condition of the *Lot*. *Lots* are available for inspection prior to the *Sale* and it is for you to satisfy yourself as to each and every aspect of a *Lot*, including its authorship, attribution, condition, provenance, history, background, authenticity, style, period, age, suitability, quality, roadworthiness (if relevant), origin, value and estimated selling price (including the *Hammer Price*). It is your responsibility to examine any *Lot* in which you are interested. It should be remembered that the actual condition of a *Lot* may not be as good as that indicated by its outward appearance. In particular, parts may have been replaced or renewed and *Lots* may not be authentic or of satisfactory quality; the inside of a *Lot* may not be visible and may not be original or may be damaged, as for example where it is covered by upholstery or material. Given the age of many *Lots* they may have been damaged and/ or repaired and you should not assume that a *Lot* is in good condition.

Electronic or mechanical items or parts are sold for their artistic, historic or cultural interest and may not operate or may not comply with current statutory requirements. You should not assume that electrical items designed to operate on mains electricity will be suitable for connection to the mains electricity supply and you should obtain a report from a qualified electrician on their status before doing so. Such items which are unsuitable for connection are sold as items of interest for display purposes only. If you yourself do not have expertise regarding a *Lot*, you should consult someone who does to advise you. We can assist in arranging facilities for you to carry out or have carried out more detailed inspections and tests. Please ask our staff for details. Any person who damages a *Lot* will be held liable for the loss caused.

3. DESCRIPTIONS OF LOTS AND ESTIMATES

Contractual Description of a Lot

The *Catalogue* contains an *Entry* about each *Lot*. Each *Lot* is sold by its respective *Seller* to the *Buyer* of the *Lot* as corresponding only with that part of the *Entry* which is printed in bold letters and (except for the colour, which may be inaccurately reproduced) with any photograph of the *Lot* in the *Catalogue*. The remainder of the *Entry*, which is not printed in bold letters, represents *Bonhams'* opinion (given on behalf of the *Seller*) about the *Lot* only and is not part of the *Contractual Description* in accordance with which the *Lot* is sold by the *Seller*.

Estimates

In most cases, an Estimate is printed beside the *Entry*.

Estimates are only an expression of *Bonhams'* opinion made on behalf of the *Seller* of the range where *Bonhams* thinks the *Hammer Price* for the *Lot* is likely to fall; it is not an *Estimate* of value. It does not take into account any *VAT* or *Buyer's Premium* payable or any other fees payable by the *Buyer*, which are detailed in paragraph 7 of the *Notice to Bidders*, below. Prices depend upon bidding and lots can sell for *Hammer Prices* below and above the *Estimates*, so *Estimates* should not be relied on as an indication of the actual selling price or value of a *Lot*. *Estimates* are in the currency of the *Sale*.

Condition Reports

In respect of most *Lots*, you may ask *Bonhams* for a *Condition Report* on the *Lot's* general physical condition. If you do so, this will be provided by *Bonhams* on behalf of the *Seller* free of charge. As this is offered additionally and without charge, *Bonhams* is not entering into a contract with you in respect of the *Condition Report* and accordingly does not assume responsibility to you in respect of it. The *Condition Report* represents *Bonhams'* reasonable opinion as to the *Lot's* general condition in the terms stated in the particular report, and *Bonhams* does not represent or guarantee that a *Condition Report* includes all aspects of the internal or external condition of the *Lot*. Neither does the *Seller* owe or agree to owe you as a *Bidder* or *Buyer* any obligation or duty in respect of this free report about a *Lot*, which is available for your own inspection or for inspection by an expert instructed by you.

The Seller's responsibility to you

The *Seller* does not make or agree to make any representation of fact or contractual promise, *Guarantee* or warranty and undertakes no obligation or duty, whether in contract or in tort (other than to the eventual *Buyer* as set out above), in respect of the accuracy or completeness of any statement or representation made by him or on his behalf, which is in any way descriptive of any *Lot* or as to the anticipated or likely selling price of any *Lot*. Other than as set out above, no statement or representation in any way descriptive of a *Lot* or any *Estimate* is incorporated into any *Contract for Sale* between a *Seller* and a *Buyer*.

Bonhams' responsibility to you

You have the opportunity of examining the *Lot* if you want to and the *Contract for Sale* for a *Lot* is with the *Seller* and not with *Bonhams*; *Bonhams* acts as the *Seller's* agent only (unless *Bonhams* sells the *Lot* as principal). *Bonhams* undertakes no obligation to you to examine, investigate or carry out any tests, either in sufficient depth or at all, on each *Lot* to establish the accuracy or otherwise of any *Descriptions* or opinions given by *Bonhams*, or by any person on *Bonhams'* behalf, whether in the *Catalogue* or elsewhere. You should not suppose that such examinations, investigations or tests have occurred.

Bonhams does not make or agree to make any representation of fact, and undertakes no obligation or duty (whether in contract or tort) in respect of the accuracy or completeness of any statement or representation made by *Bonhams* or on *Bonhams'* behalf which is in any way descriptive of any *Lot* or as to the anticipated or likely selling price of any *Lot*. No statement or representation by *Bonhams* or on its behalf in any way descriptive of any *Lot* or any *Estimate* is incorporated into our *Buyer's Agreement*.

Alterations

Descriptions and *Estimates* may be amended at *Bonhams'* discretion from time to time by notice given orally or in writing before or during a *Sale*.

THE *LOT* IS AVAILABLE FOR INSPECTION AND YOU MUST FORM YOUR OWN OPINION IN RELATION TO IT. YOU ARE STRONGLY ADVISED TO EXAMINE ANY *LOT* OR HAVE IT EXAMINED ON YOUR BEHALF BEFORE THE *SALE*.

4. CONDUCT OF THE SALE

Our *Sales* are public auctions which persons may attend and you should take the opportunity to do so. We reserve the right to our sole discretion to refuse admission to our premises or to any *Sale* and to remove any person from our premises and *Sales*, without stating a reason. We have complete discretion as to whether the *Sale* proceeds, whether any *Lot* is included in the *Sale*, the manner in which the *Sale* is conducted and we may offer *Lots* for *Sale* in any order we choose notwithstanding the numbers given to *Lots* in the *Catalogue*. You should therefore check the date and starting time of the *Sale*, whether there have been any withdrawals or late entries. Remember that withdrawals and late entries may affect the time at which a *Lot* you are interested in put up for *Sale*. We have complete discretion in which toforeuse any bid, to nominate any bidding increment we consider appropriate, to divide any *Lot*, to combine two or more *Lots*, to withdraw any *Lot* from a *Sale* and, before the *Sale* has been closed, to put up any *Lot* for auction again. Auction speeds can exceed 100 *Lots* to the hour and bidding increments are generally about 10%; however, these do vary from *Sale* to *Sale* and from *Auctioneer* to *Auctioneer*. Please check with the department organising the *Sale* for advice on this. Where a *Reserve* has been applied to a *Lot*, the *Auctioneer* may, in his absolute discretion, place bids (up to an amount not equalling or exceeding such *Reserve*) on behalf of the *Seller*. We are not responsible to you in respect of the presence or absence of any *Reserve* in respect of any *Lot*. If there is a *Reserve* it will be no higher than the lower figure for any *Estimate* in the *Catalogue*, assuming that the currency of the *Reserve* has not fluctuated adversely against the currency of the *Estimate*. The *Buyer* will be the *Bidder* who makes the highest bid acceptable to the

Auctioneer for any *Lot* (subject to any applicable *Reserve*) to whom the *Lot* is knocked down by the *Auctioneer* at the fall of the *Auctioneer's* hammer. Any dispute as to the highest acceptable bid will be settled by the *Auctioneer* in his absolute discretion. All bids tendered will relate to the actual *Lot* number announced by the *Auctioneer*. An electronic currency converter may be used at the *Sale*. This equipment is provided as a general guide as to the equivalent amount in certain currencies of a given bid. We do not accept any responsibility for any errors which may occur in the use of the currency converter. We may use video cameras to record the *Sale* and may record telephone calls for reasons of security and to assist in solving any disputes which may arise in relation to bids made at the *Sale*. At some *Sales*, for example, jewellery *Sales*, we may use screens on which images of the *Lots* will be projected. This service is provided to assist viewing at the *Sale*. The image on the screen should be treated as an indication only of the current *Lot*. It should be noted that all bids tendered will relate to the actual *Lot* number announced by the *Auctioneer*. We do not accept any responsibility for any errors which may occur in the use of the screen.

5. BIDDING

You must complete and deliver to us one of our *Bidding Forms*, either our *Bidder Registration Form*, *Absentee Bidding Form* or *Telephone Bidding Form* in order to bid at our *Sales*. If you are a new client at *Bonhams* or have not recently updated your registration details with us, you must pre-register to bid at least two working days before the *Sale* at which you wish to bid. You will be required to provide government-issued proof of identity and residence, and if you are a company, your certificate of incorporation or equivalent documentation with your name and registered address, government issued proof of your current address, documentary proof of your beneficial owners and directors, and proof of authority to transact. We may also request a financial reference and /or deposit from you before allowing you to bid.

We reserve the rights at our discretion to request further information in order to complete our client identification and to decline to register anyone as a *Bidder*, and to decline to accept their bids if they have been so registered. We also reserve the rights to postpone completion of the *Sale* of any *Lot* at our discretion while we complete our registration and identification enquiries, and to cancel the *Sale* of any *Lot* if you are in breach of your warranties as *Buyer*, or if we consider that such *Sale* would be unlawful or otherwise cause liabilities for the *Seller* or *Bonhams* or be detrimental to *Bonhams'* reputation.

Bidding in person

So long as you have pre-registered to bid or have updated your existing registration recently, you should come to our *Bidder* registration desk at the *Sale* venue and fill out a *Registration and Bidding Form* on (or, if possible, before) the day of the *Sale*. The bidding number system is sometimes referred to as "paddle bidding". You will be issued with a large card (a "paddle") with a printed number on it. This will be attributed to you for the purposes of the *Sale*. Should you be a successful *Bidder* you will need to ensure that your number can be clearly seen by the *Auctioneer* and that it is your number which is identified as the *Buyer's*. You should not let anyone else use your paddle as all *Lots* will be invoiced to the name and address given on your *Bidder* Registration Form. Once an invoice is issued it will not be changed. If there is any doubt as to the *Hammer Price* of, or whether you are the successful *Bidder* of, a particular *Lot*, you must draw this to the attention of the *Auctioneer* before the next *Lot* is offered for *Sale*. At the end of the *Sale*, or when you have finished bidding please return your paddle to the *Bidder* registration desk.

Bidding by telephone

If you wish to bid at the *Sale* by telephone, and have pre-registered to bid or have updated your existing registration details recently, please complete a *Registration and Bidding Form*, which is available from our offices or in the *Catalogue*. Please then return it to the office responsible for the *Sale* at least 24 hours in advance of the *Sale*. It is your responsibility to check with our Bids Office that your bid has been received. Telephone calls will be recorded. The telephone bidding facility is a discretionary service offered at no additional charge and may not be available in relation to all *Lots*. We will not be responsible for bidding on your behalf if you are unavailable at the time of the *Sale* or if the telephone connection is interrupted during bidding. Please contact us for further details.

Bidding by post or fax

Absentee Bidding Forms can be found in the back of this *Catalogue* and should be completed and sent to the office responsible for the *Sale*, once you have pre-registered to bid or have updated your existing registration details recently. It is in your interests to return your form as soon as possible, as if two or more *Bidders* submit identical bids for a *Lot*, the first bid received takes preference. In any event, all bids should be received at least 24 hours before the start of the *Sale*. Please check your *Absentee Bidding Form* carefully before returning it to us, fully completed and signed by you. It is your responsibility to check with our Bids Office that your bid has been received. This additional service is complimentary and is confidential. Such bids are made at your own risk and we cannot accept liability for our failure to receive and/or place any such bids. All bids made on your behalf will be made at the lowest level possible subject to *Reserves* and other bids made for the *Lot*. Where appropriate your bids will be rounded down to the nearest amount consistent

with the *Auctioneer's* bidding increments. New *Bidders* must also provide proof of identity and address when submitting bids. Failure to do this will result in your bid not being placed.

Bidding via the internet

Please visit our *Website* at <http://www.bonhams.com> for details of how to bid via the internet.

Bonhams will not be liable for service delays, interruptions or other failures to make a bid caused by losses of internet connection, fault or failure with the website or bidding process, or malfunction of any software or system, computer or mobile device.

Bidding through an agent

Bids will be treated as placed exclusively by and on behalf of the person named on the *Bidding Form* unless otherwise agreed by us in writing in advance of the *Sale*. If you wish to bid on behalf of another person (your principal) you must complete the pre-registration requirements set out above both on your own behalf and with full details of your principal, and we will require written confirmation from the principal confirming your authority to bid.

You are specifically referred to your due diligence requirements concerning your principal and their source of funds, and the warranties you give in the event you are the Buyer, which are contained in paragraph 3 of the Buyer's Agreement, set out at Appendix 2 at the back of the Catalogue.

Nevertheless, as the *Bidding Form* explains, any person placing a bid as agent on behalf of another (whether or not he has disclosed that fact) will be jointly and severally liable with the principal to the *Seller* and to *Bonhams* under any contract resulting from the acceptance of a bid. Equally, please let us know if you intend to nominate another person to bid on your behalf at the *Sale* unless this is to be carried out by us pursuant to a Telephone or Absentee *Bidding Form* that you have completed. If we do not approve the agency arrangements in writing before the *Sale*, we are entitled to assume that the person bidding at the *Sale* is bidding on his own behalf. Accordingly, the person bidding at the *Sale* will be the *Buyer* and will be liable to pay the *Hammer Price* and *Buyer's Premium* and associated charges. If we approve the identity of your client in advance, we will be in a position to address the invoice to your principal rather than you. We will require proof of the agent's identity and residence in advance of any bids made by the agent on his behalf. Please refer to our *Conditions of Business* and contact our Customer Services Department for further details.

Bonhams undertakes Customer Due Diligence (CDD) into its *Sellers* and *Buyers* as required by the Money Laundering, Terrorist Financing and Transfer of Funds (Information on the Payer) Regulations 2017 ("the Regulations"). *Bonhams'* interpretation of the Regulations and Treasury Approved industry Guidance is that CDD under the Regulations is not required by *Buyers* into *Sellers* at *Bonhams* auctions or *vice versa*.

6. CONTRACTS BETWEEN THE BUYER AND SELLER AND THE BUYER AND BONHAMS

On the *Lot* being knocked down to the *Buyer*, a *Contract for Sale* of the *Lot* will be entered into between the *Seller* and the *Buyer* on the terms of the *Contract for Sale* set out in Appendix 1 at the back of the *Catalogue*. You will be liable to pay the *Purchase Price*, which is the *Hammer Price* plus any applicable *VAT*. At the same time, a separate contract is also entered into between us as *Auctioneers* and the *Buyer*. This is our *Buyer's Agreement*, the terms of which are set out in Appendix 2 at the back of the *Catalogue*. Please read the terms of the *Contract for Sale* and our *Buyer's Agreement* contained in the *Catalogue* in case you are the successful *Bidder* including the warranties as to your status and source of funds. We may change the terms of either or both of these agreements in advance of their being entered into, by setting out different terms in the *Catalogue* and/or by placing an insert in the *Catalogue* and/or by notices at the *Sale* venue and/or by oral announcements before and during the *Sale*. It is your responsibility to ensure you are aware of the up to date terms of the *Buyer's Agreement* for this *Sale*.

7. BUYER'S PREMIUM AND OTHER CHARGES PAYABLE BY THE BUYER

Under the *Buyer's Agreement*, a premium (the *Buyer's Premium*) is payable to us by the *Buyer* in accordance with the terms of the *Buyer's Agreement* and at rates set out below, calculated by reference to the *Hammer Price* and payable in addition to it.

For this *Sale* the following rates of *Buyer's Premium* will be payable by *Buyers* on each *Lot* purchased:

27.5% of the *Hammer Price* on the first 12,000 €; plus
25% of the *Hammer Price* from 12,001 € and up to 400,000 €; plus
20% of the *Hammer Price* from 400,001 € and up to 4,000,000 €; plus
14.5% of the *Hammer Price* above 4,000,000 €

Storage and handling charges may also be payable by the *Buyer* as detailed on the specific *Sale* Information page at the front of the *catalogue*.

The *Buyer's Premium* and all other charges payable to us by the *Buyer* are subject to *VAT* at the prevailing rate, currently 20%.

VAT may also be payable on the *Hammer Price* of the *Lot*, where

indicated by a symbol beside the *Lot* number. See paragraph 8 below for details.

On certain *Lots*, which will be marked "AR" in the *Catalogue* and which are sold for a *Hammer Price* of €1,000 or greater (converted into the currency of the *Sale* using the European Central Bank Reference rate prevailing on the date of the *Sale*), the *Additional Premium* will be payable to us by the *Buyer* to cover our *Expenses* relating to the payment of royalties under the Artists Resale Right Regulations 2006. The *Additional Premium* will be a percentage of the amount of the *Hammer Price* calculated in accordance with the table below, and shall not exceed €12,500 (converted into the currency of the *Sale* using the European Central Bank Reference rate prevailing on the date of the *Sale*).

<i>Hammer Price</i>	Percentage amount
From €0 to €50,000	4%
From €50,000.01 to €200,000	3%
From €200,000.01 to €350,000	1%
From €350,000.01 to €500,000	0.5%
Exceeding €500,000	0.25%

8. VAT

The prevailing rate of *VAT* at the time of going to press is 20%, but this is subject to government change and the rate payable will be the rate in force on the date of the *Sale*.

The following symbols, shown beside the *Lot* number, are used to denote that *VAT* is due on the *Hammer Price* and *Buyer's Premium*:

- † *VAT* at the prevailing rate on *Hammer Price* and *Buyer's Premium*
- Ω *VAT* on imported items at the prevailing rate on *Hammer Price* and *Buyer's Premium*
- * *VAT* on imported items at a preferential rate of 5.5% on *Hammer Price* and the prevailing rate on *Buyer's Premium*
- G Gold bullion exempt from *VAT* on the *Hammer Price* and subject to *VAT* at the prevailing rate on the *Buyer's Premium*
- Zero rated for *VAT*, no *VAT* will be added to the *Hammer Price* or the *Buyer's Premium*

In all other instances no *VAT* will be charged on the *Hammer Price*, but *VAT* at the prevailing rate will be added to *Buyer's Premium* which will be invoiced on a *VAT* inclusive basis.

9. PAYMENT

It is of critical importance that you ensure that you have readily available funds to pay the *Purchase Price* and the *Buyer's Premium* (plus *VAT* and any other charges and *Expenses* to us) in full before making a bid for the *Lot*. If you are a successful *Bidder*, payment will be due to us by 4:30 pm on the second working day after the *Sale* so that all sums are cleared by the eighth working day after the *Sale*. Payments made by anyone other than the registered *Buyer* will not be accepted. *Bonhams* reserves the right to vary the terms of payment at any time.

***Bonhams'* preferred payment method is by bank transfer.**

You may electronically transfer funds to our *Account*. If you do so, please quote your paddle number and invoice number as the reference. Our *Account* details are as follows:

Bank: HSBC
Address: BCC PARIS HAUSMANN
26 boulevard Malesherbes
75008 Paris
Account Name: Bonhams France SAS
Account Number: 09170002091
Code guichet : 00917
IBAN Number: FR76 3005 6009 1709 1700 0209 192

If paying by bank transfer, the amount received after the deduction of any bank fees and/or conversion of the currency of payment to pounds sterling must not be less than the sterling amount payable, as set out on the invoice.

Payment may also be made by one of the following methods:

French personal cheque drawn on a French branch of a bank or building society: all cheques must be cleared before you can collect your purchases and should be made payable to *Bonhams France SAS*.

Cash: you may pay for *Lots* purchased by you at this *Sale* with notes or coins in the currency in which the *Sale* is conducted (but not any other currency) provided that the total amount payable by you in respect of all *Lots* purchased by you at the *Sale* does not exceed 1,000 €, or the equivalent in the currency in which the *Sale* is conducted, at the time when payment is made. Cash payments can only be accepted on invoices totaling 1000 € or less.

Debit cards issued in the name of the *Buyer* (including China UnionPay (CUP) cards and debit cards issued by Visa and MasterCard only). There is no limit on payment value if payment is made in person using Chip & Pin verification.

Payment by telephone may also be accepted up to 5,000 €, subject to appropriate verification procedures, although this facility is not available for first time buyers. If the amount payable by you for *Lots* exceeds that sum, the balance must be paid by other means.

Credit cards issued in the name of the *Buyer* (including China UnionPay (CUP) cards and credit cards issued by Visa and MasterCard only). There is a 5,000 € limit on payment value if payment is made in person using Chip & Pin verification.

It may be advisable to notify your debit or credit card provider of your intended purchase in advance to reduce delays caused by us having to seek authority when you come to pay.

Note: only one debit or credit card may be used for payment of an account balance. If you have any questions with regards to card payments, please contact our Customer Services Department. We reserve the rights to investigate and identify the source of any funds received by us, to postpone completion of the sale of any *Lot* at our discretion while we complete our investigations, and to cancel the *Sale* of any *Lot* if you are in breach of your warranties as *Buyer*, if we consider that such *Sale* would be unlawful or otherwise cause liabilities for the *Seller* or *Bonhams*, or would be detrimental to *Bonhams'* reputation.

10. COLLECTION AND STORAGE

The *Buyer* of a *Lot* will not be allowed to collect it until payment in full and in cleared funds has been made (unless we have made a special arrangement with the *Buyer*). For collection and removal of purchased *Lots*, please refer to *Sale* Information at the front of the *Catalogue*. Our offices are open 9.00am – 5pm Monday to Friday. Details relating to the collection of a *Lot*, the storage of a *Lot* and our *Storage Contractor* after the *Sale* are set out in the *Catalogue*.

11. SHIPPING

For information and estimates on domestic and international shipping as well as export licenses please contact TRANSPORTS INTERNATIONAUX ROGER BENAÏM
Phone: +33 1 46 27 48 48
E-mail: frank@rogerbenaim.com
Website : www.rogerbenaim.com

12. EXPORT/TRADE RESTRICTIONS

It is your sole responsibility to comply with all export and import regulations relating to your purchase(s) and also to obtain any relevant export and/or import licence(s). Export licences are issued according to regulation no. 92-1477 of 31 December 1992 (amended by that of 10 July 2000). In order to control the circulation of cultural goods, law no. 92-1477 of 31 December 1992 (amended by that of 10 July 2000) makes exports outside French territory subject to special conditions, applicable to cultural goods whose age and value exceed certain thresholds.

The export certificate itself is an administrative document that does not provide any guarantee of the authenticity of the work(s) that it allows to be exported. The request for a certificate for cultural goods or any other administrative document(s) (and any delay associated thereto) with a view to their free circulation outside French territory shall not permit the rescission of any *Sale* nor allow any delay in making full payment for the *Lot*(s).

The need for import licences varies from country to country and you should acquaint yourself with all relevant local requirements and provisions. The refusal of any import or export licence(s) or any delay in obtaining such licence(s) shall not permit the rescission of any *Sale* nor allow any delay in making full payment for the *Lot*. Generally, please contact our shipping department before the *Sale* if you require assistance in relation to export regulations.

13. CITES REGULATIONS

Please be aware that all *Lots* marked with the symbol Y are subject to CITES regulations when exporting these items outside the EU. These regulations may be found at <https://cites.org>

<https://cites.application.developpement-durable.gouv.fr>
The refusal of any CITES licence or permit and any delay in obtaining such licences or permits shall not give rise to the rescission or cancellation of any *Sale*, nor allow any delay in making full payment for the *Lot*.

14. THE SELLERS AND/OR BONHAMS' LIABILITY

Other than any liability of the *Seller* to the *Buyer* of a *Lot* under the *Contract for Sale*, neither we nor the *Seller* are liable (whether in negligence or otherwise) for any error or misdescription or omission in any *Description* of a *Lot* or any *Estimate* in respect of it, whether contained in the *Catalogue* or otherwise, whether given orally or in writing and whether given before or during the *Sale*. Neither we nor the *Seller* will be liable for any loss of *Business*, profits, revenue or income, or for loss of reputation, or for disruption to *Business* or wasted time on the part of management or staff, or for indirect losses or consequential damages of any kind, irrespective in any case of the nature, volume or source of the loss or damage alleged to be suffered, and irrespective of whether the said loss or damage is caused by or claimed in respect of any negligence, other tort, breach of contract (if any) or statutory duty, restitutionary claim or otherwise. In any circumstances where

we and/or the *Seller* are liable in relation to any *Lot* or any *Description* or *Estimate* made of any *Lot*, or the conduct of any *Sale* in relation to any *Lot*, whether in damages, for an indemnity or contribution, or for a restitutionary remedy or otherwise, our and/or the *Seller's* liability (combined, if both we and the *Seller* are liable) will be limited to payment of a sum which will not exceed by way of maximum the amount of the *Purchase Price* of the *Lot* irrespective in any case of the nature, volume or source of any loss or damage alleged to be suffered or sum claimed as due, and irrespective of whether the liability arises from any negligence, other tort, breach of contract (if any) or statutory duty or otherwise. Nothing set out

above will be construed as excluding or restricting (whether directly or indirectly) our liability or excluding or restricting any person's rights or remedies in respect of (i) fraud, or (ii) death or personal injury caused by our negligence (or by the negligence of any person under our control or for whom we are legally responsible), or (iii) acts or omissions for which we are liable under the Occupiers Liability Act 1957, or (iv) any other liability to the extent the same may not be excluded or restricted as a matter of law or (v) our undertakings under paragraphs 9 (in relation to specialist Stamp or Book Sales only) and 10 of the Buyer's Agreement. The same applies in respect of the Seller, as if references to us in this paragraph were substituted with references to the Seller.

1. BOOKS

As stated above, all Lots are sold on an "as is" basis, subject to all faults, imperfections and errors of Description save as set out below. However, you will be entitled to reject a Book in the circumstances set out in paragraph 11 of the Buyer's Agreement. Please note that Lots comprising printed Books, unframed maps and bound manuscripts are not liable to VAT on the Buyer's Premium.

2. CLOCKS AND WATCHES

All Lots are sold "as is", and the absence of any reference to the condition of a clock or watch does not imply that the Lot is in good condition and without defects, repairs or restorations. Most clocks and watches have been repaired in the course of their normal lifetime and may now incorporate parts not original to them. Furthermore, Bonhams makes no representation or warranty that any clock or watch is in working order. As clocks and watches often contain fine and complex mechanisms, Bidders should be aware that a general service, change of battery or further repair work, for which the Buyer is solely responsible, may be necessary.

3. JEWELLERY

Gemstones

Historically many gemstones have been subjected to a variety of treatments to enhance their appearance. Sapphires and rubies are routinely heat treated to improve their colour and clarity, similarly emeralds are frequently treated with oils or resin for the same purpose. Other treatments such as staining, irradiation or coating may have been used on other gemstones. These treatments may be permanent, whilst others may need special care or re-treatment over the years to retain their appearance. Bidders should be aware that Estimates assume that gemstones may have been subjected to such treatments. A number of laboratories issue certificates that give more detailed Descriptions of gemstones. However there may not be consensus between different laboratories on the degrees, or types of treatment for any particular gemstone. In the event that Bonhams has been given or has obtained certificates for any Lot in the Sale these certificates will be disclosed in the Catalogue. Although, as a matter of policy, Bonhams endeavours to provide certificates from recognised laboratories for certain gemstones, it is not feasible to obtain certificates for each Lot. In the event that no certificate is published in the Catalogue, Bidders should assume that the gemstones may have been treated. Neither Bonhams nor the Seller accepts any liability for contradictions or differing certificates obtained by Buyers on any Lots subsequent to the Sale.

Estimated Weights

If a stone(s) weight appears within the body of the Description in capital letters, the stone(s) has been unmounted and weighed by Bonhams. If the weight of the stone(s) is stated to be approximate and does not appear in capital letters, the stone(s) has been assessed by us within its/their settings, and the stated weight is a statement of our opinion only. This information is given as a guide and Bidders should satisfy themselves with regard to this information as to its accuracy.

Signatures

- **A diamond brooch, by Kutichinsky**
When the maker's name appears in the title, in Bonhams' opinion the piece is by that maker.
- **A diamond brooch, signed Kutichinsky**
Has a signature that, in Bonhams' opinion, is authentic but may contain gemstones that are not original, or the piece may have been altered.
- **A diamond brooch, mounted by Kutichinsky**
Has been created by the jeweller, in Bonhams' opinion, but using stones or designs supplied by the client.

4. PHOTOGRAPHS

Explanation of Catalogue Terms

- "Bill Brandt": in our opinion a work by the artist.
- "Attributed to Bill Brandt": in our opinion probably a work by the artist, but less certainty to authorship is expressed than in the preceding category.
- "Signed and/or titled and/or dated and/or inscribed": in our opinion the signature and/or title and/or date and/or inscription are in the artist's hand.
- "Signed and/or titled and/or dated and/or inscribed in another hand": in our opinion the signature and/or title and/or date and/or inscription have been added by another hand.
- The date given is that of the image (negative). Where no further date is given, this indicates that the photographic print is vintage (the term "vintage" may also be included in the Lot Description). A vintage photograph is one which was made within approximately 5-10 years of the negative. Where a second, later date appears, this refers to the date of printing. Where the exact printing date is not known, but understood

to be later, "printed later" will appear in the Lot Description.

- Unless otherwise specified, dimensions given are those of the piece of paper on which the image is printed, including any margins. Some photographs may appear in the Catalogue without margins illustrated.

- All photographs are sold unframed unless stated in the Lot Description.

5. PICTURES

Explanation of Catalogue Terms

The following terms used in the Catalogue have the following meanings but are subject to the general provisions relating to Descriptions contained in the Contract for Sale:

- "Jacopo Bassano": in our opinion a work by the artist. When the artist's forename(s) is not known, a series of asterisks, followed by the surname of the artist, whether preceded by an initial or not, indicates that in our opinion the work is by the artist named;
- "Attributed to Jacopo Bassano": in our opinion probably a work by the artist but less certainty as to authorship is expressed than in the preceding category;
- "Studio/Workshop of Jacopo Bassano": in our opinion a work by an unknown hand in a studio of the artist which may or may not have been executed under the artist's direction;
- "Circle of Jacopo Bassano": in our opinion a work by a hand closely associated with a named artist but not necessarily his pupil;
- "Follower of Jacopo Bassano": in our opinion a work by a painter working in the artist's style, contemporary or nearly contemporary, but not necessarily his pupil;
- "Manner of Jacopo Bassano": in our opinion a work in the style of the artist and of a later date;
- "After Jacopo Bassano": in our opinion, a copy of a known work of the artist;
- "Signed and/or dated and/or inscribed": in our opinion the signature and/or date and/or inscription are from the hand of the artist;
- "Bears a signature and/or date and/or inscription": in our opinion the signature and/or date and/or inscription have been added by another hand.

6. PORCELAIN AND GLASS

Damage and Restoration

For your guidance, in our Catalogues we attempt to detail, as far as practicable, all significant defects, cracks and restoration. Such practicable Descriptions of damage cannot be definitive, and in providing Condition Reports, we cannot Guarantee that there are no other defects present which have not been mentioned. Bidders should satisfy themselves by inspection, as to the condition of each Lot. Please see the Contract for Sale printed in this Catalogue. Because of the difficulty in determining whether an item of glass has been repolished, in our Catalogues reference is only made to visible chips and cracks. No mention is made of repolishing, severe or otherwise.

7. VEHICLES

The Veteran Car Club of Great Britain Dating Plates and Certificates

When mention is made of a Veteran Car Club Dating Plate or Dating Certificate in this Catalogue, it should be borne in mind that the Veteran Car Club of Great Britain using the services of Veteran Car Company Ltd, does from time to time, review cars already dated and, in some instances, where fresh evidence becomes available, the review can result in an alteration of date. Whilst the Club and Veteran Car Company Ltd make every effort to ensure accuracy, the date shown on the Dating Plate or Dating Certificate cannot be guaranteed as correct and intending purchasers should make their own enquiries as to the date of the car.

8. WINE

Lots which are lying under Bond and those liable to VAT may not be available for immediate collection.

Examining the wines

It is occasionally possible to provide a pre-Sale tasting for larger parcels (as defined below). This is generally limited to more recent and everyday drinking wines. Please contact the department for details. It is not our policy to inspect every unopened case. In the case of wines older than 20 years the boxes will usually have been opened and levels and appearance noted in the Catalogue where necessary. You should make proper allowance for variations in ullage levels and conditions of corks, capsules and labels.

Corks and Ullages

Ullage refers to the space between the base of the cork and the wine. Ullage levels for Bordeaux shaped bottles are only normally noted when below the neck and for Burgundy, Alsace, German and Cognac shaped bottles when greater than 4 centimetres (cm). Acceptable ullage levels increase with age; generally acceptable levels are as follows:

Under 15 years old – into neck or less than 4cm

15 to 30 years old – top shoulder (ts) or up to 5cm

Over 30 years old – high shoulder (hs) or up to 6cm

It should be noted that ullages may change between publication of the Catalogue and the Sale and that corks may fail as a result of transporting the wine. We will only accept responsibility for Descriptions of condition at the time of publication of the Catalogue and cannot accept responsibility for any loss resulting from failure of corks either before or after this point.

Options to buy parcels

A parcel is a number of Lots of identical size of the same wine, bottle size and Description. The Buyer of any of these Lots has

the option to accept some or all of the remaining Lots in the parcel at the same price, although such options will be at the Auctioneer's sole discretion. Absentee Bidders are, therefore, advised to bid on the first Lot in a parcel.

Wines in Bond

Wines lying in Bond are marked Δ . All Lots sold under Bond, and which the Buyer wishes to remain under Bond, will be invoiced without VAT or Duty on the Hammer Price. If the Buyer wishes to take the Lot as Duty paid, Excise Duty and VAT will be added to the Hammer Price on the invoice.

Buyers must notify Bonhams at the time of the sale whether they wish to take their wines under Bond or Duty paid. If a Lot is taken under Bond, the Buyer will be responsible for all VAT, Duty, clearance and other charges that may be payable thereon. Buyers outside the UE must be aware that any forwarding agent appointed to export their purchases must have a movement certificate for Lots to be released under Bond.

Bottling Details and Case Terms

The following terms used in the Catalogue have the following meanings:

- CB – Château bottled
- DB – Domaine bottled
- EstB – Estate bottled
- BB – Bordeaux bottled
- BE – Belgian bottled
- FB – French bottled
- GB – German bottled
- OB – Oporto bottled
- UK – United Kingdom bottled
- owc – original wooden case
- iwc – individual wooden case
- oc – original carton

SYMBOLS

THE FOLLOWING SYMBOLS ARE USED TO DENOTE

- Y Subject to CITES regulations when exporting these items outside the EU, see clause 13.
 - TP Objects displayed with a TP will be located at the Cadogan Tate warehouse and will only be available for collection from this location.
 - W Objects displayed with a w will be located in the Bonhams Warehouse and will only be available for collection from this location.
 - Δ Wines lying in Bond.
 - AR An Additional Premium will be payable to us by the Buyer to cover our Expenses relating to payment of royalties under the Artists Resale Right Regulations 2006. See clause 7 for details.
 - The Seller has been guaranteed a minimum price for the Lot, either by Bonhams or a third party. This may take the form of an irrevocable bid by a third party, who may make a financial gain on a successful Sale or a financial loss if unsuccessful.
 - \blacktriangle Bonhams owns the Lot either wholly or partially or may otherwise have an economic interest.
 - $\text{\textcircled{D}}$ This lot contains or is made of ivory. The United States Government has banned the import of ivory into the USA.
- *, †, *, G, Ω , α a see clause 8, VAT, for details.

DATA PROTECTION – USE OF YOUR INFORMATION

Where we obtain any personal information about you, we shall only use it in accordance with the terms of our Privacy Policy (subject to any additional specific consent(s) you may have given at the time your information was disclosed). A copy of our Privacy Policy can be found on our Website www.bonhams.com or requested by email from info@bonhams.com

Formulaire d'inscription et d'enchère

(Ordre d'achat en personne / en absence / en ligne / par téléphone)

Veuillez entourer le mode d'enchère ci-dessus.



Numéro d'identification
(réservé à l'administration)

Bonhams

Cette vente aux enchères sera conduite conformément aux conditions de vente de Bonhams et les enchères et les achats lors de la vente aux enchères seront réglementés par ces conditions. Vous devez lire les conditions conjointement avec les informations relatives aux ventes aux enchères qui énoncent les frais que vous devrez payer sur les achats que vous effectuez et les autres modalités se rapportant aux enchères et aux achats lors de la vente aux enchères. Avant de signer le présent formulaire, veillez à poser toutes les questions que vous pourriez avoir concernant les conditions. Ces conditions contiennent également certains engagements de la part des enchérisseurs et des acheteurs et limitent la responsabilité de Bonhams envers les enchérisseurs et les acheteurs.

Protection des données – utilisation de vos renseignements personnels

Lorsque nous obtenons des renseignements personnels vous concernant, nous les utiliserons uniquement conformément aux conditions de notre Politique relative à la confidentialité (sous réserve des consentements particuliers supplémentaires que vous aurez pu nous donner au moment de la communication de tels renseignements). Vous pouvez consulter notre Politique relative à la confidentialité sur notre site Internet (www.bonhams.com) ou demander à en recevoir un exemplaire par la poste en contactant notre service client à l'adresse suivante : Customer Services Department, 101 New Bond Street, Londres W1S 1SR Royaume-Uni ou par courriel à info@bonhams.com. Nous pouvons divulguer vos informations personnelles à n'importe quel membre de notre compagnie, ce qui comprend nos filiales, notre société de holding mère et ses filiales (enregistrées au Royaume-Uni ou ailleurs). Nous ne divulguons pas vos données à quiconque en dehors de notre compagnie, mais parfois nous vous adresserons des informations concernant nos biens et services, et également les produits de nos tiers, pour lesquels nous pensons que vous pourriez être intéressés.

Souhaitez-vous recevoir les informations de notre part par email? Par courrier?

Avis aux enchérisseurs.

Nous demandons à nos clients de fournir, au plus tard 24 heures avant la vente, une pièce d'identité comportant photo et date de naissance telle qu'un passeport, un permis de conduire ou une carte d'identité, et au cas où l'adresse ne figure pas sur la pièce d'identité, accompagnée d'un justificatif de domicile tel qu'une quittance d'eau/électricité ou un relevé bancaire ou de carte de crédit, etc. Les clients commerciaux doivent également fournir un exemplaire des statuts/documents d'enregistrement de la société, le nom, la raison sociale et l'adresse enregistrée de l'entité, la preuve documentaire de ses ayants droit économiques et directeurs, ainsi qu'une lettre autorisant la personne à enchérir au nom de la société. Le défaut de transmission de ces documents pourra entraîner le non-traitement ou l'inachèvement de vos enchères. Pour les lots de plus grande valeur, une lettre de référence de votre banque pourra également vous être demandée.

En cas de succès

Je viens chercher mes achats en personne

Je vous remercie de bien vouloir donner mes coordonnées aux transporteurs qui me transmettront un devis et j'accepte que vous leur communiquiez mes coordonnées afin qu'ils puissent me contacter.

Titre de la vente aux enchères: The Antiquities sale, de Louxor à Rome, voyage d'un passionné	Date de la vente: 7 Octobre 2021
N° de la vente: 27296	Lieu de la vente: Paris

Si vous n'assistez pas à la vente en personne, veuillez fournir les coordonnées des lots pour lesquels vous souhaitez faire une enchère au moins 24 heures avant la vente. Les enchères seront arrondies à la surenchère inférieure la plus proche. Veuillez consulter l'avis aux enchérisseurs publié dans le catalogue pour tout complément d'information se rapportant aux offres par téléphone, en ligne ou par écrit que Bonhams peut accepter en votre nom. Bonhams fera tout son possible pour exécuter ces ordres d'achat en votre nom mais ne sera pas tenu pour responsable en cas d'erreurs ou de manquement à exécuter ces offres d'achat.

Paliers d'enchère généraux:

€10 - 20010s	€10,000 - 20,0001,000s
€200 - 50020 / 50 / 80s	€20,000 - 50,0002,000 / 5,000 / 8,000s
€500 - 1,00050s	€50,000 - 100,0005,000s
€1,000 - 2,000100s	€100,000 - 200,00010,000s
€2,000 - 5,000200 / 500 / 800s	au-delà de €200,000à la discrétion du commissaire-priseur
€5,000 - 10,000500s	

Le commissaire-priseur peut, à sa discrétion, diviser les offres d'achat à tout moment.

Numéro client	Titre
Prénom	Nom
Nom de la société (pour l'envoi de la facture dans le cas échéant)	
Adresse	
Ville	Département/Région
Code postal	Pays
N° de téléphone portable	Téléphone (jour)
Téléphone (soir)	Télécopie
Numéro(s) préféré(s) pour les ordres d'achat par téléphone (indicatif du pays compris)	
Adresse courriel (en lettres majuscules)	
En complétant votre adresse email ci-dessus, vous autorisez Bonhams à envoyer à cette adresse des informations relatives aux ventes, données marketing et actualités de Bonhams. Bonhams ne participe pas à la vente ou l'échange d'adresses email.	
Je m'inscris pour faire des offres en tant que particulier <input type="checkbox"/>	Je m'inscris pour faire des offres en tant que client professionnel <input type="checkbox"/>
Si vous êtes inscrit à la TVA au sein de l'UE, veuillez saisir ici votre numéro : □□ / □□□ - □□□□ - □□	Veuillez cocher la case ci-contre si vous vous êtes déjà inscrit chez nous <input type="checkbox"/>

Remarque : tous les appels téléphoniques sont enregistrés.

Téléphone ou ordre d'achat en cas d'absence (T/A)	N° de lot	Description succincte	Offre d'achat maximale en Euros (hors prime et TVA)	Ordre d'achat de sécurité*

EN SIGNANT CE FORMULAIRE, VOUS RECONNAISSEZ AVOIR VU LE CATALOGUE DE VENTE, AVOIR LU ET COMPRIS NOS CONDITIONS DE VENTE DONT LES GARANTIES ACHETEURS ET VOUS ACCEPTEZ QU'ELLES VOUS SOIENT OPPOSABLES ET VOUS ACCEPTEZ DE PAYER LES FRAIS DE VENTE, TVA ET TOUTES AUTRES CHARGES MENTIONNÉES DANS LES AVIS AUX ENCHÉRISSSEURS. CECI AFFECTE VOS DROITS LÉGAUX.

Votre signature:

Date:

*Ordre d'achat de sécurité : une enchère maximale (hors prime et TVA de l'acheteur) devant être exécutée par Bonhams au cas où nous serions dans l'impossibilité de vous joindre par téléphone ou si la connexion venait à être coupée pendant les enchères.

N.B. Seuls les paiements provenant d'un compte dont le titulaire porte le même nom que celui indiqué sur la facture et le formulaire d'inscription aux enchères seront acceptés. Veuillez envoyer par courriel ou télécopie le formulaire d'inscription aux enchères et les renseignements demandés à l'adresse suivante :

Bonhams, Customer Services, 101 New Bond Street, Londres, W1S 1SR. Tél. : +44 (0) 20 7447 7447 Fax : +44 (0) 20 7447 7401, bids@bonhams.com

Bonhams France SAS, 4 Rue de la Paix, 75002 Paris. N° d'agrément 2007-638 - RCS Paris 500 772 652

Fra/05/19

Registration and Bidding Form

(Attendee / Absentee / Online / Telephone Bidding)

Please circle your bidding method above.

<input type="checkbox"/>	<input type="checkbox"/>	<input type="checkbox"/>	<input type="checkbox"/>
--------------------------	--------------------------	--------------------------	--------------------------

Paddle number (for office use only)

Bonhams

This sale will be conducted in accordance with Bonhams' Conditions of Sale and bidding and buying at the Sale will be regulated by these Conditions. You should read the Conditions in conjunction with the Sale Information relating to this Sale which sets out the charges payable by you on the purchases you make and other terms relating to bidding and buying at the Sale. You should ask any questions you have about the Conditions before signing this form. These Conditions also contain certain undertakings by bidders and buyers and limit Bonhams' liability to bidders and buyers.

Data protection – use of your information

Where we obtain any personal information about you, we shall only use it in accordance with the terms of our Privacy Policy (subject to any additional specific consent(s) you may have given at the time your information was disclosed). A copy of our Privacy Policy can be found on our website (www.bonhams.com) or requested by post from Customer Services Department, 101 New Bond Street, London W1S 1SR United Kingdom or by e-mail from info@bonhams.com. We may disclose your personal information to any member of our group which means our subsidiaries, our ultimate holding company and its subsidiaries (whether registered in the UK or elsewhere). We will not disclose your data to anyone outside our group but we may from time to time provide you with information about goods and services which we feel maybe of interest to you including those provided by third parties.

Would you like to receive information from us by email? or post

Notice to Bidders.

At least 24 hours before the Sale, clients must provide government or state issued photographic proof of ID and date of birth e.g. - passport, driving licence - and if not included in ID document, proof of address e.g. - utility bill, bank or credit card statement etc. Corporate clients should also provide a copy of their articles of association / company registration documents, and the entities name and registered address, documentary proof of its beneficial owners and directors, together with a letter authorising the individual to bid on the company's behalf. Failure to provide this may result in your bids not being processed or completed. For higher value lots you may also be asked to provide a bank reference.

If successful

I will collect the purchases myself
Please arrange shippers to contact me with a quote and I agree that you may pass them my contact details.

Sale title:	The Antiquities sale, de Louxor à Rome, voyage d'un passionné	Sale date:	7 Octobre 2021
Sale no.	27296	Sale venue:	Paris
If you are not attending the sale in person, please provide details of the Lots on which you wish to bid at least 24 hours prior to the sale. Bids will be rounded down to the nearest increment. Please refer to the Notice to Bidders in the catalogue for further information relating to Bonhams executing telephone, online or absentee bids on your behalf. Bonhams will endeavour to execute these bids on your behalf but will not be liable for any errors or failing to execute bids.			
General Bid Increments:			
€10 - 200	by 10s	€10,000 - 20,000	by 1,000s
€200 - 500	by 20 / 50 / 80s	€20,000 - 50,000	by 2,000 / 5,000 / 8,000s
€500 - 1,000	by 50s	€50,000 - 100,000	by 5,000s
€1,000 - 2,000	by 100s	€100,000 - 200,000	by 10,000s
€2,000 - 5,000	by 200 / 500 / 800s	above €200,000	at the auctioneer's discretion
€5,000 - 10,000	by 500s	The auctioneer has discretion to split any bid at any time.	
Customer Number		Title	
First Name		Last Name	
Company name (to be invoiced if applicable)			
Address			
City		County / State	
Post / Zip code		Country	
Telephone mobile		Telephone daytime	
Telephone evening		Fax	
Preferred number(s) in order for Telephone Bidding (inc. country code)			
E-mail (in capitals)			
By providing your email address above, you authorise Bonhams to send to this address information relating to Sales, marketing material and news concerning Bonhams. Bonhams does not sell or trade email addresses.			
I am registering to bid as a private buyer <input type="checkbox"/>		I am registering to bid as a trade buyer <input type="checkbox"/>	
If registered for TVA in the EU please enter your registration here: <input type="checkbox"/> <input type="checkbox"/> / <input type="checkbox"/> <input type="checkbox"/> - <input type="checkbox"/> <input type="checkbox"/> <input type="checkbox"/> <input type="checkbox"/> - <input type="checkbox"/> <input type="checkbox"/>		Please tick if you have registered with us before <input type="checkbox"/>	

Please note that all telephone calls are recorded.

Telephone or Absentee (T / A)	Lot no.	Brief description	MAX bid in EUR (excluding premium & TVA)	Covering bid*

BY SIGNING THIS FORM YOU AGREE THAT YOU HAVE SEEN THE CATALOGUE AND HAVE READ AND UNDERSTOOD OUR CONDITIONS OF SALE INCLUDING BUYER'S WARRANTIES AND WISH TO BE BOUND BY THEM, AND AGREE TO PAY THE BUYER'S PREMIUM, VAT AND ANY OTHER CHARGES MENTIONED IN THE NOTICE TO BIDDERS. THIS AFFECTS YOUR LEGAL RIGHTS.

Your signature:

Date:

* Covering Bid: A maximum bid (exclusive of Buyers Premium and TVA) to be executed by Bonhams only if we are unable to contact you by telephone, or should the connection be lost during bidding.

NB. Payment will only be accepted from an account in the same name as shown on the invoice and Auction Registration form.

Please email or fax the completed Auction Registration form and requested information to:

Bonhams, Customer Services, 101 New Bond Street, London, W1S 1SR. Tel: +44 (0) 20 7447 7447 Fax: +44 (0) 20 7447 7401, bids@bonhams.com

Bonhams France SAS, 4 Rue de la Paix, 75002 Paris. N° d'agrément 2007-638 - RCS Paris 500 772 652





Bonhams
4 Rue de La Paix
Paris, 75002

+33 (0) 1 42 61 10 10
bonhams.com

AUCTIONEERS SINCE 1793