

JEWELLERY

Tuesday 2 December 2014

Oxford



Bonhams



JEWELLERY

Tuesday 2 December 2014 at 11.00
Oxford

BONHAMS

Banbury Road
Shipton-on-Cherwell
Kidlington
Oxford
OX5 1JH
www.bonhams.com

VIEWING

Saturday 29 November 9.00 to 12.00
Monday 1 December 9.00 to 16.30
Tuesday 2 December 9.00 to 11.00

BIDS

+44 (0) 20 7447 7448
+44 (0) 20 7447 7401 fax
To bid via the internet
please visit www.bonhams.com

Please provide details of the lots on which you wish to place bids at least 24 hours prior to the sale.

New bidders must also provide proof of identity when submitting bids. Failure to do this may result in your bids not being processed.

TELEPHONE BIDDING

Bidding by telephone will only be accepted on lots with a low estimate in excess of £500.

LIVE ONLINE BIDDING IS AVAILABLE FOR THIS SALE

Please email bids@bonhams.com with "Live bidding" in the subject line 48 hours before the auction to register for this service

Bonhams 1793 Limited

Registered No. 4326560
Registered Office: Montpellier Galleries
Montpellier Street, London SW7 1HH

+44 (0) 20 7393 3900
+44 (0) 20 7393 3905 fax

JEWELLERY ENQUIRIES

Frances Noble FGA DGA
frances.noble@bonhams.com
+44 (0) 1865 853 653

Louise Dennis FGA DGA
louise.dennis@bonhams.com
+44 (0) 1865 853 654

Jessica Edmonds
jessica.edmonds@bonhams.com
+44 (0) 1865 853 663

Georgina Roberts
georgina.roberts@bonhams.com
+44 (0) 1865 853 652

SALE NUMBER: 21842

CATALOGUE: £8

Bonhams 1793 Ltd Directors

Robert Brooks Co-Chairman,
Malcolm Barber Co-Chairman,
Colin Sheaf Deputy Chairman,
Matthew Girling Global CEO,
Patrick Meade Global CEO,
Geoffrey Davies, Jonathan Horwich,
James Knight, Caroline Oliphant,
Hugh Watchorn.

CUSTOMER SERVICES

Monday to Friday 8.30am to 6pm
+44 (0) 20 7447 7447

Please see back of catalogue for important notice to bidders

ILLUSTRATIONS

Front cover: Lot 279
Back cover: Lot 224
Inside front cover: Lot 64
Inside back cover: Lot 290

IMPORTANT INFORMATION

The United States Government has banned the import of ivory into the USA. Lots containing ivory are indicated by the symbol Φ printed beside the lot number in this catalogue.

Please note that as a result of recent legislation ruby and jadeite gemstones of Burmese (Myanmar) origin may not be imported into the US. Rubies and jadeite of non-Burmese origin require certification before import into the US. Items affected are marked with a symbol \approx

IMPORTANT NOTICE REGARDING IMPORTATION INTO THE UNITED STATES OF CORUM, FRANCK MULLER, PIAGET AND ROLEX WATCHES

Bonhams cannot arrange for the delivery of Corum, Franck Muller, Piaget and Rolex watches into The United States. The buyer or designated agent may collect the property in the country of sale.

Please also note that in some circumstances we are unable to ship the watch with its strap due to certain import restrictions.

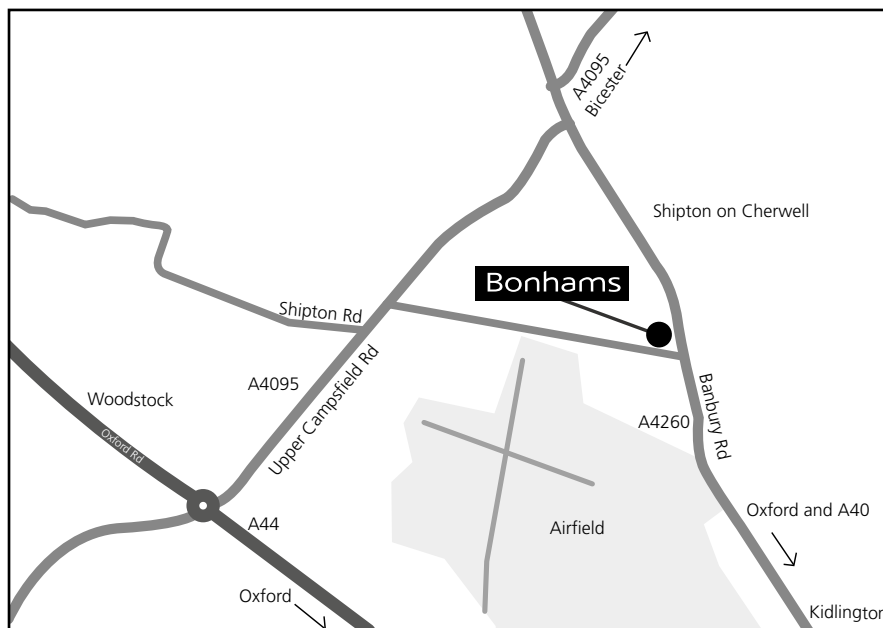


Bonhams UK Ltd Directors

Colin Sheaf Chairman, Jonathan Baddeley,
Antony Bennett, Matthew Bradbury,
Harvey Cammell, Simon Cottle, Andrew Currie,
David Dallas, Paul Davidson, Jean Ghika,
Charles Graham-Campbell, Miranda Grant,
Richard Harvey, Robin Hereford, Asaph Hyman,
Charles Lanning, Sophie Law, Fergus Lyons,
Paul Maudsley, Gordon McFarlan,

Andrew McKenzie, Simon Mitchell, Jeff Muse,
Mike Neill, Charlie O'Brien, Giles Peppiatt,
Peter Rees, Julian Roup, Iain Rushbrook,
John Sandon, Tim Schofield, Veronique Scorer,
James Stratton, Roger Tappin, Ralph Taylor,
Shahin Virani, David Williams,
Michael Wynell-Mayow, Suzannah Yip.

SALE INFORMATION



By Rail: Oxford train station

Saleroom

Banbury Road
Shipton on Cherwell
Kidlington
Oxford
OX5 1JH

+44 (0) 1865 853 640
+44 (0) 1865 372 722 fax

Condition Reports

We highly recommend that potential buyers make efforts to inspect the lots in Oxford in person, during our public viewing.

We expect that there may be a large number of condition enquiries, and the effect will be that clients submitting long and elaborate requests are likely to be dealt with after those with short and specific requests.

By Road

From London:
Exit the M40 at junction 9. Take the A34 to Oxford and then the A44 to Woodstock. At Woodstock roundabout take the 3rd exit towards Bicester (A4095). Take the first right and Bonhams is at the far end on the left.

From the A40 West:
Take the A40 towards Oxford. Take the first left at the Eynsham roundabout. Drive through Church Hanborough and then turn right on to the A4095. Drive through Bladon and straight over the Woodstock roundabout. Take the first right and Bonhams is at the far end on the left.

Shipping Information

Unless you wish to use your own shipping company, please contact any of the below:

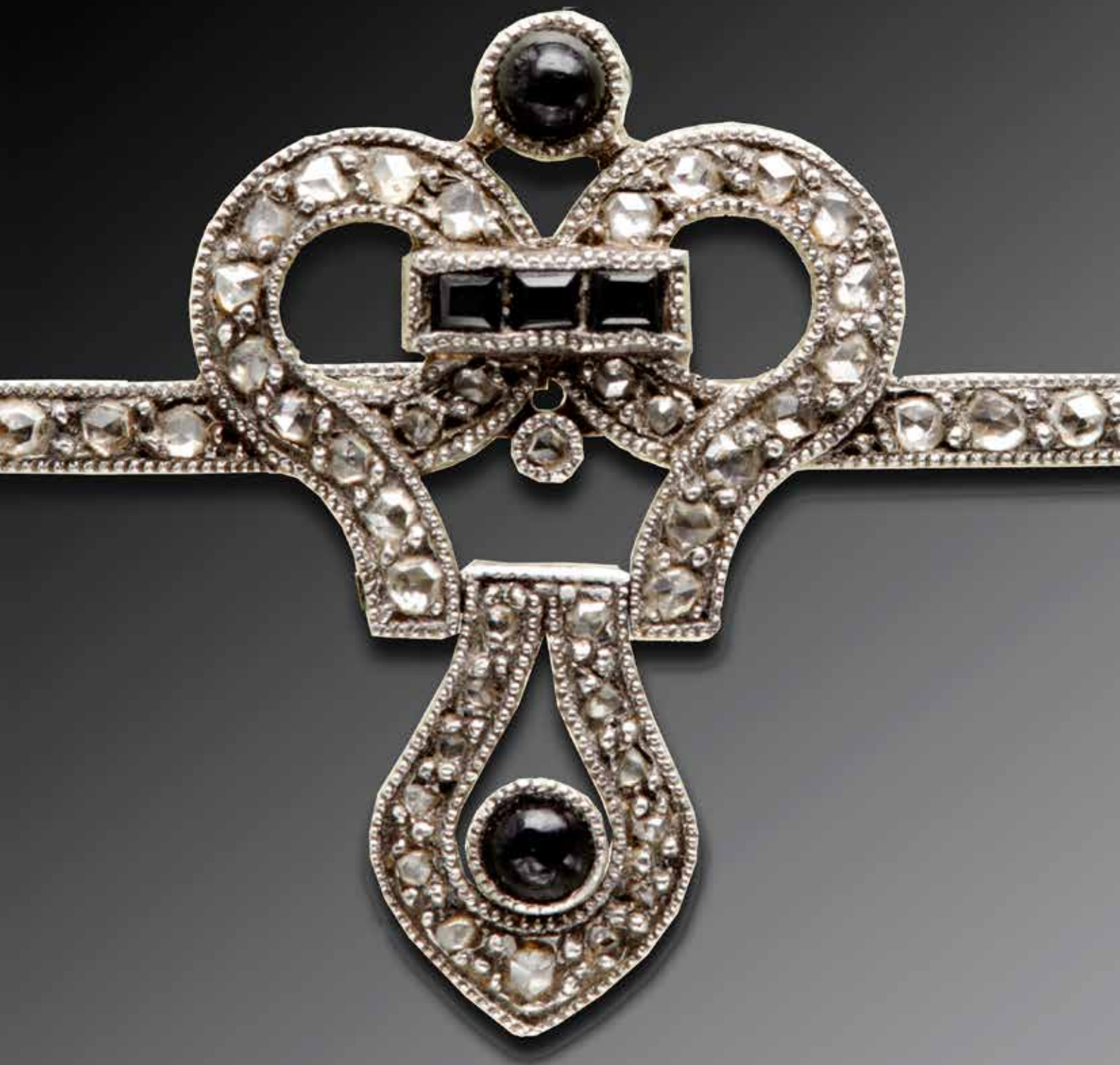
Mail Boxes Etc.
266 Banbury Road,
Oxford OX2 7DL
+44 (0)1865 514 655
info@mbesummertown.co.uk

Or

Pack & Send
3 Botley Road, Oxford OX2 0AA
+44 (0)1865 260 610
oxford@packsend.co.uk

You can also contact shipping@bonhams.com with any difficulties or questions arising from the above or for any CITES requirements.

JEWELLERY



1≈

A 9CT GOLD RUBY AND DIAMOND SET NECKLACE

Of textured brick-link design, with crossover detail, set to the front with ruby and diamond highlights, with maker's mark 'RCK' for Roy Cecil King, *length 41cm.*

£800 - 1,200

2≈

A RUBY AND DIAMOND NECKLACE AND EARRINGS SUITE

The necklace with shaped fluted panel, centred with an oval-cut ruby between single-cut diamond channels, to a back chain of navette-shaped panel links, together with half hoop earrings of conforming design, on post and hinged back fittings, two colour precious metal mounted, *necklace length approximately 45cm, earrings length 1.6cm.*

(2)

£700 - 900

3

A YELLOW PRECIOUS METAL FANCY-LINK BRACELET

Composed of alternate oval and belcher-shaped links of polished and frosted finish, *length approximately 19.5cm.*

£700 - 900

4

A FRENCH GOLD BROAD-LINK BRACELET

Of repeating burr design, with lozenge-shaped maker's mark and eagle's head guarantee mark, *length 19.5cm.*

£1,200 - 1,800

5

A DIAMOND CLUSTER RING

The flowerhead cluster of graduated brilliant-cut diamond in raised claw setting, between trifurcated shoulders, *total diamond weight approximately 1.80ct.*

£800 - 1,200

6

CARTIER: A PAIR OF DIAMOND SET EARCLIPS

Each convex openwork panel of stylised foliate design, horizontally set with channels of graduated brilliant-cut diamonds, with hinged clip fittings, signed and numbered 'L3015', *length 2.9cm.*

£600 - 800

7

A YELLOW CHALCEDONY AND DIAMOND BROOCH

The circular cabochon yellow chalcedony in collet setting, framed by a pierced scrolled border of rose and lasque-cut diamonds, two colour precious metal mounted, *diameter 4cm.*

£500 - 700



8

A THREE COLOUR PRECIOUS METAL BRACELET

Composed of seven articulated strands of frosted and polished finish, *length 19.5cm.*

£800 - 1,200

9

A YELLOW PRECIOUS METAL BRACELET AND EARRINGS SUITE

The fancy articulated brick-link bracelet accompanied by a pair of earrings ensuite, with post and butterfly fittings, each stamped '750', *bracelet length 19.5cm.*

£700 - 900

10

A YELLOW PRECIOUS METAL FANCY-LINK BRACELET

Composed of wide ropetwist-links with part textured finish, to clasp stamped '750', *length 20.5cm.*

£700 - 900

10A

AN ENAMEL, PEARL AND DIAMOND SET BROOCH AND BRACELET

The brooch with an openwork foliate scrolled panel, heightened in shades of green and blue enamel, set with half pearls and lasque-cut diamonds in closed-back settings, suspending three similarly set graduated drops below, to later fitting, together with a bracelet, of matched design, composed of green enamel foliate links with diamond accents, spaced by mother o' pearl panels, to later clasp, with loose links, (all pearls untested for origin), *brooch length 6.5cm, bracelet length 20cm.* (2)

£500-700



1

2

5

6

3

4

7

9 (part)

8

9 (part)

10

11

A PAIR OF ONYX AND DIAMOND FLOWERHEAD EARRINGS AND A PAIR OF MABE PEARL EARSTUDS

The first with fluted onyx flowerhead panels, each centred with a brilliant-cut diamond star-shaped cluster, on post and hinged clip fittings, white precious metal mounted, stamped '750', the second with heart-shaped mabe pearls, on post and butterfly fittings, yellow precious metal mounted, stamped '750', *lengths 2.05cm and 1.7cm respectively. (2)*

£500 - 700

12

A SAPPHIRE SET NECKLACE AND BRACELET SUITE

Each composed of shaped panel links of alternate polished and frosted finish, to fittings with cabochon sapphire terminals, signed 'Ronco' and stamped '750', white precious metal mounted, cased, *bracelet length 19cm.*

£800 - 1,200

13

A WHITE PRECIOUS METAL COLLAR NECKLACE AND PAIR OF EARSTUDS

The articulated collar of shaped rectangular links with alternate frosted and polished finish, stamped '750', together with a pair of cabochon gem set and diamond earstuds, on post and butterfly fittings, also stamped '750', *earrings length 1.3cm. (2)*

£500 - 700

14

A BLACK CULTURED PEARL NECKLACE AND MATCHED EARSTUDS

The single row of slightly graduated baroque-shaped cultured pearls to diamond set clasp, with import mark for 9ct white gold, together with a pair of unassociated black cultured pearl and diamond cluster earclips, the borders claw set with marquise and brilliant-cut diamonds, on hinge and post fittings, stamped '750', *necklace length 49cm. (2)*

£500 - 700

15

A PAIR OF DIAMOND SINGLE STONE EARRINGS

Each round brilliant-cut diamond claw set to a pierced circular panel surround, with stem below, on post and hinged clip fittings, white precious metal mounted, *total diamond weight approximately 1ct, length 1.65cm.*

£500 - 700

16

A PAIR OF EMERALD AND DIAMOND CLUSTER EARSTUDS

The snowflake clusters of claw set brilliant-cut diamonds and circular-cut emeralds, mounted in white precious metal, on post and butterfly fittings, *diameter 1.4cm.*

£800 - 1,000

17

THREE GEM SET RINGS

Comprising a sapphire three stone ring, the oval mixed-cut sapphires gypsy set to a tapered band, of hammered finish, a sapphire and diamond cluster ring, the openwork panel set with channels of square-cut sapphires to a rose-cut diamond border, between scrolled shoulders, (sapphires untested for natural versus synthetic origin), and a vari gem-set half hoop ring, with Portuguese marks, *ring sizes K, J½ and P. (3)*

£500 - 600

18

A PAIR OF DIAMOND EARRINGS

Each with brilliant-cut diamond cluster surmount and tear-shaped drop below, the reverse stamped 'Ritani' and 'Pt950', on post fittings and butterfly fittings stamped '750', *length 17mm.*

£500 - 700

19

A VARI GEM-SET INSECT BROOCH

The malachite cabochon body overlaid with open textured wings, to a baroque pearl head with circular-cut ruby eyes and rose-cut diamond set collar, (pearl untested for origin, rubies untested for natural versus synthetic origin), *length 3.4cm.*

£600 - 800

20

AN EMERALD AND DIAMOND DRESS RING

The millegrained stepped panel setting with a rectangular step-cut emerald to one side, bordered by channels of brilliant-cut diamonds, to tapered shank, 18ct gold mounted, *ring size O½.*

£500 - 600

21

AN EMERALD AND DIAMOND PANEL RING

The rectangular panel of chequerboard design, alternately set with old-cut diamonds and calibré-cut emeralds, between pierced decorated shoulders, *panel length 2cm, ring size N.*

£500 - 700



12 (part)



11



14 (part)



13 (part)



14 (part)



13 (part)



15

16

12 (part)



17



18



19



20



21

22

A 9CT GOLD BROAD-LINK BRACELET

Of polished brick-link design, with maker's mark 'B&S', cased by Garrards, *length 19cm.*

£500 - 600

23

GARRARD & CO: A 14CT GOLD BROOCH

The stylised ribbon of openwork reeded form with ropetwist wirework border, signed and with import marks for London, in fitted maker's case, *length 4.8cm.*

£200 - 300

24

A VICTORIAN DIAMOND SNOWFLAKE BROOCH

The openwork snowflake panel with central old-cut diamond cluster, to scrolled borders of old, single and rose-cut diamonds, the reverse with later fitting, in fitted case signed 'Jays, Oxford St London', *length 3.3cm.*

£800 - 1,200

25

A DIAMOND SET BROOCH

The openwork convex panel centred with a brilliant and single-cut diamond cluster, to a radiating wirework surround, highlighted by further single-cut diamonds, *length 3.3cm.*

£600 - 800

By family repute this brooch was converted from a ring by Charles de Temple.



30A

26

A RUBY AND DIAMOND SET NOVELTY BIRD BROOCH

Stylistically modelled as a standing chick with open beak and textured body, highlighted by a cabochon ruby eye framed by single-cut diamonds, with French gold export marks and lozenge-shaped maker's mark, *length 4.2cm.*

£500 - 600

27

AN 18CT GOLD PILL BOX

Of hinged shell-shaped outline, with wavy engraved decoration, hallmarked and indistinctly signed 'C&F' for Cropp & Farr, *length 3.5cm.*

£400 - 600

28

A 9CT WHITE GOLD AND MOTHER O' PEARL GENTLEMAN'S DRESS SET

Comprising a pair of cufflinks, four buttons and two studs, each with mother o' pearl panels with central diamond highlight, to reed and ribbon border, 9ct white gold mounted, contained in Harrods case, *cufflinks panel diameter 1.4cm.*

£600 - 800

29

A FANCY-LINK NECKLACE

Composed of ropetwist-links of alternate textured, reeded and polished finish, yellow precious metal mounted, cased, *length 44cm.*

£500 - 700

30

A 14CT GOLD FANCY-LINK BRACELET

The pierced and textured bracelet of abstract design and graduated articulated form, with import marks for London 1972, signed 'MFG', *length 19cm.*

£500 - 700

30A

A CHARM BRACELET

The 9ct gold open curb-link bracelet suspending a collection of assorted charms, to include a horse and carriage, a log cabin and an enamelled roulette wheel, *length 18cm.*

£350-450



By Appointment to
H.M. THE QUEEN
GOLD SMITHS &
CROWN JEWELLERS
GAR RARD & CO
12, ROBERT STREET W.

JAYS
11, ROBERT STREET W.

By Appointment to
H.M. THE QUEEN
GOLD SMITHS &
CROWN JEWELLERS
GAR RARD & CO
12, ROBERT STREET W.

22



25



26



23



24



28



27



29

30

31
MIKIMOTO: A TRIPLE STRAND CULTURED PEARL BRACELET
Comprising three rows of uniform cultured pearls of pale pink hue, measuring approximately 6.5mm in diameter, to a foliate engraved panel clasp with smaller cultured pearl highlight, signed and stamped 'k14', in fitted maker's case, *length 17.5cm.*

£400 - 500

32
A NATURAL PEARL SET PENDANT NECKLACE
The central natural pear-shaped pearl drop, mounted above a pair of rose-cut diamond set wings, (some diamonds missing), with smaller pearl drop suspended below, on uniform single row pearl back chain, to slim 9ct gold barrel clasp, (remaining pearls untested for origin), *principal pearl dimensions 10.2mm x 8.65mm approximately, necklace length 43cm.*

£800 - 1,000

Accompanied by a Pearl Identification Report issued from AnchorCert, dated 8 October 2014, report no. 20019553, stating that the principal pear-shaped pearl is of natural saltwater origin.

33
A CULTURED PEARL NECKLACE WITH DIAMOND SET CLASP
The single strand of graduated cultured pearls to a circular cluster pendant, set with graduated old-cut diamonds, *total diamond weight approximately 1.10ct, length 52cm.*

£600 - 800

34
A PEARL AND DIAMOND RING
Obliquely set with old-cut diamonds and a single pearl, to crossover shoulders of rose-cut diamonds, the shank with Austrian marks, (pearl untested for origin), *ring size L.*

£500 - 600

35
A PAIR OF CULTURED PEARL EARSTUDS
Each cultured pearl measuring approximately 11mm in diameter, to post fittings, cased.

£500 - 600

Accompanied by a retailer's report card, no. 5016, stating that the cultured pearls are of South Sea origin.

36
A CULTURED PEARL AND DIAMOND CLUSTER RING
The central cultured pearl bordered by eight old-cut diamonds in claw setting, to an 18ct gold mount, *ring size Q½.*

£700 - 900

37
A DIAMOND THREE STONE RING
The round brilliant-cut diamonds in claw setting, two colour precious metal mounted, *total diamond weight approximately 2.40ct, ring size N.*

£1,500 - 2,000

38
A LATE VICTORIAN DIAMOND FIVE STONE RING
The graduated old-cut diamonds claw set to an 18ct gold mount, hallmarked for Chester 1893, *ring size M½.*

£600 - 800

39
A CULTURED PEARL NECKLACE WITH DIAMOND SET CLASP
The single strand of uniform cultured pearls measuring approximately 7.5mm to 8mm in diameter, to a tiered cluster panel clasp of abstract design, set with brilliant and single-cut diamonds, white precious metal mounted, *length 84cm.*

£600 - 800

40
A CULTURED PEARL AND DIAMOND NECKLACE
The fancy-link necklace suspending two cultured pearl drops of white and black tint, each surmounted by a brilliant-cut diamond set collar, to a hinged heart-shaped slider pendant, pavé set with further brilliants, with 18ct gold import marks, signed 'SJP', *total length 68cm.*

£500 - 700

41
A DIAMOND AND CULTURED PEARL BOW BROOCH AND TWO PAIRS OF EARRINGS
The brooch suspending a baroque cultured pearl drop, below an openwork ribbon bow surmount of brilliant-cut diamonds, the reverse stamped '18k 750', together with a pair of mabe pearl and diamond earrings, on post and hinged clip fittings, 18ct white gold mounted, and a pair of cultured pearl earpendants, with reeded half hoop surmounts, also on post and hinged clip fittings, 18ct gold mounted, *brooch length 2.9cm. (3)*

£600 - 800

42
TWO PAIRS OF CULTURED PEARL AND SAPPHIRE EARRINGS
The first earrings with trefoil sapphire surmounts, each suspending a teardrop-shaped mabe pearl, on hinged fittings, 18ct gold mounted, the second pair with trefoil sapphire surmounts, each suspending a cultured pearl drop below, on post fittings, *lengths 3.8cm and 2.2cm respectively. (2)*

£600 - 800

43
A CULTURED PEARL CHOKER NECKLACE AND EARSTUDS
The three row uniform cultured pearl necklace with bar spacers, to cluster clasp, to 9ct gold cluster clasp, with brilliant-cut diamond highlights, and a pair of matching cluster earstuds, 9ct gold mounted, *necklace length 32.5cm, earstuds diameter 1.6cm. (2)*

£500 - 700

44
A CULTURED PEARL AND DIAMOND LINE BRACELET
The line of uniform cultured pearls measuring approximately 6mm in diameter, spaced by pair of brilliant-cut diamonds, to clasp stamped '750', white precious metal mounted, *total diamond weight approximately 2.10ct, length 17.5cm.*

£1,500 - 2,000



31



34



35



36



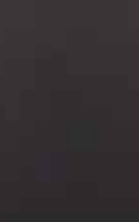
37



38



41



40



42



43



33



32



44

45

A DIAMOND SET PENDANT EARRINGS SUITE

Each square cluster drop of princess, baguette and brilliant-cut diamonds, suspended below a single brilliant-cut diamond surmount, the pendant on an 18ct white gold fine trace-link chain, the earrings on post and butterfly fittings, *pendant length 2.15cm. (2)*

£1,000 - 1,200

46

AN EDWARDIAN STYLE DIAMOND PENDANT

Of foliate design, with central circular pendant drop and ribbon bow surmount, set throughout with brilliant-cut diamonds, to trace-link back chain, stamped '750', *total diamond weight approximately 1.80ct, necklace length 67cm.*

£1,100 - 1,200

47≈

A JADE PENDANT NECKLACE AND A PAIR OF EAR PENDANTS

The pendant with shaped rectangular jade panel drop, with pierced and carved decoration, below an openwork flowerhead panel and smaller jade panel surmount, to a fine trace-link chain, together with jade ear pendants of similar design, on wire fittings, (all jade untested for treatments and enhancements), *pendant length 5.4cm. (2)*

£600 - 800

48

AN 18CT WHITE GOLD AND DIAMOND SET NECKLACE AND EARSTUDS SUITE

The necklace composed of graduated circular wirework panels of fluid abstract design, highlighted by brilliant-cut diamonds, to a spiga-link back chain, the earstuds of conforming design, on post and butterfly fittings, *necklace length 43cm, earstuds diameter 0.9cm. (2)*

£500 - 700

This suite was purchased from the designer Jane Watling-Read of Lacock.

49≈

A PAIR OF EARLY 20TH CENTURY JADE AND DIAMOND EAR PENDANTS

Each circular jade panel drop with rose-cut diamond set hoop suspension, surmounted by pierced and millegrained panels of further rose and old-cut diamonds, on post and butterfly fittings, (jade untested for treatments and enhancements), *length 3.55cm.*

£500 - 700

50≈

A JADE SET BRACELET AND A PAIR OF EAR PENDANTS

The bracelet centred with five marquise-shaped panels, between oval and husk decorated links, to clasp stamped '14k', together with a pair of jade ear pendants, each with oval bead drop beneath foliate cap and loop fittings, (all jade untested for treatments and enhancements), *bracelet length 16cm, ear pendants length 3cm. (2)*

£600 - 800

51

A BELLE EPOQUE PEARL AND DIAMOND RING

The pierced cluster panel of stylised flowerhead design, centred with a half pearl, to old and single-cut diamond borders, (pearl untested for origin), *ring size M½.*

£800 - 1,200

52

AN EARLY 20TH CENTURY EMERALD AND DIAMOND PANEL RING

The hexagonal step-cut emerald collet set within a border of brilliant-cut diamonds, to scroll pierced gallery, white precious metal mounted, *ring size P½.*

£600 - 800

53

AN EMERALD AND DIAMOND THREE STONE RING

The rectangular step-cut emerald in four claw setting, between baguette-cut diamond shoulders, 18ct white gold mounted, signed 'T.O'D.', *ring size I½.*

£800 - 1,200

54

A DIAMOND SET NECKLACE

The wishbone-shaped necklace spaced by graduated brilliant-cut diamonds, to a flattened-link back chain, with frosted finish throughout, white precious metal mounted, stamped '750', *length 42.5cm.*

£600 - 800

55

A DIAMOND SPRAY BROOCH, CIRCA 1950

The stylised foliate spray set with channels of brilliant and single-cut diamonds, white precious metal mounted, *length 5.4cm.*

£600 - 800

56≈

A JADE AND DIAMOND CLUSTER RING AND A JADE SINGLE STONE RING

The first with an oval jade cabochon in four claw setting, to pierced foliate shoulders and border of brilliant and single-cut diamonds, white precious metal mounted, the second with a similar jade cabochon in claw setting, between engraved shell-shaped shoulders, yellow precious metal mounted, (all jade untested for treatments and enhancements), *ring sizes M and L respectively. (2)*

£1,000 - 1,500

57

A DIAMOND SET NECKLACE

The fine-link chain designed as a line of spectacle set brilliant-cut diamonds, to clasp stamped 'k18' and 'D065', white precious metal mounted, *length 42cm.*

£300 - 500



45



46



47



48



49



50 (part)



51



52



53



54



55



56



50 (part)



57



57A

57A

A SAPPHIRE AND DIAMOND CLUSTER RING

Centred with three circular mixed-cut sapphires, to a shaped old-cut diamond set border, between pierced foliate shoulders, gold mounted, ring size N.

£700-900

58

AN EMERALD AND DIAMOND BROOCH

The openwork panel of quatrefoil outline, bordered by rose and lasque-cut diamonds, to later added cluster of step-cut emeralds, white precious metal mounted, length 2.7cm.

£700 - 900

59[≈]

A PEARL, RUBY AND DIAMOND BROOCH

The scrolling openwork panel centred with a half pearl and old-cut diamond cluster, framed by further graduated pearls, mixed-cut rubies, old and lasque-cut diamonds, (pearls untested for origin), width 4cm.

£800 - 1,200



64A

60

A GEM SET BROOCH/PENDANT

The openwork cartouche panel with central oval green agate cabochon, to scrolled borders of single, rose and lasque-cut diamonds, suspending three later detachable cultured pearl drops, each surmounted by a fluted diamond set cap, the panel reverse with Portuguese marks and later fittings, length 6.4cm.

£800 - 1,200

61

A PERIDOT AND DIAMOND BROOCH

The oval mixed-cut peridot claw set within an openwork border of graduated old-cut diamonds, surmounted by a similarly set ribbon bow, the reverse with later brooch fitting, length 3.1cm.

£700 - 900

62[≈]

A RUBY AND DIAMOND BROOCH

The openwork scrolling foliate panel collet set with oval-cut rubies, to channels of old and rose-cut diamonds, suspending a pear-shaped ruby and old-cut diamond drop below, two colour precious metal mounted, width 4.8cm.

£700 - 900

63

A CHRYSOPRASE, DIAMOND AND SYNTHETIC RUBY BROOCH

The chrysoprase panel carved to depict an Egyptian sphinx, within an openwork rectangular border of square-cut synthetic rubies, highlighted to the corners with old-cut diamonds, the two colour precious metal mount with Portuguese marks, length 4.1cm.

£800 - 1,200

64

A ST ESPIRIT WHITE PASTE SET PENDANT, ASSORTED PASTE AND VAUXHALL GLASS JEWELLERY, A GEORGE III MEMORIAL RING AND MISCELLANEOUS ITEMS

The first pendant of typical triple section design, with a dove in flight (Holy Spirit) holding an olive branch, the pendant contained in fitted case, silk signed 'Clarke, 13 Sloane Street', together with assorted Victorian paste star brooches, a fleur-de-lys pendant, graduating crescent brooches, a simulated pearl necklace with pendant, various Vauxhall glass brooches, etc, a George III gold glazed memorial ring, the reverse with contemporary inscription, a 19th century fob seal on belcher-link chain, two enamelled butterfly brooches, a pair of lorgnettes and miscellaneous items, contained in a Victorian jewellery box.

£700 - 900

64A

A LATE 19TH CENTURY DIAMOND AND SAPPHIRE HEARTS BROOCH

The entwined openwork hearts framed by old-cut diamonds, surmounted by a pierced coronet of cushion-shaped sapphires and similarly cut diamonds, gold and silver mounted, in fitted Tessiers case, length 3.4cm.

£700-£900



58



60



61



59



62



63

65

A CULTURED PEARL AND DIAMOND SET PENDANT NECKLACE

The pendant with shaped scroll pierced panels edged with brilliant-cut diamonds, suspending a cultured pearl drop of approximately 10mm below, to a flattened-link back chain with 18ct gold import marks, signed 'SJP', *length 43.5cm.*

£500 - 700

66

A DIAMOND CROSS PENDANT

Claw set with eleven stones, comprising princess-cut and modified princess-cut diamonds, white precious metal mounted, *length 3.2cm.*

£800 - 1,200

67

A DIAMOND HORSESHOE PENDANT NECKLACE

The horseshoe pavé set with brilliant-cut diamonds, signed and stamped '750', suspended from an 18ct white gold fine curb-link chain, *pendant length 2.8cm.*

£600 - 800

68

A DIAMOND FIVE STONE RING

The graduated old-cut diamonds in claw setting, to white precious metal mount stamped '18ct', *total diamond weight approximately 1.30ct, ring size S.*

£600 - 800

69

A SAPPHIRE AND DIAMOND CLUSTER RING

The oval mixed-cut sapphire claw set within a millegrained border of old-cut diamonds, between single-cut diamond set shoulders, the shank stamped 'plat 18ct', inscribed, *ring size Q.*

£600 - 800

70

No lot

71

AN ART DECO DIAMOND RING

The principal round brilliant-cut diamond in square setting, between stepped shoulders of single-cut diamonds, the white precious metal mount stamped 'plat', *principal diamond weight approximately 0.55ct, ring size L.*

£700 - 800

72

A SAPPHIRE AND DIAMOND CLUSTER RING

The oval mixed-cut sapphire claw set within a brilliant-cut diamond border, 18ct gold mounted, *ring size Q.*

£600 - 700

73

A DIAMOND THREE STONE RING

Claw set with three brilliant-cut diamonds, with central raised stone, white precious metal mounted, the shank stamped '14k', *total diamond weight approximately 1ct, ring size J.*

£800 - 1,000

74

A PINK SAPPHIRE AND DIAMOND RING

The round mixed-cut pink sapphire claw mounted, within outer scroll diamond setting extending along one shoulder, white precious metal mounted, shank stamped '14k', *ring size M.*

£500 - 700

75

A SAPPHIRE AND DIAMOND THREE STONE RING

The central brilliant-cut diamond collet set between two circular mixed-cut sapphires, 18ct yellow gold mounted, *ring size M.*

£500 - 600

76

A PAIR OF BAGUETTE-CUT DIAMOND EARRINGS

Each half hoop earring channel set with a line of baguette-cut diamonds, on post and hinged clip fittings, white precious metal mounted, *length 2.1cm.*

£700 - 900

77

A CULTURED PEARL AND DIAMOND EARRINGS AND PENDANT SUITE

Each with a pear-shaped cultured pearl drop of pale pink hue, surmounted by fluted cap and single brilliant-cut diamond, the earrings with post and butterfly fittings, white precious metal mounted, *earrings length 2.4cm, pendant length 3.5cm. (2)*

£1,000 - 1,500

78

A DIAMOND AND SAPPHIRE BRACELET

The line of brilliant-cut diamonds in graduated millegrained settings, each bordered by semi-circular sapphires, to a baton-link bracelet, white precious metal mounted, (one sapphire deficient, all untested for natural versus synthetic origin), *length approximately 14.5cm.*

£500 - 700

79

A DIAMOND SPRAY BROOCH

Of stylised openwork scroll design, set with channels of graduated brilliant and single-cut diamonds, white precious metal mounted, *length 3.4cm.*

£500 - 700



65



66



67



68



69



No lot



71



76



77



72



73



78



79



74



75



80

80

AN 18CT WHITE GOLD AND SYNTHETIC SAPPHIRE SUITE

Comprising a bracelet, dress ring and pair of ear pendants, the bracelet with central pear-shaped synthetic sapphire, claw mounted within a foliate surround of brilliant-cut diamonds, together with a marching dress ring, and ear pendants on hinge and post fittings, stamped '750', bracelet length 18.5cm, ring size L½, ear pendant length 5cm. (3)

£800 - 1,000

81

A DIAMOND LINE BRACELET AND A DIAMOND SET BANGLE

The bracelet collet set with a line of brilliant-cut diamonds, with bar spacers between, two colour precious metal mounted, the bangle with loop terminal and brilliant-cut diamond set fitting, 18ct gold mounted, first bracelet length 17cm. (2)

£800 - 1,000

82

A DIAMOND SET HEART PENDANT AND A DIAMOND BRACELET

The pendant inset with brilliant-cut diamonds, within polished heart design, to suspensory loop, white precious metal mounted, stamped '14k', the bracelet composed of heart motifs, each centred with a single-cut diamond, 9ct white gold mounted, pendant length 2.5cm, bracelet length 17cm. (2)

£700 - 900

83

A DIAMOND LINE BRACELET

The line of brilliant-cut diamonds in part-collet settings, to clasp stamped '18kt' and '3.00', yellow precious metal mounted, length 18.5cm.

£600 - 800

84

A DIAMOND SET BRACELET

The articulated bracelet with alternate links of brilliant and tapered baguette-cut diamonds, to clasp stamped '9k 3.0', white precious metal mounted, length 18cm.

£800 - 1,200

85

A FANCY-LINK BRACELET

The articulated bracelet composed of reeded chevron-shaped links, of alternate white and yellow precious metal, stamped '750', length 19cm.

£500 - 700

86

A DIAMOND SET PANEL BRACELET

Comprising a line of repeating panels of geometric openwork design, set throughout with single-cut diamonds, white precious metal mounted, length 17.5cm.

£1,000 - 1,200

87

A SAPPHIRE AND DIAMOND BRACELET

The central pierced octagonal panel millegrain set with square-cut sapphires and circular-cut diamonds, between tapered panel shoulders of further diamonds, to an articulated baton-link bracelet, stamped '585', (sapphires untested for natural versus synthetic origin), length 18.5cm.

£500 - 700

88

A DIAMOND SET BRACELET

Composed of twin articulated rows of brilliant-cut diamonds with floral spacers, white precious metal mounted, clasp stamped '18k 750', length 17cm.

£600 - 800

89

A DIAMOND LINE BRACELET

Composed of claw set brilliant-cut diamonds with polished wave-shaped links between, the yellow precious metal mount stamped '14k', length 18cm.

£800 - 1,000

90

A PAIR OF DIAMOND SET LORGNETTES

The tapered handle with ribbon bow surmount and pierced geometric decoration, millegrain set throughout with brilliant and single-cut diamonds, to engraved hinged lense surround, white precious metal mounted, length 8.6cm.

£600 - 800



81



82 (part)



82 (part)



83

84



85



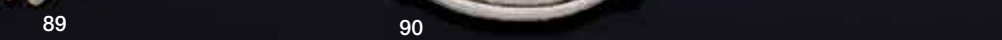
86



87



88



89



90



91

91
AN EARLY 19TH CENTURY AMETHYST AND PEARL CROSS-SHAPED BROOCH/PENDANT

Set with five oval mixed-cut amethysts in closed back setting, with half pearl highlights, gold mounted, *length 5.5cm.*

£700 - 900

Accompanied by a hand written note stating that the brooch was given to the recipient's grandmother circa 1819, by Lord Yarborough, whose grandsons (Pelhams) were pupils of her father Mr Jenkins, of Thorpe Hall.

The recipient was Sarah O'Born, wife of Major Edward Jenkins, of Thorpe Hall, Peterborough, tutor to Lord Yarborough's grandsons.

Lord Yarborough, Charles Anderson-Pelham, 1st Baron Yarborough (1749-1823) was a British politician, elected to the House of Commons for Beverley in 1768. In 1794 he was raised to the peerage as Baron Yarborough in the County of England.

92
AN AMETHYST AND DIAMOND COLLAR NECKLACE

Composed of graduated circular mixed-cut amethysts in millegrain collet settings, adapted with old and rose-cut diamond set ribbon bow links between, to later clasp, *length 34.5cm.*

£800 - 1,200

93
AN ART DECO DIAMOND AND SAPPHIRE SET RIBBON BOW BROOCH

Set with brilliant and square-cut diamonds, combined with calibr -cut sapphire highlights, white precious metal mounted, *length 4.5cm.*

£800 - 1,000

94
CHROUSSIS: AN 18CT GOLD MOUNTED OVAL AMETHYST PENDANT

The oval mixed-cut amethyst with feature 'tiger stripe' inclusion, in four claw setting, to rigid suspensory loop, *length 5.2cm, amethyst dimensions approximately 4cm x 3cm.*

£800 - 1,000



92



93



94



95

95
A PAIR OF DIAMOND FOLIATE EAR PENDANTS

Each pear-shaped old-cut diamond drop in pinched collet setting, below a foliate surmount of graduated cushion and rose-cut diamonds, on wire fittings, *length 2.9cm.*

£1,500 - 2,000

96
A DIAMOND FLOWER NECKLACE CENTREPIECE

Comprising a spray of flowerheads, each centred with a brilliant-cut diamond, to petals and leaves set with rose-cut diamonds, the reverse with two clasp fittings, one to each side, *length 5cm.*

£800 - 1,000

97
A 19TH CENTURY DIAMOND FLORAL SPRAY BROOCH

The spray of flowerheads and foliage to tied ribbon stem, set throughout with old-cut and cushion-shaped diamonds of white and yellow-brown tints, the later brooch fitting with Portuguese marks, (diamonds untested for natural colour), *length 5cm.*

£600 - 900



96

98
A DIAMOND STAR BROOCH/PENDANT

Set throughout with old-cut diamonds, with detachable brooch fitting, *length 3.2cm.*

£600 - 800

99
A PAIR OF ROSE-CUT DIAMOND EARRINGS

Each flowerhead cluster set with graduated rose-cut diamonds in foiled closed-back settings, on later post and butterfly fittings, *diameter 1.6cm.*

£600 - 800

100
AN AMETHYST AND DIAMOND CLUSTER RING

The circular mixed-cut amethyst claw set within a brilliant-cut diamond border, with marquise-cut diamond set shoulders, two colour precious metal mounted, *ring size N.*

£600 - 800



97



98



99



100

101

A MULTI-STRAND FRESHWATER PEARL NECKLACE WITH DIAMOND SET CLASP

Comprising eight strands of baroque freshwater pearls of pink and white tints, to a textured yellow precious metal panther's head clasp, highlighted by brilliant-cut diamonds, with Austrian marks, *length 42cm*.

£600 - 800

102

A FANCY COLOURED SYNTHETIC SAPPHIRE PENDANT AND RING

The pendant with a cushion-shaped synthetic sapphire of pinkish-orange hue, in claw setting, surmounted by a seed pearl set foliate panel, suspended from a fine trace-link chain, together with a matched single stone ring, the oval-cut stone of similar hue, claw set to a yellow precious metal mount, stamped '750', *pendant mounted stone weight 6.35ct, ring mounted stone weight 5.81ct, pendant length 2.7cm*. (2)

£500 - 700

Accompanied by reports issued by Holts, London, dated 8 September 2014, report no. 08091401 and 08091402.

103

A GEM SET PANEL PENDANT/BROOCH

The oval panel with a collet set cluster of oval mixed-cut orange pastes, spaced by small lasque-cut diamond points, to a floral and foliate engraved border, the pin with Portuguese marks, *length 4.5cm*.

£200 - 300

104

A PAIR OF CITRINE AND DIAMOND EAR PENDANTS

Each rectangular scissor-cut citrine within a scrolled setting of circular-cut diamonds, below a diamond set chain-link surmount, on post and butterfly fittings, the white precious metal mounts stamped '14k', *length 4.3cm*.

£500 - 600

105

AN EARLY 20TH CENTURY DIAMOND BAR BROOCH

The pierced scrolling bar millegrain set with old and brilliant-cut diamonds, to central cluster of similarly cut diamonds, *principal diamond weight approximately 0.55ct, length 5.3cm*.

£1,000 - 1,200

106

A PAIR OF CULTURED PEARL AND DIAMOND EARCLIPS

Each cluster panel centred with a cultured pearl, to a border of brilliant-cut diamonds, on hinged clip fittings, white precious metal mounted, *diameter 1.2cm*.

£500 - 700

107

A CITRINE, GARNET AND BAROQUE PEARL BROOCH

The oval panel with central rectangular step-cut citrine, to a baroque pearl and oval-cut garnet set border, framed by engraved foliate scrolls, to later pin fitting, *width 3.9cm*.

£500 - 700

108

A BYZANTINE-LINK NECKLACE AND BRACELET SUITE

Composed of alternate textured and polished links, yellow precious metal mounted, stamped '750', *necklace length 44.5cm, bracelet length 19.5cm*. (2)

£900 - 1,000

109

A PAIR OF CULTURED PEARL AND DIAMOND EAR PENDANTS

Each cultured pearl drop of approximately 10.5mm diameter, below a brilliant-cut diamond set cap, the surmount with further brilliants and marquise-cut diamonds, on post and screw-back fittings, with French platinum import marks, *length 3.15cm*.

£800 - 1,200

110

A YELLOW SAPPHIRE SET RING

The oval mixed-cut yellow sapphire, claw set within a rectangular-shaped frame, yellow precious metal mounted, *ring size J*.

£300 - 400

111

MIKIMOTO: TWO CULTURED PEARL AND DIAMOND BROOCHES AND A BRACELET

Comprising a ribbon bow brooch, set with graduated cultured pearls and brilliant-cut diamonds, to signed 18ct gold mount, a similarly set double hearts brooch, to a signed 18ct gold mount and a bracelet, composed of three strands of uniform cultured pearls, spaced by brilliant-cut diamond set bars, to a diamond set panel clasp, stamped '750' and signed 'Jka', *first brooch length 3.7cm*. (3)

£500 - 700

112

A YELLOW PRECIOUS METAL CHAIN NECKLACE

Composed of continuous anchor-links, stamped '750', *length 80cm*.

£500 - 700



101



102 (part)



103



102 (part)



105



104



106



107



109



110



111



108



112



113

CARTIER: A DIAMOND SET 'LOVE' PENDANT AND MATCHED BAND RING

The circular openwork pendant with alternate brilliant-cut diamonds and engraved screwhead motifs, signed and stamped '750', numbered OS4297, suspended from a fine paper-link chain, with maker's case, pouch and box, together with a matched 18ct white gold 'Love' ring, the flat-section band with similar screwhead motifs, signed and numbered GS1695, both accompanied by maker's purchase certificates dated 04.10.08, *pendant length 2.4cm, ring size P (leading edge)*. (2)

£600 - 800

114

TWO PAIRS OF DIAMOND SET EARHOOPS AND A DIAMOND HEART PENDANT ON CHAIN

The first pair of rigid hoop design, inset to the front with a channel of baguette-cut diamonds, on post fittings, the second pair of smaller size, the hinged hoops similarly channel set with baguette-cut diamonds, with post fittings, both pairs white precious metal mounted, stamped '14k', and a heart-shaped pendant with outline of baguette-cut diamonds, yellow precious metal mounted, on box-link chain, clasp stamped '750', *first pair diameter 3.2cm*. (4)

£500 - 700

115

CHARLES DE TEMPLE: AN 18CT GOLD BAND RING

The two colour gold band of continuous abstract reeded form, signed and hallmarked for London 1971, *ring size M½*.

£500 - 600

116

GUCCI: A SWIVEL BAND RING TOGETHER WITH A DRESS RING

The first designed as a white precious metal flat section swivel band, with pierced geometric decoration and 'Gucci' signature, stamped '750' to interior, the second of wide ropetwist form, applied with cross motif, yellow precious metal mounted, unsigned, *first ring size approximately O½*. (2)

£500 - 700

117

A DIAMOND DRESS RING

The circular tiered panel of textured abstract design, centred with a brilliant-cut diamond in claw setting, yellow precious metal mounted, *diamond weight approximately 0.60ct, ring size K½*.

£700 - 900

118

A PAIR OF RUBY AND DIAMOND SET EARCLIPS

Each designed as a foliate spray, highlighted by circular-cut rubies and brilliant-cut diamonds, to hinged clip fittings, the 18ct gold mounts hallmarked for London 1956, signed 'HGM' for H G Mautner, *length 2.5cm*.

£300 - 500

119

J LACLOCHE: A PAIR OF SAPPHIRE SET EARCLIPS

Of leaf design, each centred with sapphires, to hinged clip fittings stamped 'J Lacloche, Paris, Cannes', with lozenge-shaped maker's mark and stamped eagle's head mark, *length 22cm*.

£600 - 800

120

CARTIER: TWO 18CT GOLD BAND RINGS

Comprising bands of polished white and yellow gold, of wavy design, to be worn individually or ensuite, signed and numbered B69818, with 18ct gold convention marks, *ring sizes M and M½*. (2)

£500 - 700

121

CHAUMET: A DIAMOND SINGLE STONE RING

The round brilliant-cut diamond in oval collet setting, to a white precious metal court-section shank, with indistinct signature and lozenge-shaped mark to upper shank, with Chaumet case and purchase certificate dated 1995, *ring size J*.

£600 - 800

122

CARTIER: AN 18CT GOLD 'LOVE' RING

The flat section band engraved with repeating screwhead motifs, signed and numbered 985007 52, with 18ct gold convention mark, *ring size L (leading edge)*.

£300 - 500

123

A DIAMOND SET DRESS RING

The graduated gas-pipe link hoop of crossover design, terminating with a pear-shaped diamond, two colour precious metal mounted, scratch inscribed 'kt 0,53', *ring size approximately I*.

£500 - 700

124

A DIAMOND SET BRACELET

Composed of articulated shaped baton links, alternately set with rectangular clusters of brilliant-cut diamonds, white precious metal mounted, stamped '750', *width 1.1cm*.

£1,000 - 1,500

125

FABERGE: AN ENAMEL AND DIAMOND SET EGG PENDANT BY VICTOR MAYER

The hinged blue enamel egg pendant applied with a brilliant-cut diamond set heart motif, containing a red enamel heart drop from fine chain-link suspension, signed and numbered 161/200, with maker's mark for Victor Mayer, to trace-link chain with signed enamel panel, numbered 268/100, stamped 'GVW', both with 18ct gold import marks, in maker's case, *pendant length 2.9cm, chain length 44cm*.

£600 - 800



113 (part)



114



115



116



118



123



117



122



119



121



113 (part)



120



124



125

126

TIFFANY & CO: TWO NECKLACES AND A PAIR OF EARRINGS, WITH FURTHER ITEMS

Comprising a silver coffee bean pendant on trace-link chain, designed by Elsa Peretti for Tiffany & Co, signed and hallmarked, cased, a pair of two colour precious metal X-shaped earrings, by Tiffany & Co, with post and hinged clip fittings, signed and stamped '750 925', cased, a two colour precious metal ropetwist-link necklace, by Tiffany & Co, signed and stamped '750 925', an 18ct gold fancy-link bracelet, signed 'JG&S', in unassociated Cartier case, an 18ct gold and cultured pearl fancy-link collar necklace, an oval three colour pendant, and two further bracelets, *first pendant width 2cm*. (8)

£400 - 600

127

TIFFANY & CO: A FANCY-LINK NECKLACE

The flattened fancy-link necklace with beaded accents, to signed clasp stamped '925', in maker's case and outer box, *length 41cm*.

£150 - 200

128

BULGARI: A PAIR OF EARRINGS

Each suspending a signed disc-shaped drop with hardstone panel of greenish-grey hue, surmounted by a smaller similar disc with hardstone panel of orange hue, on post and hinged clip fittings, 18ct gold mounted, in signed pouch, *length 2.45cm*.

£500 - 700

129

A PAIR OF SAPPHIRE AND DIAMOND EARRINGS

Each openwork heart-shaped drop pavé set with brilliant-cut diamonds, below an oval cabochon sapphire surmount with reeded borders, on post and butterfly fittings, 18ct gold mounted, *length 2.2cm*.

£300 - 400

130

BULGARI: A DIAMOND AND ONYX SET SWIVEL RING

The rotating signed disc-shaped panel inset with onyx to one side and a cluster of brilliant-cut diamonds to the other, white precious metal mounted, signed and stamped '750', *ring size K½*.

£500 - 700

131

TIFFANY & CO: AN 18CT GOLD PENDANT, DESIGNED BY PALOMA PICASSO, AND TWO BAND RINGS

The circular panel pendant of stylised openwork snowflake design, signed and hallmarked, suspended from a black cord necklace, together with a concave yellow precious metal band ring, by the same maker, the exterior with engraved signature, stamped '750', a similar white metal example, stamped '925', with two signed pouches, *pendant diameter 4cm, both rings size M (leading edge)*. (3)

£600 - 800

132

CARTIER: A PAIR OF DIAMOND SET 'TRINITY' EAR HOOPS

Each pierced three colour hoop with central band of brilliant-cut diamonds, on post and butterfly fittings, signed and stamped '750', numbered 150855, *length 2cm*.

£500 - 700

133^Ω

TIFFANY & CO: A 'LUCIDA' SAPPHIRE AND DIAMOND FULL HOOP ETERNITY RING

Alternately channel set with square octagonal-cut sapphires and diamonds, signed and stamped '750 PT950', numbered 5970744, in maker's pouch, *ring size L*.

£500 - 700

134

A DIAMOND SET BAR BROOCH

The convex bar with brilliant-cut diamond set arrowhead terminals, applied to the centred with a similarly set 'X' motif, 18ct two colour gold mounted, in Garrard case, *length 6.2cm*.

£500 - 600

135

A CHARM BRACELET

The baton and roundel-link bracelet suspending assorted charms, to include a rose-cut diamond set bird, an aeroplane and various enamelled charms, with stamped marks to the clasp, including the French eagle's head and boar's head marks, *length 17cm*.

£600 - 800



126 (part)



127



128



129



130



126 (part)



131 (part)



126 (part)



132



133



131 (part)



134



135



136

TWO FANCY-LINK BRACELETS AND A LONG CHAIN

Comprising a 9ct gold Byzantine-link bracelet, an 18ct gold bead-link bracelet, and a belcher-link long chain, with swivel clasp, *first bracelet length 19cm.* (3)

£600 - 800

137

BOODLES: A DIAMOND SET PENDANT AND EARRINGS SUITE AND A DIAMOND CLUSTER RING

The pendant and earrings of stylised flowerhead design, each centred with a brilliant-cut diamond, the pendant suspended from a wire collar, the earrings on post fittings, both signed, numbered and hallmarked for 18ct gold, together with a diamond flowerhead cluster ring, set with graduated brilliant-cut diamonds, also 18ct gold mounted, *pendant and earrings length 1.3cm.* (3)

£600 - 800

138

A DIAMOND SINGLE STONE PENDANT

The round brilliant-cut diamond in millegrained collet setting, below a bifurcated bale, yellow precious metal mounted, *diamond weight approximately 0.75ct, length 1.2cm.*

£800 - 1,200

139

A PAIR OF PRINCESS-CUT DIAMOND EARSTUDS

Each princess-cut diamond in claw setting, on post and butterfly fittings, yellow precious metal mounted, *total diamond weight approximately 0.80ct.*

£700 - 900

140

A DIAMOND SINGLE STONE RING, A PAIR OF DIAMOND EARSTUDS AND A WEDDING BAND

The first ring with a round brilliant-cut diamond in four claw setting, to tapered platinum mount, the earstuds with princess-cut diamonds in four claw settings, to post and butterfly fittings, stamped '750', the platinum wedding band of court section profile with flat edges, signed 'Pravins', *first ring diamond weight approximately 0.50ct, size L.* (3)

£600 - 800

141

A DIAMOND SINGLE STONE RING

The round brilliant-cut diamond in four claw setting, to a platinum crossover shank, *diamond weight approximately 0.30ct, ring size J½.*

£300 - 500

Accompanied by a report issued from Independent Diamond & G.R. Laboratory, dated 2 December 2010, numbered 828-87854, stating that the diamond has VS1 clarity and F colour.

142

A DIAMOND SET SERPENT RING

The scrolled entwined serpent with part-engraved decoration, to an old-cut diamond set head with circular-cut ruby eyes, 14ct gold mounted, *ring size O.*

£500 - 700

143

A DIAMOND SINGLE STONE RING

The round brilliant-cut diamond in four claw setting, between tapered shoulders of further brilliants, yellow precious metal mounted, stamped '750', *principal diamond weight approximately 0.40ct, ring size M½.*

£500 - 700

144

A DIAMOND THREE STONE RING

The principal emerald-cut diamond claw set between two brilliant-cut diamonds, 18ct gold mounted, *total diamond weight approximately 0.70ct, ring size K.*

£1,200 - 1,500

145

A DIAMOND AND SAPPHIRE RING AND AN OPAL AND DIAMOND RING

The first with a round brilliant-cut diamond in collet setting, between tapered crossover shoulders set with graduated circular-cut sapphires and further brilliants, 18ct gold mounted, the second with an oval cabochon opal, to an asymmetric wirework setting with brilliant-cut diamond highlights, platinum mounted, *ring sizes K and N respectively.* (2)

£600 - 800

146

TWO YELLOW PRECIOUS METAL CHAIN-LINK NECKLACES

Comprising a figaro-link chain necklace, stamped '958' and signed 'PNG', and a 9ct gold curb-link chain necklace, *lengths 58cm and 46cm respectively.* (2)

£600 - 800

147

A PAIR OF DIAMOND EARSTUDS

Each round brilliant-cut diamond in four claw setting, to post and butterfly fittings, white precious metal mounted, stamped '750', *total diamond weight approximately 0.75ct.*

£600 - 800



136

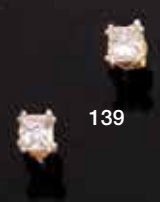


137 (part)

138

137 (part)

137 (part)



139



140 (part)



141



140 (part)



142



143



144



145



146



147

148

A CULTURED PEARL NECKLACE

The single strand of cultured pearls measuring approximately 8mm to 9mm in diameter, with marquise-shaped rose-cut diamond set clasp, *length 72cm.*

£800 - 1,000

149^Ω

A TANZANITE FACETED BEAD NECKLACE

The single strand of graduated faceted tanzanite beads with chain-link connections, *length 54.5cm.*

£300 - 500

150

A SAPPHIRE AND DIAMOND CLUSTER PENDANT ON CHAIN

The oval mixed-cut sapphire claw set within a border of brilliant-cut diamonds, to an 18ct gold mount signed 'C&F' for Cropp & Farr, suspended from an 18ct gold fine trace-link chain, *pendant length 1.65cm.*

£600 - 800

151

A SAPPHIRE AND DIAMOND CLUSTER PENDANT NECKLACE

The oval mixed-cut sapphire and brilliant-cut diamond cluster drop surmounted by a wishbone of further brilliants, to a fancy-link back chain, two colour precious metal mounted, cased, *chain length 40cm.*

£500 - 700

152

A SAPPHIRE AND DIAMOND THREE STONE RING

The oval mixed-cut sapphire claw set between brilliant-cut diamonds, to a white precious metal mount stamped 'plat', *total diamond weight approximately 0.70ct, ring size I½.*

£600 - 800

153

A SAPPHIRE AND DIAMOND CLUSTER RING

The oval mixed-cut sapphire claw set within a double row border of brilliant-cut diamonds, to white precious metal mount stamped 'k18', *ring size N.*

£600 - 800

154

AN EARLY 19TH CENTURY SAPPHIRE AND DIAMOND CLUSTER RING

The closed-back cluster with central sapphire and border of cushion-cut diamonds, in pinched collet mount, setting probably foiled, to later mounted shank, *ring size M.*

£1,200 - 1,500

155

A SAPPHIRE AND DIAMOND CLUSTER RING

The tiered target cluster alternately set with brilliant-cut diamonds and circular-cut sapphires, two colour precious metal mounted, *principal diamond weight approximately 0.55ct, ring size L.*

£500 - 600

156

A SEED PEARL TASSEL PENDANT NECKLACE

The pendant with crown-shaped surmount, set with blue and white stone detail, beneath a white stone cluster, and seed pearl tassel below, together with a pair of lapis lazuli bead ear pendants, *necklace length 78cm (excluding tassel). (2)*

£500 - 600

157

A DIAMOND OCTAGONAL RING

The central brilliant-cut diamond between baguette-cut diamond shoulders, and outer border of smaller brilliants, white precious metal mounted, stamped '18ct', *total diamond weight approximately 0.75ct, ring size P.*

£800 - 1,000

158

A SAPPHIRE AND DIAMOND CLUSTER RING

The oval mixed-cut sapphire claw set within a border of brilliant-cut diamonds, shank numbered 685308, *ring size K½.*

£500 - 600

159

A SAPPHIRE AND DIAMOND CLUSTER RING

The rectangular step-cut sapphire claw set within a border of alternate baguette and brilliant-cut diamonds, to foliate engraved shoulders, white precious metal mounted, *ring size K.*

£600 - 800

160

A SAPPHIRE AND DIAMOND CLUSTER RING

The oval mixed-cut sapphire claw set within a double row border of brilliant-cut diamonds, to a white precious metal mount with later sizing beads, *ring size approximately K½.*

£700 - 900

161

A PAIR OF DIAMOND SET EARRINGS AND A PAIR OF LAPIS LAZULI EARRINGS

The first of textured half hoop design, highlighted by a trio of collet set brilliant-cut diamonds, on post and hinged clip fittings, yellow precious metal mounted, the second of oval panel design with central lapis lazuli cabochons, also on post and hinged clip fittings, stamped '9ct', *lengths 1.55cm and 2cm. (2)*

£400 - 500



152

153

150

151

154

155

148

149

156

161

157

158

159

160



164



162

163

162

A THREE COLOUR GOLD AND DIAMOND SET PENDANT

The frosted openwork quatrafoil panel with pierced foliate motifs, millegrain set with five old-cut diamonds, 14ct gold mounted, *length 3.4cm.*

£300 - 400

163

A LATE VICTORIAN SEED PEARL NECKLACE

The five graduated flowerheads with figure-of-eight links between, set throughout with half pearls, to chevron-link back chain, *length 39cm.*

£700 - 900

164

A 19TH CENTURY SEED PEARL NECKLACE

The three seed pearl set flowerheads of filigree lattice work panels, spaced by similarly set panels and suspending a foliate drop below, to single strand seed pearl back chain and later clasp, (pearls untested for origin), *length 40cm.*

£700 - 900

165

THREE BROOCHES AND A PASTE PART CHATELAINE

The first brooch of pierced flowerhead design, set with old and rose-cut diamonds, the second of circular pierced work design, incorporating seed pearl star motif, on pendant bale, a further gem set brooch/pendant and a white paste set brooch with chatelaine suspensions, *first brooch length 2.8cm.* (4)

£300 - 500

166

A LATE VICTORIAN 15CT GOLD DEMANTOID GARNET AND SEED PEARL PENDANT NECKLACE

The openwork pendant set with demantoid garnets and seed pearls, suspending three similarly set asymmetric drops below, on fine trace-link back chain, the reverse and clasp stamped '15c', in fitted case, (pearls untested for origin), *pendant length 5.5cm.*

£500 - 700



166



165 (part)

167

A LATE VICTORIAN GOLD MOUNTED MOONSTONE FRINGE NECKLACE

Claw set throughout with cabochon moonstones, with swag festoons between and three knife-edge pendant drops below, stamped '9ct', to slim barrel clasp, *length 41cm.*

£700 - 1,000

168

A DIAMOND AND MOONSTONE HINGED BANGLE

The upper section centred with a moonstone and diamond cluster, to knife-edge setting between diamond set highlights, with case, *inner diameter 5.5cm.*

£400 - 600

169

A LATE VICTORIAN GOLD MOUNTED SAPPHIRE AND DIAMOND BANGLE

The upper section claw set with graduating mixed-cut sapphires and spaced by pairs of old-cut diamonds, *inner diameter 5.5cm.*

£800 - 1,200



170

A MOONSTONE NECKLACE

Spectacle set with oval cabochon moonstones, spaced by chain links, the clasp stamped '9ct', *length 39cm.*

£600 - 800

171

AN 18CT GOLD MOUNTED MOONSTONE FRINGE NECKLACE BY CHROUSSIS

Composed throughout of slightly graduating oval cabochon moonstones, in open collet mounts, with central pendant drop, clasp stamped '750', makers mark 'YC' and marked 'Chroussis' to panel, *length 46.5cm.*

£800 - 1,000





184

172

A VARI GEM-SET BIB NECKLACE AND MATCHED EAR PENDANTS

The necklace spectacle set throughout with vari-coloured gemstones, to include aquamarine, garnet, citrine, peridot and amethyst, spaced by fine chain connections, to figure-of-eight shaped clasp, yellow precious metal mounted, stamped '585', together with a pair of vari gem-set ear pendants, each with hoop surmount and graduating fringe below, on loop fittings, stamped '585', necklace length 40.5cm, earpendants length 5.8cm. (2)

£500 - 700

173

A PAIR OF RUBY AND DIAMOND CLUSTER EARSTUDS

Each circular mixed-cut ruby claw set within a border of brilliant-cut diamonds, to 18ct gold post and butterfly fittings, signed 'C&F' for Cropp & Farr, diameter 1.2cm.

£700 - 900

174

TIFFANY & CO: A PAIR OF SAPPHIRE FLOWERHEAD EARSTUDS, AND AN AQUAMARINE AND DIAMOND RING

Each earstud with a flowerhead cluster of pear-shaped pink sapphires and central circular-cut blue sapphire, to signed platinum mounts with post fittings, in maker's case, the ring with a square mixed-cut aquamarine in abstract claw setting, highlighted to the corners with brilliant-cut diamonds, between bifurcated shoulders, the white precious metal mount stamped '18k', with later sizing beads, maker's mark 'FKL', earstuds diameter 1.1cm. (2)

£600 - 800

175

A VARI-COLOURED SAPPHIRE NECKLACE

The crossover wishbone-shaped necklace with channels of vari-coloured square-cut sapphires, in graduated shades of pink, orange, yellow, green and blue, to collar with belcher-link extension chain, 18ct gold mounted, (sapphires untested for treatments), inner diameter approximately 13cm.

£600 - 800

176

A VARI GEM-SET LOVE BIRDS BROOCH

The two birds seated on a branch, their bodies pavé set with brilliant-cut diamonds, their wings set with rubies, yellow and blue sapphires and emeralds, with cabochon ruby eyes, yellow precious metal mounted, the reverse stamped '2', (all gemstones untested for treatments), length 4cm, width approximately 4.5cm.

£500 - 700

177

FABERGÉ: A RED ENAMEL AND DIAMOND LADYBIRD EGG PENDANT, BY VICTOR MAYER

The egg-shaped pendant decorated as a ladybird, with black spotted red enamel wings and brilliant-cut diamond set detail between, signed FABERGE and numbered 144/1000, with maker's mark for Victor Mayer, initials 'GVW' and import marks for 18ct gold, on unassociated ropetwist chain, stamped '750', pendant length 2.7cm.

£500 - 700

178

FABERGÉ: A PAIR OF MODERN DIAMOND AND ENAMEL EARPENDANTS

The heart-shaped drops decorated with red guilloche enamel, suspended on similarly decorated tapered baton with collet set diamond highlights to either end, signed 'Fabergé', stamped '750' and numbered 34/1000, length 2.7cm.

£500 - 700

179

BULGARI: A TOPAZ SINGLE STONE RING

The circular cabochon blue topaz collet set within engraved tapered shoulders, to signed yellow precious metal mount stamped '750', ring size K½.

£500 - 700

180

A RUBY AND DIAMOND CLUSTER RING

The oval mixed-cut ruby claw set within a brilliant-cut diamond border, 18ct white gold mounted, the shank with later sizing beads, total diamond weight approximately 1.10ct.

£600 - 800

181

TIFFANY & CO: A PAIR OF CULTURED PEARL AND DIAMOND EARSTUDS

The cultured pearls of approximately 7mm diameter, each surmounted by a brilliant-cut diamond, on post and butterfly fittings, 18ct gold mounted and signed 'T&Co', cased, length 1.05cm.

£500 - 700

182

A VARI GEM-SET BRACELET

Of foliate design, set throughout with vari-coloured gemstones, to include diamonds, peridot, amethyst and citrine, yellow precious metal mounted, clasp stamped '750', length 17.5cm.

£300 - 400

183

BULGARI: A DIAMOND FULL HOOP ETERNITY RING

The shaped band inset with a channel of brilliant-cut diamonds, with feature signatures to sides, stamped '750' and numbered 54, with maker's pouch, ring size N (leading edge).

£500 - 700

184

A DIAMOND CLUSTER PENDANT

The navette-shaped pendant designed as a cluster of claw set marquise and brilliant-cut diamonds, on a fine box-link chain, pendant length 4.1cm.

£1,000 - 1,500



172



173



175



174 (part)



177



174 (part)



178



176



181



179



180



183



182

185

A 19TH CENTURY ITALIAN MICROMOSAIC BROOCH

The oval micromosaic panel depicting St Peter's Basilica in Rome, to a black hardstone ground, within a ropetwist wirework decorated frame, the pin with indistinct crossed keys mark for Rome, in fitted case, *width 4.8cm.*

£700 - 900

186

A 19TH CENTURY FRENCH PEARL, DIAMOND AND ENAMEL LOCKET PENDANT ON CHAIN

The circular locket pierced decorated to both sides with flowerheads and foliate scrolls to glazed interior, the cover with a rose-cut diamond cluster and half pearl highlights, to a scrolled white and red enamel ground, the sides with ropetwist wirework and engraved geometric borders, below an enamel and pearl set bale with French eagle's head mark, suspended from a fine ropetwist-link long chain, unmarked, (all pearls untested for origin), *pendant length 3.4cm.*

£500 - 800

187^Y

A VICTORIAN CORAL AND ENAMEL PENDANT ON LATER CHAIN

The shaped circular pendant with central coral cabochon, to ropetwist wirework and bead borders heightened with white enamel decoration, set with smaller coral cabochons to the cardinal points, below a similarly set lozenge-shaped bale, glazed verso, suspended from a later curb-link chain, with unassociated C. Giuliano case, *pendant length 4.2cm.*

£500 - 700

188

A MICROMOSAIC BROOCH/PENDANT

The pierced cartouche with central circular panel of a beetle, framed by vari-coloured foliage and flowerheads, surmounted by two doves and scrolled wirework borders, suspending three similar drops below, the gilt mount with glazed verso, (brooch pin deficient), *length 7.3cm.*

£400 - 500

189

A LATE 19TH CENTURY MICROMOSAIC PENDANT

The star-shaped panel with central cluster of vari-coloured flowerheads and foliage, to borders of red, blue and white foliage, the reverse with glazed locket verso, below a fluted bale, *length 5.8cm.*

£200 - 300

190

TWO VICTORIAN GOLD LOCKETS

Each of oval hinged form with bloomed finish, the first applied with a laurel wreath, stamped '18', the second applied with a bark engraved monogram and enclosing hairwork panel, *lengths 5.5cm and 6cm respectively.* (2)

£700 - 900

191

A VICTORIAN GOLD AND GARNET SET BROOCH

The scrolled openwork panel with bloomed finish, engraved with foliage and lattice work, set with three oval cabochon garnets in foiled closed-back settings, glazed verso, suspending two graduated tassel drops below, *width 5.8cm.*

£700 - 900

192

A VICTORIAN HARDSTONE CAMEO BROOCH/PENDANT

The oval hardstone cameo depicting Demeter, the Greek goddess of the harvest, with wheat sheaves in her hair, to ropetwist wirework decorated frame with white enamel dentine border, glazed verso, *length 5.3cm.*

£700 - 900

193

A LATE 19TH CENTURY HARDSTONE CAMEO BROOCH/PENDANT

The oval hardstone cameo carved to depict a female portrait profile with veiled headdress, to profusely decorated frame with ropetwist wirework borders, *length 4.5cm.*

£700 - 900

194

A VICTORIAN ENAMEL, DIAMOND AND HALF PEARL SET BANGLE

The hinged bangle of bloomed finish, applied to the front with a blue enamel, cushion-shaped diamond and half pearl set X motif, framed by graduated beads and engraved foliate borders, *inner diameter 5.6cm.*

£500 - 700

195

A VICTORIAN GOLD BANGLE

The wide hinged bangle of bloomed finish, applied to the front with a frieze of stylised foliage, scrolls and beadwork, between ropetwist wirework borders, *inner diameter 5.5cm.*

£500 - 700

196

A DIAMOND SET BRACELET

The articulated panel of scrolled openwork design, millegrain set with graduated old and single-cut diamonds, to a two colour precious metal bracelet of openwork heart-shaped links, in fitted case, (bracelet later shortened), *length 15.5cm.*

£500 - 700



185



188



186



187



189



190



191



192



193



194



195



196

197

AN AQUAMARINE AND DIAMOND DRESS RING

The oval cabochon aquamarine applied with a scrolled channel of brilliant-cut diamonds, two colour precious metal mounted, *ring size N½*.

£700 - 900

198

AN AQUAMARINE AND DIAMOND RING

The rectangular step-cut aquamarine with canted corners, claw set between baguette-cut diamond set shoulders, 18ct gold mounted, *ring size O*.

£500 - 600

199

AN AQUAMARINE AND DIAMOND RING

The step-cut rectangular aquamarine in four claw setting, between diamond baguette-cut shoulders, white precious metal mounted, shank unmarked, *ring size I*.

£600 - 800

200

AN AQUAMARINE SINGLE STONE RING

The oval mixed-cut aquamarine in collet setting, within a polished surround, between tapered pierced shoulders, 18ct gold mounted, *ring size R*.

£500 - 600

201

AN AQUAMARINE AND DIAMOND PENDANT

The central oval cluster with a mixed-cut aquamarine, to a double row surround of single-cut diamonds, with diamonds set ribbon bow motifs above and below, suspending similar pear-shaped cluster drop, on a fine belcher-link back chain, *pendant length 4.4cm*.

£1,000 - 1,200

202

AN AQUAMARINE AND DIAMOND PENDANT

The rectangular step-cut aquamarine in four claw setting, surmounted by a trio of single-cut diamonds in square millegrained settings, with similarly cut diamond set bale, *length 3cm*.

£600 - 800

203

AN AQUAMARINE AND DIAMOND NECKLACE AND A PAIR OF DIAMOND EARRINGS ENSUITE

The articulated baton-link necklace spaced by oval mixed-cut aquamarines, in brushed finish collet settings, and brilliant-cut diamonds, stamped '750', together with a pair of matched diamond earrings, of conforming design, on post and butterfly fittings, also stamped '750', *necklace length 43cm. (2)*

£500 - 600

204

A PAIR OF AQUAMARINE AND DIAMOND EARCLIPS AND AN AQUAMARINE BROOCH, BY H STERN

The earclips of pierced scrolled design, each obliquely claw set with two rectangular step-cut aquamarines, to channels of brilliant-cut diamonds, on hinged clip fittings, white precious metal mounted, stamped '585', the brooch of textured scrolled form, obliquely claw set with an oval mixed-cut aquamarine, with H Stern maker's mark, stamped '750', *earclips length 2.1cm, brooch length 4.8cm. (2)*

£600 - 800

205

A DIAMOND STAR BROOCH

The multi-rayed star centred with a flowerhead cluster, within a double surround of tapering rays, set throughout with graduated brilliant-cut diamonds, with detachable brooch fitting, stamped '750', *total diamond weight approximately 3.20ct, brooch diameter 3.2cm*.

£700 - 900

206

A PAIR OF DIAMOND SINGLE STONE EARSTUDS

Each emerald-cut diamond in four claw setting, on post and butterfly fittings, 18ct white gold mounted, *total diamond weight approximately 0.70ct*.

£500 - 700

207

AN AQUAMARINE AND DIAMOND RING

The step-cut aquamarine claw set within a surround of brilliant-cut diamonds, with baguette-cut diamond shoulders, shank stamped '18ct', *total diamond weight approximately 1.60ct, ring size N*.

£1,000 - 1,500

208

A DIAMOND THREE STONE RING

The brilliant-cut diamonds inset to white precious metal hoop, unmarked, *ring size O*.

£300 - 500

209

A DIAMOND RING

Of oval outline, composed of four shaped diamonds in four claw setting, to polished shank, 18ct white gold mounted, *ring size P*.

£200 - 300

210

AN AQUAMARINE AND DIAMOND RING AND A DIAMOND PANEL RING

The first ring centred with a rectangular step-cut aquamarine, to pierced tapered shoulders highlighted with brilliant-cut diamonds, white precious metal mounted, stamped '18ct', the second ring with a hexagonal-shaped panel of brilliant and baguette-cut diamonds, between similarly set shoulders, white precious metal mounted, also stamped '18ct', *ring sizes M and P respectively. (2)*

£700 - 900

211

A DIAMOND SINGLE STONE RING

The round brilliant-cut diamond in six-claw setting, to a white precious metal tapered shank, *ring size H*.

£500 - 600

Accompanied by a report issued by GIA dated 23 June 2004, numbered GIA 13513113, stating that the diamond has D colour, IF clarity, weight 0.30ct, very good polish, very good symmetry and no fluorescence.

212

A PAIR OF DIAMOND LINE BRACELETS

Each with brilliant-cut diamonds throughout, in articulated square settings, white precious metal mounted, unmarked, *lengths 18.8cm. (2)*

£1,800 - 2,200



202



201



197



198



199



200



206



207



208



204



205



203



212



209



210



210



211

213

A VICTORIAN GARNET SET BROOCH AND EARRINGS

The gold brooch applied with garnet set star, to glazed locket verso, together with a pair of Victorian gold ear pendants, of hollow construction with garnet highlights and pendant drop below, on loop fittings, with case, *brooch diameter 3.8cm, ear pendants length 5cm.* (2)

£700 - 900

214

A PAIR OF VICTORIAN GOLD EAR PENDANTS AND FURTHER ITEMS

The ear pendants composed of oval bead drops, each applied with a ropetwist and baton-link fringe, on wire fittings, in fitted case, together with a brooch of openwork foliate scrolling design, centred with an oval mixed-cut amethyst, and a graduated bead necklace and matched ear pendants, *first ear pendants length 4.4cm.* (4)

£600 - 700

215

A 19TH CENTURY BELCHER-LINK LONG CHAIN

The links with star decoration, to barrel-shaped clasp, with turquoise coloured highlights and burr detail, *length 104cm.*

£600 - 800

216

A REVERSE CARVED INTAGLIO BROOCH

The oval panel reverse carved and painted to depict Terpsichore, the Greek muse of dance and poetry, kneeling with a lyre to her lap and wreath in her hand, to cannetille decorated frame, the reverse later inscribed and dated 'Xmas 1905', *length 3.2cm.*

£500 - 700

217

A DIAMOND SET BANGLE

The wide hinged bangle with a pierced panel of foliage and scrolls, pinched collet set with rose and lasque-cut diamonds in foiled closed-back settings, indistinctly marked, *inner diameter 6.1cm.*

£500 - 600

218[≈]

A LATE 19TH CENTURY ENAMEL, RUBY AND SEED PEARL SET BANGLE

The wide hinged bangle engraved with stylised geometric decoration, to central openwork cartouche panel, set with circular-cut rubies and seed pearls, framed by scrolls, black enamel and wrigglework borders, *inner diameter 5.5cm.*

£600 - 800

219

AN ENAMEL AND GEM SET SERPENT BANGLE

Of hinged scrolled serpent design, the head set with half pearls and seed pearls to a blue enamel ground, with scroll engraved decoration and cabochon red stone eyes (untested), the tail engraved with further scrolls and flowerheads, (all pearls untested for origin), *inner diameter 4.9cm.*

£600 - 800

220

A PAIR OF ENAMEL AND GEM SET EAR PENDANTS

Each pear-shaped panel with central gem set drop, below a geometric surmount with foliate and bead accents, heightened throughout with black enamel Greek key and scrolling borders, on post and hinged clip fittings, with Portuguese marks, *length 3.9cm.*

£600 - 800

221

A LATE 19TH/EARLY 20TH CENTURY GOLD VIOLIN BROOCH

Realistically modelled as a violin, with gold strings and bridge, the reverse engraved with clasped hands and inscribed 'Many Happy Returns of the Day, 8th Novr. 1905', stamped '15ct', to base metal pin fitting, *length 5.4cm.*

£200 - 250

222^Y

TWO 19TH CENTURY CORAL NECKLACES

The first composed of eight rows of small 'corallium rubrum' beads, to a cannetille work clasp, centred with raised corallium rubrum hatched panel highlight, the second long necklace of continuous two row design, composed of branch segments, spaced by hatched beads, *first necklace length 60cm.* (2)

£500 - 700

223

A VARI-COLOURED SCARAB BEAD BRACELET

The graduating carved scarabs spaced by chain links, with pendant drop to one terminal, and chain link to the other, *length 18.5cm.*

£600 - 800

224[≈]

A DIAMOND AND ENAMEL GROUSE BROOCH

Realistically modelled as a grouse with raised foot, the engraved body and tail pavé set with graduated old and rose-cut diamonds, (one diamond deficient), the red enamel neck with cabochon ruby eyes, (rubies untested for natural versus synthetic origin), *length 3.8cm.*

£800 - 1,000

See back cover illustration



213



214



215



216



217



218



219



220



221



222



223

225

A PAIR OF ART DECO DIAMOND EARRINGS

Each pierced panel of stylised scroll design, millegrain set with brilliant, single and rose-cut diamonds, to post and hinged clip fittings, white precious metal mounted, *length 2cm.*

£800 - 1,200

226

AN OPAL AND DIAMOND PENDANT

The oval cabochon opal bordered by graduated old-cut diamonds, beneath single stone diamond surmount, on fine trace-link back chain, *pendant length including surmount 3.2cm.*

£500 - 700

227

A PAIR OF CULTURED PEARL AND DIAMOND EAR PENDANTS

Each centrally set with a tear drop-shaped cultured pearl in closed-back setting, within a surround of cushion-shaped and old brilliant-cut diamonds, *total diamond weight approximately 1.05ct, length 3.4cm.*

£500 - 600

228

A BLACK OPAL, OPAL DOUBLET AND DIAMOND SET BAR BROOCH

The central bar millegrain set with rose and old-cut diamonds, between pear-shaped cabochon black opal and opal doublet terminals, white precious metal mounted, to later brooch fitting, *length 7.3cm.*

£500 - 700

229

A PAIR OF DIAMOND EARRINGS

Each pierced foliate panel drop set with old, single and rose-cut diamonds, below a similarly set scrolled surmount, on later post and butterfly fittings, *length 2.2cm.*

£500 - 700

230

A PAIR OF DIAMOND SNOWFLAKE EARCLIPS

Each openwork snowflake cluster of graduated brilliant and single-cut diamonds in claw setting, to hinged clip fittings, the white precious metal mounts stamped '750', with Austrian marks, *diameter 1.5cm.*

£600 - 800

231

A PAIR OF OPAL AND DIAMOND CLUSTER EARRINGS

Each oval cabochon opal claw set within a border of old-cut diamonds, on later added post fittings, *length 1.8cm.*

£600 - 800

232

A BANDED AGATE AND DIAMOND SET PENDANT

The oval pendant with carved shell-shaped banded agate panel, to an old-cut diamond set surround, relief decorated with foliage to an engraved scrolled ground, the reverse inscribed with shell motif, with Portuguese marks, *length 5.7cm.*

£1,000 - 1,500

233

AN OPAL AND DIAMOND CLUSTER RING

The oval cabochon opal claw set within an old-cut diamond border, to shank stamped '18', *ring size M½.*

£600 - 800

234

AN OPAL AND DIAMOND CLUSTER RING

The oval cabochon opal millegrain collet set within a border of old-cut diamonds, to shank stamped '18ct & pt', *ring size N.*

£500 - 700

235

AN EDWARDIAN DIAMOND FIVE STONE RING AND A DIAMOND THREE STONE CROSSOVER RING

The first with graduated brilliant and old-cut diamonds, spaced by rose-cut diamond points, to a scroll pierced gallery, inscribed to shank, the second obliquely set with brilliant-cut diamonds, between crossover shoulders of single-cut diamonds, to a white precious metal mount stamped '18ct', *ring sizes S½ and R½. (2)*

£800 - 1,000

236

AN ONYX AND DIAMOND SET BROOCH

The oval onyx panel applied with a floral and foliate spray of old and rose-cut diamonds, to engraved scrolled border highlighted with further diamond points, the pierced panel reverse with Portuguese marks and later fittings, *length 3.8cm.*

£400 - 600

237

AN ENAMEL AND DIAMOND BROOCH/PENDANT

The oval enamel panel depicting the profile of a young lady in peasant dress, signed 'L.C', to a brilliant, single and rose-cut diamond set border of flowerheads, foliage and scrolls, the reverse with similar engraved decoration, *length 4.8cm.*

£800 - 1,200

238

A DIAMOND SET BROOCH

Of sinuous engraved foliate design, highlighted by old and rose-cut diamonds, yellow precious metal mounted, *length 5cm.*

£500 - 600

239

AN EARLY 20TH CENTURY SAPPHIRE, DIAMOND AND HALF PEARL BAR BROOCH

The shaped panel with angular terminals of step-cut sapphires, set to the centre with alternate old-cut diamonds and half pearls, framed by pierced scrolled borders of rose-cut diamonds, two colour precious metal mounted, (sapphires untested for natural versus synthetic origin, pearls untested for origin), *length 6.8cm.*

£500 - 700

240

AN OPAL BANGLE AND RING SUITE

The hinged bangle with a tapered panel of pierced and textured design, set with graduated oval cabochon opals, stamped '14k', together with a five stone opal ring, of conforming design, *bangle inner diameter 5.5cm, ring size N. (2)*

£500 - 700



225



226



227



229



228



230



232



231



236



237



233



238



234



235



239



240

241

A PAIR OF ART DECO STYLE DIAMOND EARRINGS

The pierced panel drops set throughout with graduated brilliant-cut diamonds, suspended from collet set diamond surmount, stamped '750', *total diamond weight approximately 2ct, length 3.1cm.*

£1,200 - 1,500

242

A DIAMOND PENDANT NECKLACE

The shoulders and central drop composed of collet set brilliant-cut diamonds connected by knife-edge baton links, to fine belcher-link back chain, clasp stamped '750', *total diamond weight approximately 1.65ct.*

£1,200 - 1,400

243

AN EMERALD AND DIAMOND PENDANT

The drop-shaped pendant composed of central collet set emerald within a surround of brilliant-cut diamonds, suspended from diamond set bale, to fine belcher-link chain, *pendant length 2.4cm.*

£1,300 - 1,500

244Ω ≈

A 9CT GOLD JADE AND DIAMOND MOUNTED LADY'S COMPACT

The circular compact with engine-turned decoration to the cover, applied with a carved jade panel, and single-cut diamond detail to stepped setting, enclosing mirrored lid, with maker's mark 'PP Ld', hallmarked for Birmingham 1936, in fitted Asprey's case, (jade untested for treatments and enhancements), *diameter 6.3cm.*

£500 - 700

245

A DIAMOND SET WREATH BROOCH

The circular openwork wreath millegrain set with single-cut diamond foliage, highlighted by eight brilliant-cut diamonds, white precious metal mounted, stamped '9ct', *diameter 2.6cm.*

£500 - 600

246

A PAIR OF DIAMOND CLUSTER EARRINGS

The clusters composed of multiple graduated claw set brilliant-cut diamonds, to screw back fittings, white precious metal mounted, *cluster diameter 9mm.*

£700 - 900

247

A PAIR OF DIAMOND STUD EARRINGS

The brilliant-cut diamonds in simple four claw settings, white precious metal mounted, stamped '750', *total diamond weight approximately 1ct.*

£1,200 - 1,400

248

AN EARLY 20TH CENTURY DIAMOND MOUNTED HARDSTONE CARD CASE

The rectangular case of chalky-green coloured hardstone, possibly bowenite, with hinged cover mounted with a border of rose-cut diamonds, the front centred with a diamond set geometric pierced clasp, with onyx highlights, the reverse with twin hinge detail similarly diamond set, the front also applied with a diamond set coronet, indistinctly stamped with a lozenge-shaped maker's mark with initials M B, and French dog's head stamp for platinum (post-1912), (bowenite untested), *dimensions 8.9cm x 5.5cm.*

£600 - 800

249

TIFFANY & CO: A PAIR OF DIAMOND EARSTUDS

Each round brilliant-cut diamond in four claw setting, to threaded post and screw-back fittings, signed and hallmarked for platinum, in maker's case and outer box, *total diamond weight approximately 0.25ct.*

£500 - 600

250

A PAIR OF DIAMOND EARSTUDS

Each round brilliant-cut diamond in four claw setting, on post and butterfly fittings, stamped '750', cased, *total diamond weight approximately 0.52ct.*

£600 - 800

Accompanied by a report issued from the International Gemmological Institute, dated 1 July 2002, report no. F3B96558, stating that the diamonds have F colour and VS2 to S11 clarity. Also accompanied by Leo Diamond retailer's certificate card.

251

A DIAMOND FIVE STONE RING

Composed of five uniform claw set princess-cut diamonds, to white precious metal mount stamped 'pt950' and signed 'Iliana', *total diamond weight approximately 1.25ct, ring size M.*

£500 - 700

252

AN ART DECO STYLE TANZANITE AND DIAMOND RING

The rectangular step-cut tanzanite claw set between millegrained stepped baguette-cut diamond shoulders, white precious metal mounted, stamped '18ct', *ring size P.*

£1,200 - 1,500

253

A SYNTHETIC SAPPHIRE AND DIAMOND RING

The octagonal mixed-cut synthetic sapphire in claw setting, between stepped millegrained shoulders of single-cut diamonds, to white precious metal mount stamped '18ct plat', *ring size K½.*

£600 - 800

254

AN ART DECO STYLE DIAMOND RING

The central brilliant-cut diamond in square setting, within a square hoop surround of smaller brilliants, between baguette-cut diamond shoulders, white precious metal mounted, stamped '18ct', *total diamond weight approximately 0.75ct, ring size O/P.*

£600 - 800

255

TIFFANY & CO: A DIAMOND SET RING

The panelled white precious metal band highlighted with pairs of brilliant-cut diamonds, signed 'T&Co' and stamped '750', in maker's case, *ring size I½.*

£300 - 500



241



245



246



247



242

243



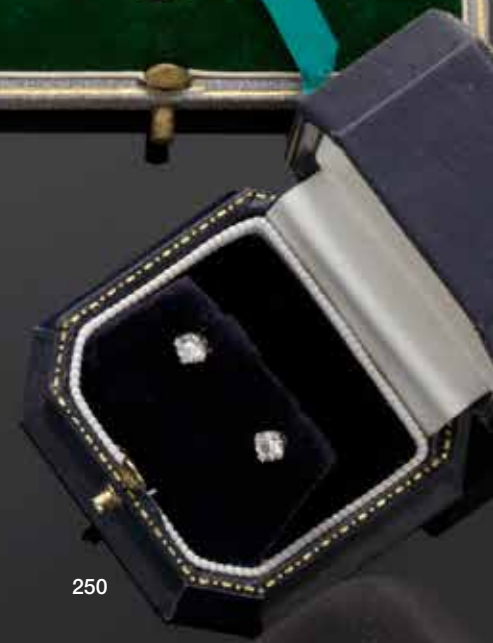
244



249



248



250



255



252



251



253



254

256[≈]

A PAIR OF RUBY AND DIAMOND EARSTUDS

Each circular mixed-cut ruby claw set within a border of brilliant-cut diamonds, on post and butterfly fittings, stamped '750', *diameter 0.95cm*.

£500 - 700

257[≈]

A CULTURED PEARL, RUBY AND DIAMOND RING AND EARCLIPS SUITE

Each of spiral cluster design, centred with a cultured pearl to brilliant-cut diamond and oval-cut ruby borders, white precious metal mounted, *ring size M, earclips length 2.4cm*. (2)

£1,200 - 1,500

258

A PAIR OF DIAMOND SNOWFLAKE CLUSTER EARRINGS

Each tiered snowflake cluster set with single-cut diamonds, on post and hinged clip fittings, 18ct white gold mounted, *length 1.9cm*.

£800 - 1,000

259

A PINK SAPPHIRE AND DIAMOND RING

The rectangular step-cut pink sapphire, with canted corners, millegrain collet set within a surround of brilliant-cut diamonds, shank stamped '18ct', *ring size N*.

£600 - 800

260

AN EMERALD AND DIAMOND CLUSTER RING

The oval mixed-cut emerald collet set within a cushion-shaped panel of graduated single-cut diamonds, two colour precious metal mounted, *ring size I½*.

£600 - 800

261[≈]

A RUBY AND DIAMOND BAND RING

The wide tapered band centred with a pear-shaped ruby in collet setting, to pierced lattice ground highlighted by brilliant-cut diamonds and engraved flowerheads, bordered by channels of step-cut rubies, two colour precious metal mounted, *ring size N*.

£1,000 - 1,500

262^Ω

BUCHERER: AN AMETHYST DRESS RING

Of bi-coloured and reeded design, set to the front with an oval-cut amethyst, signed Bucherer, *ring size N½ (leading edge)*.

£500 - 700

263[≈]

A RUBY AND DIAMOND CLUSTER RING

The abstract cluster of oval-cut rubies and single-cut diamonds to a tiered claw setting, white precious metal mounted, stamped '18k', *ring size N½*.

£600 - 800

264

AN EMERALD AND DIAMOND CLUSTER RING

The tiered flowerhead cluster centred with a brilliant-cut diamond, to a double row border of pear-cut emeralds, framed by further brilliants, yellow precious metal mounted, *ring size O*.

£700 - 900

265

A PAIR OF GARNET AND DIAMOND EAR PENDANTS, AN EDWARDIAN PENDANT, A DIAMOND CROSS PENDANT ON CHAIN AND A BRACELET

The ear pendants with rose-cut diamond trefoil surmount and tear-shaped cabochon garnet drop below, on loop fittings, together with an Edwardian green and white paste pendant necklace, an 18ct white gold mounted brilliant-cut diamond set 'Latin' cross pendant, on 9ct white gold chain, and a further bracelet, (one stone missing), *earpendants length 3.7cm*. (4)

£500 - 600

266[≈]

A RUBY AND DIAMOND LINE BRACELET

The articulated bracelet of square and rectangular panel links, alternately set with pairs of pear-shaped rubies and single brilliant-cut diamonds, to foliate engraved sides, white precious metal mounted, *length 18cm*.

£800 - 1,200

267

A PEARL SET LONG CHAIN AND A CULTURED PEARL BROOCH

The belcher-link long chain spaced by eight baroque pearls, with bolt ring clasp, stamped '15', (pearls untested for origin), together with a cultured pearl wreath brooch, 9ct white gold mounted, signed 'C&F' for Cropp & Farr, *necklace length 160cm*. (2)

£400 - 500

268

TWO FANCY-LINK CHAIN NECKLACES

Comprising a yellow precious metal collar necklace, unmarked, and an 18ct gold baton-link necklace, *lengths 38cm and 70cm respectively*. (2)

£500 - 600



256



257



258



259



260



261



262



265 (part)



265 (part)



265 (part)



263



264



267 (part)

265 (part)

266

268



278

269

AN ENAMEL AND DIAMOND DRESS RING

The central cluster of old and rose-cut diamonds in pinched collet settings, to a tapered scrolling mount with blue enamel ground, the shank with Portuguese marks, *ring size S.*

£1,000 - 1,500

270

A VARI GEM-SET PENDANT NECKLACE

The central openwork panel of foliate scrolling design, set throughout with oval-cut citrines, single and lasque-cut diamonds, suspending a similarly set foliate drop below, between similarly set panels with cultured pearl highlights, to a tubular-link back chain, with possible Portuguese mark to clasp, *length 40cm.*

£600 - 800

271

A GARNET FRINGE NECKLACE

The fringe of graduated foliate drops set with oval and navette-shaped garnets, to a circular-cut garnet back chain, yellow precious metal mounted, the clasp stamped 'KER', *length 44cm.*

£700 - 900

272

A GEORGIAN GOLD MOUNTED GARNET RIVIERE NECKLACE AND CROSS PENDANT

The graduating oval table-cut garnets in closed back settings, with central detachable cross pendant below, *length 42cm.*

£800 - 1,000

273

A CONTINENTAL DIAMOND CROSS PENDANT AND A DIAMOND CLUSTER RING

The pendant with rose-cut diamonds in foiled closed-back pinched collet settings, and hinged drop below, together with a fancy cluster ring, similarly set with rose and lasque-cut diamonds in foiled closed-back settings, to a scroll engraved shank, *pendant length 3.5cm, ring size M. (2)*

£500 - 700

274

A DIAMOND THREE STONE RING AND A DIAMOND STICK PIN

The ring with rose-cut diamonds in foiled closed-back pinched collet setting, spaced by smaller diamond points, between foliate engraved shoulders, the stick pin with a pierced cluster terminal of graduated old-cut diamonds, to later pin stamped '585', *ring size M½. (2)*

£500 - 700

275

A DIAMOND DOUBLE ROW HALF HOOP RING

The two rows of old mine-cut diamonds in pinched collet settings, between scroll detailed shoulders, *ring size M.*

£500 - 700

276

A 19TH CENTURY DIAMOND PANEL RING

The shaped openwork panel of quatrefoil outline, set with a combination of old and single-cut diamonds (one diamond later replaced), between foliate shoulders, to a pierced shank of chain-link design, gold and silver mounted, *ring size M.*

£700 - 900

277

A 19TH CENTURY BELCHER-LINK LONG CHAIN

Composed of links with beaded cluster detail, the clasp modelled as a gloved hand with frilled cuff, and wearing an emerald set ring, *length 126cm.*

£800 - 1,200

278

AN ART DECO DIAMOND RING

The oval old-cut diamond in claw setting, between baguette-cut diamond set shoulders, shank stamped 'plat', *principal diamond weight approximately 0.80ct, ring size O.*

£1,000 - 1,500

279

A LATE VICTORIAN SEED PEARL AND VARI GEM-SET NECKLACE

Each link set with a vari-coloured gemstone, to include peridot, sapphire, garnet and amethyst, between seed pearl set foliate detail, suspending a central peridot drop to the centre, gold mounted, in fitted case, *length 39cm.*

£700 - 900

See front cover illustration

280

AN EMERALD AND DIAMOND SET BANGLE

The hinged oval bangle applied with a pierced ribbon bow panel, alternately set with circular-cut emeralds and brilliant-cut diamonds, bi-colour precious metal mounted, *inner diameter 6cm.*

£500 - 600



269

270

271

273

274

272

275

276

277





280

281

A VARI GEM-SET BRACELET

Designed as a continuous row of collet-set oval cabochon, circular and oval-cut gemstones, including fire opal, garnet and zircon, spaced by curb-link chain sections, *length 21cm.*

£500 - 700

282

A MOTHER O' PEARL AND SAPPHIRE SET GENTLEMAN'S DRESS SET

Comprising a pair of cufflinks, four buttons and two studs, each mother o' pearl panel with engraved chequerboard decoration, centred with a square-cut sapphire, (sapphires untested for natural versus synthetic origin), to two colour precious metal mounts stamped '18ct & plat', in fitted case by The Goldsmiths & Silversmiths Company Ltd, *cufflinks panel length 1.3cm.*

£600 - 800

283

A PAIR OF EDWARDIAN 18CT GOLD CUFFLINKS

Each oval panel with engraved crests, to belcher-link fittings and baton terminals, hallmarked for Birmingham 1901, cased, *panel length 1.9cm.*

£150 - 200

284

A PAIR OF OPAL MOSAIC AND DIAMOND CUFFLINKS

Each rectangular opal mosaic with black panel backing, bordered by brilliant-cut diamonds, to hinged baton fittings stamped '18k', *panel length 1.9cm.*

£500 - 600

285

A PAIR OF MALACHITE, DIAMOND AND RUBY SET FOX MASK CUFFLINKS

Each circular concave malachite panel applied with a rose-cut diamond set fox mask, highlighted by cabochon ruby eyes, (rubies untested for natural versus synthetic origin, one diamond deficient), to chain-link fittings with panel terminals, *diameter 1.6cm.*

£500 - 700

286

A PAIR OF ENAMEL HORSE HEAD CUFFLINKS

Each oval panel decorated with a horse's profile in shades of brown and grey, with chain-link connections between, signed 'A&W' and stamped '9ct', with Asprey case, *panel length 1.75cm.*

£600 - 800

287

A PAIR OF DIAMOND AND AGATE CUFFLINKS

Each oval agate panel with carved chequerboard decoration, centred with a collet set old-cut diamond, with chain-link connections between, stamped '18', *panel length 1.6cm.*

£500 - 700



281

288

A PAIR OF RUBY AND DIAMOND CUFFLINKS

Each circular panel centred with a cluster of brilliant-cut diamonds, to a border of circular-cut rubies, on hinged baton fittings, *diameter 1.55cm.*

£500 - 600

289

A COLLECTION OF ANTIQUE AND LATER JEWELLERY

Comprising a diamond set panel brooch, the oval panel with pierced linear decoration, centred with an old-cut diamond, a pearl, diamond and gem set navette-shaped brooch, a Victorian diamond, enamel and seed pearl panel brooch, inscribed to reverse, a polychrome enamel and pearl bar brooch, of stylised foliate form, a novelty bar brooch, modelled as a fox and riding crop, an 18ct gold enamel and diamond set brooch, a gem set circlet brooch, a vari gem-set oval panel ring, two pairs of jade earrings, and a pair of reeded ear hoops, (all pearls untested for origin, all jade untested for treatments and enhancements), *first brooch length 3.25cm.* (11)

£1,000 - 1,500

290

A 'PINK PANTHER' BROOCH, A SAPPHIRE BRACELET AND A SAPPHIRE PENDANT

The 'pink panther' holding a ruby in one paw and a glazed hoop enclosing diamonds in the other paw, with ruby set eyes, stamped '750', together with a sapphire and diamond bracelet, the central rigid section claw set with oval sapphires and spaced with pairs of brilliant-cut diamonds, between curb-link chain sections, clasp stamped '750', and a small sapphire set flower pendant, stamped '14k', *brooch length 4.5cm, bracelet length approximately 17.5cm.* (3)

£500 - 700

See inside back cover illustration

291

A LARGE QUANTITY OF ASSORTED COSTUME JEWELLERY

To include necklaces, bracelets, brooches, wristwatches etc.

This lot is being sold on behalf of the UK charity PACE, an Aylesbury based charity and school providing intensive input for children with motor disorders such as Cerebral Palsy. (Charity number 1011133). The items have been kindly donated, and are being offered for sale at NO RESERVE.

292

A LARGE COLLECTION OF COSTUME JEWELLERY

Comprising assorted necklaces, bracelets, earrings and rings.

This lot is being sold on behalf of the charity Heart Research UK, which funds community projects and research into heart disease (Charity number 1044821). The items have been kindly donated, and are being offered for sale at NO RESERVE.

293

A LARGE COLLECTION OF COSTUME JEWELLERY

Comprising assorted necklaces, bracelets, earrings and rings.

This lot is being sold on behalf of the charity Heart Research UK, which funds community projects and research into heart disease (Charity number 1044821). The items have been kindly donated, and are being offered for sale at NO RESERVE.

127, Becon Street, London, E.C. 1



282



283



284



285



286



287



289 (part)



288



289 (part)





WATCHES



294

ANTIQUORUM PRESTIGE: AN 18CT GOLD GENTLEMAN'S WRISTWATCH

The cushion-shaped dial with black Roman numerals, outer scale, day, month and moonphase apertures, blued steel hands and seconds hand, to movement signed 'Wilka Geneve Swiss' and numbered 89, with snap-on back cover, on black strap, *watch head width 3.1cm.*

£700 - 900

295

INTERNATIONAL WATCH COMPANY: A GENTLEMAN'S WRISTWATCH

The circular signed silvered dial with date display, arrowhead markers and centre sweeps seconds hand, to an automatic movement, yellow precious metal case and unassociated leather strap, *dial diameter 2.9cm.*

£700 - 900

296

INTERNATIONAL WATCH COMPANY: A GENTLEMAN'S WRISTWATCH

The square signed dial with gilt baton markers and date display, to a yellow precious metal case and later unassociated strap, *dial length 2.5cm.*

£500 - 600

297

ROLEX: A GENTLEMAN'S OYSTER STAINLESS STEEL WRISTWATCH

The circular signed dial with luminous arrowhead and square markers, to stainless steel case, the shoulders numbered 740547 and 6044, on later unassociated leather strap, *dial diameter 2.5cm.*

£300 - 500

298

UNIVERSAL: A GENTLEMAN'S WRISTWATCH

The circular signed gilt dial of brushed and polished finish, with tapered hands and centre sweeps seconds hand, to an automatic movement, yellow precious metal case and unassociated plaited strap, *dial diameter 3.1cm.*

£700 - 900

299

A LADY'S 9CT GOLD WRISTWATCH

The circular white dial with black Roman numerals and subsidiary seconds hand, to a 9ct gold case, the front of the watch head detaching to reveal concealed winder and hinged inner case, numbered 323517, with import marks for Glasgow 1929, to later unassociated strap, *dial diameter 2.3cm.*

£400 - 500



294



295



296



297



298



299



305

300

A GENTLEMAN'S WRISTWATCH

The rectangular two-tone dial signed 'Geneva', with gilt Arabic numerals and subsidiary seconds hand, to yellow precious metal case with geometric shoulders, signed 'Lemieux' and stamped '14k', and jewelled manual movement signed 'Welsbro', on later unassociated brick-link bracelet also stamped '14k', *dial length 2.1cm.*

£600 - 800

301

OMEGA: A GENTLEMAN'S CONSTELLATION CHRONOMETER WRISTWATCH

The signed circular gilt dial with baton markers and date display, to gilt octagonal bezel and stainless steel case, numbered 1333, on a tapered two tone bracelet with signed clasp, with maker's box and papers, *dial diameter 2.7cm.*

£200 - 300

302

EBEL: A GENTLEMAN'S BI-COLOUR WRISTWATCH

The circular signed white dial with black Roman numerals and date display, to a stainless steel parcel-gilt case with screwhead detail and parcel-gilt signed bracelet, case numbered '54610618', with signed box and papers, *dial diameter 2.6cm.*

£300 - 400

303

CHOPARD: A GENTLEMAN'S WRISTWATCH

The circular silvered dial of brushed finish, with bead markers, to an automatic movement, the signed case with textured bezel, numbered 129006, and textured tapered bracelet stamped '0,750', *dial diameter 2.9cm.*

£1,000 - 1,500

304

FRERE: A GENTLEMAN'S DIAMOND SET WRISTWATCH

The circular signed blue dial with single-cut diamond markers, to a polished case numbered 11785, the tapered plaited-link bracelet stamped '750', with two spare bracelet sections, *dial diameter 2.8cm.*

£800 - 1,200

305

TECHNOMARINE: A GENTLEMAN'S DIAMOND SET CHRONOGRAPH WRISTWATCH

The circular signed mother o' pearl dial with brilliant-cut diamond set markers, date display, subsidiary chronograph dials and outer scale, to stainless steel case with white rubbed inlaid bezel and sides, on signed white leather strap, in maker's case, *dial diameter 3.1cm.*

£300 - 500



300



301



302



303

304

306

MOVADO: A LADY'S DIAMOND SET WRISTWATCH

The circular signed silvered dial with baton markers, to a two colour case with single-cut diamond set bezel and fluted border, the 9ct white gold snake-link bracelet with brilliant-cut diamond set shoulders, signed 'J G & S', *dial diameter 1cm.*

£500 - 600

307

LONGINES: A LADY'S DIAMOND SET WRISTWATCH

The circular signed gilt dial with baton markers, to brilliant-cut diamond set shoulders and tapered textured bracelet, stamped '750', (later extended), *dial diameter 1.1cm.*

£500 - 700

308

BAUME & MERCIER: AN 18CT GOLD AND DIAMOND SET QUARTZ WRISTWATCH

The signed gilt rectangular dial with diamond set numerals, gilt hands, within a bezel and shoulders of brilliant-cut diamonds, to integral polished brick-link bracelet strap, reverse of case numbered 18748 9 1438421, (with two additional strap sections), *dial diameter 1.6cm.*

£600 - 800

309

LONGINES: A LADY'S WRISTWATCH, CIRCA 1940

The square signed silvered dial with gilt Arabic numerals, arrowhead and bead markers, to signed case and jewelled movement, the fancy hoop-link bracelet with reeded decoration, case and bracelet with French eagle's head control marks, *dial length 1.3cm.*

£600 - 800

310

A LADY'S DIAMOND COCKTAIL WATCH

The circular silvered dial with baton markers, signed 'Nivada', to case with foliate engraved borders, stamped 'platine' and numbered 5487648, the millegrained bezel and shaped stepped shoulders with single and brilliant-cut diamonds, (strap deficient), *dial diameter 1.15cm.*

£500 - 700

311

A DIAMOND AND CULTURED PEARL COCKTAIL WATCH

The circular silvered dial with baton markers, signed 'Moviga', to a single-cut diamond set bezel, the case stamped '14kt gold', on a double strand cultured pearl bracelet, *length 18cm.*

£500 - 600

312

A DIAMOND SET COCKTAIL WATCH

The rectangular dial with black Arabic numerals, within a bezel of brilliant-cut diamonds, between hinged diamond set pierced work shoulders, each incorporating a trapezoid-cut diamond highlight, to diamond set bracelet with geometric links, *length 16cm.*

£1,000 - 1,500

313

OMEGA: A LADY'S 18CT GOLD DE VILLE WRISTWATCH

The signed white cushion-shaped dial within polished bezel, to integral tapering brick-link bracelet strap, reverse of case numbered 54149693, clasp numbered 6201/821, (with two additional loose sections to bracelet), *length 16.3cm.*

£500 - 700

314

A LADY'S ART DECO DIAMOND COCKTAIL WATCH

The rectangular silvered dial with Arabic numerals and outer minute scale, to a brilliant-cut diamond set case and pierced tapered shoulders of geometric design, on a black cordette strap, in fitted case, *dial length 1.4cm.*

£700 - 900



306

307

308

309

311

312

313

314

310

315

DIOR VIII: A GENTLEMAN'S AUTOMATIC BLACK CERAMIC WRISTWATCH

The signed black dial with diamond set inner circle, applied with faceted baton arrow numerals, luminous arrow hands, sweep seconds hand, within three dimensional pyramidal black ceramic bezel and matching integral bracelet strap, numbered CD1245E0 and FM7983, water resistant 50 metres, reverse signed 'VIII Place Vendome', to stainless steel folding clasp, cased, with guarantee card dated 14.11.2011, watch head diameter 3.8cm.

£600 - 800

316

DIOR VIII: A LADY'S BLACK CERAMIC WRISTWATCH

The signed black dial with diamond set inner circle, applied with faceted baton arrow numerals, luminous arrow hands, sweep seconds hand, within three dimensional pyramidal black ceramic bezel and matching integral bracelet strap, numbered CD1231E0 and FM6824, water resistant 50 metres, reverse signed 'VIII Place Vendome', to stainless steel folding clasp, cased, with guarantee card dated 14.11.11, watch head diameter 3.3cm.

£500 - 600



316



315

317

CONCORD: A GENTLEMAN'S MARINER STAINLESS STEEL WRISTWATCH AND A LADY'S WRISTWATCH ENSUITE

Each with a circular signed mother o' pearl dial, highlighted with brilliant-cut diamond markers, to panelled bezel and tapered brick-link bracelet, jointly cased in maker's box, dial diameters 3.2cm and 2.4cm respectively. (2)

£600 - 800

318

GUCCI: A LADY'S DIAMOND SET WRISTWATCH

The square signed shell dial with stylised white enamel Roman numerals to 12, to shaped case with brilliant-cut diamond set bezel, numbered 11065413, on a signed black leather strap, in maker's case, with retailer's insurance certificate, dial length 1.8cm.

£300 - 400

319

BULGARI: A LADY'S DIAMOND SET WRISTWATCH

The circular signed mother o' pearl dial with brilliant-cut diamond set markers, to stainless steel case with signed bezel, on later unassociated mauve leather strap, dial diameter 2.5cm.

£500 - 600



317

320

GEO VANI: A GENTLEMAN'S STAINLESS STEEL AND DIAMOND CHRONOGRAPH WRISTWATCH

The two colour signed dial with diamond set numerals, with seconds subsidiary dial at numeral 6, within diamond set bezel, and shoulders, to numbered GOM509, stamped '5ATM Water Resistant', watch head diameter 38mm.

£500 - 600

321

A GENTLEMAN'S CHRONOGRAPH WRISTWATCH, BY HAMILTON, A LADY'S DIAMOND SET ECLISSE WRISTWATCH, BY GIO MONACO, A PEN AND A PAIR OF CUFFLINKS

The first watch with circular signed dial, Arabic numeral at 12, arrowhead markers, chronograph dials and date display, to stainless steel case with glazed back and automatic movement, on signed leather strap, the second watch with signed mother o' pearl dial, centred with a brilliant-cut diamond set sunburst, on signed blue leather strap, together with a ballpoint pen and a pair of square panel cufflinks, first watch dial diameter 3.8cm. (4)

£500 - 600

322

FABER CASTELL: A STAINLESS STEEL FOUNTAIN PEN PRESENTATION SET

The fountain pen with engine-turned detailing to the shaft, signed to the pull-off cover, the nib stamped '750 18k', with bottle of black ink, and ceramic arm rest, contained in presentation box, pen length 12.8cm.

£150 - 200



318



319



321 (part)



320



321 (part)



321 (part)



321 (part)

322 (part)



323

323
TECHNOMARINE: A GENTLEMAN'S STAINLESS STEEL AND CERAMIC CHRONOGRAPH WRISTWATCH AND A MATCHED LADY'S WRISTWATCH

Each with a circular signed silvered dial with subsidiary chronograph dials, date display and brilliant-cut diamond markers, to stainless steel case and bracelet with white ceramic accents, with maker's boxes, *dial diameters 2.9cm and 2.4cm. (2)*

£400 - 600

324
CARTIER: A LADY'S BAIGNOIRE WRISTWATCH

The oval white dial with black Arabic numerals, to case numbered 780946238 with cabochon winder, the folding clasp stamped '750 18k', the dial, case and clasp signed, with strap indistinctly signed 'Must de Cartier', in maker's box, *dial length 2.4cm.*

£800 - 1,200

325
CHAUMET: A LADY'S WRISTWATCH

The circular signed textured white dial to polished silver case, signed and numbered B1189, with quartz movement and unassociated strap, *dial diameter 1.7cm.*

£200 - 250

326

TIFFANY & CO: A LADY'S GEM SET WRISTWATCH

The rectangular signed silvered dial with subsidiary seconds dial, baguette-cut green stone and single-cut white stone markers, to mechanical movement and unsigned green leather strap, *dial length 2.4cm.*

£500 - 600

327

GUCCI: A LADY'S DIAMOND SET WRISTWATCH

The square signed shell dial with stylised white enamel Roman numerals to 12, to shaped case with brilliant-cut diamond set bezel, numbered 10930244, on a signed black leather strap, in maker's case, with retailer's insurance certificate, *dial length 1.8cm*

£300 - 400

328

LES MUST DE CARTIER: A LADY'S SILVER TANK QUARTZ WRISTWATCH

The rectangular signed dial with dark blue Roman numerals and blued steel hands, with blue cabochon winder, reverse numbered 6057002/05766, on unassociated black leather strap, with original box and guarantee card dated 1993, *width of watch head 2cm.*

£200 - 300

329

A FRENCH GOLD AND HALF PEARL SET LADY'S WRISTWATCH

The circular dial with blue Roman numerals, within half pearl set bezel, to hinged case with stamped owl marks, the integral strap centred with a line of half pearls between fancy bead-work borders, the tongue with lozenge-shaped maker's mark, eagle's head guarantee mark and two further stamped marks, *length 16cm.*

£700 - 900

330

J. LACLOCHE: AN 18CT GOLD LADY'S WRISTWATCH

circa 1940s/50s
 The signed circular gilt dial with black Arabic numerals, blued steel hands, within polished bezel and bracelet strap of articulated disc-shaped links, twice struck with eagle's head marks, to clasp numbered 4816, length 17.5cm.

£600 - 800

331

CARTIER: A LADY'S BI-COLOUR PANTHERE WRISTWATCH

The square signed dial with black Roman numerals, to a stainless steel case with yellow metal bezel and quartz movement, on a bi-colour brick-link bracelet, case numbered 002723, *dial length 1.3cm.*

£600 - 800



324



325



326

327



328



329

330

331

332

AN ENAMEL AND SEED PEARL FLORAL FOB WATCH

The circular dial with blue Roman numerals and gilt bead border, to hunter case decorated with sinuous flowerheads in shades of purple, white and green enamel, with diamond set fleur-de-lys motif and seed pearl border, monogrammed to reverse, the case stamped '56 0,585' and numbered 308200, suspended from a purple enamel and diamond set fleur-de-lys brooch surmount, cased, *length 6.1cm.*

£600 - 800

333

AN 18CT GOLD HUNTER POCKET WATCH

The white enamel dial with black Roman numerals, gilt hands and centre sweeps seconds hand, to an 18ct gold case with floral and foliate scroll engraved sides, hallmarked for Chester 1911, *case diameter 5.6cm.*

£700 - 900

334

M I TOBIAS & CO, LIVERPOOL: AN 18CT GOLD OPEN FACE POCKET WATCH

The jewelled key wind 3/4 movement signed 'M. I. Tobias & Co, Lord Street, Liverpool', to signed white enamel dial with black Roman numerals and subsidiary seconds dial at 6, the inner case with back engraved scene of lovers, the outer case similarly engraved with pheasant shooting, cuvette stamped 'JES', the case and movement numbered 39020, *dial diameter 4.3cm.*

£500 - 700

335

AN 18CT GOLD KEYLESS WIND OPEN FACE POCKET WATCH

The white enamel dial with black Roman numerals, seconds subsidiary dial at numeral 6, blued steel hands, signed 'Dan C Burlingham, Lynn & Peterboro' and numbered 530, the outer case hallmarked for London 1878, reverse monogrammed, *case diameter 5.2cm.*

£400 - 600

336

WALTHAM: A 9CT GOLD HALF HUNTER POCKET WATCH

The signed white enamel dial with black Roman numerals, outer scale and subsidiary seconds dial, to movement signed 'American Waltham, USA ENVOY', numbered 10793392, the case stamped '18c', cuvette bearing presentation inscription, and case reverse bearing monogram, *case diameter 4.7cm.*

£300 - 500

337

WALTHAM: AN 18CT GOLD KEYLESS WIND POCKET WATCH

The signed white enamel dial with black Roman numerals, red outer chapter ring 0-60, subsidiary dial at numeral 6 and blued steel hands, to movement signed and numbered 7001775, case numbered 27548, *case diameter 5.2cm.*

£700 - 900

338

WALTHAM: AN 18CT GOLD OPEN FACE POCKET WATCH AND A 9CT GOLD HUNTER POCKET WATCH

The first with white enamel dial, black Roman numerals and subsidiary seconds dial, to an 18ct gold case hallmarked for Birmingham 1905, jewelled movement signed 'Waltham' and numbered 10552769, the second with similar signed white enamel dial, to signed jewelled movement, the case numbered 3131, *first watch case diameter 4.8cm. (2)*

£600 - 800

339

INTERNATIONAL WATCH COMPANY: A SILVER OPEN FACE POCKET WATCH

The signed white dial with black Arabic numerals, seconds subsidiary dial and blued steel hands, to inner case numbered 919299, stamped 0.900, with Swiss purity marks, the keyless wind movement numbered 891973, in engine-turned cased, *case diameter 5cm.*

£250 - 350

340

TWO 9CT GOLD KEYLESS WIND HUNTER POCKET WATCHES

The first by Waltham, with signed white enamel dial and black Roman numerals, case numbered 303554, hallmarked for Birmingham 1925, (glass deficient), the second with white enamel dial, black Roman numerals and seconds subsidiary dial, case numbered 61315, hallmarked for Birmingham 1939, both with cases signed 'ALD', *first watch diameter 4.8cm. (2)*

£500 - 700

END OF SALE

**The next Oxford Jewellery Sale will be held on
Tuesday 13 January 2015 at 11.00.**



333



336



334



335



337



338 (part)



338 (part)



339



340





The first display of
Sir William Burrell's
famous collection
outside Scotland
since 1977

BURRELL at Bonhams

An exhibition of masterpieces from the Burrell Collection, Glasgow

Open
Monday 15–Friday 19 December 2014
22, 23 and 24 (am) December

Monday 5–Friday 9 January 2015



Bonhams
101 New Bond Street
London W1S 1SR

THE OAK INTERIOR

including the Principal Contents of Yelford Manor
21 and 22 January 2015

ENQUIRIES

+44 (0) 1865 853 667
oak@bonhams.com



Bonhams

NOTICE TO BIDDERS

This notice is addressed by *Bonhams* to any person who may be interested in a *Lot*, including *Bidders* and potential *Bidders* (including any eventual *Buyer* of the *Lot*). For ease of reference we refer to such persons as "*Bidders*" or "you". Our List of Definitions and Glossary is incorporated into this *Notice to Bidders*. It is at Appendix 3 at the back of the *Catalogue*. Where words and phrases are used in this notice which are in the List of Definitions, they are printed in italics.

IMPORTANT: Additional information applicable to the *Sale* may be set out in the *Catalogue* for the *Sale*, in an insert in the *Catalogue* and/or in a notice displayed at the *Sale* venue and you should read them as well. Announcements affecting the *Sale* may also be given out orally before and during the *Sale* without prior written notice. You should be alert to the possibility of changes and ask in advance of bidding if there have been any.

1. OUR ROLE

In its role as *Auctioneer* of *Lots*, *Bonhams* acts solely for and in the interests of the *Seller*. *Bonhams'* job is to sell the *Lot* at the highest price obtainable at the *Sale* to a *Bidder*. *Bonhams* does not act for *Buyers* or *Bidders* in this role and does not give advice to *Buyers* or *Bidders*. When it or its staff make statements about a *Lot* or, if *Bonhams* provides a *Condition Report* on a *Lot* it is doing that on behalf of the *Seller* of the *Lot*. *Bidders* and *Buyers* who are themselves not expert in the *Lots* are strongly advised to seek and obtain independent advice on the *Lots* and their value before bidding for them. The *Seller* has authorised *Bonhams* to sell the *Lot* as its agent on its behalf and, save where we expressly make it clear to the contrary, *Bonhams* acts only as agent for the *Seller*. Any statement or representation we make in respect of a *Lot* is made on the *Seller's* behalf and, unless *Bonhams* sells a *Lot* as principal, not on our behalf and any *Contract for Sale* is between the *Buyer* and the *Seller* and not with us. If *Bonhams* sells a *Lot* as principal this will either be stated in the *Catalogue* or an announcement to that effect will be made by the *Auctioneer*, or it will be stated in a notice at the *Sale* or an insert in the *Catalogue*.

Bonhams does not owe or undertake or agree to any duty or responsibility to you in contract or tort (whether direct, collateral, express, implied or otherwise). If you successfully bid for a *Lot* and buy it, at that stage *Bonhams* does enter into an agreement with the *Buyer*. The terms of that contract are set out in our *Buyer's Agreement*, which you will find at Appendix 2 at the back of the *Catalogue*. This will govern *Bonhams'* relationship with the *Buyer*.

2. LOTS

Subject to the *Contractual Description* printed in bold letters in the *Entry* about the *Lot* in the *Catalogue* (see paragraph 3 below), *Lots* are sold to the *Buyer* on an "as is" basis, with all faults and imperfections. Illustrations and photographs contained in the *Catalogue* (other than photographs forming part of the *Contractual Description*) or elsewhere of any *Lots* are for identification purposes only. They may not reveal the true condition of the *Lot*. A photograph or illustration may not reflect an accurate reproduction of the colour(s) of the *Lot*. *Lots* are available for inspection prior to the *Sale* and it is for you to satisfy yourself as to each and every aspect of a *Lot*, including its authorship, attribution, condition, provenance, history, background, authenticity, style, period, age, suitability, quality, roadworthiness (if relevant), origin, value and estimated selling price (including the *Hammer Price*). It is your responsibility to examine any *Lot* in which you are interested. It should be remembered that the actual condition of a *Lot* may not be as good as that indicated by its outward appearance. In particular, parts may have been replaced or renewed and *Lots* may not be authentic or of satisfactory quality; the inside of a *Lot* may not be visible and may not be original or may be damaged, as for example where it is covered by upholstery or material. Given the age of many *Lots* they may have been damaged and/or repaired and you should not assume that a *Lot* is in good condition. Electronic or mechanical parts may not operate or may not comply with current statutory requirements. You should not assume that electrical items designed to operate on mains electricity will be suitable for connection to the mains electricity supply and you should obtain a report from

a qualified electrician on their status before doing so. Such items which are unsuitable for connection are sold as items of interest for display purposes only. If you yourself do not have expertise regarding a *Lot*, you should consult someone who does to advise you. We can assist in arranging facilities for you to carry out or have carried out more detailed inspections and tests. Please ask our staff for details.

Any person who damages a *Lot* will be held liable for the loss caused.

3. DESCRIPTIONS OF LOTS AND ESTIMATES

Contractual Description of a *Lot*

The *Catalogue* contains an *Entry* about each *Lot*. Each *Lot* is sold by its respective *Seller* to the *Buyer* of the *Lot* as corresponding only with that part of the *Entry* which is printed in bold letters and (except for the colour, which may be inaccurately reproduced) with any photograph of the *Lot* in the *Catalogue*. The remainder of the *Entry*, which is not printed in bold letters, represents *Bonhams'* opinion (given on behalf of the *Seller*) about the *Lot* only and is not part of the *Contractual Description* in accordance with which the *Lot* is sold by the *Seller*.

Estimates

In most cases, an *Estimate* is printed beside the *Entry*. *Estimates* are only an expression of *Bonhams'* opinion made on behalf of the *Seller* of the range where *Bonhams* thinks the *Hammer Price* for the *Lot* is likely to fall; it is not an *Estimate* of value. It does not take into account any VAT or *Buyer's Premium* payable. *Lots* can in fact sell for *Hammer Prices* below and above the *Estimate*. Any *Estimate* should not be relied on as an indication of the actual selling price or value of a *Lot*. *Estimates* are in the currency of the *Sale*.

Condition Reports

In respect of most *Lots*, you may ask for a *Condition Report* on its physical condition from *Bonhams*. If you do so, this will be provided by *Bonhams* on behalf of the *Seller* free of charge. *Bonhams* is not entering into a contract with you in respect of the *Condition Report* and accordingly does not assume responsibility to you in respect of it. Nor does the *Seller* owe or agree to owe you as a *Bidder* any obligation or duty in respect of this free report about a *Lot*, which is available for your own inspection or for inspection by an expert instructed by you. However, any written *Description* of the physical condition of the *Lot* contained in a *Condition Report* will form part of the *Contractual Description* of the *Lot* under which it is sold to any *Buyer*.

The *Seller's* responsibility to you

The *Seller* does not make or agree to make any representation of fact or contractual promise, *Guarantee* or warranty and undertakes no obligation or duty, whether in contract or in tort (other than to the eventual *Buyer* as set out above), in respect of the accuracy or completeness of any statement or representation made by him or on his behalf, which is in any way descriptive of any *Lot* or as to the anticipated or likely selling price of any *Lot*. Other than as set out above, no statement or representation in any way descriptive of a *Lot* or any *Estimate* is incorporated into any *Contract for Sale* between a *Seller* and a *Buyer*.

Bonhams' responsibility to you

You have the opportunity of examining the *Lot* if you want to and the *Contract for Sale* for a *Lot* is with the *Seller* and not with *Bonhams*; *Bonhams* acts as the *Seller's* agent only (unless *Bonhams* sells the *Lot* as principal).

Bonhams undertakes no obligation to you to examine, investigate or carry out any tests, either in sufficient depth or at all, on each *Lot* to establish the accuracy or otherwise of any *Descriptions* or opinions given by *Bonhams*, or by any person on *Bonhams'* behalf, whether in the *Catalogue* or elsewhere.

You should not suppose that such examinations, investigations or tests have occurred.

Bonhams does not make or agree to make any representation of fact, and undertakes no obligation or duty (whether in contract or tort) in respect of the accuracy or completeness of any statement or representation made by *Bonhams* or on

Bonhams' behalf which is in any way descriptive of any *Lot* or as to the anticipated or likely selling price of any *Lot*. No statement or representation by *Bonhams* or on its behalf in any way descriptive of any *Lot* or any *Estimate* is incorporated into our *Buyer's Agreement*.

Alterations

Descriptions and *Estimates* may be amended at *Bonhams'* discretion from time to time by notice given orally or in writing before or during a *Sale*.

THE *LOT* IS AVAILABLE FOR INSPECTION AND YOU MUST FORM YOUR OWN OPINION IN RELATION TO IT. YOU ARE STRONGLY ADVISED TO EXAMINE ANY *LOT* OR HAVE IT EXAMINED ON YOUR BEHALF BEFORE THE *SALE*.

4. CONDUCT OF THE SALE

Our *Sales* are public auctions which persons may attend and you should take the opportunity to do so. We do reserve the right at our sole discretion to refuse admission to our premises or to any *Sale* without stating a reason. We have complete discretion as to whether the *Sale* proceeds, whether any *Lot* is included in the *Sale*, the manner in which the *Sale* is conducted and we may offer *Lots* for *Sale* in any order we choose notwithstanding the numbers given to *Lots* in the *Catalogue*. You should therefore check the date and starting time of the *Sale*, whether there have been any withdrawals or late entries. Remember that withdrawals and late entries may affect the time at which a *Lot* you are interested in is put up for *Sale*. We have complete discretion to refuse any bid, to nominate any bidding increment we consider appropriate, to divide any *Lot*, to combine two or more *Lots*, to withdraw any *Lot* from a *Sale* and, before the *Sale* has been closed, to put up any *Lot* for auction again. Auction speeds can exceed 100 *Lots* to the hour and bidding increments are generally about 10%. However these do vary from *Sale* to *Sale* and from *Auctioneer* to *Auctioneer*. Please check with the department organising the *Sale* for advice on this. Where a *Reserve* has been applied to a *Lot*, the *Auctioneer* may, in his absolute discretion, place bids (up to an amount not equalling or exceeding such *Reserve*) on behalf of the *Seller*. We are not responsible to you in respect of the presence or absence of any *Reserve* in respect of any *Lot*. If there is a *Reserve* it will normally be no higher than the lower figure for any *Estimate* in the *Catalogue*, assuming that the currency of the *Reserve* has not fluctuated adversely against the currency of the *Estimate*. The *Buyer* will be the *Bidder* who makes the highest bid acceptable to the *Auctioneer* for any *Lot* (subject to any applicable *Reserve*) to whom the *Lot* is knocked down by the *Auctioneer* at the fall of the *Auctioneer's* hammer. Any dispute as to the highest acceptable bid will be settled by the *Auctioneer* in his absolute discretion. All bids tendered will relate to the actual *Lot* number announced by the *Auctioneer*. An electronic currency converter may be used at the *Sale*. This equipment is provided as a general guide as to the equivalent amount in certain currencies of a given bid. We do not accept any responsibility for any errors which may occur in the use of the currency converter. We may use video cameras to record the *Sale* and may record telephone calls for reasons of security and to assist in solving any disputes which may arise in relation to bids made at the *Sale*. At some *Sales*, for example, jewellery *Sales*, we may use screens on which images of the *Lots* will be projected. This service is provided to assist viewing at the *Sale*. The image on the screen should be treated as an indication only of the current *Lot*. It should be noted that all bids tendered will relate to the actual *Lot* number announced by the *Auctioneer*. We do not accept any responsibility for any errors which may occur in the use of the screen.

5. BIDDING

We do not accept bids from any person who has not completed and delivered to us one of our *Bidding Forms*, either our *Bidder Registration Form*, *Absentee Bidding Form* or *Telephone Bidding Form*. You will be asked for proof of identity, residence and references, which, when asked for, you must supply if your bids are to be accepted by us. Please bring your passport, driving licence (or similar photographic proof of identity) and proof of address. We may request a deposit from you before allowing you to bid. We may refuse entry to a *Sale* to any person even if that person has completed a *Bidding Form*.

Bidding in person

You should come to our *Bidder* registration desk at the *Sale* venue and fill out a *Bidder* Registration Form on (or, if possible, before) the day of the *Sale*. The bidding number system is sometimes referred to as "paddle bidding". You will be issued with a large card (a "paddle") with a printed number on it. This will be attributed to you for the purposes of the *Sale*. Should you be a successful *Bidder* you will need to ensure that your number can be clearly seen by the *Auctioneer* and that it is your number which is identified as the *Buyer's*. You should not let anyone else use your paddle as all *Lots* will be invoiced to the name and address given on your *Bidder* Registration Form. Once an invoice is issued it will not be changed. If there is any doubt as to the *Hammer Price* of, or whether you are the successful *Bidder* of, a particular *Lot*, you must draw this to the attention of the *Auctioneer* before the next *Lot* is offered for *Sale*. At the end of the *Sale*, or when you have finished bidding please return your paddle to the *Bidder* registration desk.

Bidding by telephone

If you wish to bid at the *Sale* by telephone, please complete a Telephone *Bidding Form*, which is available from our offices or in the *Catalogue*. Please then return it to the office responsible for the *Sale* at least 24 hours in advance of the *Sale*. It is your responsibility to check with our Bids Office that your bid has been received. Telephone calls will be recorded. The telephone bidding facility is a discretionary service and may not be available in relation to all *Lots*. We will not be responsible for bidding on your behalf if you are unavailable at the time of the *Sale* or if the telephone connection is interrupted during bidding. Please contact us for further details.

Bidding by post or fax

Absentee *Bidding Forms* can be found in the back of this *Catalogue* and should be completed and sent to the office responsible for the *Sale*. It is in your interests to return your form as soon as possible, as if two or more *Bidders* submit identical bids for a *Lot*, the first bid received takes preference. In any event, all bids should be received at least 24 hours before the start of the *Sale*. Please check your Absentee *Bidding Form* carefully before returning it to us, fully completed and signed by you. It is your responsibility to check with our Bids Office that your bid has been received. This additional service is complimentary and is confidential. Such bids are made at your own risk and we cannot accept liability for our failure to receive and/or place any such bids. All bids made on your behalf will be made at the lowest level possible subject to *Reserves* and other bids made for the *Lot*. Where appropriate your bids will be rounded down to the nearest amount consistent with the *Auctioneer's* bidding increments. New *Bidders* must also provide proof of identity and address when submitting bids. Failure to do this will result in your bid not being placed.

Bidding via the internet

Please visit our *Website* at <http://www.bonhams.com> for details of how to bid via the internet.

Bidding through an agent

Bids will be accepted as placed on behalf of the person named as the principal on the *Bidding Form* although we may refuse to accept bids from an agent on behalf of a principal and will require written confirmation from the principal confirming the agent's authority to bid. Nevertheless, as the *Bidding Form* explains, any person placing a bid as agent on behalf of another (whether or not he has disclosed that fact or the identity of his principal) will be jointly and severally liable with the principal to the *Seller* and to *Bonhams* under any contract resulting from the acceptance of a bid. Subject to the above, please let us know if you are acting on behalf of another person when bidding for *Lots* at the *Sale*.

Equally, please let us know if you intend to nominate another person to bid on your behalf at the *Sale* unless this is to be carried out by us pursuant to a Telephone or Absentee *Bidding Form* that you have completed. If we do not approve the agency arrangements in writing before the *Sale*, we are entitled to assume that the person bidding at the *Sale* is bidding on his own behalf. Accordingly, the person bidding at the *Sale* will be the *Buyer* and will be liable to pay the *Hammer Price* and *Buyer's Premium* and associated charges. If we approve the identity of your client in advance, we will be in a position to

address the invoice to your principal rather than you. We will require proof of the agent's client's identity and residence in advance of any bids made by the agent on his behalf. Please refer to our *Conditions of Business* and contact our Customer Services Department for further details.

6. CONTRACTS BETWEEN THE BUYER AND SELLER AND THE BUYER AND BONHAMS

On the *Lot* being knocked down to the *Buyer*, a *Contract for Sale* of the *Lot* will be entered into between the *Seller* and the *Buyer* on the terms of the *Contract for Sale* set out in Appendix 1 at the back of the *Catalogue*. You will be liable to pay the *Purchase Price*, which is the *Hammer Price* plus any applicable *VAT*. At the same time, a separate contract is also entered into between us as *Auctioneers* and the *Buyer*. This is our *Buyer's Agreement*, the terms of which are set out in Appendix 2 at the back of the *Catalogue*. Please read the terms of the *Contract for Sale* and our *Buyer's Agreement* contained in the *Catalogue* in case you are the successful *Bidder*. We may change the terms of either or both of these agreements in advance of their being entered into, by setting out different terms in the *Catalogue* and/or by placing an insert in the *Catalogue* and/or by notices at the *Sale* venue and/or by oral announcements before and during the *Sale*. You should be alert to this possibility of changes and ask if there have been any.

7. BUYER'S PREMIUM AND OTHER CHARGES PAYABLE BY THE BUYER

Under the *Buyer's Agreement*, a premium (the *Buyer's Premium*) is payable to us by the *Buyer* in accordance with the terms of the *Buyer's Agreement* and at rates set out below, calculated by reference to the *Hammer Price* and payable in addition to it. Storage charges and *Expenses* are also payable by the *Buyer* as set out in the *Buyer's Agreement*. All the sums payable to us by the *Buyer* are subject to *VAT*. For this *Sale* the following rates of *Buyer's Premium* will be payable by *Buyers* of *Lots*:

25% up to £50,000 of the *Hammer Price*
20% from £50,001 to £1,000,000 of the *Hammer Price*
12% from £1,000,001 of the *Hammer Price*

On certain *Lots*, which will be marked "AR" in the *Catalogue* and which are sold for a *Hammer Price* of €1,000 or greater (converted into the currency of the *Sale* using the European Central Bank Reference rate prevailing on the date of the *Sale*), the *Additional Premium* will be payable to us by the *Buyer* to cover our *Expenses* relating to the payment of royalties under the Artists Resale Right Regulations 2006. The *Additional Premium* will be a percentage of the amount of the *Hammer Price* calculated in accordance with the table below, and shall not exceed €12,500 (converted into the currency of the *Sale* using the European Central Bank Reference rate prevailing on the date of the *Sale*).

<i>Hammer Price</i>	Percentage amount
From €0 to €50,000	4%
From €50,000.01 to €200,000	3%
From €200,000.01 to €350,000	1%
From €350,000.01 to €500,000	0.5%
Exceeding €500,000	0.25%

8. VAT

The prevailing rate of *VAT* at the time of going to press is 20%, but this is subject to government change and the rate payable will be the rate in force on the date of the *Sale*.

The following symbols are used to denote that *VAT* is due on the *Hammer Price* and *Buyer's Premium*:

- † *VAT* at the prevailing rate on *Hammer Price* and *Buyer's Premium*
- Ω *VAT* on imported items at the prevailing rate on *Hammer Price* and *Buyer's Premium*
- * *VAT* on imported items at a preferential rate of 5% on *Hammer Price* and the prevailing rate on *Buyer's Premium*

- G Gold bullion exempt from *VAT* on the *Hammer Price* and subject to *VAT* at the prevailing rate on the *Buyer's Premium*
- Zero rated for *VAT*, no *VAT* will be added to the *Hammer Price* or the *Buyer's Premium*
- α *Buyers* from within the EU: *VAT* is payable at the prevailing rate on just the *Buyer's Premium* (NOT the *Hammer Price*). *Buyers* from outside the EU: *VAT* is payable at the prevailing rate on both *Hammer Price* and *Buyer's Premium*. If a *Buyer*, having registered under a non-EU address, decides that the item is not to be exported from the EU, then he should advise *Bonhams* immediately.

In all other instances no *VAT* will be charged on the *Hammer Price*, but *VAT* at the prevailing rate will be added to *Buyer's Premium* which will be invoiced on a *VAT* inclusive basis.

9. PAYMENT

It is of critical importance that you ensure that you have readily available funds to pay the *Purchase Price* and the *Buyer's Premium* (plus *VAT* and any other charges and *Expenses* to us) in full before making a bid for the *Lot*. If you are a successful *Bidder*, payment will be due to us by 4.30 pm on the second working day after the *Sale* so that all sums are cleared by the eighth working day after the *Sale*. Unless agreed by us in advance payments made by anyone other than the registered *Buyer* will not be accepted. Payment will have to be by one of the following methods (all cheques should be made payable to *Bonhams* 1793 Limited). *Bonhams* reserves the right to vary the terms of payment at any time.

Sterling personal cheque drawn on a UK branch of a bank or building society: all cheques must be cleared before you can collect your purchases;

Bankers draft/building society cheque: if you can provide suitable proof of identity and we are satisfied as to the genuineness of the draft or cheque, we will allow you to collect your purchases immediately;

Cash: you may pay for *Lots* purchased by you at this *Sale* with notes, coins or travellers cheques in the currency in which the *Sale* is conducted (but not any other currency) provided that the total amount payable by you in respect of all *Lots* purchased by you at the *Sale* does not exceed £3,000, or the equivalent in the currency in which the *Sale* is conducted, at the time when payment is made. If the amount payable by you for *Lots* exceeds that sum, the balance must be paid otherwise than in coins, notes or travellers cheques;

Sterling travellers cheques: you may pay for *Lots* purchased by you at this *Sale* with travellers cheques, provided the total amount payable by you in respect of all *Lots* purchased by you at the *Sale* does not exceed £3,000. We will need to see your passport if you wish to pay using travellers cheques;

Bank transfer: you may electronically transfer funds to our *Trust Account*. If you do so, please quote your paddle number and invoice number as the reference. Our *Trust Account* details are as follows:

Bank: National Westminster Bank Plc
Address: PO Box 4RY
250 Regent Street
London W1A 4RY
Account Name: Bonhams 1793 Limited Trust Account
Account Number: 25563009
Sort Code: 56-00-27
IBAN Number: GB 33 NWBK 560027 25563009

If paying by bank transfer, the amount received after the deduction of any bank fees and/or conversion of the currency of payment to pounds sterling must not be less than the sterling amount payable, as set out on the invoice.

Debit cards: there is no additional charge for purchases made with personal debit cards, issued by a UK bank. Debit cards issued by an overseas bank, deferred and company debit cards and all credit cards will be subject to a 2% surcharge;

Union Pay cards: these are now accepted at our Knightsbridge and New Bond Street offices, when presented in person by the card holder. These cards are subject to a 2% surcharge.

Credit cards: Visa and Mastercard only. Please note there is a 2% surcharge on the total invoice value when payments are made using credit cards. It may be advisable to notify your card provider of your intended purchase in advance to reduce delays caused by us having to seek authority when you come to pay. If you have any questions with regard to payment, please contact our Customer Services Department.

10. COLLECTION AND STORAGE

The *Buyer* of a *Lot* will not be allowed to collect it until payment in full and in cleared funds has been made (unless we have made a special arrangement with the *Buyer*). For collection and removal of purchased *Lots*, please refer to *Sale Information* at the front of the *Catalogue*. Our offices are open 9.00am – 5pm Monday to Friday. Details relating to the collection of a *Lot*, the storage of a *Lot* and our *Storage Contractor* after the *Sale* are set out in the *Catalogue*.

11. SHIPPING

Please refer all enquiries to our shipping department on:
Tel: +44 (0)20 8963 2850/2852 Fax: +44 (0)20 8963 2805
Email: shipping@bonhams.com

12. EXPORT/TRADE RESTRICTIONS

It is your sole responsibility to comply with all export and import regulations relating to your purchases and also to obtain any relevant export and/or import licence(s). Export licences are issued by Arts Council England and application forms can be obtained from its Export Licensing Unit. The detailed provisions of the export licencing arrangements can be found on the ACE website <http://www.artscouncil.org.uk/what-we-do/supporting-museums/cultural-property/export-controls/export-licencing/> or by phoning ACE on +44 (0)20 7973 5188. The need for import licences varies from country to country and you should acquaint yourself with all relevant local requirements and provisions. The refusal of any import or export licence(s) or any delay in obtaining such licence(s) shall not permit the rescission of any *Sale* nor allow any delay in making full payment for the *Lot*. Generally, please contact our shipping department before the *Sale* if you require assistance in relation to export regulations.

13. CITES REGULATIONS

Please be aware that all *Lots* marked with the symbol Y are subject to CITES regulations when exporting these items outside the EU. These regulations may be found at <http://www.defra.gov.uk/ahvla-en/imports-exports/cites/> or may be requested from:

Animal Health and Veterinary Laboratories Agency (AHVLA)
Wildlife Licencing
Floor 1, Zone 17, Temple Quay House
2 The Square, Temple Quay
BRISTOL BS1 6EB
Tel: +44 (0) 117 372 8774

14. THE SELLERS AND/OR BONHAMS' LIABILITY

Other than any liability of the *Seller* to the *Buyer* of a *Lot* under the *Contract for Sale*, neither we nor the *Seller* are liable (whether in negligence or otherwise) for any error or misdescription or omission in any *Description* of a *Lot* or any *Estimate* in respect of it, whether contained in the *Catalogue* or otherwise, whether given orally or in writing and whether given before or during the *Sale*. Neither we nor the *Seller* will be liable for any loss of *Business*, profits, revenue or income, or for loss of reputation, or for disruption to *Business* or wasted time on the part of management or staff, or for indirect losses or consequential damages of any kind, irrespective in any case of the nature, volume or source of the loss or damage alleged to be suffered, and irrespective of whether the said loss or damage is caused by or claimed in respect of any negligence, other tort, breach of contract (if any) or statutory duty, restitutionary claim or otherwise. In any circumstances where we and/or the *Seller* are liable in relation to any *Lot* or

any *Description* or *Estimate* made of any *Lot*, or the conduct of any *Sale* in relation to any *Lot*, whether in damages, for an indemnity or contribution, or for a restitutionary remedy or otherwise, our and/or the *Seller's* liability (combined, if both we and the *Seller* are liable) will be limited to payment of a sum which will not exceed by way of maximum the amount of the *Purchase Price* of the *Lot* irrespective in any case of the nature, volume or source of any loss or damage alleged to be suffered or sum claimed as due, and irrespective of whether the liability arises from any negligence, other tort, breach of contract (if any) or statutory duty or otherwise. Nothing set out above will be construed as excluding or restricting (whether directly or indirectly) our liability or excluding or restricting any person's rights or remedies in respect of (i) fraud, or (ii) death or personal injury caused by our negligence (or by the negligence of any person under our control or for whom we are legally responsible), or (iii) acts or omissions for which we are liable under the Occupiers Liability Act 1957, or (iv) any other liability to the extent the same may not be excluded or restricted as a matter of law or (v) our undertakings under paragraphs 9 (in relation to specialist *Stamp* or *Book Sales* only) and 10 of the *Buyer's Agreement*. The same applies in respect of the *Seller*, as if references to us in this paragraph were substituted with references to the *Seller*.

15. BOOKS

As stated above, all *Lots* are sold on an "as is" basis, subject to all faults, imperfections and errors of *Description* save as set out below. However, you will be entitled to reject a *Book* in the circumstances set out in paragraph 11 of the *Buyers Agreement*. Please note that *Lots* comprising printed *Books*, unframed maps and bound manuscripts are not liable to VAT on the *Buyer's Premium*.

16. CLOCKS AND WATCHES

All *Lots* are sold "as is", and the absence of any reference to the condition of a clock or watch does not imply that the *Lot* is in good condition and without defects, repairs or restorations. Most clocks and watches have been repaired in the course of their normal lifetime and may now incorporate parts not original to them. Furthermore, *Bonhams* makes no representation or warranty that any clock or watch is in working order. As clocks and watches often contain fine and complex mechanisms, *Bidders* should be aware that a general service, change of battery or further repair work, for which the *Buyer* is solely responsible, may be necessary. *Bidders* should be aware that the importation of watches such as Rolex, Frank Muller and Corum into the United States is highly restricted. These watches may not be shipped to the USA and can only be imported personally.

17. FIREARMS – PROOF, CONDITION AND CERTIFICATION

Proof of Firearms

The term "proof exemption" indicates that a firearm has been examined at a Proof House, but not proved, as either (a) it was deemed of interest and not intended for use, or (b) ammunition was not available. In either case, the firearm must be regarded as unsafe to fire unless subsequently proved. Firearms proved for Black Powder should not be used with smokeless ammunition.

The term "Certificate of Unprovability" indicates that a firearm has been examined at a Proof House and is deemed both unsuitable for proof and use. Reproof is required before any such firearm is to be used.

Guns Sold as Parts

Barrels of guns sold as parts will only be made available for sleeving and measurements once rendered unserviceable according to the Gun Barrel Proof Act of 1968 to 1978 and the Rules of Proof.

Condition of Firearms

Comment in this *Catalogue* is restricted, in general, to exceptional condition and to those defects that might affect the immediate safety of a firearm in normal use. An intending *Bidder* unable to make technical examinations and assessments is recommended to seek advice from a gunmaker or from a

modern firearms specialist. All prospective *Bidders* are advised to consult the "° of bore and wall-thickness measurements posted in the saleroom and available from the department. *Bidders* should note that guns are stripped only where there is a strong indication of a mechanical malfunction. Stripping is not, otherwise, undertaken. Guns intended for use should be stripped and cleaned beforehand. Hammer guns should have their rebound mechanisms checked before use. The safety mechanisms of all guns must be tested before use. All measurements are approximate.

Original Gun Specifications Derived from Gunmakers

The Sporting Gun Department endeavours to confirm a gun's original specification and date of manufacture with makers who hold their original records.

Licensing Requirements Firearms Act 1968 as amended

Bonhams is constantly reviewing its procedures and would remind you that, in the case of firearms or shotguns subject to certification, to conform with current legislation, *Bonhams* is required to see, as appropriate, your original registered firearms dealer's certificate / shot gun certificate / firearm certificate / museum firearms licence / Section 5 authority or import licence (or details of any exemption from which you may benefit, for instance Crown servant status) for the firearm(s) you have purchased prior to taking full payment of the amount shown on your invoice. Should you not already be in possession of such an authority or exemption, you are required to initially pay a deposit of 95% of the total invoice with the balance of 5% payable on presentation of your valid certificate or licence showing your authority to hold the firearm(s) concerned.

Please be advised that if a successful *Bidder* is then unable to produce the correct paperwork, the *Lot(s)* will be reoffered by *Bonhams* in the next appropriate *Sale*, on standard terms for *Sellers*, and you will be responsible for any loss incurred by *Bonhams* on the original *Sale* to you.

In the case of RFD certificates and Section 5 authorities, we wish to keep an up-to-date copy on file. Please supply us with a Fax or photocopy. It would be helpful if you could send us an updated copy whenever your certificate or authority is renewed or changed.

Lots marked 'S1' and bearing red labels are Section 1 firearms and require a valid British Firearms certificate, RFD Licence or import licence.

Lots marked 'S2' and bearing blue labels are Section 2 firearms and require a valid British Shotgun certificate, RFD licence or import licence.

Lots marked 'S5' and bearing specially marked red labels are Section 5 prohibited firearms and require a valid Section 5 Authority or import licence.

Lots marked with a 'S58' and bearing yellow labels are for obsolete calibres and no licence is required unless ammunition is held.

Unmarked *Lots* require no licence.

Please do not hesitate to contact the Modern Sporting Gun Department should you have any queries.

Taxidermy and Related Items

As a *Seller* of these articles, *Bonhams* undertakes to comply fully with Cites and DEFRA regulations. *Buyers* are advised to inform themselves of all such regulations and should expect the exportation of items to take some time to arrange.

18. FURNITURE

Upholstered Furniture

Whilst we take every care in cataloguing furniture which has been upholstered we offer no *Guarantee* as to the originality of the wood covered by fabric or upholstery.

19. JEWELLERY

~ Ruby and Jadeite

Ruby and jadeite gemstones of Burmese (Myanmar) origin may not be imported into the US. Rubies and jadeite of non-Burmese origin require certification before import into the US and it is the *Buyer's* responsibility to obtain all relevant and required export/import licences, certificates and documentation before shipping. Failure by the *Buyer* to successfully import goods into the US does not constitute grounds for non payment or cancellation of *Sale*. *Bonhams* will not be responsible for any additional costs in this regard howsoever incurred.

Gemstones

Historically many gemstones have been subjected to a variety of treatments to enhance their appearance. Sapphires and rubies are routinely heat treated to improve their colour and clarity, similarly emeralds are frequently treated with oils or resin for the same purpose. Other treatments such as staining, irradiation or coating may have been used on other gemstones. These treatments may be permanent, whilst others may need special care or re-treatment over the years to retain their appearance. *Bidders* should be aware that *Estimates* assume that gemstones may have been subjected to such treatments. A number of laboratories issue certificates that give more detailed *Descriptions* of gemstones. However there may not be consensus between different laboratories on the degrees, or types of treatment for any particular gemstone. In the event that *Bonhams* has been given or has obtained certificates for any *Lot* in the *Sale* these certificates will be disclosed in the *Catalogue*. Although, as a matter of policy, *Bonhams* endeavours to provide certificates from recognised laboratories for certain gemstones, it is not feasible to obtain certificates for each *Lot*. In the event that no certificate is published in the *Catalogue*, *Bidders* should assume that the gemstones may have been treated. Neither *Bonhams* nor the *Seller* accepts any liability for contradictions or differing certificates obtained by *Buyers* on any *Lots* subsequent to the *Sale*.

Estimated Weights

If a stone(s) weight appears within the body of the *Description* in capital letters, the stone(s) has been unmounted and weighed by *Bonhams*. If the weight of the stone(s) is stated to be approximate and does not appear in capital letters, the stone(s) has been assessed by us within its/the settings, and the stated weight is a statement of our opinion only. This information is given as a guide and *Bidders* should satisfy themselves with regard to this information as to its accuracy.

Signatures

1. A diamond brooch, by Kutchinsky

When the maker's name appears in the title, in *Bonhams'* opinion the piece is by that maker.

2. A diamond brooch, signed Kutchinsky

Has a signature that, in *Bonhams'* opinion, is authentic but may contain gemstones that are not original, or the piece may have been altered.

3. A diamond brooch, mounted by Kutchinsky

Has been created by the jeweller, in *Bonhams'* opinion, but using stones or designs supplied by the client.

20. PHOTOGRAPHS

Explanation of Catalogue Terms

- "Bill Brandt": in our opinion a work by the artist.
- "Attributed to Bill Brandt": in our opinion probably a work by the artist, but less certainty to authorship is expressed than in the preceding category.
- "Signed and/or titled and/or dated and/or inscribed": in our opinion the signature and/or title and/or date and/or inscription are in the artist's hand.
- "Signed and/or titled and/or dated and/or inscribed in another hand": in our opinion the signature and/or title and/or date and/or inscription have been added by another hand.

- The date given is that of the image (negative). Where no further date is given, this indicates that the photographic print is vintage (the term "vintage" may also be included in the *Lot Description*). A vintage photograph is one which was made within approximately 5-10 years of the negative. Where a second, later date appears, this refers to the date of printing. Where the exact printing date is not known, but understood to be later, "printed later" will appear in the *Lot Description*.
- Unless otherwise specified, dimensions given are those of the piece of paper on which the image is printed, including any margins. Some photographs may appear in the *Catalogue* without margins illustrated.
- All photographs are sold unframed unless stated in the *Lot Description*.

21. PICTURES

Explanation of Catalogue Terms

The following terms used in the *Catalogue* have the following meanings but are subject to the general provisions relating to *Descriptions* contained in the *Contract for Sale*:

- "Jacopo Bassano": in our opinion a work by the artist. When the artist's forename(s) is not known, a series of asterisks, followed by the surname of the artist, whether preceded by an initial or not, indicates that in our opinion the work is by the artist named;
- "Attributed to Jacopo Bassano": in our opinion probably a work by the artist but less certainty as to authorship is expressed than in the preceding category;
- "Studio/Workshop of Jacopo Bassano": in our opinion a work by an unknown hand in a studio of the artist which may or may not have been executed under the artist's direction;
- "Circle of Jacopo Bassano": in our opinion a work by a hand closely associated with a named artist but not necessarily his pupil;
- "Follower of Jacopo Bassano": in our opinion a work by a painter working in the artist's style, contemporary or nearly contemporary, but not necessarily his pupil;
- "Manner of Jacopo Bassano": in our opinion a work in the style of the artist and of a later date;
- "After Jacopo Bassano": in our opinion, a copy of a known work of the artist;
- "Signed and/or dated and/or inscribed": in our opinion the signature and/or date and/or inscription are from the hand of the artist;
- "Bears a signature and/or date and/or inscription": in our opinion the signature and/or date and/or inscription have been added by another hand.

22. PORCELAIN AND GLASS

Damage and Restoration

For your guidance, in our *Catalogues* we detail, as far as practicable, recorded all significant defects, cracks and restoration. Such practicable *Descriptions* of damage cannot be definitive, and in providing *Condition Reports*, we cannot *Guarantee* that there are no other defects present which have not been mentioned. *Bidders* should satisfy themselves by inspection, as to the condition of each *Lot*. Please see the *Contract for Sale* printed in this *Catalogue*. Because of the difficulty in determining whether an item of glass has been repolished, in our *Catalogues* reference is only made to visible chips and cracks. No mention is made of repolishing, severe or otherwise.

23. VEHICLES

The Veteran Car Club of Great Britain

Dating Plates and Certificates

When mention is made of a Veteran Car Club Dating Plate or Dating Certificate in this *Catalogue*, it should be borne in mind that the Veteran Car Club of Great Britain using the services of Veteran Car Company Ltd, does from time to time, review cars already dated and, in some instances, where fresh evidence becomes available, the review can result in an alteration of date. Whilst the Club and Veteran Car Company Ltd make every effort to ensure accuracy, the date shown on the Dating Plate or Dating Certificate cannot be guaranteed as correct and intending purchasers should make their own enquiries as to the date of the car.

24. WINE

Lots which are lying under Bond and those liable to VAT may not be available for immediate collection.

Examining the wines

It is occasionally possible to provide a pre-*Sale* tasting for larger parcels (as defined below). This is generally limited to more recent and everyday drinking wines. Please contact the department for details.

It is not our policy to inspect every unopened case. In the case of wines older than 20 years the boxes will usually have been opened and levels and appearance noted in the *Catalogue* where necessary. You should make proper allowance for variations in ullage levels and conditions of corks, capsules and labels.

Corks and Ullages

Ullage refers to the space between the base of the cork and the wine. Ullage levels for Bordeaux shaped bottles are only normally noted when below the neck and for Burgundy, Alsace, German and Cognac shaped bottles when greater than 4 centimetres (cm). Acceptable ullage levels increase with age; generally acceptable levels are as follows:

Under 15 years old – into neck or less than 4cm
15 to 30 years old – top shoulder (ts) or up to 5cm
Over 30 years old – high shoulder (hs) or up to 6cm

It should be noted that ullages may change between publication of the *Catalogue* and the *Sale* and that corks may fail as a result of transporting the wine. We will only accept responsibility for *Descriptions* of condition at the time of publication of the *Catalogue* and cannot accept responsibility for any loss resulting from failure of corks either before or after this point.

Options to buy parcels

A parcel is a number of *Lots* of identical size of the same wine, bottle size and *Description*. The *Buyer* of any of these *Lots* has the option to accept some or all of the remaining *Lots* in the parcel at the same price, although such options will be at the *Auctioneer's* sole discretion. Absentee *Bidders* are, therefore, advised to bid on the first *Lot* in a parcel.

Wines in Bond

Wines lying in Bond are marked Δ and VAT is payable by the purchaser, at the standard rate, on the *Hammer Price*, unless the wines are to remain under Bond. *Buyers* requiring their wine to remain in Bond must notify *Bonhams* at the time of the *Sale*. The *Buyer* is then himself responsible for all duty, clearance VAT and other charges that may be payable thereon. All such *Lots* must be transferred or collected within two weeks of the *Sale*.

Buyers outside the UK must be aware that any forwarding agent appointed to export their purchases must have a movement certificate for *Lots* to be released under Bond.

Bottling Details and Case Terms

The following terms used in the *Catalogue* have the following meanings:

CB – Château bottled
DB – Domaine bottled
EstB – Estate bottled
BB – Bordeaux bottled
BE – Belgian bottled
FB – French bottled
GB – German bottled
OB – Oporto bottled
UK – United Kingdom bottled
owc – original wooden case
iwc – individual wooden case
oc – original carton

SYMBOLS

THE FOLLOWING SYMBOLS ARE USED TO DENOTE

- Y Subject to CITES regulations when exporting these items outside the EU, see clause 13.
- W Objects displayed with a w will be located in the Bonhams Warehouse and will only be available for collection from this location.
- ≈ Please note that as a result of recent legislation ruby and jadeite gem stones of Burmese (Myanmar) origin may not be imported into the US. Rubies and jadeite of non-Burmese origin require certification before import into the US.
- Δ Wines lying in Bond.
- AR An *Additional Premium* will be payable to us by the *Buyer* to cover our *Expenses* relating to payment of royalties under the Artists Resale Right Regulations 2006. See clause 7 for details.
- The *Seller* has been guaranteed a minimum price for the *Lot*, either by *Bonhams* or a third party. This may take the form of an irrevocable bid by a third party, who may make a financial gain on a successful *Sale* or a financial loss if unsuccessful.
- ▲ *Bonhams* owns the *Lot* either wholly or partially or may otherwise have an economic interest.
- Ⓞ This lot contains or is made of ivory. The United States Government has banned the import of ivory into the USA.
- , †, *, G, Ω, α see clause 8, VAT, for details.

DATA PROTECTION – USE OF YOUR INFORMATION

Where we obtain any personal information about you, we shall only use it in accordance with the terms of our Privacy Policy (subject to any additional specific consent(s) you may have given at the time your information was disclosed). A copy of our Privacy Policy can be found on our *Website* www.bonhams.com or requested by post from Customer Services Department, 101 New Bond Street, London, W1S 1SR or by email from info@bonhams.com

APPENDIX 1

CONTRACT FOR SALE

IMPORTANT: These terms may be changed in advance of the *Sale* of the *Lot* to you, by the setting out of different terms in the *Catalogue* for the *Sale* and/or by placing an insert in the *Catalogue* and/or by notices at the *Sale* venue and/or by oral announcements before and during the *Sale* at the *Sale* venue. You should be alert to this possibility of changes and ask in advance of bidding if there have been any.

Under this contract the *Seller's* liability in respect of the quality of the *Lot*, its fitness for any purpose and its conformity with any *Description* is limited. You are strongly advised to examine the *Lot* for yourself and/or obtain an independent examination of it before you buy it.

1 THE CONTRACT

- 1.1 These terms govern the *Contract for Sale* of the *Lot* by the *Seller* to the *Buyer*.
- 1.2 The Definitions and Glossary contained in Appendix 3 in the *Catalogue* are incorporated into this *Contract for Sale* and a separate copy can also be provided by *Bonhams* on request. Where words and phrases are used which are in the List of Definitions, they are printed in italics.
- 1.3 The *Seller* sells the *Lot* as the principal to the *Contract for Sale*, such contract being made between the *Seller* and you through *Bonhams* which acts in the sole capacity as the *Seller's* agent and not as an additional principal. However, if the *Catalogue* states that *Bonhams* sells the *Lot* as principal, or such a statement is made by an announcement by the *Auctioneer*, or by a notice at the *Sale*, or an insert in the *Catalogue*, then *Bonhams* is the *Seller* for the purposes of this agreement.
- 1.4 The contract is made on the fall of the *Auctioneer's* hammer in respect of the *Lot* when it is knocked down to you.

2 SELLER'S UNDERTAKINGS

- 2.1 The *Seller* undertakes to you that:
- 2.1.1 the *Seller* is the owner of the *Lot* or is duly authorised to sell the *Lot* by the owner;
- 2.1.2 save as disclosed in the *Entry* for the *Lot* in the *Catalogue*, the *Seller* sells the *Lot* with full title guarantee or, where the *Seller* is an executor, trustee, liquidator, receiver or administrator, with whatever right, title or interest he may have in the *Lot*;
- 2.1.3 except where the *Sale* is by an executor, trustee, liquidator, receiver or administrator the *Seller* is both legally entitled to sell the *Lot*, and legally capable of conferring on you quiet possession of the *Lot* and that the *Sale* conforms in every respect with the terms implied by the Sale of Goods Act 1979, Sections 12(1) and 12(2) (see the Definitions and Glossary);
- 2.1.4 the *Seller* has complied with all requirements, legal or otherwise, relating to any export or import of the *Lot*, and all duties and taxes in respect of the export or import of the *Lot* have (unless stated to the contrary in the *Catalogue* or announced by the *Auctioneer*) been paid and, so far as the *Seller* is aware, all third parties have complied with such requirements in the past;
- 2.1.5 subject to any alterations expressly identified as such made by announcement or notice at the *Sale* venue or by the *Notice to Bidders* or by an insert in the *Catalogue*, the *Lot* corresponds with the *Contractual Description* of the *Lot*, being that part of the *Entry* about the *Lot* in the *Catalogue* which is in bold letters and (except for colour) with any photograph of the *Lot* in the *Catalogue* and the contents of any *Condition Report* which has been provided to the *Buyer*.

3 DESCRIPTIONS OF THE LOT

- 3.1 Paragraph 2.1.5 sets out what is the *Contractual Description* of the *Lot*. In particular, the *Lot* is not sold as corresponding with that part of the *Entry* in the *Catalogue* which is not printed in bold letters, which merely sets out (on the *Seller's* behalf) *Bonhams'* opinion about the *Lot* and which is not part of the *Contractual Description* upon which the *Lot* is sold. Any statement or representation other than that part of the *Entry* referred to in paragraph 2.1.5 (together with any express alteration to it as referred to in paragraph 2.1.5), including any *Description* or *Estimate*, whether made orally or in writing, including in the *Catalogue* or on *Bonhams' Website*, or by conduct, or otherwise, and whether by or on behalf of the *Seller* or *Bonhams* and whether made prior to or during the *Sale*, is not part of the *Contractual Description* upon which the *Lot* is sold.
- 3.2 Except as provided in paragraph 2.1.5, the *Seller* does not make or give and does not agree to make or give any contractual promise, undertaking, obligation, guarantee, warranty, or representation of fact, or undertake any duty of care, in relation to any *Description* of the *Lot* or any *Estimate* in relation to it, nor of the accuracy or completeness of any *Description* or *Estimate* which may have been made by or on behalf of the *Seller* including by *Bonhams*. No such *Description* or *Estimate* is incorporated into this *Contract for Sale*.

4 FITNESS FOR PURPOSE AND SATISFACTORY QUALITY

- 4.1 The *Seller* does not make and does not agree to make any contractual promise, undertaking, obligation, guarantee, warranty, or representation of fact in relation to the satisfactory quality of the *Lot* or its fitness for any purpose.

- 4.2 The *Seller* will not be liable for any breach of any undertaking, whether implied by the Sale of Goods Act 1979 or otherwise, as to the satisfactory quality of the *Lot* or its fitness for any purpose.

5 RISK, PROPERTY AND TITLE

- 5.1 Risk in the *Lot* passes to you when it is knocked down to you on the fall of the *Auctioneer's* hammer in respect of the *Lot*. The *Seller* will not be responsible thereafter for the *Lot* prior to you collecting it from *Bonhams* or the *Storage Contractor*, with whom you have separate contract(s) as *Buyer*. You will indemnify the *Seller* and keep the *Seller* fully indemnified from and against all claims, proceedings, costs, expenses and losses arising in respect of any injury, loss and damage caused to the *Lot* after the fall of the *Auctioneer's* hammer until you obtain full title to it.
- 5.2 Title to the *Lot* remains in and is retained by the *Seller* until the *Purchase Price* and all other sums payable by you to *Bonhams* in relation to the *Lot* have been paid in full to, and received in cleared funds by, *Bonhams*.

6 PAYMENT

- 6.1 Your obligation to pay the *Purchase Price* arises when the *Lot* is knocked down to you on the fall of the *Auctioneer's* hammer in respect of the *Lot*.
- 6.2 Time will be of the essence in relation to payment of the *Purchase Price* and all other sums payable by you to *Bonhams*. Unless agreed in writing with you by *Bonhams* on the *Seller's* behalf (in which case you must comply with the terms of that agreement), all such sums must be paid to *Bonhams* by you in the currency in which the *Sale* was conducted by not later than 4.30pm on the second working day following the *Sale* and you must ensure that the funds are cleared by the seventh working day after the *Sale*. Payment must be made to *Bonhams* by one of the methods stated in the *Notice to Bidders* unless otherwise agreed with you in writing by *Bonhams*. If you do not pay any sums due in accordance with this paragraph, the *Seller* will have the rights set out in paragraph 8 below.

7 COLLECTION OF THE LOT

- 7.1 Unless otherwise agreed in writing with you by *Bonhams*, the *Lot* will be released to you or to your order only when *Bonhams* has received cleared funds to the amount of the full *Purchase Price* and all other sums owed by you to the *Seller* and to *Bonhams*.
- 7.2 The *Seller* is entitled to withhold possession from you of any other *Lot* he has sold to you at the same or at any other *Sale* and whether currently in *Bonhams'* possession or not until payment in full and in cleared funds of the *Purchase Price* and all other sums due to the *Seller* and/or *Bonhams* in respect of the *Lot*.
- 7.3 You will collect and remove the *Lot* at your own expense from *Bonhams'* custody and/or control or from the *Storage Contractor's* custody in accordance with *Bonhams'* instructions or requirements.
- 7.4 You will be wholly responsible for packing, handling and transport of the *Lot* on collection and for complying with all import or export regulations in connection with the *Lot*.
- 7.5 You will be wholly responsible for any removal, storage or other charges or *Expenses* incurred by the *Seller* if you do not remove the *Lot* in accordance with this paragraph 7 and will indemnify the *Seller* against all charges, costs, including any legal costs and fees, *Expenses* and losses suffered by the *Seller* by reason of your failure to remove the *Lot* including any charges due under any *Storage Contract*. All such sums due to the *Seller* will be payable on demand.

8	FAILURE TO PAY FOR THE LOT	9	THE SELLER'S LIABILITY	10.3	If either party to the <i>Contract for Sale</i> is prevented from performing that party's respective obligations under the <i>Contract for Sale</i> by circumstances beyond its reasonable control or if performance of its obligations would be by reason of such circumstances give rise to a significantly increased financial cost to it, that party will not, for so long as such circumstances prevail, be required to perform such obligations. This paragraph does not apply to the obligations imposed on you by paragraph 6.
8.1	If the <i>Purchase Price</i> for a <i>Lot</i> is not paid to <i>Bonhams</i> in full in accordance with the <i>Contract for Sale</i> the <i>Seller</i> will be entitled, with the prior written agreement of <i>Bonhams</i> but without further notice to you, to exercise one or more of the following rights (whether through <i>Bonhams</i> or otherwise):	9.1	The <i>Seller</i> will not be liable for any injury, loss or damage caused by the <i>Lot</i> after the fall of the <i>Auctioneer's</i> hammer in respect of the <i>Lot</i> .	10.4	Any notice or other communication to be given under the <i>Contract for Sale</i> must be in writing and may be delivered by hand or sent by first class post or air mail or fax transmission, if to the <i>Seller</i> , addressed c/o <i>Bonhams</i> at its address or fax number in the <i>Catalogue</i> (marked for the attention of the Company Secretary), and if to you to the address or fax number of the <i>Buyer</i> given in the <i>Bidding Form</i> (unless notice of any change of address is given in writing). It is the responsibility of the sender of the notice or communication to ensure that it is received in a legible form within any applicable time period.
8.1.1	to terminate immediately the <i>Contract for Sale</i> of the <i>Lot</i> for your breach of contract;	9.2	Subject to paragraph 9.3 below, except for breach of the express undertaking provided in paragraph 2.1.5, the <i>Seller</i> will not be liable for any breach of any term that the <i>Lot</i> will correspond with any <i>Description</i> applied to it by or on behalf of the <i>Seller</i> , whether implied by the Sale of Goods Act 1979 or otherwise.	10.5	If any term or any part of any term of the <i>Contract for Sale</i> is held to be unenforceable or invalid, such unenforceability or invalidity will not affect the enforceability and validity of the remaining terms or the remainder of the relevant term.
8.1.2	to resell the <i>Lot</i> by auction, private treaty or any other means on giving seven days' written notice to you of the intention to resell;	9.3	Unless the <i>Seller</i> sells the <i>Lot</i> in the course of a <i>Business</i> and the <i>Buyer</i> buys it as a <i>Consumer</i> ,	10.6	References in the <i>Contract for Sale</i> to <i>Bonhams</i> will, where appropriate, include reference to <i>Bonhams'</i> officers, employees and agents.
8.1.3	to retain possession of the <i>Lot</i> ;	9.3.1	the <i>Seller</i> will not be liable (whether in negligence, other tort, breach of contract or statutory duty or in restitution or under the Misrepresentation Act 1967, or in any other way) for any lack of conformity with, or inaccuracy, error, misdescription or omission in any <i>Description</i> of the <i>Lot</i> or any <i>Entry</i> or <i>Estimate</i> in relation to the <i>Lot</i> made by or on behalf of the <i>Seller</i> (whether made in writing, including in the <i>Catalogue</i> , or on the <i>Website</i> , or orally, or by conduct or otherwise) and whether made before or after this agreement or prior to or during the <i>Sale</i> ;	10.7	The headings used in the <i>Contract for Sale</i> are for convenience only and will not affect its interpretation.
8.1.4	to remove and store the <i>Lot</i> at your expense;	9.3.2	the <i>Seller</i> will not be liable for any loss of <i>Business</i> , <i>Business</i> profits or revenue or income or for loss of reputation or for disruption to <i>Business</i> or wasted time on the part of the <i>Buyer</i> or of the <i>Buyer's</i> management or staff or, for any indirect losses or consequential damages of any kind, irrespective in any case of the nature, volume or source of the loss or damage alleged to be suffered, and irrespective of whether the said loss or damage is caused by or claimed in respect of any negligence, other tort, breach of contract, statutory duty, restitutionary claim or otherwise;	10.8	In the <i>Contract for Sale</i> "including" means "including, without limitation".
8.1.5	to take legal proceedings against you for any sum due under the <i>Contract for Sale</i> and/or damages for breach of contract;	9.3.3	in any circumstances where the <i>Seller</i> is liable to you in respect of the <i>Lot</i> , or any act, omission, statement, or representation in respect of it, or this agreement or its performance, and whether in damages, for an indemnity or contribution or for a restitutionary remedy or in any way whatsoever, the <i>Seller's</i> liability will be limited to payment of a sum which will not exceed by way of maximum the amount of the <i>Purchase Price</i> of the <i>Lot</i> irrespective in any case of the nature, volume or source of any loss or damage alleged to be suffered or sum claimed as due, and irrespective of whether the liability arises from any negligence, other tort, breach of contract, statutory duty, bailee's duty, restitutionary claim or otherwise.	10.9	References to the singular will include reference to the plural (and vice versa) and reference to any one gender will include reference to the other genders.
8.1.6	to be paid interest on any monies due (after as well as before judgement or order) at the annual rate of 5% per annum above the base rate of National Westminster Bank Plc from time to time to be calculated on a daily basis from the date upon which such monies become payable until the date of actual payment;	9.4	Nothing set out in paragraphs 9.1 to 9.3 above will be construed as excluding or restricting (whether directly or indirectly) any person's liability or excluding or restricting any person's rights or remedies in respect of (i) fraud, or (ii) death or personal injury caused by the <i>Seller's</i> negligence (or any person under the <i>Seller's</i> control or for whom the <i>Seller</i> is legally responsible), or (iii) acts or omissions for which the <i>Seller</i> is liable under the Occupiers Liability Act 1957, or (iv) any other liability to the extent the same may not be excluded or restricted as a matter of law.	10.10	Reference to a numbered paragraph is to a paragraph of the <i>Contract for Sale</i> .
8.1.7	to repossess the <i>Lot</i> (or any part thereof) which has not become your property, and for this purpose (unless the <i>Buyer</i> buys the <i>Lot</i> as a <i>Consumer</i> from the <i>Seller</i> selling in the course of a <i>Business</i>) you hereby grant an irrevocable licence to the <i>Seller</i> by himself and to his servants or agents to enter upon all or any of your premises (with or without vehicles) during normal <i>Business</i> hours to take possession of the <i>Lot</i> or part thereof;	10	MISCELLANEOUS	10.11	Save as expressly provided in paragraph 10.12 nothing in the <i>Contract for Sale</i> confers (or purports to confer) on any person who is not a party to the <i>Contract for Sale</i> any benefit conferred by, or the right to enforce any term of, the <i>Contract for Sale</i> .
8.1.8	to retain possession of any other property sold to you by the <i>Seller</i> at the <i>Sale</i> or any other auction or by private treaty until all sums due under the <i>Contract for Sale</i> shall have been paid in full in cleared funds;	11	GOVERNING LAW	10.12	Where the <i>Contract for Sale</i> confers an immunity from, and/or an exclusion or restriction of, the responsibility and/or liability of the <i>Seller</i> , it will also operate in favour and for the benefit of <i>Bonhams</i> , <i>Bonhams'</i> holding company and the subsidiaries of such holding company and the successors and assigns of <i>Bonhams</i> and of such companies and of any officer, employee and agent of <i>Bonhams</i> and such companies, each of whom will be entitled to rely on the relevant immunity and/or exclusion and/or restriction within and for the purposes of Contracts (Rights of Third Parties) Act 1999, which enables the benefit of a contract to be extended to a person who is not a party to the contract, and generally at law.
8.1.9	to retain possession of, and on three months' written notice to sell, <i>Without Reserve</i> , any of your other property in the possession of the <i>Seller</i> and/or of <i>Bonhams</i> (as bailee for the <i>Seller</i>) for any purpose (including, without limitation, other goods sold to you) and to apply any monies due to you as a result of such <i>Sale</i> in satisfaction or part satisfaction of any amounts owed to the <i>Seller</i> or to <i>Bonhams</i> ; and	10.1	You may not assign either the benefit or burden of the <i>Contract for Sale</i> .	10.1	All transactions to which the <i>Contract for Sale</i> applies and all connected matters will be governed by and construed in accordance with the laws of that part of the United Kingdom where the <i>Sale</i> takes place and the <i>Seller</i> and you each submit to the exclusive jurisdiction of the courts of that part of the United Kingdom, save that the <i>Seller</i> may bring proceedings against you in any other court of competent jurisdiction to the extent permitted by the laws of the relevant jurisdiction. <i>Bonhams</i> has a complaints procedure in place.
8.1.10	so long as such goods remain in the possession of the <i>Seller</i> or <i>Bonhams</i> as its bailee, to rescind the contract for the <i>Sale</i> of any other goods sold to you by the <i>Seller</i> at the <i>Sale</i> or at any other auction or by private treaty and apply any monies received from you in respect of such goods in part or full satisfaction of any amounts owed to the <i>Seller</i> or to <i>Bonhams</i> by you.	10.2	The <i>Seller's</i> failure or delay in enforcing or exercising any power or right under the <i>Contract for Sale</i> will not operate or be deemed to operate as a waiver of his rights under it except to the extent of any express waiver given to you in writing. Any such waiver will not affect the <i>Seller's</i> ability subsequently to enforce any right arising under the <i>Contract for Sale</i> .		
8.2	You agree to indemnify the <i>Seller</i> against all legal and other costs of enforcement, all losses and other <i>Expenses</i> and costs (including any monies payable to <i>Bonhams</i> in order to obtain the release of the <i>Lot</i>) incurred by the <i>Seller</i> (whether or not court proceedings will have been issued) as a result of <i>Bonhams</i> taking steps under this paragraph 8 on a full indemnity basis together with interest thereon (after as well as before judgement or order) at the rate specified in paragraph 8.1.6 from the date upon which the <i>Seller</i> becomes liable to pay the same until payment by you.				
8.3	On any resale of the <i>Lot</i> under paragraph 8.1.2, the <i>Seller</i> will account to you in respect of any balance remaining from any monies received by him or on his behalf in respect of the <i>Lot</i> , after the payment of all sums due to the <i>Seller</i> and to <i>Bonhams</i> , within 28 days of receipt of such monies by him or on his behalf.				

APPENDIX 2

BUYER'S AGREEMENT

IMPORTANT: These terms may be changed in advance of the Sale of the Lot to you, by the setting out of different terms in the Catalogue for the Sale and/or by placing an insert in the Catalogue and/or by notices at the Sale venue and/or by oral announcements before and during the Sale at the Sale venue. You should be alert to this possibility of changes and ask in advance of bidding if there have been any.

1 THE CONTRACT

- 1.1 These terms govern the contract between Bonhams personally and the Buyer, being the person to whom a Lot has been knocked down by the Auctioneer.
- 1.2 The Definitions and Glossary contained in Appendix 3 to the Catalogue for the Sale are incorporated into this agreement and a separate copy can also be provided by us on request. Where words and phrases which are defined in the List of Definitions are used in this agreement, they are printed in italics. Reference is made in this agreement to information printed in the Notice to Bidders, printed in the Catalogue for the Sale, and where such information is referred to it is incorporated into this agreement.
- 1.3 Except as specified in paragraph 4 of the Notice to Bidders the Contract for Sale of the Lot between you and the Seller is made on the fall of the Auctioneer's hammer in respect of the Lot, when it is knocked down to you. At that moment a separate contract is also made between you and Bonhams on the terms in this Buyer's Agreement.
- 1.4 We act as agents for the Seller and are not answerable or personally responsible to you for any breach of contract or other default by the Seller, unless Bonhams sells the Lot as principal.
- 1.5 Our personal obligations to you are governed by this agreement and we agree, subject to the terms below, to the following obligations:
 - 1.5.1 we will, until the date and time specified in the Notice to Bidders or otherwise notified to you, store the Lot in accordance with paragraph 5;
 - 1.5.2 subject to any power of the Seller or us to refuse to release the Lot to you, we will release the Lot to you in accordance with paragraph 4 once you have paid to us, in cleared funds, everything due to us and the Seller;
 - 1.5.3 we will provide guarantees in the terms set out in paragraphs 9 and 10.
- 1.6 We do not make or give and do not agree to make or give any contractual promise, undertaking, obligation, Guarantee, warranty, representation of fact in relation to any Description of the Lot or any Estimate in relation to it, nor of the accuracy or completeness of any Description or Estimate which may have been made by us or on our behalf or by or on behalf of the Seller (whether made orally or in writing, including in the Catalogue or on Bonhams' Website, or by conduct, or otherwise), and whether made before or after this agreement or prior to or during the Sale. No such Description or Estimate is incorporated into this agreement between you and us. Any such Description or Estimate, if made by us or on our behalf, was (unless Bonhams itself sells the Lot as principal) made as agent on behalf of the Seller.

2 PERFORMANCE OF THE CONTRACT FOR SALE

You undertake to us personally that you will observe and comply with all your obligations and undertakings to the Seller under the Contract for Sale in respect of the Lot.

3 PAYMENT

- 3.1 Unless agreed in writing between you and us or as otherwise set out in the Notice to Bidders, you must pay to us by not later than 4.30pm on the second working day following the Sale:
 - 3.1.1 the Purchase Price for the Lot;
 - 3.1.2 a Buyer's Premium in accordance with the rates set out in the Notice to Bidders, and
 - 3.1.3 if the Lot is marked [AR], an Additional Premium which is calculated and payable in accordance with the Notice to Bidders together with VAT on that sum if applicable so that all sums due to us are cleared funds by the seventh working day after the Sale.
- 3.2 You must also pay us on demand any Expenses payable pursuant to this agreement.
- 3.3 All payments to us must be made in the currency in which the Sale was conducted, using, unless otherwise agreed by us in writing, one of the methods of payment set out in the Notice to Bidders. Our invoices will only be addressed to the registered Bidder unless the Bidder is acting as an agent for a named principal and we have approved that arrangement, in which case we will address the invoice to the principal.
- 3.4 Unless otherwise stated in this agreement all sums payable to us will be subject to VAT at the appropriate rate and VAT will be payable by you on all such sums.
- 3.5 We may deduct and retain for our own benefit from the monies paid by you to us the Buyer's Premium, the Commission payable by the Seller in respect of the Lot, any Expenses and VAT and any interest earned and/or incurred until payment to the Seller.
- 3.6 Time will be of the essence in relation to any payment payable to us. If you do not pay the Purchase Price, or any other sum due to us in accordance with this paragraph 3, we will have the rights set out in paragraph 7 below.
- 3.7 Where a number of Lots have been knocked down to you, any monies we receive from you will be applied firstly pro-rata to pay the Purchase Price of each Lot and secondly pro-rata to pay all amounts due to Bonhams.

4 COLLECTION OF THE LOT

- 4.1 Subject to any power of the Seller or us to refuse to release the Lot to you, once you have paid to us, in cleared funds, everything due to the Seller and to us, we will release the Lot to you or as you may direct us in writing. The Lot will only be released on production of a buyer collection document, obtained from our cashier's office.
- 4.2 You must collect and remove the Lot at your own expense by the date and time specified in the Notice to Bidders, or if no date is specified, by 4.30pm on the seventh day after the Sale.
- 4.3 For the period referred to in paragraph 4.2, the Lot can be collected from the address referred to in the Notice to Bidders for collection on the days and times specified in the Notice to Bidders. Thereafter, the Lot may be removed elsewhere for storage and you must enquire from us as to when and where you can collect it, although this information will usually be set out in the Notice to Bidders.

- 4.4 If you have not collected the Lot by the date specified in the Notice to Bidders, you authorise us, acting as your agent and on your behalf, to enter into a contract (the "Storage Contract") with the Storage Contractor for the storage of the Lot on the then current standard terms and conditions agreed between Bonhams and the Storage Contractor (copies of which are available on request). If the Lot is stored at our premises storage fees at our current daily rates (currently a minimum of £3 plus VAT per Lot per day) will be payable from the expiry of the period referred to in paragraph 4.2. These storage fees form part of our Expenses.
- 4.5 Until you have paid the Purchase Price and any Expenses in full the Lot will either be held by us as agent on behalf of the Seller or held by the Storage Contractor as agent on behalf of the Seller and ourselves on the terms contained in the Storage Contract.
- 4.6 You undertake to comply with the terms of any Storage Contract and in particular to pay the charges (and all costs of moving the Lot into storage) due under any Storage Contract. You acknowledge and agree that you will not be able to collect the Lot from the Storage Contractor's premises until you have paid the Purchase Price, any Expenses and all charges due under the Storage Contract.
- 4.7 You will be wholly responsible for packing, handling and transport of the Lot on collection and for complying with all import or export regulations in connection with the Lot.
- 4.8 You will be wholly responsible for any removal, storage, or other charges for any Lot not removed in accordance with paragraph 4.2, payable at our current rates, and any Expenses we incur (including any charges due under the Storage Contract), all of which must be paid by you on demand and in any event before any collection of the Lot by you or on your behalf.

5 STORING THE LOT

We agree to store the Lot until the earlier of your removal of the Lot or until the time and date set out in the Notice to Bidders, on the Sale Information Page or at the back of the catalogue (or if no date is specified, by 4.30pm on the seventh day after the Sale) and, subject to paragraphs 6 and 10, to be responsible as bailee to you for damage to or the loss or destruction of the Lot (notwithstanding that it is not your property before payment of the Purchase Price). If you do not collect the Lot before the time and date set out in the Notice to Bidders (or if no date is specified, by 4.30pm on the seventh day after the Sale) we may remove the Lot to another location, the details of which will usually be set out in the relevant section of the Catalogue. If you have not paid for the Lot in accordance with paragraph 3, and the Lot is moved to any third party's premises, the Lot will be held by such third party strictly to Bonhams' order and we will retain our lien over the Lot until we have been paid in full in accordance with paragraph 3.

6 RESPONSIBILITY FOR THE LOT

- 6.1 Only on the payment of the Purchase Price to us will title in the Lot pass to you. However under the Contract for Sale, the risk in the Lot passed to you when it was knocked down to you.
- 6.2 You are advised to obtain insurance in respect of the Lot as soon as possible after the Sale.

7 FAILURE TO PAY OR TO REMOVE THE LOT AND PART PAYMENTS	7.3 If you pay us only part of the sums due to us such payment shall be applied firstly to the <i>Purchase Price</i> of the <i>Lot</i> (or where you have purchased more than one <i>Lot</i> pro-rata towards the <i>Purchase Price</i> of each <i>Lot</i>) and secondly to the <i>Buyer's Premium</i> (or where you have purchased more than one <i>Lot</i> pro-rata to the <i>Buyer's Premium</i> on each <i>Lot</i>) and thirdly to any other sums due to us.	9.3 Paragraph 9 will not apply in respect of a <i>Forgery</i> if:
7.1 If all sums payable to us are not so paid in full at the time they are due and/or the <i>Lot</i> is not removed in accordance with this agreement, we will without further notice to you be entitled to exercise one or more of the following rights (without prejudice to any rights we may exercise on behalf of the <i>Seller</i>):	7.4 We will account to you in respect of any balance we hold remaining from any monies received by us in respect of any <i>Sale</i> of the <i>Lot</i> under our rights under this paragraph 7 after the payment of all sums due to us and/or the <i>Seller</i> within 28 days of receipt by us of all such sums paid to us.	9.3.1 the <i>Entry</i> in relation to the <i>Lot</i> contained in the <i>Catalogue</i> reflected the then accepted general opinion of scholars and experts or fairly indicated that there was a conflict of such opinion or reflected the then current opinion of an expert acknowledged to be a leading expert in the relevant field; or
7.1.1 to terminate this agreement immediately for your breach of contract;	8 CLAIMS BY OTHER PERSONS IN RESPECT OF THE LOT	9.3.2 it can be established that the <i>Lot</i> is a <i>Forgery</i> only by means of a process not generally accepted for use until after the date on which the <i>Catalogue</i> was published or by means of a process which it was unreasonable in all the circumstances for us to have employed.
7.1.2 to retain possession of the <i>Lot</i> ;	8.1 Whenever it becomes apparent to us that the <i>Lot</i> is the subject of a claim by someone other than you and other than the <i>Seller</i> (or that such a claim can reasonably be expected to be made), we may, at our absolute discretion, deal with the <i>Lot</i> in any manner which appears to us to recognise the legitimate interests of ourselves and the other parties involved and lawfully to protect our position and our legitimate interests. Without prejudice to the generality of the discretion and by way of example, we may:	9.4 You authorise us to carry out such processes and tests on the <i>Lot</i> as we in our absolute discretion consider necessary to satisfy ourselves that the <i>Lot</i> is or is not a <i>Forgery</i> .
7.1.3 to remove, and/or store the <i>Lot</i> at your expense;	8.1.1 retain the <i>Lot</i> to investigate any question raised or reasonably expected by us to be raised in relation to the <i>Lot</i> ; and/or	9.5 If we are satisfied that a <i>Lot</i> is a <i>Forgery</i> we will (as principal) purchase the <i>Lot</i> from you and you will transfer the title to the <i>Lot</i> in question to us, with full title guarantee, free from any liens, charges, encumbrances and adverse claims, in accordance with the provisions of Sections 12(1) and 12(2) of the Sale of Goods Act 1979 and we will pay to you an amount equal to the sum of the <i>Purchase Price</i> , <i>Buyer's Premium</i> , VAT and <i>Expenses</i> paid by you in respect of the <i>Lot</i> .
7.1.4 to take legal proceedings against you for payment of any sums payable to us by you (including the <i>Purchase Price</i>) and/or damages for breach of contract;	8.1.2 deliver the <i>Lot</i> to a person other than you; and/or	9.6 The benefit of paragraph 9 is personal to, and incapable of assignment by, you.
7.1.5 to be paid interest on any monies due to us (after as well as before judgement or order) at the annual rate of 5% per annum above the base lending rate of National Westminster Bank Plc from time to time to be calculated on a daily basis from the date upon which such monies become payable until the date of actual payment;	8.1.3 commence interpleader proceedings or seek any other order of any court, mediator, arbitrator or government body; and/or	9.7 If you sell or otherwise dispose of your interest in the <i>Lot</i> , all rights and benefits under this paragraph will cease.
7.1.6 to repossess the <i>Lot</i> (or any part thereof) which has not become your property, and for this purpose (unless you buy the <i>Lot</i> as a <i>Consumer</i>) you hereby grant an irrevocable licence to us, by ourselves, our servants or agents, to enter upon all or any of your premises (with or without vehicles) during normal business hours to take possession of any <i>Lot</i> or part thereof;	8.1.4 require an indemnity and/or security from you in return for pursuing a course of action agreed to by you.	9.8 Paragraph 9 does not apply to a <i>Lot</i> made up of or including a Chinese painting or Chinese paintings, a motor vehicle or motor vehicles, a <i>Stamp</i> or <i>Stamps</i> or a <i>Book</i> or <i>Books</i> .
7.1.7 to sell the <i>Lot Without Reserve</i> by auction, private treaty or any other means on giving you three months' written notice of our intention to do so;	8.2 The discretion referred to in paragraph 8.1:	10 OUR LIABILITY
7.1.8 to retain possession of any of your other property in our possession for any purpose (including, without limitation, other goods sold to you or with us for <i>Sale</i>) until all sums due to us have been paid in full;	8.2.1 may be exercised at any time during which we have actual or constructive possession of the <i>Lot</i> , or at any time after such possession, where the cessation of such possession has occurred by reason of any decision, order or ruling of any court, mediator, arbitrator or government body; and	10.1 We will not be liable whether in negligence, other tort, breach of contract or statutory duty or in restitution or under the Misrepresentation Act 1967 or in any other way for lack of conformity with or any inaccuracy, error, misdescription or omission in any <i>Description</i> of the <i>Lot</i> or any <i>Entry</i> or <i>Estimate</i> in respect of it, made by us or on our behalf or by or on behalf of the <i>Seller</i> (whether made in writing, including in the <i>Catalogue</i> , or on the <i>Bonhams' Website</i> , or orally, or by conduct or otherwise) and whether made before or after this agreement or prior to or during the <i>Sale</i> .
7.1.9 to apply any monies received from you for any purpose whether at the time of your default or at any time thereafter in payment or part payment of any sums due to us by you under this agreement;	8.2.2 will not be exercised unless we believe that there exists a serious prospect of a good arguable case in favour of the claim.	10.2 Our duty to you while the <i>Lot</i> is at your risk and/or your property and in our custody and/or control is to exercise reasonable care in relation to it, but we will not be responsible for damage to the <i>Lot</i> or to other persons or things caused by:
7.1.10 on three months' written notice to sell, <i>Without Reserve</i> , any of your other property in our possession or under our control for any purpose (including other goods sold to you or with us for <i>Sale</i>) and to apply any monies due to you as a result of such <i>Sale</i> in payment or part payment of any amounts owed to us;	9 FORGERIES	10.2.1 handling the <i>Lot</i> if it was affected at the time of <i>Sale</i> to you by woodworm and any damage is caused as a result of it being affected by woodworm; or
7.1.11 refuse to allow you to register for a future <i>Sale</i> or to reject a bid from you at any future <i>Sale</i> or to require you to pay a deposit before any bid is accepted by us at any future <i>Sale</i> in which case we will be entitled to apply such deposit in payment or part payment, as the case may be, of the <i>Purchase Price</i> of any <i>Lot</i> of which you are the <i>Buyer</i> .	9.1 We undertake a personal responsibility for any <i>Forgery</i> in accordance with the terms of this paragraph 9.	10.2.2 changes in atmospheric pressure; nor will we be liable for:
7.2 You agree to indemnify us against all legal and other costs, all losses and all other <i>Expenses</i> (whether or not court proceedings will have been issued) incurred by us as a result of our taking steps under this paragraph 7 on a full indemnity basis together with interest thereon (after as well as before judgement or order) at the rate specified in paragraph 7.1.5 from the date upon which we become liable to pay the same until payment by you.	9.2 Paragraph 9 applies only if:	10.2.3 damage to tension stringed musical instruments; or
	9.2.1 your name appears as the named person to whom the original invoice was made out by us in respect of the <i>Lot</i> and that invoice has been paid; and	10.2.4 damage to gilded picture frames, plaster picture frames or picture frame glass; and if the <i>Lot</i> is or becomes dangerous, we may dispose of it without notice to you in advance in any manner we think fit and we will be under no liability to you for doing so.
	9.2.2 you notify us in writing as soon as reasonably practicable after you have become aware that the <i>Lot</i> is or may be a <i>Forgery</i> , and in any event within one year after the <i>Sale</i> , that the <i>Lot</i> is a <i>Forgery</i> ; and	
	9.2.3 within one month after such notification has been given, you return the <i>Lot</i> to us in the same condition as it was at the time of the <i>Sale</i> , accompanied by written evidence that the <i>Lot</i> is a <i>Forgery</i> and details of the <i>Sale</i> and <i>Lot</i> number sufficient to identify the <i>Lot</i> .	

10.3.1	We will not be liable to you for any loss of <i>Business</i> , <i>Business</i> profits, revenue or income or for loss of <i>Business</i> reputation or for disruption to <i>Business</i> or wasted time on the part of the <i>Buyer's</i> management or staff or, if you are buying the <i>Lot</i> in the course of a <i>Business</i> , for any indirect losses or consequential damages of any kind, irrespective in any case of the nature, volume or source of the loss or damage alleged to be suffered, and irrespective of whether the said loss or damage is caused by or claimed in respect of any negligence, other tort, breach of contract, statutory duty, bailee's duty, a restitutionary claim or otherwise.	the <i>Entry</i> in the <i>Catalogue</i> in respect of the <i>Lot</i> reflected the then accepted general opinion of scholars and experts or fairly indicated that there was a conflict of such opinion; or	12.7	The headings used in this agreement are for convenience only and will not affect its interpretation.
10.3.2	Unless you buy the <i>Lot</i> as a <i>Consumer</i> , in any circumstances where we are liable to you in respect of a <i>Lot</i> , or any act, omission, statement, representation in respect of it, or this agreement or its performance, and whether in damages, for an indemnity or contribution or for a restitutionary remedy or in any way whatsoever, our liability will be limited to payment of a sum which will not exceed by way of maximum the amount of the <i>Purchase Price</i> of the <i>Lot</i> plus <i>Buyer's Premium</i> (less any sum you may be entitled to recover from the <i>Seller</i>) irrespective in any case of the nature, volume or source of any loss or damage alleged to be suffered or sum claimed as due, and irrespective of whether the liability arises from negligence, other tort, breach of contract, statutory duty, bailee's duty, a restitutionary claim or otherwise.	it can be established that the <i>Lot</i> is a non-conforming <i>Lot</i> only by means of a process not generally accepted for use until after the date on which the <i>Catalogue</i> was published or by means of a process which it was unreasonable in all the circumstances for us to have employed; or	12.8	In this agreement "including" means "including, without limitation".
	You may wish to protect yourself against loss by obtaining insurance.	the <i>Lot</i> comprises atlases, maps, autographs, manuscripts, extra illustrated books, music or periodical publications; or	12.9	References to the singular will include reference to the plural (and vice versa) and reference to any one gender will include reference to the other genders.
10.4	Nothing set out above will be construed as excluding or restricting (whether directly or indirectly) any person's liability or excluding or restricting any person's rights or remedies in respect of (i) fraud, or (ii) death or personal injury caused by our negligence (or any person under our control or for whom we are legally responsible), or (iii) acts or omissions for which we are liable under the Occupiers Liability Act 1957, or (iv) any other liability to the extent the same may not be excluded or restricted as a matter of law, or (v) under our undertaking in paragraph 9 of these conditions.	the <i>Lot</i> was listed in the <i>Catalogue</i> under "collections" or "collections and various" or the <i>Lot</i> was stated in the <i>Catalogue</i> to comprise or contain a collection, issue or <i>Books</i> which are undescribed or the missing text or illustrations are referred to or the relevant parts of the <i>Book</i> contain blanks, half titles or advertisements.	12.10	Reference to a numbered paragraph is to a paragraph of this agreement.
	11	If we are reasonably satisfied that a <i>Lot</i> is a non-conforming <i>Lot</i> , we will (as principal) purchase the <i>Lot</i> from you and you will transfer the title to the <i>Lot</i> in question to us, with full title guarantee, free from any liens, charges, encumbrances and adverse claims and we will pay to you an amount equal to the sum of the <i>Purchase Price</i> and <i>Buyer's Premium</i> paid by you in respect of the <i>Lot</i> .	12.11	Save as expressly provided in paragraph 12.12 nothing in this agreement confers (or purports to confer) on any person who is not a party to this agreement any benefit conferred by, or the right to enforce any term of, this agreement.
	BOOKS MISSING TEXT OR ILLUSTRATIONS	The benefit of paragraph 10 is personal to, and incapable of assignment by, you and if you sell or otherwise dispose of your interest in the <i>Lot</i> , all rights and benefits under this paragraph will cease.	12.12	Where this agreement confers an immunity from, and/or an exclusion or restriction of, the responsibility and/or liability of <i>Bonhams</i> , it will also operate in favour and for the benefit of <i>Bonhams'</i> holding company and the subsidiaries of such holding company and the successors and assigns of <i>Bonhams</i> and of such companies and of any officer, employee and agent of <i>Bonhams</i> and such companies, each of whom will be entitled to rely on the relevant immunity and/or exclusion and/or restriction within and for the purposes of Contracts (Rights of Third Parties) Act 1999, which enables the benefit of a contract to be extended to a person who is not a party to the contract, and generally at law.
	Where the <i>Lot</i> is made up wholly of a <i>Book</i> or <i>Books</i> and any <i>Book</i> does not contain text or illustrations (in either case referred to as a "non-conforming <i>Lot</i> "), we undertake a personal responsibility for such a non-conforming <i>Lot</i> in accordance with the terms of this paragraph, if:	12 MISCELLANEOUS	13 GOVERNING LAW	13 GOVERNING LAW
	the original invoice was made out by us to you in respect of the <i>Lot</i> and that invoice has been paid; and	12.1 You may not assign either the benefit or burden of this agreement.		All transactions to which this agreement applies and all connected matters will be governed by and construed in accordance with the laws of that part of the United Kingdom where the <i>Sale</i> takes (or is to take) place and we and you each submit to the exclusive jurisdiction of the courts of that part of the United Kingdom, save that we may bring proceedings against you in any other court of competent jurisdiction to the extent permitted by the laws of the relevant jurisdiction. <i>Bonhams</i> has a complaints procedure in place.
	you notify us in writing as soon as reasonably practicable after you have become aware that the <i>Lot</i> is or may be a non-conforming <i>Lot</i> , and in any event within 20 days after the <i>Sale</i> (or such longer period as we may agree in writing) that the <i>Lot</i> is a non-conforming <i>Lot</i> ; and	12.2 Our failure or delay in enforcing or exercising any power or right under this agreement will not operate or be deemed to operate as a waiver of our rights under it except to the extent of any express waiver given to you in writing. Any such waiver will not affect our ability subsequently to enforce any right arising under this agreement.		DATA PROTECTION – USE OF YOUR INFORMATION
	within 20 days of the date of the relevant <i>Sale</i> (or such longer period as we may agree in writing) you return the <i>Lot</i> to us in the same condition as it was at the time of the <i>Sale</i> , accompanied by written evidence that the <i>Lot</i> is a non-conforming <i>Lot</i> and details of the <i>Sale</i> and <i>Lot</i> number sufficient to identify the <i>Lot</i> .	12.3 If either party to this agreement is prevented from performing that party's respective obligations under this agreement by circumstances beyond its reasonable control or if performance of its obligations would by reason of such circumstances give rise to a significantly increased financial cost to it, that party will not, for so long as such circumstances prevail, be required to perform such obligations. This paragraph does not apply to the obligations imposed on you by paragraph 3.		Where we obtain any personal information about you, we shall only use it in accordance with the terms of our Privacy Policy (subject to any additional specific consent(s) you may have given at the time your information was disclosed). A copy of our Privacy Policy can be found on our <i>Website</i> www.bonhams.com or requested by post from Customer Services Department, 101 New Bond Street, London W1S 1SR, United Kingdom or by email from info@bonhams.com.
	but not if:	12.4 Any notice or other communication to be given under this agreement must be in writing and may be delivered by hand or sent by first class post or air mail or fax transmission (if to <i>Bonhams</i> marked for the attention of the Company Secretary), to the address or fax number of the relevant party given in the <i>Contract Form</i> (unless notice of any change of address is given in writing). It is the responsibility of the sender of the notice or communication to ensure that it is received in a legible form within any applicable time period.		APPENDIX 3
	the <i>Entry</i> in the <i>Catalogue</i> in respect of the <i>Lot</i> indicates that the rights given by this paragraph do not apply to it; or	12.5 If any term or any part of any term of this agreement is held to be unenforceable or invalid, such unenforceability or invalidity will not affect the enforceability and validity of the remaining terms or the remainder of the relevant term.		DEFINITIONS AND GLOSSARY
		12.6 References in this agreement to <i>Bonhams</i> will, where appropriate, include reference to <i>Bonhams'</i> officers, employees and agents.		Where these Definitions and Glossary are incorporated, the following words and phrases used have (unless the context otherwise requires) the meanings given to them below. The Glossary is to assist you to understand words and phrases which have a specific legal meaning with which you may not be familiar.
				LIST OF DEFINITIONS
				"Additional Premium" a premium, calculated in accordance with the <i>Notice to Bidders</i> , to cover <i>Bonhams' Expenses</i> relating to the payment of royalties under the Artists Resale Right Regulations 2006 which is payable by the <i>Buyer</i> to <i>Bonhams</i> on any <i>Lot</i> marked [AR] which sells for a <i>Hammer Price</i> which together with the <i>Buyer's Premium</i> (but excluding any VAT) equals or exceeds 1000 euros (converted into the currency of the <i>Sale</i> using the European Central Bank Reference rate prevailing on the date of the <i>Sale</i>).
				"Auctioneer" the representative of <i>Bonhams</i> conducting the <i>Sale</i> .

"Bidder" a person who has completed a *Bidding Form*.

"Bidding Form" our Bidding Registration Form, our Absentee Bidding Form or our Telephone Bidding Form.

"Bonhams" Bonhams 1793 Limited or its successors or assigns. *Bonhams* is also referred to in the *Buyer's Agreement*, the Conditions of Business and the *Notice to Bidders* by the words "we", "us" and "our".

"Book" a printed *Book* offered for *Sale* at a specialist *Book Sale*.

"Business" includes any trade, *Business* and profession.

"Buyer" the person to whom a *Lot* is knocked down by the *Auctioneer*. The *Buyer* is also referred to in the *Contract for Sale* and the *Buyer's Agreement* by the words "you" and "your".

"Buyer's Agreement" the contract entered into by *Bonhams* with the *Buyer* (see Appendix 2 in the *Catalogue*).

"Buyer's Premium" the sum calculated on the *Hammer Price* at the rates stated in the *Notice to Bidders*.

"Catalogue" the *Catalogue* relating to the relevant *Sale*, including any representation of the *Catalogue* published on our *Website*.

"Commission" the *Commission* payable by the *Seller* to *Bonhams* calculated at the rates stated in the *Contract Form*.

"Condition Report" a report on the physical condition of a *Lot* provided to a *Bidder* or potential *Bidder* by *Bonhams* on behalf of the *Seller*.

"Conditions of Sale" the *Notice to Bidders*, *Contract for Sale*, *Buyer's Agreement* and Definitions and Glossary.

"Consignment Fee" a fee payable to *Bonhams* by the *Seller* calculated at rates set out in the Conditions of Business.

"Consumer" a natural person who is acting for the relevant purpose outside his trade, *Business* or profession.

"Contract Form" the *Contract Form*, or vehicle *Entry form*, as applicable, signed by or on behalf of the *Seller* listing the *Lots* to be offered for *Sale* by *Bonhams*.

"Contract for Sale" the *Sale* contract entered into by the *Seller* with the *Buyer* (see Appendix 1 in the *Catalogue*).

"Contractual Description" the only *Description* of the *Lot* (being that part of the *Entry* about the *Lot* in the *Catalogue* which is in bold letters, any photograph (except for the colour) and the contents of any *Condition Report*) to which the *Seller* undertakes in the *Contract of Sale* the *Lot* corresponds.

"Description" any statement or representation in any way descriptive of the *Lot*, including any statement or representation relating to its authorship, attribution, condition, provenance, authenticity, style, period, age, suitability, quality, origin, value, estimated selling price (including the *Hammer Price*).

"Entry" a written statement in the *Catalogue* identifying the *Lot* and its *Lot* number which may contain a *Description* and illustration(s) relating to the *Lot*.

"Estimate" a statement of our opinion of the range within which the hammer is likely to fall.

"Expenses" charges and *Expenses* paid or payable by *Bonhams* in respect of the *Lot* including legal *Expenses*, banking charges and *Expenses* incurred as a result of an electronic transfer of money, charges and *Expenses* for loss and damage cover, insurance, *Catalogue* and other reproductions and illustrations, any customs duties, advertising, packing or shipping costs, reproductions rights' fees, taxes, levies, costs of testing, searches or enquiries, preparation of the *Lot* for *Sale*, storage charges, removal charges, removal charges or costs of collection from the *Seller* as the *Seller's* agents or from a defaulting *Buyer*, plus *VAT* if applicable.

"Forgery" an imitation intended by the maker or any other person to deceive as to authorship, attribution, origin, authenticity, style, date, age, period, provenance, culture, source or composition, which at the date of the *Sale* had a value materially less than it would have had if the *Lot* had not been such an imitation, and which is not stated to be such an imitation in any description of the *Lot*. A *Lot* will not be a *Forgery* by reason of any damage to, and/or restoration and/or modification work (including repainting or over painting) having been carried out on the *Lot*, where that damage, restoration or modification work (as the case may be) does not substantially affect the identity of the *Lot* as one conforming to the *Description* of the *Lot*.

"Guarantee" the obligation undertaken personally by *Bonhams* to the *Buyer* in respect of any *Forgery* and, in the case of specialist *Stamp Sales* and/or specialist *Book Sales*, a *Lot* made up of a *Stamp* or *Stamps* or a *Book* or *Books* as set out in the *Buyer's Agreement*.

"Hammer Price" the price in the currency in which the *Sale* is conducted at which a *Lot* is knocked down by the *Auctioneer*.

"Loss and Damage Warranty" means the warranty described in paragraph 8.2 of the Conditions of Business.

"Loss and Damage Warranty Fee" means the fee described in paragraph 8.2.3 of the Conditions of Business.

"Lot" any item consigned to *Bonhams* with a view to its *Sale* at auction or by private treaty (and reference to any *Lot* will include, unless the context otherwise requires, reference to individual items comprised in a group of two or more items offered for *Sale* as one *Lot*).

"Motoring Catalogue Fee" a fee payable by the *Seller* to *Bonhams* in consideration of the additional work undertaken by *Bonhams* in respect of the cataloguing of motor vehicles and in respect of the promotion of *Sales* of motor vehicles.

"New Bond Street" means *Bonhams'* saleroom at 101 New Bond Street, London W1S 1SR.

"Notional Charges" the amount of *Commission* and *VAT* which would have been payable if the *Lot* had been sold at the *Notional Price*.

"Notional Fee" the sum on which the *Consignment Fee* payable to *Bonhams* by the *Seller* is based and which is calculated according to the formula set out in the Conditions of Business.

"Notional Price" the latest in time of the average of the high and low *Estimates* given by us to you or stated in the *Catalogue* or, if no such *Estimates* have been given or stated, the *Reserve* applicable to the *Lot*.

"Notice to Bidders" the notice printed at the back or front of our *Catalogues*.

"Purchase Price" the aggregate of the *Hammer Price* and *VAT* on the *Hammer Price* (where applicable), the *Buyer's Premium* and *VAT* on the *Buyer's Premium* and any *Expenses*.

"Reserve" the minimum price at which a *Lot* may be sold (whether at auction or by private treaty).

"Sale" the auction *Sale* at which a *Lot* is to be offered for *Sale* by *Bonhams*.

"Sale Proceeds" the net amount due to the *Seller* from the *Sale* of a *Lot*, being the *Hammer Price* less the *Commission*, any *VAT* chargeable thereon, *Expenses* and any other amount due to us in whatever capacity and howsoever arising.

"Seller" the person who offers the *Lot* for *Sale* named on the *Contract Form*. Where the person so named identifies on the form another person as acting as his agent, or where the person named on the *Contract Form* acts as an agent for a principal (whether such agency is disclosed to *Bonhams* or not), "*Seller*" includes both the agent and the principal who shall be jointly and severally liable as such. The *Seller* is also referred to in the Conditions of Business by the words "you" and "your".

"Specialist Examination" a visual examination of a *Lot* by a specialist on the *Lot*.

"Stamp" means a postage *Stamp* offered for *Sale* at a Specialist *Stamp Sale*.

"Standard Examination" a visual examination of a *Lot* by a non-specialist member of *Bonhams'* staff.

"Storage Contract" means the contract described in paragraph 8.3.3 of the Conditions of Business or paragraph 4.4 of the *Buyer's Agreement* (as appropriate).

"Storage Contractor" means the company identified as such in the *Catalogue*.

"Terrorism" means any act or threatened act of terrorism, whether any person is acting alone or on behalf of or in connection with any organisation(s) and/or government(s), committed for political, religious or ideological or similar purposes including, but not limited to, the intention to influence any government and/or put the public or any section of the public into fear.

"Trust Account" the bank account of *Bonhams* into which all sums received in respect of the *Purchase Price* of any *Lot* will be paid, such account to be a distinct and separate account to *Bonhams'* normal business bank account.

"VAT" value added tax at the prevailing rate at the date of the *Sale* in the United Kingdom.

"Website" *Bonhams Website* at www.bonhams.com

"Withdrawal Notice" the *Seller's* written notice to *Bonhams* revoking *Bonhams'* instructions to sell a *Lot*.

"Without Reserve" where there is no minimum price at which a *Lot* may be sold (whether at auction or by private treaty).

GLOSSARY

The following expressions have specific legal meanings with which you may not be familiar. The following glossary is intended to give you an understanding of those expressions but is not intended to limit their legal meanings:

"artist's resale right": the right of the creator of a work of art to receive a payment on *Sales* of that work subsequent to the original *Sale* of that work by the creator of it as set out in the Artists Resale Right Regulations 2006.

"bailee": a person to whom goods are entrusted.

"indemnity": an obligation to put the person who has the benefit of the indemnity in the same position in which he would have been, had the circumstances giving rise to the indemnity not arisen and the expression "indemnify" is construed accordingly.

"interpleader proceedings": proceedings in the Courts to determine ownership or rights over a *Lot*.

"knocked down": when a *Lot* is sold to a *Bidder*, indicated by the fall of the hammer at the *Sale*.

"lien": a right for the person who has possession of the *Lot* to retain possession of it.

"risk": the possibility that a *Lot* may be lost, damaged, destroyed, stolen, or deteriorate in condition or value.

"title": the legal and equitable right to the ownership of a *Lot*.

"tort": a legal wrong done to someone to whom the wrong doer has a duty of care.

SALE OF GOODS ACT 1979

The following is an extract from the Sale of Goods Act 1979:

"Section 12 Implied terms about title, etc

- (1) In a contract of sale, other than one to which subsection (3) below applies, there is an implied term on the part of the seller that in the case of a sale he has a right to sell the goods, and in the case of an agreement to sell he will have such a right at the time when the property is to pass.
- (2) In a contract of sale, other than one to which subsection (3) below applies, there is also an implied term that-
 - (a) the goods are free, and will remain free until the time when the property is to pass, from any charge or encumbrance not disclosed or known to the buyer before the contract is made, and
 - (b) the buyer will enjoy quiet possession of the goods except in so far as it may be disturbed by the owner or other person entitled to the benefit of any charge or encumbrance so disclosed or known.
- (3) This subsection applies to a contract of sale in the case of which there appears from the contract or is to be inferred from its circumstances an intention that the seller should transfer only such title as he or a third person may have.
- (4) In a contract to which subsection (3) above applies there is an implied term that all charges or encumbrances known to the seller and not known to the buyer have been disclosed to the buyer before the contract is made.
- (5) In a contract to which subsection (3) above applies there is also an implied term that none of the following will disturb the buyer's quiet possession of the goods, namely:
 - (a) the seller;
 - (b) in a case where the parties to the contract intend that the seller should transfer only such title as a third person may have, that person;
 - (c) anyone claiming through or under the seller or that third person otherwise than under a charge or encumbrance disclosed or known to the buyer before the contract is made.
- (5A) As regards England and Wales and Northern Ireland, the term implied by subsection (1) above is a condition and the terms implied by subsections (2), (4) and (5) above are warranties."

Bonhams Specialist Departments

To e-mail any of the below use the first name dot second name @bonhams.com eg. charles.obrien@bonhams.com

19th Century Paintings

UK
Charles O' Brien
+44 20 7468 8360
U.S.A
Madalina Lazen
+1 212 644 9108

20th Century British Art

Matthew Bradbury
+44 20 7468 8295

Aboriginal Art

Francesca Cavazzini
+61 2 8412 2222

African, Oceanic & Pre-Columbian Art

UK
Philip Keith
+44 2920 727 980
U.S.A
Fredric Backlar
+1 323 436 5416

American Paintings

Alan Fausel
+1 212 644 9039

Antiquities

Madeleine Perridge
+44 20 7468 8226

Antique Arms & Armour

UK
David Williams
+44 20 7393 3807
U.S.A
Paul Carella
+1 415 503 3360

Art Collections, Estates & Valuations

Harvey Cammell
+44 (0) 20 7468 8340

Art Nouveau & Decorative Art & Design

UK
Mark Oliver
+44 20 7393 3856
U.S.A
Frank Maraschiello
+1 212 644 9059

Australian Art

Merryn Schriever
+61 2 8412 2222
Alex Clark
+61 3 8640 4088

Australian Colonial Furniture and Australiana

+1 415 861 7500

Books, Maps & Manuscripts

UK
Matthew Haley
+44 20 7393 3817
U.S.A
Christina Geiger
+1 212 644 9094

British & European Glass

UK
Simon Cottle
+44 20 7468 8383
U.S.A.
Suzy Pai
+1 415 503 3343

British & European Porcelain & Pottery

UK
John Sandon
+44 20 7468 8244
U.S.A
Peter Scott
+1 415 503 3326

California & American Paintings

Scot Levitt
+1 323 436 5425

Carpets

UK
Mark Dance
+44 8700 27361
U.S.A.
Hadji Rahimipour
+1 415 503 3392

Chinese & Asian Art

UK
Asaph Hyman
+44 20 7468 5888
U.S.A
Dessa Goddard
+1 415 503 3333
HONG KONG
+852 3607 0010
AUSTRALIA
Yvett Klein
+61 2 8412 2222

Clocks

UK
James Stratton
+44 20 7468 8364
U.S.A
Jonathan Snellenburg
+1 212 461 6530

Coins & Medals

UK
John Millensted
+44 20 7393 3914
U.S.A
Paul Song
+1 323 436 5455

Contemporary Art

UK
Ralph Taylor
+44 20 7447 7403
U.S.A
Jeremy Goldsmith
+1 917 206 1656

Costume & Textiles

Claire Browne
+44 1564 732969

Entertainment Memorabilia

UK
Stephanie Connell
+44 20 7393 3844
U.S.A
Catherine Williamson
+1 323 436 5442

Furniture & Works of Art

UK
Fergus Lyons
+44 20 7468 8221
U.S.A
Jeffrey Smith
+1 415 503 3413

Greek Art

Olympia Pappa
+44 20 7468 8314

Golf Sporting Memorabilia

Kevin Mcgimpsey
+44 1244 353123

Irish Art

Penny Day
+44 20 7468 8366

Impressionist & Modern Art

UK
India Phillips
+44 20 7468 8328
U.S.A
Tanya Wells
+1 917 206 1685

Islamic & Indian Art

Claire Penhallurick
+44 20 7468 8249

Japanese Art

UK
Suzannah Yip
+44 20 7468 8368
U.S.A
Jeff Olson
+1 212 461 6516

Jewellery

UK
Jean Ghika
+44 20 7468 8282
U.S.A
Susan Abeles
+1 212 461 6525
AUSTRALIA
Anellie Manolas
+61 2 8412 2222
HONG KONG
Graeme Thompson
+852 3607 0006

Marine Art

UK
Veronique Scorer
+44 20 7393 3962
U.S.A
Gregg Dietrich
+1 917 206 1697

Mechanical Music

Jon Baddeley
+44 20 7393 3872

Modern, Contemporary & Latin American Art

U.S.A
Alexis Chompaisal
+1 323 436 5469

Modern Design

Gareth Williams
+44 20 7468 5879

Motor Cars

UK
Tim Schofield
+44 20 7468 5804
U.S.A
Mark Osborne
+1 415 503 3353
EUROPE
Philip Kantor
+32 476 879 471

Automobilia

UK
Toby Wilson
+44 8700 273 619
U.S.A
Kurt Forry
+1 415 391 4000

Motorcycles

Ben Walker
+44 8700 273616
Automobilia
Adrian Pipiros
+44 8700 273621

Musical Instruments

Philip Scott
+44 20 7393 3855

Native American Art

Jim Haas
+1 415 503 3294

Natural History

U.S.A
Claudia Florian
+1 323 436 5437

Old Master Pictures

UK
Andrew Mckenzie
+44 20 7468 8261
U.S.A
Mark Fisher
+1 323 436 5488

Orientalist Art

Charles O'Brien
+44 20 7468 8360

Photography

U.S.A
Judith Eurich
+1 415 503 3259

Portrait Miniatures

Jennifer Tonkin
+44 20 7393 3986

Prints and Multiples

UK
Rupert Worrall
+44 20 7468 8262
U.S.A
Judith Eurich
+1 415 503 3259

Russian Art

UK
Sophie Law
+44 20 7468 8334
U.S.A
Yelena Harbick
+1 212 644 9136

Scientific Instruments

Jon Baddeley
+44 20 7393 3872
U.S.A.
Jonathan Snellenburg
+1 212 461 6530

Scottish Pictures

Chris Brickley
+44 131 240 2297

Silver & Gold Boxes

UK
Michael Moorcroft
+44 20 7468 8241
U.S.A
Aileen Ward
+1 800 223 5463

South African Art

Giles Peppiatt
+44 20 7468 8355

Sporting Guns

Patrick Hawes
+44 20 7393 3815

Toys & Dolls

Leigh Gotch
+44 20 8963 2839

Travel Pictures

Veronique Scorer
+44 20 7393 3962

Urban Art

Gareth Williams
+44 20 7468 5879

Watches & Wristwatches

UK
Paul Maudsley
+44 20 7447 7412
U.S.A.
Jonathan Snellenburg
+1 212 461 6530
HONG KONG
Nick Biebuyck
+852 2918 4321

Whisky

UK
Martin Green
+44 1292 520000
U.S.A
Joseph Hyman
+1 917 206 1661
HONG KONG
Daniel Lam
+852 3607 0004

Wine

UK
Richard Harvey
+44 (0) 20 7468 5811
U.S.A
Doug Davidson
+1 415 503 3363
HONG KONG
Daniel Lam
+852 3607 0004

Registration and Bidding Form

(Attendee / Absentee / Online / Telephone Bidding)

Please circle your bidding method above.

Bonhams

--	--	--	--

Paddle number (for office use only)

This sale will be conducted in accordance with Bonhams' Conditions of Sale and bidding and buying at the Sale will be regulated by these Conditions. You should read the Conditions in conjunction with the Sale Information relating to this Sale which sets out the charges payable by you on the purchases you make and other terms relating to bidding and buying at the Sale. You should ask any questions you have about the Conditions before signing this form. These Conditions also contain certain undertakings by bidders and buyers and limit Bonhams' liability to bidders and buyers.

Data protection – use of your information

Where we obtain any personal information about you, we shall only use it in accordance with the terms of our Privacy Policy (subject to any additional specific consent(s) you may have given at the time your information was disclosed). A copy of our Privacy Policy can be found on our website (www.bonhams.com) or requested by post from Customer Services Department, 101 New Bond Street, London W1S 1SR United Kingdom or by e-mail from info@bonhams.com.

Credit and Debit Card Payments

There is no surcharge for payments made by debit cards issued by a UK bank. All other debit cards and all credit cards are subject to a 2% surcharge on the total invoice price.

Notice to Bidders.

Clients are requested to provide photographic proof of ID - passport, driving licence, ID card, together with proof of address - utility bill, bank or credit card statement etc. Corporate clients should also provide a copy of their articles of association / company registration documents, together with a letter authorising the individual to bid on the company's behalf. Failure to provide this may result in your bids not being processed. For higher value lots you may also be asked to provide a bank reference.

If successful

I will collect the purchases myself

Please contact me with a shipping quote (if applicable)

Sale title: Jewellery		Sale date: Tuesday 2 December 2014													
Sale no. 21842		Sale venue: Oxford													
<p>If you are not attending the sale in person, please provide details of the Lots on which you wish to bid at least 24 hours prior to the sale. Bids will be rounded down to the nearest increment. Please refer to the Notice to Bidders in the catalogue for further information relating to Bonhams executing telephone, online or absentee bids on your behalf. Bonhams will endeavour to execute these bids on your behalf but will not be liable for any errors or failing to execute bids.</p> <p>General Bid Increments:</p> <table border="0"> <tr> <td>£10 - 200by 10s</td> <td>£10,000 - 20,000by 1,000s</td> </tr> <tr> <td>£200 - 500by 20 / 50 / 80s</td> <td>£20,000 - 50,000by 2,000 / 5,000 / 8,000s</td> </tr> <tr> <td>£500 - 1,000by 50s</td> <td>£50,000 - 100,000by 5,000s</td> </tr> <tr> <td>£1,000 - 2,000by 100s</td> <td>£100,000 - 200,000by 10,000s</td> </tr> <tr> <td>£2,000 - 5,000by 200 / 500 / 800s</td> <td>above £200,000at the auctioneer's discretion</td> </tr> <tr> <td>£5,000 - 10,000by 500s</td> <td></td> </tr> </table> <p>The auctioneer has discretion to split any bid at any time.</p>				£10 - 200by 10s	£10,000 - 20,000by 1,000s	£200 - 500by 20 / 50 / 80s	£20,000 - 50,000by 2,000 / 5,000 / 8,000s	£500 - 1,000by 50s	£50,000 - 100,000by 5,000s	£1,000 - 2,000by 100s	£100,000 - 200,000by 10,000s	£2,000 - 5,000by 200 / 500 / 800s	above £200,000at the auctioneer's discretion	£5,000 - 10,000by 500s	
£10 - 200by 10s	£10,000 - 20,000by 1,000s														
£200 - 500by 20 / 50 / 80s	£20,000 - 50,000by 2,000 / 5,000 / 8,000s														
£500 - 1,000by 50s	£50,000 - 100,000by 5,000s														
£1,000 - 2,000by 100s	£100,000 - 200,000by 10,000s														
£2,000 - 5,000by 200 / 500 / 800s	above £200,000at the auctioneer's discretion														
£5,000 - 10,000by 500s															
Customer Number		Title													
First Name		Last Name													
Company name (to be invoiced if applicable)															
Address															
City		County / State													
Post / Zip code		Country													
Telephone mobile		Telephone daytime													
Telephone evening		Fax													
Preferred number(s) in order for Telephone Bidding (inc. country code)															
E-mail (in capitals)															
By providing your email address above, you authorise Bonhams to send you marketing material and news concerning Bonhams and partner organisations. Bonhams does not sell or trade email addresses.															
I am registering to bid as a private client <input type="checkbox"/>		I am registering to bid as a trade client <input type="checkbox"/>													
If registered for VAT in the EU please enter your registration here: □□ / □□□ - □□□□ - □□		Please tick if you have registered with us before <input type="checkbox"/>													

Please note that all telephone calls are recorded.

Telephone or Absentee (T / A)	Lot no.	Brief description	MAX bid in GBP (excluding premium & VAT)	Covering bid*

FOR WINE SALES ONLY

Please leave lots "available under bond" in bond I will collect from Park Royal or bonded warehouse Please include delivery charges (minimum charge of £20 + VAT)

BY SIGNING THIS FORM YOU AGREE THAT YOU HAVE READ AND UNDERSTAND OUR CONDITIONS OF SALE AND WISH TO BE BOUND BY THEM, AND AGREE TO PAY THE BUYER'S PREMIUM AND ANY OTHER CHARGES MENTIONED IN THE NOTICE TO BIDDERS. THIS AFFECTS YOUR LEGAL RIGHTS.

Your signature: _____ Date: _____

* Covering Bid: A maximum bid (exclusive of Buyers Premium and VAT) to be executed by Bonhams only if we are unable to contact you by telephone, or should the connection be lost during bidding.

NB. Payment will only be accepted from an account in the same name as shown on the invoice and Auction Registration form.

Please email or fax the completed Auction Registration form and requested information to:
 Bonhams, Customer Services, 101 New Bond Street, London, W1S 1SR. Tel: +44 (0) 20 7447 7447 Fax: +44 (0) 20 7447 7401, bids@bonhams.com
 Bonhams 1793 Limited. Montpelier Street, London SW7 1HH. Incorporated in England. Company Number 4326560.

UK/05/14



£ 1793

Bonhams

Banbury Road
Shipton on Cherwell
Kidlington
Oxford OX5 1JH

+44 (0) 1865 853 640
+44 (0) 1865 372 722 (fax)

