

Jewellery

Wednesday 7 August 2013 at 11am
Knightsbridge, London





273

Jewellery

Wednesday 7 August 2013 at 11am
Knightsbridge, London

Bonhams

Montpelier Street
Knightsbridge
London SW7 1HH
www.bonhams.com

Viewing

Sunday 4 August 11am to 3pm
Monday 5 August 9.30am to 4.30pm
Tuesday 6 August 9.30am to 4.30pm
Wednesday 7 August 9am to 10am,
by appointment only

Trade View

Thursday 1 August 9.30am to 4.30pm,
by appointment only

Bids

+44 (0) 20 7447 7448
+44 (0) 20 7447 7401 fax
To bid via the internet please visit
www.bonhams.com

Please note that bids should be submitted no later than 24 hours prior to the sale. New bidders must also provide proof of identity when submitting bids. Failure to do this may result in your bids not being processed.

Bidding by telephone will only be accepted on a lot with a lower estimate in excess of £400.

Live online bidding is available for this sale

Please email bids@bonhams.com with "Live bidding" in the subject line 48 hours before the auction to register for this service.

Enquiries

Carole Gordon FGA DGA
Aurélia Carré GG
Milly Grounds FGA
Amélie Lambert FGA
Sarah Duncan
+44 (0)20 7393 3971
jewellery@bonhams.com

Administration

Eleanor Booth
+44 (0) 20 7393 3970

Customer Services

Monday to Friday 8.30am to 6pm
+44 (0) 20 7447 7447

Sale number: 20636

Catalogue: £8

Please see back of catalogue for important notice to bidders

Illustrations

Front cover illustration: Lot 351
Inside front cover: Lot 273
Inside back cover: Lot 169

Please note that as a result of recent legislation ruby and jadeite gemstones of Burmese (Myanmar) origin may not be imported into the US. Rubies and jadeite of non-Burmese origin require certification before import into the US. Items affected are marked with a symbol ≈

Important Notice Regarding Importation Into The United States of Rolex Watches
Bonhams cannot arrange for the delivery of Rolex watches into The United States. The buyer or designated agent may collect the property in the country of sale.



Bonhams 1793 Limited
Registered No. 4326560
Registered Office: Montpelier Galleries
Montpelier Street,
London SW7 1HH
+44 (0) 20 7393 3900
+44 (0) 20 7393 3905 fax

Bonhams 1793 Ltd Directors
Robert Brooks Chairman, Colin Sheaf Deputy Chairman,
Malcolm Barber Group Managing Director,
Matthew Girling CEO UK and Europe,
Geoffrey Davies, Jonathan Horwich, James Knight,
Patrick Meade, Caroline Oliphant, Hugh Watchorn.

Bonhams UK Ltd Directors
Colin Sheaf Chairman, Jonathan Baddeley, Antony Bennett,
Matthew Bradbury, Harvey Cammell, Simon Cottle,
Andrew Currie, David Dallas, Paul Davidson, Jean Ghika,
Charles Graham-Campbell, Miranda Grant, Robin Hereford,
Asaph Hyman, Charles Lanning, Camilla Lombardi,
Fergus Lyons, Paul Maudsley, Gordon McFarlan,
Andrew McKenzie, Simon Mitchell, Jeff Muse, Mike Neill,
Charlie O'Brien, Giles Peppiatt, Peter Rees, Julian Roup,

Iain Rushbrook, John Sandon, Tim Schofield,
Veronique Scorer, James Stratton, Roger Tappin,
Shahin Virani, David Williams, Michael Wynnell-Mayow.

1

A pearl and diamond necklace, circa 1890

Of floral design, each graduated flowerhead set with a 4.2mm-4.7mm pearl, within a cushion-shaped diamond surround, suspending circular rose-cut diamond drops, in closed-back settings, interspersed with similarly-cut diamond scrolls, suspending pearl drops, *cushion-shaped diamonds approx. 1.85cts total, one diamond deficient, length 37.0cm*
£1,500 - 2,000 €1,700 - 2,300

Accompanied by a report from The Gem & Pearl Laboratory stating that a sample of pearls was found to be natural, saltwater. Report number 08022, dated 25th June 2013.

2

An early 19th century diamond cluster ring

Designed as a flowerhead, set throughout with rose-cut diamonds in closed-back settings, between fleur-de-lys shoulders, *later mount, ring size S*
£1,200 - 1,500 €1,400 - 1,700

3

A 19th century diamond spray brooch

The floral spray set throughout with cushion-shaped diamonds, mounted in silver and gold, *diamonds approx. 7.00cts total, brooch fitting with French assay mark, originally part of a larger piece, length 8.2cm*
£3,000 - 4,000 €3,500 - 4,600

4*

A diamond brooch/pendant, circa 1890

The oval openwork plaque designed as a radiating starburst, set throughout with cushion-shaped diamonds, the largest to the centre, suspended from a detachable similarly-cut diamond-set bale, mounted in silver and gold, *principal diamond approx. 1.15cts, remaining diamonds approx. 4.05cts total, length 5.0cm*
£1,800 - 2,200 €2,100 - 2,600

5

A three-strand pearl necklace with diamond-set clasp

The three graduated rows of 2.2mm-3.8mm pearls, to a navette-shaped clasp set with rose-cut diamonds in closed-back settings, *length of shortest strand 36.5cm*
£2,500 - 3,000 €2,900 - 3,500

Accompanied by a report from The Gem & Pearl Laboratory stating that an extensive sample of pearls was found to be natural, saltwater. Report number 07824, dated 29th May 2013.

6

A late 19th/early 20th century diamond brooch/pendant

The snowflake brooch set throughout with cushion-shaped diamonds, suspended from later detachable articulated knife-edge bars and a further bow surmount set with rose-cut and cushion-shaped diamonds in millegrain collet-settings, *cushion-shaped diamonds approx. 3.75cts total, composite, length 5.7cm*
£1,500 - 2,000 €1,700 - 2,300

7*

A diamond target brooch/pendant, circa 1890

The openwork circular plaque, set throughout with graduated cushion-shaped diamonds, the largest to the centre, to a similarly-cut diamond detachable surmount, mounted in silver and gold, *principal diamond approx. 0.80ct, remaining diamonds approx. 5.95cts total, later pin fitting, length 3.2cm*
£2,200 - 2,500 €2,600 - 2,900

8

A pair of diamond earrings

Of stylised foliate design, set throughout with cushion-shaped diamonds, *diamonds approx. 3.50cts total, length 2.9cm*
£2,000 - 2,500 €2,300 - 2,900

9[≈]

An early 20th century pearl, ruby, sapphire and diamond necklace

The graduating row of collet-set cushion-shaped and rose-cut diamonds, interspersed at regular intervals with circular-cut rubies and sapphires in collet-settings, and centrally-set with a 5.7mm bouton pearl, to a later trace-link chain and a pear-shaped and rose-cut diamond clasp, *cushion and pear-shaped diamonds approx. 2.40cts total, length 33.7cm*
£1,800 - 2,200 €2,100 - 2,600

Accompanied by a report from The Gem & Pearl Laboratory stating that the pearl is natural, saltwater. Report number 08009, dated 21st June 2013.

10

A natural pearl and diamond-set stickpin

The oval pearl, measuring 6.3mm-6.9mm, capped by rose-cut diamonds, *length 6.5cm*
£700 - 900 €810 - 1,000

Accompanied by a report from The Gem & Pearl Laboratory stating that the pearl is natural, saltwater. Report number 07826, dated 29th May 2013.

11

A diamond star brooch/pendant, circa 1890

The sixteen-ray star, set throughout with graduated cushion-shaped and rose-cut diamonds, mounted in silver and gold, *cushion-shaped diamonds approx. 2.95cts total, detachable brooch fitting, length 3.9cm*
£1,200 - 1,500 €1,400 - 1,700

12

A diamond hinged bangle, circa 1890

The graduated row of cushion-shaped diamonds, within a frame of smaller similarly-cut diamonds, between bifurcated shoulders, *diamonds approx. 6.40cts total, inner diameter 5.8cm*
£5,500 - 6,000 €6,400 - 7,000



2

1

5

3

4

6

7

8

10

9

11

12

13^Y≈

Two pairs of gold and gem-set cufflinks

1st: Each circular mother-of-pearl plaque centrally-set with a brilliant-cut diamond within a black enamel border, to a t-bar connector, mounted in 9 carat yellow gold, 2nd: Each oval plaque centrally-set with an oval cabochon ruby within a hematite border, to a t-bar connector, mounted in 18 carat yellow gold, 1st with maker's mark OL and UK hallmark, 2nd with maker's mark HJ and partial UK hallmark, plaque lengths: 1.5cm and 2.3cm (2)
£700 - 900 €810 - 1,000

14[≈]

A ruby and diamond-set cigarette case, by Cartier, circa 1945

The barrel-shaped case of reeded design, terminating at each end in a flowerhead set with circular-cut rubies and brilliant-cut diamonds, to a calibr -cut ruby thumbpiece, diamonds approx. 0.50ct total, signed Cartier Paris, maker's marks, numbered, French assay marks, length 11.8cm
£5,000 - 6,000 €5,800 - 7,000

15

A pair of gold cufflinks

Double-sided: the two 18 carat yellow gold oval plaques, connected by trace-link chain, maker's mark CG&S, partial UK hallmark, plaque length 2.0cm
£500 - 700 €580 - 810

16[≈]

A gold and gem-set compact, by Cartier, 1936

The 9 carat yellow gold lid with diamond and gem-set applied motifs, including a tapered baguette-cut ruby and square-cut diamond-set horseshoe, and a single and step-cut diamond-set rooster, signed Cartier London, maker's mark JC, numbered, London hallmark, two motifs deficient, mirror broken, length 7.7cm, fitted pouch
£1,800 - 2,200 €2,100 - 2,600

17

Two early 20th century enamel and diamond Royal Artillery brooches

1st: The king's crown set with rose-cut diamonds and red enamel detail, surmounting a field gun with similarly-cut diamonds to a green guilloch  enamel scalloped border and a scrolled blue enamel ribbon inscribed with the motto 'Ubique, quo fas et gloria ducunt', 2nd: Modelled as a flaming grenade pav -set with single-cut diamonds, above a blue enamel banner bearing the motto 'Ubique', 2nd: single-cut diamonds approx. 0.90ct total, lengths: 1st 4.0cm, 2nd 2.8cm (2)
£800 - 1,200 €930 - 1,400

18^Ω

An art deco gold and diamond-set compact, by Asprey & Co, 1936

The 9 carat yellow textured gold rectangular compact, with two single-cut diamond clasps opening to reveal two polished compartments, one with a mirrored lid, maker's mark A&Co Ltd, London hallmark, length 7.8cm, maker's case
£1,500 - 2,000 €1,700 - 2,300

19[≈]

A pair of ruby and paste cufflinks

Double-sided: each 18 carat gold oval plaque inset with a circular-cut ruby or paste within an engraved star motif, to a chain-link connector, maker's mark LW&G, London hallmark, plaque length 2.0cm
£500 - 700 €580 - 810

20

An enamel and onyx-set miniature compact, by Cartier, circa 1925

Of circular and polished design, decorated with four black and white enamel geometric borders, the circular cabochon onyx clasp opening to reveal a mirrored lid, signed Cartier Paris Londres New York, maker's mark HL, numbered, French assay marks, diameter 4.8cm
£1,000 - 1,500 €1,200 - 1,700



13



14



16



15



17



18



20



19



21

21
A single-strand cultured pearl necklace
The graduated row of 12.5mm-15.8mm
cultured pearls, to a concealed clasp,
length 91.5cm
£4,000 - 6,000 €4,600 - 7,000



22

22
A pair of cultured pearl and diamond
pendent earclips
Each openwork cartouche set with brilliant
and single-cut diamonds, suspending
a detachable oval 11.2mm or 12.1mm
cultured pearl of either cream or black tint
capped by single-cut diamonds, *diamonds*
approx. 3.50cts total, length 6.8cm
£1,200 - 1,500 €1,400 - 1,700



23



24



25



26

23
 A diamond single-stone ring
 The raised brilliant-cut diamond, between similarly-cut diamond shoulders, *principal diamond approx. 2.85cts, remaining diamonds approx. 0.60ct total, ring size I*
 £6,000 - 8,000 €7,000 - 9,300

24
 A diamond three-stone ring
 Set with three brilliant-cut diamonds, the largest to the centre, *diamonds approx. 1.75cts total, ring size P½*
 £1,000 - 1,500 €1,200 - 1,700

25
 A diamond three-stone ring
 The three brilliant-cut diamonds, slightly graduating from the centre, *diamonds approx. 2.20cts total, ring size K½*
 £2,500 - 3,500 €2,900 - 4,100

26^Ω
 A diamond rose brooch
 The flower in bloom pavé-set throughout with brilliant-cut diamonds, the stem set with baguette-cut diamonds, *diamonds approx. 5.35cts total, French assay marks, length 5.5cm*
 £3,000 - 4,000 €3,500 - 4,600

27

A gem-set bird brooch, circa 1955

Realistically modelled as a bird perched on a branch, the head highlighted with circular-cut sapphire eyes, the body covered with textured feathers, *length 6.5cm*

£1,500 - 2,000 €1,700 - 2,300

28

A gem-set zodiac pendant, by Cartier, 1975

The 18 carat yellow gold plaque carved to depict the Cancer sign, the eyes set with oval cabochon emeralds, accented by a single-cut diamond-set symbol, *signed Cartier London, maker's mark JC, London hallmark, length 6.3cm*

£800 - 1,200 €930 - 1,400

29

An opal, sapphire and emerald ring, by Buccellati

Of bi-coloured design, the oval cabochon opal, to a wide pierced band of floral design set with circular-cut sapphires and emeralds, *signed Buccellati, one emerald deficient, ring size M (leading edge)*

£800 - 1,200 €930 - 1,400

30

An emerald-set ring, by Cartier, 1995

Of crossover design, terminating to the front with two oval-cut emeralds, *signed Cartier, maker's mark LMD, numbered, French assay mark, ring size L*

£500 - 700 €580 - 810

Accompanied by a Cartier certificate of authenticity, dated 6th February 1996.

31[~]

A gem-set clip brooch

Modelled as a stylised female portrait, the face set with an oval faceted chalcedony, accented with marquise cabochon turquoise eyes and polished lips, the hair highlighted with circular-cut rubies, sapphires, emerald and a single-cut diamond, *maker's marks S Cie flanking a tower, French assay marks, length 3.6cm*

£1,500 - 2,000 €1,700 - 2,300

32

An emerald and diamond cluster ring, by Garrard

The oval cabochon emerald, within a brilliant-cut diamond surround, between fleur-de-lys shoulders, to an 18 carat yellow gold hoop, *diamonds approx. 1.10cts total, maker's mark G&Co, London hallmark, ring size P*

£1,500 - 2,000 €1,700 - 2,300

33

A diamond single-stone ring

The cushion-shaped diamond, within an 18 carat yellow gold reeded mount, *diamond approx. 1.40cts total, London hallmark, ring size Q½*

£1,500 - 2,000 €1,700 - 2,300

34[~]

A pair of jade earstuds

Each circular cabochon jade, within a four claw-setting, *length 1.2cm*

£700 - 900 €810 - 1,000

Accompanied by a report from The Gem & Pearl Laboratory stating that the jadeite jade shows no evidence of treatment. Report number 07838, dated 29th May 2013.

35

A turquoise fancy-link bracelet

Designed as a continuous row of circlets, each set with a circular cabochon turquoise and two polished beads, between fancy-link chain borders, *maker's mark HG, length 18.5cm*

£800 - 1,200 €930 - 1,400

36

An emerald and diamond cluster ring

The circular-cut emerald within a brilliant-cut diamond border, *diamonds approx. 0.40ct total, maker's mark, London hallmark, ring size M*

£1,000 - 1,500 €1,200 - 1,700

37

A malachite and diamond-set gold watch, by Bueche-Girod, 1970

The oval malachite dial within a baguette-cut diamond-set bezel, to a highly articulated 18 carat yellow gold textured oval-link bracelet, *diamonds approx. 0.45ct total, dial and movement signed Bueche-Girod, bracelet with maker's mark RCK, bracelet and back of case with London hallmark, damage to malachite, length 18.4cm*

£1,000 - 1,500 €1,200 - 1,700

38

A diamond single-stone ring

The old brilliant-cut diamond, within an eight double-claw setting, *diamond approx. 1.85cts, ring size N*

£2,000 - 3,000 €2,300 - 3,500

39[~]

A jade bird brooch

The jade plaque carved to depict a stylised singing cockerel, *length 4.0cm*

£1,000 - 1,500 €1,200 - 1,700

Accompanied by a report from The Gem & Pearl Laboratory stating that no evidence of treatment was observed to the jadeite jade. Report number 06857, dated 9th December 2012.

40

An opal and diamond dress ring

The rectangular cabochon opal, between bifurcated shoulders set with brilliant-cut diamonds, to an 18 carat yellow gold band, *maker's mark R&C, partial UK hallmark, ring size Q*

£1,500 - 2,000 €1,700 - 2,300

41*

An emerald and diamond dress ring circa 1870-1880

The navette-shaped plaque, set to the centre with a step-cut emerald, within a surround of cushion-shaped diamonds, with rose-cut diamond accents, between fleur-de-lys shoulders, *cushion-shaped diamonds approx. 0.70ct total, one rose-cut diamond deficient, ring size J½ (shank split)*

£700 - 900 €810 - 1,000

42

A pair of emerald and diamond cufflinks, 1986

Each rectangular plaque, set with a row of calibré-cut emeralds between two brilliant-cut diamond lines, to a t-bar connector, mounted in 9 carat yellow gold, *diamonds approx. 0.85ct total, maker's mark CE, London hallmark, plaque length 1.9cm*

£800 - 1,200 €930 - 1,400

43[~]

A jade pendant

The carved plaque with floral and bird details, to a suspensory loop, *length 7.8cm*

£1,500 - 2,000 €1,700 - 2,300

Accompanied by a report from The Gem & Pearl Laboratory stating that no evidence of treatment was observed to the jadeite jade. Report number 08002, dated 19th June 2013.



27



28



29



30



34



33



32



31



35



40



39



38



41



36



37



42



43



- 44**
A pair of diamond earstuds
 Each old brilliant-cut diamond, centrally-set within two brilliant-cut diamond borders, *principal diamonds approx. 2.40cts total, remaining diamonds approx. 0.70ct total, diameter 1.3cm*
£10,000 - 12,000 €12,000 - 14,000
- 45**
A diamond line necklace
 The continuous row of brilliant-cut diamonds, graduating from the centre, *diamonds approx. 10.00cts total, length 44.0cm*
£4,000 - 6,000 €4,600 - 7,000
- 46**
A sapphire and diamond brooch, by Cartier
 Of floral and foliate design, the flowers set with oval-cut sapphires and marquise-cut diamonds, the leaves set with brilliant-cut diamonds, *diamonds approx. 2.70cts total, signed Cartier, numbered, length 4.9cm*
£3,000 - 5,000 €3,500 - 5,800
- 47**
A diamond single-stone ring
 The brilliant-cut diamond within a six-claw setting, between collet-set baguette-cut diamond shoulders, *principal diamond approx. 2.05cts, remaining diamonds approx. 0.50ct total, ring size M*
£3,500 - 4,500 €4,100 - 5,200
- 48**
A diamond crossover ring
 Obliquely-set with brilliant-cut diamonds, between single-cut diamond shoulders, *diamonds approx. 1.50cts total, ring size M*
£1,500 - 2,000 €1,700 - 2,300
- 49**
A sapphire and diamond cross pendant necklace
 Set with baguette-cut sapphires, to a central princess-cut diamond, suspended from a brilliant-cut diamond surmount, to an 18 carat white gold palmier-link chain, *European convention mark, partial UK hallmark, lengths: pendant 3.8cm, chain 45.7cm*
£700 - 900 €810 - 1,000
- 50**
A sapphire and diamond floral brooch
 Of cascading and tiered design, set throughout with oval-cut and pear-shaped sapphires and brilliant and marquise-cut diamonds, *diamonds approx. 4.85cts total, length 6.1cm*
£2,000 - 2,500 €2,300 - 2,900
- 51***
A diamond single-stone ring
 The old brilliant-cut diamond, between tiered baguette-cut diamond shoulders, *principal diamond approx. 1.55cts, maker's mark L.W&G, ring size N*
£2,500 - 3,000 €2,900 - 3,500
- 52**
A sapphire and diamond ring
 The cushion-shaped sapphire in a six claw-setting, between single-cut diamond shoulders, *ring size N*
£600 - 800 €700 - 930
- 53**
A pair of diamond earstuds
 Each brilliant-cut diamond, within an 18 carat white gold mount, *diamonds approx. 1.00ct total, UK hallmark, European convention mark*
£800 - 1,200 €930 - 1,400
- 54**
A diamond line bracelet
 The uniform row of collet-set brilliant-cut diamonds, mounted in 18 carat white gold, *diamonds approx. 2.40cts, partial UK hallmark, length 17.7cm*
£800 - 1,200 €930 - 1,400
- 55**
A pair of diamond cluster earclips
 Each set throughout with brilliant-cut diamonds, the largest to the centre, *diamonds approx. 1.60cts total, length 1.2cm*
£1,000 - 1,500 €1,200 - 1,700
- 56**
A diamond and sapphire ring
 The oval-cut diamond, within a brilliant-cut diamond and circular-cut sapphire surround, between similarly-cut diamond shoulders, to a platinum band, *principal diamond approx. 0.40ct, London hallmark, ring size G*
£1,000 - 1,500 €1,200 - 1,700
- The ring was a gift from a Royal Naval officer and contains two hidden 'porthole' diamonds at the 'bow' and 'stern'.
- 57**
A pair of sapphire-set cufflinks
 Double-sided: Of rectangular and textured design, each side embellished with a circular-cut sapphire, *length 1.9cm*
£600 - 800 €700 - 930
- 58**
A sapphire and diamond dress ring
 The oval mixed-cut purplish blue sapphire, within a raised surround accented by tapered baguette-cut diamonds, *diamonds approx. 1.05cts total, approximate ring size P*
£700 - 900 €810 - 1,000
- 59**
A diamond three-stone ring
 The three brilliant-cut diamonds, slightly graduating from the centre, *diamonds approx. 1.40cts total, ring size K*
£1,500 - 2,000 €1,700 - 2,300
- 60**
A diamond single-stone ring
 The old brilliant-cut diamond, within a six-claw setting, between trios of single-cut diamonds, *principal diamond approx. 1.45cts, ring size M½*
£1,500 - 2,000 €1,700 - 2,300
- 61**
A synthetic sapphire and diamond ring
 The collet-set brilliant-cut diamond, within a calibr -cut synthetic sapphire surround, between rose-cut diamond shoulders, *principal diamond approx. 0.65ct, ring size N*
£1,200 - 1,500 €1,400 - 1,700
- 62**
A diamond-set bracelet, by Boodles
 The knife-edge bar interspersed with collet-set brilliant-cut diamonds, mounted in platinum, *diamonds approx. 2.10cts total, signed Boodles, maker's mark B&D, London hallmark, length 18.0cm*
£2,400 - 2,800 €2,800 - 3,300

45



44



46



47



48



49



52



53



51



50



55



54



59



60



56



57



58



61



62



63

A fancy-link necklace, by Bulgari

Designed as a continuous row of circular and figure of eight-links, *signed Bulgari, length 47.0cm*

£1,200 - 1,800 €1,400 - 2,100

64

A diamond single-stone ring

Of bi-coloured design, the collet-set pear-shaped diamond, between trifurcated shoulders, *diamond approx. 0.95ct, ring size P½*

£1,100 - 1,300 €1,300 - 1,500

65

A 'Tubogas' collar necklace, by Bulgari

Of flattened gas-pipe design, *signed Bulgari, length 40.1cm*

£3,000 - 4,000 €3,500 - 4,600

66~

A pair of ruby, emerald and diamond cufflinks, 1978

Each 18 carat yellow gold circular plaque, centrally-set with a circular cabochon ruby, within a circular-cut emerald and brilliant-cut diamond spiral surround, to a t-bar connector, *diamonds approx. 0.90ct total, maker's mark CE, London hallmark, plaque diameter 2.3cm*

£1,200 - 1,500 €1,400 - 1,700

67

A tiger's eye, malachite and diamond necklace

The pear-shaped cabochon dyed tiger's eye within a surround of brilliant-cut diamonds, inset with a circular cabochon malachite and marquise-cut diamond eye, to a flattened curb-link chain, *diamonds approx. 1.05cts total, length 38.2cm*

£600 - 800 €700 - 930

68

An andalusite and diamond ring

The cushion mixed-cut andalusite, between cushion-shaped diamond shoulders of scrolling design, to an 18 carat yellow gold hoop, *diamonds approx. 0.30ct total, maker's mark PPS, London hallmark, ring size O*

£1,000 - 1,500 €1,200 - 1,700

69

A diamond dress ring

The step-cut diamond, within a swirling surround set with brilliant-cut diamonds, *principal diamond approx. 0.70ct, remaining diamonds approx. 0.40ct total, ring size L*

£1,200 - 1,800 €1,400 - 2,100

70

A diamond single-stone ring

The old brilliant-cut diamond within a four-claw setting, between channel-set brilliant and single-cut diamond shoulders, *principal diamond approx. 1.30cts, ring size Q½*

£2,000 - 2,500 €2,300 - 2,900

71

A coin bracelet, by Mellerio dits Meller

Composed of eleven 20 Franc coins, dating from 1810 to 1830, between cylindrical palmier chains, *signed Mellerio, numbered, French assay marks, length 21.5cm, damaged case by Mellerio Dits Meller, 9 Rue De La Paix, Paris*

£2,000 - 2,500 €2,300 - 2,900

72

A gold and diamond-set band ring, by Cartier

The 18 carat yellow gold articulated ring, set to the front with three interlaced circlets, the central one set with brilliant-cut diamonds, *signed Cartier, maker's mark JC, UK import mark, French assay mark, ring size N (leading edge)*

£1,000 - 1,500 €1,200 - 1,700

73

A pair of chrysoprase and carnelian bracelets

Each designed as a continuous row of rectangular openwork chrysoprase or carnelian plaques alternating with threaded beads, to reeded connectors, *French assay marks, damage to one bead plaque and one chrysoprase plaque, lengths: 19.2cm and 18.7cm (2)*

£1,500 - 2,000 €1,700 - 2,300

74

A diamond dress ring

Of bombé design, pavé-set to the front with brilliant and single-cut diamonds, within a border of polished tendrils, to a hoop of chevron design, *diamonds approx. 1.90cts total, ring size M½*

£800 - 1,200 €930 - 1,400

75

An enamel and diamond dress ring, by La Nouvelle Bague

The large bi-coloured band, pavé-set with brilliant-cut diamonds and a row of princess-cut diamonds, overlaid by a band of red enamel, to a tapering band, *diamonds approx. 1.25cts total, signed La Nouvelle Bague, two diamonds deficient, ring size N½ (leading edge)*

£600 - 800 €700 - 930

76~

A gold, ruby and diamond bracelet, by Kutchisnky, 1959

The wide 18 carat yellow gold openwork bracelet, highlighted to the front by circular-cut rubies and brilliant-cut diamonds, *diamonds approx. 3.30cts total, maker's mark Kld, London hallmark, length 19.5cm*

£2,400 - 2,800 €2,800 - 3,300



77[~]

A ruby and diamond brooch

Of scrolling design, set throughout with brilliant, old brilliant, single and step-cut diamonds, accented by a line of calibr -cut rubies, *diamonds approx. 1.25cts total, length 4.8cm*

£600 - 800 €700 - 930

78[~]

A single-strand pearl necklace with a ruby and diamond clasp

The continuous row of 3.6mm-5.7mm pearls, to a rectangular clasp set with alternating circular-cut rubies and cushion-shaped diamonds, *length 45.5cm*

£4,000 - 6,000 €4,600 - 7,000

Accompanied by a report from The Gem & Pearl Laboratory stating that an extensive sample of pearls was tested and found to be natural, saltwater. Report number 07908, dated 8th June 2013.

79

A diamond single-stone ring

The brilliant-cut diamond between baguette-cut diamond shoulders, *principal diamond approx. 1.05cts, ring size K½*

£2,600 - 3,000 €3,000 - 3,500

80

A garnet and diamond cluster ring, 1976

The cushion mixed-cut garnet, within a tiered brilliant-cut diamond surround, to an 18 carat white gold mount, *diamonds approx. 1.05cts total, maker's mark WB, London hallmark, ring size M½*

£800 - 1,200 €930 - 1,400

81

A diamond heart pendant necklace

The heart-shaped pendant of bomb  design pav -set with brilliant-cut diamonds, to a similarly-set suspensory hoop and a fancy-link chain sporadically spectacle-set with single-cut diamonds, *diamonds approx. 1.60cts total, length: pendant 2.8cm, chain 41.0cm*

£2,200 - 2,500 €2,600 - 2,900

82

A diamond three-stone ring

The three brilliant-cut diamonds, the largest to the centre, *diamonds approx. 2.10cts total, ring size Q½*

£1,500 - 2,000 €1,700 - 2,300

83

A pair of diamond earstuds

Each brilliant-cut diamond mounted in 18 carat white gold, *approx. 1.80cts total, maker's mark, partial UK import mark*

£2,200 - 2,500 €2,600 - 2,900

84

A diamond single-stone ring

The brilliant-cut diamond, weighing 0.78 carat, within a six-claw setting, *ring size M*

£1,200 - 1,500 €1,400 - 1,700

Accompanied by a report from AnchorCert stating that the diamond is H colour, VS1 clarity. Report number 20010019, dated 10th May 2013.

85

A diamond ring

The old brilliant-cut diamond within two brilliant-cut diamond octagonal borders, *principal diamond approx. 1.25cts, remaining diamonds approx. 0.50ct total, ring size M*

£5,000 - 6,000 €5,800 - 7,000

86[~]

A pair of ruby and diamond earclips

Each stylised crescent set throughout with brilliant-cut diamonds, highlighted by pear-shaped rubies, *diamonds approx. 3.60cts total, length 2.6cm*

£3,000 - 4,000 €3,500 - 4,600

87

A diamond single-stone ring

The brilliant-cut diamond, within an eight-claw setting, between single-cut diamond shoulders of foliate design, *principal diamond approx. 2.45cts, ring size L (leading edge)*

£6,000 - 7,000 €7,000 - 8,100

88

A diamond bracelet

Designed as a continuous row of obliquely-set panels of channel-set brilliant-cut diamonds, *diamonds approx. 6.00cts total, length 17.3cm*

£2,500 - 3,500 €2,900 - 4,100

89

A pair of diamond earstuds

Each brilliant-cut diamond, within a six-claw setting, *diamonds approx. 1.05cts total*

£600 - 800 €700 - 930

90[~]

A pair of ruby and diamond cufflinks

Each rectangular plaque set with a row of calibr -cut rubies, between two brilliant-cut diamond lines, to a t-bar connector, mounted in 18 carat white gold, *diamonds approx. 0.85ct total, maker's mark CE, London hallmark, plaque length 1.9cm*

£1,200 - 1,500 €1,400 - 1,700

91

A diamond line bracelet

Set throughout with brilliant-cut diamonds, each in individual 18 carat white gold box-settings, *diamonds approx. 3.80cts total, maker's mark MLd, London hallmark, length 19.2cm*

£2,200 - 2,600 €2,600 - 3,000

92[~]

A ruby and diamond ring

Set with trios and pairs of old brilliant-cut diamonds, alternating with cushion-shaped rubies, *diamonds approx. 1.10cts total, ring size R½*

£1,000 - 1,500 €1,200 - 1,700

93

A diamond single-stone ring and a diamond half-hoop ring

The collet-set old brilliant-cut diamond, accompanied by an interlocking half-hoop ring of chevron design, set with brilliant-cut diamonds, *principal diamond approx. 0.95ct, remaining diamonds approx. 0.30ct total, ring sizes K½ and L (2)*

£1,000 - 1,500 €1,200 - 1,700

94

A diamond spray brooch

Designed as a stylised floral spray, set throughout with graduated baguette and brilliant-cut diamonds, *diamonds approx. 9.15cts total, length 8.9cm*

£2,500 - 3,000 €2,900 - 3,500



79

78

77

80

85

83

82

81

86

84

91

87

92

88

89

94

90

93

95

A gold collar necklace and bracelet suite, circa 1985

The articulated 18 carat yellow gold graduated brink-link collar, accompanied by a bracelet en suite, *maker's mark OV, UK import marks, lengths: necklace 38.1cm, bracelet 17.4cm (2) (partially illustrated)*

£1,600 - 2,000 €1,900 - 2,300

96

A sapphire and emerald dress ring

Centrally-set with an oval mixed-cut sapphire, to a tapered band pavé-set with circular-cut sapphires and emeralds, *ring size L½*

£3,200 - 3,800 €3,700 - 4,400

97

A topaz, diamond and cultured pearl pendant necklace

The pear-shaped mixed-cut topaz, within a surround of brilliant-cut diamonds, suspended from a 3.1mm-3.4mm cultured pearl necklace, highlighted to the front with lapis lazuli beads and polished rondelles, *diamonds approx. 0.90ct total, lengths: pendant 3.5cm, necklace 45.2cm*

£1,500 - 2,000 €1,700 - 2,300

98

A diamond and aquamarine ring

The cut-cornered step-cut aquamarine, in a half collet-setting, between shoulders channel-set with brilliant-cut diamonds, *ring size L½*

£600 - 800 €700 - 930

99

A lapis lazuli and diamond bow brooch, earring and ring suite, by Van Cleef & Arpels

Designed as a tied bow set with lapis lazuli and accented with brilliant-cut diamond polka dots, pavé-set to the centre with similarly-cut diamonds, accompanied by a pair of earclips and a ring en suite, *diamonds approx. 4.00cts total, bow signed Van Cleef and Arpels and with French assay marks, bow and earrings with maker's mark VCA and Ste M, ring with maker's mark VCA, all numbered, ring with damage to lapis lazuli, lengths: bow 5.4cm, earring 2.3cm, ring size M½ (3)*

£6,500 - 7,000 €7,600 - 8,100

100

A lapis-lazuli fancy-link necklace

The flattened curb-link chain, interspersed with collet-set oval cabochon lapis lazuli, *length 42.3cm*

£1,500 - 2,000 €1,700 - 2,300

101

A pair of sapphire and diamond pendant earrings

Each line of oval cabochon sapphires, spaced by an 18 carat yellow gold post, surmounted by a brilliant-cut diamond, *London hallmark, length 5.7cm*

£600 - 800 €700 - 930

102

A diamond-set bracelet, by Tiffany & Co.

The articulated row of reeded cross-shaped links, highlighted to the front by brilliant-cut diamond rhombus-shaped connectors, *diamonds approx. 0.60ct total, maker's mark T&Co., length 18.5cm, maker's case and box*

£1,700 - 2,000 €2,000 - 2,300

103

A pair of yellow sapphire and diamond cufflinks

Each rectangular plaque set with a row of calibré-cut yellow sapphires, between two lines of brilliant-cut diamonds, *diamonds approx. 0.85ct total, plaque length 1.9cm*

£1,200 - 1,500 €1,400 - 1,700

104[~]

A gem-set bangle

The hinged bangle of polished woven design, terminating to the front with circular cabochon rubies, sapphires and emeralds, accented with single-cut diamonds, *inner diameter 5.4cm*

£1,500 - 2,000 €1,700 - 2,300

105

A sapphire and diamond three-stone ring

The cushion-shaped sapphire between similarly-shaped diamond shoulders, *diamonds approx. 1.50cts total, ring size M½ (sizing band)*

£800 - 1,200 €930 - 1,400

106

A sapphire and diamond three-stone ring

The oval-cut sapphire between cushion-shaped diamonds, to scrolling shoulders and gallery, *diamonds approx. 0.70ct total, ring size N½*

£500 - 700 €580 - 810

107

A gold bracelet, by Cartier

Composed of an articulated series of 18 carat yellow gold flattened curb-links, *signed Cartier, maker's mark JC, numbered, partial UK import mark, European convention mark, length 19.3cm, maker's case*

£1,500 - 2,000 €1,700 - 2,300

108

A blue topaz and diamond ring

The oval mixed-cut blue topaz, between brilliant-cut diamond shoulders, to an 18 carat yellow gold hoop, *maker's mark, London hallmark, ring size O½*

£600 - 800 €700 - 930



107

109

A yellow sapphire and diamond cluster ring

The oval mixed-cut yellow sapphire, within a brilliant-cut diamond border, to an 18 carat white gold hoop, *diamonds approx. 0.35ct total, maker's mark, London hallmark, ring size L*

£600 - 800 €700 - 930

110[≈]

A gem-set charm bracelet

The row of brilliant-cut diamond circlets, linked by similarly-cut diamonds of brown tint, suspending hearts and fruit set with circular-cut sapphires of blue and yellow tint, rubies and garnets, *diamonds approx. 3.50cts total, diamonds untested for natural colour, length 19.0cm*

£2,000 - 3,000 €2,300 - 3,500

111

A diamond three-stone ring

The three old brilliant-cut diamonds, the largest to the centre, to a platinum band, *diamonds approx. 2.05cts total, maker's mark FAB, UK import mark, ring size O½*

£2,000 - 3,000 €2,300 - 3,500

112

A light pink diamond and diamond pendant necklace

The cushion-shaped mixed-cut light pink diamond, weighing 0.44 carat, centrally-set within two brilliant-cut diamond borders, suspended from a similarly-cut diamond surmount, to a trace-link chain, *remaining diamonds approx. 0.55ct total, lengths: pendant 2.2cm, chain 40.4cm*

£2,000 - 3,000 €2,300 - 3,500

Accompanied by a report from GIA stating that the diamond weighing 0.44 carat is light pink natural colour. Report number 1142878648, dated 24th August 2012.

113

A diamond cluster pendant necklace

Designed as a flowerhead, set throughout with cushion-shaped diamonds, suspended from a similarly-shaped diamond surmount, to a trace-link chain, *diamonds approx. 1.85cts total, lengths: pendant 2.1cm, chain 40.7cm*

£1,800 - 2,200 €2,100 - 2,600

114

A pink sapphire and diamond ring

The step-cut pink sapphire between baguette-cut diamond shoulders, *diamonds approx. 0.35ct total, ring size M½*

£800 - 1,200 €930 - 1,400

115

A diamond five-stone ring

Set with five brilliant-cut diamonds, the largest to the centre, *diamonds approx. 1.05cts total, ring size L½*

£1,500 - 2,000 €1,700 - 2,300

116

A pink sapphire and diamond cluster ring

The collet-set circular-cut pink sapphire, within a brilliant-cut diamond border, between similarly-cut diamond shoulders, *diamonds approx. 0.30ct total, ring size M*

£600 - 800 €700 - 930

117

A diamond single-stone ring

The brilliant-cut diamond, in an eight claw-setting, *diamond approx. 1.80cts, ring size J*

£5,000 - 7,000 €5,800 - 8,100

118

A diamond three-stone ring

Set with three old brilliant-cut diamonds, the largest to the centre, *diamonds approx. 1.70cts total, ring size P½*

£1,500 - 2,000 €1,700 - 2,300

119

A diamond ring

The step-cut diamond between channel-set baguette-cut diamond shoulders, *principal diamond approx. 1.00ct, remaining diamonds approx. 0.50ct total, ring size M½*

£1,500 - 2,000 €1,700 - 2,300

120

A sapphire and diamond flower brooch, by Meister

Set throughout with baguette-cut diamonds, to rectangular-cut sapphire stamens, *signed Meister, diamonds approx. 6.20cts total, three diamonds deficient, length 8.8cm*

£2,000 - 3,000 €2,300 - 3,500

121[≈]

Three gem-set and diamond bracelets

Each designed as an articulated row of floral clusters, set with either circular-cut rubies, sapphires or emeralds and brilliant-cut diamonds, *diamonds approx. 2.90cts total, bracelet lengths 17.2cm, fitted case by Tessiers Ltd, 26 New Bond St, London (3)*

£1,800 - 2,200 €2,100 - 2,600

122

A gem-set cluster ring

The circular plaque set with various circular-cut gems including aquamarine, peridot, pink and yellow sapphire, pink and green tourmaline, *chip to peridot, ring size Q½*

£600 - 800 €700 - 930

123

A diamond cluster ring

The step-cut diamond, between two similarly-cut diamonds, within a surround of marquise-cut diamonds, *principal diamond approx. 1.20cts, remaining diamonds approx. 3.70cts total, ring size N½*

£3,000 - 4,000 €3,500 - 4,600

124

A cultured pearl and diamond flower brooch

The stylised bunch of flowers, the petals and stems set with single and baguette-cut diamonds, the pistils set with 3.3mm cultured pearls, *diamonds approx. 2.50cts total, length 6.5cm*

£1,800 - 2,200 €2,100 - 2,600

125[≈]

A ruby and diamond-set bracelet

Of herringbone textured design, centrally-set with a row of circular-cut rubies and brilliant-cut diamond highlights in individual box-settings, *length 19.0cm*

£1,800 - 2,500 €2,100 - 2,900

126

A diamond dress ring

The two raised courses of brilliant-cut diamonds, within a surround of single-cut diamonds, *diamonds approx. 1.70cts total, ring size L*

£1,000 - 1,500 €1,200 - 1,700



109

110

113

112

111

116

115

114

117

118

120

121

122

119

123

126

124

125



127

127

A fancy-link cocktail bracelet

Designed as a continuous row of large fancy-links of bi-coloured and circular design, *signed Rosas de Portugal, French import marks, length 20.7cm* (illustrated above)

£3,500 - 4,000 €4,100 - 4,600

128~

A jade and paste pendant necklace

The jade plaque carved to depict a pear in foliage, suspended from a pink paste bead surmount, to a fetter-link chain, *lengths: pendant 6.5cm, chain 48.0cm*

£3,000 - 3,500 €3,500 - 4,100

Accompanied by a report from The Gem & Pearl Laboratory stating that no evidence of treatment was observed to the jadeite jade. Report number 06944, dated 3rd January 2013.

129

A diamond five-stone ring

Channel-set to the front with five cushion-shaped diamonds, the largest to the centre, *diamonds approx. 0.90ct total, ring size N½*

£500 - 700 €580 - 810

130

A diamond-set ring, by Buccellati

Of bi-coloured design, set to the front with pierced brilliant-cut diamond quatrefoils, between scrolling borders and engraved tapered band, *diamonds approx. 0.55ct total, signed M. Buccellati Italy, ring size M½, cased by Mario Buccellati*

£3,000 - 4,000 €3,500 - 4,600

131

A torque necklace, by Buccellati

The collar of textured and bloomed design, *signed Federico Buccellati, inner diameter 10.9cm*

£1,500 - 2,000 €1,700 - 2,300

132

A diamond-set brooch

The stylised rosace of openwork design set throughout with old brilliant and brilliant-cut diamonds, within a scalloped frame, *diamonds approx. 2.65cts total, width 3.7cm*

£800 - 1,200 €930 - 1,400

133

An enamel and diamond ring

The brilliant-cut diamond, centrally-set within a green guilloché enamel square surround and gallery, *diamond approx. 1.70cts total, ring size K½*

£3,500 - 4,500 €4,100 - 5,200

134

An enamel and diamond flower brooch, circa 1960

Modelled as two stylised flowerheads, each stamen set with a step-cut diamond or old brilliant and brilliant-cut diamonds, within a green guilloché enamel petal surround, to textured stems, *diamonds approx. 2.35cts total, length 6.8cm*

£4,000 - 5,000 €4,600 - 5,800

135

A yellow sapphire and diamond-set ring

The large oval mixed-cut yellow sapphire in collet-setting highlighted by single-cut diamonds, to a tapering engraved hoop of foliate and scrolling design, *ring size Q (leading edge)*

£2,000 - 2,500 €2,300 - 2,900

136

A pair of ram's head earclips, by Lalaounis

Each designed as a polished scroll, terminating in a textured and beadwork ram's head, *maker's mark, length 3.6cm*

£700 - 900 €810 - 1,000

137

A pair of citrine pendent earrings

Each large citrine briolette drop with engraved cap, to a collet-set oval-cut citrine surmount, *length 7.3cm*

£700 - 900 €810 - 1,000

138

A diamond dress ring

The oval plaque pavé-set with cushion-shaped and single-cut diamonds, to a pierced gallery and polished hoop, *diamonds approx. 0.70ct total, ring size M½*

£800 - 1,200 €930 - 1,400

139

An emerald and diamond dress ring

The oval-cut emerald, within a brilliant-cut diamond bi-coloured surround of spiral design, between similarly-cut diamond bifurcated shoulders, *diamonds approx. 0.50ct total, ring size O (leading edge)*

£1,500 - 2,000 €1,700 - 2,300

140~

A gem-set beetle brooch

The body set with a large polished emerald cabochon, the head with a button cultured pearl, with circular cabochon ruby eyes and rose-cut diamond highlights, *length 4.8cm*

£1,600 - 2,000 €1,900 - 2,300

141

A diamond line bracelet

Designed as a highly articulated row of brilliant-cut diamonds, *diamonds approx. 4.10cts total, length 17.8cm*

£2,000 - 3,000 €2,300 - 3,500

142

An emerald and diamond-set bracelet

Designed as a continuous row of openwork rectangular plaques of textured design, each centrally-set with a step-cut emerald between two brilliant-cut diamond highlights, *diamonds approx. 0.50ct total, length 17.7cm*

£1,500 - 1,800 €1,700 - 2,100

143

A fancy-link bracelet

The bi-coloured articulated bracelet of geometric and textured design, accented throughout with engraved floral details, *length 19.5cm*

£1,400 - 1,800 €1,600 - 2,100



128



129



130



132

131



134



133



136



135



139



138



137



140

141



142



143

144

A mesh necklace

Designed as a continuous row of stylised flowerheads with pyramidal details, *length 45.5cm*

£1,000 - 1,500 €1,200 - 1,700

145[~]

A gold and gem-set 'Regard' pendant, circa 1830

The circular panel, centrally-set with circular-cut rubies, emeralds, garnets, amethysts and an old brilliant-cut diamond, each gemstone spelling 'REGARD', within a similarly-cut chrysoberyl and amethyst border and suspensory loop, decorated with cannetille detail, a glazed compartment on reverse with hairwork, *length 3.6cm, fitted case by Spink & Son, 1&2 Gracechurch St., London E.C*

£800 - 1,200 €930 - 1,400

146

A seed pearl and tourmaline brooch/pendant

The rectangular mixed-cut brownish pink tourmaline centrally-set within a seed pearl oval plaque of floral design, suspending a cushion mixed-cut brownish pink tourmaline highlighted by three collet-set seed pearls, *length 5.5cm*

£1,400 - 1,800 €1,600 - 2,100

147

A citrine brooch, two citrine clips and two citrine rings, first half of 19th century

1st: The navette-shaped cartouche centrally-set with an octagonal-shaped citrine within a gold repoussé surround, suspending a detachable similarly-set pear-shaped citrine terminating in a later pendant, 2nd: Each pear-shaped citrine within a gold repoussé surround, 3rd: Set with two oval-cut citrines, 4th: Collet-set with a pear-shaped citrine, *composite, lengths: 1st 9.5cm, 2nd 4.9cm, 3rd ring size K, 4th ring size H (5)*

£2,000 - 3,000 €2,300 - 3,500

148

A pair of seed pearl and amethyst pendent earrings, circa 1900

Each oval-cut amethyst and seed pearl cluster, suspending a line of mixed-cut amethysts and seed pearls, to a briolette-cut amethyst drop, within an openwork surround of seed pearls, *later post fittings, length 7.4cm*

£700 - 900 €810 - 1,000

149

A mid 18th century amethyst and diamond ring

The foiled oval-cut amethyst between rose-cut diamond shoulders, in closed-back settings, the reverse engraved with a flower, to a tiered hoop, mounted in silver and gold, *ring size K½*

£1,500 - 2,000 €1,700 - 2,300

150

A three-strand pearl necklace

The three rows of graduating 2.4mm-5.2mm pearls, to a green and colourless circular-cut paste clasp, *length of shortest strand 43.0cm*

£1,500 - 2,000 €1,700 - 2,300

Accompanied by a report from The Gem & Pearl Laboratory stating that an extensive sample of pearls was tested and found to be natural, saltwater. Report number 08017, dated 21st June 2013.

151

Three late 19th century garnet bracelets, a garnet brooch and two garnet pendants

1st: Each bracelet centrally-set with a cartouche-shaped link set with a cabochon garnet, one accented by seed pearls, 2nd: The brooch designed as a scrolling cartouche centrally-set with a cabochon garnet suspending a detachable similarly-set pear-shaped pendant, 3rd: The two pendants of stylised figure of eight design set with a pear-shaped cabochon garnet, all in closed-back settings, *lengths: 1st: 17.4cm, 16.6cm, 18.2 2nd: 5.8cm, 3rd: 5.9cm, 6.0cm (6)*

£1,200 - 1,500 €1,400 - 1,700

144



146



147



145



148



149



150



151



152

A 'Cicliadi' pendant necklace, by Bulgari

Designed as a cluster of polished overlapping and rotating discs, to a belcher-link chain, *signed Bulgari, lengths: pendant 5.4cm, chain 45.0cm*

£1,000 - 1,500 €1,200 - 1,700

153[~]

A ruby and diamond dress ring

Of tapered and pierced design, each brilliant-cut diamond cross motif, centrally-set with a circular-cut ruby, *diamonds approx. 0.35ct total, ring size M*

£1,000 - 1,500 €1,200 - 1,700

154

A two-strand cultured pearl necklace

The rows of slightly graduating 7.8mm-8.2mm cultured pearls, to a polished circlet clasp, *length of shortest strand 60.7cm*

£1,800 - 2,200 €2,100 - 2,600

155

A pair of diamond-set earrings, by Bulgari

Each designed as two opposing heart motifs highlighted with brilliant-cut diamonds, *diamonds approx. 0.35ct total, signed Bulgari, length 2.5cm*

£1,200 - 1,500 €1,400 - 1,700

156

A diamond-set pendant necklace

The pierced hololith set throughout with graduated brilliant-cut diamonds, to a fancy-link chain, *diamonds approx. 0.70ct total, maker's mark KRN, lengths: pendant 1.8cm, chain 45.0cm*

£600 - 800 €700 - 930

157

A diamond eternity ring

The continuous row of brilliant-cut diamonds, each within a four-claw setting, *diamonds approx. 3.25cts total, ring size M*

£2,200 - 2,800 €2,600 - 3,300

158[~]

A ruby and diamond brooch

Of abstract design, the oval-cut ruby, within a spiral of graduated brilliant-cut diamonds, *diamonds approx. 8.60cts total, width 3.7cm*

£4,000 - 5,000 €4,600 - 5,800

159

A diamond dress ring

Of bombé design, pavé-set with brilliant-cut diamonds, accented by swirls of tapered baguette-cut diamonds, *diamonds approx. 2.80cts total, ring size N*

£1,500 - 2,500 €1,700 - 2,900

160

A pair of cultured pearl and diamond pendent earrings

Each line of single-cut diamonds, terminating in an 11.7mm cultured pearl of grey tint, *diamonds approx. 1.00ct total, length 9.4cm*

£500 - 600 €580 - 700

161

A gem-set and diamond dress ring, by Ambrosi

Of bombé design, pavé-set with brilliant-cut diamonds, between undulating carved cabochon onyx and rock crystal, *diamonds approx. 3.00cts, signed Ambrosi, ring size L*

£2,000 - 2,500 €2,300 - 2,900

162

A pair of diamond earstuds

Each brilliant-cut diamond, mounted in 18 carat white gold, *diamonds approx. 1.60cts total, partial UK hallmark, European convention mark*

£2,500 - 3,500 €2,900 - 4,100

163^Y[~]

A coral, ruby and diamond dress ring

The marquise cabochon coral *corallium rubrum*, collet-set between circular-cut rubies and brilliant-cut diamond-set tapered shoulders, *diamonds approx. 0.40ct total, ring size J*

£700 - 800 €810 - 930

164

A diamond ring

The raised brilliant-cut diamond, to a tapering band pavé-set with similarly and single-cut diamonds, *principal diamond approx. 1.05cts, remaining diamonds approx. 0.80ct total, ring size M½*

£1,200 - 1,500 €1,400 - 1,700

165

A diamond-set fancy-link bracelet

Designed as a continuous row of textured brick-links, accented with brilliant-cut diamonds, *diamonds approx. 1.00ct total, length 18.8cm*

£1,500 - 2,000 €1,700 - 2,300

166[~]

A ruby and diamond dress ring

Of bi-coloured and pierced design, set with raised oval-cut rubies, within a brilliant-cut diamond-set surround, *diamonds approx. 0.80ct total, ring sizes O (leading edge)*

£1,500 - 2,000 €1,700 - 2,300

167

A diamond-set wristwatch, by Piaget

The rectangular dial, highlighted with two rows of single-cut diamonds, to a bi-coloured articulated bracelet strap, *signed Piaget, maker's mark P, numbered, additional links provided, length 17.1cm*

£1,200 - 1,500 €1,400 - 1,700

168

A diamond-set hinged bangle

Gypsy-set to the front with brilliant-cut diamonds, mounted in 18 carat white gold, *diamonds approx. 0.45ct total, UK import mark, inner diameter 6.0cm*

£600 - 800 €700 - 930

169

A pair of rock crystal and diamond earclips, by Capello, circa 1985

Each rectangular plaque set with alternating diagonal courses of baguette-cut diamonds and rock crystal plaques, *diamonds approx. 2.90cts total, signed Capello, length 3.1cm (illustrated inside the back cover)*

£2,500 - 3,500 €2,900 - 4,100

170

A diamond line bracelet

Designed as a row of brilliant-cut diamonds, each in a four claw-setting, mounted in 18 carat white gold, *diamonds approx. 2.45cts total, maker's mark BJB, partial UK hallmark, European convention mark, length 18.6cm*

£800 - 1,000 €930 - 1,200



152



153



154



155



156



157



160



159



158



163



162



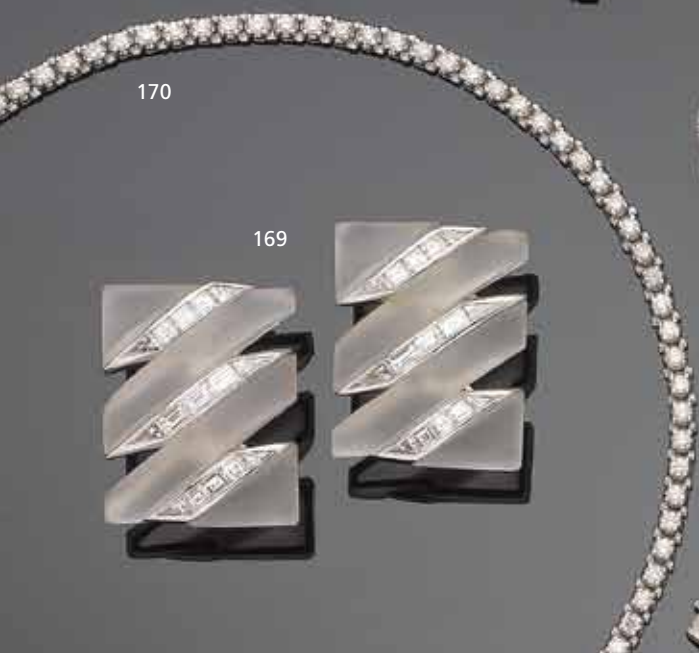
166



164



161



170

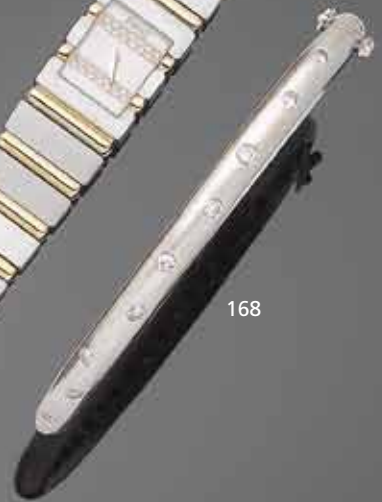


169



165

167



168

171

A sapphire-set necklace, circa 1955

The articulated series of graduated textured birch leaves, each set with a circular-cut sapphire, *maker's mark BR, length 42.5cm*
£700 - 1,000 €810 - 1,200

172

A sapphire-set ring, by Cartier, 1995

Of crossover design, terminating to the front with two collet-set oval-cut sapphires, *signed Cartier, numbered, French assay mark, ring size L½*
£500 - 700 €580 - 810

Accompanied by a Cartier certificate of authenticity, dated 6th February 1996.

173

A diamond three-stone ring

Set with three brilliant-cut diamonds, to an 18 carat yellow gold band, *diamonds approx. 1.50cts total, maker's mark EF, London hallmark, ring size L*
£1,000 - 1,500 €1,200 - 1,700

174

A diamond-set necklace, bracelet and earring suite

Of bi-coloured design, the two 18 carat yellow gold strands connected at intervals by figure of eight-links, accented with single-cut diamonds, accompanied by a bracelet and a pair of earrings en suite, *necklace with London hallmark, lengths: necklace 41.4cm, bracelet 18.2cm, earring 2.6cm (3)*
£1,200 - 1,500 €1,400 - 1,700

175

A diamond dress ring

The three rows of old brilliant-cut diamonds, to a trifurcated band, *diamonds approx. 2.95cts total, ring size J*
£1,400 - 1,800 €1,600 - 2,100

176

A tanzanite and diamond dress ring

The oval mixed-cut tanzanite, between brilliant-cut diamond shoulders, *diamonds approx. 1.00ct total, signed Hubert, ring size N½*
£2,000 - 3,000 €2,300 - 3,500

177*

Two diamond-set rings

1st: Set with five graduated cushion-shaped diamonds, 2nd: Of bi-coloured design, set with three graduated cushion-shaped diamonds, *diamonds approx. 1.55cts total, ring sizes: 1st M½, 2nd K (2)*
£1,000 - 1,500 €1,200 - 1,700

178

An opal, tanzanite and diamond dress ring

The oval cabochon opal, within an undulating border of brilliant-cut diamonds, to a further surround of oval cabochon tanzanites, highlighted with brilliant-cut diamonds, *ring size M*
£1,200 - 1,500 €1,400 - 1,700

179

A pair of sapphire and diamond floral earclips, by Vourakis

The central cluster of circular-cut sapphires, within a surround of unfurling petals set with brilliant-cut diamonds, *diamonds approx. 4.20cts total, signed Vourakis, length 3.4cm*
£3,000 - 4,000 €3,500 - 4,600

180

A cigarette case

The curved and polished case, decorated with a cabochon sapphire thumbpiece, *length 9.3cm*
£1,800 - 2,200 €2,100 - 2,600

181

A lapis lazuli bangle

The articulated reeded bangle, set to the front with a quatrefoil motif of lapis lazuli beads, *inner diameter 5.8cm*
£500 - 600 €580 - 700

182

A fancy-link bracelet

Composed of flattened foxtail-links, *maker's mark HP, length 18.7cm*
£800 - 1,200 €930 - 1,400

183

An enamel and diamond bracelet

Composed of a series of articulated panels of flowerhead clusters, with blue and yellow enamel petals and single-cut diamond stamens, *diamonds approx. 0.40ct total, one flowerhead deficient, length 19.2cm*
£600 - 800 €700 - 930

184

A sapphire-set hinged bangle

Of textured undulating design, sporadically collet-set with circular-cut sapphires, *maker's mark CB, inner diameter 6.5cm*
£1,400 - 1,800 €1,600 - 2,100

172



173



174



177



176



175



174

178



171



182



179



183



180



184



181



185

An early 20th century sapphire and diamond-set evening bag

The woven mesh-link evening bag, suspended from a cable-link handle, the hinged frame set with old brilliant-cut diamonds interspersed with square-cut sapphires, *diamonds approx. 0.50ct total, length 10.0cm*

£2,800 - 3,200 €3,300 - 3,700

186

An art nouveau emerald and diamond dress ring, circa 1900

The stylised textured pear-shaped plaque, set with a pear-shaped emerald and graduating rose-cut diamonds in closed-back settings, to scrolling shoulders, *ring size O*

£1,600 - 2,000 €1,900 - 2,300

187

A citrine necklace

Designed as a continuous row of faceted citrine beads, interspersed by reeded beads, suspending two similarly-set larger citrines, *length 108.0cm*

£700 - 800 €810 - 930

By repute, this necklace belonged to the Grimani family who were a prominent Venetian family which included 3 Doges of Venice.

188

A collection of five art nouveau gem-set and enamel pendants and brooch, circa 1905

1st: The triangular plaque depicting the portrait of a lady in polychrome enamel, within a scrolling openwork frame, 2nd: The hexagonal plaque engraved to depict the portrait of a lady with mistletoe in her hair and to the reverse, inscribed VELLEDA, 3rd: The pansy overlaid by the portrait of a lady within an openwork frame, 4th: The engraved pansy overlaid with the portrait of a lady, gypsy-set with circular-cut blue, red and colourless paste, 5th: The undulating circular plaque depicting the portrait of a lady in polychrome enamel highlighted by a circular-cut paste, *1st: signed Clément, Limoges, 2nd: signed Vernier, lengths: 4.8cm, 3.0cm, 3.3cm, 3.3cm and 2.3cm (5)*

£2,000 - 2,500 €2,300 - 2,900

189

A gold bracelet, 1971

The 9 carat yellow gold curb-link chain, engraved with foliate detail, to a similarly engraved padlock clasp, *maker's mark PJ, UK hallmarks, length 19.8cm*

£1,000 - 1,500 €1,200 - 1,700

190[~]

A jade bracelet

Designed as continuous row of oval cabochon jade of white, light brown, lilac, orange/brown, green and grey/black tint, *length 19.2cm*

£500 - 700 €580 - 810

Accompanied by a report from The Gem & Pearl Laboratory, stating that no evidence of treatment was observed to the white, lilac and green jade, and that the light brown, orange/brown and grey/black jades were dyed. Report number 08001, dated 19th June 2013.

191^{*}

An early 20th century sapphire and diamond-set evening bag and purse

The finely woven mesh-link bag, to a pierced frame of floral and foliate design highlighted with alternating oval cabochon sapphires and cushion-shaped diamonds, to a fancy-link chain, opening to reveal a smaller purse of similar design, *diamonds approx. 0.80ct total, lengths 12.8cm and 8.1cm, chain 30.0cm (2)*

£2,200 - 2,500 €2,600 - 2,900



185



186



187



190



188



191



189

192[≈]

A cultured pearl, ruby, sapphire and diamond bracelet

The four rows of 8.2mm-9.3mm cultured pearls, to a clasp of scrolling design composed of two rows of oval and circular-cut rubies and sapphires, highlighted with baguette and single-cut diamonds and baguette-cut rubies, *diamonds approx. 0.95ct total, length 19.4cm*
£2,500 - 3,500 €2,900 - 4,100

193

A diamond single-stone ring

The raised brilliant-cut diamond, within a six-claw setting, between pierced shoulders of foliate design, *diamond approx. 2.05cts, ring size O*
£3,500 - 4,000 €4,100 - 4,600

194

A sapphire and diamond cluster ring

Centrally-set with a circular cabochon sapphire, within a brilliant-cut diamond surround, between two tapered baguette-cut diamonds, *diamonds approx. 1.30cts total, partial French assay mark, ring size K½*
£6,000 - 8,000 €7,000 - 9,300

195

A cultured pearl and diamond cluster ring

The 11.9mm cultured pearl within a brilliant-cut diamond border, to an 18 carat yellow gold hoop, *diamonds approx. 1.10cts total, maker's mark BH, London hallmark, ring size O*
£700 - 900 €810 - 1,000

196

A sapphire and diamond double-clip brooch

Of geometric scrolling design, each clip set with circular-cut sapphires, brilliant and baguette-cut diamonds, *diamonds approx. 5.35cts total, brooch fitting split, length 6.4cm*
£4,000 - 5,000 €4,600 - 5,800

197

A sapphire and diamond dress ring

The circular cabochon sapphire, collet-set within an openwork rectangular plaque set with brilliant and single-cut diamonds, *diamonds approx. 0.70ct total, ring size N*
£800 - 1,000 €930 - 1,200

198

A pair of sapphire and diamond earrings

Each curved earring collet-set to the centre with a circular-cut sapphire, within a surround of pavé-set brilliant-cut diamonds, *diamonds approx. 2.80cts total, length 2.0cm*
£800 - 1,000 €930 - 1,200

199

A sapphire and diamond ring

The oval-cut sapphire, weighing 5.06 carats, within a brilliant-cut diamond surround, *diamonds approx. 1.20cts total, one claw deficient, ring size O*
£2,000 - 2,500 €2,300 - 2,900

Accompanied by a report from CISGEM, stating that the sapphire is of natural origin. Report number 80966, dated 21st May 2013.

200

A pair of diamond-set drop earrings

Each sphere pavé-set with brilliant-cut diamonds, to a polished suspensory loop, *diamonds approx. 4.75cts total, length 3.1cm*
£600 - 800 €700 - 930

201

A pair of diamond cluster earstuds

Each brilliant-cut diamond, within a four-claw setting, to a similarly-cut diamond surround, *diamonds approx. 2.00cts total*
£4,000 - 5,000 €4,600 - 5,800

202

A sapphire and diamond dress ring

Set to the front with marquise-cut sapphire rows, highlighted by brilliant-cut diamonds, to trifurcated shoulders and a tapering band, *diamonds approx. 0.90ct total, ring size N½*
£800 - 1,000 €930 - 1,200

203

A diamond line bracelet

Designed as a row of brilliant-cut diamonds in half collet-settings, *diamonds approx. 3.90cts total, length 18.4cm*
£1,200 - 1,800 €1,400 - 2,100

204

A wristwatch, by Piaget

The square dial with dot hour markers, to a tapering bracelet of articulated bi-coloured links, *signed Piaget, maker's mark P, numbered, additional links provided, length 19.2cm*
£2,000 - 3,000 €2,300 - 3,500

205

An aquamarine and diamond bracelet, pendant and ring suite

The bracelet designed as a continuous row of circular-cut aquamarine and single-cut diamond clusters, alternating with circular polished links, accompanied by a pendant and ring of similar design, *diamonds approx. 1.50cts total, lengths: bracelet 18.5cm, pendant 2.5cm, ring size N (3)*
£800 - 1,000 €930 - 1,200

206

A diamond line bracelet

Designed as a continuous row of brilliant-cut diamonds, each within a four-claw setting, *diamonds approx. 4.60cts total, length 17.7cm*
£2,000 - 3,000 €2,300 - 3,500

207

A turquoise and diamond brooch

Designed as a wreath, set throughout with old brilliant-cut diamonds, accented with oval cabochon turquoise buds, decorated with a stylised bow terminating in similarly-cut turquoise drops, *diamonds approx. 0.60ct total, length 4.6cm*
£700 - 900 €810 - 1,000

208

A diamond single-stone ring

The cushion-shaped diamond, within a six-claw setting, *diamond approx. 1.00ct, ring size M*
£1,000 - 1,500 €1,200 - 1,700

192



194



193



195



196



197



199



198



201



200



202



203



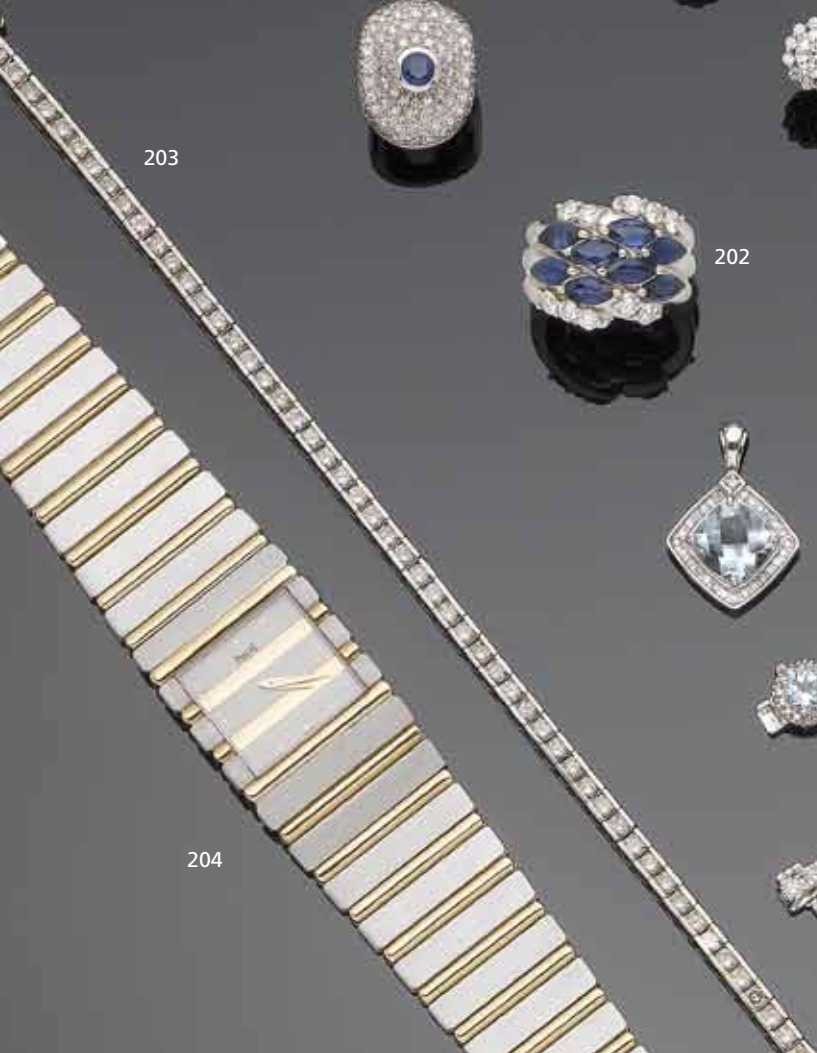
205



206



204



208



207



209



209

A gem-set ring and earclip suite

The ring centrally-set with a step-cut amethyst, flanked by triangular cabochon chrysoprase, accompanied by a pair of earclips of similar design, highlighted with a heart-shaped citrine, *ring size M½, earclip length 2.2cm (2) (illustrated above)*

£2,800 - 3,200 €3,300 - 3,700

210

A diamond-set necklace

Composed of a series of flattened curb-links, interspersed with five clusters of single-cut diamonds, *diamonds approx. 0.85ct total, length 43.5cm*

£2,000 - 2,500 €2,300 - 2,900

211

A pair of tourmaline and diamond earclips

Each carved tourmaline of foliate design, within a brilliant-cut diamond surround, *diamonds approx. 0.95ct total, length 3.8cm*

£1,600 - 2,000 €1,900 - 2,300

212

A tourmaline and diamond pendent necklace

The carved watermelon tourmaline depicting a butterfly, highlighted with brilliant and single-cut diamonds, suspended from a polished collar, *diamonds approx. 0.45ct total, maker's mark JUD, pendant length: 4.5cm, collar inner diameter 12.0cm*

£600 - 800 €700 - 930

213

A single-strand cultured pearl necklace

The row of 7.2mm-7.9mm baroque cultured pearls, to an abstract circular clasp, *length 48.1cm, cased by John Donald*

£600 - 800 €700 - 930

By repute this necklace was purchased at John Donald in April 2000.

214

No Lot

215

A gem-set dress ring

Set to the front with kite-shaped cabochon tourmalines and amethysts, to a tapering band, *ring size O*

£1,200 - 1,500 €1,400 - 1,700

216

A pair of citrine and diamond earrings

Each faceted oval citrine, within an undulating surround of single-cut diamonds, suspended from a similarly-set half sphere, *diamonds approx. 1.45cts total, length 4.5cm*

£500 - 600 €580 - 700

217

A spray brooch, earclip and ring suite

The brooch of bi-coloured stylised crescents, accompanied by a pair of earclips and a ring en suite, *lengths: brooch 5.1cm, earclip 3.0, ring size R½ (3) (partially illustrated)*

£900 - 1,100 €1,000 - 1,300

218

A cultured pearl necklace, ring and earring suite

The necklace designed as a continuous row of 12.0mm cultured pearls of dark green and grey tints, accompanied by a brilliant-cut diamond and 13.8mm cultured pearl dress ring and a pair of 11.4mm cultured pearl earstuds en suite, *diamonds approx. 0.50ct total, lengths: necklace 45.0cm, ring size N (3)*

£1,200 - 1,500 €1,400 - 1,700

219

A diamond-set necklace

Collet-set to the centre with a brilliant-cut diamond, to a bi-coloured necklace of woven design, *diamond approx. 0.35ct, length 45.5cm*

£1,000 - 1,500 €1,200 - 1,700

220

A pink tourmaline dress ring

The collet-set heart-shaped pink tourmaline, within a reeded mount, *maker's mark AV, French assay mark, ring size I½*

£900 - 1,100 €1,000 - 1,300

221

A fancy-link bracelet

Composed of alternating polished hoops and rondelles of matt finish, *maker's mark KSA, length 20.5cm*

£600 - 800 €700 - 930

222

A gold and diamond bangle

The 18 carat yellow gold hinged bangle of undulating design, set to the front with princess-cut diamonds, *diamonds 2.35cts total, maker's mark SB-D, London hallmark, inner diameter 5.9cm*

£1,000 - 1,500 €1,200 - 1,700



211



210



212



No lot



215



213



216



217



220



219



218



221



222



223

223
A fancy-link bracelet

The wide articulated bracelet designed as a continuous row of chevron-shaped fancy links, *length 19.5cm* (illustrated above)
£1,000 - 1,500 €1,200 - 1,700

224[~]
A gem-set and diamond pendant necklace

Designed as two stylised birds with single-cut diamond wings, highlighted with circular-cut and circular cabochon rubies, suspending a collet-set pear-shaped garnet drop, to a fancy-link chain, *diamonds approx. 0.40ct total, lengths: pendant 6.5cm, chain 42.6cm*
£1,000 - 1,500 €1,200 - 1,700

225^Y
A coral dress ring

The circular cabochon coral *corallium rubrum*, within a double four-claw setting, to a scrollwork gallery, *ring size M*
£500 - 600 €580 - 700

226
A fancy-link necklace

The front designed as a knot, connected to a fancy-link back chain by rigid links of curved design, *length 41.7cm*
£600 - 800 €700 - 930

227
A tourmaline and diamond-set fish brooch

Realistically modelled as an angelfish, the carved pink tourmaline body, to reeded fins highlighted with brilliant-cut diamonds, *length 4.0cm*
£1,200 - 1,800 €1,400 - 2,100

228[~]
A pair of aquamarine and ruby pendant earrings

Each designed as a spectacle-set line of alternating circular-cut aquamarines and pear-shaped rubies, *length 8.5cm*
£600 - 800 €700 - 930

229
A garnet, sapphire and diamond ring

The oval mixed-cut spessartite garnet to a brilliant-cut diamond four-claw setting and gallery, between circular-cut orange sapphire shoulders, the hoop highlighted with a circular-cut pink sapphire, *diamonds approx. 0.35ct total, ring size N½*
£800 - 1,200 €930 - 1,400

230
Two fancy-link chain necklaces

1st: Composed of flattened curb-links, 2nd: Composed of venetian-links, *lengths: 1st 64.5cm, 2nd 60.0cm (2)* (partially illustrated)
£700 - 900 €810 - 1,000

231
A pair of orange sapphire earhoops

Each set with a row of circular-cut orange sapphires, *length 4.5cm*
£800 - 1,200 €930 - 1,400

232[~]
A cultured pearl and diamond ring and a ruby and diamond ring

1st: The 11.9mm cultured pearl, within an undulating surround of brilliant-cut diamonds, 2nd: Pavé-set to the front with brilliant-cut diamonds and circular-cut rubies, *1st: diamonds approx. 0.55ct total, 2nd: diamonds approx. 0.95ct total, ring sizes N and Q½ (2)*
£800 - 1,200 €930 - 1,400

233[~]
A gem-set giardinetto brooch

The oval cabochon ruby vase decorated with circular-cut rubies, circular cabochon sapphires and single-cut diamonds, issuing a spray of multi-gem carved flowerheads including amethyst, chrysoprase, lapis lazuli, carnelian and pink tourmaline, each highlighted with a brilliant-cut diamond stamen, *damage to amethysts, length 7.9cm*
£1,200 - 1,500 €1,400 - 1,700

234
A gold wristwatch, by Van Cleef & Arpels

The square dial with Roman numerals and baton hour markers, to an 18 carat yellow gold brick-link bracelet, *signed Van Cleef & Arpels, Swiss assay mark, European convention mark, length 17.0cm*
£1,500 - 2,000 €1,700 - 2,300

235^Y
A coral necklace

Designed as a continuous row of 13.0mm dyed coral *corallium rubrum* beads, *length 44.5cm*
£1,600 - 2,000 €1,900 - 2,300

236
A gold wristwatch, by Baume & Mercier

The 18 carat yellow gold circular dial with Roman numerals, to a tapered brick-link bracelet, *signed Baume & Mercier, maker's mark BMO, numbered, European convention marks, Swiss assay marks, length 18.0cm*
£700 - 900 €810 - 1,000

237
A fancy-link bracelet

Designed as a uniform row of large openwork square-links, *length 22.9cm*
£1,500 - 2,000 €1,700 - 2,300



224

226



227

225



228



230



229



231



232



233



235



234



236

237

238^Y

A coral and diamond pendant necklace

The oval cabochon coral *corallium rubrum*, within a surround of rose-cut diamonds, from a similarly-cut diamond bow surmount, to a flattened curb-link chain, *lengths: pendant 3.6cm, chain 38.7cm, fitted case by Jays, 142 & 144 Oxford St London*

£1,000 - 1,500 €1,200 - 1,700

239

A natural pearl and diamond-set pendant necklace

The oval baroque pearl, suspended from a bow surmount set with brilliant and single-cut diamonds, to a trace-link chain, *lengths: pendant 2.3cm, chain 40.0cm*

£1,800 - 2,200 €2,100 - 2,600

Accompanied by a report from The Gem & Pearl Laboratory stating that the pearl was found to be natural, saltwater. Report number 07825, dated 29th May 2013.

240

A diamond cluster pendant/brooch, circa 1890

The openwork flowerhead set throughout with old brilliant-cut and cushion-shaped diamonds, to a similarly-set suspensory loop, mounted in silver and gold, *diamonds approx. 3.30cts total, later pin fitting, length 4.0cm*

£1,500 - 2,000 €1,700 - 2,300

241

An emerald and diamond brooch/pendant, circa 1910

The openwork cartouche of foliate and ribbon design, centrally collet-set with a step-cut emerald, millegrain-set throughout with old brilliant, single and rose-cut diamonds, to a detachable figaro-link chain, *old brilliant and single-cut diamonds approx. 1.95cts total, damaged brooch fitting, lengths: pendant 4.8cm, chain 41.0cm*

£1,200 - 1,500 €1,400 - 1,700

242

A natural pearl and diamond bar brooch, circa 1890

The bouton-shaped 6.7mm pearl within an old brilliant-cut and cushion-shaped diamond cluster, set on a knife-edge bar, between similarly-cut diamonds, *diamonds approx. 3.65cts total, length 5.8cm, cased*

£1,500 - 2,000 €1,700 - 2,300

Accompanied by a report from The Gem & Pearl Laboratory stating that the pearl is natural, saltwater. Report number 08020, dated 21st June 2013.

243

A moonstone and diamond cluster ring, circa 1890

The central cabochon moonstone, within an old brilliant-cut diamond border, between pierced shoulders of foliate design, *diamonds approx. 0.40ct total, ring size H½*

£700 - 900 €810 - 1,000

244

An early 20th century diamond cluster ring

The raised cushion-shaped diamond, within a single-cut diamond border, *diamonds approx. 0.90ct total, French assay mark, later shank, ring size I½*

£700 - 900 €810 - 1,000

245

A three-strand cultured pearl necklace with diamond-set clasp

The three graduated strands of 3.5mm-7.3mm cultured pearls, to a rectangular clasp of geometric design set with single-cut diamonds, *diamonds approx. 0.35ct total, length of shortest strand 42.9cm*

£600 - 800 €700 - 930

246

An emerald and diamond cluster ring

The collet-set oval-cut emerald, within a brilliant-cut diamond surround, to a pierced gallery, *diamonds approx. 1.65cts total, ring size P*

£1,500 - 2,000 €1,700 - 2,300

247

An early 20th century natural pearl, emerald, and diamond wing brooch

The collet-set oval mixed-cut emerald, between two single-cut diamond wings of openwork design, suspending a collet-set similarly-cut diamond and a 9.0mm natural pearl drop, millegrain-set throughout, *diamonds approx. 0.40ct total, width 5.5cm*

£700 - 900 €810 - 1,000

Accompanied by a report from The Gem & Pearl Laboratory stating that the pearl is natural, saltwater. Report number 08010, dated 21st June 2013.

248

An opal and diamond cluster ring

The oval cabochon opal, within a brilliant-cut diamond surround and between princess-cut diamond shoulders, *diamonds approx. 0.70ct total, ring size N*

£1,500 - 2,000 €1,700 - 2,300

249

A diamond pendant

The old brilliant-cut diamond, weighing 1.00 carat, within a nine-claw setting, *length 1.0cm*

£2,200 - 2,800 €2,600 - 3,300

250

A diamond plaque ring, circa 1920

The elongated oval openwork plaque, millegrain-set throughout with old brilliant and single-cut diamonds, *diamonds approx. 1.85cts total, ring size L½*

£1,200 - 1,500 €1,400 - 1,700

251

An diamond ring, circa 1915

The collet-set old brilliant-cut diamond within a finely pierced single-cut diamond surround, millegrain-set throughout, to an engraved gallery of foliate design, *diamonds approx. 0.50ct total, one brilliant-cut diamond later replacement, ring size M½*

£800 - 1,200 €930 - 1,400

252

A single-strand pearl necklace and diamond-set clasp

The graduated row of 2.9mm-5.7mm pearls, to a circular clasp set with cushion-shaped and rose-cut diamonds, *length 43.5cm*

£1,200 - 1,800 €1,400 - 2,100

Accompanied by a report from The Gem & Pearl Laboratory stating that an extensive sample of pearls was tested and found to be natural, saltwater. Report number 08074, dated 28th June 2013.

253

A diamond line bracelet, circa 1920

The row of brilliant-cut diamonds, each within a box collet-setting, interspersed with larger similarly-cut diamonds, *diamonds approx. 2.20cts total, length 18.0cm*

£1,500 - 2,000 €1,700 - 2,300

254

Three strings of pearls

A collection of approximately 650, 2.6mm-3.1mm pearls, strung on three cords, accompanied by four loose pearls, *cords not secure, lengths: 1st 150.5cm, 2nd 29.6cm, 3rd 18.2cm (4)*

£2,500 - 3,000 €2,900 - 3,500

Accompanied by a report from The Gem & Pearl Laboratory stating that an extensive sample of pearls was tested and found to be natural, saltwater. Report number 08003, dated 19 June 2013.

255

A diamond cocktail wristwatch, circa 1925

The circular dial with Arabic hour markers, within a cushion-shaped diamond bezel, between brilliant and single-cut diamond lugs, to an expandable articulated bracelet, *diamonds approx. 2.30cts total, length 15.7cm*

£1,200 - 1,500 €1,400 - 1,700

256

A diamond and emerald ring

The pierced lozenge-shaped plaque, centrally-set with a baguette-cut diamond, flanked by rows of calibré-cut emeralds, and radiating courses of brilliant and single-cut diamonds, *principal diamond approx. 0.60ct, one emerald severely chipped, ring size K½*

£1,000 - 1,500 €1,200 - 1,700

257

An early 20th century diamond-set panel brooch

Of geometric openwork design, millegrain-set throughout with cushion-shaped and old brilliant-cut diamonds, collet-set to the centre with a larger old brilliant-cut diamond, *principal diamond approx. 0.50ct, remaining diamonds approx. 3.55cts total, later pin, width 5.2cm*

£800 - 1,200 €930 - 1,400



238



239



240



241



242



243



244



245



248



247



246



249



251



250



252



256



254

255

253



257



258

258
A mid 19th century gold and hardstone cameo brooch

The oval hardstone plaque carved to depict the bust of Minerva wearing a helmet decorated with laurel leaves, surmounted by a snake, within a large scrolled and textured frame with filigree and beaded detail, *length 6.2cm, fitted case (illustrated above)*

£1,500 - 2,000 €1,700 - 2,300

259
A gold and micromosaic pendant, circa 1870

The oval panel depicting two putti holding a flower basket, inlaid with white, black, grey and yellow tesseræ, within a gold ropetwist frame and beaded finials, the reverse with hair-work within a glazed compartment, *length 5.2cm*

£1,200 - 1,500 €1,400 - 1,700

260^Y
A shell cameo necklace, circa 1830

Composed of seven graduating oval shell plaques, carved to depict various mythological scenes including Phaethon driving the chariot of the Sun, Diana at rest and Hebe and Hercules, each within a gold cannetille surround, to a shell cameo clasp, *length 40.8cm*

£2,000 - 3,000 €2,300 - 3,500

261
A pair of diamond cluster earstuds, circa 1860

Each designed as a flowerhead, collet-set throughout with rose-cut diamonds, the largest to the centre, *later clips, length 1.3cm*
£500 - 600 €580 - 700

262
A diamond brooch, circa 1860

Of scrolling design, set throughout with rose-cut, cushion and pear-shaped diamonds, in pinched collet-settings, suspending a similarly-set drop, mounted in silver and gold, *cushion and pear-shaped diamonds approx. 1.90cts total, later pin, width 3.5cm*
£700 - 900 €810 - 1,000

263
An enamel and diamond single-stone memorial ring, 1883

The cushion-shaped diamond, between black enamel shoulders, engraved to the inside *Joseph Booth Ob. 25th Aug 1883 Aged 66 years, mounted in gold, diamond approx. 2.05cts, maker's mark BH, enamel loss, ring size P½*
£1,800 - 2,200 €2,100 - 2,600

264
A diamond cluster brooch, circa 1880

Set throughout with cushion-shaped diamonds, the centre with a larger similarly-shaped diamond in pinched collet-setting, *principal diamond approx. 1.70cts, remaining diamonds approx. 2.35cts total, width 2.0cm*
£3,000 - 5,000 €3,500 - 5,800

265
A lava cameo bracelet, circa 1860

The seven lava cameos, carved to depict literary figures such as Virgil, Petrarch and Dante, *length 17.5cm*
£700 - 900 €810 - 1,000

266
An intaglio brooch, by Carlo Giuliano, circa 1860 and an early 19th century seal

1st: The oval chalcedony intaglio, carved to depict the portrait of a classical gentleman wearing a laurel wreath, to a cylindrical bar, 2nd: The carnelian seal depicting a ship, with the inscription *I'LL COME AND SEE THEE IN SPITE O' THEM A'*, 1st with maker's mark 'C.G' and later pin, *lengths: 1st 7.1cm, 2nd 2.3cm (2)*
£700 - 900 €810 - 1,000

The inscription on the seal is taken from the song "Logie O'Buchan", by George Halket, written in the 18th century.

267
A mid 17th century enamel, paste and gem-set slide

Oval, set to the centre with a polychrome enamel scene depicting an enthroned royal couple indicating crowns and sceptre with legend "My Choice", against an ivory embroidered ground, beneath a rose-cut paste cover, within a gold piecrust border and silver frame of vari-cut colourless and red paste and garnets in foiled closed-back settings, the white enamel reverse with pink, black and blue foliate motifs, *width 2.6cm*
£1,000 - 1,500 €1,200 - 1,700

This slide is an unusual example of the "Stuart Crystal" genre of jewellery in which figures or initials are set behind faceted crystals or paste on hair or silk. Perhaps it belonged to a Royalist supporter during the English Civil War of 1642-51 or later after the Restoration of 1660. Dame Joan Evans notes a similarly elaborate slide, with enamelled figures in a amethyst and pearl border, belonging to Mrs Derwent Simmons which was said to have been gifted to her ancestress by Queen Henrietta Maria. See *English Jewellery*, Dame Joan Evans, London, 1920, p 129.

268^Y
A tortoiseshell piqué posé longchain, circa 1870

Each circular link inlaid with gold stars on each side, *damage to two links, length 78.0cm*
£800 - 1,200 €930 - 1,400

269
An early 19th century diamond cluster ring

Set throughout with graduated rose-cut diamonds in closed-back settings, to similarly-cut diamond shoulders, *later mount, ring size P½*
£1,500 - 2,000 €1,700 - 2,300

270[~]
A mid 19th century ruby, emerald and diamond brooch

Designed as a crown, set with circular-cut rubies and rose-cut diamonds, highlighted with a pear-shaped emerald, mounted in silver and gold, *later pin, length 4.4cm*
£800 - 1,000 €930 - 1,200

271
A gold, enamel and diamond hinged bangle, 1897

The glazed rock crystal heart-shaped compartment, revealing a red enamel guilloché heart overlaid with a rose-cut diamond flower, inscribed 'Votre amitié fait ma félicité' (your friendship makes my happiness), engraved to the reverse with 'G, From RVB and RB 1897', within a cushion-shaped and old brilliant-cut diamond border, crown and scrolling detail, *cushion-shaped and old brilliant-cut diamonds approx. 1.20cts total, inner diameter 5.5cm, cased by George Muir, Watchmaker & Jeweller, 174, Argyle St., Glasgow*
£1,000 - 1,500 €1,200 - 1,700

272
A mid 19th century enamel, pearl and diamond hinged bangle

The oval red guilloché enamel plaque, with applied pearl and rose-cut diamond accents, within a surround of similarly-cut diamonds, to openwork shoulders of fleur-de-lys design set with rose-cut diamonds and highlighted with two pearls, *pearls untested, inner diameter 5.6cm*
£1,000 - 1,500 €1,200 - 1,700



259



260



263



261



264



267



262



265



268



266



271



269



272



270

273
A three-strand cultured pearl and diamond clasp necklace
Each strand composed of 7.8mm-8.2mm cultured pearls, to a brilliant-cut diamond geometric clasp, *diamonds approx. 5.80cts total, length of shortest strand 49.6cm* (illustrated inside the front cover)
£2,000 - 3,000 €2,300 - 3,500

274
A pair of diamond-set earrings
Each designed as an openwork stylised flowerhead, set with brilliant-cut diamonds, the largest to the centre, *diamonds approx. 0.75ct total, length 2.5cm*
£700 - 900 €810 - 1,000

275~
A jade necklace
Set to the front with a series of collet-set oval-shaped cabochon jade, to a flat curb-link chain and a similarly-set jade clasp, *jade untested, length 52.3cm*
£700 - 900 €810 - 1,000

276
A diamond pendant necklace, by John Rørvig
The pear-shaped diamond within a four-claw setting, surmounted by a brilliant-cut diamond, to a snake-link chain, *principal diamond approx. 1.15cts, maker's mark, necklace length 41.8cm*
£1,500 - 2,000 €1,700 - 2,300

John Rørvig was a Danish jeweller, who handmade all his pieces and was known for his skill in goldsmithing. He made various pieces for the Danish Royal family and is sought after at auction due to the rarity of his work.

277
An emerald and diamond cluster ring, 1988
The step-cut emerald within a brilliant-cut diamond border, to an 18 carat yellow gold hoop, *diamonds approx. 1.00ct total, maker's mark SBLtd, London hallmark, ring size N*
£1,000 - 1,500 €1,200 - 1,700

278
A diamond line bracelet
Highly articulated, designed as a continuous row of collet-set brilliant-cut diamonds, *diamonds approx. 4.50cts total, length 18.0cm*
£1,500 - 2,500 €1,700 - 2,900

279
A diamond single-stone ring
The brilliant-cut diamond within an eight-claw setting, *diamond approx. 0.90ct, ring size R½*
£800 - 1,200 €930 - 1,400

280
A diamond single-stone ring
Of bi-coloured design, the old brilliant-cut diamond between engraved shoulders, *diamond approx. 1.00ct, ring size N½*
£1,200 - 1,800 €1,400 - 2,100

281~
A ruby and diamond ring, by Van Cleef & Arpels
Pavé-set to the front with brilliant-cut diamonds and circular-cut rubies, *diamonds approx. 0.65ct total, signed VCA, numbered, ring size L*
£2,300 - 2,600 €2,700 - 3,000

282~
A jade and diamond cluster ring
The oval cabochon jade within an undulating tapered baguette-cut diamond surround, *diamonds approx. 3.90cts total, ring size P*
£4,000 - 6,000 €4,600 - 7,000

Accompanied by a report from The Gem & Pearl Laboratory stating that no evidence of treatment was observed on the jadeite jade. Report number 07450, dated 30th March 2013.

283
A diamond dress ring
Of bi-coloured design, the old brilliant-cut diamond, between pierced radiating shoulders set with brilliant-cut diamonds, *principal diamond 1.74cts, remaining diamonds approx. 0.50ct total, ring size R*
£3,000 - 4,000 €3,500 - 4,600

By repute of the vendor the principal diamond weighs 1.74 carats.

284
A diamond half-hoop ring and earring suite
Of bi-coloured design, the 18 carat yellow gold ring set with princess-cut diamonds, spaced by white gold spokes, accompanied by a pair of earrings en suite, *diamonds approx. 3.05cts total, ring with maker's mark MLD and UK import mark, ring size K, earring length 2.0cm (2)*
£2,000 - 2,500 €2,300 - 2,900

285
A fringe necklace
The uniform fringe of foxtail-linking, to a concealed clasp, *length 49.6cm*
£1,800 - 2,200 €2,100 - 2,600

286
A zircon and diamond cluster ring and a pair of zircon earstuds
The ring designed as a circular-cut zircon within a surround of single-cut diamonds, accompanied by a pair of circular-cut zircon earstuds, *ring size L (2)*
£600 - 800 €700 - 930

287
A pair of diamond earrings
Each brilliant-cut diamond tiered cluster, *diamonds approx. 1.65cts total, length 1.5cm*
£600 - 800 €700 - 930

288~
A turquoise, ruby and diamond 'Chick' brooch, by Van Cleef & Arpels, circa 1960
Designed as a stylised chick perched on a branch, the textured head set with a circular cabochon ruby and a single-cut diamond eye, the body set with an oval cabochon turquoise, *signed Van Cleef & Arpels, numbered, French assay marks, length 3.5cm*
£1,000 - 1,500 €1,200 - 1,700

289
A diamond single-stone ring
The raised old brilliant-cut diamond of yellow tint, within a six-claw setting, *diamond approx. 1.10cts, diamond untested for natural colour, ring size P*
£1,200 - 1,800 €1,400 - 2,100

290
A 'Trinity' bangle, by Cartier, 1964
Of tri-coloured design, each hoop interlocked, *signed Cartier Paris, maker's mark, French assay marks, inner diameter 6.0cm, maker's pouch*
£2,500 - 3,500 €2,900 - 4,100

291~
A turquoise, ruby and diamond bracelet, circa 1965
Composed of five oval hoops set with circular cabochons turquoise, connected by links set with circular-cut rubies and single-cut diamonds, *diamonds approx. 0.60ct total, one diamond and one ruby deficient, one ruby severely chipped, bracelet length 18.7cm*
£1,200 - 1,500 €1,400 - 1,700

292
A gold and diamond-set wristwatch, by Boucheron
The square dial and 18 carat yellow gold brick-link bracelet, pavé-set throughout with brilliant-cut diamonds, with a circular cabochon sapphire crown, *diamonds approx. 5.35cts total, signed Boucheron, numbered, maker's mark, Swiss assay mark, European convention mark, length 17.6cm*
£3,000 - 4,000 €3,500 - 4,600

293
A diamond-set body jewel
The 18 carat yellow gold mount, terminating with collet-set brilliant-cut diamonds, in closed-back settings, *diamonds approx. 1.15cts total, UK hallmark, length 2.6cm*
£1,200 - 1,600 €1,400 - 1,900



274

275

276

277

279

278

281

284

282

280

285

286

283

289

288

290

287

291

292

293

- 294**
An emerald and diamond ring
 The rectangular-cut emerald, to scrolling marquise, baguette and tapered baguette-cut diamond shoulders, *diamonds approx. 4.40cts total, ring size M*
£4,000 - 6,000 €4,600 - 7,000
- 295**
A diamond dress ring
 The undulating rectangular plaque, channel-set with princess-cut diamonds, *diamonds approx. 1.00ct total, ring size M½*
£800 - 1,200 €930 - 1,400
- 296**
A diamond double-clip brooch, circa 1935
 Each pierced brooch of scrolling design, set throughout with brilliant, single and baguette-cut diamonds, *diamonds approx. 3.80cts total, width 5.4cm*
£2,000 - 3,000 €2,300 - 3,500
- 297**
An emerald and diamond dress ring
 The oval mixed-cut emerald, weighing 10.86 carats, within a brilliant-cut diamond border, *diamonds approx. 0.90ct total, maker's mark MD, French assay mark, ring size K*
£4,000 - 6,000 €4,600 - 7,000
- Accompanied by a report from The Gem & Pearl Laboratory stating that the emerald is of Colombian origin, with evidence of moderate clarity enhancement. Report number 05582, dated 1st May 2012.
- 298**
A double-strand cultured pearl necklace with emerald and diamond clasp
 The two rows of 7.3mm cultured pearls, to a clasp of floral design centrally-set with a step-cut emerald within a brilliant and single-cut diamond surround, *diamonds approx. 0.55ct total, maker's mark KN, Austrian assay mark, length of shortest strand 40.7cm, clasp 1.9cm*
£1,500 - 2,000 €1,700 - 2,300
- 299**
A pair of diamond earstuds
 Each princess-cut diamond, within a four-claw setting, *diamonds approx 1.00ct total*
£600 - 800 €700 - 930
- 300**
A 'Happy Diamond' pendant necklace, by Chopard
 The circular glazed compartment containing collet-set brilliant-cut diamonds, within a similarly-cut diamond surround and surmount, to a fancy-link chain, *diamonds approx. 0.45ct total, signed Chopard, numbered, lengths: pendant 2.8cm, chain 45.1cm*
£1,000 - 1,500 €1,200 - 1,700
- 301**
A diamond star pendant
 The stylised star pavé-set throughout with brilliant-cut diamonds, *diamonds approx. 2.05cts total, length 6.3cm*
£1,500 - 1,800 €1,700 - 2,100
- 302^Ω**
A diamond double-clip brooch
 Each confronting stylised brilliant and baguette-cut diamond flower bouquet, to a brilliant-cut diamond pavé-set tied ribbon, *diamonds approx. 6.70cts total, width 5.6cm*
£2,800 - 3,500 €3,300 - 4,100
- 303**
An emerald and diamond dress ring
 The pear-shaped emerald within brilliant-cut diamond double borders, *diamonds approx. 0.70ct total, ring size Q½*
£8,000 - 10,000 €9,300 - 12,000
- Accompanied by a report from The Gem & Pearl Laboratory, stating that the emerald is of Colombian origin, with evidence of minor clarity enhancement. Report number 07984, dated 19th June 2013.
- 304**
A diamond single-stone ring
 The brilliant-cut diamond, within a fleur-de-lys carved gallery, *diamond approx. 1.15cts, ring size K½*
£1,800 - 2,200 €2,100 - 2,600
- 305**
An emerald and diamond eternity ring
 Channel-set with alternating square-cut emeralds and princess-cut diamonds, *diamonds approx. 1.10cts total, ring size M½*
£800 - 1,200 €930 - 1,400
- 306**
A single-strand cultured pearl necklace and gem-set clasp
 The graduated row of 7.7mm-10.3mm cultured pearls, to a calibr -cut emerald, baguette and single-cut diamond geometric clasp, *diamonds approx. 0.80ct total, length 60.0cm*
£2,500 - 3,500 €2,900 - 4,100
- 307**
A green garnet and diamond cluster ring
 The oval-cut tsavorite garnet, within a marquise-cut diamond border, to a platinum hoop, *diamonds approx. 1.50cts total, maker's mark, partial London hallmark, ring size R*
£700 - 900 €810 - 1,000
- 308[~]**
A jade and diamond cluster ring
 The rectangular-cut jade within a brilliant-cut diamond border, to scrolling shoulders, *diamonds approx. 1.80cts total, jade untested, ring size L½*
£1,000 - 1,500 €1,200 - 1,700
- 309**
An emerald and diamond ring
 Of pyramidal design, the raised cushion-shaped emerald within a baguette and brilliant-cut diamond surround, to openwork shoulders, *diamonds approx. 3.60cts total, ring size K*
£4,500 - 5,500 €5,200 - 6,400
- 310**
A diamond single-stone ring
 The brilliant-cut diamond, within an eight-claw setting, *diamond approx. 1.25cts, ring size M*
£1,800 - 2,200 €2,100 - 2,600
- 311**
A diamond bracelet
 Designed as a continuous row of brilliant-cut diamond-set rectangular panels, connected by similarly-cut diamond links, *diamonds approx. 1.05cts total, length 17.7cm*
£1,200 - 1,500 €1,400 - 1,700
- 312**
A diamond line bracelet
 The continuous line of princess-cut diamonds, each in a half-collet setting, *diamonds approx. 11.10cts total, length 18.4cm*
£5,000 - 7,000 €5,800 - 8,100
- 313**
A diamond line bracelet
 Designed as a continuous row of brilliant-cut diamond flowerheads, the stamen accented with a bead, mounted in 18 carat white gold, *diamonds approx. 4.40cts total, maker's mark LA, partial UK hallmark, length 17.6cm*
£1,000 - 1,500 €1,200 - 1,700
- 314**
A diamond-set bracelet
 Of scrolling design, set to the front with graduated brilliant-cut diamonds, to a gate-link bracelet, *diamonds approx. 2.60cts total, length 15.5cm*
£1,500 - 2,000 €1,700 - 2,300
- 315**
An emerald and diamond dress ring
 The oval openwork plaque of textured and bi-coloured design, centrally-set with a marquise-cut emerald within borders of brilliant-cut diamonds, *diamonds approx. 0.70ct total, ring size K*
£1,200 - 1,500 €1,400 - 1,700
- 316[~]**
A jade and diamond panel bracelet
 Set to the front with oval-shaped cabochon jade, interspersed with old brilliant-cut diamond-set lobes, to a further similarly-cut diamond-set backchain, *diamonds approx. 4.65cts total, jade untested, length 16.6cm*
£2,000 - 3,000 €2,300 - 3,500



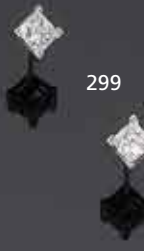
294



295



298



299



300



301



296



297



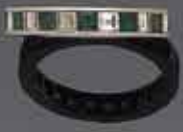
302



304



303



305



306



310



313



307



309



308



311



315



316



317

317~

A ruby-set compact, by Cartier, 1946

The 9 carat yellow gold oval compact, of radiating reeded design, centrally inscribed with the letter 'J', the oval cabochon ruby clasp opening to reveal a mirrored lid, signed Cartier London, maker's mark JC, London hallmark, width 7.3cm, fitted leather pouch (illustrated above)
£1,500 - 2,000 €1,700 - 2,300

318

A gold collar necklace, by Roy King, 1959

The textured bark 18 carat yellow gold fancy-link necklace of flattened woven mesh design, to a brilliant-cut diamond set concealed clasp, maker's mark RCK, numbered, London hallmark, damage to mesh, length 48.4cm, cased by Cartier (non fitted)
£2,000 - 3,000 €2,300 - 3,500

By repute, this necklace was purchased at Cartier in the 1960's.

Roy Cecil King (1913-2000) was a British watch designer and jeweller. In the 1930's he manufactured watches and jewellery for Cartier, Garrard and Rolex amongst others. After the war he made watches under his name and worked for Bueche-Girod. In 1961, Roy King atelier won the top prizes at the British Modern Jewellery exhibition. His clients included Saudi princes and The Beatles. He was renowned for his bark finish designs.

319

A pair of cultured pearl and diamond earrings

Each set with two 9.1mm-9.3mm cultured pearls, within a textured surround, highlighted with three brilliant-cut diamonds, length 2.1cm
£500 - 700 €580 - 810

320~

A ruby and diamond spray brooch, 1957

Modelled as a flower bouquet, the 18 carat yellow gold polished stems decorated with pear-shaped, circular-cut rubies and brilliant-cut diamonds, highlighted with ropetwist details, diamonds approx. 0.55ct total, maker's mark MG, UK import mark, length 7.8cm
£700 - 900 €810 - 1,000

321*

A diamond three-stone ring, 1918

The tapering 18 carat yellow gold band gypsy-set with three cushion-shaped diamonds, the largest to the centre, diamonds approx. 0.70ct total, maker's mark J.P., London hallmark, ring size Y½
£500 - 700 €580 - 810

322

A diamond single-stone ring

The cushion-shaped diamond, between reeded shoulders, diamond approx. 2.80cts, ring size R½
£3,000 - 4,000 €3,500 - 4,600

323~

A ruby and diamond three-stone ring

The oval-cut ruby between brilliant-cut diamonds, diamonds approx. 1.00ct total, maker's mark B&D, ring size S½
£800 - 1,200 €930 - 1,400

324~

A ruby and diamond cluster ring

The oval-cut ruby, within a brilliant-cut diamond border, to an 18 carat yellow gold hoop, diamonds approx. 0.35ct total, maker's mark CE, London hallmark, ring size L
£800 - 1,200 €930 - 1,400

325~

A diamond spray brooch

Of foliate design, the polished branches highlighted with single and brilliant-cut diamonds, diamonds approx. 4.20cts total, maker's mark, French assay mark, length 6.8cm
£3,000 - 4,000 €3,500 - 4,600

326

A gold and diamond ring

The brilliant-cut diamond, within an 18 carat yellow gold reeded hoop, diamond approx. 1.05cts, maker's mark RN&Co, London hallmark, ring size R (leading edge)
£1,200 - 1,500 €1,400 - 1,700

327~

A gold and ruby bracelet, 1961

The series of 9 carat yellow gold oval plaques of textured and polished brick-linking, overlaid by oval contoured reeded plaques set with lines of circular-cut rubies, maker's mark EJLd, London hallmark, length 17.7cm
£1,000 - 1,500 €1,200 - 1,700

328

A natural pearl and diamond ring

Of floral design, set to the front with a natural 6.3mm button-shaped pearl, accented with a collet-set cushion-shaped diamond, ring size M
£600 - 800 €700 - 930

Accompanied by a report from The Gem & Pearl Laboratory stating that the button-shaped pearl is natural, saltwater. Report number 08046, dated 28th June 2013.

329~

A gold and ruby-set bracelet, 1960

Set to the front with three circular-cut ruby domes flanked by two scalloped borders, to a 9 carat yellow gold articulated brick-link bracelet, maker's mark EJLd, London hallmark, length 17.8cm
£1,500 - 2,000 €1,700 - 2,300

330

A fancy-coloured diamond and diamond dress ring, circa 1940

The old brilliant-cut diamond of yellow tint, weighing 0.93 carat, within a square collet-setting, offset by a raised plaque pavé-set with cushion-shaped diamonds, remaining diamonds approx. 0.30ct total, ring size S
£1,500 - 2,000 €1,700 - 2,300

Accompanied by a report from AnchorCert stating that the diamond is fancy yellow colour, SI2 clarity. Report number 20010278, dated 12 June 2013.

331~

A ruby and diamond dress clip, circa 1940

Of geometric design, the pierced circular frame decorated with rows of calibre-cut rubies, centrally-set with a cascade of similarly-cut rubies and brilliant-cut diamonds, diamonds approx. 2.00cts total, length 4.8cm
£1,500 - 2,000 €1,700 - 2,300

332

A diamond single-stone ring

The cushion-shaped diamond, weighing 3.97 carats, within a six-claw setting, maker's mark D.L.D., ring size K½
£3,000 - 4,000 €3,500 - 4,600

333~

A ruby and diamond wristwatch, by Jaeger LeCoultre for Kutchinsky and a ruby and diamond ring, by Kutchinsky, circa 1960

The single and brilliant-cut diamond and circular-cut ruby scroll opening to reveal a circular dial with Arabic numerals and baton hour markers, to an 18 carat yellow gold reeded and tapered bracelet, accompanied by a ring of similar design, diamonds approx. 1.45cts total, dial signed Jaeger LeCoultre, wristwatch signed Kutchinsky, both with maker's mark KLD, London hallmark, wristwatch length 17.3cm, ring size P, maker's cases (2)
£3,400 - 3,800 €4,000 - 4,400

318

319

326



320



322



325



321



323



324



327



328



333



332



330



331



329

334
A diamond single-stone ring
The cushion-shaped diamond, within a six-claw setting, *diamond approx. 2.45cts, ring size M½*
£6,000 - 7,000 €7,000 - 8,100

335
An art deco pearl, synthetic sapphire and diamond ring, circa 1920
The navette-shaped plaque set to the centre with a 5.4mm pearl, within a pierced surround set with rose-cut diamonds and highlighted with fancy-cut synthetic sapphires, *pearl untested, ring size M*
£700 - 900 €810 - 1,000

336
A sapphire and diamond cluster ring
Designed as a flowerhead, the stamen set with a brilliant-cut diamond in collet-setting, within a calibr -cut sapphire petal surround highlighted with four collet-set old brilliant-cut diamonds, between brilliant-cut diamond shoulders, to a pierced gallery, *principal diamond approx. 1.05cts, ring size M½*
£3,500 - 4,000 €4,100 - 4,600

337
A late 19th century sapphire and diamond brooch
Slightly curved, set with alternating cushion-shaped and old brilliant-cut diamonds and oval-cut sapphires, with rose-cut diamond highlights, *cushion-shaped and old brilliant-cut diamonds approx. 2.30cts total, one rose-cut diamond deficient, later pin, length 5.0cm*
£1,200 - 1,800 €1,400 - 2,100

338
A pair of diamond cluster earrings and a pair of sapphire and diamond pendent earrings
1st: Each designed as a flowerhead, set throughout with brilliant-cut diamonds, 2nd: Of bi-coloured design, each brilliant-cut diamond suspended from a circular-cut sapphire and brilliant-cut diamond surmount, *diamonds approx. 1.40cts total, one large chip to diamond, lengths: 1st 0.9cm, 2nd 5.1cm (2)*
£1,200 - 1,800 €1,400 - 2,100

339
An art deco diamond double-clip brooch, circa 1930
Of geometric design, the two opposing geometric tapering pierced plaques set throughout with old brilliant, single and baguette-cut diamonds, *diamonds approx. 8.40cts total, width 7.9cm*
£3,000 - 4,000 €3,500 - 4,600

340
A cultured pearl choker with a sapphire and diamond clasp
The eight-strands of 3.6mm-4.1mm cultured pearl, accented by two brilliant-cut diamond-set bars, to an octagonal clasp centrally-set with an oval cabochon sapphire within a brilliant, single and baguette-cut diamond surround, *diamonds approx. 0.95ct total, length 34.7cm*
£2,000 - 3,000 €2,300 - 3,500

341
A diamond single-stone ring
The marquise-cut diamond, weighing 3.51 carats, within a six-claw setting, *ring size P½*
£6,000 - 8,000 €7,000 - 9,300

Accompanied by a report from The Precious Stone Laboratory London stating that the diamond is K colour, VS2 clarity. Report number 975382, dated 9th June 2004.

342
A diamond three-stone ring
The step-cut diamond within a four-claw setting, between triangular-cut diamond shoulders, *principal diamond approx. 2.10cts, remaining diamonds approx. 0.90ct total, ring size L½*
£4,500 - 5,500 €5,200 - 6,400

343
A sapphire and diamond ring
The cut-cornered step-cut sapphire, within a four-claw setting, between tiered collet-set baguette-cut diamond shoulders, *diamonds approx. 0.45ct total, ring size O*
£2,000 - 3,000 €2,300 - 3,500

344
An art deco diamond double-clip brooch, circa 1925
Each openwork plaque of scrolling and geometric design, set throughout with single, brilliant, baguette-cut and trapezoid-shaped diamonds, *diamonds approx. 4.50cts total, later pin, length 6.7cm, fitted case by Gowland Bros Ltd, 48 Cornhill, EC*
£2,200 - 3,000 €2,600 - 3,500

345
An art deco diamond dress ring, circa 1935
Of odeonesque design, set to the front with brilliant, single and baguette-cut diamonds, to a tapering band, *diamonds approx. 1.50cts total, ring size L½ (leading edge)*
£1,200 - 1,500 €1,400 - 1,700

346
A sapphire and diamond dress ring
The line of calibr -cut sapphires, within a scalloped frame of single-cut diamonds, between similarly-cut diamond shoulders, *diamonds approx. 0.40ct total, ring size L*
£500 - 700 €580 - 810

347
An art deco synthetic sapphire and diamond wristwatch, circa 1930
The rectangular dial with Arabic hour markers, within a brilliant-cut diamond bezel, between articulated calibr -cut synthetic sapphires, triangular-shaped, brilliant and single-cut diamond lugs, to a square-link bracelet, *diamonds approx. 1.30cts total, length 16.4cm*
£800 - 1,200 €930 - 1,400

348
An art deco diamond double-clip brooch, circa 1920
The two opposing plaques of openwork scrolling design set with old brilliant, single and baguette-cut diamonds, *diamonds approx. 2.30cts total, width 4.5cm*
£800 - 1,200 €930 - 1,400

349
An art deco sapphire-set and diamond wristwatch, circa 1930
The rectangular dial with Arabic hour markers, within a single-cut diamond bezel with a circular cabochon synthetic sapphire winder, between similarly and baguette-cut diamond articulated geometric lugs, to a black leather double-rope bracelet, *diamonds approx. 0.85ct total, length 17.5cm*
£500 - 600 €580 - 700

350
An onyx and diamond ring, by Jean Fouquet, circa 1925
The square onyx plaque, between triangular-shaped single-cut diamond shoulders, *signed Jean Fouquet, numbered, ring size L*
£800 - 1,200 €930 - 1,400

This ring is illustrated page 20 of Victor Arwas' 'Art Deco' book, published in 1980 by Academy Editions. Jean Fouquet is the son of Art Nouveau jeweller Georges Fouquet. He designed original abstract and geometric jewellery pieces from 1919.

351
An early 20th century diamond single-stone ring
The cushion-shaped diamond, weighing 4.03 carats, within a eight-claw setting, between single-cut diamond shoulders, *split to shank, ring size L, cased*
£8,000 - 10,000 €9,300 - 12,000

352
A diamond single-stone ring
The square step-cut diamond, within a four-claw setting, between single-cut diamond shoulders, *principal diamond approx. 1.50cts, ring size I½*
£3,800 - 4,200 €4,400 - 4,900

End of Sale

The next Knightsbridge Jewellery Sale will be held on Wednesday, 11th September 2013



334



337



336



335



338

340



342



341



339



343



345



344



346



349



351



347



352



350



348

Index	Lot No
Ambrosi	161
Asprey & Co	18
Baume & Mercier	236
Boodles	62
Boucheron	292
Buccellati	29, 130, 131
Bueche-Girod	37
Bulgari	63, 65, 152, 155
Capello	169
Carlo Giuliano	266
Cartier	14, 16, 20, 28, 30, 46, 72, 107, 172, 290, 317
Chopard	300
Garrard	32
Jean Fouquet	350
John Rørvig	276
Jaeger LeCoultre	333
Kutchinsky	76, 333
Lalaounis	136
La Nouvelle Bague	75
Meister	120
Mellerio dits Meller	71
Piaget	167, 204
Roy King	318
Tiffany & Co.	102
Van Cleef and Arpels	99, 234, 281, 288
Vourakis	179

Diamond Grading

Colour

GIA	CIBJO	UK TRADITIONAL
D	Exceptional White +	Finest White
E	Exceptional White	Finest White
F	Rare White +	Fine White
G	Rare White	Fine White
H	White	White
I	Slightly Tinted White	Commercial White
J	Slightly Tinted White	Top Silver Cape
K	Tinted White	Top Silver Cape
L	Tinted White	Silver Cape
M to N	Tinted Colour	Light Cape
O to R	Tinted Colour	Cape
R to Z	Tinted Colour	Dark Cape

Clarity

IF	Internally Flawless	No inclusions and only insignificant surface blemishes when viewed under 10X magnification
VVS1-VVS2	Very, Very Slightly Included	Minute inclusions that are incredibly difficult to see under 10X magnification, generally only visible from the back of the stone and may be removed easily by repolishing
VS1-VS2	Very Slightly Included	Minor inclusions that range from difficult (VS1) to slightly easier (VS2) to see under 10X magnification
S11-2	Slightly Included	Noticeable inclusions that are easy (S11) or very easy (S12) to see under 10X magnification
I1-3	Obvious Inclusions	Obvious inclusions that are easily visible under 10X magnification and in some cases may even be seen without magnification

Ring Sizes

English	Metric	American	French/Japanese
A	37.8252	1/2	-
A 1/2	38.4237	3/4	-
B	39.0222	1	-
B 1/2	39.6207	1 1/4	-
C	40.2192	1 1/2	-
C 1/2	40.8177	1 3/4	-
D	41.4162	2	1
D 1/2	42.0147	2 1/4	2
E	42.6132	2 1/2	-
E 1/2	43.2117	2 3/4	3
F	43.8102	3	4
F 1/2	44.4087	3 1/4	-
G	45.0072	3 1/4	5
G 1/2	45.6057	3 1/2	-
H	46.2042	3 3/4	6
H 1/2	46.8027	4	-
I	47.4012	4 1/4	7
I 1/2	47.9997	4 1/2	8
J	48.5982	4 3/4	-
J 1/2	49.1967	5	9
K	49.7952	5 1/4	10
K 1/2	50.3937	5 1/2	-
L	50.9922	5 3/4	11
L 1/2	51.5907	6	-
M	52.1892	6 1/4	12
M 1/2	52.7877	6 1/2	13
N	53.4660	6 3/4	-
N 1/2	54.1044	7	14
O	54.7428	7	15
O 1/2	55.3812	7 1/4	-
P	56.0196	7 1/2	16
P 1/2	56.6580	7 3/4	-
Q	57.2964	8	17
Q 1/2	57.9348	8 1/4	18
R	58.5732	8 1/2	-
R 1/2	59.2116	8 3/4	19
S	59.8500	9	20
S 1/2	60.4884	9 1/4	-
T	61.1268	9 1/2	21
T 1/2	61.7652	9 3/4	22
U	62.4026	10	-
U 1/2	63.0420	10 1/4	23
V	63.6804	10 1/2	24
V 1/2	64.3188	10 3/4	-
W	64.8774	11	25
W 1/2	65.4759	11 1/4	-
X	66.0744	11 1/2	26
X 1/2	66.6729	11 3/4	-
Y	67.2714	12	-
Y 1/2	67.8699	12 1/4	-
Z	68.4684	12 1/2	-

NOTICE TO BIDDERS

This notice is addressed by *Bonhams* to any person who may be interested in a *Lot*, including *Bidders* and potential *Bidders* (including any eventual *Buyer* of the *Lot*). For ease of reference we refer to such persons as "*Bidders*" or "you". Our List of Definitions and Glossary is incorporated into this *Notice to Bidders*. It is at Appendix 3 at the back of the *Catalogue*. Where words and phrases are used in this notice which are in the List of Definitions, they are printed in italics.

IMPORTANT: Additional information applicable to the *Sale* may be set out in the *Catalogue* for the *Sale*, in an insert in the *Catalogue* and/or in a notice displayed at the *Sale* venue and you should read them as well. Announcements affecting the *Sale* may also be given out orally before and during the *Sale* without prior written notice. You should be alert to the possibility of changes and ask in advance of bidding if there have been any.

1. OUR ROLE

In its role as *Auctioneer* of *Lots*, *Bonhams* acts solely for and in the interests of the *Seller*. *Bonhams'* job is to sell the *Lot* at the highest price obtainable at the *Sale* to a *Bidder*. *Bonhams* does not act for *Buyers* or *Bidders* in this role and does not give advice to *Buyers* or *Bidders*. When it or its staff make statements about a *Lot* or, if *Bonhams* provides a *Condition Report* on a *Lot* it is doing that on behalf of the *Seller* of the *Lot*. *Bidders* and *Buyers* who are themselves not expert in the *Lots* are strongly advised to seek and obtain independent advice on the *Lots* and their value before bidding for them. The *Seller* has authorised *Bonhams* to sell the *Lot* as its agent on its behalf and, save where we expressly make it clear to the contrary, *Bonhams* acts only as agent for the *Seller*. Any statement or representation we make in respect of a *Lot* is made on the *Seller's* behalf and, unless *Bonhams* sells a *Lot* as principal, not on our behalf and any *Contract for Sale* is between the *Buyer* and the *Seller* and not with us. If *Bonhams* sells a *Lot* as principal this will either be stated in the *Catalogue* or an announcement to that effect will be made by the *Auctioneer*, or it will be stated in a notice at the *Sale* or an insert in the *Catalogue*.

Bonhams does not owe or undertake or agree to any duty or responsibility to you in contract or tort (whether direct, collateral, express, implied or otherwise). If you successfully bid for a *Lot* and buy it, at that stage *Bonhams* does enter into an agreement with the *Buyer*. The terms of that contract are set out in our *Buyer's Agreement*, which you will find at Appendix 2 at the back of the *Catalogue*. This will govern *Bonhams'* relationship with the *Buyer*.

2. LOTS

Subject to the *Contractual Description* printed in bold letters in the *Entry* about the *Lot* in the *Catalogue* (see paragraph 3 below), *Lots* are sold to the *Buyer* on an "as is" basis, with all faults and imperfections. Illustrations and photographs contained in the *Catalogue* (other than photographs forming part of the *Contractual Description*) or elsewhere of any *Lots* are for identification purposes only. They may not reveal the true condition of the *Lot*. A photograph or illustration may not reflect an accurate reproduction of the colour(s) of the *Lot*. *Lots* are available for inspection prior to the *Sale* and it is for you to satisfy yourself as to each and every aspect of a *Lot*, including its authorship, attribution, condition, provenance, history, background, authenticity, style, period, age, suitability, quality, roadworthiness (if relevant), origin, value and estimated selling price (including the *Hammer Price*). It is your responsibility to examine any *Lot* in which you are interested. It should be remembered that the actual condition of a *Lot* may not be as good as that indicated by its outward appearance. In particular, parts may have been replaced or renewed and *Lots* may not be authentic or of satisfactory quality; the inside of a *Lot* may not be visible and may not be original or may be damaged, as for example where it is covered by upholstery or material. Given the age of many *Lots* they may have been damaged and/or repaired and you should not assume that a *Lot* is in good condition. Electronic or mechanical parts may not operate or may not comply with current statutory requirements. You should not assume that electrical items designed to operate on mains electricity will be suitable for connection to the mains electricity supply and you should obtain a report from

a qualified electrician on their status before doing so. Such items which are unsuitable for connection are sold as items of interest for display purposes only. If you yourself do not have expertise regarding a *Lot*, you should consult someone who does to advise you. We can assist in arranging facilities for you to carry out or have carried out more detailed inspections and tests. Please ask our staff for details.

Any person who damages a *Lot* will be held liable for the loss caused.

3. DESCRIPTIONS OF LOTS AND ESTIMATES

Contractual Description of a Lot

The *Catalogue* contains an *Entry* about each *Lot*. Each *Lot* is sold by its respective *Seller* to the *Buyer* of the *Lot* as corresponding only with that part of the *Entry* which is printed in bold letters and (except for the colour, which may be inaccurately reproduced) with any photograph of the *Lot* in the *Catalogue*. The remainder of the *Entry*, which is not printed in bold letters, represents *Bonhams'* opinion (given on behalf of the *Seller*) about the *Lot* only and is not part of the *Contractual Description* in accordance with which the *Lot* is sold by the *Seller*.

Estimates

In most cases, an *Estimate* is printed beside the *Entry*. *Estimates* are only an expression of *Bonhams'* opinion made on behalf of the *Seller* of the range where *Bonhams* thinks the *Hammer Price* for the *Lot* is likely to fall; it is not an *Estimate* of value. It does not take into account any VAT or *Buyer's Premium* payable. *Lots* can in fact sell for *Hammer Prices* below and above the *Estimate*. Any *Estimate* should not be relied on as an indication of the actual selling price or value of a *Lot*. *Estimates* are in the currency of the *Sale*.

Condition Reports

In respect of most *Lots*, you may ask for a *Condition Report* on its physical condition from *Bonhams*. If you do so, this will be provided by *Bonhams* on behalf of the *Seller* free of charge. *Bonhams* is not entering into a contract with you in respect of the *Condition Report* and accordingly does not assume responsibility to you in respect of it. Nor does the *Seller* owe or agree to owe you as a *Bidder* any obligation or duty in respect of this free report about a *Lot*, which is available for your own inspection or for inspection by an expert instructed by you. However, any written *Description* of the physical condition of the *Lot* contained in a *Condition Report* will form part of the *Contractual Description* of the *Lot* under which it is sold to any *Buyer*.

The Seller's responsibility to you

The *Seller* does not make or agree to make any representation of fact or contractual promise, *Guarantee* or warranty and undertakes no obligation or duty, whether in contract or in tort (other than to the eventual *Buyer* as set out above), in respect of the accuracy or completeness of any statement or representation made by him or on his behalf, which is in any way descriptive of any *Lot* or as to the anticipated or likely selling price of any *Lot*. Other than as set out above, no statement or representation in any way descriptive of a *Lot* or any *Estimate* is incorporated into any *Contract for Sale* between a *Seller* and a *Buyer*.

Bonhams' responsibility to you

You have the opportunity of examining the *Lot* if you want to and the *Contract for Sale* for a *Lot* is with the *Seller* and not with *Bonhams*; *Bonhams* acts as the *Seller's* agent only (unless *Bonhams* sells the *Lot* as principal).

Bonhams undertakes no obligation to you to examine, investigate or carry out any tests, either in sufficient depth or at all, on each *Lot* to establish the accuracy or otherwise of any *Descriptions* or opinions given by *Bonhams*, or by any person on *Bonhams'* behalf, whether in the *Catalogue* or elsewhere.

You should not suppose that such examinations, investigations or tests have occurred.

Bonhams does not make or agree to make any representation of fact, and undertakes no obligation or duty (whether in contract or tort) in respect of the accuracy or completeness of any statement or representation made by *Bonhams* or on

Bonhams' behalf which is in any way descriptive of any *Lot* or as to the anticipated or likely selling price of any *Lot*. No statement or representation by *Bonhams* or on its behalf in any way descriptive of any *Lot* or any *Estimate* is incorporated into our *Buyer's Agreement*.

Alterations

Descriptions and *Estimates* may be amended at *Bonhams'* discretion from time to time by notice given orally or in writing before or during a *Sale*.

THE *LOT* IS AVAILABLE FOR INSPECTION AND YOU MUST FORM YOUR OWN OPINION IN RELATION TO IT. YOU ARE STRONGLY ADVISED TO EXAMINE ANY *LOT* OR HAVE IT EXAMINED ON YOUR BEHALF BEFORE THE *SALE*.

4. CONDUCT OF THE SALE

Our *Sales* are public auctions which persons may attend and you should take the opportunity to do so. We do reserve the right at our sole discretion to refuse admission to our premises or to any *Sale* without stating a reason. We have complete discretion as to whether the *Sale* proceeds, whether any *Lot* is included in the *Sale*, the manner in which the *Sale* is conducted and we may offer *Lots* for *Sale* in any order we choose notwithstanding the numbers given to *Lots* in the *Catalogue*. You should therefore check the date and starting time of the *Sale*, whether there have been any withdrawals or late entries. Remember that withdrawals and late entries may affect the time at which a *Lot* you are interested in is put up for *Sale*. We have complete discretion to refuse any bid, to nominate any bidding increment we consider appropriate, to divide any *Lot*, to combine two or more *Lots*, to withdraw any *Lot* from a *Sale* and, before the *Sale* has been closed, to put up any *Lot* for auction again. Auction speeds can exceed 100 *Lots* to the hour and bidding increments are generally about 10%. However these do vary from *Sale* to *Sale* and from *Auctioneer* to *Auctioneer*. Please check with the department organising the *Sale* for advice on this. Where a *Reserve* has been applied to a *Lot*, the *Auctioneer* may, in his absolute discretion, place bids (up to an amount not equalling or exceeding such *Reserve*) on behalf of the *Seller*. We are not responsible to you in respect of the presence or absence of any *Reserve* in respect of any *Lot*. If there is a *Reserve* it will normally be no higher than the lower figure for any *Estimate* in the *Catalogue*, assuming that the currency of the *Reserve* has not fluctuated adversely against the currency of the *Estimate*. The *Buyer* will be the *Bidder* who makes the highest bid acceptable to the *Auctioneer* for any *Lot* (subject to any applicable *Reserve*) to whom the *Lot* is knocked down by the *Auctioneer* at the fall of the *Auctioneer's* hammer. Any dispute as to the highest acceptable bid will be settled by the *Auctioneer* in his absolute discretion. All bids tendered will relate to the actual *Lot* number announced by the *Auctioneer*. An electronic currency converter may be used at the *Sale*. This equipment is provided as a general guide as to the equivalent amount in certain currencies of a given bid. We do not accept any responsibility for any errors which may occur in the use of the currency converter. We may use video cameras to record the *Sale* and may record telephone calls for reasons of security and to assist in solving any disputes which may arise in relation to bids made at the *Sale*. At some *Sales*, for example, jewellery *Sales*, we may use screens on which images of the *Lots* will be projected. This service is provided to assist viewing at the *Sale*. The image on the screen should be treated as an indication only of the current *Lot*. It should be noted that all bids tendered will relate to the actual *Lot* number announced by the *Auctioneer*. We do not accept any responsibility for any errors which may occur in the use of the screen.

5. BIDDING

We do not accept bids from any person who has not completed and delivered to us one of our *Bidding Forms*, either our *Bidder Registration Form*, *Absentee Bidding Form* or *Telephone Bidding Form*. You will be asked for proof of identity, residence and references, which, when asked for, you must supply if your bids are to be accepted by us. Please bring your passport, driving licence (or similar photographic proof of identity) and proof of address. We may request a deposit from you before allowing you to bid. We may refuse entry to a *Sale* to any person even if that person has completed a *Bidding Form*.

Bidding in person

You should come to our *Bidder* registration desk at the *Sale* venue and fill out a *Bidder* Registration Form on (or, if possible, before) the day of the *Sale*. The bidding number system is sometimes referred to as "paddle bidding". You will be issued with a large card (a "paddle") with a printed number on it. This will be attributed to you for the purposes of the *Sale*. Should you be a successful *Bidder* you will need to ensure that your number can be clearly seen by the *Auctioneer* and that it is your number which is identified as the *Buyer's*. You should not let anyone else use your paddle as all *Lots* will be invoiced to the name and address given on your *Bidder* Registration Form. Once an invoice is issued it will not be changed. If there is any doubt as to the *Hammer Price* of, or whether you are the successful *Bidder* of, a particular *Lot*, you must draw this to the attention of the *Auctioneer* before the next *Lot* is offered for *Sale*. At the end of the *Sale*, or when you have finished bidding please return your paddle to the *Bidder* registration desk.

Bidding by telephone (only available on lots with a low estimate greater than £400)

If you wish to bid at the *Sale* by telephone, please complete a Telephone *Bidding Form*, which is available from our offices or in the *Catalogue*. Please then return it to the office responsible for the *Sale* at least 24 hours in advance of the *Sale*. It is your responsibility to check with our Bids Office that your bid has been received. Telephone calls will be recorded. The telephone bidding facility is a discretionary service and may not be available in relation to all *Lots*. We will not be responsible for bidding on your behalf if you are unavailable at the time of the *Sale* or if the telephone connection is interrupted during bidding. Please contact us for further details.

Bidding by post or fax

Absentee *Bidding Forms* can be found in the back of this *Catalogue* and should be completed and sent to the office responsible for the *Sale*. It is in your interests to return your form as soon as possible, as if two or more *Bidders* submit identical bids for a *Lot*, the first bid received takes preference. In any event, all bids should be received at least 24 hours before the start of the *Sale*. Please check your Absentee *Bidding Form* carefully before returning it to us, fully completed and signed by you. It is your responsibility to check with our Bids Office that your bid has been received. This additional service is complimentary and is confidential. Such bids are made at your own risk and we cannot accept liability for our failure to receive and/or place any such bids. All bids made on your behalf will be made at the lowest level possible subject to *Reserves* and other bids made for the *Lot*. Where appropriate your bids will be rounded down to the nearest amount consistent with the *Auctioneer's* bidding increments. New *Bidders* must also provide proof of identity and address when submitting bids. Failure to do this will result in your bid not being placed.

Bidding via the internet

Please visit our *Website* at <http://www.bonhams.com> for details of how to bid via the internet.

Bidding through an agent

Bids will be accepted as placed on behalf of the person named as the principal on the *Bidding Form* although we may refuse to accept bids from an agent on behalf of a principal and will require written confirmation from the principal confirming the agent's authority to bid. Nevertheless, as the *Bidding Form* explains, any person placing a bid as agent on behalf of another (whether or not he has disclosed that fact or the identity of his principal) will be jointly and severally liable with the principal to the *Seller* and to *Bonhams* under any contract resulting from the acceptance of a bid. Subject to the above, please let us know if you are acting on behalf of another person when bidding for *Lots* at the *Sale*.

Equally, please let us know if you intend to nominate another person to bid on your behalf at the *Sale* unless this is to be carried out by us pursuant to a Telephone or Absentee *Bidding Form* that you have completed. If we do not approve the agency arrangements in writing before the *Sale*, we are entitled to assume that the person bidding at the *Sale* is bidding on his own behalf. Accordingly, the person bidding at the *Sale* will be the *Buyer* and will be liable to pay the *Hammer Price* and *Buyer's Premium* and associated charges. If we approve the

identity of your client in advance, we will be in a position to address the invoice to your principal rather than you. We will require proof of the agent's client's identity and residence in advance of any bids made by the agent on his behalf. Please refer to our *Conditions of Business* and contact our Customer Services Department for further details.

6. CONTRACTS BETWEEN THE BUYER AND SELLER AND THE BUYER AND BONHAMS

On the *Lot* being knocked down to the *Buyer*, a *Contract for Sale* of the *Lot* will be entered into between the *Seller* and the *Buyer* on the terms of the *Contract for Sale* set out in Appendix 1 at the back of the *Catalogue*. You will be liable to pay the *Purchase Price*, which is the *Hammer Price* plus any applicable *VAT*. At the same time, a separate contract is also entered into between us as *Auctioneers* and the *Buyer*. This is our *Buyer's Agreement*, the terms of which are set out in Appendix 2 at the back of the *Catalogue*. Please read the terms of the *Contract for Sale* and our *Buyer's Agreement* contained in the *Catalogue* in case you are the successful *Bidder*. We may change the terms of either or both of these agreements in advance of their being entered into, by setting out different terms in the *Catalogue* and/or by placing an insert in the *Catalogue* and/or by notices at the *Sale* venue and/or by oral announcements before and during the *Sale*. You should be alert to this possibility of changes and ask if there have been any.

7. BUYER'S PREMIUM AND OTHER CHARGES PAYABLE BY THE BUYER

Under the *Buyer's Agreement*, a premium (the *Buyer's Premium*) is payable to us by the *Buyer* in accordance with the terms of the *Buyer's Agreement* and at rates set out below, calculated by reference to the *Hammer Price* and payable in addition to it. Storage charges and *Expenses* are also payable by the *Buyer* as set out in the *Buyer's Agreement*. All the sums payable to us by the *Buyer* are subject to *VAT*. For this *Sale* the following rates of *Buyer's Premium* will be payable by *Buyers* of *Lots*:

25% up to £25,000 of the *Hammer Price*
20% from £25,001 of the *Hammer Price*
12% from £500,001 of the *Hammer Price*

On certain *Lots*, which will be marked "AR" in the *Catalogue* and which are sold for a *Hammer Price* of €1,000 or greater (converted into the currency of the *Sale* using the European Central Bank Reference rate prevailing on the date of the *Sale*), the *Additional Premium* will be payable to us by the *Buyer* to cover our *Expenses* relating to the payment of royalties under the Artists Resale Right Regulations 2006. The *Additional Premium* will be a percentage of the amount of the *Hammer Price* calculated in accordance with the table below, and shall not exceed €12,500 (converted into the currency of the *Sale* using the European Central Bank Reference rate prevailing on the date of the *Sale*).

<i>Hammer Price</i>	Percentage amount
From €0 to €50,000	4%
From €50,000.01 to €200,000	3%
From €200,000.01 to €350,000	1%
From €350,000.01 to €500,000	0.5%
Exceeding €500,000	0.25%

8. VAT

The prevailing rate of *VAT* at the time of going to press is 20%, but this is subject to government change and the rate payable will be the rate in force on the date of the *Sale*.

The following symbols are used to denote that *VAT* is due on the *Hammer Price* and *Buyer's Premium*:

- † *VAT* at the prevailing rate on *Hammer Price* and *Buyer's Premium*
- Ω *VAT* on imported items at the prevailing rate on *Hammer Price* and *Buyer's Premium*
- * *VAT* on imported items at a preferential rate of 5% on *Hammer Price* and the prevailing rate on *Buyer's Premium*

- G Gold bullion exempt from *VAT* on the *Hammer Price* and subject to *VAT* at the prevailing rate on the *Buyer's Premium*
- Zero rated for *VAT*, no *VAT* will be added to the *Hammer Price* or the *Buyer's Premium*
- α *Buyers* from within the EU: *VAT* is payable at the prevailing rate on just the *Buyer's Premium* (NOT the *Hammer Price*). *Buyers* from outside the EU: *VAT* is payable at the prevailing rate on both *Hammer Price* and *Buyer's Premium*. If a *Buyer*, having registered under a non-EU address, decides that the item is not to be exported from the EU, then he should advise *Bonhams* immediately.

In all other instances no *VAT* will be charged on the *Hammer Price*, but *VAT* at the prevailing rate will be added to *Buyer's Premium* which will be invoiced on a *VAT* inclusive basis.

9. PAYMENT

It is of critical importance that you ensure that you have readily available funds to pay the *Purchase Price* and the *Buyer's Premium* (plus *VAT* and any other charges and *Expenses* to us) in full before making a bid for the *Lot*. If you are a successful *Bidder*, payment will be due to us by 4.30 pm on the second working day after the *Sale* so that all sums are cleared by the eighth working day after the *Sale*. Unless agreed by us in advance payments made by anyone other than the registered *Buyer* will not be accepted. Payment will have to be by one of the following methods (all cheques should be made payable to *Bonhams 1793 Limited*). *Bonhams* reserves the right to vary the terms of payment at any time.

Sterling personal cheque drawn on a UK branch of a bank or building society: all cheques must be cleared before you can collect your purchases;

Bankers draft/building society cheque: if you can provide suitable proof of identity and we are satisfied as to the genuineness of the draft or cheque, we will allow you to collect your purchases immediately;

Cash: you may pay for *Lots* purchased by you at this *Sale* with notes, coins or travellers cheques in the currency in which the *Sale* is conducted (but not any other currency) provided that the total amount payable by you in respect of all *Lots* purchased by you at the *Sale* does not exceed £3,000, or the equivalent in the currency in which the *Sale* is conducted, at the time when payment is made. If the amount payable by you for *Lots* exceeds that sum, the balance must be paid otherwise than in coins, notes or travellers cheques;

Sterling travellers cheques: you may pay for *Lots* purchased by you at this *Sale* with travellers cheques, provided the total amount payable by you in respect of all *Lots* purchased by you at the *Sale* does not exceed £3,000. We will need to see your passport if you wish to pay using travellers cheques;

Bank transfer: you may electronically transfer funds to our *Trust Account*. If you do so, please quote your paddle number and invoice number as the reference. Our *Trust Account* details are as follows:

Bank: National Westminster Bank Plc
Address: PO Box 4RY
250 Regent Street
London W1A 4RY
Account Name: *Bonhams 1793 Limited Trust Account*
Account Number: 25563009
Sort Code: 56-00-27
IBAN Number: GB 33 NWBK 560027 25563009

If paying by bank transfer, the amount received after the deduction of any bank fees and/or conversion of the currency of payment to pounds sterling must not be less than the sterling amount payable, as set out on the invoice.

Debit cards: there is no additional charge for purchases made with personal debit cards, issued by a UK bank. Debit cards issued by an overseas bank, deferred and company debit cards and all credit cards will be subject to a 2% surcharge;

Union Pay cards: these are now accepted at our Knightsbridge and New Bond Street offices, when presented in person by the card holder. These cards are subject to a 2% surcharge.

Credit cards: Visa and Mastercard only. Please note there is a 2% surcharge on the total invoice value when payments are made using credit cards. It may be advisable to notify your card provider of your intended purchase in advance to reduce delays caused by us having to seek authority when you come to pay. If you have any questions with regard to payment, please contact our Customer Services Department.

10. COLLECTION AND STORAGE

The *Buyer* of a *Lot* will not be allowed to collect it until payment in full and in cleared funds has been made (unless we have made a special arrangement with the *Buyer*). For collection and removal of purchased *Lots*, please refer to *Sale Information* at the front of the *Catalogue*. Our offices are open 9.00am – 5pm Monday to Friday. Details relating to the collection of a *Lot*, the storage of a *Lot* and our *Storage Contractor* after the *Sale* are set out in the *Catalogue*.

11. SHIPPING

Please refer all enquiries to our shipping department on:
Tel: +44 (0)20 8963 2850/2852 Fax: +44 (0)20 8963 2805
Email: shipping@bonhams.com

12. EXPORT/TRADE RESTRICTIONS

It is your sole responsibility to comply with all export and import regulations relating to your purchases and also to obtain any relevant export and/or import licence(s). Export licences are issued by Arts Council England and application forms can be obtained from its Export Licensing Unit. The detailed provisions of the export licencing arrangements can be found on the ACE website <http://www.artscouncil.org.uk/what-we-do/supporting-museums/cultural-property/export-controls/export-licensing/> or by phoning ACE on +44 (0)20 7973 5188. The need for import licences varies from country to country and you should acquaint yourself with all relevant local requirements and provisions. The refusal of any import or export licence(s) or any delay in obtaining such licence(s) shall not permit the rescission of any *Sale* nor allow any delay in making full payment for the *Lot*. Generally, please contact our shipping department before the *Sale* if you require assistance in relation to export regulations.

13. CITES REGULATIONS

Please be aware that all *Lots* marked with the symbol Y are subject to CITES regulations when exporting these items outside the EU. These regulations may be found at <http://www.defra.gov.uk/ahvla-en/imports-exports/cites/> or may be requested from:

Animal Health and Veterinary Laboratories Agency (AHVLA)
Wildlife Licencing
Floor 1, Zone 17, Temple Quay House
2 The Square, Temple Quay
BRISTOL BS1 6EB
Tel: +44 (0) 117 372 8774

14. THE SELLERS AND/OR BONHAMS' LIABILITY

Other than any liability of the *Seller* to the *Buyer* of a *Lot* under the *Contract for Sale*, neither we nor the *Seller* are liable (whether in negligence or otherwise) for any error or misdescription or omission in any *Description* of a *Lot* or any *Estimate* in respect of it, whether contained in the *Catalogue* or otherwise, whether given orally or in writing and whether given before or during the *Sale*. Neither we nor the *Seller* will be liable for any loss of *Business*, profits, revenue or income, or for loss of reputation, or for disruption to *Business* or wasted time on the part of management or staff, or for indirect losses or consequential damages of any kind, irrespective in any case of the nature, volume or source of the loss or damage alleged to be suffered, and irrespective of whether the said loss or damage is caused by or claimed in respect of any negligence, other tort, breach of contract (if any) or statutory duty, restitutionary claim or otherwise. In any circumstances where we and/or the *Seller* are liable in relation to any *Lot* or

any *Description* or *Estimate* made of any *Lot*, or the conduct of any *Sale* in relation to any *Lot*, whether in damages, for an indemnity or contribution, or for a restitutionary remedy or otherwise, our and/or the *Seller's* liability (combined, if both we and the *Seller* are liable) will be limited to payment of a sum which will not exceed by way of maximum the amount of the *Purchase Price* of the *Lot* irrespective in any case of the nature, volume or source of any loss or damage alleged to be suffered or sum claimed as due, and irrespective of whether the liability arises from any negligence, other tort, breach of contract (if any) or statutory duty or otherwise. Nothing set out above will be construed as excluding or restricting (whether directly or indirectly) our liability or excluding or restricting any person's rights or remedies in respect of (i) fraud, or (ii) death or personal injury caused by our negligence (or by the negligence of any person under our control or for whom we are legally responsible), or (iii) acts or omissions for which we are liable under the Occupiers Liability Act 1957, or (iv) any other liability to the extent the same may not be excluded or restricted as a matter of law or (v) our undertakings under paragraphs 9 (in relation to specialist *Stamp* or *Book Sales* only) and 10 of the *Buyer's Agreement*. The same applies in respect of the *Seller*, as if references to us in this paragraph were substituted with references to the *Seller*.

15. BOOKS

As stated above, all *Lots* are sold on an "as is" basis, subject to all faults, imperfections and errors of *Description* save as set out below. However, you will be entitled to reject a *Book* in the circumstances set out in paragraph 11 of the *Buyers Agreement*. Please note that *Lots* comprising printed *Books*, unframed maps and bound manuscripts are not liable to VAT on the *Buyer's Premium*.

16. CLOCKS AND WATCHES

All *Lots* are sold "as is", and the absence of any reference to the condition of a clock or watch does not imply that the *Lot* is in good condition and without defects, repairs or restorations. Most clocks and watches have been repaired in the course of their normal lifetime and may now incorporate parts not original to them. Furthermore, *Bonhams* makes no representation or warranty that any clock or watch is in working order. As clocks and watches often contain fine and complex mechanisms, *Bidders* should be aware that a general service, change of battery or further repair work, for which the *Buyer* is solely responsible, may be necessary. *Bidders* should be aware that the importation of watches such as Rolex, Frank Muller and Corum into the United States is highly restricted. These watches may not be shipped to the USA and can only be imported personally.

17. FIREARMS – PROOF, CONDITION AND CERTIFICATION

Proof of Firearms

The term "proof exemption" indicates that a firearm has been examined at a Proof House, but not proved, as either (a) it was deemed of interest and not intended for use, or (b) ammunition was not available. In either case, the firearm must be regarded as unsafe to fire unless subsequently proved. Firearms proved for Black Powder should not be used with smokeless ammunition.

The term "Certificate of Unprovability" indicates that a firearm has been examined at a Proof House and is deemed both unsuitable for proof and use. Reproof is required before any such firearm is to be used.

Guns Sold as Parts

Barrels of guns sold as parts will only be made available for sleeving and measurements once rendered unserviceable according to the Gun Barrel Proof Act of 1968 to 1978 and the Rules of Proof.

Condition of Firearms

Comment in this *Catalogue* is restricted, in general, to exceptional condition and to those defects that might affect the immediate safety of a firearm in normal use. An intending *Bidder* unable to make technical examinations and assessments is recommended to seek advice from a gunmaker or from a

modern firearms specialist. All prospective *Bidders* are advised to consult the ° of bore and wall-thickness measurements posted in the saleroom and available from the department. *Bidders* should note that guns are stripped only where there is a strong indication of a mechanical malfunction. Stripping is not, otherwise, undertaken. Guns intended for use should be stripped and cleaned beforehand. Hammer guns should have their rebound mechanisms checked before use. The safety mechanisms of all guns must be tested before use. All measurements are approximate.

Original Gun Specifications Derived from Gunmakers

The Sporting Gun Department endeavours to confirm a gun's original specification and date of manufacture with makers who hold their original records.

Licensing Requirements

Firearms Act 1968 as amended

Bonhams is constantly reviewing its procedures and would remind you that, in the case of firearms or shotguns subject to certification, to conform with current legislation, *Bonhams* is required to see, as appropriate, your original registered firearms dealer's certificate / shot gun certificate / firearm certificate / museum firearms licence / Section 5 authority or import licence (or details of any exemption from which you may benefit, for instance Crown servant status) for the firearm(s) you have purchased prior to taking full payment of the amount shown on your invoice. Should you not already be in possession of such an authority or exemption, you are required to initially pay a deposit of 95% of the total invoice with the balance of 5% payable on presentation of your valid certificate or licence showing your authority to hold the firearm(s) concerned.

Please be advised that if a successful *Bidder* is then unable to produce the correct paperwork, the *Lot(s)* will be reoffered by *Bonhams* in the next appropriate *Sale*, on standard terms for *Sellers*, and you will be responsible for any loss incurred by *Bonhams* on the original *Lot* to you.

In the case of RFD certificates and Section 5 authorities, we wish to keep an up-to-date copy on file. Please supply us with a Fax or photocopy. It would be helpful if you could send us an updated copy whenever your certificate or authority is renewed or changed.

Lots marked 'S1' and bearing red labels are Section 1 firearms and require a valid British Firearms certificate, RFD Licence or import licence.

Lots marked 'S2' and bearing blue labels are Section 2 firearms and require a valid British Shotgun certificate, RFD licence or import licence.

Lots marked 'S5' and bearing specially marked red labels are Section 5 prohibited firearms and require a valid Section 5 Authority or import licence.

Lots marked with a 'S58' and bearing yellow labels are for obsolete calibres and no licence is required unless ammunition is held.

Unmarked *Lots* require no licence.

Please do not hesitate to contact the Modern Sporting Gun Department should you have any queries.

Taxidermy and Related Items

As a *Seller* of these articles, *Bonhams* undertakes to comply fully with Cites and DEFRA regulations. *Buyers* are advised to inform themselves of all such regulations and should expect the exportation of items to take some time to arrange.

18. FURNITURE

Upholstered Furniture

Whilst we take every care in cataloguing furniture which has been upholstered we offer no *Guarantee* as to the originality of the wood covered by fabric or upholstery.

19. JEWELLERY

~ Ruby and Jadeite

Ruby and jadeite gemstones of Burmese (Myanmar) origin may not be imported into the US. Rubies and jadeite of non-Burmese origin require certification before import into the US and it is the *Buyer's* responsibility to obtain all relevant and required export/import licences, certificates and documentation before shipping. Failure by the *Buyer* to successfully import goods into the US does not constitute grounds for non payment or cancellation of *Sale*. *Bonhams* will not be responsible for any additional costs in this regard howsoever incurred.

Gemstones

Historically many gemstones have been subjected to a variety of treatments to enhance their appearance. Sapphires and rubies are routinely heat treated to improve their colour and clarity, similarly emeralds are frequently treated with oils or resin for the same purpose. Other treatments such as staining, irradiation or coating may have been used on other gemstones. These treatments may be permanent, whilst others may need special care or re-treatment over the years to retain their appearance. *Bidders* should be aware that *Estimates* assume that gemstones may have been subjected to such treatments. A number of laboratories issue certificates that give more detailed *Descriptions* of gemstones. However there may not be consensus between different laboratories on the degrees, or types of treatment for any particular gemstone. In the event that *Bonhams* has been given or has obtained certificates for any *Lot* in the *Sale* these certificates will be disclosed in the *Catalogue*. Although, as a matter of policy, *Bonhams* endeavours to provide certificates from recognised laboratories for certain gemstones, it is not feasible to obtain certificates for each *Lot*. In the event that no certificate is published in the *Catalogue*, *Bidders* should assume that the gemstones may have been treated. Neither *Bonhams* nor the *Seller* accepts any liability for contradictions or differing certificates obtained by *Buyers* on any *Lots* subsequent to the *Sale*.

Estimated Weights

If a stone(s) weight appears within the body of the *Description* in capital letters, the stone(s) has been unmounted and weighed by *Bonhams*. If the weight of the stone(s) is stated to be approximate and does not appear in capital letters, the stone(s) has been assessed by us within its/their settings, and the stated weight is a statement of our opinion only. This information is given as a guide and *Bidders* should satisfy themselves with regard to this information as to its accuracy.

Signatures

1. A diamond brooch, by Kutchinsky

When the maker's name appears in the title, in *Bonhams'* opinion the piece is by that maker.

2. A diamond brooch, signed Kutchinsky

Has a signature that, in *Bonhams'* opinion, is authentic but may contain gemstones that are not original, or the piece may have been altered.

3. A diamond brooch, mounted by Kutchinsky

Has been created by the jeweller, in *Bonhams'* opinion, but using stones or designs supplied by the client.

20. PHOTOGRAPHS

Explanation of Catalogue Terms

- "Bill Brandt": in our opinion a work by the artist.
- "Attributed to Bill Brandt": in our opinion probably a work by the artist, but less certainty to authorship is expressed than in the preceding category.
- "Signed and/or titled and/or dated and/or inscribed": in our opinion the signature and/or title and/or date and/or inscription are in the artist's hand.
- "Signed and/or titled and/or dated and/or inscribed in another hand": in our opinion the signature and/or title and/or date and/or inscription have been added by another hand.

- The date given is that of the image (negative). Where no further date is given, this indicates that the photographic print is vintage (the term "vintage" may also be included in the *Lot Description*). A vintage photograph is one which was made within approximately 5-10 years of the negative. Where a second, later date appears, this refers to the date of printing. Where the exact printing date is not known, but understood to be later, "printed later" will appear in the *Lot Description*.
- Unless otherwise specified, dimensions given are those of the piece of paper on which the image is printed, including any margins. Some photographs may appear in the *Catalogue* without margins illustrated.
- All photographs are sold unframed unless stated in the *Lot Description*.

21. PICTURES

Explanation of Catalogue Terms

The following terms used in the *Catalogue* have the following meanings but are subject to the general provisions relating to *Descriptions* contained in the *Contract for Sale*:

- "Jacopo Bassano": in our opinion a work by the artist. When the artist's forename(s) is not known, a series of asterisks, followed by the surname of the artist, whether preceded by an initial or not, indicates that in our opinion the work is by the artist named;
- "Attributed to Jacopo Bassano": in our opinion probably a work by the artist but less certainty as to authorship is expressed than in the preceding category;
- "Studio/Workshop of Jacopo Bassano": in our opinion a work by an unknown hand in a studio of the artist which may or may not have been executed under the artist's direction;
- "Circle of Jacopo Bassano": in our opinion a work by a hand closely associated with a named artist but not necessarily his pupil;
- "Follower of Jacopo Bassano": in our opinion a work by a painter working in the artist's style, contemporary or nearly contemporary, but not necessarily his pupil;
- "Manner of Jacopo Bassano": in our opinion a work in the style of the artist and of a later date;
- "After Jacopo Bassano": in our opinion, a copy of a known work of the artist;
- "Signed and/or dated and/or inscribed": in our opinion the signature and/or date and/or inscription are from the hand of the artist;
- "Bears a signature and/or date and/or inscription": in our opinion the signature and/or date and/or inscription have been added by another hand.

22. PORCELAIN AND GLASS

Damage and Restoration

For your guidance, in our *Catalogues* we detail, as far as practicable, recorded all significant defects, cracks and restoration. Such practicable *Descriptions* of damage cannot be definitive, and in providing *Condition Reports*, we cannot *Guarantee* that there are no other defects present which have not been mentioned. *Bidders* should satisfy themselves by inspection, as to the condition of each *Lot*. Please see the *Contract for Sale* printed in this *Catalogue*. Because of the difficulty in determining whether an item of glass has been repolished, in our *Catalogues* reference is only made to visible chips and cracks. No mention is made of repolishing, severe or otherwise.

23. VEHICLES

The Veteran Car Club of Great Britain

Dating Plates and Certificates

When mention is made of a Veteran Car Club Dating Plate or Dating Certificate in this *Catalogue*, it should be borne in mind that the Veteran Car Club of Great Britain using the services of Veteran Car Company Ltd, does from time to time, review cars already dated and, in some instances, where fresh evidence becomes available, the review can result in an alteration of date. Whilst the Club and Veteran Car Company Ltd make every effort to ensure accuracy, the date shown on the Dating Plate or Dating Certificate cannot be guaranteed as correct and intending purchasers should make their own enquiries as to the date of the car.

24. WINE

Lots which are lying under Bond and those liable to VAT may not be available for immediate collection.

Examining the wines

It is occasionally possible to provide a pre-*Sale* tasting for larger parcels (as defined below). This is generally limited to more recent and everyday drinking wines. Please contact the department for details.

It is not our policy to inspect every unopened case. In the case of wines older than 20 years the boxes will usually have been opened and levels and appearance noted in the *Catalogue* where necessary. You should make proper allowance for variations in ullage levels and conditions of corks, capsules and labels.

Corks and Ullages

Ullage refers to the space between the base of the cork and the wine. Ullage levels for Bordeaux shaped bottles are only normally noted when below the neck and for Burgundy, Alsace, German and Cognac shaped bottles when greater than 4 centimetres (cm). Acceptable ullage levels increase with age; generally acceptable levels are as follows:

Under 15 years old – into neck or less than 4cm
15 to 30 years old – top shoulder (ts) or up to 5cm
Over 30 years old – high shoulder (hs) or up to 6cm

It should be noted that ullages may change between publication of the *Catalogue* and the *Sale* and that corks may fail as a result of transporting the wine. We will only accept responsibility for *Descriptions* of condition at the time of publication of the *Catalogue* and cannot accept responsibility for any loss resulting from failure of corks either before or after this point.

Options to buy parcels

A parcel is a number of *Lots* of identical size of the same wine, bottle size and *Description*. The *Buyer* of any of these *Lots* has the option to accept some or all of the remaining *Lots* in the parcel at the same price, although such options will be at the *Auctioneer's* sole discretion. Absentee *Bidders* are, therefore, advised to bid on the first *Lot* in a parcel.

Wines in Bond

Wines lying in Bond are marked Δ and VAT is payable by the purchaser, at the standard rate, on the *Hammer Price*, unless the wines are to remain under Bond. *Buyers* requiring their wine to remain in Bond must notify *Bonhams* at the time of the *Sale*. The *Buyer* is then himself responsible for all duty, clearance VAT and other charges that may be payable thereon. All such *Lots* must be transferred or collected within two weeks of the *Sale*.

Buyers outside the UK must be aware that any forwarding agent appointed to export their purchases must have a movement certificate for *Lots* to be released under Bond.

Bottling Details and Case Terms

The following terms used in the *Catalogue* have the following meanings:

CB – Château bottled
DB – Domaine bottled
EstB – Estate bottled
BB – Bordeaux bottled
BE – Belgian bottled
FB – French bottled
GB – German bottled
OB – Oporto bottled
UK – United Kingdom bottled
owc – original wooden case
iwc – individual wooden case
oc – original carton

SYMBOLS

THE FOLLOWING SYMBOLS ARE USED TO DENOTE

- Y Subject to CITES regulations when exporting these items outside the EU, see clause 13.
- W Objects displayed with a w will be located in the Bonhams Warehouse and will only be available for collection from this location.
- ≈ Please note that as a result of recent legislation ruby and jadeite gem stones of Burmese (Myanmar) origin may not be imported into the US. Rubies and jadeite of non-Burmese origin require certification before import into the US.
- Δ Wines lying in Bond.
- AR An *Additional Premium* will be payable to us by the *Buyer* to cover our *Expenses* relating to payment of royalties under the Artists Resale Right Regulations 2006. See clause 7 for details.
- The *Seller* has been guaranteed a minimum price for the *Lot*, either by *Bonhams* or a third party. This may take the form of an irrevocable bid by a third party, who may make a financial gain on a successful *Sale* or a financial loss if unsuccessful.
- ▲ *Bonhams* owns the *Lot* either wholly or partially or may otherwise have an economic interest.

•, †, *, G, Ω, α see clause 8, VAT, for details.

DATA PROTECTION – USE OF YOUR INFORMATION

Where we obtain any personal information about you, we shall only use it in accordance with the terms of our Privacy Policy (subject to any additional specific consent(s) you may have given at the time your information was disclosed). A copy of our Privacy Policy can be found on our Website www.bonhams.com or requested by post from Customer Services Department, 101 New Bond Street, London, W1S 1SR or by email from info@bonhams.com

APPENDIX 1

CONTRACT FOR SALE

IMPORTANT: These terms may be changed in advance of the *Sale* of the *Lot* to you, by the setting out of different terms in the *Catalogue* for the *Sale* and/or by placing an insert in the *Catalogue* and/or by notices at the *Sale* venue and/or by oral announcements before and during the *Sale* at the *Sale* venue. You should be alert to this possibility of changes and ask in advance of bidding if there have been any.

Under this contract the *Seller's* liability in respect of the quality of the *Lot*, its fitness for any purpose and its conformity with any *Description* is limited. You are strongly advised to examine the *Lot* for yourself and/or obtain an independent examination of it before you buy it.

1 THE CONTRACT

- 1.1 These terms govern the *Contract for Sale* of the *Lot* by the *Seller* to the *Buyer*.
- 1.2 The Definitions and Glossary contained in Appendix 3 in the *Catalogue* are incorporated into this *Contract for Sale* and a separate copy can also be provided by *Bonhams* on request. Where words and phrases are used which are in the List of Definitions, they are printed in italics.
- 1.3 The *Seller* sells the *Lot* as the principal to the *Contract for Sale*, such contract being made between the *Seller* and you through *Bonhams* which acts in the sole capacity as the *Seller's* agent and not as an additional principal. However, if the *Catalogue* states that *Bonhams* sells the *Lot* as principal, or such a statement is made by an announcement by the *Auctioneer*, or by a notice at the *Sale*, or an insert in the *Catalogue*, then *Bonhams* is the *Seller* for the purposes of this agreement.
- 1.4 The contract is made on the fall of the *Auctioneer's* hammer in respect of the *Lot* when it is knocked down to you.

2 SELLER'S UNDERTAKINGS

- 2.1 The *Seller* undertakes to you that:
- 2.1.1 the *Seller* is the owner of the *Lot* or is duly authorised to sell the *Lot* by the owner;
- 2.1.2 save as disclosed in the *Entry* for the *Lot* in the *Catalogue*, the *Seller* sells the *Lot* with full title guarantee or, where the *Seller* is an executor, trustee, liquidator, receiver or administrator, with whatever right, title or interest he may have in the *Lot*;
- 2.1.3 except where the *Sale* is by an executor, trustee, liquidator, receiver or administrator the *Seller* is both legally entitled to sell the *Lot*, and legally capable of conferring on you quiet possession of the *Lot* and that the *Sale* conforms in every respect with the terms implied by the Sale of Goods Act 1979, Sections 12(1) and 12(2) (see the Definitions and Glossary);
- 2.1.4 the *Seller* has complied with all requirements, legal or otherwise, relating to any export or import of the *Lot*, and all duties and taxes in respect of the export or import of the *Lot* have (unless stated to the contrary in the *Catalogue* or announced by the *Auctioneer*) been paid and, so far as the *Seller* is aware, all third parties have complied with such requirements in the past;
- 2.1.5 subject to any alterations expressly identified as such made by announcement or notice at the *Sale* venue or by the *Notice to Bidders* or by an insert in the *Catalogue*, the *Lot* corresponds with the *Contractual Description* of the *Lot*, being that part of the *Entry* about the *Lot* in the *Catalogue* which is in bold letters and (except for colour) with any photograph of the *Lot* in the *Catalogue* and the contents of any *Condition Report* which has been provided to the *Buyer*.

3 DESCRIPTIONS OF THE LOT

- 3.1 Paragraph 2.1.5 sets out what is the *Contractual Description* of the *Lot*. In particular, the *Lot* is not sold as corresponding with that part of the *Entry* in the *Catalogue* which is not printed in bold letters, which merely sets out (on the *Seller's* behalf) *Bonhams'* opinion about the *Lot* and which is not part of the *Contractual Description* upon which the *Lot* is sold. Any statement or representation other than that part of the *Entry* referred to in paragraph 2.1.5 (together with any express alteration to it as referred to in paragraph 2.1.5), including any *Description* or *Estimate*, whether made orally or in writing, including in the *Catalogue* or on *Bonhams' Website*, or by conduct, or otherwise, and whether by or on behalf of the *Seller* or *Bonhams* and whether made prior to or during the *Sale*, is not part of the *Contractual Description* upon which the *Lot* is sold.
- 3.2 Except as provided in paragraph 2.1.5, the *Seller* does not make or give and does not agree to make or give any contractual promise, undertaking, obligation, guarantee, warranty, or representation of fact, or undertake any duty of care, in relation to any *Description* of the *Lot* or any *Estimate* in relation to it, nor of the accuracy or completeness of any *Description* or *Estimate* which may have been made by or on behalf of the *Seller* including by *Bonhams*. No such *Description* or *Estimate* is incorporated into this *Contract for Sale*.

4 FITNESS FOR PURPOSE AND SATISFACTORY QUALITY

- 4.1 The *Seller* does not make and does not agree to make any contractual promise, undertaking, obligation, guarantee, warranty, or representation of fact in relation to the satisfactory quality of the *Lot* or its fitness for any purpose.

- 4.2 The *Seller* will not be liable for any breach of any undertaking, whether implied by the Sale of Goods Act 1979 or otherwise, as to the satisfactory quality of the *Lot* or its fitness for any purpose.

5 RISK, PROPERTY AND TITLE

- 5.1 Risk in the *Lot* passes to you when it is knocked down to you on the fall of the *Auctioneer's* hammer in respect of the *Lot*. The *Seller* will not be responsible thereafter for the *Lot* prior to you collecting it from *Bonhams* or the *Storage Contractor*, with whom you have separate contract(s) as *Buyer*. You will indemnify the *Seller* and keep the *Seller* fully indemnified from and against all claims, proceedings, costs, expenses and losses arising in respect of any injury, loss and damage caused to the *Lot* after the fall of the *Auctioneer's* hammer until you obtain full title to it.
- 5.2 Title to the *Lot* remains in and is retained by the *Seller* until the *Purchase Price* and all other sums payable by you to *Bonhams* in relation to the *Lot* have been paid in full to, and received in cleared funds by, *Bonhams*.

6 PAYMENT

- 6.1 Your obligation to pay the *Purchase Price* arises when the *Lot* is knocked down to you on the fall of the *Auctioneer's* hammer in respect of the *Lot*.
- 6.2 Time will be of the essence in relation to payment of the *Purchase Price* and all other sums payable by you to *Bonhams*. Unless agreed in writing with you by *Bonhams* on the *Seller's* behalf (in which case you must comply with the terms of that agreement), all such sums must be paid to *Bonhams* by you in the currency in which the *Sale* was conducted by not later than 4.30pm on the second working day following the *Sale* and you must ensure that the funds are cleared by the seventh working day after the *Sale*. Payment must be made to *Bonhams* by one of the methods stated in the *Notice to Bidders* unless otherwise agreed with you in writing by *Bonhams*. If you do not pay any sums due in accordance with this paragraph, the *Seller* will have the rights set out in paragraph 8 below.

7 COLLECTION OF THE LOT

- 7.1 Unless otherwise agreed in writing with you by *Bonhams*, the *Lot* will be released to you or to your order only when *Bonhams* has received cleared funds to the amount of the full *Purchase Price* and all other sums owed by you to the *Seller* and to *Bonhams*.
- 7.2 The *Seller* is entitled to withhold possession from you of any other *Lot* he has sold to you at the same or at any other *Sale* and whether currently in *Bonhams'* possession or not until payment in full and in cleared funds of the *Purchase Price* and all other sums due to the *Seller* and/or *Bonhams* in respect of the *Lot*.
- 7.3 You will collect and remove the *Lot* at your own expense from *Bonhams'* custody and/ or control or from the *Storage Contractor's* custody in accordance with *Bonhams'* instructions or requirements.
- 7.4 You will be wholly responsible for packing, handling and transport of the *Lot* on collection and for complying with all import or export regulations in connection with the *Lot*.
- 7.5 You will be wholly responsible for any removal, storage or other charges or *Expenses* incurred by the *Seller* if you do not remove the *Lot* in accordance with this paragraph 7 and will indemnify the *Seller* against all charges, costs, including any legal costs and fees, *Expenses* and losses suffered by the *Seller* by reason of your failure to remove the *Lot* including any charges due under any *Storage Contract*. All such sums due to the *Seller* will be payable on demand.

8	FAILURE TO PAY FOR THE LOT	9	THE SELLER'S LIABILITY	10.3	If either party to the <i>Contract for Sale</i> is prevented from performing that party's respective obligations under the <i>Contract for Sale</i> by circumstances beyond its reasonable control or if performance of its obligations would by reason of such circumstances give rise to a significantly increased financial cost to it, that party will not, for so long as such circumstances prevail, be required to perform such obligations. This paragraph does not apply to the obligations imposed on you by paragraph 6.
8.1	If the <i>Purchase Price</i> for a <i>Lot</i> is not paid to <i>Bonhams</i> in full in accordance with the <i>Contract for Sale</i> the <i>Seller</i> will be entitled, with the prior written agreement of <i>Bonhams</i> but without further notice to you, to exercise one or more of the following rights (whether through <i>Bonhams</i> or otherwise):	9.1	The <i>Seller</i> will not be liable for any injury, loss or damage caused by the <i>Lot</i> after the fall of the <i>Auctioneer's</i> hammer in respect of the <i>Lot</i> .	10.4	Any notice or other communication to be given under the <i>Contract for Sale</i> must be in writing and may be delivered by hand or sent by first class post or air mail or fax transmission, if to the <i>Seller</i> , addressed <i>c/o Bonhams</i> at its address or fax number in the <i>Catalogue</i> (marked for the attention of the Company Secretary), and if to you to the address or fax number of the <i>Buyer</i> given in the <i>Bidding Form</i> (unless notice of any change of address is given in writing). It is the responsibility of the sender of the notice or communication to ensure that it is received in a legible form within any applicable time period.
8.1.1	to terminate immediately the <i>Contract for Sale</i> of the <i>Lot</i> for your breach of contract;	9.2	Subject to paragraph 9.3 below, except for breach of the express undertaking provided in paragraph 2.1.5, the <i>Seller</i> will not be liable for any breach of any term that the <i>Lot</i> will correspond with any <i>Description</i> applied to it by or on behalf of the <i>Seller</i> , whether implied by the Sale of Goods Act 1979 or otherwise.	10.5	If any term or any part of any term of the <i>Contract for Sale</i> is held to be unenforceable or invalid, such unenforceability or invalidity will not affect the enforceability and validity of the remaining terms or the remainder of the relevant term.
8.1.2	to resell the <i>Lot</i> by auction, private treaty or any other means on giving seven days' written notice to you of the intention to resell;	9.3	Unless the <i>Seller</i> sells the <i>Lot</i> in the course of a <i>Business</i> and the <i>Buyer</i> buys it as a <i>Consumer</i> ,	10.6	References in the <i>Contract for Sale</i> to <i>Bonhams</i> will, where appropriate, include reference to <i>Bonhams'</i> officers, employees and agents.
8.1.3	to retain possession of the <i>Lot</i> ;	9.3.1	the <i>Seller</i> will not be liable (whether in negligence, other tort, breach of contract or statutory duty or in restitution or under the Misrepresentation Act 1967, or in any other way) for any lack of conformity with, or inaccuracy, error, misdescription or omission in any <i>Description</i> of the <i>Lot</i> or any <i>Entry</i> or <i>Estimate</i> in relation to the <i>Lot</i> made by or on behalf of the <i>Seller</i> (whether made in writing, including in the <i>Catalogue</i> , or on the <i>Website</i> , or orally, or by conduct or otherwise) and whether made before or after this agreement or prior to or during the <i>Sale</i> ;	10.7	The headings used in the <i>Contract for Sale</i> are for convenience only and will not affect its interpretation.
8.1.4	to remove and store the <i>Lot</i> at your expense;	9.3.2	the <i>Seller</i> will not be liable for any loss of <i>Business</i> , <i>Business</i> profits or revenue or income or for loss of reputation or for disruption to <i>Business</i> or wasted time on the part of the <i>Buyer</i> or of the <i>Buyer's</i> management or staff or, for any indirect losses or consequential damages of any kind, irrespective in any case of the nature, volume or source of the loss or damage alleged to be suffered, and irrespective of whether the said loss or damage is caused by or claimed in respect of any negligence, other tort, breach of contract, statutory duty, restitutionary claim or otherwise;	10.8	In the <i>Contract for Sale</i> "including" means "including, without limitation".
8.1.5	to take legal proceedings against you for any sum due under the <i>Contract for Sale</i> and/or damages for breach of contract;	9.3.3	in any circumstances where the <i>Seller</i> is liable to you in respect of the <i>Lot</i> , or any act, omission, statement, or representation in respect of it, or this agreement or its performance, and whether in damages, for an indemnity or contribution or for a restitutionary remedy or in any way whatsoever, the <i>Seller's</i> liability will be limited to payment of a sum which will not exceed by way of maximum the amount of the <i>Purchase Price</i> of the <i>Lot</i> irrespective in any case of the nature, volume or source of any loss or damage alleged to be suffered or sum claimed as due, and irrespective of whether the liability arises from any negligence, other tort, breach of contract, statutory duty, bailee's duty, restitutionary claim or otherwise.	10.9	References to the singular will include reference to the plural (and vice versa) and reference to any one gender will include reference to the other genders.
8.1.6	to be paid interest on any monies due (after as well as before judgement or order) at the annual rate of 5% per annum above the base rate of National Westminster Bank Plc from time to time to be calculated on a daily basis from the date upon which such monies become payable until the date of actual payment;	9.4	Nothing set out in paragraphs 9.1 to 9.3 above will be construed as excluding or restricting (whether directly or indirectly) any person's liability or excluding or restricting any person's rights or remedies in respect of (i) fraud, or (ii) death or personal injury caused by the <i>Seller's</i> negligence (or any person under the <i>Seller's</i> control or for whom the <i>Seller</i> is legally responsible), or (iii) acts or omissions for which the <i>Seller</i> is liable under the Occupiers Liability Act 1957, or (iv) any other liability to the extent the same may not be excluded or restricted as a matter of law.	10.10	Reference to a numbered paragraph is to a paragraph of the <i>Contract for Sale</i> .
8.1.7	to repossess the <i>Lot</i> (or any part thereof) which has not become your property, and for this purpose (unless the <i>Buyer</i> buys the <i>Lot</i> as a <i>Consumer</i> from the <i>Seller</i> selling in the course of a <i>Business</i>) you hereby grant an irrevocable licence to the <i>Seller</i> by himself and to his servants or agents to enter upon all or any of your premises (with or without vehicles) during normal <i>Business</i> hours to take possession of the <i>Lot</i> or part thereof;	10	MISCELLANEOUS	10.11	Save as expressly provided in paragraph 10.12 nothing in the <i>Contract for Sale</i> confers (or purports to confer) on any person who is not a party to the <i>Contract for Sale</i> any benefit conferred by, or the right to enforce any term of, the <i>Contract for Sale</i> .
8.1.8	to retain possession of any other property sold to you by the <i>Seller</i> at the <i>Sale</i> or any other auction or by private treaty until all sums due under the <i>Contract for Sale</i> shall have been paid in full in cleared funds;	11	GOVERNING LAW	10.12	Where the <i>Contract for Sale</i> confers an immunity from, and/or an exclusion or restriction of, the responsibility and/or liability of the <i>Seller</i> , it will also operate in favour and for the benefit of <i>Bonhams</i> , <i>Bonhams'</i> holding company and the subsidiaries of such holding company and the successors and assigns of <i>Bonhams</i> and of such companies and of any officer, employee and agent of <i>Bonhams</i> and such companies, each of whom will be entitled to rely on the relevant immunity and/or exclusion and/or restriction within and for the purposes of Contracts (Rights of Third Parties) Act 1999, which enables the benefit of a contract to be extended to a person who is not a party to the contract, and generally at law.
8.1.9	to retain possession of, and on three months' written notice to sell, <i>Without Reserve</i> , any of your other property in the possession of the <i>Seller</i> and/or of <i>Bonhams</i> (as bailee for the <i>Seller</i>) for any purpose (including, without limitation, other goods sold to you) and to apply any monies due to you as a result of such <i>Sale</i> in satisfaction or part satisfaction of any amounts owed to the <i>Seller</i> or to <i>Bonhams</i> ; and	10.1	You may not assign either the benefit or burden of the <i>Contract for Sale</i> .	10.1	All transactions to which the <i>Contract for Sale</i> applies and all connected matters will be governed by and construed in accordance with the laws of that part of the United Kingdom where the <i>Sale</i> takes place and the <i>Seller</i> and you each submit to the exclusive jurisdiction of the courts of that part of the United Kingdom, save that the <i>Seller</i> may bring proceedings against you in any other court of competent jurisdiction to the extent permitted by the laws of the relevant jurisdiction. <i>Bonhams</i> has a complaints procedure in place.
8.1.10	so long as such goods remain in the possession of the <i>Seller</i> or <i>Bonhams</i> as its bailee, to rescind the contract for the <i>Sale</i> of any other goods sold to you by the <i>Seller</i> at the <i>Sale</i> or at any other auction or by private treaty and apply any monies received from you in respect of such goods in part or full satisfaction of any amounts owed to the <i>Seller</i> or to <i>Bonhams</i> by you.	10.2	The <i>Seller's</i> failure or delay in enforcing or exercising any power or right under the <i>Contract for Sale</i> will not operate or be deemed to operate as a waiver of his rights under it except to the extent of any express waiver given to you in writing. Any such waiver will not affect the <i>Seller's</i> ability subsequently to enforce any right arising under the <i>Contract for Sale</i> .		
8.2	You agree to indemnify the <i>Seller</i> against all legal and other costs of enforcement, all losses and other <i>Expenses</i> and costs (including any monies payable to <i>Bonhams</i> in order to obtain the release of the <i>Lot</i>) incurred by the <i>Seller</i> (whether or not court proceedings will have been issued) as a result of <i>Bonhams</i> taking steps under this paragraph 8 on a full indemnity basis together with interest thereon (after as well as before judgement or order) at the rate specified in paragraph 8.1.6 from the date upon which the <i>Seller</i> becomes liable to pay the same until payment by you.				
8.3	On any resale of the <i>Lot</i> under paragraph 8.1.2, the <i>Seller</i> will account to you in respect of any balance remaining from any monies received by him or on his behalf in respect of the <i>Lot</i> , after the payment of all sums due to the <i>Seller</i> and to <i>Bonhams</i> , within 28 days of receipt of such monies by him or on his behalf.				

APPENDIX 2

BUYER'S AGREEMENT

IMPORTANT: These terms may be changed in advance of the Sale of the Lot to you, by the setting out of different terms in the Catalogue for the Sale and/or by placing an insert in the Catalogue and/or by notices at the Sale venue and/or by oral announcements before and during the Sale at the Sale venue. You should be alert to this possibility of changes and ask in advance of bidding if there have been any.

1 THE CONTRACT

- 1.1 These terms govern the contract between *Bonhams* personally and the *Buyer*, being the person to whom a Lot has been knocked down by the *Auctioneer*.
- 1.2 The Definitions and Glossary contained in Appendix 3 to the Catalogue for the Sale are incorporated into this agreement and a separate copy can also be provided by us on request. Where words and phrases which are defined in the List of Definitions are used in this agreement, they are printed in italics. Reference is made in this agreement to information printed in the Notice to Bidders, printed in the Catalogue for the Sale, and where such information is referred to it is incorporated into this agreement.
- 1.3 Except as specified in paragraph 4 of the Notice to Bidders the Contract for Sale of the Lot between you and the Seller is made on the fall of the Auctioneer's hammer in respect of the Lot, when it is knocked down to you. At that moment a separate contract is also made between you and Bonhams on the terms in this Buyer's Agreement.
- 1.4 We act as agents for the Seller and are not answerable or personally responsible to you for any breach of contract or other default by the Seller, unless Bonhams sells the Lot as principal.
- 1.5 Our personal obligations to you are governed by this agreement and we agree, subject to the terms below, to the following obligations:
 - 1.5.1 we will, until the date and time specified in the Notice to Bidders or otherwise notified to you, store the Lot in accordance with paragraph 5;
 - 1.5.2 subject to any power of the Seller or us to refuse to release the Lot to you, we will release the Lot to you in accordance with paragraph 4 once you have paid to us, in cleared funds, everything due to us and the Seller;
 - 1.5.3 we will provide guarantees in the terms set out in paragraphs 9 and 10.
- 1.6 We do not make or give and do not agree to make or give any contractual promise, undertaking, obligation, Guarantee, warranty, representation of fact in relation to any Description of the Lot or any Estimate in relation to it, nor of the accuracy or completeness of any Description or Estimate which may have been made by us or on our behalf or by or on behalf of the Seller (whether made orally or in writing, including in the Catalogue or on Bonhams' Website, or by conduct, or otherwise), and whether made before or after this agreement or prior to or during the Sale. No such Description or Estimate is incorporated into this agreement between you and us. Any such Description or Estimate, if made by us or on our behalf, was (unless Bonhams itself sells the Lot as principal) made as agent on behalf of the Seller.

2 PERFORMANCE OF THE CONTRACT FOR SALE

You undertake to us personally that you will observe and comply with all your obligations and undertakings to the Seller under the Contract for Sale in respect of the Lot.

3 PAYMENT

- 3.1 Unless agreed in writing between you and us or as otherwise set out in the Notice to Bidders, you must pay to us by not later than 4.30pm on the second working day following the Sale:
 - 3.1.1 the Purchase Price for the Lot;
 - 3.1.2 a Buyer's Premium in accordance with the rates set out in the Notice to Bidders, and
 - 3.1.3 if the Lot is marked [AR], an Additional Premium which is calculated and payable in accordance with the Notice to Bidders together with VAT on that sum if applicable so that all sums due to us are cleared funds by the seventh working day after the Sale.
- 3.2 You must also pay us on demand any Expenses payable pursuant to this agreement.
- 3.3 All payments to us must be made in the currency in which the Sale was conducted, using, unless otherwise agreed by us in writing, one of the methods of payment set out in the Notice to Bidders. Our invoices will only be addressed to the registered Bidder unless the Bidder is acting as an agent for a named principal and we have approved that arrangement, in which case we will address the invoice to the principal.
- 3.4 Unless otherwise stated in this agreement all sums payable to us will be subject to VAT at the appropriate rate and VAT will be payable by you on all such sums.
- 3.5 We may deduct and retain for our own benefit from the monies paid by you to us the Buyer's Premium, the Commission payable by the Seller in respect of the Lot, any Expenses and VAT and any interest earned and/or incurred until payment to the Seller.
- 3.6 Time will be of the essence in relation to any payment payable to us. If you do not pay the Purchase Price, or any other sum due to us in accordance with this paragraph 3, we will have the rights set out in paragraph 7 below.
- 3.7 Where a number of Lots have been knocked down to you, any monies we receive from you will be applied firstly pro-rata to pay the Purchase Price of each Lot and secondly pro-rata to pay all amounts due to Bonhams.

4 COLLECTION OF THE LOT

- 4.1 Subject to any power of the Seller or us to refuse to release the Lot to you, once you have paid to us, in cleared funds, everything due to the Seller and to us, we will release the Lot to you or as you may direct us in writing. The Lot will only be released on production of a buyer collection document, obtained from our cashier's office.
- 4.2 You must collect and remove the Lot at your own expense by the date and time specified in the Notice to Bidders, or if no date is specified, by 4.30pm on the seventh day after the Sale.
- 4.3 For the period referred to in paragraph 4.2, the Lot can be collected from the address referred to in the Notice to Bidders for collection on the days and times specified in the Notice to Bidders. Thereafter, the Lot may be removed elsewhere for storage and you must enquire from us as to when and where you can collect it, although this information will usually be set out in the Notice to Bidders.

- 4.4 If you have not collected the Lot by the date specified in the Notice to Bidders, you authorise us, acting as your agent and on your behalf, to enter into a contract (the "Storage Contract") with the Storage Contractor for the storage of the Lot on the then current standard terms and conditions agreed between Bonhams and the Storage Contractor (copies of which are available on request). If the Lot is stored at our premises storage fees at our current daily rates (currently a minimum of £3 plus VAT per Lot per day) will be payable from the expiry of the period referred to in paragraph 4.2. These storage fees form part of our Expenses.
- 4.5 Until you have paid the Purchase Price and any Expenses in full the Lot will either be held by us as agent on behalf of the Seller or held by the Storage Contractor as agent on behalf of the Seller and ourselves on the terms contained in the Storage Contract.
- 4.6 You undertake to comply with the terms of any Storage Contract and in particular to pay the charges (and all costs of moving the Lot into storage) due under any Storage Contract. You acknowledge and agree that you will not be able to collect the Lot from the Storage Contractor's premises until you have paid the Purchase Price, any Expenses and all charges due under the Storage Contract.
- 4.7 You will be wholly responsible for packing, handling and transport of the Lot on collection and for complying with all import or export regulations in connection with the Lot.
- 4.8 You will be wholly responsible for any removal, storage, or other charges for any Lot not removed in accordance with paragraph 4.2, payable at our current rates, and any Expenses we incur (including any charges due under the Storage Contract), all of which must be paid by you on demand and in any event before any collection of the Lot by you or on your behalf.

5 STORING THE LOT

We agree to store the Lot until the earlier of your removal of the Lot or until the time and date set out in the Notice to Bidders, on the Sale Information Page or at the back of the catalogue (or if no date is specified, by 4.30pm on the seventh day after the Sale) and, subject to paragraphs 6 and 10, to be responsible as bailee to you for damage to or the loss or destruction of the Lot (notwithstanding that it is not your property before payment of the Purchase Price). If you do not collect the Lot before the time and date set out in the Notice to Bidders (or if no date is specified, by 4.30pm on the seventh day after the Sale) we may remove the Lot to another location, the details of which will usually be set out in the relevant section of the Catalogue. If you have not paid for the Lot in accordance with paragraph 3, and the Lot is moved to any third party's premises, the Lot will be held by such third party strictly to Bonhams' order and we will retain our lien over the Lot until we have been paid in full in accordance with paragraph 3.

6 RESPONSIBILITY FOR THE LOT

- 6.1 Only on the payment of the Purchase Price to us will title in the Lot pass to you. However under the Contract for Sale, the risk in the Lot passed to you when it was knocked down to you.
- 6.2 You are advised to obtain insurance in respect of the Lot as soon as possible after the Sale.

7	FAILURE TO PAY OR TO REMOVE THE LOT AND PART PAYMENTS	7.3	If you pay us only part of the sums due to us such payment shall be applied firstly to the <i>Purchase Price</i> of the <i>Lot</i> (or where you have purchased more than one <i>Lot</i> pro-rata towards the <i>Purchase Price</i> of each <i>Lot</i>) and secondly to the <i>Buyer's Premium</i> (or where you have purchased more than one <i>Lot</i> pro-rata to the <i>Buyer's Premium</i> on each <i>Lot</i>) and thirdly to any other sums due to us.	9.3	Paragraph 9 will not apply in respect of a <i>Forgery</i> if:
7.1	If all sums payable to us are not so paid in full at the time they are due and/or the <i>Lot</i> is not removed in accordance with this agreement, we will without further notice to you be entitled to exercise one or more of the following rights (without prejudice to any rights we may exercise on behalf of the <i>Seller</i>):	7.4	We will account to you in respect of any balance we hold remaining from any monies received by us in respect of any <i>Sale</i> of the <i>Lot</i> under our rights under this paragraph 7 after the payment of all sums due to us and/or the <i>Seller</i> within 28 days of receipt by us of all such sums paid to us.	9.3.1	the <i>Entry</i> in relation to the <i>Lot</i> contained in the <i>Catalogue</i> reflected the then accepted general opinion of scholars and experts or fairly indicated that there was a conflict of such opinion or reflected the then current opinion of an expert acknowledged to be a leading expert in the relevant field; or
7.1.1	to terminate this agreement immediately for your breach of contract;	9.3.2		9.3.2	it can be established that the <i>Lot</i> is a <i>Forgery</i> only by means of a process not generally accepted for use until after the date on which the <i>Catalogue</i> was published or by means of a process which it was unreasonable in all the circumstances for us to have employed.
7.1.2	to retain possession of the <i>Lot</i> ;	8	CLAIMS BY OTHER PERSONS IN RESPECT OF THE LOT	9.4	You authorise us to carry out such processes and tests on the <i>Lot</i> as we in our absolute discretion consider necessary to satisfy ourselves that the <i>Lot</i> is or is not a <i>Forgery</i> .
7.1.3	to remove, and/or store the <i>Lot</i> at your expense;	8.1	Whenever it becomes apparent to us that the <i>Lot</i> is the subject of a claim by someone other than you and other than the <i>Seller</i> (or that such a claim can reasonably be expected to be made), we may, at our absolute discretion, deal with the <i>Lot</i> in any manner which appears to us to recognise the legitimate interests of ourselves and the other parties involved and lawfully to protect our position and our legitimate interests. Without prejudice to the generality of the discretion and by way of example, we may:	9.5	If we are satisfied that a <i>Lot</i> is a <i>Forgery</i> we will (as principal) purchase the <i>Lot</i> from you and you will transfer the title to the <i>Lot</i> in question to us, with full title guarantee, free from any liens, charges, encumbrances and adverse claims, in accordance with the provisions of Sections 12(1) and 12(2) of the Sale of Goods Act 1979 and we will pay to you an amount equal to the sum of the <i>Purchase Price</i> , <i>Buyer's Premium</i> , <i>VAT</i> and <i>Expenses</i> paid by you in respect of the <i>Lot</i> .
7.1.4	to take legal proceedings against you for payment of any sums payable to us by you (including the <i>Purchase Price</i>) and/or damages for breach of contract;	8.1.1	retain the <i>Lot</i> to investigate any question raised or reasonably expected by us to be raised in relation to the <i>Lot</i> ; and/or	9.6	The benefit of paragraph 9 is personal to, and incapable of assignment by, you.
7.1.5	to be paid interest on any monies due to us (after as well as before judgement or order) at the annual rate of 5% per annum above the base lending rate of National Westminster Bank Plc from time to time to be calculated on a daily basis from the date upon which such monies become payable until the date of actual payment;	8.1.2	deliver the <i>Lot</i> to a person other than you; and/or	9.7	If you sell or otherwise dispose of your interest in the <i>Lot</i> , all rights and benefits under this paragraph will cease.
7.1.6	to repossess the <i>Lot</i> (or any part thereof) which has not become your property, and for this purpose (unless you buy the <i>Lot</i> as a <i>Consumer</i>) you hereby grant an irrevocable licence to us, by ourselves, our servants or agents, to enter upon all or any of your premises (with or without vehicles) during normal business hours to take possession of any <i>Lot</i> or part thereof;	8.1.3	commence interpleader proceedings or seek any other order of any court, mediator, arbitrator or government body; and/or	9.8	Paragraph 9 does not apply to a <i>Lot</i> made up of or including a Chinese painting or Chinese paintings, a motor vehicle or motor vehicles, a <i>Stamp</i> or <i>Stamps</i> or a <i>Book</i> or <i>Books</i> .
7.1.7	to sell the <i>Lot Without Reserve</i> by auction, private treaty or any other means on giving you three months' written notice of our intention to do so;	8.1.4	require an indemnity and/or security from you in return for pursuing a course of action agreed to by you.	10	OUR LIABILITY
7.1.8	to retain possession of any of your other property in our possession for any purpose (including, without limitation, other goods sold to you or with us for <i>Sale</i>) until all sums due to us have been paid in full;	8.2	The discretion referred to in paragraph 8.1:	10.1	We will not be liable whether in negligence, other tort, breach of contract or statutory duty or in restitution or under the Misrepresentation Act 1967 or in any other way for lack of conformity with or any inaccuracy, error, misdescription or omission in any <i>Description</i> of the <i>Lot</i> or any <i>Entry</i> or <i>Estimate</i> in respect of it, made by us or on our behalf or by or on behalf of the <i>Seller</i> (whether made in writing, including in the <i>Catalogue</i> , or on the <i>Bonhams' Website</i> , or orally, or by conduct or otherwise) and whether made before or after this agreement or prior to or during the <i>Sale</i> .
7.1.9	to apply any monies received from you for any purpose whether at the time of your default or at any time thereafter in payment or part payment of any sums due to us by you under this agreement;	8.2.1	may be exercised at any time during which we have actual or constructive possession of the <i>Lot</i> , or at any time after such possession, where the cessation of such possession has occurred by reason of any decision, order or ruling of any court, mediator, arbitrator or government body; and	10.2	Our duty to you while the <i>Lot</i> is at your risk and/or your property and in our custody and/or control is to exercise reasonable care in relation to it, but we will not be responsible for damage to the <i>Lot</i> or to other persons or things caused by:
7.1.10	on three months' written notice to sell, <i>Without Reserve</i> , any of your other property in our possession or under our control for any purpose (including other goods sold to you or with us for <i>Sale</i>) and to apply any monies due to you as a result of such <i>Sale</i> in payment or part payment of any amounts owed to us;	8.2.2	will not be exercised unless we believe that there exists a serious prospect of a good arguable case in favour of the claim.	10.2.1	handling the <i>Lot</i> if it was affected at the time of <i>Sale</i> to you by woodworm and any damage is caused as a result of it being affected by woodworm; or
7.1.11	refuse to allow you to register for a future <i>Sale</i> or to reject a bid from you at any future <i>Sale</i> or to require you to pay a deposit before any bid is accepted by us at any future <i>Sale</i> in which case we will be entitled to apply such deposit in payment or part payment, as the case may be, of the <i>Purchase Price</i> of any <i>Lot</i> of which you are the <i>Buyer</i> .	9	FORGERIES	10.2.2	changes in atmospheric pressure; nor will we be liable for:
7.2	You agree to indemnify us against all legal and other costs, all losses and all other <i>Expenses</i> (whether or not court proceedings will have been issued) incurred by us as a result of our taking steps under this paragraph 7 on a full indemnity basis together with interest thereon (after as well as before judgement or order) at the rate specified in paragraph 7.1.5 from the date upon which we become liable to pay the same until payment by you.	9.1	We undertake a personal responsibility for any <i>Forgery</i> in accordance with the terms of this paragraph 9.	10.2.3	damage to tension stringed musical instruments; or
		9.2	Paragraph 9 applies only if:	10.2.4	damage to gilded picture frames, plaster picture frames or picture frame glass; and if the <i>Lot</i> is or becomes dangerous, we may dispose of it without notice to you in advance in any manner we think fit and we will be under no liability to you for doing so.
		9.2.1	your name appears as the named person to whom the original invoice was made out by us in respect of the <i>Lot</i> and that invoice has been paid; and		
		9.2.2	you notify us in writing as soon as reasonably practicable after you have become aware that the <i>Lot</i> is or may be a <i>Forgery</i> , and in any event within one year after the <i>Sale</i> , that the <i>Lot</i> is a <i>Forgery</i> ; and		
		9.2.3	within one month after such notification has been given, you return the <i>Lot</i> to us in the same condition as it was at the time of the <i>Sale</i> , accompanied by written evidence that the <i>Lot</i> is a <i>Forgery</i> and details of the <i>Sale</i> and <i>Lot</i> number sufficient to identify the <i>Lot</i> .		

10.3.1 We will not be liable to you for any loss of *Business*, *Business* profits, revenue or income or for loss of *Business* reputation or for disruption to *Business* or wasted time on the part of the *Buyer's* management or staff or, if you are buying the *Lot* in the course of a *Business*, for any indirect losses or consequential damages of any kind, irrespective in any case of the nature, volume or source of the loss or damage alleged to be suffered, and irrespective of whether the said loss or damage is caused by or claimed in respect of any negligence, other tort, breach of contract, statutory duty, bailee's duty, a restitutionary claim or otherwise.

10.3.2 Unless you buy the *Lot* as a *Consumer*, in any circumstances where we are liable to you in respect of a *Lot*, or any act, omission, statement, representation in respect of it, or this agreement or its performance, and whether in damages, for an indemnity or contribution or for a restitutionary remedy or in any way whatsoever, our liability will be limited to payment of a sum which will not exceed by way of maximum the amount of the *Purchase Price* of the *Lot* plus *Buyer's Premium* (less any sum you may be entitled to recover from the *Seller*) irrespective in any case of the nature, volume or source of any loss or damage alleged to be suffered or sum claimed as due, and irrespective of whether the liability arises from negligence, other tort, breach of contract, statutory duty, bailee's duty, a restitutionary claim or otherwise.

You may wish to protect yourself against loss by obtaining insurance.

10.4 Nothing set out above will be construed as excluding or restricting (whether directly or indirectly) any person's liability or excluding or restricting any person's rights or remedies in respect of (i) fraud, or (ii) death or personal injury caused by our negligence (or any person under our control or for whom we are legally responsible), or (iii) acts or omissions for which we are liable under the Occupiers Liability Act 1957, or (iv) any other liability to the extent the same may not be excluded or restricted as a matter of law, or (v) under our undertaking in paragraph 9 of these conditions.

11 BOOKS MISSING TEXT OR ILLUSTRATIONS

Where the *Lot* is made up wholly of a *Book* or *Books* and any *Book* does not contain text or illustrations (in either case referred to as a "non-conforming *Lot*"), we undertake a personal responsibility for such a non-conforming *Lot* in accordance with the terms of this paragraph, if:

the original invoice was made out by us to you in respect of the *Lot* and that invoice has been paid; and

you notify us in writing as soon as reasonably practicable after you have become aware that the *Lot* is or may be a non-conforming *Lot*, and in any event within 20 days after the *Sale* (or such longer period as we may agree in writing) that the *Lot* is a non-conforming *Lot*; and

within 20 days of the date of the relevant *Sale* (or such longer period as we may agree in writing) you return the *Lot* to us in the same condition as it was at the time of the *Sale*, accompanied by written evidence that the *Lot* is a non-conforming *Lot* and details of the *Sale* and *Lot* number sufficient to identify the *Lot*.

but not if:

the *Entry* in the *Catalogue* in respect of the *Lot* indicates that the rights given by this paragraph do not apply to it; or

the *Entry* in the *Catalogue* in respect of the *Lot* reflected the then accepted general opinion of scholars and experts or fairly indicated that there was a conflict of such opinion; or

it can be established that the *Lot* is a non-conforming *Lot* only by means of a process not generally accepted for use until after the date on which the *Catalogue* was published or by means of a process which it was unreasonable in all the circumstances for us to have employed; or

the *Lot* comprises atlases, maps, autographs, manuscripts, extra illustrated books, music or periodical publications; or

the *Lot* was listed in the *Catalogue* under "collections" or "collections and various" or the *Lot* was stated in the *Catalogue* to comprise or contain a collection, issue or *Books* which are undescribed or the missing text or illustrations are referred to or the relevant parts of the *Book* contain blanks, half titles or advertisements.

If we are reasonably satisfied that a *Lot* is a non-conforming *Lot*, we will (as principal) purchase the *Lot* from you and you will transfer the title to the *Lot* in question to us, with full title guarantee, free from any liens, charges, encumbrances and adverse claims and we will pay to you an amount equal to the sum of the *Purchase Price* and *Buyer's Premium* paid by you in respect of the *Lot*.

The benefit of paragraph 10 is personal to, and incapable of assignment by, you and if you sell or otherwise dispose of your interest in the *Lot*, all rights and benefits under this paragraph will cease.

12 MISCELLANEOUS

12.1 You may not assign either the benefit or burden of this agreement.

12.2 Our failure or delay in enforcing or exercising any power or right under this agreement will not operate or be deemed to operate as a waiver of our rights under it except to the extent of any express waiver given to you in writing. Any such waiver will not affect our ability subsequently to enforce any right arising under this agreement.

12.3 If either party to this agreement is prevented from performing that party's respective obligations under this agreement by circumstances beyond its reasonable control or if performance of its obligations would by reason of such circumstances give rise to a significantly increased financial cost to it, that party will not, for so long as such circumstances prevail, be required to perform such obligations. This paragraph does not apply to the obligations imposed on you by paragraph 3.

12.4 Any notice or other communication to be given under this agreement must be in writing and may be delivered by hand or sent by first class post or air mail or fax transmission (if to *Bonhams* marked for the attention of the Company Secretary), to the address or fax number of the relevant party given in the *Contract Form* (unless notice of any change of address is given in writing). It is the responsibility of the sender of the notice or communication to ensure that it is received in a legible form within any applicable time period.

12.5 If any term or any part of any term of this agreement is held to be unenforceable or invalid, such unenforceability or invalidity will not affect the enforceability and validity of the remaining terms or the remainder of the relevant term.

12.6 References in this agreement to *Bonhams* will, where appropriate, include reference to *Bonhams'* officers, employees and agents.

12.7 The headings used in this agreement are for convenience only and will not affect its interpretation.

12.8 In this agreement "including" means "including, without limitation".

12.9 References to the singular will include reference to the plural (and vice versa) and reference to any one gender will include reference to the other genders.

12.10 Reference to a numbered paragraph is to a paragraph of this agreement.

12.11 Save as expressly provided in paragraph 12.12 nothing in this agreement confers (or purports to confer) on any person who is not a party to this agreement any benefit conferred by, or the right to enforce any term of, this agreement.

12.12 Where this agreement confers an immunity from, and/or an exclusion or restriction of, the responsibility and/or liability of *Bonhams*, it will also operate in favour and for the benefit of *Bonhams'* holding company and the subsidiaries of such holding company and the successors and assigns of *Bonhams* and of such companies and of any officer, employee and agent of *Bonhams* and such companies, each of whom will be entitled to rely on the relevant immunity and/or exclusion and/or restriction within and for the purposes of Contracts (Rights of Third Parties) Act 1999, which enables the benefit of a contract to be extended to a person who is not a party to the contract, and generally at law.

13 GOVERNING LAW

All transactions to which this agreement applies and all connected matters will be governed by and construed in accordance with the laws of that part of the United Kingdom where the *Sale* takes (or is to take) place and we and you each submit to the exclusive jurisdiction of the courts of that part of the United Kingdom, save that we may bring proceedings against you in any other court of competent jurisdiction to the extent permitted by the laws of the relevant jurisdiction. *Bonhams* has a complaints procedure in place.

DATA PROTECTION – USE OF YOUR INFORMATION

Where we obtain any personal information about you, we shall only use it in accordance with the terms of our Privacy Policy (subject to any additional specific consent(s) you may have given at the time your information was disclosed). A copy of our Privacy Policy can be found on our *Website* www.bonhams.com or requested by post from Customer Services Department, 101 New Bond Street, London W1S 1SR, United Kingdom or by email from info@bonhams.com.

APPENDIX 3

DEFINITIONS AND GLOSSARY

Where these Definitions and Glossary are incorporated, the following words and phrases used have (unless the context otherwise requires) the meanings given to them below. The Glossary is to assist you to understand words and phrases which have a specific legal meaning with which you may not be familiar.

LIST OF DEFINITIONS

"**Additional Premium**" a premium, calculated in accordance with the *Notice to Bidders*, to cover *Bonhams' Expenses* relating to the payment of royalties under the Artists Resale Right Regulations 2006 which is payable by the *Buyer* to *Bonhams* on any *Lot* marked [AR] which sells for a *Hammer Price* which together with the *Buyer's Premium* (but excluding any VAT) equals or exceeds 1000 euros (converted into the currency of the *Sale* using the European Central Bank Reference rate prevailing on the date of the *Sale*).
"**Auctioneer**" the representative of *Bonhams* conducting the *Sale*.

"Bidder" a person who has completed a *Bidding Form*.

"Bidding Form" our Bidding Registration Form, our Absentee Bidding Form or our Telephone Bidding Form.

"Bonhams" Bonhams 1793 Limited or its successors or assigns. *Bonhams* is also referred to in the *Buyer's Agreement*, the Conditions of Business and the *Notice to Bidders* by the words "we", "us" and "our".

"Book" a printed *Book* offered for *Sale* at a specialist *Book Sale*.

"Business" includes any trade, *Business* and profession.

"Buyer" the person to whom a *Lot* is knocked down by the *Auctioneer*. The *Buyer* is also referred to in the *Contract for Sale* and the *Buyer's Agreement* by the words "you" and "your".

"Buyer's Agreement" the contract entered into by *Bonhams* with the *Buyer* (see Appendix 2 in the *Catalogue*).

"Buyer's Premium" the sum calculated on the *Hammer Price* at the rates stated in the *Notice to Bidders*.

"Catalogue" the *Catalogue* relating to the relevant *Sale*, including any representation of the *Catalogue* published on our *Website*.

"Commission" the *Commission* payable by the *Seller* to *Bonhams* calculated at the rates stated in the *Contract Form*.

"Condition Report" a report on the physical condition of a *Lot* provided to a *Bidder* or potential *Bidder* by *Bonhams* on behalf of the *Seller*.

"Conditions of Sale" the *Notice to Bidders*, *Contract for Sale*, *Buyer's Agreement* and Definitions and Glossary.

"Consignment Fee" a fee payable to *Bonhams* by the *Seller* calculated at rates set out in the Conditions of Business.

"Consumer" a natural person who is acting for the relevant purpose outside his trade, *Business* or profession.

"Contract Form" the *Contract Form*, or vehicle *Entry* form, as applicable, signed by or on behalf of the *Seller* listing the *Lots* to be offered for *Sale* by *Bonhams*.

"Contract for Sale" the *Sale* contract entered into by the *Seller* with the *Buyer* (see Appendix 1 in the *Catalogue*).

"Contractual Description" the only *Description* of the *Lot* (being that part of the *Entry* about the *Lot* in the *Catalogue* which is in bold letters, any photograph (except for the colour) and the contents of any *Condition Report*) to which the *Seller* undertakes in the *Contract of Sale* the *Lot* corresponds.

"Description" any statement or representation in any way descriptive of the *Lot*, including any statement or representation relating to its authorship, attribution, condition, provenance, authenticity, style, period, age, suitability, quality, origin, value, estimated selling price (including the *Hammer Price*).

"Entry" a written statement in the *Catalogue* identifying the *Lot* and its *Lot* number which may contain a *Description* and illustration(s) relating to the *Lot*.

"Estimate" a statement of our opinion of the range within which the hammer is likely to fall.

"Expenses" charges and *Expenses* paid or payable by *Bonhams* in respect of the *Lot* including legal *Expenses*, banking charges and *Expenses* incurred as a result of an electronic transfer of money, charges and *Expenses* for loss and damage cover, insurance, *Catalogue* and other reproductions and illustrations, any customs duties, advertising, packing or shipping costs, reproductions rights' fees, taxes, levies, costs of testing, searches or enquiries, preparation of the *Lot* for *Sale*, storage charges, removal charges, removal charges or costs of collection from the *Seller* as the *Seller's* agents or from a defaulting *Buyer*, plus *VAT* if applicable.

"Forgery" an imitation intended by the maker or any other person to deceive as to authorship, attribution, origin, authenticity, style, date, age, period, provenance, culture, source or composition, which at the date of the *Sale* had a value materially less than it would have had if the *Lot* had not been such an imitation, and which is not stated to be such an imitation in any description of the *Lot*. A *Lot* will not be a *Forgery* by reason of any damage to, and/or restoration and/or modification work (including repainting or over painting) having been carried out on the *Lot*, where that damage, restoration or modification work (as the case may be) does not substantially affect the identity of the *Lot* as one conforming to the *Description* of the *Lot*.

"Guarantee" the obligation undertaken personally by *Bonhams* to the *Buyer* in respect of any *Forgery* and, in the case of specialist *Stamp Sales* and/or specialist *Book Sales*, a *Lot* made up of a *Stamp* or *Stamps* or a *Book* or *Books* as set out in the *Buyer's Agreement*.

"Hammer Price" the price in the currency in which the *Sale* is conducted at which a *Lot* is knocked down by the *Auctioneer*.

"Loss and Damage Warranty" means the warranty described in paragraph 8.2 of the Conditions of Business.

"Loss and Damage Warranty Fee" means the fee described in paragraph 8.2.3 of the Conditions of Business.

"Lot" any item consigned to *Bonhams* with a view to its *Sale* at auction or by private treaty (and reference to any *Lot* will include, unless the context otherwise requires, reference to individual items comprised in a group of two or more items offered for *Sale* as one *Lot*).

"Motoring Catalogue Fee" a fee payable by the *Seller* to *Bonhams* in consideration of the additional work undertaken by *Bonhams* in respect of the cataloguing of motor vehicles and in respect of the promotion of *Sales* of motor vehicles.

"New Bond Street" means *Bonhams'* saleroom at 101 New Bond Street, London W1S 1SR.

"Notional Charges" the amount of *Commission* and *VAT* which would have been payable if the *Lot* had been sold at the *Notional Price*.

"Notional Fee" the sum on which the *Consignment Fee* payable to *Bonhams* by the *Seller* is based and which is calculated according to the formula set out in the Conditions of Business.

"Notional Price" the latest in time of the average of the high and low *Estimates* given by us to you or stated in the *Catalogue* or, if no such *Estimates* have been given or stated, the *Reserve* applicable to the *Lot*.

"Notice to Bidders" the notice printed at the back or front of our *Catalogues*.

"Purchase Price" the aggregate of the *Hammer Price* and *VAT* on the *Hammer Price*.

"Reserve" the minimum price at which a *Lot* may be sold (whether at auction or by private treaty).

"Sale" the auction *Sale* at which a *Lot* is to be offered for *Sale* by *Bonhams*.

"Sale Proceeds" the net amount due to the *Seller* from the *Sale* of a *Lot*, being the *Hammer Price* less the *Commission*, any *VAT* chargeable thereon, *Expenses* and any other amount due to us in whatever capacity and howsoever arising.

"Seller" the person who offers the *Lot* for *Sale* named on the *Contract Form*. Where the person so named identifies on the form another person as acting as his agent, or where the person named on the *Contract Form* acts as an agent for a principal (whether such agency is disclosed to *Bonhams* or not), "*Seller*" includes both the agent and the principal who shall be jointly and severally liable as such. The *Seller* is also referred to in the Conditions of Business by the words "you" and "your".

"Specialist Examination" a visual examination of a *Lot* by a specialist on the *Lot*.

"Stamp" means a postage *Stamp* offered for *Sale* at a Specialist *Stamp Sale*.

"Standard Examination" a visual examination of a *Lot* by a non-specialist member of *Bonhams'* staff.

"Storage Contract" means the contract described in paragraph 8.3.3 of the Conditions of Business or paragraph 4.4 of the *Buyer's Agreement* (as appropriate).

"Storage Contractor" means the company identified as such in the *Catalogue*.

"Terrorism" means any act or threatened act of terrorism, whether any person is acting alone or on behalf of or in connection with any organisation(s) and/or government(s), committed for political, religious or ideological or similar purposes including, but not limited to, the intention to influence any government and/or put the public or any section of the public into fear.

"Trust Account" the bank account of *Bonhams* into which all sums received in respect of the *Purchase Price* of any *Lot* will be paid, such account to be a distinct and separate account to *Bonhams'* normal business bank account.

"VAT" value added tax at the prevailing rate at the date of the *Sale* in the United Kingdom.

"Website" *Bonhams Website* at www.bonhams.com

"Withdrawal Notice" the *Seller's* written notice to *Bonhams* revoking *Bonhams'* instructions to sell a *Lot*.

"Without Reserve" where there is no minimum price at which a *Lot* may be sold (whether at auction or by private treaty).

GLOSSARY

The following expressions have specific legal meanings with which you may not be familiar. The following glossary is intended to give you an understanding of those expressions but is not intended to limit their legal meanings:

"artist's resale right": the right of the creator of a work of art to receive a payment on *Sales* of that work subsequent to the original *Sale* of that work by the creator of it as set out in the Artists Resale Right Regulations 2006.

"bailee": a person to whom goods are entrusted.

"indemnity": an obligation to put the person who has the benefit of the indemnity in the same position in which he would have been, had the circumstances giving rise to the indemnity not arisen and the expression "indemnify" is construed accordingly.

"interpleader proceedings": proceedings in the Courts to determine ownership or rights over a *Lot*.

"knocked down": when a *Lot* is sold to a *Bidder*, indicated by the fall of the hammer at the *Sale*.

"lien": a right for the person who has possession of the *Lot* to retain possession of it.

"risk": the possibility that a *Lot* may be lost, damaged, destroyed, stolen, or deteriorate in condition or value.

"title": the legal and equitable right to the ownership of a *Lot*.

"tort": a legal wrong done to someone to whom the wrong doer has a duty of care.

SALE OF GOODS ACT 1979

The following is an extract from the Sale of Goods Act 1979:

"Section 12 Implied terms about title, etc

- (1) In a contract of sale, other than one to which subsection (3) below applies, there is an implied term on the part of the seller that in the case of a sale he has a right to sell the goods, and in the case of an agreement to sell he will have such a right at the time when the property is to pass.
- (2) In a contract of sale, other than one to which subsection (3) below applies, there is also an implied term that-
 - (a) the goods are free, and will remain free until the time when the property is to pass, from any charge or encumbrance not disclosed or known to the buyer before the contract is made, and
 - (b) the buyer will enjoy quiet possession of the goods except in so far as it may be disturbed by the owner or other person entitled to the benefit of any charge or encumbrance so disclosed or known.
- (3) This subsection applies to a contract of sale in the case of which there appears from the contract or is to be inferred from its circumstances an intention that the seller should transfer only such title as he or a third person may have.
- (4) In a contract to which subsection (3) above applies there is an implied term that all charges or encumbrances known to the seller and not known to the buyer have been disclosed to the buyer before the contract is made.
- (5) In a contract to which subsection (3) above applies there is also an implied term that none of the following will disturb the buyer's quiet possession of the goods, namely:
 - (a) the seller;
 - (b) in a case where the parties to the contract intend that the seller should transfer only such title as a third person may have, that person;
 - (c) anyone claiming through or under the seller or that third person otherwise than under a charge or encumbrance disclosed or known to the buyer before the contract is made.
- (5A) As regards England and Wales and Northern Ireland, the term implied by subsection (1) above is a condition and the terms implied by subsections (2), (4) and (5) above are warranties."

Bonhams Specialist Departments

To e-mail any of the below use the first name dot second name @bonhams.com eg. charles.obrien@bonhams.com

19th Century Paintings

UK
Charles O' Brien
+44 20 7468 8360
U.S.A.
Madalina Lazen
+1 212 644 9108

20th Century British Art

Matthew Bradbury
+44 20 7468 8295

Aboriginal Art

Greer Adams
+61 2 8412 2222

African and Oceanic Art

UK
Philip Keith
+44 2920 727 980
U.S.A.
Fred Baklar
+1 323 436 5416

American Paintings

Alan Fausel
+1 212 644 9039

Antiquities

Madeleine Perridge
+44 20 7468 8226

Antique Arms & Armour

UK
David Williams
+44 20 7393 3807
U.S.A.
Paul Carella
+1 415 503 3360

Art Collections, Estates & Valuations

Harvey Cammell
+44 (0) 20 7468 8340

Art Nouveau & Decorative Art & Design

UK
Mark Oliver
+44 20 7393 3856
U.S.A.
Frank Maraschiello
+1 212 644 9059

Australian Art

Litsa Veldekis
+61 2 8412 2222

Australian Colonial Furniture and Australiana

James Hendy
+61 2 8412 2222

Books, Maps & Manuscripts

UK
Matthew Haley
+44 20 7393 3817
U.S.A.
Christina Geiger
+1 212 644 9094

British & European Glass

UK
Simon Cottle
+44 20 7468 8383
U.S.A.
Suzy Pai
+1 415 503 3343

British & European Porcelain & Pottery

UK
John Sandon
+44 20 7468 8244
U.S.A.
Peter Scott
+1 415 503 3326

California & American Paintings

Scot Levitt
+1 323 436 5425

Carpets

UK
Mark Dance
+44 8700 27361
U.S.A.
Hadji Rahimpour
+1 415 503 3392

Chinese & Asian Art

UK
Asaph Hyman
+44 20 7468 5888
U.S.A.
Dessa Goddard
+1 415 503 3333
HONG KONG
Julian King
+852 2918 4321

Clocks

UK
James Stratton
+44 20 7468 8364
U.S.A.
Jonathan Snellenburg
+1 212 461 6530

Coins & Medals

UK
John Millensted
+44 20 7393 3914
U.S.A.
Paul Song
+1 323 436 5455

Contemporary Art

UK
Gareth Williams
+44 20 7468 5879
U.S.A.
Jeremy Goldsmith
+1 917 206 1656

Costume & Textiles

Claire Browne
+44 1564 732969

Entertainment Memorabilia

UK
Stephanie Connell
+44 20 7393 3844
U.S.A.
Catherine Williamson
+1 323 436 5442

Ethnographic Art

Jim Haas
+1 415 503 3294

Football Sporting Memorabilia

Dan Davies
+44 1244 353118

Furniture & Works of Art

UK
Fergus Lyons
+44 20 7468 8221
U.S.A.
Jeffrey Smith
+1 415 503 3413

Greek Art

Olympia Pappa
+44 20 7468 8314

Golf Sporting Memorabilia

Kevin Mcgimpsey
+44 1244 353123

Irish Art

Penny Day
+44 20 7468 8366

Impressionist & Modern Art

UK
Deborah Allan
+44 20 7468 8276
U.S.A.
Tanya Wells
+1 917 206 1685

Islamic & Indian Art

Alice Bailey
+44 20 7468 8268

Japanese Art

UK
Suzannah Yip
+44 20 7468 8368
U.S.A.
Jeff Olson
+1 212 461 6516

Jewellery

UK
Jean Ghika
+44 20 7468 8282
U.S.A.
Susan Abeles
+1 212 461 6525
AUSTRALIA
Patti Sedgwick
+61 2 8412 2222

Marine Art

UK
Veronique Scorer
+44 20 7393 3962
U.S.A.
Gregg Dietrich
+1 917 206 1697

Mechanical Music

Jon Baddeley
+44 20 7393 3872

Modern, Contemporary & Latin American Art

U.S.A.
Alexis Chompaisal
+1 323 436 5469

Modern Design

Gareth Williams
+44 20 7468 5879

Motor Cars

UK
Tim Schofield
+44 20 7468 5804
U.S.A.
Mark Osborne
+1 415 503 3353
EUROPE
Philip Kantor
+32 476 879 471
AUSTRALIA
Damien Duigan
+61 2 8412 2232
Automobilia
Toby Wilson
+44 8700 273 619
U.S.A.
Kurt Forry
+1 415 391 4000

Motorcycles

Ben Walker
+44 8700 273616
Automobilia
Adrian Papiros
+44 8700 273621

Musical Instruments

Philip Scott
+44 20 7393 3855

Natural History

U.S.A.
Claudia Florian
+1 323 436 5437

Old Master Pictures

UK
Andrew Mckenzie
+44 20 7468 8261
U.S.A.
Mark Fisher
+1 323 436 5488

Orientalist Art

Charles O'Brien
+44 20 7468 8360

Photography

U.S.A.
Judith Eurich
+1 415 503 3259

Portrait Miniatures

Camilla Lombardi
+44 20 7393 3985

Prints

UK
Rupert Worrall
+44 20 7468 8262
U.S.A.
Judith Eurich
+1 415 503 3259

Russian Art

UK
Sophie Hamilton
+44 20 7468 8334
U.S.A.
Yelena Harbick
+1 212 644 9136

Scientific Instruments

Jon Baddeley
+44 20 7393 3872
U.S.A.
Jonathan Snellenburg
+1 212 461 6530

Scottish Pictures

Chris Brickley
+44 131 240 2297

Silver & Gold Boxes

UK
Michael Moorcroft
+44 20 7468 8241
U.S.A.
Aileen Ward
+1 800 223 5463

South African Art

Giles Peppiatt
+44 20 7468 8355

Sporting Guns

Patrick Hawes
+44 20 7393 3815

Toys, Dolls & Chess

Leigh Gotch
+44 20 8963 2839

Travel Pictures

Veronique Scorer
+44 20 7393 3962

Urban Art

Gareth Williams
+44 20 7468 5879

Watches & Wristwatches

UK
Paul Maudsley
+44 20 7447 7412
U.S.A.
Jonathan Snellenburg
+1 212 461 6530
HONG KONG
Carson Chan
+852 2918 4321

Whisky

UK
Martin Green
+44 1292 520000
U.S.A.
Joseph Hyman
+1 917 206 1661
HONG KONG
Daniel Lam
+852 3607 0004

Wine

UK
Richard Harvey
+44 (0) 20 7468 5811
U.S.A.
Doug Davidson
+1 415 503 3363
HONG KONG
Daniel Lam
+852 3607 0004

UNITED KINGDOM

London
101 New Bond Street •
London W1S 1SR
+44 20 7447 7447
+44 20 7447 7400 fax

Montpelier Street •
London SW7 1HH
+44 20 7393 3900
+44 20 7393 3905 fax

South East England

Brighton & Hove
19 Palmeira Square
Hove, East Sussex
BN3 2JN
+44 1273 220 000
+44 1273 220 335 fax

Guildford
Millmead,
Guildford,
Surrey GU2 4BE
+44 1483 504 030
+44 1483 450 205 fax

Tunbridge Wells
Ground Floor
Royal Victoria House
51-55 The Pantiles
Tunbridge Wells, Kent
TN2 5TE
+44 1892 546 818
+44 1892 518 077 fax

Isle of Wight
+44 1983 282 228

Representative:
West Sussex
Jeff Burfield
+44 1243 787 548

South West England

Bath
Queen Square House
Charlotte Street
Bath BA1 2LL
+44 1225 788 988
+44 1225 446 675 fax

Cornwall – Truro
36 Lemon Street
Truro
Cornwall
TR1 2NR
+44 1872 250 170
+44 1872 250 179 fax

Exeter
The Lodge
Southernhay West Exeter,
Devon
EX1 1JG
+44 1392 425 264
+44 1392 494 561 fax

Winchester
The Red House
Hyde Street
Winchester
Hants SO23 7DX
+44 1962 862 515
+44 1962 865 166 fax

Tetbury
22a Long Street
Tetbury
Gloucestershire
GL8 8AQ
+44 1666 502 200
+44 1666 505 107 fax

Representatives:
Dorset
Bill Allan
+44 1935 815 271

East Anglia

Bury St. Edmunds
21 Churchgate Street
Bury St Edmunds
Suffolk IP33 1RG
+44 1284 716 190
+44 1284 755 844 fax

Norfolk

The Market Place
Reepham
Norfolk NR10 4JJ
+44 1603 871 443
+44 1603 872 973 fax

Midlands

Knowle
The Old House
Station Road
Knowle, Solihull
West Midlands
B93 0HT
+44 1564 776 151
+44 1564 778 069 fax

Oxford •
Banbury Road
Shipton on Cherwell
Kidlington OX5 1JH
+44 1865 853 640
+44 1865 372 722 fax

Yorkshire & North East England

Leeds
30 Park Square West
Leeds LS1 2PF
+44 113 234 5755
+44 113 244 3910 fax

North West England

Chester •
New House
150 Christleton Road
Chester, Cheshire
CH3 5TD
+44 1244 313 936
+44 1244 340 028 fax

Carlisle
48 Cecil Street
Carlisle, Cumbria
CA1 1NT
+44 1228 542 422
+44 1228 590 106 fax

Manchester
The Stables
213 Ashley Road
Hale WA15 9TB
+44 161 927 3822
+44 161 927 3824 fax

Southport
33 Botanic Road
Churchtown
Southport
Merseyside PR9 7NE
+44 1704 507 875
+44 1704 507 877 fax

Channel Islands

Jersey
39 Don Street
St. Helier
JE2 4TR
+44 1534 722 441
+44 1534 759 354 fax

Representative:
Guernsey
+44 1481 722 448

Scotland

Edinburgh •
22 Queen Street
Edinburgh
EH2 1JX
+44 131 225 2266
+44 131 220 2547 fax

Glasgow
176 St. Vincent Street,
Glasgow
G2 5SG
+44 141 223 8866
+44 141 223 8868 fax

Representatives:
Wine & Spirits
Tom Gilbey
+44 1382 330 256

Wales

Cardiff
7-8 Park Place,
Cardiff CF10 3DP
+44 2920 727 980
+44 2920 727 989 fax

EUROPE

Austria - Vienna
Garnisonsgasse 4
1090 Vienna
+43 (0)1 403 00 01
vienna@bonhams.com

Belgium - Brussels
Boulevard
Saint-Michire 101
1040 Brussels
+32 (0)2 736 5076
+32 (0)2 732 5501 fax
belgium@bonhams.com

France - Paris
4 rue de la Paix
75002 Paris
+33 (0)1 42 61 1010
+33 (0)1 42 61 1015 fax
paris@bonhams.com

Germany - Cologne
Albertusstrasse 26
50667 Cologne
+49 (0)221 2779 9650
+49 (0)221 2779 9652 fax
cologne@bonhams.com

Germany - Munich
Maximilianstrasse 52
80538 Munich
+49 (0) 89 2420 5812
+49 (0) 89 2420 7523 fax
munich@bonhams.com

Ireland - Dublin
31 Molesworth Street
Dublin 2
+353 (0)1 602 0990
+353 (0)1 4004 140 fax
ireland@bonhams.com

Italy - Milan
Via Boccaccio 22
20123 Milano
+39 (0)2 4953 9020
+39 (0)2 4953 9021 fax
milan@bonhams.com

Italy - Rome
Via Sicilia 50
00187 Rome
+39 (0)6 48 5900
+39 (0)6 482 0479 fax
rome@bonhams.com

Netherlands - Amsterdam
De Lairessestraat 154
1075 HL Amsterdam
+31 20 67 09 701
+31 20 67 09 702 fax
amsterdam@bonhams.com

Spain - Madrid
Nuñez de Balboa no.4 - 1A
Madrid
28001
+34 91 578 17 27
madrid@bonhams.com

Switzerland - Geneva
Rue Etienne-Dumont 10
1204 Geneva
Switzerland
+41 76 379 9230
geneva@bonhams.com

Representatives:
Greece
Art Expertise
+30 210 3636 404

Marbella
James Roberts
+34 952 90 62 50
marbella@bonhams.com

Portugal
Filipa Rebelo de Andrade
+351 91 921 4778
portugal@bonhams.com

Russia
Marina Jacobson
+7 921 555 2302
russia@bonhams.com

NORTH AMERICA

USA

San Francisco •
220 San Bruno Avenue
San Francisco
CA 94103
+1 (415) 861 7500
+1 (415) 861 8951 fax

Los Angeles •
7601 W. Sunset Boulevard
Los Angeles
CA 90046
+1 (323) 850 7500
+1 (323) 850 6090 fax

New York •
580 Madison Avenue
New York, NY
10022
+1 (212) 644 9001
+1 (212) 644 9007 fax

Representatives:
Arizona
Terri Adrian-Hardy
+1 (480) 994 5362

California
Central Valley
David Daniel
+1 (916) 364 1645

District of Columbia/ Mid-Atlantic
Martin Gammon
+1 (202) 333 1696

Southern California
Christine Eisenberg
+1 (949) 646 6560

Florida
+1 (305) 228 6600

Georgia
Mary Moore Bethea
+1 (404) 842 1500

Illinois
Ricki Blumberg Harris
+1 (312) 475 3922
+1 (773) 267 3300

Massachusetts Boston/New England
Amy Corcoran
+1 (617) 742 0909

Nevada
David Daniel
+1 (775) 831 0330

New Mexico
Leslie Trilling
+1 (505) 820 0701

Oregon
Sheryl Acheson
+1(503) 312 6023

Texas
Amy Lawch
+1 (713) 621 5988

Washington
Heather O'Mahony
+1 (206) 218 5011

CANADA

Toronto, Ontario •
Jack Kerr-Wilson
20 Hazelton Avenue
Toronto, ONT
M5R 2E2
+1 (416) 462 9004
info.ca@bonhams.com

Montreal, Quebec
David Kelsey
+1 (514) 341 9238
info.ca@bonhams.com

SOUTH AMERICA

Argentina
Daniel Claramunt
+54 11 479 37600

Brazil
Thomaz Oscar Saavedra
+55 11 3031 4444
+55 11 3031 4444 fax

ASIA

Hong Kong
Carson Chan
Suite 1122
Two Pacific Place
88 Queensway
Admiralty
Hong Kong
+852 2918 4321
+852 2918 4320 fax
hongkong@bonhams.com

Beijing
Hongyu Yu
Room A515
F/5 CDB International
Mansion
No. 16 Yongnan Dongli
Chaoyang District
Beijing 100022
+86(0) 10 6563 7799
+86(0) 10 6563 7788 fax
beijing@bonhams.com

Japan
Level 14 Hibiya Central Building
1-2-9 Nishi-Shimbashi
Minato-ku
Tokyo 105-0003
+81 (0) 3 5532 8636
+81 (0) 3 5532 8637 fax
tokyo@bonhams.com

Taiwan
37th Floor, Taipei 101 Tower
Nor 7 Xinyi Road, Section 5
Taipei, 100
+886 2 8758 2898
+886 2 8757 2897 fax
summer.fang@bonhams.com

AUSTRALIA

Sydney
76 Paddington Street
Paddington NSW 2021
Australia
+61 (0) 2 8412 2222
+61 (0) 2 9475 4110 fax
info.aus@bonhams.com

Melbourne
Ormond Hall
557 St Kilda Rd
Melbourne VIC 3004
+61 (0) 3 8640 4088

Representative:
Adelaide
James Bruce
+61 (0) 8 8232 2860

AFRICA

South Africa - Johannesburg
Penny Culverwell
+27 (0)71 342 2670
penny.culverwell@bonhams.com

Registration and Bidding Form

(Attendee / Absentee / Online / Telephone Bidding)

Please circle your bidding method above.

Bonhams

1793

--	--	--	--

Paddle number (for office use only)

This sale will be conducted in accordance with Bonhams' Conditions of Sale and bidding and buying at the Sale will be regulated by these Conditions. You should read the Conditions in conjunction with the Sale Information relating to this Sale which sets out the charges payable by you on the purchases you make and other terms relating to bidding and buying at the Sale. You should ask any questions you have about the Conditions before signing this form. These Conditions also contain certain undertakings by bidders and buyers and limit Bonhams' liability to bidders and buyers.

Data protection – use of your information

Where we obtain any personal information about you, we shall only use it in accordance with the terms of our Privacy Policy (subject to any additional specific consent(s) you may have given at the time your information was disclosed). A copy of our Privacy Policy can be found on our website (www.bonhams.com) or requested by post from Customer Services Department, 101 New Bond Street, London W1S 1SR United Kingdom or by e-mail from info@bonhams.com.

Credit and Debit Card Payments

There is no surcharge for payments made by debit cards issued by a UK bank. All other debit cards and all credit cards are subject to a 2% surcharge on the total invoice price.

Notice to Bidders.

Clients are requested to provide photographic proof of ID - passport, driving licence, ID card, together with proof of address - utility bill, bank or credit card statement etc. Corporate clients should also provide a copy of their articles of association / company registration documents, together with a letter authorising the individual to bid on the company's behalf. Failure to provide this may result in your bids not being processed. For higher value lots you may also be asked to provide a bank reference.

If successful

I will collect the purchases myself
 Please contact me with a shipping quote (if applicable)

Sale title: Jewellery		Sale date: 7 August 2013													
Sale no. 20636		Sale venue: Knightsbridge													
<p>If you are not attending the sale in person, please provide details of the Lots on which you wish to bid at least 24 hours prior to the sale. Bids will be rounded down to the nearest increment. Please refer to the Notice to Bidders in the catalogue for further information relating to Bonhams executing telephone, online or absentee bids on your behalf. Bonhams will endeavour to execute these bids on your behalf but will not be liable for any errors or failing to execute bids.</p> <p>General Bid Increments:</p> <table border="0"> <tr> <td>£10 - 200by 10s</td> <td>£10,000 - 20,000by 1,000s</td> </tr> <tr> <td>£200 - 500by 20 / 50 / 80s</td> <td>£20,000 - 50,000by 2,000 / 5,000 / 8,000s</td> </tr> <tr> <td>£500 - 1,000by 50s</td> <td>£50,000 - 100,000by 5,000s</td> </tr> <tr> <td>£1,000 - 2,000by 100s</td> <td>£100,000 - 200,000by 10,000s</td> </tr> <tr> <td>£2,000 - 5,000by 200 / 500 / 800s</td> <td>above £200,000at the auctioneer's discretion</td> </tr> <tr> <td>£5,000 - 10,000by 500s</td> <td></td> </tr> </table> <p>The auctioneer has discretion to split any bid at any time.</p>				£10 - 200by 10s	£10,000 - 20,000by 1,000s	£200 - 500by 20 / 50 / 80s	£20,000 - 50,000by 2,000 / 5,000 / 8,000s	£500 - 1,000by 50s	£50,000 - 100,000by 5,000s	£1,000 - 2,000by 100s	£100,000 - 200,000by 10,000s	£2,000 - 5,000by 200 / 500 / 800s	above £200,000at the auctioneer's discretion	£5,000 - 10,000by 500s	
£10 - 200by 10s	£10,000 - 20,000by 1,000s														
£200 - 500by 20 / 50 / 80s	£20,000 - 50,000by 2,000 / 5,000 / 8,000s														
£500 - 1,000by 50s	£50,000 - 100,000by 5,000s														
£1,000 - 2,000by 100s	£100,000 - 200,000by 10,000s														
£2,000 - 5,000by 200 / 500 / 800s	above £200,000at the auctioneer's discretion														
£5,000 - 10,000by 500s															
Customer Number		Title													
First Name		Last Name													
Company name (to be invoiced if applicable)															
Address															
City		County / State													
Post / Zip code		Country													
Telephone mobile		Telephone daytime													
Telephone evening		Fax													
Preferred number(s) in order for Telephone Bidding (inc. country code)															
E-mail (in capitals) <input type="text"/>															
I am registering to bid as a private client <input type="checkbox"/>		I am registering to bid as a trade client <input type="checkbox"/>													
If registered for VAT in the EU please enter your registration here: <input type="text"/>		Please tick if you have registered with us before <input type="checkbox"/>													

Please note that all telephone calls are recorded.

Telephone or Absentee (T / A)	Lot no.	Brief description	MAX bid in GBP (excluding premium & VAT)	Covering bid*

FOR WINE SALES ONLY

Please leave lots "available under bond" in bond I will collect from Park Royal or bonded warehouse Please include delivery charges (minimum charge of £20 + VAT)

BY SIGNING THIS FORM YOU AGREE THAT YOU HAVE READ AND UNDERSTAND OUR CONDITIONS OF SALE AND WISH TO BE BOUND BY THEM. THIS AFFECTS YOUR LEGAL RIGHTS.

Your signature: Date:

* Covering Bid: A maximum bid (exclusive of Buyers Premium and VAT) to be executed by Bonhams only if we are unable to contact you by telephone, or should the connection be lost during bidding.

NB. Payment will only be accepted from an account in the same name as shown on the invoice and Auction Registration form.

Please email or fax the completed Auction Registration form and requested information to:

Bonhams, Customer Services, 101 New Bond Street, London, W1S 1SR. Tel: +44 (0) 20 7447 7447 Fax: +44 (0) 20 7447 7401, bids@bonhams.com

Bonhams 1793 Limited. Montpelier Street, London SW7 1HH. Incorporated in England. Company Number 4326560.

169





Bonhams

Montpelier Street
Knightsbridge
London SW7 1HH
+44 (0) 20 7393 3900
+44 (0) 20 7393 3905 fax