

Bonhams

1793

Jewellery

Tuesday 9 April 2013 at 11am
Oxford





Jewellery

Tuesday 9 April 2013 at 11am
Oxford

Bonhams

Banbury Road
Shipton-on-Cherwell
Kidlington
Oxford
OX5 1JH
www.bonhams.com

Viewing

Saturday 6 April 9am to 12noon
Monday 8 April 9am to 4.30pm
Tuesday 9 April 9am to 11am

Bids

+44 (0) 20 7447 7448
+44 (0) 20 7447 7401 fax
To bid via the internet
please visit www.bonhams.com

Please provide details of the lots
on which you wish to place bids
at least 24 hours prior to the sale.

New bidders must also
provide proof of identity
when submitting bids. Failure
to do this may result in your
bids not being processed.

Live online bidding is available for this sale

Please email bids@bonhams.com
with "Live bidding" in the subject
line 48 hours before the auction
to register for this service

Bonhams 1793 Limited
Registered No. 4326560
Registered Office: Montpelier Galleries
Montpelier Street,
London SW7 1HH
+44 (0) 20 7393 3900
+44 (0) 20 7393 3905 fax

Jewellery Enquiries

Frances Noble FGA DGA
frances.noble@bonhams.com
+44 (0) 1865 853 653

Tessa Parry FGA DGA
tessa.parry@bonhams.com
+44 (0) 1865 853 655

Louise Dennis FGA DGA
louise.dennis@bonhams.com
+44 (0) 1865 853 654

Administrator
Isabella Mendes Cert GA
isabella.mendes@bonhams.com
+44 (0) 1865 853 652

Photography Enquiries
Hannah Ibison Cert GA
hannah.ibison@bonhams.com
+44 (0) 1865 853 663

Sale Number: 20684

Catalogue: £8 (£10 by post)

Bonhams 1793 Ltd Directors
Robert Brooks Chairman, Colin Sheaf Deputy Chairman,
Malcolm Barber Group Managing Director,
Matthew Girling CEO UK and Europe,
Geoffrey Davies, Jonathan Horwich, James Knight,
Patrick Meade, Caroline Oliphant, Hugh Watchorn.

Customer Services

Monday to Friday 8.30am to 6pm
+44 (0) 20 7447 7447

Please see back of catalogue
for important notice to bidders

Illustrations

Front cover: lot 164 (part)
Back cover: lot 156
Inside front cover: lot 62 (part)
Inside back cover: lot 191 & 192

Please note that as a result
of recent legislation ruby and
jadeite gemstones of Burmese
(Myanmar) origin may not be
imported into the US. Rubies
and jadeite of non-Burmese
origin require certification
before import into the US.
Items affected are marked
with a symbol ≈

Important Notice Regarding Importation Into The United States of Rolex Watches.

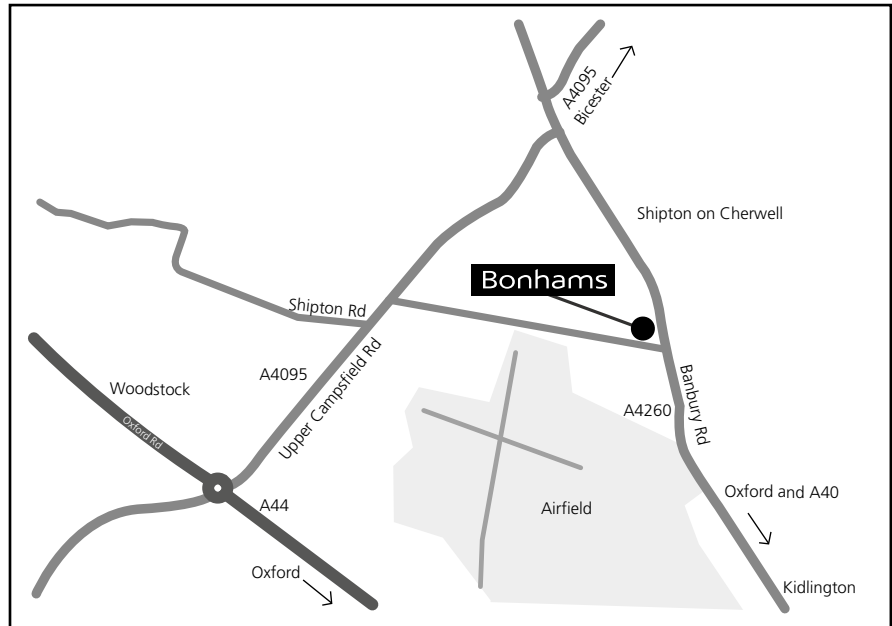
Bonhams cannot arrange for
the delivery of Rolex watches
into The United States. The
buyer or designated agent
may collect the property in
the country of sale.



Bonhams UK Ltd Directors
Colin Sheaf Chairman, Jonathan Baddeley, Antony Bennett,
Matthew Bradbury, Harvey Cammell, Simon Cottle,
Andrew Currie, David Dallas, Paul Davidson, Jean Ghika,
Charles Graham-Campbell, Miranda Grant, Robin Hereford,
Asaph Hyman, Charles Lanning, Camilla Lombardi,
Fergus Lyons, Paul Maudsley, Gordon McFarlan,
Andrew McKenzie, Simon Mitchell, Jeff Muse, Mike Neill,
Charlie O'Brien, Giles Peppiatt, Peter Rees, Julian Roup,

Iain Rushbrook, John Sandon, Tim Schofield,
Veronique Scorer, James Stratton, Roger Tappin,
Shahin Virani, David Williams, Michael Wynell-Mayow.

Sale Information



By Rail: Oxford train station

Saleroom

Banbury Road,
Shipton on Cherwell,
Kidlington
Oxford
OX5 1JH

+44 (0) 1865 853 640
+44 (0) 1865 372 722 fax

Condition Reports

We highly recommend that potential buyers make efforts to inspect the lots in Oxford in person, during our public viewing. We expect that there may be a large number of condition enquiries, and the effect will be that clients submitting long and elaborate requests are likely to be dealt with after those with short and specific requests.

By Road

From London:
Exit the M40 at junction 9. Take the A34 to Oxford and then the A44 to Woodstock. At Woodstock roundabout take the 3rd exit towards Bicester (A4095). Take the first right and Bonhams is at the far end on the left.

From the A40 West:
Take the A40 towards Oxford. Take the first left at the Eynsham roundabout. Drive through Church Hanborough and then turn right on to the A4095. Drive through Bladon and straight over the Woodstock roundabout. Take the first right and Bonhams is at the far end on the left.

Shipping Information

Unless you wish to use your own shipping company, please contact any of the below:

Isabella Mendes via email at: isabella.mendes@bonhams.com

Or

Mail Boxes Etc.
266 Banbury Road,
Oxford OX2 7DL
+44 (0)1865 514 655
info@mbesummertown.co.uk

Or

Pack & Send
3 Botley Road, Oxford OX2 0AA
+44 (0)1865 260 610
oxford@packsend.co.uk

You can also contact shipping@bonhams.com with any difficulties or questions arising from the above or for any CITES requirements.

Jewellery
Tuesday 9 April 2013 at 11am

1

A diamond single stone ring

The old brilliant-cut diamond within a reeded gypsy style mount, stamped '18c', *total diamond weight approximately 0.90ct, ring size O.*
£500 - 700

2

A collection of jewellery

Comprising a curb-link chain necklace, partially stamped mark 'Tiffany & Co' and '14k', a single stone emerald-cut diamond solitaire ring, in four claw setting, 18ct gold mounted, a diamond three row half hoop ring, channel set with brilliants, shank stamped '585', and a 9ct gold engine-turned propelling cigar piercer, *chain length 72cm, weight 18.05gm, first ring size L½. (4)*
£500 - 700

3

An 18ct gold Albert chain and hardstone fob pendant

The graduated curb-link chain with swivel clasp, suspending an 18ct gold cornelian and bloodstone swivel fob pendant, *chain length 43cm, gross weight approximately 70.4gm.*
£1,000 - 1,500

3A

Tiffany & Co: An 18ct gold diamond set heart pendant

The yellow gold heart pendant highlighted with pavé set brilliant-cut diamonds, on a fine belcher-link chain, signed and stamped '750', in Tiffany & Co pouch and box, *pendant length 2.6cm.*
£500 - 700

4

A yellow precious metal belcher-link necklace

Of squared belcher-link design, stamped '375', *length 61.5cm, weight approximately 47.5gm.*
£500 - 700

5

A 9ct gold belcher-link necklace

Of squared belcher-link design, *length 76cm, weight approximately 59.5gm.*
£550 - 700

6

An 18ct gold fancy-link chain and Masonic pendant

The chain composed of alternate ropetwist and reeded baton links, to swivel clasps and an 18ct gold T-bar, suspending a Masonic orb pendant stamped '9ct', *chain length (excluding central drop) 43cm, gross weight approximately 83.5gm.*
£1,200 - 1,500

7

Three pairs of cufflinks

Comprising a pair of 18ct gold oval cufflinks, by the Goldsmiths & Silversmiths Co Ltd, a pair of 9ct gold cufflinks, with engine-turned oval panels, and a pair of 9ct gold rectangular panel cufflinks, with canted corners and part engine-turned decoration, *first pair weight 10.30gm, second and third pair weight 16.95gm. (3)*
£300 - 400



1

2 (part)

3A

2 (part)

3

4

5

6

7 (part)

8≈

Three brooches

The first, an 18ct gold and diamond brooch by Cropp & Farr, modelled as a field mouse climbing an ear of corn, with diamond detail and ruby eyes, stamped maker's mark C & F, full hallmark for London 1989, the second brooch modelled as a snipe in flight, partial pavé set with brilliant-cut diamonds and cabochon ruby eyes, 18ct white gold, maker's mark E W & Co, full hallmark for London 1989, the third brooch of openwork scrolling design, set with garnets and cultured pearls, later mounted, *first brooch length 3.8cm, second brooch 3.4cm.* (3)
£500 - 700

9

A diamond set insect brooch

Set throughout with rose-cut diamonds, to a tapered bar brooch.
£700 - 800

10≈

An 18ct gold dachshund brooch

The dog seated on its hind legs, with textured decoration and circular-cut ruby eyes, import marks for London, *length 3.3cm.*
£250 - 300

11≈

A ruby and diamond cluster ring and a diamond single stone ring

The first centred with a rectangular step-cut ruby, within a millegrained border and shoulders of single-cut diamonds, stamped '18ct plat', the second gypsy set with an old-cut diamond, inscribed to interior, *ring sizes M½ and L respectively.* (2)

12

A diamond single stone pendant

The round brilliant-cut diamond in an 18ct gold six claw setting, below a fluted pendant bale, on a fine box-link chain stamped '18k', *total diamond weight approximately 0.40ct, chain length 40cm.*
£500 - 600

13≈

A ruby and diamond pendant necklace

The graduated baton-link pendant drops highlighted with circular-cut rubies, each terminating in a step-cut ruby, old and single-cut diamond cluster panel, to a fancy baton and belcher-link chain, *longest pendant length 5.4cm, chain length 46cm.*
£500 - 600

14

A diamond four stone band ring

The heavy yellow precious metal band ring stamped '18', rubover set with four old brilliant-cut diamonds, *total diamond weight approximately 1.0ct, ring size N.*
£500 - 600

15

A diamond cluster ring

The central brilliant-cut diamond collet set within a surround of six similarly set brilliants, to tapered baguette-cut diamond shoulders, shank stamped '18ct', *total diamond weight approximately 1.44ct, ring size L.*
£700 - 900

16

A three stone diamond ring

The three old brilliant-cut diamonds claw set, *total diamond weight approximately 1.1ct, ring size L½.*
£700 - 900

17

A synthetic ruby and diamond set cross pendant

Of Latin design, the oval mixed-cut synthetic stones in collet mounts, and bordered by rose-cut diamonds, (one stone missing) on suspensory loop, *length 7.5cm.*
£400 - 600

18

A spinel and diamond three stone ring

The oval mixed-cut red spinel claw set between old-cut diamonds, white precious metal mounted, (indistinct hallmarks), *total diamond weight 0.80ct, ring size O.*
£500 - 600

19≈

A ruby and diamond cluster ring

The oval mixed-cut ruby claw set within a surround of old brilliant-cut diamonds, *total diamond weight approximately 1.2ct, ring size N.*
£1,000 - 1,500

20

A pink sapphire and diamond cluster ring

The two pink sapphires claw set within a border of brilliants, between shaped shoulders, 18ct gold mounted, hallmarked for London 1978, *ring size O.*
£500 - 600

21≈

Two gem set Victorian crescent bar brooches

The first set with graduated mixed-cut rubies and small old-brilliant-cut diamonds, with central seed pearl, the second set with graduated old brilliant-cut diamonds, *first brooch length 4.9cm.* (2)
£500 - 600

22≈

A ruby and diamond crescent brooch, circa 1890

The row of cushion-shaped, rose and old brilliant-cut diamonds to an oval and circular-cut ruby border, mounted in silver and gold, (one diamond deficient), *total diamond weight approximately 0.55ct, length 2.9cm.*
£600 - 800

23

A pair of gem-set and black diamond earpendants

Each with star-shaped surmount, inset with a green stone cabochon, suspending a vertical line of black diamond crystals below, terminating in a briolette-cut pink tourmaline drop, *length 5.5cm.*
£400 - 600

24≈

A gem set gate-link bracelet and a gem set bar brooch

The narrow gate-link bracelet collet set with alternate round-cut rubies and half pearls, clasp stamped '15', the millegrained bar brooch set with calibré-cut rubies, sapphires and old brilliant-cut diamonds, *bracelet length 18.5cm.* (2)
£500 - 700

25≈

Two vari gem-set brooches and two full hoop eternity rings

Comprising a ruby, diamond and seed pearl double heart brooch, the heart motif centred with an oval-cut ruby and old-cut diamond, with ropetwist knot surmount and bordered by seed pearls, together with a garnet set dragonfly brooch, a diamond full hoop eternity ring, set with single and old-cut diamonds, and a ruby example, set with calibré-cut rubies, *first brooch diameter 2.5cm.* (4)
£500 - 600



8 (part)



9



10



11



12



13



14



18



15



16



17



19



20



21 (part)



23



21 (part)



24



22



25 (part)

26≈

An 18ct white gold diamond, white stone and ruby necklace and earrings

With central pendant section of open tear-shaped design, composed of claw set round mixed-cut rubies, and centrally suspending a pear-cut white stone drop (replacement from original diamond drop), to polished S-link back chain, together with a pair of earclips ensuite, of half hoop design, with a central row of brilliants, bordered to each side by rubies, on post and clip fittings, *necklace length 40cm, earclips length 2cm. (2)*
£1,200 - 1,500

27≈

An 18ct gold ruby and diamond flower brooch

The textured flowerhead with a ruby and diamond bombé centre, the textured stalk with single diamond accent, maker's mark 'deM' for De Maurier Jewels Ltd, with full London hallmark for 1963, *length 6.6cm.*
£700 - 900

28

A diamond dress ring

Of Odeonesque design, obliquely claw set with an old-cut diamond and a channel of smaller similarly cut stones, two colour precious metal mounted, *ring size P.*
£400 - 600

29

A sapphire and diamond double cluster ring

The oval-cut sapphire and brilliant-cut diamond clusters in vertical alignment, 18ct yellow gold mounted, *ring size K.*
£300 - 400

30

A yellow sapphire and diamond cluster ring

The circular mixed-cut yellow sapphire within a border of brilliant-cut diamonds, between scroll engraved shoulders, stamped '750', (sapphire untested for treatments or enhancements), *ring size M.*
£300 - 400

31

Boodles: An 18ct gold diamond set pendant necklace

The central two colour pendant of tear-drop shape, with wrythen diamond set detail, on two row back chain, box clasp stamped 'Boodles', *necklace length 43cm.*
£500 - 600

32≈

A pair of gem set fruiting vine brooches

Each modelled as a bunch of cabochon ruby grapes with small single-cut diamond highlights between, surmounted by a pair of textured leaves, with white precious metal vein detail set with further single-cut diamonds, *length 4.8cm.*
£600 - 800

33

A diamond set brooch and earclips suite

Each of two colour textured foliate design, highlighted with channels of graduated single-cut diamonds, stamped '18k', *brooch length 4.9cm, earclips length 3cm. (2)*
£500 - 600

34

A diamond line bracelet

Designed as a line of white precious metal baton-shaped links, accented with brilliant-cut diamonds, with yellow precious metal beads between, stamped '18kt 750', *length 19cm.*
£600 - 800

35

A sapphire and diamond cluster bracelet

The sixteen cluster panels centred with an oval-cut sapphire within a border of brilliant-cut diamonds, the clasp stamped '18k', *length 17.3cm.*
£800 - 1,000

36

A sapphire set fancy link bracelet, circa 1970s

Designed as overlapping textured leaves with sapphire highlights, unmarked, *length 17cm.*
£600 - 800

37≈

A ruby and diamond floral spray brooch, circa 1950

The three colour precious metal flower with diamond accents, (one stone missing to stem), the flowerhead with ruby set stamen and a central brilliant-cut diamond, *length 6.5cm.*
£500 - 600



26



27



28



32



29



30



33



31



35

34



37



36



47

38
A late Victorian gold amethyst and seed pearl brooch/pendant on chain and an amethyst brooch

The pendant centred with a five petal amethyst flowerhead, within seed pearl detail, reverse stamped '9ct', on a Victorian 9ct gold chain, together with an amethyst and cultured pearl oval cluster brooch/pendant, 9ct gold mounted, hallmarked for London 1978, *pendant length (including bale) 4cm, brooch length 2.8cm.* (3)
£500 - 700

39
Murrle Bennett & Co: A peridot and seed pearl necklace
 Designed as a central flowerhead cluster and line of circular-cut peridots, spaced by half pearls in floral panels, suspending three graduated peridot drops below, the reverse stamped '9ct' and 'MB & Co', on a fine trace-link chain, *length 42cm.*
£500 - 600

40
A suite of paste jewellery
 Comprising a graduated rivi re necklace, the oval-cut purple pastes within beaded pinched claw settings, together with a pair of earclips, (later converted), and a brooch, (later pin fitting), both of conforming design, *necklace length 34cm, brooch length 4.2cm.* (3)

41
An amethyst and seed pearl fringe necklace
 The graduated fringe of oval mixed-cut amethysts to a seed pearl chain, *length 32cm.*
£200 - 300

42
Two 19th century gem set brooches
 The first a novelty brooch modelled as three graduated flying ducks, set throughout with graduated old brilliant and rose-cut diamonds, to polychrome enamel heads, mounted on knife-edge bar, the second modelled as three lily flowerheads, the petals set with rose-cut diamonds, around central old brilliant-cut diamonds, *first brooch length 5.3cm.* (2)
£700 - 900

43
An amethyst, ruby and half pearl brooch
 The large oval mixed-cut amethyst within a beaded frame of half pearls and cushion-shaped rubies, (pearls untested), *length 4.2cm.*
£800 - 900

44
A gold and amethyst necklace and a pair of amethyst earpendants
 The necklace composed of three sections contemporary to the early 19th century, comprising a graduated rivi re of oval-cut amethysts in beaded pinched claw settings, extended on each side by a series of alternate foliate and shell-shaped links, with beaded belcher-link back chain, to an oval-cut amethyst set clasp, together with a pair of amethyst earpendants, each pear-shaped amethyst framed by scroll engraved panels and filigree decoration, to later fittings and suspension chain stamped '9ct', *necklace length 45cm, earpendants length 4.5cm.* (2)
£1,000 - 1,500

45
A diamond set bar brooch and two scarf pins
 The diamond bar brooch with graduated shaped diamond panels, later adapted, together with an early 20th century rose-cut diamond and pearl scarf pin, and a late 19th/early 20th century scarf pin with a reverse painted intaglio depicting a stag, (pearls untested), *bar brooch length 7.2cm.* (3)
£500 - 700

46
An amethyst and aquamarine fringe necklace
 The graduated, tiered baton-link fringe of oval-cut amethyst and aquamarine drops, below a line of alternating similarly-cut stones, to a fine belcher-link back chain, *length 38.5cm.*
£500 - 700

47
An Edwardian diamond oval locket pendant
 The glazed locket bordered by single-cut diamonds, millegrain edged, suspended from similarly set diamond bale, on later added bar brooch with small section of pearl set chain, in original fitted case by Goldsmiths & Silversmiths Co Ltd, *pendant length including bale 3.8cm.*
£500 - 700



38



39



41



40



42



43



45



44 (part)



44 (part)



46



48

An 18ct gold and white metal Albert chain

Of alternate fetter links, with swivel terminals and T-bar, *gross weight 53gm.*

£1,000 - 1,500

49

An 18ct gold curb-link chain

With swivel clasp and T-bar suspension, *length 42cm, gross weight approximately 48.5gm.*

£800 - 1,200

50

A 15ct gold curb-link Albert chain

With T-bar suspension and single swivel clasp, *length 37cm, weight 33.4gm.*

£500 - 600

51

A ropetwist chain and a pair of cufflinks

The uniform ropetwist-link chain stamped '10k', the 9ct gold cufflinks of cushion-shaped panel design, applied with sailing ship motifs, (one detached), to baton-link fittings, *chain length 72cm, cufflinks panel length 2.15cm.* (2)

£500 - 700

52

An 18ct gold fancy-link necklace, circa 1970

Composed of baton-shaped links of part textured abstract design, with indistinct maker's mark, *gross weight approximately 21.5gm.*

£400 - 600

53

A pair of vari gem-set earpendants

Each cross-shaped drop set with square-cut vari-coloured gemstones, to include peridot, citrine and amethyst, with cultured pearls between, bordered by ropetwist decoration, *length 2.6cm.*

£500 - 600

54

A cultured pearl and diamond three stone bar brooch

The central cultured pearl of approximately 8.2mm diameter, between millegrain collet set brilliant-cut diamonds, to a yellow precious metal bar mount stamped '585', *length 6.7cm.*

£600 - 800

55

A pair of pendent earrings

Each composed of a spherical drop of fine spiral ropetwist applied decoration, suspended from a similarly decorated terminal, stamped '750', on post fittings, *length 2.5cm, weight 13.85gm.*

£300 - 400

56

A 19th century marquise-shaped ring

Set throughout with graduated rose-cut diamonds, in foiled back settings, *length of panel 3.15cm, ring size P.*

£800 - 900

57

An amethyst and diamond cluster ring

The oval-cut amethyst within a surround of brilliant-cut diamonds, *cluster width 2.2cm, length 2.7cm, ring size M.*

£500 - 700

58

An amethyst and diamond dress ring and a pair of white stone and cultured pearl earpendants

The dress ring set with an oval-cut amethyst within a baguette and single-cut diamond surround to an 18ct white gold setting, together with a pair of 18ct gold cultured pearl and white stone earpendants, each earpendant with a spiralled bar with round-cut white stone accents to a cultured pearl drop, *ring size L, earpendants length 4cm.* (2)

£500 - 700

59

A single stone diamond ring

The brilliant-cut diamond within a pierced setting, formed as a triangle within a circle, *diamond weight approximately 0.85ct, ring size N.*

£500 - 700

A triangle within a circle is known to be a symbol from the Illuminati secret cult, founded in 1776 by the German, Adam Weishaupt, from Bavaria.

60

A French charm bracelet

The fancy-link bracelet suspending five assorted charms, comprising two spider webs with applied spider motifs, two numeral '13' pendants and a flower pendant with the words 'IL M'AIME', meaning 'He Loves Me', with partially struck lozenge maker's mark, owl import mark, *length 20.5cm, weight 12.65gm.*

£500 - 600

61

A charm bracelet

The yellow precious metal fancy baton-link bracelet stamped 'C Ltd', suspending a large collection of 9ct gold and yellow metal charms, to include a lighthouse, a well and a ballerina, *gross weight approximately 45gm.*

£400 - 600



48



49



50



51 (part)



52



53



54



55



56



57



58 (part)



59



60



61

62

A mid 19th century seed pearl necklace

The necklace with pierced chrysanthemum and foliate seed pearl panels, interspaced by strung seed pearls, to a half pearl set clasp, (some seed pearls deficient), together with three pairs of seed pearl earpendants, a seed pearl brooch, (later mounted), a seed pearl cross pendant, (later converted), on a reeded belcher-link chain, and two oval shell cameo brooches, *necklace length 44cm. (8)*

£500 - 700

See Inside front cover illustration

63

Two cultured pearl necklaces

The first with a graduated single strand of cultured pearls, to a marquise-cut diamond cluster clasp, the second a graduated single strand of cultured pearls, to a rose-cut diamond set barrel clasp, *lengths 44cm and 53cm respectively. (2)*

£300 - 500

64

A single strand graduated natural pearl necklace

Untested and unwarranted, to an old brilliant-cut diamond set clasp, in pinched collet setting, together with a multi-stand seed pearl necklace, to an enamel, seed pearl and hairwork clasp, and a single strand uniform cultured pearl necklace, to a sapphire and diamond set clasp, *first necklace length 35cm. (3)*

£500 - 700

65[≈]

A cultured pearl and vari gem-set necklace

The single strand of graduated cultured pearls to a crescent-shaped clasp of graduated old-cut diamonds, centred with a ruby, sapphire and diamond set foliate cluster, *length 49.5cm.*

£400 - 500

66

A cultured pearl and diamond necklace

Composed of two strands of graduated cultured pearls, measuring approximately 3.6mm to 8.1mm in diameter, to a circular clasp pavé set with graduated old brilliant and single-cut diamonds, *total diamond weight approximately 0.70ct, shortest length 38.4cm.*

£500 - 700

67

A slightly graduated cultured pearl necklace

The single row of slightly baroque cultured pearls to a Victorian trefoil clasp, set with graduated old brilliant-cut diamonds to central pearl, (pearl untested), mounted in gold and silver, *length 43.5cm.*

£500 - 700

68

A Victorian diamond and half pearl star brooch

Centred with an old and rose-cut diamond cluster, bordered by rays of graduated half pearls, (pearls untested), *length 5.3cm.*

£500 - 600

69

A cultured pearl, diamond and enamel necklace and a diamond and enamel ring

The double strand cultured pearl necklace to an old-cut diamond, blue enamel and half pearl panel clasp, (pearls untested), the ring with a brilliant and single-cut diamond cluster, to a tapered mount with blue enamel ground, *necklace shortest length 44cm, ring size N. (2)*

£500 - 700

70[≈]

A cultured pearl and freshwater pearl vari gem-set necklace

Composed of three rows of uniform cultured pearls, each approximately 6.3mm in diameter, to an 18ct gold panel clasp centred with an oval cabochon ruby and a row of oval-cut emeralds, bordered by brilliant-cut diamonds, maker's mark 'CG', in fitted case, *shortest length 37.5cm.*

£500 - 700

71[≈]

Boucheron: A cultured pearl, ruby and diamond necklace

Composed of three strands of uniform cultured pearls, with brilliant-cut diamond set spacer links, to a shaped rectangular panel centred with an oval cabochon ruby, to borders of similarly-cut diamonds, the signed 18ct gold clasp with diamond set detail and import marks for London 1981, in signed case, *shortest length 38cm.*

£500 - 700

63 (part)



64 (part)



65



66



67



68



69



71



70



72

A small collection of jewellery

To include a diamond set bracelet with flowerhead links, a cultured pearl and brilliant-cut diamond set pendant necklace, and a pink sapphire and diamond pendant and earring suite, *bracelet length 18cm.*

£600 - 800

73

An aquamarine and diamond pendant

The triangular mixed-cut aquamarine suspended from a trio of brilliant-cut diamonds, surmounted by a fluted diamond set bale, white precious metal mounted, on a fine curb-link chain stamped '375', *pendant length 3.6cm, chain length 39cm.*

£500 - 600

74

A cultured pearl and diamond pendant necklace

The cultured pearl of grey tint, approximately 11.9mm in diameter, suspended from a brilliant-cut diamond surmount, to a trace-link chain, (pearl untested), *diamond weight approximately 0.45ct, pendant length 2.9cm, chain length 47.1cm.*

£500 - 700

75

A diamond pendant and earring suite

The square pendant set with two baguette-cut diamonds, mounted in platinum, hallmarked, on fine curb-link chain, with a pair of matching baguette-cut diamond earstuds, *pendant length 1.05cm. (2)*

£500 - 700

76

A diamond single stone pendant necklace

The polished collet pendant mount set with a round brilliant-cut diamond, on a fine curb and bead-link chain, 18ct white gold mounted, *total diamond weight approximately 0.50ct, chain length 43cm.*

£500 - 700

77

A pair of 18ct gold mounted diamond cluster earstuds and a diamond hoop pendant on chain

The cluster earstuds set throughout with brilliant-cut diamonds, on post fittings, hallmarked for 18ct yellow gold, together with a diamond hoop pendant, set to both sides with a line of brilliants, white precious metal mounted, on a double row fine trace-link chain, clasp stamped '750', *earstuds diameter 8mm, pendant diameter 1.5cm. (2)*

£600 - 800

78

A diamond and pink sapphire half hoop ring and a pair of diamond earstuds

The ring collet set with a line of brilliant-cut diamonds, spaced by two circular-cut pink sapphires, to a white precious metal mount stamped '18ct', the earstuds claw set with brilliant-cut diamonds, stamped '8ct', *ring size M, earstuds total diamond weight approximately 0.30ct. (2)*

£400 - 500

79

A pair of rose quartz and diamond earpendants

Each pear-shaped rose quartz drop to a frame of brilliant-cut diamonds, below a circular-cut rose quartz and diamond cluster surmount, (one diamond deficient), the white precious metal mounts stamped '585', *length 3.5cm.*

£500 - 700

80

A blue topaz and diamond dress ring and a pair of earpendants

The ring claw set with a rectangular step-cut blue topaz, between bifurcated shoulders accented with brilliant-cut diamonds, to a white precious metal mount stamped '750', the earpendants with briolette-cut blue topaz drops, below brilliant-cut diamond surmounts, *ring size O, earpendants length 3.2cm. (2)*

£500 - 600

81

A diamond pendant and earstuds ensuite

Each pierced pear-shaped panel set with a brilliant-cut diamond, the pendant on a fine trace-link chain, 18ct white gold mounted, *pendant length 1cm, chain length 20cm. (2)*

£700 - 900

82

A seven stone diamond ring

The seven uniform brilliant-cut diamonds in square claw settings, white precious metal mount stamped '750', *total diamond weight approximately 1.4ct, ring size P½.*

£700 - 900

83

A diamond half hoop ring

Composed of seven graduated claw set marquise-cut diamonds, mounted in 18ct white gold, shank hallmarked, *total diamond weight approximately 1.55ct.*

£700 - 900

84

A diamond dress ring

The principal brilliant-cut diamond in a raised claw setting, to baguette and brilliant-cut diamond set shoulders, the white precious metal shank stamped '585', *ring size N.*

£700 - 900

85

Chaumet: A diamond set ring

The openwork band applied with rectangular panels, alternately set with brilliant-cut diamonds, the signed white precious metal mount stamped '750' and numbered '869579', *ring size N.*

£500 - 600

86

Three diamond rings

Comprising a band ring of brick-link chain design, set with brilliant-cut diamonds, white gold mount stamped '750', a band ring spaced with rubover set brilliant-cut diamonds, stamped '18k', and a seven stone ring claw set with marquise-cut diamonds, *first ring size G, second L. (3)*

£600 - 800

87

A pair of diamond earstuds

Each set with an old-cut diamond in illusion mount, on post fittings, white precious metal settings, unmarked, *total diamond weight approximately 0.8ct.*

£500 - 700



72 (part)



73



74



75



76



77



78



80



79



81



82



83



84



86



87



72 (part)



85





88

88
A late 18th century/early 19th century gold and enamel portrait miniature ring

The oval enamel panel depicting a lady, wearing a white dress, her fichu wrapped around her neck, with a black lace shawl, her powdered wig dressed with a white lace handkerchief, *length of panel 2.5cm*.
£500 - 700

The portrait miniature is attributed to William Bate (Irish, active circa 1799-1845).

89
A Swiss enamel brooch and earpendant suite

The oval enamelled brooch depicting a scene of Lake Geneva with Chateau de Chillon in the foreground and the Alps in the background, in plain mounts with ropetwist detail, unmarked mounts, with similarly decorated earpendants, *brooch length 4cm, earpendants length 4.3cm*. (2)
£500 - 700

90Y
A collection of jewellery

Comprising an Edwardian opal, demantoid garnet and seed pearl pendant, 15ct gold mounted, cased, a two stone opal drop pendant, the ring clasp stamped '15c', a hardstone cameo stickpin, the terminal carved to depict the profile of Mars, cased, a set of three coral studs, cased, a set of six mother 'o pearl buttons, cased, and a 9ct gold bar brooch, *first pendant length 6cm*. (6)
£600 - 800

91
A late Victorian/Edwardian seed pearl fringe necklace

The graduated fringe with three flowerhead accents, to a pearl set back chain, with a central detachable flower head drop, *necklace length 40.5cm*.
£500 - 700

92
A late 19th century micro-mosaic cross pendant

The Chi Rho cross motif decorated with inset micro-mosaic channels of floral and foliate sprays, to beaded terminals and ropetwist borders, centred with an oval panel depicting a dove amongst flowers, below a ropetwist decorated pendant bale, *length 6.7cm*.
£800 - 1,200

The Chi Rho cross is probably the oldest symbol used to denote the name of Christ, and has been found inscribed to the walls of Roman catacombs and in the cemeteries of early Christians. Chi and Rho are the first two letters in the Greek word for Christ and, when overlaid, produce the 'XP' of the Chi Rho symbol.



98A

93
Three seed pearl brooches

Comprising a diamond and seed pearl snowflake brooch/pendant, the central old-cut diamond bordered by graduated seed pearls, a seed pearl circlet brooch, (one pearl deficient), and a seed pearl and turquoise clover leaf brooch, *first brooch length 2.6cm*. (3)
£200 - 300

94
A pietra dura brooch and earpendants

The brooch with circular pietra dura panel depicting a vari-coloured floral spray, bordered by ropetwist and beaded decoration, the earpendants of conforming design, each oval pietra dura panel drop below a double chain-link suspension and panel surmount, with beaded borders, *brooch diameter 4.2cm, earpendants length 5.7cm*. (2)
£500 - 700

95
A diamond and enamel bar brooch

The star-shaped panel centred with a cushion-shaped diamond and rose-cut diamond cluster, within a blue enamel frame, later mounted to a knife-edge bar, *total diamond weight approximately 0.30ct, length 4.8cm*.
£300 - 400

96
A floral micro-mosaic brooch and a 9ct gold bangle

The brooch centred with a micro-mosaic inset floral spray against a black ground, within pierced decorated and engraved mount, the broad hinged 9ct gold bangle with foliate engraved decoration, *brooch length 6.3cm, bangle inner diameter 5.8cm, weight of bangle 30.9gm*. (2)
£600 - 800

97
A diamond dress ring and a diamond and half pearl ring

The first claw set with three old-cut diamonds, between crossover shoulders of scrolled design, highlighted with graduated rose-cut diamonds, the second asymmetrically set with a half pearl and old brilliant-cut diamonds, between crossover shoulders of rose-cut diamonds, inscription to interior dated 1904, *ring sizes P and M respectively*. (2)
£500 - 600

98
An emerald and diamond stickpin

The engraved clasped hand terminal accented with an old-cut diamond, with step-cut emerald below, suspending a fancy-link chain with further stick pin fitting, cased, *length 7.3cm*.
£100 - 150

98A
A collection of antique and later jewellery

Comprising a late 18th century memorial ring, the octagonal glazed hairwork panel to a seed pearl and turquoise border, with French inscription to reverse, a yellow sapphire single stone bar brooch, (sapphire untested for natural v/s synthetic origin), a Victorian gold, enamel and half pearl memorial locket, with interior hairwork panel, engraved with Baron's coronet and inscribed 'Albert, Lord Londesborough, Jan'y 1860', monogrammed, a polychrome enamel bird brooch, stamped '15ct', (some enamel damage), together with two pairs of paste and simulated pearl earpendants, a collection of hardstone fob seals, a collection of stickpins, etc, *first ring size H½*.
£700 - 800

Albert Denison, 1st Baron Londesborough, was a British Liberal Party politician and diplomat. Knighted in 1829, Denison was elected as Liberal Member of Parliament for Canterbury in 1835, and elevated to the peerage in 1850. Denison also served as First President of the British Archaeological Association and Vice-Admiral of the Yorkshire Coast.



89



90 (part)



91



92



93 (part)



94



95



96 (part)



97 (part)

90 (part)



97 (part)



98

99

An 18ct gold modern bangle

The rigid hoop bangle of abstract wirework foliate design, hallmarked, gross weight 41.6gm.

£600 - 800

100

An emerald ring and earstuds suite

The ring collet set with a rectangular step-cut emerald, 18ct gold mounted, the earstuds claw set with similarly cut emeralds, stamped 'k14', ring size L, earstuds length 1cm. (2)

£500 - 600

101

An emerald and diamond five stone ring

The central oval old-cut diamond between two step-cut emeralds, to two rectangular old-cut diamonds, all claw set in yellow gold, unmarked, total diamond weight approximately 0.75ct, ring size M.

£500 - 700

102

Two gem set rings

Comprising an emerald and diamond ring, the step-cut emerald claw set between single-cut diamond set shoulders, shank stamped '18ct, plat', the second a five stone cultured pearl ring, mounted in yellow gold, stamped '18ct', first ring size O. (2)

£500 - 700

103

An emerald and diamond three stone ring

The rectangular step-cut emerald claw set between brilliant-cut diamonds, the two colour precious metal mount stamped '18ct', total diamond weight approximately 1.0ct, ring size O.

£500 - 600

104

A large rock crystal cross pendant

The faceted rock crystal cross in plain gold cap, with suspensory loop, length excluding loop 11.3cm.

£600 - 800

105

Three diamond set rings

Comprising a diamond and green stone panel ring, the shaped rectangular panel centred with a brilliant-cut diamond, bordered by millegrained channels of rose-cut diamonds and step-cut green stones, stamped '585', a tourmaline and diamond panel ring, the oval abstract panel set with a circular-cut tourmaline and brilliant-cut diamonds, stamped '585', and another diamond set panel ring, of Art Deco style, first ring size R. (3)

£700 - 900

106

An emerald and diamond bombé ring

The oval mixed-cut emerald collet set between channels of square step-cut diamonds, bordered by pavé set brilliant-cut diamonds, the yellow precious metal mount stamped '750', ring size 1½.

£500 - 700

107≈

A jade and diamond dress ring

The oval cabochon jade collet set between trios of marquise-cut diamonds, yellow precious metal mounted, stamped '750', (jade untested for treatments or enhancements), ring size M.

£600 - 700

108

A diamond and sapphire set dress ring

The tapered, fluted band collet set with a brilliant-cut diamond and pear-shaped sapphire, yellow precious metal mounted, ring size I.

£600 - 700

109

An emerald and diamond dress ring

Of abstract cluster design, claw set with oval mixed-cut emeralds in scatter formation, with channels of single-cut diamonds between, to a trifurcated hoop, ring size J½.

£500 - 700

110

Lalaounis: A ring

The stylised buckle of hammered and textured design, with maker's mark, numbered, in signed pouch, ring size L (leading edge).

£400 - 600

111

A green agate and diamond dress ring

The oval green agate cabochons collet set to a trifurcated hoop, collet set with four old-cut diamonds, 9ct gold mounted, (green agate untested for use of treatments/enhancements), ring size P.

£400 - 600

112

Cropp & Farr: A 9ct gold mounted opal bracelet

The oval cabochon opals in plain collet settings, with stylised bow-shaped links between, 9ct gold mounted, maker's stamp C & F, fully hallmarked for London 1993, with Garrards case, bracelet length 18.3cm.

£500 - 700

113

An emerald and diamond bracelet

The alternating circular-cut emeralds and brilliant-cut diamonds in white precious metal four claw settings, to a yellow precious metal polished brick-link bracelet, stamped '750', length approximately 18.5cm.

£500 - 700

114

A diamond set tennis bracelet

The trefoil links composed of claw set brilliant-cut diamonds, mounted in yellow gold, clasp stamped '14k', total diamond weight approximately 6ct, length 18cm.

£1,000 - 1,500

115

An emerald and diamond ring

The oval mixed-cut emerald collet set within a pierced panel surround set with brilliant-cut diamonds, white gold mount stamped '18ct', ring size M.

£700 - 800

116

An opal dress ring

The oval cabochon opal in a scrolled wire-work setting with heart detail, the shank stamped '585', opal length 2.2cm, ring size Q.

£500 - 700

117

An emerald and diamond ring

The square cluster ring centred with a step-cut emerald claw set within a panel surround of brilliant-cut diamonds, with fancy square-cut diamond shoulders, white gold mount stamped '18ct', total diamond weight approximately 0.9ct, ring size O.

£600 - 700



99



100



105



101



102



104



106



103



107



108



109



110



112



111



113



114



115



116



117

118

A gem set butterfly pendant

The outspread wings pavé set with rose-cut diamonds, highlighted with mixed-cut sapphires, to a sapphire and rose-cut diamond abdomen, cultured pearl thorax, rose-cut diamond head and antennae, and cabochon ruby eyes, mounted in gold and silver, suspended on a fine belcher-link chain, *width 4.6cm*.

£700 - 900

119

Two pairs of gem set earpendants

Comprising a pair of sapphire and diamond cluster earpendants, suspended from diamond set surmounts, and a pair of sapphire, diamond and moonstone earpendants, *first earpendants length 2.4cm*.

(2)

£700 - 900

120

A sapphire and diamond panel ring

The shaped oval panel millegrain set with three old brilliant-cut diamond and triangular-cut sapphire star motifs, bordered by graduated single-cut diamonds, the two colour precious metal mount stamped '18ct', *ring size P*.

£400 - 500

121

Five vari gem-set rings

Comprising a sapphire and diamond five stone ring, alternately set with graduated circular-cut sapphires and old-cut diamonds, stamped '18ct', a turquoise and diamond half hoop ring, a half pearl, turquoise and diamond half hoop ring, a rose-cut diamond set signet ring, and a half pearl cluster ring, (pearls untested), *first ring size O*.

£600 - 800

122

An Art Deco sapphire and diamond panel ring

The pierced rectangular panel with a central oval-cut sapphire, within a single cut diamond and step-cut sapphire set shaped surround, *ring size R*.

£800 - 1,200

123

A sapphire and diamond ring

The cushion-shaped sapphire between two brilliant-cut diamonds, to marquise-cut sapphire set shoulders, within a pierced scrolling gallery, *total diamond weight approximately 0.35ct, ring size M½*.

£400 - 600

124

A diamond full hoop eternity ring

Set throughout with brilliant-cut diamonds in collet settings, with claw detail, white precious metal mounted, unmarked, *total diamond weight approximately 2.0ct, ring size P*.

£800 - 1,200

125

A diamond cluster ring

The flowerhead cluster of graduated brilliant-cut diamonds to a two colour precious metal mount, stamped '18ct', *total diamond weight approximately 2.10ct, ring size M½*.

£1,000 - 1,500

126

An Art Deco sapphire and diamond panel ring

The pierced lozenge-shaped panel set with four oval-cut sapphires with two rows of rose-cut diamond between, and a central old-cut diamond accent, *ring size O*.

£800 - 1,200

127

A diamond cluster ring

The central brilliant and baguette-cut diamond cluster claw set within a border of further baguette-cut diamonds, white precious metal mounted, stamped '18ct', *ring size R*.

£150 - 200

128

Three gem set rings

The first set with seven brilliant-cut diamonds in illusion settings, the shank stamped '18ct', together with a sapphire and diamond cluster ring, the shank stamped '18ct', and an 18ct gold ruby and single-cut diamond five stone ring, *first ring size J, second N½*. (3)

£500 - 700

129

A sapphire and diamond cluster ring

Claw set with a cluster of brilliant-cut diamonds, bordered by circular-cut sapphires, the white precious metal mount stamped '18ct', *ring size M*.

£150 - 200

130

A sapphire and diamond band ring

The concave band ring spaced with rubover set brilliant-cut diamonds, to central tension set mixed-cut sapphire, mounted in 18ct white gold, hallmarked, *ring size L*.

£500 - 700

131

A sapphire and diamond dress ring

The pale cushion-cut sapphire heavily abraded, within a four claw mount and pierced setting, between stepped diamond set shoulders, shank stamped 'plat', (shank mis-shapen), *approximate sapphire dimensions: width 13mm, length 13mm, depth 11mm*.

£1,000 - 1,500

132

A pair of sapphire and diamond cluster earstuds and a sapphire and diamond ring

The circular-cut sapphires claw set within surrounds of millegrain collet set rose-cut diamonds, to later stud fittings, the ring with a marquise-shaped cluster of mixed-cut sapphires and old brilliant-cut diamonds, between scrolled shoulders, *ring size N*. (2)

£500 - 600

133

A sapphire and diamond bangle and a ring

The hinged bangle in yellow gold, unmarked, claw set to the front with graduated mixed-cut sapphires spaced by pairs of old brilliant-cut diamonds, the ring set with round-cut sapphires and old brilliant-cut diamonds, mount damaged, *bangle inner diameter 5.7cm*. (2)

£500 - 600



118



119



120



121 (part)



122



123



124



125



126



127



128 (part)



129



130



128 (part)



131



133



132 (part)



134

A sapphire, diamond and seed pearl pendant

The oval pale blue mixed-cut sapphire collet set within a pierced surround set with rose-cut diamonds, to a border of seed pearls, suspended on a later belcher-link chain, *pendant length 3cm.*

£500 - 700

135

A sapphire and diamond cluster pendant

The oval mixed-cut sapphire claw set within a border of brilliant-cut diamonds, below a brilliant and single-cut diamond set bale, two colour precious metal mounted, suspended from a white metal belcher-link chain, *pendant length 2.9cm.*

£500 - 700

136

Tiffany: A platinum and diamond heart pendant necklace

The openwork heart-shaped pendant set with graduated brilliant-cut diamonds, to a fine trace-link chain, signed, with import marks for London 1996, *pendant length 1.5cm, chain length 41cm.*

£400 - 600

137

A diamond and sapphire line pendant

The vertically set pendant with two round mixed-cut sapphires, with a brilliant-cut diamond below, with bar spacers between, stamped '14k', on fine snake-link chain, stamped '14kt', *pendant length 2.3cm.*

£400 - 600

138

An aquamarine pendant

The cushion-shaped mixed-cut aquamarine claw set, on suspensory loop, *aquamarine weight approximately 20ct.*

£600 - 800

139

A ruby and diamond bangle

The hinged crossover bangle set to each side with a trio of oval mixed-cut rubies, pavé set with brilliant-cut diamonds between, white precious metal mounted, *inner diameter 5.6cm.*

£600 - 800

140

A yellow precious metal and emerald bangle

Of hinged form, the upper section centred with a panel of five square step-cut emeralds, each individually mounted, to tubular hollow bangle, the back engraved with foliate detail, clasp stamped '750', *inner diameter 5.8cm, total emerald weight approximately 2.60ct, total weight 12.26gm.*

£800 - 1,000

141

A ruby and diamond hinged bangle

The upper section alternately set with oval graduating mixed-cut rubies, and spaced by pairs of single-cut diamonds, claw mounted, to white precious metal setting, *inner diameter 5.5cm.*

£1,200 - 1,500

142

An early 20th century diamond crossover ring

Each arm terminating in a claw set brilliant-cut diamond, with collet set baguette-cut diamond shoulders, mount stamped 'pt', *total diamond weight approximately 1.0ct, ring size N.*

£800 - 1,200

143

An opal and diamond ring

The circular cabochon opal within a border of single-cut diamonds, to a white precious metal mount stamped '18ct', *ring size M.*

£500 - 700

144

A black opal and diamond cluster ring

The shallow cabochon opal displaying a play of vibrant blues and greens, in claw setting, within a surround of brilliant-cut diamonds, 18ct gold mounted, *ring size O.*

£500 - 600

145

A three stone tanzanite and diamond ring

The trilliant-cut tanzanite in three claw setting, between two tapered baguette-cut diamonds, white precious metal shank stamped '18ct', with Report from the Tanzanite Foundation, *tanzanite 0.75ct, total diamond weight approximately 0.20ct, ring size N.*

£200 - 400

146

A sapphire and diamond triple cluster ring

The graduated oval-cut sapphires claw set within a border of brilliant-cut diamonds, 18ct gold mounted, *ring size P.*

£300 - 400

147

A diamond single stone ring

The round brilliant-cut diamond in claw setting, to an 18ct two colour gold mount, *total diamond weight approximately 0.35ct, ring size O½.*

£300 - 400

148

A diamond eternity band

The band set throughout with brilliant-cut diamonds, mounted in white precious metal, *total diamond weight approximately 1.50ct, ring size K.*

£500 - 600

149

A diamond cluster ring

The circular cluster set with graduated old brilliant and single-cut diamonds, between diamond set shoulders, yellow precious metal mounted, *ring size N½.*

£500 - 700

150

Two diamond dress rings

The first ring with a removable marquise-shaped diamond cluster between channel set diamond shoulders, the white precious metal setting stamped '14k', together with a dress ring set with a central marquise-cut diamond and brilliant and tapered baguette-cut diamond shoulders, the shank stamped '14k', *first ring size N½, second ring size N.*

£800 - 1,000

151

An aquamarine dress ring

The large rectangular mixed-cut pale green stone claw set within a four petal surround pavé set with round-cut white stones, *ring size L½.*

£500 - 700

152

A collection of jade jewellery

Comprising a jade and diamond brooch/pendant, the circular jade disc centred with a brilliant-cut diamond floral cluster, below a similarly set scrolling surmount, together with a cabochon jade set brooch, a jade and cultured pearl dress ring, and a pair of jade and cultured pearl knot earclips, (all jade untested for use of treatments/enhancements), *first brooch/pendant length 4cm. (4)*

£600 - 800



134



135



136



137



138



139



140



141



142



143



144



145



147



148



146



149



150 (part)



150 (part)



151



152 (part)



153

A diamond set pendant on chain

The oval panel pendant engraved with foliage and wriggle work borders, centred with a marquise-cut diamond, with glazed verso, inscribed to interior, on a 9ct gold curb-link chain, *pendant length 3.3cm, chain length 54cm.*

£500 - 600

154

A diamond cluster ring

The raised brilliant-cut diamond within a similarly-cut diamond surround, mounted in 18ct yellow gold, *total diamond weight approximately 0.70ct, ring size N.*

£600 - 800

155

A Victorian five stone diamond ring

The five graduated old brilliant-cut diamonds claw set above scrolled gallery and reeded shoulders, *total diamond weight approximately 1.3ct, ring size L.*

£700 - 900

156~

An early 20th century sapphire, ruby and diamond set bracelet

The bracelet spaced with cabochon rubies and vari-coloured sapphires of pale pink, blue and blue-grey hues, each cabochon stone interspaced by a diamond set four petal flowerhead motif, with modern replacement ring bolt clasp fittings, *length 19cm.*

£800 - 1,200

See back cover illustration

157

A gold set chalcedony panel bracelet

The translucent reeded squared panels within textured foliate surrounds, *length 16.4cm.*

£500 - 700

158

A hardstone intaglio brooch

The octagonal hardstone panel carved to depict a scene of huntsmen, birds, flowers and foliage, to a yellow precious metal frame engraved with scrolls and wrigglework borders, *length 4cm.*

£500 - 700

159

A Victorian half pearl and diamond set locket

The oval gold hinged locket applied with a fancy cross motif, highlighted with graduated half pearls and rose-cut diamonds, *length 5.2cm.*

£500 - 700

160

Two diamond five stone rings

Each claw set with graduated cushion-shaped diamonds, precious metal mounted, *ring sizes R and O. (2)*

£600 - 800

161

A diamond four stone ring

The scroll carved hoop set with old brilliant-cut diamonds, to a yellow precious metal mount stamped '18ct', *ring size L½.*

£600 - 800

162

Two diamond cluster rings

The first an oval millegrained cluster of graduated old-cut diamonds, stamped '18ct', the second a flowerhead cluster of rose-cut diamonds, stamped '18c', *ring sizes L and R½ respectively. (2)*

£700 - 900

163

A Victorian cabochon garnet ring and assorted cufflinks and studs

The ring with round cabochon garnet in yellow gold mount with floral engraved detail, together with a pair of round cabochon garnet collar studs, a similar matched oval pair, a pair of oval yellow gold cufflinks with engraved crests, and another navette-shaped pair, *ring size P.*

£600 - 800

164^Y

A Victorian gold reverse painted rock crystal brooch

The circular rock crystal cabochon reverse carved and painted to depict a blue and yellow hummingbird, seated on a fern branch, in a bloomed gold mount with applied bead and ropetwist detail, glazed locket verso, together with a small carved coral cameo brooch, three shell cameo brooches, and an amethyst set locket pendant, *first brooch diameter 3.9cm. (6)*

£700 - 900

See front cover illustration

165

A Victorian seed pearl and enamel brooch

The entwined knot motif of part reeded and frosted finish, applied with ropetwist scrolls and beaded decoration, set to the centre with a seed pearl and enamel star, later adapted with brooch fitting, *length 4.5cm.*

£250 - 300

166^Y

A collection of 19th century and later jewellery

Including a Victorian garnet set knot brooch with pendant drop, cased, a 19th century carved floral brooch, in fitted retailers case from Naples, a Victorian circular gemset brooch, a Scottish vari-coloured hardstone garter brooch, assorted white paste set brooches and hair combs, a pietra dura brooch etc.

£500 - 700

167

A Victorian serpent bangle

The sprung hinged bangle modelled as a coiled serpent, the scroll engraved head set with a pear-shaped cabochon garnet, with matching garnet eyes, *inner diameter 5.2cm.*

£500 - 700



153



154



157



155



156

160 (part)



160 (part)



161



158



159



163 (part)



164 (part)



162



164 (part)



165



166 (part)



166 (part)



167



182

168

A Russian turquoise enamel and rose-cut diamond oval brooch

The turquoise enamelled high domed brooch with rose-cut diamond set ivy leaf decoration, with makers mark 'S.A' for Samuel Ardt and St Petersburg assay mark, the fitted case with retailer's signature 'Nichols & Plinke, St Petersburg', *width 3.5cm.*

£500 - 700

Nichols & Plinke was formed in 1829, when the Englishman Charles Nichols formed a partnership with the workshop of William Plinke in St Petersburg. The firm of Nichols and Plinke was much favoured by the Imperial Court in the 19th century and was known as 'The English Shop' in St Petersburg.

169

A diamond single stone ring

The round brilliant-cut diamond claw set between triangular panel shoulders, each millegrain set with a trio of single-cut diamonds, stamped '18ct', *ring size M½.*

£500 - 700

170

A turquoise and diamond cluster ring

The oval cabochon turquoise claw set within a border of old-cut diamonds, two colour precious metal mounted, *ring size Q.*

£600 - 800

171

A turquoise and diamond three stone ring and a diamond five stone ring

The first ring with an oval cabochon turquoise between two old cut diamonds, the shank stamped '18ct plat', together with a graduated five stone old brilliant-cut diamond ring, the shank stamped '18ct', *first ring size Q, second Q½. (2)*

£600 - 800

172

Cropp & Farr: An 18ct gold and diamond floral brooch

The two flowerheads each centred with a brilliant-cut diamond cluster, with diamond detail to the tips of the petals, stamped C & F, full hallmark for London 1988, *length 5.8cm.*

£500 - 700

173

A diamond band ring and a pair of diamond earrings

The band ring composed of graduated trios of channel set brilliant-cut diamonds, yellow gold mount hallmarked for 18ct gold, the earrings modelled as pairs of flowers, set with brilliant-cut diamonds, mounted in yellow gold, *ring size K½. (2)*

£600 - 800

174

Cartier: A pair of turquoise flower earclips

Each openwork flowerhead motif centred with a cluster of cabochon turquoise, signed and numbered 'N9855', *diameter 1.95cm.*

£300 - 500

175

A diamond single stone ring

The round brilliant-cut diamond in an illusion setting, 18ct gold mounted, *total diamond weight approximately 0.75ct, ring size N½.*

£700 - 900

176

An aquamarine and diamond ring

The fancy-cut cushion-shaped aquamarine millegrain collet set within a surround of brilliant-cut diamonds, with larger collet set stones to the shoulders, shank stamped '18ct', *ring size M.*

£900 - 1,000

177

An aquamarine and diamond dress ring

The square cushion-shaped fancy-cut aquamarine collet set within a surround of brilliant-cut diamonds, with millegrain set princess-cut diamonds to the cardinal points, shank stamped '18ct', *ring size O.*

£700 - 800

178

A topaz and diamond dress ring

The oval fancy-cut blue topaz within a brilliant-cut diamond accented claw setting, between similarly cut diamond set shoulders, 18ct white gold mounted, *ring size M.*

£500 - 600

179

A Victorian serpent bracelet

Centred with an entwined serpent, the head inset with a line of turquoise, with garnet eyes, the bracelet composed of engraved rectangular batons, and later safety clip to clasp, *length 20.1cm.*

£400 - 600

180

A yellow precious metal curb-link bracelet

Of flattened design, the clasp stamped '750', *gross weight approximately 39.5gm.*

£700 - 800

181

A turquoise bracelet

The oval cluster links set with shaped cabochon turquoise, mounted in yellow precious metal, unmarked, *length approximately 17cm.*

£500 - 600

182[≈]

A ruby and diamond point five stone ring

The graduated oval-cut rubies with rose-cut and single cut diamond accents, the shank stamped '18ct' *ring size O.*

£800 - 1,000



168



169



170



171 (part)



171 (part)



172



173



174



175



176



177



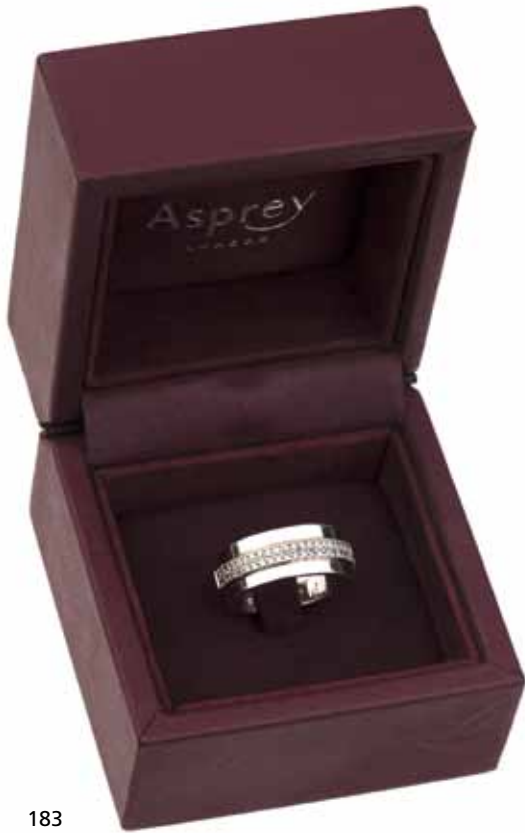
178



179

180

181



183

183

Asprey: An 18ct white gold and diamond set ring

The wide flat-section ring with a rotating outer half hoop band, set with two rows of brilliant-cut diamonds, numbered '51', in signed box and case, *ring size L*.

£500 - 600

184^Y ≈

A jade two row necklace and a coral necklace

The jade necklace composed of two uniform rows, untested for treatments, together with a coral necklace composed of graduated polished and shaped beads, *jade shortest length 51.5cm, coral length approximately 144cm*.

£600 - 700

185^Y

A coral brooch and necklet

The Victorian circular gold brooch with applied ropetwist and bead decoration, suspending five graduated coral beads, stamped 'Pierret' with indistinct assay mark, together with a necklet of pierced square panels with canetille work and coral accents, *brooch width 5cm, necklace length 42cm*.

£500 - 700



189 (part)

186

A composite diamond set necklace

The necklace with marquise set panels and pierced foliate panels, set with rose and marquise-cut diamonds, has repairs, with two spare marquise shaped links, *length 35cm*.

£200 - 300

187

A white paste rivière necklace

The slightly graduating old-cut stones in claw settings, *length 37cm*.

£200 - 300

188

A rock crystal rivière necklace

Composed of graduating oval mixed-cut stones, in linked collet settings, together with a rock crystal cluster brooch and a pair of tear-drop shaped rock crystal earpendants, *necklace length 39cm*. (3)

£300 - 400

189

A collection of jewellery

Including a white paste bracelet, the shaped foliate panels spaced by clusters, a white paste set circular double sided glazed locket on chain, an 18ct gold diamond cluster ring, a rose-cut diamond cluster ring, a seed pearl set locket, a garnet set horseshoe brooch, a sapphire and diamond cluster bar brooch, together with a collection of brooches and further jewellery.

£500 - 700

184 (part)



185



186



166 (part)



166 (part)



166 (part)

187



188 (part)





190 (part)

190

A collection of jewellery

To include a Danish silver panel bracelet, by Christian Veilskov, with stamped marker's marks to clasp, a Victorian gold oval locket, with engraved monogram, on later modern 9ct gold flattened curb-link chain, a Victorian oval micro-mosaic and goldstone brooch, a hardstone cameo set bar brooch, an early 19th century garnet and glazed brooch, a Victorian silver and banded onyx set locket back pendant, an 18ct gold opal and diamond ring, a white metal floral panel necklace, and further miscellaneous brooches, chains etc.

£400 - 600

191≈

A 19th century large green paste dress ring and a jade dress ring

The first set with large oval mixed-cut pale green paste, in gilt metal setting, the second mounted with a carved jade asymmetric panel, to pierced mount, *first ring setting length approximately 4.7cm.* (2)

£300 - 400

See inside back cover illustration

192≈

A Mughal antique lotus-shaped jade flowerhead

The six petalled design centred with a red and green paste cluster, in gilt metal setting, the reverse pierced decorated with scrolling foliage detail, later adapted to a brooch with pin fitting, together with three large 19th century Indian hardstone set brooches/slides, gilt metal mounted, each with engraved scrolling decoration to the reverse, *first brooch width 6.5cm.* (4)

£300 - 400

See inside back cover illustration

193^Y

A tortoiseshell necklace

The flat baton links to central turtle pendant with insized decoration, *pendant length 6.8cm.*

£100 - 150



193

194

A collection of cultured pearl jewellery

Comprising a single strand freshwater cultured pearl necklace, to a gilt spherical clasp stamped '925', a similar necklace, the engraved clasp stamped '9ct', a diamond and cultured pearl pendant, a pair of mabé pearl and citrine earpendants, and a pair of mabé pearl earclips, *first necklace length 47cm.* (5)

£300 - 400

194A

A cultured pearl and diamond pendant

The cultured pearl drop of pinkish hue, below a textured branch surmount, highlighted with marquise and brilliant-cut diamonds, 18ct white gold mounted, on a fine curb-link chain, *pendant length 3.6cm.*

£300 - 400

195

A cultured pearl, sapphire and diamond necklace

The clasp with a central oval-cut sapphire within a surround of brilliant-cut diamonds, stamped '750', to a uniform two row cultured pearl necklace with yellow metal bead spacers near the clasp, *shortest length 44cm.*

£700 - 900

196

A cultured pearl single row necklace

The necklace composed of slightly graduated cultured pearls, ranging from approximately 6mm to 8mm diameter, of varying shades of pink, peach, silver and yellow, to a spherical ball clasp, stamped '750', (pearls untested for treatments), *length 46.5cm.*

£300 - 400

197

A kunzite and diamond dress ring

The oval mixed-cut kunzite claw set between fancy scrolling shoulders highlighted with star motifs, pavé set throughout with brilliant-cut diamonds, white precious metal mounted, *ring size Q.*

£500 - 700

198

Pravins: A tourmaline and diamond ring

The marquise-cut pink tourmaline claw set within a surround of small brilliant-cut diamonds, between diamond set shoulders, mounted in 18ct white gold, shank hallmarked and signed, *ring size M.*

£500 - 600



194 (part)

194A

195

196

197

198

199

A diamond flowerhead cluster ring

The old-cut diamonds in a millegrained surround to trifurcated shoulders, the shank stamped '18ct Plat', *ring size Q*.

£500 - 600

200

A diamond necklace

The central brilliant-cut diamond cluster between ribbon bow motifs of baguette-cut diamonds and further brilliants, suspending a marquise-cut diamond set drop below, on a fine belcher-link chain, stamped '750', *length 39cm*.

£500 - 700

201

A cultured pearl and diamond crescent brooch

Designed as an asymmetric crown and crescent entwined motif, highlighted with graduated cultured pearls and old-cut diamonds, *length 6cm*.

£150 - 250

202

Two diamond three stone rings

The first set with graduated emerald-cut diamonds in a platinum setting, the second set with graduated princess-cut diamonds in a platinum setting, *first ring size O, second L. (2)*

£600 - 800

203

A diamond set dove brooch

Modelled as a dove in flight, the outstretched wings and body highlighted with graduated old and rose-cut diamonds, the head with cabochon ruby eyes, later mounted brooch pin, *width 4cm*.

£500 - 600

204

A diamond cluster ring

The openwork setting with a cluster of graduated old-cut diamonds, white precious metal mounted, stamped '18ct', *ring size Q*.

£400 - 600

205

A diamond panel ring

The pierced and millegrained rectangular panel set with graduated old and single-cut diamonds, white precious metal mounted, *ring size I½*.

£500 - 700

206

A diamond and opal brooch

Of double tear-drop outline, later inset with two opal cabochons, and later added old-cut diamonds to the border, *length 3.5cm*.

£600 - 800

207

Two diamond cluster rings

The first with seven brilliant-cut diamonds in an 18ct gold setting, together with a 9ct gold diamond cluster ring, *ring sizes N and M½ respectively. (2)*

£300 - 400

208

A diamond cluster ring

The central brilliant-cut diamond in raised claw setting, bordered by tapered crossover shoulders set with further brilliants, to a reeded hoop, white precious metal mounted, *ring size M*.

£400 - 600

209

An Art Deco style diamond ring

The pierced marquise-shaped panel set with brilliant-cut diamonds, the shank stamped '18k', *ring size N½*.

£1,000 - 1,500

210

A diamond single stone ring

The brilliant-cut diamond claw set between diamond set shoulders, the white precious metal shank numbered but not hallmarked, *central diamond weight approximately 0.90ct, ring size N*.

£500 - 600

211

A diamond cluster style brooch

Of flowerhead design, set throughout with brilliant-cut diamonds, white precious metal mounted, unmarked, *total diamond weight approximately 1.25ct, diameter 2.3cm*.

£500 - 700

212

A diamond single stone ring

The round brilliant-cut diamond claw set within a white precious metal mount, stamped '18ct', *total diamond weight approximately 1.0ct, ring size M*.

£700 - 900

213

A Victorian shell cameo brooch and a diamond and cultured pearl quatrefoil bar brooch

The shell cameo depicting the mask of Medusa, with wings in her hair and entwined serpents, within ropetwist decorated mount, together with a cultured pearl and diamond set pierced quatrefoil, on a later bar brooch fitting, *cameo length 4.1cm. (2)*

£500 - 700

214

A diamond three stone ring

The graduated round brilliant-cut diamonds in claw settings, the shank stamped '18ct', *total diamond weight approximately 1.30ct, ring size M*.

£500 - 600

215

A diamond single stone bar brooch

The cushion-shaped diamond claw set to a white precious metal bar mount, stamped '18ct', *length 5.1cm*.

£500 - 700



199



201



202 (part)



200



203



202 (part)



204



205



206



207 (part)



208



209



210



211



212



213 (part)



214



215



216 (part)

216

A quantity of jewellery

Including two sovereigns, 1900 and 1911, a Victorian diamond set oval brooch, a three colour diamond set heart-shaped locket, a 9ct gold propelling pencil by Sampson Morden & Co, a coral bead necklace, a 9ct gold curb-link chain necklace, a 9ct gold anchor link chain bracelet, a snake-link chain, stamped '585', an unmounted pear-shaped amethyst, an unmounted pear-shaped citrine, and miscellaneous items.

£500 - 700

This lot is being sold on behalf of the UK charity PACE, an Aylesbury based charity and school providing intensive input for children with motor disorders such as Cerebral Palsy. (Charity number 1011133). The items have been kindly donated, and are being offered for sale at NO RESERVE.

217

A cased suite of Victorian shell cameo jewellery

Comprising a brooch and a pair of earpendants, each carved to depict a bacchante, together with a further shell cameo brooch depicting a bacchante, in a gold ropetwist mount, stamped '9ct', *brooch length 5.5cm.*

£600 - 800

218

A shell cameo brooch depicting St George and the Dragon

The oval shell cameo carved to depict St George on his steed spearing the dragon, in a twist decorated mount, *cameo length 5cm.*

£300 - 500

219

A pair of Victorian agate cameo pendants

The black and white agate cameos carved to depict Hera/Juno and Demeter/Ceres in profile, in Archaeological Revival mounts with applied bead and ropetwist detail, each suspending a fringe of graduated tapered drops below, on later plain suspensory loops, one on fine fetter and belcher-link chain necklace. (2)

£500 - 700

220

A Victorian shell cameo brooch

Relief carved with the head of a bacchante, with fruiting vines in her hair, within gold mount, with applied ropetwist and guilloche border, *length 3.8cm.*

£300 - 400

221^Y

A collection of Victorian and later jewellery

Comprising a shell cameo brooch, the oval cameo carved to depict the profile of Athena, Greek goddess of War, to a later mounted ropetwist and wirework decorated mount, with glazed verso, two shell cameo pendant drops, of similar design, a fancy-link Albert chain, an Art Nouveau style enamel pendant, of sinuous floral design, stamped '9ct', an Edwardian seed pearl brooch, inscribed to reverse, a citrine fringe necklace, etc, *first brooch length 5.6cm.*

£500 - 800



226

222^Y

Two Victorian brooches, a pendant and an earpendant

Comprising a hardstone cameo and enamel brooch, the cameo carved to depict a classical female figure, within a blue and white enamel dentine border, applied with ropetwist and beaded decoration, stamped '16', with later brooch fitting, a pendant ensuite, of conforming design, and a coral brooch and earpendant, each oval coral cabochon within beaded and ropetwist borders, brooch with glazed verso, *first brooch length 2.6cm.* (4)

£500 - 700

223

Three shell cameo brooches

The first depicting the profile of a Bacchante, with closed back setting within a pierced foliate border, together with a shell cameo depicting a penitent child in a rural landscape, and a conch shell cameo depicting the goddess Demeter, *first brooch length 6cm.* (3)

£500 - 700

224^Y

A pair of 19th century lava cameo bracelets

Each bracelet collet set with a line of vari-coloured lava and coral cameos, carved to depict a variety of classical portraits, with fine belcher-link connections between, convertible to a necklace, with possibly Eastern European marks, *each bracelet length 18.5cm.* (2)

£600 - 800

225

A shell cameo brooch

The brooch depicting two boys in 17th century costume, the younger boy holding a dove on a string, the older a book, within ropetwist decorated setting stamped '9ct', *cameo length 4.7cm.*

£300 - 400

226

An early 20th century moss agate and diamond box

The moss agate body of hinged rectangular form, applied with pierced and millegrained clasp and hinges of geometric design, highlighted with rose-cut diamonds, stamped with indistinct lozenge-shaped maker's mark and French platinum dog's head mark, (cracks and repairs to base), *length 8.4cm.*

£500 - 600



217 (part)



218



219 (part)



213 (part)



222 (part)



220



221 (part)



223



225

224

227

A pair of Victorian style diamond earpendants

The pear-shaped hoops with foliate drops within, set throughout with graduated brilliant and single-cut diamonds, mounted in white gold, stamped '750', length 19mm.

£750 - 850

228

An Edwardian diamond set choker slide

Composed of an open oval hoop of flowers and foliage, with bow detail, set throughout with rose-cut and single-cut diamonds, the reverse applied with two vertical bars, together with two velvet ribbon chokers, with fasteners, length 3.2cm.

£800 - 1,200

229^Y

A diamond and cultured pearl pendant and a collection of jewellery

The pendant of openwork trefoil design, centred with a baroque cultured pearl between graduated old and rose-cut diamond borders, suspending a cultured pearl drop below, on a fine trace-link chain, together with an early 19th century seed pearl and hairwork memorial ring, inscribed, a late Victorian hairwork memorial brooch, inscribed, a tortoiseshell and piqué work purse, a turquoise half hoop ring, with floral and foliate engraved shank, (two stones deficient), a silver mounted scent bottle, a paste brooch, etc, first pendant length 4cm.

£800 - 1,200

230

An Edwardian diamond ribbon bow brooch

The slim bow design set throughout with brilliants and single-cut diamonds, millegrain edged, white precious metal mounted, unmarked, with case, length 5.2cm.

£400 - 600

231

Boodle & Dunthorne: A diamond half hoop ring

Set with a line of princess-cut diamonds, to a platinum band, with maker's mark 'B&D', ring size L½.

£500 - 700

232

A diamond full hoop eternity ring

The white precious metal mount set throughout with old-cut diamonds, ring size N.

£600 - 800

233

A diamond full hoop eternity ring

The white precious metal mount set throughout with old brilliant-cut diamonds, ring size M½.

£1,000 - 1,500

234

A diamond single stone ring

The old brilliant-cut diamond in claw setting, the white precious metal mount stamped '18c plat', total diamond weight approximately 0.85ct, ring size N.

£700 - 900

235

A diamond cluster brooch and a diamond ring

The target cluster brooch set with graduated old brilliant-cut diamonds, to a similarly set spaced surround, the Edwardian crossover ring millegrain set with graduated old brilliant-cut diamonds, brooch diameter 2.3cm, ring size Q½. (2)

£800 - 1,000

236

A diamond bow brooch

The asymmetric ribbon bow pavé set with graduated old and single-cut diamonds, two colour precious metal mounted, length 4cm.

£600 - 800

237

A diamond dress ring

The pierced shaped panel ring set throughout with graduated brilliant-cut diamonds, mounted in white precious metal, stamped '18ct', ring size M.

£650 - 750

238

An Art Deco style diamond dress ring

The two principal brilliant-cut diamonds in octagonal settings, between stepped shoulders set with small brilliants, mounted in white precious metal, total diamond weight approximately 1.0ct, ring size O.

£950 - 1,000

239

A diamond single stone ring

The cushion-shaped old-cut diamond in claw setting, white precious metal mounted, ring size L½.

£500 - 700

240

An Edwardian diamond panel brooch

The rectangular openwork panel with foliate swag detail, set throughout with graduated brilliant and rose-cut diamonds, reverse engraved '18ct', length 4.55cm, principal diamond weight approximately 0.65ct.

£800 - 1,200

241

A diamond panel brooch

The octagonal panel of openwork geometric design, centred with an old-cut diamond to millegrained borders of old and single-cut stones, white precious metal mounted, in case signed 'A. Fattorini, Harrogate', with retailer's valuation document dated 1947, length 5.2cm.

£500 - 600

242[≈]

A collection of jewellery

Comprising a 9ct white gold, sapphire and mother o' pearl dress set, a pair of cufflinks and three dress studs, together with an 18ct gold ruby and diamond ring, and two white precious metal wedding bands stamped 'plat'.

£400 - 600

243

A sapphire and diamond panel brooch

The rectangular panel of scrolled openwork design, set throughout with graduated old brilliant-cut diamonds and oval mixed-cut sapphires, length 5.1cm.

£800 - 1,200

244

A diamond bar brooch

The shaped rectangular panel of pierced geometric and scrolling design, centrally millegrain collet set with a brilliant-cut diamond, to borders of smaller brilliant and rose-cut diamonds, two colour precious metal mounted, length 6.5cm.

£500 - 700

245

A diamond bar brooch

The centre and terminals millegrain collet set with old brilliant-cut diamonds, to a tapered bar of graduated similarly cut stones, two colour precious metal mounted, length 6.3cm.

£500 - 700

246

A diamond bracelet

Composed of eight articulated panels, each millegrain set with brilliant-cut diamonds, interspersed with similarly-cut diamond clusters, total diamond weight approximately 3.55ct, length 19.3cm.

£800 - 1,200



227



228



229 (part)



230



231



232



233



234



235 (part)



235 (part)



237



236



238



239



240



241



242 (part)



243



244



245



246



247

A three colour precious metal necklace and bracelet

The tapered necklace of graduated brick links with chevron borders, the three row bracelet of textured box links, both stamped '750', *gross weight approximately 66.3gm.* (2)

£1,200 - 1,400

248

A 9ct three colour gold necklace

The graduated textured panels with applied bead terminals, *length 42cm, weight approximately 56.6gm.*

£500 - 700

249

Les Must de Cartier: A trinity ring

Composed of three interlocking rings, of rose, white and yellow gold, signed, and stamped '750' and '51', with French eagle's head guarantee mark, in original Cartier box, *ring size J-K.*

£250 - 350

250

A 100 Pounds gold coin pendant

The 100 Pounds coin dated 1990, loose mounted in 9ct gold pendant with scrolling surmount, *pendant length 4.6cm, gross weight approximately 37.2gm.*

£800 - 1,000

251

Royal Mint: A sovereign and a half sovereign

Both Proof, dated 1980, in original presentation cases.

£280 - 320

252

A diamond single stone ring

Collet set with an old brilliant-cut diamond, 18ct gold mounted, *diamond weight approximately 1.05ct, ring size K.*

£600 - 800

253

Three diamond set rings

Comprising a diamond three stone ring, the stepped panel setting with graduated brilliant-cut diamonds, stamped '18ct plat', a diamond cluster ring, the central brilliant-cut diamond bordered by crossover shoulders of graduated single-cut diamonds, stamped '18ct plat', and a diamond half hoop ring, the white precious metal scroll engraved hoop set with single-cut diamonds, stamped '18ct PPL D', *ring sizes O, O½ and O respectively.* (3)

£600 - 800

254

A diamond three stone ring

The graduated old-cut diamonds in claw settings, with rose-cut diamond points between, stamped '18ct', *ring size L.*

£500 - 700

255

A 9ct gold engine-turned cigarette case

Initialed and inscribed, *dimensions 80mm x 67mm.*

£500 - 600

256

A pair of Royal presentation cufflinks

Presented by the Duke and Duchess of Windsor, circa 1960, each cufflink composed of oval panel terminals with chain-link connections between, highlighted in blue enamel with the Order of the Garter with initial E, and the conjoined initials 'WE' for Wallace and Edward, with coronet above, *length of each panel 1.85cm.*

£700 - 900

By repute, these cufflinks were presented to James Arthur Masters CVO, by the Duke and Duchess of Windsor in the 1960s, during a visit to Paris. Masters served as Parliamentary Private Secretary to Lord Revelstoke and was later decorated as Commander of the Royal Victorian Order by Elizabeth II, for personal service.

257≈

An 18ct gold fancy-link necklace and a collection of jewellery

The necklace of fancy ropetwist-link design, together with an Austrian four ducats coin pendant, in soldered ropetwist mount, a 9ct gold and ruby brooch, of openwork abstract design, with textured decoration, a fine 18ct gold paper-link chain, a 9ct gold and moonstone pendant, and three brooches, *necklace length 66cm, weight approximately 65.2gm.* (8)

£1,500 - 1,800

258

A 9ct gold mounted evening bag

The 9ct gold mount with a London import mark for 1911, with scrolling pierced and engraved flower design, suspended on a belcher-link chain, with mesh link bag with lining, *mount width 15.3cm.*

£700 - 900

259

Asprey: A 9ct gold mesh-link coin purse

The mount signed 'Asprey London', on flattened belcher-link chain and ring attachment, together with a cultured pearl set tie clip, by Mikimoto, stamped '14k', and a pearl set stickpin, cased, (pearls untested for origin), *purse gross weight approximately 37gm.* (3)

£500 - 600

260

A 9ct gold Parker fountain pen

With engine-turned detail, the barrel initialed, *length 13.4cm.*

£200 - 300



247

248



249



250



252



253 (part)



253 (part)



251 (part)



255



254



256



257 (part)



251 (part)



257 (part)

Watches

261

Jaeger-LeCoultre: An 18ct gold gentleman's wristwatch

The rectangular signed gilt dial with baton markers, to an 18ct gold case numbered '9012', on a later unassociated strap, *dial length 2.2cm*.

£300 - 400

262

Kutchinsky: An 18ct gold gentleman's wristwatch

The circular gilt floral textured dial with black Roman numerals, snap on back, on integral mesh-link strap, clasp stamped '18 750', *width of watch head 3cm, length 19cm*.

£1,000 - 1,500

263

Omega: An 18ct gold gentleman's Seamaster wristwatch

The dial with Arabic numeral quarters and baton markers between, bumper movement, on a later 9ct gold brick-link bracelet, *dial diameter 2.7cm, gross weight approximately 69.3gm*.

£600 - 800

264

Bueche-Girod: A mid-sized wristwatch

The signed square dial with baton quarter markers, the case stamped '18k, 750', on a later woven-link bracelet strap, *dial width 2.4cm*.

£500 - 600

265

Omega: A gentleman's 9ct gold De Ville wristwatch

The circular signed gilt dial with baton markers, to a tapered textured bracelet, with signed case, box and papers, *dial diameter 2.8cm, gross weight approximately 56.8gm*.

£600 - 800



261



262



263



264



265

266

Enicar: A gentleman's stainless steel automatic wristwatch

The circular signed dial with silvered baton markers and date display, to an enamel bezel, the case back signed 'Sherpa 600' and numbered '314962', on a later unassociated leather strap, *dial diameter 3.3cm.*
£400 - 600

267

Two gentleman's wristwatches

The first a stainless steel wristwatch, by Dreyfuss & Co, the rectangular signed silvered dial with black Roman numerals, subsidiary seconds dial and date display, numbered '4457', on a signed black leather strap, with case and papers, the second a stainless steel and gilt automatic wristwatch, by Maurice Lacroix, numbered '58789', on an unassociated leather strap, *first watch case length 3.8cm. (2)*
£500 - 700

268

Tag Heuer: A gentleman's stainless steel chronograph wristwatch

The signed black dial with luminous hands, three subsidiary dials and date aperture, within swivelling bezel, reverse of case signed and numbered 'CG1110-1, AE4000', to track-link bracelet strap, cased, *dial diameter 2.8cm.*
£600 - 800

269

Omega: A gentleman's stainless steel Constellation wristwatch

The circular signed dial with silvered baton markers and date display, the bezel with Roman numerals, to a tapered baton-link bracelet, case numbered '55110883', with signed pouch and papers, *dial diameter 2.4cm.*
£500 - 700

270

Rolex: A gentleman's Air King stainless steel automatic wristwatch

The signed silvered dial with baton hour markers and centre sweep seconds hand, case with screw down back and signed screw down crown, on signed Oyster strap, cased, with second strap included.
£500 - 700

271

Ebel: A gentleman's stainless steel wristwatch

The circular signed white dial with black Roman numerals and date display, to a parcel-gilt case with screwhead detail and parcel-gilt signed bracelet, case numbered '54610618', with signed box and papers, *dial diameter 2.6cm.*
£700 - 900

272

TAG Heuer: A lady's Aquaracer stainless steel wristwatch

The signed mother o' pearl dial with diamond set markers and an Arabic numeral at 12, the bezel set with brilliant-cut diamonds, to a two colour brick-link bracelet, numbered 'WAF1450 RRR0545', in original box, *dial diameter 1.9cm.*
£500 - 600



266



267 (part)



270



269



268



271



272

273

A 9ct gold open face pocket watch

The octagonal mother of pearl dial with gilt Roman numerals, outer minute track and subsidiary seconds dial, to a lever movement and 9ct gold case numbered '547680', the reverse with engraved monogram, together with a fine ropetwist-link chain, *dial length 3.9cm. (2)*

£400 - 600

274

An early Victorian 18ct gold hunter pocket watch

The circular silvered dial with black Roman numerals, subsidiary seconds dial and blued steel spade hands, profusely engraved with foliate scrolls to the centre, to an 18ct gold engine-turned case hallmarked for London 1838, the $\frac{3}{4}$ plate movement signed 'Jas. Corrie, London', case and movement numbered '416', *case diameter 4.5cm, gross weight approximately 85.8gm.*

£400 - 600

275

An 18ct gold open face pocket watch

The circular silvered dial with black Arabic numerals and outer minute track, to keyless wind lever movement and hexagonal case, hallmarked for London 1919, numbered '676', *case width 4.4cm, gross weight approximately 41gm.*

£500 - 700

276

Charles Taylor, Bristol: An 18ct gold open face pocket watch

The textured gilt dial with Roman numerals, and outer foliate detail in three colour gold, the full plate verge fusee movement signed and numbered '20226', the engine-turned case with cast foliate band, hallmarked for London 1818, *diameter 4.6cm, gross weight 85.9gm.*

£700 - 900

277

An 18ct gold open face chonograph pocket watch

The white enamel dial with black Roman numerals, centre seconds hand and outer scale 0-300, to an 18ct gold case hallmarked for London 1882, the $\frac{3}{4}$ plate movement numbered '38444', with base metal winder, *case diameter 5.2cm, gross weight approximately 135.7gm.*

£400 - 600

278

A first half of the 19th century open face pocket watch

The circular white enamel dial with black Arabic numerals, to gold case with reeded rim, stamped '18k' and numbered '1301', the movement signed 'Christ' Rowlands, London' and numbered '3631', (minute hand loose), *case diameter 5.2cm, gross weight approximately 104.5gm.*

£500 - 700

279

For the Chinese Market: A first half of the 19th century open face pocket watch, by Bovet Fleurier

The white enamel dial with black Roman numerals, outer scale 0-60 and centre seconds hand, to a white precious metal case stamped '0,875', the signed skeletonized movement profusely engraved with scrolls, case and dial numbered '1793', with Chinese character signatures, *case diameter 5.6cm.*

£600 - 800

Bovet Fleurier was established in London in 1822 by Édouard Bovet and specialized in producing pocket watches for the Chinese market during the first half of the 19th century. Bovet were renowned for manufacturing highly decorative movements with skeltonized views and dominated the popular southern Chinese market at this time.



273



274



275



276



278



277



279

280

Movado: A lady's diamond set wristwatch

The circular signed dial with gilt baton markers, between fluted shoulders highlighted with brilliant-cut diamonds, on a tapered bracelet stamped '0,750', *dial diameter 1.4cm*.

£250 - 350

281

Omega: A lady's 18ct gold wristwatch

The signed circular dial with baton hour markers, on an integrated shaped track-link bracelet, numbered to case '544477 7049', *dial diameter 1.4cm, strap length 17.5cm, gross weight approximately 31.9gm*.

£500 - 700

282

Bucherer: An 18ct gold lady's wristwatch

The rectangular signed gilt dial with baton markers, case numbered '4 306T' and stamped '18k', to a Byzantine-link bracelet stamped '750', with original guarantee papers dated 1972, *dial length 1.6cm, gross weight approximately 44gm*.

£600 - 800

283^Ω

Omega: An 18ct gold lady's De Ville quartz wristwatch

The signed circular gilt dial with applied gilt baton numerals, within polished bezel and integral polished brick-link bracelet strap, numbered '55196111' to the reverse, with snap on back cover, inside cover numbered '795 1111', *length 15.5cm, total weight 43.7gm*.

£600 - 800

284

Certina: A diamond set 18ct gold lady's wristwatch

The signed circular dial with baton hour markers, the bezel set with pairs of single-cut diamonds, the case numbered to the inside '717 5037 67', the reverse numbered '717 9008 67', to integrated woven-link bracelet strap, in original box, *length approximately 17cm*.

£600 - 800

285

An Art Deco diamond and onyx cocktail watch

The small square dial with black Arabic numerals, set between two rectangular onyx panels, each centred with an old-cut diamond, the rectangular watch head bordered to each side by a line of small single-cut diamonds, the movement signed Longines, outer case stamped 'platine', on later black cordette strap, *watch head length 2.8cm*.

£200 - 300

286

A diamond set cocktail watch

The tonneau-shaped silvered dial with black Arabic numerals and inner minute track, to a shaped rectangular case with flowerhead cluster terminals and pierced shoulders of foliate and ribbon bow design, set throughout with brilliant and single-cut diamonds, case stamped 'All Platinum', to a later black cordette strap with white precious metal fittings, stamped '9ct', in fitted case, *dial length 1.15cm*.

£500 - 700

287

Cartier: A lady's Panthère wristwatch

The circular signed dial with black Roman numerals and secret signature at 7, to a bi-colour metal case with screwhead detail and bi-colour brick-link bracelet, case numbered '1057920', (winder deficient), *case diameter 2.35cm*.

£500 - 600

288

No Lot



280

281

282

283

284

285

286

287



289

Rolex: A gentleman's Cellini wristwatch

The cushion-shaped signed gilt dial with baton markers, to a yellow precious metal case with presentation inscription, numbered '2740003', on an unassociated leather strap, *case length 3.5cm*.

£500 - 600

290

IWC: An 18ct white gold manual wind wristwatch, circa 1960

The brushed silvered dial with applied polished baton hour markers, black pointed baton hands, polished case with back secured by four screws, case numbered '1857110 1819874', to a jewelled Cal.171 manual wind movement, fitted brown leather strap with plated buckle, the case, dial and movement signed, *length 26mm*.

£500 - 600

291

A half hunter pocket watch and fancy-link chain

The white enamel dial with black Roman numerals and subsidiary seconds dial, to $\frac{3}{4}$ plate lever movement, the yellow precious metal case with blue enamel chapter ring, stamped '18k' and numbered '72104', suspending an 18ct gold fancy-link chain with T-bar suspension, *watch case diameter 4.9cm, chain length 23.5cm*. (2)

£400 - 600

292

A 9ct gold Albert chain and a rolled gold pocket watch

The graduated curb-link Albert chain with T-bar suspension and 9ct gold engraved shield fob, the rolled gold open face pocket watch by Waltham, the signed white dial with Roman numerals and subsidiary seconds dial, to signed lever movement, case numbered '928445', *chain length 40cm, gross weight approximately 59gm*. (2)

£600 - 800

293

An 18ct gold half hunter pocket watch

The white enamel dial with black Roman numerals and subsidiary seconds dial, to $\frac{3}{4}$ plate lever movement numbered '8738', the 18ct gold engine-turned case with blue enamel chapter ring and vacant scrolling cartouche to reverse, movement and dial signed 'T F Cooper, London', *case diameter 4.6cm, gross weight approximately 83.5gm*.

£500 - 700

294

An 18ct gold open face chronograph pocket watch

The white enamel dial with black Roman numerals, centre seconds hand and outer scale 0-300, signed 'Centre Seconds, Chronograph', to an 18ct gold case hallmarked for Chester, 1888, with enamel monogram to reverse and presentation inscription to interior, the $\frac{3}{4}$ plate movement, case and dial numbered '52543', *case diameter 5.2cm, gross weight approximately 135gm*.

£800 - 1,200

295

A half hunter pocket watch

The white enamel dial with black Roman numerals and subsidiary seconds dial, to a yellow precious metal half hunter case with blue enamel chapter ring, stamped '18c' with Swiss gold marks, inscribed to cuvette, crested and initialled to case back, *case diameter 4.9cm, gross weight approximately 117.3gm*.

£500 - 700

296

A chronograph hunter pocket watch

The white enamel dial with black Arabic numerals, subsidiary dials at 6 and 12, and outer scale 0-60, to jewelled lever movement and yellow precious metal case, stamped '18c' and numbered '77678', *case diameter 5.2cm, gross weight approximately 109gm*.

£600 - 900

297

A 9ct gold half hunter pocket watch

The white enamel dial with black Roman numerals and subsidiary seconds dial, (subsidiary hand deficient), to a 9ct gold case with blue enamel chapter ring, numbered '618368', cuvette with presentation inscription, *case diameter 4.8cm, gross weight approximately 91.3gm*.

£200 - 300

End of Sale

Next Oxford Jewellery and Watches sale will be held on Tuesday 14 May at 11am.



292



291



293



294



295



296



297

NOTICE TO BIDDERS

This notice is addressed by *Bonhams* to any person who may be interested in a *Lot*, including *Bidders* and potential *Bidders* (including any eventual *Buyer* of the *Lot*). For ease of reference we refer to such persons as “*Bidders*” or “*you*”. Our List of Definitions and Glossary is incorporated into this *Notice to Bidders*. It is at Appendix 3 at the back of the *Catalogue*. Where words and phrases are used in this notice which are in the List of Definitions, they are printed in italics.

IMPORTANT: Additional information applicable to the *Sale* may be set out in the *Catalogue* for the *Sale*, in an insert in the *Catalogue* and/or in a notice displayed at the *Sale* venue and you should read them as well. Announcements affecting the *Sale* may also be given out orally before and during the *Sale* without prior written notice. You should be alert to the possibility of changes and ask in advance of bidding if there have been any.

1. OUR ROLE

In its role as *Auctioneer* of *Lots*, *Bonhams* acts solely for and in the interests of the *Seller*. *Bonhams*' job is to sell the *Lot* at the highest price obtainable at the *Sale* to a *Bidder*. *Bonhams* does not act for *Buyers* or *Bidders* in this role and does not give advice to *Buyers* or *Bidders*. When it or its staff make statements about a *Lot* or, if *Bonhams* provides a *Condition Report* on a *Lot* it is doing that on behalf of the *Seller* of the *Lot*. *Bidders* and *Buyers* who are themselves not expert in the *Lots* are strongly advised to seek and obtain independent advice on the *Lots* and their value before bidding for them. The *Seller* has authorised *Bonhams* to sell the *Lot* as its agent on its behalf and, save where we expressly make it clear to the contrary, *Bonhams* acts only as agent for the *Seller*. Any statement or representation we make in respect of a *Lot* is made on the *Seller's* behalf and, unless *Bonhams* sells a *Lot* as principal, not on our behalf and any *Contract for Sale* is between the *Buyer* and the *Seller* and not with us. If *Bonhams* sells a *Lot* as principal this will either be stated in the *Catalogue* or an announcement to that effect will be made by the *Auctioneer*, or it will be stated in a notice at the *Sale* or an insert in the *Catalogue*.

Bonhams does not owe or undertake or agree to any duty or responsibility to you in contract or tort (whether direct, collateral, express, implied or otherwise). If you successfully bid for a *Lot* and buy it, at that stage *Bonhams* does enter into an agreement with the *Buyer*. The terms of that contract are set out in our *Buyer's Agreement*, which you will find at Appendix 2 at the back of the *Catalogue*. This will govern *Bonhams'* relationship with the *Buyer*.

2. LOTS

Subject to the *Contractual Description* printed in bold letters in the *Entry* about the *Lot* in the *Catalogue* (see paragraph 3 below), *Lots* are sold to the *Buyer* on an “as is” basis, with all faults and imperfections. Illustrations and photographs contained in the *Catalogue* (other than photographs forming part of the *Contractual Description*) or elsewhere of any *Lots* are for identification purposes only. They may not reveal the true condition of the *Lot*. A photograph or illustration may not reflect an accurate reproduction of the colour(s) of the *Lot*. *Lots* are available for inspection prior to the *Sale* and it is for you to satisfy yourself as to each and every aspect of a *Lot*, including its authorship, attribution, condition, provenance, history, background, authenticity, style, period, age, suitability, quality, roadworthiness (if relevant), origin, value and estimated selling price (including the *Hammer Price*). It is your responsibility to examine any *Lot* in which you are interested. It should be remembered that the actual condition of a *Lot* may not be as good as that indicated by its outward appearance. In particular, parts may have been replaced or renewed and *Lots* may not be authentic or of satisfactory quality; the inside of a *Lot* may not be visible and may not be original or may be damaged, as for example where it is covered by upholstery or material. Given the age of many *Lots* they may have been damaged and/or repaired and you should not assume that a *Lot* is in good condition. Electronic or mechanical parts may not operate or may not comply with current statutory requirements. You should not assume that electrical items designed to operate on mains electricity will be suitable for connection to the mains electricity supply and you should obtain a report from

a qualified electrician on their status before doing so. Such items which are unsuitable for connection are sold as items of interest for display purposes only. If you yourself do not have expertise regarding a *Lot*, you should consult someone who does to advise you. We can assist in arranging facilities for you to carry out or have carried out more detailed inspections and tests. Please ask our staff for details.

Any person who damages a *Lot* will be held liable for the loss caused.

3. DESCRIPTIONS OF LOTS AND ESTIMATES

Contractual Description of a Lot

The *Catalogue* contains an *Entry* about each *Lot*. Each *Lot* is sold by its respective *Seller* to the *Buyer* of the *Lot* as corresponding only with that part of the *Entry* which is printed in bold letters and (except for the colour, which may be inaccurately reproduced) with any photograph of the *Lot* in the *Catalogue*. The remainder of the *Entry*, which is not printed in bold letters, represents *Bonhams'* opinion (given on behalf of the *Seller*) about the *Lot* only and is not part of the *Contractual Description* in accordance with which the *Lot* is sold by the *Seller*.

Estimates

In most cases, an *Estimate* is printed beside the *Entry*. *Estimates* are only an expression of *Bonhams'* opinion made on behalf of the *Seller* of the range where *Bonhams* thinks the *Hammer Price* for the *Lot* is likely to fall; it is not an *Estimate* of value. It does not take into account any VAT or *Buyer's Premium* payable. *Lots* can in fact sell for *Hammer Prices* below and above the *Estimate*. Any *Estimate* should not be relied on as an indication of the actual selling price or value of a *Lot*. *Estimates* are in the currency of the *Sale*.

Condition Reports

In respect of most *Lots*, you may ask for a *Condition Report* on its physical condition from *Bonhams*. If you do so, this will be provided by *Bonhams* on behalf of the *Seller* free of charge. *Bonhams* is not entering into a contract with you in respect of the *Condition Report* and accordingly does not assume responsibility to you in respect of it. Nor does the *Seller* owe or agree to owe you as a *Bidder* any obligation or duty in respect of this free report about a *Lot*, which is available for your own inspection or for inspection by an expert instructed by you. However, any written *Description* of the physical condition of the *Lot* contained in a *Condition Report* will form part of the *Contractual Description* of the *Lot* under which it is sold to any *Buyer*.

The Seller's responsibility to you

The *Seller* does not make or agree to make any representation of fact or contractual promise, *Guarantee* or warranty and undertakes no obligation or duty, whether in contract or in tort (other than to the eventual *Buyer* as set out above), in respect of the accuracy or completeness of any statement or representation made by him or on his behalf, which is in any way descriptive of any *Lot* or as to the anticipated or likely selling price of any *Lot*. Other than as set out above, no statement or representation in any way descriptive of a *Lot* or any *Estimate* is incorporated into any *Contract for Sale* between a *Seller* and a *Buyer*.

Bonhams' responsibility to you

You have the opportunity of examining the *Lot* if you want to and the *Contract for Sale* for a *Lot* is with the *Seller* and not with *Bonhams*; *Bonhams* acts as the *Seller's* agent only (unless *Bonhams* sells the *Lot* as principal).

Bonhams undertakes no obligation to you to examine, investigate or carry out any tests, either in sufficient depth or at all, on each *Lot* to establish the accuracy or otherwise of any *Descriptions* or opinions given by *Bonhams*, or by any person on *Bonhams'* behalf, whether in the *Catalogue* or elsewhere.

You should not suppose that such examinations, investigations or tests have occurred.

Bonhams does not make or agree to make any representation of fact, and undertakes no obligation or duty (whether in contract or tort) in respect of the accuracy or completeness of any statement or representation made by *Bonhams* or on

Bonhams' behalf which is in any way descriptive of any *Lot* or as to the anticipated or likely selling price of any *Lot*. No statement or representation by *Bonhams* or on its behalf in any way descriptive of any *Lot* or any *Estimate* is incorporated into our *Buyer's Agreement*.

Alterations

Descriptions and *Estimates* may be amended at *Bonhams'* discretion from time to time by notice given orally or in writing before or during a *Sale*.

THE *LOT* IS AVAILABLE FOR INSPECTION AND YOU MUST FORM YOUR OWN OPINION IN RELATION TO IT. YOU ARE STRONGLY ADVISED TO EXAMINE ANY *LOT* OR HAVE IT EXAMINED ON YOUR BEHALF BEFORE THE *SALE*.

4. CONDUCT OF THE SALE

Our *Sales* are public auctions which persons may attend and you should take the opportunity to do so. We do reserve the right at our sole discretion to refuse admission to our premises or to any *Sale* without stating a reason. We have complete discretion as to whether the *Sale* proceeds, whether any *Lot* is included in the *Sale*, the manner in which the *Sale* is conducted and we may offer *Lots* for *Sale* in any order we choose notwithstanding the numbers given to *Lots* in the *Catalogue*. You should therefore check the date and starting time of the *Sale*, whether there have been any withdrawals or late entries. Remember that withdrawals and late entries may affect the time at which a *Lot* you are interested in is put up for *Sale*. We have complete discretion to refuse any bid, to nominate any bidding increment we consider appropriate, to divide any *Lot*, to combine two or more *Lots*, to withdraw any *Lot* from a *Sale* and, before the *Sale* has been closed, to put up any *Lot* for auction again. Auction speeds can exceed 100 *Lots* to the hour and bidding increments are generally about 10%. However these do vary from *Sale* to *Sale* and from *Auctioneer* to *Auctioneer*. Please check with the department organising the *Sale* for advice on this. Where a *Reserve* has been applied to a *Lot*, the *Auctioneer* may, in his absolute discretion, place bids (up to an amount not equalling or exceeding such *Reserve*) on behalf of the *Seller*. We are not responsible to you in respect of the presence or absence of any *Reserve* in respect of any *Lot*. If there is a *Reserve* it will normally be no higher than the lower figure for any *Estimate* in the *Catalogue*, assuming that the currency of the *Reserve* has not fluctuated adversely against the currency of the *Estimate*. The *Buyer* will be the *Bidder* who makes the highest bid acceptable to the *Auctioneer* for any *Lot* (subject to any applicable *Reserve*) to whom the *Lot* is knocked down by the *Auctioneer* at the fall of the *Auctioneer's* hammer. Any dispute as to the highest acceptable bid will be settled by the *Auctioneer* in his absolute discretion. All bids tendered will relate to the actual *Lot* number announced by the *Auctioneer*. An electronic currency converter may be used at the *Sale*. This equipment is provided as a general guide as to the equivalent amount in certain currencies of a given bid. We do not accept any responsibility for any errors which may occur in the use of the currency converter. We may use video cameras to record the *Sale* and may record telephone calls for reasons of security and to assist in solving any disputes which may arise in relation to bids made at the *Sale*. At some *Sales*, for example, jewellery *Sales*, we may use screens on which images of the *Lots* will be projected. This service is provided to assist viewing at the *Sale*. The image on the screen should be treated as an indication only of the current *Lot*. It should be noted that all bids tendered will relate to the actual *Lot* number announced by the *Auctioneer*. We do not accept any responsibility for any errors which may occur in the use of the screen.

5. BIDDING

We do not accept bids from any person who has not completed and delivered to us one of our *Bidding Forms*, either our *Bidder Registration Form*, *Absentee Bidding Form* or *Telephone Bidding Form*. You will be asked for proof of identity, residence and references, which, when asked for, you must supply if your bids are to be accepted by us. Please bring your passport, driving licence (or similar photographic proof of identity) and proof of address. We may request a deposit from you before allowing you to bid. We may refuse entry to a *Sale* to any person even if that person has completed a *Bidding Form*.

Bidding in person

You should come to our *Bidder* registration desk at the *Sale* venue and fill out a *Bidder* Registration Form on (or, if possible, before) the day of the *Sale*. The bidding number system is sometimes referred to as "paddle bidding". You will be issued with a large card (a "paddle") with a printed number on it. This will be attributed to you for the purposes of the *Sale*. Should you be a successful *Bidder* you will need to ensure that your number can be clearly seen by the *Auctioneer* and that it is your number which is identified as the *Buyer's*. You should not let anyone else use your paddle as all *Lots* will be invoiced to the name and address given on your *Bidder* Registration Form. Once an invoice is issued it will not be changed. If there is any doubt as to the *Hammer Price* of, or whether you are the successful *Bidder* of, a particular *Lot*, you must draw this to the attention of the *Auctioneer* before the next *Lot* is offered for *Sale*. At the end of the *Sale*, or when you have finished bidding please return your paddle to the *Bidder* registration desk.

Bidding by telephone (only available on lots with a low estimate greater than £400)

If you wish to bid at the *Sale* by telephone, please complete a Telephone *Bidding Form*, which is available from our offices or in the *Catalogue*. Please then return it to the office responsible for the *Sale* at least 24 hours in advance of the *Sale*. It is your responsibility to check with our Bids Office that your bid has been received. Telephone calls will be recorded. The telephone bidding facility is a discretionary service and may not be available in relation to all *Lots*. We will not be responsible for bidding on your behalf if you are unavailable at the time of the *Sale* or if the telephone connection is interrupted during bidding. Please contact us for further details.

Bidding by post or fax

Absentee *Bidding Forms* can be found in the back of this *Catalogue* and should be completed and sent to the office responsible for the *Sale*. It is in your interests to return your form as soon as possible, as if two or more *Bidders* submit identical bids for a *Lot*, the first bid received takes preference. In any event, all bids should be received at least 24 hours before the start of the *Sale*. Please check your Absentee *Bidding Form* carefully before returning it to us, fully completed and signed by you. It is your responsibility to check with our Bids Office that your bid has been received. This additional service is complimentary and is confidential. Such bids are made at your own risk and we cannot accept liability for our failure to receive and/or place any such bids. All bids made on your behalf will be made at the lowest level possible subject to *Reserves* and other bids made for the *Lot*. Where appropriate your bids will be rounded down to the nearest amount consistent with the *Auctioneer's* bidding increments. New *Bidders* must also provide proof of identity and address when submitting bids. Failure to do this will result in your bid not being placed.

Bidding via the internet

Please visit our *Website* at <http://www.bonhams.com> for details of how to bid via the internet.

Bidding through an agent

Bids will be accepted as placed on behalf of the person named as the principal on the *Bidding Form* although we may refuse to accept bids from an agent on behalf of a principal and will require written confirmation from the principal confirming the agent's authority to bid. Nevertheless, as the *Bidding Form* explains, any person placing a bid as agent on behalf of another (whether or not he has disclosed that fact or the identity of his principal) will be jointly and severally liable with the principal to the *Seller* and to *Bonhams* under any contract resulting from the acceptance of a bid. Subject to the above, please let us know if you are acting on behalf of another person when bidding for *Lots* at the *Sale*.

Equally, please let us know if you intend to nominate another person to bid on your behalf at the *Sale* unless this is to be carried out by us pursuant to a Telephone or Absentee *Bidding Form* that you have completed. If we do not approve the agency arrangements in writing before the *Sale*, we are entitled to assume that the person bidding at the *Sale* is bidding on his own behalf. Accordingly, the person bidding at the *Sale* will be the *Buyer* and will be liable to pay the *Hammer Price* and *Buyer's Premium* and associated charges. If we approve the

identity of your client in advance, we will be in a position to address the invoice to your principal rather than you. We will require proof of the agent's client's identity and residence in advance of any bids made by the agent on his behalf. Please refer to our *Conditions of Business* and contact our Customer Services Department for further details.

6. CONTRACTS BETWEEN THE BUYER AND SELLER AND THE BUYER AND BONHAMS

On the *Lot* being knocked down to the *Buyer*, a *Contract for Sale* of the *Lot* will be entered into between the *Seller* and the *Buyer* on the terms of the *Contract for Sale* set out in Appendix 1 at the back of the *Catalogue*. You will be liable to pay the *Purchase Price*, which is the *Hammer Price* plus any applicable *VAT*. At the same time, a separate contract is also entered into between us as *Auctioneers* and the *Buyer*. This is our *Buyer's Agreement*, the terms of which are set out in Appendix 2 at the back of the *Catalogue*. Please read the terms of the *Contract for Sale* and our *Buyer's Agreement* contained in the *Catalogue* in case you are the successful *Bidder*. We may change the terms of either or both of these agreements in advance of their being entered into, by setting out different terms in the *Catalogue* and/or by placing an insert in the *Catalogue* and/or by notices at the *Sale* venue and/or by oral announcements before and during the *Sale*. You should be alert to this possibility of changes and ask if there have been any.

7. BUYER'S PREMIUM AND OTHER CHARGES PAYABLE BY THE BUYER

Under the *Buyer's Agreement*, a premium (the *Buyer's Premium*) is payable to us by the *Buyer* in accordance with the terms of the *Buyer's Agreement* and at rates set out below, calculated by reference to the *Hammer Price* and payable in addition to it. Storage charges and *Expenses* are also payable by the *Buyer* as set out in the *Buyer's Agreement*. All the sums payable to us by the *Buyer* are subject to *VAT*. For this *Sale* the following rates of *Buyer's Premium* will be payable by *Buyers* of *Lots*:

25% up to £25,000 of the *Hammer Price*
20% from £25,001 of the *Hammer Price*
12% from £500,001 of the *Hammer Price*

On certain *Lots*, which will be marked "AR" in the *Catalogue* and which are sold for a *Hammer Price* of €1,000 or greater (converted into the currency of the *Sale* using the European Central Bank Reference rate prevailing on the date of the *Sale*), the *Additional Premium* will be payable to us by the *Buyer* to cover our *Expenses* relating to the payment of royalties under the Artists Resale Right Regulations 2006. The *Additional Premium* will be a percentage of the amount of the *Hammer Price* calculated in accordance with the table below, and shall not exceed €12,500 (converted into the currency of the *Sale* using the European Central Bank Reference rate prevailing on the date of the *Sale*).

<i>Hammer Price</i>	Percentage amount
From €0 to €50,000	4%
From €50,000.01 to €200,000	3%
From €200,000.01 to €350,000	1%
From €350,000.01 to €500,000	0.5%
Exceeding €500,000	0.25%

8. VAT

The prevailing rate of *VAT* at the time of going to press is 20%, but this is subject to government change and the rate payable will be the rate in force on the date of the *Sale*.

The following symbols are used to denote that *VAT* is due on the *Hammer Price* and *Buyer's Premium*:

- † *VAT* at the prevailing rate on *Hammer Price* and *Buyer's Premium*
- Ω *VAT* on imported items at the prevailing rate on *Hammer Price* and *Buyer's Premium*
- * *VAT* on imported items at a preferential rate of 5% on *Hammer Price* and the prevailing rate on *Buyer's Premium*

- G Gold bullion exempt from *VAT* on the *Hammer Price* and subject to *VAT* at the prevailing rate on the *Buyer's Premium*
- Zero rated for *VAT*, no *VAT* will be added to the *Hammer Price* or the *Buyer's Premium*
- α *Buyers* from within the EU: *VAT* is payable at the prevailing rate on just the *Buyer's Premium* (NOT the *Hammer Price*). *Buyers* from outside the EU: *VAT* is payable at the prevailing rate on both *Hammer Price* and *Buyer's Premium*. If a *Buyer*, having registered under a non-EU address, decides that the item is not to be exported from the EU, then he should advise *Bonhams* immediately.

In all other instances no *VAT* will be charged on the *Hammer Price*, but *VAT* at the prevailing rate will be added to *Buyer's Premium* which will be invoiced on a *VAT* inclusive basis.

9. PAYMENT

It is of critical importance that you ensure that you have readily available funds to pay the *Purchase Price* and the *Buyer's Premium* (plus *VAT* and any other charges and *Expenses* to us) in full before making a bid for the *Lot*. If you are a successful *Bidder*, payment will be due to us by 4.30 pm on the second working day after the *Sale* so that all sums are cleared by the eighth working day after the *Sale*. Unless agreed by us in advance payments made by anyone other than the registered *Buyer* will not be accepted. Payment will have to be by one of the following methods (all cheques should be made payable to Bonhams 1793 Limited). *Bonhams* reserves the right to vary the terms of payment at any time.

Sterling personal cheque drawn on a UK branch of a bank or building society: all cheques must be cleared before you can collect your purchases;

Bankers draft/building society cheque: if you can provide suitable proof of identity and we are satisfied as to the genuineness of the draft or cheque, we will allow you to collect your purchases immediately;

Cash: you may pay for *Lots* purchased by you at this *Sale* with notes, coins or travellers cheques in the currency in which the *Sale* is conducted (but not any other currency) provided that the total amount payable by you in respect of all *Lots* purchased by you at the *Sale* does not exceed £3,000, or the equivalent in the currency in which the *Sale* is conducted, at the time when payment is made. If the amount payable by you for *Lots* exceeds that sum, the balance must be paid otherwise than in coins, notes or travellers cheques;

Sterling travellers cheques: you may pay for *Lots* purchased by you at this *Sale* with travellers cheques, provided the total amount payable by you in respect of all *Lots* purchased by you at the *Sale* does not exceed £3,000. We will need to see your passport if you wish to pay using travellers cheques;

Bank transfer: you may electronically transfer funds to our *Trust Account*. If you do so, please quote your paddle number and invoice number as the reference. Our *Trust Account* details are as follows:

Bank: National Westminster Bank Plc
Address: PO Box 4RY
250 Regent Street
London W1A 4RY
Account Name: Bonhams 1793 Limited Trust Account
Account Number: 25563009
Sort Code: 56-00-27
IBAN Number: GB 33 NWBK 560027 25563009

If paying by bank transfer, the amount received after the deduction of any bank fees and/or conversion of the currency of payment to pounds sterling must not be less than the sterling amount payable, as set out on the invoice.

Debit cards: there is no additional charge for purchases made with personal debit cards, issued by a UK bank. Debit cards issued by an overseas bank, deferred and company debit cards and all credit cards will be subject to a 3% surcharge;

Union Pay cards: these are now accepted at our Knightsbridge and New Bond Street offices, when presented in person by the card holder. These cards are subject to a 3% surcharge.

Credit cards: Visa and Mastercard only. Please note there is a 3% surcharge on the total invoice value when payments are made using credit cards. It may be advisable to notify your card provider of your intended purchase in advance to reduce delays caused by us having to seek authority when you come to pay. If you have any questions with regard to payment, please contact our Customer Services Department.

10. COLLECTION AND STORAGE

The *Buyer* of a *Lot* will not be allowed to collect it until payment in full and in cleared funds has been made (unless we have made a special arrangement with the *Buyer*). For collection and removal of purchased *Lots*, please refer to *Sale Information* at the front of the *Catalogue*. Our offices are open 9.00am – 5pm Monday to Friday. Details relating to the collection of a *Lot*, the storage of a *Lot* and our *Storage Contractor* after the *Sale* are set out in the *Catalogue*.

11. SHIPPING

Please refer all enquiries to our shipping department on:
Tel: +44 (0)20 8963 2850/2852 Fax: +44 (0)20 8963 2805
Email: shipping@bonhams.com

12. EXPORT/TRADE RESTRICTIONS

It is your sole responsibility to comply with all export and import regulations relating to your purchases and also to obtain any relevant export and/or import licence(s). Export licences are issued by Arts Council England and application forms can be obtained from its Export Licensing Unit. The detailed provisions of the export licencing arrangements can be found on the ACE website <http://www.artscouncil.org.uk/what-we-do/supporting-museums/cultural-property/export-controls/export-licencing/> or by phoning ACE on +44 (0)20 7973 5188. The need for import licences varies from country to country and you should acquaint yourself with all relevant local requirements and provisions. The refusal of any import or export licence(s) or any delay in obtaining such licence(s) shall not permit the rescission of any *Sale* nor allow any delay in making full payment for the *Lot*. Generally, please contact our shipping department before the *Sale* if you require assistance in relation to export regulations.

13. CITES REGULATIONS

Please be aware that all *Lots* marked with the symbol Y are subject to CITES regulations when exporting these items outside the EU. These regulations may be found at <http://www.defra.gov.uk/ahvla-en/imports-exports/cites/> or may be requested from:

Animal Health and Veterinary Laboratories Agency (AHVLA)
Wildlife Licencing
Floor 1, Zone 17, Temple Quay House
2 The Square, Temple Quay
BRISTOL BS1 6EB
Tel: +44 (0) 117 372 8774

14. THE SELLERS AND/OR BONHAMS' LIABILITY

Other than any liability of the *Seller* to the *Buyer* of a *Lot* under the *Contract for Sale*, neither we nor the *Seller* are liable (whether in negligence or otherwise) for any error or misdescription or omission in any *Description* of a *Lot* or any *Estimate* in respect of it, whether contained in the *Catalogue* or otherwise, whether given orally or in writing and whether given before or during the *Sale*. Neither we nor the *Seller* will be liable for any loss of *Business*, profits, revenue or income, or for loss of reputation, or for disruption to *Business* or wasted time on the part of management or staff, or for indirect losses or consequential damages of any kind, irrespective in any case of the nature, volume or source of the loss or damage alleged to be suffered, and irrespective of whether the said loss or damage is caused by or claimed in respect of any negligence, other tort, breach of contract (if any) or statutory duty, restitutionary claim or otherwise. In any circumstances where we and/or the *Seller* are liable in relation to any *Lot* or

any *Description* or *Estimate* made of any *Lot*, or the conduct of any *Sale* in relation to any *Lot*, whether in damages, for an indemnity or contribution, or for a restitutionary remedy or otherwise, our and/or the *Seller's* liability (combined, if both we and the *Seller* are liable) will be limited to payment of a sum which will not exceed by way of maximum the amount of the *Purchase Price* of the *Lot* irrespective in any case of the nature, volume or source of any loss or damage alleged to be suffered or sum claimed as due, and irrespective of whether the liability arises from any negligence, other tort, breach of contract (if any) or statutory duty or otherwise. Nothing set out above will be construed as excluding or restricting (whether directly or indirectly) our liability or excluding or restricting any person's rights or remedies in respect of (i) fraud, or (ii) death or personal injury caused by our negligence (or by the negligence of any person under our control or for whom we are legally responsible), or (iii) acts or omissions for which we are liable under the Occupiers Liability Act 1957, or (iv) any other liability to the extent the same may not be excluded or restricted as a matter of law or (v) our undertakings under paragraphs 9 (in relation to specialist *Stamp* or *Book Sales* only) and 10 of the *Buyer's Agreement*. The same applies in respect of the *Seller*, as if references to us in this paragraph were substituted with references to the *Seller*.

15. BOOKS

As stated above, all *Lots* are sold on an "as is" basis, subject to all faults, imperfections and errors of *Description* save as set out below. However, you will be entitled to reject a *Book* in the circumstances set out in paragraph 10 of the *Buyers Agreement*. Please note that *Lots* comprising printed *Books*, unframed maps and bound manuscripts are not liable to VAT on the *Buyer's Premium*.

16. CLOCKS AND WATCHES

All *Lots* are sold "as is", and the absence of any reference to the condition of a clock or watch does not imply that the *Lot* is in good condition and without defects, repairs or restorations. Most clocks and watches have been repaired in the course of their normal lifetime and may now incorporate parts not original to them. Furthermore, *Bonhams* makes no representation or warranty that any clock or watch is in working order. As clocks and watches often contain fine and complex mechanisms, *Bidders* should be aware that a general service, change of battery or further repair work, for which the *Buyer* is solely responsible, may be necessary. *Bidders* should be aware that the importation of watches such as Rolex, Frank Muller and Corum into the United States is highly restricted. These watches may not be shipped to the USA and can only be imported personally.

17. FIREARMS – PROOF, CONDITION AND CERTIFICATION

Proof of Firearms

The term "proof exemption" indicates that a firearm has been examined at a Proof House, but not proved, as either (a) it was deemed of interest and not intended for use, or (b) ammunition was not available. In either case, the firearm must be regarded as unsafe to fire unless subsequently proved. Firearms proved for Black Powder should not be used with smokeless ammunition.

The term "Certificate of Unprovability" indicates that a firearm has been examined at a Proof House and is deemed both unsuitable for proof and use. Reproof is required before any such firearm is to be used.

Guns Sold as Parts

Barrels of guns sold as parts will only be made available for sleeving and measurements once rendered unserviceable according to the Gun Barrel Proof Act of 1968 to 1978 and the Rules of Proof.

Condition of Firearms

Comment in this *Catalogue* is restricted, in general, to exceptional condition and to those defects that might affect the immediate safety of a firearm in normal use. An intending *Bidder* unable to make technical examinations and assessments is recommended to seek advice from a gunmaker or from a

modern firearms specialist. All prospective *Bidders* are advised to consult the "° of bore and wall-thickness measurements posted in the saleroom and available from the department. *Bidders* should note that guns are stripped only where there is a strong indication of a mechanical malfunction. Stripping is not, otherwise, undertaken. Guns intended for use should be stripped and cleaned beforehand. Hammer guns should have their rebound mechanisms checked before use. The safety mechanisms of all guns must be tested before use. All measurements are approximate.

Original Gun Specifications Derived from Gunmakers

The Sporting Gun Department endeavours to confirm a gun's original specification and date of manufacture with makers who hold their original records.

Licensing Requirements Firearms Act 1968 as amended

Bonhams is constantly reviewing its procedures and would remind you that, in the case of firearms or shotguns subject to certification, to conform with current legislation, *Bonhams* is required to see, as appropriate, your original registered firearms dealer's certificate / shot gun certificate / firearm certificate / museum firearms licence / Section 5 authority or import licence (or details of any exemption from which you may benefit, for instance Crown servant status) for the firearm(s) you have purchased prior to taking full payment of the amount shown on your invoice. Should you not already be in possession of such an authority or exemption, you are required to initially pay a deposit of 95% of the total invoice with the balance of 5% payable on presentation of your valid certificate or licence showing your authority to hold the firearm(s) concerned.

Please be advised that if a successful *Bidder* is then unable to produce the correct paperwork, the *Lot(s)* will be reoffered by *Bonhams* in the next appropriate *Sale*, on standard terms for *Sellers*, and you will be responsible for any loss incurred by *Bonhams* on the original *Sale* to you.

In the case of RFD certificates and Section 5 authorities, we wish to keep an up-to-date copy on file. Please supply us with a Fax or photocopy. It would be helpful if you could send us an updated copy whenever your certificate or authority is renewed or changed.

Lots marked 'S1' and bearing red labels are Section 1 firearms and require a valid British Firearms certificate, RFD Licence or import licence.

Lots marked 'S2' and bearing blue labels are Section 2 firearms and require a valid British Shotgun certificate, RFD licence or import licence.

Lots marked 'S5' and bearing specially marked red labels are Section 5 prohibited firearms and require a valid Section 5 Authority or import licence.

Lots marked with a 'S58' and bearing yellow labels are for obsolete calibres and no licence is required unless ammunition is held.

Unmarked *Lots* require no licence.

Please do not hesitate to contact the Modern Sporting Gun Department should you have any queries.

Taxidermy and Related Items

As a *Seller* of these articles, *Bonhams* undertakes to comply fully with Cites and DEFRA regulations. *Buyers* are advised to inform themselves of all such regulations and should expect the exportation of items to take some time to arrange.

18. FURNITURE

Upholstered Furniture

Whilst we take every care in cataloguing furniture which has been upholstered we offer no *Guarantee* as to the originality of the wood covered by fabric or upholstery.

19. JEWELLERY

~ Ruby and Jadeite

Ruby and jadeite gemstones of Burmese (Myanmar) origin may not be imported into the US. Rubies and jadeite of non-Burmese origin require certification before import into the US and it is the *Buyer's* responsibility to obtain all relevant and required export/import licences, certificates and documentation before shipping. Failure by the *Buyer* to successfully import goods into the US does not constitute grounds for non payment or cancellation of *Sale*. *Bonhams* will not be responsible for any additional costs in this regard howsoever incurred.

Gemstones

Historically many gemstones have been subjected to a variety of treatments to enhance their appearance. Sapphires and rubies are routinely heat treated to improve their colour and clarity, similarly emeralds are frequently treated with oils or resin for the same purpose. Other treatments such as staining, irradiation or coating may have been used on other gemstones. These treatments may be permanent, whilst others may need special care or re-treatment over the years to retain their appearance. *Bidders* should be aware that *Estimates* assume that gemstones may have been subjected to such treatments. A number of laboratories issue certificates that give more detailed *Descriptions* of gemstones. However there may not be consensus between different laboratories on the degrees, or types of treatment for any particular gemstone. In the event that *Bonhams* has been given or has obtained certificates for any *Lot* in the *Sale* these certificates will be disclosed in the *Catalogue*. Although, as a matter of policy, *Bonhams* endeavours to provide certificates from recognised laboratories for certain gemstones, it is not feasible to obtain certificates for each *Lot*. In the event that no certificate is published in the *Catalogue*, *Bidders* should assume that the gemstones may have been treated. Neither *Bonhams* nor the *Seller* accepts any liability for contradictions or differing certificates obtained by *Buyers* on any *Lots* subsequent to the *Sale*.

Estimated Weights

If a stone(s) weight appears within the body of the *Description* in capital letters, the stone(s) has been unmounted and weighed by *Bonhams*. If the weight of the stone(s) is stated to be approximate and does not appear in capital letters, the stone(s) has been assessed by us within its/their settings, and the stated weight is a statement of our opinion only. This information is given as a guide and *Bidders* should satisfy themselves with regard to this information as to its accuracy.

Signatures

1. A diamond brooch, by Kutchinsky

When the maker's name appears in the title, in *Bonhams'* opinion the piece is by that maker.

2. A diamond brooch, signed Kutchinsky

Has a signature that, in *Bonhams'* opinion, is authentic but may contain gemstones that are not original, or the piece may have been altered.

3. A diamond brooch, mounted by Kutchinsky

Has been created by the jeweller, in *Bonhams'* opinion, but using stones or designs supplied by the client.

20. PHOTOGRAPHS

Explanation of Catalogue Terms

- "Bill Brandt": in our opinion a work by the artist.
- "Attributed to Bill Brandt": in our opinion probably a work by the artist, but less certainty to authorship is expressed than in the preceding category.
- "Signed and/or titled and/or dated and/or inscribed": in our opinion the signature and/or title and/or date and/or inscription are in the artist's hand.
- "Signed and/or titled and/or dated and/or inscribed in another hand": in our opinion the signature and/or title and/or date and/or inscription have been added by another hand.

- The date given is that of the image (negative). Where no further date is given, this indicates that the photographic print is vintage (the term "vintage" may also be included in the *Lot Description*). A vintage photograph is one which was made within approximately 5-10 years of the negative. Where a second, later date appears, this refers to the date of printing. Where the exact printing date is not known, but understood to be later, "printed later" will appear in the *Lot Description*.
- Unless otherwise specified, dimensions given are those of the piece of paper on which the image is printed, including any margins. Some photographs may appear in the *Catalogue* without margins illustrated.
- All photographs are sold unframed unless stated in the *Lot Description*.

21. PICTURES

Explanation of Catalogue Terms

The following terms used in the *Catalogue* have the following meanings but are subject to the general provisions relating to *Descriptions* contained in the *Contract for Sale*:

- "Jacopo Bassano": in our opinion a work by the artist. When the artist's forename(s) is not known, a series of asterisks, followed by the surname of the artist, whether preceded by an initial or not, indicates that in our opinion the work is by the artist named;
- "Attributed to Jacopo Bassano": in our opinion probably a work by the artist but less certainty as to authorship is expressed than in the preceding category;
- "Studio/Workshop of Jacopo Bassano": in our opinion a work by an unknown hand in a studio of the artist which may or may not have been executed under the artist's direction;
- "Circle of Jacopo Bassano": in our opinion a work by a hand closely associated with a named artist but not necessarily his pupil;
- "Follower of Jacopo Bassano": in our opinion a work by a painter working in the artist's style, contemporary or nearly contemporary, but not necessarily his pupil;
- "Manner of Jacopo Bassano": in our opinion a work in the style of the artist and of a later date;
- "After Jacopo Bassano": in our opinion, a copy of a known work of the artist;
- "Signed and/or dated and/or inscribed": in our opinion the signature and/or date and/or inscription are from the hand of the artist;
- "Bears a signature and/or date and/or inscription": in our opinion the signature and/or date and/or inscription have been added by another hand.

22. PORCELAIN AND GLASS

Damage and Restoration

For your guidance, in our *Catalogues* we detail, as far as practicable, recorded all significant defects, cracks and restoration. Such practicable *Descriptions* of damage cannot be definitive, and in providing *Condition Reports*, we cannot *Guarantee* that there are no other defects present which have not been mentioned. *Bidders* should satisfy themselves by inspection, as to the condition of each *Lot*. Please see the *Contract for Sale* printed in this *Catalogue*. Because of the difficulty in determining whether an item of glass has been repolished, in our *Catalogues* reference is only made to visible chips and cracks. No mention is made of repolishing, severe or otherwise.

23. VEHICLES

The Veteran Car Club of Great Britain

Dating Plates and Certificates

When mention is made of a Veteran Car Club Dating Plate or Dating Certificate in this *Catalogue*, it should be borne in mind that the Veteran Car Club of Great Britain using the services of Veteran Car Company Ltd, does from time to time, review cars already dated and, in some instances, where fresh evidence becomes available, the review can result in an alteration of date. Whilst the Club and Veteran Car Company Ltd make every effort to ensure accuracy, the date shown on the Dating Plate or Dating Certificate cannot be guaranteed as correct and intending purchasers should make their own enquiries as to the date of the car.

24. WINE

Lots which are lying under Bond and those liable to VAT may not be available for immediate collection.

Examining the wines

It is occasionally possible to provide a pre-*Sale* tasting for larger parcels (as defined below). This is generally limited to more recent and everyday drinking wines. Please contact the department for details.

It is not our policy to inspect every unopened case. In the case of wines older than 20 years the boxes will usually have been opened and levels and appearance noted in the *Catalogue* where necessary. You should make proper allowance for variations in ullage levels and conditions of corks, capsules and labels.

Corks and Ullages

Ullage refers to the space between the base of the cork and the wine. Ullage levels for Bordeaux shaped bottles are only normally noted when below the neck and for Burgundy, Alsace, German and Cognac shaped bottles when greater than 4 centimetres (cm). Acceptable ullage levels increase with age; generally acceptable levels are as follows:

Under 15 years old – into neck or less than 4cm
15 to 30 years old – top shoulder (ts) or up to 5cm
Over 30 years old – high shoulder (hs) or up to 6cm

It should be noted that ullages may change between publication of the *Catalogue* and the *Sale* and that corks may fail as a result of transporting the wine. We will only accept responsibility for *Descriptions* of condition at the time of publication of the *Catalogue* and cannot accept responsibility for any loss resulting from failure of corks either before or after this point.

Options to buy parcels

A parcel is a number of *Lots* of identical size of the same wine, bottle size and *Description*. The *Buyer* of any of these *Lots* has the option to accept some or all of the remaining *Lots* in the parcel at the same price, although such options will be at the *Auctioneer's* sole discretion. Absentee *Bidders* are, therefore, advised to bid on the first *Lot* in a parcel.

Wines in Bond

Wines lying in Bond are marked Δ and VAT is payable by the purchaser, at the standard rate, on the *Hammer Price*, unless the wines are to remain under Bond. *Buyers* requiring their wine to remain in Bond must notify *Bonhams* at the time of the *Sale*. The *Buyer* is then himself responsible for all duty, clearance VAT and other charges that may be payable thereon. All such *Lots* must be transferred or collected within two weeks of the *Sale*.

Buyers outside the UK must be aware that any forwarding agent appointed to export their purchases must have a movement certificate for *Lots* to be released under Bond.

Bottling Details and Case Terms

The following terms used in the *Catalogue* have the following meanings:

CB – Château bottled
DB – Domaine bottled
EstB – Estate bottled
BB – Bordeaux bottled
BE – Belgian bottled
FB – French bottled
GB – German bottled
OB – Oporto bottled
UK – United Kingdom bottled
owc – original wooden case
iwc – individual wooden case
oc – original carton

SYMBOLS

THE FOLLOWING SYMBOLS ARE USED TO DENOTE

- Y Subject to CITES regulations when exporting these items outside the EU, see clause 13.
- W Objects displayed with a w will be located in the Bonhams Warehouse and will only be available for collection from this location.
- ≈ Please note that as a result of recent legislation ruby and jadeite gem stones of Burmese (Myanmar) origin may not be imported into the US. Rubies and jadeite of non-Burmese origin require certification before import into the US.
- Δ Wines lying in Bond.
- AR An *Additional Premium* will be payable to us by the *Buyer* to cover our *Expenses* relating to payment of royalties under the Artists Resale Right Regulations 2006. See clause 7 for details.
- The *Seller* has been guaranteed a minimum price for the *Lot*, either by *Bonhams* or a third party. This may take the form of an irrevocable bid by a third party, who may make a financial gain on a successful *Sale* or a financial loss if unsuccessful.
- ▲ *Bonhams* owns the *Lot* either wholly or partially or may otherwise have an economic interest.
- , †, *, G, Ω, α see clause 8, VAT, for details.

DATA PROTECTION – USE OF YOUR INFORMATION

Where we obtain any personal information about you, we shall only use it in accordance with the terms of our Privacy Policy (subject to any additional specific consent(s) you may have given at the time your information was disclosed). A copy of our Privacy Policy can be found on our *Website* www.bonhams.com or requested by post from Customer Services Department, 101 New Bond Street, London, W1S 1SR or by email from info@bonhams.com

APPENDIX 1

CONTRACT FOR SALE

IMPORTANT: These terms may be changed in advance of the *Sale* of the *Lot* to you, by the setting out of different terms in the *Catalogue* for the *Sale* and/or by placing an insert in the *Catalogue* and/or by notices at the *Sale* venue and/or by oral announcements before and during the *Sale* at the *Sale* venue. You should be alert to this possibility of changes and ask in advance of bidding if there have been any.

Under this contract the *Seller's* liability in respect of the quality of the *Lot*, its fitness for any purpose and its conformity with any *Description* is limited. You are strongly advised to examine the *Lot* for yourself and/or obtain an independent examination of it before you buy it.

1 THE CONTRACT

- 1.1 These terms govern the *Contract for Sale* of the *Lot* by the *Seller* to the *Buyer*.
- 1.2 The Definitions and Glossary contained in Appendix 3 in the *Catalogue* are incorporated into this *Contract for Sale* and a separate copy can also be provided by *Bonhams* on request. Where words and phrases are used which are in the List of Definitions, they are printed in italics.
- 1.3 The *Seller* sells the *Lot* as the principal to the *Contract for Sale*, such contract being made between the *Seller* and you through *Bonhams* which acts in the sole capacity as the *Seller's* agent and not as an additional principal. However, if the *Catalogue* states that *Bonhams* sells the *Lot* as principal, or such a statement is made by an announcement by the *Auctioneer*, or by a notice at the *Sale*, or an insert in the *Catalogue*, then *Bonhams* is the *Seller* for the purposes of this agreement.
- 1.4 The contract is made on the fall of the *Auctioneer's* hammer in respect of the *Lot* when it is knocked down to you.

2 SELLER'S UNDERTAKINGS

- 2.1 The *Seller* undertakes to you that:
- 2.1.1 the *Seller* is the owner of the *Lot* or is duly authorised to sell the *Lot* by the owner;
- 2.1.2 save as disclosed in the *Entry* for the *Lot* in the *Catalogue*, the *Seller* sells the *Lot* with full title guarantee or, where the *Seller* is an executor, trustee, liquidator, receiver or administrator, with whatever right, title or interest he may have in the *Lot*;
- 2.1.3 except where the *Sale* is by an executor, trustee, liquidator, receiver or administrator the *Seller* is both legally entitled to sell the *Lot*, and legally capable of conferring on you quiet possession of the *Lot* and that the *Sale* conforms in every respect with the terms implied by the Sale of Goods Act 1979, Sections 12(1) and 12(2) (see the Definitions and Glossary);
- 2.1.4 the *Seller* has complied with all requirements, legal or otherwise, relating to any export or import of the *Lot*, and all duties and taxes in respect of the export or import of the *Lot* have (unless stated to the contrary in the *Catalogue* or announced by the *Auctioneer*) been paid and, so far as the *Seller* is aware, all third parties have complied with such requirements in the past;
- 2.1.5 subject to any alterations expressly identified as such made by announcement or notice at the *Sale* venue or by the *Notice to Bidders* or by an insert in the *Catalogue*, the *Lot* corresponds with the *Contractual Description* of the *Lot*, being that part of the *Entry* about the *Lot* in the *Catalogue* which is in bold letters and (except for colour) with any photograph of the *Lot* in the *Catalogue* and the contents of any *Condition Report* which has been provided to the *Buyer*.

3 DESCRIPTIONS OF THE LOT

- 3.1 Paragraph 2.1.5 sets out what is the *Contractual Description* of the *Lot*. In particular, the *Lot* is not sold as corresponding with that part of the *Entry* in the *Catalogue* which is not printed in bold letters, which merely sets out (on the *Seller's* behalf) *Bonhams'* opinion about the *Lot* and which is not part of the *Contractual Description* upon which the *Lot* is sold. Any statement or representation other than that part of the *Entry* referred to in paragraph 2.1.5 (together with any express alteration to it as referred to in paragraph 2.1.5), including any *Description* or *Estimate*, whether made orally or in writing, including in the *Catalogue* or on *Bonhams' Website*, or by conduct, or otherwise, and whether by or on behalf of the *Seller* or *Bonhams* and whether made prior to or during the *Sale*, is not part of the *Contractual Description* upon which the *Lot* is sold.
- 3.2 Except as provided in paragraph 2.1.5, the *Seller* does not make or give and does not agree to make or give any contractual promise, undertaking, obligation, guarantee, warranty, or representation of fact, or undertake any duty of care, in relation to any *Description* of the *Lot* or any *Estimate* in relation to it, nor of the accuracy or completeness of any *Description* or *Estimate* which may have been made by or on behalf of the *Seller* including by *Bonhams*. No such *Description* or *Estimate* is incorporated into this *Contract for Sale*.

4 FITNESS FOR PURPOSE AND SATISFACTORY QUALITY

- 4.1 The *Seller* does not make and does not agree to make any contractual promise, undertaking, obligation, guarantee, warranty, or representation of fact in relation to the satisfactory quality of the *Lot* or its fitness for any purpose.

- 4.2 The *Seller* will not be liable for any breach of any undertaking, whether implied by the Sale of Goods Act 1979 or otherwise, as to the satisfactory quality of the *Lot* or its fitness for any purpose.

5 RISK, PROPERTY AND TITLE

- 5.1 Risk in the *Lot* passes to you when it is knocked down to you on the fall of the *Auctioneer's* hammer in respect of the *Lot*. The *Seller* will not be responsible thereafter for the *Lot* prior to you collecting it from *Bonhams* or the *Storage Contractor*, with whom you have separate contract(s) as *Buyer*. You will indemnify the *Seller* and keep the *Seller* fully indemnified from and against all claims, proceedings, costs, expenses and losses arising in respect of any injury, loss and damage caused to the *Lot* after the fall of the *Auctioneer's* hammer until you obtain full title to it.
- 5.2 Title to the *Lot* remains in and is retained by the *Seller* until the *Purchase Price* and all other sums payable by you to *Bonhams* in relation to the *Lot* have been paid in full to, and received in cleared funds by, *Bonhams*.

6 PAYMENT

- 6.1 Your obligation to pay the *Purchase Price* arises when the *Lot* is knocked down to you on the fall of the *Auctioneer's* hammer in respect of the *Lot*.
- 6.2 Time will be of the essence in relation to payment of the *Purchase Price* and all other sums payable by you to *Bonhams*. Unless agreed in writing with you by *Bonhams* on the *Seller's* behalf (in which case you must comply with the terms of that agreement), all such sums must be paid to *Bonhams* by you in the currency in which the *Sale* was conducted by not later than 4.30pm on the second working day following the *Sale* and you must ensure that the funds are cleared by the seventh working day after the *Sale*. Payment must be made to *Bonhams* by one of the methods stated in the *Notice to Bidders* unless otherwise agreed with you in writing by *Bonhams*. If you do not pay any sums due in accordance with this paragraph, the *Seller* will have the rights set out in paragraph 8 below.

7 COLLECTION OF THE LOT

- 7.1 Unless otherwise agreed in writing with you by *Bonhams*, the *Lot* will be released to you or to your order only when *Bonhams* has received cleared funds to the amount of the full *Purchase Price* and all other sums owed by you to the *Seller* and to *Bonhams*.
- 7.2 The *Seller* is entitled to withhold possession from you of any other *Lot* he has sold to you at the same or at any other *Sale* and whether currently in *Bonhams'* possession or not until payment in full and in cleared funds of the *Purchase Price* and all other sums due to the *Seller* and/or *Bonhams* in respect of the *Lot*.
- 7.3 You will collect and remove the *Lot* at your own expense from *Bonhams'* custody and/or control or from the *Storage Contractor's* custody in accordance with *Bonhams'* instructions or requirements.
- 7.4 You will be wholly responsible for packing, handling and transport of the *Lot* on collection and for complying with all import or export regulations in connection with the *Lot*.
- 7.5 You will be wholly responsible for any removal, storage or other charges or *Expenses* incurred by the *Seller* if you do not remove the *Lot* in accordance with this paragraph 7 and will indemnify the *Seller* against all charges, costs, including any legal costs and fees, *Expenses* and losses suffered by the *Seller* by reason of your failure to remove the *Lot* including any charges due under any *Storage Contract*. All such sums due to the *Seller* will be payable on demand.

8	FAILURE TO PAY FOR THE LOT				
8.1	If the <i>Purchase Price</i> for a <i>Lot</i> is not paid to <i>Bonhams</i> in full in accordance with the <i>Contract for Sale</i> the <i>Seller</i> will be entitled, with the prior written agreement of <i>Bonhams</i> but without further notice to you, to exercise one or more of the following rights (whether through <i>Bonhams</i> or otherwise):	9	THE SELLER'S LIABILITY	10.3	If either party to the <i>Contract for Sale</i> is prevented from performing that party's respective obligations under the <i>Contract for Sale</i> by circumstances beyond its reasonable control or if performance of its obligations would by reason of such circumstances give rise to a significantly increased financial cost to it, that party will not, for so long as such circumstances prevail, be required to perform such obligations. This paragraph does not apply to the obligations imposed on you by paragraph 6.
8.1.1	to terminate immediately the <i>Contract for Sale</i> of the <i>Lot</i> for your breach of contract;	9.1	The <i>Seller</i> will not be liable for any injury, loss or damage caused by the <i>Lot</i> after the fall of the <i>Auctioneer's</i> hammer in respect of the <i>Lot</i> .	10.4	Any notice or other communication to be given under the <i>Contract for Sale</i> must be in writing and may be delivered by hand or sent by first class post or air mail or fax transmission, if to the <i>Seller</i> , addressed <i>c/o Bonhams</i> at its address or fax number in the <i>Catalogue</i> (marked for the attention of the Company Secretary), and if to you to the address or fax number of the <i>Buyer</i> given in the <i>Bidding Form</i> (unless notice of any change of address is given in writing). It is the responsibility of the sender of the notice or communication to ensure that it is received in a legible form within any applicable time period.
8.1.2	to resell the <i>Lot</i> by auction, private treaty or any other means on giving seven days' written notice to you of the intention to resell;	9.2	Subject to paragraph 9.3 below, except for breach of the express undertaking provided in paragraph 2.1.5, the <i>Seller</i> will not be liable for any breach of any term that the <i>Lot</i> will correspond with any <i>Description</i> applied to it by or on behalf of the <i>Seller</i> , whether implied by the Sale of Goods Act 1979 or otherwise.	10.5	If any term or any part of any term of the <i>Contract for Sale</i> is held to be unenforceable or invalid, such unenforceability or invalidity will not affect the enforceability and validity of the remaining terms or the remainder of the relevant term.
8.1.3	to retain possession of the <i>Lot</i> ;	9.3	Unless the <i>Seller</i> sells the <i>Lot</i> in the course of a <i>Business</i> and the <i>Buyer</i> buys it as a <i>Consumer</i> ,	10.6	References in the <i>Contract for Sale</i> to <i>Bonhams</i> will, where appropriate, include reference to <i>Bonhams'</i> officers, employees and agents.
8.1.4	to remove and store the <i>Lot</i> at your expense;	9.3.1	the <i>Seller</i> will not be liable (whether in negligence, other tort, breach of contract or statutory duty or in restitution or under the Misrepresentation Act 1967, or in any other way) for any lack of conformity with, or inaccuracy, error, misdescription or omission in any <i>Description</i> of the <i>Lot</i> or any <i>Entry</i> or <i>Estimate</i> in relation to the <i>Lot</i> made by or on behalf of the <i>Seller</i> (whether made in writing, including in the <i>Catalogue</i> , or on the <i>Website</i> , or orally, or by conduct or otherwise) and whether made before or after this agreement or prior to or during the <i>Sale</i> ;	10.7	The headings used in the <i>Contract for Sale</i> are for convenience only and will not affect its interpretation.
8.1.5	to take legal proceedings against you for any sum due under the <i>Contract for Sale</i> and/or damages for breach of contract;	9.3.2	the <i>Seller</i> will not be liable for any loss of <i>Business</i> , <i>Business</i> profits or revenue or income or for loss of reputation or for disruption to <i>Business</i> or wasted time on the part of the <i>Buyer</i> or of the <i>Buyer's</i> management or staff or, for any indirect losses or consequential damages of any kind, irrespective in any case of the nature, volume or source of the loss or damage alleged to be suffered, and irrespective of whether the said loss or damage is caused by or claimed in respect of any negligence, other tort, breach of contract, statutory duty, restitutionary claim or otherwise;	10.8	In the <i>Contract for Sale</i> "including" means "including, without limitation".
8.1.6	to be paid interest on any monies due (after as well as before judgement or order) at the annual rate of 5% per annum above the base rate of National Westminster Bank Plc from time to time to be calculated on a daily basis from the date upon which such monies become payable until the date of actual payment;	9.3.3	in any circumstances where the <i>Seller</i> is liable to you in respect of the <i>Lot</i> , or any act, omission, statement, or representation in respect of it, or this agreement or its performance, and whether in damages, for an indemnity or contribution or for a restitutionary remedy or in any way whatsoever, the <i>Seller's</i> liability will be limited to payment of a sum which will not exceed by way of maximum the amount of the <i>Purchase Price</i> of the <i>Lot</i> irrespective in any case of the nature, volume or source of any loss or damage alleged to be suffered or sum claimed as due, and irrespective of whether the liability arises from any negligence, other tort, breach of contract, statutory duty, bailee's duty, restitutionary claim or otherwise.	10.9	References to the singular will include reference to the plural (and vice versa) and reference to any one gender will include reference to the other genders.
8.1.7	to repossess the <i>Lot</i> (or any part thereof) which has not become your property, and for this purpose (unless the <i>Buyer</i> buys the <i>Lot</i> as a <i>Consumer</i> from the <i>Seller</i> selling in the course of a <i>Business</i>) you hereby grant an irrevocable licence to the <i>Seller</i> by himself and to his servants or agents to enter upon all or any of your premises (with or without vehicles) during normal <i>Business</i> hours to take possession of the <i>Lot</i> or part thereof;	10.10		10.10	Reference to a numbered paragraph is to a paragraph of the <i>Contract for Sale</i> .
8.1.8	to retain possession of any other property sold to you by the <i>Seller</i> at the <i>Sale</i> or any other auction or by private treaty until all sums due under the <i>Contract for Sale</i> shall have been paid in full in cleared funds;	10.11		10.11	Save as expressly provided in paragraph 10.12 nothing in the <i>Contract for Sale</i> confers (or purports to confer) on any person who is not a party to the <i>Contract for Sale</i> any benefit conferred by, or the right to enforce any term of, the <i>Contract for Sale</i> .
8.1.9	to retain possession of, and on three months' written notice to sell, <i>Without Reserve</i> , any of your other property in the possession of the <i>Seller</i> and/or of <i>Bonhams</i> (as bailee for the <i>Seller</i>) for any purpose (including, without limitation, other goods sold to you) and to apply any monies due to you as a result of such <i>Sale</i> in satisfaction or part satisfaction of any amounts owed to the <i>Seller</i> or to <i>Bonhams</i> ; and	10.12		10.12	Where the <i>Contract for Sale</i> confers an immunity from, and/or an exclusion or restriction of, the responsibility and/or liability of the <i>Seller</i> , it will also operate in favour and for the benefit of <i>Bonhams</i> , <i>Bonhams'</i> holding company and the subsidiaries of such holding company and the successors and assigns of <i>Bonhams</i> and of such companies and of any officer, employee and agent of <i>Bonhams</i> and such companies, each of whom will be entitled to rely on the relevant immunity and/or exclusion and/or restriction within and for the purposes of Contracts (Rights of Third Parties) Act 1999, which enables the benefit of a contract to be extended to a person who is not a party to the contract, and generally at law.
8.1.10	so long as such goods remain in the possession of the <i>Seller</i> or <i>Bonhams</i> as its bailee, to rescind the contract for the <i>Sale</i> of any other goods sold to you by the <i>Seller</i> at the <i>Sale</i> or at any other auction or by private treaty and apply any monies received from you in respect of such goods in part or full satisfaction of any amounts owed to the <i>Seller</i> or to <i>Bonhams</i> by you.	9.4	Nothing set out in paragraphs 9.1 to 9.3 above will be construed as excluding or restricting (whether directly or indirectly) any person's liability or excluding or restricting any person's rights or remedies in respect of (i) fraud, or (ii) death or personal injury caused by the <i>Seller's</i> negligence (or any person under the <i>Seller's</i> control or for whom the <i>Seller</i> is legally responsible), or (iii) acts or omissions for which the <i>Seller</i> is liable under the Occupiers Liability Act 1957, or (iv) any other liability to the extent the same may not be excluded or restricted as a matter of law.		
8.2	You agree to indemnify the <i>Seller</i> against all legal and other costs of enforcement, all losses and other <i>Expenses</i> and costs (including any monies payable to <i>Bonhams</i> in order to obtain the release of the <i>Lot</i>) incurred by the <i>Seller</i> (whether or not court proceedings will have been issued) as a result of <i>Bonhams</i> taking steps under this paragraph 8 on a full indemnity basis together with interest thereon (after as well as before judgement or order) at the rate specified in paragraph 8.1.6 from the date upon which the <i>Seller</i> becomes liable to pay the same until payment by you.	10	MISCELLANEOUS	10.1	You may not assign either the benefit or burden of the <i>Contract for Sale</i> .
8.3	On any resale of the <i>Lot</i> under paragraph 8.1.2, the <i>Seller</i> will account to you in respect of any balance remaining from any monies received by him or on his behalf in respect of the <i>Lot</i> , after the payment of	10.2		10.2	The <i>Seller's</i> failure or delay in enforcing or exercising any power or right under the <i>Contract for Sale</i> will not operate or be deemed to operate as a waiver of his rights under it except to the extent of any express
					waiver given to you in writing. Any such waiver will not affect the <i>Seller's</i> ability subsequently to enforce any right arising under the <i>Contract for Sale</i> .

11 GOVERNING LAW

All transactions to which the *Contract for Sale* applies and all connected matters will be governed by and construed in accordance with the laws of that part of the United Kingdom where the *Sale* takes place and the *Seller* and you each submit to the exclusive jurisdiction of the courts of that part of the United Kingdom, save that the *Seller* may bring proceedings against you in any other court of competent jurisdiction to the extent permitted by the laws of the relevant jurisdiction. *Bonhams* has a complaints procedure in place.

APPENDIX 2

BUYER'S AGREEMENT

IMPORTANT: These terms may be changed in advance of the *Sale of the Lot* to you, by the setting out of different terms in the *Catalogue* for the *Sale* and/or by placing an insert in the *Catalogue* and/or by notices at the *Sale* venue and/or by oral announcements before and during the *Sale* at the *Sale* venue. You should be alert to this possibility of changes and ask in advance of bidding if there have been any.

1 THE CONTRACT

1.1 These terms govern the contract between *Bonhams* personally and the *Buyer*, being the person to whom a *Lot* has been knocked down by the *Auctioneer*.

1.2 The Definitions and Glossary contained in Appendix 3 to the *Catalogue* for the *Sale* are incorporated into this agreement and a separate copy can also be provided by us on request. Where words and phrases which are defined in the List of Definitions are used in this agreement, they are printed in italics. Reference is made in this agreement to information printed in the *Notice to Bidders*, printed in the *Catalogue* for the *Sale*, and where such information is referred to it is incorporated into this agreement.

1.3 Except as specified in paragraph 4 of the *Notice to Bidders* the *Contract for Sale of the Lot* between you and the *Seller* is made on the fall of the *Auctioneer's* hammer in respect of the *Lot*, when it is knocked down to you. At that moment a separate contract is also made between you and *Bonhams* on the terms in this *Buyer's Agreement*.

1.4 We act as agents for the *Seller* and are not answerable or personally responsible to you for any breach of contract or other default by the *Seller*, unless *Bonhams* sells the *Lot* as principal.

1.5 Our personal obligations to you are governed by this agreement and we agree, subject to the terms below, to the following obligations:

1.5.1 we will, until the date and time specified in the *Notice to Bidders* or otherwise notified to you, store the *Lot* in accordance with paragraph 5;

1.5.2 subject to any power of the *Seller* or us to refuse to release the *Lot* to you, we will release the *Lot* to you in accordance with paragraph 4 once you have paid to us, in cleared funds, everything due to us and the *Seller*;

1.5.3 we will provide guarantees in the terms set out in paragraphs 9 and 10.

1.6 We do not make or give and do not agree to make or give any contractual promise, undertaking, obligation, *Guarantee*, warranty, representation of fact in relation to any *Description* of the *Lot* or any *Estimate* in relation to it, nor of the accuracy or completeness of any *Description* or *Estimate* which may have been made by us or on our behalf or by or on behalf of the *Seller* (whether made orally or in

writing, including in the *Catalogue* or on *Bonhams' Website*, or by conduct, or otherwise), and whether made before or after this agreement or prior to or during the *Sale*. No such *Description* or *Estimate* is incorporated into this agreement between you and us. Any such *Description* or *Estimate*, if made by us or on our behalf, was (unless *Bonhams* itself sells the *Lot* as principal) made as agent on behalf of the *Seller*.

2 PERFORMANCE OF THE CONTRACT FOR SALE

You undertake to us personally that you will observe and comply with all your obligations and undertakings to the *Seller* under the *Contract for Sale* in respect of the *Lot*.

3 PAYMENT

3.1 Unless agreed in writing between you and us or as otherwise set out in the *Notice to Bidders*, you must pay to us by not later than 4.30pm on the second working day following the *Sale*:

3.1.1 the *Purchase Price* for the *Lot*;

3.1.2 a *Buyer's Premium* in accordance with the rates set out in the *Notice to Bidders*, and

3.1.3 if the *Lot* is marked [AR], an *Additional Premium* which is calculated and payable in accordance with the *Notice to Bidders* together with *VAT* on that sum if applicable so that all sums due to us are cleared funds by the seventh working day after the *Sale*.

3.2 You must also pay us on demand any *Expenses* payable pursuant to this agreement.

3.3 All payments to us must be made in the currency in which the *Sale* was conducted, using, unless otherwise agreed by us in writing, one of the methods of payment set out in the *Notice to Bidders*. Our invoices will only be addressed to the registered *Bidder* unless the *Bidder* is acting as an agent for a named principal and we have approved that arrangement, in which case we will address the invoice to the principal.

3.4 Unless otherwise stated in this agreement all sums payable to us will be subject to *VAT* at the appropriate rate and *VAT* will be payable by you on all such sums.

3.5 We may deduct and retain for our own benefit from the monies paid by you to us the *Buyer's Premium*, the *Commission* payable by the *Seller* in respect of the *Lot*, any *Expenses* and *VAT* and any interest earned and/or incurred until payment to the *Seller*.

3.6 Time will be of the essence in relation to any payment payable to us. If you do not pay the *Purchase Price*, or any other sum due to us in accordance with this paragraph 3, we will have the rights set out in paragraph 7 below.

3.7 Where a number of *Lots* have been knocked down to you, any monies we receive from you will be applied firstly pro-rata to pay the *Purchase Price* of each *Lot* and secondly pro-rata to pay all amounts due to *Bonhams*.

4 COLLECTION OF THE LOT

4.1 Subject to any power of the *Seller* or us to refuse to release the *Lot* to you, once you have paid to us, in cleared funds, everything due to the *Seller* and to us, we will release the *Lot* to you or as you may direct us in writing. The *Lot* will only be released on production of a buyer collection document, obtained from our cashier's office.

4.2 You must collect and remove the *Lot* at your own expense by the date and time specified in the *Notice to Bidders*, or if no date is specified, by 4.30pm on the seventh day after the *Sale*.

4.3 For the period referred to in paragraph 4.2, the *Lot* can be collected from the address referred to in the *Notice to Bidders* for collection on the days and times specified in the *Notice to Bidders*. Thereafter, the *Lot* may be removed elsewhere for storage and you must enquire from us as to when and where you can collect it, although this information will usually be set out in the *Notice to Bidders*.

4.4 If you have not collected the *Lot* by the date specified in the *Notice to Bidders*, you authorise us, acting as your agent and on your behalf, to enter into a contract (the "*Storage Contract*") with the *Storage Contractor* for the storage of the *Lot* on the then current standard terms and conditions agreed between *Bonhams* and the *Storage Contractor* (copies of which are available on request). If the *Lot* is stored at our premises storage fees at our current daily rates (currently a minimum of £3 plus *VAT* per *Lot* per day) will be payable from the expiry of the period referred to in paragraph 4.2. These storage fees form part of our *Expenses*.

4.5 Until you have paid the *Purchase Price* and any *Expenses* in full the *Lot* will either be held by us as agent on behalf of the *Seller* or held by the *Storage Contractor* as agent on behalf of the *Seller* and ourselves on the terms contained in the *Storage Contract*.

4.6 You undertake to comply with the terms of any *Storage Contract* and in particular to pay the charges (and all costs of moving the *Lot* into storage) due under any *Storage Contract*. You acknowledge and agree that you will not be able to collect the *Lot* from the *Storage Contractor's* premises until you have paid the *Purchase Price*, any *Expenses* and all charges due under the *Storage Contract*.

4.7 You will be wholly responsible for packing, handling and transport of the *Lot* on collection and for complying with all import or export regulations in connection with the *Lot*.

4.8 You will be wholly responsible for any removal, storage, or other charges for any *Lot* not removed in accordance with paragraph 4.2, payable at our current rates, and any *Expenses* we incur (including any charges due under the *Storage Contract*), all of which must be paid by you on demand and in any event before any collection of the *Lot* by you or on your behalf.

5 STORING THE LOT

We agree to store the *Lot* until the earlier of your removal of the *Lot* or until the time and date set out in the *Notice to Bidders*, on the *Sale* Information Page or at the back of the catalogue (or if no date is specified, by 4.30pm on the seventh day after the *Sale*) and, subject to paragraphs 6 and 10, to be responsible as *bailee* to you for damage to or the loss or destruction of the *Lot* (notwithstanding that it is not your property before payment of the *Purchase Price*). If you do not collect the *Lot* before the time and date set out in the *Notice to Bidders* (or if no date is specified, by 4.30pm on the seventh day after the *Sale*) we may remove the *Lot* to another location, the details of which will usually be set out in the relevant section of the *Catalogue*. If you have not paid for the *Lot* in accordance with paragraph 3, and the *Lot* is moved to any third party's premises, the *Lot* will be held by such third party strictly to *Bonhams'* order and we will retain our lien over the *Lot* until we have been paid in full in accordance with paragraph 3.

6	RESPONSIBILITY FOR THE LOT	7.2	You agree to indemnify us against all legal and other costs, all losses and all other <i>Expenses</i> (whether or not court proceedings will have been issued) incurred by us as a result of our taking steps under this paragraph 7 on a full indemnity basis together with interest thereon (after as well as before judgement or order) at the rate specified in paragraph 7.1.5 from the date upon which we become liable to pay the same until payment by you.	9.2.2	you notify us in writing as soon as reasonably practicable after you have become aware that the <i>Lot</i> is or may be a <i>Forgery</i> , and in any event within one year after the <i>Sale</i> , that the <i>Lot</i> is a <i>Forgery</i> ; and
6.1	Only on the payment of the <i>Purchase Price</i> to us will title in the <i>Lot</i> pass to you. However under the <i>Contract for Sale</i> , the risk in the <i>Lot</i> passed to you when it was knocked down to you.	7.3	If you pay us only part of the sums due to us such payment shall be applied firstly to the <i>Purchase Price</i> of the <i>Lot</i> (or where you have purchased more than one <i>Lot</i> pro-rata towards the <i>Purchase Price</i> of each <i>Lot</i>) and secondly to the <i>Buyer's Premium</i> (or where you have purchased more than one <i>Lot</i> pro-rata to the <i>Buyer's Premium</i> on each <i>Lot</i>) and thirdly to any other sums due to us.	9.2.3	within one month after such notification has been given, you return the <i>Lot</i> to us in the same condition as it was at the time of the <i>Sale</i> , accompanied by written evidence that the <i>Lot</i> is a <i>Forgery</i> and details of the <i>Sale</i> and <i>Lot</i> number sufficient to identify the <i>Lot</i> .
6.2	You are advised to obtain insurance in respect of the <i>Lot</i> as soon as possible after the <i>Sale</i> .	7.4	We will account to you in respect of any balance we hold remaining from any monies received by us in respect of any <i>Sale</i> of the <i>Lot</i> under our rights under this paragraph 7 after the payment of all sums due to us and/or the <i>Seller</i> within 28 days of receipt by us of all such sums paid to us.	9.3	Paragraph 9 will not apply in respect of a <i>Forgery</i> if:
7	FAILURE TO PAY OR TO REMOVE THE LOT AND PART PAYMENTS	8	CLAIMS BY OTHER PERSONS IN RESPECT OF THE LOT	9.3.1	the <i>Entry</i> in relation to the <i>Lot</i> contained in the <i>Catalogue</i> reflected the then accepted general opinion of scholars and experts or fairly indicated that there was a conflict of such opinion or reflected the then current opinion of an expert acknowledged to be a leading expert in the relevant field; or
7.1	If all sums payable to us are not so paid in full at the time they are due and/or the <i>Lot</i> is not removed in accordance with this agreement, we will without further notice to you be entitled to exercise one or more of the following rights (without prejudice to any rights we may exercise on behalf of the <i>Seller</i>):	8.1	Whenever it becomes apparent to us that the <i>Lot</i> is the subject of a claim by someone other than you and other than the <i>Seller</i> (or that such a claim can reasonably be expected to be made), we may, at our absolute discretion, deal with the <i>Lot</i> in any manner which appears to us to recognise the legitimate interests of ourselves and the other parties involved and lawfully to protect our position and our legitimate interests. Without prejudice to the generality of the discretion and by way of example, we may:	9.3.2	it can be established that the <i>Lot</i> is a <i>Forgery</i> only by means of a process not generally accepted for use until after the date on which the <i>Catalogue</i> was published or by means of a process which it was unreasonable in all the circumstances for us to have employed.
7.1.1	to terminate this agreement immediately for your breach of contract;	8.1.1	retain the <i>Lot</i> to investigate any question raised or reasonably expected by us to be raised in relation to the <i>Lot</i> ; and/or	9.4	You authorise us to carry out such processes and tests on the <i>Lot</i> as we in our absolute discretion consider necessary to satisfy ourselves that the <i>Lot</i> is or is not a <i>Forgery</i> .
7.1.2	to retain possession of the <i>Lot</i> ;	8.1.2	deliver the <i>Lot</i> to a person other than you; and/or	9.5	If we are satisfied that a <i>Lot</i> is a <i>Forgery</i> we will (as principal) purchase the <i>Lot</i> from you and you will transfer the title to the <i>Lot</i> in question to us, with full title guarantee, free from any liens, charges, encumbrances and adverse claims, in accordance with the provisions of Sections 12(1) and 12(2) of the Sale of Goods Act 1979 and we will pay to you an amount equal to the sum of the <i>Purchase Price</i> , <i>Buyer's Premium</i> , <i>VAT</i> and <i>Expenses</i> paid by you in respect of the <i>Lot</i> .
7.1.3	to remove, and/or store the <i>Lot</i> at your expense;	8.1.3	commence interpleader proceedings or seek any other order of any court, mediator, arbitrator or government body; and/or	9.6	The benefit of paragraph 9 is personal to, and incapable of assignment by, you.
7.1.4	to take legal proceedings against you for payment of any sums payable to us by you (including the <i>Purchase Price</i>) and/or damages for breach of contract;	8.1.4	require an indemnity and/or security from you in return for pursuing a course of action agreed to by you.	9.7	If you sell or otherwise dispose of your interest in the <i>Lot</i> , all rights and benefits under this paragraph will cease.
7.1.5	to be paid interest on any monies due to us (after as well as before judgement or order) at the annual rate of 5% per annum above the base lending rate of National Westminster Bank Plc from time to time to be calculated on a daily basis from the date upon which such monies become payable until the date of actual payment;	8.2	The discretion referred to in paragraph 8.1:	9.8	Paragraph 9 does not apply to a <i>Lot</i> made up of or including a Chinese painting or Chinese paintings, a motor vehicle or motor vehicles, a <i>Stamp</i> or <i>Stamps</i> or a <i>Book</i> or <i>Books</i> .
7.1.6	to repossess the <i>Lot</i> (or any part thereof) which has not become your property, and for this purpose (unless you buy the <i>Lot</i> as a <i>Consumer</i>) you hereby grant an irrevocable licence to us, by ourselves, our servants or agents, to enter upon all or any of your premises (with or without vehicles) during normal business hours to take possession of any <i>Lot</i> or part thereof;	8.2.1	may be exercised at any time during which we have actual or constructive possession of the <i>Lot</i> , or at any time after such possession, where the cessation of such possession has occurred by reason of any decision, order or ruling of any court, mediator, arbitrator or government body; and	10	OUR LIABILITY
7.1.7	to sell the <i>Lot Without Reserve</i> by auction, private treaty or any other means on giving you three months' written notice of our intention to do so;	8.2.2	will not be exercised unless we believe that there exists a serious prospect of a good arguable case in favour of the claim.	10.1	We will not be liable whether in negligence, other tort, breach of contract or statutory duty or in restitution or under the Misrepresentation Act 1967 or in any other way for lack of conformity with or any inaccuracy, error, misdescription or omission in any <i>Description</i> of the <i>Lot</i> or any <i>Entry</i> or <i>Estimate</i> in respect of it, made by us or on our behalf or by or on behalf of the <i>Seller</i> (whether made in writing, including in the <i>Catalogue</i> , or on the <i>Bonhams' Website</i> , or orally, or by conduct or otherwise) and whether made before or after this agreement or prior to or during the <i>Sale</i> .
7.1.8	to retain possession of any of your other property in our possession for any purpose (including, without limitation, other goods sold to you or with us for <i>Sale</i>) until all sums due to us have been paid in full;	9	FORGERIES	10.2	Our duty to you while the <i>Lot</i> is at your risk and/or your property and in our custody and/or control is to exercise reasonable care in relation to it, but we will not be responsible for damage to the <i>Lot</i> or to other persons or things caused by:
7.1.9	to apply any monies received from you for any purpose whether at the time of your default or at any time thereafter in payment or part payment of any sums due to us by you under this agreement;	9.1	We undertake a personal responsibility for any <i>Forgery</i> in accordance with the terms of this paragraph 9.	10.2.1	handling the <i>Lot</i> if it was affected at the time of <i>Sale</i> to you by woodworm and any damage is caused as a result of it being affected by woodworm; or
7.1.10	on three months' written notice to sell, <i>Without Reserve</i> , any of your other property in our possession or under our control for any purpose (including other goods sold to you or with us for <i>Sale</i>) and to apply any monies due to you as a result of such <i>Sale</i> in payment or part payment of any amounts owed to us;	9.2	Paragraph 9 applies only if:		
7.1.11	refuse to allow you to register for a future <i>Sale</i> or to reject a bid from you at any future <i>Sale</i> or to require you to pay a deposit before any bid is accepted by us at any future <i>Sale</i> in which case we will be entitled to apply such deposit in payment or part payment, as the case may be, of the <i>Purchase Price</i> of any <i>Lot</i> of which you are the <i>Buyer</i> .	9.2.1	your name appears as the named person to whom the original invoice was made out by us in respect of the <i>Lot</i> and that invoice has been paid; and		

- 10.2.2 changes in atmospheric pressure; nor will we be liable for:
- 10.2.3 damage to tension stringed musical instruments; or
- 10.2.4 damage to gilded picture frames, plaster picture frames or picture frame glass; and if the *Lot* is or becomes dangerous, we may dispose of it without notice to you in advance in any manner we think fit and we will be under no liability to you for doing so.
- 10.3.1 We will not be liable to you for any loss of *Business*, *Business* profits, revenue or income or for loss of *Business* reputation or for disruption to *Business* or wasted time on the part of the *Buyer's* management or staff or, if you are buying the *Lot* in the course of a *Business*, for any indirect losses or consequential damages of any kind, irrespective in any case of the nature, volume or source of the loss or damage alleged to be suffered, and irrespective of whether the said loss or damage is caused by or claimed in respect of any negligence, other tort, breach of contract, statutory duty, bailee's duty, a restitutionary claim or otherwise.
- 10.3.2 Unless you buy the *Lot* as a *Consumer*, in any circumstances where we are liable to you in respect of a *Lot*, or any act, omission, statement, representation in respect of it, or this agreement or its performance, and whether in damages, for an indemnity or contribution or for a restitutionary remedy or in any way whatsoever, our liability will be limited to payment of a sum which will not exceed by way of maximum the amount of the *Purchase Price of the Lot plus Buyer's Premium* (less any sum you may be entitled to recover from the *Seller*) irrespective in any case of the nature, volume or source of any loss or damage alleged to be suffered or sum claimed as due, and irrespective of whether the liability arises from negligence, other tort, breach of contract, statutory duty, bailee's duty, a restitutionary claim or otherwise.
- You may wish to protect yourself against loss by obtaining insurance.
- 10.4 Nothing set out above will be construed as excluding or restricting (whether directly or indirectly) any person's liability or excluding or restricting any person's rights or remedies in respect of (i) fraud, or (ii) death or personal injury caused by our negligence (or any person under our control or for whom we are legally responsible), or (iii) acts or omissions for which we are liable under the Occupiers Liability Act 1957, or (iv) any other liability to the extent the same may not be excluded or restricted as a matter of law, or (v) under our undertaking in paragraph 9 of these conditions.

11 MISCELLANEOUS

- 11.1 You may not assign either the benefit or burden of this agreement.
- 11.2 Our failure or delay in enforcing or exercising any power or right under this agreement will not operate or be deemed to operate as a waiver of our rights under it except to the extent of any express waiver given to you in writing. Any such waiver will not affect our ability subsequently to enforce any right arising under this agreement.
- 11.3 If either party to this agreement is prevented from performing that party's respective obligations under this agreement by circumstances beyond its reasonable control or if performance of its obligations would by reason of such circumstances give rise to a significantly increased financial cost to it, that party will not, for so long as such circumstances prevail, be required to perform such obligations. This paragraph does not apply to the obligations imposed on you by paragraph 3.

- 11.4 Any notice or other communication to be given under this agreement must be in writing and may be delivered by hand or sent by first class post or air mail or fax transmission (if to *Bonhams* marked for the attention of the Company Secretary), to the address or fax number of the relevant party given in the *Contract Form* (unless notice of any change of address is given in writing). It is the responsibility of the sender of the notice or communication to ensure that it is received in a legible form within any applicable time period.
- 11.5 If any term or any part of any term of this agreement is held to be unenforceable or invalid, such unenforceability or invalidity will not affect the enforceability and validity of the remaining terms or the remainder of the relevant term.
- 11.6 References in this agreement to *Bonhams* will, where appropriate, include reference to *Bonhams'* officers, employees and agents.
- 11.7 The headings used in this agreement are for convenience only and will not affect its interpretation.
- 11.8 In this agreement "including" means "including, without limitation".
- 11.9 References to the singular will include reference to the plural (and vice versa) and reference to any one gender will include reference to the other genders.
- 11.10 Reference to a numbered paragraph is to a paragraph of this agreement.
- 11.11 Save as expressly provided in paragraph 11.12 nothing in this agreement confers (or purports to confer) on any person who is not a party to this agreement any benefit conferred by, or the right to enforce any term of, this agreement.
- 11.12 Where this agreement confers an immunity from, and/or an exclusion or restriction of, the responsibility and/or liability of *Bonhams*, it will also operate in favour and for the benefit of *Bonhams'* holding company and the subsidiaries of such holding company and the successors and assigns of *Bonhams* and of such companies and of any officer, employee and agent of *Bonhams* and such companies, each of whom will be entitled to rely on the relevant immunity and/or exclusion and/or restriction within and for the purposes of Contracts (Rights of Third Parties) Act 1999, which enables the benefit of a contract to be extended to a person who is not a party to the contract, and generally at law.

12 GOVERNING LAW

All transactions to which this agreement applies and all connected matters will be governed by and construed in accordance with the laws of that part of the United Kingdom where the *Sale* takes (or is to take) place and we and you each submit to the exclusive jurisdiction of the courts of that part of the United Kingdom, save that we may bring proceedings against you in any other court of competent jurisdiction to the extent permitted by the laws of the relevant jurisdiction. *Bonhams* has a complaints procedure in place.

DATA PROTECTION – USE OF YOUR INFORMATION

Where we obtain any personal information about you, we shall only use it in accordance with the terms of our Privacy Policy (subject to any additional specific consent(s) you may have given at the time your information was disclosed). A copy of our Privacy Policy can be found on our Website www.bonhams.com or requested by post from Customer Services Department, 101 New Bond Street, London W1S 1SR, United Kingdom or by email from info@bonhams.com.

APPENDIX 3

DEFINITIONS AND GLOSSARY

Where these Definitions and Glossary are incorporated, the following words and phrases used have (unless the context otherwise requires) the meanings given to them below. The Glossary is to assist you to understand words and phrases which have a specific legal meaning with which you may not be familiar.

LIST OF DEFINITIONS

"**Additional Premium**" a premium, calculated in accordance with the *Notice to Bidders*, to cover *Bonhams' Expenses* relating to the payment of royalties under the Artists Resale Right Regulations 2006 which is payable by the *Buyer* to *Bonhams* on any *Lot* marked [AR] which sells for a *Hammer Price* which together with the *Buyer's Premium* (but excluding any VAT) equals or exceeds 1000 euros (converted into the currency of the *Sale* using the European Central Bank Reference rate prevailing on the date of the *Sale*).

"**Auctioneer**" the representative of *Bonhams* conducting the *Sale*.

"**Bidder**" a person who has completed a *Bidding Form*.

"**Bidding Form**" our Bidding Registration Form, our Absentee Bidding Form or our Telephone Bidding Form.

"**Bonhams**" *Bonhams* 1793 Limited or its successors or assigns. *Bonhams* is also referred to in the *Buyer's Agreement*, the Conditions of Business and the *Notice to Bidders* by the words "we", "us" and "our".

"**Book**" a printed *Book* offered for *Sale* at a specialist *Book Sale*.

"**Business**" includes any trade, *Business* and profession.

"**Buyer**" the person to whom a *Lot* is knocked down by the *Auctioneer*. The *Buyer* is also referred to in the *Contract for Sale* and the *Buyer's Agreement* by the words "you" and "your".

"**Buyer's Agreement**" the contract entered into by *Bonhams* with the *Buyer* (see Appendix 2 in the *Catalogue*).

"**Buyer's Premium**" the sum calculated on the *Hammer Price* at the rates stated in the *Notice to Bidders*.

"**Catalogue**" the *Catalogue* relating to the relevant *Sale*, including any representation of the *Catalogue* published on our Website.

"**Commission**" the *Commission* payable by the *Seller* to *Bonhams* calculated at the rates stated in the *Contract Form*.

"**Condition Report**" a report on the physical condition of a *Lot* provided to a *Bidder* or potential *Bidder* by *Bonhams* on behalf of the *Seller*.

"**Conditions of Sale**" the *Notice to Bidders*, *Contract for Sale*, *Buyer's Agreement* and Definitions and Glossary.

"**Consignment Fee**" a fee payable to *Bonhams* by the *Seller* calculated at rates set out in the Conditions of Business.

"**Consumer**" a natural person who is acting for the relevant purpose outside his trade, *Business* or profession.

"**Contract Form**" the *Contract Form*, or vehicle *Entry* form, as applicable, signed by or on behalf of the *Seller* listing the *Lots* to be offered for *Sale* by *Bonhams*.

"**Contract for Sale**" the *Sale* contract entered into by the *Seller* with the *Buyer* (see Appendix 1 in the *Catalogue*).

"**Contractual Description**" the only *Description* of the *Lot* (being that part of the *Entry* about the *Lot* in the *Catalogue* which is in bold letters, any photograph (except for the colour) and the contents of any *Condition Report*) to which the *Seller* undertakes in the *Contract of Sale* the *Lot* corresponds.

"**Description**" any statement or representation in any way descriptive of the *Lot*, including any statement or representation relating to its authorship, attribution, condition, provenance, authenticity, style, period, age, suitability, quality, origin, value, estimated selling price (including the *Hammer Price*).

"**Entry**" a written statement in the *Catalogue* identifying the *Lot* and its *Lot* number which may contain a *Description* and illustration(s) relating to the *Lot*.

"**Estimate**" a statement of our opinion of the range within which the hammer is likely to fall.

"Expenses" charges and *Expenses* paid or payable by *Bonhams* in respect of the *Lot* including legal *Expenses*, banking charges and *Expenses* incurred as a result of an electronic transfer of money, charges and *Expenses* for loss and damage cover, insurance, *Catalogue* and other reproductions and illustrations, any customs duties, advertising, packing or shipping costs, reproductions rights' fees, taxes, levies, costs of testing, searches or enquiries, preparation of the *Lot* for *Sale*, storage charges, removal charges, removal charges or costs of collection from the *Seller* as the *Seller's* agents or from a defaulting *Buyer*, plus *VAT* if applicable.

"Forgery" an imitation intended by the maker or any other person to deceive as to authorship, attribution, origin, authenticity, style, date, age, period, provenance, culture, source or composition, which at the date of the *Sale* had a value materially less than it would have had if the *Lot* had not been such an imitation, and which is not stated to be such an imitation in any description of the *Lot*. A *Lot* will not be a *Forgery* by reason of any damage to, and/or restoration and/or modification work (including repainting or over painting) having been carried out on the *Lot*, where that damage, restoration or modification work (as the case may be) does not substantially affect the identity of the *Lot* as one conforming to the *Description* of the *Lot*.

"Guarantee" the obligation undertaken personally by *Bonhams* to the *Buyer* in respect of any *Forgery* and, in the case of specialist *Stamp Sales* and/or specialist *Book Sales*, a *Lot* made up of a *Stamp* or *Stamps* or a *Book* or *Books* as set out in the *Buyer's Agreement*.

"Hammer Price" the price in the currency in which the *Sale* is conducted at which a *Lot* is knocked down by the *Auctioneer*.

"Loss and Damage Warranty" means the warranty described in paragraph 8.2 of the *Conditions of Business*.

"Loss and Damage Warranty Fee" means the fee described in paragraph 8.2.3 of the *Conditions of Business*.

"Lot" any item consigned to *Bonhams* with a view to its *Sale* at auction or by private treaty (and reference to any *Lot* will include, unless the context otherwise requires, reference to individual items comprised in a group of two or more items offered for *Sale* as one *Lot*).

"Motoring Catalogue Fee" a fee payable by the *Seller* to *Bonhams* in consideration of the additional work undertaken by *Bonhams* in respect of the cataloguing of motor vehicles and in respect of the promotion of *Sales* of motor vehicles.

"New Bond Street" means *Bonhams'* saleroom at 101 New Bond Street, London W1S 1SR.

"Notional Charges" the amount of *Commission* and *VAT* which would have been payable if the *Lot* had been sold at the *Notional Price*.

"Notional Fee" the sum on which the *Consignment Fee* payable to *Bonhams* by the *Seller* is based and which is calculated according to the formula set out in the *Conditions of Business*.

"Notional Price" the latest in time of the average of the high and low *Estimates* given by us to you or stated in the *Catalogue* or, if no such *Estimates* have been given or stated, the *Reserve* applicable to the *Lot*.

"Notice to Bidders" the notice printed at the back or front of our *Catalogues*.

"Purchase Price" the aggregate of the *Hammer Price* and *VAT* on the *Hammer Price*.

"Reserve" the minimum price at which a *Lot* may be sold (whether at auction or by private treaty).

"Sale" the auction *Sale* at which a *Lot* is to be offered for *Sale* by *Bonhams*.

"Sale Proceeds" the net amount due to the *Seller* from the *Sale* of a *Lot*, being the *Hammer Price* less the *Commission*, any *VAT* chargeable thereon, *Expenses* and any other amount due to us in whatever capacity and howsoever arising.

"Seller" the person who offers the *Lot* for *Sale* named on the *Contract Form*. Where the person so named identifies on the form another person as acting as his agent, or where the person named on the *Contract Form* acts as an agent for a principal (whether such agency is disclosed to *Bonhams* or not), **"Seller"** includes both the agent and the principal who shall be jointly and severally liable as such. The *Seller* is also referred to in the *Conditions of Business* by the words "you" and "your".

"Specialist Examination" a visual examination of a *Lot* by a specialist on the *Lot*.

"Stamp" means a postage *Stamp* offered for *Sale* at a Specialist *Stamp Sale*.

"Standard Examination" a visual examination of a *Lot* by a non-specialist member of *Bonhams'* staff.

"Storage Contract" means the contract described in paragraph 8.3.3 of the *Conditions of Business* or paragraph 4.4 of the *Buyer's Agreement* (as appropriate).

"Storage Contractor" means the company identified as such in the *Catalogue*.

"Terrorism" means any act or threatened act of terrorism, whether any person is acting alone or on behalf of or in connection with any organisation(s) and/or government(s), committed for political, religious or ideological or similar purposes including, but not limited to, the intention to influence any government and/or put the public or any section of the public into fear.

"Trust Account" the bank account of *Bonhams* into which all sums received in respect of the *Purchase Price* of any *Lot* will be paid, such account to be a distinct and separate account to *Bonhams'* normal business bank account.

"VAT" value added tax at the prevailing rate at the date of the *Sale* in the United Kingdom.

"Website" *Bonhams Website* at www.bonhams.com

"Withdrawal Notice" the *Seller's* written notice to *Bonhams* revoking *Bonhams'* instructions to sell a *Lot*.

"Without Reserve" where there is no minimum price at which a *Lot* may be sold (whether at auction or by private treaty).

GLOSSARY

The following expressions have specific legal meanings with which you may not be familiar. The following glossary is intended to give you an understanding of those expressions but is not intended to limit their legal meanings:

"artist's resale right": the right of the creator of a work of art to receive a payment on *Sales* of that work subsequent to the original *Sale* of that work by the creator of it as set out in the *Artists Resale Right Regulations 2006*.

"bailee": a person to whom goods are entrusted.

"indemnity": an obligation to put the person who has the benefit of the indemnity in the same position in which he would have been, had the circumstances giving rise to the indemnity not arisen and the expression "indemnify" is construed accordingly.

"interpleader proceedings": proceedings in the Courts to determine ownership or rights over a *Lot*.

"knocked down": when a *Lot* is sold to a *Bidder*, indicated by the fall of the hammer at the *Sale*.

"lien": a right for the person who has possession of the *Lot* to retain possession of it.

"risk": the possibility that a *Lot* may be lost, damaged, destroyed, stolen, or deteriorate in condition or value.

"title": the legal and equitable right to the ownership of a *Lot*.

"tort": a legal wrong done to someone to whom the wrong doer has a duty of care.

SALE OF GOODS ACT 1979

The following is an extract from the *Sale of Goods Act 1979*:

"Section 12 Implied terms about title, etc

- (1) In a contract of sale, other than one to which subsection (3) below applies, there is an implied term on the part of the seller that in the case of a sale he has a right to sell the goods, and in the case of an agreement to sell he will have such a right at the time when the property is to pass.
- (2) In a contract of sale, other than one to which subsection (3) below applies, there is also an implied term that—
 - (a) the goods are free, and will remain free until the time when the property is to pass, from any charge or encumbrance not disclosed or known to the buyer before the contract is made, and
 - (b) the buyer will enjoy quiet possession of the goods except in so far as it may be disturbed by the owner or other person entitled to the benefit of any charge or encumbrance so disclosed or known.

(3) This subsection applies to a contract of sale in the case of which there appears from the contract or is to be inferred from its circumstances an intention that the seller should transfer only such title as he or a third person may have.

(4) In a contract to which subsection (3) above applies there is an implied term that all charges or encumbrances known to the seller and not known to the buyer have been disclosed to the buyer before the contract is made.

(5) In a contract to which subsection (3) above applies there is also an implied term that none of the following will disturb the buyer's quiet possession of the goods, namely:

- (a) the seller;
- (b) in a case where the parties to the contract intend that the seller should transfer only such title as a third person may have, that person;
- (c) anyone claiming through or under the seller or that third person otherwise than under a charge or encumbrance disclosed or known to the buyer before the contract is made.

(5A) As regards England and Wales and Northern Ireland, the term implied by subsection (1) above is a condition and the terms implied by subsections (2), (4) and (5) above are warranties."

Bonhams Specialist Departments

To e-mail any of the below use the first name dot second name @bonhams.com eg. charles.obrien@bonhams.com

19th Century Paintings

UK
Charles O' Brien
+44 20 7468 8360
U.S.A
Madalina Lazen
+1 212 644 9108

20th Century British Art

Matthew Bradbury
+44 20 7468 8295

Aboriginal Art

Greer Adams
+61 2 8412 2222

African and Oceanic Art

UK
Philip Keith
+44 2920 727 980
U.S.A
Fred Baklar
+1 323 436 5416

American Paintings

Alan Fausel
+1 212 644 9039

Antiquities

Madeleine Perridge
+44 20 7468 8226

Antique Arms & Armour

UK
David Williams
+44 20 7393 3807
U.S.A
Paul Carella
+1 415 503 3360

Art Collections, Estates & Valuations

Harvey Cammell
+44 (0) 207 468 8340

Art Nouveau & Decorative Art & Design

UK
Mark Oliver
+44 20 7393 3856
U.S.A
Frank Maraschiello
+1 212 644 9059

Australian Art

Litsa Veldekis
+61 2 8412 2222

Australian Colonial Furniture and Australiana

James Hendy
+61 2 8412 2222

Books, Maps & Manuscripts

UK
Matthew Haley
+44 20 7393 3817
U.S.A
Christina Geiger
+1 212 644 9094

British & European Glass

UK
Simon Cottle
+44 20 7468 8383
U.S.A.
Suzy Pai
+1 415 503 3343

British & European Porcelain & Pottery

UK
John Sandon
+44 20 7468 8244
U.S.A
Peter Scott
+1 415 503 3326

Contemporary Art

U.S.A
Jeremy Goldsmith
+1 212 644 9656

California & American Paintings

Scot Levitt
+1 323 436 5425

Carpets

UK
Mark Dance
+44 8700 27361
U.S.A.
Hadjji Rahimpour
+1 415 503 3392

Chinese & Asian Art

UK
Asaph Hyman
+44 20 7468 5888
U.S.A
Dessa Goddard
+1 415 503 3333
HONG KONG
Julian King
+852 2918 4321

Clocks

UK
James Stratton
+44 20 7468 8364
U.S.A
Jonathan Snellenburg
+1 212 461 6530

Coins & Medals

UK
John Millensted
+44 20 7393 3914
U.S.A
Paul Song
+1 323 436 5455

Contemporary Art & Modern Design

UK
Gareth Williams
+44 20 7468 5834
U.S.A
Sharon Goodman Squires
+1 212 644 9128

Costume & Textiles

Claire Browne
+44 1564 732969

Entertainment Memorabilia

UK
Stephanie Connell
+44 20 7393 3844
U.S.A
Catherine Williamson
+1 323 436 5442

Ethnographic Art

Jim Haas
+1 415 503 3294

Football Sporting Memorabilia

Dan Davies
+44 1244 353118

Furniture & Works of Art

UK
Fergus Lyons
+44 20 7468 8221
U.S.A
Jeffrey Smith
+1 415 503 3413

Greek Art

Olympia Pappa
+44 20 7468 8314

Golf Sporting Memorabilia

Kevin Mcgimpsey
+44 1244 353123

Irish Art

Penny Day
+44 20 7468 8366

Impressionist & Modern Art

Deborah Allan
+44 20 7468 8276

Islamic & Indian Art

Alice Bailey
+44 20 7468 8268

Japanese Art

UK
Suzannah Yip
+44 20 7468 8368
U.S.A
Jeff Olson
+1 212 461 6516

Jewellery

UK
Jean Ghika
+44 20 7468 8282
U.S.A
Susan Abeles
+1 212 461 6525
AUSTRALIA
Patti Sedgwick
+61 2 8412 2222

Marine Art

UK
Veronique Scorer
+44 207 393 3962
U.S.A
Gregg Dietrich
+1 917 206 1697

Mechanical Music

Jon Baddeley
+44 20 7393 3872

Modern, Contemporary & Latin American Art

U.S.A
Sharon Goodman Squires
+1 212 644 9128

Motor Cars

UK
Tim Schofield
+44 20 7468 5804
USA
Mark Osborne
+1 415 503 3353
EUROPE
Philip Kantor
+32 476 879 471
AUSTRALIA
Damien Duigan
+61 2 8412 2232
Automobilia
UK
Toby Wilson
+44 8700 273 619
USA
Kurt Forry
+1 415 391 4000

Motorcycles

Ben Walker
+44 8700 273616
Automobilia
Adrian Papiro
+44 8700 273621

Musical Instruments

Philip Scott
+44 20 7393 3855

Natural History

U.S.A
Claudia Florian
+1 323 436 5437

Old Master Pictures

UK
Andrew Mckenzie
+44 20 7468 8261
U.S.A
Mark Fisher
+1 323 436 5488

Orientalist Art

Charles O'Brien
+44 20 7468 8360

Photography

U.S.A
Judith Eurich
+1 415 503 3259

Portrait Miniatures

Camilla Lombardi
+44 20 7393 3985

Prints

UK
Rupert Worrall
+44 20 7468 8262
U.S.A
Judith Eurich
+1 415 503 3259

Russian Art

UK
Sophie Hamilton
+44 20 7468 8334
U.S.A
Yelena Harbick
+1 212 644 9136

Scientific Instruments

Jon Baddeley
+44 20 7393 3872
U.S.A.
Jonathan Snellenburg
+1 212 461 6530

Scottish Pictures

Chris Brickley
+44 131 240 2297

Silver & Gold Boxes

UK
Michael Moorcroft
+44 20 7468 8241
U.S.A
Aileen Ward
+1 800 223 5463

South African Art

Giles Peppiatt
+44 20 7468 8355

Sporting Guns

Patrick Hawes
+44 20 7393 3815

Toys, Dolls & Chess

Leigh Gotch
+44 20 8963 2839

Travel Pictures

Veronique Scorer
+44 207 393 3962

Urban Art

Gareth Williams
+44 20 7468 5879

Watches & Wristwatches

UK
Paul Maudsley
+44 20 7447 7412
U.S.A.
Jonathan Snellenburg
+1 212 461 6530
HONG KONG
Carson Chan
+852 2918 4321

Whisky

UK
Martin Green
+44 1292 520000
U.S.A
Joseph Hyman
+1 917 206 1661
HONG KONG
Daniel Lam
+852 3607 0004

Wine

UK
Richard Harvey
+44 (0) 8700 273622
U.S.A
Doug Davidson
+1 415 503 3363
HONG KONG
Daniel Lam
+852 3607 0004

UNITED KINGDOM

London
101 New Bond Street •
London W1S 1SR
+44 20 7447 7447
+44 20 7447 7400 fax

Montpelier Street •
London SW7 1HH
+44 20 7393 3900
+44 20 7393 3905 fax

South East England

Brighton & Hove
19 Palmeira Square
Hove, East Sussex
BN3 2JN
+44 1273 220 000
+44 1273 220 335 fax

Guildford
Millmead,
Guildford,
Surrey GU2 4BE
+44 1483 504 030
+44 1483 450 205 fax

Tunbridge Wells
Ground Floor
Royal Victoria House
51-55 The Pantiles
Tunbridge Wells, Kent
TN2 5TE
+44 1892 546 818
+44 1892 518 077 fax

Isle of Wight
+44 1983 282 228

Representative:
West Sussex
Jeff Burfield
+44 1243 787 548

South West England

Bath
Queen Square House
Charlotte Street
Bath BA1 2LL
+44 1225 788 988
+44 1225 446 675 fax

Cornwall – Truro
36 Lemon Street
Truro
Cornwall
TR1 2NR
+44 1872 250 170
+44 1872 250 179 fax

Exeter
The Lodge
Southernhay West Exeter,
Devon
EX1 1JG
+44 1392 425 264
+44 1392 494 561 fax

Winchester
The Red House
Hyde Street
Winchester
Hants SO23 7DX
+44 1962 862 515
+44 1962 865 166 fax

Tetbury
22a Long Street
Tetbury
Gloucestershire
GL8 8AQ
+44 1666 502 200
+44 1666 505 107 fax

Representatives:
Dorset
Bill Allan
+44 1935 815 271

East Anglia

Bury St. Edmunds
21 Churchgate Street
Bury St Edmunds
Suffolk IP33 1RG
+44 1284 716 190
+44 1284 755 844 fax

Norfolk
The Market Place
Reepham
Norfolk NR10 4JJ
+44 1603 871 443
+44 1603 872 973 fax

Midlands

Knowle
The Old House
Station Road
Knowle, Solihull
West Midlands
B93 0HT
+44 1564 776 151
+44 1564 778 069 fax

Oxford
Banbury Road
Shipton on Cherwell
Kidlington OX5 1JH
+44 1865 853 640
+44 1865 372 722 fax

Henley
The Coach House
66 Northfield End
Henley on Thames
Oxon RG9 2JN
+44 1491 413 636
+44 1491 413 637 fax

Yorkshire & North East England

Leeds
30 Park Square West
Leeds LS1 2PF
+44 113 234 5755
+44 113 244 3910 fax

North West England

Chester •
New House
150 Christleton Road
Chester, Cheshire
CH3 5TD
+44 1244 313 936
+44 1244 340 028 fax

Carlisle
48 Cecil Street
Carlisle, Cumbria
CA1 1NT
+44 1228 542 422
+44 1228 590 106 fax

Manchester
The Stables
213 Ashley Road
Hale WA15 9TB
+44 161 927 3822
+44 161 927 3824 fax

Southport
33 Botanic Road
Churchtown
Southport
Merseyside PR9 7NE
+44 1704 507 875
+44 1704 507 877 fax

Representative:
Isle of Man
Felicity Loughran
+44 1624 822 875

Channel Islands

Jersey
39 Don Street
St. Helier
JE2 4TR
+44 1534 722 441
+44 1534 759 354 fax

Representative:
Guernsey
+44 1481 722 448

Scotland

Edinburgh •
22 Queen Street
Edinburgh
EH2 1JX
+44 131 225 2266
+44 131 220 2547 fax

Glasgow
176 St. Vincent Street,
Glasgow
G2 5SG
+44 141 223 8866
+44 141 223 8868 fax

Representatives:
Wine & Spirits
Tom Gilbey
+44 1382 330 256

Wales

Cardiff
7-8 Park Place,
Cardiff CF10 3DP
+44 2920 727 980
+44 2920 727 989 fax

EUROPE

Austria - Vienna
Garnisonsgasse 4
1090 Vienna
+43 (0)1 403 00 01
vienna@bonhams.com

Belgium - Brussels
Boulevard
Saint-Michel 101
1040 Brussels
+32 (0)2 736 5076
+32 (0)2 732 5501 fax
belgium@bonhams.com

France - Paris
4 rue de la Paix
75002 Paris
+33 (0)1 42 61 1010
+33 (0)1 42 61 1015 fax
paris@bonhams.com

Germany - Cologne
Albertusstrasse 26
50667 Cologne
+49 (0)221 2779 9650
+49 (0)221 2779 9652 fax
cologne@bonhams.com

Germany - Munich
Maximilianstrasse 52
80538 Munich
+49 (0) 89 2420 5812
+49 (0) 89 2420 7523 fax
munich@bonhams.com

Ireland - Dublin
31 Molesworth Street
Dublin 2
+353 (0)1 602 0990
+353 (0)1 4004 140 fax
ireland@bonhams.com

Italy - Milan
Via Boccaccio 22
20123 Milano
+39 (0)2 4953 9020
+39 (0)2 4953 9021 fax
milan@bonhams.com

Italy - Rome
Via Sicilia 50
00187 Rome
+39 (0)6 48 5900
+39 (0)6 482 0479 fax
rome@bonhams.com

Netherlands - Amsterdam
de Lairessestraat 123
1075 HH Amsterdam
+31 20 67 09 701
+31 20 67 09 702 fax
amsterdam@bonhams.com

Spain - Madrid
Nuñez de Balboa no.4 - 1A
Madrid
28001
+34 91 578 17 27
madrid@bonhams.com

Switzerland - Geneva
Rue Etienne-Dumont 10
1204 Geneva
Switzerland
+41 76 379 9230
geneva@bonhams.com

Representatives:
Greece
Art Expertise
+30 210 3636 404

Marbella
James Roberts
+34 952 90 62 50
marbella@bonhams.com

Portugal
Filipa Rebelo de Andrade
+351 91 921 4778
portugal@bonhams.com

Russia
Marina Jacobson
+7 921 555 2302
russia@bonhams.com

NORTH AMERICA

USA

San Francisco •
220 San Bruno Avenue
San Francisco
CA 94103
+1 (415) 861 7500
+1 (415) 861 8951 fax

Los Angeles •
7601 W. Sunset Boulevard
Los Angeles
CA 90046
+1 (323) 850 7500
+1 (323) 850 6090 fax

New York •
580 Madison Avenue
New York, NY
10022
+1 (212) 644 9001
+1 (212) 644 9007 fax

Representatives:
Arizona
Terri Adrian-Hardy
+1 (480) 994 5362

California
Central Valley
David Daniel
+1 (916) 364 1645

District of Columbia/ Mid-Atlantic
Martin Gammon
+1 (202) 333 1696

Southern California
Christine Eisenberg
+1 (949) 646 6560

Florida
+1 (305) 228 6600

Georgia
Mary Moore Bethea
+1 (404) 842 1500

Illinois
Ricki Blumberg Harris
+1 (312) 475 3922
+1 (773) 267 3300

Massachusetts Boston/New England
Amy Corcoran
+1 (617) 742 0909

Nevada
David Daniel
+1 (775) 831 0330

New Mexico
Leslie Trilling
+1 (505) 820 0701

Oregon
Sheryl Acheson
+1(503) 312 6023

Texas
Amy Lawch
+1 (713) 621 5988

Washington
Heather O'Mahony
+1 (206) 218 5011

CANADA

Toronto, Ontario •
Jack Kerr-Wilson
20 Hazelton Avenue
Toronto, ONT
M5R 2E2
+1 (416) 462 9004
info.ca@bonhams.com

Montreal, Quebec
David Kelsey
+1 (514) 341 9238
info.ca@bonhams.com

SOUTH AMERICA

Argentina
Daniel Claramunt
+54 11 479 37600

Brazil
Thomaz Oscar Saavedra
+55 11 3031 4444
+55 11 3031 4444 fax

ASIA

Hong Kong
Carson Chan
Suite 1122
Two Pacific Place
88 Queensway
Admiralty
Hong Kong
+852 2918 4321
+852 2918 4320 fax
hongkong@bonhams.com

Beijing
Hongyu Yu
Room A515
F/5 CDB International
Mansion
No. 16 Yongnan Dongli
Chaoyang District
Beijing 100022
+86(0) 10 6563 7799
+86(0) 10 6563 7788 fax
beijing@bonhams.com

Japan
Level 14 Hibiya Central Building
1-2-9 Nishi-Shimbashi
Minato-ku
Tokyo 105-0003
+81 (0) 3 5532 8636
+81 (0) 3 5532 8637 fax
tokyo@bonhams.com

Taiwan
37th Floor, Taipei 101 Tower
Nor 7 Xinyi Road, Section 5
Taipei, 100
+886 2 8758 2898
+886 2 8757 2897 fax
summer.fang@bonhams.com

AUSTRALIA

Sydney
76 Paddington Street
Paddington NSW 2021
Australia
+61 (0) 2 8412 2222
+61 (0) 2 9475 4110 fax
info.aus@bonhams.com

Melbourne
Ormond Hall
557 St Kilda Rd
Melbourne VIC 3004
+61 (0) 3 8640 4088

Representative:
Adelaide
James Bruce
+61 (0) 8 8232 2860

AFRICA

South Africa - Johannesburg
Penny Culverwell
+27 (0)71 342 2670
penny.culverwell@bonhams.com

Registration and Bidding Form

(Attendee / Absentee / Online / Telephone Bidding)

Please circle your bidding method above.

Bonhams

1793

--	--	--	--

Paddle number (for office use only)

This sale will be conducted in accordance with Bonhams' Conditions of Sale and bidding and buying at the Sale will be regulated by these Conditions. You should read the Conditions in conjunction with the Sale Information relating to this Sale which sets out the charges payable by you on the purchases you make and other terms relating to bidding and buying at the Sale. You should ask any questions you have about the Conditions before signing this form. These Conditions also contain certain undertakings by bidders and buyers and limit Bonhams' liability to bidders and buyers.

Data protection – use of your information

Where we obtain any personal information about you, we shall only use it in accordance with the terms of our Privacy Policy (subject to any additional specific consent(s) you may have given at the time your information was disclosed). A copy of our Privacy Policy can be found on our website (www.bonhams.com) or requested by post from Customer Services Department, 101 New Bond Street, London W1S 1SR United Kingdom or by e-mail from info@bonhams.com.

Credit and Debit Card Payments

There is no surcharge for payments made by debit cards issued by a UK bank. All other debit cards and all credit cards are subject to a 3% surcharge on the total invoice price.

Notice to Bidders.

Clients are requested to provide photographic proof of ID - passport, driving licence, ID card, together with proof of address - utility bill, bank or credit card statement etc. Corporate clients should also provide a copy of their articles of association / company registration documents, together with a letter authorising the individual to bid on the company's behalf. Failure to provide this may result in your bids not being processed. For higher value lots you may also be asked to provide a bank reference.

If successful

I will collect the purchases myself
 Please contact me with a shipping quote (if applicable)

Sale title: Jewellery		Sale date: Wednesday 10 April 2013													
Sale no. 20685		Sale venue: Oxford													
<p>If you are not attending the sale in person, please provide details of the Lots on which you wish to bid at least 24 hours prior to the sale. Bids will be rounded down to the nearest increment. Please refer to the Notice to Bidders in the catalogue for further information relating to Bonhams executing telephone, online or absentee bids on your behalf. Bonhams will endeavour to execute these bids on your behalf but will not be liable for any errors or failing to execute bids.</p> <p>General Bid Increments:</p> <table border="0"> <tr> <td>£10 - 200by 10s</td> <td>£10,000 - 20,000by 1,000s</td> </tr> <tr> <td>£200 - 500by 20 / 50 / 80s</td> <td>£20,000 - 50,000by 2,000 / 5,000 / 8,000s</td> </tr> <tr> <td>£500 - 1,000by 50s</td> <td>£50,000 - 100,000by 5,000s</td> </tr> <tr> <td>£1,000 - 2,000by 100s</td> <td>£100,000 - 200,000by 10,000s</td> </tr> <tr> <td>£2,000 - 5,000by 200 / 500 / 800s</td> <td>above £200,000at the auctioneer's discretion</td> </tr> <tr> <td>£5,000 - 10,000by 500s</td> <td></td> </tr> </table> <p>The auctioneer has discretion to split any bid at any time.</p>				£10 - 200by 10s	£10,000 - 20,000by 1,000s	£200 - 500by 20 / 50 / 80s	£20,000 - 50,000by 2,000 / 5,000 / 8,000s	£500 - 1,000by 50s	£50,000 - 100,000by 5,000s	£1,000 - 2,000by 100s	£100,000 - 200,000by 10,000s	£2,000 - 5,000by 200 / 500 / 800s	above £200,000at the auctioneer's discretion	£5,000 - 10,000by 500s	
£10 - 200by 10s	£10,000 - 20,000by 1,000s														
£200 - 500by 20 / 50 / 80s	£20,000 - 50,000by 2,000 / 5,000 / 8,000s														
£500 - 1,000by 50s	£50,000 - 100,000by 5,000s														
£1,000 - 2,000by 100s	£100,000 - 200,000by 10,000s														
£2,000 - 5,000by 200 / 500 / 800s	above £200,000at the auctioneer's discretion														
£5,000 - 10,000by 500s															
Customer Number		Title													
First Name		Last Name													
Company name (to be invoiced if applicable)															
Address															
City		County / State													
Post / Zip code		Country													
Telephone mobile		Telephone daytime													
Telephone evening		Fax													
Preferred number(s) in order for Telephone Bidding (inc. country code)															
E-mail (in capitals) <input type="text"/>															
I am registering to bid as a private client <input type="checkbox"/>		I am registering to bid as a trade client <input type="checkbox"/>													
If registered for VAT in the EU please enter your registration here: <input type="text"/>		Please tick if you have registered with us before <input type="checkbox"/>													

Please note that all telephone calls are recorded.

Telephone or Absentee (T / A)	Lot no.	Brief description	MAX bid in GBP (excluding premium & VAT)	Covering bid*

FOR WINE SALES ONLY

Please leave lots "available under bond" in bond I will collect from Park Royal or bonded warehouse Please include delivery charges (minimum charge of £20 + VAT)

BY SIGNING THIS FORM YOU AGREE THAT YOU HAVE READ AND UNDERSTAND OUR CONDITIONS OF SALE AND WISH TO BE BOUND BY THEM. THIS AFFECTS YOUR LEGAL RIGHTS.

Your signature: _____ Date: _____

* Covering Bid: A maximum bid (exclusive of Buyers Premium and VAT) to be executed by Bonhams only if we are unable to contact you by telephone, or should the connection be lost during bidding.

NB. Payment will only be accepted from an account in the same name as shown on the invoice and Auction Registration form.

Please email or fax the completed Auction Registration form and requested information to:

Bonhams, Customer Services, 101 New Bond Street, London, W1S 1SR. Tel: +44 (0) 20 7447 7447 Fax: +44 (0) 20 7447 7401, bids@bonhams.com

Bonhams 1793 Limited. Montpelier Street, London SW7 1HH. Incorporated in England. Company Number 4326560.



£ 1793

Bonhams
Banbury Road
Shipton on Cherwell
Kidlington
Oxford OX5 1JH
+44 (0) 1865 853 640
+44 (0) 1865 372 722 fax

